

Data Path : Z:\pestpcbsrv\HPCHEM1\ECD\_R\Data\PR063022\  
 Data File : PR055110.D  
 Signal(s) : Signal #1: ECD1A.ch Signal #2: ECD2B.ch  
 Acq On : 29 Jun 2022 22:14  
 Operator : AJ\MA  
 Sample : N3214-07  
 Misc : AR1248 LOD 25 PPB  
 ALS Vial : 18 Sample Multiplier: 1

**Instrument :**  
 ECD\_R  
**ClientSampleId :**  
 LOD-MDL-WATER-01-QT2-2022

Integration File signal 1: autoint1.e  
 Integration File signal 2: autoint2.e  
 Quant Time: Jun 30 03:21:49 2022  
 Quant Method : Z:\pestpcbsrv\HPCHEM1\ECD\_R\Method\PR062722.M  
 Quant Title : GC EXTRACTABLES  
 QLast Update : Mon Jun 27 17:05:06 2022  
 Response via : Initial Calibration  
 Integrator: ChemStation

Volume Inj. : 2 µl  
 Signal #1 Phase : ZB-MR1 Signal #2 Phase: ZB-MR2  
 Signal #1 Info : 30Mx0.32mmx 0.50µ Signal #2 Info : 30M x 0.32mm x 0.25µm

Compound	RT#1	RT#2	Resp#1	Resp#2	ng/ml	ng/ml
-----						
System Monitoring Compounds						
1) SA Tetrachlo...	3.640	2.911	76492644	34846092	21.030	20.873
2) SA Decachlor...	9.529	8.136	32474575	31726861	22.522	22.581
Target Compounds						
21) L5 AR-1248-1	4.861	4.022	1750569	809467	26.014	22.641
22) L5 AR-1248-2	5.153	4.268	2280435	1211490	27.720	25.548
23) L5 AR-1248-3	5.365	4.309	2344237	1166250	26.196	24.514
24) L5 AR-1248-4	5.797	4.484	2414501	1374274	27.232	23.307
25) L5 AR-1248-5	5.837	4.894	2501368	1362026	29.085	23.575
-----						

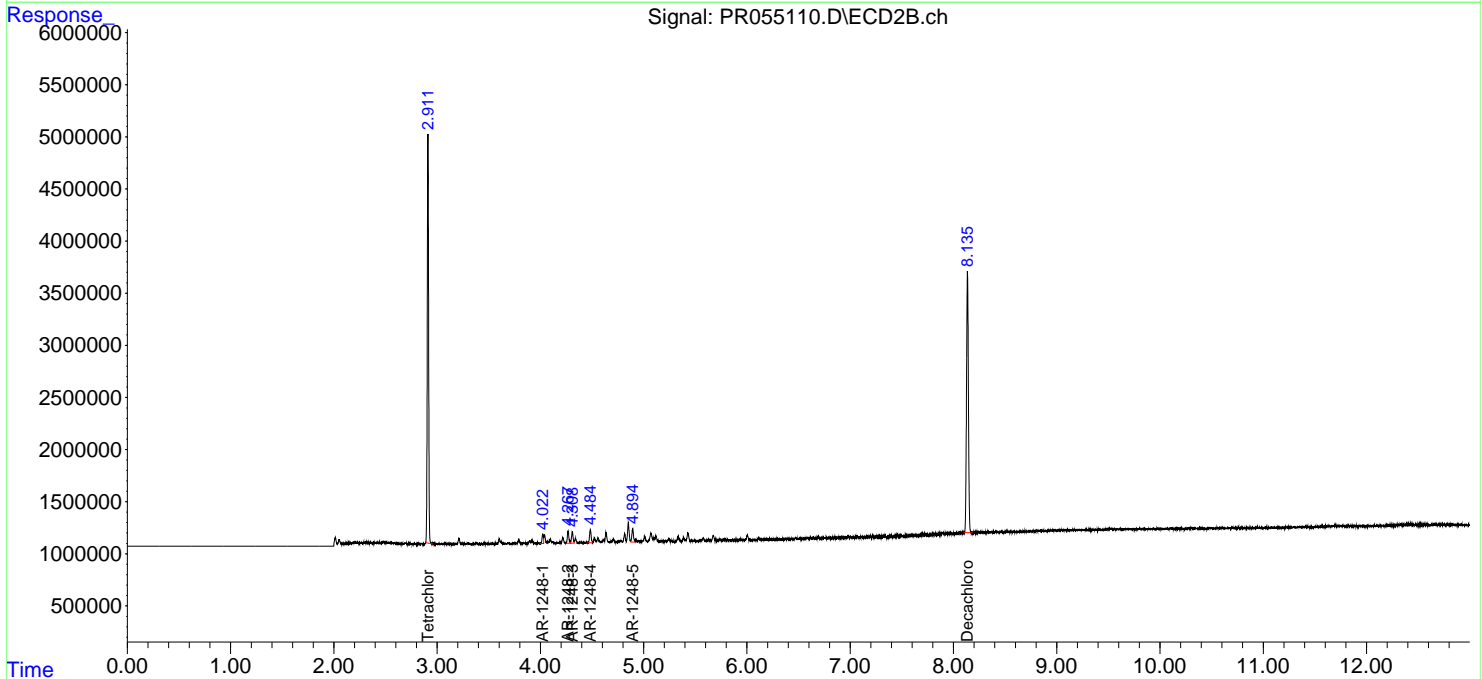
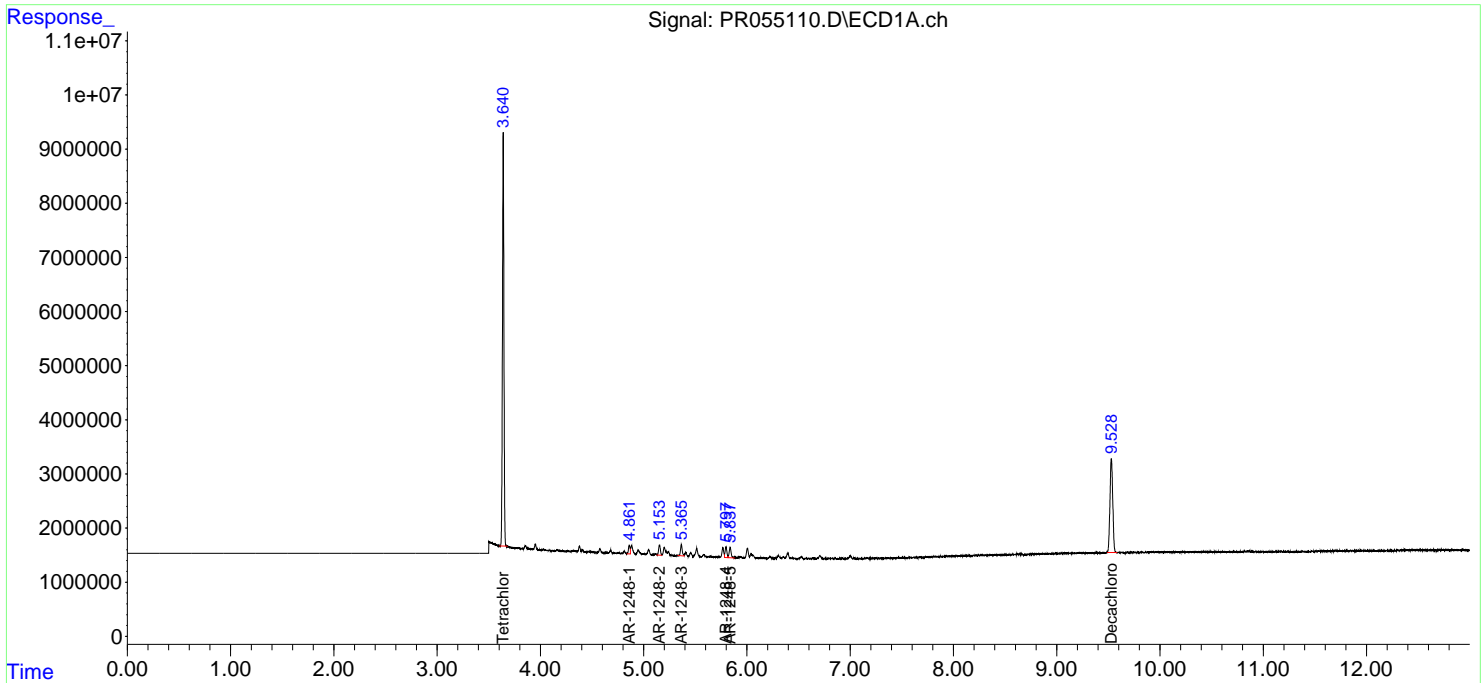
(f)=RT Delta > 1/2 Window (#)=Amounts differ by > 25% (m)=manual int.

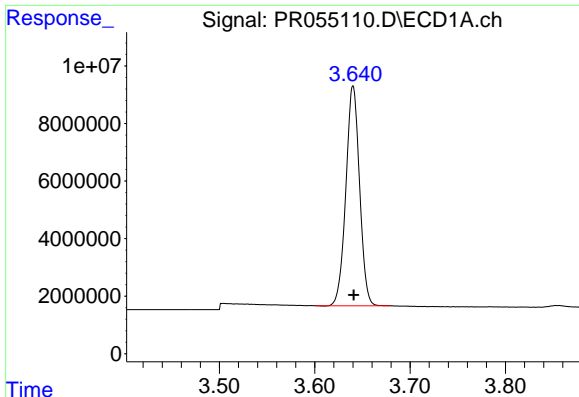
Data Path : Z:\pestpcbsrv\HPCHEM1\ECD\_R\Data\PR063022\  
 Data File : PR055110.D  
 Signal(s) : Signal #1: ECD1A.ch Signal #2: ECD2B.ch  
 Acq On : 29 Jun 2022 22:14  
 Operator : AJ\MA  
 Sample : N3214-07  
 Misc : AR1248 LOD 25 PPB  
 ALS Vial : 18 Sample Multiplier: 1

**Instrument :**  
 ECD\_R  
**ClientSampleId :**  
 LOD-MDL-WATER-01-QT2-2022

Integration File signal 1: autoint1.e  
 Integration File signal 2: autoint2.e  
 Quant Time: Jun 30 03:21:49 2022  
 Quant Method : Z:\pestpcbsrv\HPCHEM1\ECD\_R\Method\PR062722.M  
 Quant Title : GC EXTRACTABLES  
 QLast Update : Mon Jun 27 17:05:06 2022  
 Response via : Initial Calibration  
 Integrator: ChemStation

Volume Inj. : 2 µl  
 Signal #1 Phase : ZB-MR1 Signal #2 Phase: ZB-MR2  
 Signal #1 Info : 30Mx0.32mmx 0.50µ Signal #2 Info : 30M x 0.32mm x 0.25µm

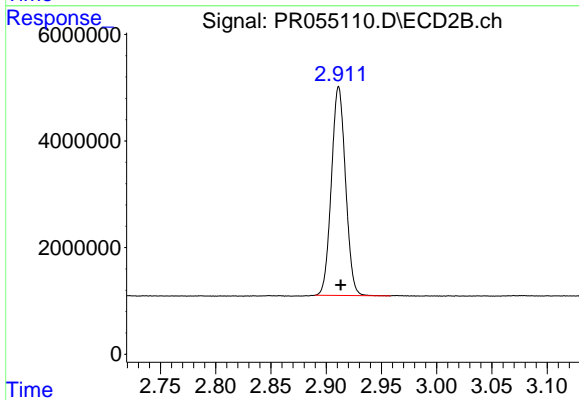




#1 Tetrachloro-m-xylene

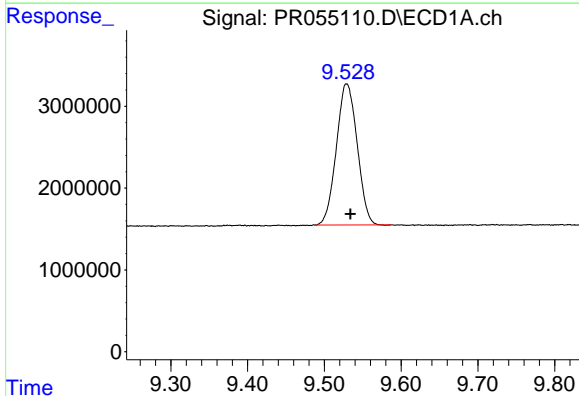
R.T.: 3.640 min  
 Delta R.T.: 0.000 min  
 Response: 76492644  
 Conc: 21.03 ng/ml

Instrument :  
 ECD\_R  
 ClientSampleId :  
 LOD-MDL-WATER-01-QT2-2022



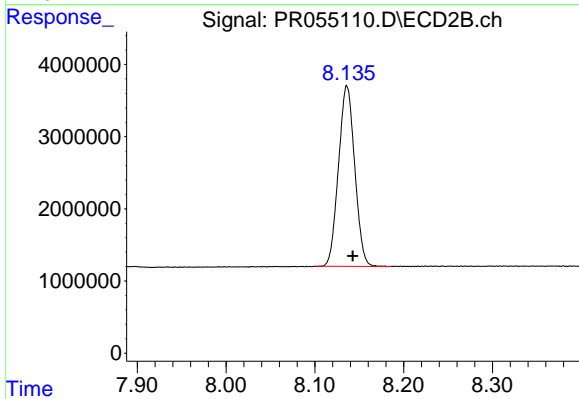
#1 Tetrachloro-m-xylene

R.T.: 2.911 min  
 Delta R.T.: -0.002 min  
 Response: 34846092  
 Conc: 20.87 ng/ml



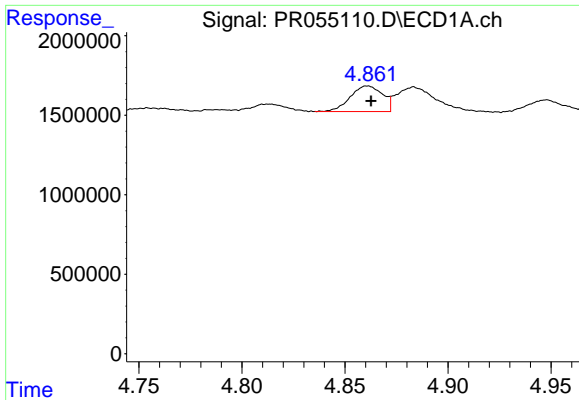
#2 Decachlorobiphenyl

R.T.: 9.529 min  
 Delta R.T.: -0.005 min  
 Response: 32474575  
 Conc: 22.52 ng/ml



#2 Decachlorobiphenyl

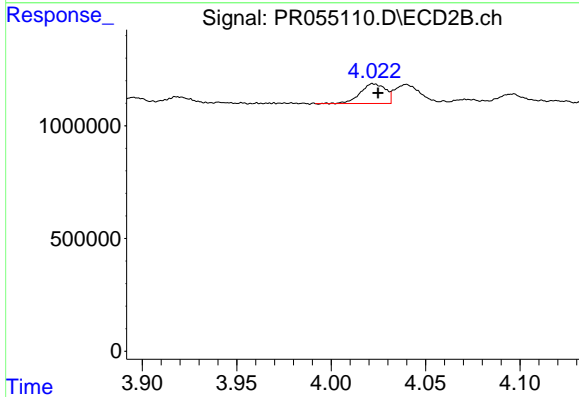
R.T.: 8.136 min  
 Delta R.T.: -0.007 min  
 Response: 31726861  
 Conc: 22.58 ng/ml



#21 AR-1248-1

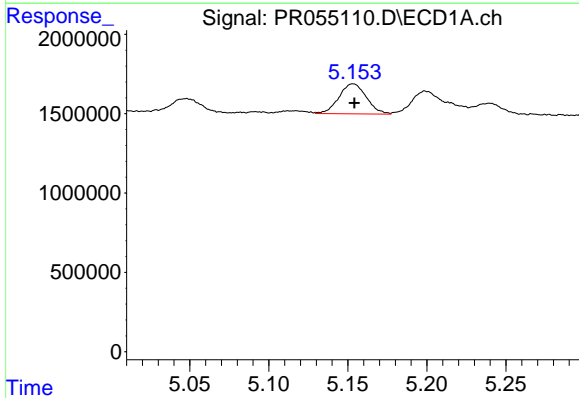
R.T.: 4.861 min  
 Delta R.T.: -0.002 min  
 Response: 1750569  
 Conc: 26.01 ng/ml

Instrument :  
 ECD\_R  
 ClientSampleId :  
 LOD-MDL-WATER-01-QT2-2022



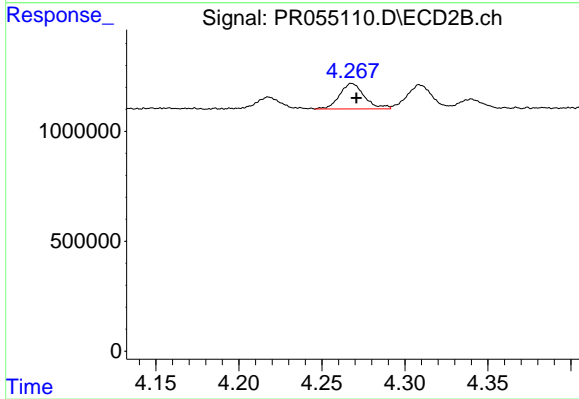
#21 AR-1248-1

R.T.: 4.022 min  
 Delta R.T.: -0.002 min  
 Response: 809467  
 Conc: 22.64 ng/ml



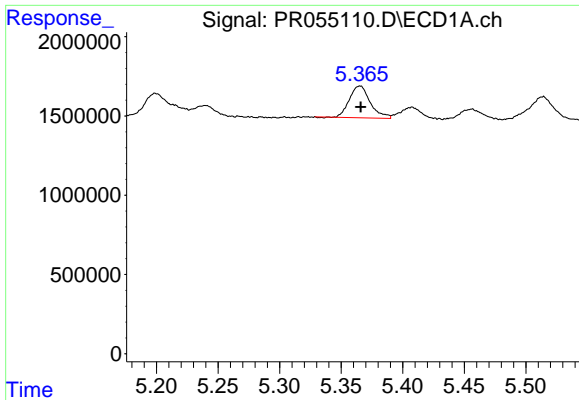
#22 AR-1248-2

R.T.: 5.153 min  
 Delta R.T.: 0.000 min  
 Response: 2280435  
 Conc: 27.72 ng/ml



#22 AR-1248-2

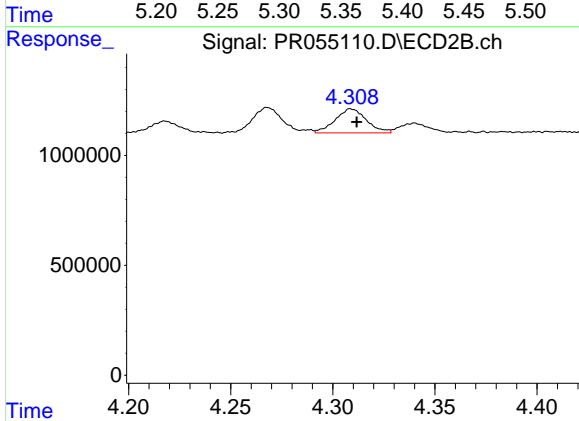
R.T.: 4.268 min  
 Delta R.T.: -0.003 min  
 Response: 1211490  
 Conc: 25.55 ng/ml



#23 AR-1248-3

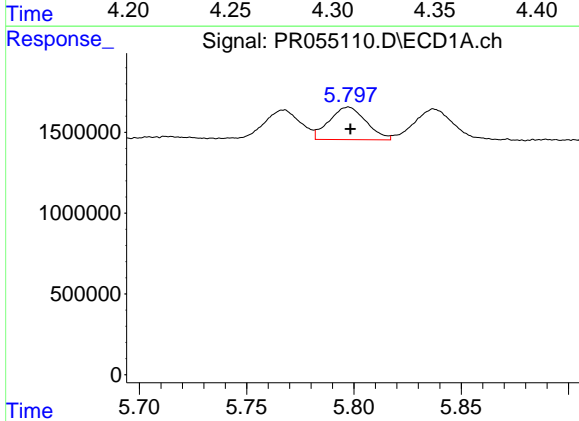
R.T.: 5.365 min  
 Delta R.T.: 0.000 min  
 Response: 2344237  
 Conc: 26.20 ng/ml

Instrument :  
 ECD\_R  
 ClientSampleId :  
 LOD-MDL-WATER-01-QT2-2022



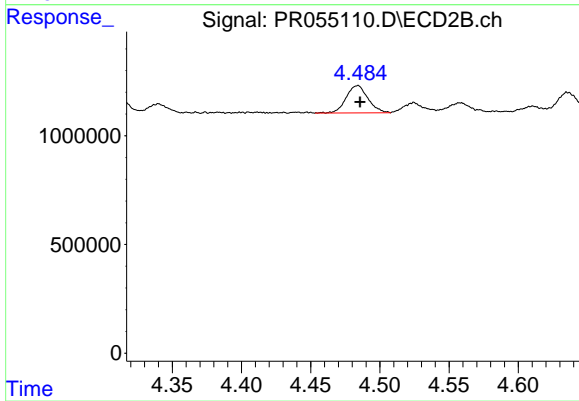
#23 AR-1248-3

R.T.: 4.309 min  
 Delta R.T.: -0.003 min  
 Response: 1166250  
 Conc: 24.51 ng/ml



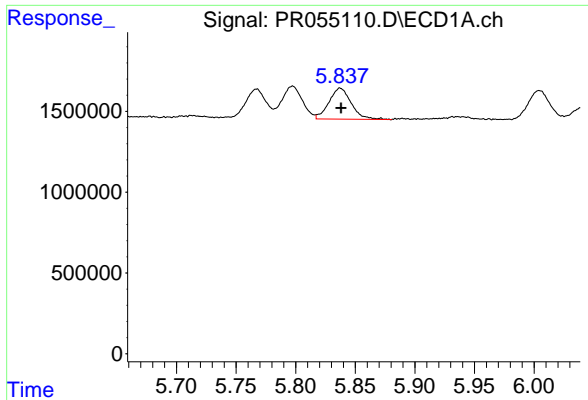
#24 AR-1248-4

R.T.: 5.797 min  
 Delta R.T.: -0.001 min  
 Response: 2414501  
 Conc: 27.23 ng/ml



#24 AR-1248-4

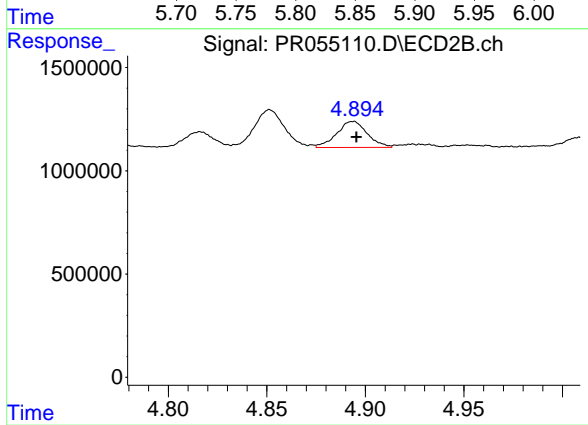
R.T.: 4.484 min  
 Delta R.T.: -0.002 min  
 Response: 1374274  
 Conc: 23.31 ng/ml



#25 AR-1248-5

R.T.: 5.837 min  
 Delta R.T.: 0.000 min  
 Response: 2501368  
 Conc: 29.08 ng/ml

Instrument :  
 ECD\_R  
 ClientSampleId :  
 LOD-MDL-WATER-01-QT2-2022



#25 AR-1248-5

R.T.: 4.894 min  
 Delta R.T.: -0.002 min  
 Response: 1362026  
 Conc: 23.58 ng/ml