

Data Path : Z:\pestpcbsrv\HPCHEM1\ECD_R\Data\PR070924\
 Data File : PR067619.D
 Signal(s) : Signal #1: ECD1A.ch Signal #2: ECD2B.ch
 Acq On : 09 Jul 2024 09:47
 Operator : AJ\MA
 Sample : AIBLK054
 Misc :
 ALS Vial : 2 Sample Multiplier: 1

Instrument :
 ECD_R
 ClientSampleId :

Integration File signal 1: autoint1.e
 Integration File signal 2: autoint2.e
 Quant Time: Jul 10 01:11:59 2024
 Quant Method : Z:\pestpcbsrv\HPCHEM1\ECD_R\Method\PR070224CLP.M
 Quant Title : GC EXTRACTABLES
 QLast Update : Wed Jul 03 05:42:42 2024
 Response via : Initial Calibration
 Integrator: ChemStation

Volume Inj. : 1 µl
 Signal #1 Phase : ZB MR1 Signal #2 Phase: ZB MR2
 Signal #1 Info : 30Mx0.32mmx 0.5µm Signal #2 Info : 30M x 0.32mm x 0.25µm

Compound	RT#1	RT#2	Resp#1	Resp#2	ng/ml	ng/ml
System Monitoring Compounds						
1) SA Tetrachlo...	3.644	2.881	76986576	107.7E6	19.082	18.673
2) SA Decachlor...	9.517	8.100	67352530	76283943	43.821	36.228
Target Compounds						
3) L1 AR-1016-1	4.816f	0.000	1315623	0	14.171	N.D. #
4) L1 AR-1016-2	0.000	4.071f	0	174429	N.D.	0.661 #
5) L1 AR-1016-3	4.974	4.184	1493779	171050	12.814	1.298 #
6) L1 AR-1016-4	0.000	4.228	0	97037	N.D.	0.921 #
7) L1 AR-1016-5	5.431f	4.448	745701	211324	9.179	1.580 #
8) L2 AR-1221-1	0.000	3.096	0	169618	N.D.	2.843 #
9) L2 AR-1221-2	3.955	3.180	896295	1371101	28.742	32.527
10) L2 AR-1221-3	0.000	3.270	0	543997	N.D.	3.958 #
11) L3 AR-1232-1	0.000	3.270	0	543997	N.D.	4.600 #
12) L3 AR-1232-2	4.570	4.071f	703892	174429	15.701	1.591 #
13) L3 AR-1232-3	0.000	4.184	0	171050	N.D.	2.985 #
14) L3 AR-1232-4	0.000	4.254	0	480428	N.D.	9.415 #
15) L3 AR-1232-5	5.207f	4.448	294865	211324	11.278	3.848 #
16) L4 AR-1242-1	4.816f	0.000	1315623	0	19.094	N.D. #
17) L4 AR-1242-2	0.000	4.071f	0	174429	N.D.	0.934 #
18) L4 AR-1242-3	4.974	4.184	1493779	171050	17.283	1.708 #
19) L4 AR-1242-4	0.000	4.254	0	480428	N.D.	4.919 #
20) L4 AR-1242-5	5.770f	4.806	1112365	224524	16.800	1.903 #
21) L5 AR-1248-1	4.816f	0.000	1315623	0	25.737	N.D. #
22) L5 AR-1248-2	5.207f	4.228	294865	97037	3.448	0.682 #
23) L5 AR-1248-3	5.431f	4.254	745701	480428	7.247	3.335 #
24) L5 AR-1248-4	5.770	4.448	1112365	211324	11.847	1.234 #
25) L5 AR-1248-5	5.770f	4.857	1112365	316981	9.628	1.933 #
26) L6 AR-1254-1	5.770	4.806	1112365	224524	9.905	0.864 #
27) L6 AR-1254-2	6.015	4.971	3621885	496488	21.582	2.083 #
28) L6 AR-1254-3	6.388	5.403	1070473	1278063	6.026	3.126 #
29) L6 AR-1254-4	6.690	5.630	1222356	469070	11.414	2.015 #
30) L6 AR-1254-5	0.000	6.074	0	379671	N.D.	0.991 #
31) L7 AR-1260-1	6.602	5.531	1744618	1086891	10.903	3.178 #
32) L7 AR-1260-2	0.000	5.742	0	674056	N.D.	1.638 #
33) L7 AR-1260-3	7.279	5.900	3944992	1002499	28.902	2.644 #
34) L7 AR-1260-4	7.475	6.397	1109925	561300	7.523	1.834 #
35) L7 AR-1260-5	7.783f	6.675	633270	510382	2.449	0.799 #
36) L8 AR-1262-1	7.279f	6.111	3944992	284516	23.886	0.707 #
37) L8 AR-1262-2	7.783f	6.675	633270	510382	2.575	0.840 #
38) L8 AR-1262-3	0.000	6.947	0	717639	N.D.	3.110 #
39) L8 AR-1262-4	0.000	7.039	0	570359	N.D.	1.365 #
40) L8 AR-1262-5	0.000	7.565	0	135939	N.D.	0.809 #
41) L9 AR-1268-1	0.000	6.947	0	717639	N.D.	1.057 #

Data Path : Z:\pestpcbsrv\HPCHEM1\ECD_R\Data\PR070924\
 Data File : PR067619.D
 Signal(s) : Signal #1: ECD1A.ch Signal #2: ECD2B.ch
 Acq On : 09 Jul 2024 09:47
 Operator : AJ\MA
 Sample : AIBLK054
 Misc :
 ALS Vial : 2 Sample Multiplier: 1

Instrument :
 ECD_R
 ClientSampleId :

Integration File signal 1: autoint1.e
 Integration File signal 2: autoint2.e
 Quant Time: Jul 10 01:11:59 2024
 Quant Method : Z:\pestpcbsrv\HPCHEM1\ECD_R\Method\PR070224CLP.M
 Quant Title : GC EXTRACTABLES
 QLast Update : Wed Jul 03 05:42:42 2024
 Response via : Initial Calibration
 Integrator: ChemStation

Volume Inj. : 1 µl
 Signal #1 Phase : ZB MR1 Signal #2 Phase: ZB MR2
 Signal #1 Info : 30Mx0.32mmx 0.5µm Signal #2 Info : 30M x 0.32mm x 0.25µm

	Compound	RT#1	RT#2	Resp#1	Resp#2	ng/ml	ng/ml
42)	L9 AR-1268-2	0.000	7.039	0	570359	N.D.	0.930 #
43)	L9 AR-1268-3	8.424	7.252	614340	651379	2.095	1.279 #
44)	L9 AR-1268-4	0.000	7.565	0	135939	N.D.	0.705 #
45)	L9 AR-1268-5	9.212	7.862	645625	822798	0.730	0.568

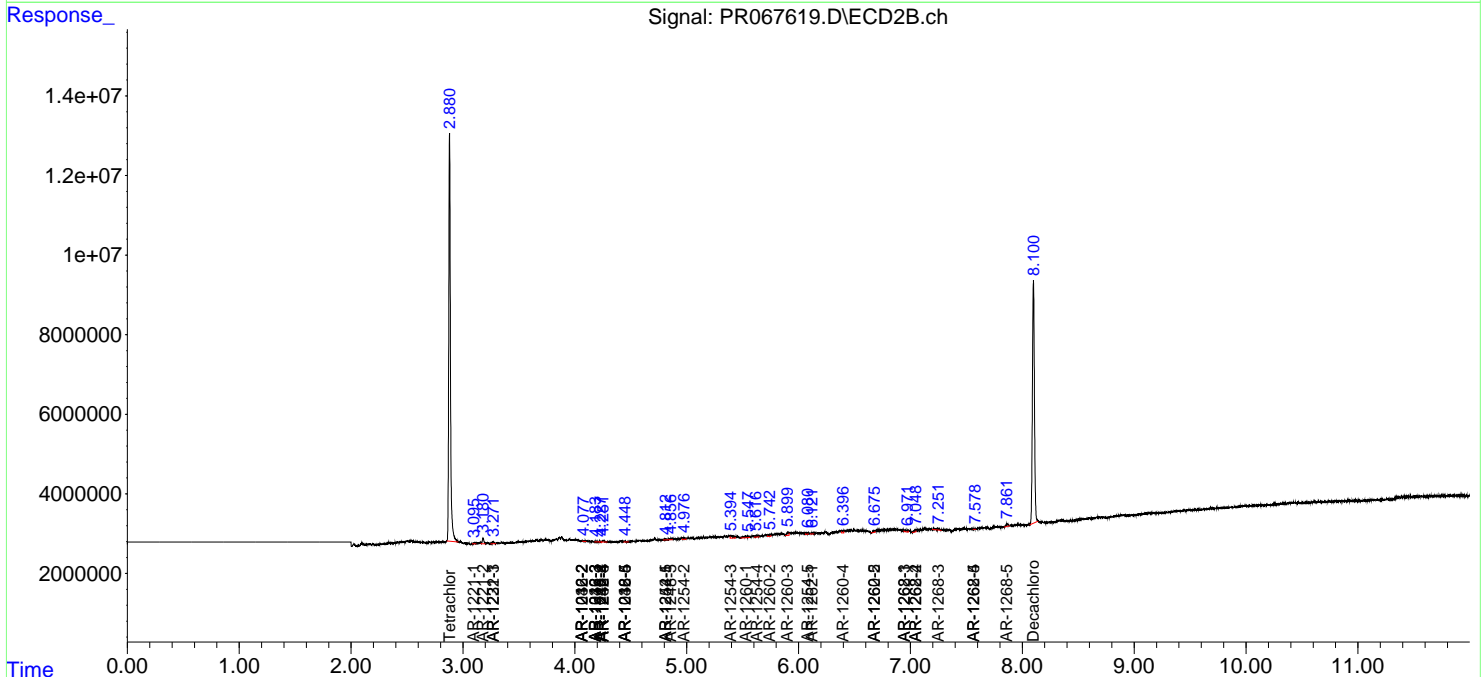
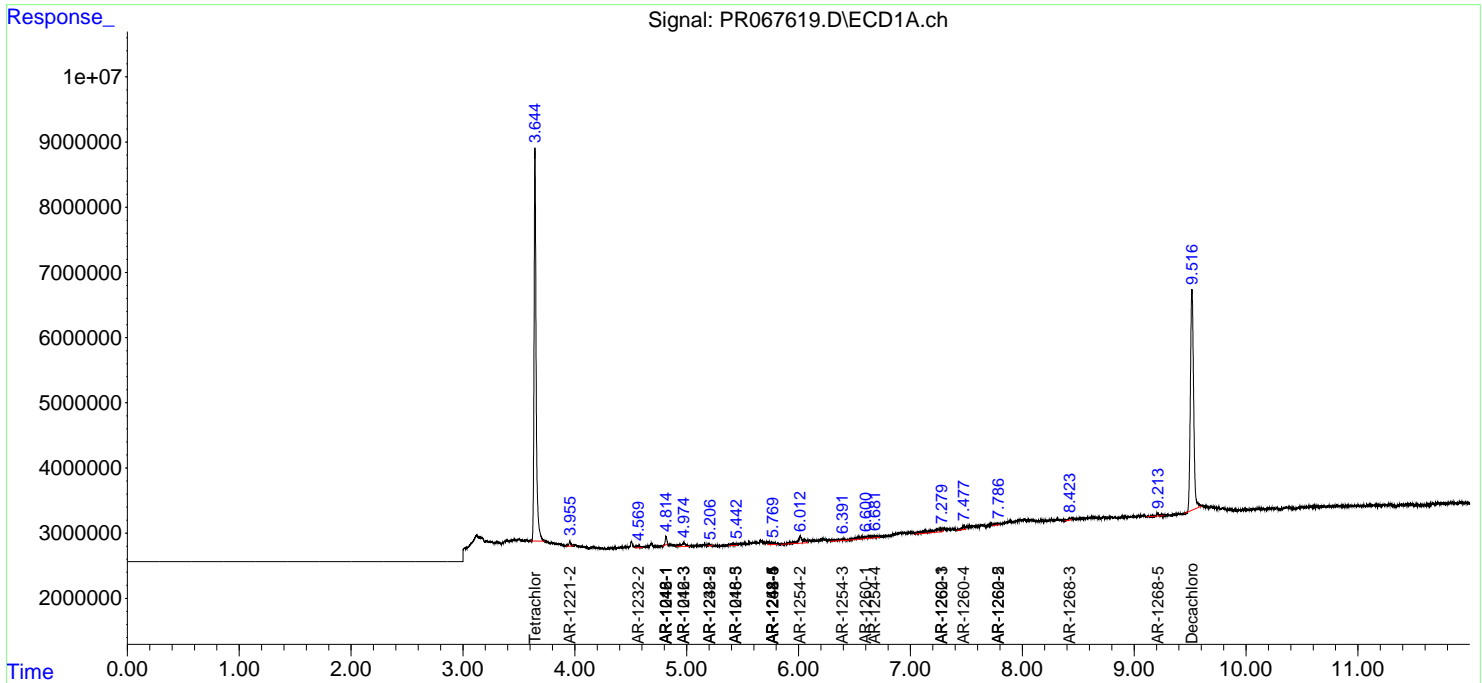
(f)=RT Delta > 1/2 Window (#)=Amounts differ by > 25% (m)=manual int.

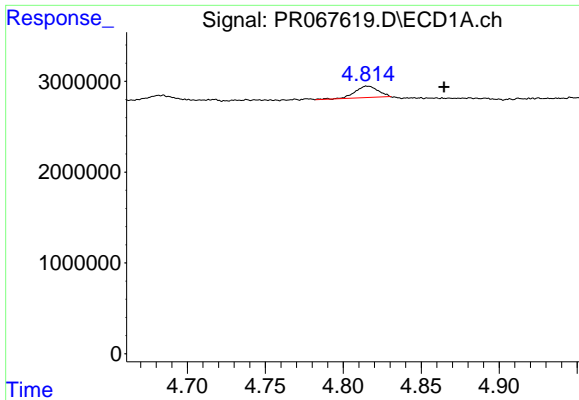
Data Path : Z:\pestpcbsrv\HPCHEM1\ECD_R\Data\PR070924\
 Data File : PR067619.D
 Signal(s) : Signal #1: ECD1A.ch Signal #2: ECD2B.ch
 Acq On : 09 Jul 2024 09:47
 Operator : AJ\MA
 Sample : AIBLK054
 Misc :
 ALS Vial : 2 Sample Multiplier: 1

Instrument :
 ECD_R
 ClientSampleId :

Integration File signal 1: autoint1.e
 Integration File signal 2: autoint2.e
 Quant Time: Jul 10 01:11:59 2024
 Quant Method : Z:\pestpcbsrv\HPCHEM1\ECD_R\Method\PR070224CLP.M
 Quant Title : GC EXTRACTABLES
 QLast Update : Wed Jul 03 05:42:42 2024
 Response via : Initial Calibration
 Integrator: ChemStation

Volume Inj. : 1 µl
 Signal #1 Phase : ZB MR1 Signal #2 Phase: ZB MR2
 Signal #1 Info : 30Mx0.32mmx 0.5µm Signal #2 Info : 30M x 0.32mm x 0.25µm

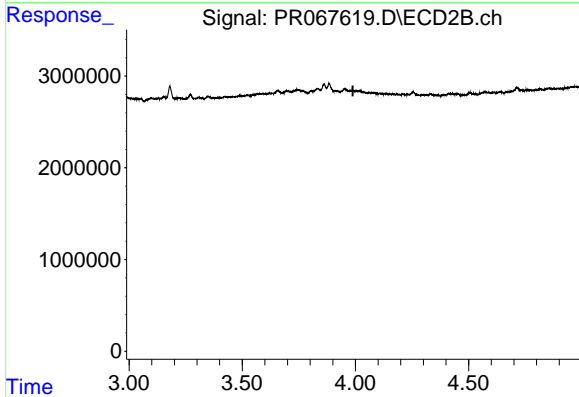




#3 AR-1016-1

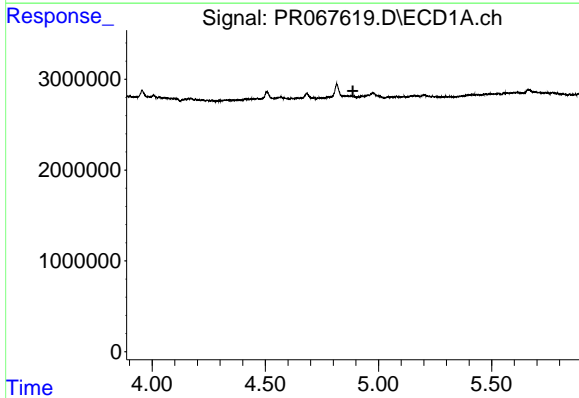
R.T.: 4.816 min
 Delta R.T.: -0.049 min
 Response: 1315623
 Conc: 14.17 ng/ml

Instrument :
 ECD_R
 ClientSampleId :



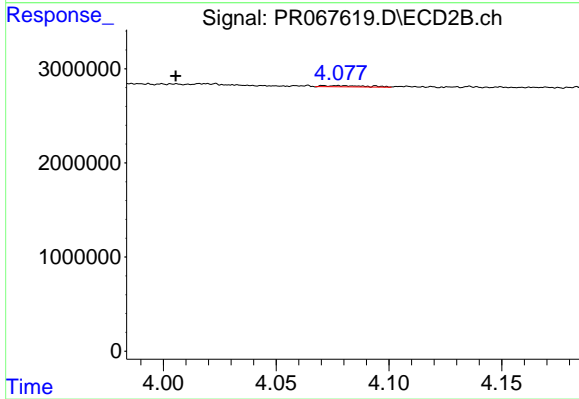
#3 AR-1016-1

R.T.: 0.000 min
 Exp R.T. : 3.989 min
 Response: 0
 Conc: N.D.



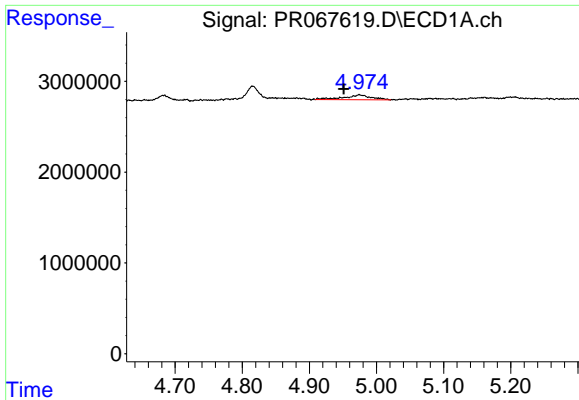
#4 AR-1016-2

R.T.: 0.000 min
 Exp R.T. : 4.887 min
 Response: 0
 Conc: N.D.



#4 AR-1016-2

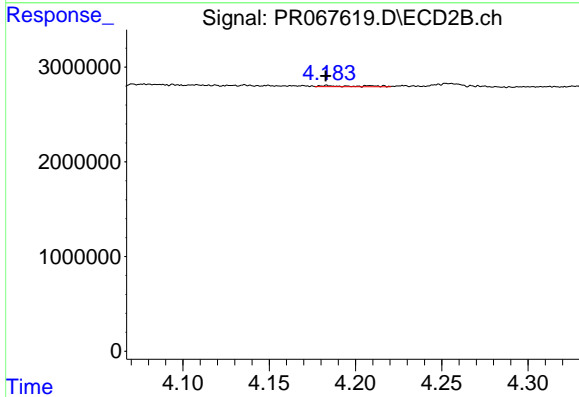
R.T.: 4.071 min
 Delta R.T.: 0.066 min
 Response: 174429
 Conc: 0.66 ng/ml



#5 AR-1016-3

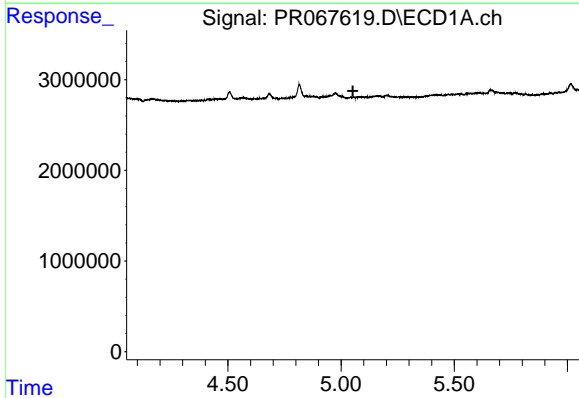
R.T.: 4.974 min
 Delta R.T.: 0.023 min
 Response: 1493779
 Conc: 12.81 ng/ml

Instrument :
 ECD_R
 ClientSampleId :



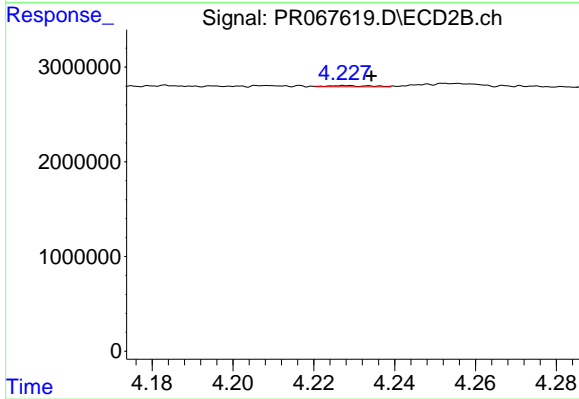
#5 AR-1016-3

R.T.: 4.184 min
 Delta R.T.: 0.000 min
 Response: 171050
 Conc: 1.30 ng/ml



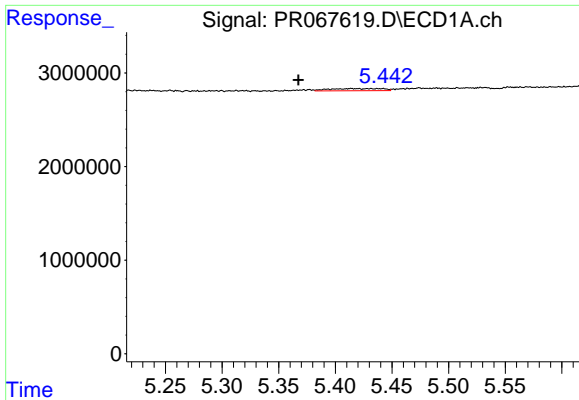
#6 AR-1016-4

R.T.: 0.000 min
 Exp R.T. : 5.052 min
 Response: 0
 Conc: N.D.



#6 AR-1016-4

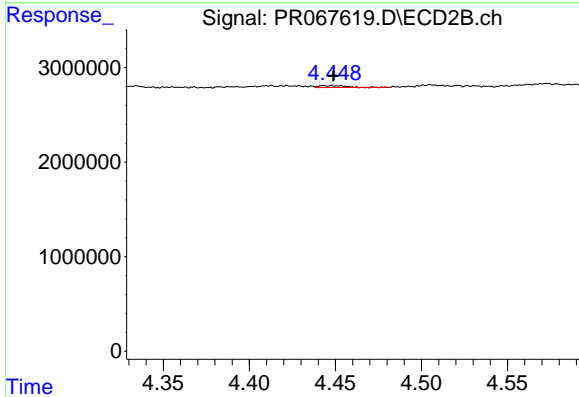
R.T.: 4.228 min
 Delta R.T.: -0.007 min
 Response: 97037
 Conc: 0.92 ng/ml



#7 AR-1016-5

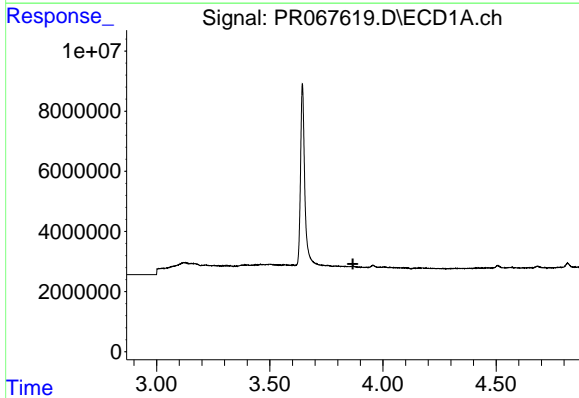
R.T.: 5.431 min
 Delta R.T.: 0.064 min
 Response: 745701
 Conc: 9.18 ng/ml

Instrument :
 ECD_R
 ClientSampleId :



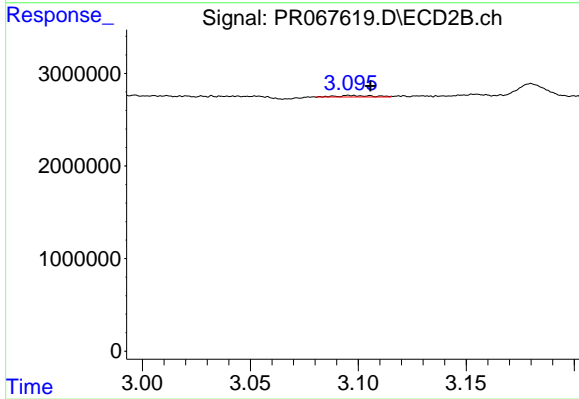
#7 AR-1016-5

R.T.: 4.448 min
 Delta R.T.: 0.000 min
 Response: 211324
 Conc: 1.58 ng/ml



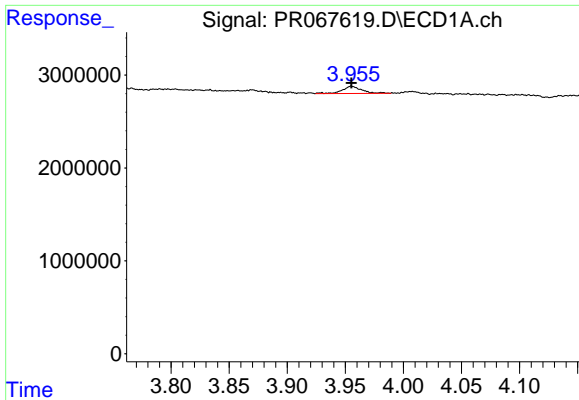
#8 AR-1221-1

R.T.: 0.000 min
 Exp R.T. : 3.867 min
 Response: 0
 Conc: N.D.



#8 AR-1221-1

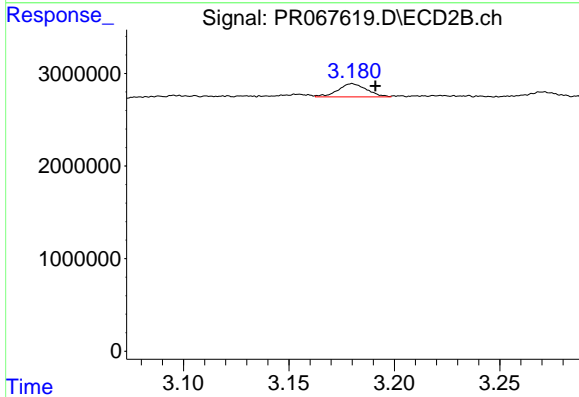
R.T.: 3.096 min
 Delta R.T.: -0.010 min
 Response: 169618
 Conc: 2.84 ng/ml



#9 AR-1221-2

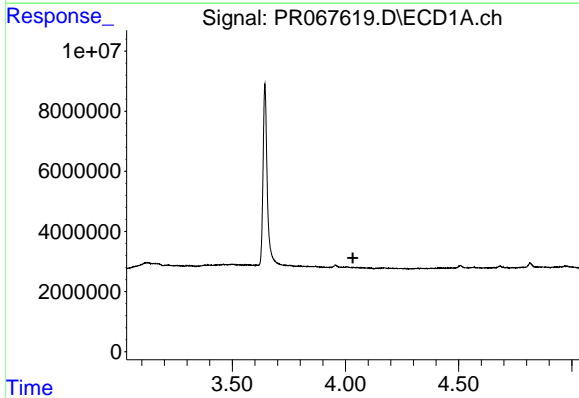
R.T.: 3.955 min
 Delta R.T.: 0.000 min
 Response: 896295
 Conc: 28.74 ng/ml

Instrument :
 ECD_R
 ClientSampleId :



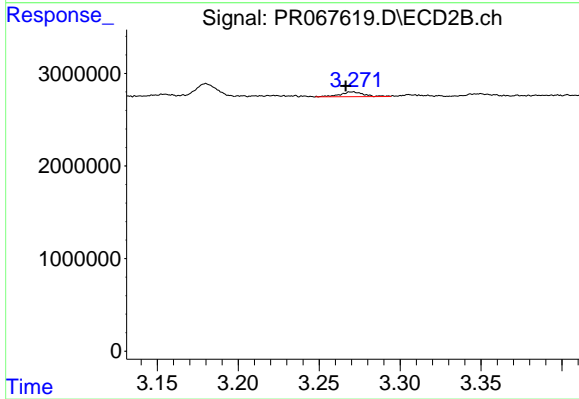
#9 AR-1221-2

R.T.: 3.180 min
 Delta R.T.: -0.011 min
 Response: 1371101
 Conc: 32.53 ng/ml



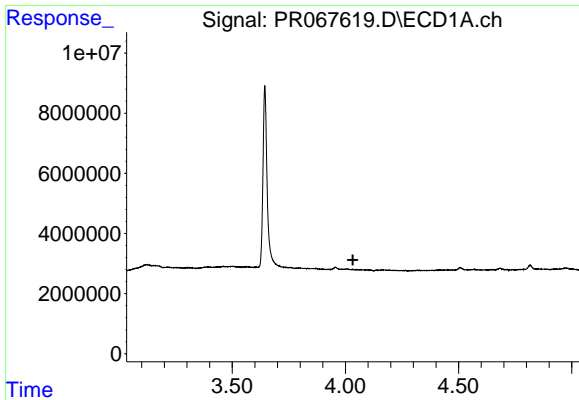
#10 AR-1221-3

R.T.: 0.000 min
 Exp R.T. : 4.033 min
 Response: 0
 Conc: N.D.



#10 AR-1221-3

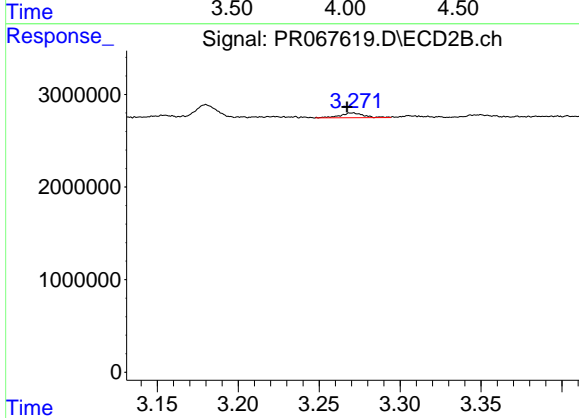
R.T.: 3.270 min
 Delta R.T.: 0.004 min
 Response: 543997
 Conc: 3.96 ng/ml



#11 AR-1232-1

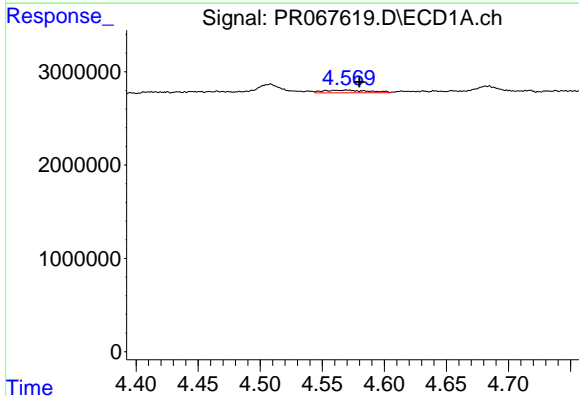
R.T.: 0.000 min
 Exp R.T.: 4.033 min
 Response: 0
 Conc: N.D.

Instrument :
 ECD_R
 ClientSampleId :



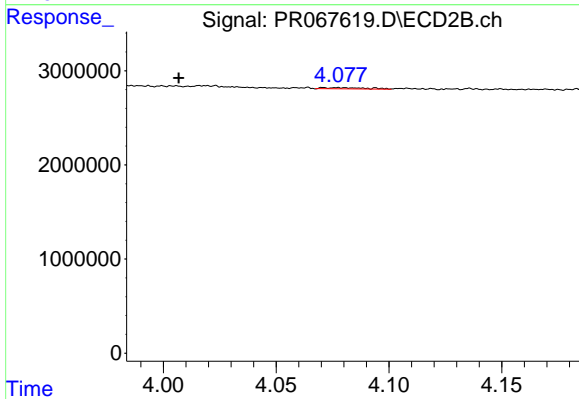
#11 AR-1232-1

R.T.: 3.270 min
 Delta R.T.: 0.003 min
 Response: 543997
 Conc: 4.60 ng/ml



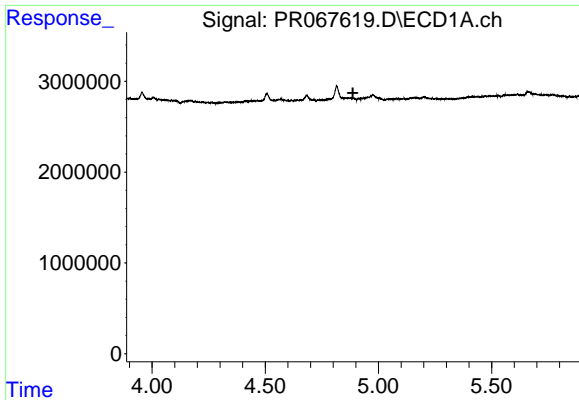
#12 AR-1232-2

R.T.: 4.570 min
 Delta R.T.: -0.010 min
 Response: 703892
 Conc: 15.70 ng/ml



#12 AR-1232-2

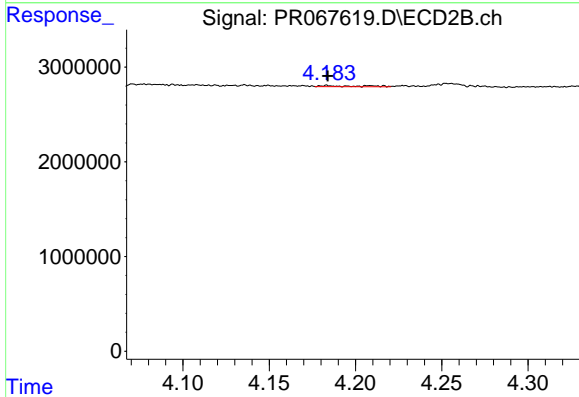
R.T.: 4.071 min
 Delta R.T.: 0.064 min
 Response: 174429
 Conc: 1.59 ng/ml



#13 AR-1232-3

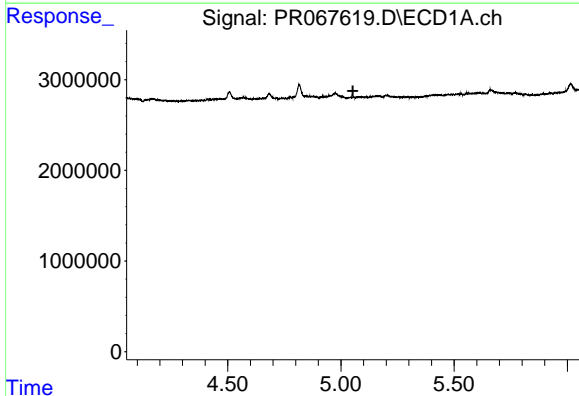
R.T.: 0.000 min
 Exp R.T. : 4.887 min
 Response: 0
 Conc: N.D.

Instrument :
 ECD_R
 ClientSampleId :



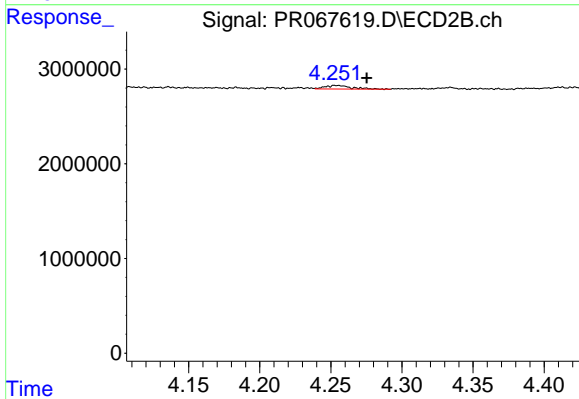
#13 AR-1232-3

R.T.: 4.184 min
 Delta R.T.: 0.000 min
 Response: 171050
 Conc: 2.98 ng/ml



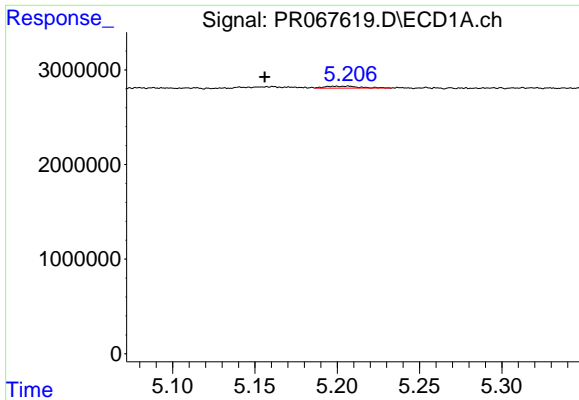
#14 AR-1232-4

R.T.: 0.000 min
 Exp R.T. : 5.053 min
 Response: 0
 Conc: N.D.



#14 AR-1232-4

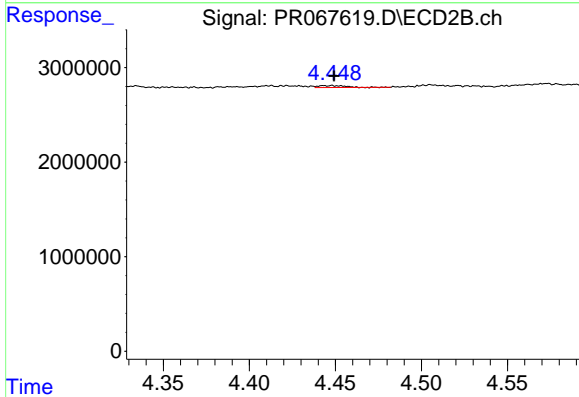
R.T.: 4.254 min
 Delta R.T.: -0.021 min
 Response: 480428
 Conc: 9.41 ng/ml



#15 AR-1232-5

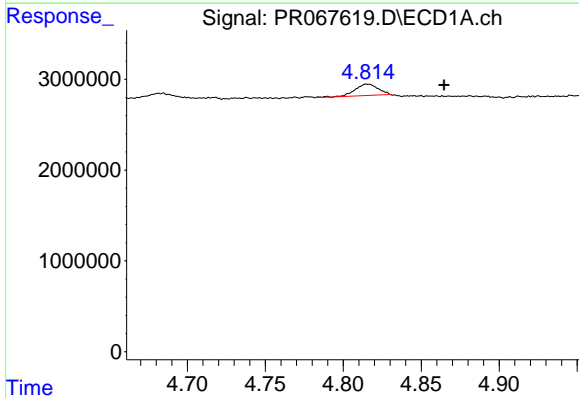
R.T.: 5.207 min
 Delta R.T.: 0.051 min
 Response: 294865
 Conc: 11.28 ng/ml

Instrument :
 ECD_R
 ClientSampleId :



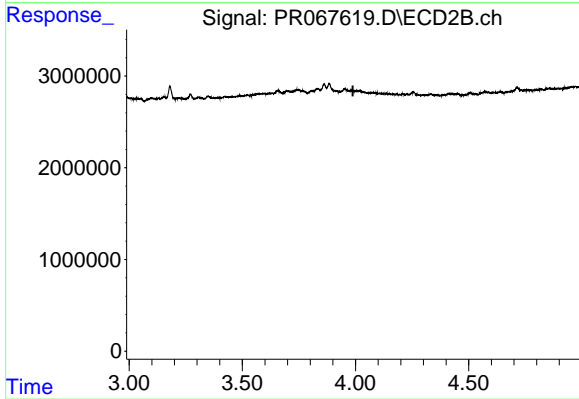
#15 AR-1232-5

R.T.: 4.448 min
 Delta R.T.: 0.000 min
 Response: 211324
 Conc: 3.85 ng/ml



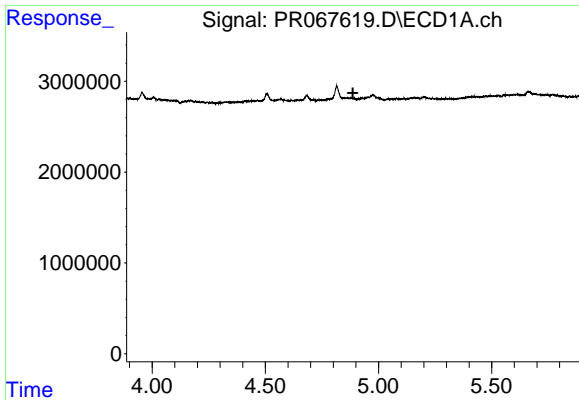
#16 AR-1242-1

R.T.: 4.816 min
 Delta R.T.: -0.049 min
 Response: 1315623
 Conc: 19.09 ng/ml



#16 AR-1242-1

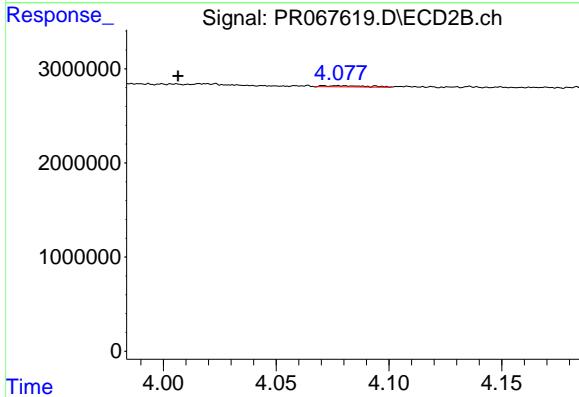
R.T.: 0.000 min
 Exp R.T. : 3.989 min
 Response: 0
 Conc: N.D.



#17 AR-1242-2

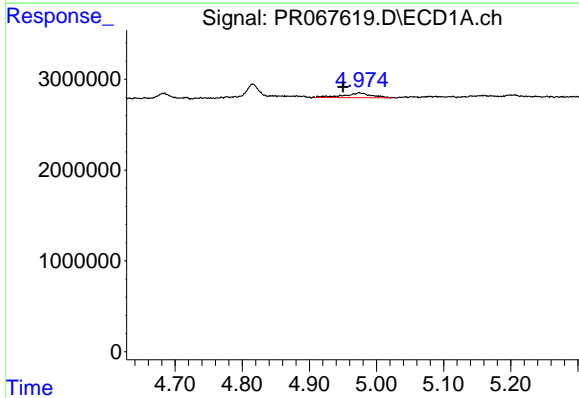
R.T.: 0.000 min
 Exp R.T.: 4.887 min
 Response: 0
 Conc: N.D.

Instrument :
 ECD_R
 ClientSampleId :



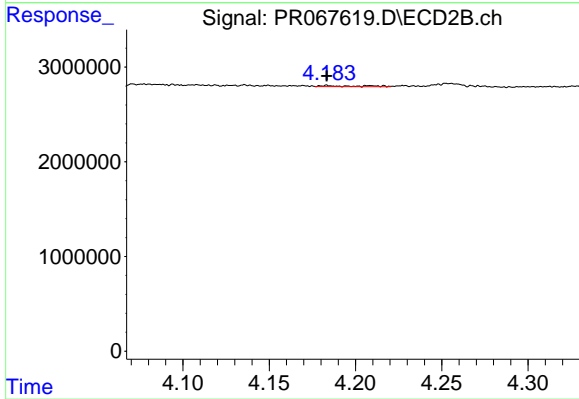
#17 AR-1242-2

R.T.: 4.071 min
 Delta R.T.: 0.065 min
 Response: 174429
 Conc: 0.93 ng/ml



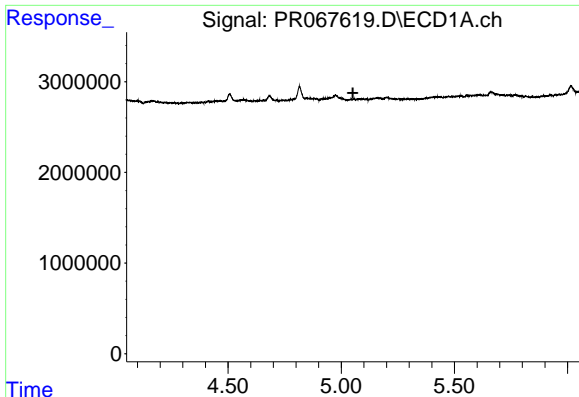
#18 AR-1242-3

R.T.: 4.974 min
 Delta R.T.: 0.024 min
 Response: 1493779
 Conc: 17.28 ng/ml



#18 AR-1242-3

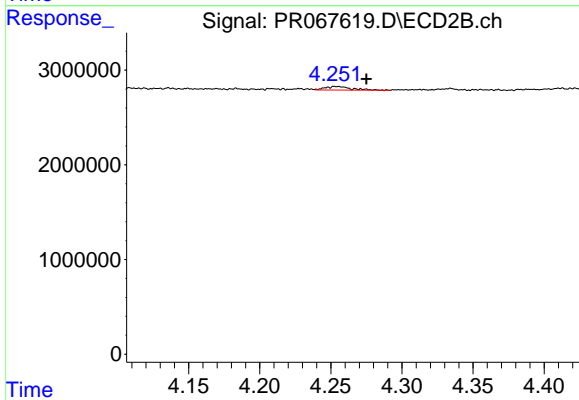
R.T.: 4.184 min
 Delta R.T.: 0.000 min
 Response: 171050
 Conc: 1.71 ng/ml



#19 AR-1242-4

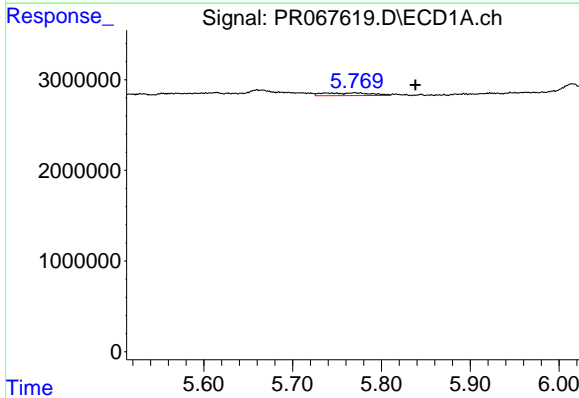
R.T.: 0.000 min
 Exp R.T.: 5.052 min
 Response: 0
 Conc: N.D.

Instrument :
 ECD_R
 ClientSampleId :



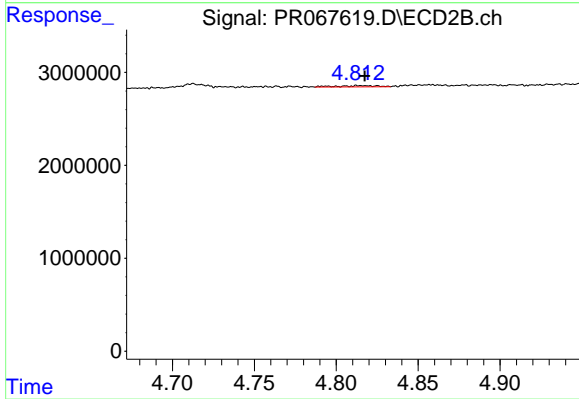
#19 AR-1242-4

R.T.: 4.254 min
 Delta R.T.: -0.021 min
 Response: 480428
 Conc: 4.92 ng/ml



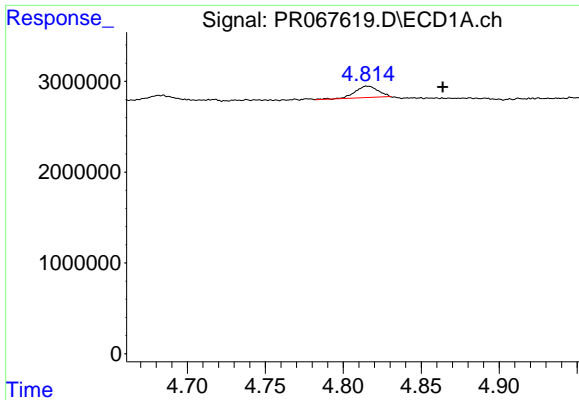
#20 AR-1242-5

R.T.: 5.770 min
 Delta R.T.: -0.068 min
 Response: 1112365
 Conc: 16.80 ng/ml



#20 AR-1242-5

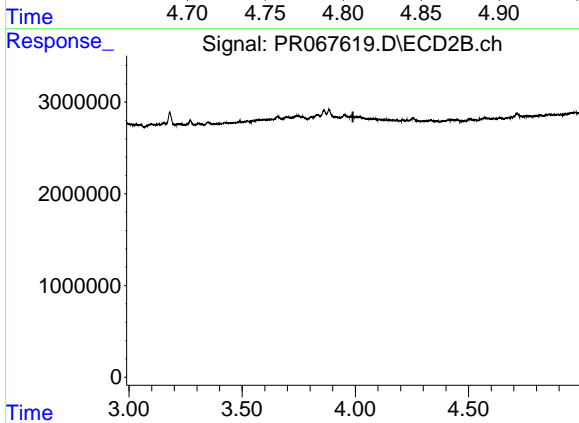
R.T.: 4.806 min
 Delta R.T.: -0.011 min
 Response: 224524
 Conc: 1.90 ng/ml



#21 AR-1248-1

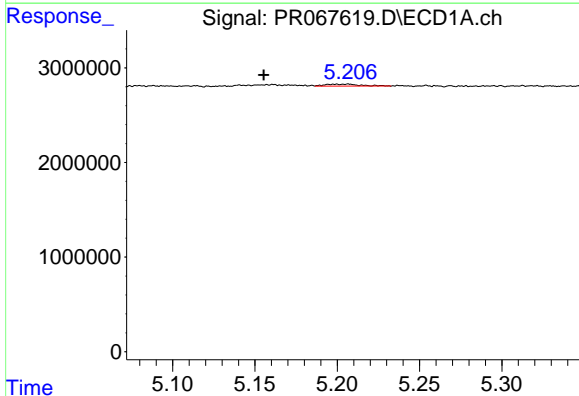
R.T.: 4.816 min
 Delta R.T.: -0.048 min
 Response: 1315623
 Conc: 25.74 ng/ml

Instrument :
 ECD_R
 ClientSampleId :



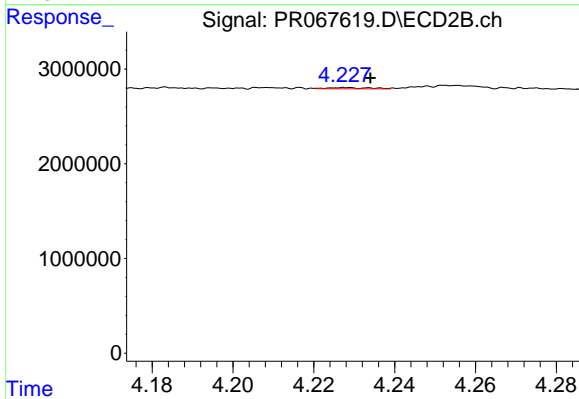
#21 AR-1248-1

R.T.: 0.000 min
 Exp R.T. : 3.989 min
 Response: 0
 Conc: N.D.



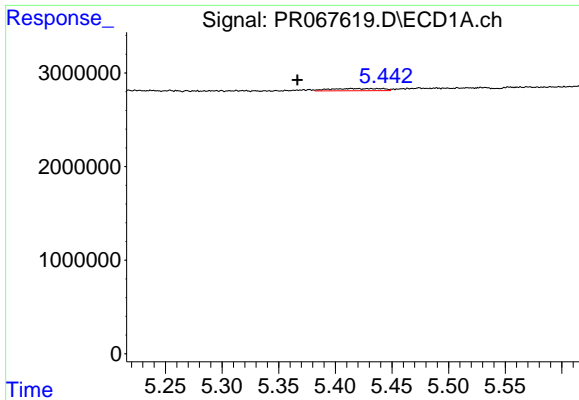
#22 AR-1248-2

R.T.: 5.207 min
 Delta R.T.: 0.051 min
 Response: 294865
 Conc: 3.45 ng/ml



#22 AR-1248-2

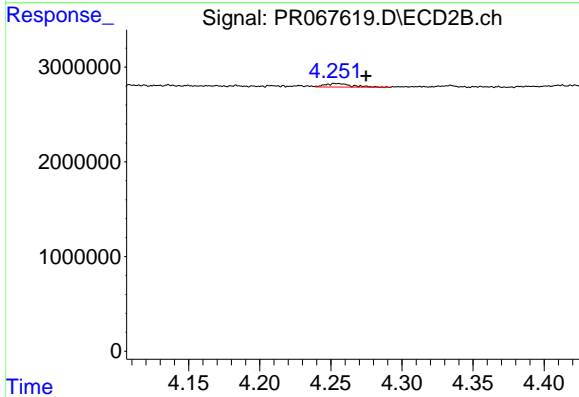
R.T.: 4.228 min
 Delta R.T.: -0.006 min
 Response: 97037
 Conc: 0.68 ng/ml



#23 AR-1248-3

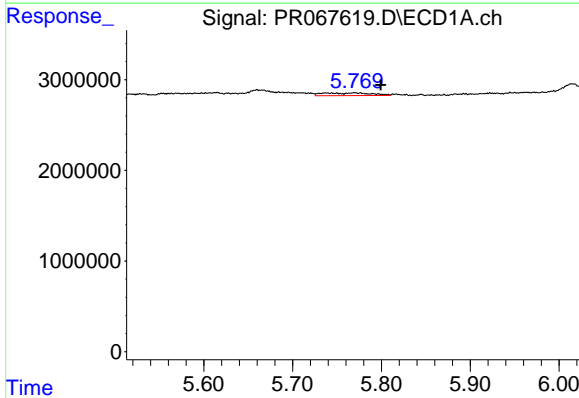
R.T.: 5.431 min
 Delta R.T.: 0.065 min
 Response: 745701
 Conc: 7.25 ng/ml

Instrument :
 ECD_R
 ClientSampleId :



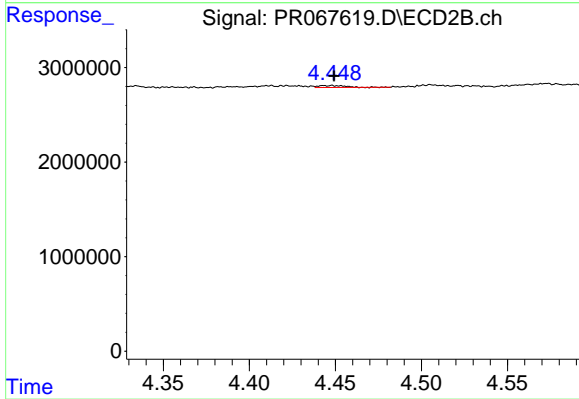
#23 AR-1248-3

R.T.: 4.254 min
 Delta R.T.: -0.021 min
 Response: 480428
 Conc: 3.34 ng/ml



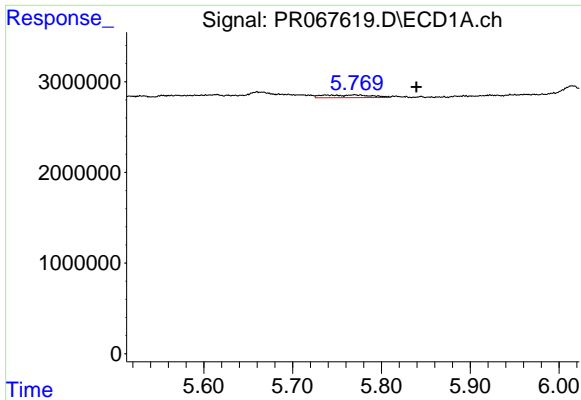
#24 AR-1248-4

R.T.: 5.770 min
 Delta R.T.: -0.029 min
 Response: 1112365
 Conc: 11.85 ng/ml



#24 AR-1248-4

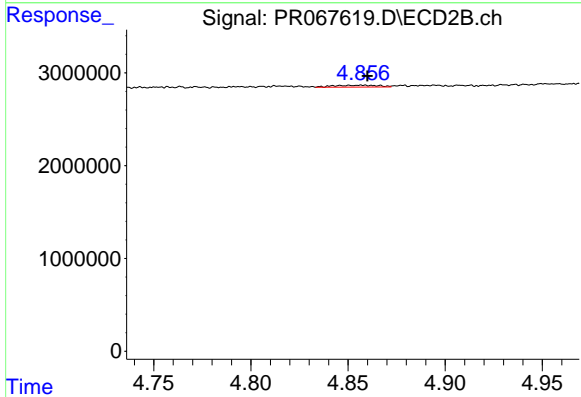
R.T.: 4.448 min
 Delta R.T.: 0.000 min
 Response: 211324
 Conc: 1.23 ng/ml



#25 AR-1248-5

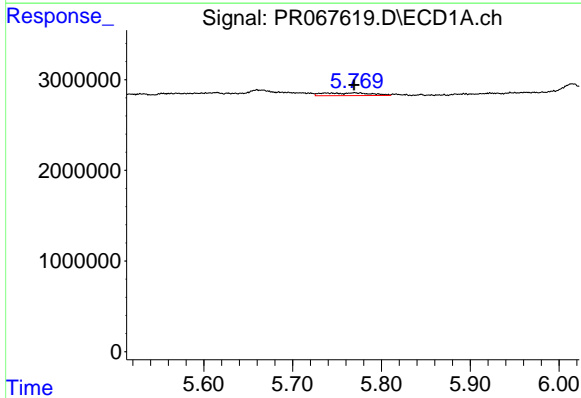
R.T.: 5.770 min
 Delta R.T.: -0.069 min
 Response: 1112365
 Conc: 9.63 ng/ml

Instrument :
 ECD_R
 ClientSampleId :



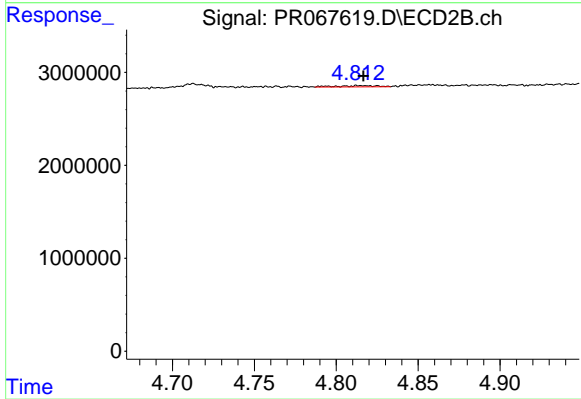
#25 AR-1248-5

R.T.: 4.857 min
 Delta R.T.: -0.003 min
 Response: 316981
 Conc: 1.93 ng/ml



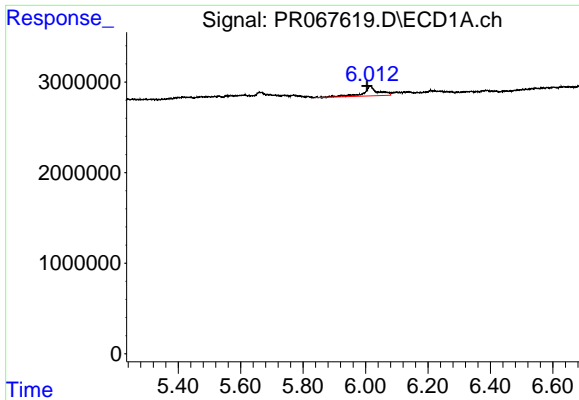
#26 AR-1254-1

R.T.: 5.770 min
 Delta R.T.: 0.001 min
 Response: 1112365
 Conc: 9.91 ng/ml



#26 AR-1254-1

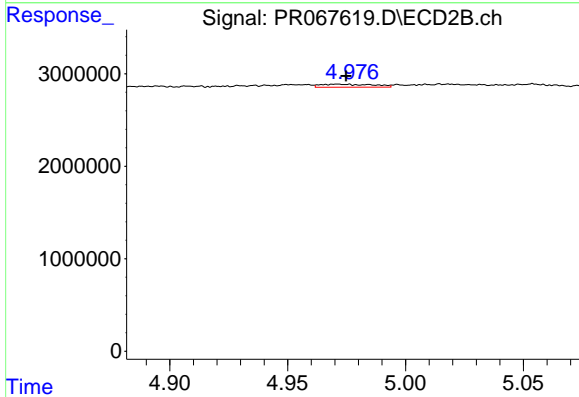
R.T.: 4.806 min
 Delta R.T.: -0.011 min
 Response: 224524
 Conc: 0.86 ng/ml



#27 AR-1254-2

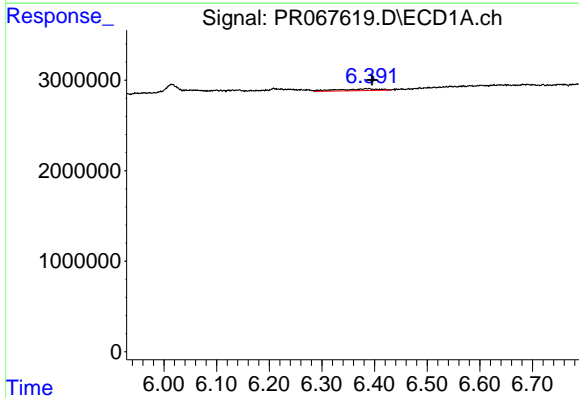
R.T.: 6.015 min
 Delta R.T.: 0.010 min
 Response: 3621885
 Conc: 21.58 ng/ml

Instrument :
 ECD_R
 ClientSampleId :



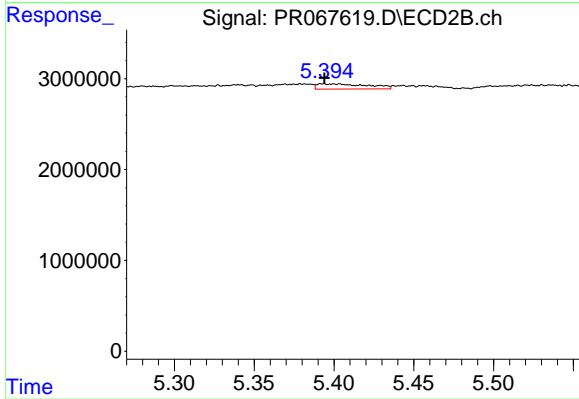
#27 AR-1254-2

R.T.: 4.971 min
 Delta R.T.: -0.004 min
 Response: 496488
 Conc: 2.08 ng/ml



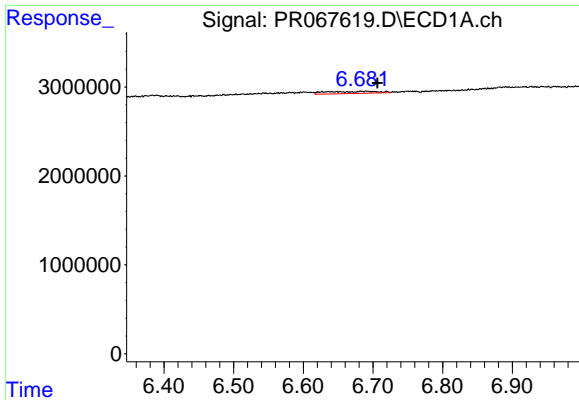
#28 AR-1254-3

R.T.: 6.388 min
 Delta R.T.: -0.008 min
 Response: 1070473
 Conc: 6.03 ng/ml



#28 AR-1254-3

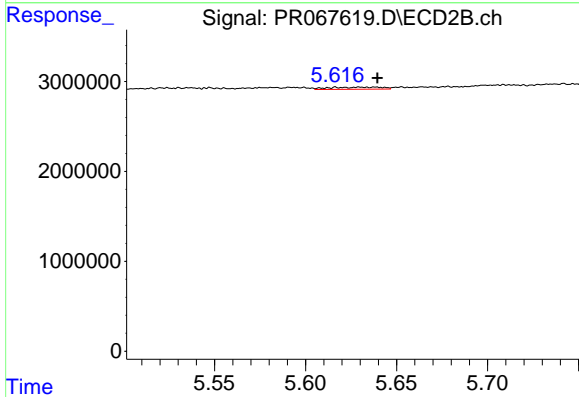
R.T.: 5.403 min
 Delta R.T.: 0.009 min
 Response: 1278063
 Conc: 3.13 ng/ml



#29 AR-1254-4

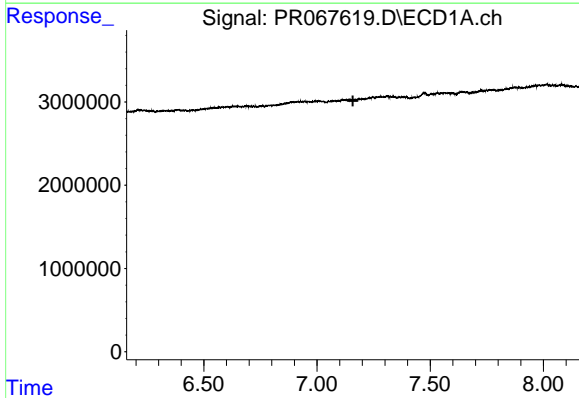
R.T.: 6.690 min
 Delta R.T.: -0.016 min
 Response: 1222356
 Conc: 11.41 ng/ml

Instrument :
 ECD_R
 ClientSampleId :



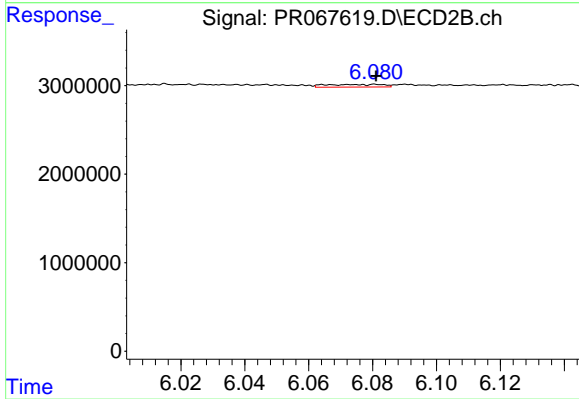
#29 AR-1254-4

R.T.: 5.630 min
 Delta R.T.: -0.010 min
 Response: 469070
 Conc: 2.01 ng/ml



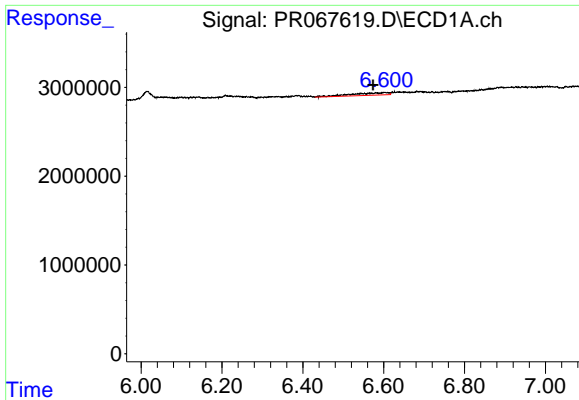
#30 AR-1254-5

R.T.: 0.000 min
 Exp R.T. : 7.159 min
 Response: 0
 Conc: N.D.



#30 AR-1254-5

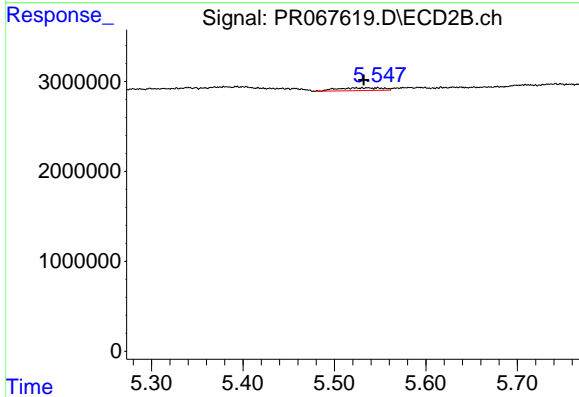
R.T.: 6.074 min
 Delta R.T.: -0.008 min
 Response: 379671
 Conc: 0.99 ng/ml



#31 AR-1260-1

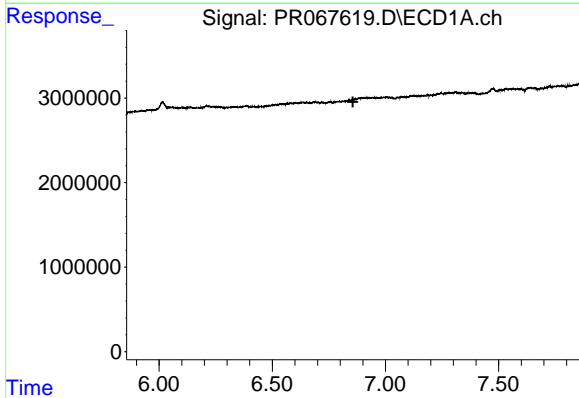
R.T.: 6.602 min
 Delta R.T.: 0.027 min
 Response: 1744618
 Conc: 10.90 ng/ml

Instrument :
 ECD_R
 ClientSampleId :



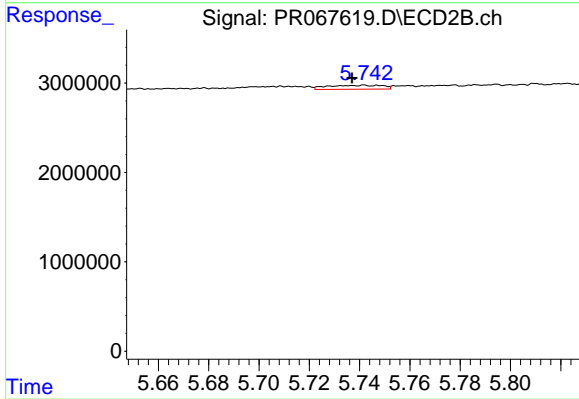
#31 AR-1260-1

R.T.: 5.531 min
 Delta R.T.: -0.001 min
 Response: 1086891
 Conc: 3.18 ng/ml



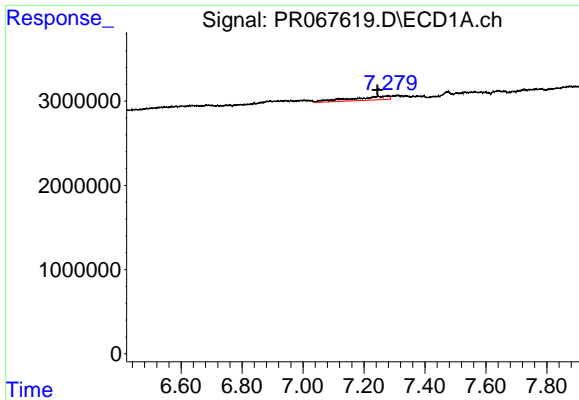
#32 AR-1260-2

R.T.: 0.000 min
 Exp R.T. : 6.856 min
 Response: 0
 Conc: N.D.



#32 AR-1260-2

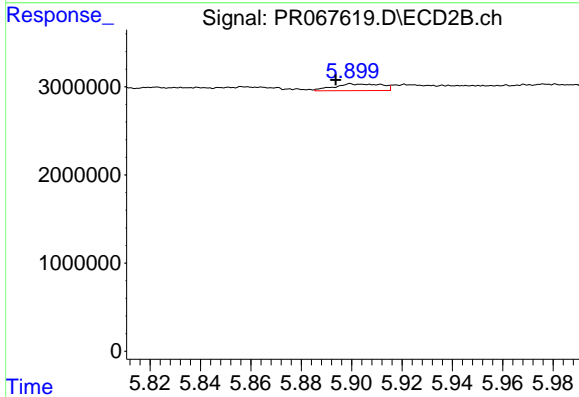
R.T.: 5.742 min
 Delta R.T.: 0.005 min
 Response: 674056
 Conc: 1.64 ng/ml



#33 AR-1260-3

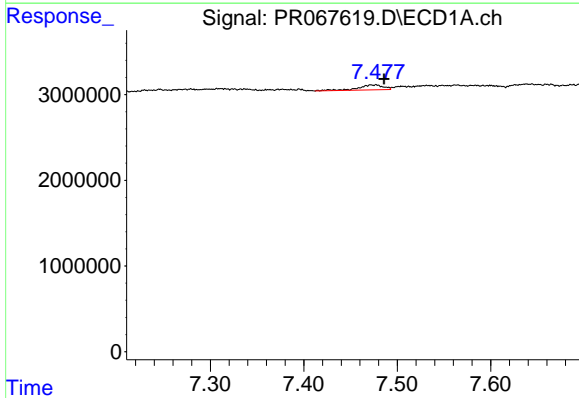
R.T.: 7.279 min
 Delta R.T.: 0.034 min
 Response: 3944992
 Conc: 28.90 ng/ml

Instrument :
 ECD_R
 ClientSampleId :



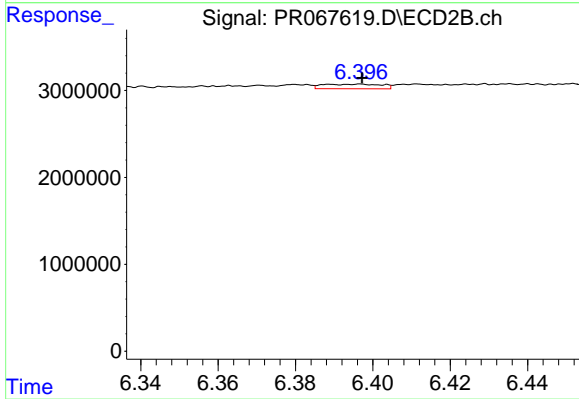
#33 AR-1260-3

R.T.: 5.900 min
 Delta R.T.: 0.007 min
 Response: 1002499
 Conc: 2.64 ng/ml



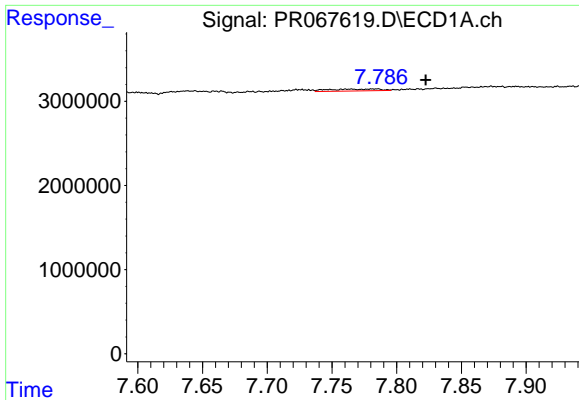
#34 AR-1260-4

R.T.: 7.475 min
 Delta R.T.: -0.011 min
 Response: 1109925
 Conc: 7.52 ng/ml



#34 AR-1260-4

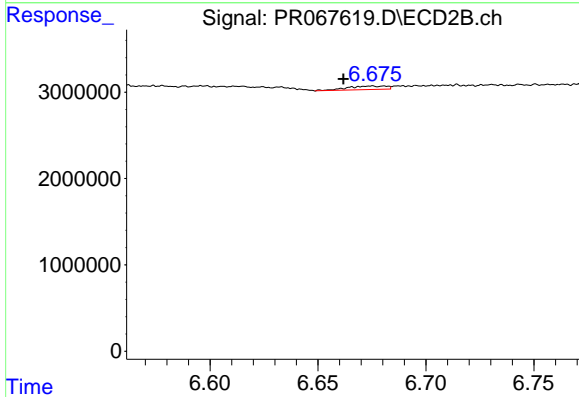
R.T.: 6.397 min
 Delta R.T.: 0.000 min
 Response: 561300
 Conc: 1.83 ng/ml



#35 AR-1260-5

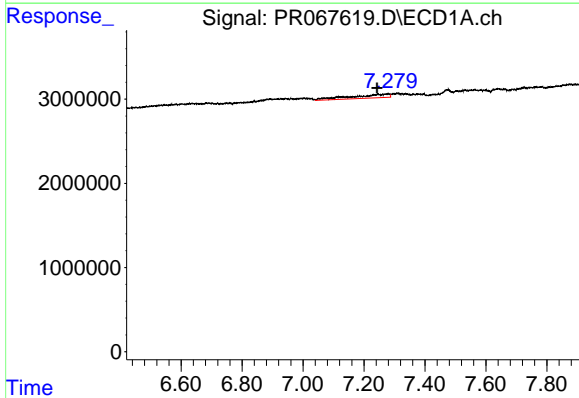
R.T.: 7.783 min
 Delta R.T.: -0.040 min
 Response: 633270
 Conc: 2.45 ng/ml

Instrument :
 ECD_R
 ClientSampleId :



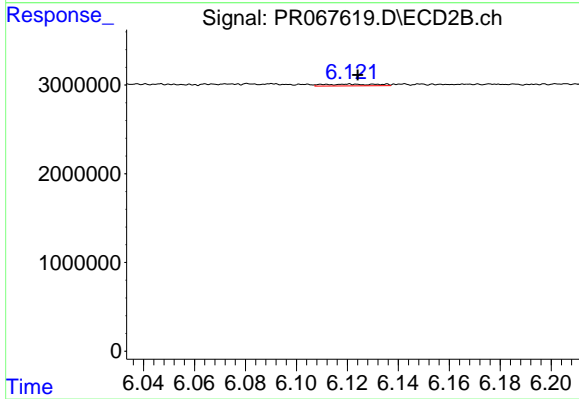
#35 AR-1260-5

R.T.: 6.675 min
 Delta R.T.: 0.013 min
 Response: 510382
 Conc: 0.80 ng/ml



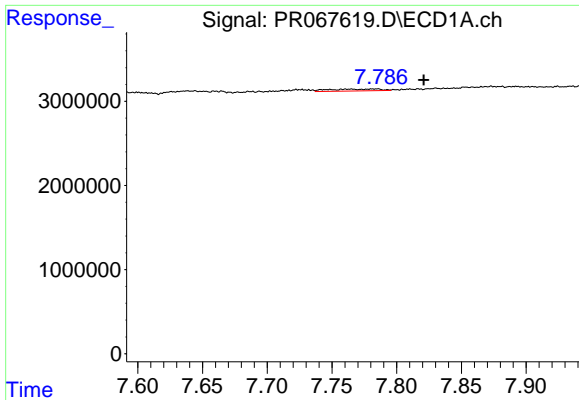
#36 AR-1262-1

R.T.: 7.279 min
 Delta R.T.: 0.036 min
 Response: 3944992
 Conc: 23.89 ng/ml



#36 AR-1262-1

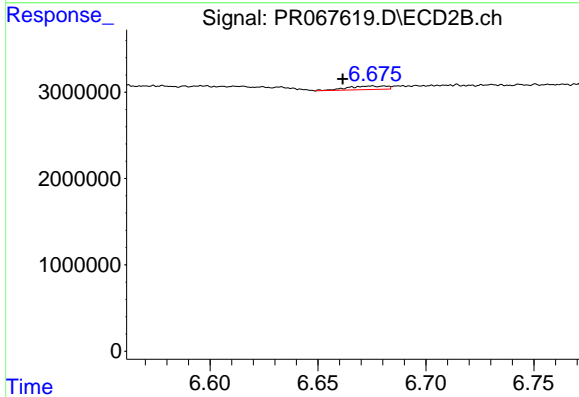
R.T.: 6.111 min
 Delta R.T.: -0.013 min
 Response: 284516
 Conc: 0.71 ng/ml



#37 AR-1262-2

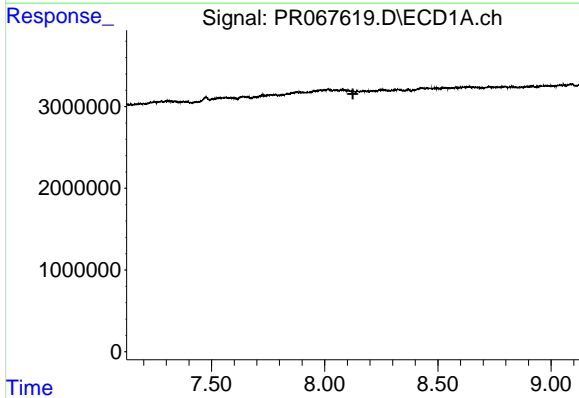
R.T.: 7.783 min
 Delta R.T.: -0.038 min
 Response: 633270
 Conc: 2.58 ng/ml

Instrument :
 ECD_R
 ClientSampleId :



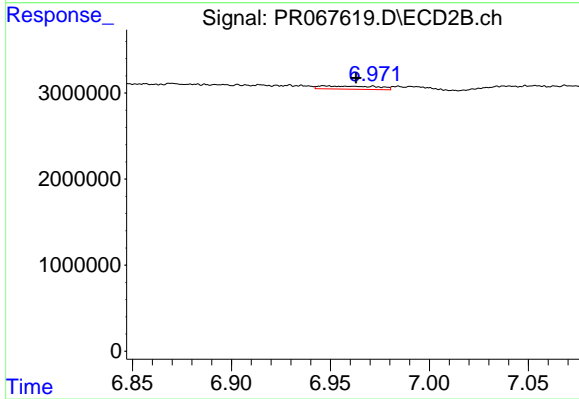
#37 AR-1262-2

R.T.: 6.675 min
 Delta R.T.: 0.013 min
 Response: 510382
 Conc: 0.84 ng/ml



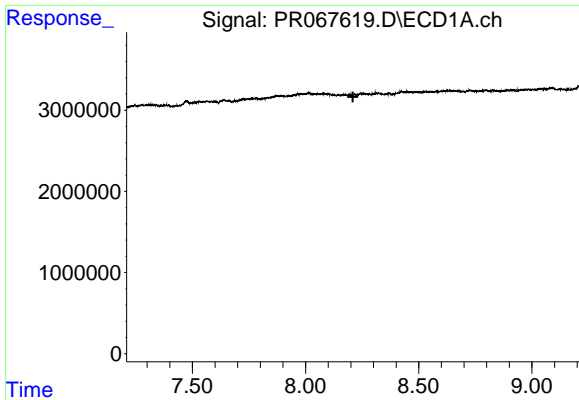
#38 AR-1262-3

R.T.: 0.000 min
 Exp R.T. : 8.125 min
 Response: 0
 Conc: N.D.



#38 AR-1262-3

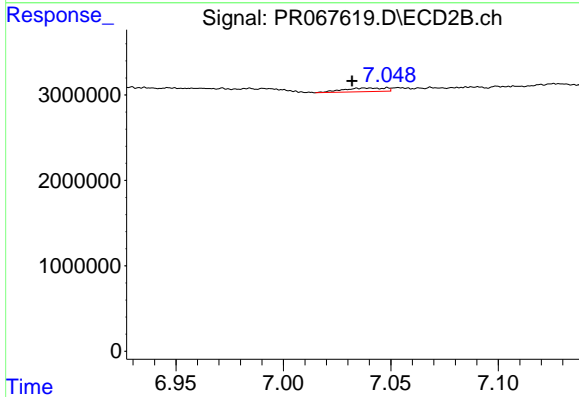
R.T.: 6.947 min
 Delta R.T.: -0.016 min
 Response: 717639
 Conc: 3.11 ng/ml



#39 AR-1262-4

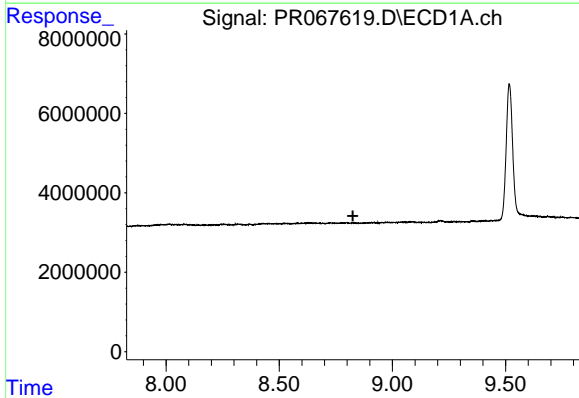
R.T.: 0.000 min
 Exp R.T. : 8.209 min
 Response: 0
 Conc: N.D.

Instrument :
 ECD_R
 ClientSampleId :



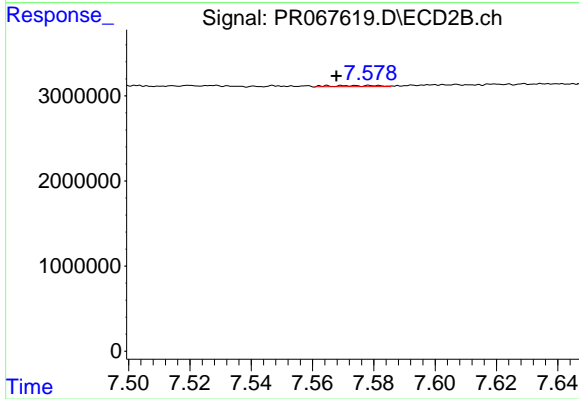
#39 AR-1262-4

R.T.: 7.039 min
 Delta R.T.: 0.007 min
 Response: 570359
 Conc: 1.37 ng/ml



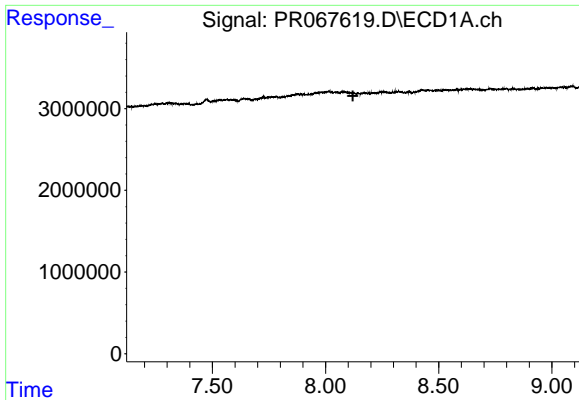
#40 AR-1262-5

R.T.: 0.000 min
 Exp R.T. : 8.826 min
 Response: 0
 Conc: N.D.



#40 AR-1262-5

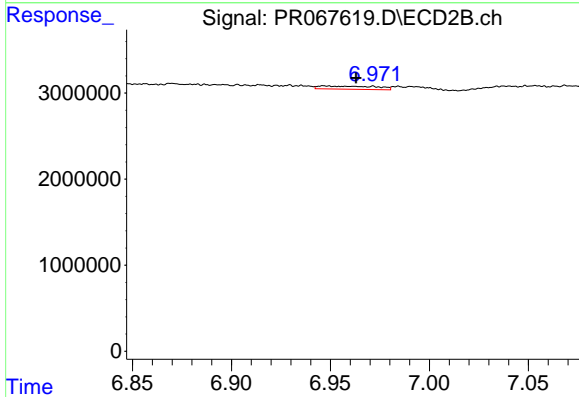
R.T.: 7.565 min
 Delta R.T.: -0.003 min
 Response: 135939
 Conc: 0.81 ng/ml



#41 AR-1268-1

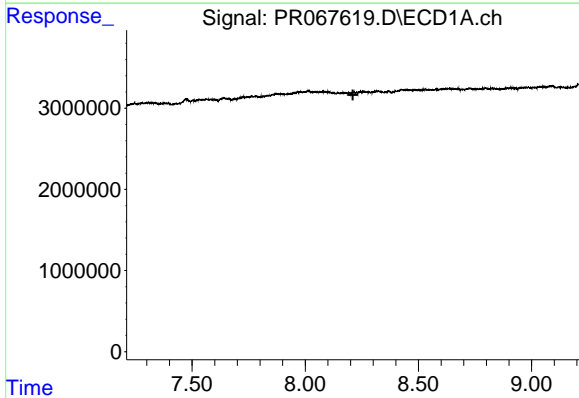
R.T.: 0.000 min
 Exp R.T.: 8.121 min
 Response: 0
 Conc: N.D.

Instrument :
 ECD_R
 ClientSampleId :



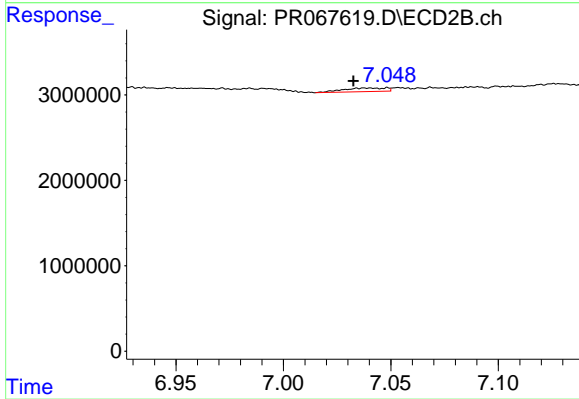
#41 AR-1268-1

R.T.: 6.947 min
 Delta R.T.: -0.016 min
 Response: 717639
 Conc: 1.06 ng/ml



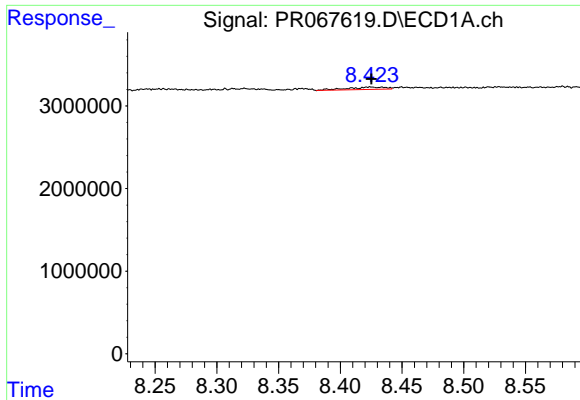
#42 AR-1268-2

R.T.: 0.000 min
 Exp R.T.: 8.210 min
 Response: 0
 Conc: N.D.



#42 AR-1268-2

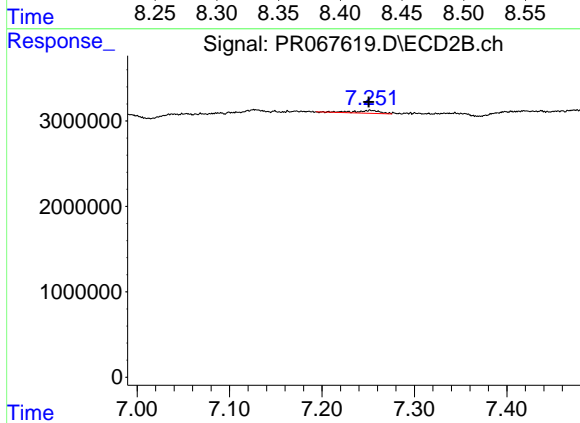
R.T.: 7.039 min
 Delta R.T.: 0.006 min
 Response: 570359
 Conc: 0.93 ng/ml



#43 AR-1268-3

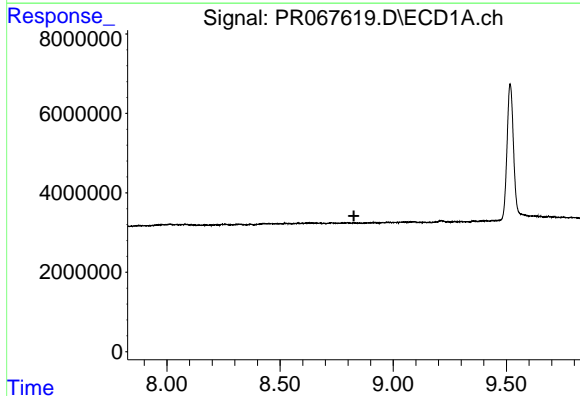
R.T.: 8.424 min
 Delta R.T.: -0.001 min
 Response: 614340
 Conc: 2.10 ng/ml

Instrument :
 ECD_R
 ClientSampleId :



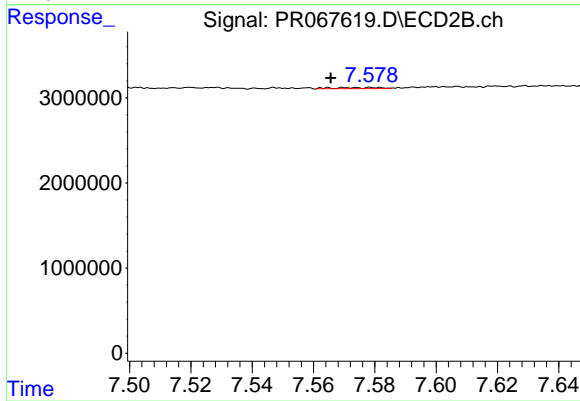
#43 AR-1268-3

R.T.: 7.252 min
 Delta R.T.: 0.002 min
 Response: 651379
 Conc: 1.28 ng/ml



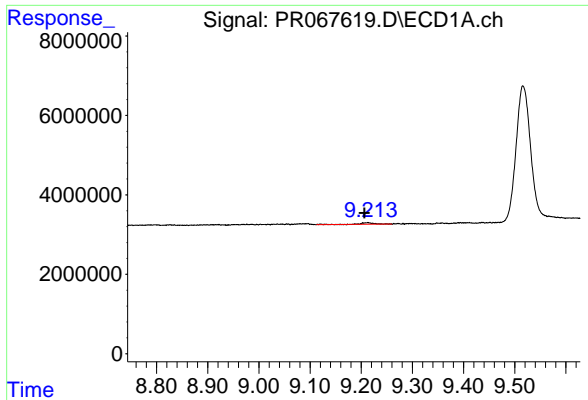
#44 AR-1268-4

R.T.: 0.000 min
 Exp R.T. : 8.826 min
 Response: 0
 Conc: N.D.



#44 AR-1268-4

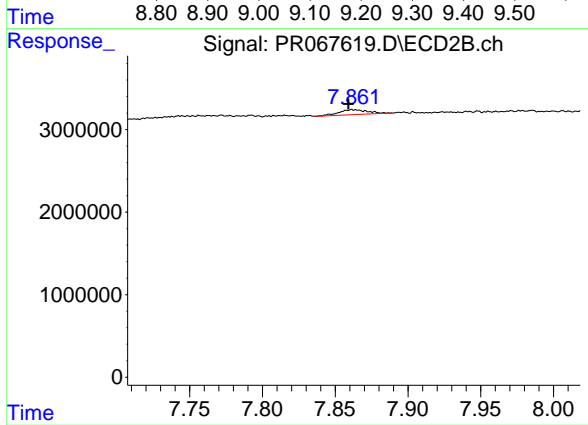
R.T.: 7.565 min
 Delta R.T.: 0.000 min
 Response: 135939
 Conc: 0.70 ng/ml



#45 AR-1268-5

R.T.: 9.212 min
Delta R.T.: 0.006 min
Response: 645625
Conc: 0.73 ng/ml

Instrument :
ECD_R
ClientSampleId :



#45 AR-1268-5

R.T.: 7.862 min
Delta R.T.: 0.003 min
Response: 822798
Conc: 0.57 ng/ml