

Data Path : Z:\pestpcbsrv\HPCHEM1\ECD_R\Data\PR071118\
 Data File : PR030155.D
 Signal(s) : Signal #1: ECD1A.ch Signal #2: ECD2B.ch
 Acq On : 10 Jul 2018 17:01
 Operator : MA/SM
 Sample : J3827-01
 Misc :
 ALS Vial : 16 Sample Multiplier: 1

Instrument :
 ECD_R
 ClientSampled :

Integration File signal 1: autoint1.e
 Integration File signal 2: autoint2.e
 Quant Time: Jul 11 04:31:00 2018
 Quant Method : \\TERASTORAGE\Terastorage\pestpcbsrv\HPCHEM1\ECD_R\Method\PR071018.M
 Quant Title : GC EXTRACTABLES
 QLast Update : Tue Jul 10 01:27:38 2018
 Response via : Initial Calibration
 Integrator: ChemStation

Volume Inj. : 2 µl
 Signal #1 Phase : ZB-MR2 Signal #2 Phase: ZB-MR2
 Signal #1 Info : 30Mx0.32mmx 0.50µ Signal #2 Info : 30M x 0.32mm x 0.25µm

Compound	RT#1	RT#2	Resp#1	Resp#2	ng/ml	ng/ml

System Monitoring Compounds						
1) SA Tetrachlo...	4.563	3.710	406.1E6	759.7E6	25.863	28.647
2) SA Decachlor...	10.327	8.623	405.6E6	230.6E6	14.063	10.224 #
Target Compounds						
3) L1 AR-1016-1	0.000	4.565	0	3598743	N.D.	4.014 #
4) L1 AR-1016-2	0.000	4.963	0	18190108	N.D.	18.469 #
5) L1 AR-1016-3	5.882	5.055	8319490	19069997	17.336	19.334
6) L1 AR-1016-4	6.136	5.213	29670306	14474085	61.295	12.589 #
7) L1 AR-1016-5	0.000	5.560	0	34707020	N.D.	30.184 #
8) L2 AR-1221-1	0.000	3.894	0	9139775	N.D.	25.133 #
9) L2 AR-1221-2	4.867	4.006	10248509	32331646	59.855	106.591 #
10) L2 AR-1221-3	4.886	4.064	12086891	13628048	23.350	14.340 #
11) L3 AR-1232-1	4.886	4.064	12086891	13628048	42.392	24.422 #
12) L3 AR-1232-2	0.000	4.963	0	18190108	N.D.	43.777 #
13) L3 AR-1232-3	0.000	5.000	0	32132796	N.D.	101.940 #
14) L3 AR-1232-4	5.882	5.560	8319490	34707020	41.364	62.867 #
15) L3 AR-1232-5	0.000	5.605	0	11950925	N.D.	20.331 #
16) L4 AR-1242-1	0.000	4.565	0	3598743	N.D.	4.727 #
17) L4 AR-1242-2	0.000	4.794	0	18508890	N.D.	10.431 #
18) L4 AR-1242-3	0.000	4.836	0	11773254	N.D.	10.058 #
19) L4 AR-1242-4	5.882	5.055	8319490	19069997	19.696	21.219
20) L4 AR-1242-5	6.136	5.213	29670306	14474085	69.887	13.986 #
21) L5 AR-1248-1	0.000	5.000	0	32132796	N.D.	30.056 #
22) L5 AR-1248-2	6.136	5.055	29670306	19069997	48.491	17.058 #
23) L5 AR-1248-3	6.573	5.213	16377421	14474085	28.498	10.316 #
24) L5 AR-1248-4	6.573	5.560	16377421	34707020	21.979	16.727
25) L5 AR-1248-5	6.786	5.605	26004438	11950925	33.860	7.907 #
26) L6 AR-1254-1	0.000	5.000	0	32132796	N.D.	39.544 #
27) L6 AR-1254-2	6.786	5.699	26004438	12022642	21.397	6.053 #
28) L6 AR-1254-3	7.157	6.097	30211430	26074612	22.241	8.734 #
29) L6 AR-1254-4	7.435	6.321	18812909	17446024	16.734	7.447 #
30) L6 AR-1254-5	7.854	6.730	28283751	54194829	24.921	23.006
31) L7 AR-1260-1	7.316	6.222	7395251	33984634	6.637	16.402 #
32) L7 AR-1260-2	7.560	6.408	25268849	44695324	17.502	17.742
33) L7 AR-1260-3	7.982	6.764	7263984	23973160	6.349	12.805 #
34) L7 AR-1260-4	0.000	7.021	0	7607720	N.D.	5.247 #
35) L7 AR-1260-5	8.481	7.261	102.5E6	26202606	38.816	7.972 #
36) L8 AR-1262-1	7.316	6.222	7395251	33984634	8.424	19.632 #
37) L8 AR-1262-2	7.560	6.408	25268849	44695324	22.247	20.919
38) L8 AR-1262-3	7.982	6.764	7263984	23973160	4.567	9.573 #
39) L8 AR-1262-4	0.000	7.021	0	7607720	N.D.	3.920 #
40) L8 AR-1262-5	8.481	7.261	102.5E6	26202606	34.956	7.212 #
41) L9 AR-1268-1	8.810	7.540	15541510	11737280	4.764	3.687

Data Path : Z:\pestpcbsrv\HPCHEM1\ECD_R\Data\PR071118\
 Data File : PR030155.D
 Signal(s) : Signal #1: ECD1A.ch Signal #2: ECD2B.ch
 Acq On : 10 Jul 2018 17:01
 Operator : MA/SM
 Sample : J3827-01
 Misc :
 ALS Vial : 16 Sample Multiplier: 1

Instrument :
 ECD_R
 ClientSampleId :

Integration File signal 1: autoint1.e
 Integration File signal 2: autoint2.e
 Quant Time: Jul 11 04:31:00 2018
 Quant Method : \\TERASTORAGE\Terastorage\pestpcbsrv\HPCHEM1\ECD_R\Method\PR071018.M
 Quant Title : GC EXTRACTABLES
 QLast Update : Tue Jul 10 01:27:38 2018
 Response via : Initial Calibration
 Integrator: ChemStation

Volume Inj. : 2 µl
 Signal #1 Phase : ZB-MR1 Signal #2 Phase: ZB-MR2
 Signal #1 Info : 30Mx0.32mmx 0.50µ Signal #2 Info : 30M x 0.32mm x 0.25µm

	Compound	RT#1	RT#2	Resp#1	Resp#2	ng/ml	ng/ml
42)	L9 AR-1268-2	8.892	7.604	22466665	38824439	7.528	13.375 #
43)	L9 AR-1268-3	0.000	7.806	0	16387913	N.D.	6.997 #
44)	L9 AR-1268-4	9.574	8.095	72653855	80142076	63.673	72.193
45)	L9 AR-1268-5	9.913	8.379	22684539	9864309	2.714	1.573 #

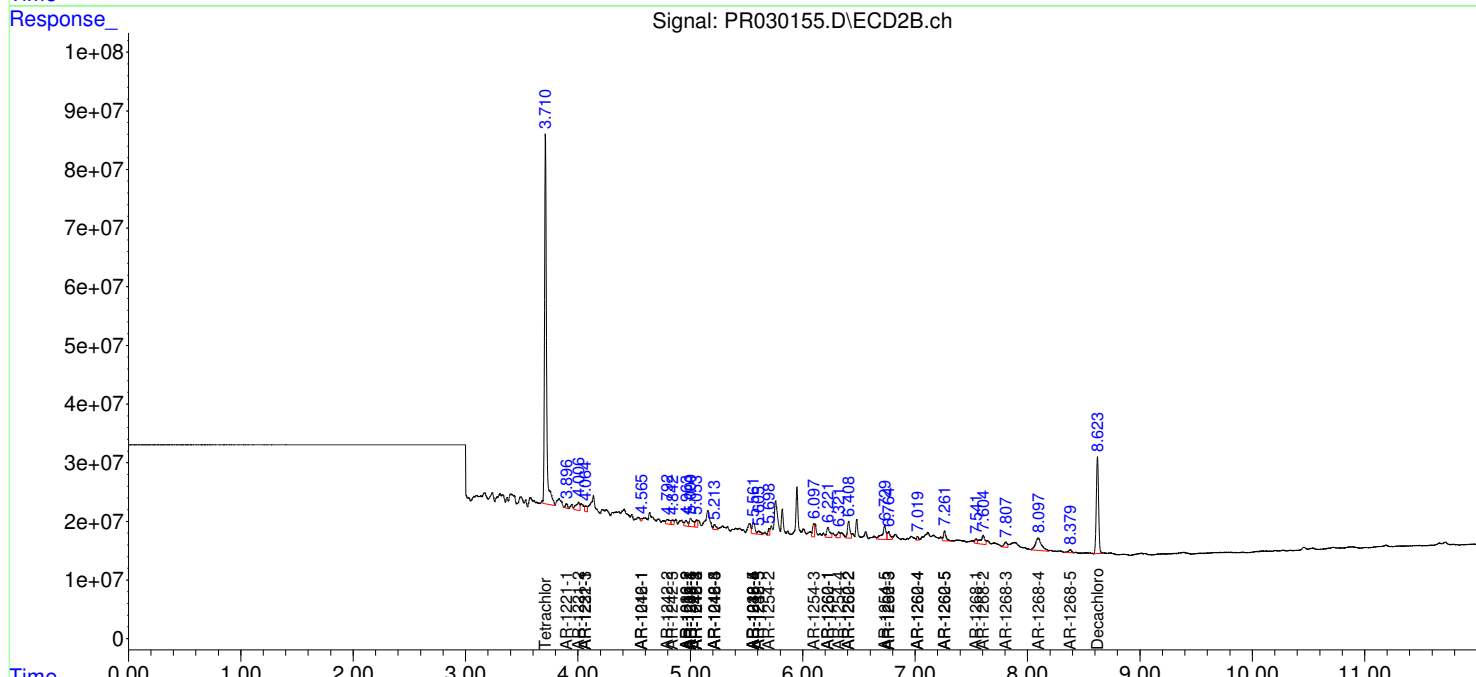
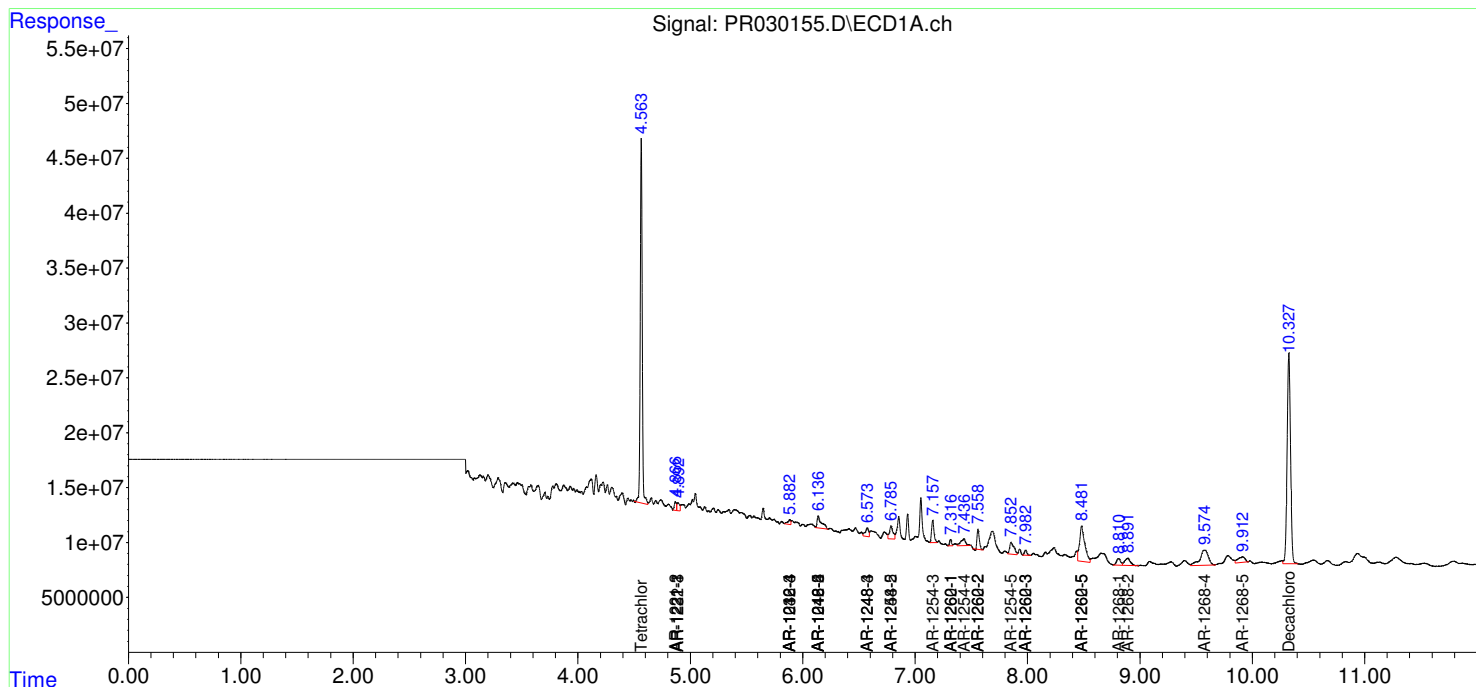
(f)=RT Delta > 1/2 Window (#)=Amounts differ by > 25% (m)=manual int.

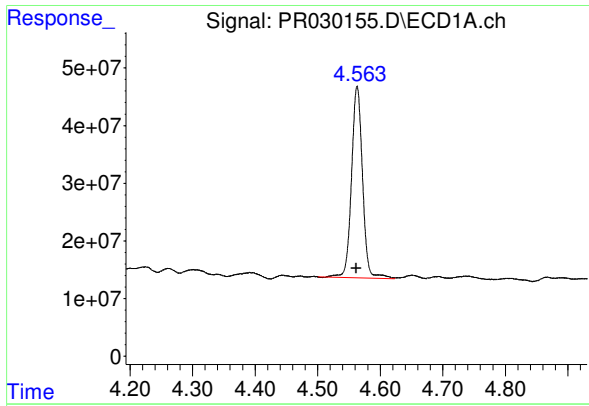
Data Path : Z:\pestpcbsrv\HPCHEM1\ECD_R\Data\PR071118\
 Data File : PR030155.D
 Signal(s) : Signal #1: ECD1A.ch Signal #2: ECD2B.ch
 Acq On : 10 Jul 2018 17:01
 Operator : MA/SM
 Sample : J3827-01
 Misc :
 ALS Vial : 16 Sample Multiplier: 1

Instrument :
 ECD_R
 ClientSampled :

Integration File signal 1: autoint1.e
 Integration File signal 2: autoint2.e
 Quant Time: Jul 11 04:31:00 2018
 Quant Method : \\TERASTORAGE\Terastorage\pestpcbsrv\HPCHEM1\ECD_R\Method\PR071018.M
 Quant Title : GC EXTRACTABLES
 QLast Update : Tue Jul 10 01:27:38 2018
 Response via : Initial Calibration
 Integrator: ChemStation

Volume Inj. : 2 µl
 Signal #1 Phase : ZB-MR1 Signal #2 Phase: ZB-MR2
 Signal #1 Info : 30Mx0.32mmx 0.50µ Signal #2 Info : 30M x 0.32mm x 0.25µm

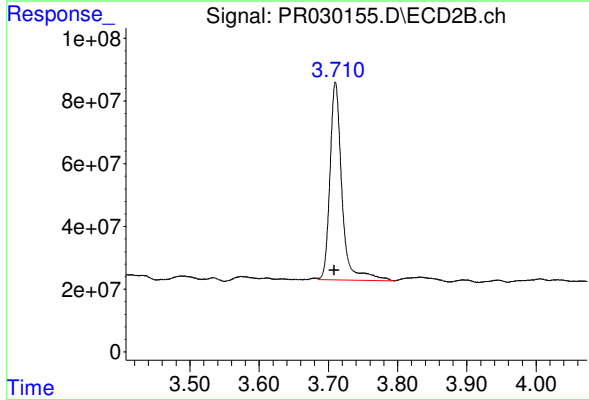




#1 Tetrachloro-m-xylene

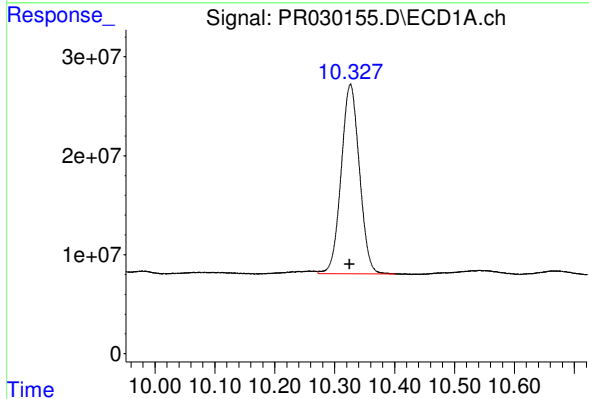
R.T.: 4.563 min
Delta R.T.: 0.001 min
Response: 406076280
Conc: 25.86 ng/ml

Instrument :
ECD_R
ClientSampleId :



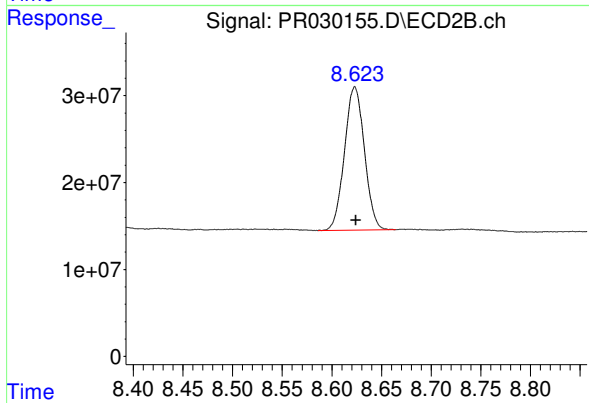
#1 Tetrachloro-m-xylene

R.T.: 3.710 min
Delta R.T.: 0.002 min
Response: 759743010
Conc: 28.65 ng/ml



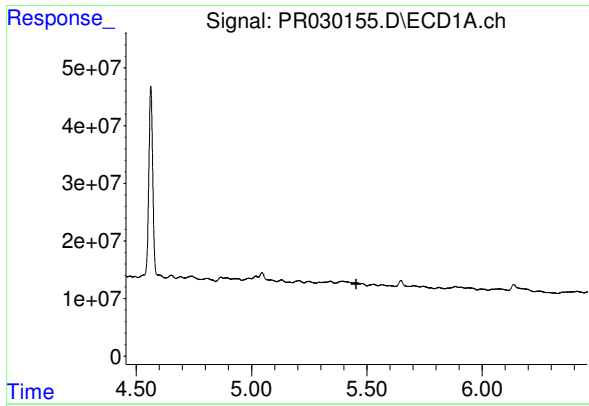
#2 Decachlorobiphenyl

R.T.: 10.327 min
Delta R.T.: 0.002 min
Response: 405596310
Conc: 14.06 ng/ml



#2 Decachlorobiphenyl

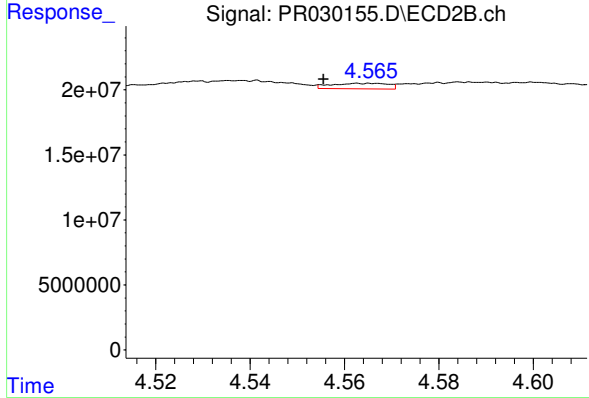
R.T.: 8.623 min
Delta R.T.: 0.000 min
Response: 230550083
Conc: 10.22 ng/ml



#3 AR-1016-1

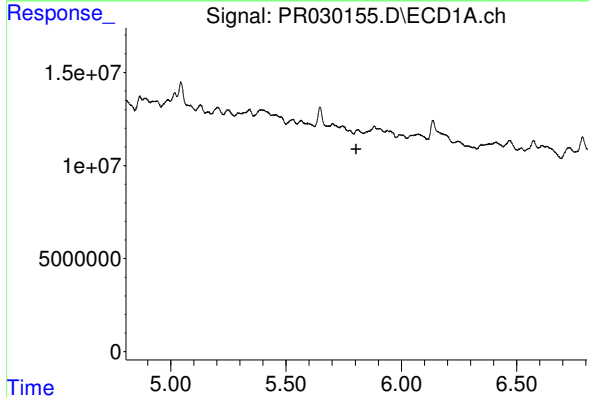
R.T.: 0.000 min
 Exp R.T. : 5.454 min
 Response: 0
 Conc: N.D.

Instrument :
 ECD_R
 ClientSampleId :



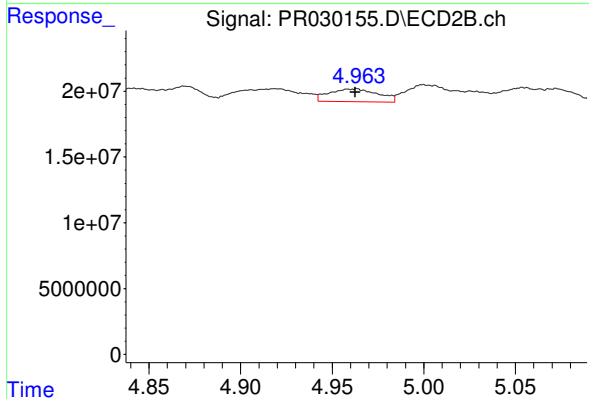
#3 AR-1016-1

R.T.: 4.565 min
 Delta R.T.: 0.010 min
 Response: 3598743
 Conc: 4.01 ng/ml



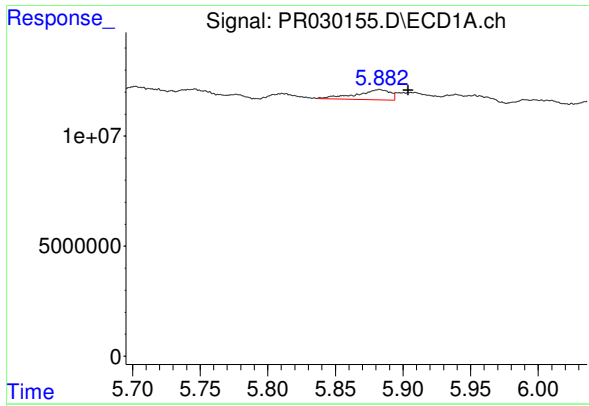
#4 AR-1016-2

R.T.: 0.000 min
 Exp R.T. : 5.805 min
 Response: 0
 Conc: N.D.



#4 AR-1016-2

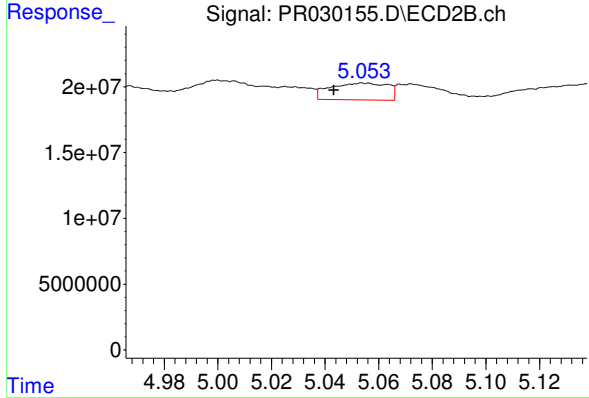
R.T.: 4.963 min
 Delta R.T.: 0.000 min
 Response: 18190108
 Conc: 18.47 ng/ml



#5 AR-1016-3

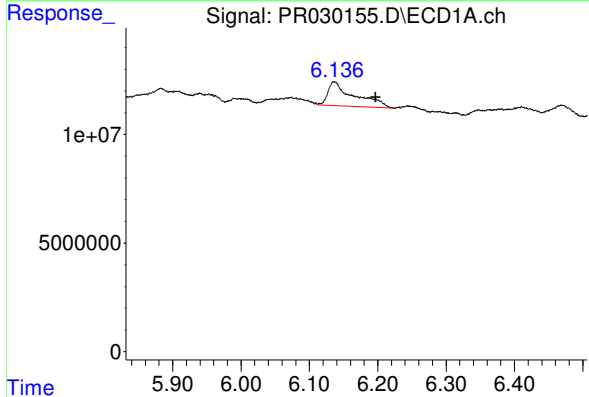
R.T.: 5.882 min
 Delta R.T.: -0.021 min
 Response: 8319490
 Conc: 17.34 ng/ml

Instrument :
 ECD_R
 ClientSampleId :



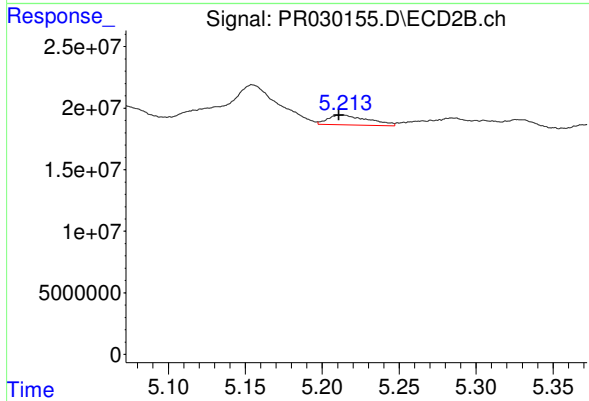
#5 AR-1016-3

R.T.: 5.055 min
 Delta R.T.: 0.011 min
 Response: 19069997
 Conc: 19.33 ng/ml



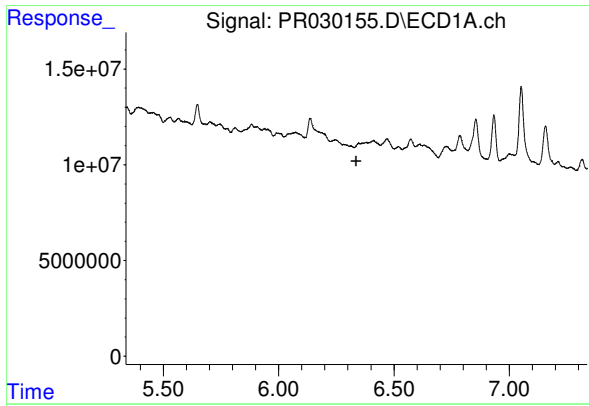
#6 AR-1016-4

R.T.: 6.136 min
 Delta R.T.: -0.060 min
 Response: 29670306
 Conc: 61.29 ng/ml



#6 AR-1016-4

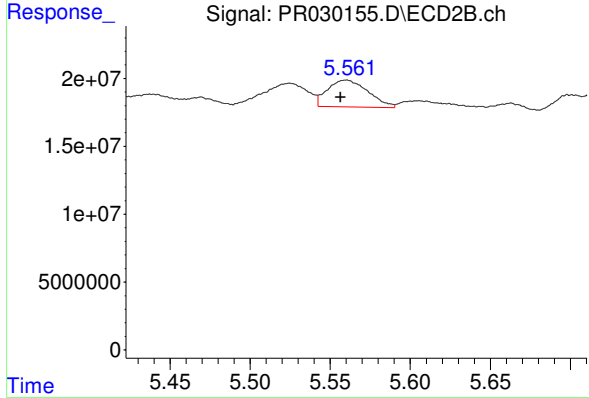
R.T.: 5.213 min
 Delta R.T.: 0.003 min
 Response: 14474085
 Conc: 12.59 ng/ml



#7 AR-1016-5

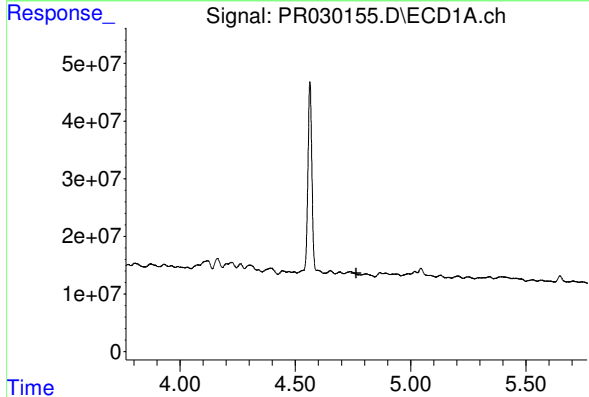
R.T.: 0.000 min
 Exp R.T.: 6.337 min
 Response: 0
 Conc: N.D.

Instrument :
 ECD_R
 ClientSampleId :



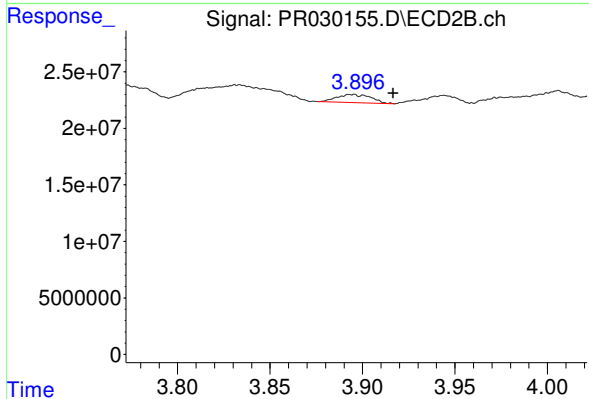
#7 AR-1016-5

R.T.: 5.560 min
 Delta R.T.: 0.003 min
 Response: 34707020
 Conc: 30.18 ng/ml



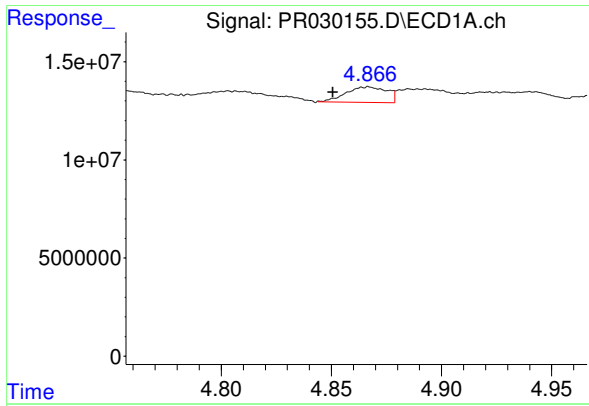
#8 AR-1221-1

R.T.: 0.000 min
 Exp R.T.: 4.765 min
 Response: 0
 Conc: N.D.



#8 AR-1221-1

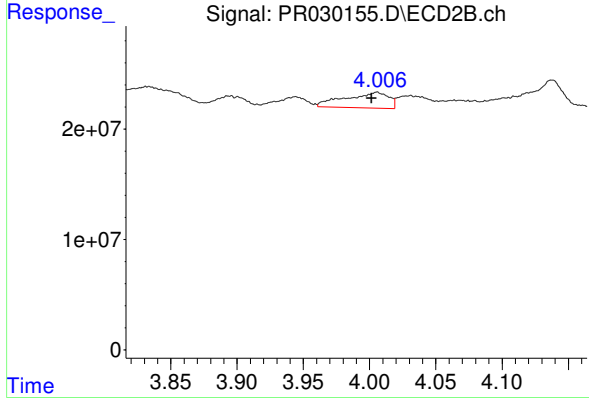
R.T.: 3.894 min
 Delta R.T.: -0.022 min
 Response: 9139775
 Conc: 25.13 ng/ml



#9 AR-1221-2

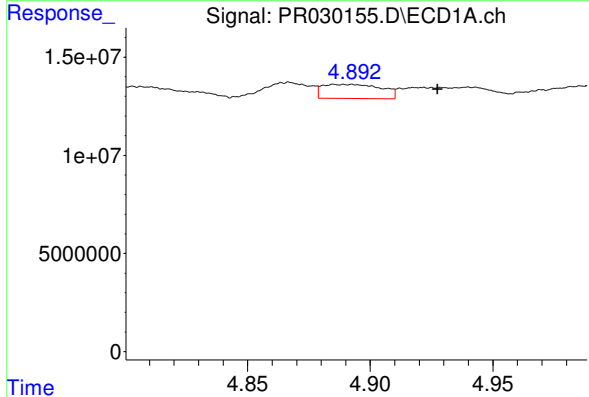
R.T.: 4.867 min
 Delta R.T.: 0.016 min
 Response: 10248509
 Conc: 59.85 ng/ml

Instrument :
 ECD_R
 ClientSampleId :



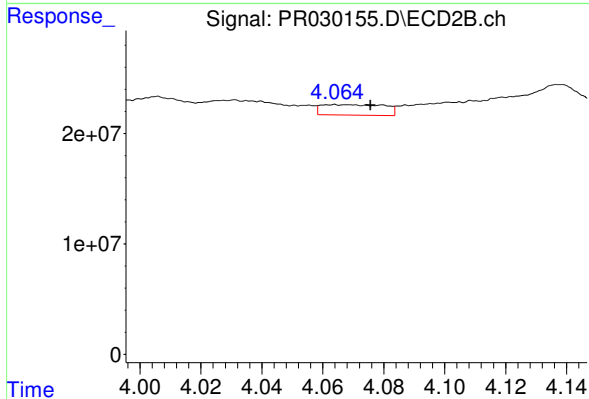
#9 AR-1221-2

R.T.: 4.006 min
 Delta R.T.: 0.004 min
 Response: 32331646
 Conc: 106.59 ng/ml



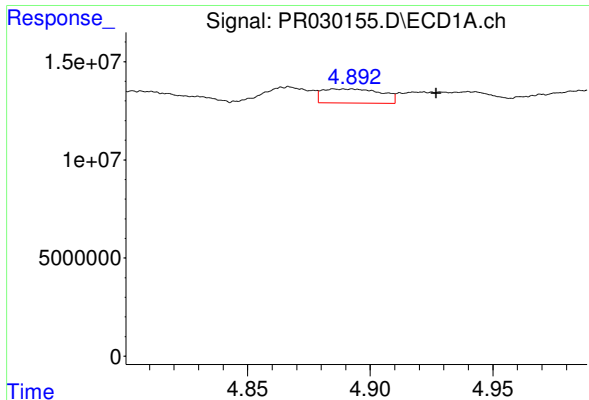
#10 AR-1221-3

R.T.: 4.886 min
 Delta R.T.: -0.041 min
 Response: 12086891
 Conc: 23.35 ng/ml



#10 AR-1221-3

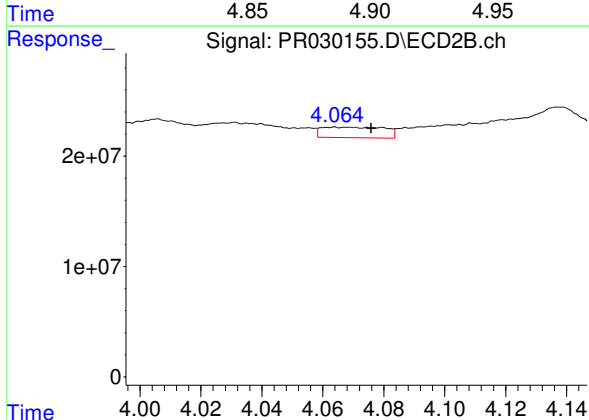
R.T.: 4.064 min
 Delta R.T.: -0.012 min
 Response: 13628048
 Conc: 14.34 ng/ml



#11 AR-1232-1

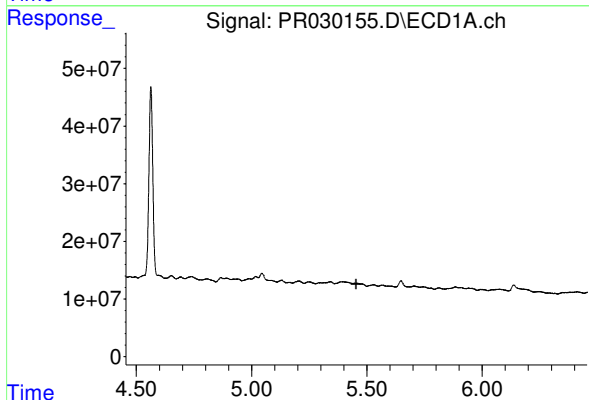
R.T.: 4.886 min
 Delta R.T.: -0.041 min
 Response: 12086891
 Conc: 42.39 ng/ml

Instrument :
 ECD_R
 ClientSampleId :



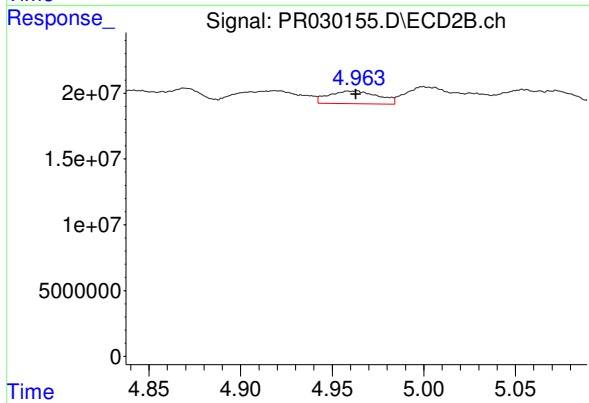
#11 AR-1232-1

R.T.: 4.064 min
 Delta R.T.: -0.012 min
 Response: 13628048
 Conc: 24.42 ng/ml



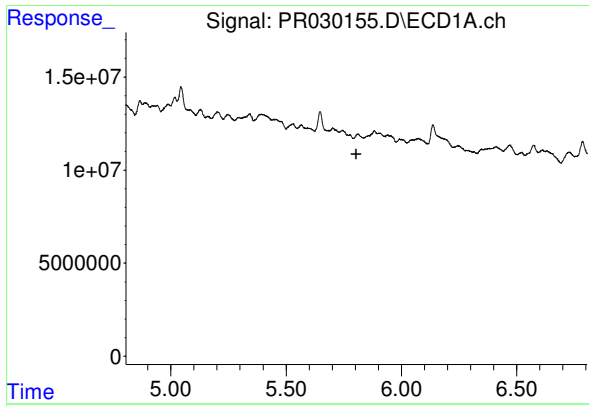
#12 AR-1232-2

R.T.: 0.000 min
 Exp R.T. : 5.454 min
 Response: 0
 Conc: N.D.



#12 AR-1232-2

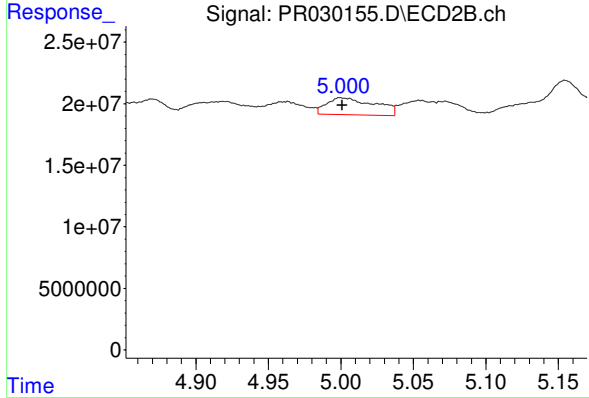
R.T.: 4.963 min
 Delta R.T.: 0.000 min
 Response: 18190108
 Conc: 43.78 ng/ml



#13 AR-1232-3

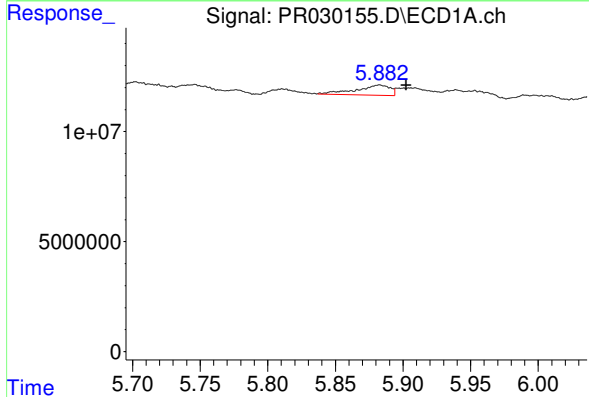
R.T.: 0.000 min
 Exp R.T.: 5.804 min
 Response: 0
 Conc: N.D.

Instrument :
 ECD_R
 ClientSampleId :



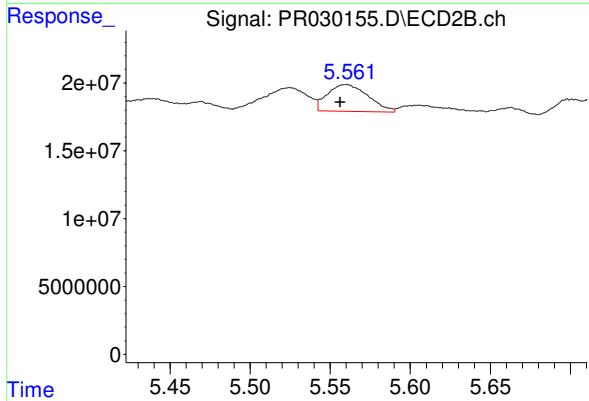
#13 AR-1232-3

R.T.: 5.000 min
 Delta R.T.: -0.001 min
 Response: 32132796
 Conc: 101.94 ng/ml



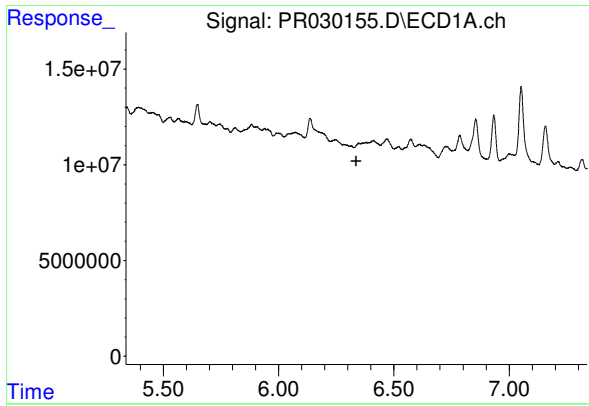
#14 AR-1232-4

R.T.: 5.882 min
 Delta R.T.: -0.020 min
 Response: 8319490
 Conc: 41.36 ng/ml



#14 AR-1232-4

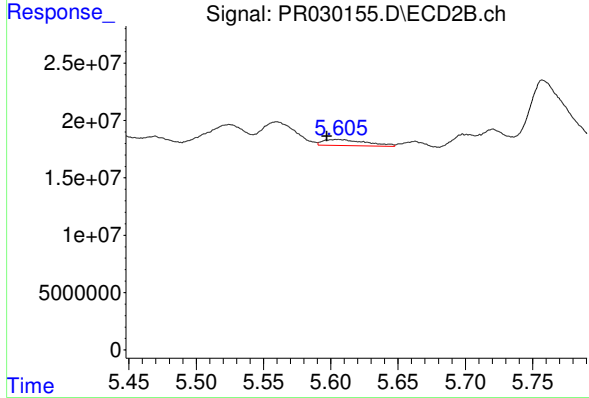
R.T.: 5.560 min
 Delta R.T.: 0.004 min
 Response: 34707020
 Conc: 62.87 ng/ml



#15 AR-1232-5

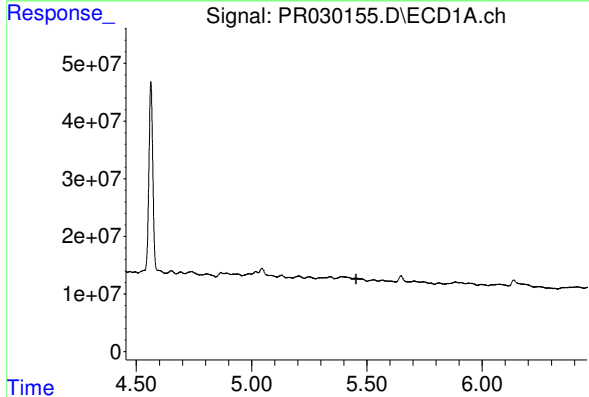
R.T.: 0.000 min
 Exp R.T.: 6.337 min
 Response: 0
 Conc: N.D.

Instrument :
 ECD_R
 ClientSampleId :



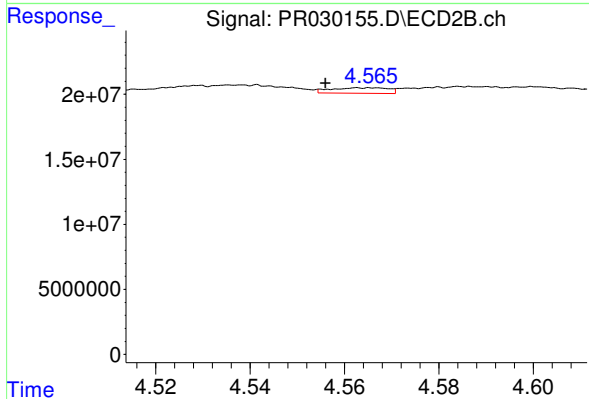
#15 AR-1232-5

R.T.: 5.605 min
 Delta R.T.: 0.008 min
 Response: 11950925
 Conc: 20.33 ng/ml



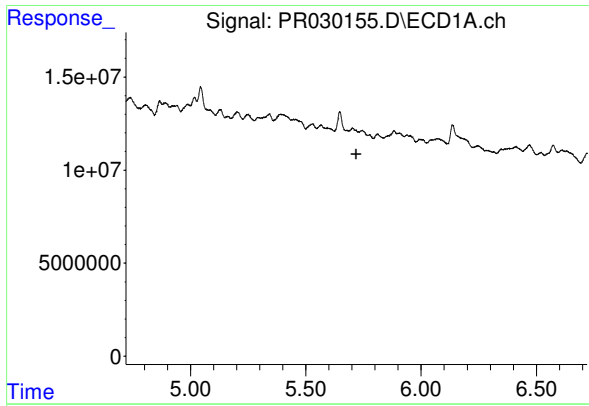
#16 AR-1242-1

R.T.: 0.000 min
 Exp R.T.: 5.454 min
 Response: 0
 Conc: N.D.



#16 AR-1242-1

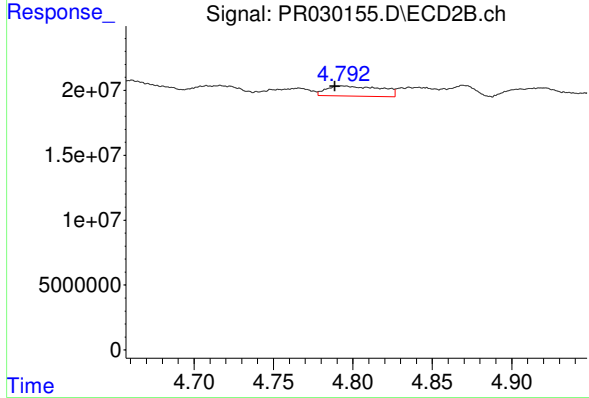
R.T.: 4.565 min
 Delta R.T.: 0.009 min
 Response: 3598743
 Conc: 4.73 ng/ml



#17 AR-1242-2

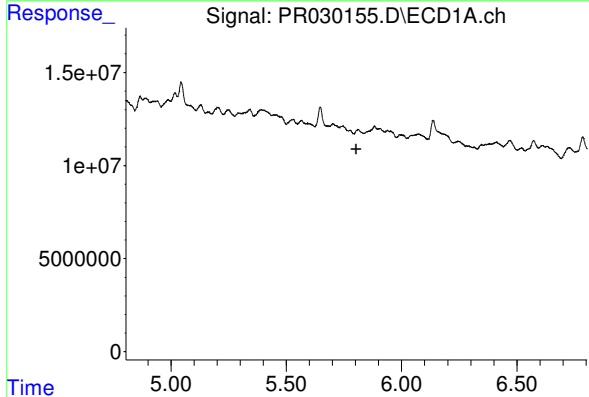
R.T.: 0.000 min
 Exp R.T.: 5.719 min
 Response: 0
 Conc: N.D.

Instrument :
 ECD_R
 ClientSampleId :



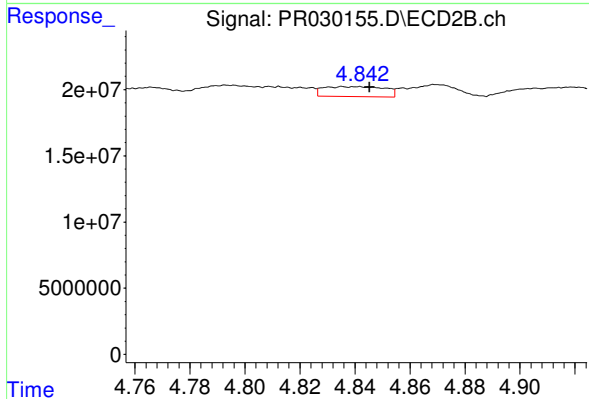
#17 AR-1242-2

R.T.: 4.794 min
 Delta R.T.: 0.006 min
 Response: 18508890
 Conc: 10.43 ng/ml



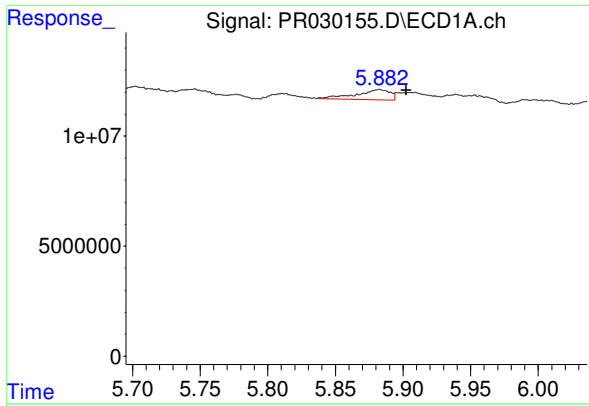
#18 AR-1242-3

R.T.: 0.000 min
 Exp R.T.: 5.804 min
 Response: 0
 Conc: N.D.



#18 AR-1242-3

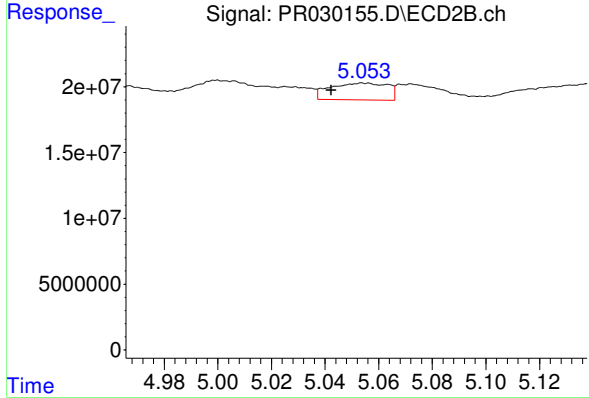
R.T.: 4.836 min
 Delta R.T.: -0.009 min
 Response: 11773254
 Conc: 10.06 ng/ml



#19 AR-1242-4

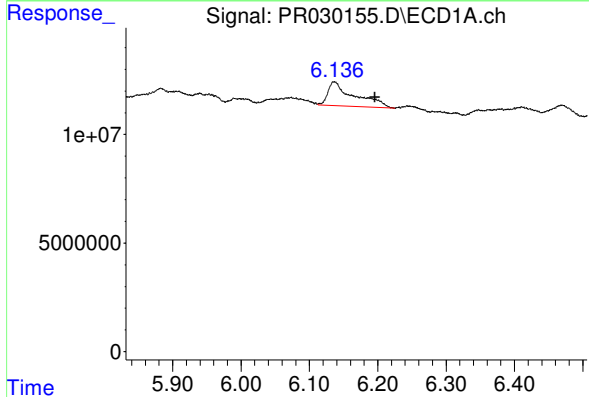
R.T.: 5.882 min
 Delta R.T.: -0.020 min
 Response: 8319490
 Conc: 19.70 ng/ml

Instrument :
 ECD_R
 ClientSampleId :



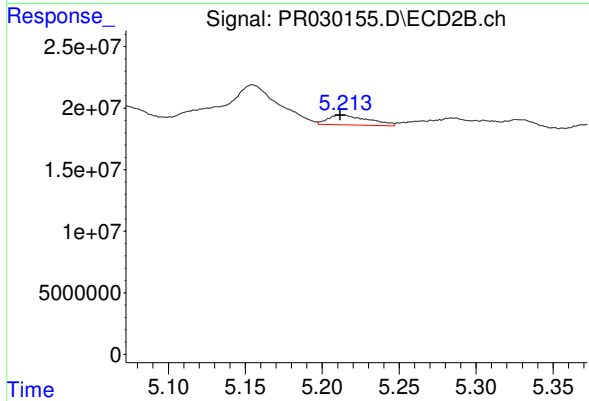
#19 AR-1242-4

R.T.: 5.055 min
 Delta R.T.: 0.012 min
 Response: 19069997
 Conc: 21.22 ng/ml



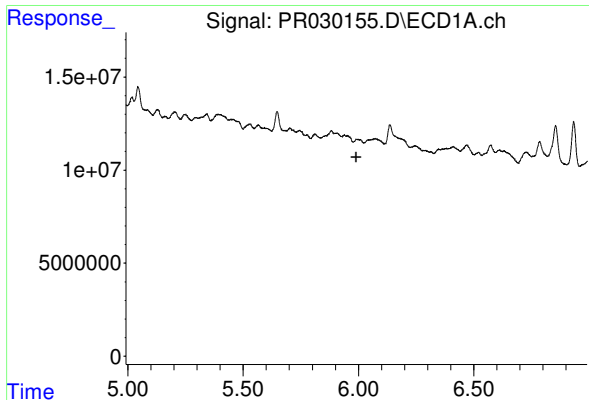
#20 AR-1242-5

R.T.: 6.136 min
 Delta R.T.: -0.060 min
 Response: 29670306
 Conc: 69.89 ng/ml



#20 AR-1242-5

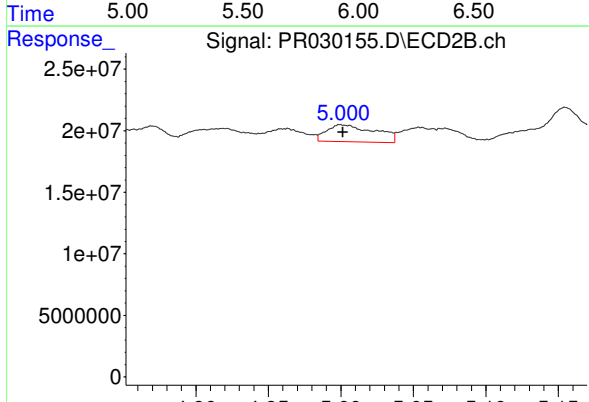
R.T.: 5.213 min
 Delta R.T.: 0.002 min
 Response: 14474085
 Conc: 13.99 ng/ml



#21 AR-1248-1

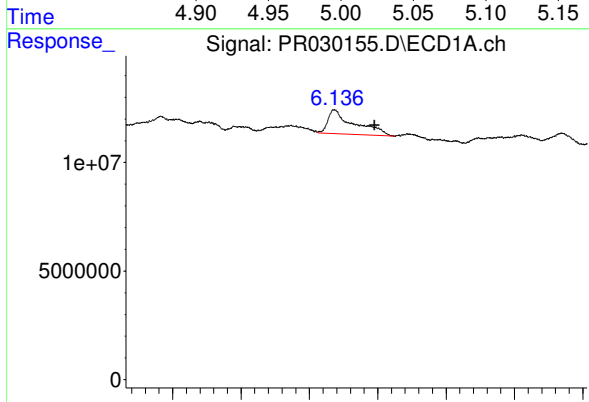
R.T.: 0.000 min
 Exp R.T.: 5.991 min
 Response: 0
 Conc: N.D.

Instrument :
 ECD_R
 ClientSampleId :



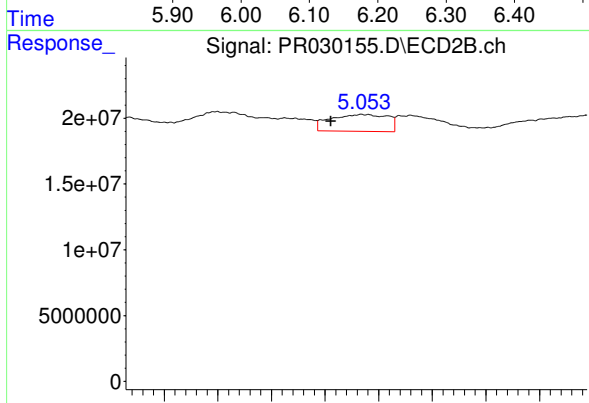
#21 AR-1248-1

R.T.: 5.000 min
 Delta R.T.: -0.002 min
 Response: 32132796
 Conc: 30.06 ng/ml



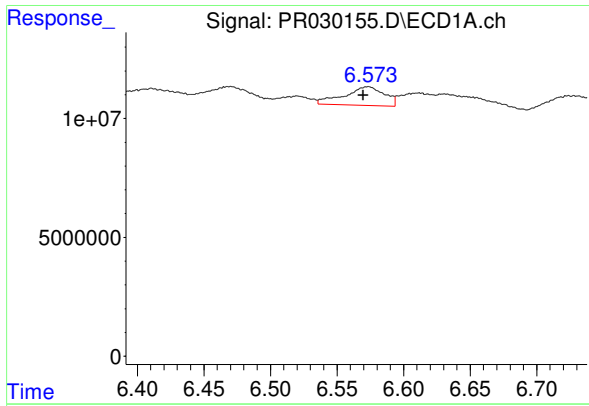
#22 AR-1248-2

R.T.: 6.136 min
 Delta R.T.: -0.059 min
 Response: 29670306
 Conc: 48.49 ng/ml



#22 AR-1248-2

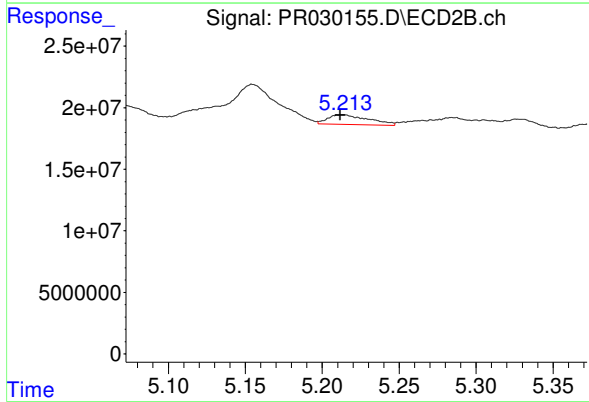
R.T.: 5.055 min
 Delta R.T.: 0.012 min
 Response: 19069997
 Conc: 17.06 ng/ml



#23 AR-1248-3

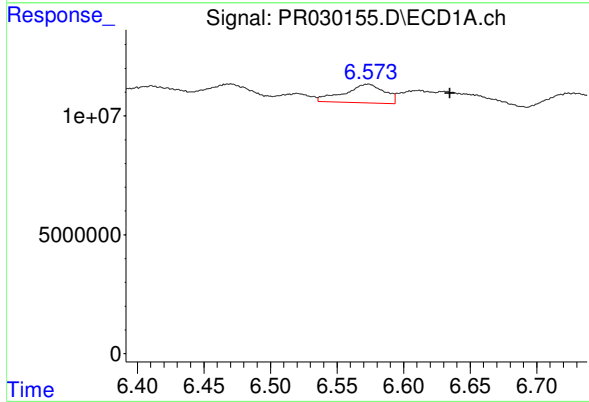
R.T.: 6.573 min
 Delta R.T.: 0.004 min
 Response: 16377421
 Conc: 28.50 ng/ml

Instrument :
 ECD_R
 ClientSampleId :



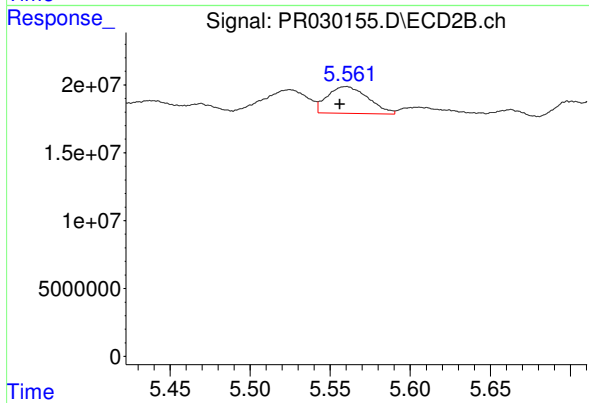
#23 AR-1248-3

R.T.: 5.213 min
 Delta R.T.: 0.002 min
 Response: 14474085
 Conc: 10.32 ng/ml



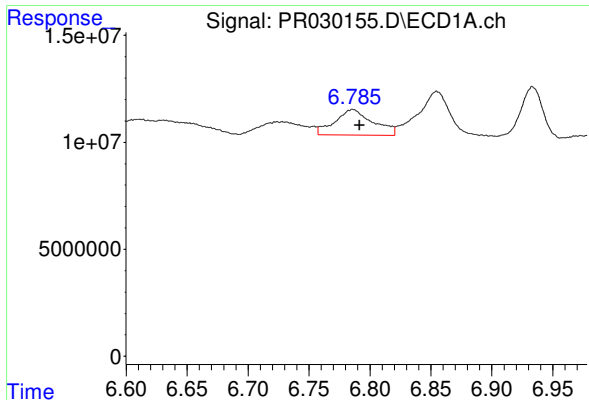
#24 AR-1248-4

R.T.: 6.573 min
 Delta R.T.: -0.061 min
 Response: 16377421
 Conc: 21.98 ng/ml



#24 AR-1248-4

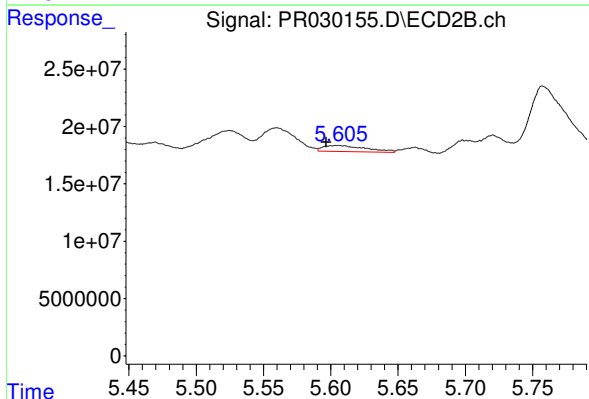
R.T.: 5.560 min
 Delta R.T.: 0.004 min
 Response: 34707020
 Conc: 16.73 ng/ml



#25 AR-1248-5

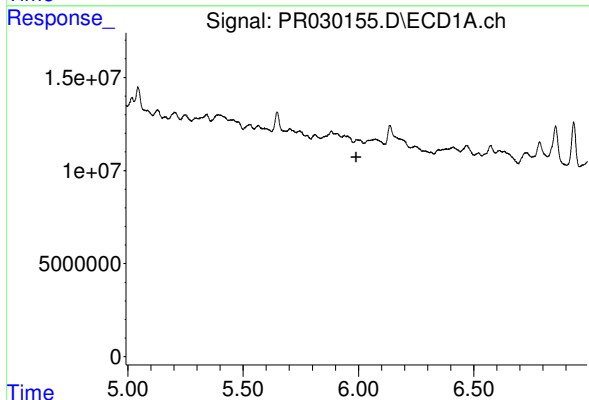
R.T.: 6.786 min
 Delta R.T.: -0.005 min
 Response: 26004438
 Conc: 33.86 ng/ml

Instrument :
 ECD_R
 ClientSampled :



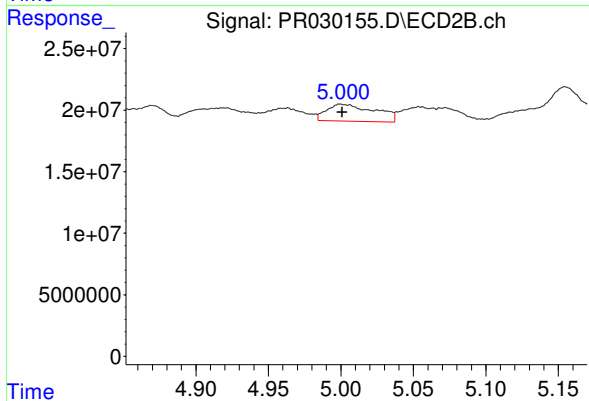
#25 AR-1248-5

R.T.: 5.605 min
 Delta R.T.: 0.008 min
 Response: 11950925
 Conc: 7.91 ng/ml



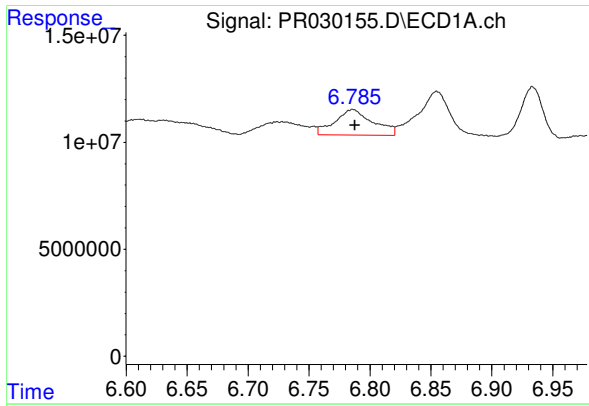
#26 AR-1254-1

R.T.: 0.000 min
 Exp R.T. : 5.991 min
 Response: 0
 Conc: N.D.



#26 AR-1254-1

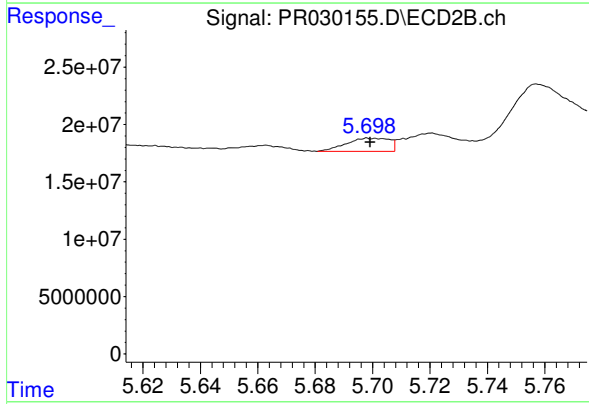
R.T.: 5.000 min
 Delta R.T.: -0.001 min
 Response: 32132796
 Conc: 39.54 ng/ml



#27 AR-1254-2

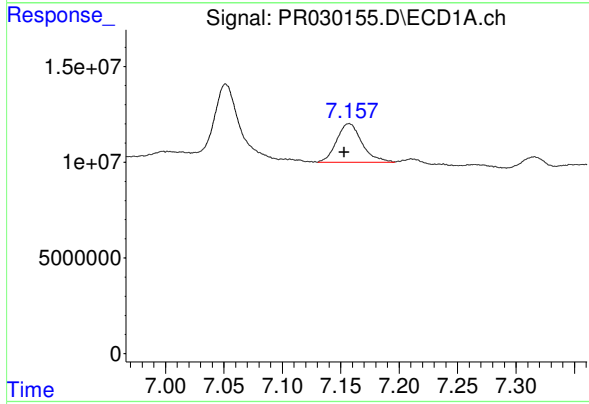
R.T.: 6.786 min
Delta R.T.: -0.002 min
Response: 26004438
Conc: 21.40 ng/ml

Instrument :
ECD_R
ClientSampled :



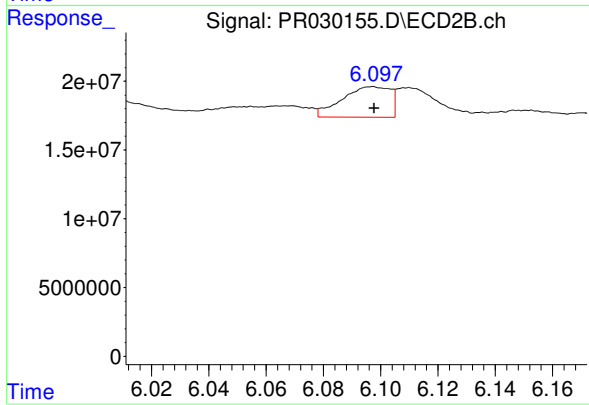
#27 AR-1254-2

R.T.: 5.699 min
Delta R.T.: 0.000 min
Response: 12022642
Conc: 6.05 ng/ml



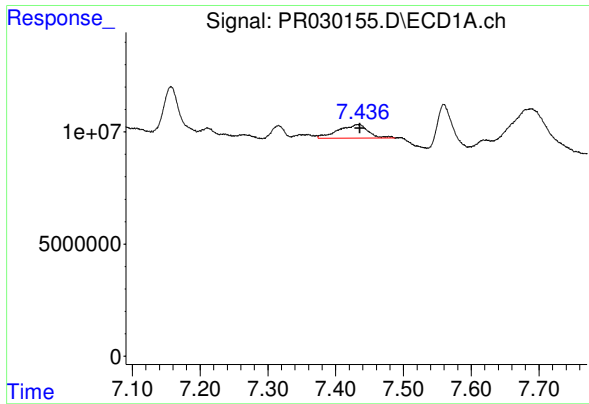
#28 AR-1254-3

R.T.: 7.157 min
Delta R.T.: 0.004 min
Response: 30211430
Conc: 22.24 ng/ml



#28 AR-1254-3

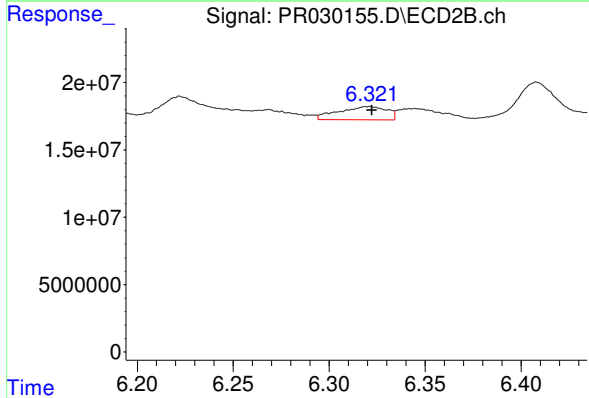
R.T.: 6.097 min
Delta R.T.: 0.000 min
Response: 26074612
Conc: 8.73 ng/ml



#29 AR-1254-4

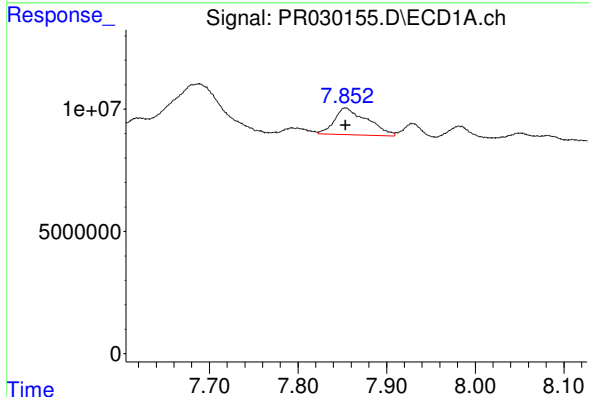
R.T.: 7.435 min
 Delta R.T.: 0.000 min
 Response: 18812909
 Conc: 16.73 ng/ml

Instrument :
 ECD_R
 ClientSampleId :



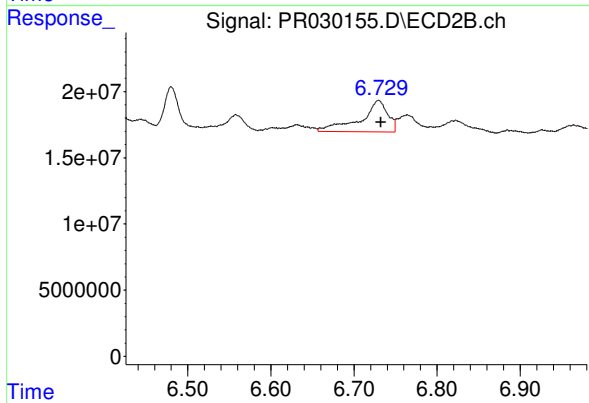
#29 AR-1254-4

R.T.: 6.321 min
 Delta R.T.: -0.002 min
 Response: 17446024
 Conc: 7.45 ng/ml



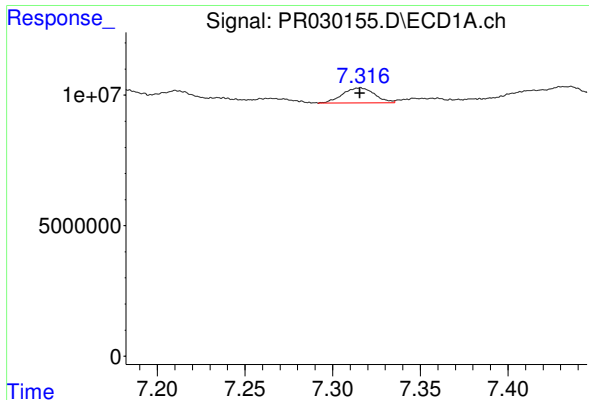
#30 AR-1254-5

R.T.: 7.854 min
 Delta R.T.: 0.000 min
 Response: 28283751
 Conc: 24.92 ng/ml



#30 AR-1254-5

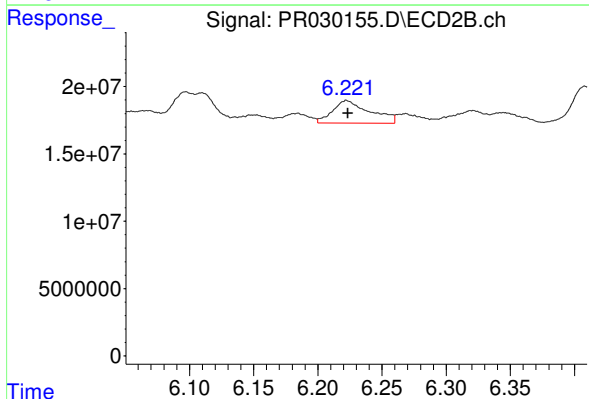
R.T.: 6.730 min
 Delta R.T.: -0.003 min
 Response: 54194829
 Conc: 23.01 ng/ml



#31 AR-1260-1

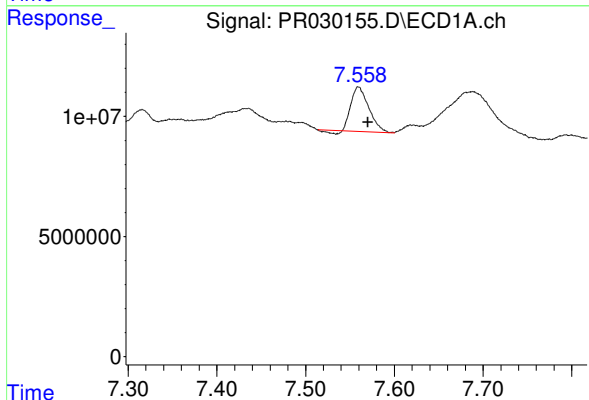
R.T.: 7.316 min
 Delta R.T.: 0.000 min
 Response: 7395251
 Conc: 6.64 ng/ml

Instrument :
 ECD_R
 ClientSampleId :



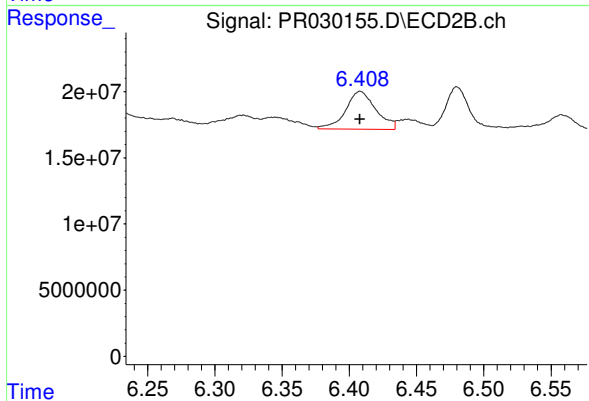
#31 AR-1260-1

R.T.: 6.222 min
 Delta R.T.: 0.000 min
 Response: 33984634
 Conc: 16.40 ng/ml



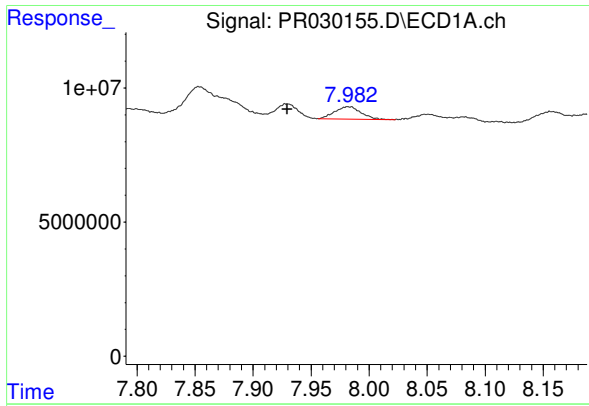
#32 AR-1260-2

R.T.: 7.560 min
 Delta R.T.: -0.011 min
 Response: 25268849
 Conc: 17.50 ng/ml



#32 AR-1260-2

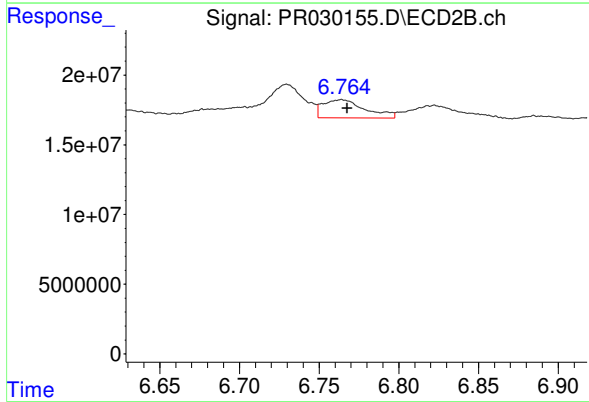
R.T.: 6.408 min
 Delta R.T.: 0.000 min
 Response: 44695324
 Conc: 17.74 ng/ml



#33 AR-1260-3

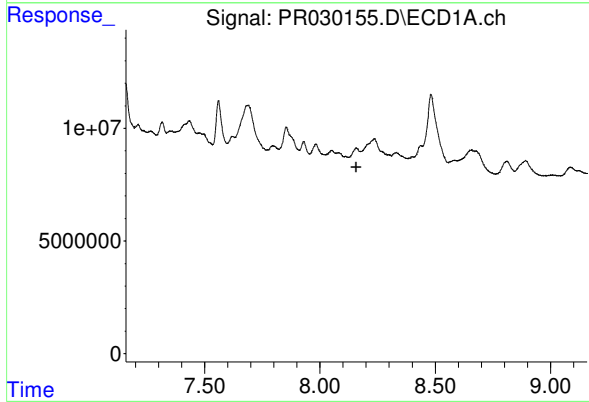
R.T.: 7.982 min
 Delta R.T.: 0.053 min
 Response: 7263984
 Conc: 6.35 ng/ml

Instrument :
 ECD_R
 ClientSampleId :



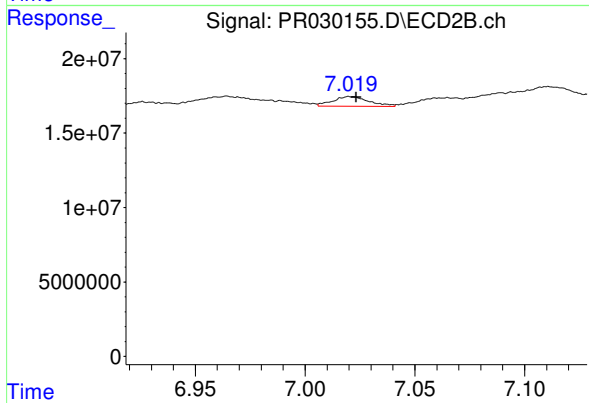
#33 AR-1260-3

R.T.: 6.764 min
 Delta R.T.: -0.003 min
 Response: 23973160
 Conc: 12.81 ng/ml



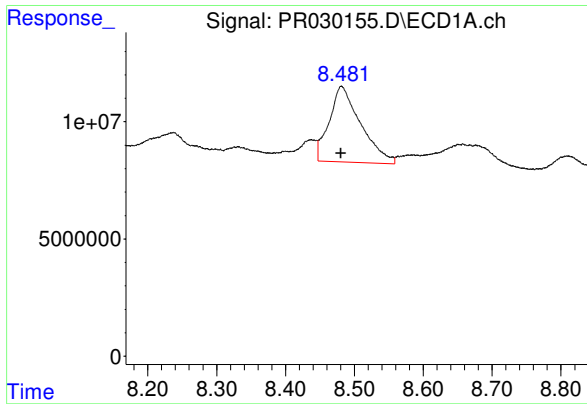
#34 AR-1260-4

R.T.: 0.000 min
 Exp R.T. : 8.158 min
 Response: 0
 Conc: N.D.



#34 AR-1260-4

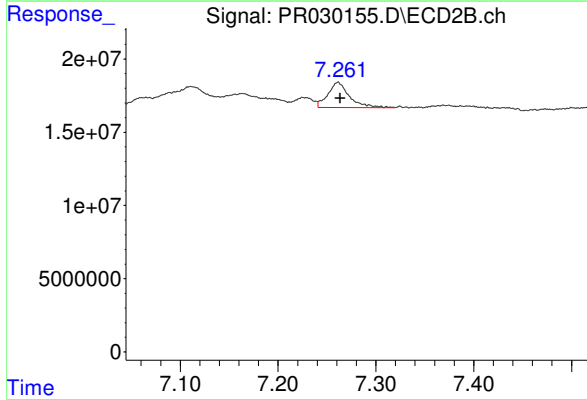
R.T.: 7.021 min
 Delta R.T.: -0.002 min
 Response: 7607720
 Conc: 5.25 ng/ml



#35 AR-1260-5

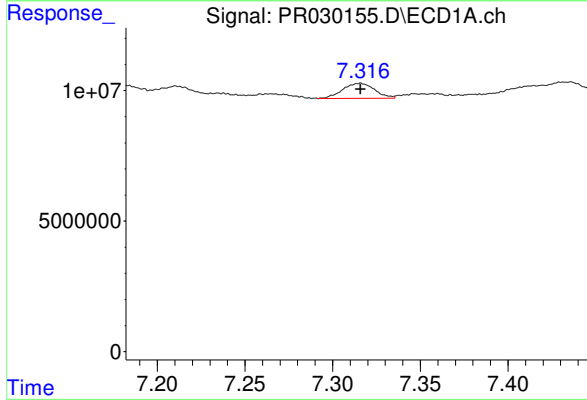
R.T.: 8.481 min
 Delta R.T.: 0.000 min
 Response: 102544720
 Conc: 38.82 ng/ml

Instrument :
 ECD_R
 ClientSampled :



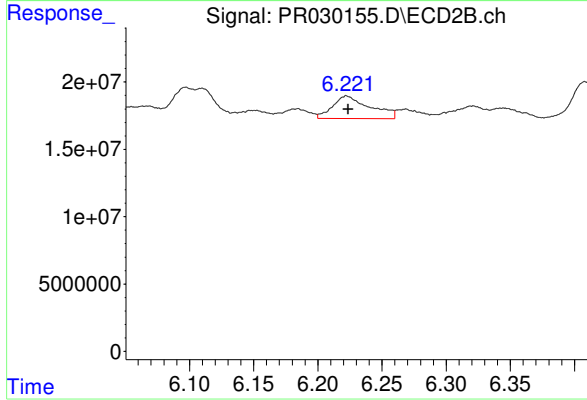
#35 AR-1260-5

R.T.: 7.261 min
 Delta R.T.: -0.002 min
 Response: 26202606
 Conc: 7.97 ng/ml



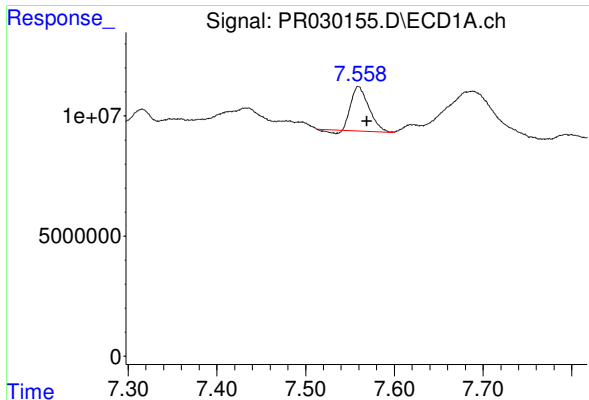
#36 AR-1262-1

R.T.: 7.316 min
 Delta R.T.: 0.000 min
 Response: 7395251
 Conc: 8.42 ng/ml



#36 AR-1262-1

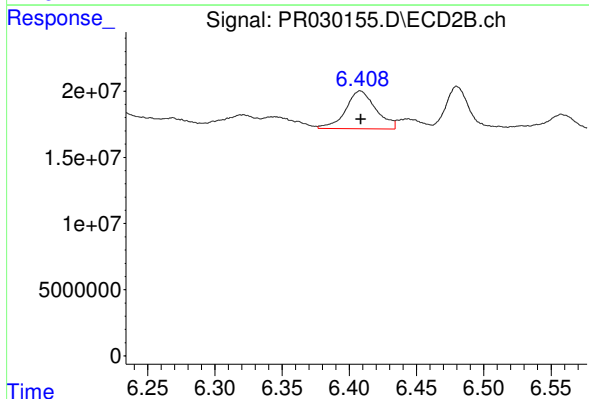
R.T.: 6.222 min
 Delta R.T.: -0.001 min
 Response: 33984634
 Conc: 19.63 ng/ml



#37 AR-1262-2

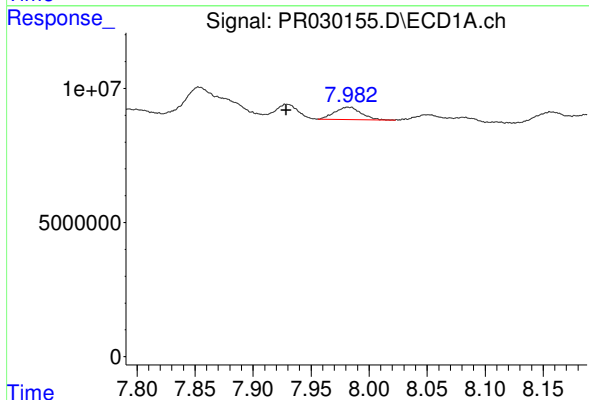
R.T.: 7.560 min
 Delta R.T.: -0.009 min
 Response: 25268849
 Conc: 22.25 ng/ml

Instrument :
 ECD_R
 ClientSampleId :



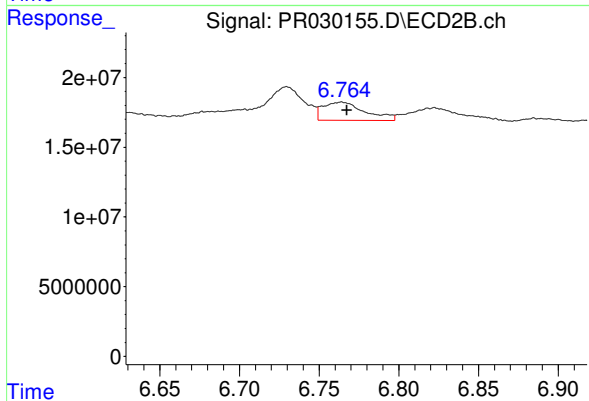
#37 AR-1262-2

R.T.: 6.408 min
 Delta R.T.: 0.000 min
 Response: 44695324
 Conc: 20.92 ng/ml



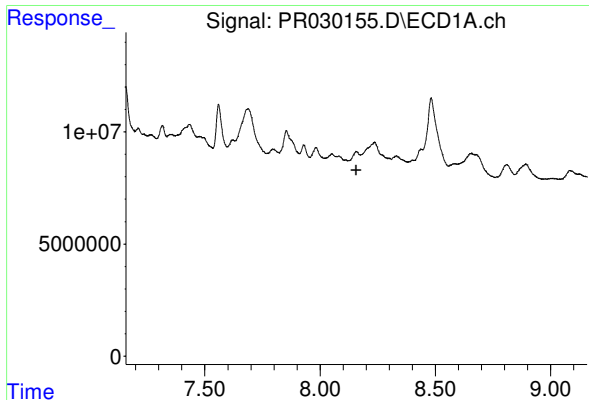
#38 AR-1262-3

R.T.: 7.982 min
 Delta R.T.: 0.053 min
 Response: 7263984
 Conc: 4.57 ng/ml



#38 AR-1262-3

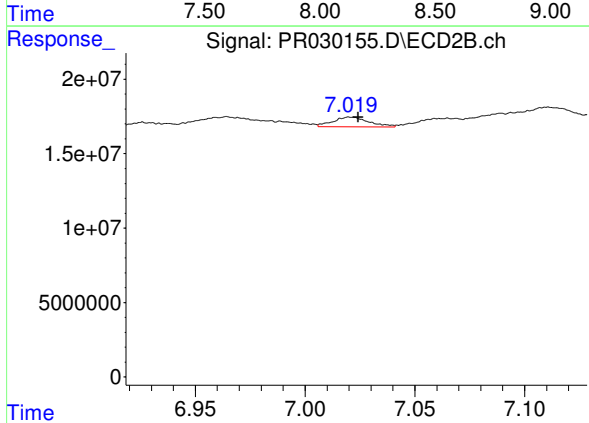
R.T.: 6.764 min
 Delta R.T.: -0.003 min
 Response: 23973160
 Conc: 9.57 ng/ml



#39 AR-1262-4

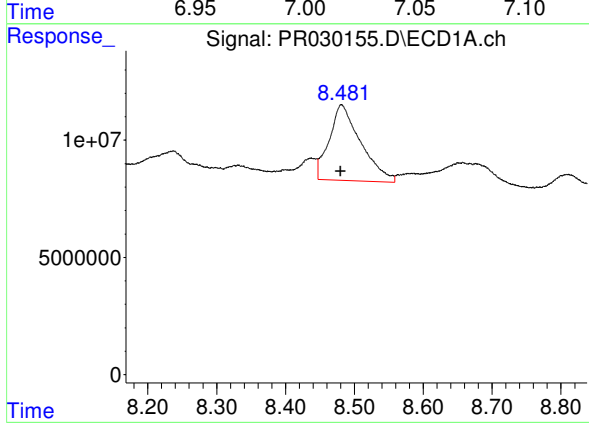
R.T.: 0.000 min
 Exp R.T.: 8.157 min
 Response: 0
 Conc: N.D.

Instrument :
 ECD_R
 ClientSampleId :



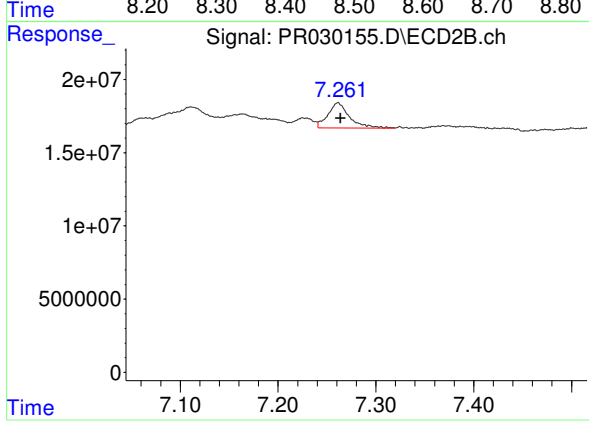
#39 AR-1262-4

R.T.: 7.021 min
 Delta R.T.: -0.003 min
 Response: 7607720
 Conc: 3.92 ng/ml



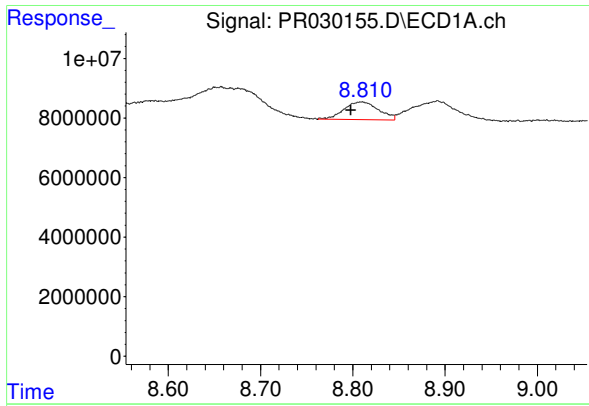
#40 AR-1262-5

R.T.: 8.481 min
 Delta R.T.: 0.000 min
 Response: 102544720
 Conc: 34.96 ng/ml



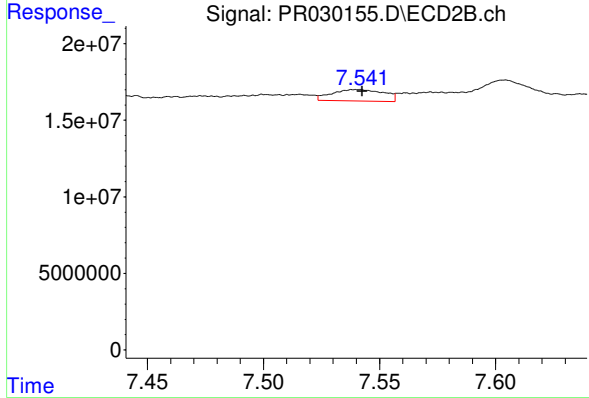
#40 AR-1262-5

R.T.: 7.261 min
 Delta R.T.: -0.003 min
 Response: 26202606
 Conc: 7.21 ng/ml

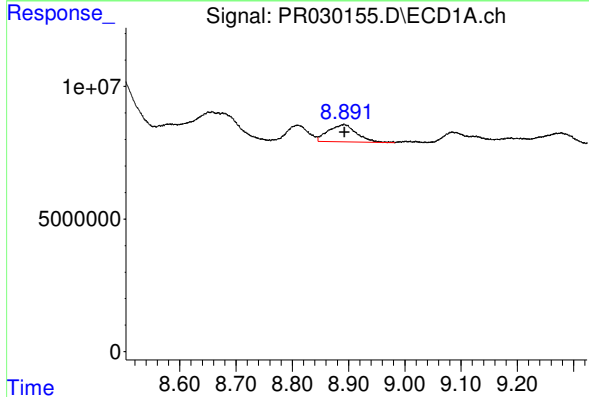


#41 AR-1268-1
 R.T.: 8.810 min
 Delta R.T.: 0.012 min
 Response: 15541510
 Conc: 4.76 ng/ml

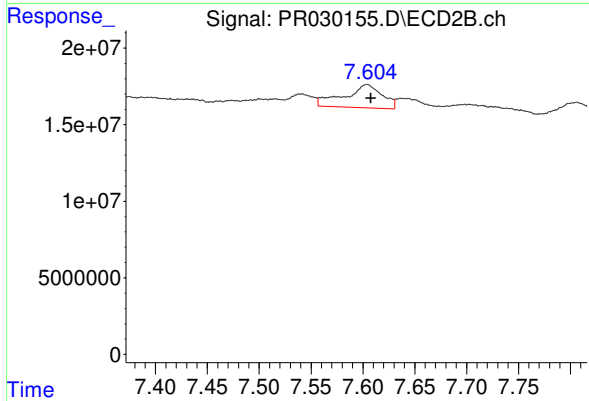
Instrument :
 ECD_R
 ClientSampleId :



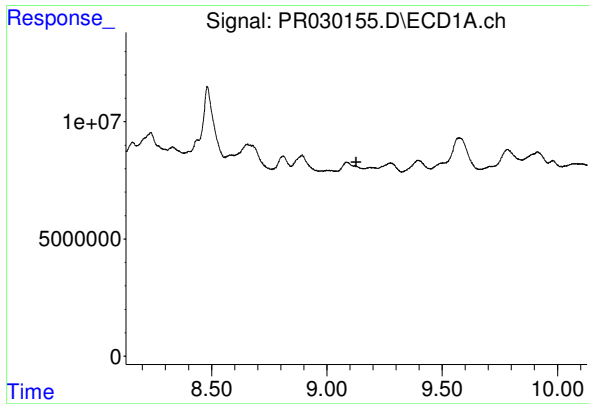
#41 AR-1268-1
 R.T.: 7.540 min
 Delta R.T.: -0.002 min
 Response: 11737280
 Conc: 3.69 ng/ml



#42 AR-1268-2
 R.T.: 8.892 min
 Delta R.T.: 0.000 min
 Response: 22466665
 Conc: 7.53 ng/ml



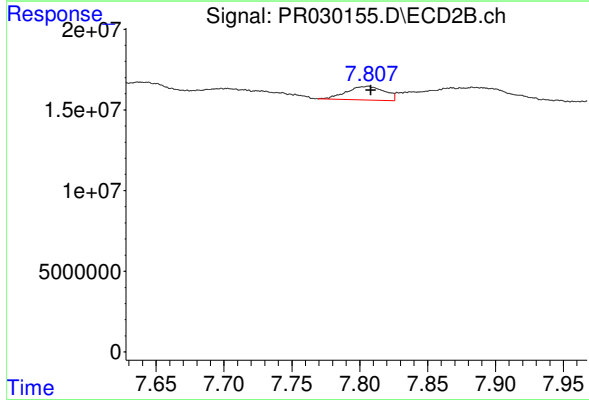
#42 AR-1268-2
 R.T.: 7.604 min
 Delta R.T.: -0.004 min
 Response: 38824439
 Conc: 13.37 ng/ml



#43 AR-1268-3

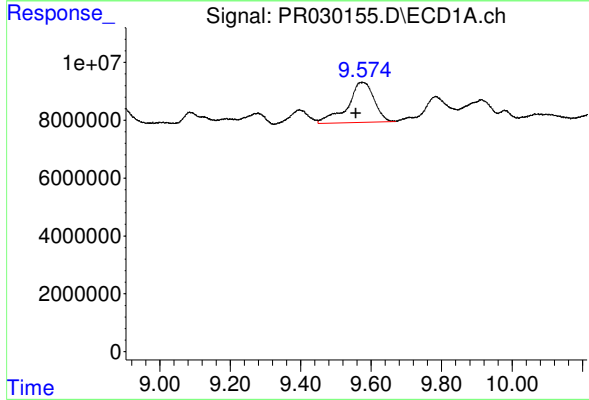
R.T.: 0.000 min
 Exp R.T.: 9.128 min
 Response: 0
 Conc: N.D.

Instrument :
 ECD_R
 ClientSampleId :



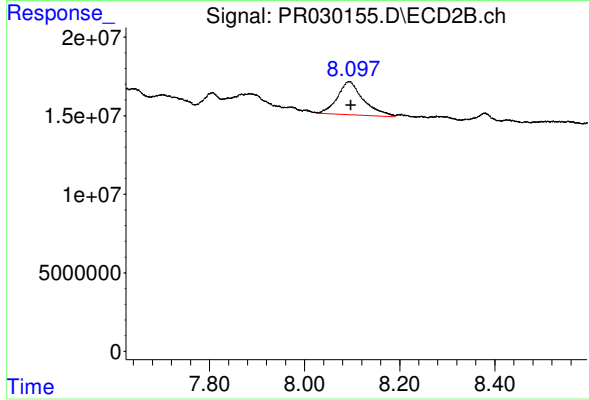
#43 AR-1268-3

R.T.: 7.806 min
 Delta R.T.: -0.002 min
 Response: 16387913
 Conc: 7.00 ng/ml



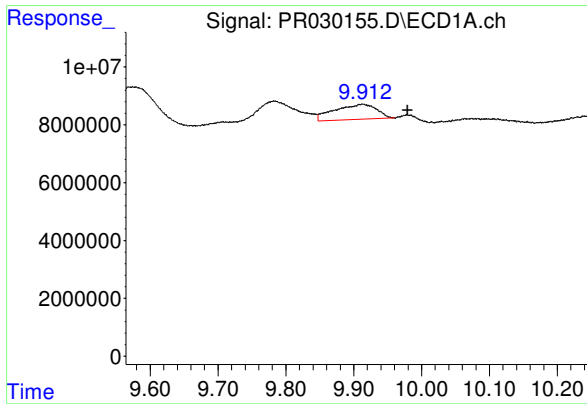
#44 AR-1268-4

R.T.: 9.574 min
 Delta R.T.: 0.018 min
 Response: 72653855
 Conc: 63.67 ng/ml



#44 AR-1268-4

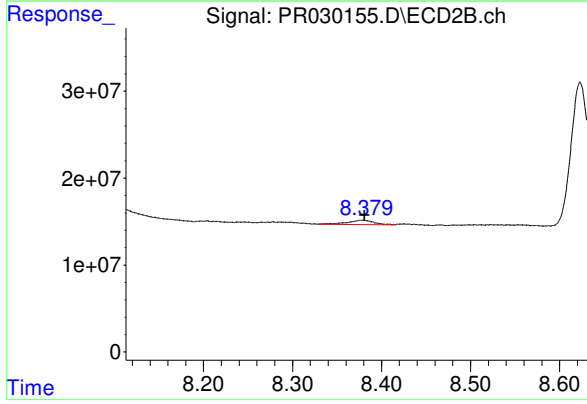
R.T.: 8.095 min
 Delta R.T.: -0.002 min
 Response: 80142076
 Conc: 72.19 ng/ml



#45 AR-1268-5

R.T.: 9.913 min
Delta R.T.: -0.066 min
Response: 22684539
Conc: 2.71 ng/ml

Instrument :
ECD_R
ClientSampleId :



#45 AR-1268-5

R.T.: 8.379 min
Delta R.T.: -0.002 min
Response: 9864309
Conc: 1.57 ng/ml