

Data Path : Z:\pestpcbsrv\HPCHEM1\ECD_R\Data\PR071118\
 Data File : PR030138.D
 Signal(s) : Signal #1: ECD1A.ch Signal #2: ECD2B.ch
 Acq On : 10 Jul 2018 10:07
 Operator : MA/SM
 Sample : HEXANE
 Misc :
 ALS Vial : 1 Sample Multiplier: 1

Instrument :
 ECD_R
 ClientSampleId :
 HEXANE

Integration File signal 1: autoint1.e
 Integration File signal 2: autoint2.e
 Quant Time: Jul 10 14:28:01 2018
 Quant Method : \\TERASTORAGE\Terastorage\pestpcbsrv\HPCHEM1\ECD_R\Method\PR071018.M
 Quant Title : GC EXTRACTABLES
 QLast Update : Tue Jul 10 01:27:38 2018
 Response via : Initial Calibration
 Integrator: ChemStation

Volume Inj. : 2 µl
 Signal #1 Phase : ZB-MR1 Signal #2 Phase: ZB-MR2
 Signal #1 Info : 30Mx0.32mmx 0.50µ Signal #2 Info : 30M x 0.32mm x 0.25µm

Compound	RT#1	RT#2	Resp#1	Resp#2	ng/ml	ng/ml
----------	------	------	--------	--------	-------	-------

 System Monitoring Compounds

Target Compounds

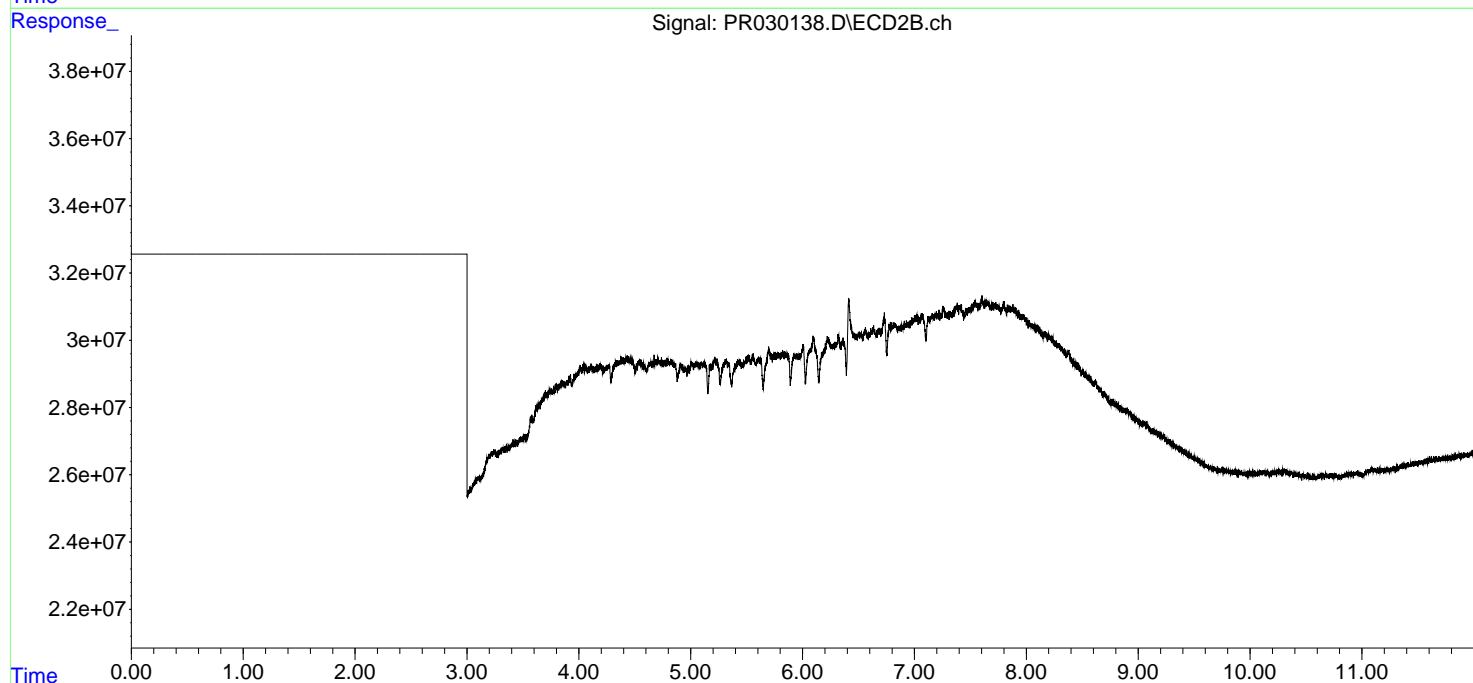
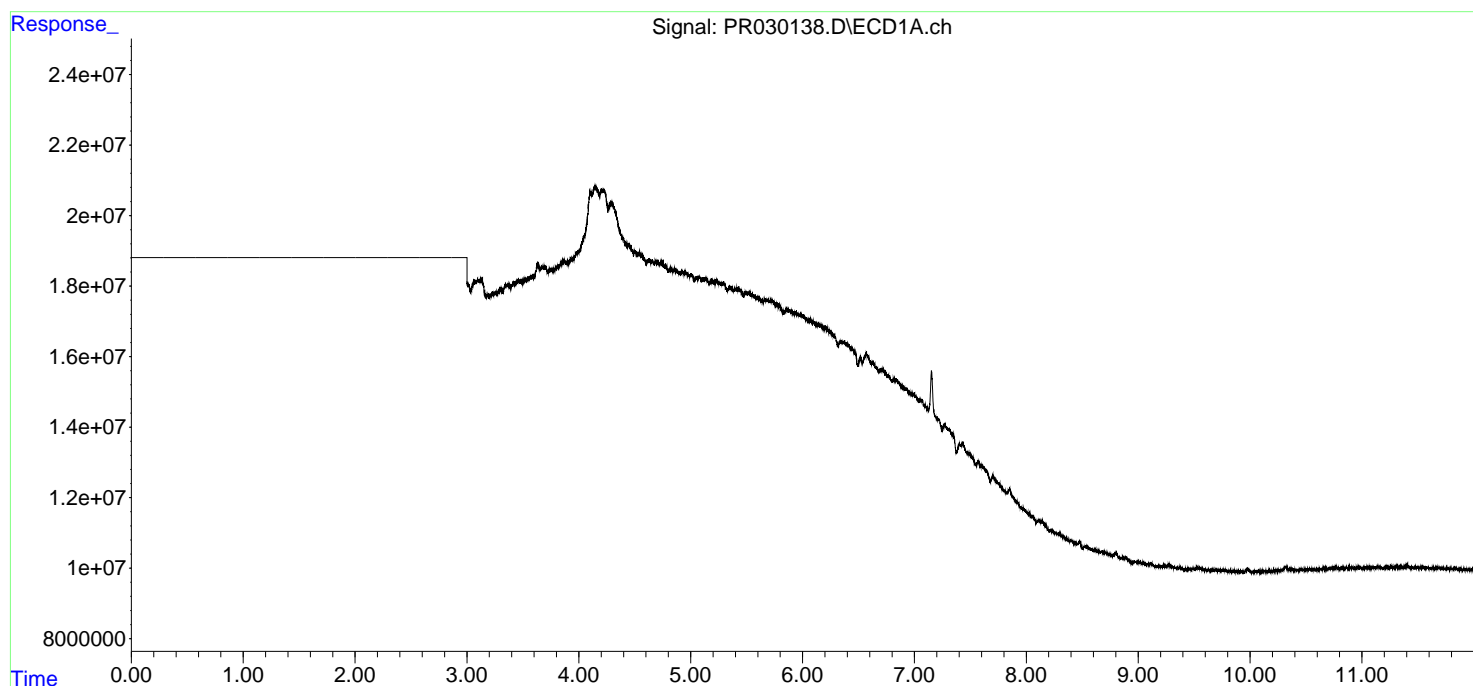
(f)=RT Delta > 1/2 Window (#)=Amounts differ by > 25% (m)=manual int.

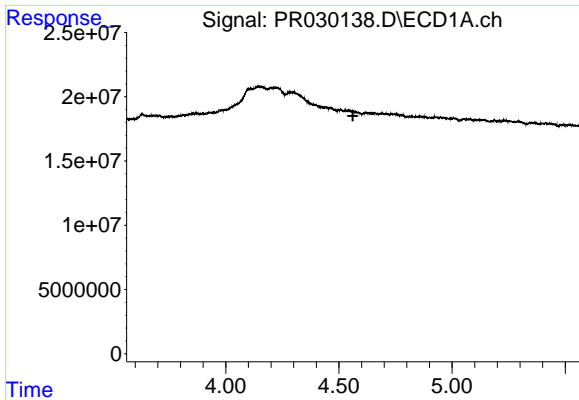
Data Path : Z:\pestpcbsrv\HPCHEM1\ECD_R\Data\PR071118\
Data File : PR030138.D
Signal(s) : Signal #1: ECD1A.ch Signal #2: ECD2B.ch
Acq On : 10 Jul 2018 10:07
Operator : MA/SM
Sample : HEXANE
Misc :
ALS Vial : 1 Sample Multiplier: 1

Instrument :
ECD_R
ClientSampleId :
HEXANE

Integration File signal 1: autoint1.e
Integration File signal 2: autoint2.e
Quant Time: Jul 10 14:28:01 2018
Quant Method : \\TERASTORAGE\Terastorage\pestpcbsrv\HPCHEM1\ECD_R\Method\PR071018.M
Quant Title : GC EXTRACTABLES
QLast Update : Tue Jul 10 01:27:38 2018
Response via : Initial Calibration
Integrator: ChemStation

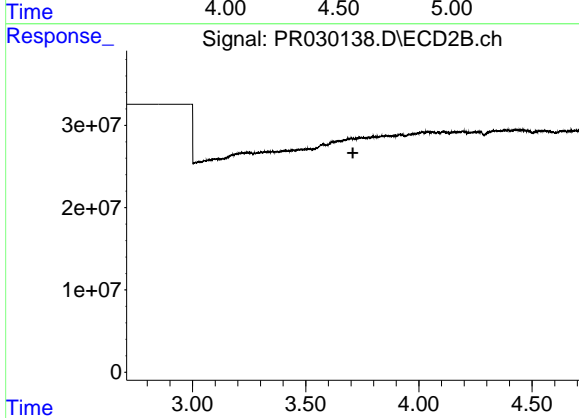
Volume Inj. : 2 μ l
Signal #1 Phase : ZB-MR1 Signal #2 Phase: ZB-MR2
Signal #1 Info : 30Mx0.32mmx 0.50 μ Signal #2 Info : 30M x 0.32mm x 0.25 μ m



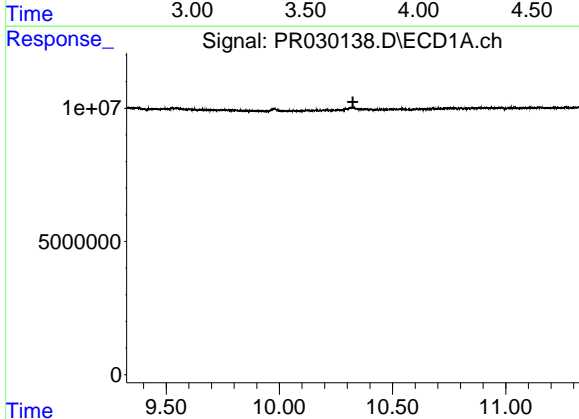


#1 Tetrachloro-m-xylene
 R.T.: 0.000 min
 Exp R.T. : 4.562 min
 Response: 0
 Conc: N.D.

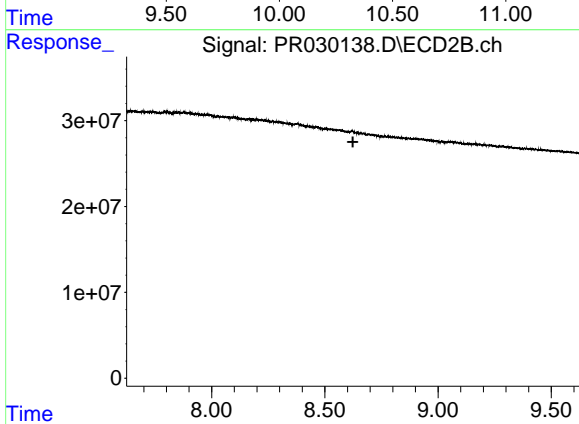
Instrument :
 ECD_R
 ClientSampled :
 HEXANE



#1 Tetrachloro-m-xylene
 R.T.: 0.000 min
 Exp R.T. : 3.708 min
 Response: 0
 Conc: N.D.



#2 Decachlorobiphenyl
 R.T.: 0.000 min
 Exp R.T. : 10.325 min
 Response: 0
 Conc: N.D.



#2 Decachlorobiphenyl
 R.T.: 0.000 min
 Exp R.T. : 8.624 min
 Response: 0
 Conc: N.D.