

Data Path : Z:\pestpcbsrv\HPCHEM1\ECD\_R\Data\PR071218\  
 Data File : PR030200.D  
 Signal(s) : Signal #1: ECD1A.ch Signal #2: ECD2B.ch  
 Acq On : 11 Jul 2018 15:54  
 Operator : MA/SM  
 Sample : AR1660CCC500  
 Misc :  
 ALS Vial : 3 Sample Multiplier: 1

Instrument :  
 ECD\_R  
 ClientSampleId :  
 AR1660CCC500

Manual Integrations  
 APPROVED

Sohil  
 7/12/2018 7:22:53 PM

Integration File signal 1: autoint1.e  
 Integration File signal 2: autoint2.e  
 Quant Time: Jul 11 16:09:22 2018  
 Quant Method : \\TERASTORAGE\Terastorage\pestpcbsrv\HPCHEM1\ECD\_R\Method\PR071018.M  
 Quant Title : GC EXTRACTABLES  
 QLast Update : Tue Jul 10 01:27:38 2018  
 Response via : Initial Calibration  
 Integrator: ChemStation

Volume Inj. : 2 µl  
 Signal #1 Phase : ZB-MR1 Signal #2 Phase: ZB-MR2  
 Signal #1 Info : 30Mx0.32mmx 0.50µ Signal #2 Info : 30M x 0.32mm x 0.25µm

Compound	RT#1	RT#2	Resp#1	Resp#2	ng/ml	ng/ml
-----						
System Monitoring Compounds						
1) SA Tetrachlo...	4.563	3.705	1003.9E6	1519.7E6	63.941	57.303m
2) SA Decachlor...	10.333	8.623	1279.6E6	867.0E6	44.366	38.447
Target Compounds						
3) L1 AR-1016-1	5.456	4.554	244.5E6	504.9E6	610.326	563.126
4) L1 AR-1016-2	5.806	4.961	313.7E6	503.5E6	548.661	511.206
5) L1 AR-1016-3	5.905	5.041	269.8E6	547.7E6	562.126	555.293
6) L1 AR-1016-4	6.198	5.211	273.7E6	628.9E6	565.326	547.044
7) L1 AR-1016-5	6.339	5.555	270.1E6	609.5E6	502.535	530.056
31) L7 AR-1260-1	7.319	6.222	489.1E6	1068.2E6	438.963	515.571
32) L7 AR-1260-2	7.573	6.407	664.0E6	1300.4E6	459.921	516.174
33) L7 AR-1260-3	7.932	6.766	518.9E6	1011.9E6	453.573	540.526
34) L7 AR-1260-4	8.161	7.023	516.8E6	758.4E6	448.584	523.076
35) L7 AR-1260-5	8.484	7.263	1213.2E6	1687.5E6	459.226	513.442

(f)=RT Delta > 1/2 Window (#)=Amounts differ by > 25% (m)=manual int.

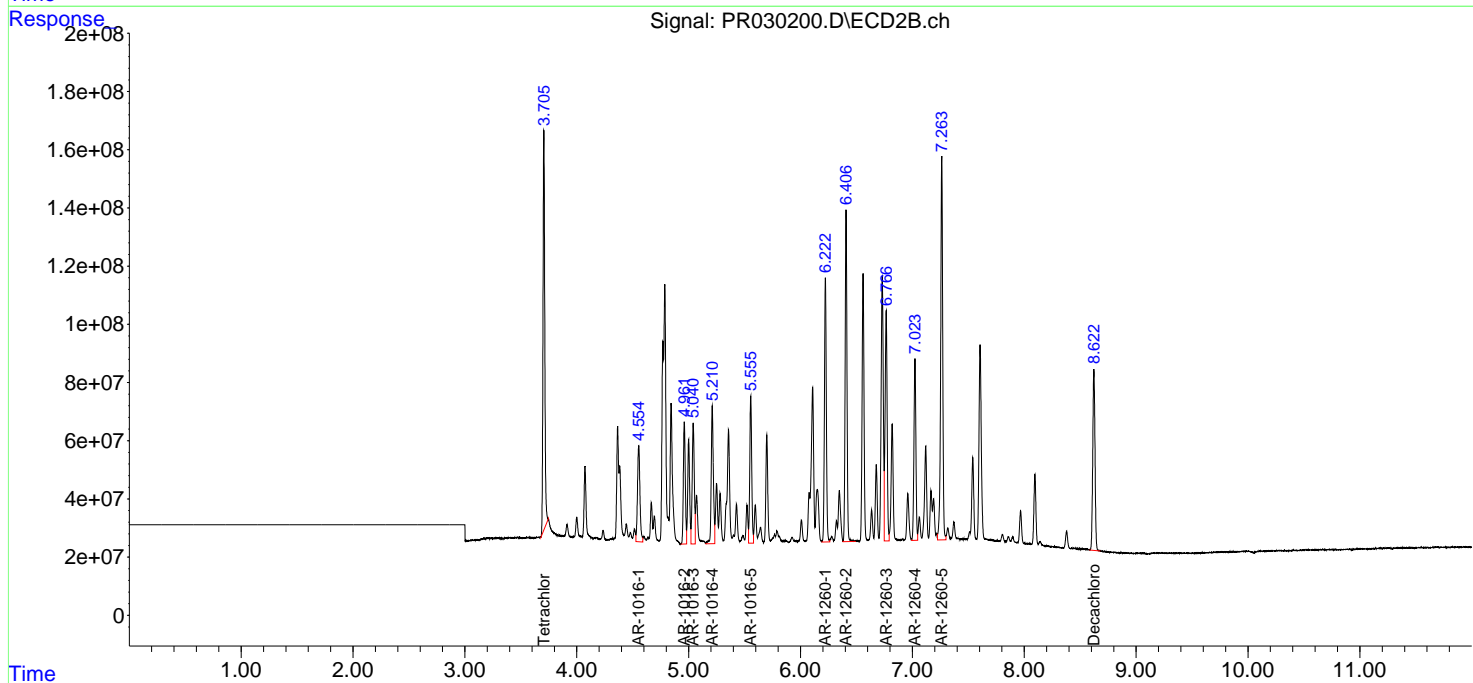
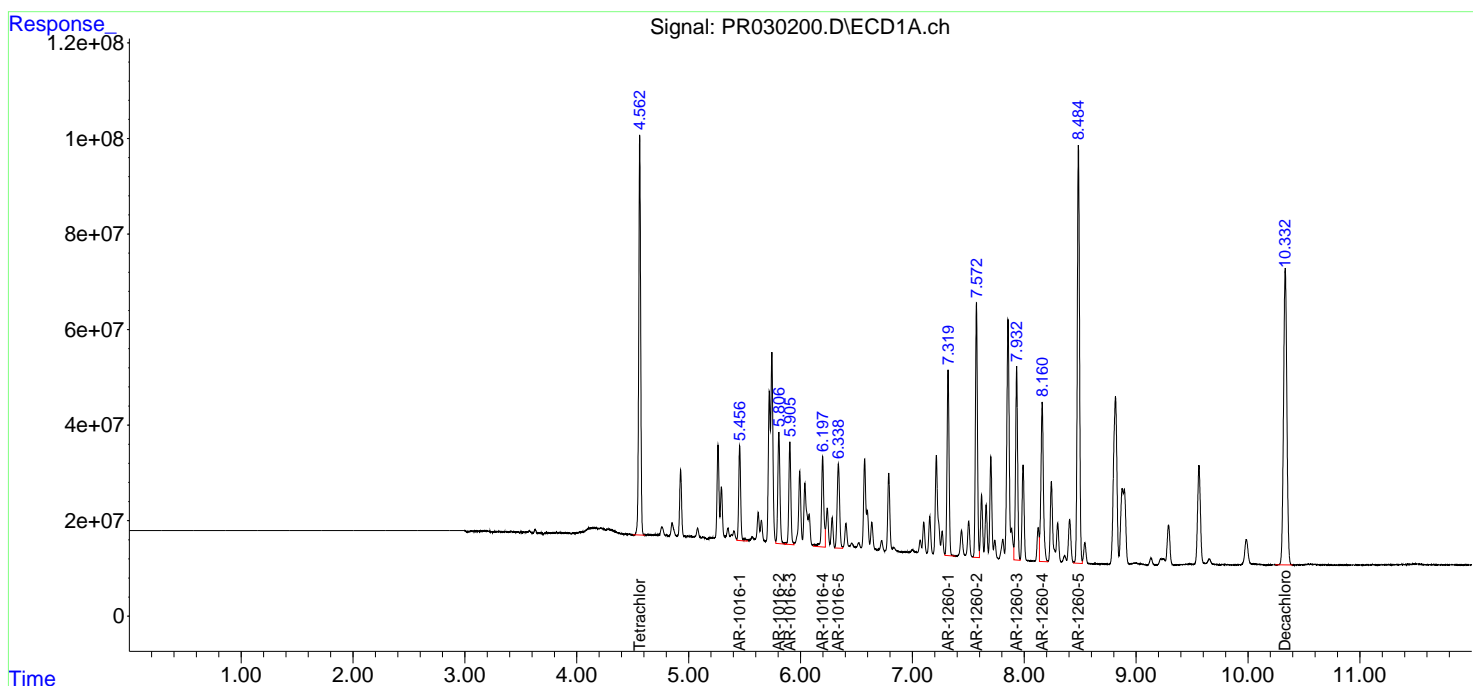
Data Path : Z:\pestpcbsrv\HPCHEM1\ECD\_R\Data\PR071218\  
 Data File : PR030200.D  
 Signal(s) : Signal #1: ECD1A.ch Signal #2: ECD2B.ch  
 Acq On : 11 Jul 2018 15:54  
 Operator : MA/SM  
 Sample : AR1660CCC500  
 Misc :  
 ALS Vial : 3 Sample Multiplier: 1

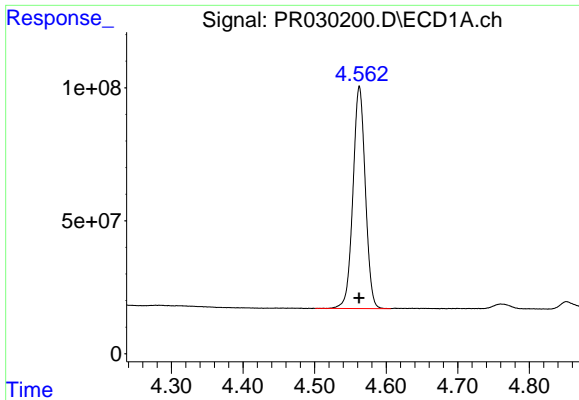
**Instrument :**  
 ECD\_R  
**Client Sampled :**  
 AR1660CCC500

**Manual Integrations**  
**APPROVED**  
 Sohil  
 7/12/2018 7:22:53 PM

Integration File signal 1: autoint1.e  
 Integration File signal 2: autoint2.e  
 Quant Time: Jul 11 16:09:22 2018  
 Quant Method : \\TERASTORAGE\Terastorage\pestpcbsrv\HPCHEM1\ECD\_R\Method\PR071018.M  
 Quant Title : GC EXTRACTABLES  
 QLast Update : Tue Jul 10 01:27:38 2018  
 Response via : Initial Calibration  
 Integrator: ChemStation

Volume Inj. : 2 µl  
 Signal #1 Phase : ZB-MR1 Signal #2 Phase: ZB-MR2  
 Signal #1 Info : 30Mx0.32mmx 0.50µ Signal #2 Info : 30M x 0.32mm x 0.25µm

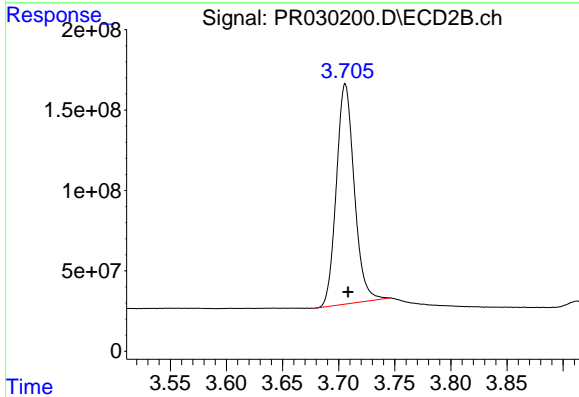




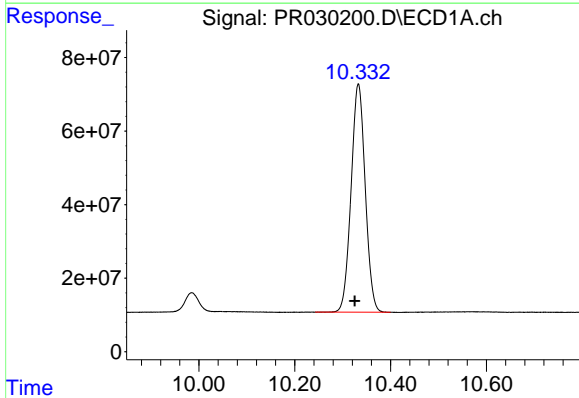
#1 Tetrachloro-m-xylene  
 R.T.: 4.563 min  
 Delta R.T.: 0.000 min  
 Response: 1003922444  
 Conc: 63.94 ng/ml

Instrument :  
 ECD\_R  
 ClientSampleId :  
 AR1660CCC500

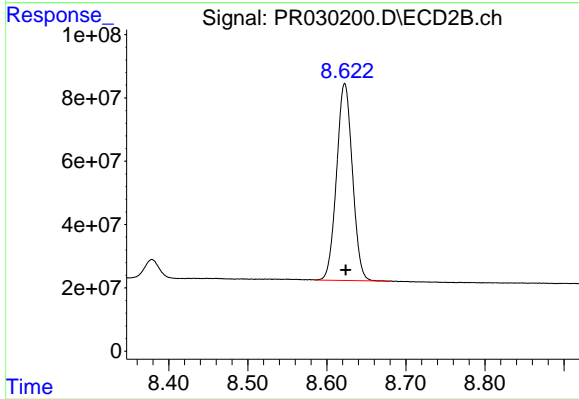
Manual Integrations  
 APPROVED  
 Sohil  
 7/12/2018 7:22:53 PM



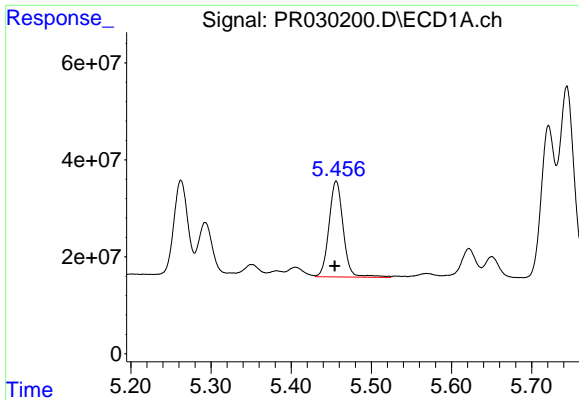
#1 Tetrachloro-m-xylene  
 R.T.: 3.705 min  
 Delta R.T.: -0.003 min  
 Response: 1519724788  
 Conc: 57.30 ng/ml m



#2 Decachlorobiphenyl  
 R.T.: 10.333 min  
 Delta R.T.: 0.008 min  
 Response: 1279600735  
 Conc: 44.37 ng/ml



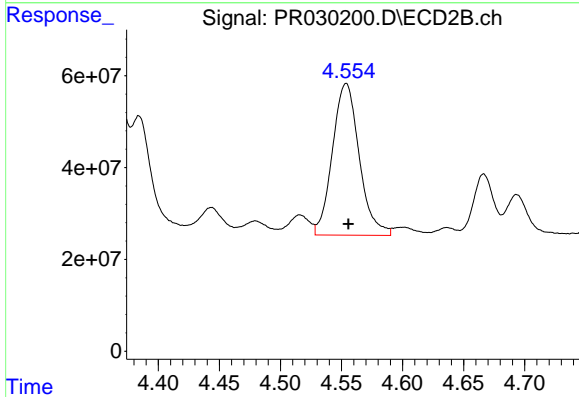
#2 Decachlorobiphenyl  
 R.T.: 8.623 min  
 Delta R.T.: -0.001 min  
 Response: 867000940  
 Conc: 38.45 ng/ml



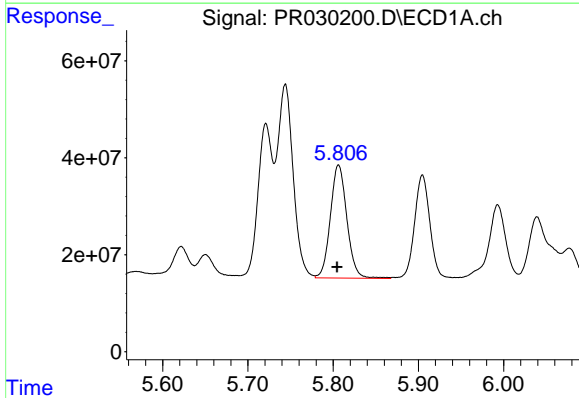
#3 AR-1016-1  
 R.T.: 5.456 min  
 Delta R.T.: 0.002 min  
 Response: 244482216  
 Conc: 610.33 ng/ml

**Instrument :**  
 ECD\_R  
**ClientSampled :**  
 AR1660CCC500

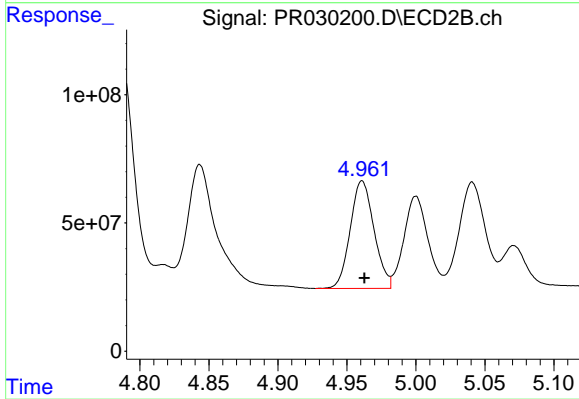
**Manual Integrations**  
**APPROVED**  
 Sohil  
 7/12/2018 7:22:53 PM



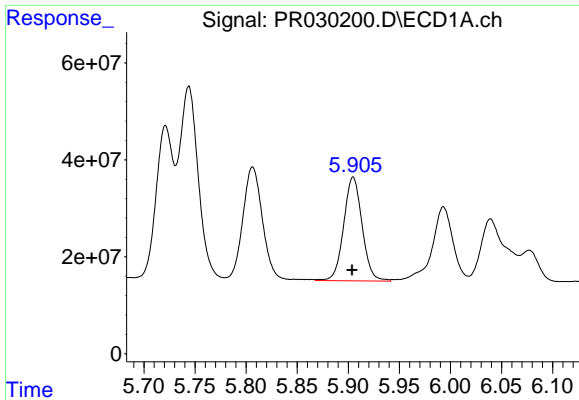
#3 AR-1016-1  
 R.T.: 4.554 min  
 Delta R.T.: -0.002 min  
 Response: 504904818  
 Conc: 563.13 ng/ml



#4 AR-1016-2  
 R.T.: 5.806 min  
 Delta R.T.: 0.002 min  
 Response: 313745166  
 Conc: 548.66 ng/ml



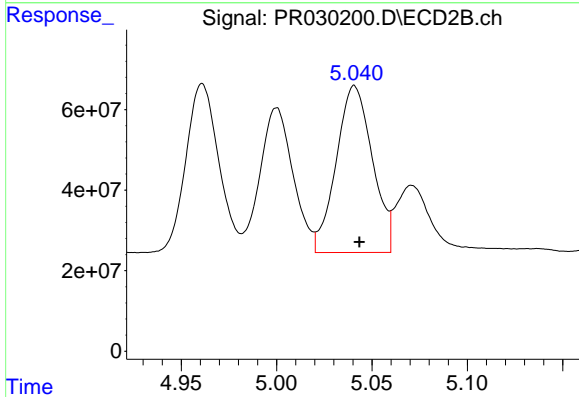
#4 AR-1016-2  
 R.T.: 4.961 min  
 Delta R.T.: -0.002 min  
 Response: 503488728  
 Conc: 511.21 ng/ml



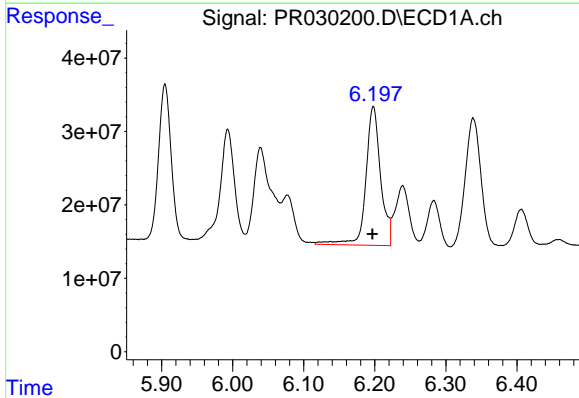
#5 AR-1016-3  
 R.T.: 5.905 min  
 Delta R.T.: 0.000 min  
 Response: 269765859  
 Conc: 562.13 ng/ml

**Instrument :**  
 ECD\_R  
**ClientSampled :**  
 AR1660CCC500

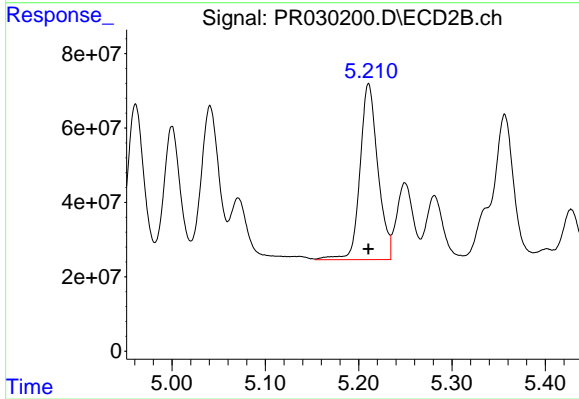
**Manual Integrations**  
**APPROVED**  
 Sohil  
 7/12/2018 7:22:53 PM



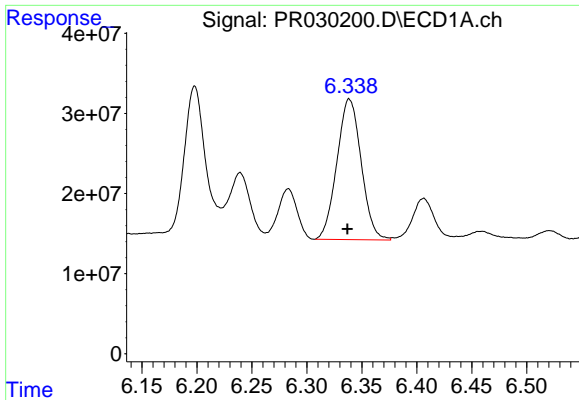
#5 AR-1016-3  
 R.T.: 5.041 min  
 Delta R.T.: -0.002 min  
 Response: 547700131  
 Conc: 555.29 ng/ml



#6 AR-1016-4  
 R.T.: 6.198 min  
 Delta R.T.: 0.001 min  
 Response: 273652037  
 Conc: 565.33 ng/ml



#6 AR-1016-4  
 R.T.: 5.211 min  
 Delta R.T.: 0.000 min  
 Response: 628937889  
 Conc: 547.04 ng/ml

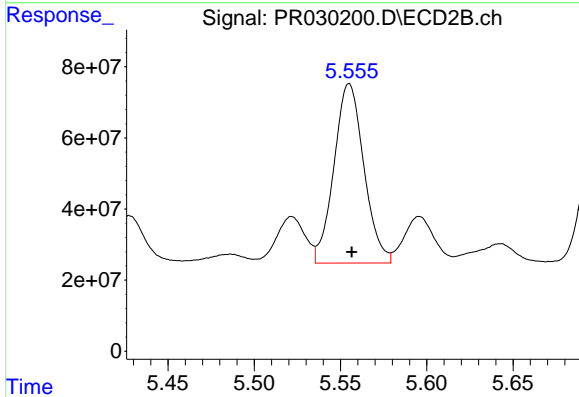


#7 AR-1016-5

R.T.: 6.339 min  
 Delta R.T.: 0.002 min  
 Response: 27064053  
 Conc: 502.54 ng/ml

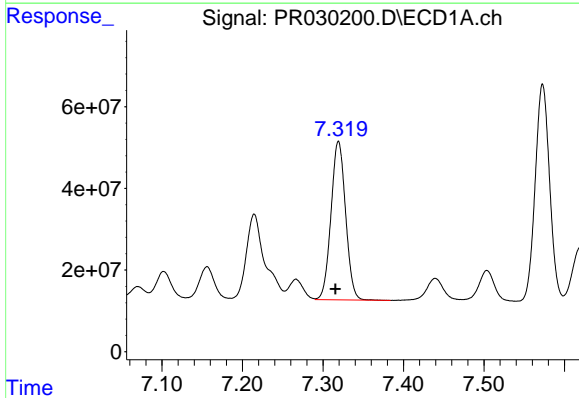
**Instrument :**  
 ECD\_R  
**ClientSampled :**  
 AR1660CCC500

**Manual Integrations**  
**APPROVED**  
 Sohil  
 7/12/2018 7:22:53 PM



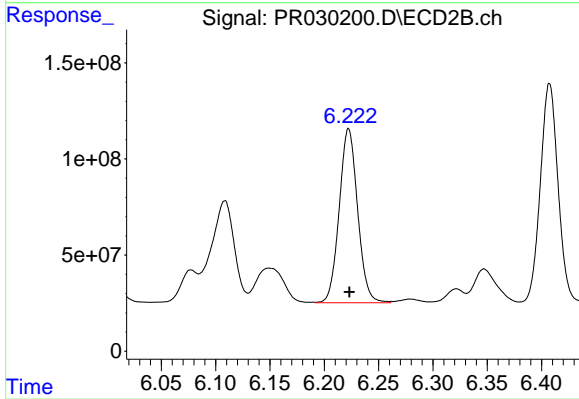
#7 AR-1016-5

R.T.: 5.555 min  
 Delta R.T.: -0.001 min  
 Response: 609487775  
 Conc: 530.06 ng/ml



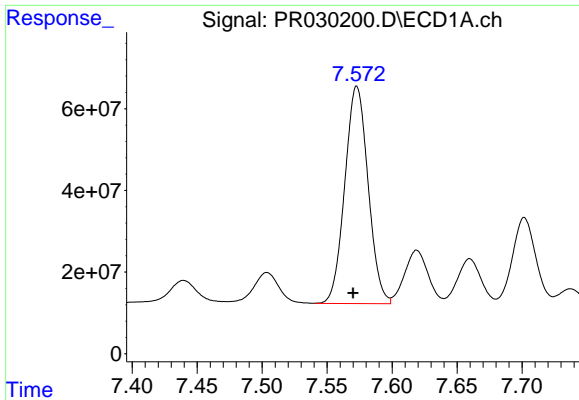
#31 AR-1260-1

R.T.: 7.319 min  
 Delta R.T.: 0.004 min  
 Response: 489149306  
 Conc: 438.96 ng/ml



#31 AR-1260-1

R.T.: 6.222 min  
 Delta R.T.: 0.000 min  
 Response: 1068231198  
 Conc: 515.57 ng/ml

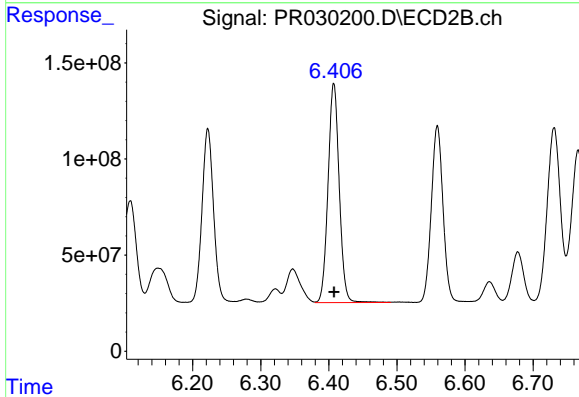


#32 AR-1260-2

R.T.: 7.573 min  
 Delta R.T.: 0.003 min  
 Response: 664012967  
 Conc: 459.92 ng/ml

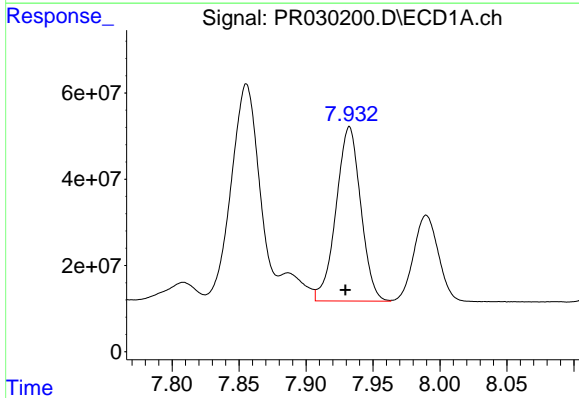
Instrument :  
 ECD\_R  
 ClientSampleId :  
 AR1660CCC500

Manual Integrations  
 APPROVED  
 Sohil  
 7/12/2018 7:22:53 PM



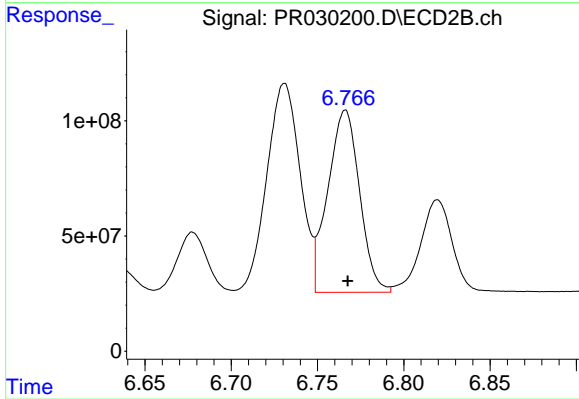
#32 AR-1260-2

R.T.: 6.407 min  
 Delta R.T.: 0.000 min  
 Response: 1300359315  
 Conc: 516.17 ng/ml



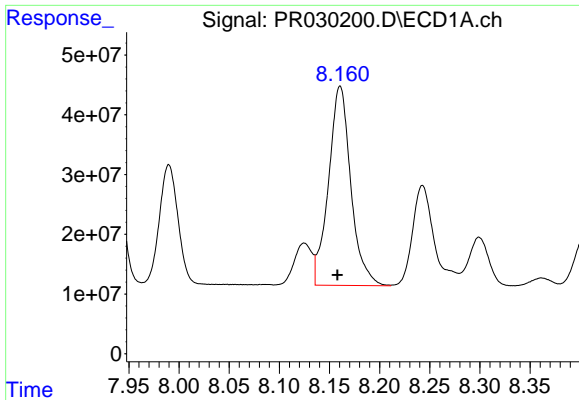
#33 AR-1260-3

R.T.: 7.932 min  
 Delta R.T.: 0.003 min  
 Response: 518946110  
 Conc: 453.57 ng/ml



#33 AR-1260-3

R.T.: 6.766 min  
 Delta R.T.: -0.001 min  
 Response: 1011926445  
 Conc: 540.53 ng/ml

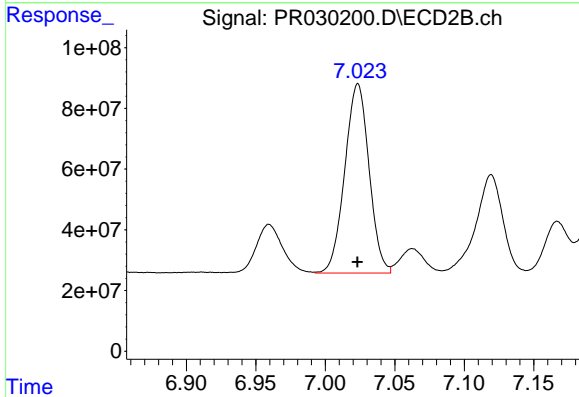


#34 AR-1260-4

R.T.: 8.161 min  
 Delta R.T.: 0.003 min  
 Response: 516786968  
 Conc: 448.58 ng/ml

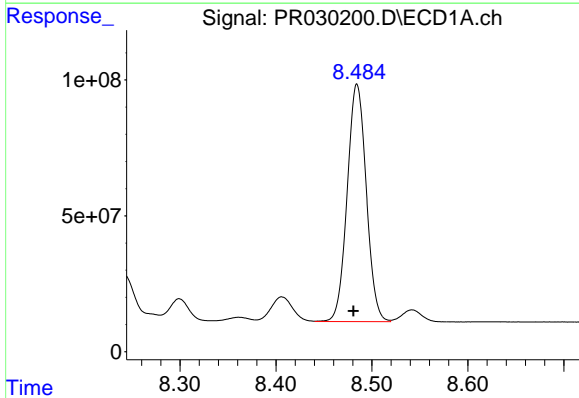
**Instrument :**  
 ECD\_R  
**ClientSampled :**  
 AR1660CCC500

**Manual Integrations**  
**APPROVED**  
 Sohil  
 7/12/2018 7:22:53 PM



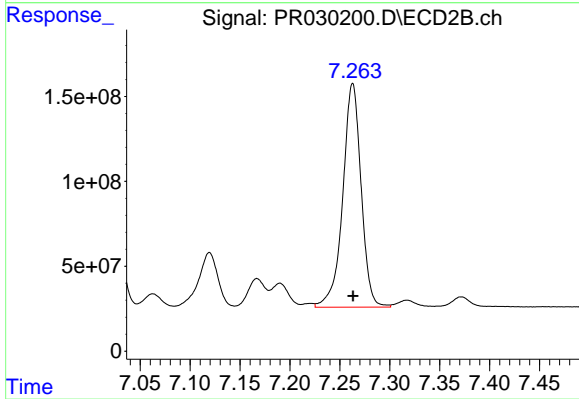
#34 AR-1260-4

R.T.: 7.023 min  
 Delta R.T.: 0.000 min  
 Response: 758376522  
 Conc: 523.08 ng/ml



#35 AR-1260-5

R.T.: 8.484 min  
 Delta R.T.: 0.004 min  
 Response: 1213197023  
 Conc: 459.23 ng/ml



#35 AR-1260-5

R.T.: 7.263 min  
 Delta R.T.: 0.000 min  
 Response: 1687493869  
 Conc: 513.44 ng/ml