

Data Path : Z:\pestpcbsrv\HPCHEM1\ECD_R\Data\PR071318\
 Data File : PR030296.D
 Signal(s) : Signal #1: ECD1A.ch Signal #2: ECD2B.ch
 Acq On : 13 Jul 2018 14:16
 Operator : MA/SM
 Sample : J3807-09
 Misc :
 ALS Vial : 58 Sample Multiplier: 1

Instrument :
 ECD_R
 ClientSampled :

Integration File signal 1: autoint1.e
 Integration File signal 2: autoint2.e
 Quant Time: Jul 18 14:59:01 2018
 Quant Method : Z:\pestpcbsrv\HPCHEM1\ECD_R\Method\PR071318CLP.M
 Quant Title : GC EXTRACTABLES
 QLast Update : Wed Jul 18 11:23:22 2018
 Response via : Initial Calibration
 Integrator: ChemStation

Volume Inj. : 1 µl
 Signal #1 Phase : ZB MR1 Signal #2 Phase: ZB MR2
 Signal #1 Info : 30Mx0.32mmx 0.5µm Signal #2 Info : 30M x 0.32mm x 0.25µm

Compound	RT#1	RT#2	Resp#1	Resp#2	ng/ml	ng/ml
System Monitoring Compounds						
1) SA Tetrachlo...	4.535	0.000	8091848	0	0.288	N.D. #
2) SA Decachlor...	10.325	0.000	5250439	0	0.234	N.D. #
Target Compounds						
3) L1 AR-1016-1	5.257	4.358	127.0E6	188.1E6	201.752	174.317
4) L1 AR-1016-2	5.451	4.763	122.8E6	271.1E6	200.428	181.938
5) L1 AR-1016-3	5.716	4.780	185.5E6	454.2E6	202.277	179.944
6) L1 AR-1016-4	5.801	4.836	160.4E6	270.4E6	205.631	175.499
7) L1 AR-1016-5	6.192	5.203	128.5E6	281.7E6	203.381	215.885
8) L2 AR-1221-1	4.763	3.908	32965306	19479084	80.288	33.425 #
9) L2 AR-1221-2	4.846	3.992	17952186	21421665	67.139	54.828
10) L2 AR-1221-3	4.923	4.067	87655007	120.5E6	95.886	83.481
11) L3 AR-1232-1	5.739	4.546	267.4E6	209.7E6	472.329	400.592
12) L3 AR-1232-2	5.899	4.780	129.2E6	454.2E6	471.037	409.293
13) L3 AR-1232-3	5.988	5.033	108.8E6	232.6E6	552.455	500.012
14) L3 AR-1232-4	6.568	5.348	131.5E6	240.9E6	474.459	425.306
15) L3 AR-1232-5	6.633	5.588	24397815	37451289	86.880	59.976 #
16) L4 AR-1242-1	5.288	4.376	68790052	108.2E6	246.014	207.022
17) L4 AR-1242-2	6.034	4.954	113.5E6	216.4E6	246.727	220.394
18) L4 AR-1242-3	6.332	4.992	114.4E6	185.9E6	193.242	237.838
19) L4 AR-1242-4	6.568	5.782	131.5E6	39407780	310.760	43.777 #
20) L4 AR-1242-5	6.829	5.782	48767357	39407780	128.060	66.496 #
21) L5 AR-1248-1	5.988	4.992	108.8E6	185.9E6	128.543	122.481
22) L5 AR-1248-2	6.568	5.547	131.5E6	201.6E6	155.410	73.520 #
23) L5 AR-1248-3	6.568	5.588	131.5E6	37451289	115.161	19.311 #
24) L5 AR-1248-4	6.633	5.782	24397815	39407780	23.034	24.698
25) L5 AR-1248-5	6.829	6.100	48767357	314.9E6	70.209	267.456 #
26) L6 AR-1254-1	6.784	5.690	126.7E6	189.4E6	75.116	77.501
27) L6 AR-1254-2	7.065	6.000	31240838	39295216	31.875	20.662 #
28) L6 AR-1254-3	7.151	6.315	72234467	42203923	41.514	15.914 #
29) L6 AR-1254-4	7.434	6.627	58004188	45856996	39.491	33.447
30) L6 AR-1254-5	7.696	6.722	142.1E6	474.9E6	140.356	187.729 #
31) L7 AR-1260-1	7.314	6.214	257.4E6	423.6E6	212.530	200.596
32) L7 AR-1260-2	7.568	6.399	336.1E6	483.8E6	205.952	196.764
33) L7 AR-1260-3	7.850	6.551	424.7E6	418.4E6	240.826	202.572
34) L7 AR-1260-4	8.155	7.014	234.4E6	251.0E6	210.769	181.705
35) L7 AR-1260-5	8.478	7.254	518.2E6	608.4E6	207.830	194.259
36) L8 AR-1262-1	7.568	6.757	336.1E6	342.2E6	263.152	134.860 #
37) L8 AR-1262-2	7.927	7.014	232.5E6	251.0E6	121.695	137.982
38) L8 AR-1262-3	8.155	7.254	234.4E6	608.4E6	156.334	176.996
39) L8 AR-1262-4	8.478	7.596	518.2E6	341.9E6	161.205	162.420
40) L8 AR-1262-5	9.554	8.086	126.7E6	99462360	120.806	112.762
41) L9 AR-1268-1	8.810	7.531	313.7E6	101.5E6	79.173	25.488 #

Data Path : Z:\pestpcbsrv\HPCHEM1\ECD_R\Data\PR071318\
 Data File : PR030296.D
 Signal(s) : Signal #1: ECD1A.ch Signal #2: ECD2B.ch
 Acq On : 13 Jul 2018 14:16
 Operator : MA/SM
 Sample : J3807-09
 Misc :
 ALS Vial : 58 Sample Multiplier: 1

Instrument :
 ECD_R
 ClientSampleId :

Integration File signal 1: autoint1.e
 Integration File signal 2: autoint2.e
 Quant Time: Jul 18 14:59:01 2018
 Quant Method : Z:\pestpcbsrv\HPCHEM1\ECD_R\Method\PR071318CLP.M
 Quant Title : GC EXTRACTABLES
 QLast Update : Wed Jul 18 11:23:22 2018
 Response via : Initial Calibration
 Integrator: ChemStation

Volume Inj. : 1 µl
 Signal #1 Phase : ZB MR1 Signal #2 Phase: ZB MR2
 Signal #1 Info : 30Mx0.32mmx 0.5µm Signal #2 Info : 30M x 0.32mm x 0.25µm

	Compound	RT#1	RT#2	Resp#1	Resp#2	ng/ml	ng/ml
42)	L9 AR-1268-2	8.869	7.596	187.5E6	341.9E6	53.692	97.348 #
43)	L9 AR-1268-3	9.213	7.792	33875754	11490709	41.930	4.072 #
44)	L9 AR-1268-4	9.554	8.086	126.7E6	99462360	101.479	86.739
45)	L9 AR-1268-5	9.977	8.368	37694656	27952681	4.194	4.315

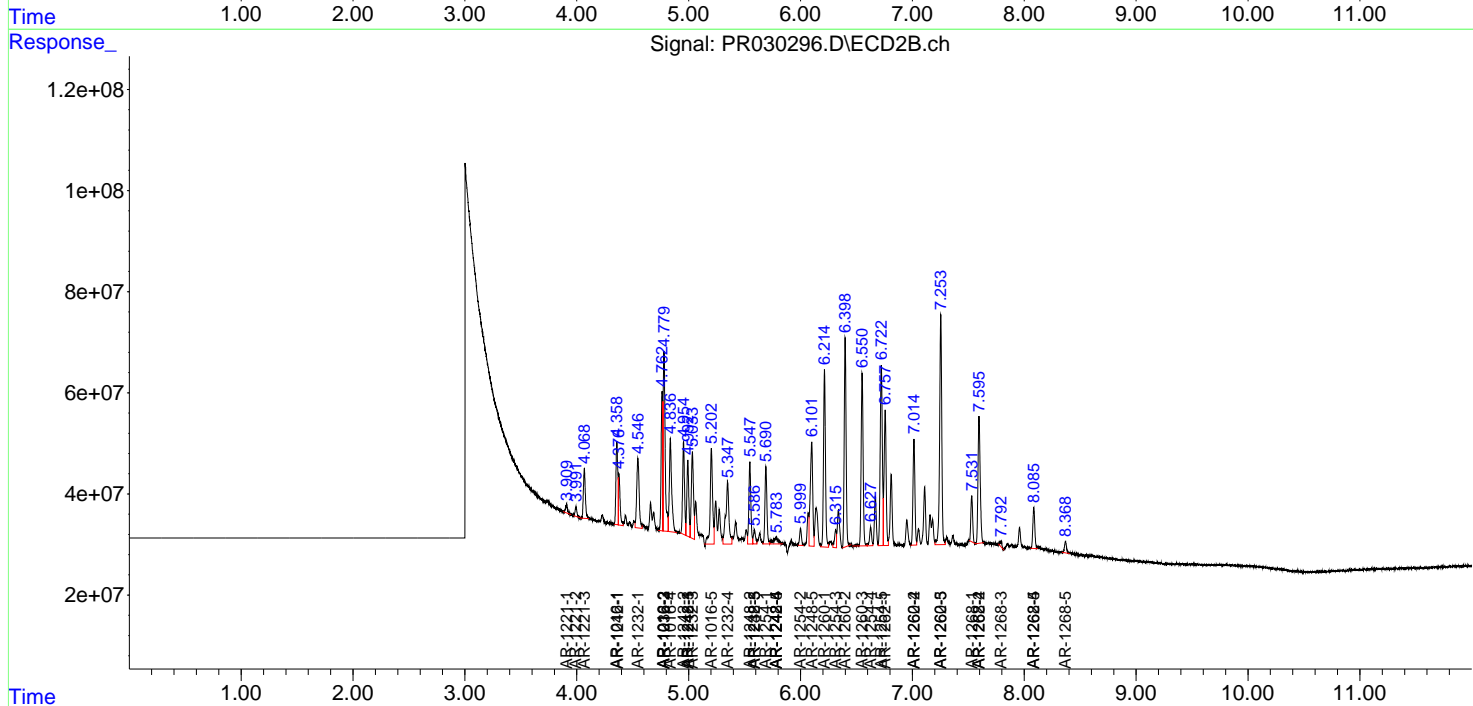
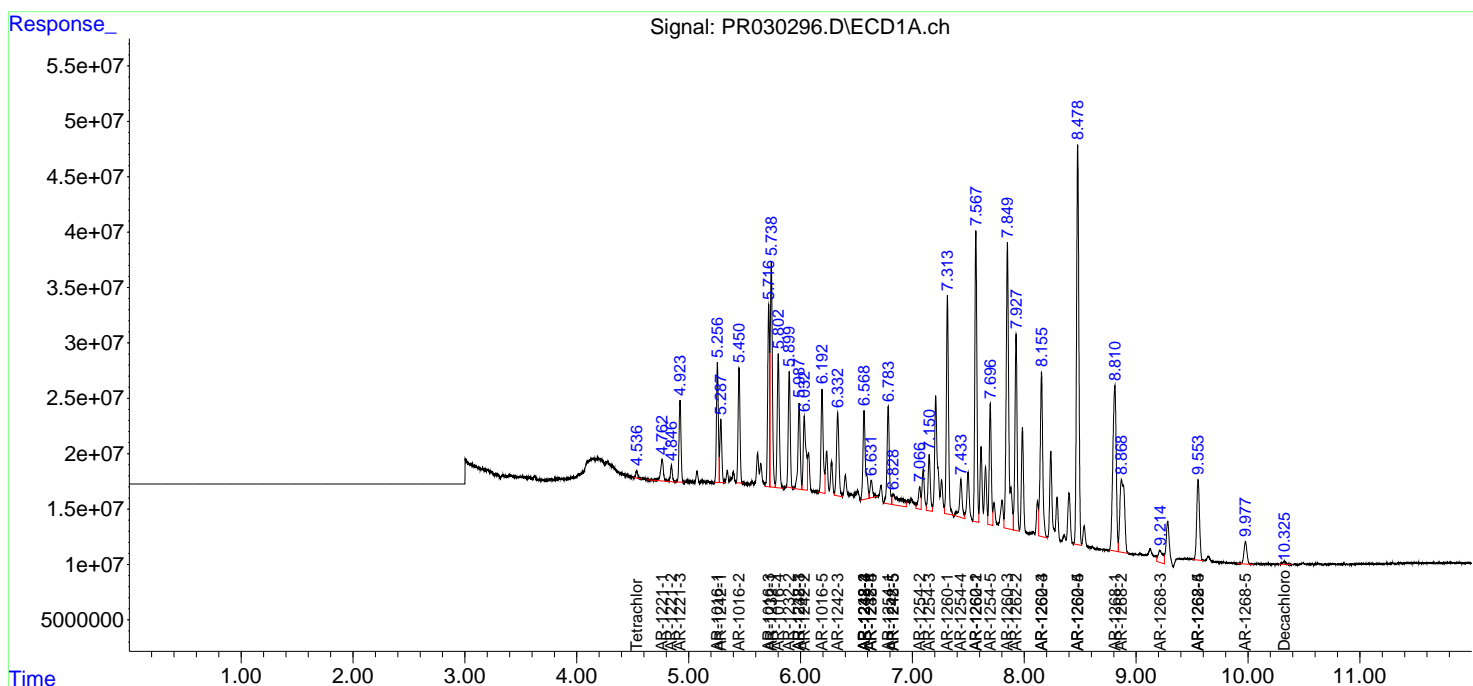
(f)=RT Delta > 1/2 Window (#)=Amounts differ by > 25% (m)=manual int.

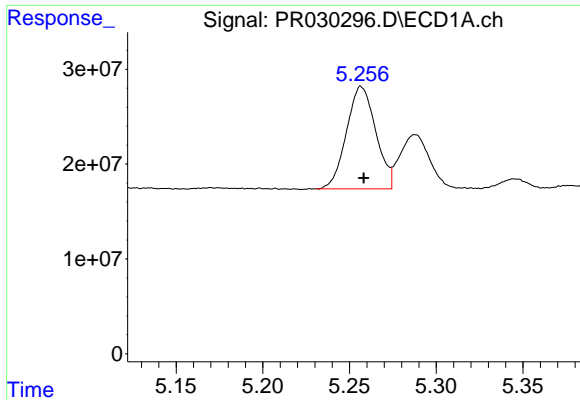
Data Path : Z:\pestpcbsrv\HPCHEM1\ECD_R\Data\PR071318\
 Data File : PR030296.D
 Signal(s) : Signal #1: ECD1A.ch Signal #2: ECD2B.ch
 Acq On : 13 Jul 2018 14:16
 Operator : MA/SM
 Sample : J3807-09
 Misc :
 ALS Vial : 58 Sample Multiplier: 1

Instrument :
 ECD_R
 ClientSampled :

Integration File signal 1: autoint1.e
 Integration File signal 2: autoint2.e
 Quant Time: Jul 18 14:59:01 2018
 Quant Method : Z:\pestpcbsrv\HPCHEM1\ECD_R\Method\PR071318CLP.M
 Quant Title : GC EXTRACTABLES
 QLast Update : Wed Jul 18 11:23:22 2018
 Response via : Initial Calibration
 Integrator: ChemStation

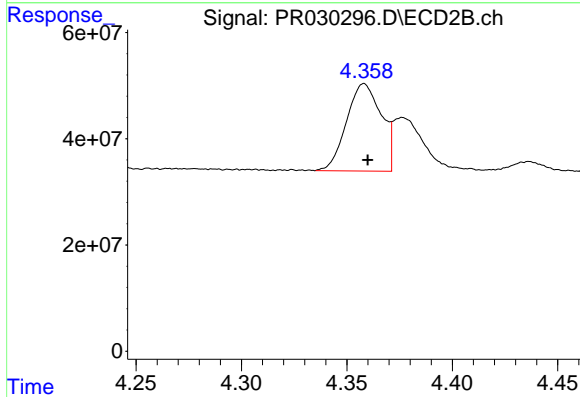
Volume Inj. : 1 µl
 Signal #1 Phase : ZB MR1 Signal #2 Phase: ZB MR2
 Signal #1 Info : 30Mx0.32mmx 0.5µm Signal #2 Info : 30M x 0.32mm x 0.25µm



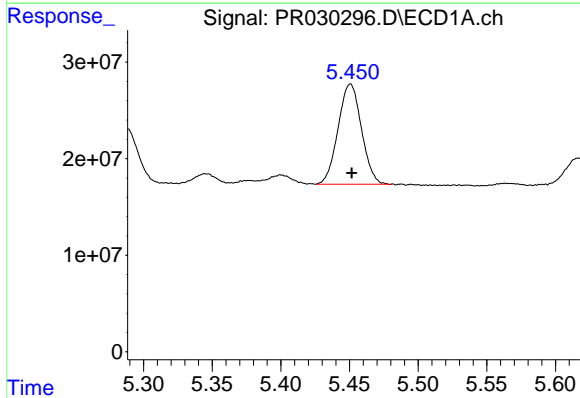


#3 AR-1016-1
 R.T.: 5.257 min
 Delta R.T.: -0.001 min
 Response: 126960822
 Conc: 201.75 ng/ml

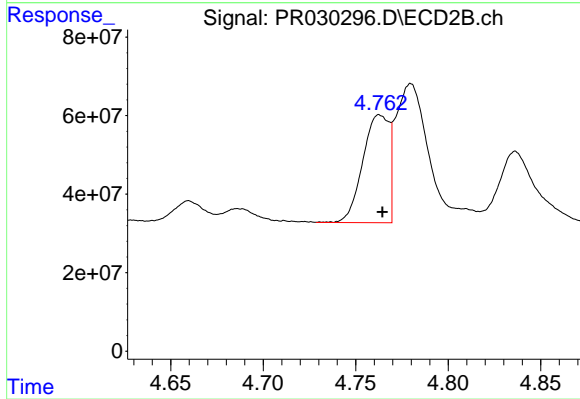
Instrument :
 ECD_R
 ClientSampleId :



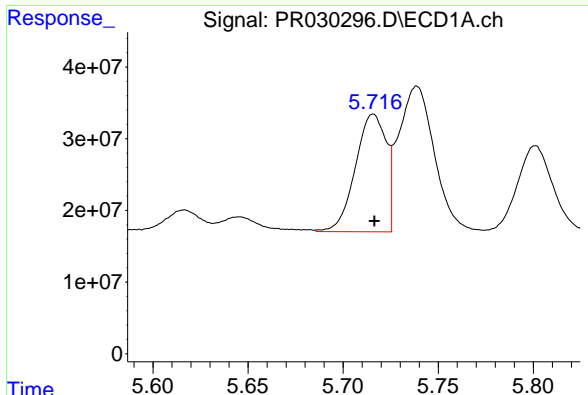
#3 AR-1016-1
 R.T.: 4.358 min
 Delta R.T.: -0.002 min
 Response: 188062493
 Conc: 174.32 ng/ml



#4 AR-1016-2
 R.T.: 5.451 min
 Delta R.T.: 0.000 min
 Response: 122841785
 Conc: 200.43 ng/ml

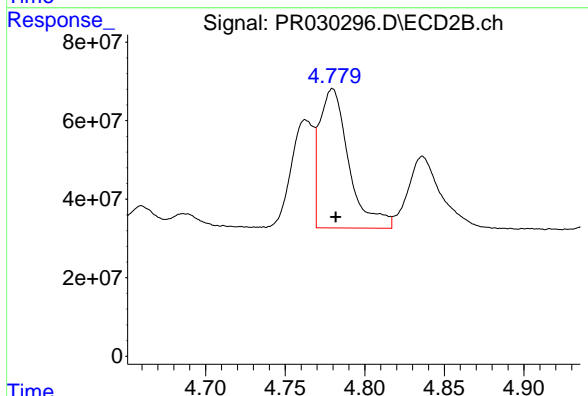


#4 AR-1016-2
 R.T.: 4.763 min
 Delta R.T.: -0.002 min
 Response: 271104801
 Conc: 181.94 ng/ml

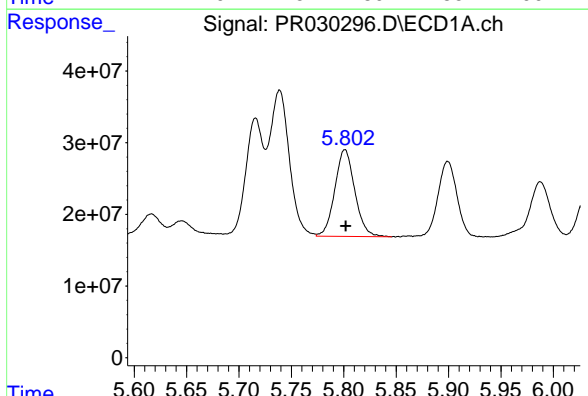


#5 AR-1016-3
 R.T.: 5.716 min
 Delta R.T.: 0.000 min
 Response: 185473498
 Conc: 202.28 ng/ml

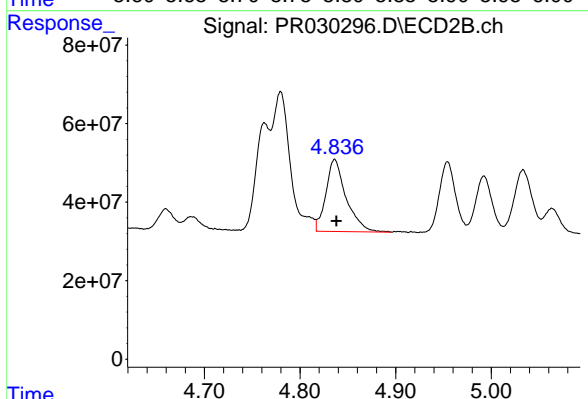
Instrument :
 ECD_R
 ClientSampleId :



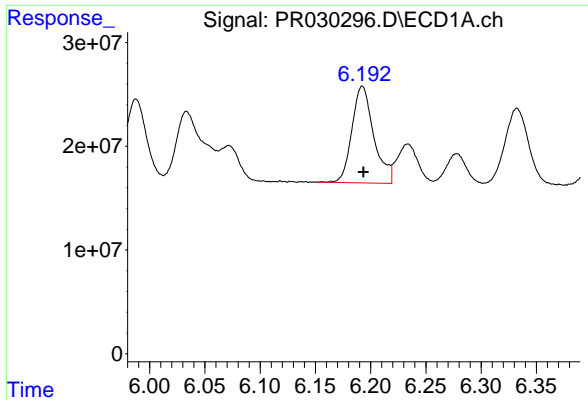
#5 AR-1016-3
 R.T.: 4.780 min
 Delta R.T.: -0.002 min
 Response: 454231669
 Conc: 179.94 ng/ml



#6 AR-1016-4
 R.T.: 5.801 min
 Delta R.T.: 0.000 min
 Response: 160369280
 Conc: 205.63 ng/ml

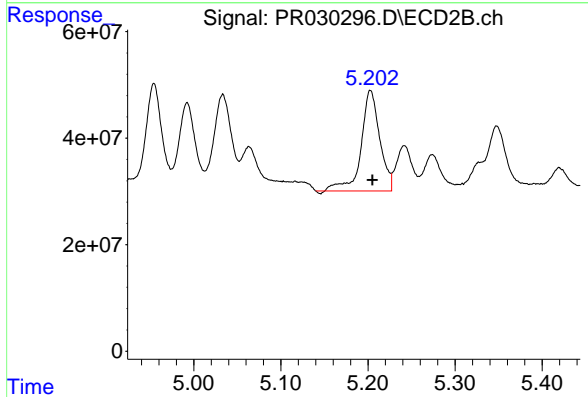


#6 AR-1016-4
 R.T.: 4.836 min
 Delta R.T.: -0.002 min
 Response: 270419238
 Conc: 175.50 ng/ml

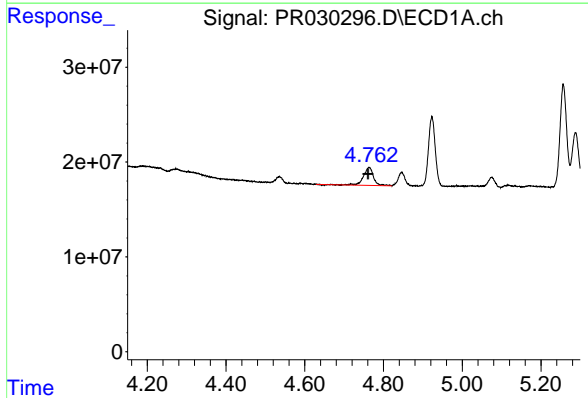


#7 AR-1016-5
 R.T.: 6.192 min
 Delta R.T.: 0.000 min
 Response: 128540564
 Conc: 203.38 ng/ml

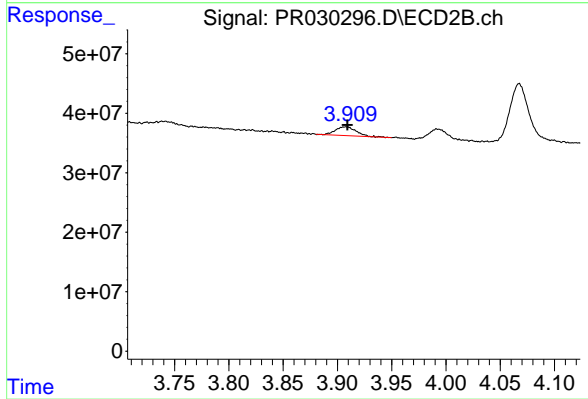
Instrument :
 ECD_R
 ClientSampleId :



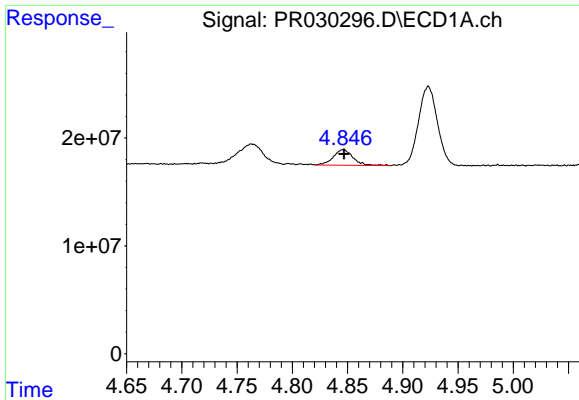
#7 AR-1016-5
 R.T.: 5.203 min
 Delta R.T.: -0.002 min
 Response: 281715721
 Conc: 215.89 ng/ml



#8 AR-1221-1
 R.T.: 4.763 min
 Delta R.T.: 0.002 min
 Response: 32965306
 Conc: 80.29 ng/ml



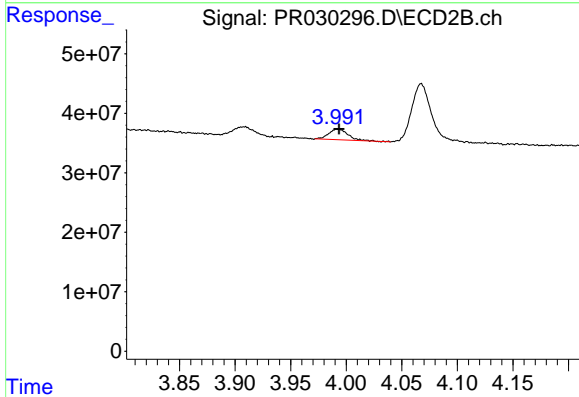
#8 AR-1221-1
 R.T.: 3.908 min
 Delta R.T.: 0.000 min
 Response: 19479084
 Conc: 33.43 ng/ml



#9 AR-1221-2

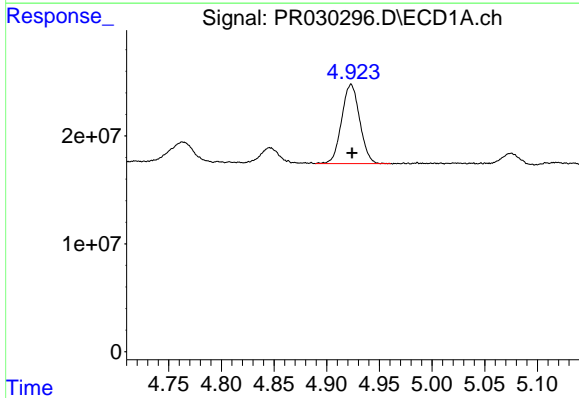
R.T.: 4.846 min
 Delta R.T.: 0.000 min
 Response: 17952186
 Conc: 67.14 ng/ml

Instrument :
 ECD_R
 ClientSampleId :



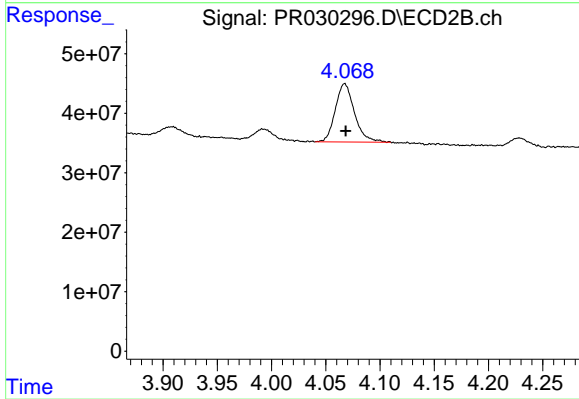
#9 AR-1221-2

R.T.: 3.992 min
 Delta R.T.: -0.001 min
 Response: 21421665
 Conc: 54.83 ng/ml



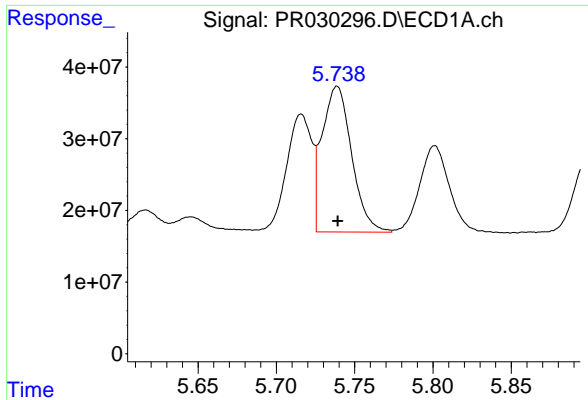
#10 AR-1221-3

R.T.: 4.923 min
 Delta R.T.: 0.000 min
 Response: 87655007
 Conc: 95.89 ng/ml



#10 AR-1221-3

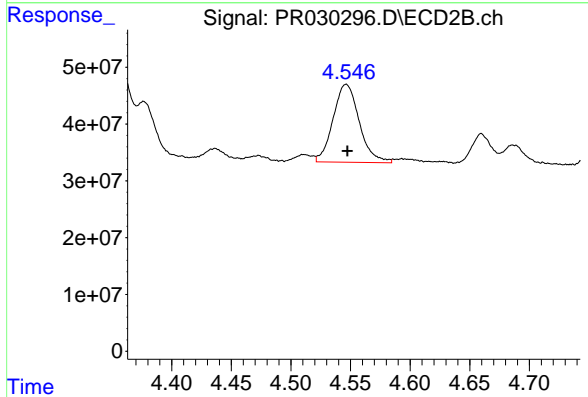
R.T.: 4.067 min
 Delta R.T.: 0.000 min
 Response: 120527733
 Conc: 83.48 ng/ml



#11 AR-1232-1

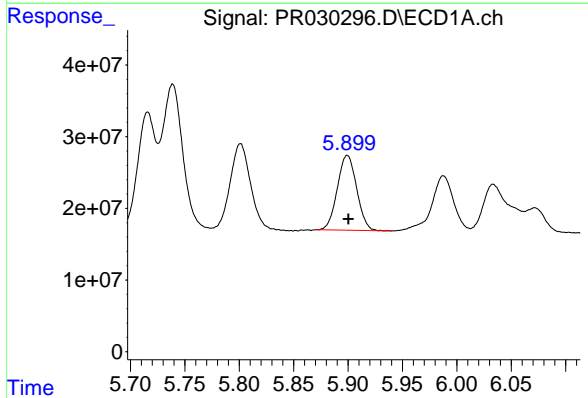
R.T.: 5.739 min
 Delta R.T.: 0.000 min
 Response: 267434343
 Conc: 472.33 ng/ml

Instrument :
 ECD_R
 ClientSampleId :



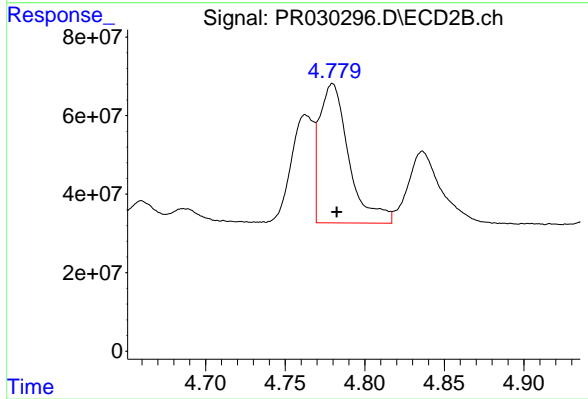
#11 AR-1232-1

R.T.: 4.546 min
 Delta R.T.: -0.001 min
 Response: 209688636
 Conc: 400.59 ng/ml



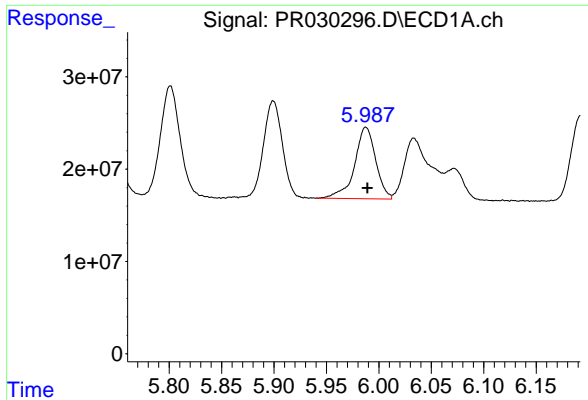
#12 AR-1232-2

R.T.: 5.899 min
 Delta R.T.: -0.001 min
 Response: 129242319
 Conc: 471.04 ng/ml



#12 AR-1232-2

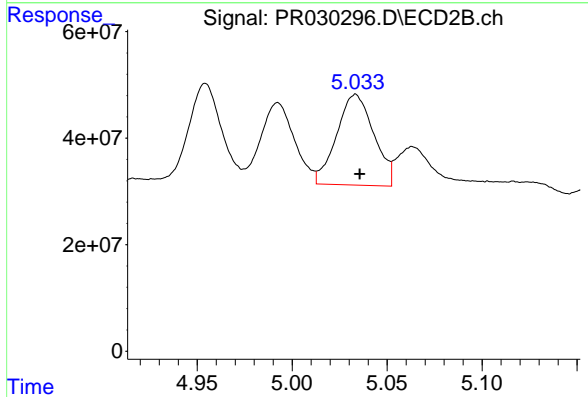
R.T.: 4.780 min
 Delta R.T.: -0.003 min
 Response: 454231669
 Conc: 409.29 ng/ml



#13 AR-1232-3

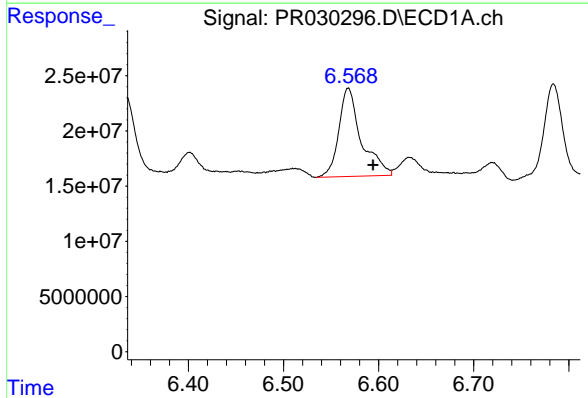
R.T.: 5.988 min
 Delta R.T.: -0.001 min
 Response: 108803024
 Conc: 552.45 ng/ml

Instrument :
 ECD_R
 ClientSampleId :



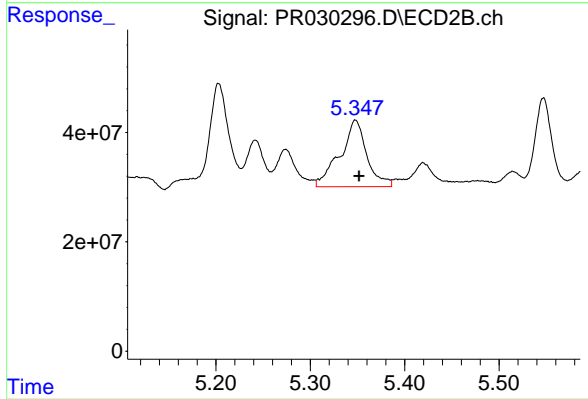
#13 AR-1232-3

R.T.: 5.033 min
 Delta R.T.: -0.002 min
 Response: 232579374
 Conc: 500.01 ng/ml



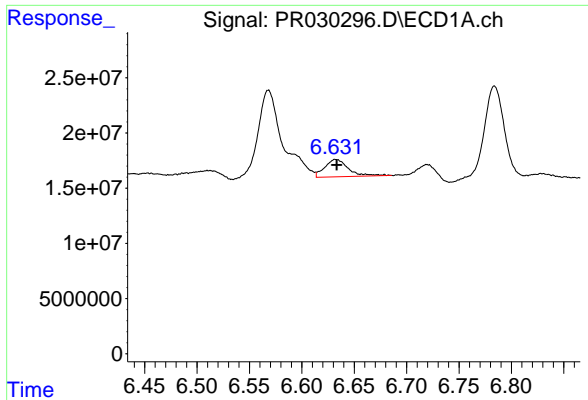
#14 AR-1232-4

R.T.: 6.568 min
 Delta R.T.: -0.026 min
 Response: 131536940
 Conc: 474.46 ng/ml



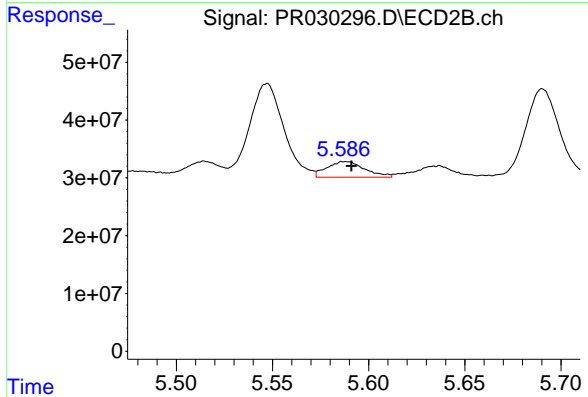
#14 AR-1232-4

R.T.: 5.348 min
 Delta R.T.: -0.004 min
 Response: 240936889
 Conc: 425.31 ng/ml

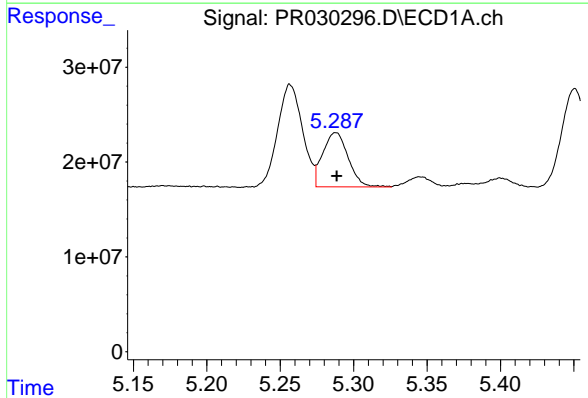


#15 AR-1232-5
 R.T.: 6.633 min
 Delta R.T.: 0.000 min
 Response: 24397815
 Conc: 86.88 ng/ml

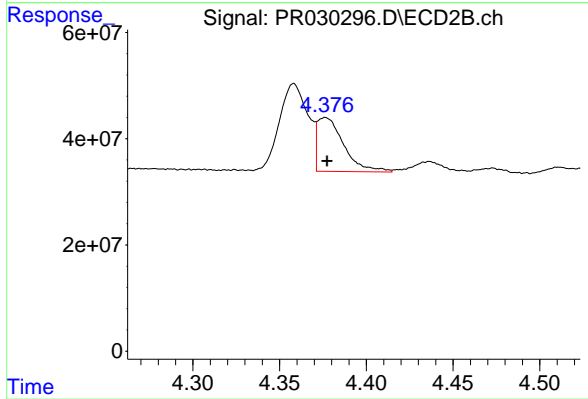
Instrument :
 ECD_R
 ClientSampleId :



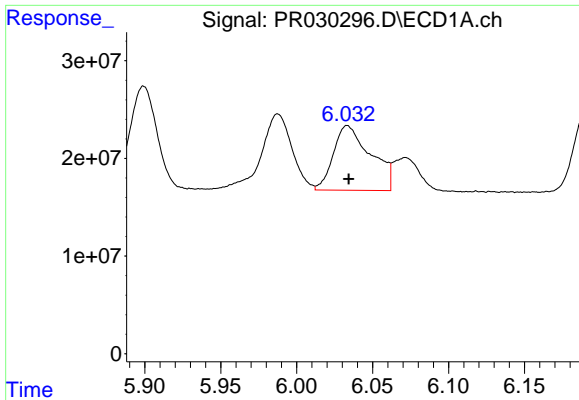
#15 AR-1232-5
 R.T.: 5.588 min
 Delta R.T.: -0.003 min
 Response: 37451289
 Conc: 59.98 ng/ml



#16 AR-1242-1
 R.T.: 5.288 min
 Delta R.T.: 0.000 min
 Response: 68790052
 Conc: 246.01 ng/ml



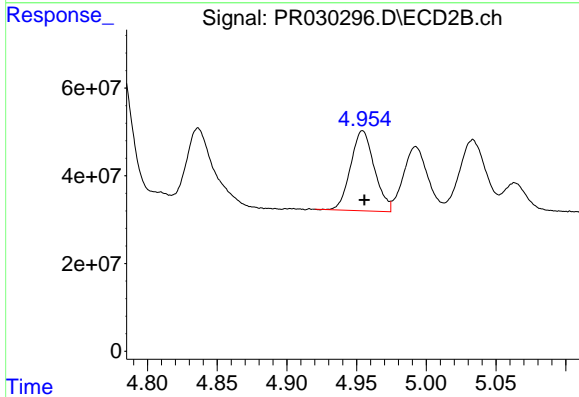
#16 AR-1242-1
 R.T.: 4.376 min
 Delta R.T.: -0.001 min
 Response: 108177228
 Conc: 207.02 ng/ml



#17 AR-1242-2

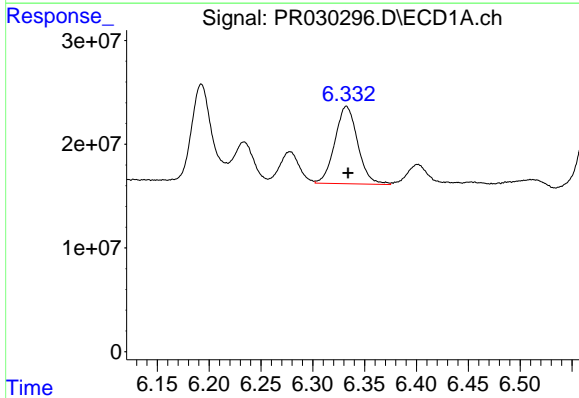
R.T.: 6.034 min
 Delta R.T.: 0.000 min
 Response: 113475700
 Conc: 246.73 ng/ml

Instrument :
 ECD_R
 ClientSampleId :



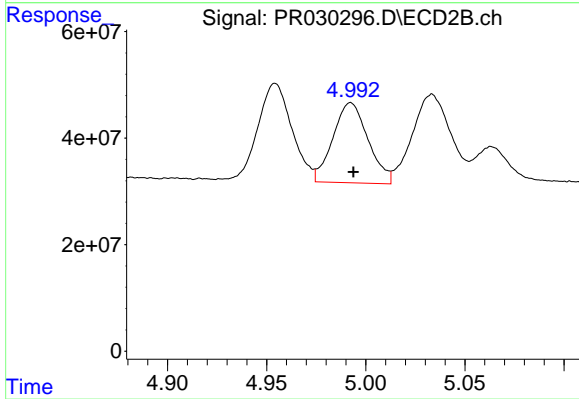
#17 AR-1242-2

R.T.: 4.954 min
 Delta R.T.: -0.001 min
 Response: 216377946
 Conc: 220.39 ng/ml



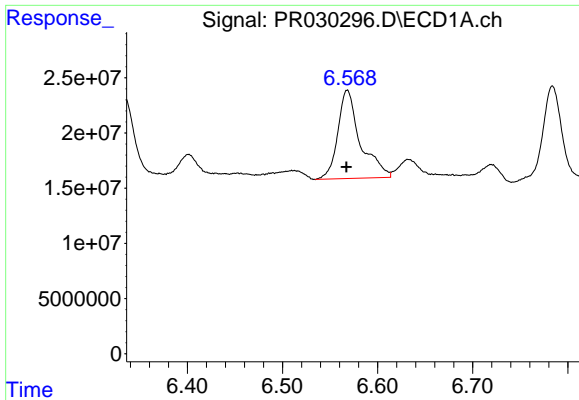
#18 AR-1242-3

R.T.: 6.332 min
 Delta R.T.: -0.001 min
 Response: 114438976
 Conc: 193.24 ng/ml



#18 AR-1242-3

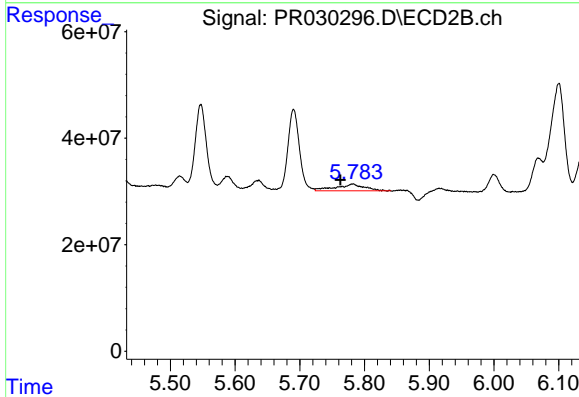
R.T.: 4.992 min
 Delta R.T.: -0.001 min
 Response: 185948986
 Conc: 237.84 ng/ml



#19 AR-1242-4

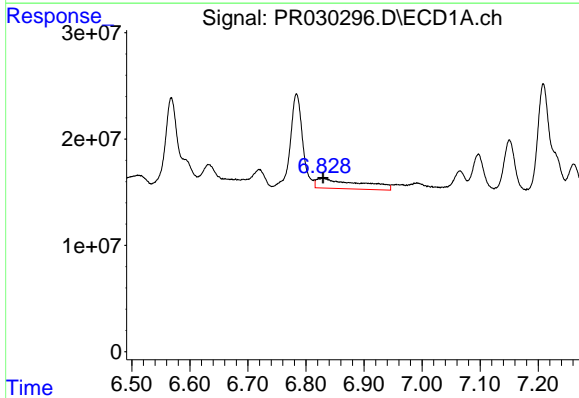
R.T.: 6.568 min
 Delta R.T.: 0.000 min
 Response: 131536940
 Conc: 310.76 ng/ml

Instrument :
 ECD_R
 ClientSampleId :



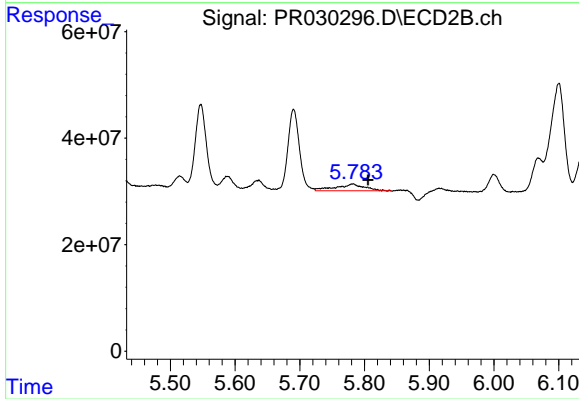
#19 AR-1242-4

R.T.: 5.782 min
 Delta R.T.: 0.019 min
 Response: 39407780
 Conc: 43.78 ng/ml



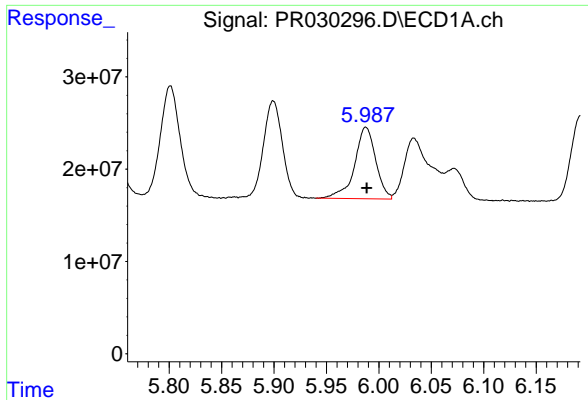
#20 AR-1242-5

R.T.: 6.829 min
 Delta R.T.: 0.000 min
 Response: 48767357
 Conc: 128.06 ng/ml



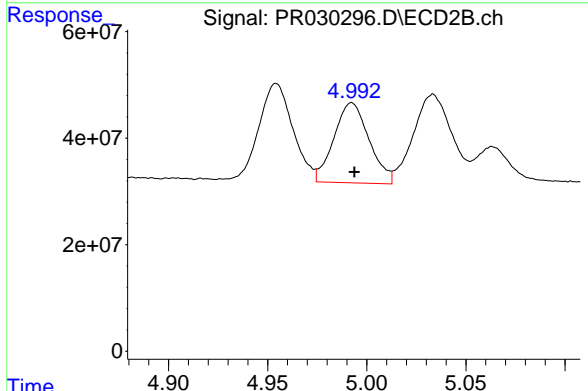
#20 AR-1242-5

R.T.: 5.782 min
 Delta R.T.: -0.023 min
 Response: 39407780
 Conc: 66.50 ng/ml

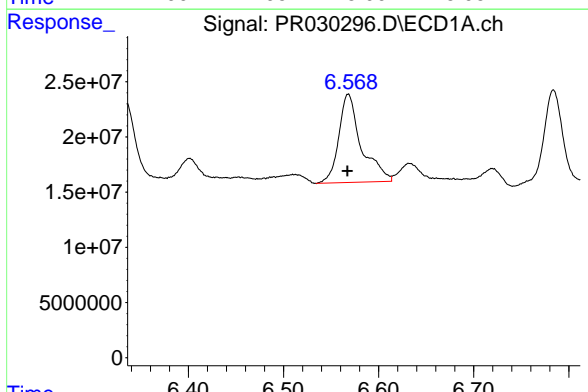


#21 AR-1248-1
 R.T.: 5.988 min
 Delta R.T.: 0.000 min
 Response: 108803024
 Conc: 128.54 ng/ml

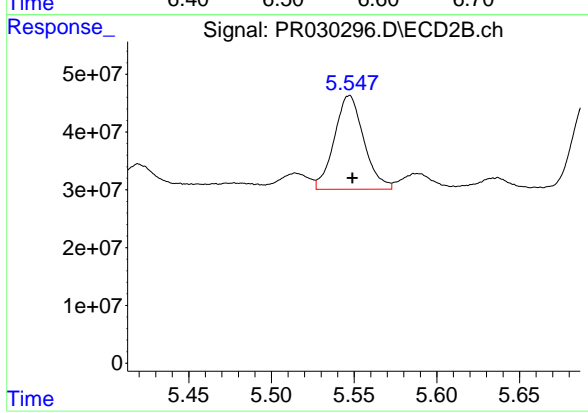
Instrument :
 ECD_R
 ClientSampleId :



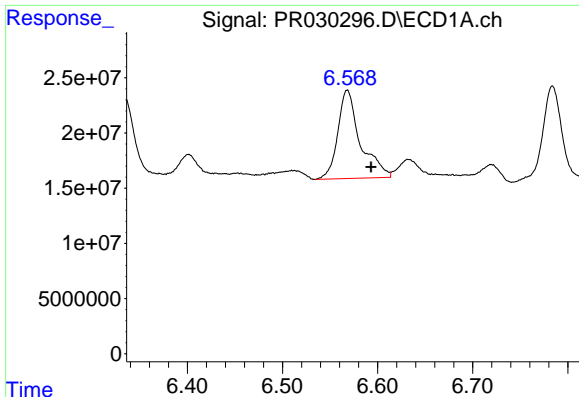
#21 AR-1248-1
 R.T.: 4.992 min
 Delta R.T.: -0.001 min
 Response: 185948986
 Conc: 122.48 ng/ml



#22 AR-1248-2
 R.T.: 6.568 min
 Delta R.T.: 0.001 min
 Response: 131536940
 Conc: 155.41 ng/ml



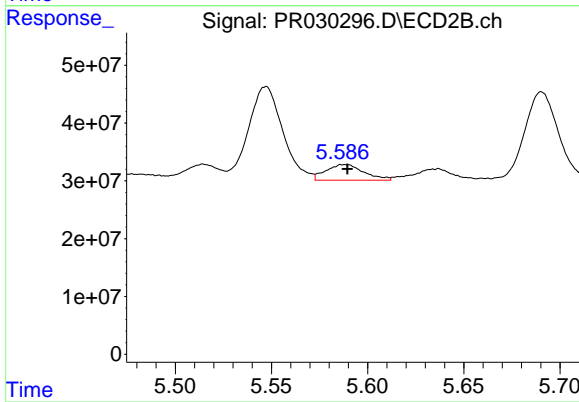
#22 AR-1248-2
 R.T.: 5.547 min
 Delta R.T.: -0.002 min
 Response: 201639057
 Conc: 73.52 ng/ml



#23 AR-1248-3

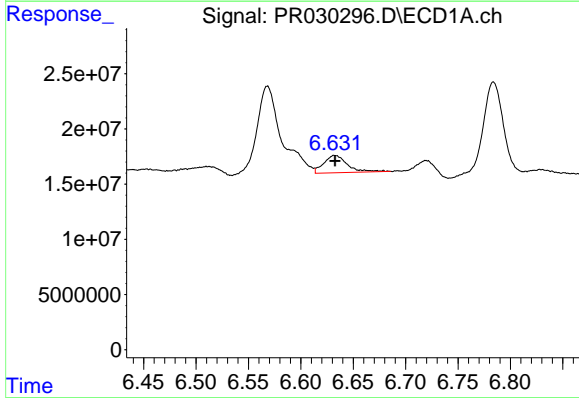
R.T.: 6.568 min
 Delta R.T.: -0.025 min
 Response: 131536940
 Conc: 115.16 ng/ml

Instrument :
 ECD_R
 ClientSampleId :



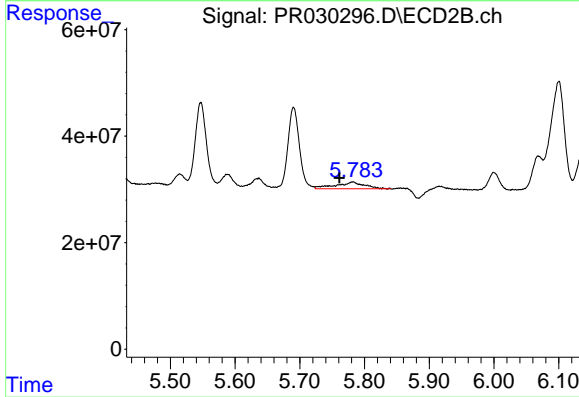
#23 AR-1248-3

R.T.: 5.588 min
 Delta R.T.: -0.001 min
 Response: 37451289
 Conc: 19.31 ng/ml



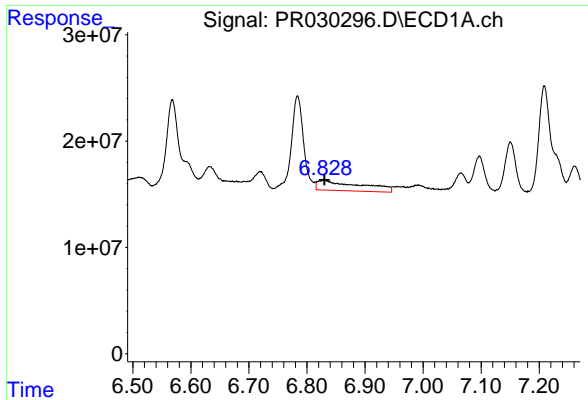
#24 AR-1248-4

R.T.: 6.633 min
 Delta R.T.: 0.000 min
 Response: 24397815
 Conc: 23.03 ng/ml



#24 AR-1248-4

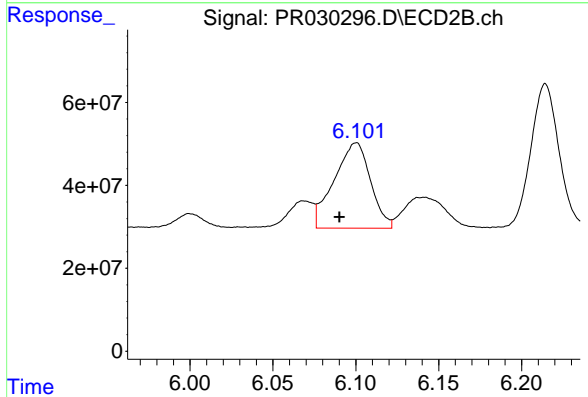
R.T.: 5.782 min
 Delta R.T.: 0.021 min
 Response: 39407780
 Conc: 24.70 ng/ml



#25 AR-1248-5

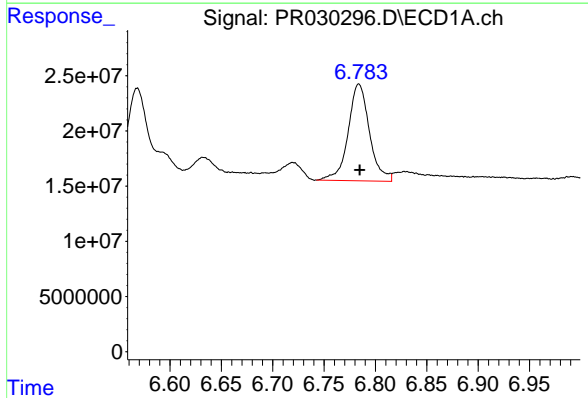
R.T.: 6.829 min
 Delta R.T.: 0.000 min
 Response: 48767357
 Conc: 70.21 ng/ml

Instrument :
 ECD_R
 ClientSampled :



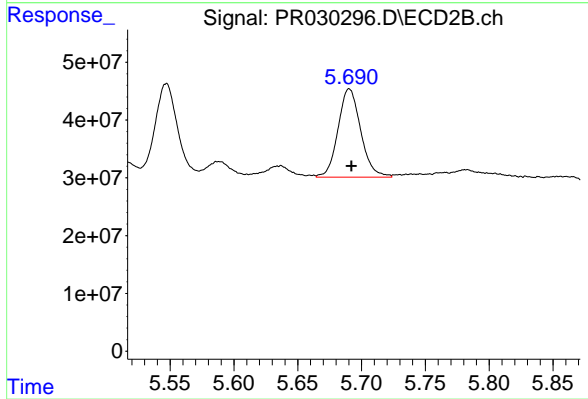
#25 AR-1248-5

R.T.: 6.100 min
 Delta R.T.: 0.010 min
 Response: 314914365
 Conc: 267.46 ng/ml



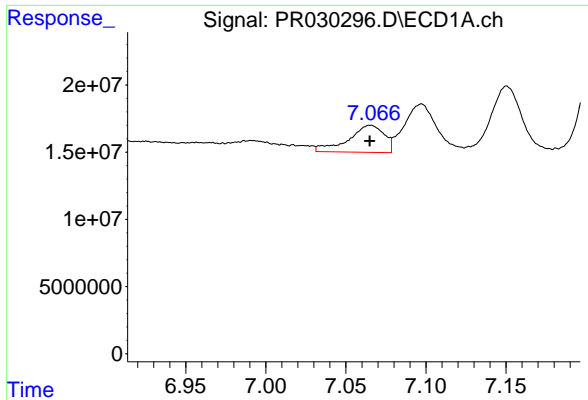
#26 AR-1254-1

R.T.: 6.784 min
 Delta R.T.: 0.000 min
 Response: 126664400
 Conc: 75.12 ng/ml



#26 AR-1254-1

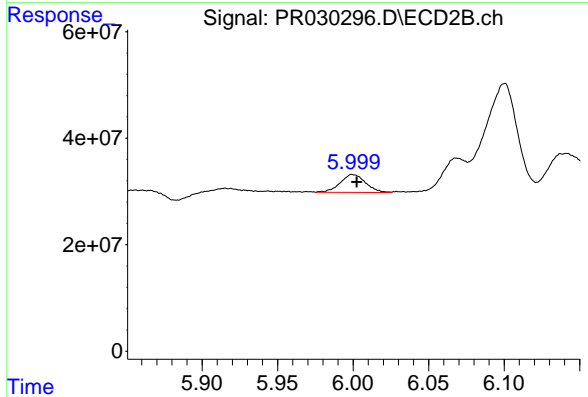
R.T.: 5.690 min
 Delta R.T.: -0.002 min
 Response: 189434094
 Conc: 77.50 ng/ml



#27 AR-1254-2

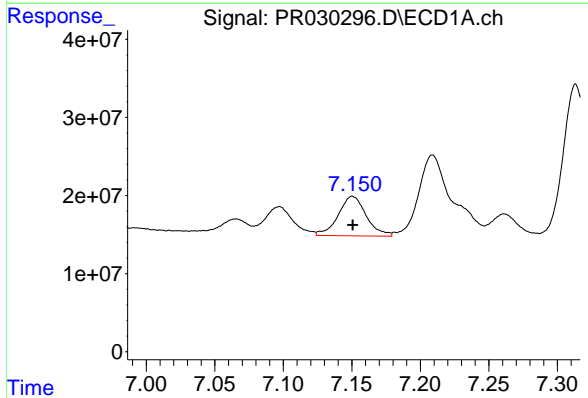
R.T.: 7.065 min
 Delta R.T.: 0.000 min
 Response: 31240838
 Conc: 31.87 ng/ml

Instrument :
 ECD_R
 ClientSampleId :



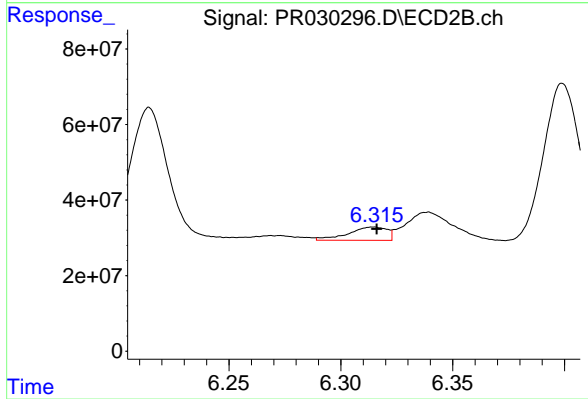
#27 AR-1254-2

R.T.: 6.000 min
 Delta R.T.: -0.003 min
 Response: 39295216
 Conc: 20.66 ng/ml



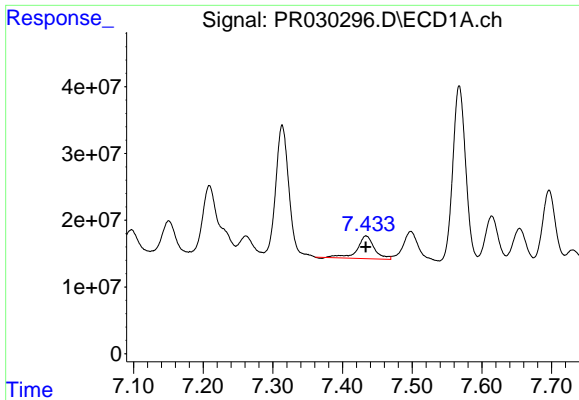
#28 AR-1254-3

R.T.: 7.151 min
 Delta R.T.: 0.000 min
 Response: 72234467
 Conc: 41.51 ng/ml



#28 AR-1254-3

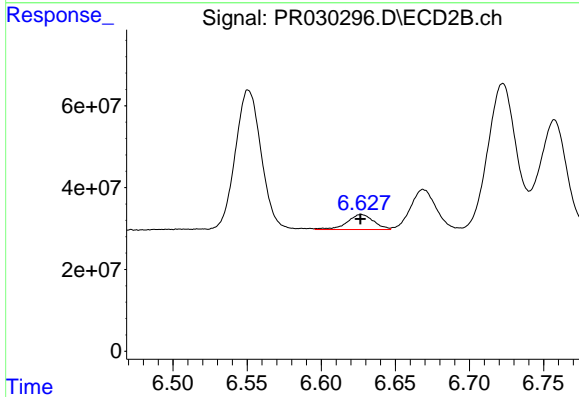
R.T.: 6.315 min
 Delta R.T.: -0.002 min
 Response: 42203923
 Conc: 15.91 ng/ml



#29 AR-1254-4

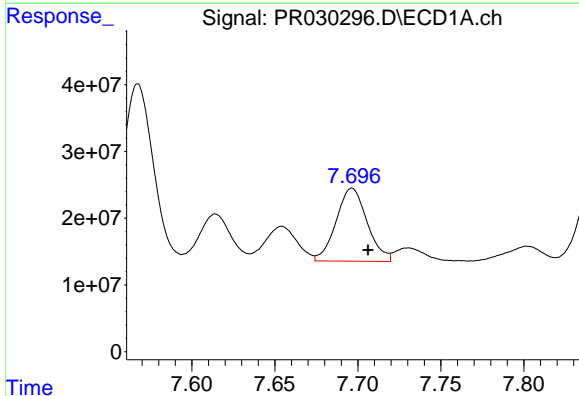
R.T.: 7.434 min
 Delta R.T.: 0.000 min
 Response: 58004188
 Conc: 39.49 ng/ml

Instrument :
 ECD_R
 ClientSampleId :



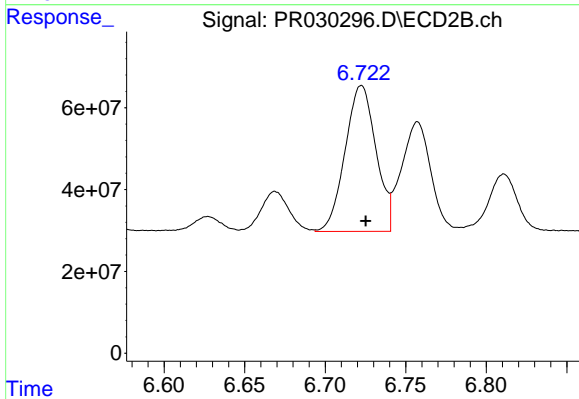
#29 AR-1254-4

R.T.: 6.627 min
 Delta R.T.: 0.000 min
 Response: 45856996
 Conc: 33.45 ng/ml



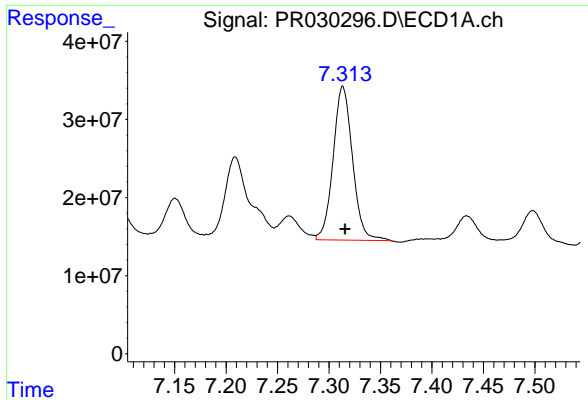
#30 AR-1254-5

R.T.: 7.696 min
 Delta R.T.: -0.010 min
 Response: 142149193
 Conc: 140.36 ng/ml



#30 AR-1254-5

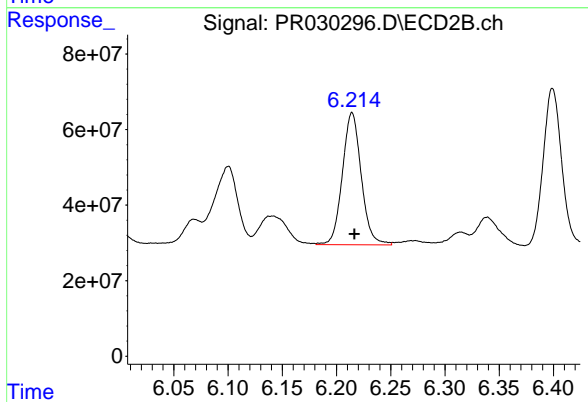
R.T.: 6.722 min
 Delta R.T.: -0.003 min
 Response: 474937552
 Conc: 187.73 ng/ml



#31 AR-1260-1

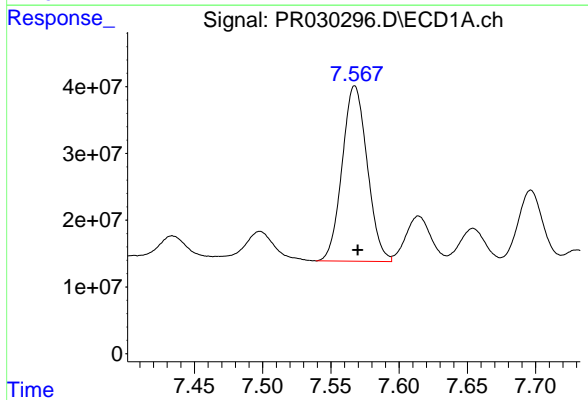
R.T.: 7.314 min
 Delta R.T.: -0.002 min
 Response: 257402987
 Conc: 212.53 ng/ml

Instrument :
 ECD_R
 ClientSampleId :



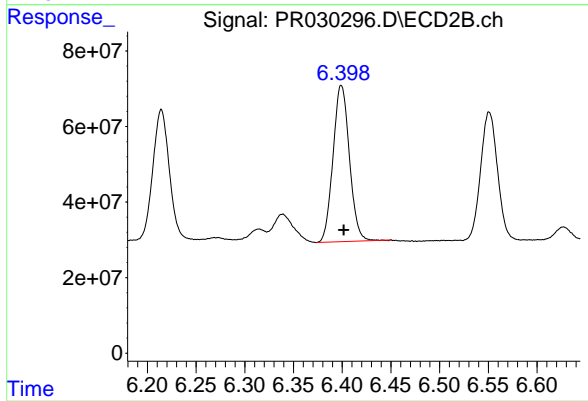
#31 AR-1260-1

R.T.: 6.214 min
 Delta R.T.: -0.002 min
 Response: 423625226
 Conc: 200.60 ng/ml



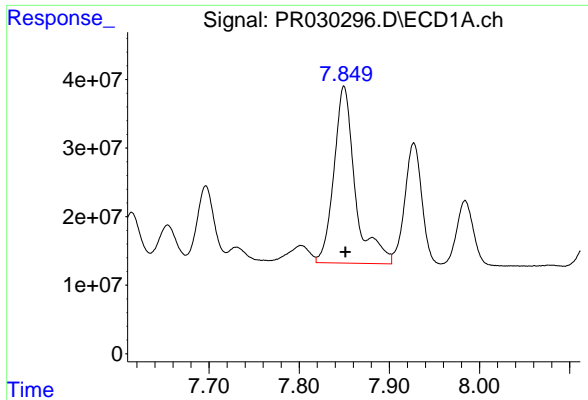
#32 AR-1260-2

R.T.: 7.568 min
 Delta R.T.: -0.002 min
 Response: 336107573
 Conc: 205.95 ng/ml



#32 AR-1260-2

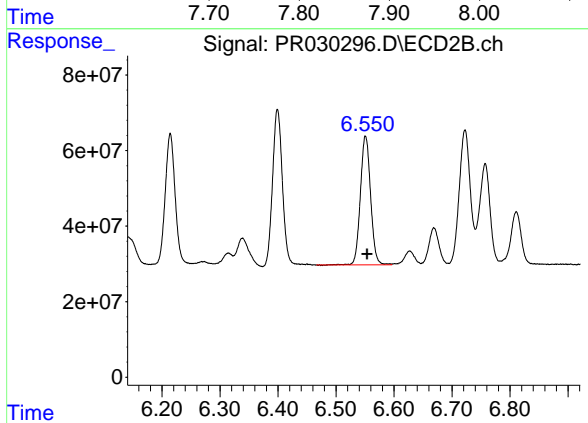
R.T.: 6.399 min
 Delta R.T.: -0.003 min
 Response: 483786701
 Conc: 196.76 ng/ml



#33 AR-1260-3

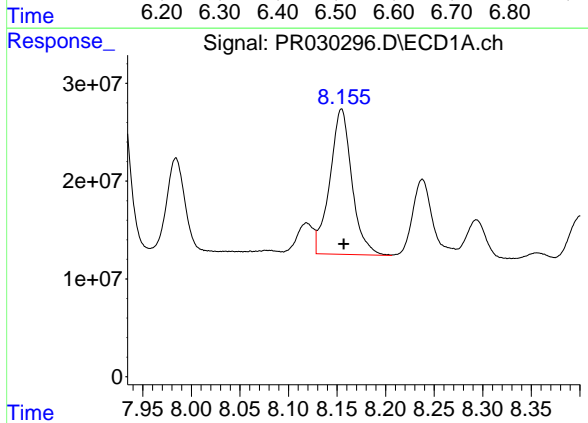
R.T.: 7.850 min
 Delta R.T.: -0.002 min
 Response: 424706261
 Conc: 240.83 ng/ml

Instrument :
 ECD_R
 ClientSampled :



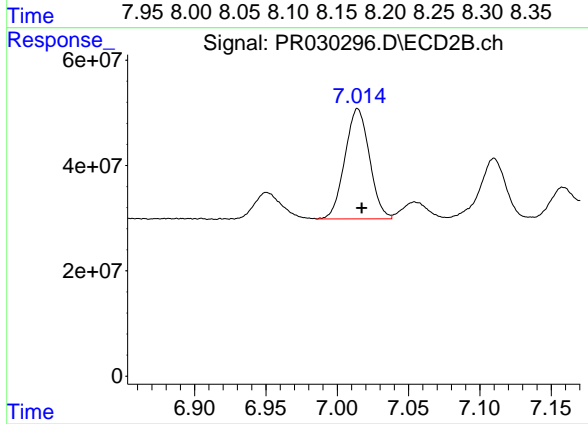
#33 AR-1260-3

R.T.: 6.551 min
 Delta R.T.: -0.003 min
 Response: 418431435
 Conc: 202.57 ng/ml



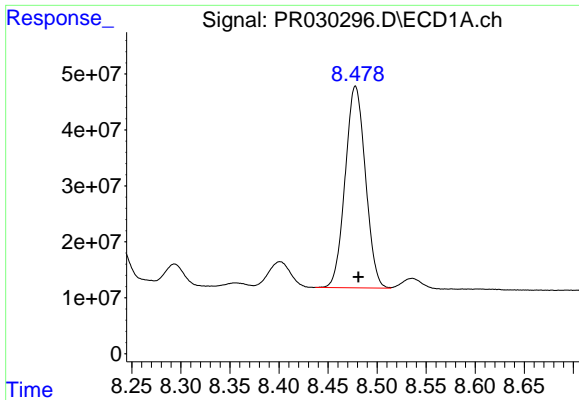
#34 AR-1260-4

R.T.: 8.155 min
 Delta R.T.: -0.002 min
 Response: 234369108
 Conc: 210.77 ng/ml



#34 AR-1260-4

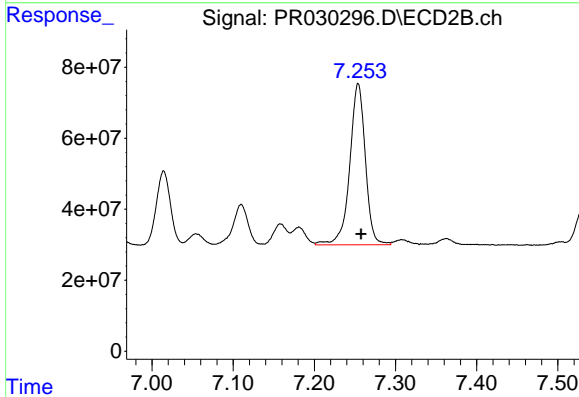
R.T.: 7.014 min
 Delta R.T.: -0.003 min
 Response: 251025312
 Conc: 181.70 ng/ml



#35 AR-1260-5

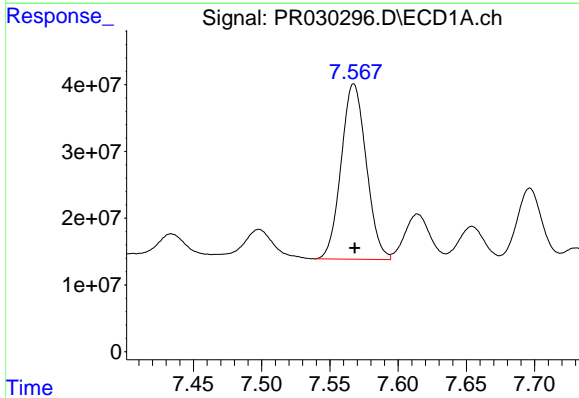
R.T.: 8.478 min
Delta R.T.: -0.003 min
Response: 518203080
Conc: 207.83 ng/ml

Instrument :
ECD_R
ClientSampleId :



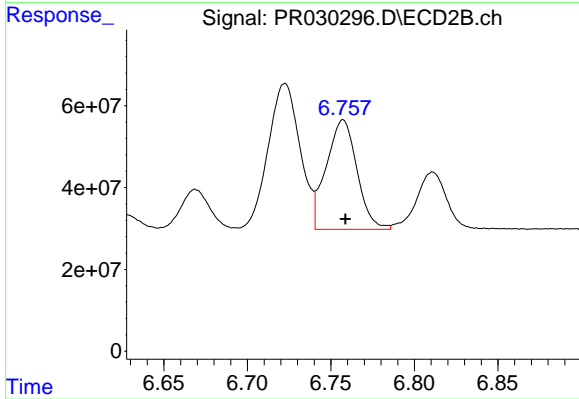
#35 AR-1260-5

R.T.: 7.254 min
Delta R.T.: -0.003 min
Response: 608393576
Conc: 194.26 ng/ml



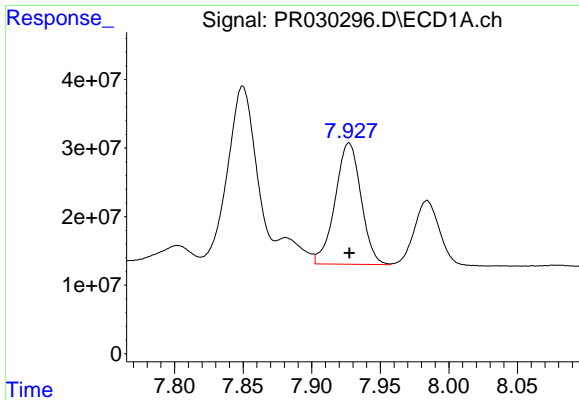
#36 AR-1262-1

R.T.: 7.568 min
Delta R.T.: 0.000 min
Response: 336107573
Conc: 263.15 ng/ml



#36 AR-1262-1

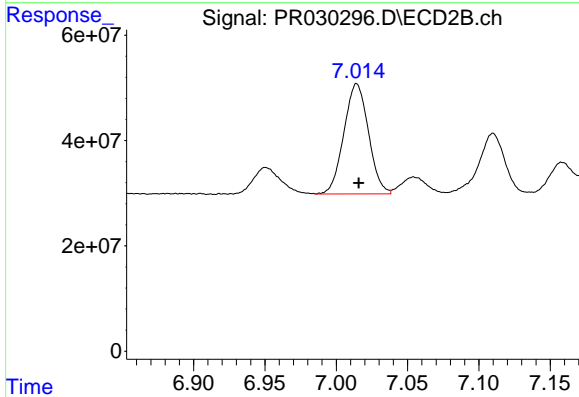
R.T.: 6.757 min
Delta R.T.: -0.002 min
Response: 342202050
Conc: 134.86 ng/ml



#37 AR-1262-2

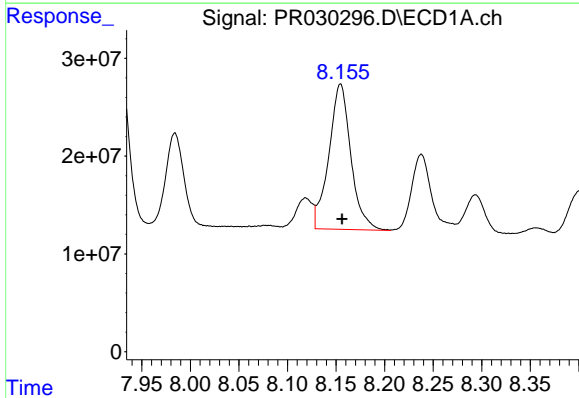
R.T.: 7.927 min
 Delta R.T.: 0.000 min
 Response: 232505868
 Conc: 121.70 ng/ml

Instrument :
 ECD_R
 ClientSampled :



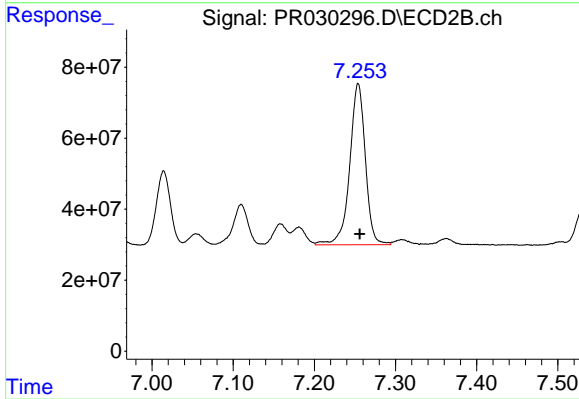
#37 AR-1262-2

R.T.: 7.014 min
 Delta R.T.: -0.001 min
 Response: 251025312
 Conc: 137.98 ng/ml



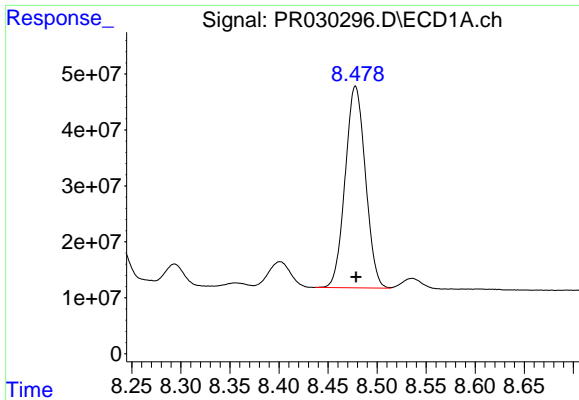
#38 AR-1262-3

R.T.: 8.155 min
 Delta R.T.: -0.002 min
 Response: 234369108
 Conc: 156.33 ng/ml



#38 AR-1262-3

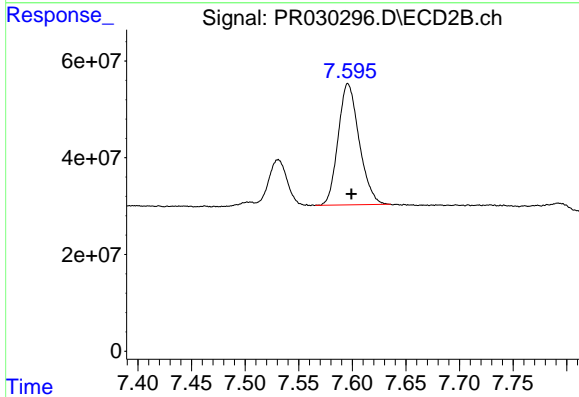
R.T.: 7.254 min
 Delta R.T.: -0.002 min
 Response: 608393576
 Conc: 177.00 ng/ml



#39 AR-1262-4

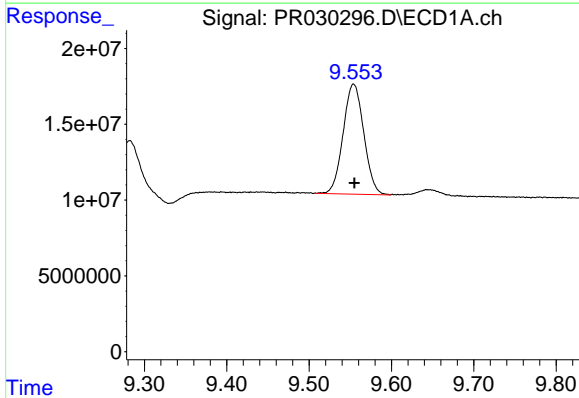
R.T.: 8.478 min
 Delta R.T.: 0.000 min
 Response: 518203080
 Conc: 161.20 ng/ml

Instrument :
 ECD_R
 ClientSampleId :



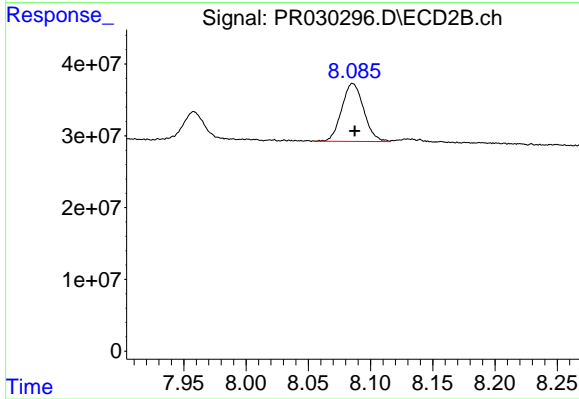
#39 AR-1262-4

R.T.: 7.596 min
 Delta R.T.: -0.003 min
 Response: 341907236
 Conc: 162.42 ng/ml



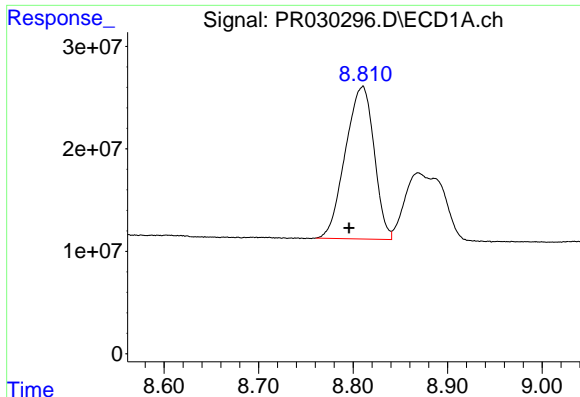
#40 AR-1262-5

R.T.: 9.554 min
 Delta R.T.: -0.001 min
 Response: 126680514
 Conc: 120.81 ng/ml



#40 AR-1262-5

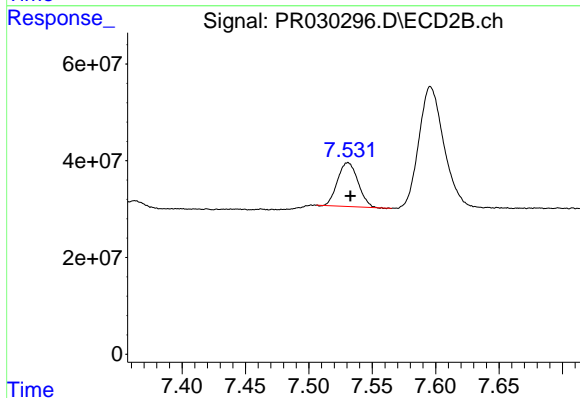
R.T.: 8.086 min
 Delta R.T.: -0.002 min
 Response: 99462360
 Conc: 112.76 ng/ml



#41 AR-1268-1

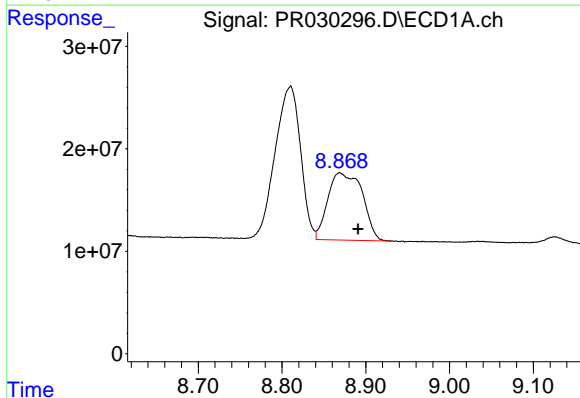
R.T.: 8.810 min
 Delta R.T.: 0.014 min
 Response: 313740752
 Conc: 79.17 ng/ml

Instrument :
 ECD_R
 ClientSampleId :



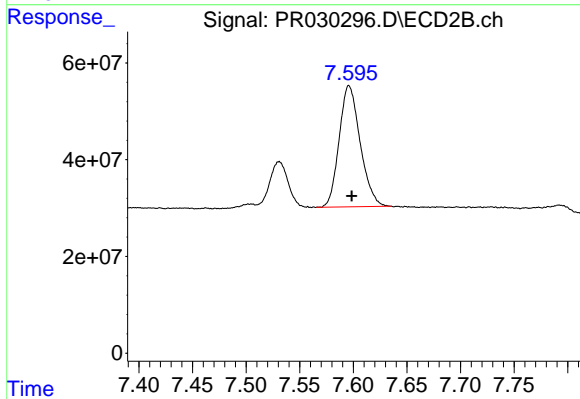
#41 AR-1268-1

R.T.: 7.531 min
 Delta R.T.: -0.002 min
 Response: 101484755
 Conc: 25.49 ng/ml



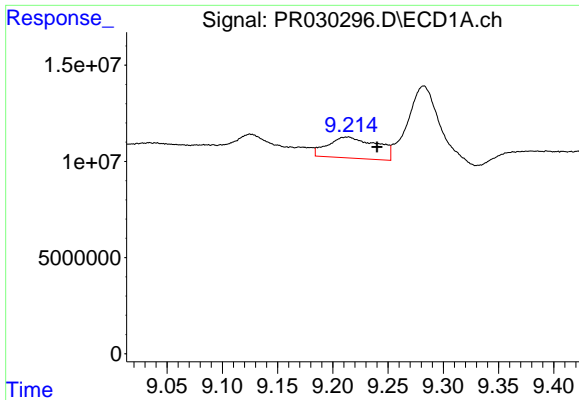
#42 AR-1268-2

R.T.: 8.869 min
 Delta R.T.: -0.021 min
 Response: 187530247
 Conc: 53.69 ng/ml



#42 AR-1268-2

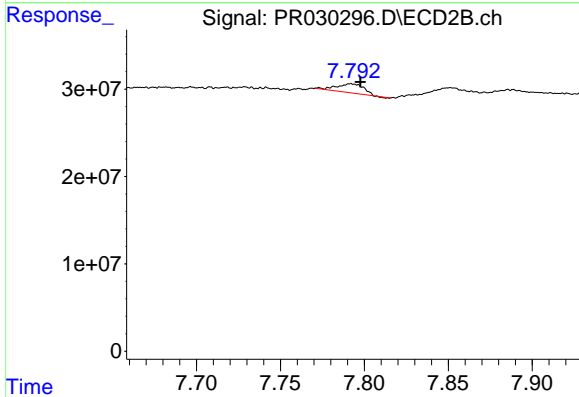
R.T.: 7.596 min
 Delta R.T.: -0.002 min
 Response: 341907236
 Conc: 97.35 ng/ml



#43 AR-1268-3

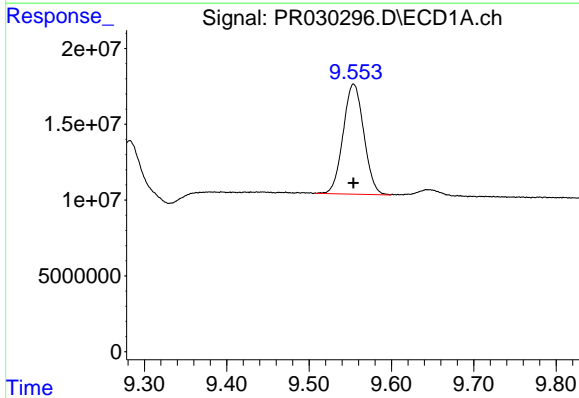
R.T.: 9.213 min
 Delta R.T.: -0.027 min
 Response: 33875754
 Conc: 41.93 ng/ml

Instrument :
 ECD_R
 ClientSampled :



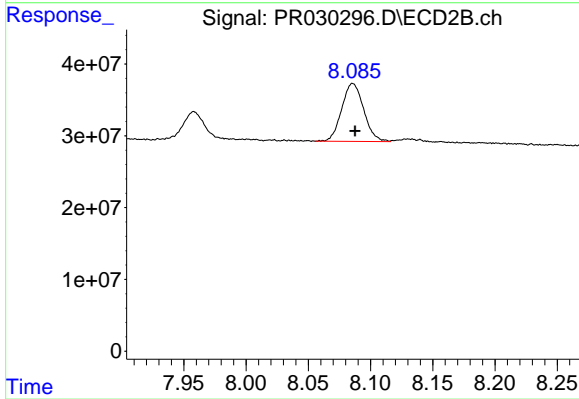
#43 AR-1268-3

R.T.: 7.792 min
 Delta R.T.: -0.006 min
 Response: 11490709
 Conc: 4.07 ng/ml



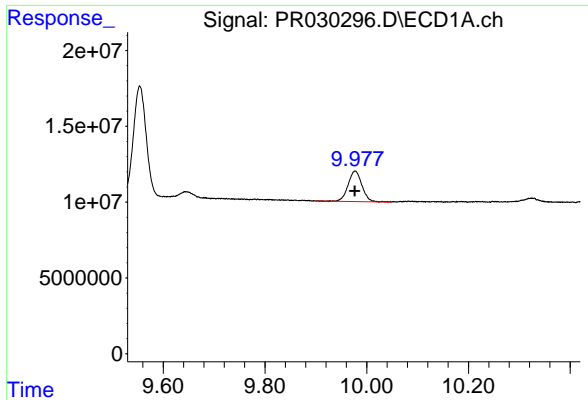
#44 AR-1268-4

R.T.: 9.554 min
 Delta R.T.: 0.000 min
 Response: 126680514
 Conc: 101.48 ng/ml



#44 AR-1268-4

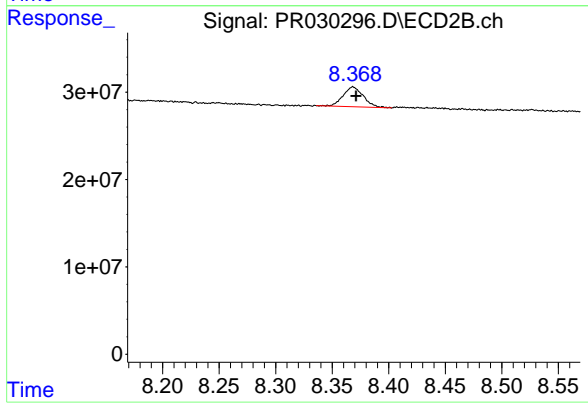
R.T.: 8.086 min
 Delta R.T.: -0.002 min
 Response: 99462360
 Conc: 86.74 ng/ml



#45 AR-1268-5

R.T.: 9.977 min
Delta R.T.: 0.000 min
Response: 37694656
Conc: 4.19 ng/ml

Instrument :
ECD_R
ClientSampleId :



#45 AR-1268-5

R.T.: 8.368 min
Delta R.T.: -0.003 min
Response: 27952681
Conc: 4.31 ng/ml