

Data Path : Z:\pestpcbsrv\HPCHEM1\ECD_R\Data\PR071322\
 Data File : PR055266.D
 Signal(s) : Signal #1: ECD1A.ch Signal #2: ECD2B.ch
 Acq On : 13 Jul 2022 09:17
 Operator : AJ\MA
 Sample : HEXANE
 Misc :
 ALS Vial : 1 Sample Multiplier: 1

Instrument :
 ECD_R
 ClientSampleId :

Integration File signal 1: autoint1.e
 Integration File signal 2: autoint2.e
 Quant Time: Jul 14 03:25:29 2022
 Quant Method : Z:\pestpcbsrv\HPCHEM1\ECD_R\Method\PR062222CLP.M
 Quant Title : GC EXTRACTABLES
 QLast Update : Thu Jun 23 10:22:07 2022
 Response via : Initial Calibration
 Integrator: ChemStation

Volume Inj. : 1 µl
 Signal #1 Phase : ZB MR1 Signal #2 Phase: ZB MR2
 Signal #1 Info : 30Mx0.32mmx 0.5µm Signal #2 Info : 30M x 0.32mm x 0.25µm

Compound	RT#1	RT#2	Resp#1	Resp#2	ng/ml	ng/ml
----------	------	------	--------	--------	-------	-------

System Monitoring Compounds

Target Compounds

3)	L1	AR-1016-1	4.830f	4.040	523614	36119	4.848	0.586 #
4)	L1	AR-1016-2	4.830f	4.049	523614	75853	3.421	0.873 #
5)	L1	AR-1016-3	0.000	4.229	0	109390	N.D.	2.357 #
6)	L1	AR-1016-4	0.000	4.270	0	87627	N.D.	2.314 #
7)	L1	AR-1016-5	0.000	4.478	0	54540	N.D.	1.140 #
9)	L2	AR-1221-2	3.979	3.237	92750	57368	2.700	3.504 #
10)	L2	AR-1221-3	4.039	3.308	176160	75566	1.647	1.380
11)	L3	AR-1232-1	4.039	3.308	176160	75566	1.961	1.680
12)	L3	AR-1232-2	0.000	4.049	0	75853	N.D.	1.876 #
13)	L3	AR-1232-3	4.830f	4.229	523614	109390	7.278	5.211 #
14)	L3	AR-1232-4	0.000	4.324	0	47606	N.D.	2.547 #
15)	L3	AR-1232-5	0.000	4.478	0	54540	N.D.	2.596 #
16)	L4	AR-1242-1	4.830f	4.040	523614	36119	5.619	0.675 #
17)	L4	AR-1242-2	4.830f	4.049	523614	75853	3.966	1.004 #
18)	L4	AR-1242-3	0.000	4.229	0	109390	N.D.	2.708 #
19)	L4	AR-1242-4	0.000	4.324	0	47606	N.D.	1.228 #
20)	L4	AR-1242-5	5.838	4.853	15715	48621	0.273	0.977 #
21)	L5	AR-1248-1	4.830f	4.040	523614	36119	7.484	0.926 #
22)	L5	AR-1248-2	0.000	4.270	0	87627	N.D.	1.601 #
23)	L5	AR-1248-3	0.000	4.324	0	47606	N.D.	0.854 #
24)	L5	AR-1248-4	5.838f	4.478	15715	54540	0.166	0.801 #
25)	L5	AR-1248-5	5.838	4.912	15715	71751	0.167	1.066 #
26)	L6	AR-1254-1	5.838f	4.853	15715	48621	0.162	0.465 #
27)	L6	AR-1254-2	0.000	5.005	0	179464	N.D.	1.971 #
28)	L6	AR-1254-3	6.400	5.425	27023	1333941	0.199	9.079 #
29)	L6	AR-1254-4	6.745	5.641f	124489	541169	1.279	5.950 #
30)	L6	AR-1254-5	0.000	6.120	0	381973	N.D.	2.905 #
31)	L7	AR-1260-1	0.000	5.569	0	663782	N.D.	7.955 #
32)	L7	AR-1260-2	6.919f	5.786	187015	128293	1.917	1.292 #
33)	L7	AR-1260-3	7.268	5.937	137722	378641	1.887	4.008 #
34)	L7	AR-1260-4	7.506	6.440	206692	42019	2.424	0.522 #
35)	L7	AR-1260-5	7.843	6.705	50532	417711	0.320	2.197 #
36)	L8	AR-1262-1	7.268	6.181	137722	173114	1.141	1.262
37)	L8	AR-1262-2	7.843	6.705	50532	417711	0.248	1.681 #
38)	L8	AR-1262-3	8.139	0.000	91416	0	0.643	N.D. #
39)	L8	AR-1262-4	8.240	7.075	467862	830607	4.246	4.512
40)	L8	AR-1262-5	8.842	7.627	25745	446798	0.336	5.171 #
41)	L9	AR-1268-1	8.139	7.075f	91416	830607	0.329	2.527 #
42)	L9	AR-1268-2	8.240	7.075	467862	830607	1.838	2.768 #
43)	L9	AR-1268-3	0.000	7.277	0	176727	N.D.	0.702 #
44)	L9	AR-1268-4	8.842	7.627	25745	446798	0.259	4.013 #

Data Path : Z:\pestpcbsrv\HPCHEM1\ECD_R\Data\PR071322\
 Data File : PR055266.D
 Signal(s) : Signal #1: ECD1A.ch Signal #2: ECD2B.ch
 Acq On : 13 Jul 2022 09:17
 Operator : AJ\MA
 Sample : HEXANE
 Misc :
 ALS Vial : 1 Sample Multiplier: 1

Instrument :
 ECD_R
 ClientSampleId :

Integration File signal 1: autoint1.e
 Integration File signal 2: autoint2.e
 Quant Time: Jul 14 03:25:29 2022
 Quant Method : Z:\pestpcbsrv\HPCHEM1\ECD_R\Method\PR062222CLP.M
 Quant Title : GC EXTRACTABLES
 QLast Update : Thu Jun 23 10:22:07 2022
 Response via : Initial Calibration
 Integrator: ChemStation

Volume Inj. : 1 µl
 Signal #1 Phase : ZB MR1 Signal #2 Phase: ZB MR2
 Signal #1 Info : 30Mx0.32mmx 0.5µm Signal #2 Info : 30M x 0.32mm x 0.25µm

	Compound	RT#1	RT#2	Resp#1	Resp#2	ng/ml	ng/ml
45)	L9 AR-1268-5	0.000	7.912	0	201747	N.D.	0.254 #

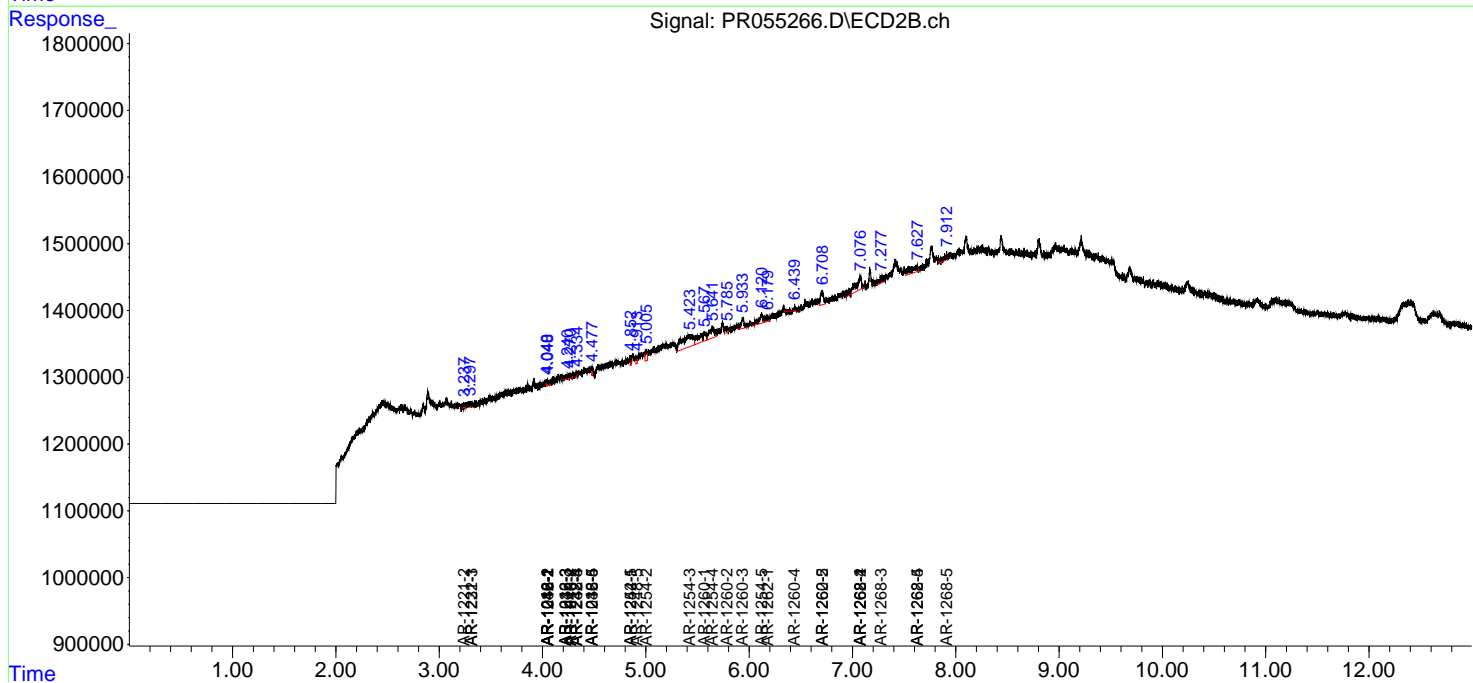
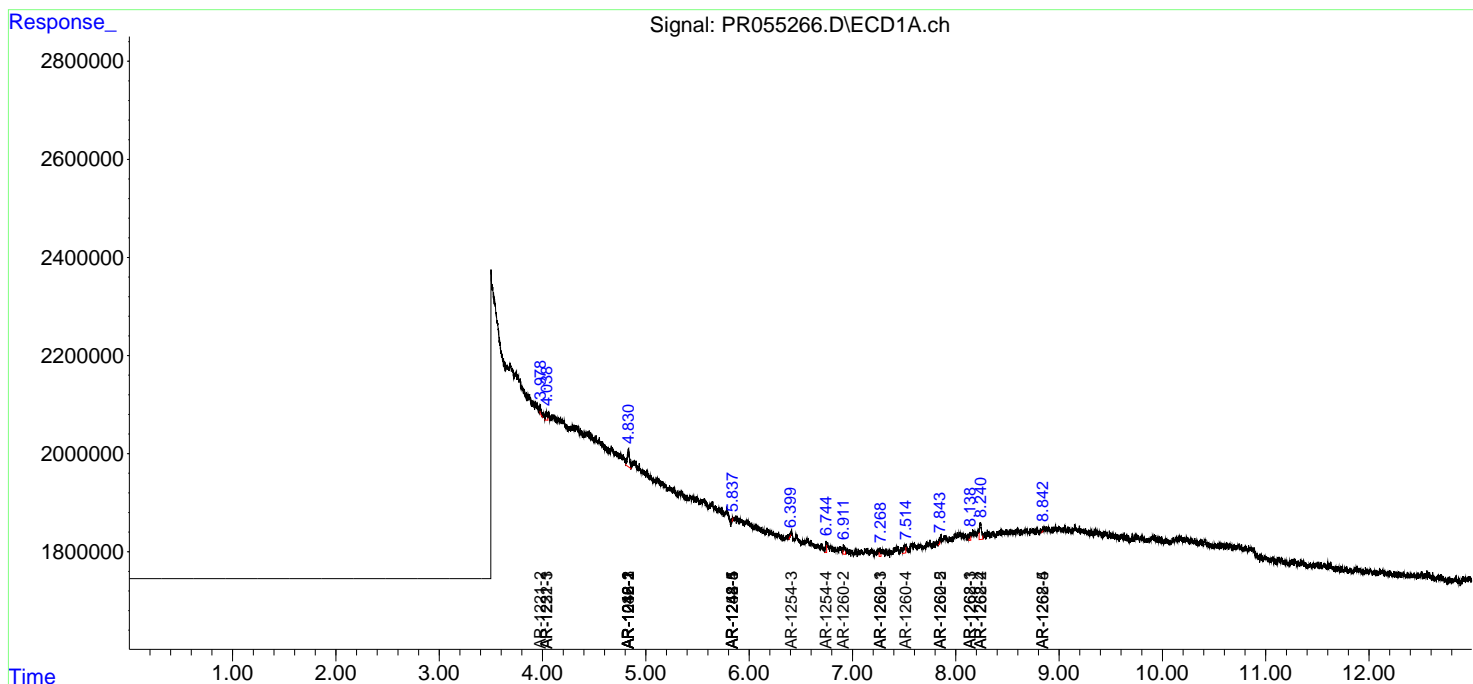
(f)=RT Delta > 1/2 Window (#)=Amounts differ by > 25% (m)=manual int.

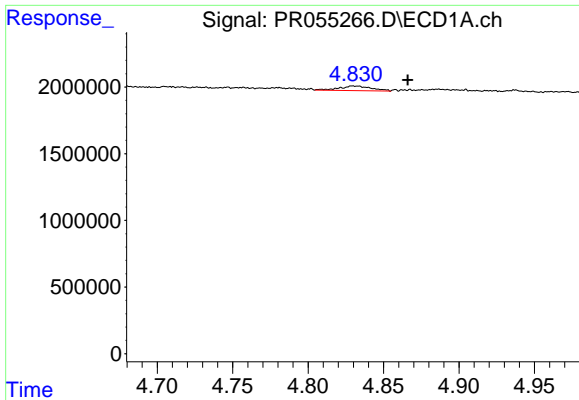
Data Path : Z:\pestpcbsrv\HPCHEM1\ECD_R\Data\PR071322\
 Data File : PR055266.D
 Signal(s) : Signal #1: ECD1A.ch Signal #2: ECD2B.ch
 Acq On : 13 Jul 2022 09:17
 Operator : AJ\MA
 Sample : HEXANE
 Misc :
 ALS Vial : 1 Sample Multiplier: 1

Instrument :
 ECD_R
 ClientSampleId :

Integration File signal 1: autoint1.e
 Integration File signal 2: autoint2.e
 Quant Time: Jul 14 03:25:29 2022
 Quant Method : Z:\pestpcbsrv\HPCHEM1\ECD_R\Method\PR062222CLP.M
 Quant Title : GC EXTRACTABLES
 QLast Update : Thu Jun 23 10:22:07 2022
 Response via : Initial Calibration
 Integrator: ChemStation

Volume Inj. : 1 µl
 Signal #1 Phase : ZB MR1 Signal #2 Phase: ZB MR2
 Signal #1 Info : 30Mx0.32mmx 0.5µm Signal #2 Info : 30M x 0.32mm x 0.25µm

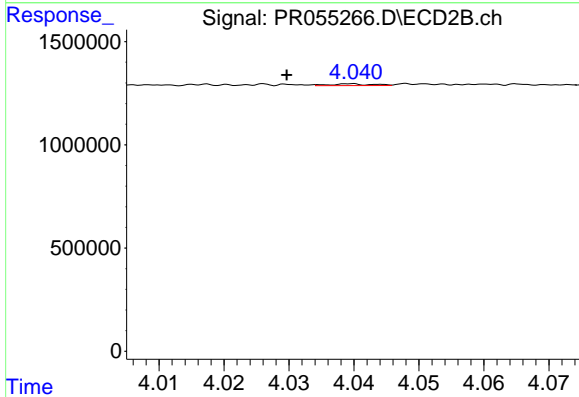




#3 AR-1016-1

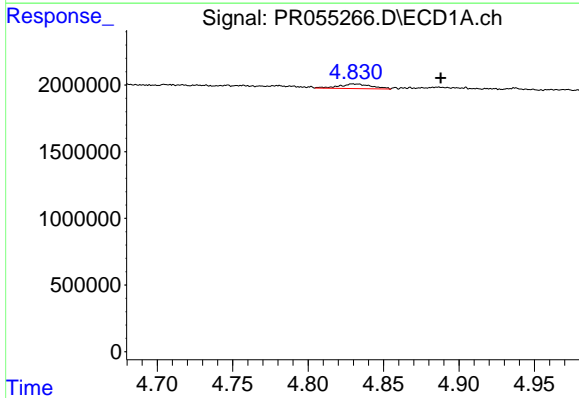
R.T.: 4.830 min
 Delta R.T.: -0.036 min
 Response: 523614
 Conc: 4.85 ng/ml

Instrument :
 ECD_R
 ClientSampleId :



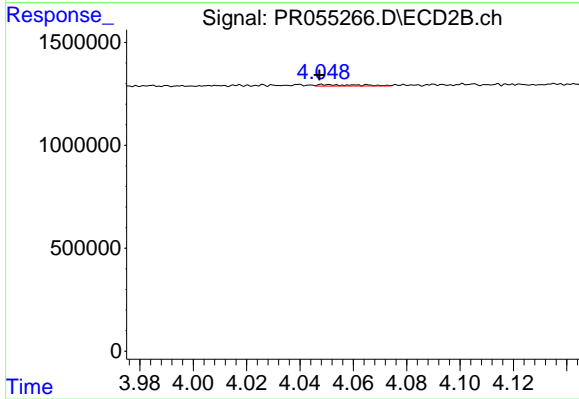
#3 AR-1016-1

R.T.: 4.040 min
 Delta R.T.: 0.010 min
 Response: 36119
 Conc: 0.59 ng/ml



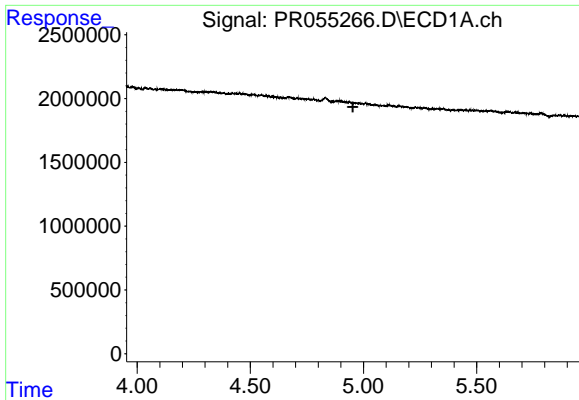
#4 AR-1016-2

R.T.: 4.830 min
 Delta R.T.: -0.058 min
 Response: 523614
 Conc: 3.42 ng/ml



#4 AR-1016-2

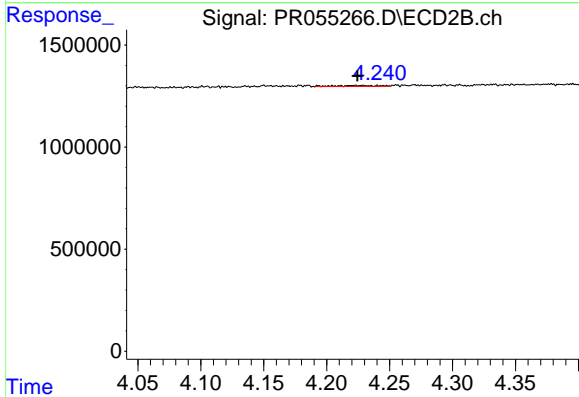
R.T.: 4.049 min
 Delta R.T.: 0.002 min
 Response: 75853
 Conc: 0.87 ng/ml



#5 AR-1016-3

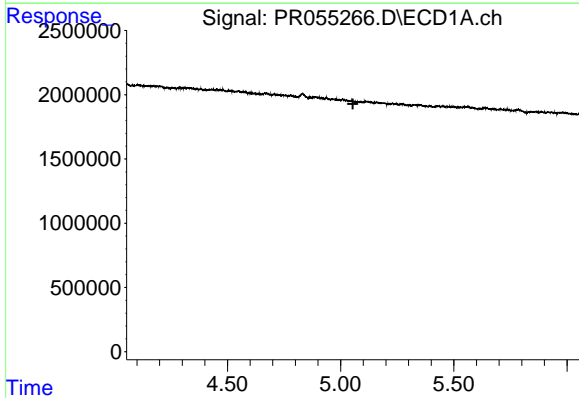
R.T.: 0.000 min
 Exp R.T.: 4.953 min
 Response: 0
 Conc: N.D.

Instrument :
 ECD_R
 ClientSampleId :



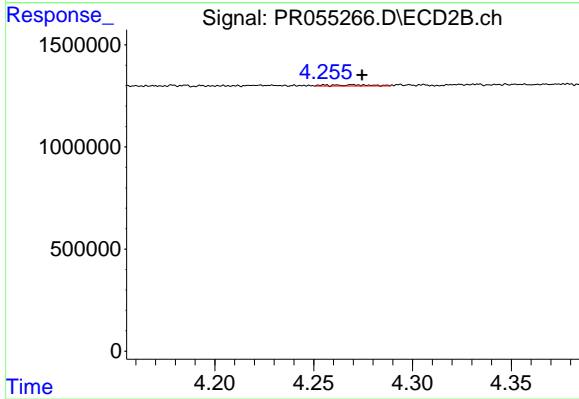
#5 AR-1016-3

R.T.: 4.229 min
 Delta R.T.: 0.005 min
 Response: 109390
 Conc: 2.36 ng/ml



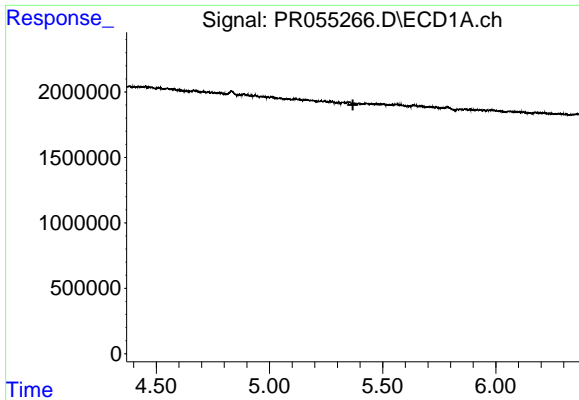
#6 AR-1016-4

R.T.: 0.000 min
 Exp R.T.: 5.054 min
 Response: 0
 Conc: N.D.



#6 AR-1016-4

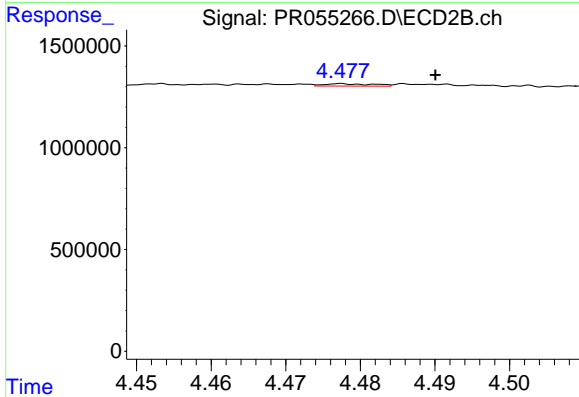
R.T.: 4.270 min
 Delta R.T.: -0.005 min
 Response: 87627
 Conc: 2.31 ng/ml



#7 AR-1016-5

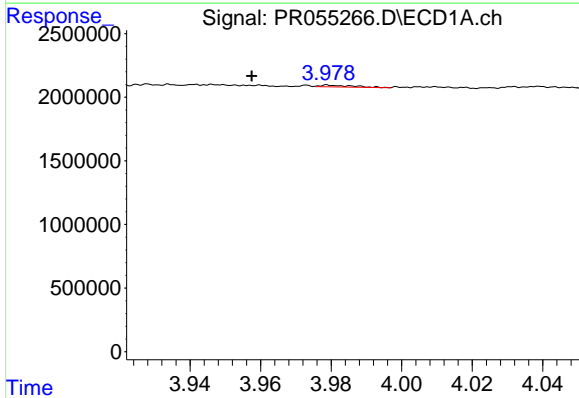
R.T.: 0.000 min
 Exp R.T.: 5.368 min
 Response: 0
 Conc: N.D.

Instrument :
 ECD_R
 ClientSampleId :



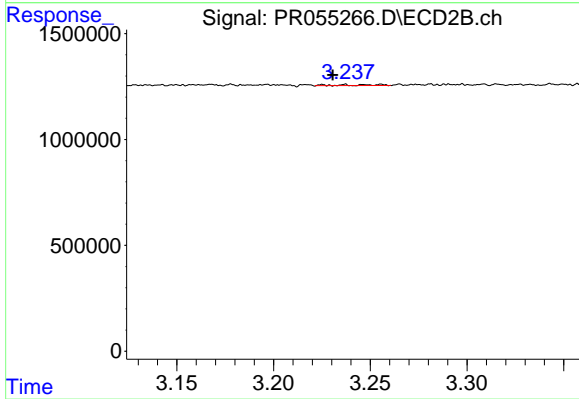
#7 AR-1016-5

R.T.: 4.478 min
 Delta R.T.: -0.012 min
 Response: 54540
 Conc: 1.14 ng/ml



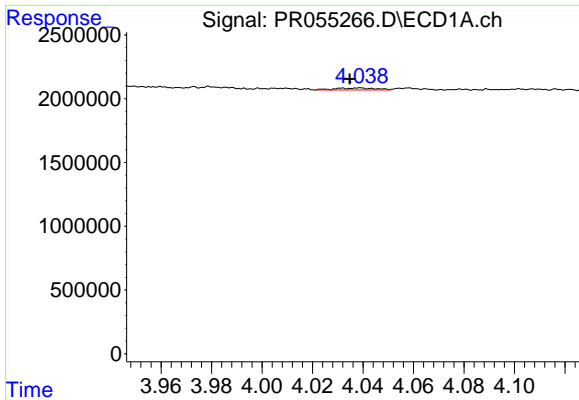
#9 AR-1221-2

R.T.: 3.979 min
 Delta R.T.: 0.021 min
 Response: 92750
 Conc: 2.70 ng/ml



#9 AR-1221-2

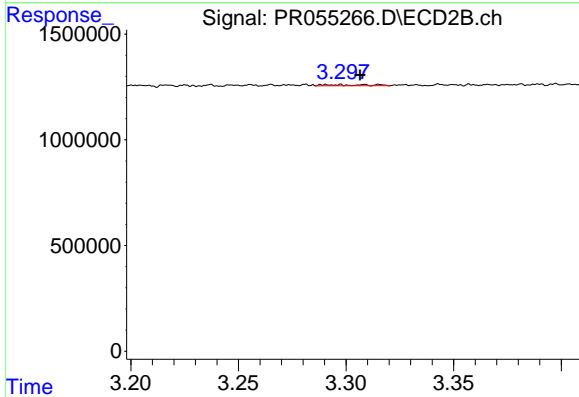
R.T.: 3.237 min
 Delta R.T.: 0.006 min
 Response: 57368
 Conc: 3.50 ng/ml



#10 AR-1221-3

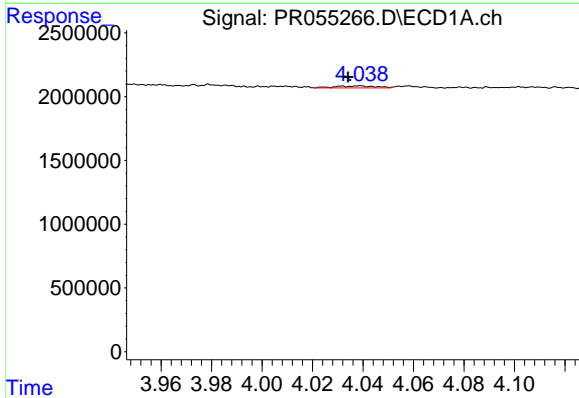
R.T.: 4.039 min
 Delta R.T.: 0.004 min
 Response: 176160
 Conc: 1.65 ng/ml

Instrument :
 ECD_R
 ClientSampleId :



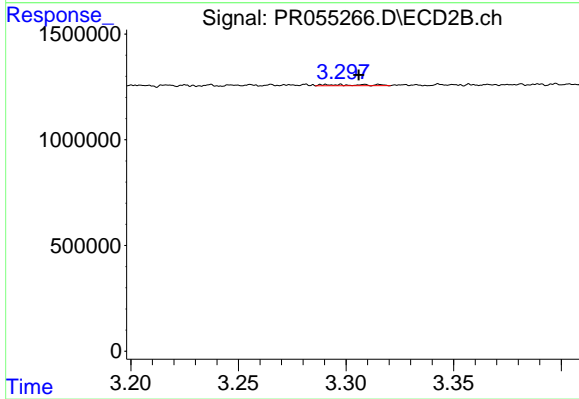
#10 AR-1221-3

R.T.: 3.308 min
 Delta R.T.: 0.002 min
 Response: 75566
 Conc: 1.38 ng/ml



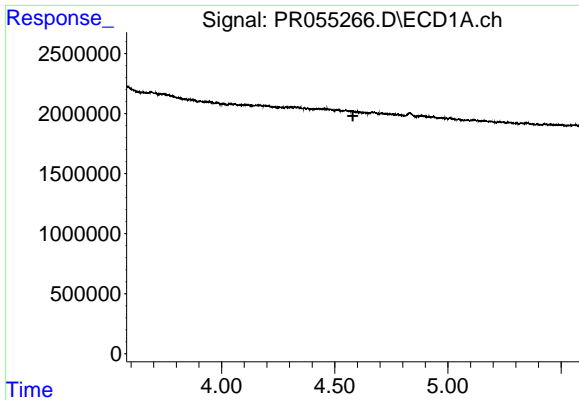
#11 AR-1232-1

R.T.: 4.039 min
 Delta R.T.: 0.005 min
 Response: 176160
 Conc: 1.96 ng/ml



#11 AR-1232-1

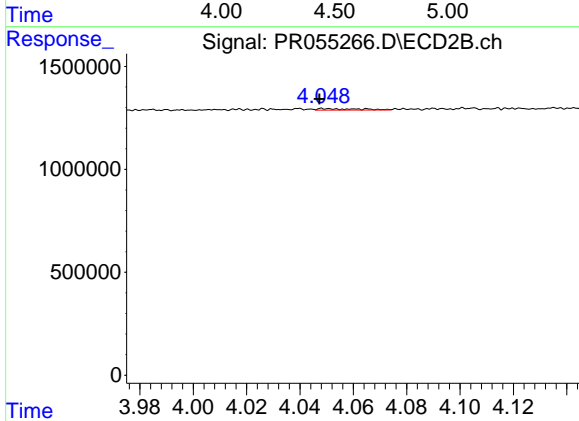
R.T.: 3.308 min
 Delta R.T.: 0.002 min
 Response: 75566
 Conc: 1.68 ng/ml



#12 AR-1232-2

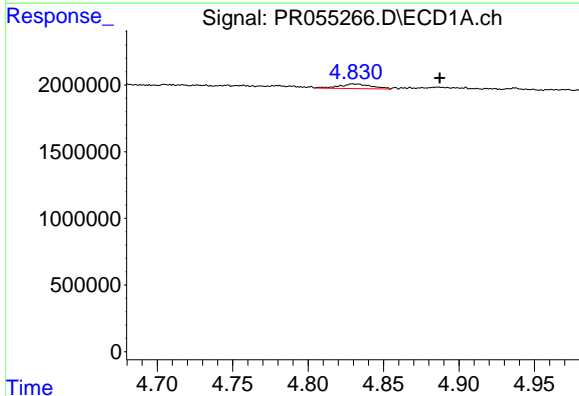
R.T.: 0.000 min
 Exp R.T.: 4.580 min
 Response: 0
 Conc: N.D.

Instrument :
 ECD_R
 ClientSampleId :



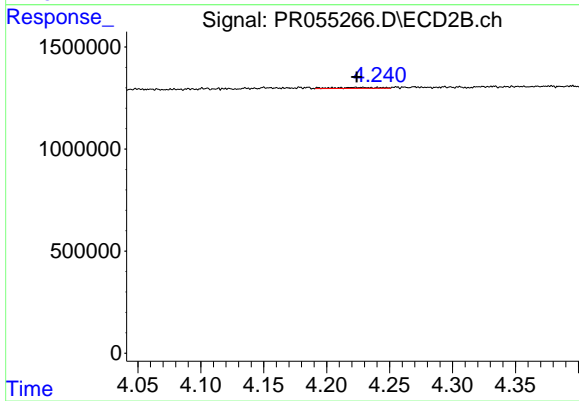
#12 AR-1232-2

R.T.: 4.049 min
 Delta R.T.: 0.002 min
 Response: 75853
 Conc: 1.88 ng/ml



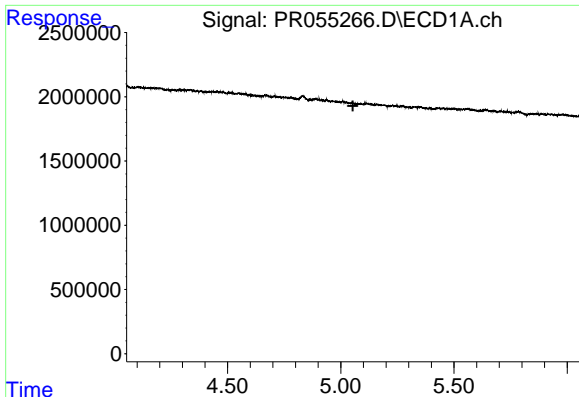
#13 AR-1232-3

R.T.: 4.830 min
 Delta R.T.: -0.058 min
 Response: 523614
 Conc: 7.28 ng/ml



#13 AR-1232-3

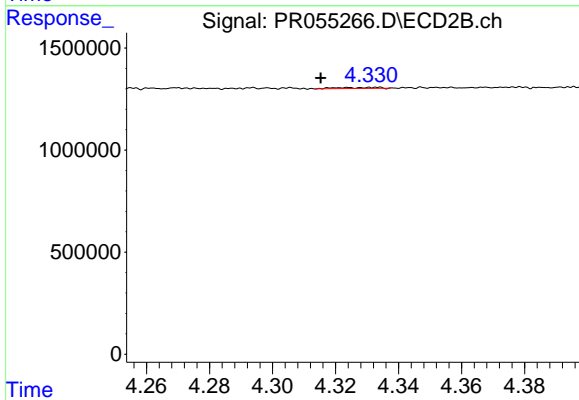
R.T.: 4.229 min
 Delta R.T.: 0.005 min
 Response: 109390
 Conc: 5.21 ng/ml



#14 AR-1232-4

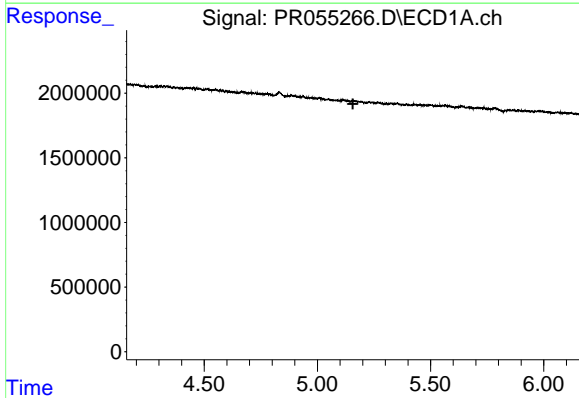
R.T.: 0.000 min
 Exp R.T.: 5.054 min
 Response: 0
 Conc: N.D.

Instrument :
 ECD_R
 ClientSampleId :



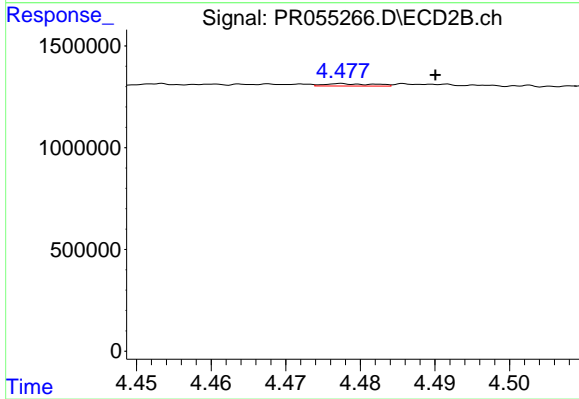
#14 AR-1232-4

R.T.: 4.324 min
 Delta R.T.: 0.009 min
 Response: 47606
 Conc: 2.55 ng/ml



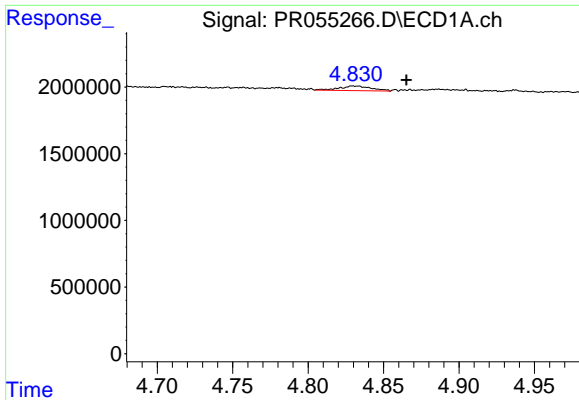
#15 AR-1232-5

R.T.: 0.000 min
 Exp R.T.: 5.157 min
 Response: 0
 Conc: N.D.



#15 AR-1232-5

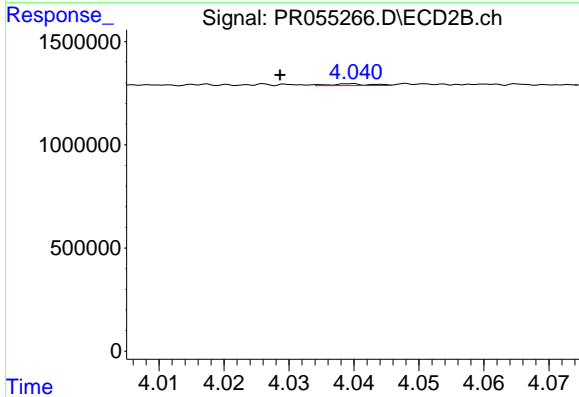
R.T.: 4.478 min
 Delta R.T.: -0.013 min
 Response: 54540
 Conc: 2.60 ng/ml



#16 AR-1242-1

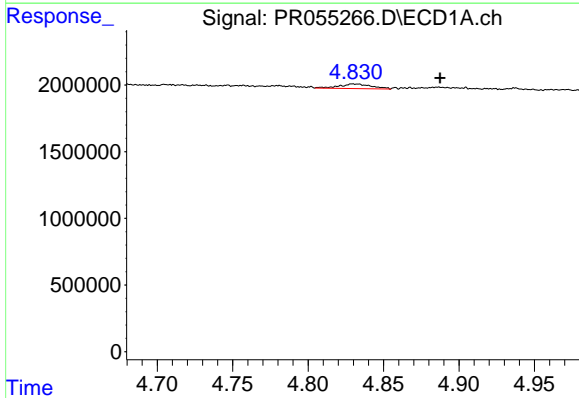
R.T.: 4.830 min
 Delta R.T.: -0.036 min
 Response: 523614
 Conc: 5.62 ng/ml

Instrument :
 ECD_R
 ClientSampleId :



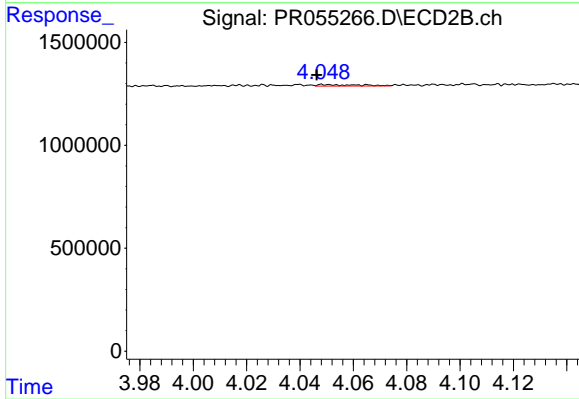
#16 AR-1242-1

R.T.: 4.040 min
 Delta R.T.: 0.011 min
 Response: 36119
 Conc: 0.67 ng/ml



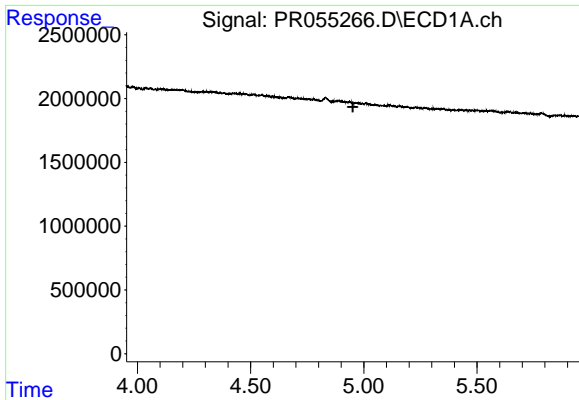
#17 AR-1242-2

R.T.: 4.830 min
 Delta R.T.: -0.058 min
 Response: 523614
 Conc: 3.97 ng/ml



#17 AR-1242-2

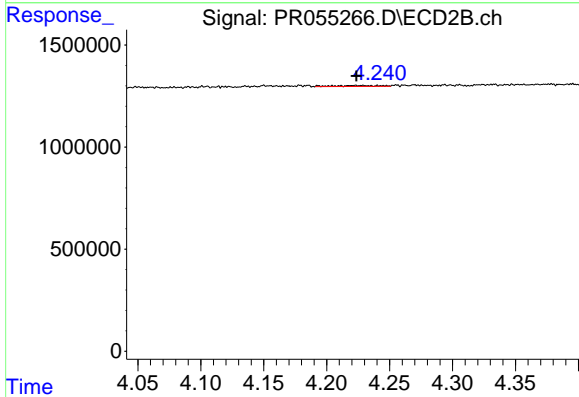
R.T.: 4.049 min
 Delta R.T.: 0.003 min
 Response: 75853
 Conc: 1.00 ng/ml



#18 AR-1242-3

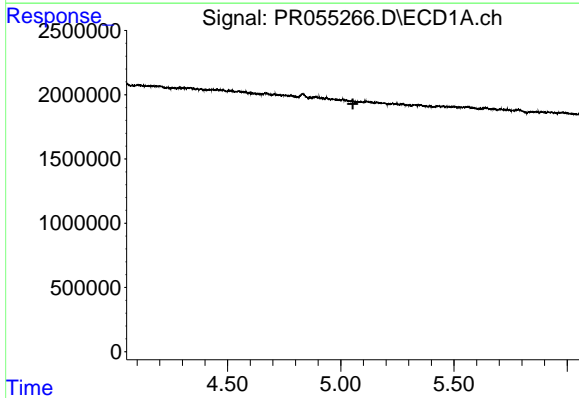
R.T.: 0.000 min
 Exp R.T.: 4.952 min
 Response: 0
 Conc: N.D.

Instrument :
 ECD_R
 ClientSampleId :



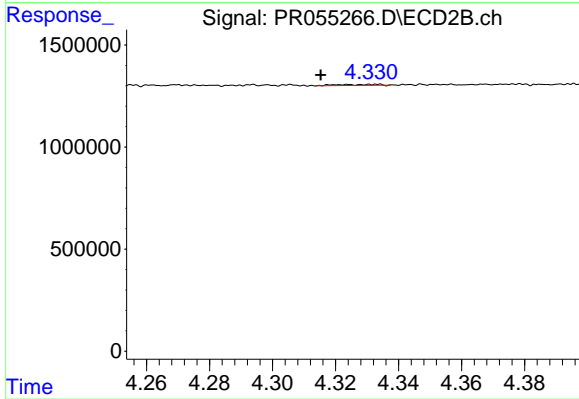
#18 AR-1242-3

R.T.: 4.229 min
 Delta R.T.: 0.005 min
 Response: 109390
 Conc: 2.71 ng/ml



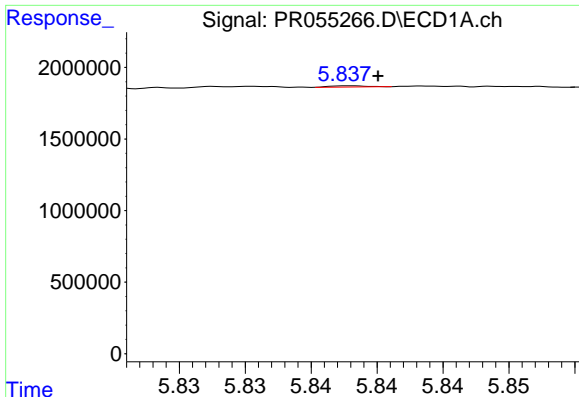
#19 AR-1242-4

R.T.: 0.000 min
 Exp R.T.: 5.054 min
 Response: 0
 Conc: N.D.



#19 AR-1242-4

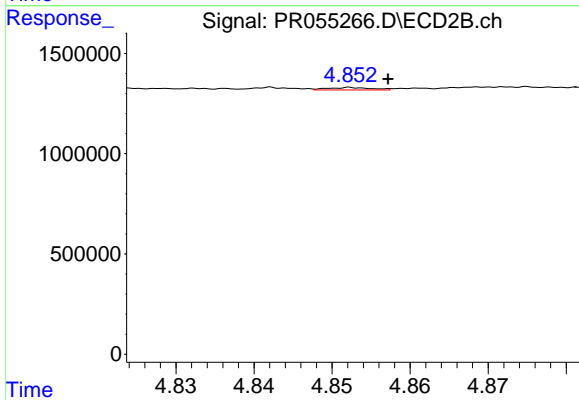
R.T.: 4.324 min
 Delta R.T.: 0.009 min
 Response: 47606
 Conc: 1.23 ng/ml



#20 AR-1242-5

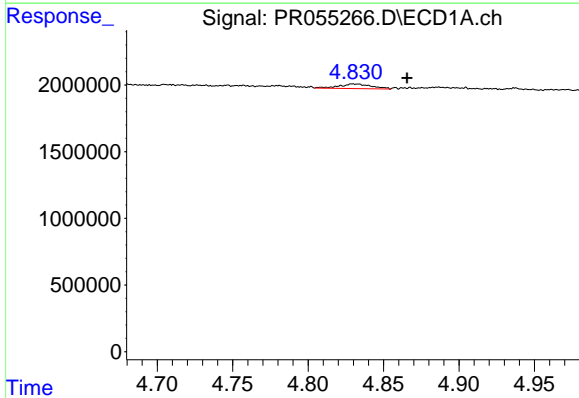
R.T.: 5.838 min
 Delta R.T.: -0.002 min
 Response: 15715
 Conc: 0.27 ng/ml

Instrument :
 ECD_R
 ClientSampleId :



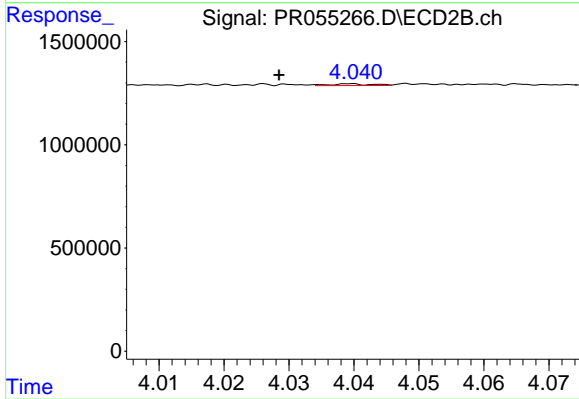
#20 AR-1242-5

R.T.: 4.853 min
 Delta R.T.: -0.005 min
 Response: 48621
 Conc: 0.98 ng/ml



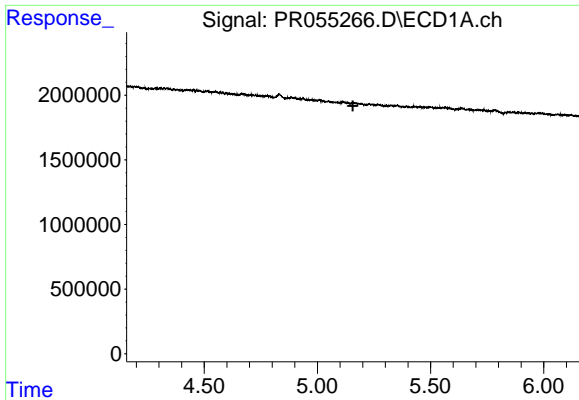
#21 AR-1248-1

R.T.: 4.830 min
 Delta R.T.: -0.036 min
 Response: 523614
 Conc: 7.48 ng/ml



#21 AR-1248-1

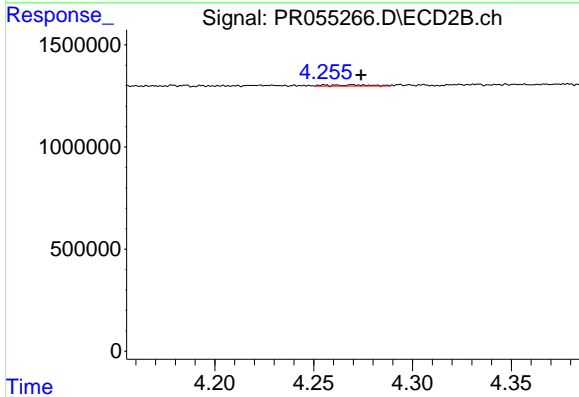
R.T.: 4.040 min
 Delta R.T.: 0.011 min
 Response: 36119
 Conc: 0.93 ng/ml



#22 AR-1248-2

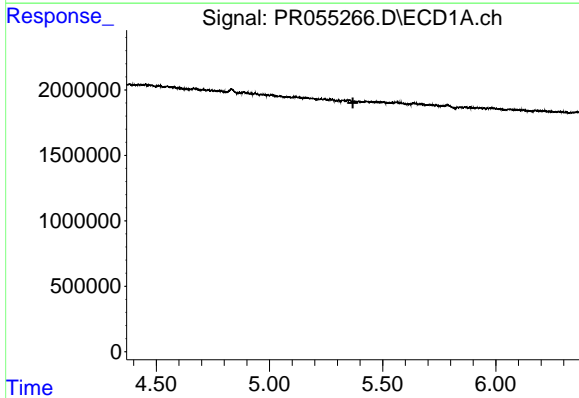
R.T.: 0.000 min
 Exp R.T.: 5.157 min
 Response: 0
 Conc: N.D.

Instrument :
 ECD_R
 ClientSampleId :



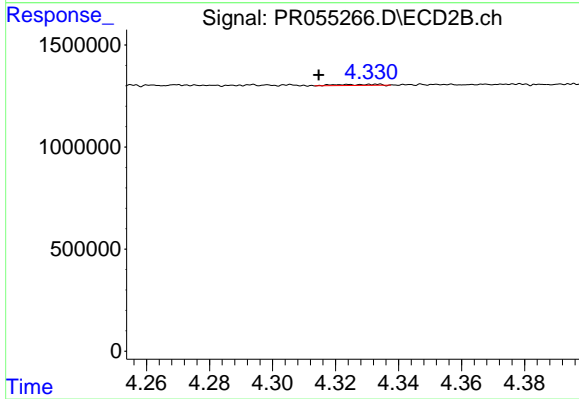
#22 AR-1248-2

R.T.: 4.270 min
 Delta R.T.: -0.004 min
 Response: 87627
 Conc: 1.60 ng/ml



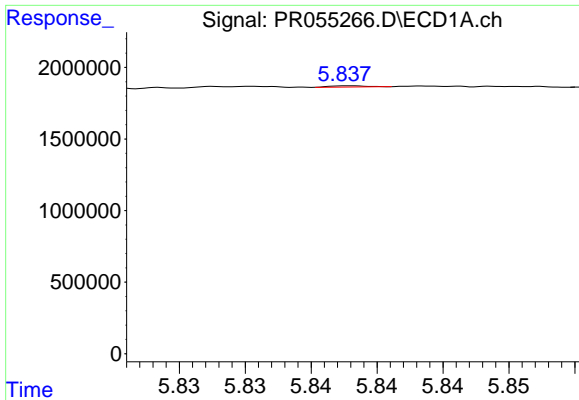
#23 AR-1248-3

R.T.: 0.000 min
 Exp R.T.: 5.369 min
 Response: 0
 Conc: N.D.



#23 AR-1248-3

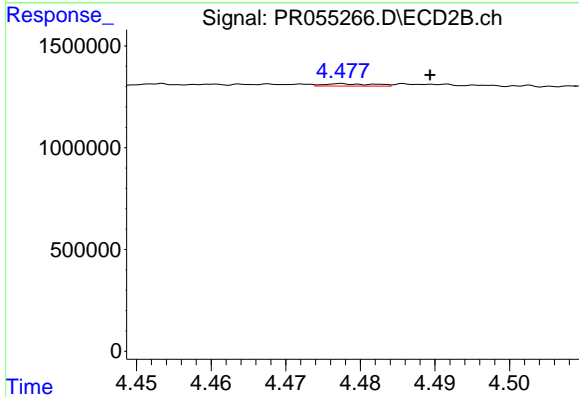
R.T.: 4.324 min
 Delta R.T.: 0.009 min
 Response: 47606
 Conc: 0.85 ng/ml



#24 AR-1248-4

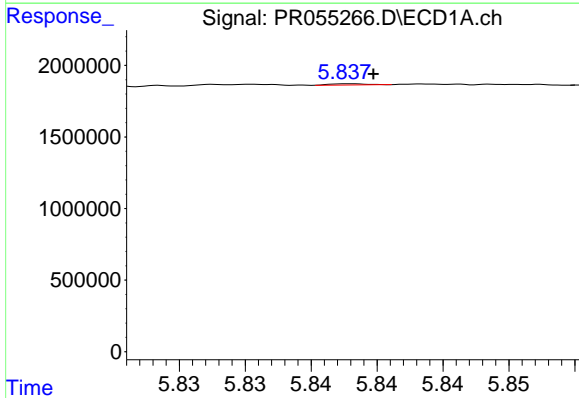
R.T.: 5.838 min
 Delta R.T.: 0.038 min
 Response: 15715
 Conc: 0.17 ng/ml

Instrument :
 ECD_R
 ClientSampleId :



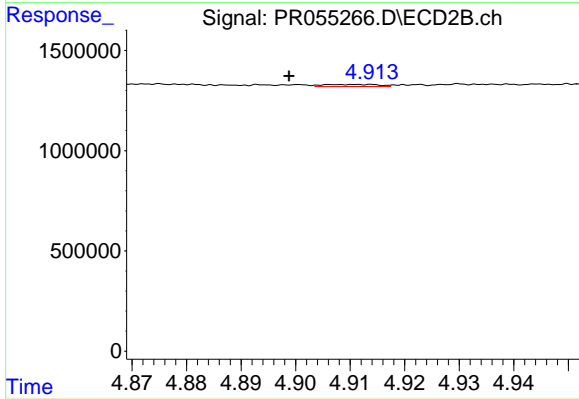
#24 AR-1248-4

R.T.: 4.478 min
 Delta R.T.: -0.012 min
 Response: 54540
 Conc: 0.80 ng/ml



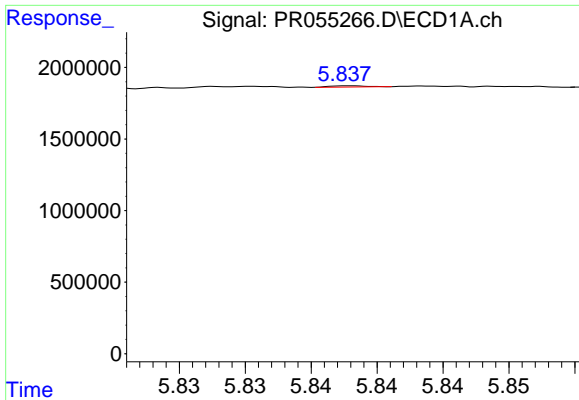
#25 AR-1248-5

R.T.: 5.838 min
 Delta R.T.: -0.002 min
 Response: 15715
 Conc: 0.17 ng/ml



#25 AR-1248-5

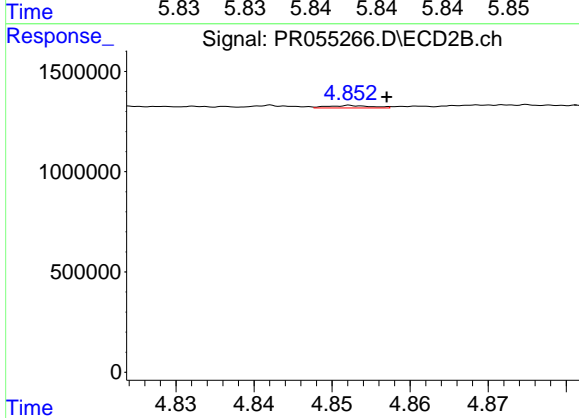
R.T.: 4.912 min
 Delta R.T.: 0.014 min
 Response: 71751
 Conc: 1.07 ng/ml



#26 AR-1254-1

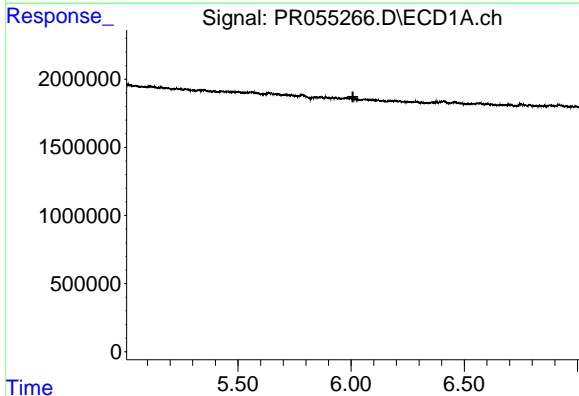
R.T.: 5.838 min
 Delta R.T.: 0.067 min
 Response: 15715
 Conc: 0.16 ng/ml

Instrument :
 ECD_R
 ClientSampleId :



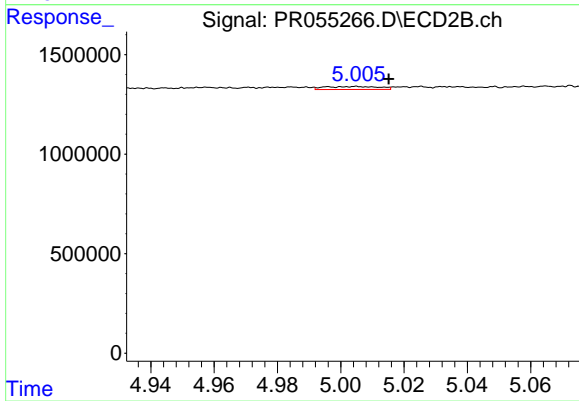
#26 AR-1254-1

R.T.: 4.853 min
 Delta R.T.: -0.005 min
 Response: 48621
 Conc: 0.46 ng/ml



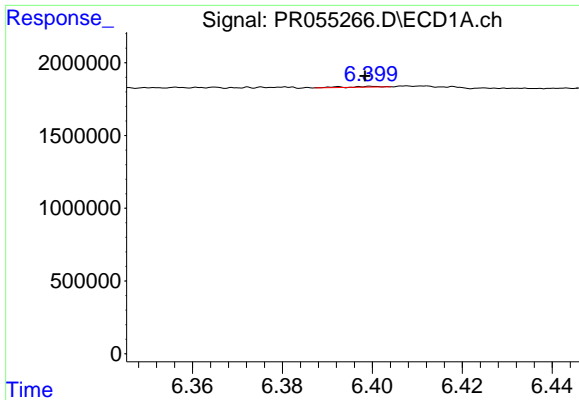
#27 AR-1254-2

R.T.: 0.000 min
 Exp R.T. : 6.008 min
 Response: 0
 Conc: N.D.



#27 AR-1254-2

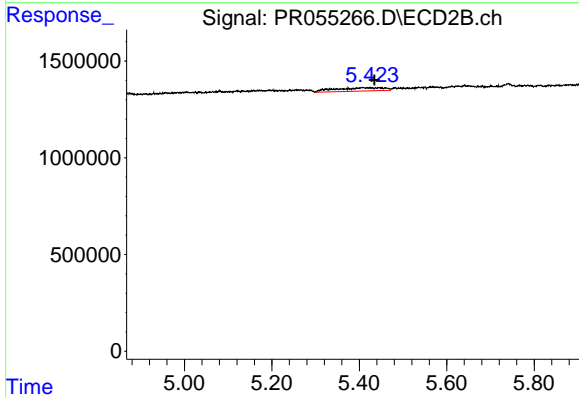
R.T.: 5.005 min
 Delta R.T.: -0.010 min
 Response: 179464
 Conc: 1.97 ng/ml



#28 AR-1254-3

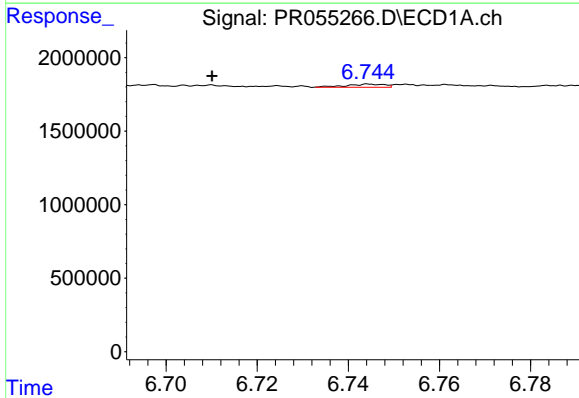
R.T.: 6.400 min
 Delta R.T.: 0.001 min
 Response: 27023
 Conc: 0.20 ng/ml

Instrument :
 ECD_R
 ClientSampleId :



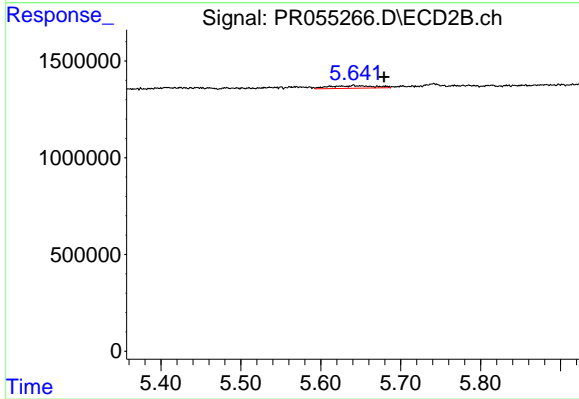
#28 AR-1254-3

R.T.: 5.425 min
 Delta R.T.: -0.009 min
 Response: 1333941
 Conc: 9.08 ng/ml



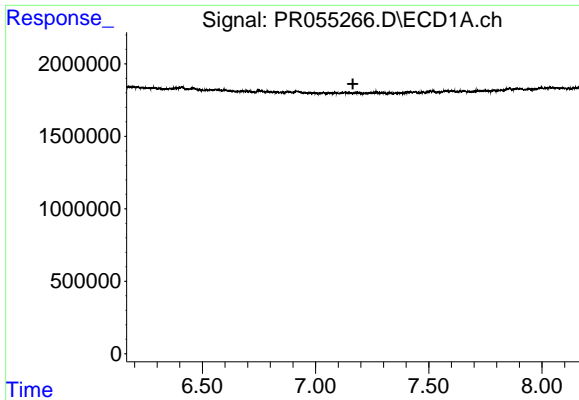
#29 AR-1254-4

R.T.: 6.745 min
 Delta R.T.: 0.035 min
 Response: 124489
 Conc: 1.28 ng/ml



#29 AR-1254-4

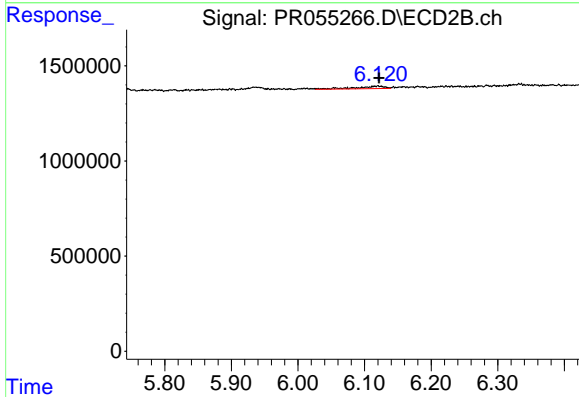
R.T.: 5.641 min
 Delta R.T.: -0.038 min
 Response: 541169
 Conc: 5.95 ng/ml



#30 AR-1254-5

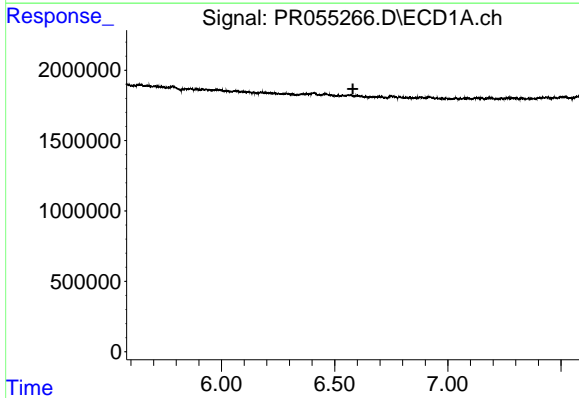
R.T.: 0.000 min
 Exp R.T. : 7.165 min
 Response: 0
 Conc: N.D.

Instrument :
 ECD_R
 ClientSampleId :



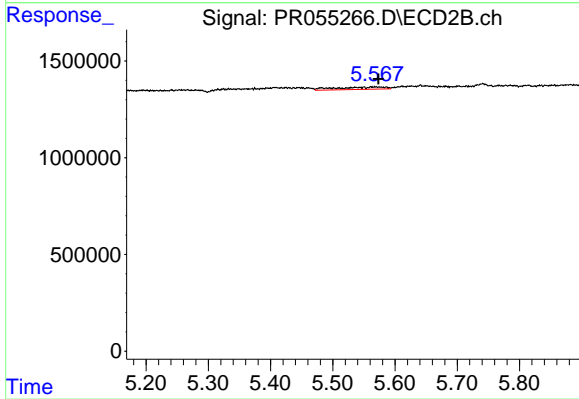
#30 AR-1254-5

R.T.: 6.120 min
 Delta R.T.: -0.002 min
 Response: 381973
 Conc: 2.90 ng/ml



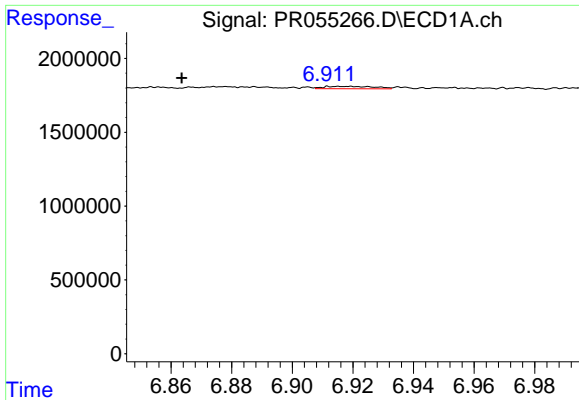
#31 AR-1260-1

R.T.: 0.000 min
 Exp R.T. : 6.581 min
 Response: 0
 Conc: N.D.



#31 AR-1260-1

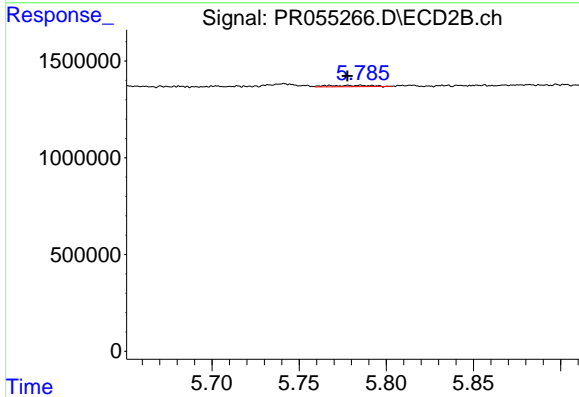
R.T.: 5.569 min
 Delta R.T.: -0.004 min
 Response: 663782
 Conc: 7.96 ng/ml



#32 AR-1260-2

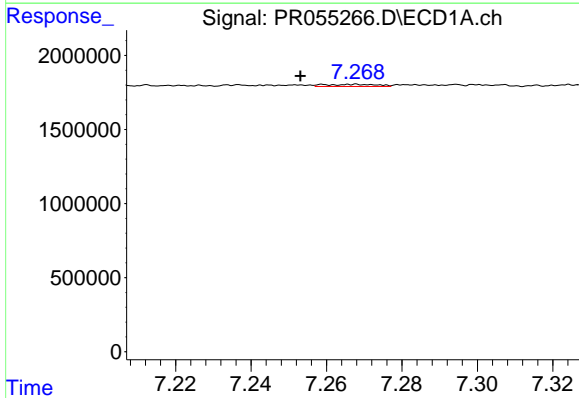
R.T.: 6.919 min
 Delta R.T.: 0.056 min
 Response: 187015
 Conc: 1.92 ng/ml

Instrument :
 ECD_R
 ClientSampleId :



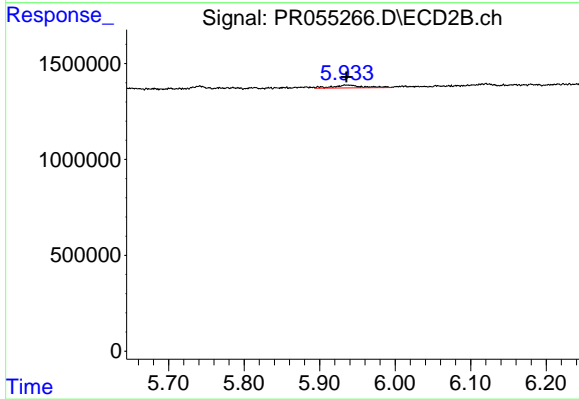
#32 AR-1260-2

R.T.: 5.786 min
 Delta R.T.: 0.008 min
 Response: 128293
 Conc: 1.29 ng/ml



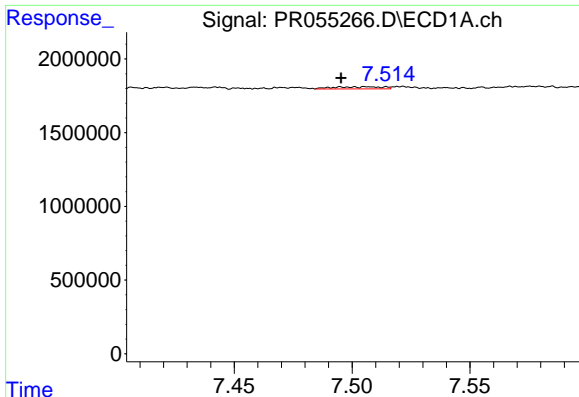
#33 AR-1260-3

R.T.: 7.268 min
 Delta R.T.: 0.015 min
 Response: 137722
 Conc: 1.89 ng/ml



#33 AR-1260-3

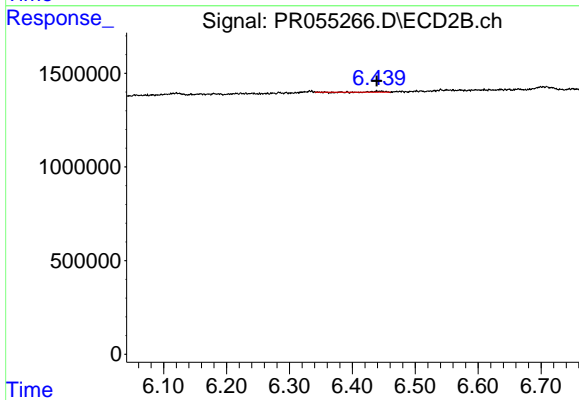
R.T.: 5.937 min
 Delta R.T.: 0.001 min
 Response: 378641
 Conc: 4.01 ng/ml



#34 AR-1260-4

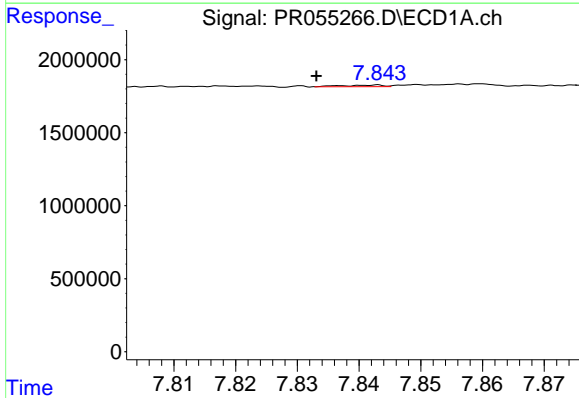
R.T.: 7.506 min
 Delta R.T.: 0.010 min
 Response: 206692
 Conc: 2.42 ng/ml

Instrument :
 ECD_R
 ClientSampleId :



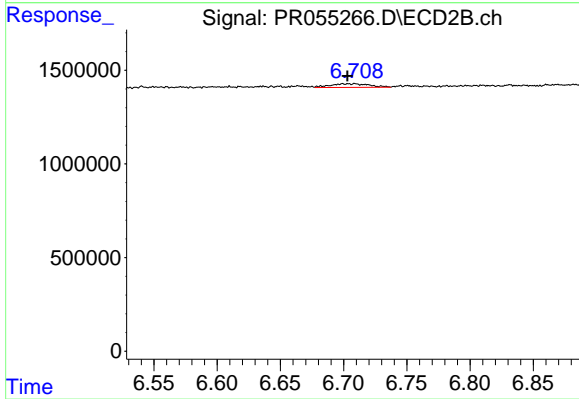
#34 AR-1260-4

R.T.: 6.440 min
 Delta R.T.: 0.001 min
 Response: 42019
 Conc: 0.52 ng/ml



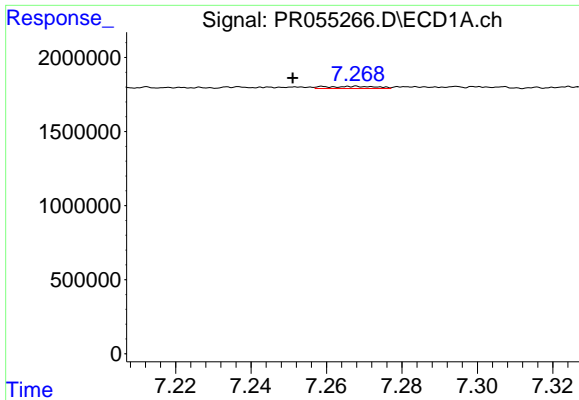
#35 AR-1260-5

R.T.: 7.843 min
 Delta R.T.: 0.010 min
 Response: 50532
 Conc: 0.32 ng/ml



#35 AR-1260-5

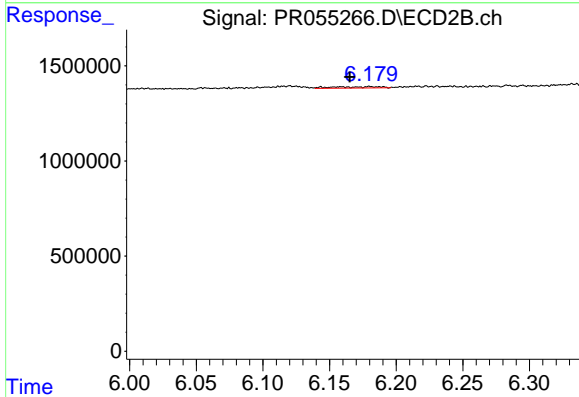
R.T.: 6.705 min
 Delta R.T.: 0.002 min
 Response: 417711
 Conc: 2.20 ng/ml



#36 AR-1262-1

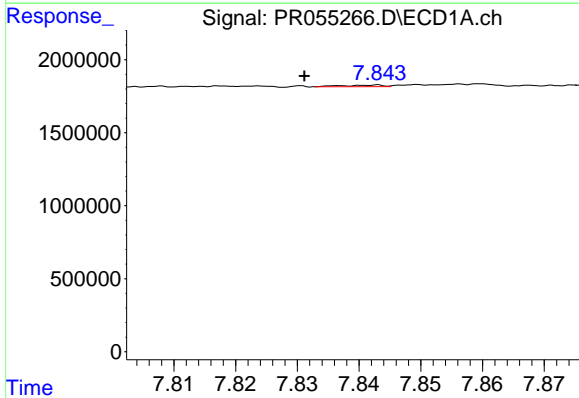
R.T.: 7.268 min
 Delta R.T.: 0.017 min
 Response: 137722
 Conc: 1.14 ng/ml

Instrument :
 ECD_R
 ClientSampleId :



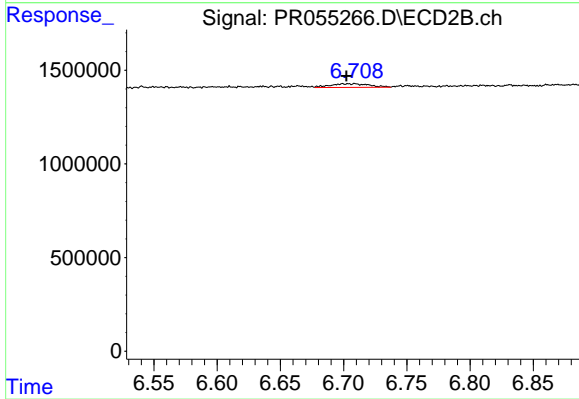
#36 AR-1262-1

R.T.: 6.181 min
 Delta R.T.: 0.016 min
 Response: 173114
 Conc: 1.26 ng/ml



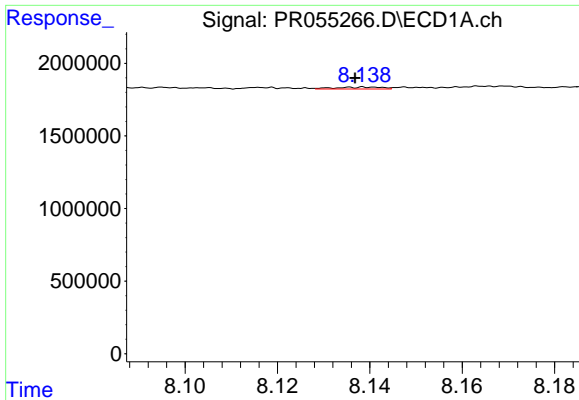
#37 AR-1262-2

R.T.: 7.843 min
 Delta R.T.: 0.012 min
 Response: 50532
 Conc: 0.25 ng/ml



#37 AR-1262-2

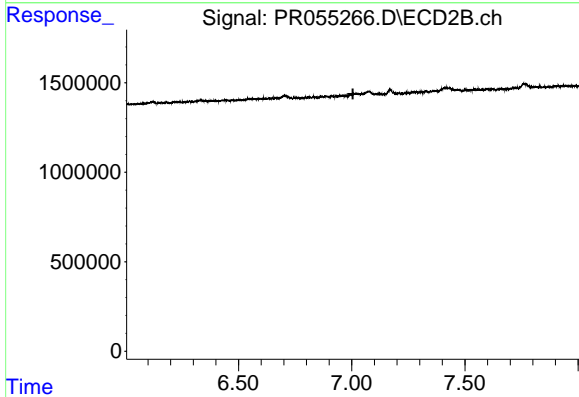
R.T.: 6.705 min
 Delta R.T.: 0.002 min
 Response: 417711
 Conc: 1.68 ng/ml



#38 AR-1262-3

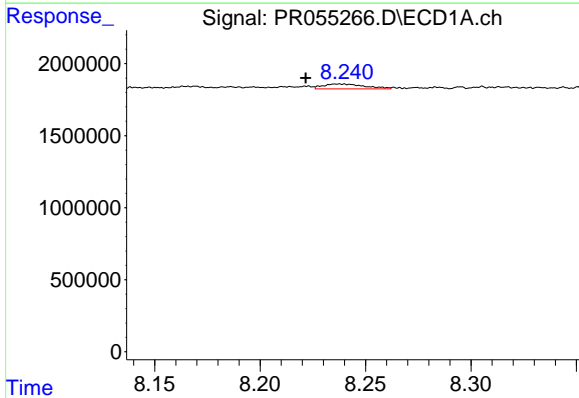
R.T.: 8.139 min
 Delta R.T.: 0.002 min
 Response: 91416
 Conc: 0.64 ng/ml

Instrument :
 ECD_R
 ClientSampleId :



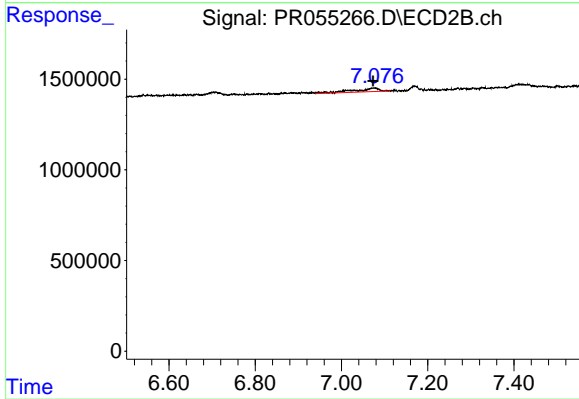
#38 AR-1262-3

R.T.: 0.000 min
 Exp R.T. : 7.005 min
 Response: 0
 Conc: N.D.



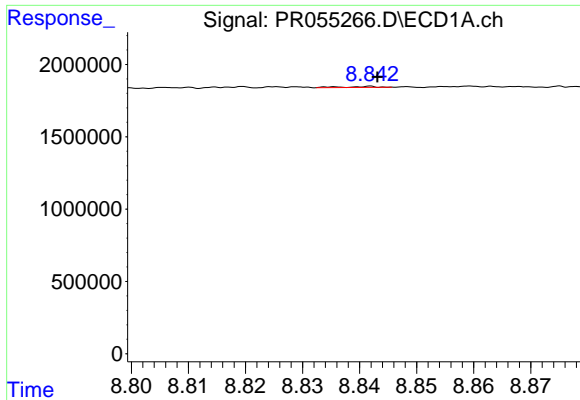
#39 AR-1262-4

R.T.: 8.240 min
 Delta R.T.: 0.018 min
 Response: 467862
 Conc: 4.25 ng/ml



#39 AR-1262-4

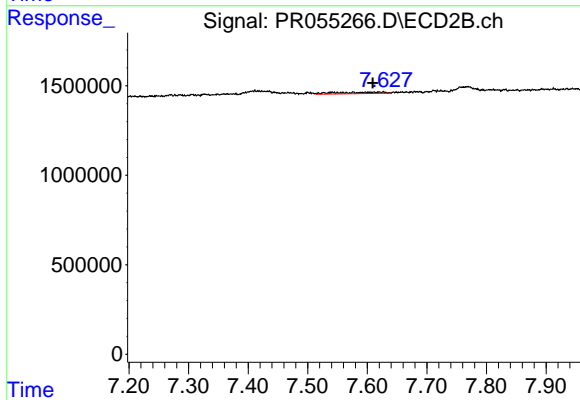
R.T.: 7.075 min
 Delta R.T.: 0.002 min
 Response: 830607
 Conc: 4.51 ng/ml



#40 AR-1262-5

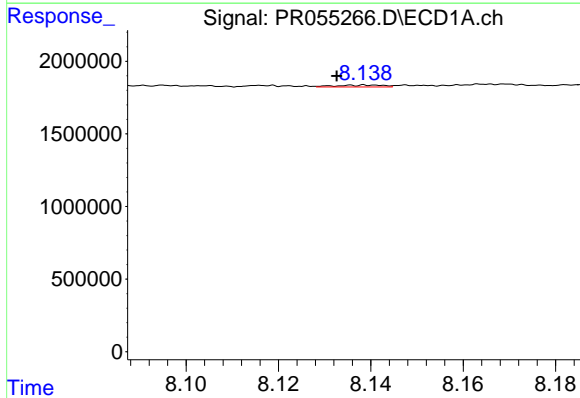
R.T.: 8.842 min
 Delta R.T.: -0.001 min
 Response: 25745
 Conc: 0.34 ng/ml

Instrument :
 ECD_R
 ClientSampleId :



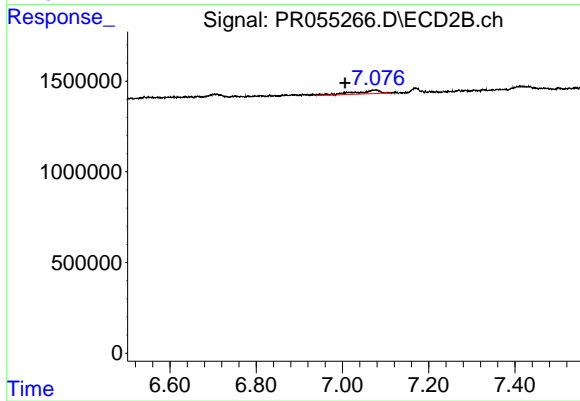
#40 AR-1262-5

R.T.: 7.627 min
 Delta R.T.: 0.018 min
 Response: 446798
 Conc: 5.17 ng/ml



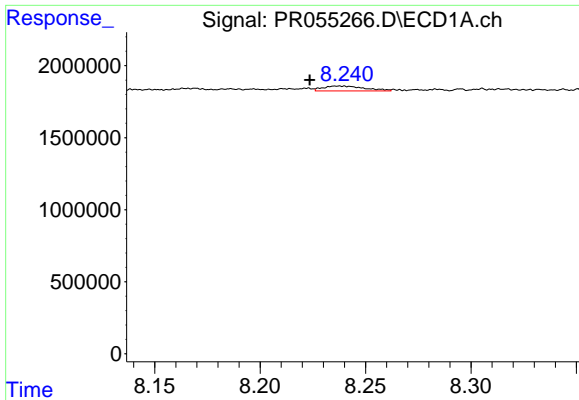
#41 AR-1268-1

R.T.: 8.139 min
 Delta R.T.: 0.006 min
 Response: 91416
 Conc: 0.33 ng/ml



#41 AR-1268-1

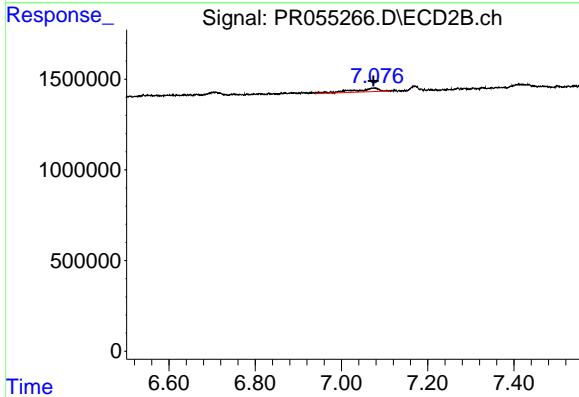
R.T.: 7.075 min
 Delta R.T.: 0.070 min
 Response: 830607
 Conc: 2.53 ng/ml



#42 AR-1268-2

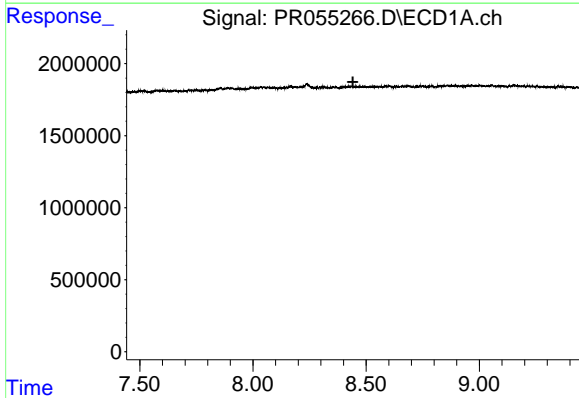
R.T.: 8.240 min
 Delta R.T.: 0.016 min
 Response: 467862
 Conc: 1.84 ng/ml

Instrument :
 ECD_R
 ClientSampleId :



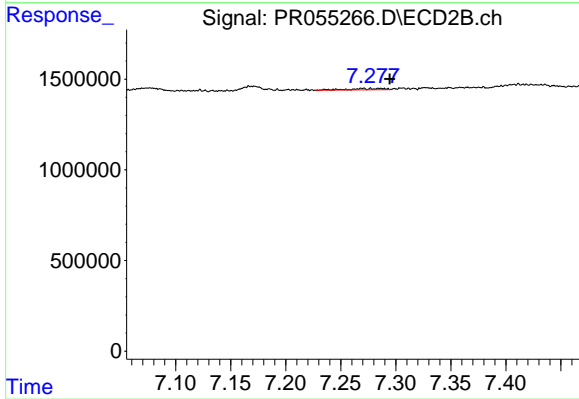
#42 AR-1268-2

R.T.: 7.075 min
 Delta R.T.: 0.000 min
 Response: 830607
 Conc: 2.77 ng/ml



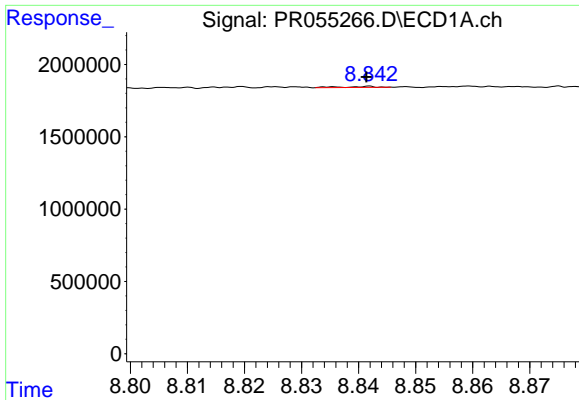
#43 AR-1268-3

R.T.: 0.000 min
 Exp R.T. : 8.441 min
 Response: 0
 Conc: N.D.



#43 AR-1268-3

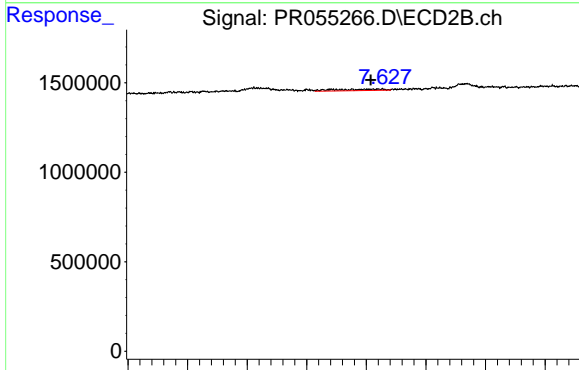
R.T.: 7.277 min
 Delta R.T.: -0.017 min
 Response: 176727
 Conc: 0.70 ng/ml



#44 AR-1268-4

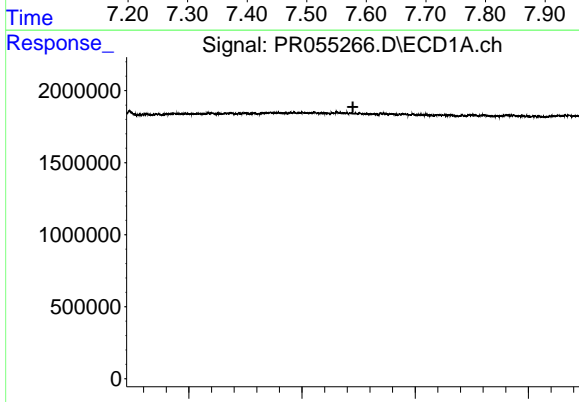
R.T.: 8.842 min
 Delta R.T.: 0.000 min
 Response: 25745
 Conc: 0.26 ng/ml

Instrument :
 ECD_R
 ClientSampleId :



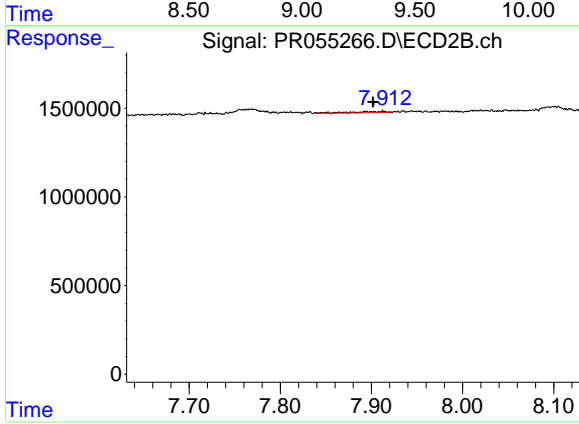
#44 AR-1268-4

R.T.: 7.627 min
 Delta R.T.: 0.019 min
 Response: 446798
 Conc: 4.01 ng/ml



#45 AR-1268-5

R.T.: 0.000 min
 Exp R.T. : 9.225 min
 Response: 0
 Conc: N.D.



#45 AR-1268-5

R.T.: 7.912 min
 Delta R.T.: 0.010 min
 Response: 201747
 Conc: 0.25 ng/ml