

Data Path : Z:\pestpcbsrv\HPCHEM1\ECD_R\Data\PR071422\
 Data File : PR055288.D
 Signal(s) : Signal #1: ECD1A.ch Signal #2: ECD2B.ch
 Acq On : 13 Jul 2022 17:44
 Operator : AJ\MA
 Sample : N3680-04
 Misc :
 ALS Vial : 12 Sample Multiplier: 1

Instrument :
 ECD_R
 ClientSampleId :

Integration File signal 1: autoint1.e
 Integration File signal 2: autoint2.e
 Quant Time: Jul 14 06:34:01 2022
 Quant Method : Z:\pestpcbsrv\HPCHEM1\ECD_R\Method\PR062722.M
 Quant Title : GC EXTRACTABLES
 QLast Update : Mon Jun 27 17:05:06 2022
 Response via : Initial Calibration
 Integrator: ChemStation

Volume Inj. : 2 µl
 Signal #1 Phase : ZB-MR1 Signal #2 Phase: ZB-MR2
 Signal #1 Info : 30Mx0.32mmx 0.50µ Signal #2 Info : 30M x 0.32mm x 0.25µm

Compound	RT#1	RT#2	Resp#1	Resp#2	ng/ml	ng/ml
System Monitoring Compounds						
1) SA Tetrachlo...	3.638	2.909	72560612	34775134	19.949	20.831
2) SA Decachlor...	9.536	8.137	52545960	52055210	36.442	37.049
Target Compounds						
3) L1 AR-1016-1	4.853	4.040f	971481	273305	9.497	4.767 #
4) L1 AR-1016-2	0.000	4.040	0	273305	N.D.	3.499 #
5) L1 AR-1016-3	4.953	4.222	303926	664149	3.480	15.609 #
6) L1 AR-1016-4	5.047	4.264	1121842	859870	15.465	26.020 #
7) L1 AR-1016-5	5.346f	4.482	1167772	560017	18.106	13.256 #
8) L2 AR-1221-1	3.861	3.126	462762	308831	10.323	14.938 #
9) L2 AR-1221-2	3.949	3.209	3504589	1034718	106.833	65.660 #
10) L2 AR-1221-3	4.044	3.296	1479628	539566	14.640	11.169
11) L3 AR-1232-1	4.044	3.296	1479628	539566	15.952	12.219
12) L3 AR-1232-2	4.573	4.040	6767566	273305	155.191	6.810 #
13) L3 AR-1232-3	0.000	4.222	0	664149	N.D.	28.735 #
14) L3 AR-1232-4	5.047	4.306	1121842	928989	31.433	50.238 #
15) L3 AR-1232-5	5.149	4.482	2018473	560017	74.648	24.973 #
16) L4 AR-1242-1	4.853	4.040f	971481	273305	11.278	5.704 #
17) L4 AR-1242-2	0.000	4.040	0	273305	N.D.	4.197 #
18) L4 AR-1242-3	4.953	4.222	303926	664149	4.169	18.781 #
19) L4 AR-1242-4	5.047	4.306	1121842	928989	18.947	28.230 #
20) L4 AR-1242-5	5.839	4.848	7885780	6578810	150.576	152.189
21) L5 AR-1248-1	4.853	4.040	971481	273305	14.436	7.644 #
22) L5 AR-1248-2	5.149	4.264	2018473	859870	24.536	18.133 #
23) L5 AR-1248-3	5.346f	4.306	1167772	928989	13.050	19.527 #
24) L5 AR-1248-4	5.793	4.482	4795621	560017	54.087	9.498 #
25) L5 AR-1248-5	5.839	4.890	7885780	1616144	91.691	27.974 #
26) L6 AR-1254-1	5.767	4.848	11340324	6578810	121.813	75.209 #
27) L6 AR-1254-2	6.004	5.007	18637619	11180687	142.661	144.942
28) L6 AR-1254-3	6.397	5.425	26888661	21775125	212.861	176.651
29) L6 AR-1254-4	6.708	5.670	15567016	8184659	167.873	104.006 #
30) L6 AR-1254-5	7.190f	6.115	171.9E6	165.9E6	1748.244	1450.218
31) L7 AR-1260-1	6.577	5.565	25090575	16869138	288.156	213.441 #
32) L7 AR-1260-2	6.858	5.769	34112035	24805600	340.517	263.209
33) L7 AR-1260-3	7.250	5.924	13564045	14087147	202.095	157.765
34) L7 AR-1260-4	7.475f	6.429	26323719	8108977	327.166	117.807 #
35) L7 AR-1260-5	7.832	6.694	18206387	16458430	118.861	100.322
36) L8 AR-1262-1	7.250	6.161	13564045	15631579	131.113	146.104
37) L8 AR-1262-2	7.832	6.429	18206387	8108977	101.118	83.316
38) L8 AR-1262-3	8.144	6.998	15280588	5368079	122.562	69.947 #
39) L8 AR-1262-4	8.224	7.063	5100139	15178652	91.142	103.786
40) L8 AR-1262-5	8.846	7.602	4934255	4298281	72.163	62.263
41) L9 AR-1268-1	8.144	6.998	15280588	5368079	75.711	24.638 #

Data Path : Z:\pestpcbsrv\HPCHEM1\ECD_R\Data\PR071422\
 Data File : PR055288.D
 Signal(s) : Signal #1: ECD1A.ch Signal #2: ECD2B.ch
 Acq On : 13 Jul 2022 17:44
 Operator : AJ\MA
 Sample : N3680-04
 Misc :
 ALS Vial : 12 Sample Multiplier: 1

Instrument :
 ECD_R
 ClientSampleId :

Integration File signal 1: autoint1.e
 Integration File signal 2: autoint2.e
 Quant Time: Jul 14 06:34:01 2022
 Quant Method : Z:\pestpcbsrv\HPCHEM1\ECD_R\Method\PR062722.M
 Quant Title : GC EXTRACTABLES
 QLast Update : Mon Jun 27 17:05:06 2022
 Response via : Initial Calibration
 Integrator: ChemStation

Volume Inj. : 2 µl
 Signal #1 Phase : ZB-MR1 Signal #2 Phase: ZB-MR2
 Signal #1 Info : 30Mx0.32mmx 0.50µ Signal #2 Info : 30M x 0.32mm x 0.25µm

	Compound	RT#1	RT#2	Resp#1	Resp#2	ng/ml	ng/ml
42)	L9 AR-1268-2	8.224	7.063	5100139	15178652	27.486	75.794 #
43)	L9 AR-1268-3	8.443	7.288	8476476	7652672	54.383	45.949
44)	L9 AR-1268-4	8.846	7.602	4934255	4298281	67.342	57.694
45)	L9 AR-1268-5	9.228	7.897	16604008	16053737	33.208	30.200

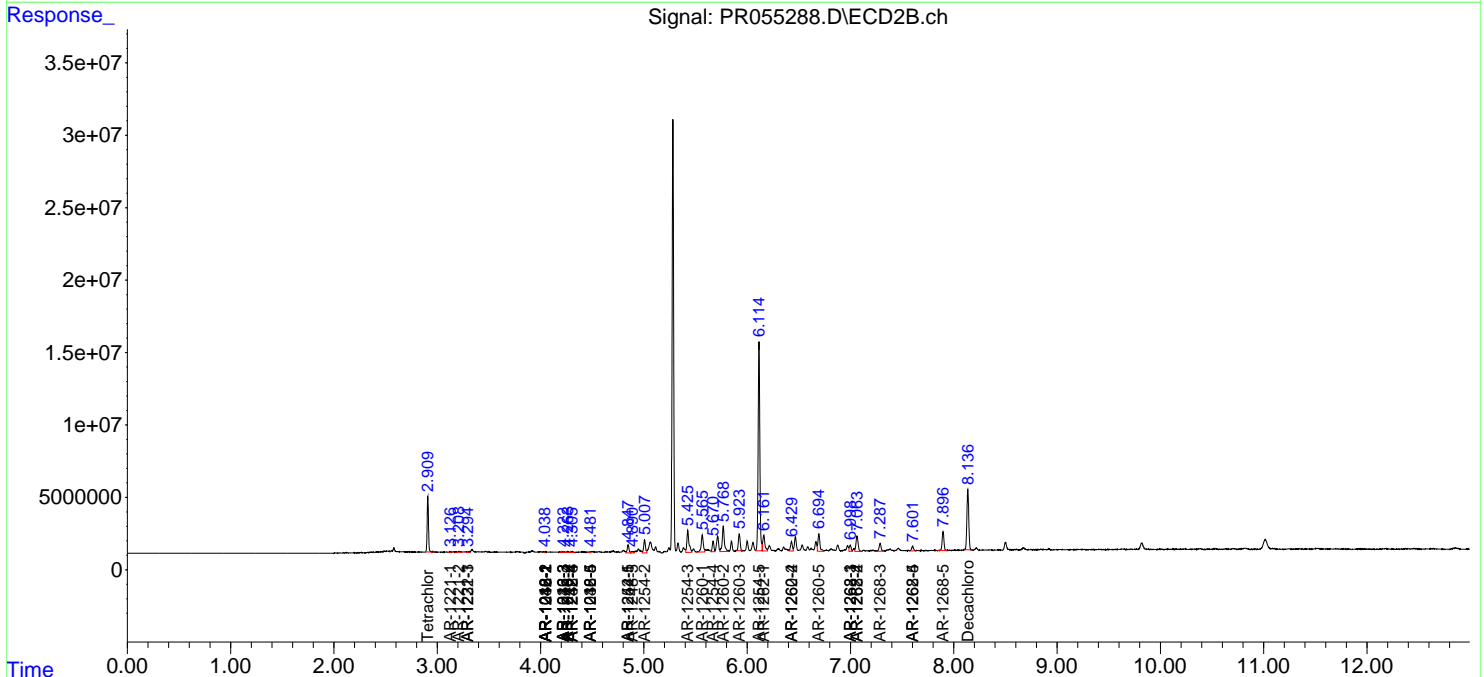
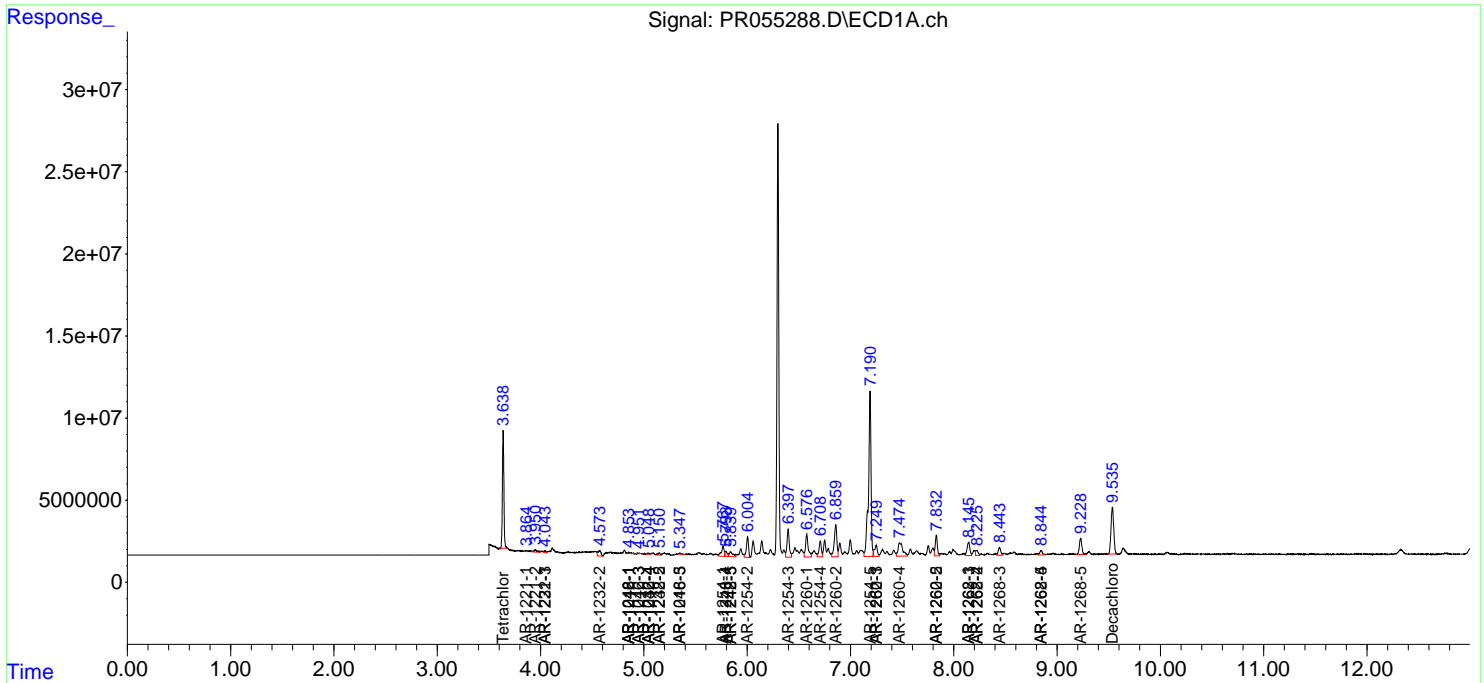
(f)=RT Delta > 1/2 Window (#)=Amounts differ by > 25% (m)=manual int.

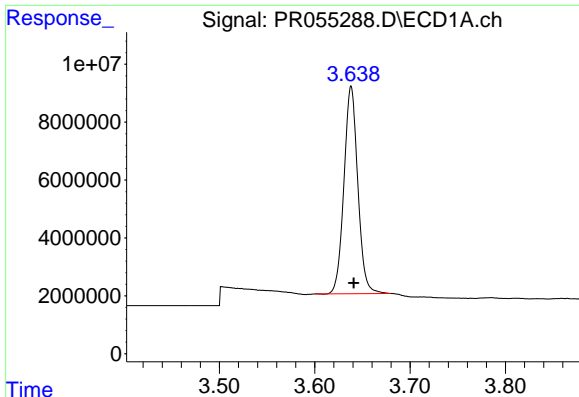
Data Path : Z:\pestpcbsrv\HPCHEM1\ECD_R\Data\PR071422\
 Data File : PR055288.D
 Signal(s) : Signal #1: ECD1A.ch Signal #2: ECD2B.ch
 Acq On : 13 Jul 2022 17:44
 Operator : AJ\MA
 Sample : N3680-04
 Misc :
 ALS Vial : 12 Sample Multiplier: 1

Instrument :
 ECD_R
 ClientSampleId :

Integration File signal 1: autoint1.e
 Integration File signal 2: autoint2.e
 Quant Time: Jul 14 06:34:01 2022
 Quant Method : Z:\pestpcbsrv\HPCHEM1\ECD_R\Method\PR062722.M
 Quant Title : GC EXTRACTABLES
 QLast Update : Mon Jun 27 17:05:06 2022
 Response via : Initial Calibration
 Integrator: ChemStation

Volume Inj. : 2 µl
 Signal #1 Phase : ZB-MR1 Signal #2 Phase: ZB-MR2
 Signal #1 Info : 30Mx0.32mmx 0.50µ Signal #2 Info : 30M x 0.32mm x 0.25µm

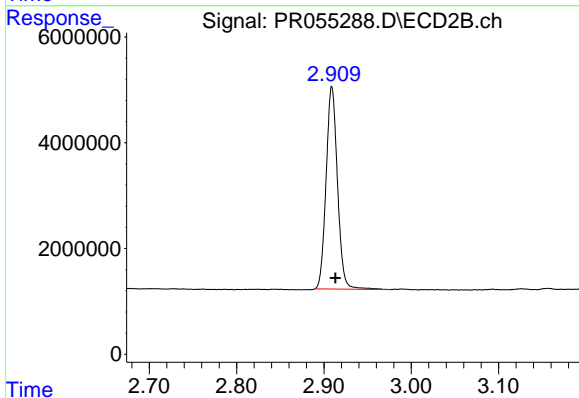




#1 Tetrachloro-m-xylene

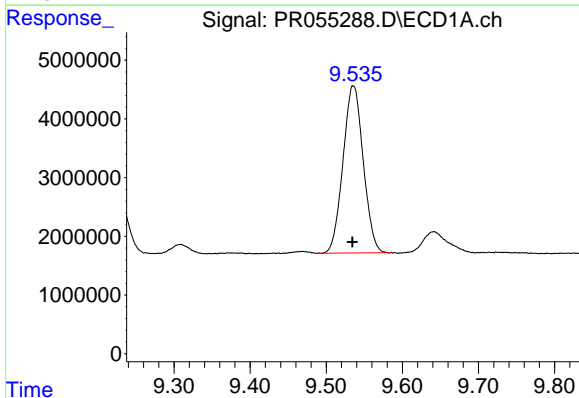
R.T.: 3.638 min
 Delta R.T.: -0.003 min
 Response: 72560612
 Conc: 19.95 ng/ml

Instrument :
 ECD_R
 ClientSampleId :



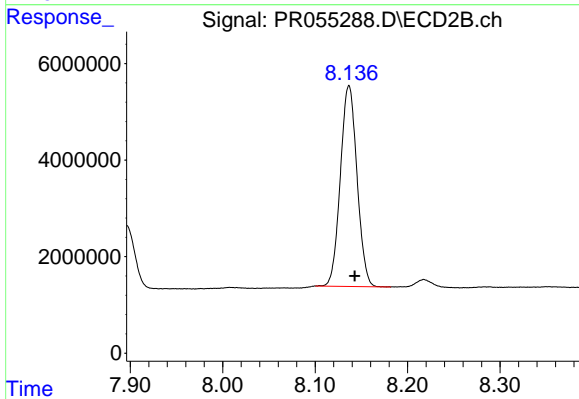
#1 Tetrachloro-m-xylene

R.T.: 2.909 min
 Delta R.T.: -0.004 min
 Response: 34775134
 Conc: 20.83 ng/ml



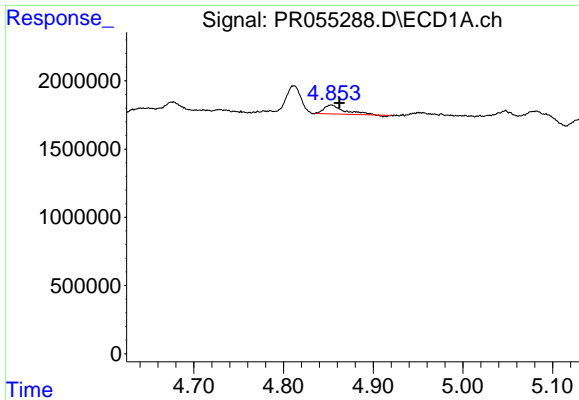
#2 Decachlorobiphenyl

R.T.: 9.536 min
 Delta R.T.: 0.002 min
 Response: 52545960
 Conc: 36.44 ng/ml



#2 Decachlorobiphenyl

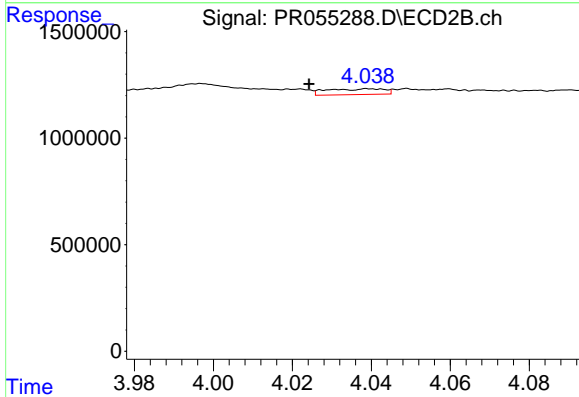
R.T.: 8.137 min
 Delta R.T.: -0.006 min
 Response: 52055210
 Conc: 37.05 ng/ml



#3 AR-1016-1

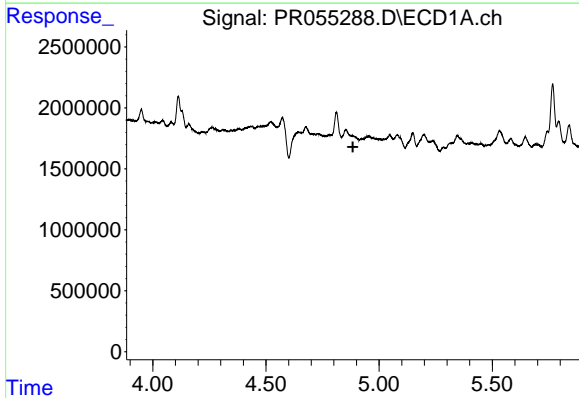
R.T.: 4.853 min
 Delta R.T.: -0.009 min
 Response: 971481
 Conc: 9.50 ng/ml

Instrument :
 ECD_R
 ClientSampleId :



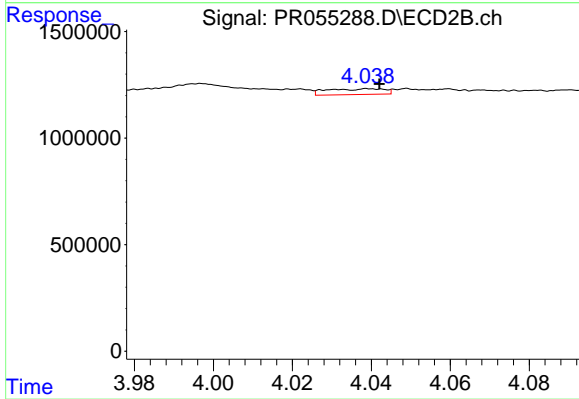
#3 AR-1016-1

R.T.: 4.040 min
 Delta R.T.: 0.015 min
 Response: 273305
 Conc: 4.77 ng/ml



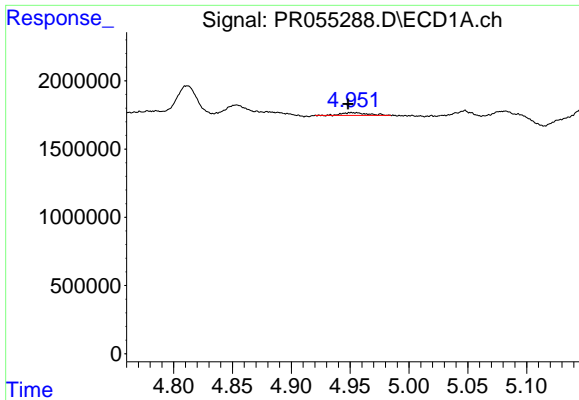
#4 AR-1016-2

R.T.: 0.000 min
 Exp R.T. : 4.884 min
 Response: 0
 Conc: N.D.



#4 AR-1016-2

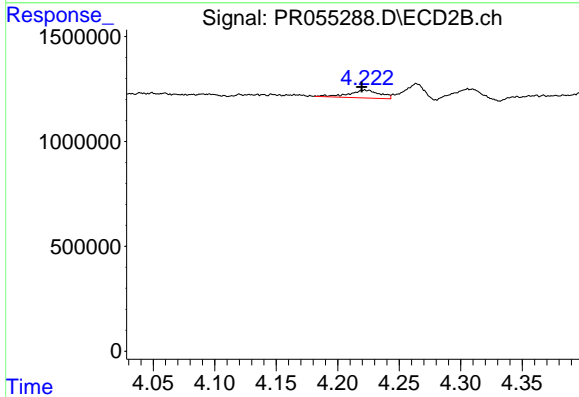
R.T.: 4.040 min
 Delta R.T.: -0.002 min
 Response: 273305
 Conc: 3.50 ng/ml



#5 AR-1016-3

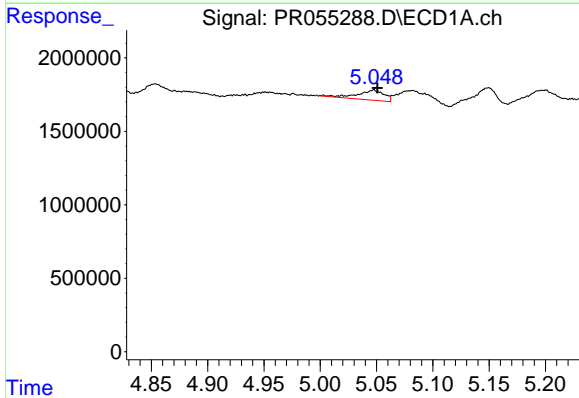
R.T.: 4.953 min
 Delta R.T.: 0.004 min
 Response: 303926
 Conc: 3.48 ng/ml

Instrument :
 ECD_R
 ClientSampleId :



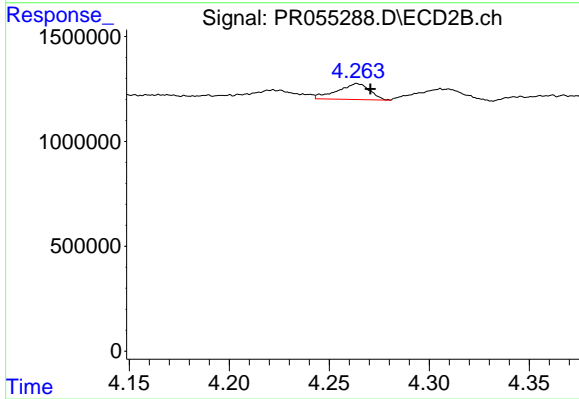
#5 AR-1016-3

R.T.: 4.222 min
 Delta R.T.: 0.002 min
 Response: 664149
 Conc: 15.61 ng/ml



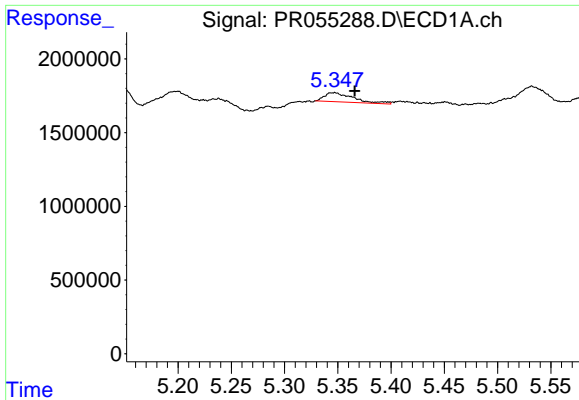
#6 AR-1016-4

R.T.: 5.047 min
 Delta R.T.: -0.003 min
 Response: 1121842
 Conc: 15.47 ng/ml



#6 AR-1016-4

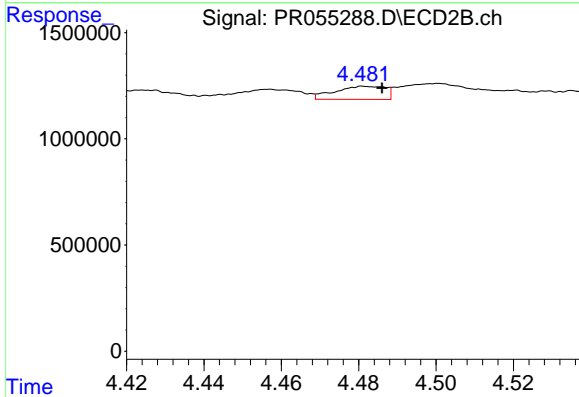
R.T.: 4.264 min
 Delta R.T.: -0.007 min
 Response: 859870
 Conc: 26.02 ng/ml



#7 AR-1016-5

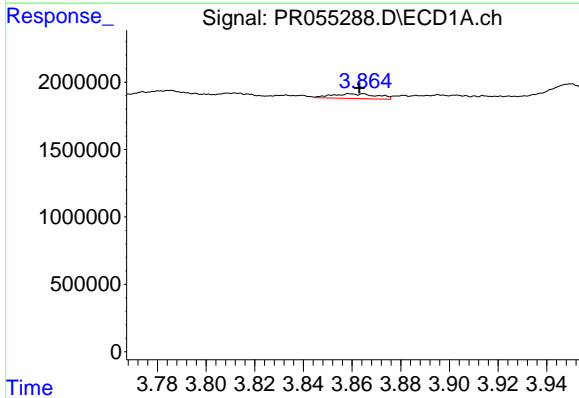
R.T.: 5.346 min
 Delta R.T.: -0.020 min
 Response: 1167772
 Conc: 18.11 ng/ml

Instrument :
 ECD_R
 ClientSampleId :



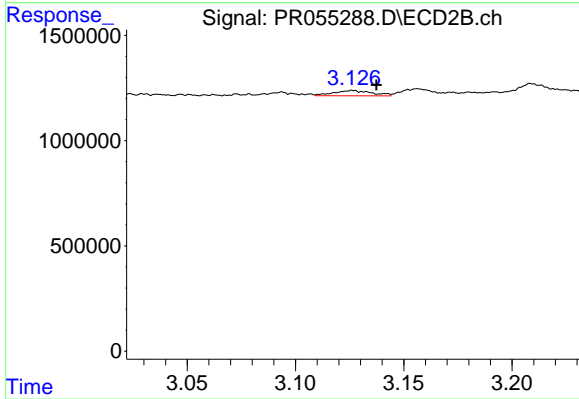
#7 AR-1016-5

R.T.: 4.482 min
 Delta R.T.: -0.004 min
 Response: 560017
 Conc: 13.26 ng/ml



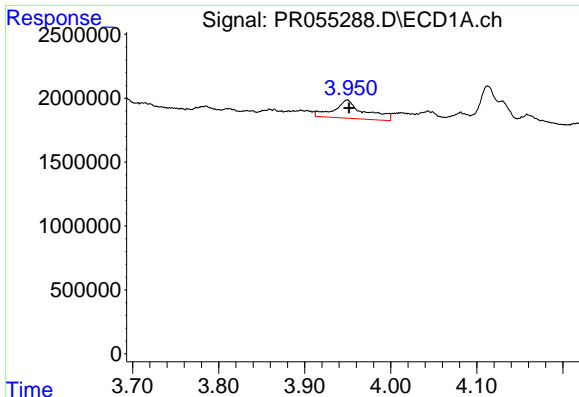
#8 AR-1221-1

R.T.: 3.861 min
 Delta R.T.: -0.002 min
 Response: 462762
 Conc: 10.32 ng/ml



#8 AR-1221-1

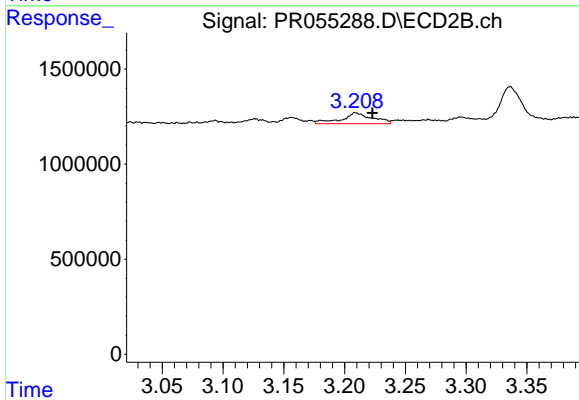
R.T.: 3.126 min
 Delta R.T.: -0.011 min
 Response: 308831
 Conc: 14.94 ng/ml



#9 AR-1221-2

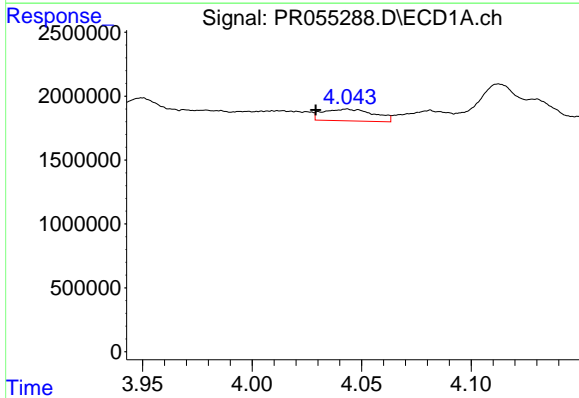
R.T.: 3.949 min
 Delta R.T.: -0.002 min
 Response: 3504589
 Conc: 106.83 ng/ml

Instrument :
 ECD_R
 ClientSampleId :



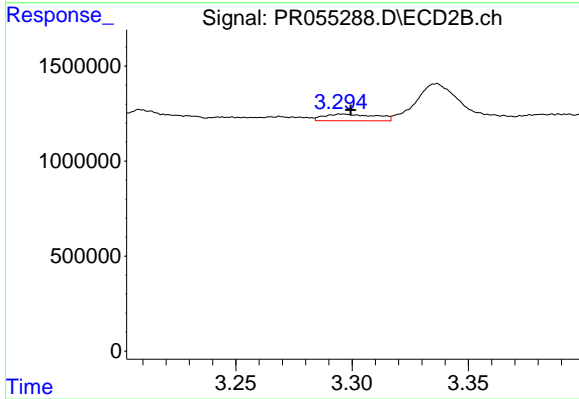
#9 AR-1221-2

R.T.: 3.209 min
 Delta R.T.: -0.014 min
 Response: 1034718
 Conc: 65.66 ng/ml



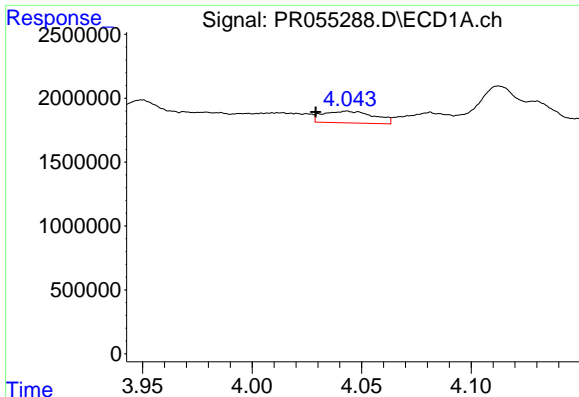
#10 AR-1221-3

R.T.: 4.044 min
 Delta R.T.: 0.014 min
 Response: 1479628
 Conc: 14.64 ng/ml



#10 AR-1221-3

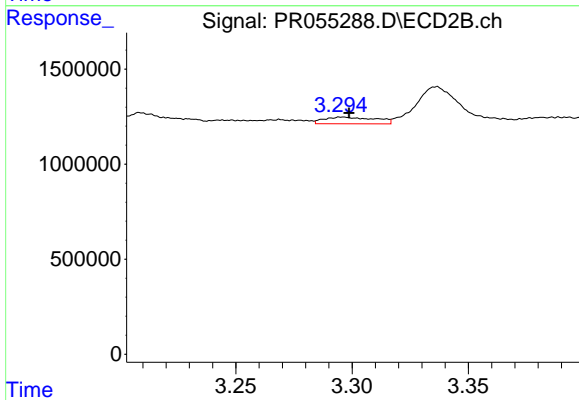
R.T.: 3.296 min
 Delta R.T.: -0.003 min
 Response: 539566
 Conc: 11.17 ng/ml



#11 AR-1232-1

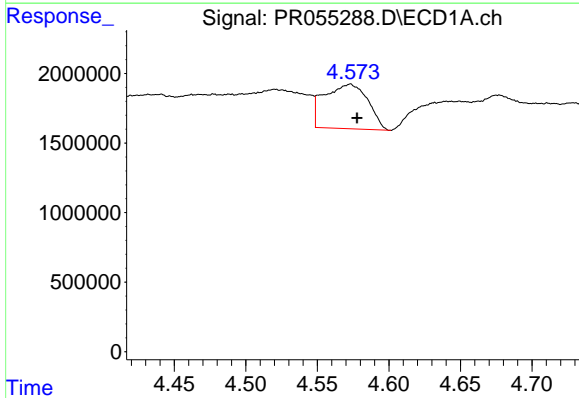
R.T.: 4.044 min
 Delta R.T.: 0.015 min
 Response: 1479628
 Conc: 15.95 ng/ml

Instrument :
 ECD_R
 ClientSampleId :



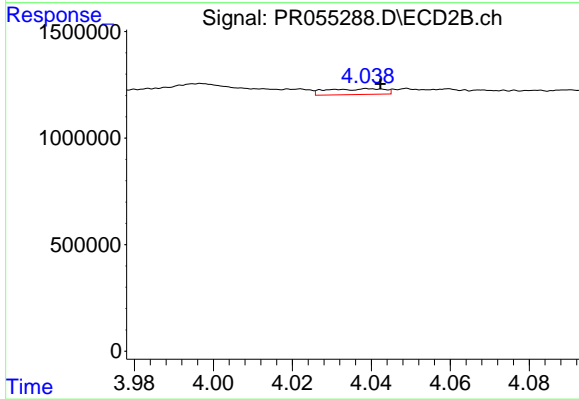
#11 AR-1232-1

R.T.: 3.296 min
 Delta R.T.: -0.003 min
 Response: 539566
 Conc: 12.22 ng/ml



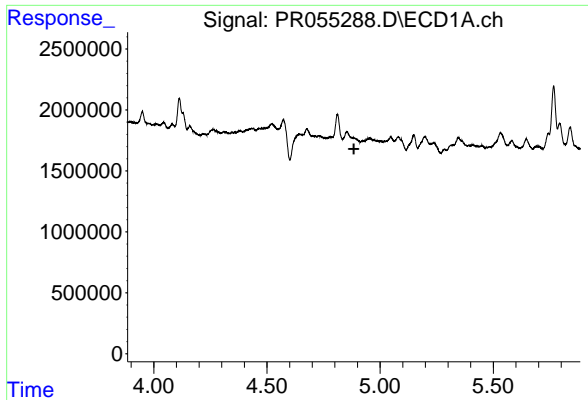
#12 AR-1232-2

R.T.: 4.573 min
 Delta R.T.: -0.005 min
 Response: 6767566
 Conc: 155.19 ng/ml



#12 AR-1232-2

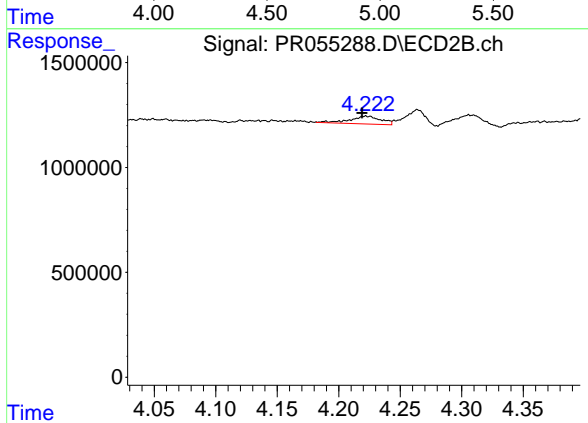
R.T.: 4.040 min
 Delta R.T.: -0.003 min
 Response: 273305
 Conc: 6.81 ng/ml



#13 AR-1232-3

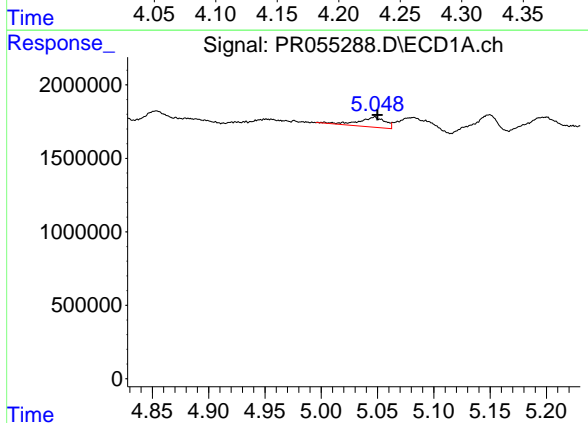
R.T.: 0.000 min
 Exp R.T.: 4.884 min
 Response: 0
 Conc: N.D.

Instrument :
 ECD_R
 ClientSampleId :



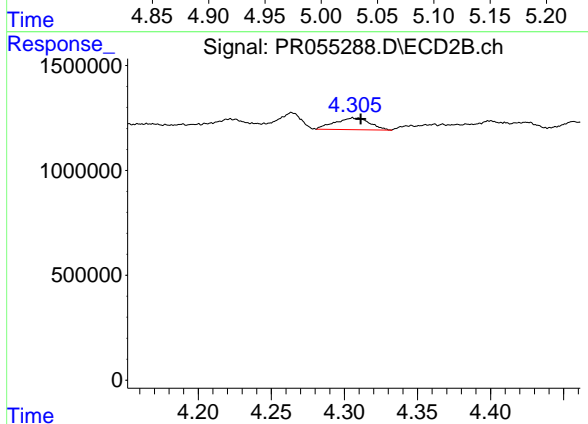
#13 AR-1232-3

R.T.: 4.222 min
 Delta R.T.: 0.003 min
 Response: 664149
 Conc: 28.73 ng/ml



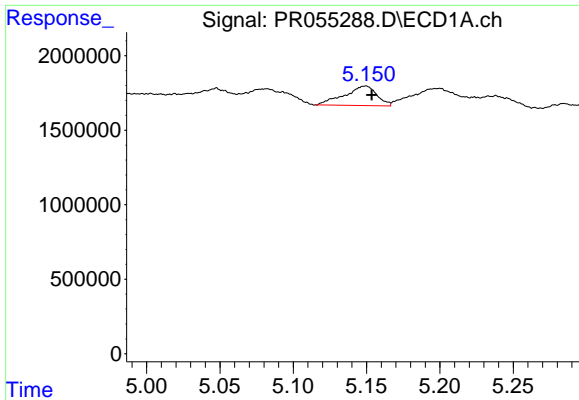
#14 AR-1232-4

R.T.: 5.047 min
 Delta R.T.: -0.003 min
 Response: 1121842
 Conc: 31.43 ng/ml



#14 AR-1232-4

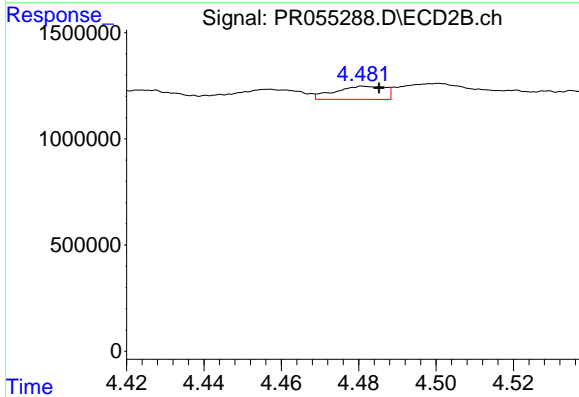
R.T.: 4.306 min
 Delta R.T.: -0.005 min
 Response: 928989
 Conc: 50.24 ng/ml



#15 AR-1232-5

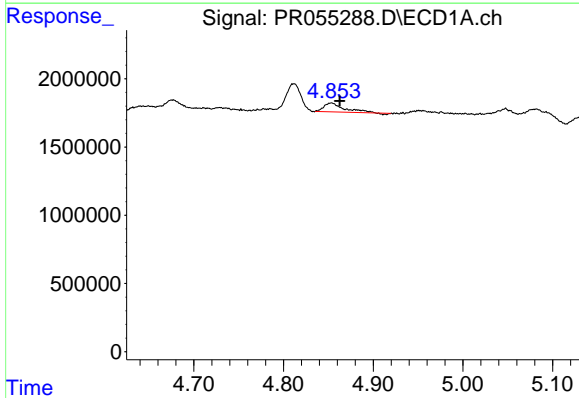
R.T.: 5.149 min
 Delta R.T.: -0.005 min
 Response: 2018473
 Conc: 74.65 ng/ml

Instrument :
 ECD_R
 ClientSampleId :



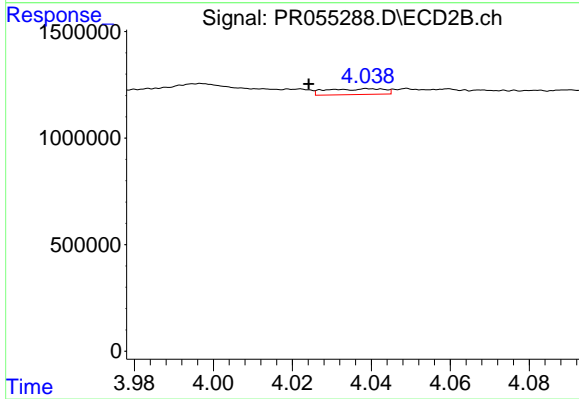
#15 AR-1232-5

R.T.: 4.482 min
 Delta R.T.: -0.003 min
 Response: 560017
 Conc: 24.97 ng/ml



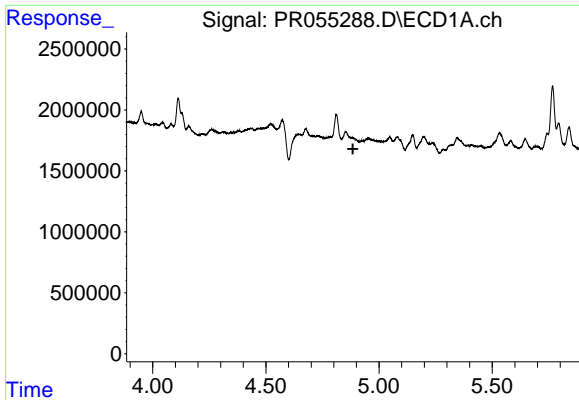
#16 AR-1242-1

R.T.: 4.853 min
 Delta R.T.: -0.009 min
 Response: 971481
 Conc: 11.28 ng/ml



#16 AR-1242-1

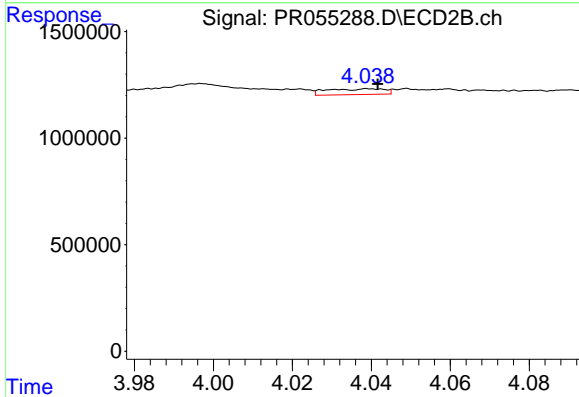
R.T.: 4.040 min
 Delta R.T.: 0.016 min
 Response: 273305
 Conc: 5.70 ng/ml



#17 AR-1242-2

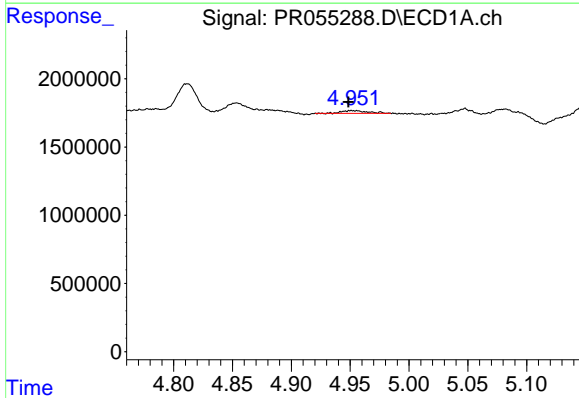
R.T.: 0.000 min
 Exp R.T.: 4.884 min
 Response: 0
 Conc: N.D.

Instrument :
 ECD_R
 ClientSampleId :



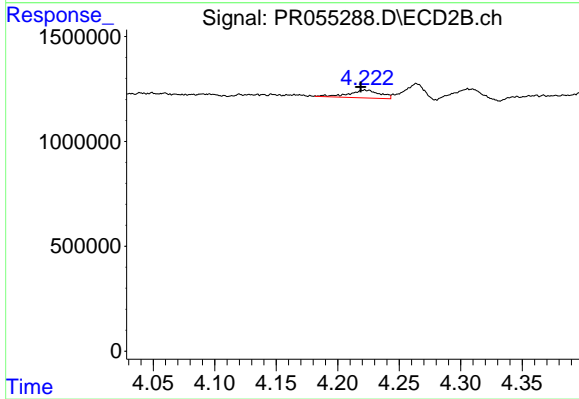
#17 AR-1242-2

R.T.: 4.040 min
 Delta R.T.: -0.002 min
 Response: 273305
 Conc: 4.20 ng/ml



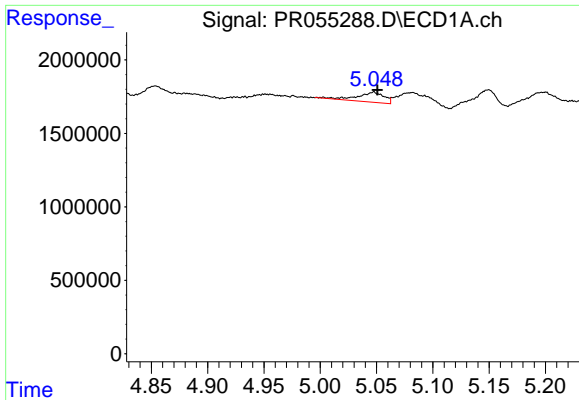
#18 AR-1242-3

R.T.: 4.953 min
 Delta R.T.: 0.004 min
 Response: 303926
 Conc: 4.17 ng/ml



#18 AR-1242-3

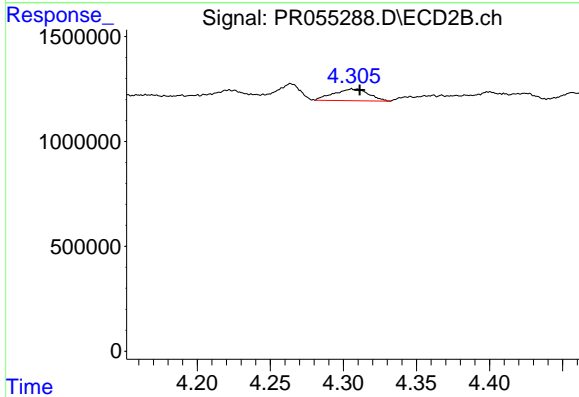
R.T.: 4.222 min
 Delta R.T.: 0.003 min
 Response: 664149
 Conc: 18.78 ng/ml



#19 AR-1242-4

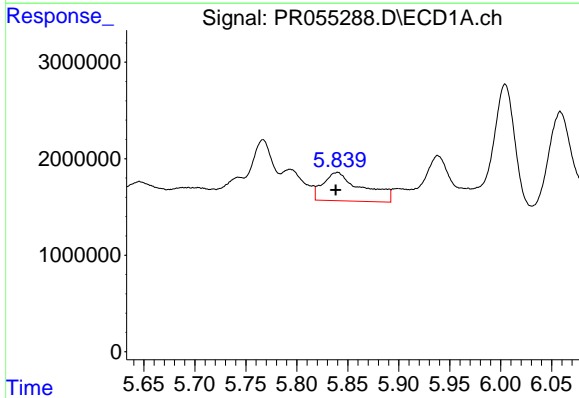
R.T.: 5.047 min
 Delta R.T.: -0.003 min
 Response: 1121842
 Conc: 18.95 ng/ml

Instrument :
 ECD_R
 ClientSampleId :



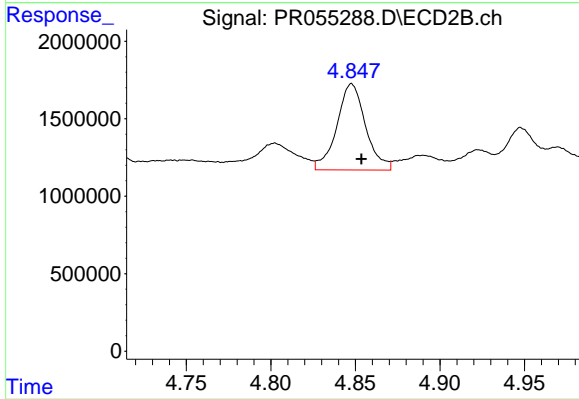
#19 AR-1242-4

R.T.: 4.306 min
 Delta R.T.: -0.005 min
 Response: 928989
 Conc: 28.23 ng/ml



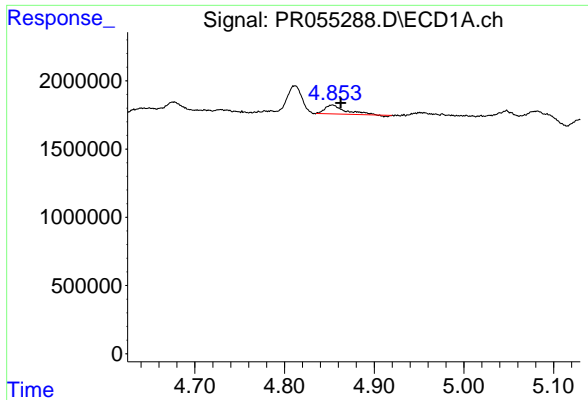
#20 AR-1242-5

R.T.: 5.839 min
 Delta R.T.: 0.001 min
 Response: 7885780
 Conc: 150.58 ng/ml



#20 AR-1242-5

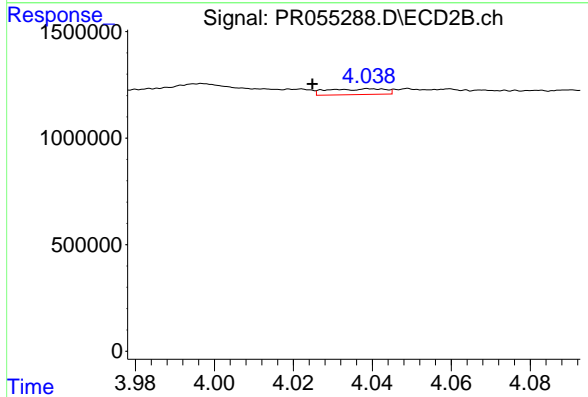
R.T.: 4.848 min
 Delta R.T.: -0.006 min
 Response: 6578810
 Conc: 152.19 ng/ml



#21 AR-1248-1

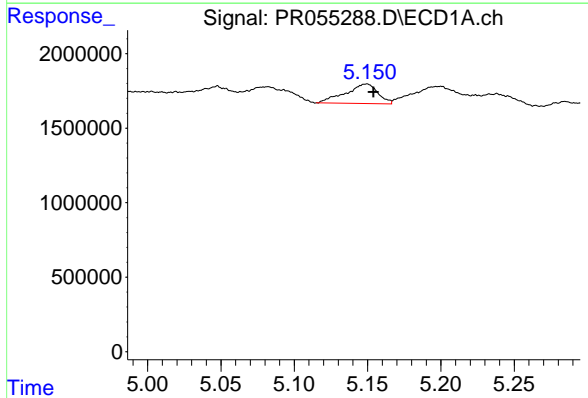
R.T.: 4.853 min
 Delta R.T.: -0.010 min
 Response: 971481
 Conc: 14.44 ng/ml

Instrument :
 ECD_R
 ClientSampleId :



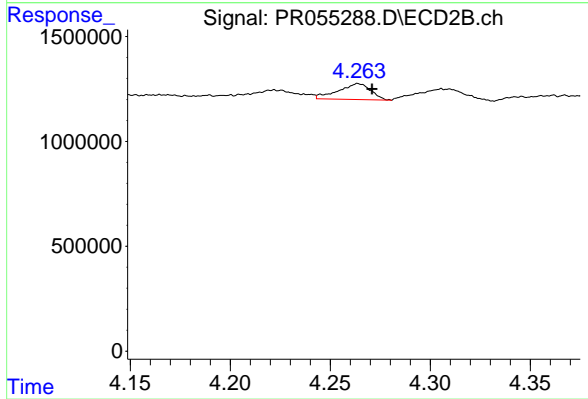
#21 AR-1248-1

R.T.: 4.040 min
 Delta R.T.: 0.015 min
 Response: 273305
 Conc: 7.64 ng/ml



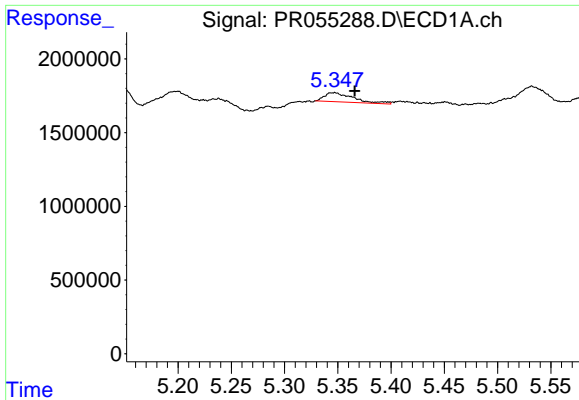
#22 AR-1248-2

R.T.: 5.149 min
 Delta R.T.: -0.005 min
 Response: 2018473
 Conc: 24.54 ng/ml



#22 AR-1248-2

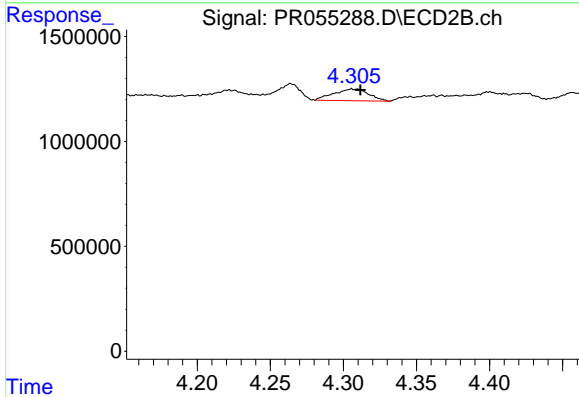
R.T.: 4.264 min
 Delta R.T.: -0.007 min
 Response: 859870
 Conc: 18.13 ng/ml



#23 AR-1248-3

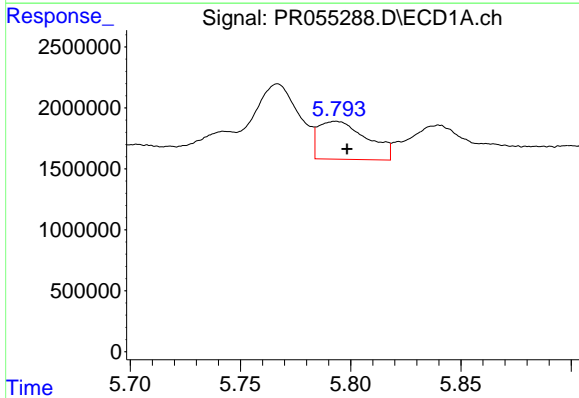
R.T.: 5.346 min
 Delta R.T.: -0.020 min
 Response: 1167772
 Conc: 13.05 ng/ml

Instrument :
 ECD_R
 ClientSampleId :



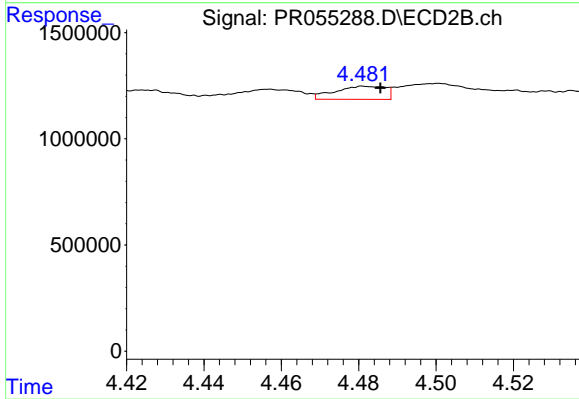
#23 AR-1248-3

R.T.: 4.306 min
 Delta R.T.: -0.006 min
 Response: 928989
 Conc: 19.53 ng/ml



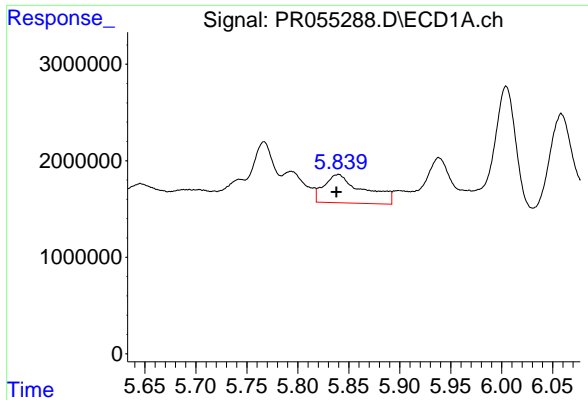
#24 AR-1248-4

R.T.: 5.793 min
 Delta R.T.: -0.005 min
 Response: 4795621
 Conc: 54.09 ng/ml



#24 AR-1248-4

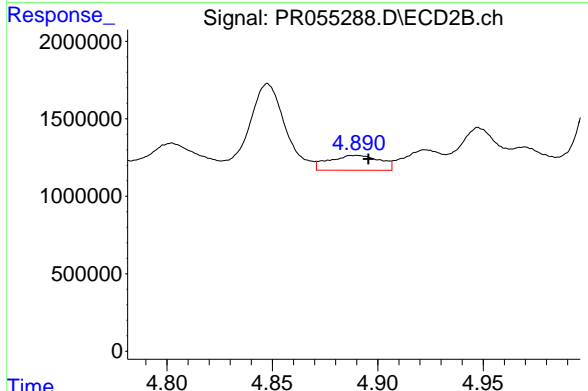
R.T.: 4.482 min
 Delta R.T.: -0.004 min
 Response: 560017
 Conc: 9.50 ng/ml



#25 AR-1248-5

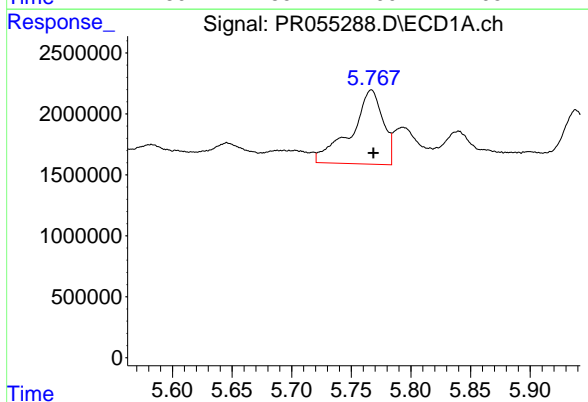
R.T.: 5.839 min
 Delta R.T.: 0.002 min
 Response: 7885780
 Conc: 91.69 ng/ml

Instrument :
 ECD_R
 ClientSampleId :



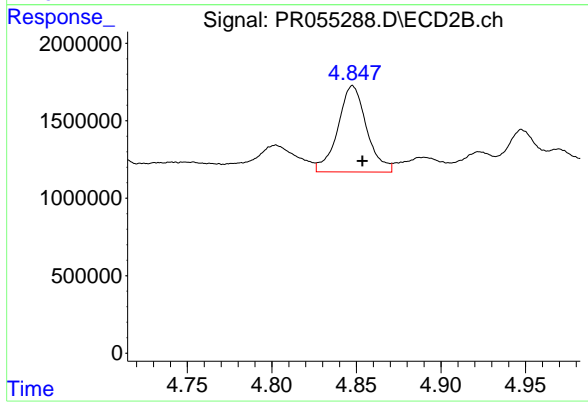
#25 AR-1248-5

R.T.: 4.890 min
 Delta R.T.: -0.006 min
 Response: 1616144
 Conc: 27.97 ng/ml



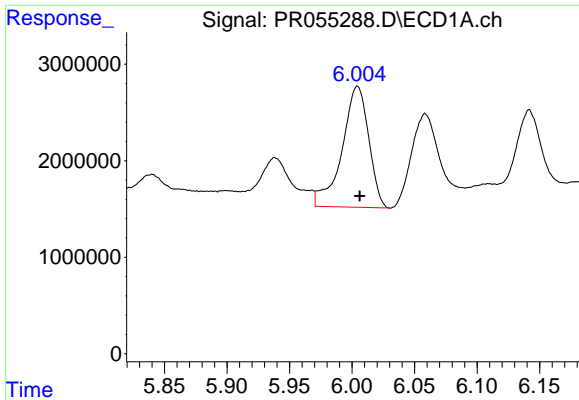
#26 AR-1254-1

R.T.: 5.767 min
 Delta R.T.: -0.002 min
 Response: 11340324
 Conc: 121.81 ng/ml



#26 AR-1254-1

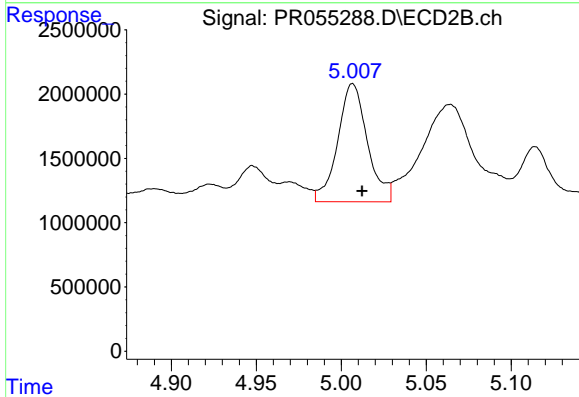
R.T.: 4.848 min
 Delta R.T.: -0.006 min
 Response: 6578810
 Conc: 75.21 ng/ml



#27 AR-1254-2

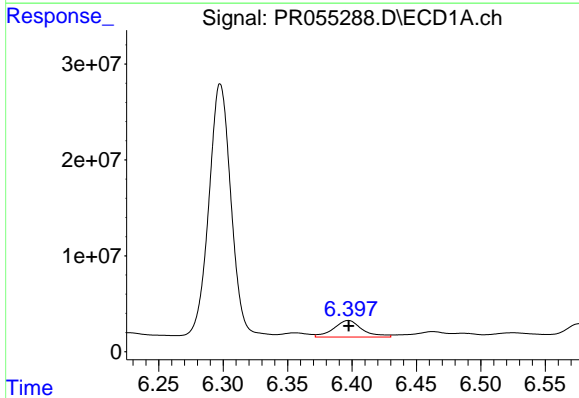
R.T.: 6.004 min
 Delta R.T.: -0.002 min
 Response: 18637619
 Conc: 142.66 ng/ml

Instrument :
 ECD_R
 ClientSampleId :



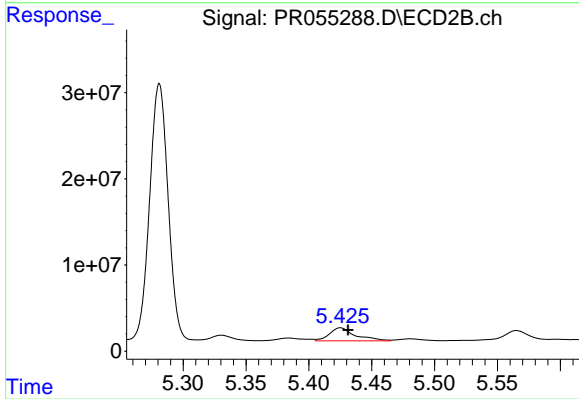
#27 AR-1254-2

R.T.: 5.007 min
 Delta R.T.: -0.005 min
 Response: 11180687
 Conc: 144.94 ng/ml



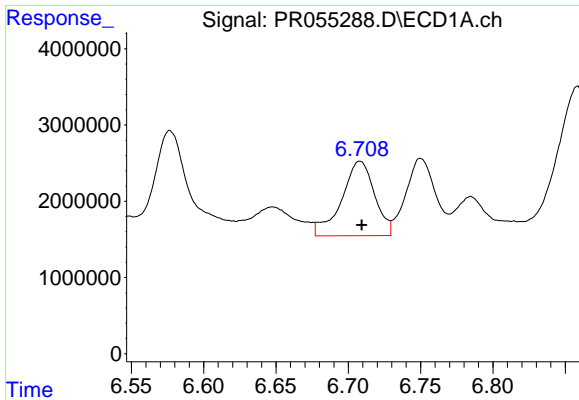
#28 AR-1254-3

R.T.: 6.397 min
 Delta R.T.: 0.000 min
 Response: 26888661
 Conc: 212.86 ng/ml



#28 AR-1254-3

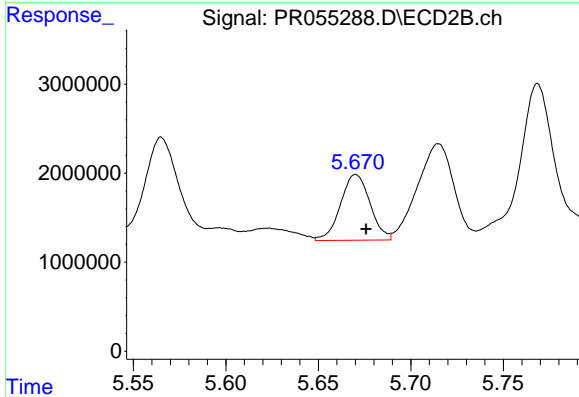
R.T.: 5.425 min
 Delta R.T.: -0.006 min
 Response: 21775125
 Conc: 176.65 ng/ml



#29 AR-1254-4

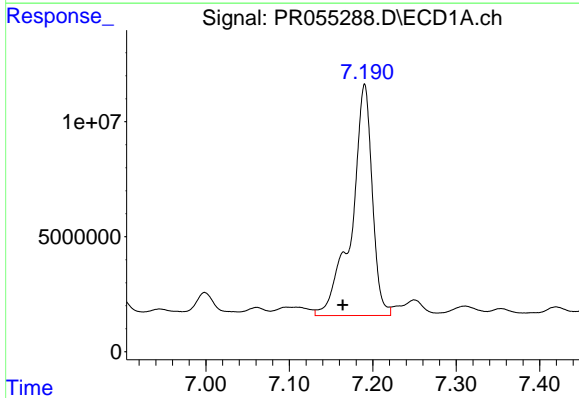
R.T.: 6.708 min
 Delta R.T.: -0.001 min
 Response: 15567016
 Conc: 167.87 ng/ml

Instrument :
 ECD_R
 ClientSampleId :



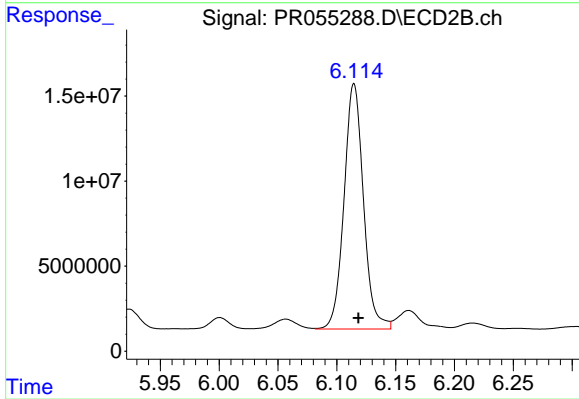
#29 AR-1254-4

R.T.: 5.670 min
 Delta R.T.: -0.006 min
 Response: 8184659
 Conc: 104.01 ng/ml



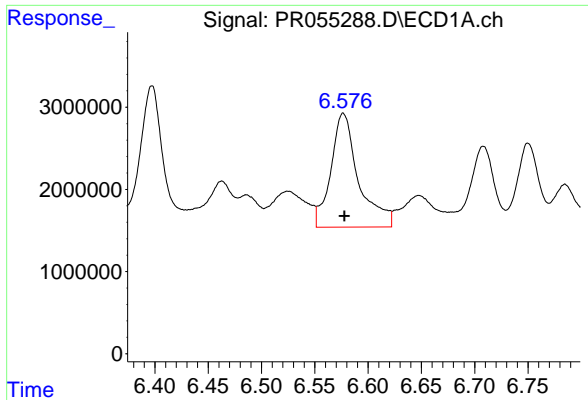
#30 AR-1254-5

R.T.: 7.190 min
 Delta R.T.: 0.026 min
 Response: 171861189
 Conc: 1748.24 ng/ml



#30 AR-1254-5

R.T.: 6.115 min
 Delta R.T.: -0.004 min
 Response: 165903770
 Conc: 1450.22 ng/ml

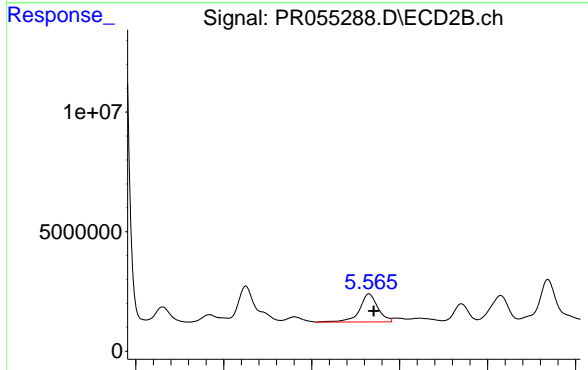


#31 AR-1260-1

R.T.: 6.577 min
 Delta R.T.: -0.001 min
 Response: 25090575
 Conc: 288.16 ng/ml

Instrument :
 ECD_R
 ClientSampleId :

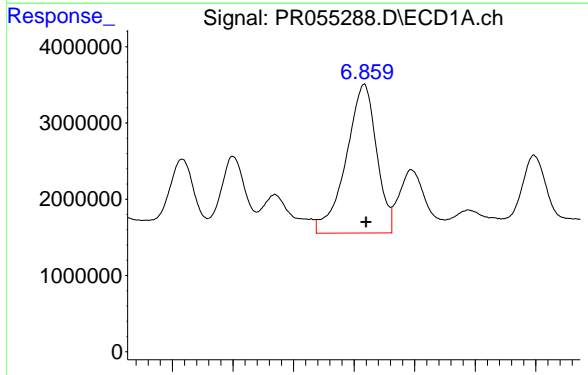
Time 6.40 6.45 6.50 6.55 6.60 6.65 6.70 6.75



#31 AR-1260-1

R.T.: 5.565 min
 Delta R.T.: -0.006 min
 Response: 16869138
 Conc: 213.44 ng/ml

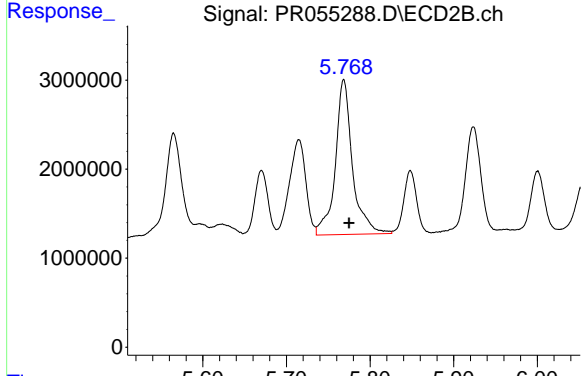
Time 5.30 5.40 5.50 5.60 5.70



#32 AR-1260-2

R.T.: 6.858 min
 Delta R.T.: -0.002 min
 Response: 34112035
 Conc: 340.52 ng/ml

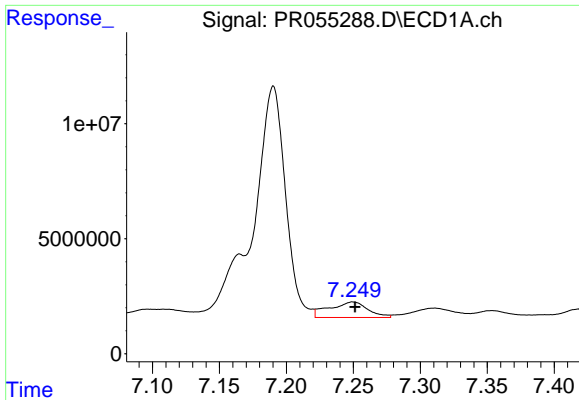
Time 6.70 6.75 6.80 6.85 6.90 6.95 7.00



#32 AR-1260-2

R.T.: 5.769 min
 Delta R.T.: -0.006 min
 Response: 24805600
 Conc: 263.21 ng/ml

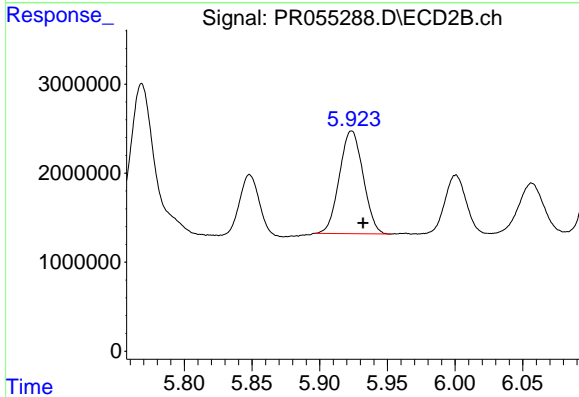
Time 5.60 5.70 5.80 5.90 6.00



#33 AR-1260-3

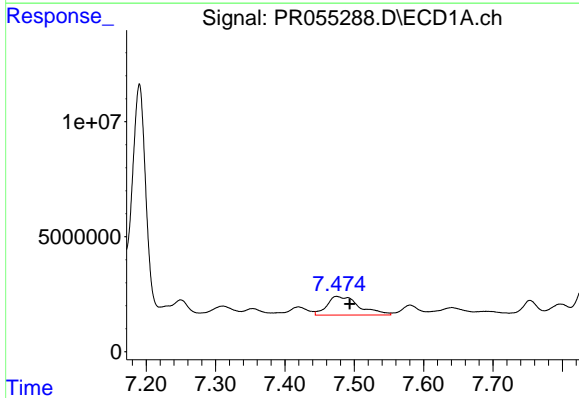
R.T.: 7.250 min
 Delta R.T.: -0.001 min
 Response: 13564045
 Conc: 202.09 ng/ml

Instrument :
 ECD_R
 ClientSampleId :



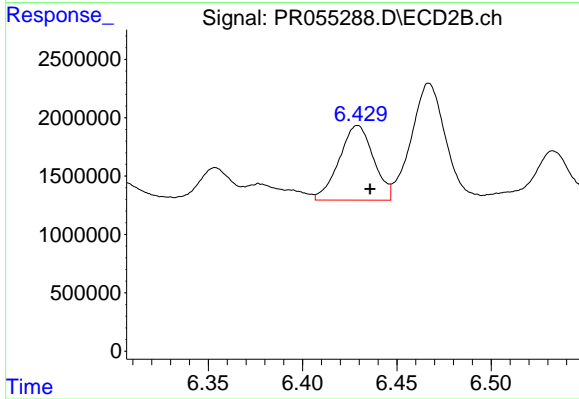
#33 AR-1260-3

R.T.: 5.924 min
 Delta R.T.: -0.008 min
 Response: 14087147
 Conc: 157.76 ng/ml



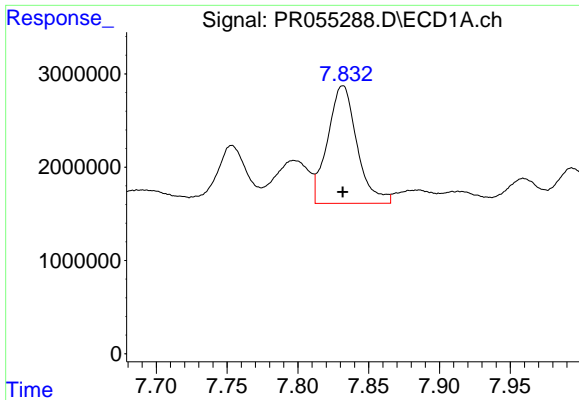
#34 AR-1260-4

R.T.: 7.475 min
 Delta R.T.: -0.018 min
 Response: 26323719
 Conc: 327.17 ng/ml



#34 AR-1260-4

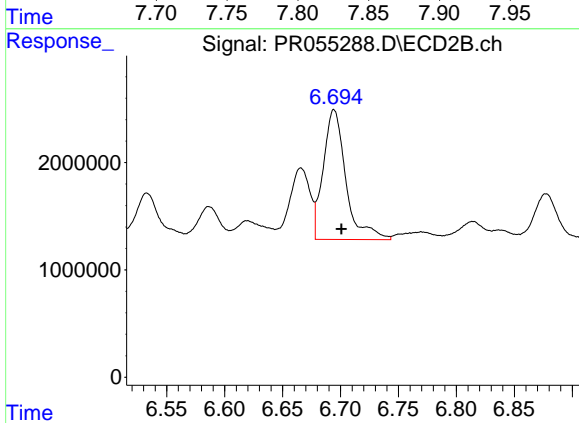
R.T.: 6.429 min
 Delta R.T.: -0.007 min
 Response: 8108977
 Conc: 117.81 ng/ml



#35 AR-1260-5

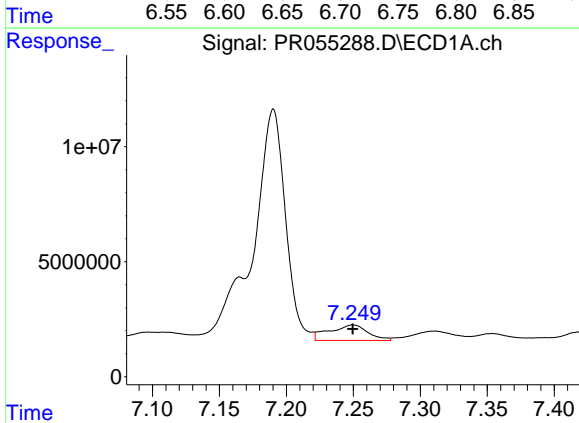
R.T.: 7.832 min
 Delta R.T.: 0.000 min
 Response: 18206387
 Conc: 118.86 ng/ml

Instrument :
 ECD_R
 ClientSampleId :



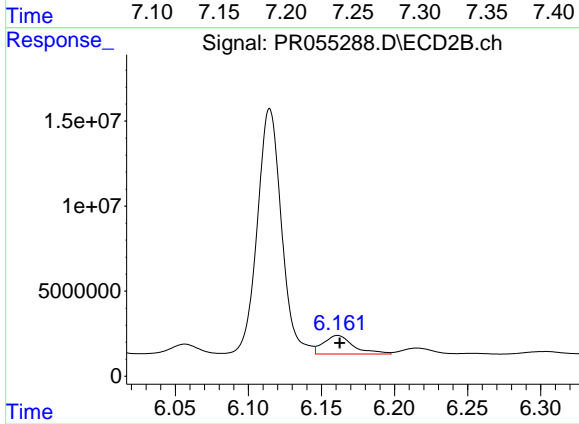
#35 AR-1260-5

R.T.: 6.694 min
 Delta R.T.: -0.006 min
 Response: 16458430
 Conc: 100.32 ng/ml



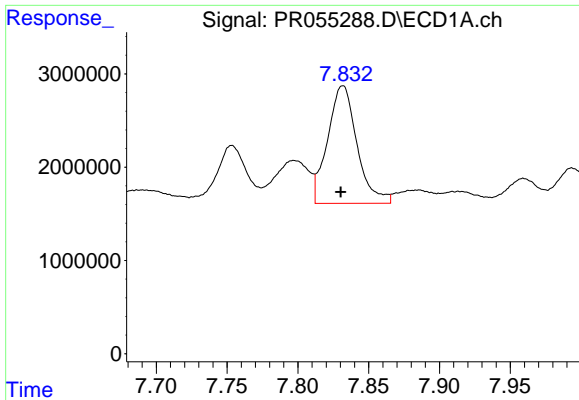
#36 AR-1262-1

R.T.: 7.250 min
 Delta R.T.: 0.000 min
 Response: 13564045
 Conc: 131.11 ng/ml



#36 AR-1262-1

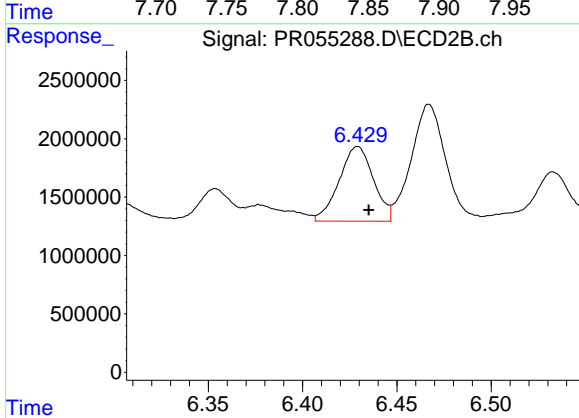
R.T.: 6.161 min
 Delta R.T.: -0.001 min
 Response: 15631579
 Conc: 146.10 ng/ml



#37 AR-1262-2

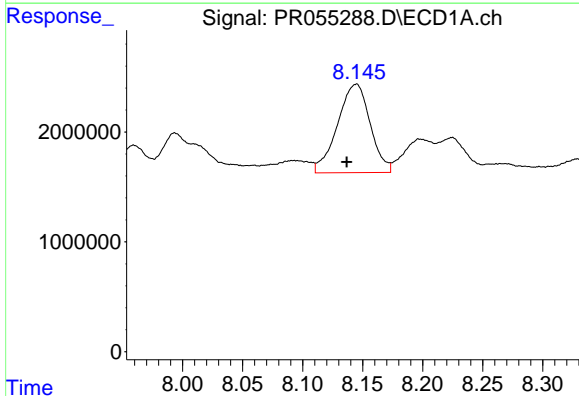
R.T.: 7.832 min
 Delta R.T.: 0.001 min
 Response: 18206387
 Conc: 101.12 ng/ml

Instrument :
 ECD_R
 ClientSampleId :



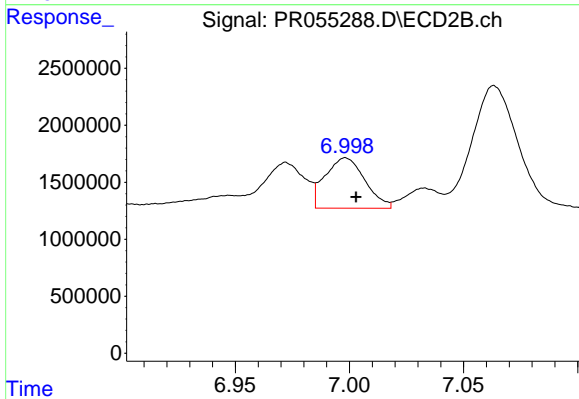
#37 AR-1262-2

R.T.: 6.429 min
 Delta R.T.: -0.006 min
 Response: 8108977
 Conc: 83.32 ng/ml



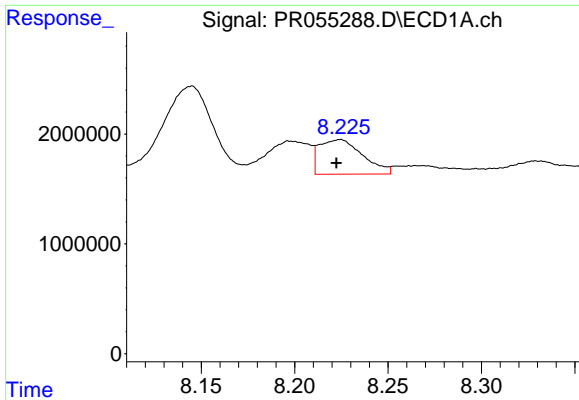
#38 AR-1262-3

R.T.: 8.144 min
 Delta R.T.: 0.008 min
 Response: 15280588
 Conc: 122.56 ng/ml



#38 AR-1262-3

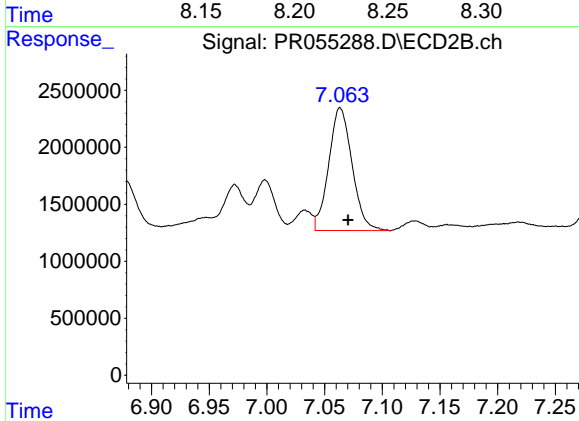
R.T.: 6.998 min
 Delta R.T.: -0.004 min
 Response: 5368079
 Conc: 69.95 ng/ml



#39 AR-1262-4

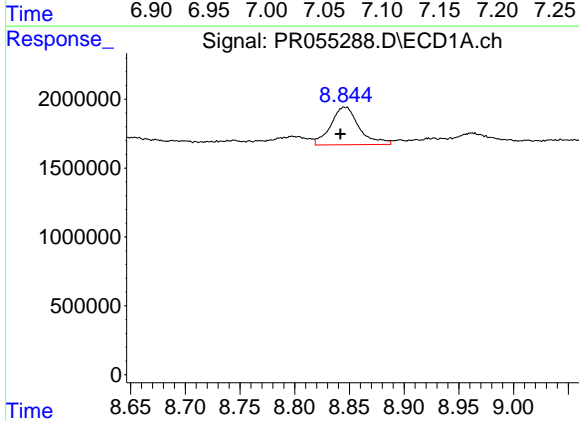
R.T.: 8.224 min
 Delta R.T.: 0.001 min
 Response: 5100139
 Conc: 91.14 ng/ml

Instrument :
 ECD_R
 ClientSampleId :



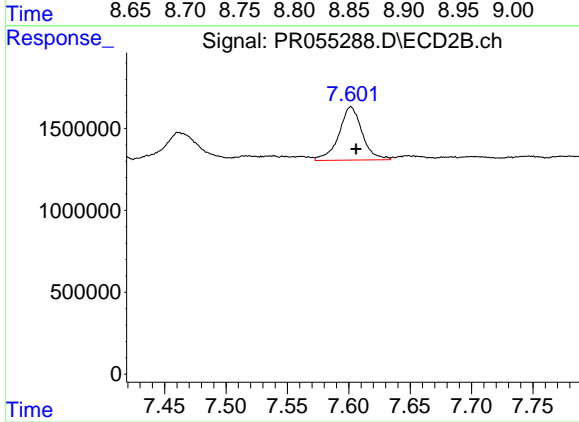
#39 AR-1262-4

R.T.: 7.063 min
 Delta R.T.: -0.007 min
 Response: 15178652
 Conc: 103.79 ng/ml



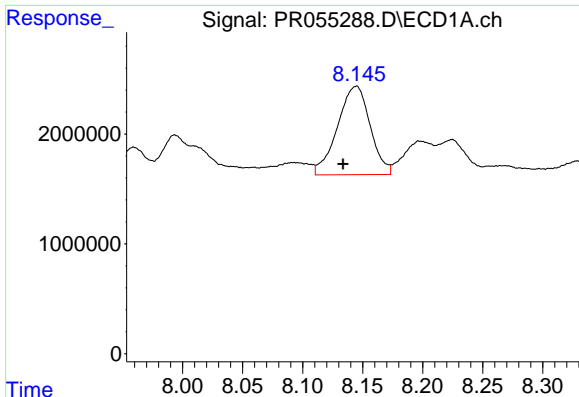
#40 AR-1262-5

R.T.: 8.846 min
 Delta R.T.: 0.004 min
 Response: 4934255
 Conc: 72.16 ng/ml



#40 AR-1262-5

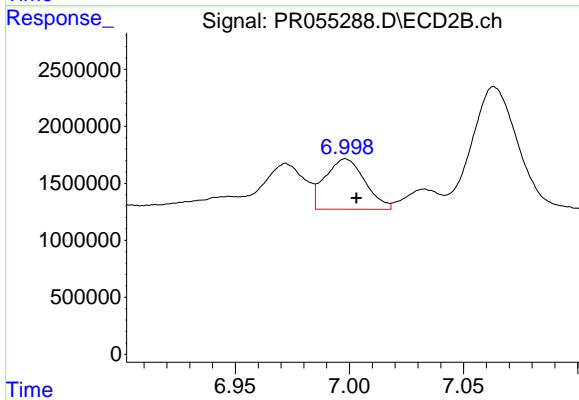
R.T.: 7.602 min
 Delta R.T.: -0.004 min
 Response: 4298281
 Conc: 62.26 ng/ml



#41 AR-1268-1

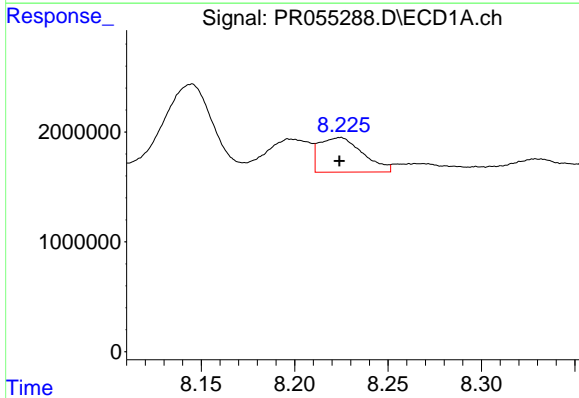
R.T.: 8.144 min
 Delta R.T.: 0.011 min
 Response: 15280588
 Conc: 75.71 ng/ml

Instrument :
 ECD_R
 ClientSampleId :



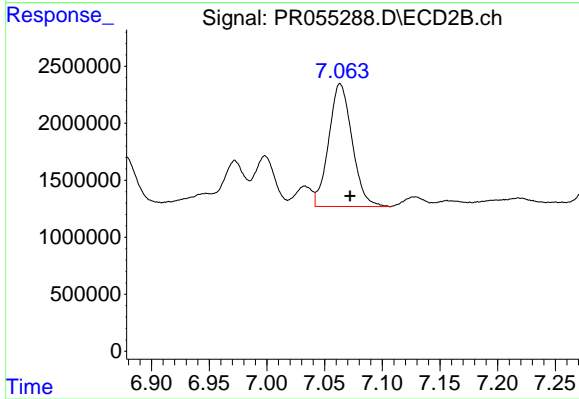
#41 AR-1268-1

R.T.: 6.998 min
 Delta R.T.: -0.005 min
 Response: 5368079
 Conc: 24.64 ng/ml



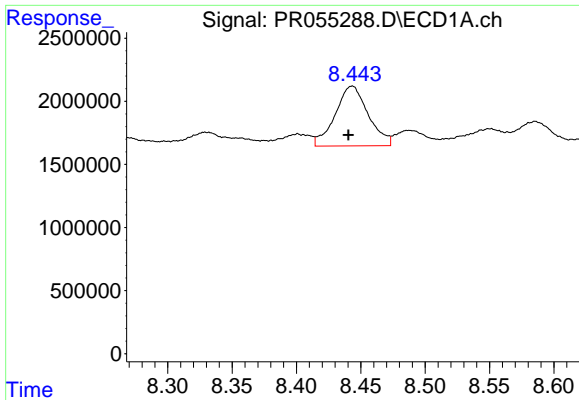
#42 AR-1268-2

R.T.: 8.224 min
 Delta R.T.: 0.000 min
 Response: 5100139
 Conc: 27.49 ng/ml



#42 AR-1268-2

R.T.: 7.063 min
 Delta R.T.: -0.009 min
 Response: 15178652
 Conc: 75.79 ng/ml

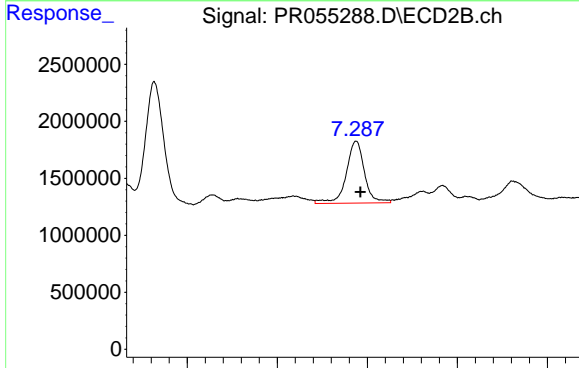


#43 AR-1268-3

R.T.: 8.443 min
 Delta R.T.: 0.003 min
 Response: 8476476
 Conc: 54.38 ng/ml

Instrument :
 ECD_R
 ClientSampleId :

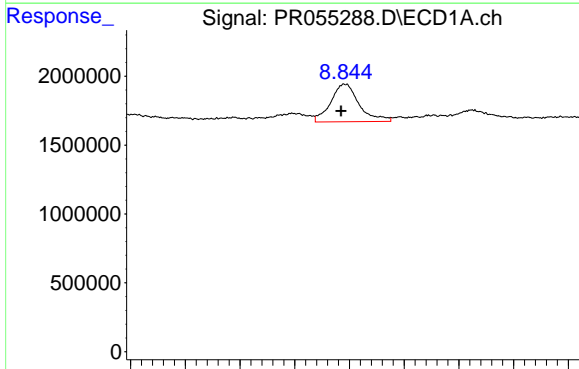
Time 8.30 8.35 8.40 8.45 8.50 8.55 8.60



#43 AR-1268-3

R.T.: 7.288 min
 Delta R.T.: -0.005 min
 Response: 7652672
 Conc: 45.95 ng/ml

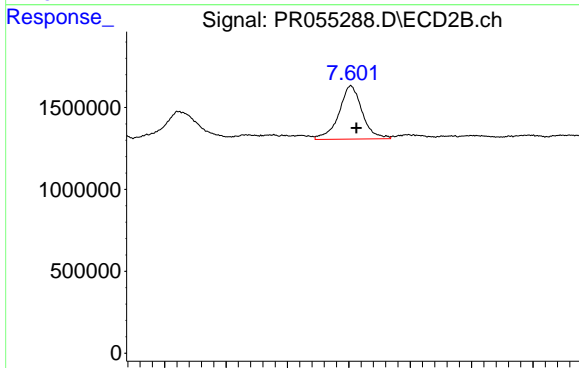
Time 7.10 7.20 7.30 7.40 7.50



#44 AR-1268-4

R.T.: 8.846 min
 Delta R.T.: 0.003 min
 Response: 4934255
 Conc: 67.34 ng/ml

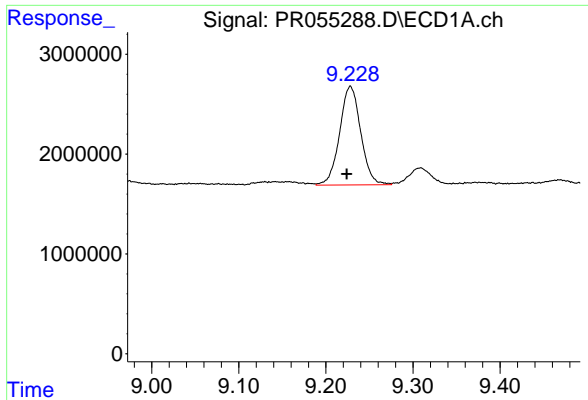
Time 8.65 8.70 8.75 8.80 8.85 8.90 8.95 9.00



#44 AR-1268-4

R.T.: 7.602 min
 Delta R.T.: -0.004 min
 Response: 4298281
 Conc: 57.69 ng/ml

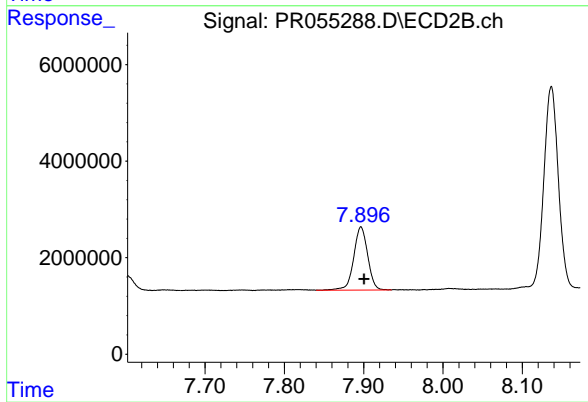
Time 7.45 7.50 7.55 7.60 7.65 7.70 7.75



#45 AR-1268-5

R.T.: 9.228 min
Delta R.T.: 0.004 min
Response: 16604008
Conc: 33.21 ng/ml

Instrument :
ECD_R
ClientSampleId :



#45 AR-1268-5

R.T.: 7.897 min
Delta R.T.: -0.004 min
Response: 16053737
Conc: 30.20 ng/ml