

Data Path : Z:\pestpcbsrv\HPCHEM1\ECD_R\Data\PR071422\
 Data File : PR055290.D
 Signal(s) : Signal #1: ECD1A.ch Signal #2: ECD2B.ch
 Acq On : 13 Jul 2022 18:15
 Operator : AJ\MA
 Sample : N3680-06
 Misc :
 ALS Vial : 14 Sample Multiplier: 1

Instrument :
 ECD_R
 ClientSampleId :

Integration File signal 1: autoint1.e
 Integration File signal 2: autoint2.e
 Quant Time: Jul 14 06:35:52 2022
 Quant Method : Z:\pestpcbsrv\HPCHEM1\ECD_R\Method\PR062722.M
 Quant Title : GC EXTRACTABLES
 QLast Update : Mon Jun 27 17:05:06 2022
 Response via : Initial Calibration
 Integrator: ChemStation

Volume Inj. : 2 µl
 Signal #1 Phase : ZB-MR1 Signal #2 Phase: ZB-MR2
 Signal #1 Info : 30Mx0.32mmx 0.50µ Signal #2 Info : 30M x 0.32mm x 0.25µm

Compound	RT#1	RT#2	Resp#1	Resp#2	ng/ml	ng/ml
System Monitoring Compounds						
1) SA Tetrachlo...	3.638	2.909	75756783	36040697	20.828	21.589
2) SA Decachlor...	9.534	8.135	46219520	45697902	32.054	32.525
Target Compounds						
3) L1 AR-1016-1	4.856	4.024	801909	748650	7.840	13.057 #
4) L1 AR-1016-2	4.856f	4.053	801909	1935657	5.530	24.780 #
5) L1 AR-1016-3	4.953	4.222	264463	2497813	3.028	58.704 #
6) L1 AR-1016-4	5.048	4.264	806335	1906939	11.116	57.704 #
7) L1 AR-1016-5	5.346f	4.499	1336926	3736180	20.729	88.437 #
8) L2 AR-1221-1	0.000	3.126	0	285362	N.D.	13.803 #
9) L2 AR-1221-2	3.948	3.211	991810	781100	30.234	49.567 #
10) L2 AR-1221-3	4.046f	3.296	1062393	454480	10.512	9.408
11) L3 AR-1232-1	4.046f	3.296	1062393	454480	11.454	10.292
12) L3 AR-1232-2	4.575	4.053	5135653	1935657	117.769	48.234 #
13) L3 AR-1232-3	4.856f	4.222	801909	2497813	10.544	108.069 #
14) L3 AR-1232-4	5.048	4.312	806335	2659047	22.593	143.797 #
15) L3 AR-1232-5	5.148	4.499	1261105	3736180	46.639	166.606 #
16) L4 AR-1242-1	4.856	4.024	801909	748650	9.309	15.625 #
17) L4 AR-1242-2	4.856f	4.053	801909	1935657	6.609	29.723 #
18) L4 AR-1242-3	4.953	4.222	264463	2497813	3.628	70.633 #
19) L4 AR-1242-4	5.048	4.312	806335	2659047	13.618	80.802 #
20) L4 AR-1242-5	5.839	4.848	5434570	4277996	103.771	98.964
21) L5 AR-1248-1	4.856	4.024	801909	748650	11.916	20.940 #
22) L5 AR-1248-2	5.148	4.264	1261105	1906939	15.330	40.214 #
23) L5 AR-1248-3	5.346f	4.312	1336926	2659047	14.940	55.891 #
24) L5 AR-1248-4	5.792	4.499	3679768	3736180	41.502	63.364 #
25) L5 AR-1248-5	5.839	4.889	5434570	1496994	63.190	25.912 #
26) L6 AR-1254-1	5.766	4.848	7879486	4277996	84.638	48.906 #
27) L6 AR-1254-2	6.003	5.007	11782985	5606473	90.192	72.680
28) L6 AR-1254-3	6.396	5.425	18171374	14771186	143.851	119.831
29) L6 AR-1254-4	6.707	5.671	10862154	4693878	117.137	59.647 #
30) L6 AR-1254-5	7.190f	6.114	144.2E6	136.7E6	1466.538	1195.182
31) L7 AR-1260-1	6.576	5.564	21299767	13769614	244.620	174.224 #
32) L7 AR-1260-2	6.857	5.769	31885335	23411264	318.290	248.414
33) L7 AR-1260-3	7.249	5.924	15945926	10466943	237.583	117.221 #
34) L7 AR-1260-4	7.490	6.429	14473056	7234117	179.879	105.097 #
35) L7 AR-1260-5	7.831	6.694	19958810	17193193	130.302	104.800
36) L8 AR-1262-1	7.249	6.159	15945926	11734709	154.137	109.681 #
37) L8 AR-1262-2	7.831	6.429	19958810	7234117	110.851	74.327 #
38) L8 AR-1262-3	8.144	6.998	18799077	5579490	150.783	72.702 #
39) L8 AR-1262-4	8.222	7.063	8848982	15513380	158.136	106.074 #
40) L8 AR-1262-5	8.844	7.601	5892572	4949894	86.178	71.702
41) L9 AR-1268-1	8.144	6.998	18799077	5579490	93.144	25.608 #

Data Path : Z:\pestpcbsrv\HPCHEM1\ECD_R\Data\PR071422\
 Data File : PR055290.D
 Signal(s) : Signal #1: ECD1A.ch Signal #2: ECD2B.ch
 Acq On : 13 Jul 2022 18:15
 Operator : AJ\MA
 Sample : N3680-06
 Misc :
 ALS Vial : 14 Sample Multiplier: 1

Instrument :
 ECD_R
 ClientSampleId :

Integration File signal 1: autoint1.e
 Integration File signal 2: autoint2.e
 Quant Time: Jul 14 06:35:52 2022
 Quant Method : Z:\pestpcbsrv\HPCHEM1\ECD_R\Method\PR062722.M
 Quant Title : GC EXTRACTABLES
 QLast Update : Mon Jun 27 17:05:06 2022
 Response via : Initial Calibration
 Integrator: ChemStation

Volume Inj. : 2 µl
 Signal #1 Phase : ZB-MR1 Signal #2 Phase: ZB-MR2
 Signal #1 Info : 30Mx0.32mmx 0.50µ Signal #2 Info : 30M x 0.32mm x 0.25µm

	Compound	RT#1	RT#2	Resp#1	Resp#2	ng/ml	ng/ml
42)	L9 AR-1268-2	8.222	7.063	8848982	15513380	47.689	77.466 #
43)	L9 AR-1268-3	8.442	7.286	10172758	5270991	65.266	31.649 #
44)	L9 AR-1268-4	8.844	7.601	5892572	4949894	80.421	66.440
45)	L9 AR-1268-5	9.226	7.895	12586304	12096373	25.172	22.755

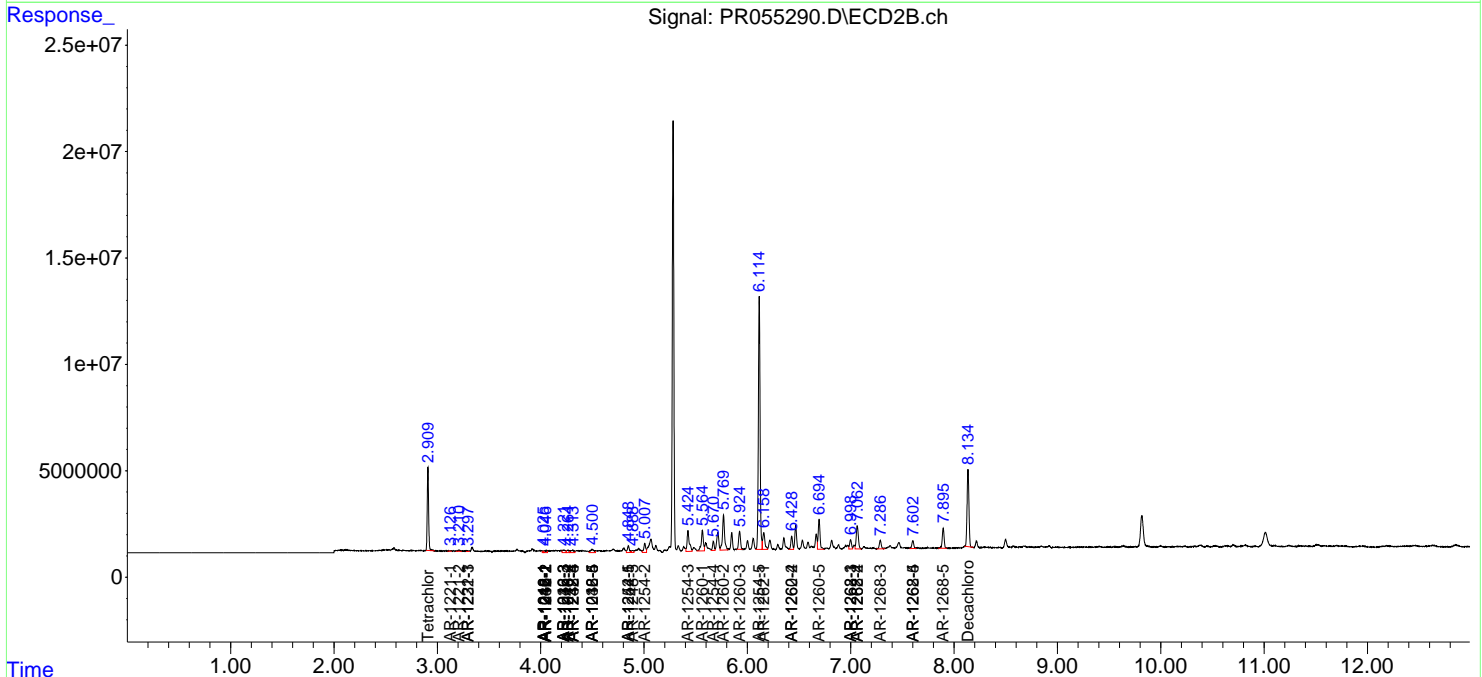
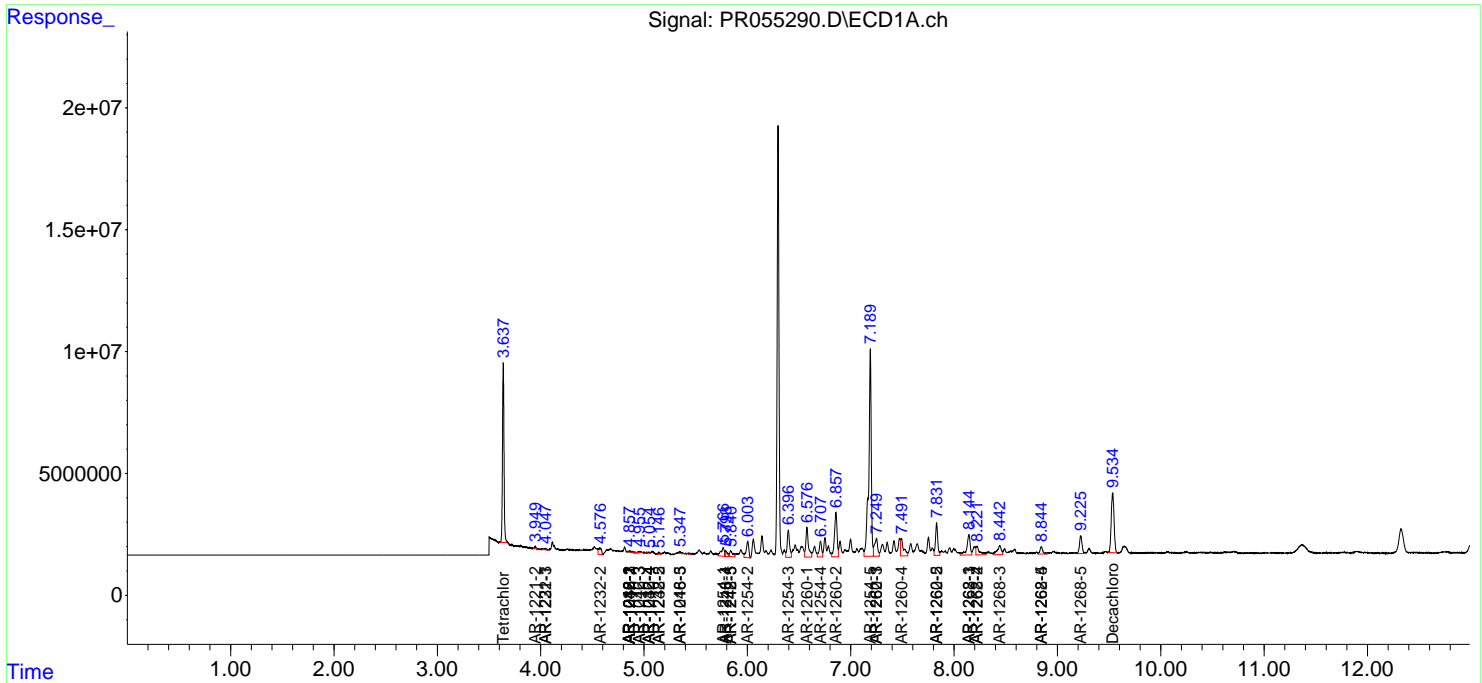
(f)=RT Delta > 1/2 Window (#)=Amounts differ by > 25% (m)=manual int.

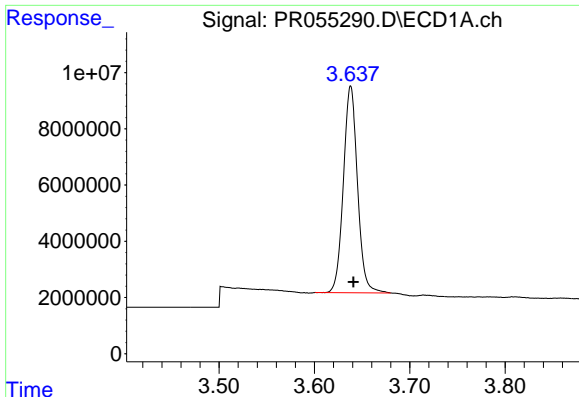
Data Path : Z:\pestpcbsrv\HPCHEM1\ECD_R\Data\PR071422\
 Data File : PR055290.D
 Signal(s) : Signal #1: ECD1A.ch Signal #2: ECD2B.ch
 Acq On : 13 Jul 2022 18:15
 Operator : AJ\MA
 Sample : N3680-06
 Misc :
 ALS Vial : 14 Sample Multiplier: 1

Instrument :
 ECD_R
 ClientSampleId :

Integration File signal 1: autoint1.e
 Integration File signal 2: autoint2.e
 Quant Time: Jul 14 06:35:52 2022
 Quant Method : Z:\pestpcbsrv\HPCHEM1\ECD_R\Method\PR062722.M
 Quant Title : GC EXTRACTABLES
 QLast Update : Mon Jun 27 17:05:06 2022
 Response via : Initial Calibration
 Integrator: ChemStation

Volume Inj. : 2 µl
 Signal #1 Phase : ZB-MR1 Signal #2 Phase: ZB-MR2
 Signal #1 Info : 30Mx0.32mmx 0.50µ Signal #2 Info : 30M x 0.32mm x 0.25µm

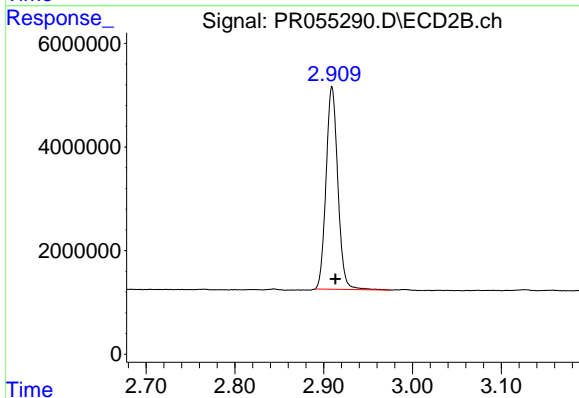




#1 Tetrachloro-m-xylene

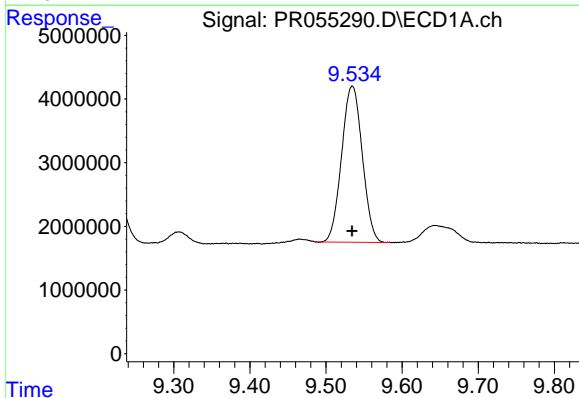
R.T.: 3.638 min
 Delta R.T.: -0.003 min
 Response: 75756783
 Conc: 20.83 ng/ml

Instrument :
 ECD_R
 ClientSampleId :



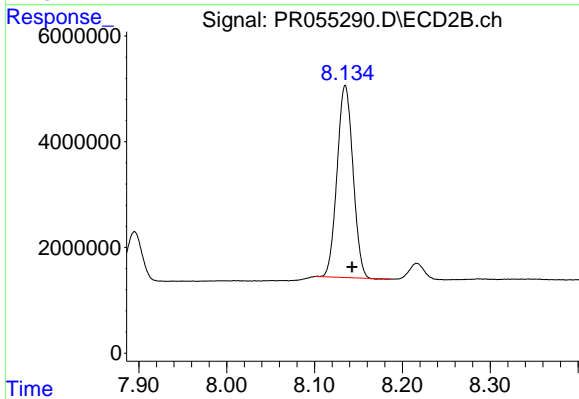
#1 Tetrachloro-m-xylene

R.T.: 2.909 min
 Delta R.T.: -0.004 min
 Response: 36040697
 Conc: 21.59 ng/ml



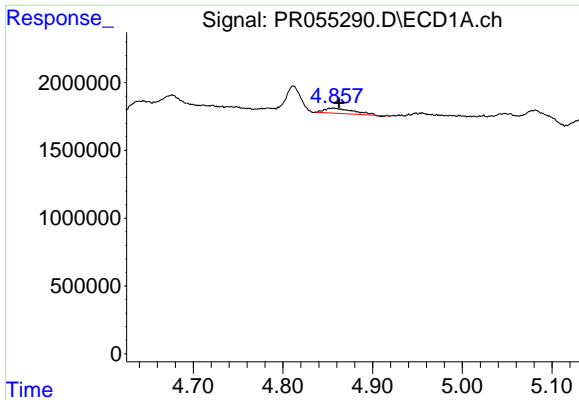
#2 Decachlorobiphenyl

R.T.: 9.534 min
 Delta R.T.: 0.000 min
 Response: 46219520
 Conc: 32.05 ng/ml



#2 Decachlorobiphenyl

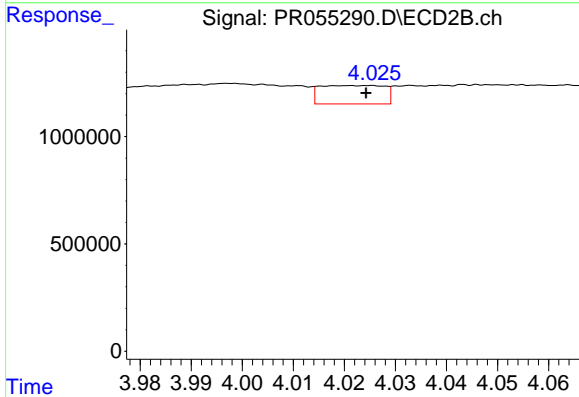
R.T.: 8.135 min
 Delta R.T.: -0.008 min
 Response: 45697902
 Conc: 32.52 ng/ml



#3 AR-1016-1

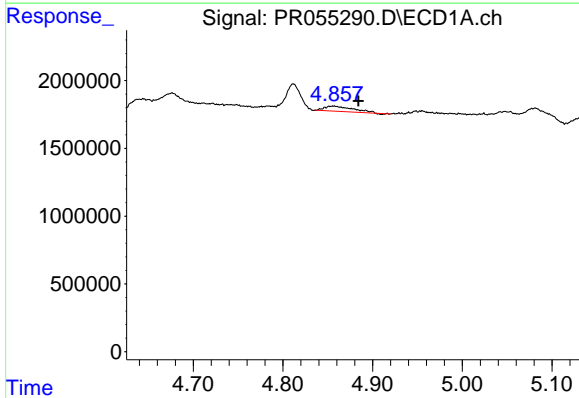
R.T.: 4.856 min
 Delta R.T.: -0.006 min
 Response: 801909
 Conc: 7.84 ng/ml

Instrument :
 ECD_R
 ClientSampleId :



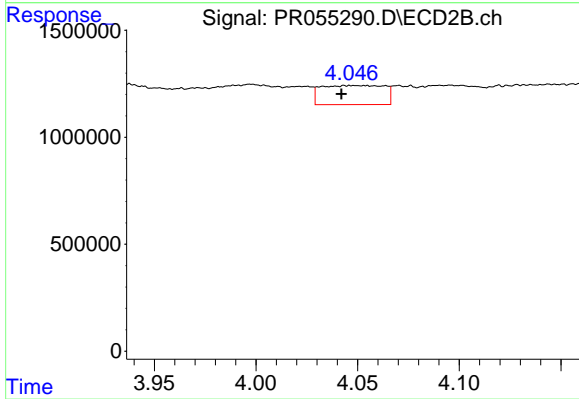
#3 AR-1016-1

R.T.: 4.024 min
 Delta R.T.: 0.000 min
 Response: 748650
 Conc: 13.06 ng/ml



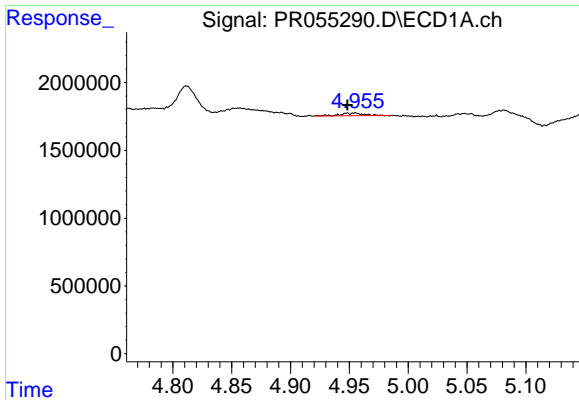
#4 AR-1016-2

R.T.: 4.856 min
 Delta R.T.: -0.028 min
 Response: 801909
 Conc: 5.53 ng/ml



#4 AR-1016-2

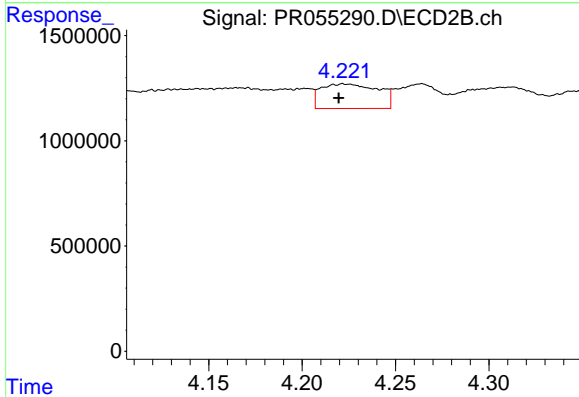
R.T.: 4.053 min
 Delta R.T.: 0.011 min
 Response: 1935657
 Conc: 24.78 ng/ml



#5 AR-1016-3

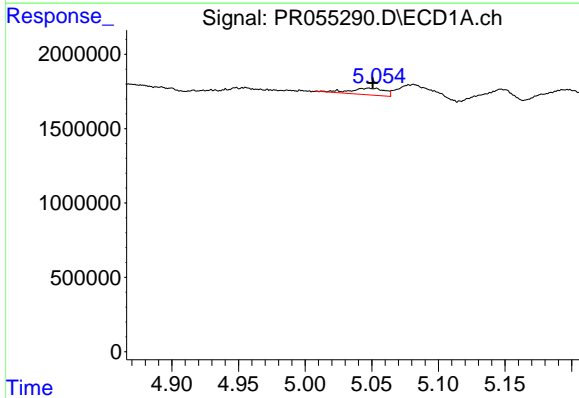
R.T.: 4.953 min
 Delta R.T.: 0.005 min
 Response: 264463
 Conc: 3.03 ng/ml

Instrument :
 ECD_R
 ClientSampleId :



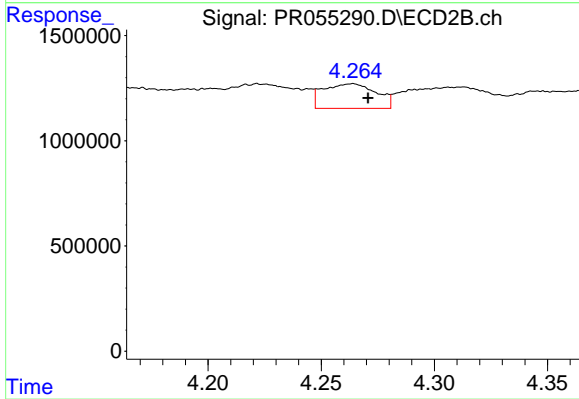
#5 AR-1016-3

R.T.: 4.222 min
 Delta R.T.: 0.003 min
 Response: 2497813
 Conc: 58.70 ng/ml



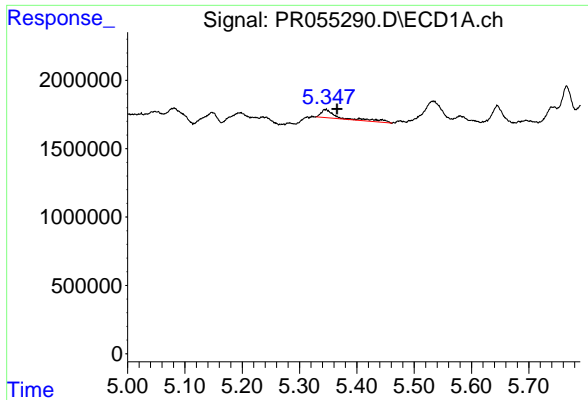
#6 AR-1016-4

R.T.: 5.048 min
 Delta R.T.: -0.003 min
 Response: 806335
 Conc: 11.12 ng/ml



#6 AR-1016-4

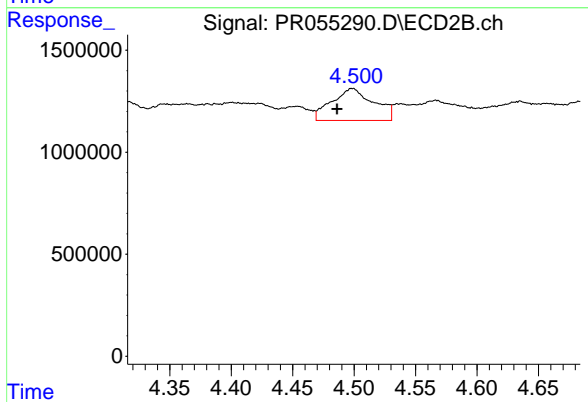
R.T.: 4.264 min
 Delta R.T.: -0.007 min
 Response: 1906939
 Conc: 57.70 ng/ml



#7 AR-1016-5

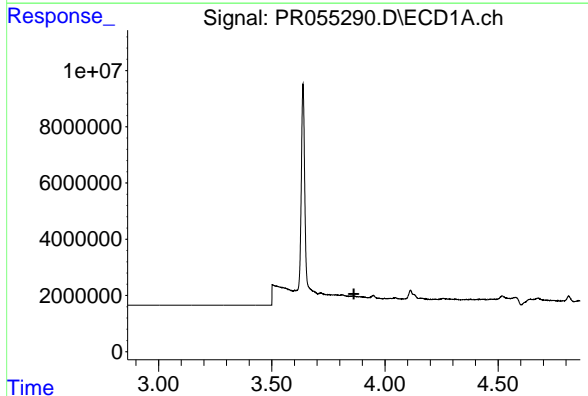
R.T.: 5.346 min
 Delta R.T.: -0.020 min
 Response: 1336926
 Conc: 20.73 ng/ml

Instrument :
 ECD_R
 ClientSampleId :



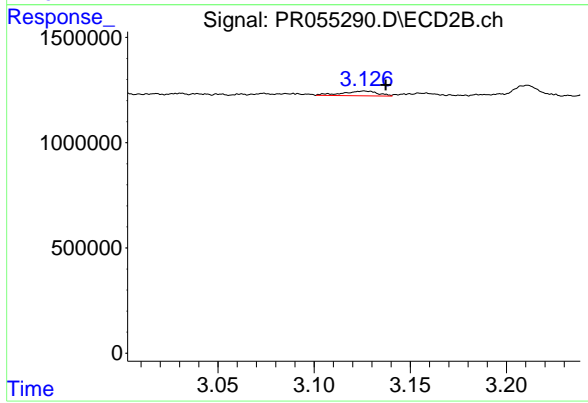
#7 AR-1016-5

R.T.: 4.499 min
 Delta R.T.: 0.013 min
 Response: 3736180
 Conc: 88.44 ng/ml



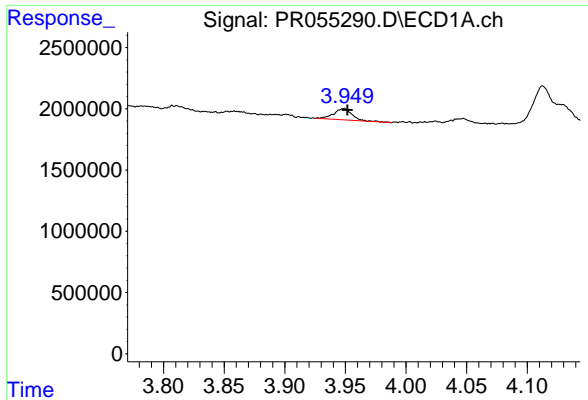
#8 AR-1221-1

R.T.: 0.000 min
 Exp R.T. : 3.863 min
 Response: 0
 Conc: N.D.



#8 AR-1221-1

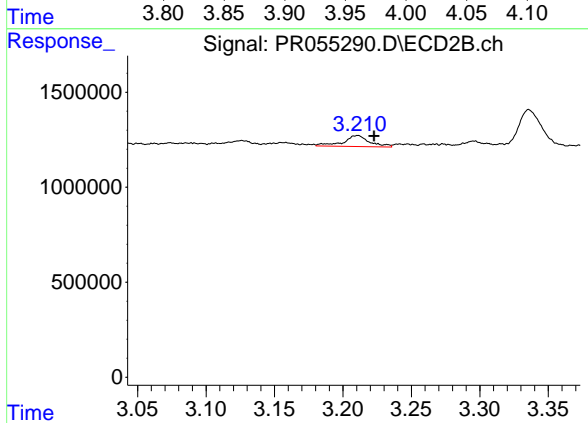
R.T.: 3.126 min
 Delta R.T.: -0.011 min
 Response: 285362
 Conc: 13.80 ng/ml



#9 AR-1221-2

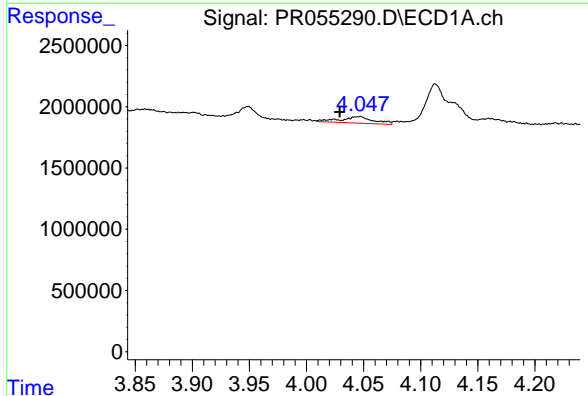
R.T.: 3.948 min
 Delta R.T.: -0.003 min
 Response: 991810
 Conc: 30.23 ng/ml

Instrument :
 ECD_R
 ClientSampleId :



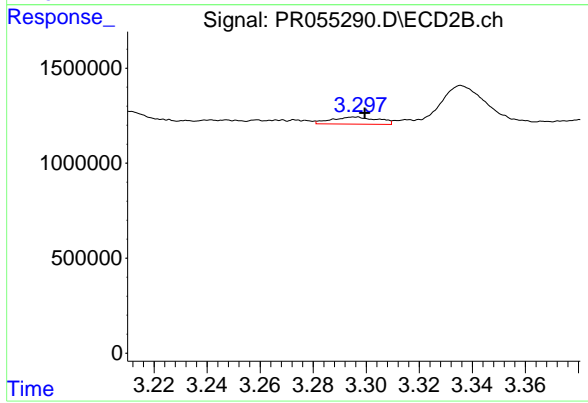
#9 AR-1221-2

R.T.: 3.211 min
 Delta R.T.: -0.012 min
 Response: 781100
 Conc: 49.57 ng/ml



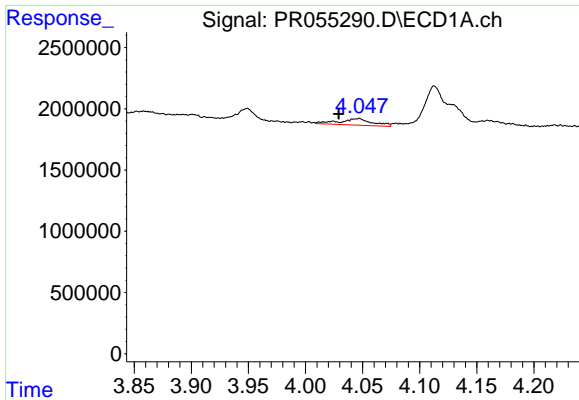
#10 AR-1221-3

R.T.: 4.046 min
 Delta R.T.: 0.016 min
 Response: 1062393
 Conc: 10.51 ng/ml



#10 AR-1221-3

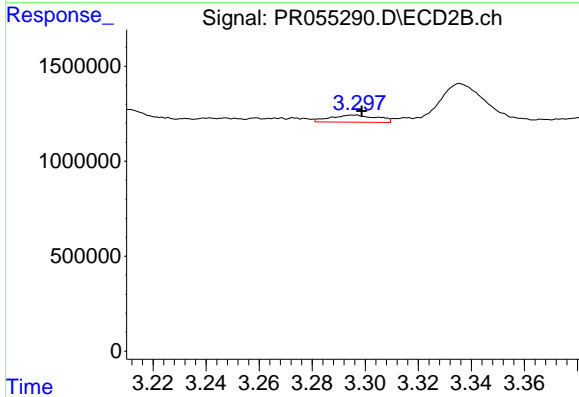
R.T.: 3.296 min
 Delta R.T.: -0.004 min
 Response: 454480
 Conc: 9.41 ng/ml



#11 AR-1232-1

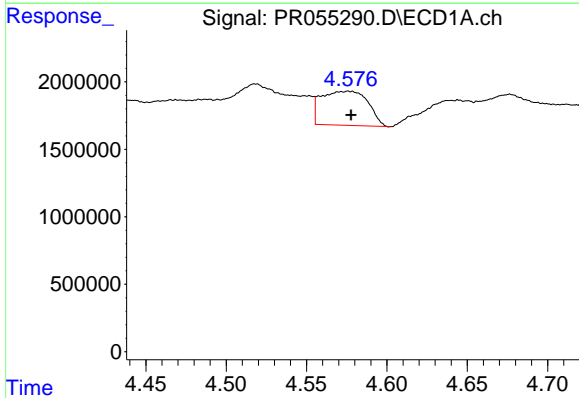
R.T.: 4.046 min
 Delta R.T.: 0.017 min
 Response: 1062393
 Conc: 11.45 ng/ml

Instrument :
 ECD_R
 ClientSampleId :



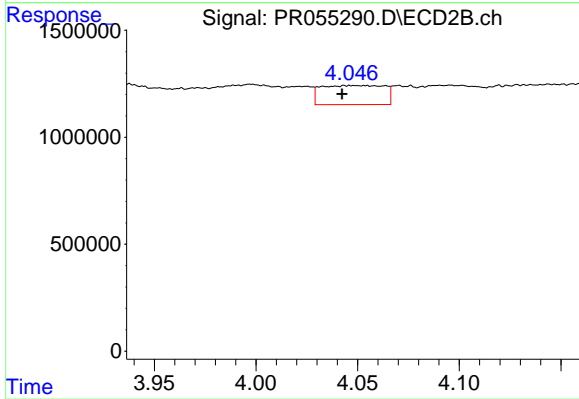
#11 AR-1232-1

R.T.: 3.296 min
 Delta R.T.: -0.003 min
 Response: 454480
 Conc: 10.29 ng/ml



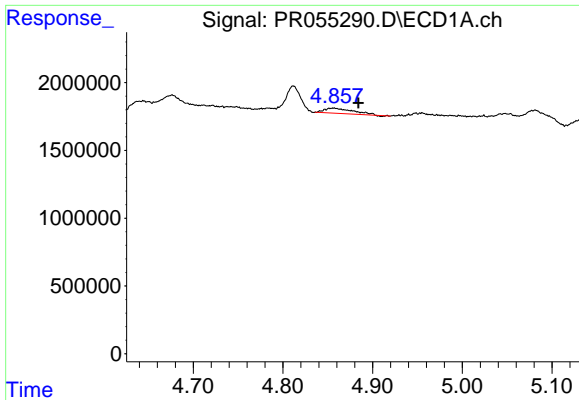
#12 AR-1232-2

R.T.: 4.575 min
 Delta R.T.: -0.002 min
 Response: 5135653
 Conc: 117.77 ng/ml



#12 AR-1232-2

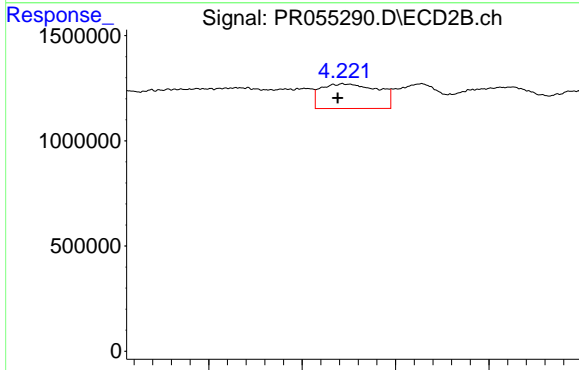
R.T.: 4.053 min
 Delta R.T.: 0.011 min
 Response: 1935657
 Conc: 48.23 ng/ml



#13 AR-1232-3

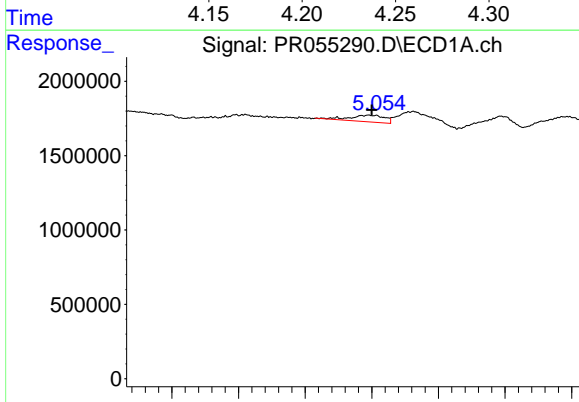
R.T.: 4.856 min
 Delta R.T.: -0.028 min
 Response: 801909
 Conc: 10.54 ng/ml

Instrument :
 ECD_R
 ClientSampleId :



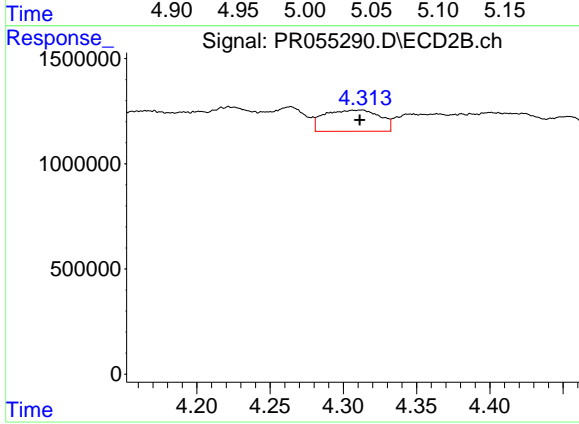
#13 AR-1232-3

R.T.: 4.222 min
 Delta R.T.: 0.003 min
 Response: 2497813
 Conc: 108.07 ng/ml



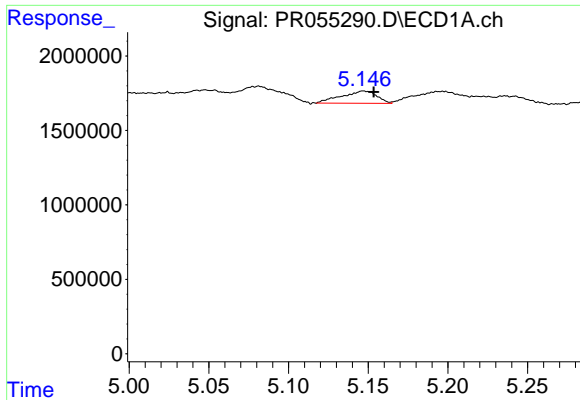
#14 AR-1232-4

R.T.: 5.048 min
 Delta R.T.: -0.002 min
 Response: 806335
 Conc: 22.59 ng/ml



#14 AR-1232-4

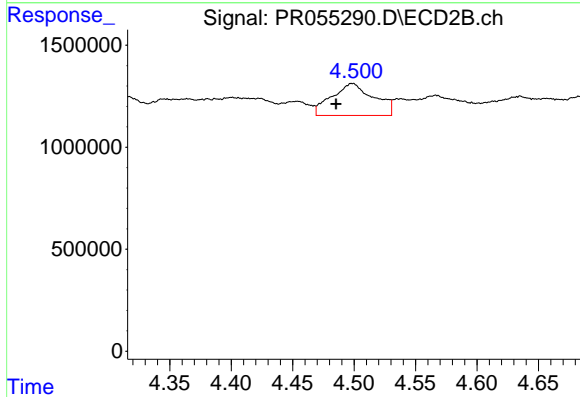
R.T.: 4.312 min
 Delta R.T.: 0.001 min
 Response: 2659047
 Conc: 143.80 ng/ml



#15 AR-1232-5

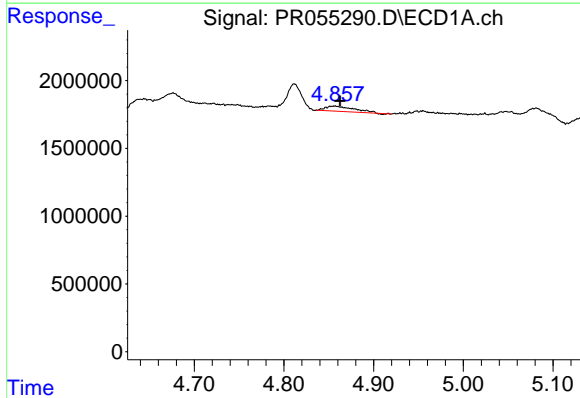
R.T.: 5.148 min
 Delta R.T.: -0.006 min
 Response: 1261105
 Conc: 46.64 ng/ml

Instrument :
 ECD_R
 ClientSampleId :



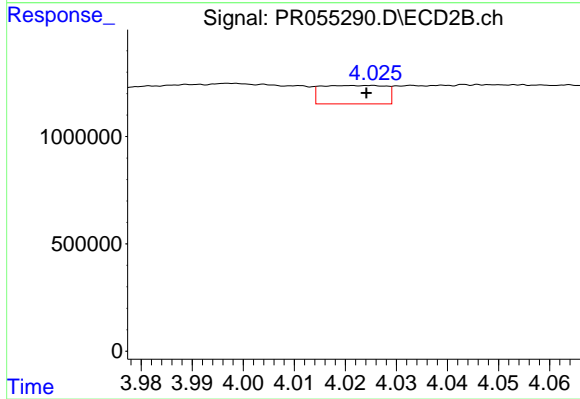
#15 AR-1232-5

R.T.: 4.499 min
 Delta R.T.: 0.013 min
 Response: 3736180
 Conc: 166.61 ng/ml



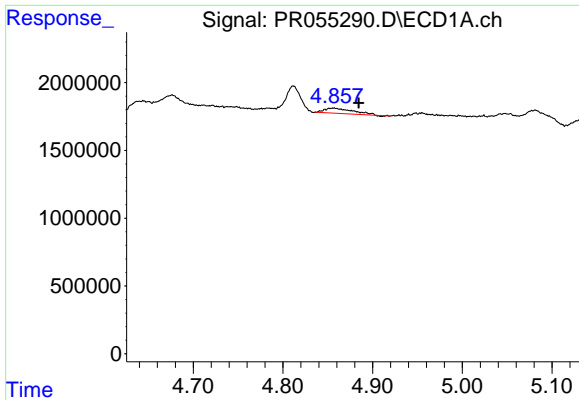
#16 AR-1242-1

R.T.: 4.856 min
 Delta R.T.: -0.006 min
 Response: 801909
 Conc: 9.31 ng/ml



#16 AR-1242-1

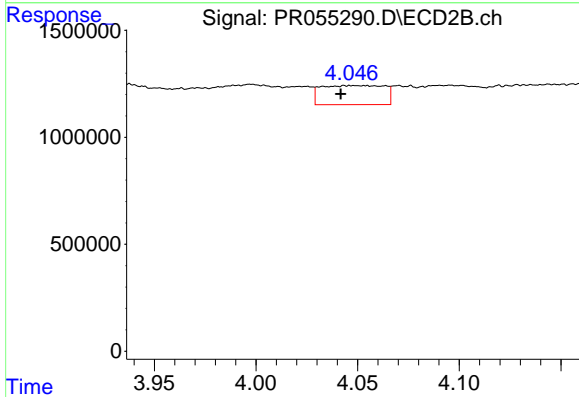
R.T.: 4.024 min
 Delta R.T.: 0.000 min
 Response: 748650
 Conc: 15.62 ng/ml



#17 AR-1242-2

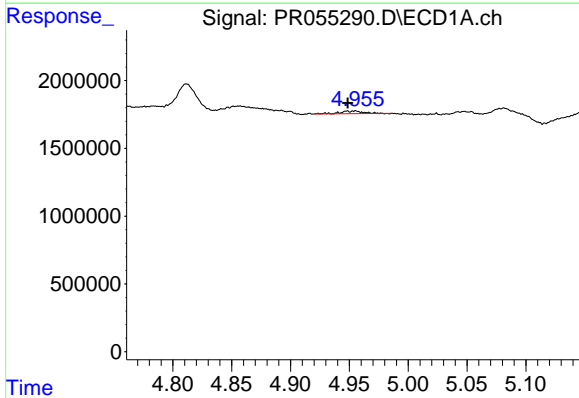
R.T.: 4.856 min
 Delta R.T.: -0.028 min
 Response: 801909
 Conc: 6.61 ng/ml

Instrument :
 ECD_R
 ClientSampleId :



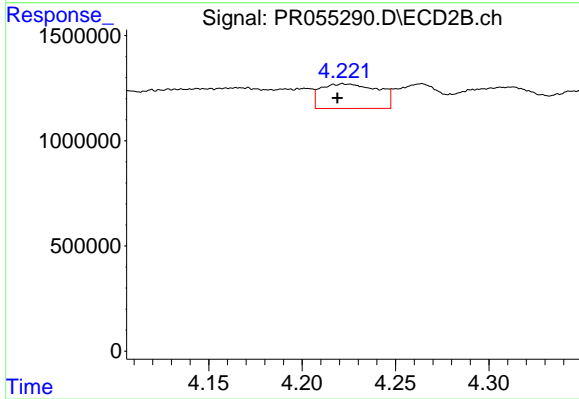
#17 AR-1242-2

R.T.: 4.053 min
 Delta R.T.: 0.012 min
 Response: 1935657
 Conc: 29.72 ng/ml



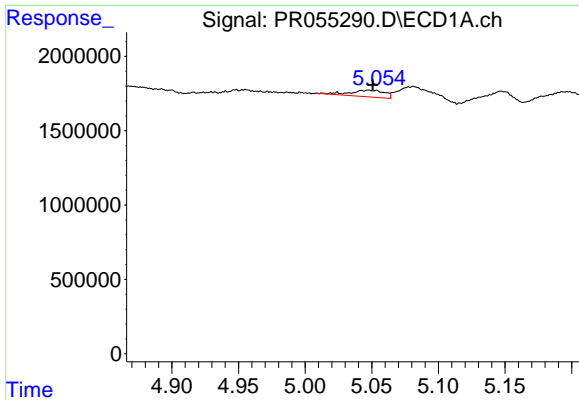
#18 AR-1242-3

R.T.: 4.953 min
 Delta R.T.: 0.005 min
 Response: 264463
 Conc: 3.63 ng/ml



#18 AR-1242-3

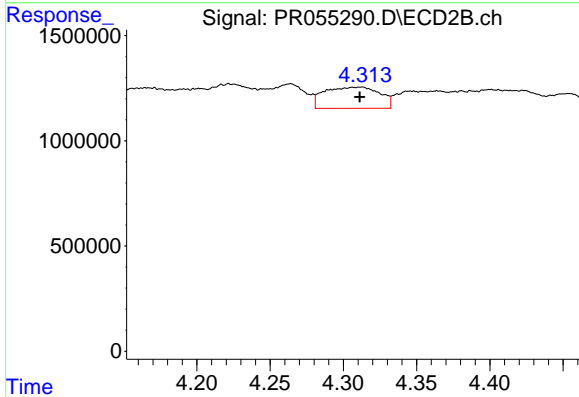
R.T.: 4.222 min
 Delta R.T.: 0.004 min
 Response: 2497813
 Conc: 70.63 ng/ml



#19 AR-1242-4

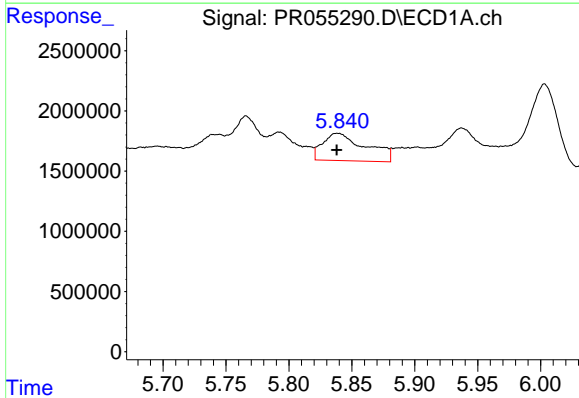
R.T.: 5.048 min
 Delta R.T.: -0.003 min
 Response: 806335
 Conc: 13.62 ng/ml

Instrument :
 ECD_R
 ClientSampleId :



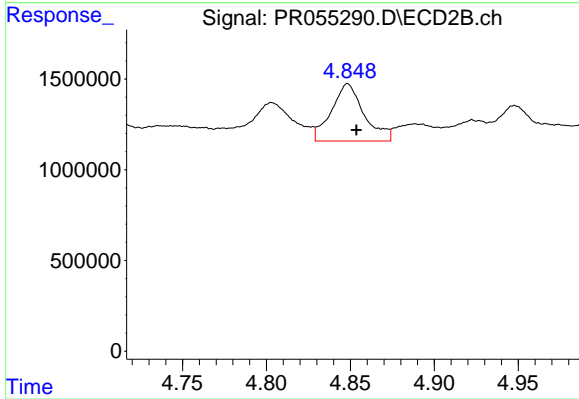
#19 AR-1242-4

R.T.: 4.312 min
 Delta R.T.: 0.000 min
 Response: 2659047
 Conc: 80.80 ng/ml



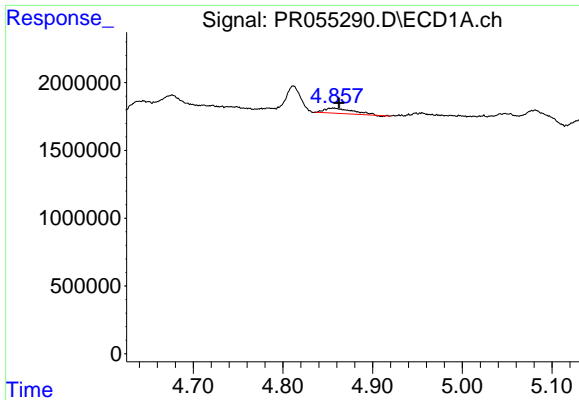
#20 AR-1242-5

R.T.: 5.839 min
 Delta R.T.: 0.000 min
 Response: 5434570
 Conc: 103.77 ng/ml



#20 AR-1242-5

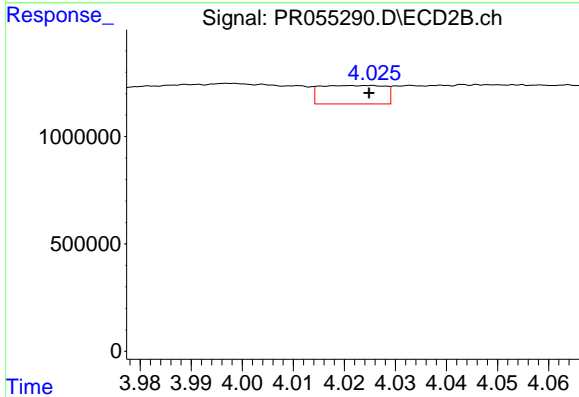
R.T.: 4.848 min
 Delta R.T.: -0.005 min
 Response: 4277996
 Conc: 98.96 ng/ml



#21 AR-1248-1

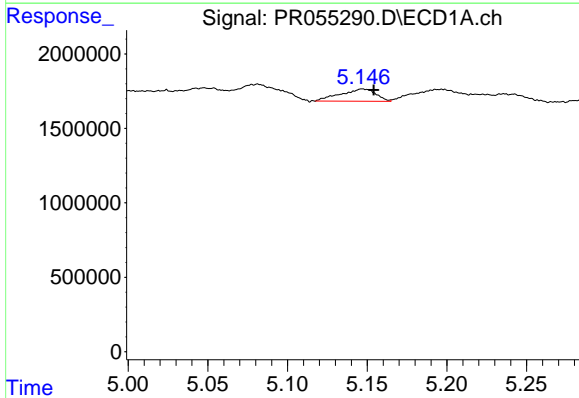
R.T.: 4.856 min
 Delta R.T.: -0.007 min
 Response: 801909
 Conc: 11.92 ng/ml

Instrument :
 ECD_R
 ClientSampleId :



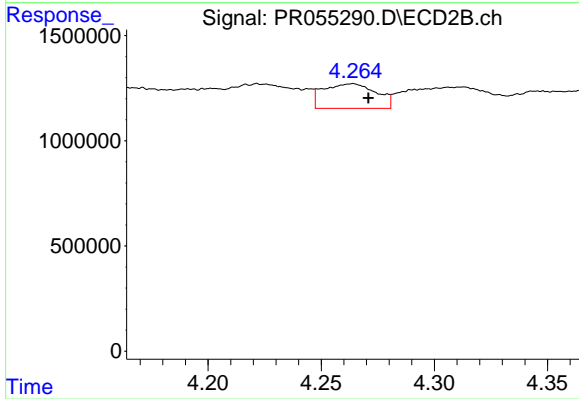
#21 AR-1248-1

R.T.: 4.024 min
 Delta R.T.: 0.000 min
 Response: 748650
 Conc: 20.94 ng/ml



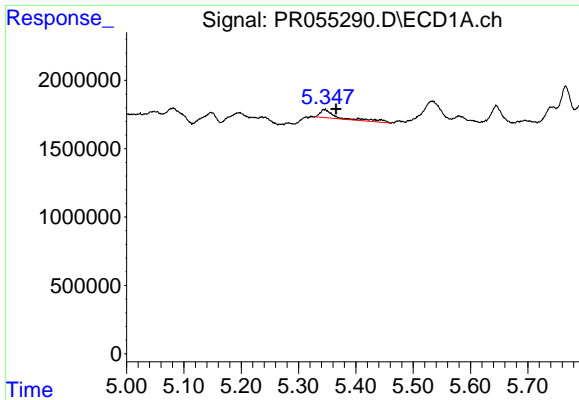
#22 AR-1248-2

R.T.: 5.148 min
 Delta R.T.: -0.007 min
 Response: 1261105
 Conc: 15.33 ng/ml



#22 AR-1248-2

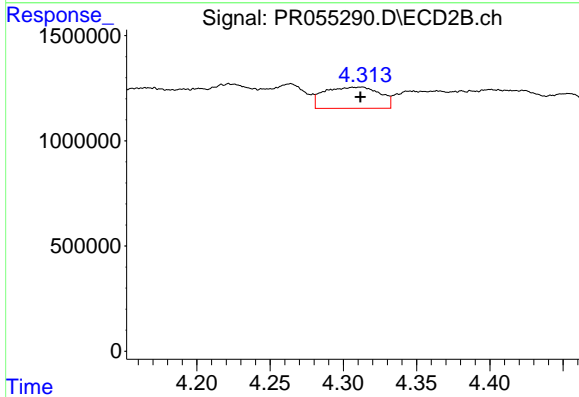
R.T.: 4.264 min
 Delta R.T.: -0.007 min
 Response: 1906939
 Conc: 40.21 ng/ml



#23 AR-1248-3

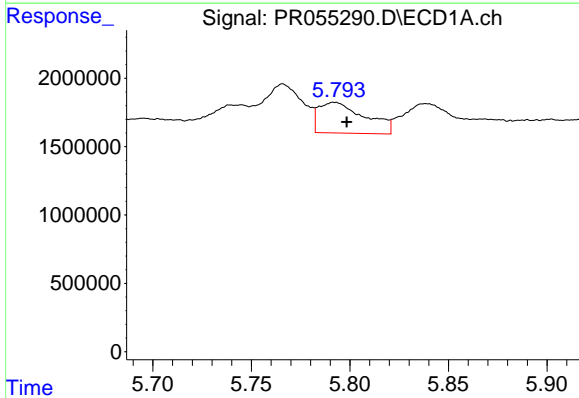
R.T.: 5.346 min
 Delta R.T.: -0.020 min
 Response: 1336926
 Conc: 14.94 ng/ml

Instrument :
 ECD_R
 ClientSampleId :



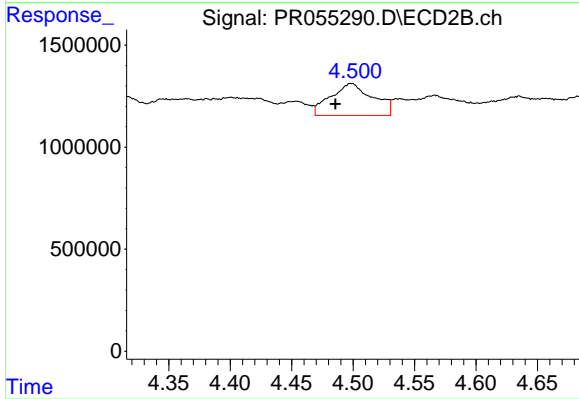
#23 AR-1248-3

R.T.: 4.312 min
 Delta R.T.: 0.000 min
 Response: 2659047
 Conc: 55.89 ng/ml



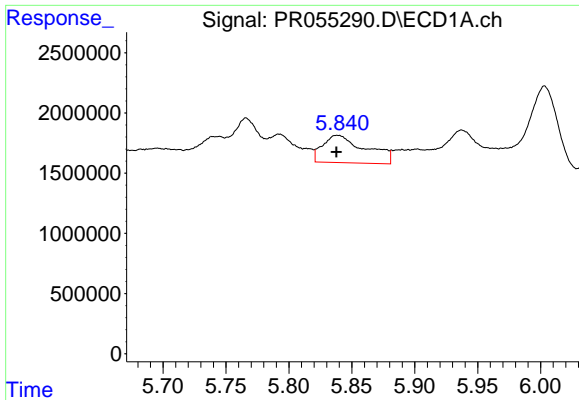
#24 AR-1248-4

R.T.: 5.792 min
 Delta R.T.: -0.006 min
 Response: 3679768
 Conc: 41.50 ng/ml



#24 AR-1248-4

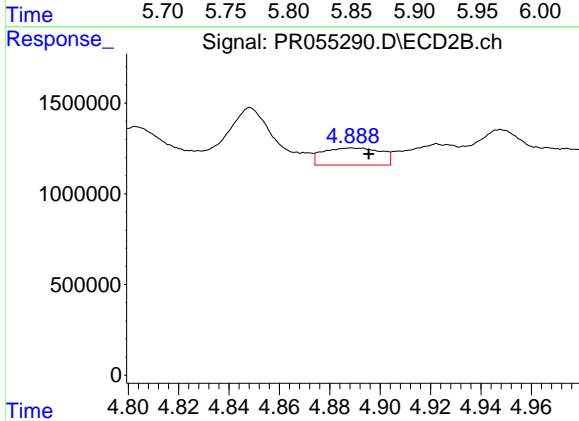
R.T.: 4.499 min
 Delta R.T.: 0.013 min
 Response: 3736180
 Conc: 63.36 ng/ml



#25 AR-1248-5

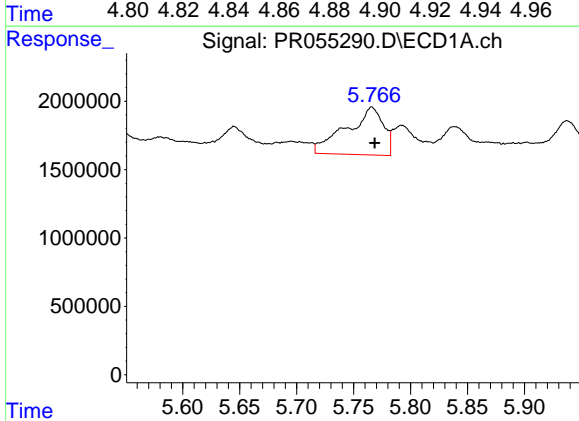
R.T.: 5.839 min
 Delta R.T.: 0.000 min
 Response: 5434570
 Conc: 63.19 ng/ml

Instrument :
 ECD_R
 ClientSampleId :



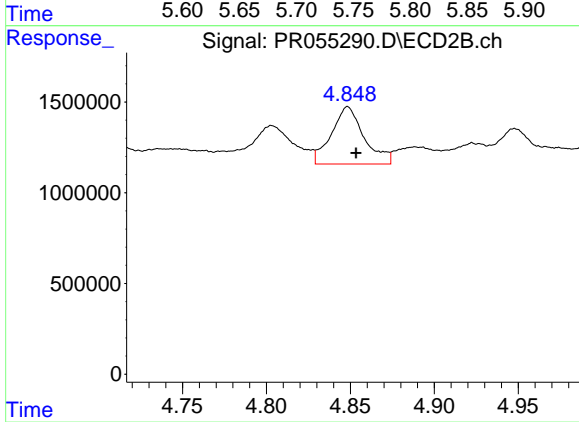
#25 AR-1248-5

R.T.: 4.889 min
 Delta R.T.: -0.007 min
 Response: 1496994
 Conc: 25.91 ng/ml



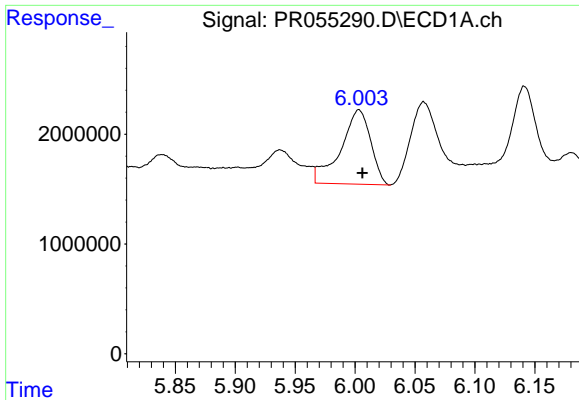
#26 AR-1254-1

R.T.: 5.766 min
 Delta R.T.: -0.002 min
 Response: 7879486
 Conc: 84.64 ng/ml



#26 AR-1254-1

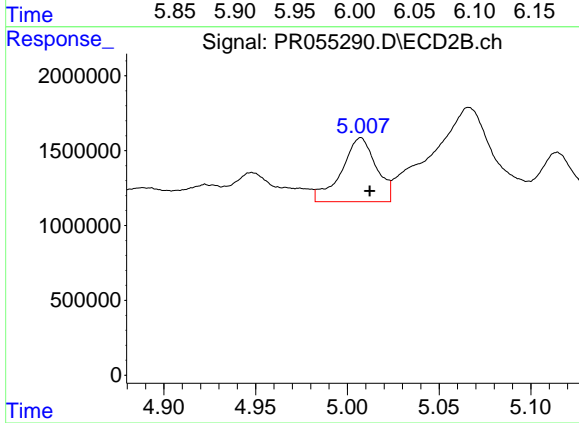
R.T.: 4.848 min
 Delta R.T.: -0.005 min
 Response: 4277996
 Conc: 48.91 ng/ml



#27 AR-1254-2

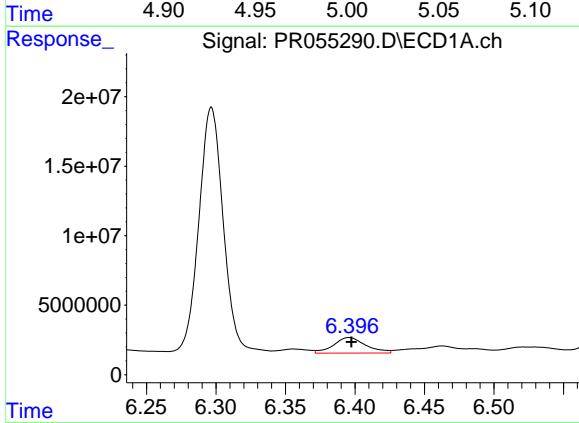
R.T.: 6.003 min
 Delta R.T.: -0.003 min
 Response: 11782985
 Conc: 90.19 ng/ml

Instrument :
 ECD_R
 ClientSampleId :



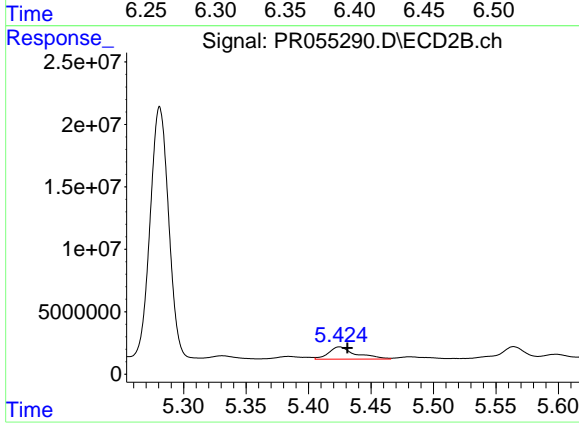
#27 AR-1254-2

R.T.: 5.007 min
 Delta R.T.: -0.005 min
 Response: 5606473
 Conc: 72.68 ng/ml



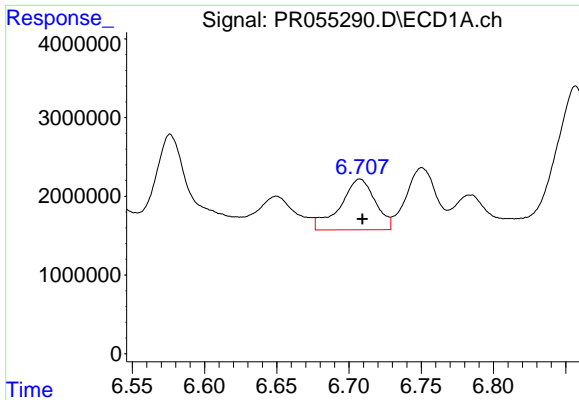
#28 AR-1254-3

R.T.: 6.396 min
 Delta R.T.: -0.002 min
 Response: 18171374
 Conc: 143.85 ng/ml



#28 AR-1254-3

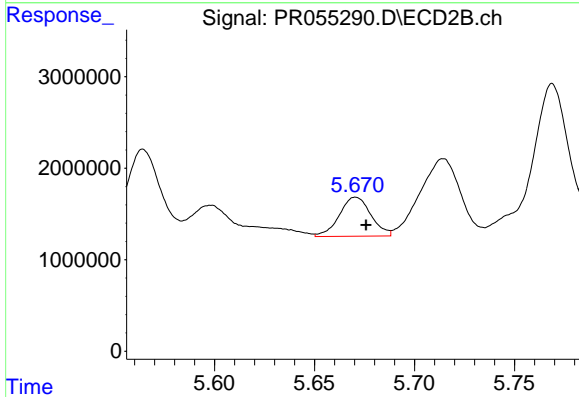
R.T.: 5.425 min
 Delta R.T.: -0.006 min
 Response: 14771186
 Conc: 119.83 ng/ml



#29 AR-1254-4

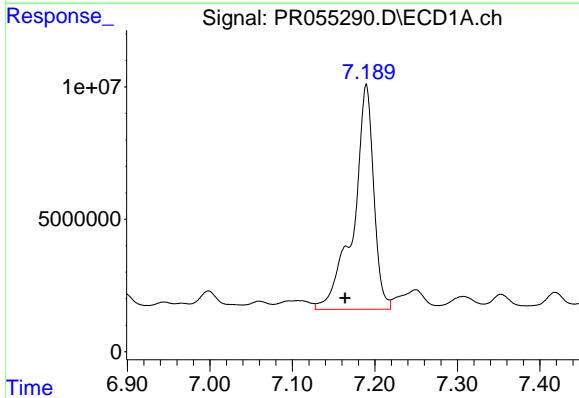
R.T.: 6.707 min
 Delta R.T.: -0.002 min
 Response: 10862154
 Conc: 117.14 ng/ml

Instrument :
 ECD_R
 ClientSampleId :



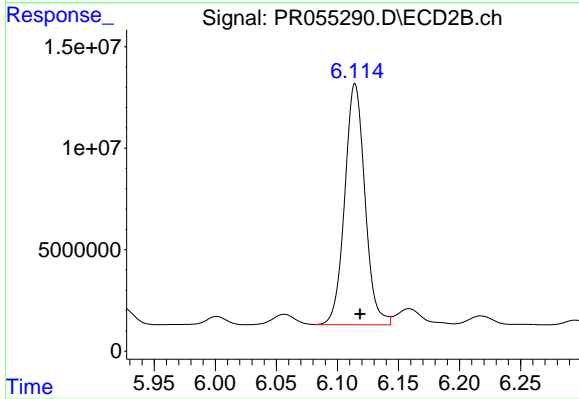
#29 AR-1254-4

R.T.: 5.671 min
 Delta R.T.: -0.005 min
 Response: 4693878
 Conc: 59.65 ng/ml



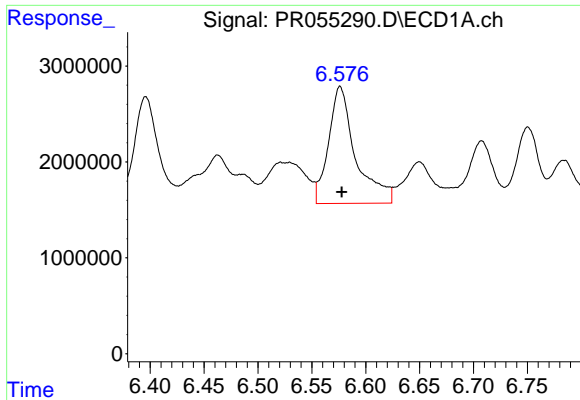
#30 AR-1254-5

R.T.: 7.190 min
 Delta R.T.: 0.026 min
 Response: 144168120
 Conc: 1466.54 ng/ml



#30 AR-1254-5

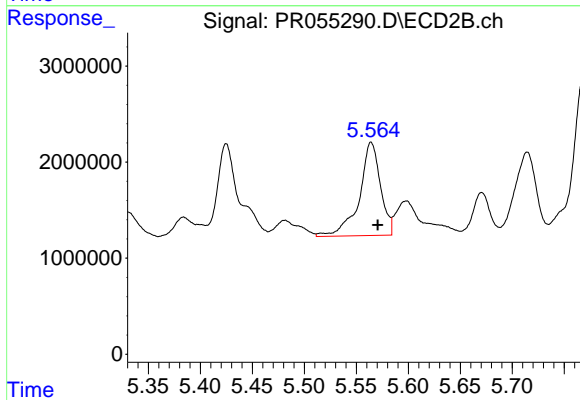
R.T.: 6.114 min
 Delta R.T.: -0.004 min
 Response: 136727766
 Conc: 1195.18 ng/ml



#31 AR-1260-1

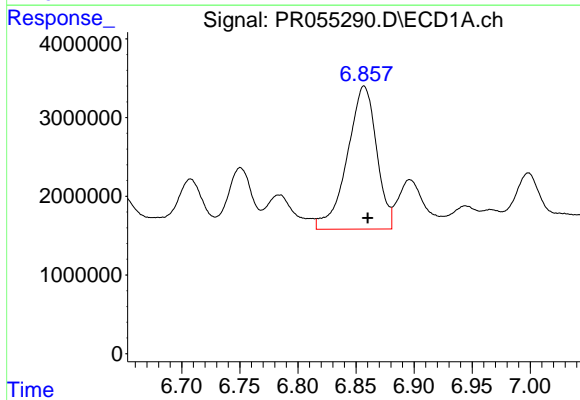
R.T.: 6.576 min
 Delta R.T.: -0.001 min
 Response: 21299767
 Conc: 244.62 ng/ml

Instrument :
 ECD_R
 ClientSampleId :



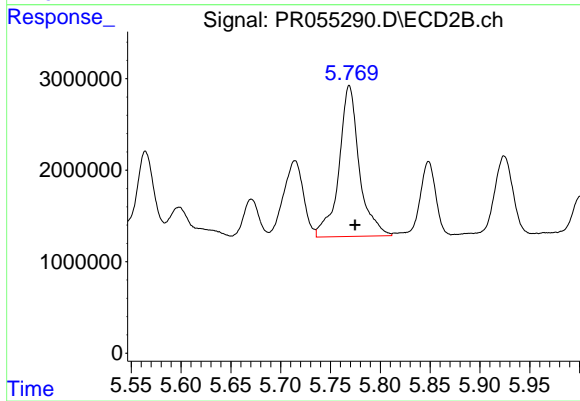
#31 AR-1260-1

R.T.: 5.564 min
 Delta R.T.: -0.007 min
 Response: 13769614
 Conc: 174.22 ng/ml



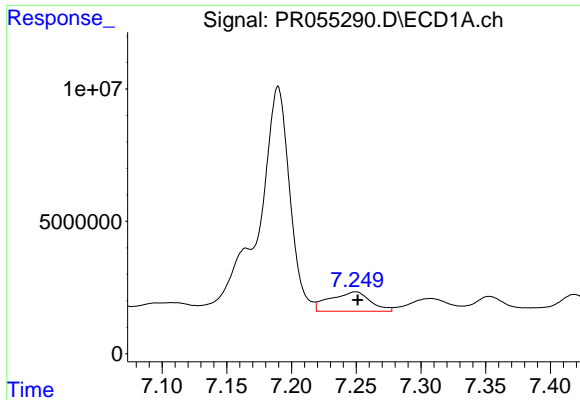
#32 AR-1260-2

R.T.: 6.857 min
 Delta R.T.: -0.003 min
 Response: 31885335
 Conc: 318.29 ng/ml



#32 AR-1260-2

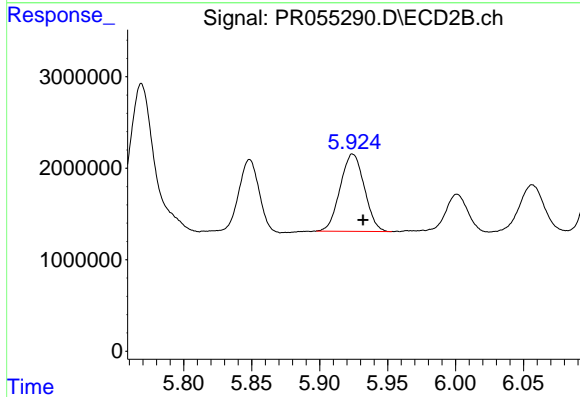
R.T.: 5.769 min
 Delta R.T.: -0.006 min
 Response: 23411264
 Conc: 248.41 ng/ml



#33 AR-1260-3

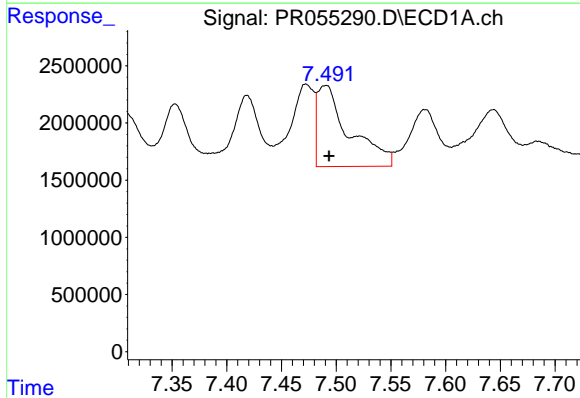
R.T.: 7.249 min
 Delta R.T.: -0.002 min
 Response: 15945926
 Conc: 237.58 ng/ml

Instrument :
 ECD_R
 ClientSampleId :



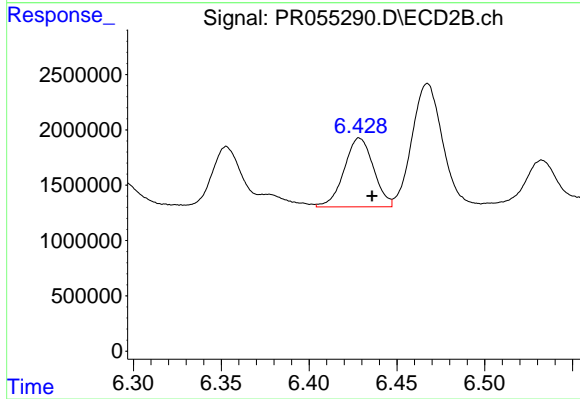
#33 AR-1260-3

R.T.: 5.924 min
 Delta R.T.: -0.007 min
 Response: 10466943
 Conc: 117.22 ng/ml



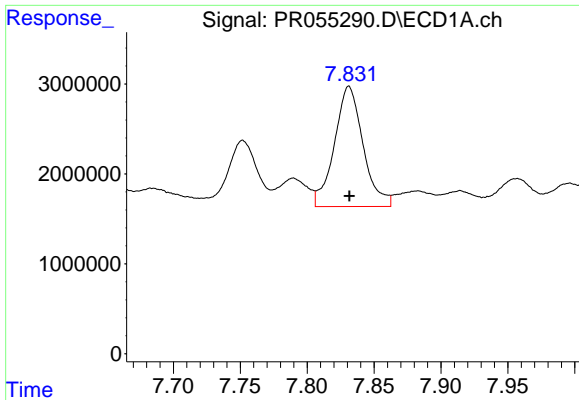
#34 AR-1260-4

R.T.: 7.490 min
 Delta R.T.: -0.003 min
 Response: 14473056
 Conc: 179.88 ng/ml



#34 AR-1260-4

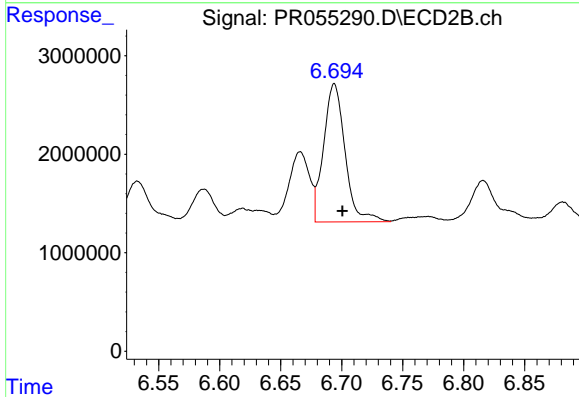
R.T.: 6.429 min
 Delta R.T.: -0.007 min
 Response: 7234117
 Conc: 105.10 ng/ml



#35 AR-1260-5

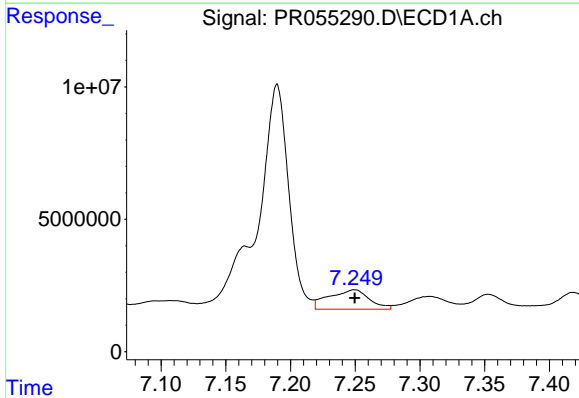
R.T.: 7.831 min
 Delta R.T.: 0.000 min
 Response: 19958810
 Conc: 130.30 ng/ml

Instrument :
 ECD_R
 ClientSampleId :



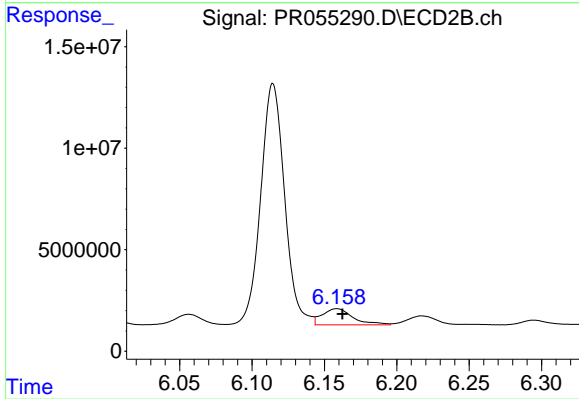
#35 AR-1260-5

R.T.: 6.694 min
 Delta R.T.: -0.007 min
 Response: 17193193
 Conc: 104.80 ng/ml



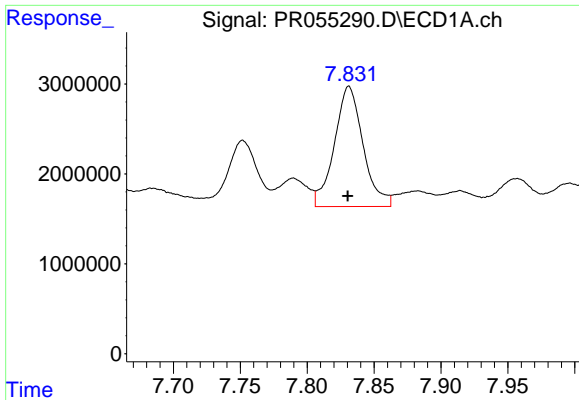
#36 AR-1262-1

R.T.: 7.249 min
 Delta R.T.: 0.000 min
 Response: 15945926
 Conc: 154.14 ng/ml



#36 AR-1262-1

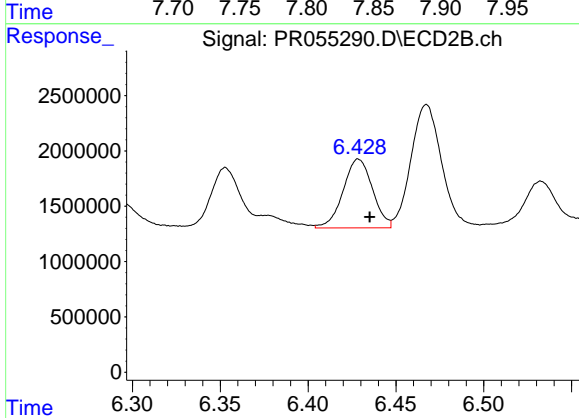
R.T.: 6.159 min
 Delta R.T.: -0.004 min
 Response: 11734709
 Conc: 109.68 ng/ml



#37 AR-1262-2

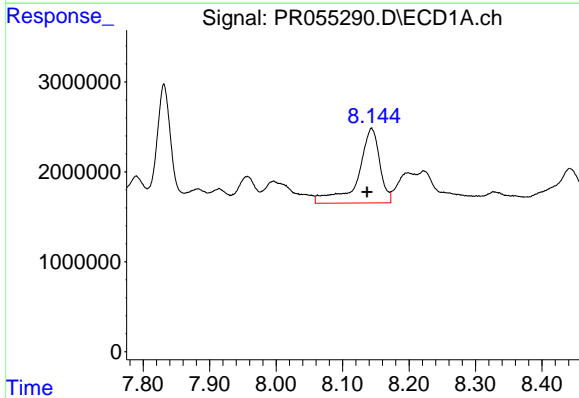
R.T.: 7.831 min
 Delta R.T.: 0.001 min
 Response: 19958810
 Conc: 110.85 ng/ml

Instrument :
 ECD_R
 ClientSampleId :



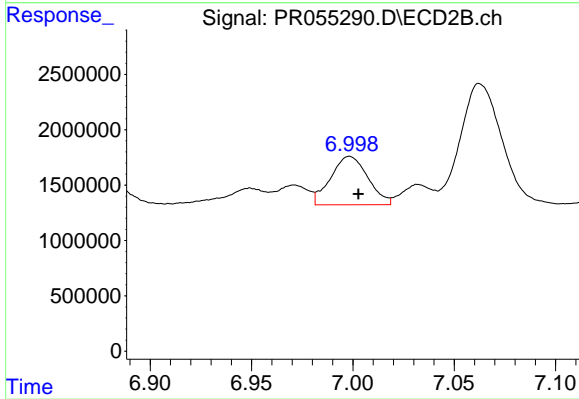
#37 AR-1262-2

R.T.: 6.429 min
 Delta R.T.: -0.006 min
 Response: 7234117
 Conc: 74.33 ng/ml



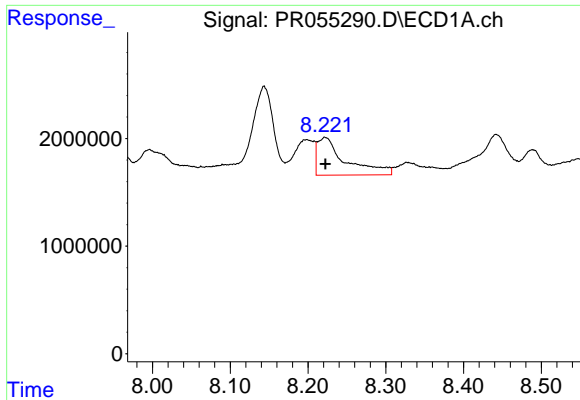
#38 AR-1262-3

R.T.: 8.144 min
 Delta R.T.: 0.007 min
 Response: 18799077
 Conc: 150.78 ng/ml



#38 AR-1262-3

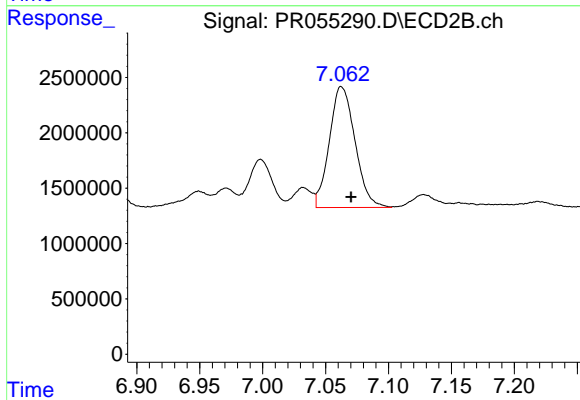
R.T.: 6.998 min
 Delta R.T.: -0.004 min
 Response: 5579490
 Conc: 72.70 ng/ml



#39 AR-1262-4

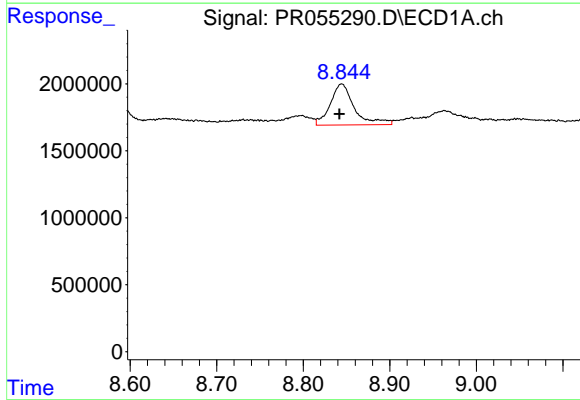
R.T.: 8.222 min
 Delta R.T.: 0.000 min
 Response: 8848982
 Conc: 158.14 ng/ml

Instrument :
 ECD_R
 ClientSampleId :



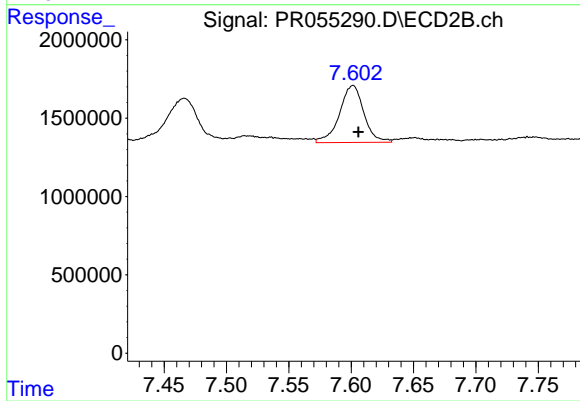
#39 AR-1262-4

R.T.: 7.063 min
 Delta R.T.: -0.008 min
 Response: 15513380
 Conc: 106.07 ng/ml



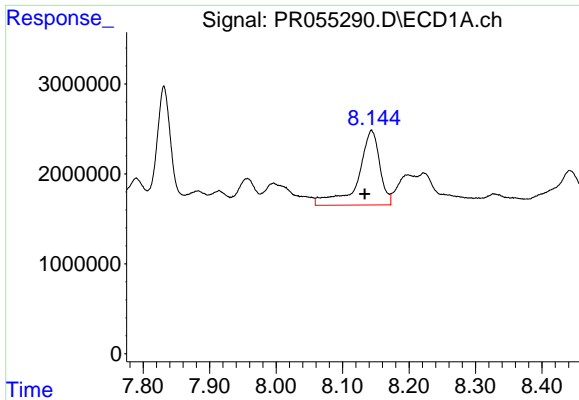
#40 AR-1262-5

R.T.: 8.844 min
 Delta R.T.: 0.002 min
 Response: 5892572
 Conc: 86.18 ng/ml



#40 AR-1262-5

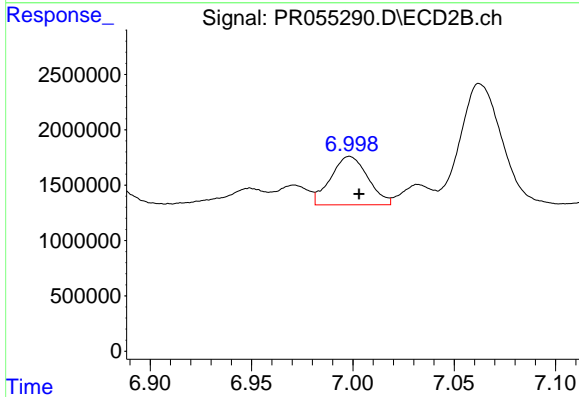
R.T.: 7.601 min
 Delta R.T.: -0.004 min
 Response: 4949894
 Conc: 71.70 ng/ml



#41 AR-1268-1

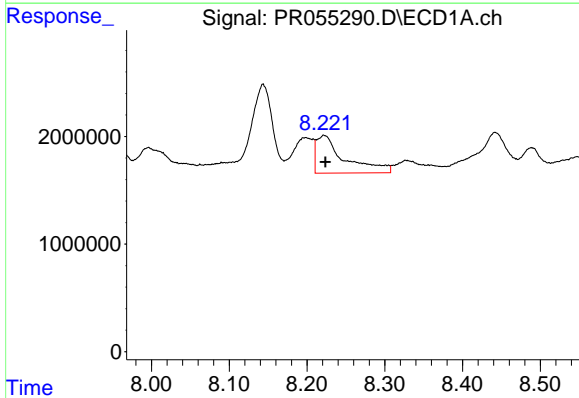
R.T.: 8.144 min
 Delta R.T.: 0.010 min
 Response: 18799077
 Conc: 93.14 ng/ml

Instrument :
 ECD_R
 ClientSampleId :



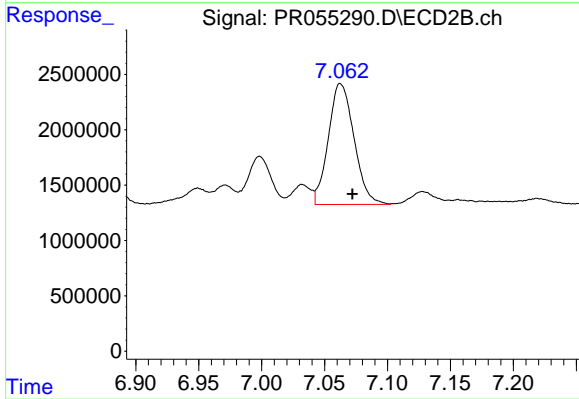
#41 AR-1268-1

R.T.: 6.998 min
 Delta R.T.: -0.005 min
 Response: 5579490
 Conc: 25.61 ng/ml



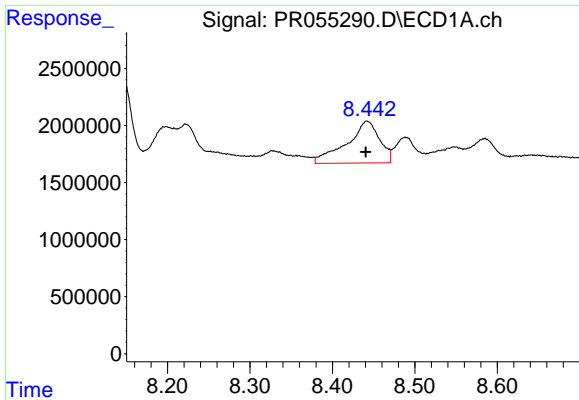
#42 AR-1268-2

R.T.: 8.222 min
 Delta R.T.: -0.002 min
 Response: 8848982
 Conc: 47.69 ng/ml



#42 AR-1268-2

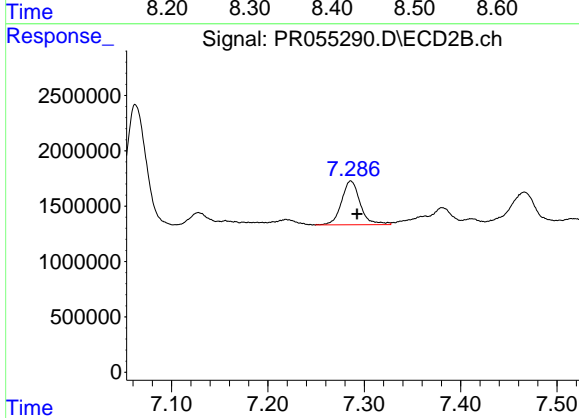
R.T.: 7.063 min
 Delta R.T.: -0.009 min
 Response: 15513380
 Conc: 77.47 ng/ml



#43 AR-1268-3

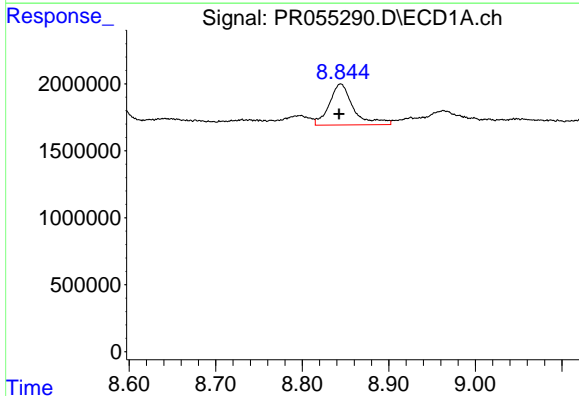
R.T.: 8.442 min
 Delta R.T.: 0.002 min
 Response: 10172758
 Conc: 65.27 ng/ml

Instrument :
 ECD_R
 ClientSampleId :



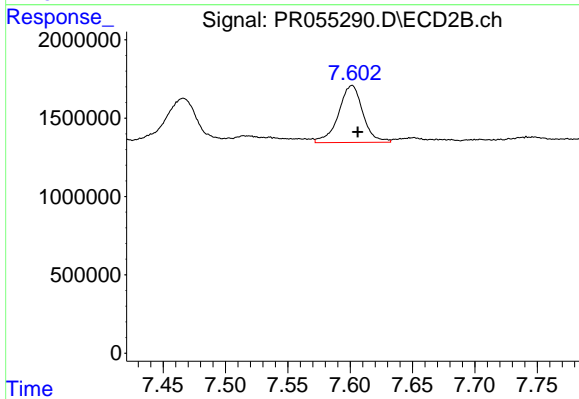
#43 AR-1268-3

R.T.: 7.286 min
 Delta R.T.: -0.006 min
 Response: 5270991
 Conc: 31.65 ng/ml



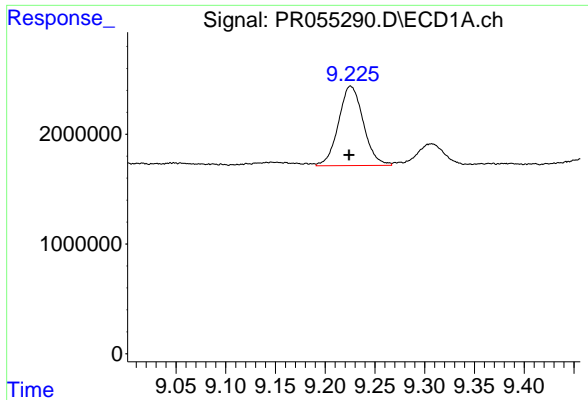
#44 AR-1268-4

R.T.: 8.844 min
 Delta R.T.: 0.002 min
 Response: 5892572
 Conc: 80.42 ng/ml



#44 AR-1268-4

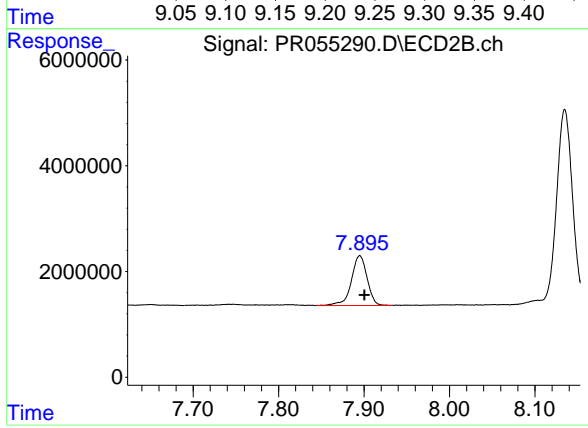
R.T.: 7.601 min
 Delta R.T.: -0.005 min
 Response: 4949894
 Conc: 66.44 ng/ml



#45 AR-1268-5

R.T.: 9.226 min
Delta R.T.: 0.002 min
Response: 12586304
Conc: 25.17 ng/ml

Instrument :
ECD_R
ClientSampleId :



#45 AR-1268-5

R.T.: 7.895 min
Delta R.T.: -0.005 min
Response: 12096373
Conc: 22.76 ng/ml