

Data Path : Z:\pestpcbsrv\HPCHEM1\ECD_R\Data\PR071520\
 Data File : PR046183.D
 Signal(s) : Signal #1: ECD1A.ch Signal #2: ECD2B.ch
 Acq On : 15 Jul 2020 12:38
 Operator : AJ\MA
 Sample : I.BLK
 Misc :
 ALS Vial : 2 Sample Multiplier: 1

Instrument :
 ECD_R
 ClientSampleId :
 I.BLK

Integration File signal 1: autoint1.e
 Integration File signal 2: autoint2.e
 Quant Time: Jul 16 04:10:46 2020
 Quant Method : Z:\pestpcbsrv\HPCHEM1\ECD_R\Method\PR071520.M
 Quant Title : GC EXTRACTABLES
 QLast Update : Thu Jul 16 04:01:55 2020
 Response via : Initial Calibration
 Integrator: ChemStation

Volume Inj. : 2 µl
 Signal #1 Phase : ZB-MR1 Signal #2 Phase: ZB-MR2
 Signal #1 Info : 30Mx0.32mmx 0.50µ Signal #2 Info : 30M x 0.32mm x 0.25µm

Compound	RT#1	RT#2	Resp#1	Resp#2	ng/ml	ng/ml

System Monitoring Compounds						
1) SA Tetrachlo...	4.766	3.989	27999069	190.9E6	15.221	15.511
2) SA Decachlor...	10.771	9.118	39596577	306.7E6	20.032	19.809

Target Compounds

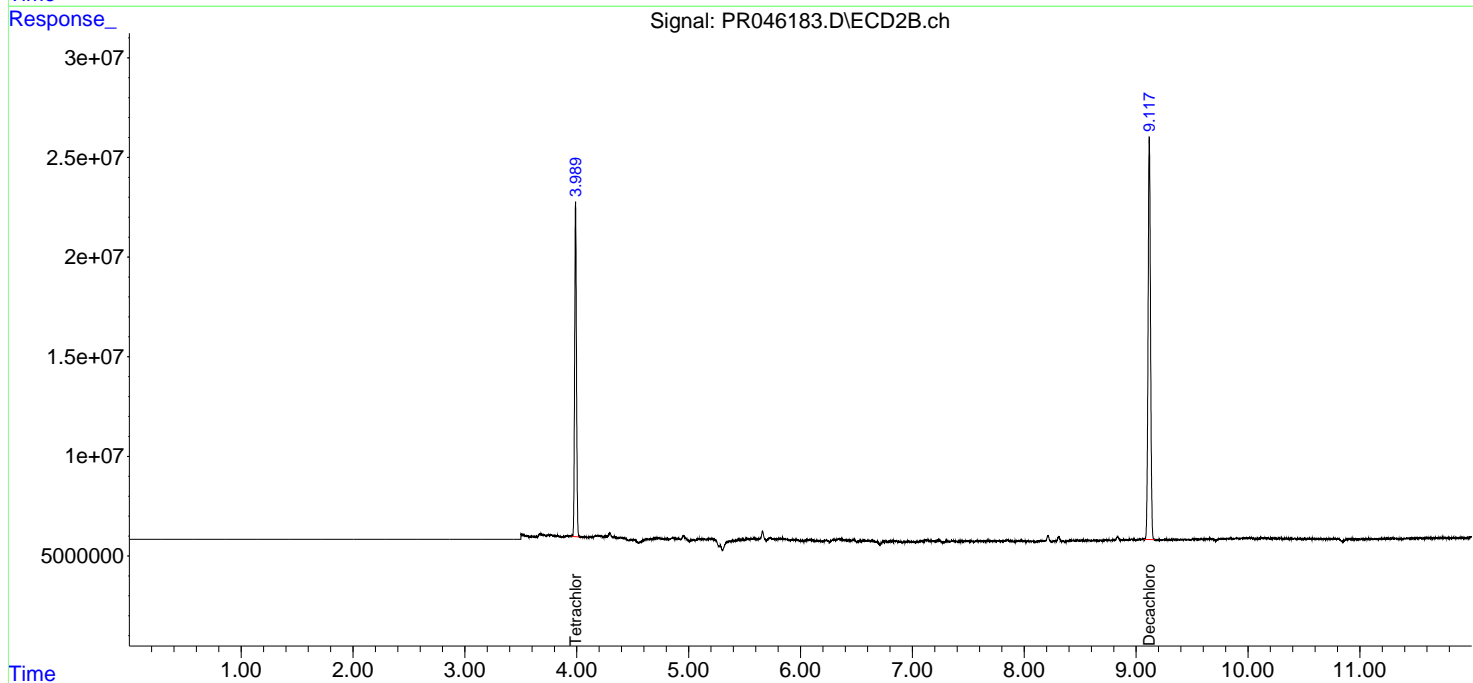
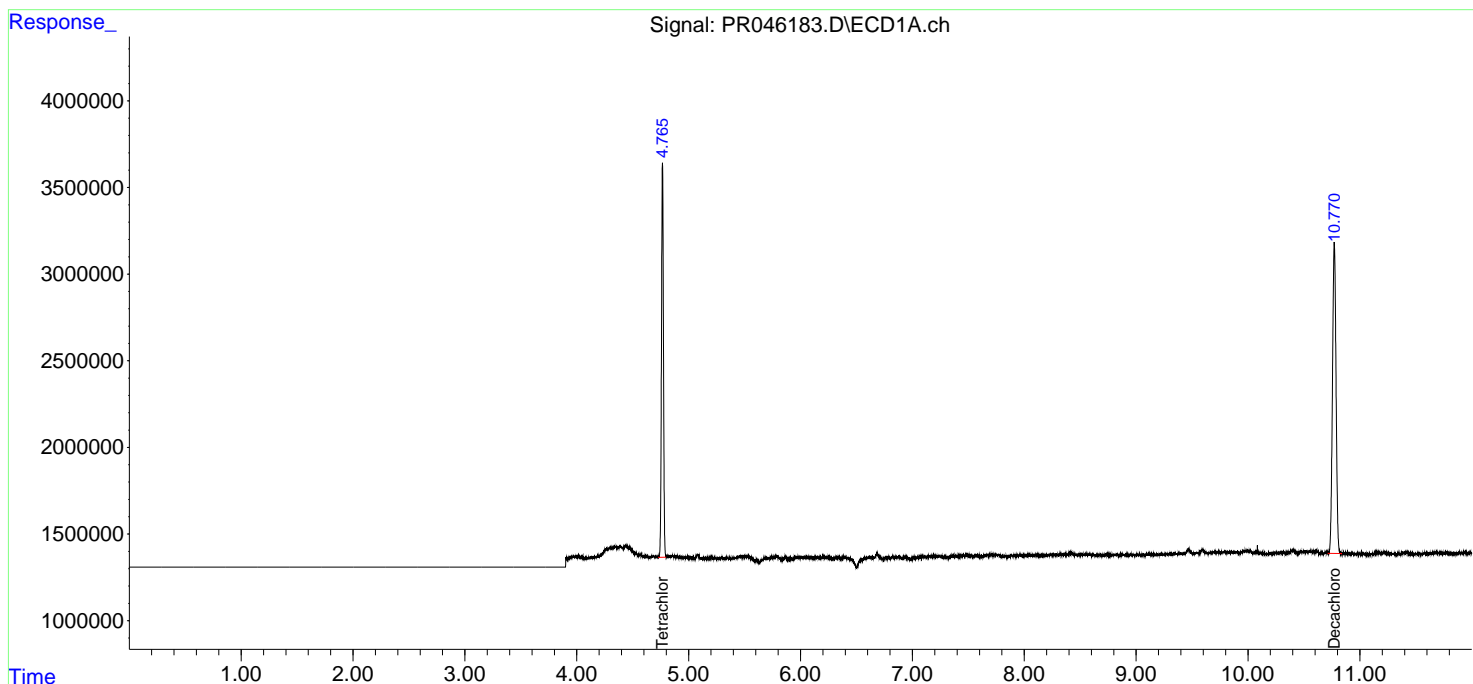
(f)=RT Delta > 1/2 Window (#)=Amounts differ by > 25% (m)=manual int.

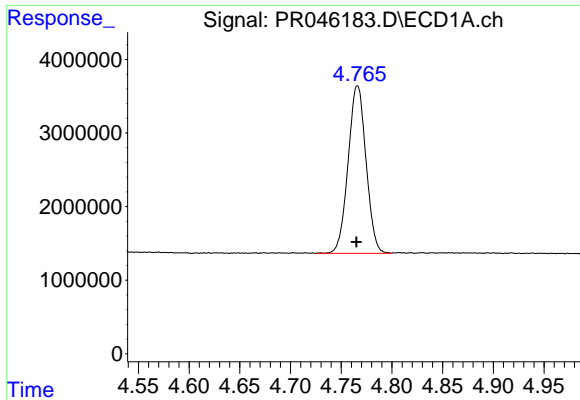
Data Path : Z:\pestpcbsrv\HPCHEM1\ECD_R\Data\PR071520\
 Data File : PR046183.D
 Signal(s) : Signal #1: ECD1A.ch Signal #2: ECD2B.ch
 Acq On : 15 Jul 2020 12:38
 Operator : AJ\MA
 Sample : I.BLK
 Misc :
 ALS Vial : 2 Sample Multiplier: 1

Instrument :
 ECD_R
 ClientSampled :
 I.BLK

Integration File signal 1: autoint1.e
 Integration File signal 2: autoint2.e
 Quant Time: Jul 16 04:10:46 2020
 Quant Method : Z:\pestpcbsrv\HPCHEM1\ECD_R\Method\PR071520.M
 Quant Title : GC EXTRACTABLES
 QLast Update : Thu Jul 16 04:01:55 2020
 Response via : Initial Calibration
 Integrator: ChemStation

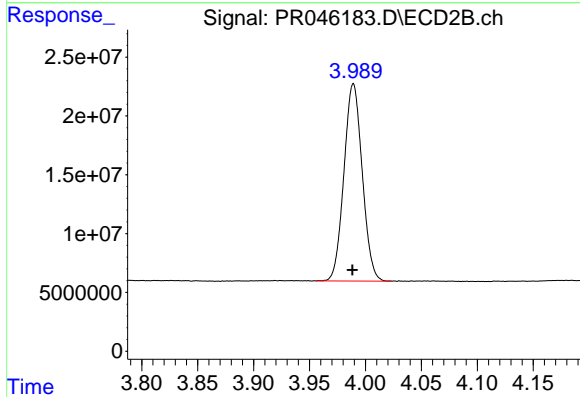
Volume Inj. : 2 µl
 Signal #1 Phase : ZB-MR1 Signal #2 Phase: ZB-MR2
 Signal #1 Info : 30Mx0.32mmx 0.50µ Signal #2 Info : 30M x 0.32mm x 0.25µm



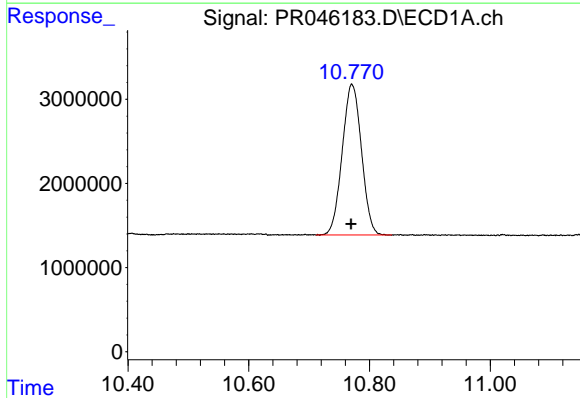


#1 Tetrachloro-m-xylene
 R.T.: 4.766 min
 Delta R.T.: 0.001 min
 Response: 27999069
 Conc: 15.22 ng/ml

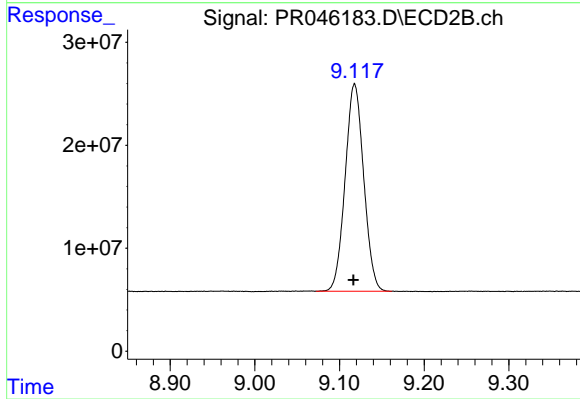
Instrument :
 ECD_R
 ClientSampleId :
 I.BLK



#1 Tetrachloro-m-xylene
 R.T.: 3.989 min
 Delta R.T.: 0.000 min
 Response: 190879068
 Conc: 15.51 ng/ml



#2 Decachlorobiphenyl
 R.T.: 10.771 min
 Delta R.T.: 0.002 min
 Response: 39596577
 Conc: 20.03 ng/ml



#2 Decachlorobiphenyl
 R.T.: 9.118 min
 Delta R.T.: 0.001 min
 Response: 306718977
 Conc: 19.81 ng/ml