

Data Path : Z:\pestpcbsrv\HPCHEM1\ECD_R\Data\PR071520\
 Data File : PR046191.D
 Signal(s) : Signal #1: ECD1A.ch Signal #2: ECD2B.ch
 Acq On : 15 Jul 2020 14:37
 Operator : AJ\MA
 Sample : AR1242ICC500
 Misc :
 ALS Vial : 10 Sample Multiplier: 1

Instrument :
 ECD_R
 ClientSampleId :
 AR1242ICC500

Integration File signal 1: autoint1.e
 Integration File signal 2: autoint2.e
 Quant Time: Jul 16 01:56:45 2020
 Quant Method : Z:\pestpcbsrv\HPCHEM1\ECD_R\Method\PR071520.M
 Quant Title : GC EXTRACTABLES
 QLast Update : Thu Jul 16 01:56:23 2020
 Response via : Initial Calibration
 Integrator: ChemStation

Volume Inj. : 2 µl
 Signal #1 Phase : ZB-MR1 Signal #2 Phase: ZB-MR2
 Signal #1 Info : 30Mx0.32mmx 0.50µ Signal #2 Info : 30M x 0.32mm x 0.25µm

Compound	RT#1	RT#2	Resp#1	Resp#2	ng/ml	ng/ml

System Monitoring Compounds						
1) SA Tetrachlo...	4.765	3.988	97576343	658.9E6	50.000	50.000
2) SA Decachlor...	10.770	9.116	97342725	773.6E6	50.000	50.000
Target Compounds						
16) L4 AR-1242-1	5.955	5.088	27029861	190.2E6	500.000	500.000
17) L4 AR-1242-2	5.979	5.108	37891349	261.9E6	500.000	500.000
18) L4 AR-1242-3	6.041	5.287	22869816	127.6E6	500.000	500.000
19) L4 AR-1242-4	6.144	5.370	19108834	130.1E6	500.000	500.000
20) L4 AR-1242-5	6.884	5.898	22123656	184.6E6	500.000	500.000

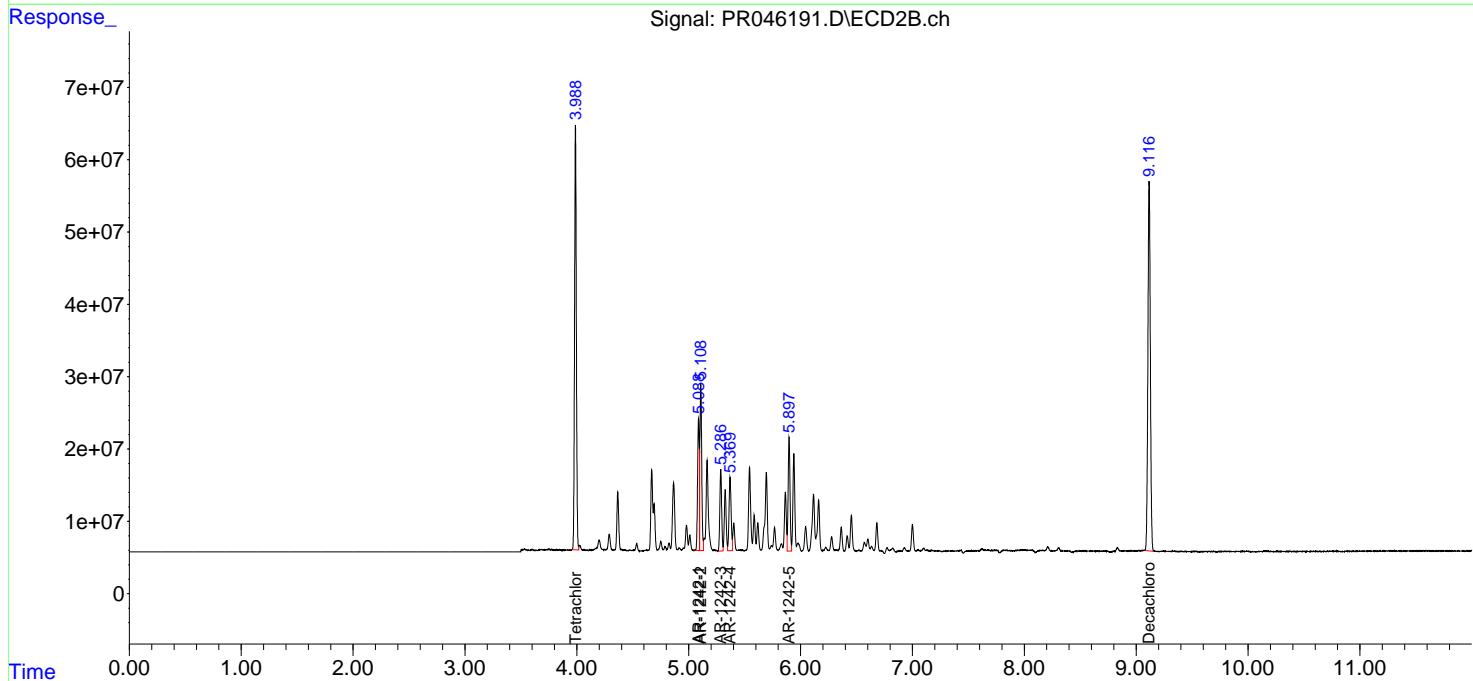
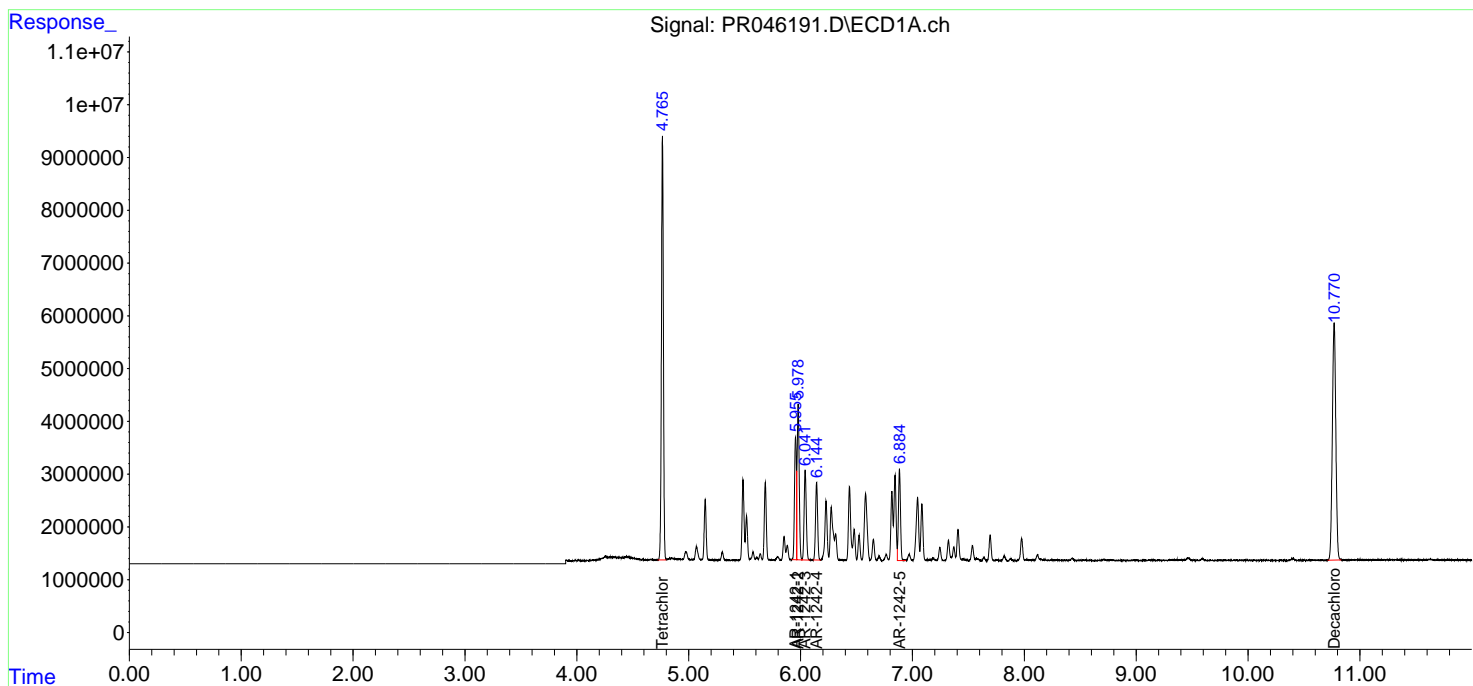
(f)=RT Delta > 1/2 Window (#)=Amounts differ by > 25% (m)=manual int.

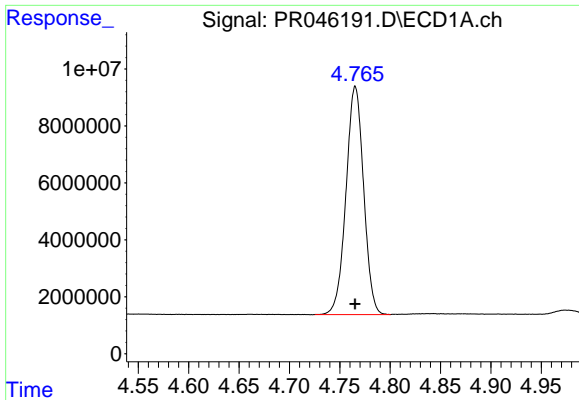
Data Path : Z:\pestpcbsrv\HPCHEM1\ECD_R\Data\PR071520\
 Data File : PR046191.D
 Signal(s) : Signal #1: ECD1A.ch Signal #2: ECD2B.ch
 Acq On : 15 Jul 2020 14:37
 Operator : AJ\MA
 Sample : AR1242ICC500
 Misc :
 ALS Vial : 10 Sample Multiplier: 1

Instrument :
 ECD_R
 ClientSampleID :
 AR1242ICC500

Integration File signal 1: autoint1.e
 Integration File signal 2: autoint2.e
 Quant Time: Jul 16 01:56:45 2020
 Quant Method : Z:\pestpcbsrv\HPCHEM1\ECD_R\Method\PR071520.M
 Quant Title : GC EXTRACTABLES
 QLast Update : Thu Jul 16 01:56:23 2020
 Response via : Initial Calibration
 Integrator: ChemStation

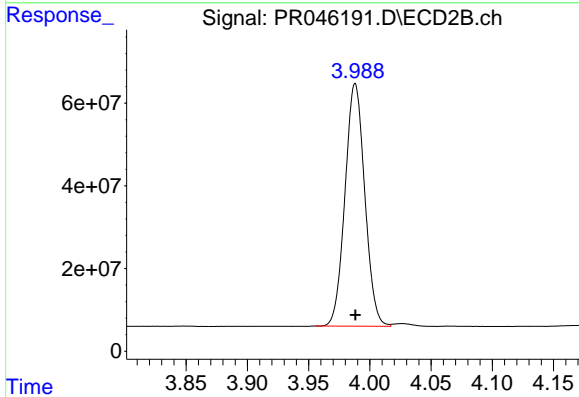
Volume Inj. : 2 µl
 Signal #1 Phase : ZB-MR1 Signal #2 Phase: ZB-MR2
 Signal #1 Info : 30Mx0.32mmx 0.50µm Signal #2 Info : 30M x 0.32mm x 0.25µm



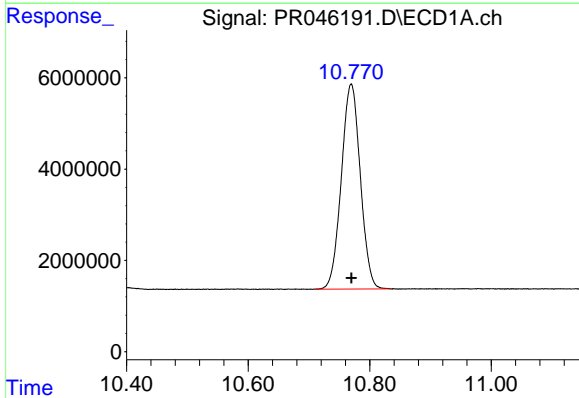


#1 Tetrachloro-m-xylene
 R.T.: 4.765 min
 Delta R.T.: 0.000 min
 Response: 97576343
 Conc: 50.00 ng/ml

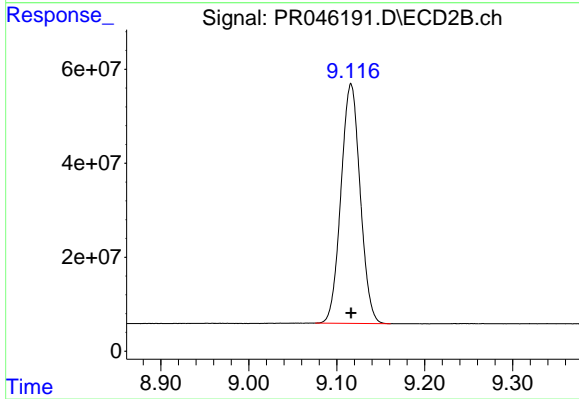
Instrument :
 ECD_R
 ClientSampleId :
 AR1242ICC500



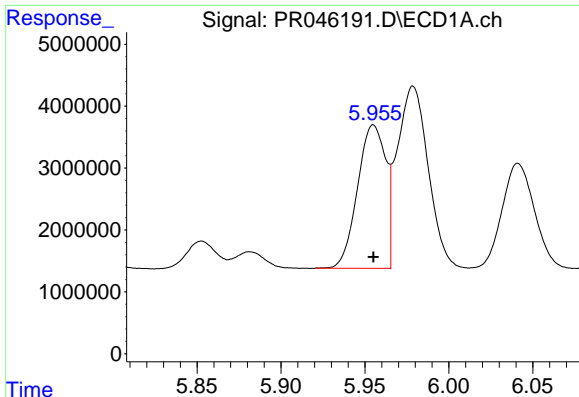
#1 Tetrachloro-m-xylene
 R.T.: 3.988 min
 Delta R.T.: 0.000 min
 Response: 658885359
 Conc: 50.00 ng/ml



#2 Decachlorobiphenyl
 R.T.: 10.770 min
 Delta R.T.: 0.000 min
 Response: 97342725
 Conc: 50.00 ng/ml



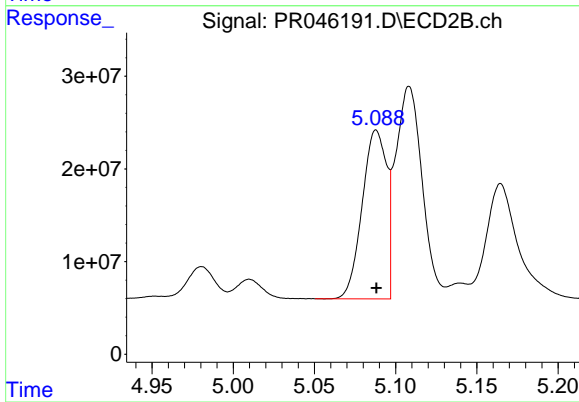
#2 Decachlorobiphenyl
 R.T.: 9.116 min
 Delta R.T.: 0.000 min
 Response: 773597451
 Conc: 50.00 ng/ml



#16 AR-1242-1

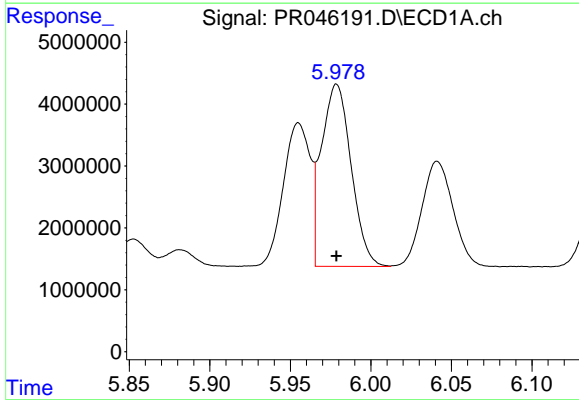
R.T.: 5.955 min
 Delta R.T.: 0.000 min
 Response: 27029861
 Conc: 500.00 ng/ml

Instrument :
 ECD_R
 ClientSampleId :
 AR1242ICC500



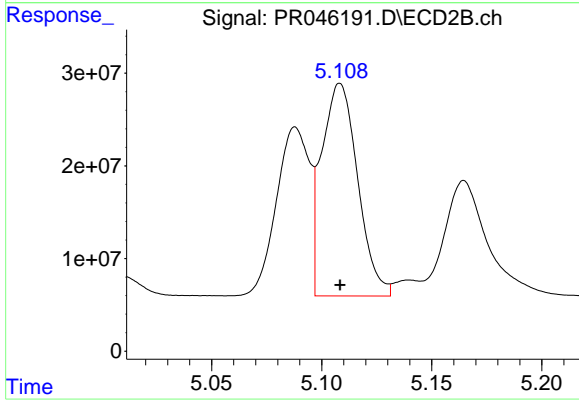
#16 AR-1242-1

R.T.: 5.088 min
 Delta R.T.: 0.000 min
 Response: 190180534
 Conc: 500.00 ng/ml



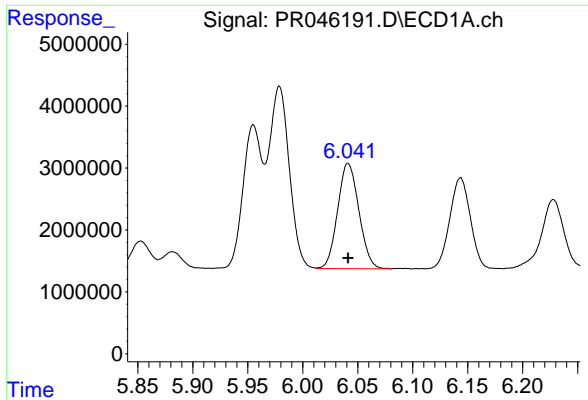
#17 AR-1242-2

R.T.: 5.979 min
 Delta R.T.: 0.000 min
 Response: 37891349
 Conc: 500.00 ng/ml



#17 AR-1242-2

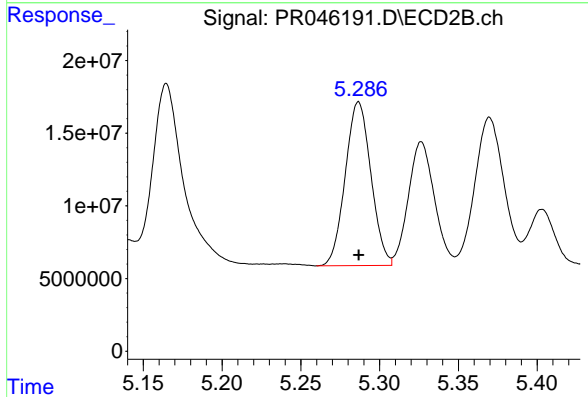
R.T.: 5.108 min
 Delta R.T.: 0.000 min
 Response: 261873036
 Conc: 500.00 ng/ml



#18 AR-1242-3

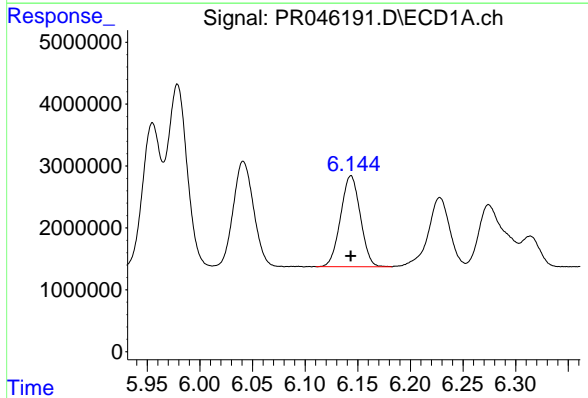
R.T.: 6.041 min
 Delta R.T.: 0.000 min
 Response: 22869816
 Conc: 500.00 ng/ml

Instrument :
 ECD_R
ClientSampled :
 AR1242ICC500



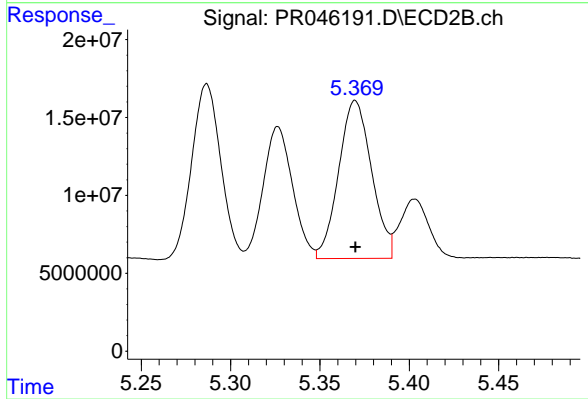
#18 AR-1242-3

R.T.: 5.287 min
 Delta R.T.: 0.000 min
 Response: 127594010
 Conc: 500.00 ng/ml



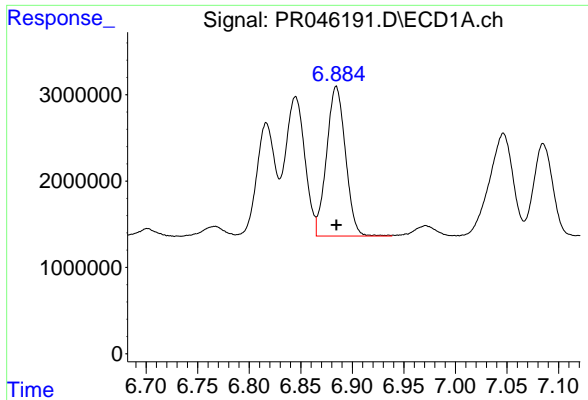
#19 AR-1242-4

R.T.: 6.144 min
 Delta R.T.: 0.000 min
 Response: 19108834
 Conc: 500.00 ng/ml



#19 AR-1242-4

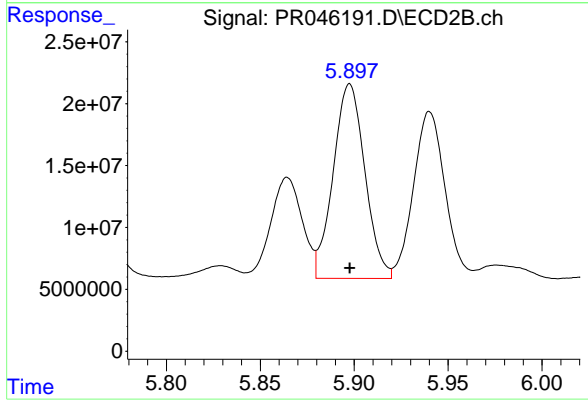
R.T.: 5.370 min
 Delta R.T.: 0.000 min
 Response: 130059275
 Conc: 500.00 ng/ml



#20 AR-1242-5

R.T.: 6.884 min
Delta R.T.: 0.000 min
Response: 22123656
Conc: 500.00 ng/ml

Instrument :
ECD_R
ClientSampleId :
AR1242ICC500



#20 AR-1242-5

R.T.: 5.898 min
Delta R.T.: 0.000 min
Response: 184578211
Conc: 500.00 ng/ml