

Data Path : Z:\pestpcbsrv\HPCHEM1\ECD_R\Data\PR071520\
 Data File : PR046199.D
 Signal(s) : Signal #1: ECD1A.ch Signal #2: ECD2B.ch
 Acq On : 15 Jul 2020 16:32
 Operator : AJ\MA
 Sample : PB130024BL
 Misc :
 ALS Vial : 4 Sample Multiplier: 1

Instrument :
 ECD_R
 ClientSampleId :
 PB130024BL

Integration File signal 1: autoint1.e
 Integration File signal 2: autoint2.e
 Quant Time: Jul 16 04:13:39 2020
 Quant Method : Z:\pestpcbsrv\HPCHEM1\ECD_R\Method\PR071520.M
 Quant Title : GC EXTRACTABLES
 QLast Update : Thu Jul 16 04:01:55 2020
 Response via : Initial Calibration
 Integrator: ChemStation

Volume Inj. : 2 µl
 Signal #1 Phase : ZB-MR1 Signal #2 Phase: ZB-MR2
 Signal #1 Info : 30Mx0.32mmx 0.50µ Signal #2 Info : 30M x 0.32mm x 0.25µm

Compound	RT#1	RT#2	Resp#1	Resp#2	ng/ml	ng/ml

System Monitoring Compounds						
1) SA Tetrachlo...	4.766	3.988	33351051	233.8E6	18.131	18.997
2) SA Decachlor...	10.770	9.116	40679330	334.0E6	20.580	21.572

Target Compounds

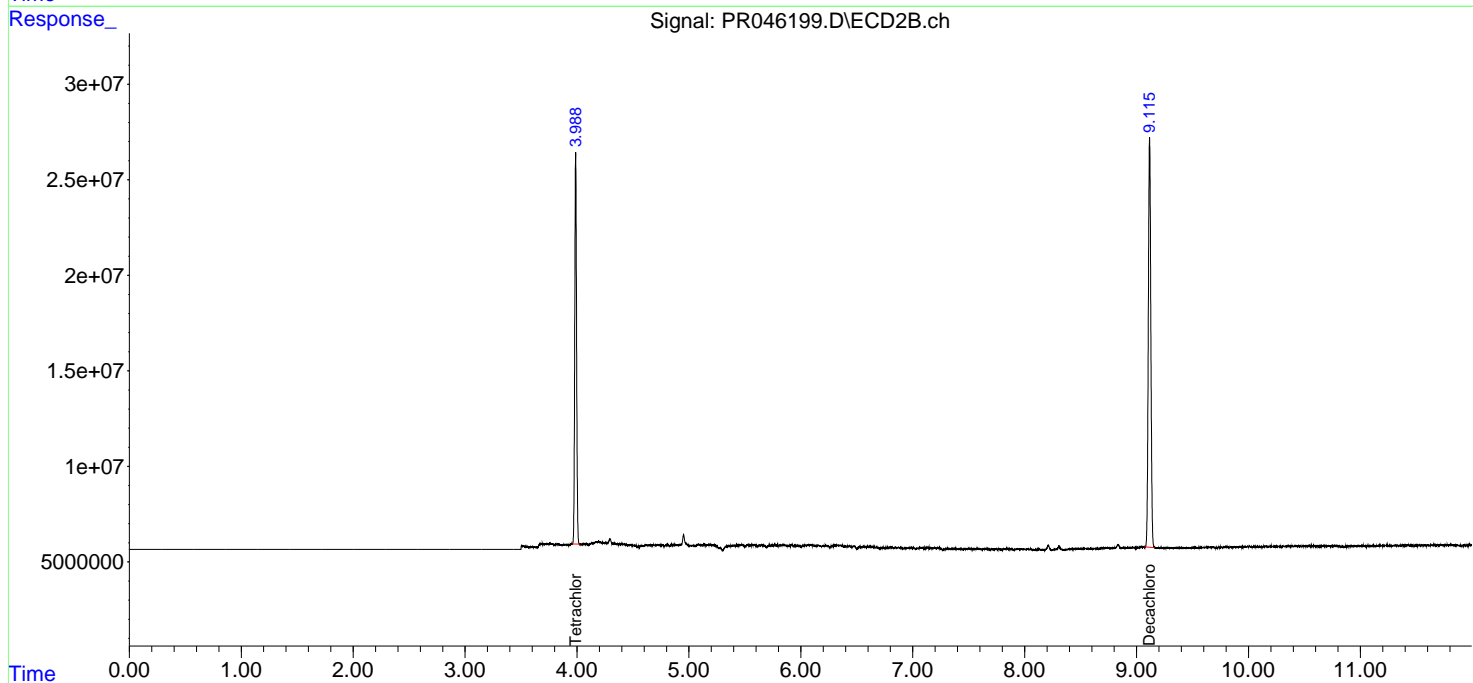
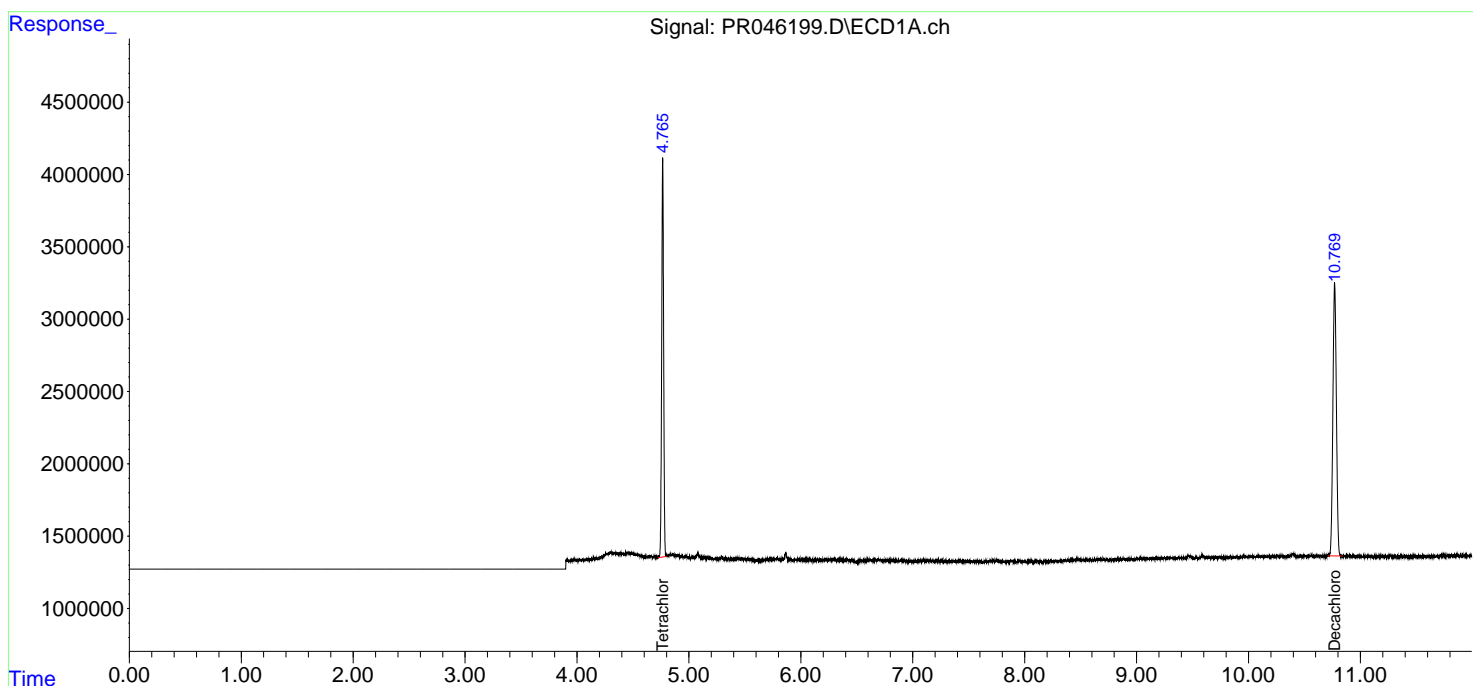
(f)=RT Delta > 1/2 Window (#)=Amounts differ by > 25% (m)=manual int.

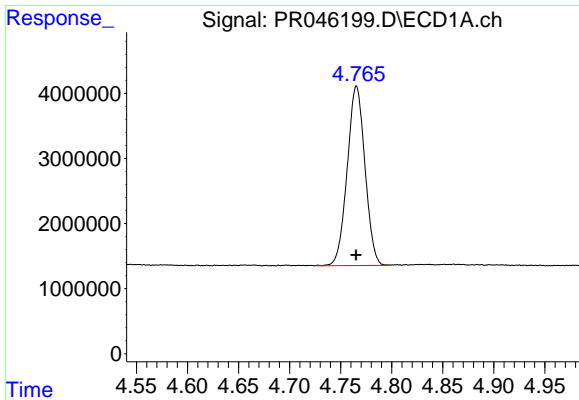
Data Path : Z:\pestpcbsrv\HPCHEM1\ECD_R\Data\PR071520\
 Data File : PR046199.D
 Signal(s) : Signal #1: ECD1A.ch Signal #2: ECD2B.ch
 Acq On : 15 Jul 2020 16:32
 Operator : AJ\MA
 Sample : PB130024BL
 Misc :
 ALS Vial : 4 Sample Multiplier: 1

Instrument :
 ECD_R
 ClientSampleId :
 PB130024BL

Integration File signal 1: autoint1.e
 Integration File signal 2: autoint2.e
 Quant Time: Jul 16 04:13:39 2020
 Quant Method : Z:\pestpcbsrv\HPCHEM1\ECD_R\Method\PR071520.M
 Quant Title : GC EXTRACTABLES
 QLast Update : Thu Jul 16 04:01:55 2020
 Response via : Initial Calibration
 Integrator: ChemStation

Volume Inj. : 2 µl
 Signal #1 Phase : ZB-MR1 Signal #2 Phase: ZB-MR2
 Signal #1 Info : 30Mx0.32mmx 0.50µ Signal #2 Info : 30M x 0.32mm x 0.25µm

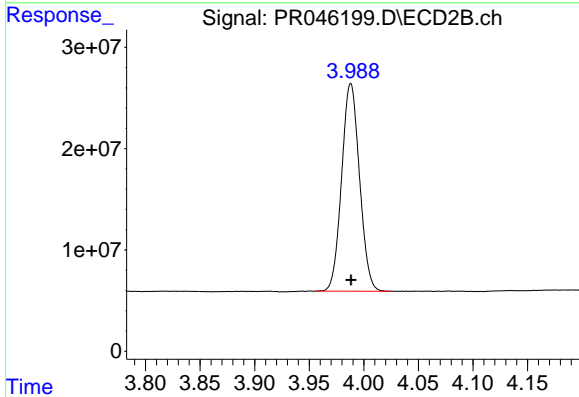




#1 Tetrachloro-m-xylene

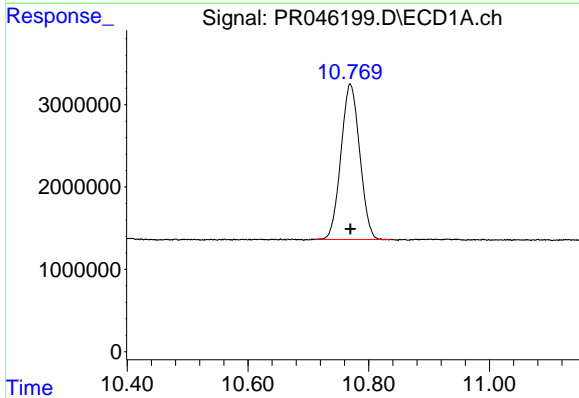
R.T.: 4.766 min
Delta R.T.: 0.000 min
Response: 33351051
Conc: 18.13 ng/ml

Instrument :
ECD_R
ClientSampleId :
PB130024BL



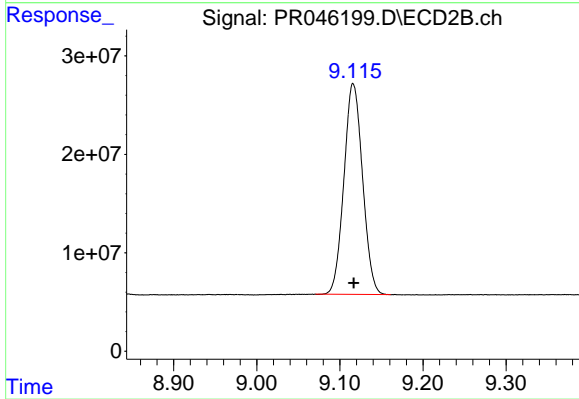
#1 Tetrachloro-m-xylene

R.T.: 3.988 min
Delta R.T.: 0.000 min
Response: 233782199
Conc: 19.00 ng/ml



#2 Decachlorobiphenyl

R.T.: 10.770 min
Delta R.T.: 0.000 min
Response: 40679330
Conc: 20.58 ng/ml



#2 Decachlorobiphenyl

R.T.: 9.116 min
Delta R.T.: 0.000 min
Response: 334008448
Conc: 21.57 ng/ml