

Data Path : Z:\pestpcbsrv\HPCHEM1\ECD_R\Data\PR071520\
 Data File : PR046228.D
 Signal(s) : Signal #1: ECD1A.ch Signal #2: ECD2B.ch
 Acq On : 15 Jul 2020 23:46
 Operator : AJ\MA
 Sample : L3216-02
 Misc : AR1268 LOQ 50 PPB
 ALS Vial : 29 Sample Multiplier: 1

Instrument :
 ECD_R
ClientSampleId :
 LOQ-SOIL-02-QT3-2020

Integration File signal 1: autoint1.e
 Integration File signal 2: autoint2.e
 Quant Time: Jul 16 04:32:05 2020
 Quant Method : Z:\pestpcbsrv\HPCHEM1\ECD_R\Method\PR071520.M
 Quant Title : GC EXTRACTABLES
 QLast Update : Thu Jul 16 04:01:55 2020
 Response via : Initial Calibration
 Integrator: ChemStation

Volume Inj. : 2 µl
 Signal #1 Phase : ZB-MR1 Signal #2 Phase: ZB-MR2
 Signal #1 Info : 30Mx0.32mmx 0.50µ Signal #2 Info : 30M x 0.32mm x 0.25µm

Compound	RT#1	RT#2	Resp#1	Resp#2	ng/ml	ng/ml

System Monitoring Compounds						
1) SA Tetrachlo...	4.766	3.989	34818705	254.9E6	18.928	20.713
2) SA Decachlor...	10.766	9.113	51554258	442.2E6	26.082	28.558
Target Compounds						
41) L9 AR-1268-1	9.111	7.928	16759269	157.7E6	55.986	62.837
42) L9 AR-1268-2	9.217	7.992	15040342	173.2E6	54.122	72.185 #
43) L9 AR-1268-3	9.463	8.208	12792761	115.1E6	55.731	57.317
44) L9 AR-1268-4	9.942	8.510	5920299	51082868	57.204	58.621
45) L9 AR-1268-5	10.394	8.830	41000448	358.7E6	52.451	56.651

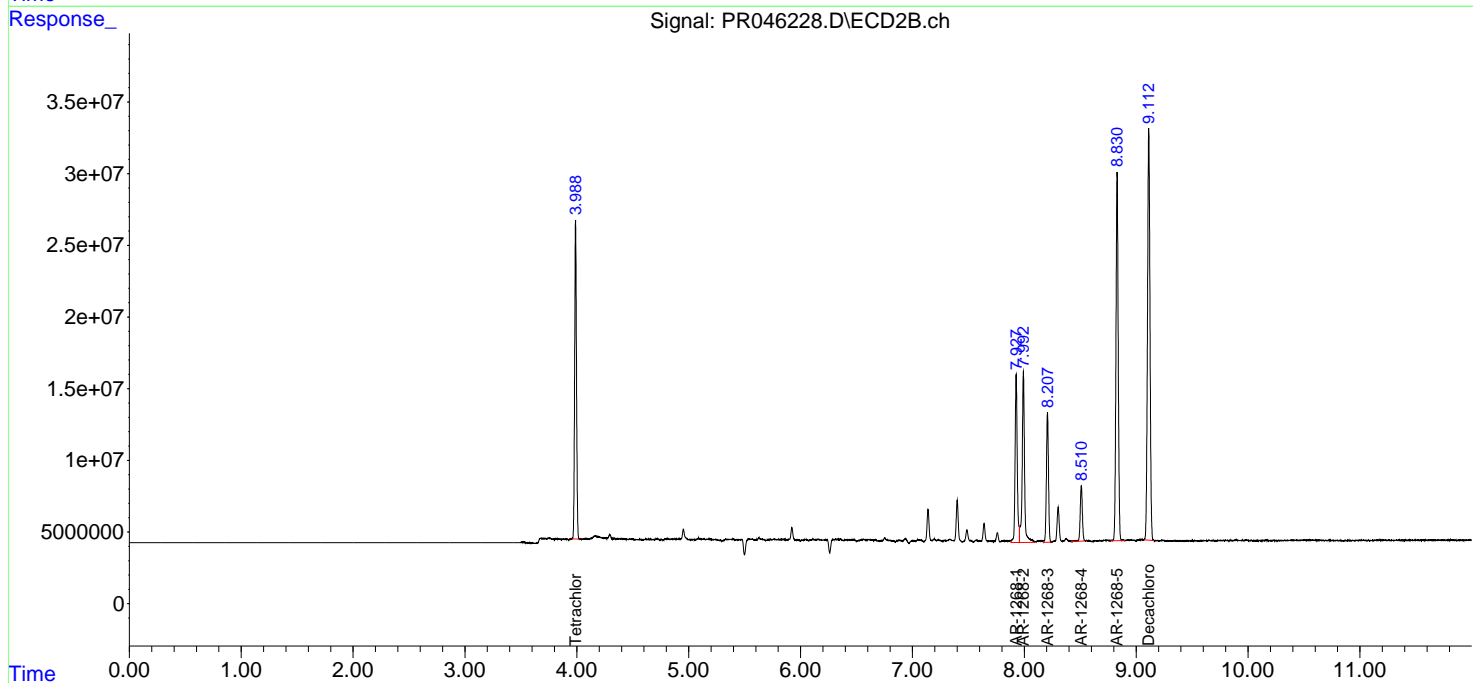
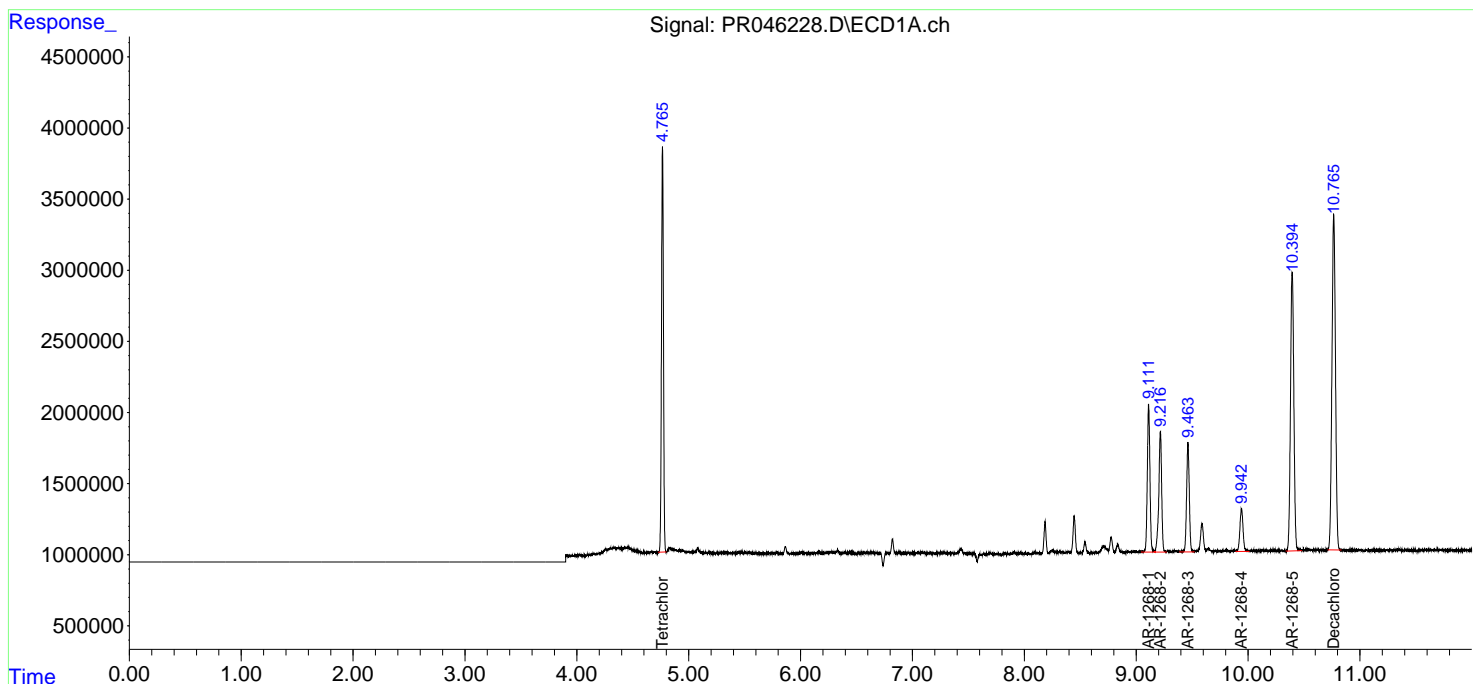
(f)=RT Delta > 1/2 Window (#)=Amounts differ by > 25% (m)=manual int.

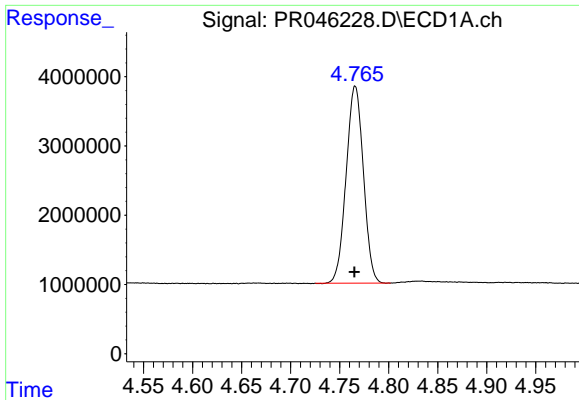
Data Path : Z:\pestpcbsrv\HPCHEM1\ECD_R\Data\PR071520\
 Data File : PR046228.D
 Signal(s) : Signal #1: ECD1A.ch Signal #2: ECD2B.ch
 Acq On : 15 Jul 2020 23:46
 Operator : AJ\MA
 Sample : L3216-02
 Misc : AR1268 LOQ 50 PPB
 ALS Vial : 29 Sample Multiplier: 1

Instrument :
 ECD_R
Client Sampled :
 LOQ-SOIL-02-QT3-2020

Integration File signal 1: autoint1.e
 Integration File signal 2: autoint2.e
 Quant Time: Jul 16 04:32:05 2020
 Quant Method : Z:\pestpcbsrv\HPCHEM1\ECD_R\Method\PR071520.M
 Quant Title : GC EXTRACTABLES
 QLast Update : Thu Jul 16 04:01:55 2020
 Response via : Initial Calibration
 Integrator: ChemStation

Volume Inj. : 2 µl
 Signal #1 Phase : ZB-MR1 Signal #2 Phase: ZB-MR2
 Signal #1 Info : 30Mx0.32mmx 0.50µ Signal #2 Info : 30M x 0.32mm x 0.25µm

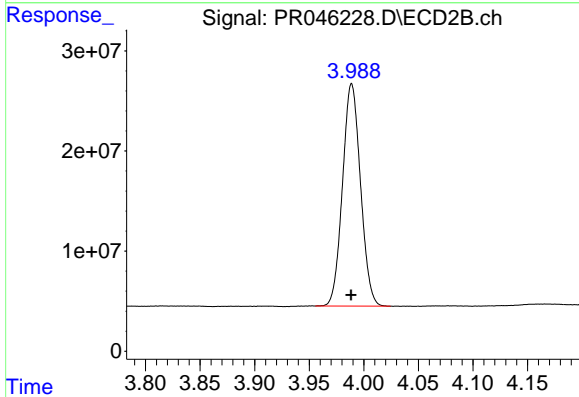




#1 Tetrachloro-m-xylene

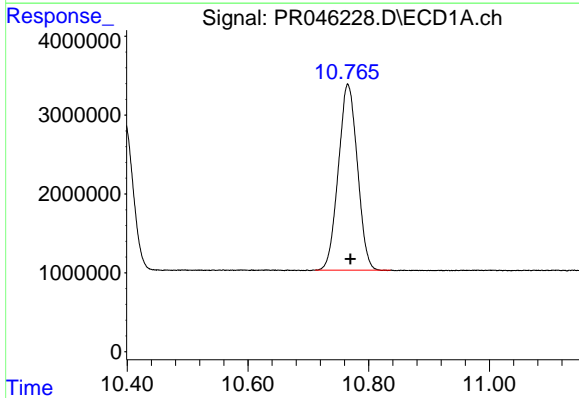
R.T.: 4.766 min
 Delta R.T.: 0.000 min
 Response: 34818705
 Conc: 18.93 ng/ml

Instrument :
 ECD_R
 ClientSampleId :
 LOQ-SOIL-02-QT3-2020



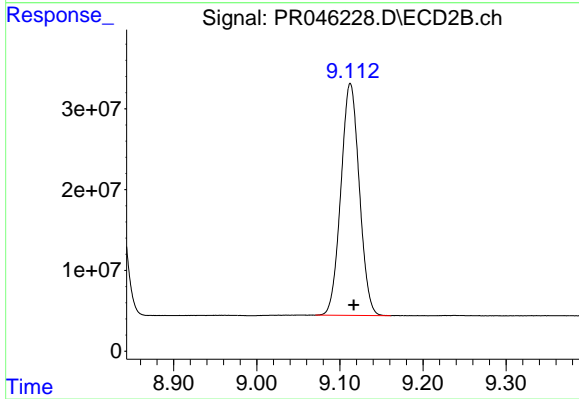
#1 Tetrachloro-m-xylene

R.T.: 3.989 min
 Delta R.T.: 0.000 min
 Response: 254898218
 Conc: 20.71 ng/ml



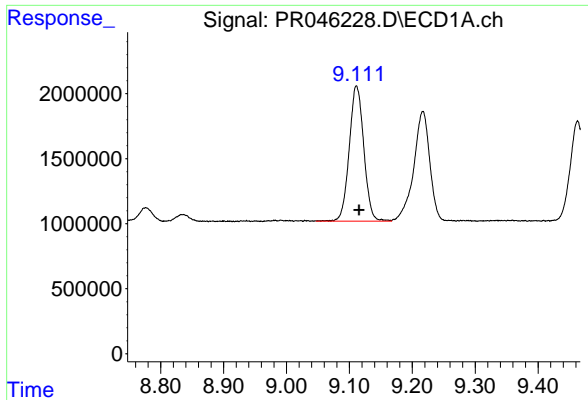
#2 Decachlorobiphenyl

R.T.: 10.766 min
 Delta R.T.: -0.004 min
 Response: 51554258
 Conc: 26.08 ng/ml



#2 Decachlorobiphenyl

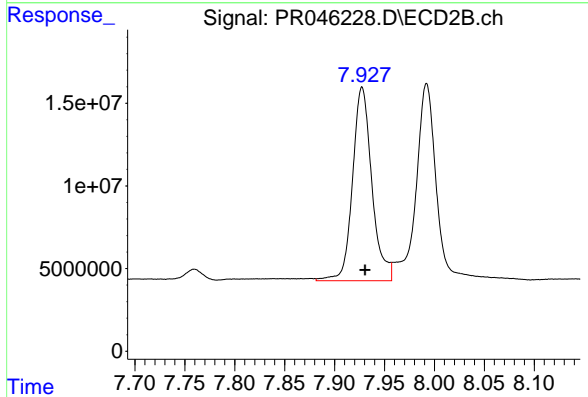
R.T.: 9.113 min
 Delta R.T.: -0.004 min
 Response: 442184838
 Conc: 28.56 ng/ml



#41 AR-1268-1

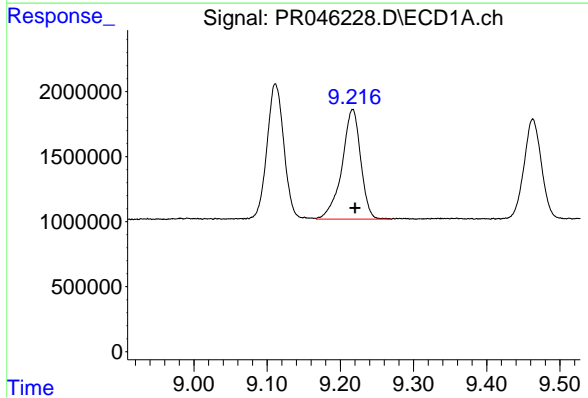
R.T.: 9.111 min
 Delta R.T.: -0.004 min
 Response: 16759269
 Conc: 55.99 ng/ml

Instrument :
 ECD_R
 ClientSampleId :
 LOQ-SOIL-02-QT3-2020



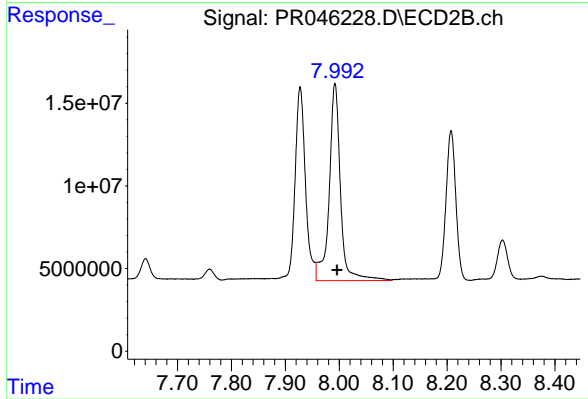
#41 AR-1268-1

R.T.: 7.928 min
 Delta R.T.: -0.003 min
 Response: 157699779
 Conc: 62.84 ng/ml



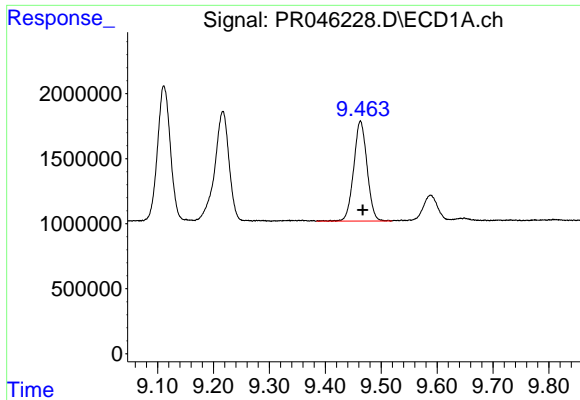
#42 AR-1268-2

R.T.: 9.217 min
 Delta R.T.: -0.003 min
 Response: 15040342
 Conc: 54.12 ng/ml



#42 AR-1268-2

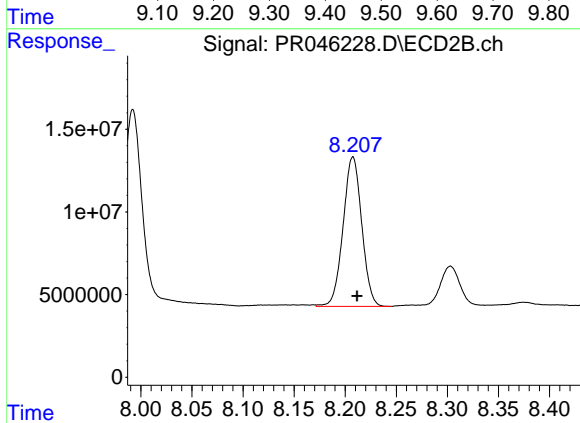
R.T.: 7.992 min
 Delta R.T.: -0.004 min
 Response: 173211391
 Conc: 72.18 ng/ml



#43 AR-1268-3

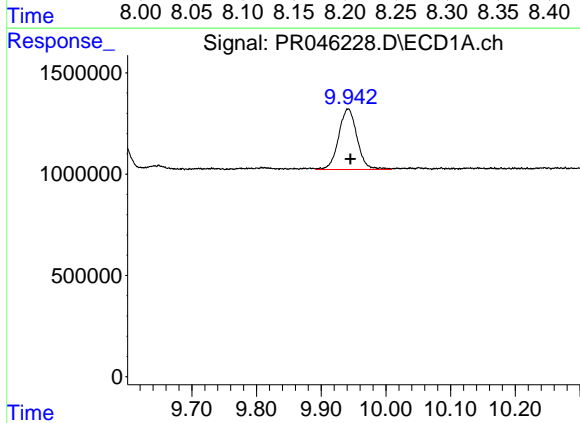
R.T.: 9.463 min
 Delta R.T.: -0.004 min
 Response: 12792761
 Conc: 55.73 ng/ml

Instrument :
 ECD_R
ClientSampleId :
 LOQ-SOIL-02-QT3-2020



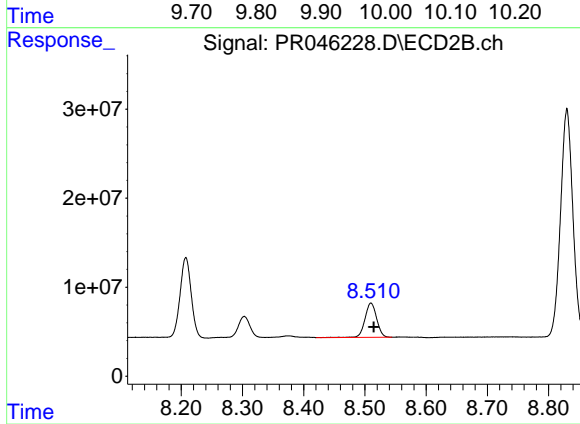
#43 AR-1268-3

R.T.: 8.208 min
 Delta R.T.: -0.004 min
 Response: 115100466
 Conc: 57.32 ng/ml



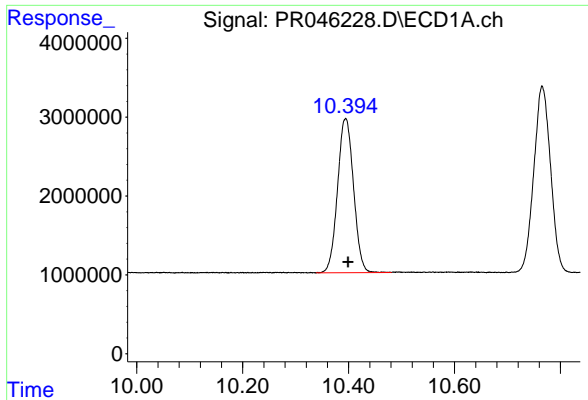
#44 AR-1268-4

R.T.: 9.942 min
 Delta R.T.: -0.004 min
 Response: 5920299
 Conc: 57.20 ng/ml



#44 AR-1268-4

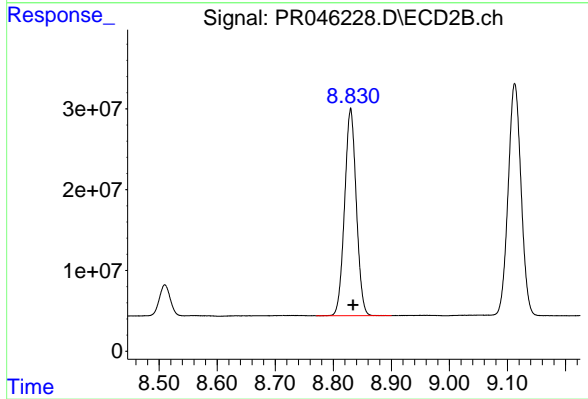
R.T.: 8.510 min
 Delta R.T.: -0.005 min
 Response: 51082868
 Conc: 58.62 ng/ml



#45 AR-1268-5

R.T.: 10.394 min
Delta R.T.: -0.005 min
Response: 41000448
Conc: 52.45 ng/ml

Instrument :
ECD_R
ClientSampleId :
LOQ-SOIL-02-QT3-2020



#45 AR-1268-5

R.T.: 8.830 min
Delta R.T.: -0.004 min
Response: 358676969
Conc: 56.65 ng/ml