

Data Path : Z:\pestpcbsrv\HPCHEM1\ECD_R\Data\PR071520\
 Data File : PR046236.D
 Signal(s) : Signal #1: ECD1A.ch Signal #2: ECD2B.ch
 Acq On : 16 Jul 2020 01:56
 Operator : AJ\MA
 Sample : L3216-08
 Misc : AR1248 LOQ 50 PPB
 ALS Vial : 34 Sample Multiplier: 1

Instrument :
 ECD_R
 ClientSampleId :
 LOQ-WATER-02-QT3-2020

Integration File signal 1: autoint1.e
 Integration File signal 2: autoint2.e
 Quant Time: Jul 16 04:36:39 2020
 Quant Method : Z:\pestpcbsrv\HPCHEM1\ECD_R\Method\PR071520.M
 Quant Title : GC EXTRACTABLES
 QLast Update : Thu Jul 16 04:01:55 2020
 Response via : Initial Calibration
 Integrator: ChemStation

Volume Inj. : 2 µl
 Signal #1 Phase : ZB-MR2 Signal #2 Phase: ZB-MR2
 Signal #1 Info : 30Mx0.32mmx 0.50µ Signal #2 Info : 30M x 0.32mm x 0.25µm

Compound	RT#1	RT#2	Resp#1	Resp#2	ng/ml	ng/ml

System Monitoring Compounds						
1) SA Tetrachlo...	4.765	3.989	42810795	310.7E6	23.273	25.245
2) SA Decachlor...	10.765	9.111	49843817	429.0E6	25.216	27.709
Target Compounds						
21) L5 AR-1248-1	5.954	5.088	2200502	18086102	54.620	62.718
22) L5 AR-1248-2	6.227	5.327	3276174	23593729	60.056	66.862
23) L5 AR-1248-3	6.436	5.370	3655158	24243262	58.891	64.779
24) L5 AR-1248-4	6.844	5.544	4228338	29733326	57.394	63.337
25) L5 AR-1248-5	6.883	5.940	4137512	29808883	58.912	61.573

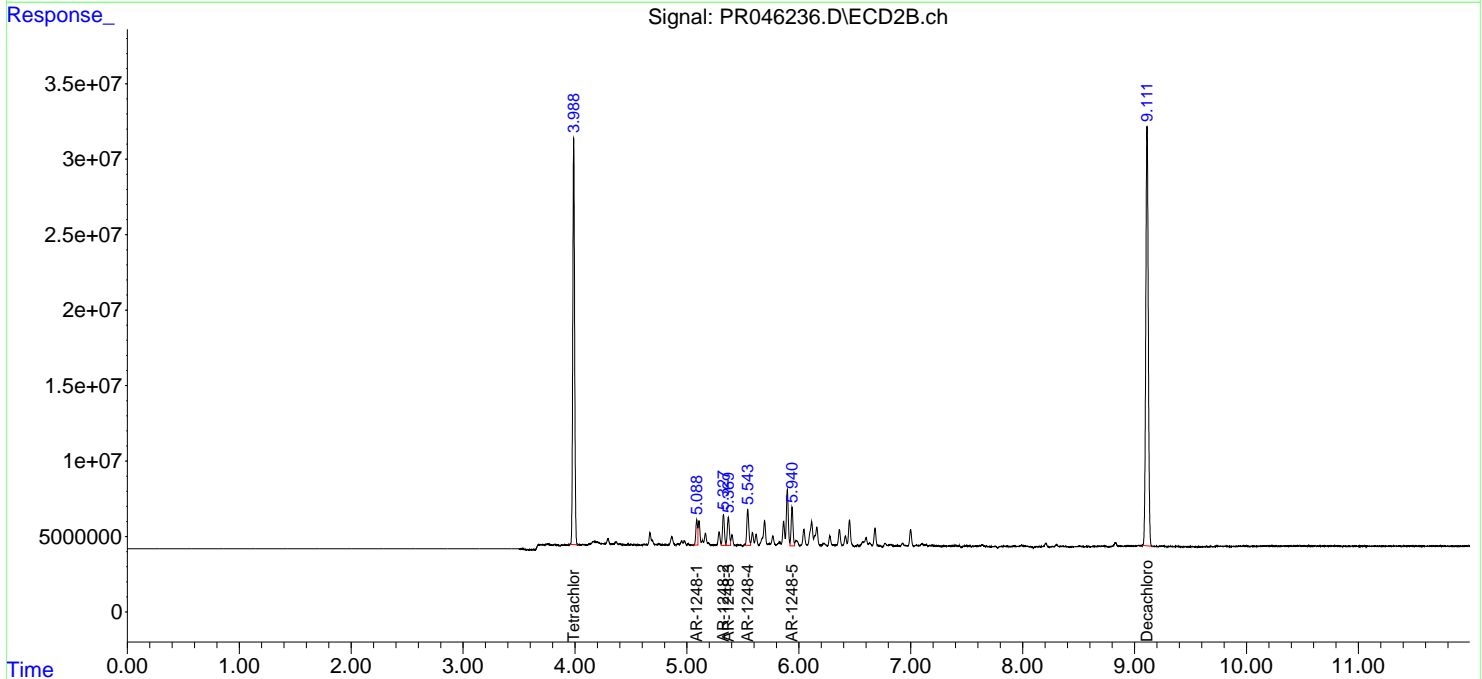
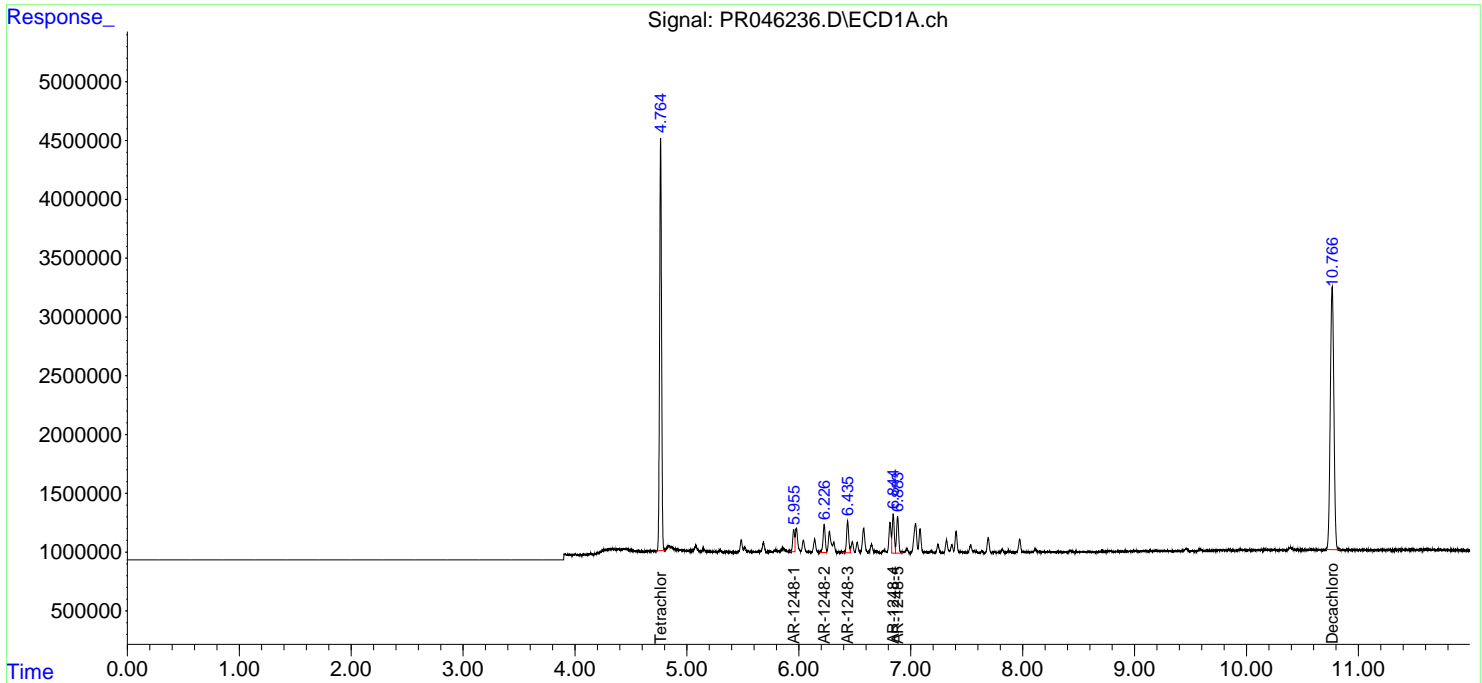
(f)=RT Delta > 1/2 Window (#)=Amounts differ by > 25% (m)=manual int.

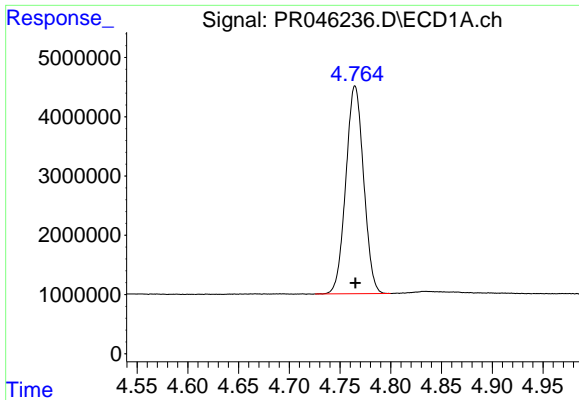
Data Path : Z:\pestpcbsrv\HPCHEM1\ECD_R\Data\PR071520\
 Data File : PR046236.D
 Signal(s) : Signal #1: ECD1A.ch Signal #2: ECD2B.ch
 Acq On : 16 Jul 2020 01:56
 Operator : AJ\MA
 Sample : L3216-08
 Misc : AR1248 LOQ 50 PPB
 ALS Vial : 34 Sample Multiplier: 1

Instrument :
 ECD_R
Client Sampled :
 LOQ-WATER-02-QT3-2020

Integration File signal 1: autoint1.e
 Integration File signal 2: autoint2.e
 Quant Time: Jul 16 04:36:39 2020
 Quant Method : Z:\pestpcbsrv\HPCHEM1\ECD_R\Method\PR071520.M
 Quant Title : GC EXTRACTABLES
 QLast Update : Thu Jul 16 04:01:55 2020
 Response via : Initial Calibration
 Integrator: ChemStation

Volume Inj. : 2 µl
 Signal #1 Phase : ZB-MR1 Signal #2 Phase: ZB-MR2
 Signal #1 Info : 30Mx0.32mmx 0.50µ Signal #2 Info : 30M x 0.32mm x 0.25µm

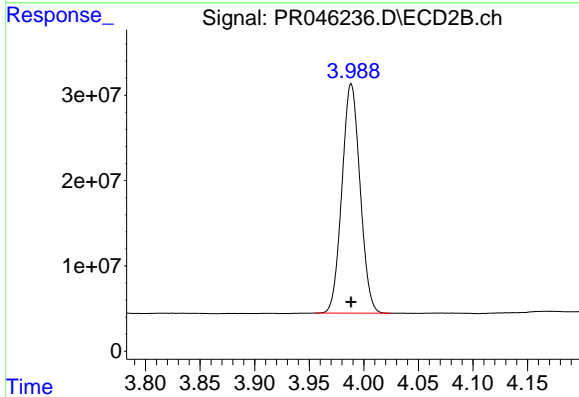




#1 Tetrachloro-m-xylene

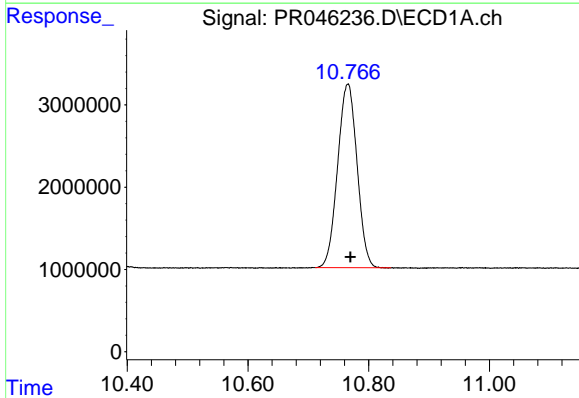
R.T.: 4.765 min
 Delta R.T.: 0.000 min
 Response: 42810795
 Conc: 23.27 ng/ml

Instrument :
 ECD_R
 ClientSampleId :
 LOQ-WATER-02-QT3-2020



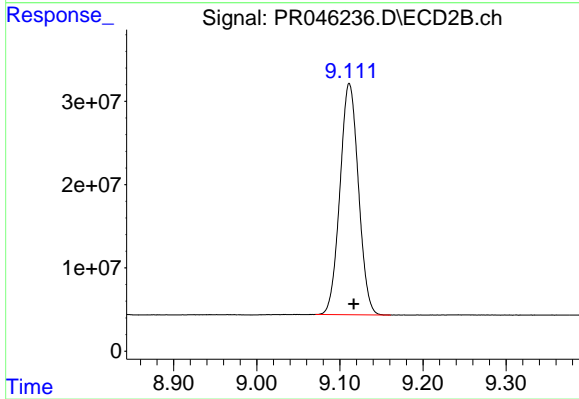
#1 Tetrachloro-m-xylene

R.T.: 3.989 min
 Delta R.T.: 0.000 min
 Response: 310663664
 Conc: 25.24 ng/ml



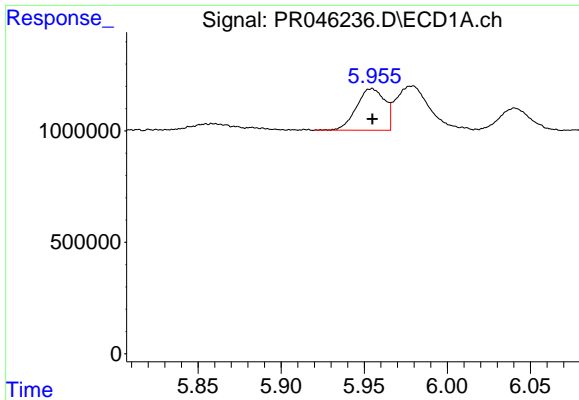
#2 Decachlorobiphenyl

R.T.: 10.765 min
 Delta R.T.: -0.004 min
 Response: 49843817
 Conc: 25.22 ng/ml



#2 Decachlorobiphenyl

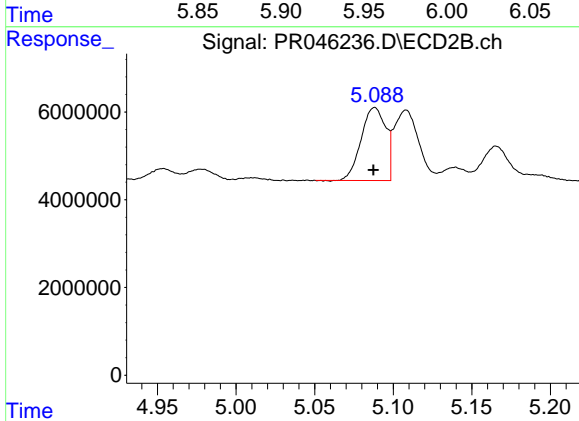
R.T.: 9.111 min
 Delta R.T.: -0.005 min
 Response: 429045228
 Conc: 27.71 ng/ml



#21 AR-1248-1

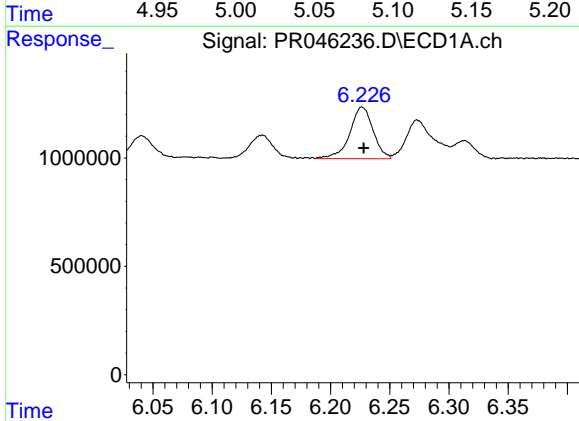
R.T.: 5.954 min
 Delta R.T.: 0.000 min
 Response: 2200502
 Conc: 54.62 ng/ml

Instrument :
 ECD_R
 ClientSampleId :
 LOQ-WATER-02-QT3-2020



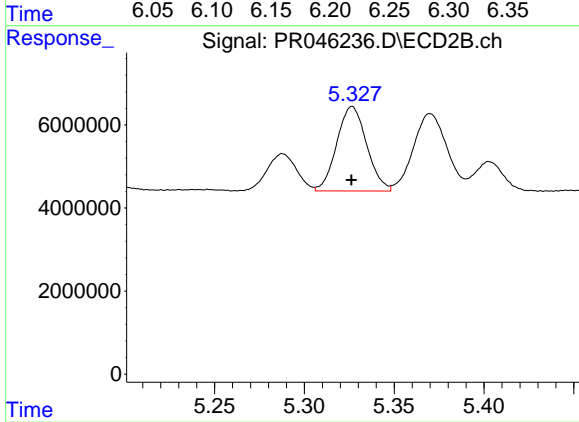
#21 AR-1248-1

R.T.: 5.088 min
 Delta R.T.: 0.000 min
 Response: 18086102
 Conc: 62.72 ng/ml



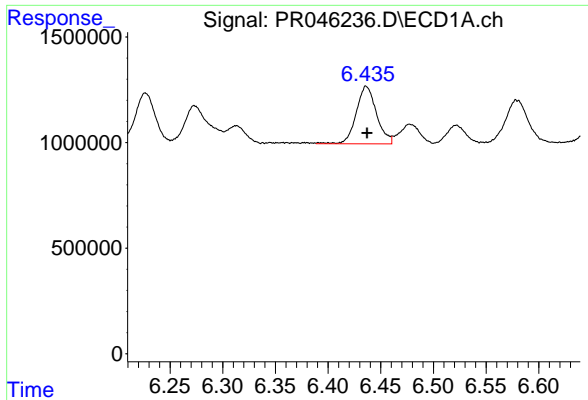
#22 AR-1248-2

R.T.: 6.227 min
 Delta R.T.: -0.001 min
 Response: 3276174
 Conc: 60.06 ng/ml



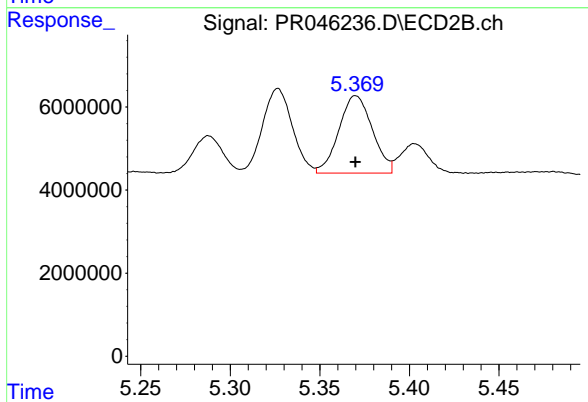
#22 AR-1248-2

R.T.: 5.327 min
 Delta R.T.: 0.000 min
 Response: 23593729
 Conc: 66.86 ng/ml

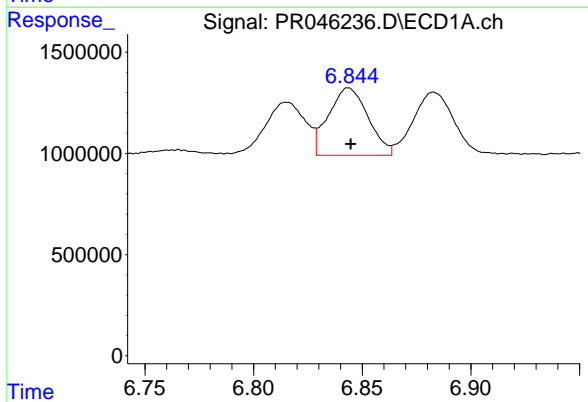


#23 AR-1248-3
 R.T.: 6.436 min
 Delta R.T.: 0.000 min
 Response: 3655158
 Conc: 58.89 ng/ml

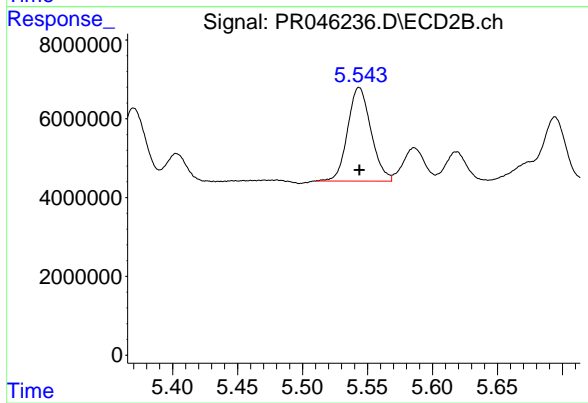
Instrument :
 ECD_R
ClientSampleId :
 LOQ-WATER-02-QT3-2020



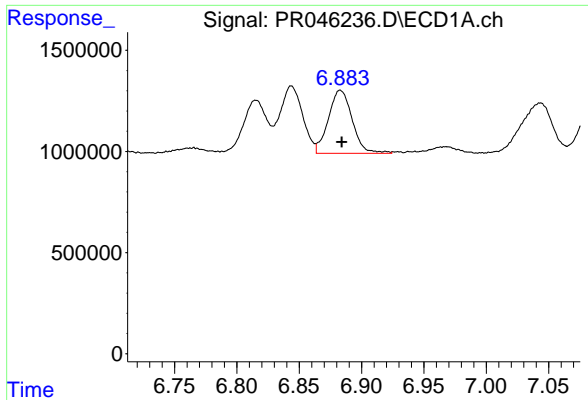
#23 AR-1248-3
 R.T.: 5.370 min
 Delta R.T.: 0.000 min
 Response: 24243262
 Conc: 64.78 ng/ml



#24 AR-1248-4
 R.T.: 6.844 min
 Delta R.T.: -0.001 min
 Response: 4228338
 Conc: 57.39 ng/ml



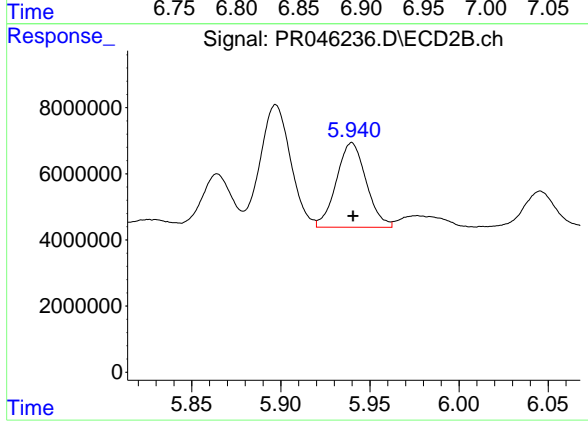
#24 AR-1248-4
 R.T.: 5.544 min
 Delta R.T.: 0.000 min
 Response: 29733326
 Conc: 63.34 ng/ml



#25 AR-1248-5

R.T.: 6.883 min
Delta R.T.: -0.001 min
Response: 4137512
Conc: 58.91 ng/ml

Instrument :
ECD_R
ClientSampleId :
LOQ-WATER-02-QT3-2020



#25 AR-1248-5

R.T.: 5.940 min
Delta R.T.: 0.000 min
Response: 29808883
Conc: 61.57 ng/ml