

Data Path : Z:\pestpcbsrv\HPCHEM1\ECD_R\Data\PR071524\
 Data File : PR067650.D
 Signal(s) : Signal #1: ECD1A.ch Signal #2: ECD2B.ch
 Acq On : 15 Jul 2024 17:05
 Operator : AJ\MA
 Sample : AR1660ICC100
 Misc :
 ALS Vial : 3 Sample Multiplier: 1

Instrument :
 ECD_R
 ClientSampleId :
 AR16601204

Integration File signal 1: autoint1.e
 Integration File signal 2: autoint2.e
 Quant Time: Jul 16 07:07:22 2024
 Quant Method : Z:\pestpcbsrv\HPCHEM1\ECD_R\Method\PR071524CLP.M
 Quant Title : GC EXTRACTABLES
 QLast Update : Tue Jul 16 07:06:55 2024
 Response via : Initial Calibration
 Integrator: ChemStation

Volume Inj. : 1 µl
 Signal #1 Phase : ZB MR1 Signal #2 Phase: ZB MR2
 Signal #1 Info : 30Mx0.32mmx 0.5µm Signal #2 Info : 30M x 0.32mm x 0.25µm

Compound	RT#1	RT#2	Resp#1	Resp#2	ng/ml	ng/ml

System Monitoring Compounds						
1) SA Tetrachlo...	3.604	2.874	10782723	26542109	4.927	5.232
2) SA Decachlor...	9.474	8.095	11712738	19845274	10.855	10.519
Target Compounds						
3) L1 AR-1016-1	4.822	3.980	5848733	16980567	104.999	109.021
4) L1 AR-1016-2	4.844	3.997	9826432	24078171	106.258	108.936
5) L1 AR-1016-3	4.907	4.174	6972664	12756541	122.323	107.985
6) L1 AR-1016-4	5.009	4.225	4931686	10427087	105.280	113.998
7) L1 AR-1016-5	5.324	4.439	4219174	13590674	101.370	111.176
31) L7 AR-1260-1	6.536	5.523	8427714	32568893	104.748	114.391
32) L7 AR-1260-2	6.818	5.727	10019199	40576701	108.829	115.813
33) L7 AR-1260-3	7.208	5.884	7312405	37705037	106.258	115.405
34) L7 AR-1260-4	7.451	6.388	8934008	27471605	109.001	107.640
35) L7 AR-1260-5	7.789	6.654	17570265	57793687	100.810	104.872

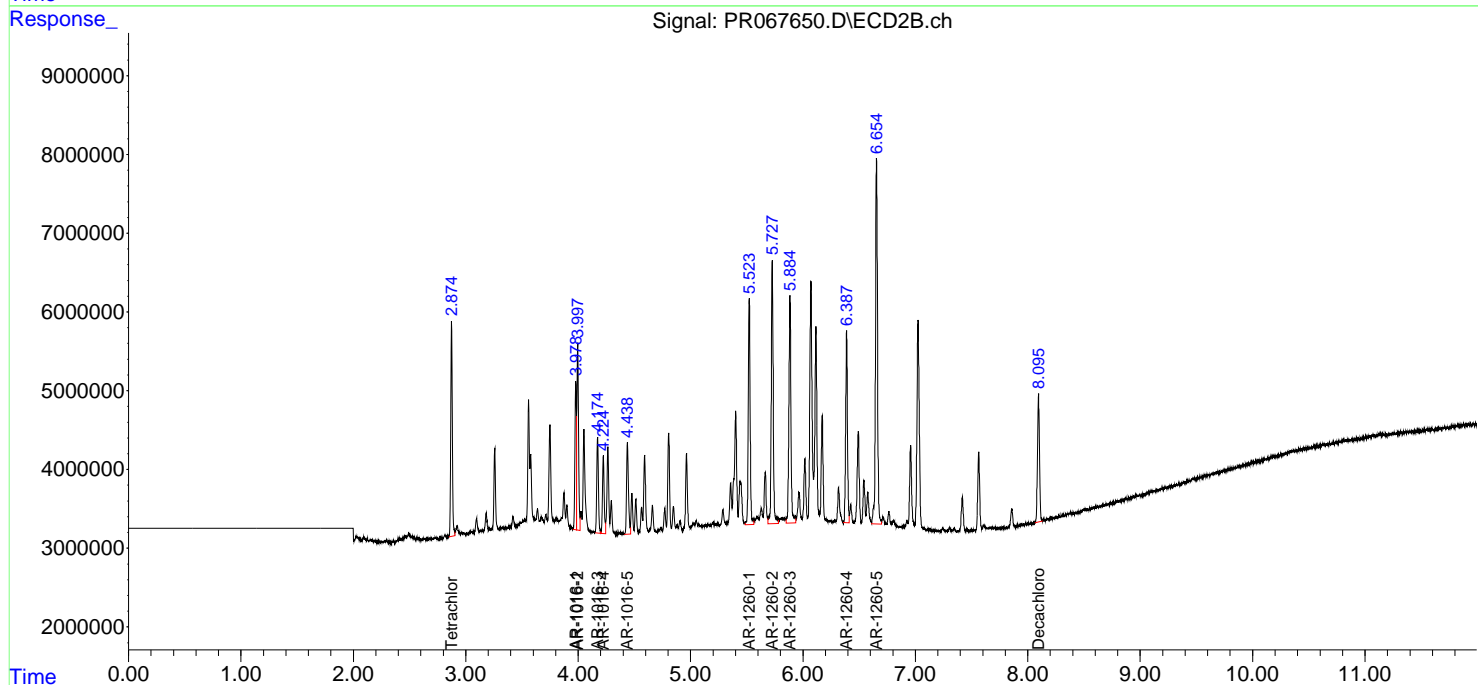
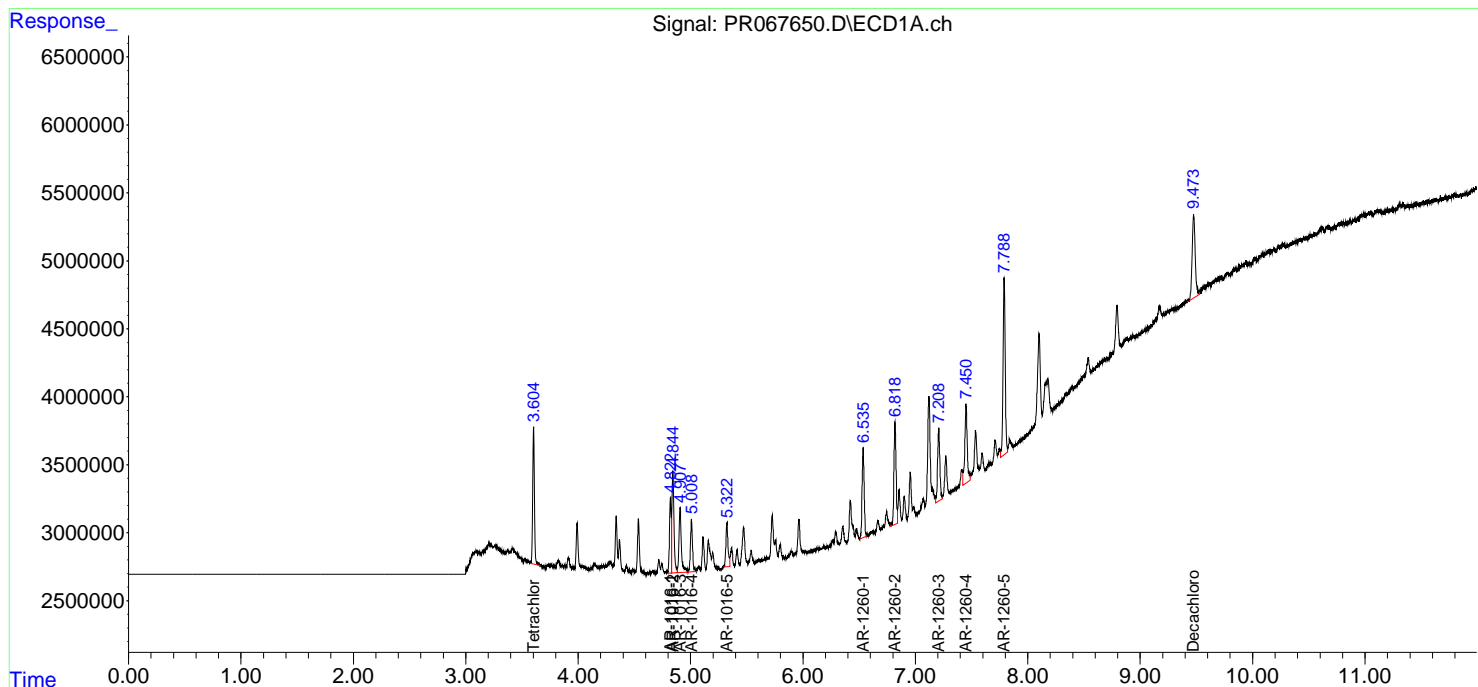
(f)=RT Delta > 1/2 Window (#)=Amounts differ by > 25% (m)=manual int.

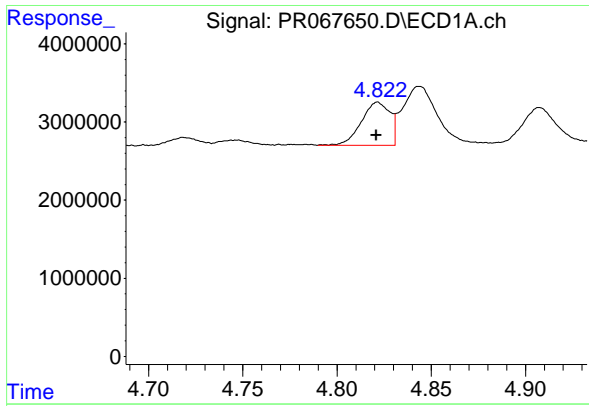
Data Path : Z:\pestpcbsrv\HPCHEM1\ECD_R\Data\PR071524\
 Data File : PR067650.D
 Signal(s) : Signal #1: ECD1A.ch Signal #2: ECD2B.ch
 Acq On : 15 Jul 2024 17:05
 Operator : AJ\MA
 Sample : AR1660ICC100
 Misc :
 ALS Vial : 3 Sample Multiplier: 1

Instrument :
 ECD_R
 ClientSampleId :
 AR16601204

Integration File signal 1: autoint1.e
 Integration File signal 2: autoint2.e
 Quant Time: Jul 16 07:07:22 2024
 Quant Method : Z:\pestpcbsrv\HPCHEM1\ECD_R\Method\PR071524CLP.M
 Quant Title : GC EXTRACTABLES
 QLast Update : Tue Jul 16 07:06:55 2024
 Response via : Initial Calibration
 Integrator: ChemStation

Volume Inj. : 1 µl
 Signal #1 Phase : ZB MR1 Signal #2 Phase: ZB MR2
 Signal #1 Info : 30Mx0.32mmx 0.5µm Signal #2 Info : 30M x 0.32mm x 0.25µm

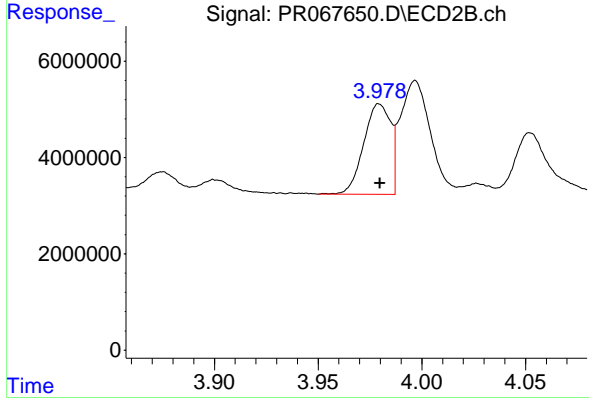




#3 AR-1016-1

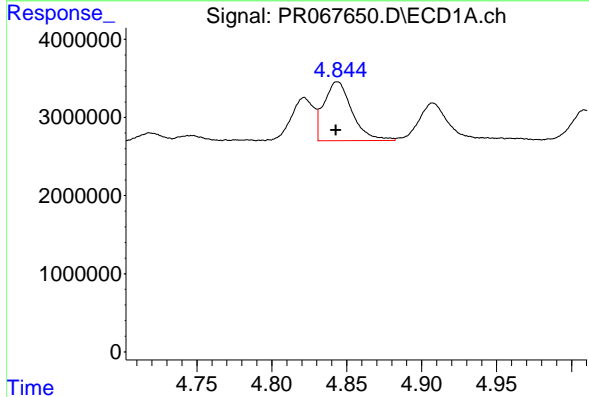
R.T.: 4.822 min
 Delta R.T.: 0.000 min
 Response: 5848733
 Conc: 105.00 ng/ml

Instrument :
 ECD_R
 ClientSampleId :
 AR16601204



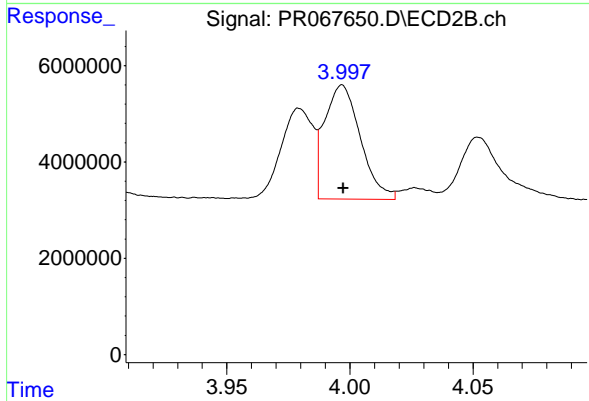
#3 AR-1016-1

R.T.: 3.980 min
 Delta R.T.: 0.000 min
 Response: 16980567
 Conc: 109.02 ng/ml



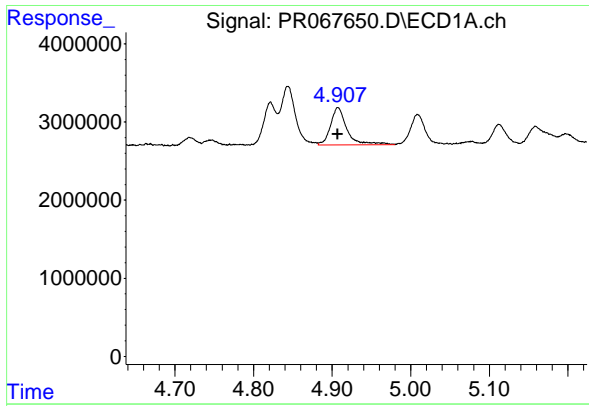
#4 AR-1016-2

R.T.: 4.844 min
 Delta R.T.: 0.000 min
 Response: 9826432
 Conc: 106.26 ng/ml



#4 AR-1016-2

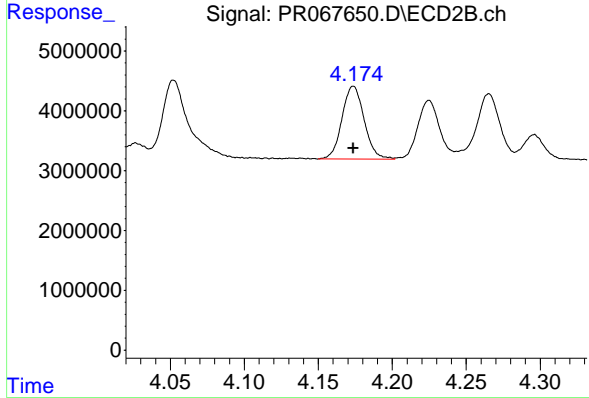
R.T.: 3.997 min
 Delta R.T.: 0.000 min
 Response: 24078171
 Conc: 108.94 ng/ml



#5 AR-1016-3

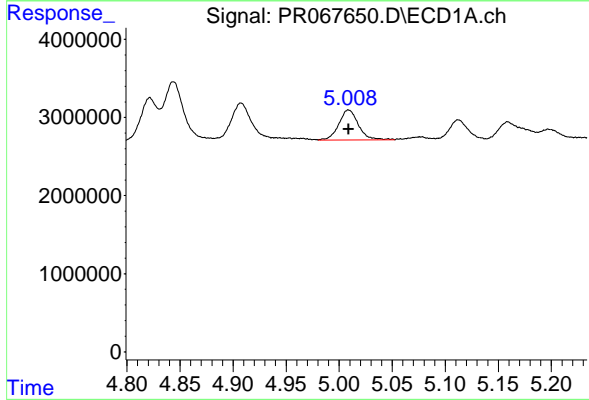
R.T.: 4.907 min
 Delta R.T.: 0.000 min
 Response: 6972664
 Conc: 122.32 ng/ml

Instrument :
 ECD_R
 ClientSampleId :
 AR16601204



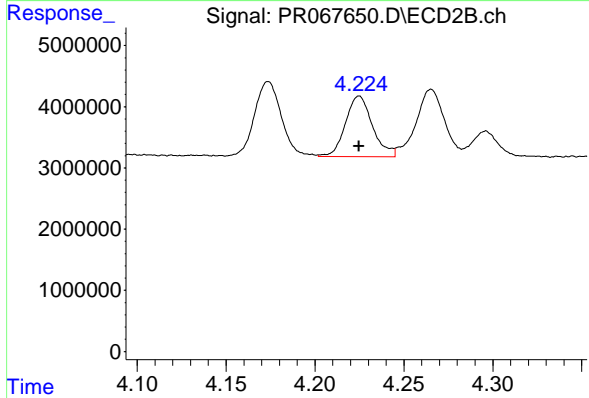
#5 AR-1016-3

R.T.: 4.174 min
 Delta R.T.: 0.000 min
 Response: 12756541
 Conc: 107.98 ng/ml



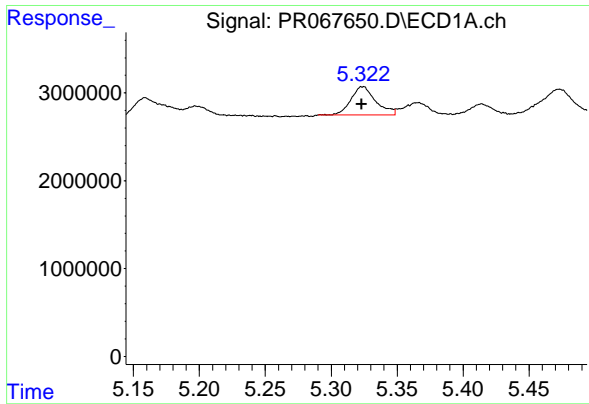
#6 AR-1016-4

R.T.: 5.009 min
 Delta R.T.: 0.000 min
 Response: 4931686
 Conc: 105.28 ng/ml



#6 AR-1016-4

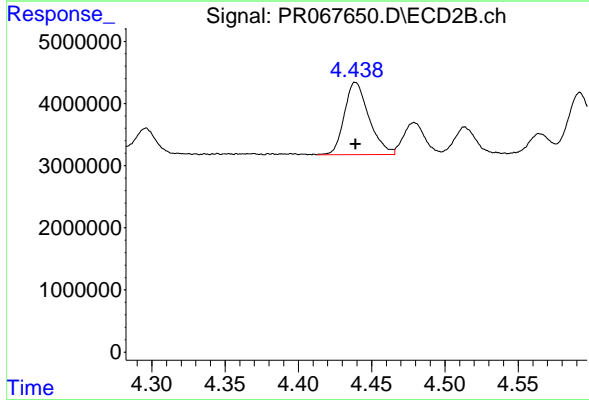
R.T.: 4.225 min
 Delta R.T.: 0.000 min
 Response: 10427087
 Conc: 114.00 ng/ml



#7 AR-1016-5

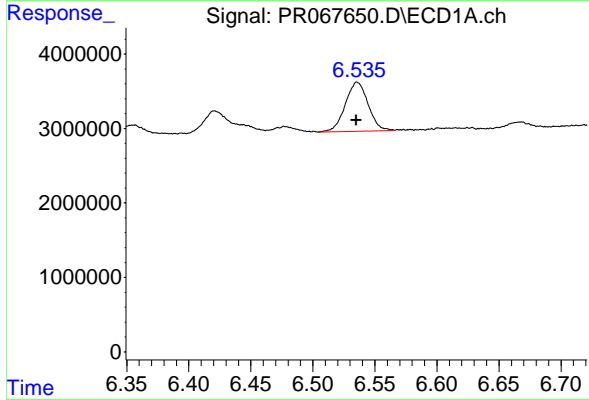
R.T.: 5.324 min
 Delta R.T.: 0.000 min
 Response: 4219174
 Conc: 101.37 ng/ml

Instrument : ECD_R
 ClientSampleId : AR16601204



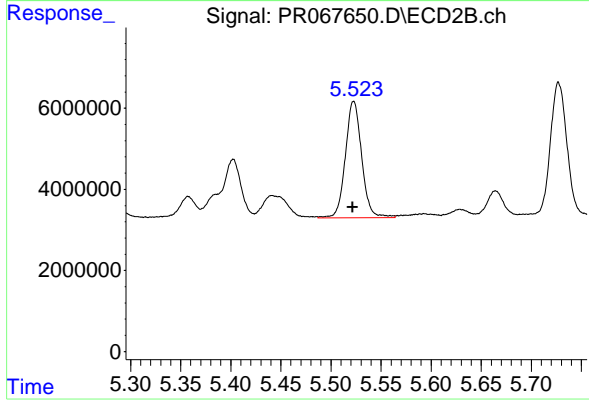
#7 AR-1016-5

R.T.: 4.439 min
 Delta R.T.: 0.000 min
 Response: 13590674
 Conc: 111.18 ng/ml



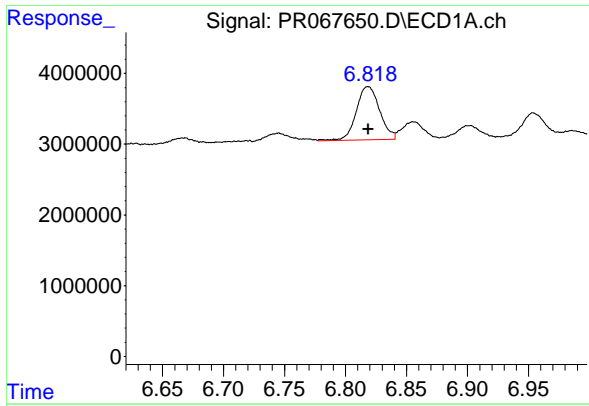
#31 AR-1260-1

R.T.: 6.536 min
 Delta R.T.: 0.000 min
 Response: 8427714
 Conc: 104.75 ng/ml



#31 AR-1260-1

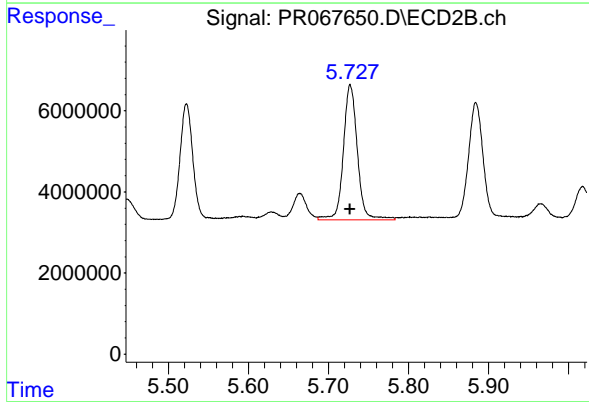
R.T.: 5.523 min
 Delta R.T.: 0.000 min
 Response: 32568893
 Conc: 114.39 ng/ml



#32 AR-1260-2

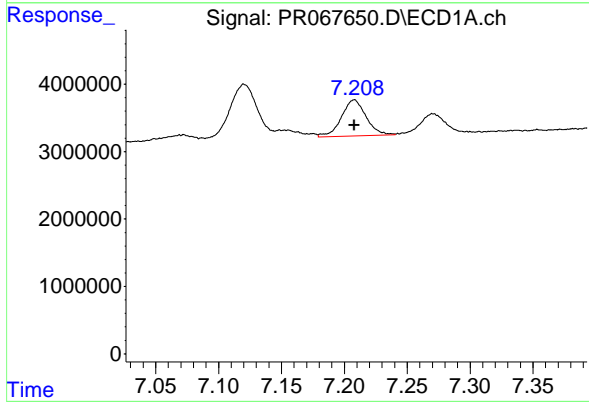
R.T.: 6.818 min
 Delta R.T.: 0.000 min
 Response: 10019199
 Conc: 108.83 ng/ml

Instrument :
 ECD_R
 ClientSampleId :
 AR16601204



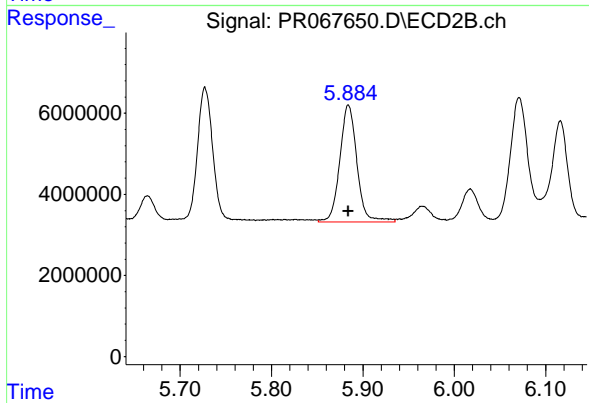
#32 AR-1260-2

R.T.: 5.727 min
 Delta R.T.: 0.000 min
 Response: 40576701
 Conc: 115.81 ng/ml



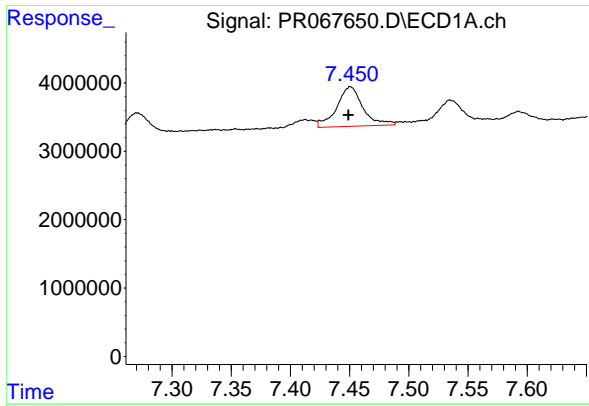
#33 AR-1260-3

R.T.: 7.208 min
 Delta R.T.: 0.000 min
 Response: 7312405
 Conc: 106.26 ng/ml



#33 AR-1260-3

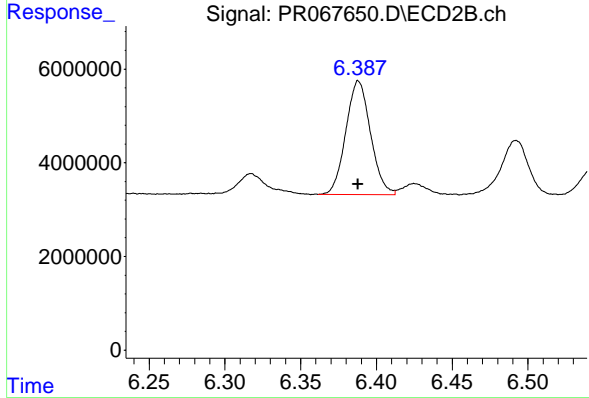
R.T.: 5.884 min
 Delta R.T.: 0.000 min
 Response: 37705037
 Conc: 115.41 ng/ml



#34 AR-1260-4

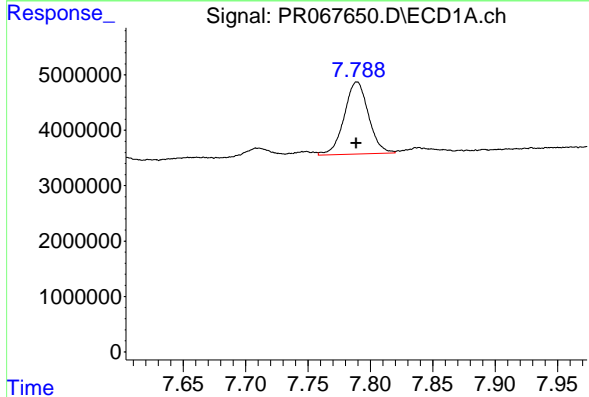
R.T.: 7.451 min
 Delta R.T.: 0.001 min
 Response: 8934008
 Conc: 109.00 ng/ml

Instrument :
 ECD_R
 ClientSampleId :
 AR16601204



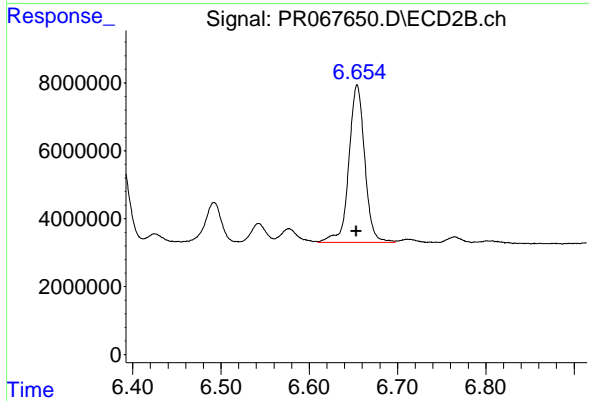
#34 AR-1260-4

R.T.: 6.388 min
 Delta R.T.: 0.000 min
 Response: 27471605
 Conc: 107.64 ng/ml



#35 AR-1260-5

R.T.: 7.789 min
 Delta R.T.: 0.000 min
 Response: 17570265
 Conc: 100.81 ng/ml



#35 AR-1260-5

R.T.: 6.654 min
 Delta R.T.: 0.001 min
 Response: 57793687
 Conc: 104.87 ng/ml