

Data Path : Z:\pestpcbsrv\HPCHEM1\ECD_R\Data\PR071524\
 Data File : PR067657.D
 Signal(s) : Signal #1: ECD1A.ch Signal #2: ECD2B.ch
 Acq On : 15 Jul 2024 18:48
 Operator : AJ\MA
 Sample : AR1221ICC400
 Misc :
 ALS Vial : 10 Sample Multiplier: 1

Instrument :
 ECD_R
ClientSampleId :
 AR12213211

Integration File signal 1: autoint1.e
 Integration File signal 2: autoint2.e
 Quant Time: Jul 16 07:19:51 2024
 Quant Method : Z:\pestpcbsrv\HPCHEM1\ECD_R\Method\PR071524CLP.M
 Quant Title : GC EXTRACTABLES
 QLast Update : Tue Jul 16 07:18:59 2024
 Response via : Initial Calibration
 Integrator: ChemStation

Volume Inj. : 1 µl
 Signal #1 Phase : ZB MR1 Signal #2 Phase: ZB MR2
 Signal #1 Info : 30Mx0.32mmx 0.5µm Signal #2 Info : 30M x 0.32mm x 0.25µm

Compound	RT#1	RT#2	Resp#1	Resp#2	ng/ml	ng/ml

System Monitoring Compounds						
1) SA Tetrachlo...	3.604	2.874	46946439	102.2E6	20.000	20.000
2) SA Decachlor...	9.472	8.093	42767818	76512654	40.000	40.000
Target Compounds						
8) L2 AR-1221-1	3.826	3.097	8804930	23903198	400.000	400.000
9) L2 AR-1221-2	3.914	3.183	6719199	16687030	400.000	400.000
10) L2 AR-1221-3	3.991	3.258	24424451	55651744	400.000	400.000

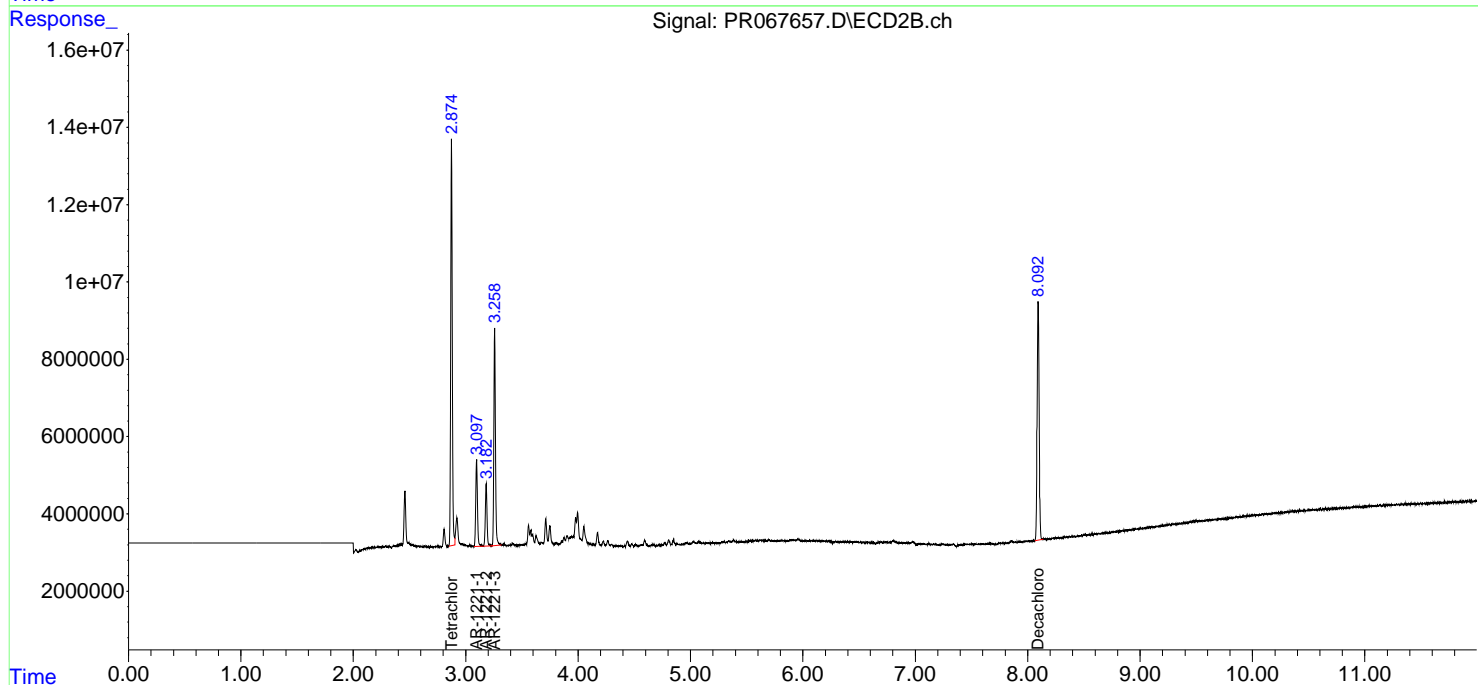
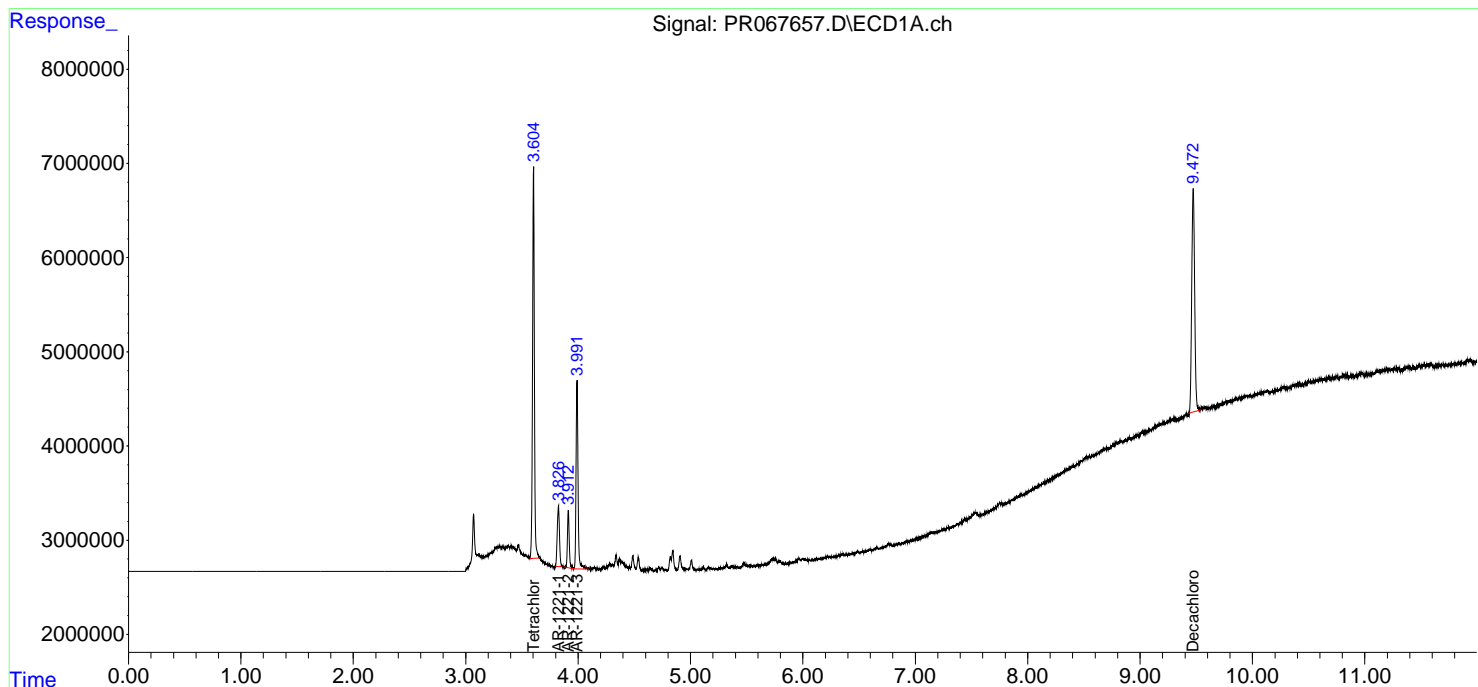
(f)=RT Delta > 1/2 Window (#)=Amounts differ by > 25% (m)=manual int.

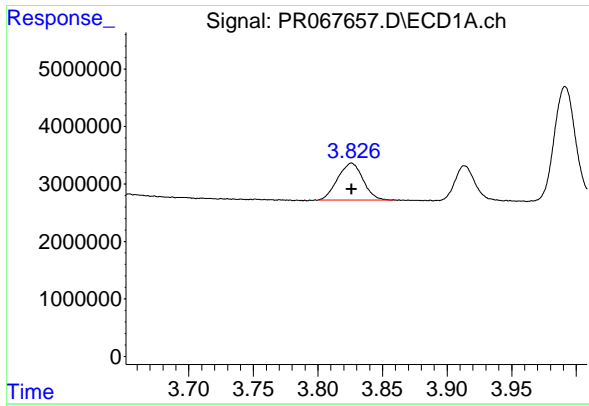
Data Path : Z:\pestpcbsrv\HPCHEM1\ECD_R\Data\PR071524\
 Data File : PR067657.D
 Signal(s) : Signal #1: ECD1A.ch Signal #2: ECD2B.ch
 Acq On : 15 Jul 2024 18:48
 Operator : AJ\MA
 Sample : AR1221ICC400
 Misc :
 ALS Vial : 10 Sample Multiplier: 1

Instrument :
 ECD_R
 ClientSampleId :
 AR12213211

Integration File signal 1: autoint1.e
 Integration File signal 2: autoint2.e
 Quant Time: Jul 16 07:19:51 2024
 Quant Method : Z:\pestpcbsrv\HPCHEM1\ECD_R\Method\PR071524CLP.M
 Quant Title : GC EXTRACTABLES
 QLast Update : Tue Jul 16 07:18:59 2024
 Response via : Initial Calibration
 Integrator: ChemStation

Volume Inj. : 1 µl
 Signal #1 Phase : ZB MR1 Signal #2 Phase: ZB MR2
 Signal #1 Info : 30Mx0.32mmx 0.5µm Signal #2 Info : 30M x 0.32mm x 0.25µm

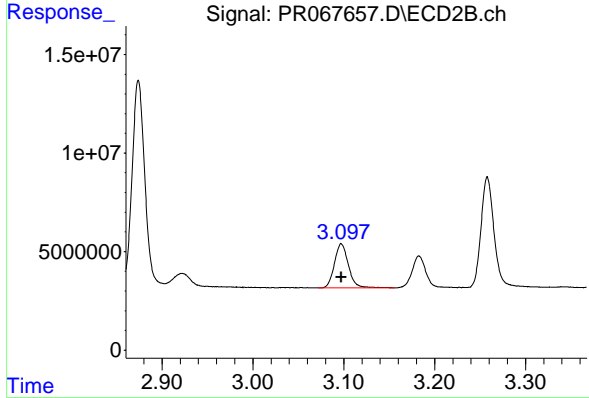




#8 AR-1221-1

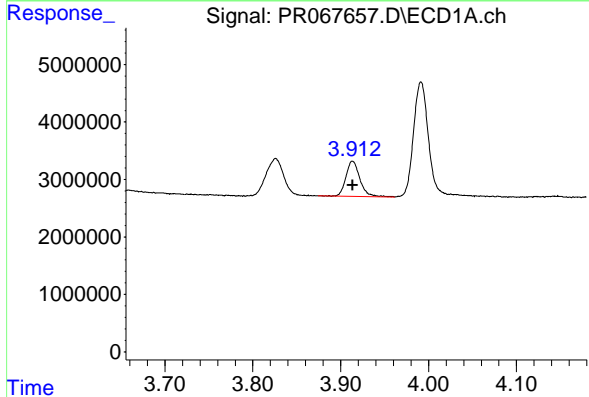
R.T.: 3.826 min
Delta R.T.: 0.000 min
Response: 8804930
Conc: 400.00 ng/ml

Instrument :
ECD_R
Client SampleId :
AR12213211



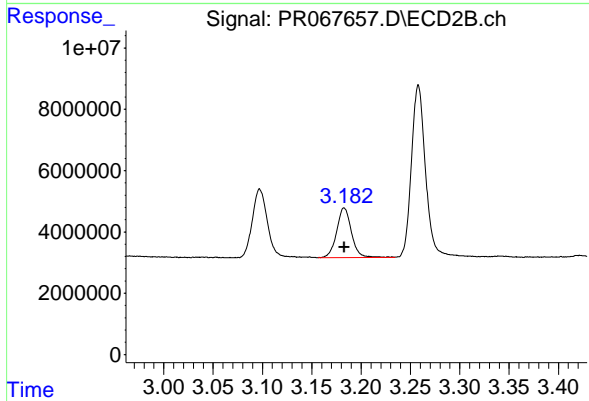
#8 AR-1221-1

R.T.: 3.097 min
Delta R.T.: 0.000 min
Response: 23903198
Conc: 400.00 ng/ml



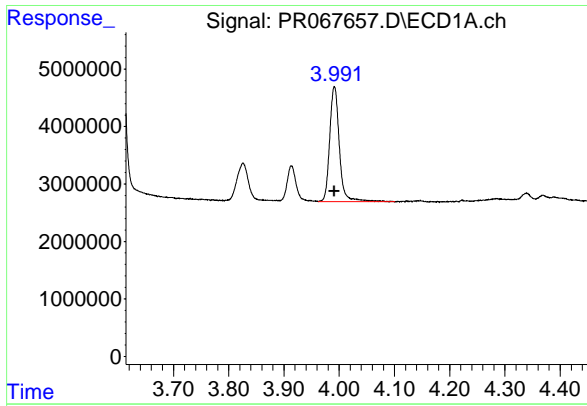
#9 AR-1221-2

R.T.: 3.914 min
Delta R.T.: 0.000 min
Response: 6719199
Conc: 400.00 ng/ml



#9 AR-1221-2

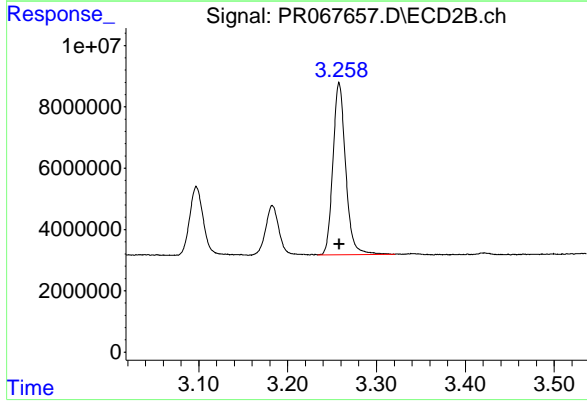
R.T.: 3.183 min
Delta R.T.: 0.000 min
Response: 16687030
Conc: 400.00 ng/ml



#10 AR-1221-3

R.T.: 3.991 min
Delta R.T.: 0.000 min
Response: 24424451
Conc: 400.00 ng/ml

Instrument :
ECD_R
ClientSampleId :
AR12213211



#10 AR-1221-3

R.T.: 3.258 min
Delta R.T.: 0.000 min
Response: 55651744
Conc: 400.00 ng/ml