

Data Path : Z:\pestpcbsrv\HPCHEM1\ECD_R\Data\PR071524\
 Data File : PR067675.D
 Signal(s) : Signal #1: ECD1A.ch Signal #2: ECD2B.ch
 Acq On : 15 Jul 2024 23:13
 Operator : AJ\MA
 Sample : AR1254ICC100
 Misc :
 ALS Vial : 28 Sample Multiplier: 1

Instrument :
 ECD_R
ClientSampleId :
 AR12541229

Integration File signal 1: autoint1.e
 Integration File signal 2: autoint2.e
 Quant Time: Jul 16 08:07:17 2024
 Quant Method : Z:\pestpcbsrv\HPCHEM1\ECD_R\Method\PR071524CLP.M
 Quant Title : GC EXTRACTABLES
 QLast Update : Tue Jul 16 08:06:48 2024
 Response via : Initial Calibration
 Integrator: ChemStation

Volume Inj. : 1 µl
 Signal #1 Phase : ZB MR1 Signal #2 Phase: ZB MR2
 Signal #1 Info : 30Mx0.32mmx 0.5µm Signal #2 Info : 30M x 0.32mm x 0.25µm

Compound	RT#1	RT#2	Resp#1	Resp#2	ng/ml	ng/ml

System Monitoring Compounds						
1) SA Tetrachlo...	3.604	2.874	11346097	27047295	4.970	5.201
2) SA Decachlor...	9.470	8.090	12318986	20559646	10.799	10.511
Target Compounds						
26) L6 AR-1254-1	5.725	4.806	8520794	29516354	122.421	110.579
27) L6 AR-1254-2	5.962	4.964	11982555	27383870	110.990	114.436
28) L6 AR-1254-3	6.353	5.383	13389699	47300204	107.734	114.303
29) L6 AR-1254-4	6.665	5.629	9209979	31692437	106.572	118.391
30) L6 AR-1254-5	7.120	6.070	10237220	44783883	106.594	137.820 #

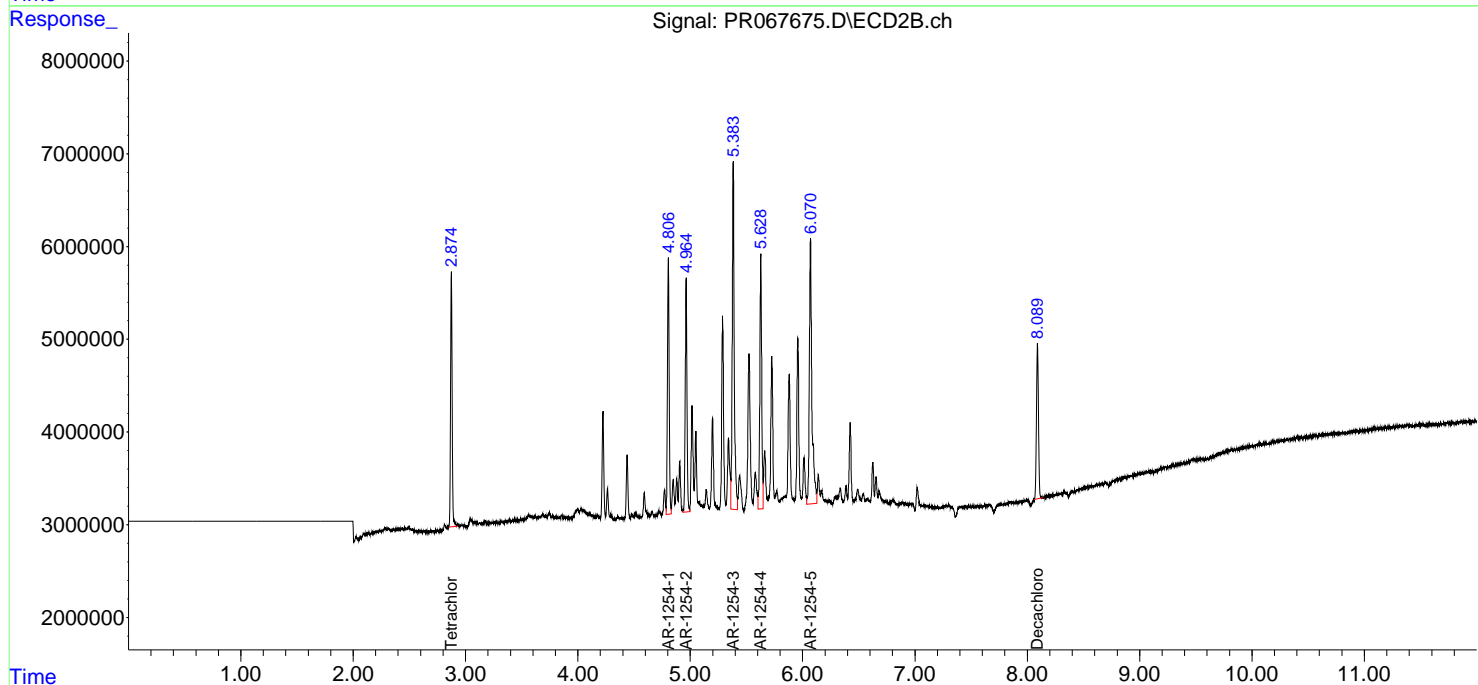
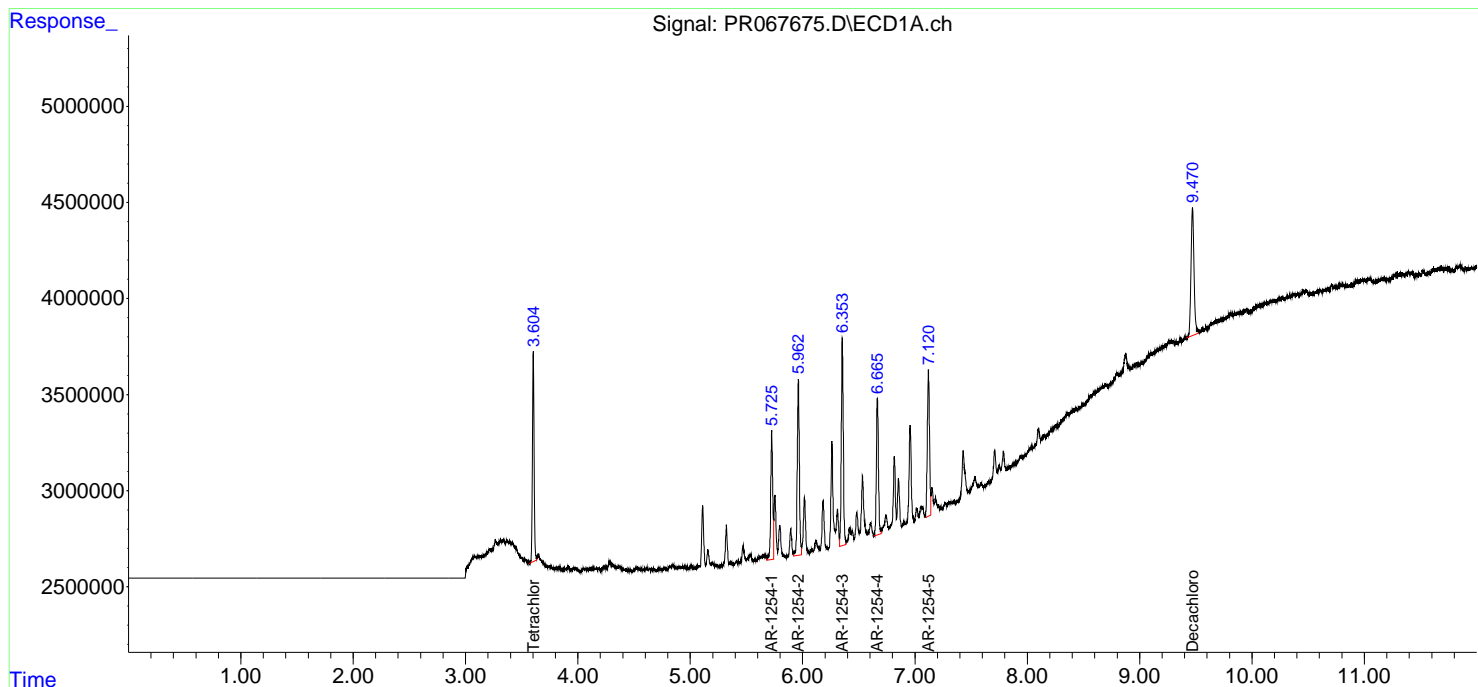
(f)=RT Delta > 1/2 Window (#)=Amounts differ by > 25% (m)=manual int.

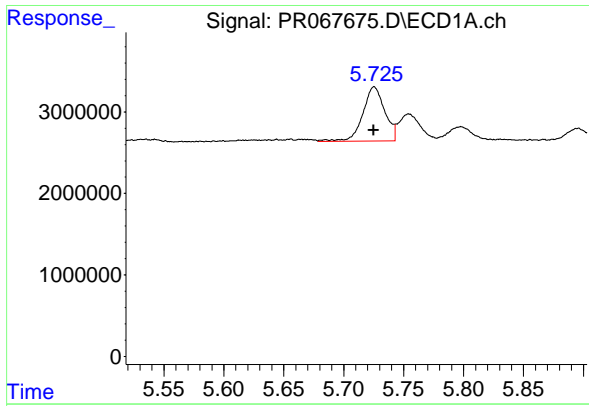
Data Path : Z:\pestpcbsrv\HPCHEM1\ECD_R\Data\PR071524\
 Data File : PR067675.D
 Signal(s) : Signal #1: ECD1A.ch Signal #2: ECD2B.ch
 Acq On : 15 Jul 2024 23:13
 Operator : AJ\MA
 Sample : AR1254ICC100
 Misc :
 ALS Vial : 28 Sample Multiplier: 1

Instrument :
 ECD_R
 ClientSampleId :
 AR12541229

Integration File signal 1: autoint1.e
 Integration File signal 2: autoint2.e
 Quant Time: Jul 16 08:07:17 2024
 Quant Method : Z:\pestpcbsrv\HPCHEM1\ECD_R\Method\PR071524CLP.M
 Quant Title : GC EXTRACTABLES
 QLast Update : Tue Jul 16 08:06:48 2024
 Response via : Initial Calibration
 Integrator: ChemStation

Volume Inj. : 1 µl
 Signal #1 Phase : ZB MR1 Signal #2 Phase: ZB MR2
 Signal #1 Info : 30Mx0.32mmx 0.5µm Signal #2 Info : 30M x 0.32mm x 0.25µm

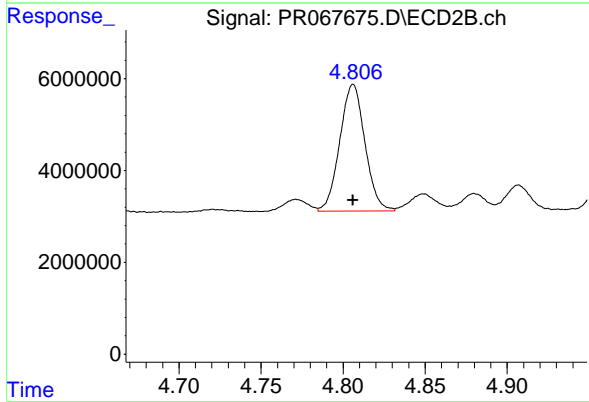




#26 AR-1254-1

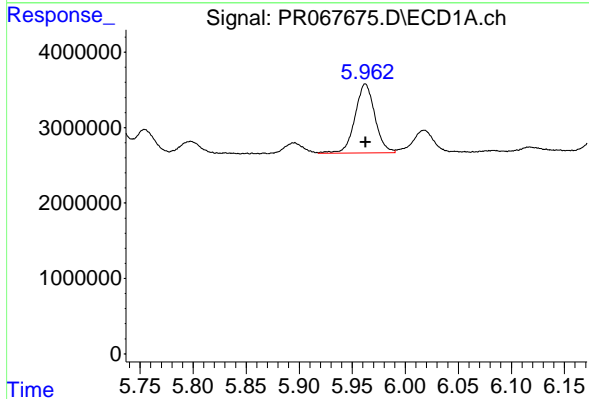
R.T.: 5.725 min
 Delta R.T.: 0.000 min
 Response: 8520794
 Conc: 122.42 ng/ml

Instrument :
 ECD_R
 ClientSampleId :
 AR12541229



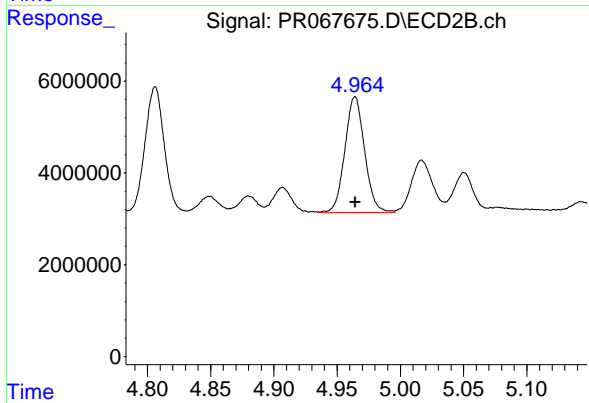
#26 AR-1254-1

R.T.: 4.806 min
 Delta R.T.: 0.000 min
 Response: 29516354
 Conc: 110.58 ng/ml



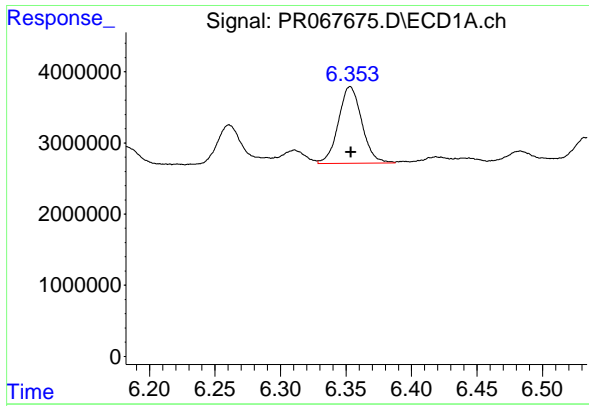
#27 AR-1254-2

R.T.: 5.962 min
 Delta R.T.: 0.000 min
 Response: 11982555
 Conc: 110.99 ng/ml



#27 AR-1254-2

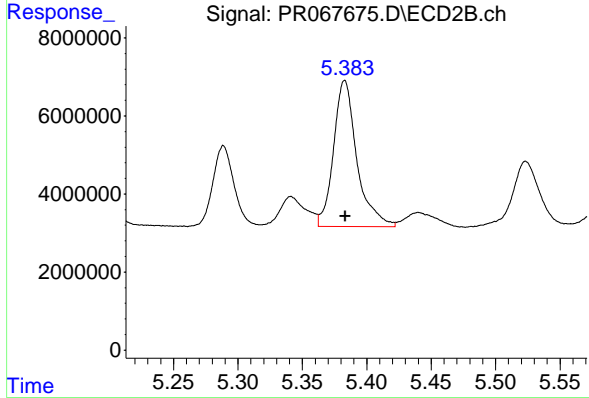
R.T.: 4.964 min
 Delta R.T.: 0.000 min
 Response: 27383870
 Conc: 114.44 ng/ml



#28 AR-1254-3

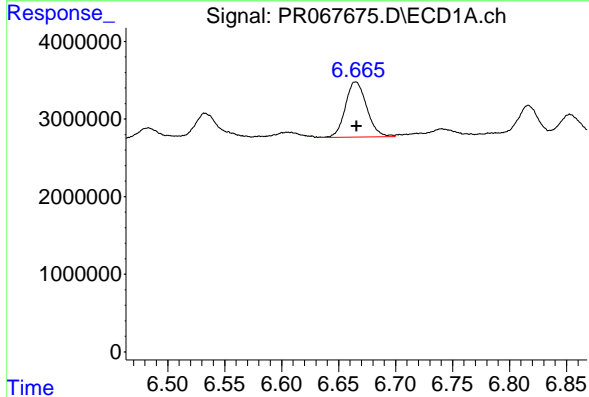
R.T.: 6.353 min
 Delta R.T.: 0.000 min
 Response: 13389699
 Conc: 107.73 ng/ml

Instrument :
 ECD_R
 ClientSampleId :
 AR12541229



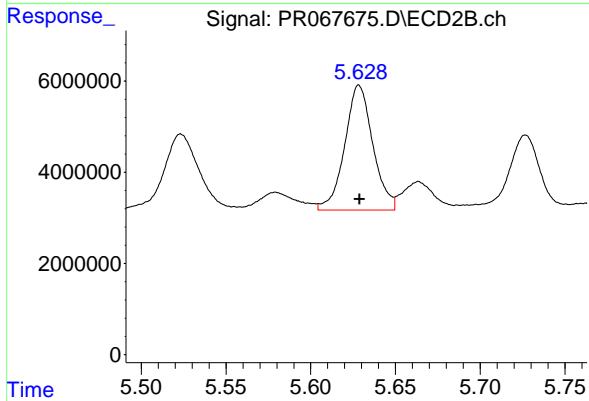
#28 AR-1254-3

R.T.: 5.383 min
 Delta R.T.: 0.000 min
 Response: 47300204
 Conc: 114.30 ng/ml



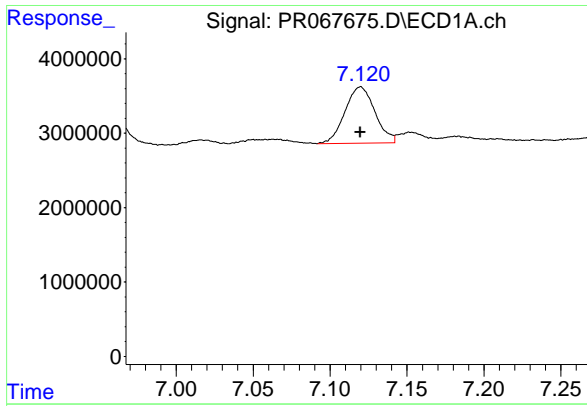
#29 AR-1254-4

R.T.: 6.665 min
 Delta R.T.: -0.001 min
 Response: 9209979
 Conc: 106.57 ng/ml



#29 AR-1254-4

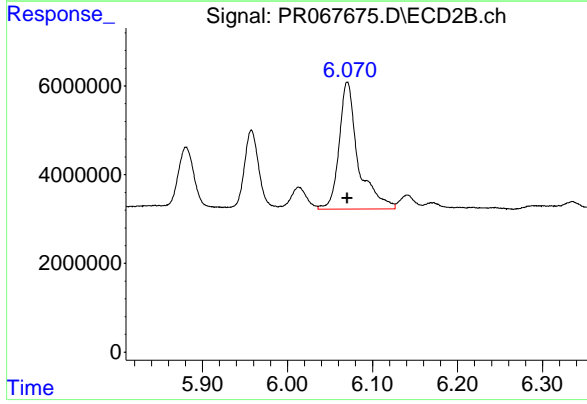
R.T.: 5.629 min
 Delta R.T.: 0.000 min
 Response: 31692437
 Conc: 118.39 ng/ml



#30 AR-1254-5

R.T.: 7.120 min
Delta R.T.: 0.000 min
Response: 10237220
Conc: 106.59 ng/ml

Instrument :
ECD_R
ClientSampleId :
AR12541229



#30 AR-1254-5

R.T.: 6.070 min
Delta R.T.: 0.000 min
Response: 44783883
Conc: 137.82 ng/ml