

Data Path : Z:\pestpcbsrv\HPCHEM1\ECD\_R\Data\PR072120\  
 Data File : PR046348.D  
 Signal(s) : Signal #1: ECD1A.ch Signal #2: ECD2B.ch  
 Acq On : 21 Jul 2020 13:00  
 Operator : AJ\MA  
 Sample : L3216-09  
 Misc : AR1242 LOD 25 PPB  
 ALS Vial : 17 Sample Multiplier: 1

Instrument :  
 ECD\_R  
 ClientSampled :

Integration File signal 1: autoint1.e  
 Integration File signal 2: autoint2.e  
 Quant Time: Jul 21 15:49:52 2020  
 Quant Method : Z:\pestpcbsrv\HPCHEM1\ECD\_R\Method\PR071520.M  
 Quant Title : GC EXTRACTABLES  
 QLast Update : Mon Jul 20 12:51:25 2020  
 Response via : Initial Calibration  
 Integrator: ChemStation

Volume Inj. : 2 µl  
 Signal #1 Phase : ZB-MR2 Signal #2 Phase: ZB-MR2  
 Signal #1 Info : 30Mx0.32mmx 0.50µ Signal #2 Info : 30M x 0.32mm x 0.25µm

Compound	RT#1	RT#2	Resp#1	Resp#2	ng/ml	ng/ml
System Monitoring Compounds						
1) SA Tetrachlo...	4.765	3.989	25723691	184.2E6	13.984	14.965
2) SA Decachlor...	10.771	9.120	31393135	270.4E6	15.882	17.464
Target Compounds						
3) L1 AR-1016-1	5.956	5.089	1026202	8613537	14.640	17.378
4) L1 AR-1016-2	5.979	5.109	1356200	10568778	13.720	15.382
5) L1 AR-1016-3	6.042	5.287	838227	5485515	14.095	17.112
6) L1 AR-1016-4	6.145	5.327	678510	4241070	13.608	15.777
7) L1 AR-1016-5	6.440	5.545	1495968	18847154	30.418	50.687 #
8) L2 AR-1221-1	4.979	0.000	118563	0	5.997	N.D. #
9) L2 AR-1221-2	5.080	4.294	471778	3759881	32.137	39.500
10) L2 AR-1221-3	5.148	4.367	545429	3904829	11.623	12.407
11) L3 AR-1232-1	5.148	4.367	545429	3904829	14.252	14.515
12) L3 AR-1232-2	5.685	5.109	792746	10568778	40.974	37.702
13) L3 AR-1232-3	5.979	5.287	1356200	5485515	34.014	42.237
14) L3 AR-1232-4	6.145	5.371	678510	4526293	34.052	36.608
15) L3 AR-1232-5	6.229	5.545	895215	18847154	59.363	137.255 #
16) L4 AR-1242-1	5.956	5.089	1026202	8613537	18.983	22.646
17) L4 AR-1242-2	5.979	5.109	1356200	10568778	17.896	20.179
18) L4 AR-1242-3	6.042	5.287	838227	5485515	18.326	21.496
19) L4 AR-1242-4	6.145	5.371	678510	4526293	17.754	17.401
20) L4 AR-1242-5	6.884	5.899	2237061	18860223	50.558	51.090
21) L5 AR-1248-1	5.956	5.089	1026202	8613537	25.472	29.870
22) L5 AR-1248-2	6.229	5.327	895215	4241070	16.410	12.019 #
23) L5 AR-1248-3	6.440	5.371	1495968	4526293	24.103	12.094 #
24) L5 AR-1248-4	6.845	5.545	1805892	18847154	24.512	40.148 #
25) L5 AR-1248-5	6.884	5.942	2237061	28088819	31.852	58.020 #
26) L6 AR-1254-1	6.819	5.899	2918668	18860223	37.802	23.946 #
27) L6 AR-1254-2	7.048	6.047	2303033	27024276	18.836	39.304 #
28) L6 AR-1254-3	7.406	6.455	1119788	10393516	8.350	8.755
29) L6 AR-1254-4	7.694	6.683	970889	1636471	9.456	2.124 #
32) L7 AR-1260-2	7.826	6.756f	429747	2327063	3.742	2.632 #
35) L7 AR-1260-5	8.784	0.000	99351	0	0.461	N.D. #
37) L8 AR-1262-2	8.784	0.000	99351	0	0.439	N.D. #
39) L8 AR-1262-4	0.000	7.971f	0	13972063	N.D.	9.851 #
42) L9 AR-1268-2	0.000	7.971f	0	13972063	N.D.	6.206 #
43) L9 AR-1268-3	9.471	0.000	339244	0	1.550	N.D. #
45) L9 AR-1268-5	10.407	0.000	410234	0	0.577	N.D. #

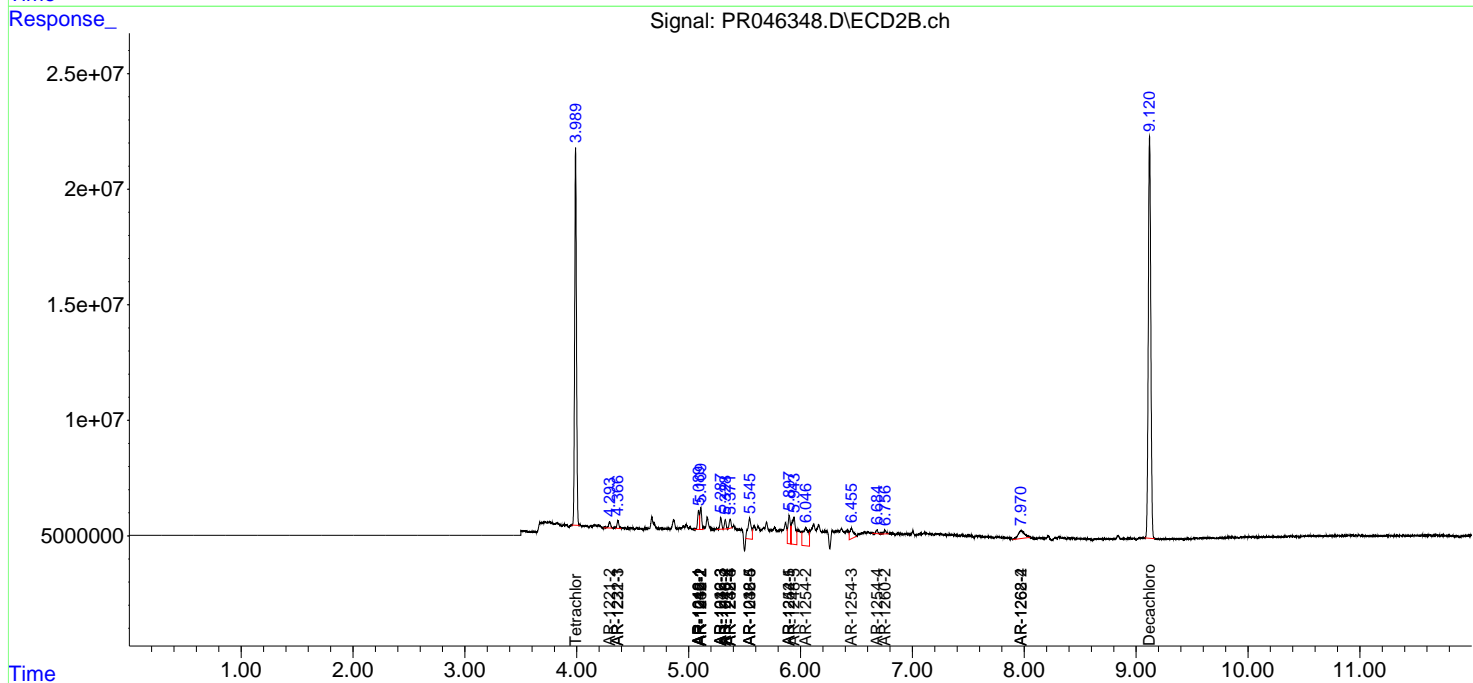
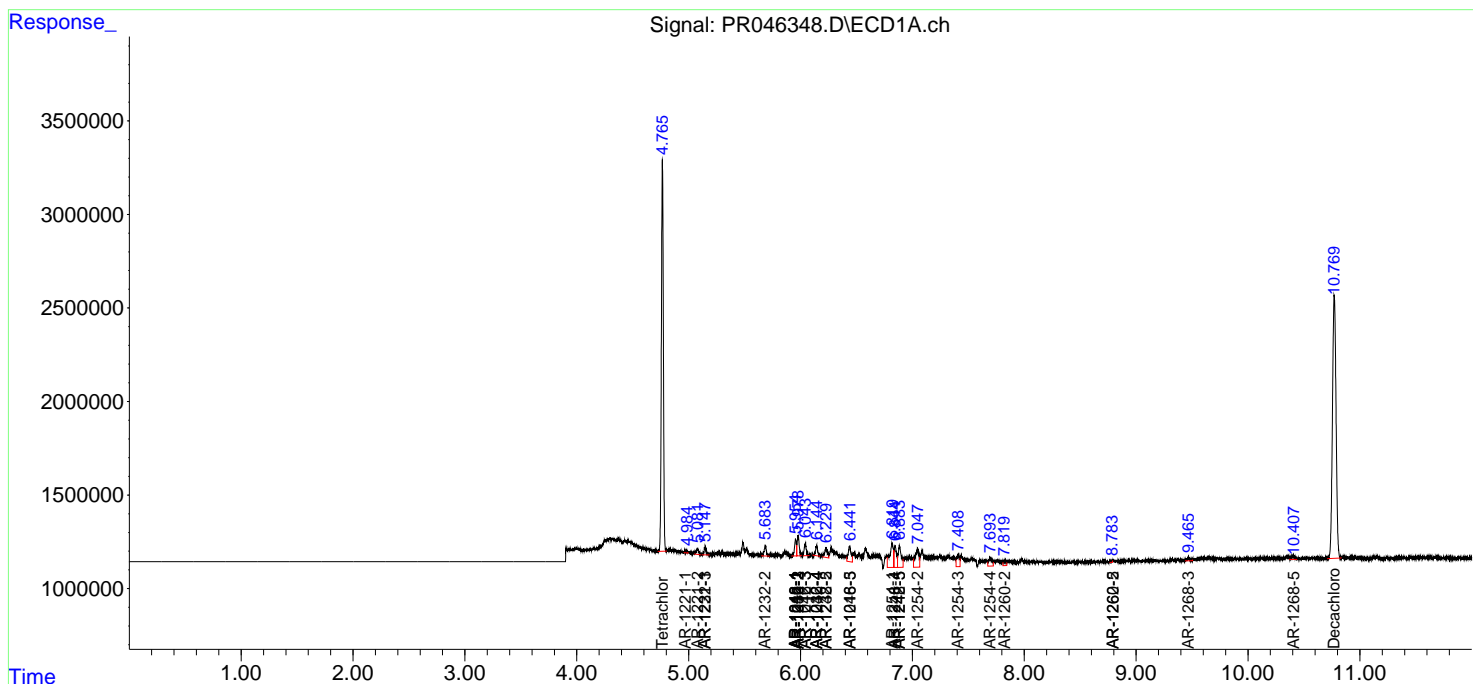
(f)=RT Delta > 1/2 Window (#)=Amounts differ by > 25% (m)=manual int.

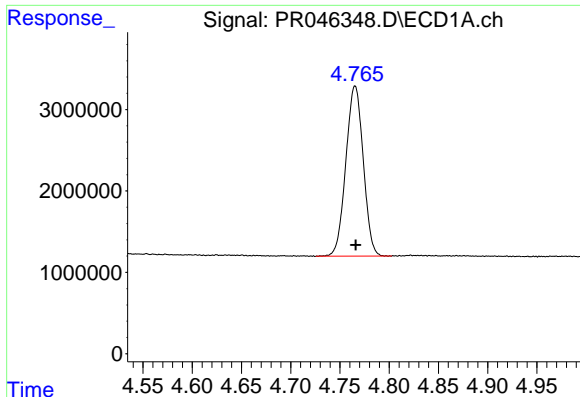
Data Path : Z:\pestpcbsrv\HPCHEM1\ECD\_R\Data\PR072120\  
 Data File : PR046348.D  
 Signal(s) : Signal #1: ECD1A.ch Signal #2: ECD2B.ch  
 Acq On : 21 Jul 2020 13:00  
 Operator : AJ\MA  
 Sample : L3216-09  
 Misc : AR1242 LOD 25 PPB  
 ALS Vial : 17 Sample Multiplier: 1

Instrument :  
 ECD\_R  
 ClientSampled :

Integration File signal 1: autoint1.e  
 Integration File signal 2: autoint2.e  
 Quant Time: Jul 21 15:49:52 2020  
 Quant Method : Z:\pestpcbsrv\HPCHEM1\ECD\_R\Method\PR071520.M  
 Quant Title : GC EXTRACTABLES  
 QLast Update : Mon Jul 20 12:51:25 2020  
 Response via : Initial Calibration  
 Integrator: ChemStation

Volume Inj. : 2 µl  
 Signal #1 Phase : ZB-MR1 Signal #2 Phase: ZB-MR2  
 Signal #1 Info : 30Mx0.32mmx 0.50µ Signal #2 Info : 30M x 0.32mm x 0.25µm

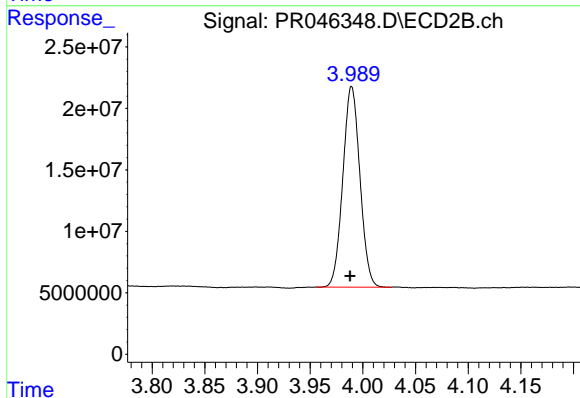




#1 Tetrachloro-m-xylene

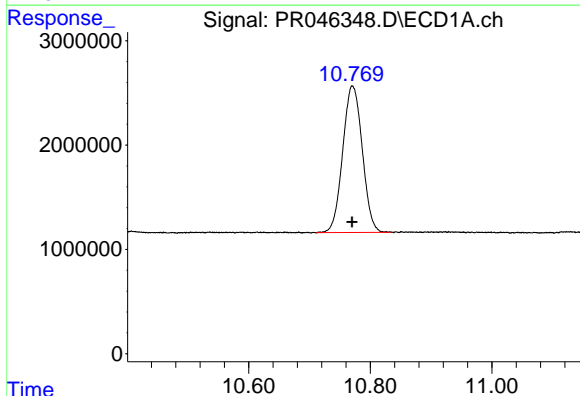
R.T.: 4.765 min  
 Delta R.T.: 0.000 min  
 Response: 25723691  
 Conc: 13.98 ng/ml

Instrument :  
 ECD\_R  
 ClientSampleId :



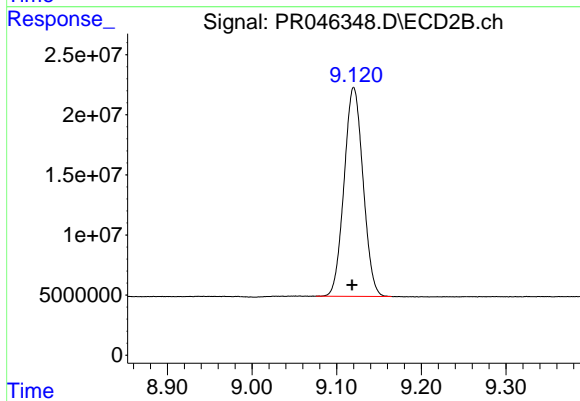
#1 Tetrachloro-m-xylene

R.T.: 3.989 min  
 Delta R.T.: 0.002 min  
 Response: 184163888  
 Conc: 14.97 ng/ml



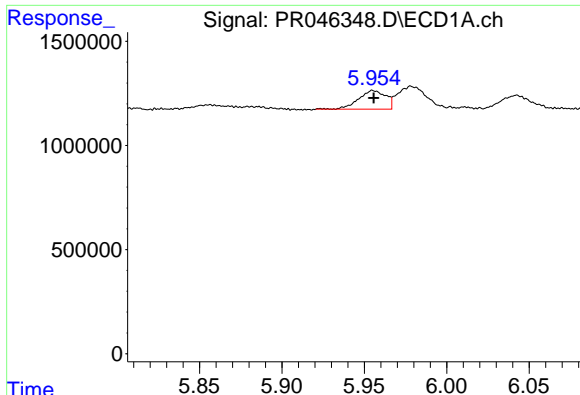
#2 Decachlorobiphenyl

R.T.: 10.771 min  
 Delta R.T.: 0.000 min  
 Response: 31393135  
 Conc: 15.88 ng/ml



#2 Decachlorobiphenyl

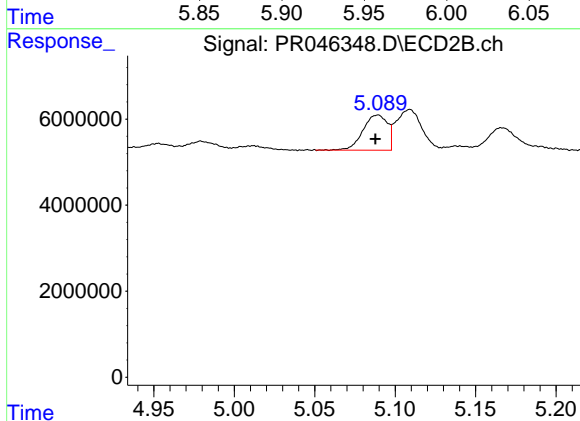
R.T.: 9.120 min  
 Delta R.T.: 0.002 min  
 Response: 270408411  
 Conc: 17.46 ng/ml



#3 AR-1016-1

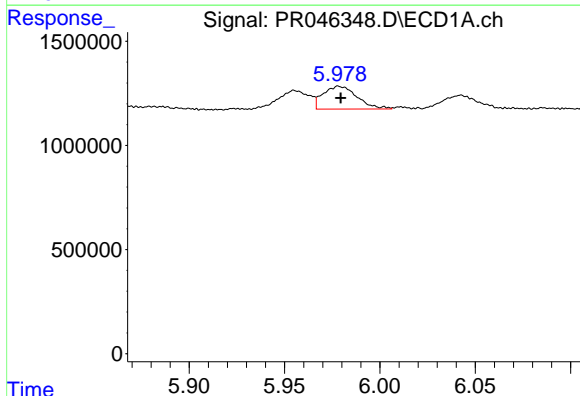
R.T.: 5.956 min  
Delta R.T.: 0.000 min  
Response: 1026202  
Conc: 14.64 ng/ml

Instrument :  
ECD\_R  
ClientSampleId :



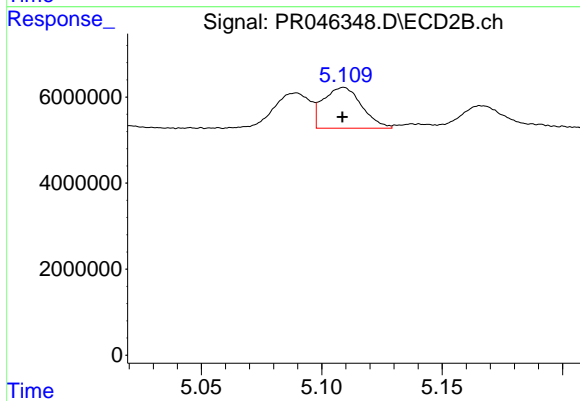
#3 AR-1016-1

R.T.: 5.089 min  
Delta R.T.: 0.001 min  
Response: 8613537  
Conc: 17.38 ng/ml



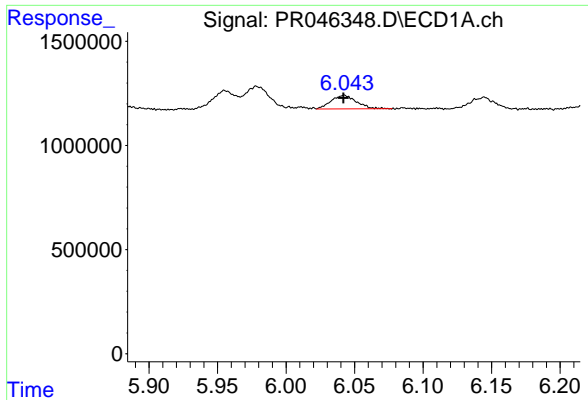
#4 AR-1016-2

R.T.: 5.979 min  
Delta R.T.: 0.000 min  
Response: 1356200  
Conc: 13.72 ng/ml



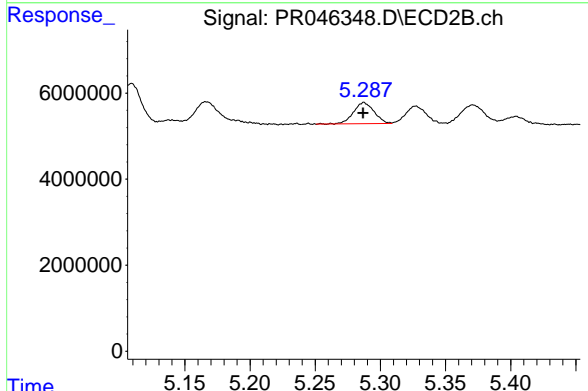
#4 AR-1016-2

R.T.: 5.109 min  
Delta R.T.: 0.000 min  
Response: 10568778  
Conc: 15.38 ng/ml

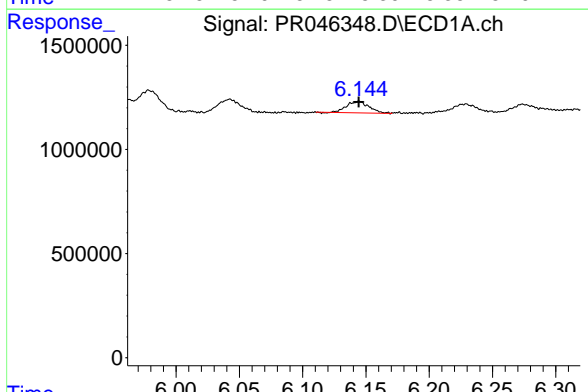


#5 AR-1016-3  
 R.T.: 6.042 min  
 Delta R.T.: 0.000 min  
 Response: 838227  
 Conc: 14.10 ng/ml

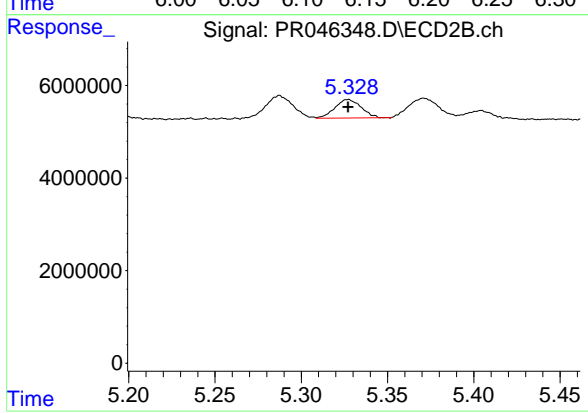
Instrument :  
 ECD\_R  
 ClientSampleId :



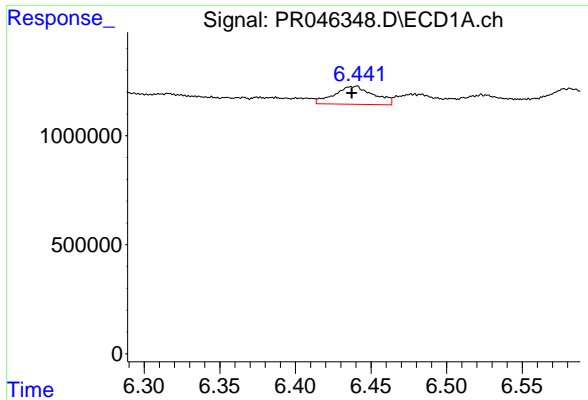
#5 AR-1016-3  
 R.T.: 5.287 min  
 Delta R.T.: 0.000 min  
 Response: 5485515  
 Conc: 17.11 ng/ml



#6 AR-1016-4  
 R.T.: 6.145 min  
 Delta R.T.: 0.000 min  
 Response: 678510  
 Conc: 13.61 ng/ml

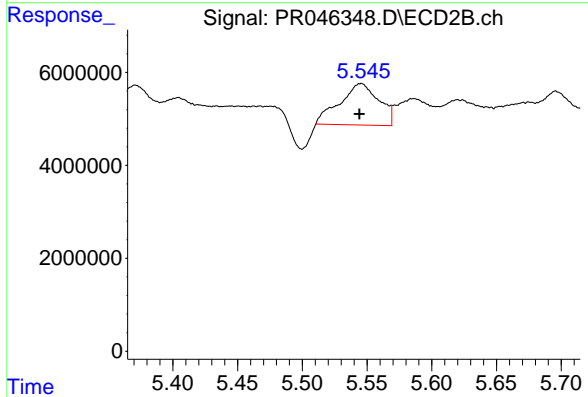


#6 AR-1016-4  
 R.T.: 5.327 min  
 Delta R.T.: 0.000 min  
 Response: 4241070  
 Conc: 15.78 ng/ml

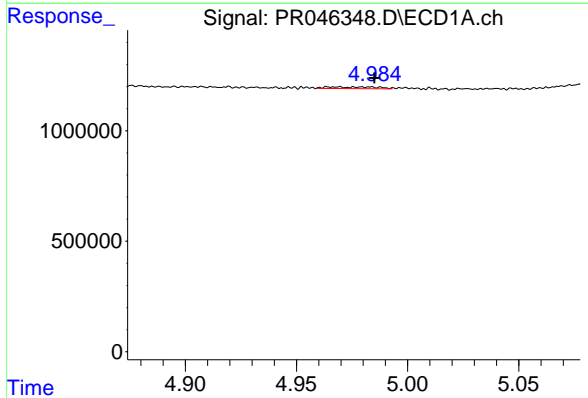


#7 AR-1016-5  
 R.T.: 6.440 min  
 Delta R.T.: 0.003 min  
 Response: 1495968  
 Conc: 30.42 ng/ml

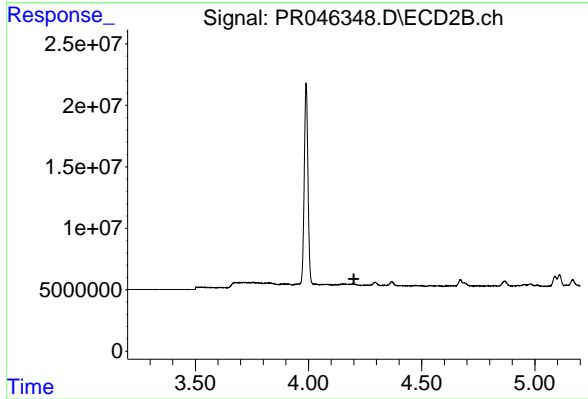
Instrument :  
 ECD\_R  
 ClientSampleId :



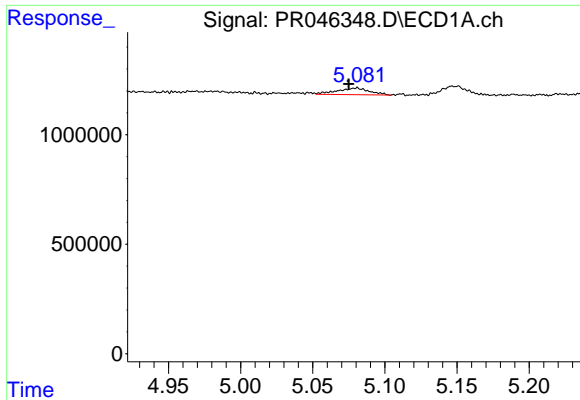
#7 AR-1016-5  
 R.T.: 5.545 min  
 Delta R.T.: 0.001 min  
 Response: 18847154  
 Conc: 50.69 ng/ml



#8 AR-1221-1  
 R.T.: 4.979 min  
 Delta R.T.: -0.007 min  
 Response: 118563  
 Conc: 6.00 ng/ml

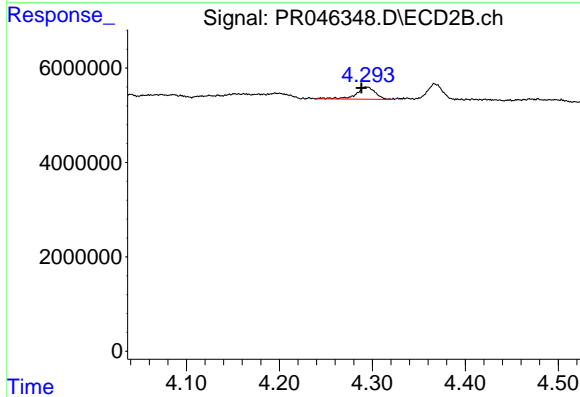


#8 AR-1221-1  
 R.T.: 0.000 min  
 Exp R.T. : 4.201 min  
 Response: 0  
 Conc: N.D.

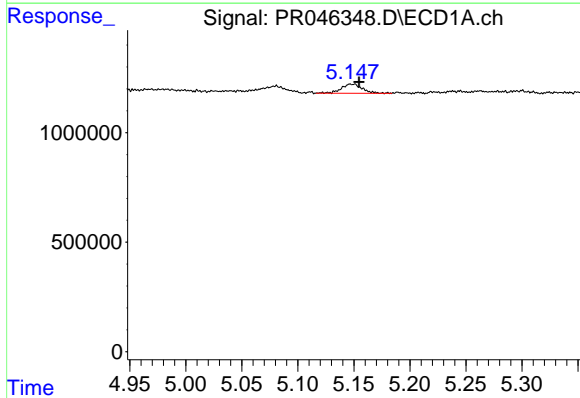


#9 AR-1221-2  
 R.T.: 5.080 min  
 Delta R.T.: 0.005 min  
 Response: 471778  
 Conc: 32.14 ng/ml

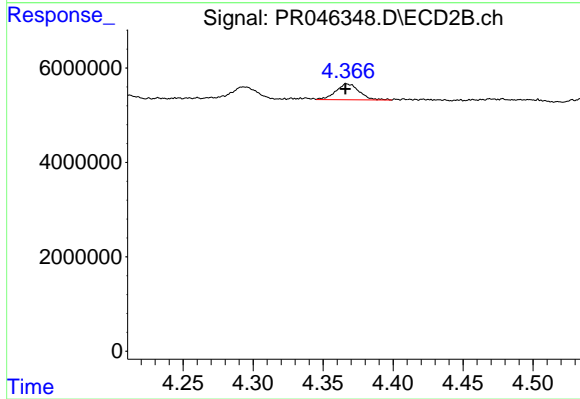
Instrument :  
 ECD\_R  
 ClientSampleId :



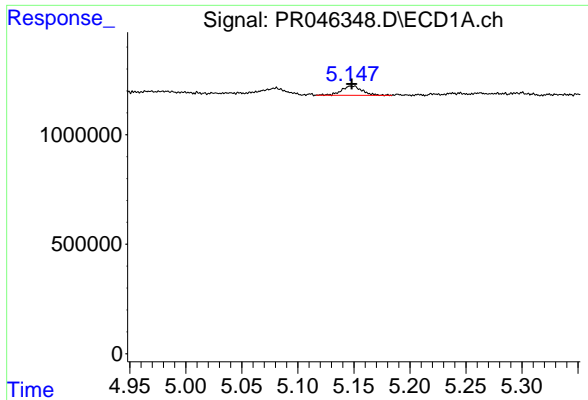
#9 AR-1221-2  
 R.T.: 4.294 min  
 Delta R.T.: 0.006 min  
 Response: 3759881  
 Conc: 39.50 ng/ml



#10 AR-1221-3  
 R.T.: 5.148 min  
 Delta R.T.: -0.007 min  
 Response: 545429  
 Conc: 11.62 ng/ml

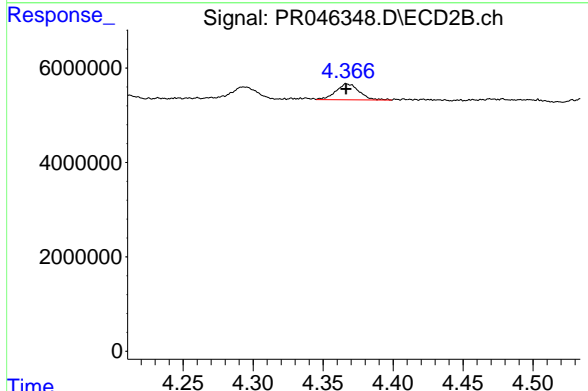


#10 AR-1221-3  
 R.T.: 4.367 min  
 Delta R.T.: 0.001 min  
 Response: 3904829  
 Conc: 12.41 ng/ml

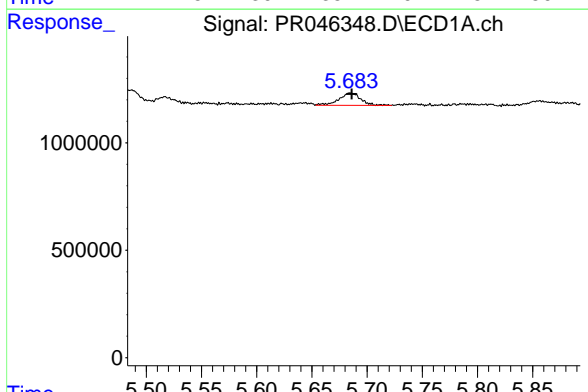


#11 AR-1232-1  
 R.T.: 5.148 min  
 Delta R.T.: 0.000 min  
 Response: 545429  
 Conc: 14.25 ng/ml

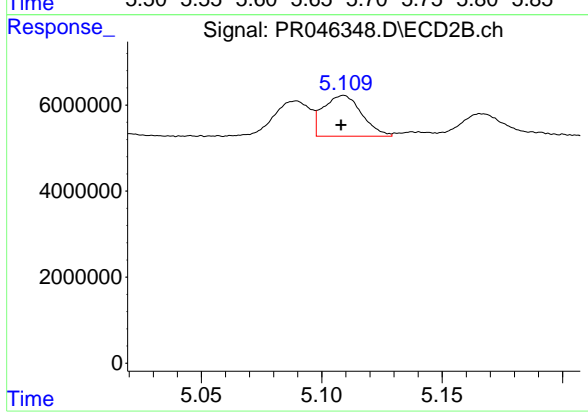
Instrument :  
 ECD\_R  
 ClientSampleId :



#11 AR-1232-1  
 R.T.: 4.367 min  
 Delta R.T.: 0.000 min  
 Response: 3904829  
 Conc: 14.52 ng/ml

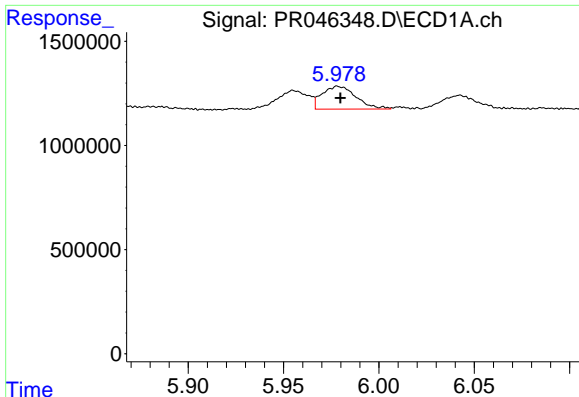


#12 AR-1232-2  
 R.T.: 5.685 min  
 Delta R.T.: -0.001 min  
 Response: 792746  
 Conc: 40.97 ng/ml



#12 AR-1232-2  
 R.T.: 5.109 min  
 Delta R.T.: 0.000 min  
 Response: 10568778  
 Conc: 37.70 ng/ml

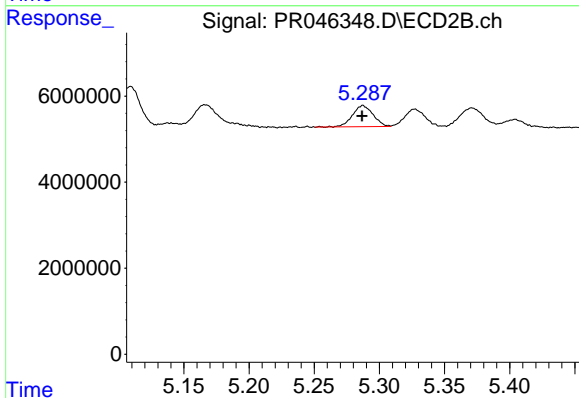




#13 AR-1232-3

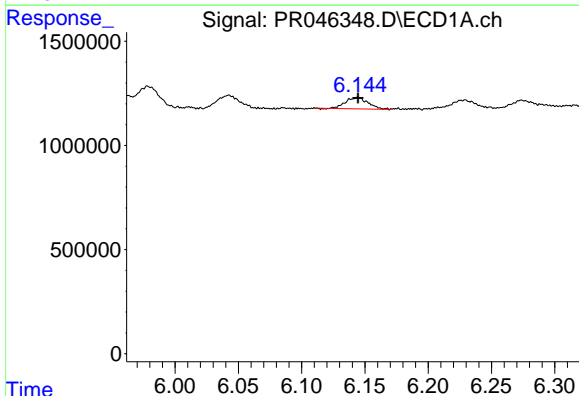
R.T.: 5.979 min  
 Delta R.T.: -0.001 min  
 Response: 1356200  
 Conc: 34.01 ng/ml

Instrument :  
 ECD\_R  
 ClientSampleId :



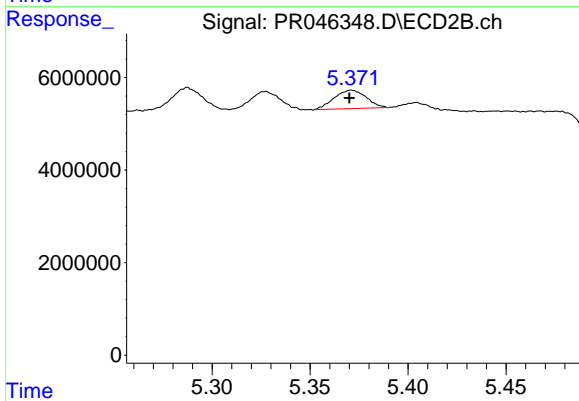
#13 AR-1232-3

R.T.: 5.287 min  
 Delta R.T.: 0.000 min  
 Response: 5485515  
 Conc: 42.24 ng/ml



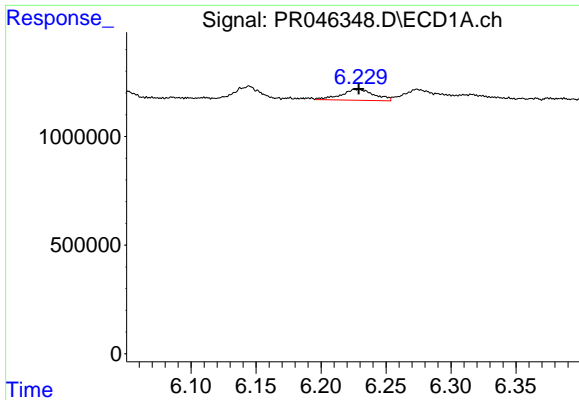
#14 AR-1232-4

R.T.: 6.145 min  
 Delta R.T.: 0.000 min  
 Response: 678510  
 Conc: 34.05 ng/ml



#14 AR-1232-4

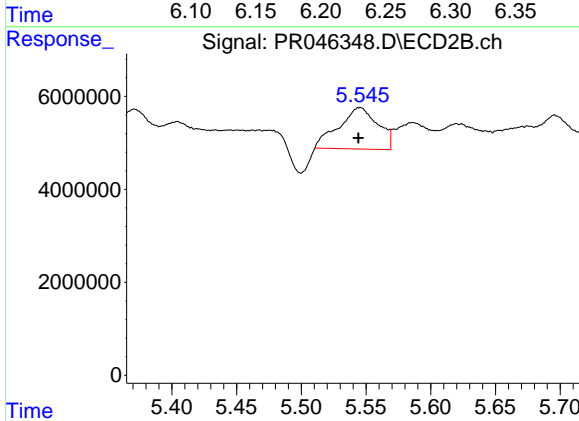
R.T.: 5.371 min  
 Delta R.T.: 0.000 min  
 Response: 4526293  
 Conc: 36.61 ng/ml



#15 AR-1232-5

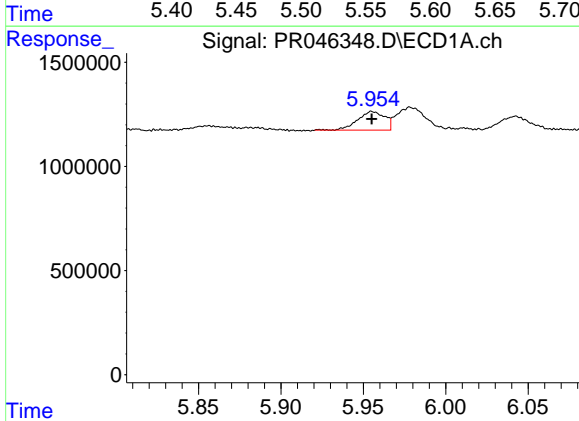
R.T.: 6.229 min  
 Delta R.T.: 0.000 min  
 Response: 895215  
 Conc: 59.36 ng/ml

Instrument :  
 ECD\_R  
 ClientSampleId :



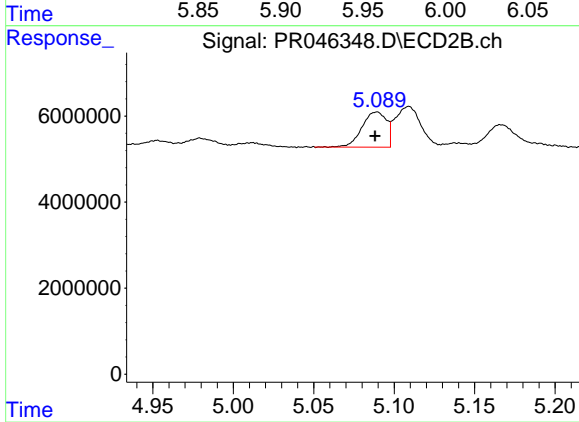
#15 AR-1232-5

R.T.: 5.545 min  
 Delta R.T.: 0.001 min  
 Response: 18847154  
 Conc: 137.25 ng/ml



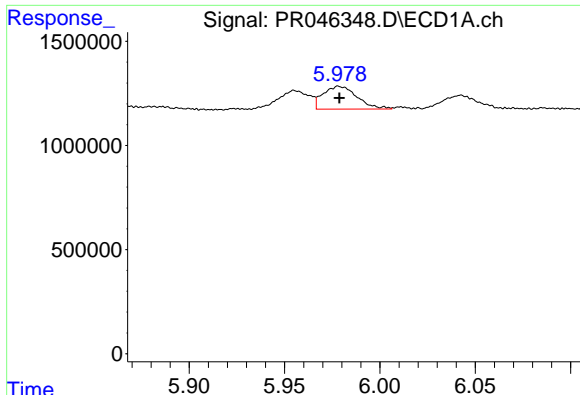
#16 AR-1242-1

R.T.: 5.956 min  
 Delta R.T.: 0.000 min  
 Response: 1026202  
 Conc: 18.98 ng/ml



#16 AR-1242-1

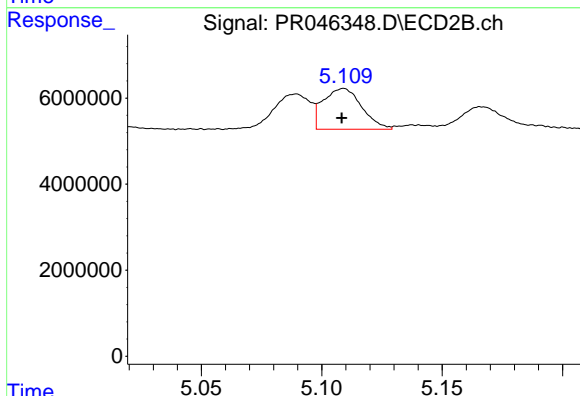
R.T.: 5.089 min  
 Delta R.T.: 0.001 min  
 Response: 8613537  
 Conc: 22.65 ng/ml



#17 AR-1242-2

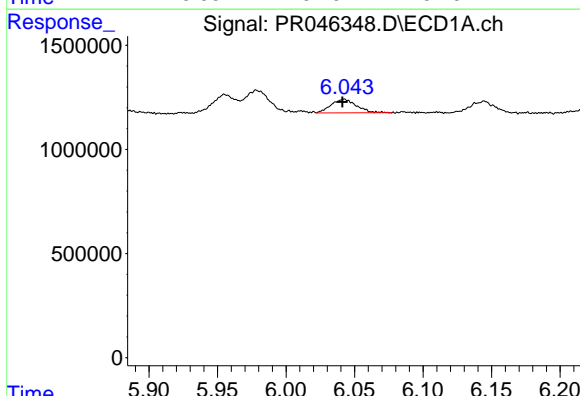
R.T.: 5.979 min  
 Delta R.T.: 0.000 min  
 Response: 1356200  
 Conc: 17.90 ng/ml

Instrument :  
 ECD\_R  
 ClientSampleId :



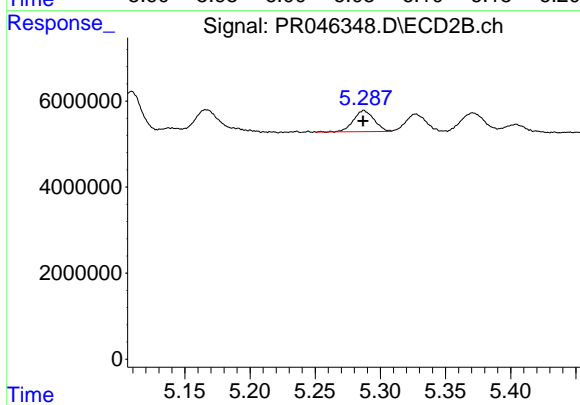
#17 AR-1242-2

R.T.: 5.109 min  
 Delta R.T.: 0.000 min  
 Response: 10568778  
 Conc: 20.18 ng/ml



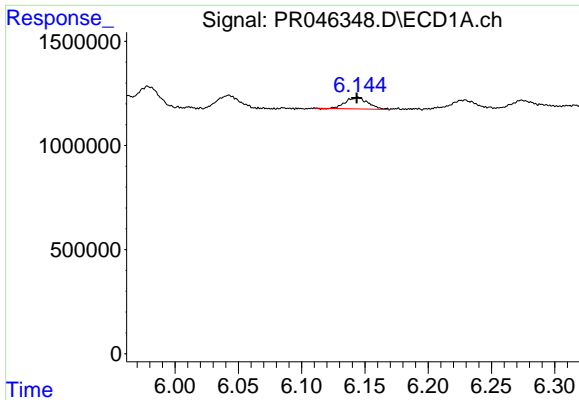
#18 AR-1242-3

R.T.: 6.042 min  
 Delta R.T.: 0.001 min  
 Response: 838227  
 Conc: 18.33 ng/ml



#18 AR-1242-3

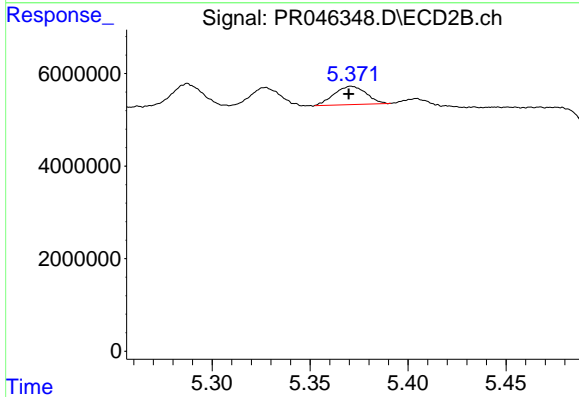
R.T.: 5.287 min  
 Delta R.T.: 0.000 min  
 Response: 5485515  
 Conc: 21.50 ng/ml



#19 AR-1242-4

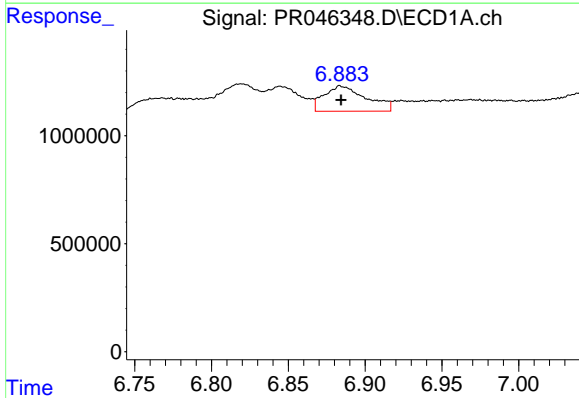
R.T.: 6.145 min  
 Delta R.T.: 0.001 min  
 Response: 678510  
 Conc: 17.75 ng/ml

Instrument :  
 ECD\_R  
 ClientSampleId :



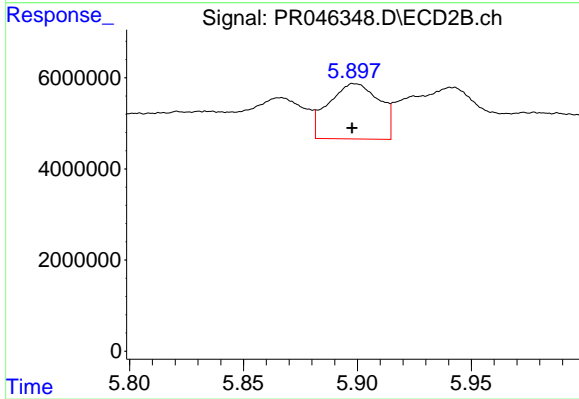
#19 AR-1242-4

R.T.: 5.371 min  
 Delta R.T.: 0.001 min  
 Response: 4526293  
 Conc: 17.40 ng/ml



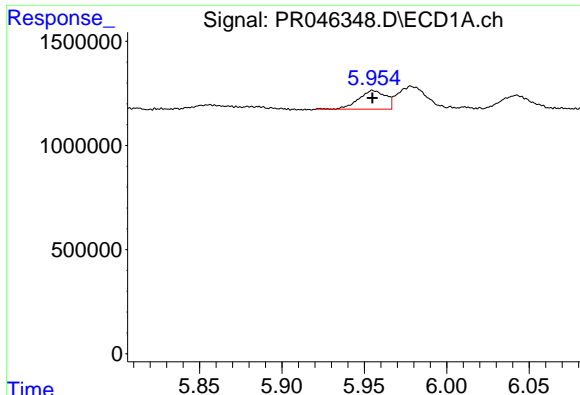
#20 AR-1242-5

R.T.: 6.884 min  
 Delta R.T.: 0.000 min  
 Response: 2237061  
 Conc: 50.56 ng/ml



#20 AR-1242-5

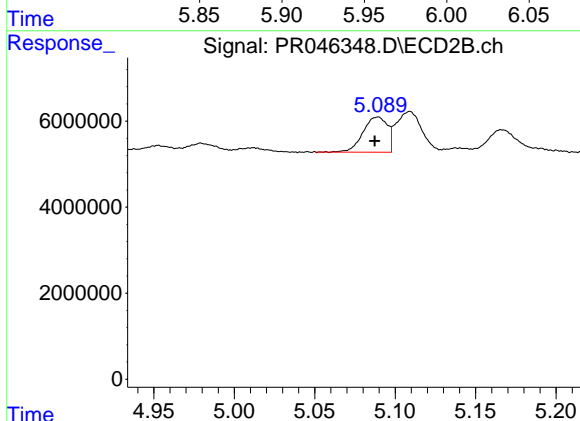
R.T.: 5.899 min  
 Delta R.T.: 0.001 min  
 Response: 18860223  
 Conc: 51.09 ng/ml



#21 AR-1248-1

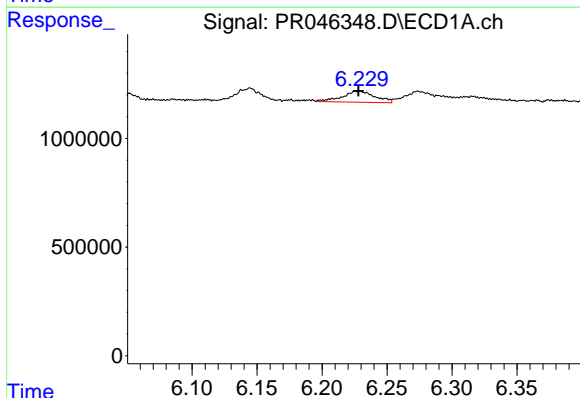
R.T.: 5.956 min  
 Delta R.T.: 0.000 min  
 Response: 1026202  
 Conc: 25.47 ng/ml

Instrument :  
 ECD\_R  
 ClientSampleId :



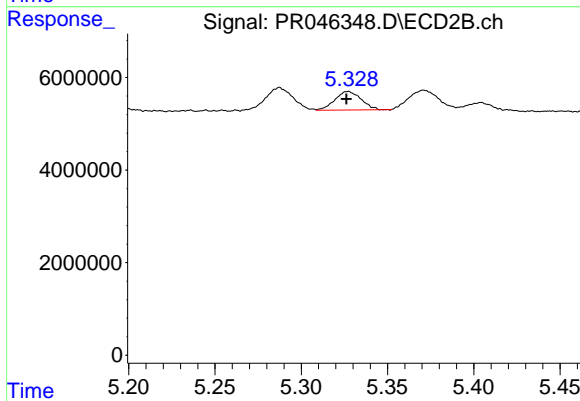
#21 AR-1248-1

R.T.: 5.089 min  
 Delta R.T.: 0.002 min  
 Response: 8613537  
 Conc: 29.87 ng/ml



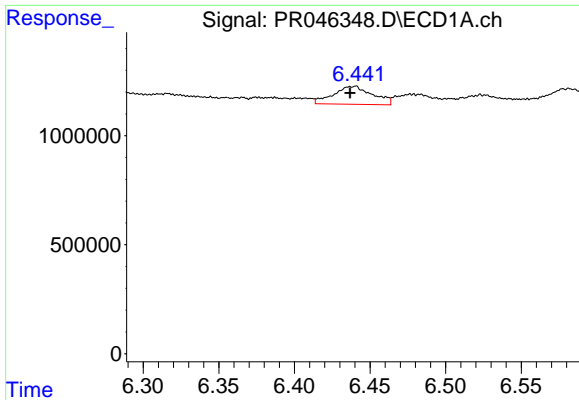
#22 AR-1248-2

R.T.: 6.229 min  
 Delta R.T.: 0.000 min  
 Response: 895215  
 Conc: 16.41 ng/ml



#22 AR-1248-2

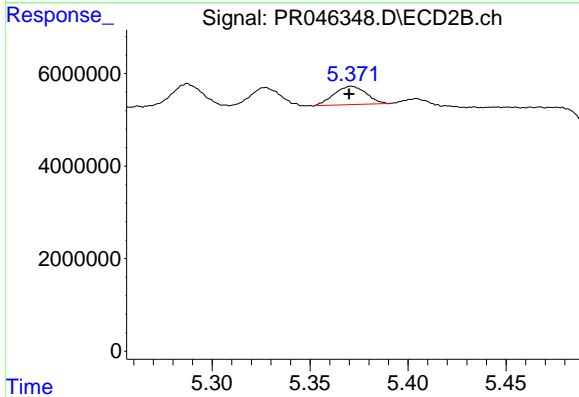
R.T.: 5.327 min  
 Delta R.T.: 0.000 min  
 Response: 4241070  
 Conc: 12.02 ng/ml



#23 AR-1248-3

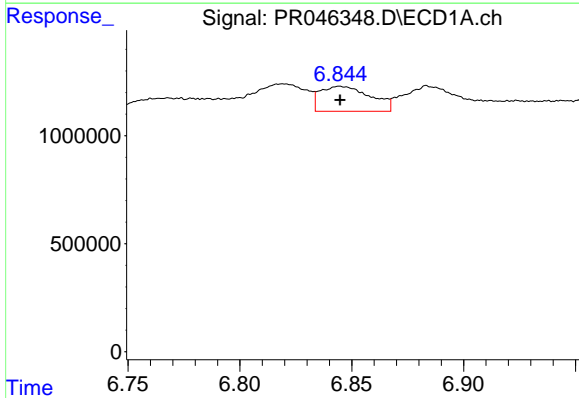
R.T.: 6.440 min  
 Delta R.T.: 0.003 min  
 Response: 1495968  
 Conc: 24.10 ng/ml

Instrument :  
 ECD\_R  
 ClientSampleId :



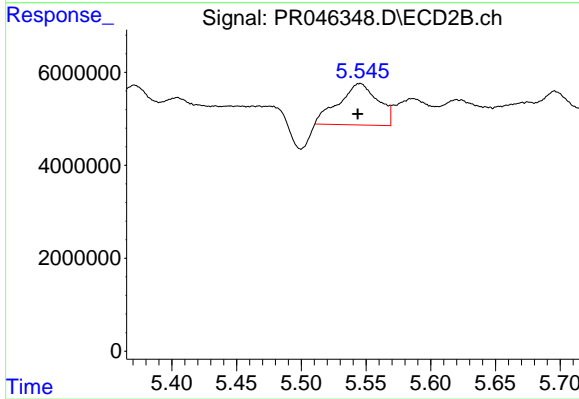
#23 AR-1248-3

R.T.: 5.371 min  
 Delta R.T.: 0.001 min  
 Response: 4526293  
 Conc: 12.09 ng/ml



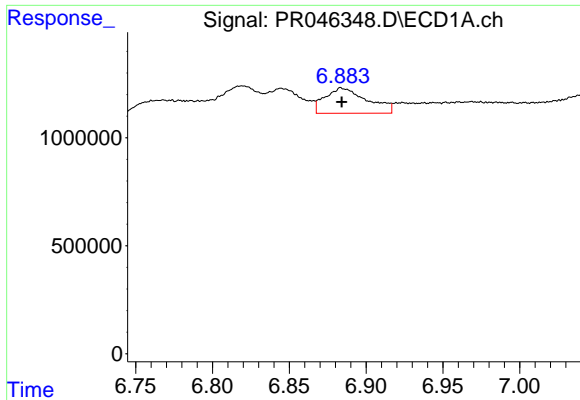
#24 AR-1248-4

R.T.: 6.845 min  
 Delta R.T.: 0.000 min  
 Response: 1805892  
 Conc: 24.51 ng/ml



#24 AR-1248-4

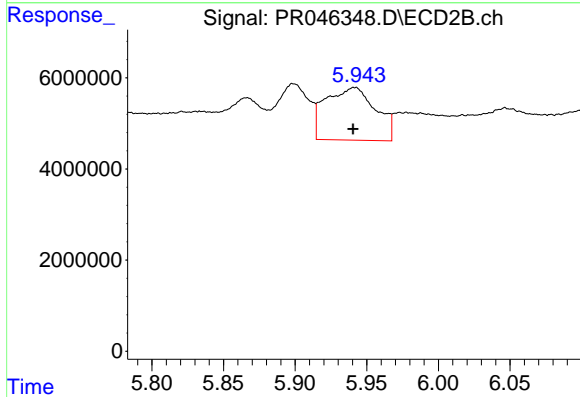
R.T.: 5.545 min  
 Delta R.T.: 0.002 min  
 Response: 18847154  
 Conc: 40.15 ng/ml



#25 AR-1248-5

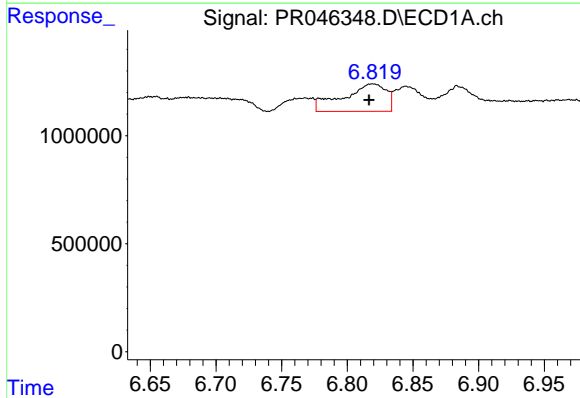
R.T.: 6.884 min  
 Delta R.T.: 0.000 min  
 Response: 2237061  
 Conc: 31.85 ng/ml

Instrument :  
 ECD\_R  
 ClientSampleId :



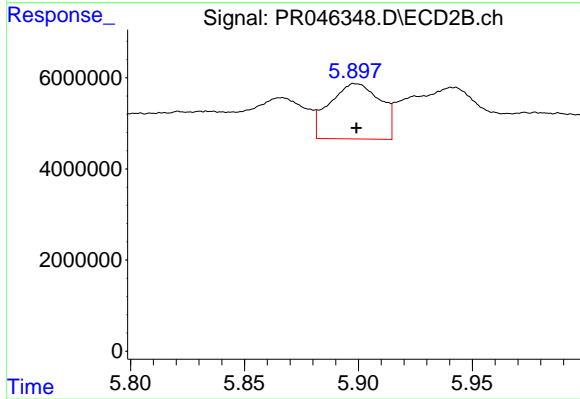
#25 AR-1248-5

R.T.: 5.942 min  
 Delta R.T.: 0.001 min  
 Response: 28088819  
 Conc: 58.02 ng/ml



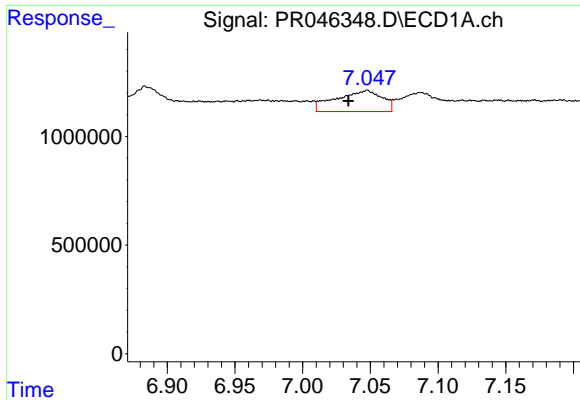
#26 AR-1254-1

R.T.: 6.819 min  
 Delta R.T.: 0.003 min  
 Response: 2918668  
 Conc: 37.80 ng/ml



#26 AR-1254-1

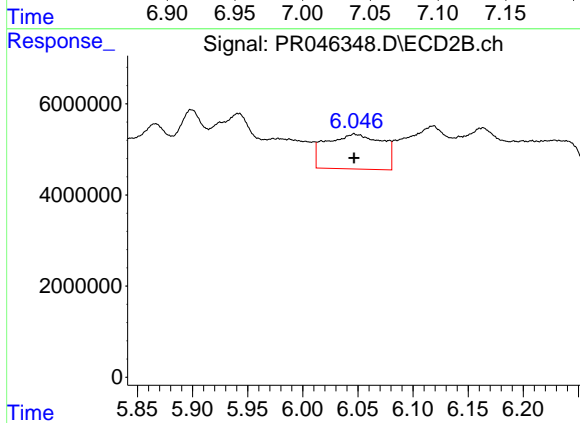
R.T.: 5.899 min  
 Delta R.T.: 0.000 min  
 Response: 18860223  
 Conc: 23.95 ng/ml



#27 AR-1254-2

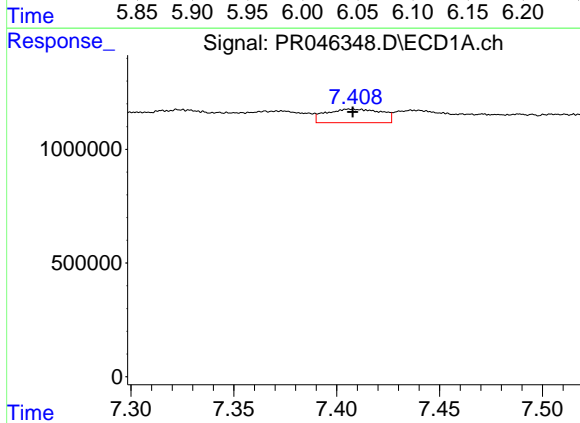
R.T.: 7.048 min  
 Delta R.T.: 0.014 min  
 Response: 2303033  
 Conc: 18.84 ng/ml

Instrument :  
 ECD\_R  
 ClientSampleId :



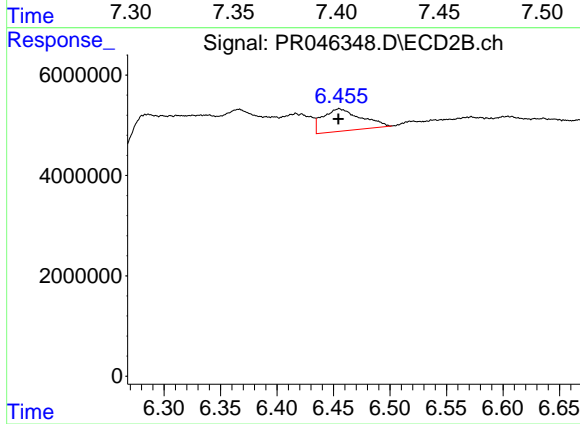
#27 AR-1254-2

R.T.: 6.047 min  
 Delta R.T.: 0.000 min  
 Response: 27024276  
 Conc: 39.30 ng/ml



#28 AR-1254-3

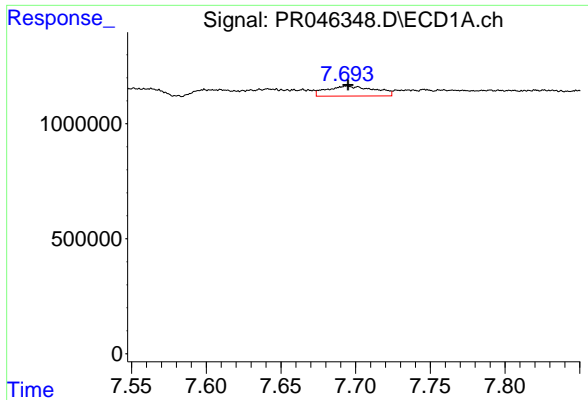
R.T.: 7.406 min  
 Delta R.T.: -0.001 min  
 Response: 1119788  
 Conc: 8.35 ng/ml



#28 AR-1254-3

R.T.: 6.455 min  
 Delta R.T.: 0.000 min  
 Response: 10393516  
 Conc: 8.75 ng/ml

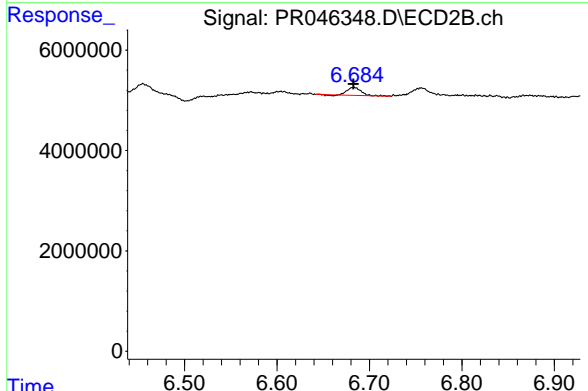




#29 AR-1254-4

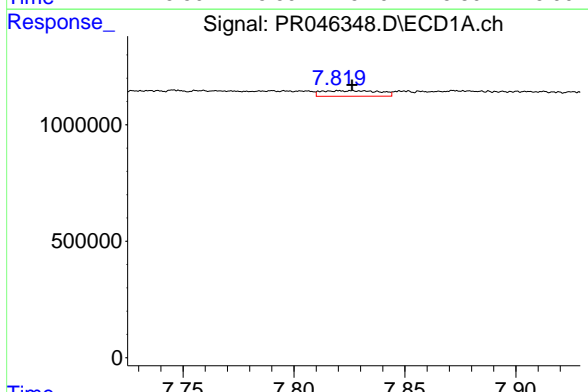
R.T.: 7.694 min  
 Delta R.T.: 0.000 min  
 Response: 970889  
 Conc: 9.46 ng/ml

Instrument :  
 ECD\_R  
 ClientSampleId :



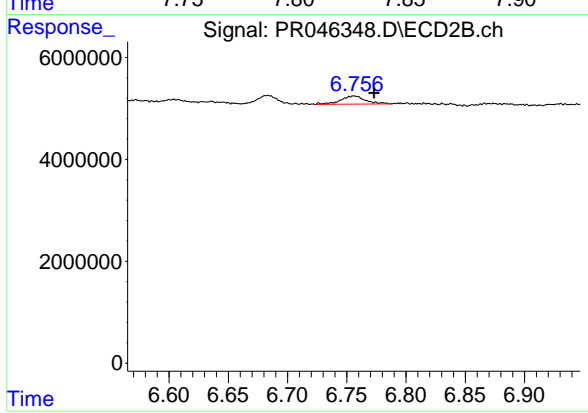
#29 AR-1254-4

R.T.: 6.683 min  
 Delta R.T.: 0.000 min  
 Response: 1636471  
 Conc: 2.12 ng/ml



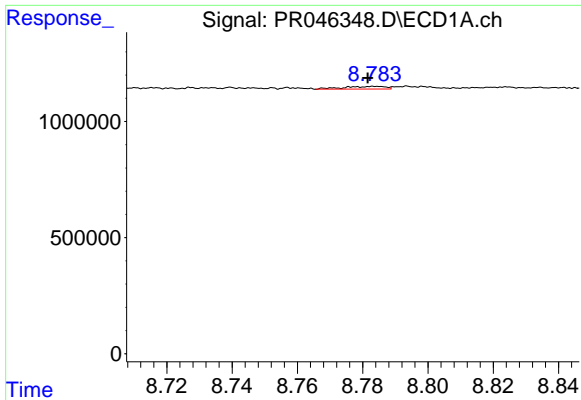
#32 AR-1260-2

R.T.: 7.826 min  
 Delta R.T.: 0.000 min  
 Response: 429747  
 Conc: 3.74 ng/ml



#32 AR-1260-2

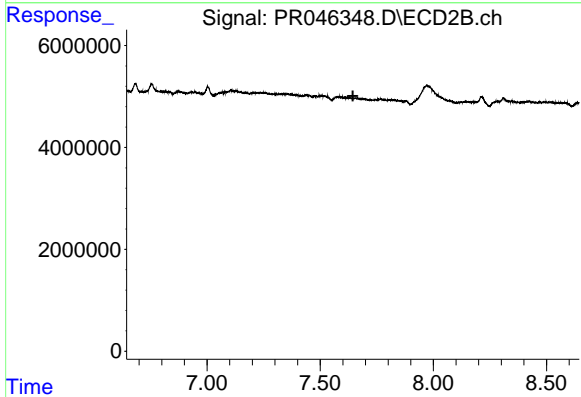
R.T.: 6.756 min  
 Delta R.T.: -0.017 min  
 Response: 2327063  
 Conc: 2.63 ng/ml



#35 AR-1260-5

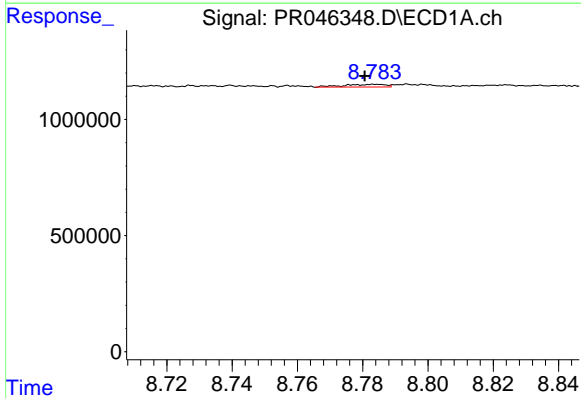
R.T.: 8.784 min  
 Delta R.T.: 0.002 min  
 Response: 99351  
 Conc: 0.46 ng/ml

Instrument :  
 ECD\_R  
 ClientSampleId :



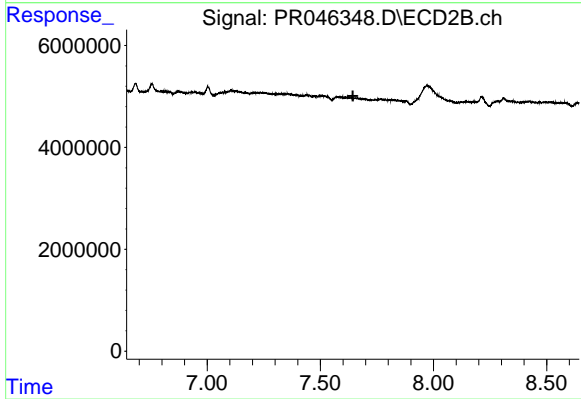
#35 AR-1260-5

R.T.: 0.000 min  
 Exp R.T. : 7.644 min  
 Response: 0  
 Conc: N.D.



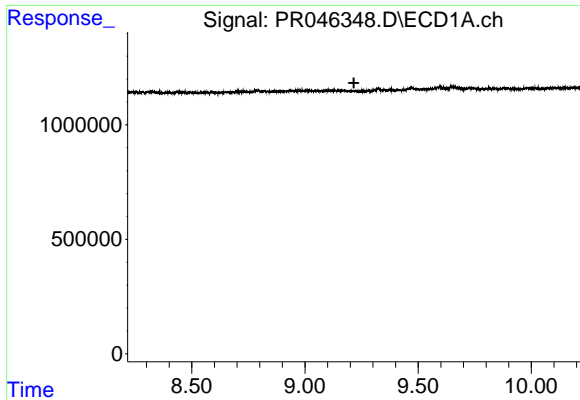
#37 AR-1262-2

R.T.: 8.784 min  
 Delta R.T.: 0.003 min  
 Response: 99351  
 Conc: 0.44 ng/ml



#37 AR-1262-2

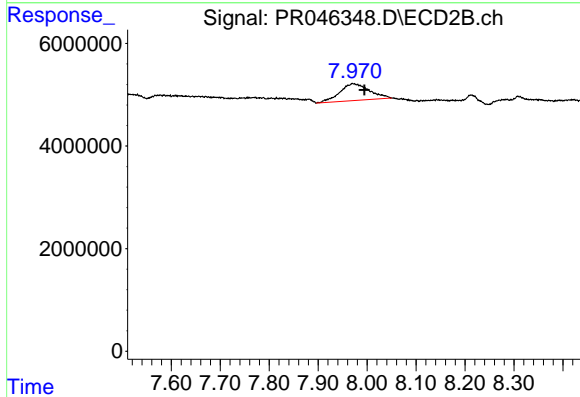
R.T.: 0.000 min  
 Exp R.T. : 7.644 min  
 Response: 0  
 Conc: N.D.



#39 AR-1262-4

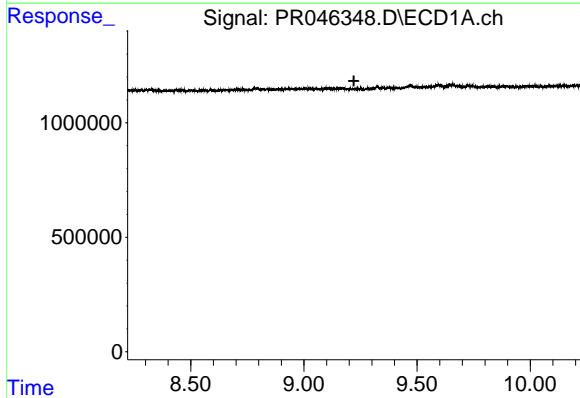
R.T.: 0.000 min  
 Exp R.T. : 9.216 min  
 Response: 0  
 Conc: N.D.

Instrument :  
 ECD\_R  
 ClientSampleId :



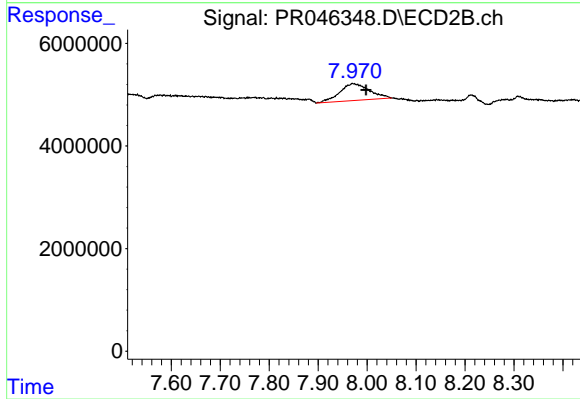
#39 AR-1262-4

R.T.: 7.971 min  
 Delta R.T.: -0.024 min  
 Response: 13972063  
 Conc: 9.85 ng/ml



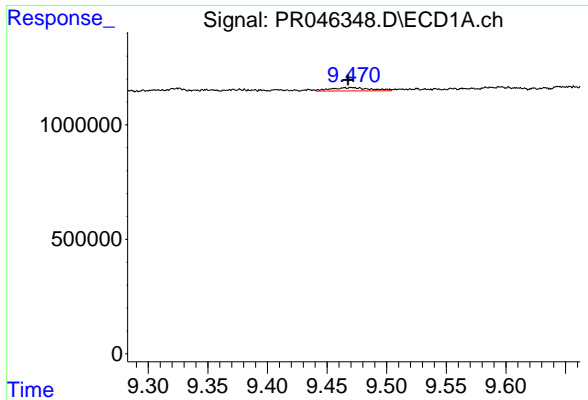
#42 AR-1268-2

R.T.: 0.000 min  
 Exp R.T. : 9.221 min  
 Response: 0  
 Conc: N.D.



#42 AR-1268-2

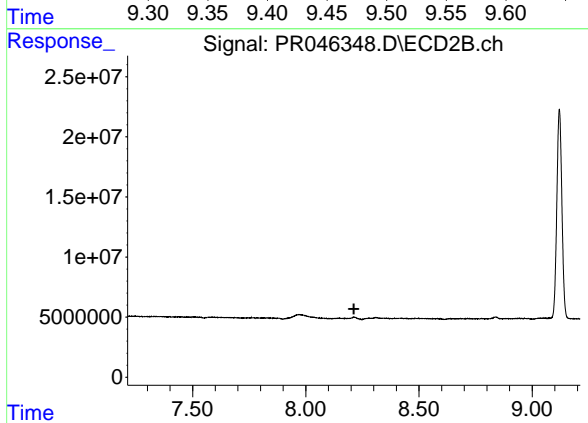
R.T.: 7.971 min  
 Delta R.T.: -0.027 min  
 Response: 13972063  
 Conc: 6.21 ng/ml



#43 AR-1268-3

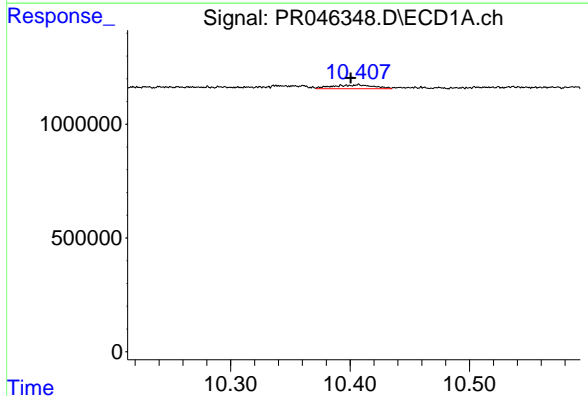
R.T.: 9.471 min  
 Delta R.T.: 0.004 min  
 Response: 339244  
 Conc: 1.55 ng/ml

Instrument :  
 ECD\_R  
 ClientSampled :



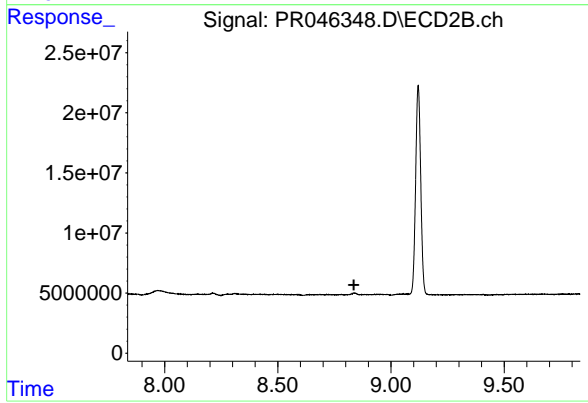
#43 AR-1268-3

R.T.: 0.000 min  
 Exp R.T. : 8.212 min  
 Response: 0  
 Conc: N.D.



#45 AR-1268-5

R.T.: 10.407 min  
 Delta R.T.: 0.007 min  
 Response: 410234  
 Conc: 0.58 ng/ml



#45 AR-1268-5

R.T.: 0.000 min  
 Exp R.T. : 8.836 min  
 Response: 0  
 Conc: N.D.