

Data Path : Z:\pestpcbsrv\HPCHEM1\ECD\_R\Data\PR072218\  
 Data File : PR030542.D  
 Signal(s) : Signal #1: ECD1A.ch Signal #2: ECD2B.ch  
 Acq On : 21 Jul 2018 19:37  
 Operator : SM\MA  
 Sample : J4062-37RE  
 Misc :  
 ALS Vial : 32 Sample Multiplier: 1

Instrument :  
 ECD\_R  
 ClientSampleId :  
 TP-10RE

Integration File signal 1: autoint1.e  
 Integration File signal 2: autoint2.e  
 Quant Time: Jul 22 23:59:50 2018  
 Quant Method : \\TERASTORAGE\Terastorage\pestpcbsrv\HPCHEM1\ECD\_R\Method\PR072218.M  
 Quant Title : GC EXTRACTABLES  
 QLast Update : Sun Jul 22 23:34:46 2018  
 Response via : Initial Calibration  
 Integrator: ChemStation

Volume Inj. : 2 µl  
 Signal #1 Phase : ZB-MR1 Signal #2 Phase: ZB-MR2  
 Signal #1 Info : 30Mx0.32mmx 0.50µ Signal #2 Info : 30M x 0.32mm x 0.25µm

Compound	RT#1	RT#2	Resp#1	Resp#2	ng/ml	ng/ml
-----						
System Monitoring Compounds						
1) SA Tetrachlo...	4.552	3.690	447.6E6	692.7E6	13.353	13.752
2) SA Decachlor...	10.318	8.599	299.6E6	208.1E6	7.720	8.696

Target Compounds

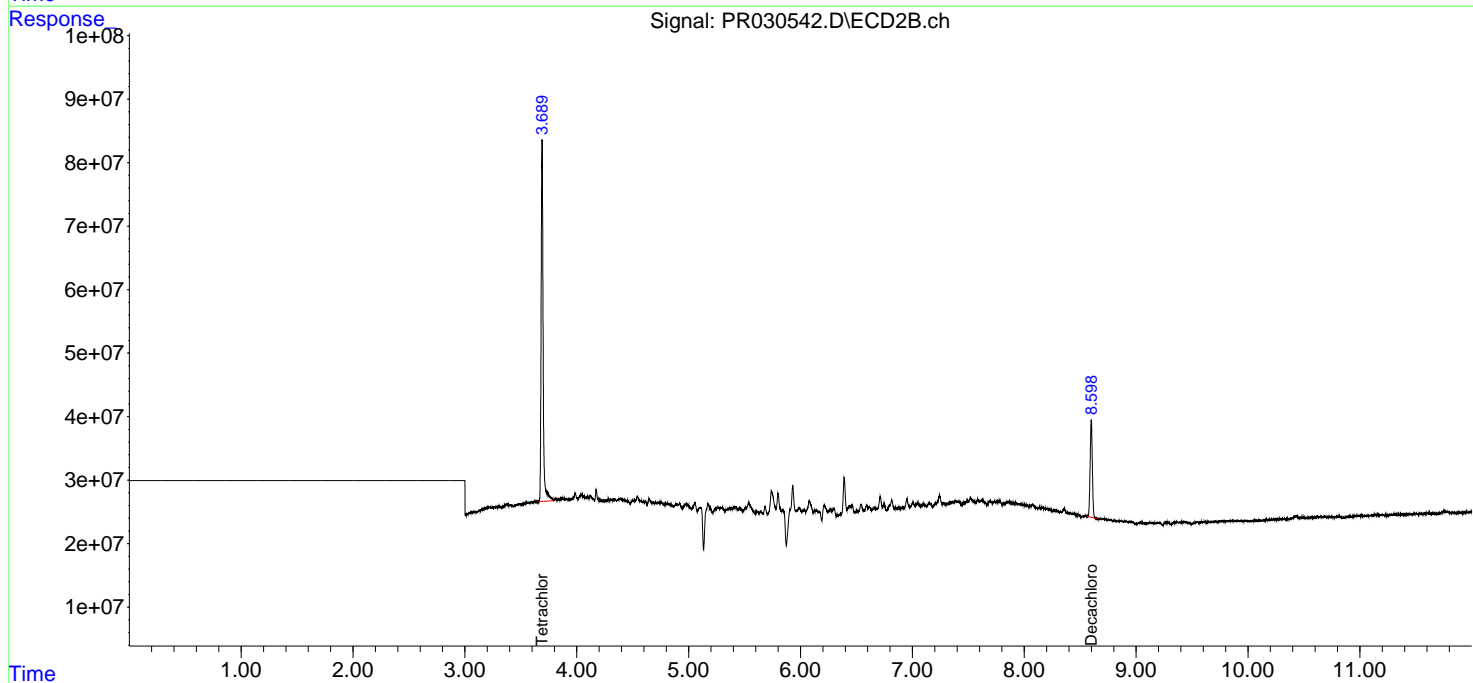
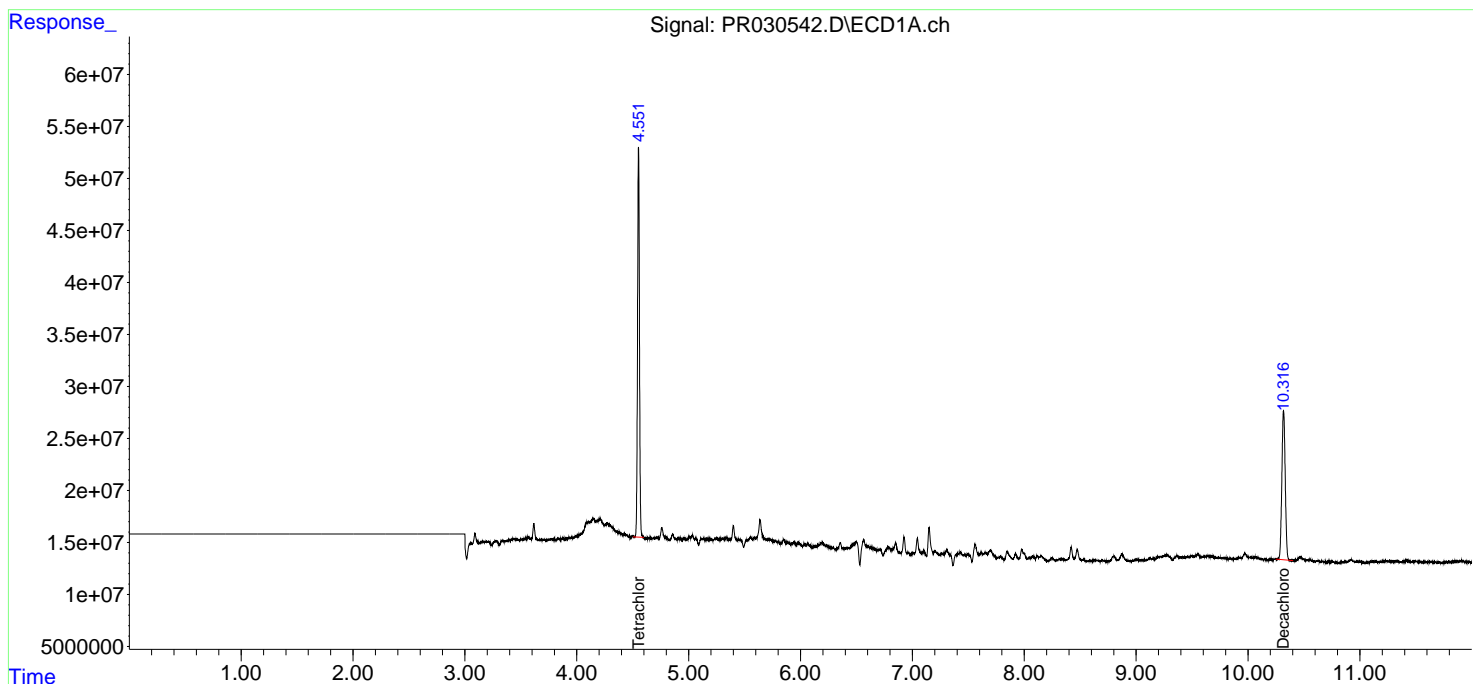
(f)=RT Delta > 1/2 Window (#)=Amounts differ by > 25% (m)=manual int.

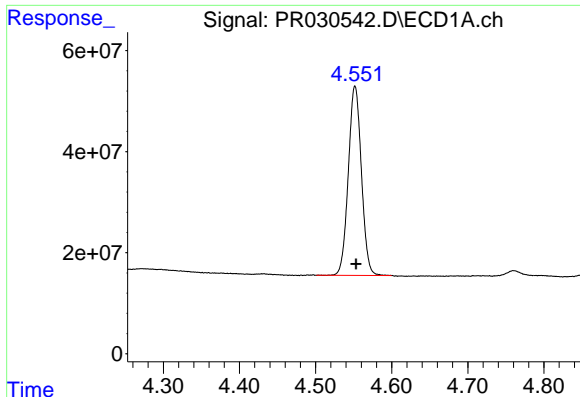
Data Path : Z:\pestpcbsrv\HPCHEM1\ECD\_R\Data\PR072218\  
 Data File : PR030542.D  
 Signal(s) : Signal #1: ECD1A.ch Signal #2: ECD2B.ch  
 Acq On : 21 Jul 2018 19:37  
 Operator : SM\MA  
 Sample : J4062-37RE  
 Misc :  
 ALS Vial : 32 Sample Multiplier: 1

Instrument :  
 ECD\_R  
 ClientSampleId :  
 TP-10RE

Integration File signal 1: autoint1.e  
 Integration File signal 2: autoint2.e  
 Quant Time: Jul 22 23:59:50 2018  
 Quant Method : \\TERASTORAGE\Terastorage\pestpcbsrv\HPCHEM1\ECD\_R\Method\PR072218.M  
 Quant Title : GC EXTRACTABLES  
 QLast Update : Sun Jul 22 23:34:46 2018  
 Response via : Initial Calibration  
 Integrator: ChemStation

Volume Inj. : 2 µl  
 Signal #1 Phase : ZB-MR1 Signal #2 Phase: ZB-MR2  
 Signal #1 Info : 30Mx0.32mmx 0.50µ Signal #2 Info : 30M x 0.32mm x 0.25µm

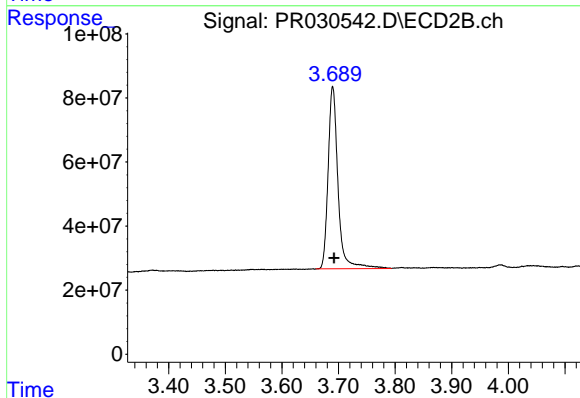




#1 Tetrachloro-m-xylene

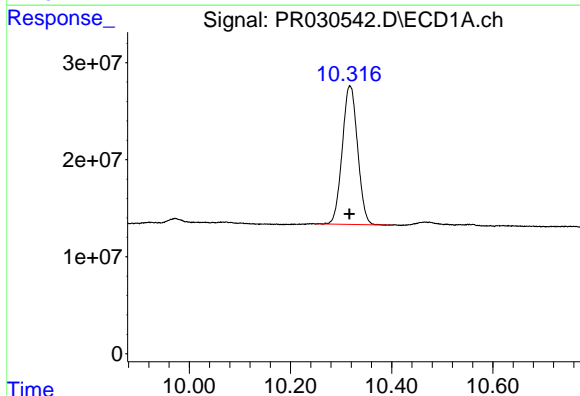
R.T.: 4.552 min  
Delta R.T.: -0.001 min  
Response: 447595053  
Conc: 13.35 ng/ml

Instrument :  
ECD\_R  
ClientSampleId :  
TP-10RE



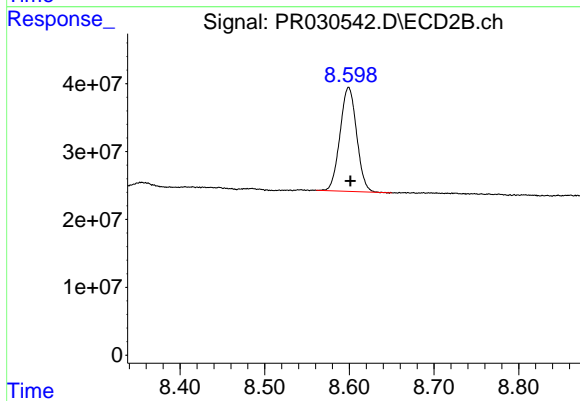
#1 Tetrachloro-m-xylene

R.T.: 3.690 min  
Delta R.T.: -0.003 min  
Response: 692659759  
Conc: 13.75 ng/ml



#2 Decachlorobiphenyl

R.T.: 10.318 min  
Delta R.T.: 0.001 min  
Response: 299556492  
Conc: 7.72 ng/ml



#2 Decachlorobiphenyl

R.T.: 8.599 min  
Delta R.T.: -0.002 min  
Response: 208057681  
Conc: 8.70 ng/ml