

Data Path : Z:\pestpcbsrv\HPCHEM1\ECD_R\Data\PR072318\
 Data File : PR030574.D
 Signal(s) : Signal #1: ECD1A.ch Signal #2: ECD2B.ch
 Acq On : 23 Jul 2018 18:30
 Operator : SM\MA
 Sample : J4066-01
 Misc :
 ALS Vial : 14 Sample Multiplier: 1

Instrument :
 ECD_R
 ClientSampled :

Integration File signal 1: autoint1.e
 Integration File signal 2: autoint2.e
 Quant Time: Jul 24 01:52:57 2018
 Quant Method : Z:\pestpcbsrv\HPCHEM1\ECD_R\Method\PR072218.M
 Quant Title : GC EXTRACTABLES
 QLast Update : Sun Jul 22 23:34:46 2018
 Response via : Initial Calibration
 Integrator: ChemStation

Volume Inj. : 2 µl
 Signal #1 Phase : ZB-MR1 Signal #2 Phase: ZB-MR2
 Signal #1 Info : 30Mx0.32mmx 0.50µ Signal #2 Info : 30M x 0.32mm x 0.25µm

Compound	RT#1	RT#2	Resp#1	Resp#2	ng/ml	ng/ml
System Monitoring Compounds						
1) SA Tetrachlo...	4.555	3.695	206.4E6	327.9E6	6.157	6.509
2) SA Decachlor...	10.315	8.597	207.5E6	138.1E6	5.349	5.772
Target Compounds						
3) L1 AR-1016-1	0.000	4.545	0	1427352	N.D.	1.036 #
4) L1 AR-1016-2	0.000	4.908	0	1518885	N.D.	1.008 #
5) L1 AR-1016-3	0.000	4.994	0	5796928	N.D.	3.861 #
6) L1 AR-1016-4	6.200	5.172	130.7E6	16215525	147.672	9.705 #
7) L1 AR-1016-5	6.277	5.507	215.3E6	64300134	219.873	35.998 #
8) L2 AR-1221-1	4.761	0.000	14637572	0	30.652	N.D. #
9) L2 AR-1221-2	0.000	3.984	0	26956667	N.D.	52.841 #
10) L2 AR-1221-3	0.000	4.036	0	6687520	N.D.	4.013 #
11) L3 AR-1232-1	0.000	4.036	0	6687520	N.D.	6.781 #
12) L3 AR-1232-2	0.000	4.908	0	1518885	N.D.	2.457 #
13) L3 AR-1232-3	0.000	4.987	0	1943306	N.D.	4.335 #
14) L3 AR-1232-4	0.000	5.507	0	64300134	N.D.	80.367 #
15) L3 AR-1232-5	6.277	5.579	215.3E6	81226950	555.413	112.165 #
16) L4 AR-1242-1	0.000	4.545	0	1427352	N.D.	1.217 #
17) L4 AR-1242-2	0.000	4.795	0	2030703	N.D.	0.751 #
18) L4 AR-1242-3	0.000	4.862	0	708172	N.D.	0.442 #
19) L4 AR-1242-4	0.000	4.994	0	5796928	N.D.	4.584 #
20) L4 AR-1242-5	6.200	5.172	130.7E6	16215525	179.110	11.389 #
21) L5 AR-1248-1	6.021	4.987	15045241	1943306	14.601	1.127 #
22) L5 AR-1248-2	6.200	4.994	130.7E6	5796928	112.347	3.239 #
23) L5 AR-1248-3	6.494	5.172	20350030	16215525	19.704	7.260 #
24) L5 AR-1248-4	0.000	5.507	0	64300134	N.D.	18.994 #
25) L5 AR-1248-5	0.000	5.579	0	81226950	N.D.	33.534 #
26) L6 AR-1254-1	6.021	4.987	15045241	1943306	22.595	1.614 #
27) L6 AR-1254-2	0.000	5.683	0	8466293	N.D.	2.858 #
28) L6 AR-1254-3	7.149	6.068	21848117	5762719	10.190	1.175 #
29) L6 AR-1254-4	0.000	6.317	0	2584367	N.D.	0.676 #
30) L6 AR-1254-5	7.903	6.711	8259714	1432869	4.558	0.370 #
31) L7 AR-1260-1	7.327	6.225	15791932	4262091	8.953	1.192 #
32) L7 AR-1260-2	7.582	6.389	11831033	25096804	4.732	5.456
33) L7 AR-1260-3	7.903	6.734	8259714	13132048	4.114	3.759
34) L7 AR-1260-4	0.000	7.014	0	4276996	N.D.	1.722 #
35) L7 AR-1260-5	8.469	7.243	59430346	7180524	13.361	1.337 #
36) L8 AR-1262-1	7.327	6.225	15791932	4262091	10.743	1.455 #
37) L8 AR-1262-2	7.582	6.389	11831033	25096804	5.964	7.226
38) L8 AR-1262-3	7.903	6.734	8259714	13132048	2.895	2.920
39) L8 AR-1262-4	0.000	7.014	0	4276996	N.D.	1.366 #
40) L8 AR-1262-5	8.469	7.243	59430346	7180524	11.767	1.251 #
41) L9 AR-1268-1	0.000	7.526	0	14553381	N.D.	3.107 #

Data Path : Z:\pestpcbsrv\HPCHEM1\ECD_R\Data\PR072318\
 Data File : PR030574.D
 Signal(s) : Signal #1: ECD1A.ch Signal #2: ECD2B.ch
 Acq On : 23 Jul 2018 18:30
 Operator : SM\MA
 Sample : J4066-01
 Misc :
 ALS Vial : 14 Sample Multiplier: 1

Instrument :
 ECD_R
 ClientSampleId :

Integration File signal 1: autoint1.e
 Integration File signal 2: autoint2.e
 Quant Time: Jul 24 01:52:57 2018
 Quant Method : Z:\pestpcbsrv\HPCHEM1\ECD_R\Method\PR072218.M
 Quant Title : GC EXTRACTABLES
 QLast Update : Sun Jul 22 23:34:46 2018
 Response via : Initial Calibration
 Integrator: ChemStation

Volume Inj. : 2 µl
 Signal #1 Phase : ZB-MR1 Signal #2 Phase: ZB-MR2
 Signal #1 Info : 30Mx0.32mmx 0.50µ Signal #2 Info : 30M x 0.32mm x 0.25µm

	Compound	RT#1	RT#2	Resp#1	Resp#2	ng/ml	ng/ml
42)	L9 AR-1268-2	0.000	7.526	0	14553381	N.D.	3.650 #
43)	L9 AR-1268-3	0.000	7.765	0	5665686	N.D.	1.885 #
44)	L9 AR-1268-4	0.000	8.094	0	2037804	N.D.	1.597 #
45)	L9 AR-1268-5	0.000	8.355	0	3732191	N.D.	0.524 #

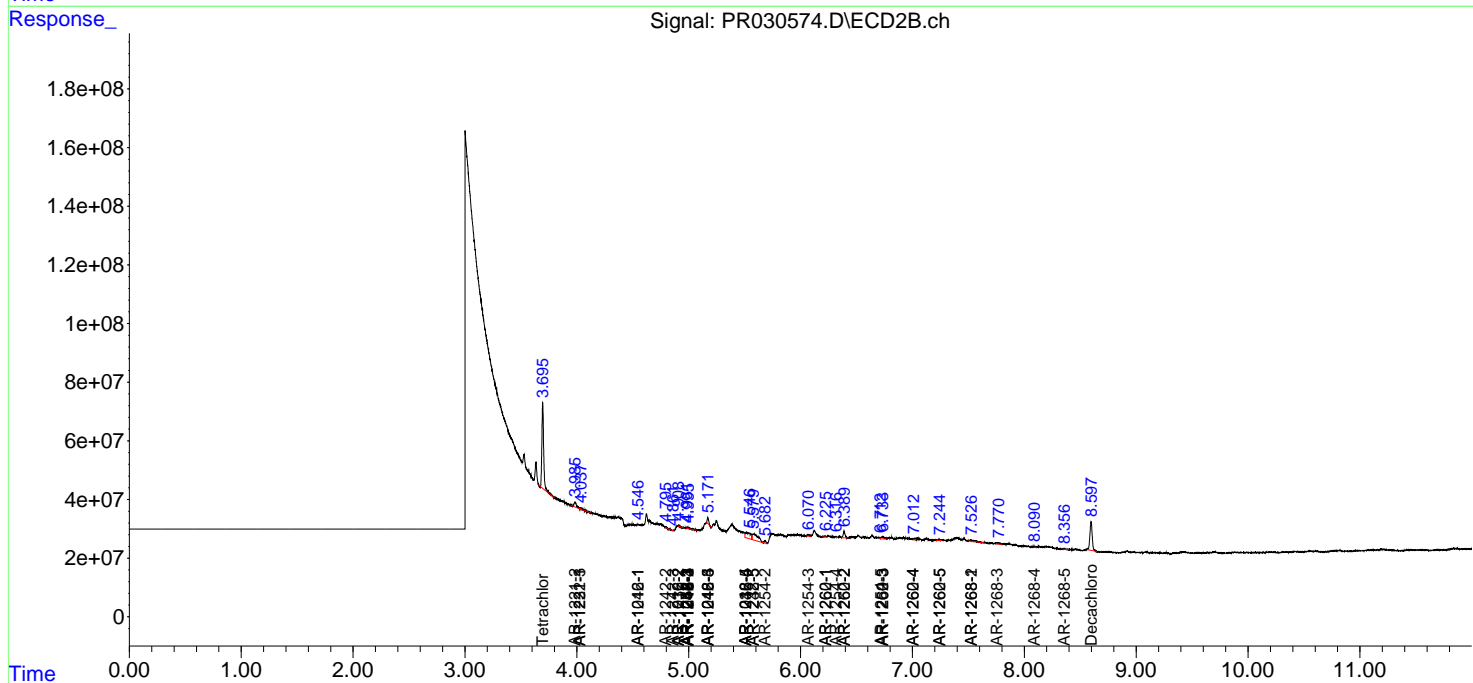
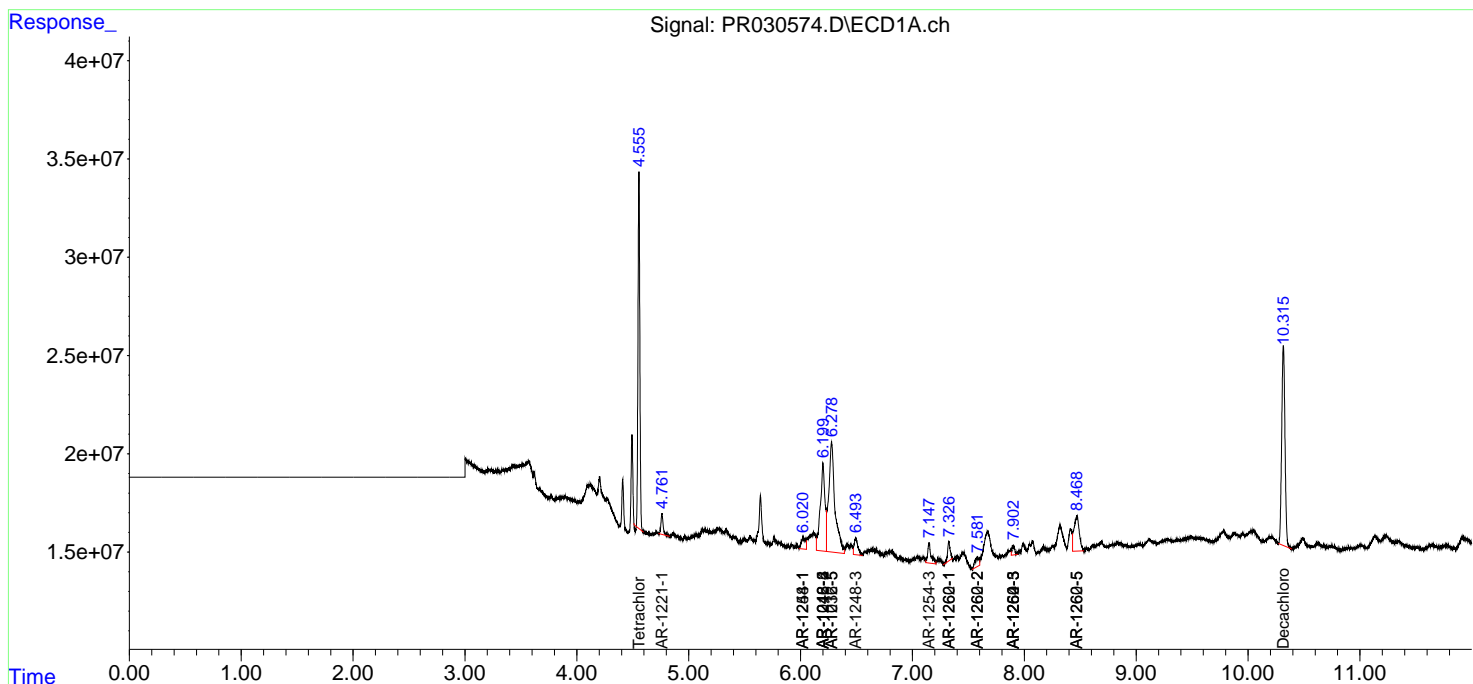
(f)=RT Delta > 1/2 Window (#)=Amounts differ by > 25% (m)=manual int.

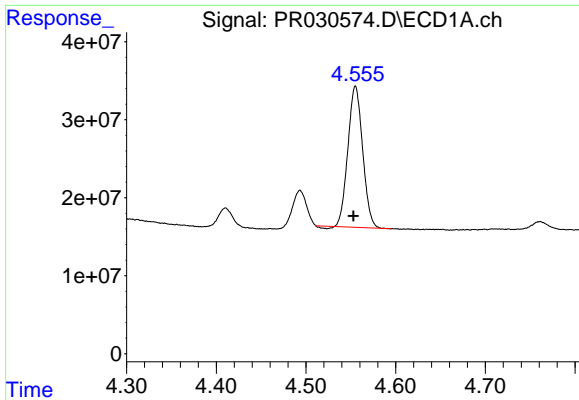
Data Path : Z:\pestpcbsrv\HPCHEM1\ECD_R\Data\PR072318\
 Data File : PR030574.D
 Signal(s) : Signal #1: ECD1A.ch Signal #2: ECD2B.ch
 Acq On : 23 Jul 2018 18:30
 Operator : SM\MA
 Sample : J4066-01
 Misc :
 ALS Vial : 14 Sample Multiplier: 1

Instrument :
 ECD_R
 ClientSampled :

Integration File signal 1: autoint1.e
 Integration File signal 2: autoint2.e
 Quant Time: Jul 24 01:52:57 2018
 Quant Method : Z:\pestpcbsrv\HPCHEM1\ECD_R\Method\PR072218.M
 Quant Title : GC EXTRACTABLES
 QLast Update : Sun Jul 22 23:34:46 2018
 Response via : Initial Calibration
 Integrator: ChemStation

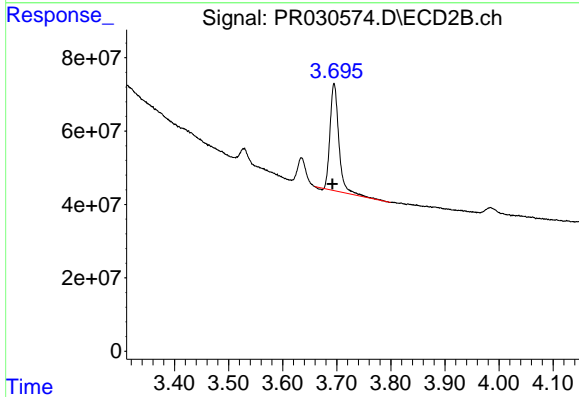
Volume Inj. : 2 µl
 Signal #1 Phase : ZB-MR1 Signal #2 Phase: ZB-MR2
 Signal #1 Info : 30Mx0.32mmx 0.50µ Signal #2 Info : 30M x 0.32mm x 0.25µm



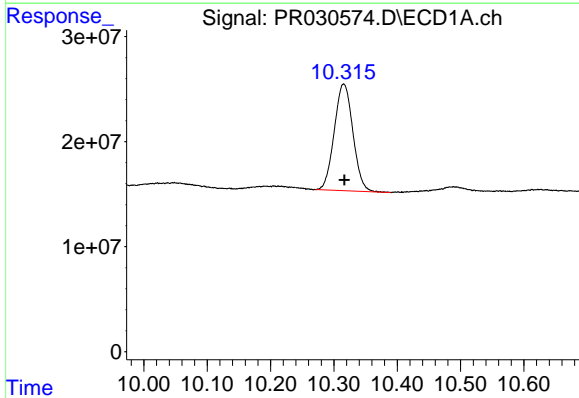


#1 Tetrachloro-m-xylene
 R.T.: 4.555 min
 Delta R.T.: 0.002 min
 Response: 206381154
 Conc: 6.16 ng/ml

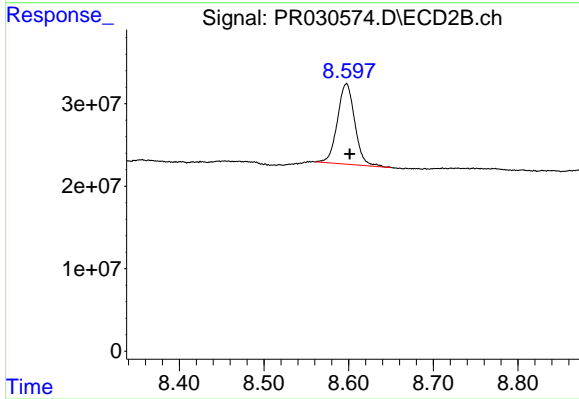
Instrument :
 ECD_R
 ClientSampleId :



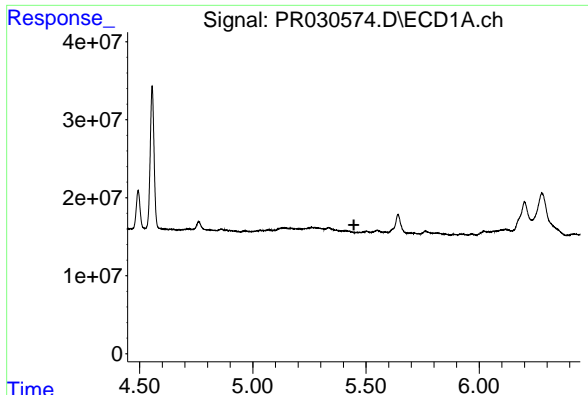
#1 Tetrachloro-m-xylene
 R.T.: 3.695 min
 Delta R.T.: 0.003 min
 Response: 327867004
 Conc: 6.51 ng/ml



#2 Decachlorobiphenyl
 R.T.: 10.315 min
 Delta R.T.: -0.001 min
 Response: 207542445
 Conc: 5.35 ng/ml



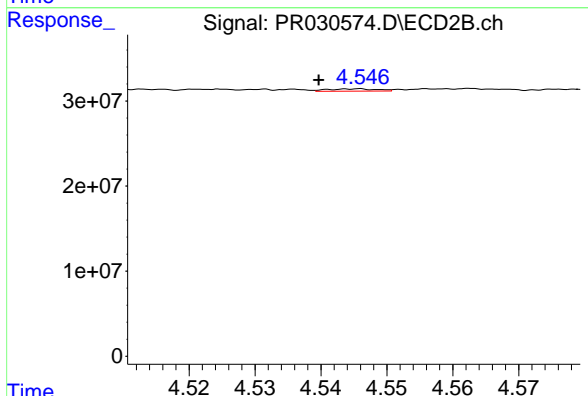
#2 Decachlorobiphenyl
 R.T.: 8.597 min
 Delta R.T.: -0.004 min
 Response: 138108398
 Conc: 5.77 ng/ml



#3 AR-1016-1

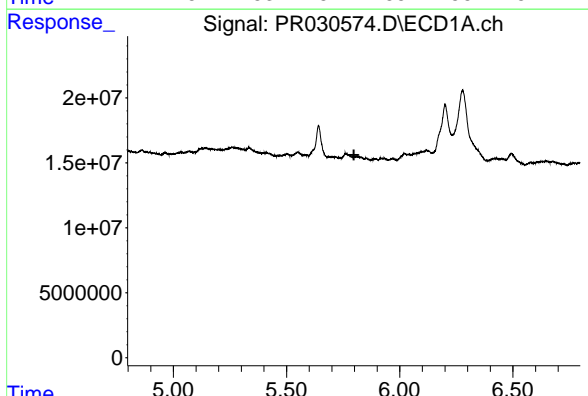
R.T.: 0.000 min
 Exp R.T. : 5.446 min
 Response: 0
 Conc: N.D.

Instrument :
 ECD_R
 ClientSampleId :



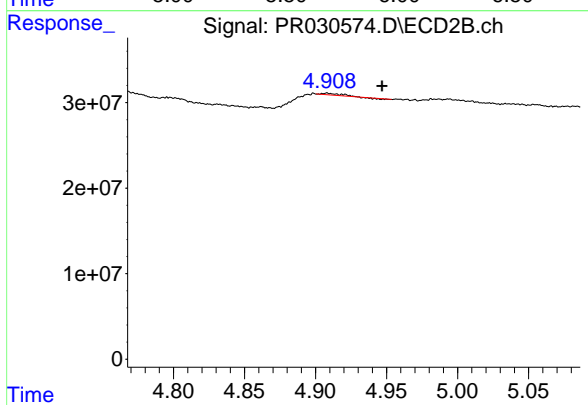
#3 AR-1016-1

R.T.: 4.545 min
 Delta R.T.: 0.006 min
 Response: 1427352
 Conc: 1.04 ng/ml



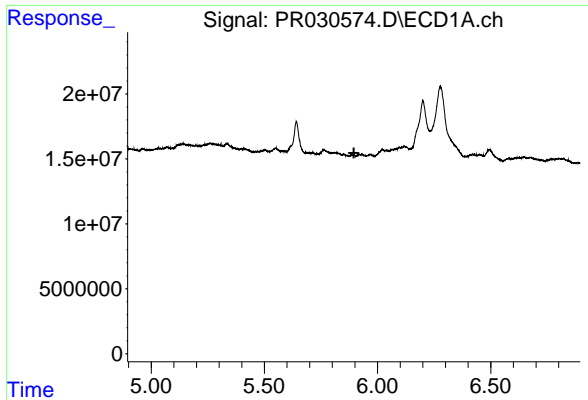
#4 AR-1016-2

R.T.: 0.000 min
 Exp R.T. : 5.797 min
 Response: 0
 Conc: N.D.



#4 AR-1016-2

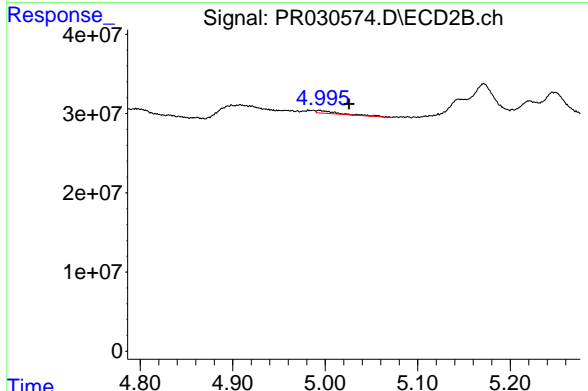
R.T.: 4.908 min
 Delta R.T.: -0.039 min
 Response: 1518885
 Conc: 1.01 ng/ml



#5 AR-1016-3

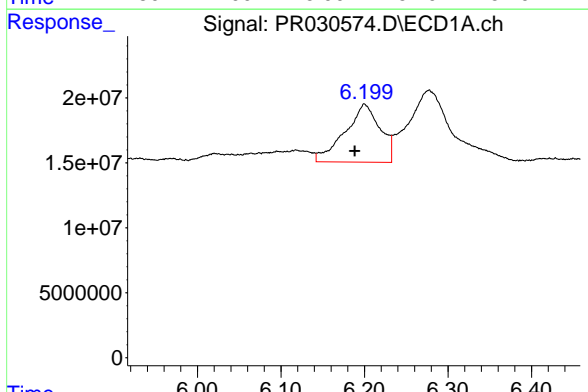
R.T.: 0.000 min
 Exp R.T.: 5.896 min
 Response: 0
 Conc: N.D.

Instrument :
 ECD_R
 ClientSampleId :



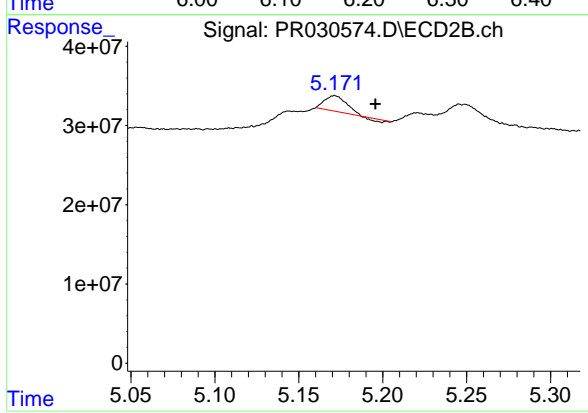
#5 AR-1016-3

R.T.: 4.994 min
 Delta R.T.: -0.032 min
 Response: 5796928
 Conc: 3.86 ng/ml



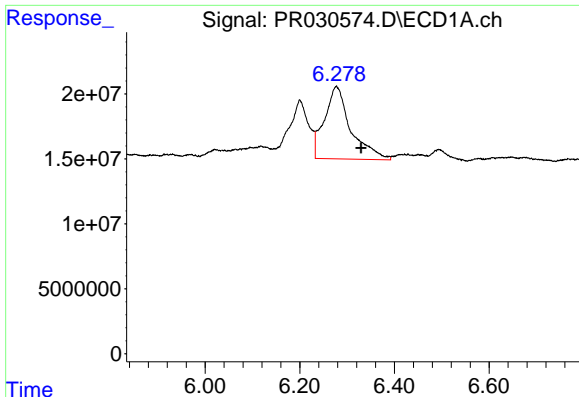
#6 AR-1016-4

R.T.: 6.200 min
 Delta R.T.: 0.012 min
 Response: 130664122
 Conc: 147.67 ng/ml



#6 AR-1016-4

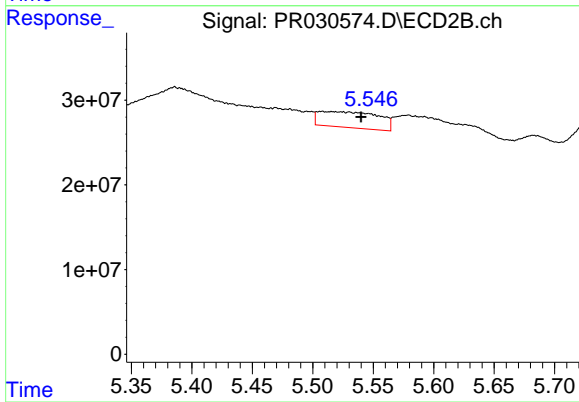
R.T.: 5.172 min
 Delta R.T.: -0.024 min
 Response: 16215525
 Conc: 9.71 ng/ml



#7 AR-1016-5

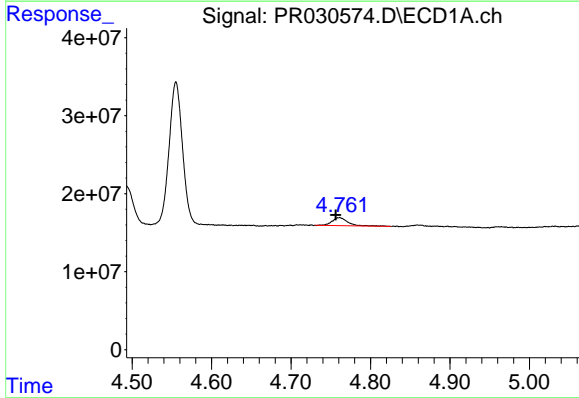
R.T.: 6.277 min
 Delta R.T.: -0.053 min
 Response: 215291613
 Conc: 219.87 ng/ml

Instrument :
 ECD_R
 ClientSampleId :



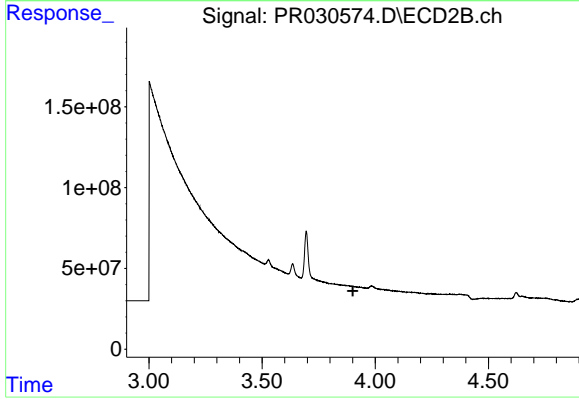
#7 AR-1016-5

R.T.: 5.507 min
 Delta R.T.: -0.032 min
 Response: 64300134
 Conc: 36.00 ng/ml



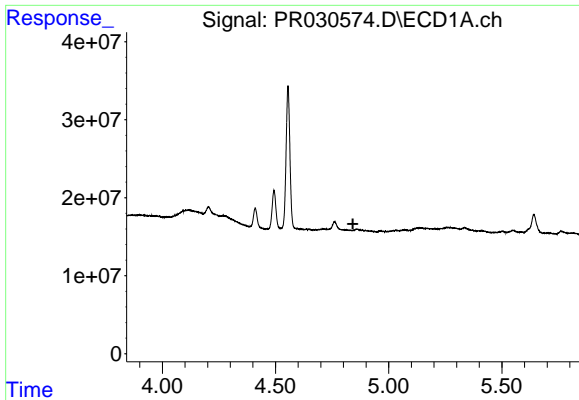
#8 AR-1221-1

R.T.: 4.761 min
 Delta R.T.: 0.005 min
 Response: 14637572
 Conc: 30.65 ng/ml



#8 AR-1221-1

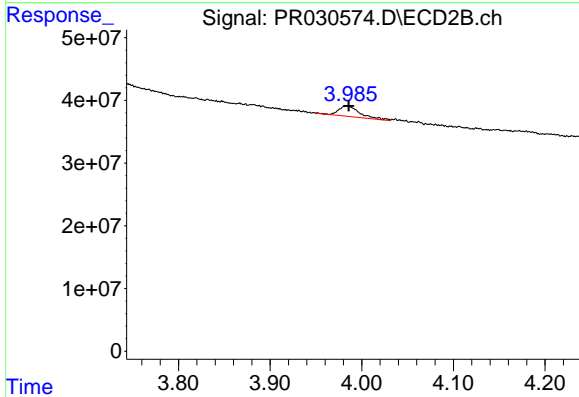
R.T.: 0.000 min
 Exp R.T. : 3.901 min
 Response: 0
 Conc: N.D.



#9 AR-1221-2

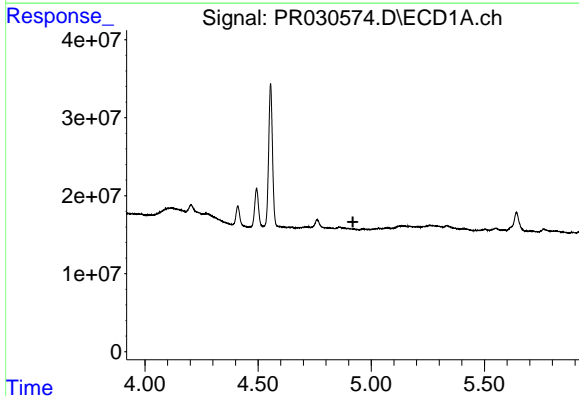
R.T.: 0.000 min
 Exp R.T. : 4.842 min
 Response: 0
 Conc: N.D.

Instrument :
 ECD_R
 ClientSampleId :



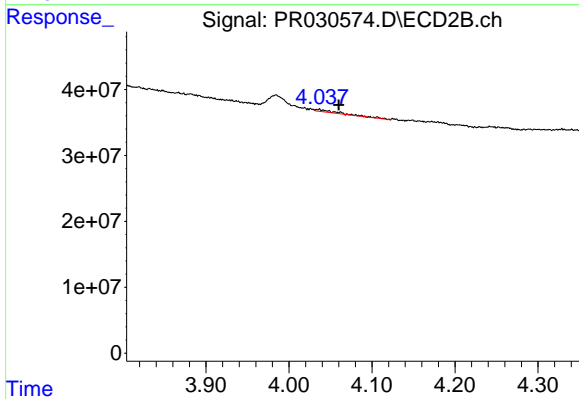
#9 AR-1221-2

R.T.: 3.984 min
 Delta R.T.: -0.002 min
 Response: 26956667
 Conc: 52.84 ng/ml



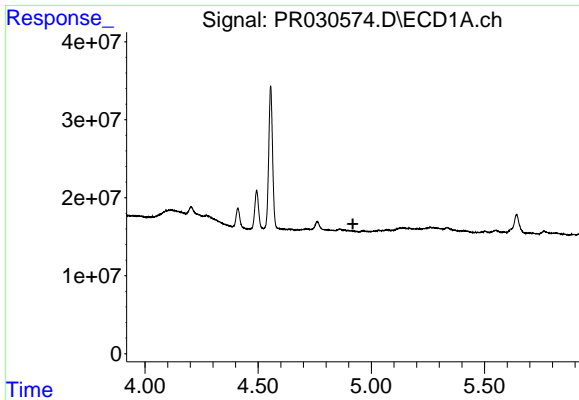
#10 AR-1221-3

R.T.: 0.000 min
 Exp R.T. : 4.919 min
 Response: 0
 Conc: N.D.



#10 AR-1221-3

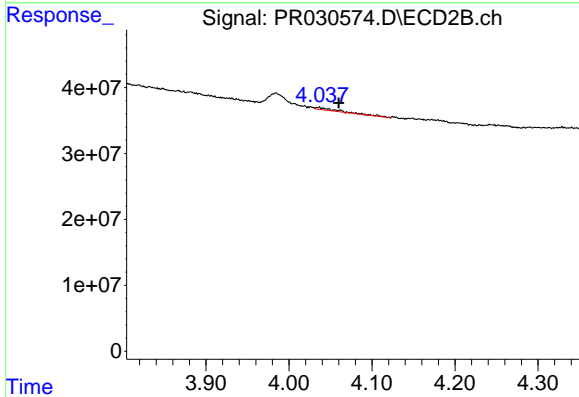
R.T.: 4.036 min
 Delta R.T.: -0.024 min
 Response: 6687520
 Conc: 4.01 ng/ml



#11 AR-1232-1

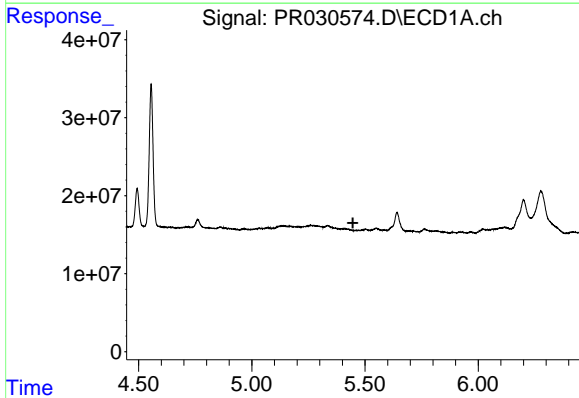
R.T.: 0.000 min
 Exp R.T. : 4.919 min
 Response: 0
 Conc: N.D.

Instrument :
 ECD_R
 ClientSampled :



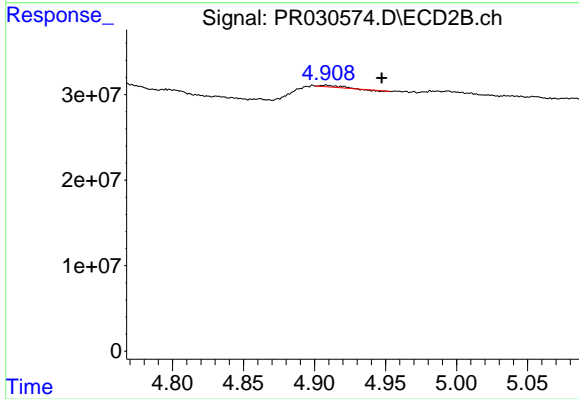
#11 AR-1232-1

R.T.: 4.036 min
 Delta R.T.: -0.024 min
 Response: 6687520
 Conc: 6.78 ng/ml



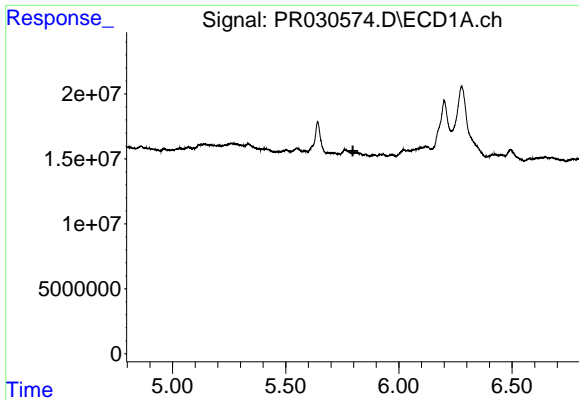
#12 AR-1232-2

R.T.: 0.000 min
 Exp R.T. : 5.447 min
 Response: 0
 Conc: N.D.



#12 AR-1232-2

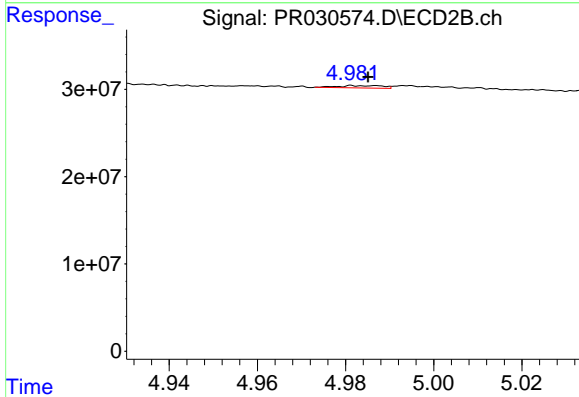
R.T.: 4.908 min
 Delta R.T.: -0.039 min
 Response: 1518885
 Conc: 2.46 ng/ml



#13 AR-1232-3

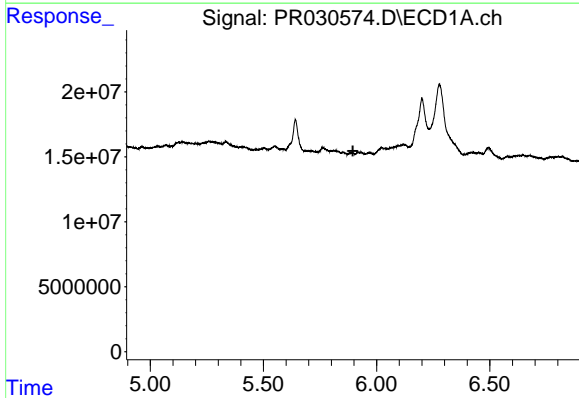
R.T.: 0.000 min
 Exp R.T. : 5.797 min
 Response: 0
 Conc: N.D.

Instrument :
 ECD_R
 ClientSampled :



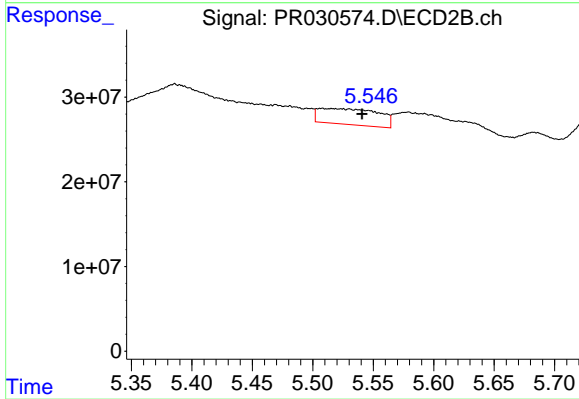
#13 AR-1232-3

R.T.: 4.987 min
 Delta R.T.: 0.001 min
 Response: 1943306
 Conc: 4.33 ng/ml



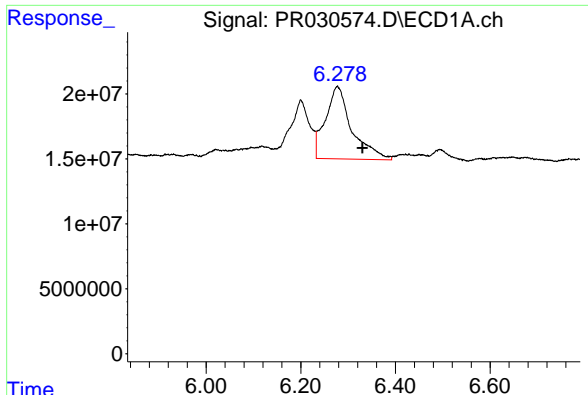
#14 AR-1232-4

R.T.: 0.000 min
 Exp R.T. : 5.895 min
 Response: 0
 Conc: N.D.



#14 AR-1232-4

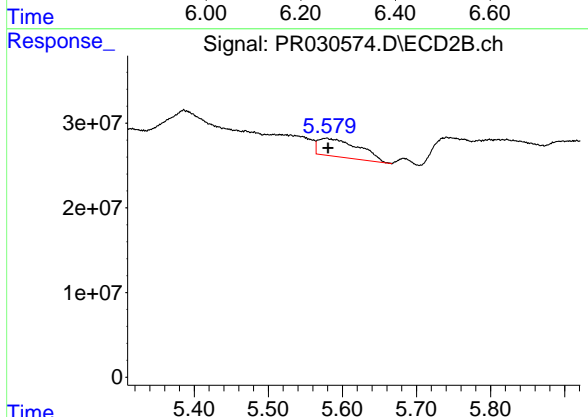
R.T.: 5.507 min
 Delta R.T.: -0.033 min
 Response: 64300134
 Conc: 80.37 ng/ml



#15 AR-1232-5

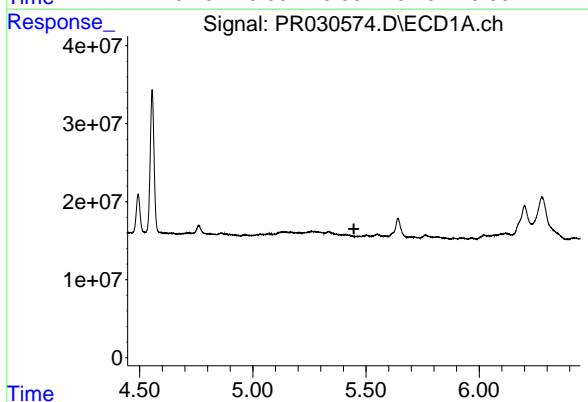
R.T.: 6.277 min
 Delta R.T.: -0.053 min
 Response: 215291613
 Conc: 555.41 ng/ml

Instrument :
 ECD_R
 ClientSampleId :



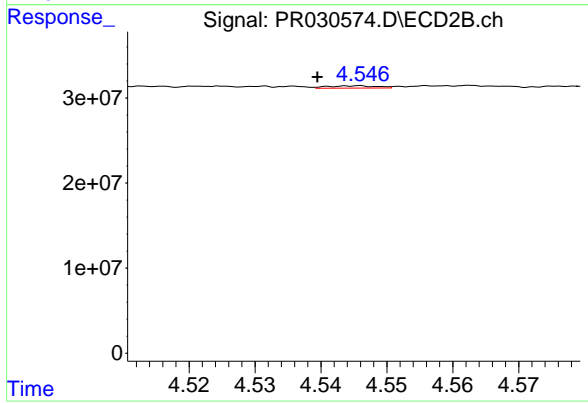
#15 AR-1232-5

R.T.: 5.579 min
 Delta R.T.: -0.002 min
 Response: 81226950
 Conc: 112.16 ng/ml



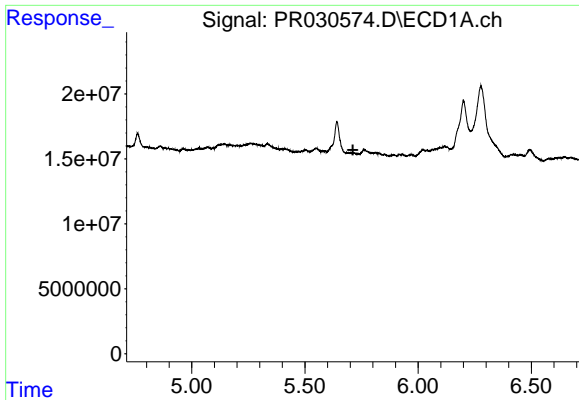
#16 AR-1242-1

R.T.: 0.000 min
 Exp R.T. : 5.447 min
 Response: 0
 Conc: N.D.



#16 AR-1242-1

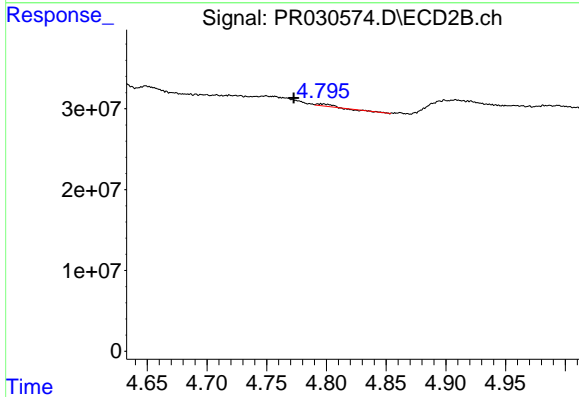
R.T.: 4.545 min
 Delta R.T.: 0.006 min
 Response: 1427352
 Conc: 1.22 ng/ml



#17 AR-1242-2

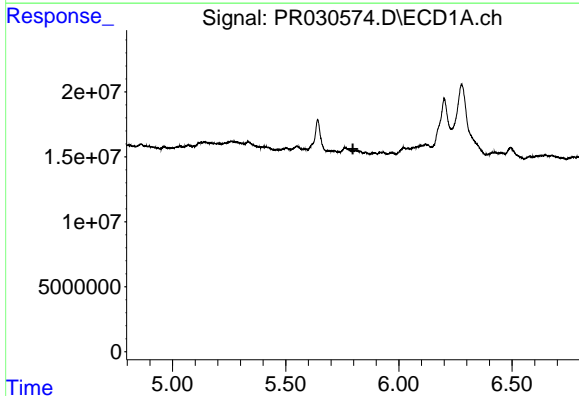
R.T.: 0.000 min
 Exp R.T. : 5.712 min
 Response: 0
 Conc: N.D.

Instrument :
 ECD_R
 ClientSampled :



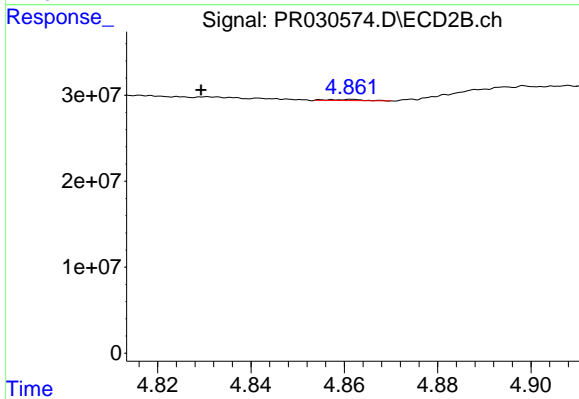
#17 AR-1242-2

R.T.: 4.795 min
 Delta R.T.: 0.023 min
 Response: 2030703
 Conc: 0.75 ng/ml



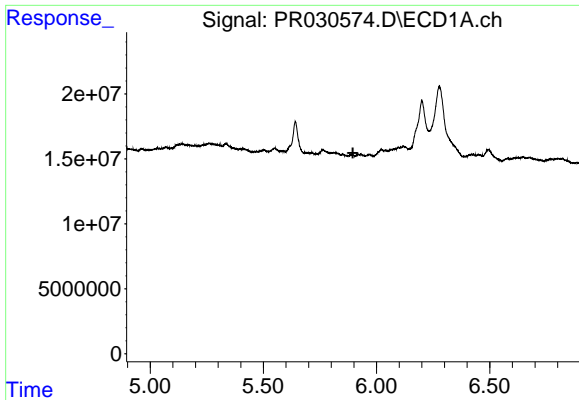
#18 AR-1242-3

R.T.: 0.000 min
 Exp R.T. : 5.797 min
 Response: 0
 Conc: N.D.



#18 AR-1242-3

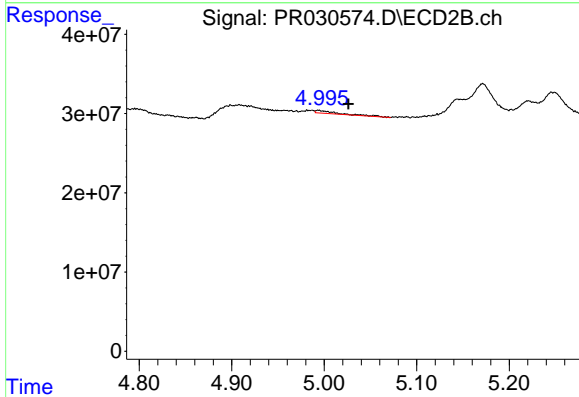
R.T.: 4.862 min
 Delta R.T.: 0.032 min
 Response: 708172
 Conc: 0.44 ng/ml



#19 AR-1242-4

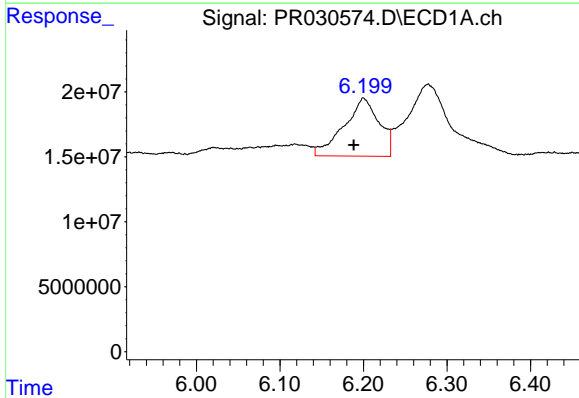
R.T.: 0.000 min
 Exp R.T.: 5.896 min
 Response: 0
 Conc: N.D.

Instrument :
 ECD_R
 ClientSampled :



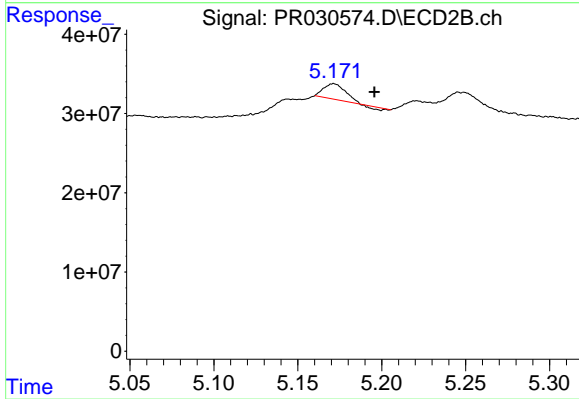
#19 AR-1242-4

R.T.: 4.994 min
 Delta R.T.: -0.033 min
 Response: 5796928
 Conc: 4.58 ng/ml



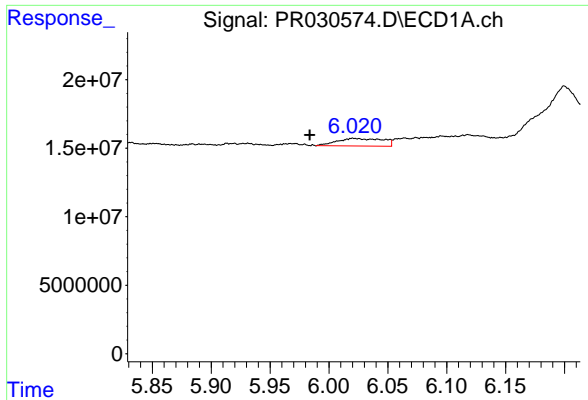
#20 AR-1242-5

R.T.: 6.200 min
 Delta R.T.: 0.012 min
 Response: 130664122
 Conc: 179.11 ng/ml



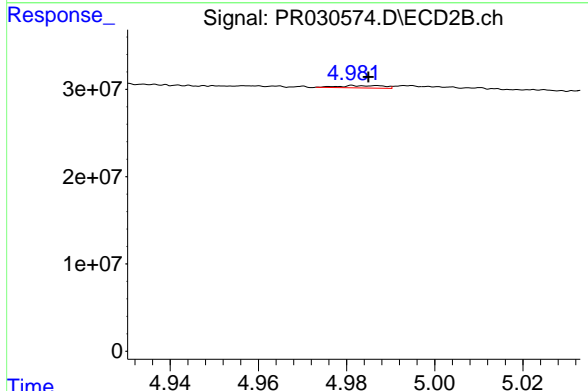
#20 AR-1242-5

R.T.: 5.172 min
 Delta R.T.: -0.024 min
 Response: 16215525
 Conc: 11.39 ng/ml

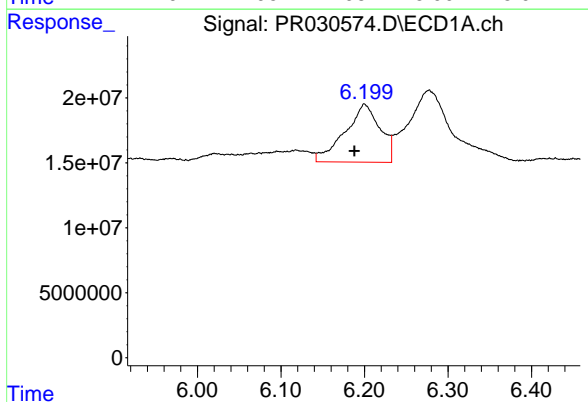


#21 AR-1248-1
 R.T.: 6.021 min
 Delta R.T.: 0.037 min
 Response: 15045241
 Conc: 14.60 ng/ml

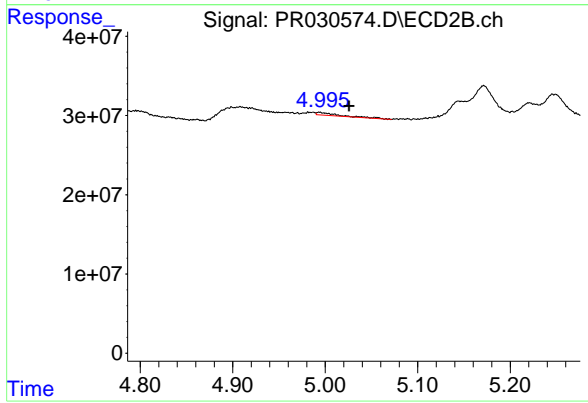
Instrument :
 ECD_R
 ClientSampled :



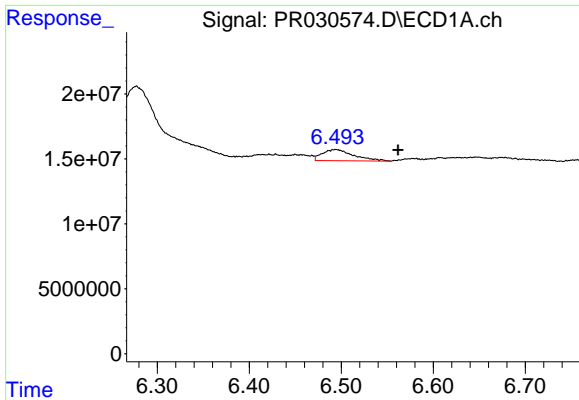
#21 AR-1248-1
 R.T.: 4.987 min
 Delta R.T.: 0.002 min
 Response: 1943306
 Conc: 1.13 ng/ml



#22 AR-1248-2
 R.T.: 6.200 min
 Delta R.T.: 0.012 min
 Response: 130664122
 Conc: 112.35 ng/ml



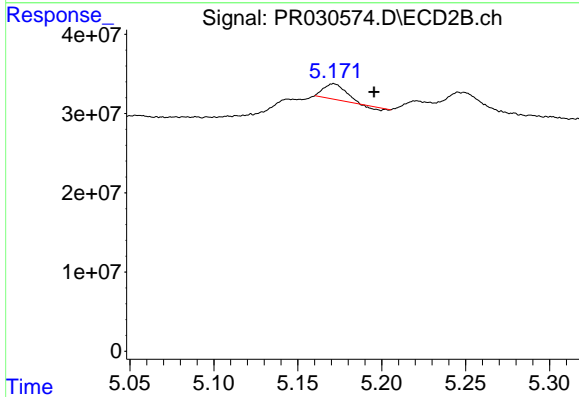
#22 AR-1248-2
 R.T.: 4.994 min
 Delta R.T.: -0.032 min
 Response: 5796928
 Conc: 3.24 ng/ml



#23 AR-1248-3

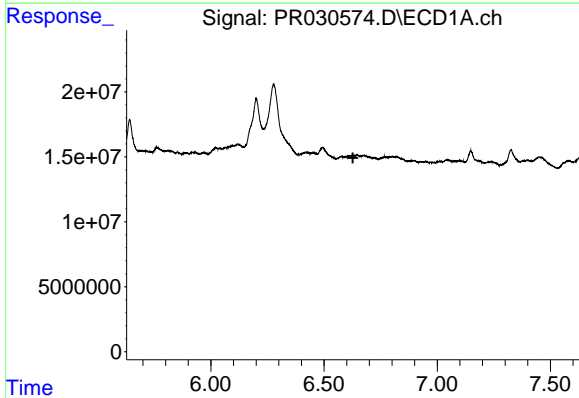
R.T.: 6.494 min
 Delta R.T.: -0.068 min
 Response: 20350030
 Conc: 19.70 ng/ml

Instrument :
 ECD_R
 ClientSampled :



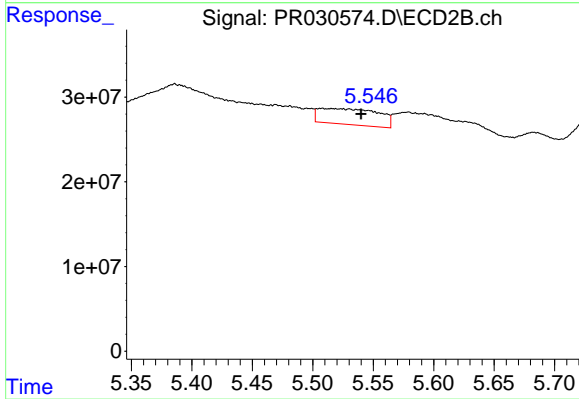
#23 AR-1248-3

R.T.: 5.172 min
 Delta R.T.: -0.024 min
 Response: 16215525
 Conc: 7.26 ng/ml



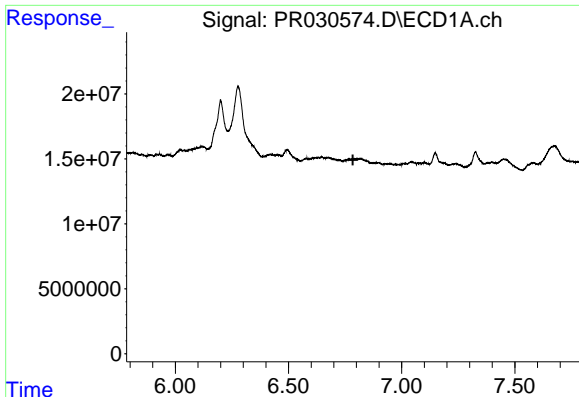
#24 AR-1248-4

R.T.: 0.000 min
 Exp R.T. : 6.628 min
 Response: 0
 Conc: N.D.



#24 AR-1248-4

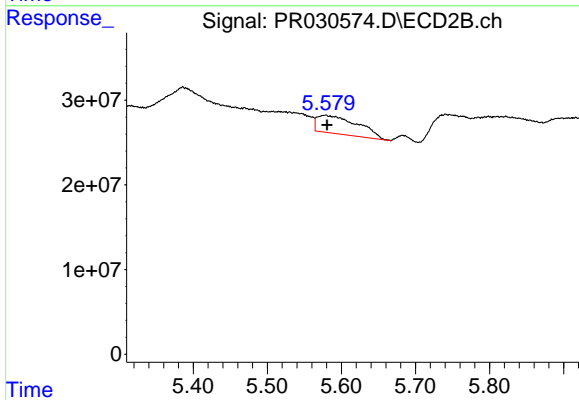
R.T.: 5.507 min
 Delta R.T.: -0.033 min
 Response: 64300134
 Conc: 18.99 ng/ml



#25 AR-1248-5

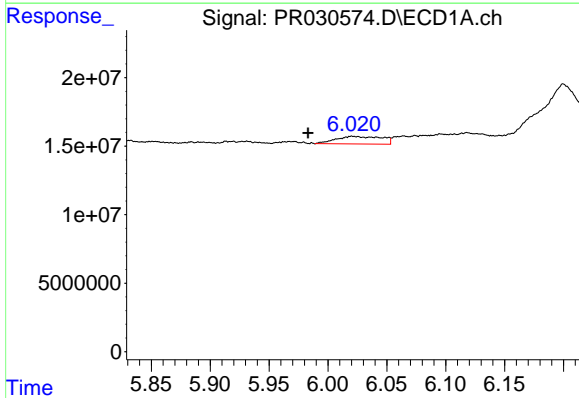
R.T.: 0.000 min
Exp R.T.: 6.785 min
Response: 0
Conc: N.D.

Instrument :
ECD_R
ClientSampled :



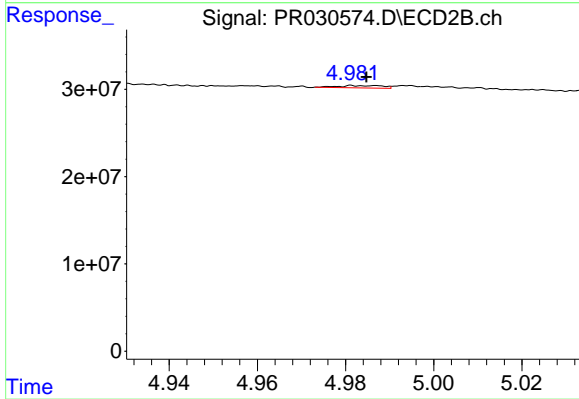
#25 AR-1248-5

R.T.: 5.579 min
Delta R.T.: -0.002 min
Response: 81226950
Conc: 33.53 ng/ml



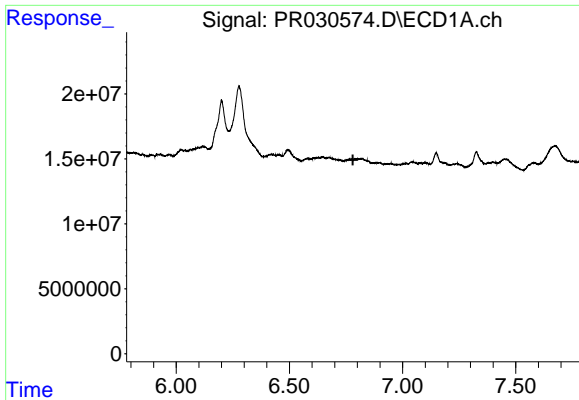
#26 AR-1254-1

R.T.: 6.021 min
Delta R.T.: 0.038 min
Response: 15045241
Conc: 22.59 ng/ml



#26 AR-1254-1

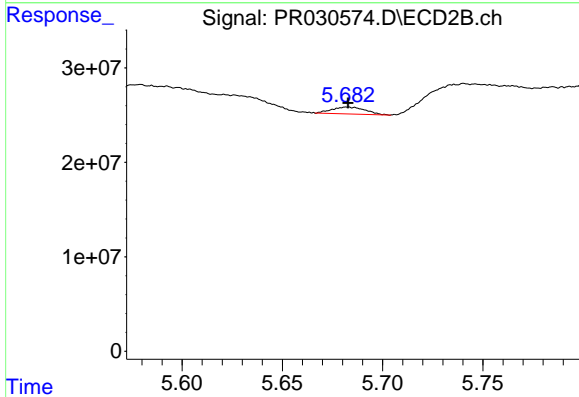
R.T.: 4.987 min
Delta R.T.: 0.002 min
Response: 1943306
Conc: 1.61 ng/ml



#27 AR-1254-2

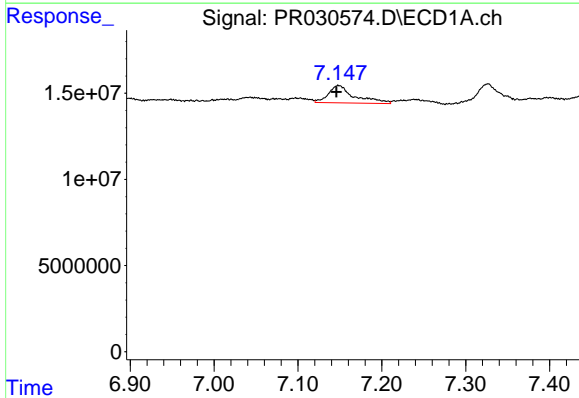
R.T.: 0.000 min
 Exp R.T.: 6.780 min
 Response: 0
 Conc: N.D.

Instrument :
 ECD_R
 ClientSampled :



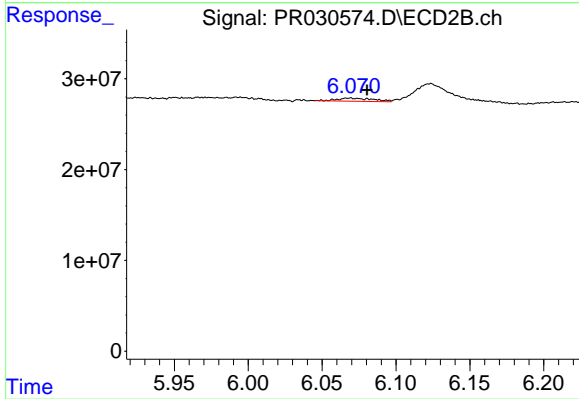
#27 AR-1254-2

R.T.: 5.683 min
 Delta R.T.: 0.000 min
 Response: 8466293
 Conc: 2.86 ng/ml



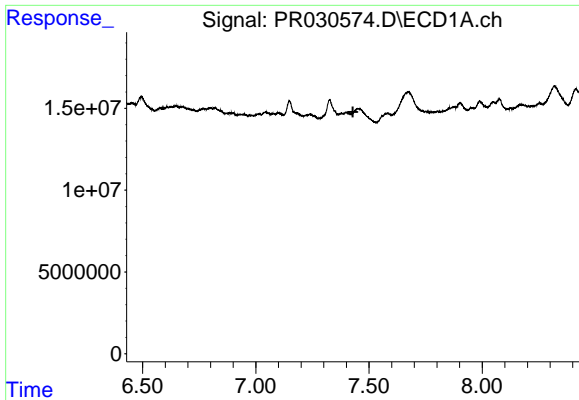
#28 AR-1254-3

R.T.: 7.149 min
 Delta R.T.: 0.002 min
 Response: 21848117
 Conc: 10.19 ng/ml



#28 AR-1254-3

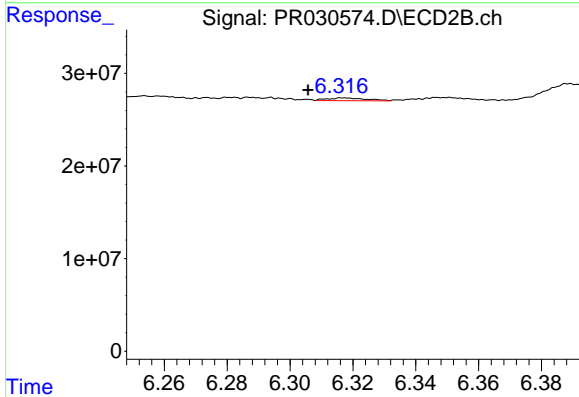
R.T.: 6.068 min
 Delta R.T.: -0.012 min
 Response: 5762719
 Conc: 1.17 ng/ml



#29 AR-1254-4

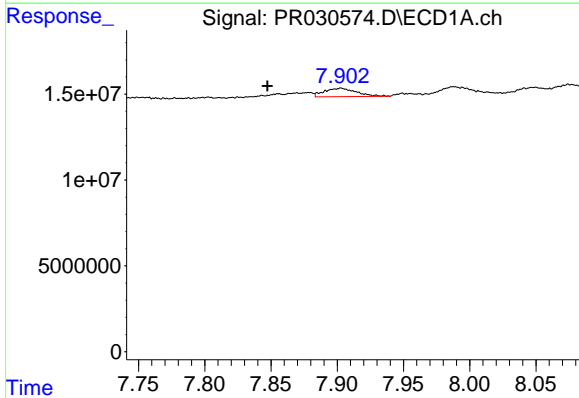
R.T.: 0.000 min
 Exp R.T.: 7.429 min
 Response: 0
 Conc: N.D.

Instrument :
 ECD_R
 ClientSampleId :



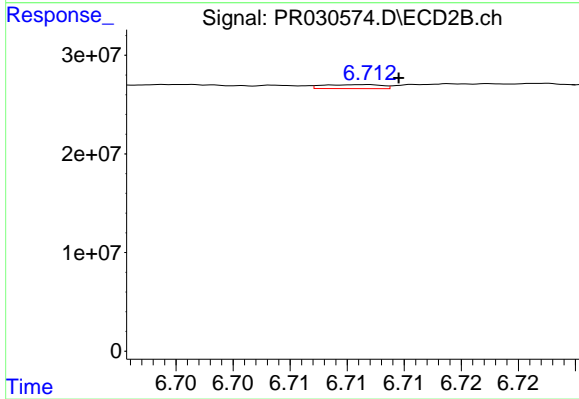
#29 AR-1254-4

R.T.: 6.317 min
 Delta R.T.: 0.012 min
 Response: 2584367
 Conc: 0.68 ng/ml



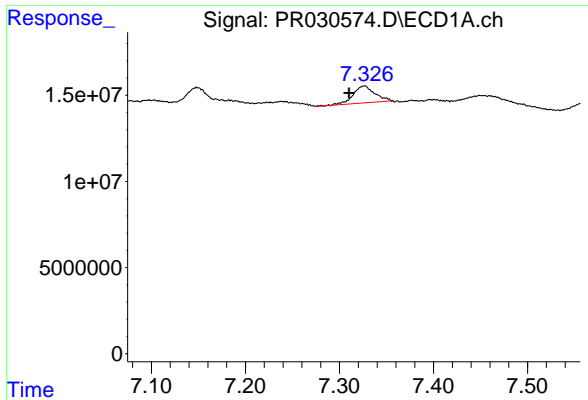
#30 AR-1254-5

R.T.: 7.903 min
 Delta R.T.: 0.055 min
 Response: 8259714
 Conc: 4.56 ng/ml



#30 AR-1254-5

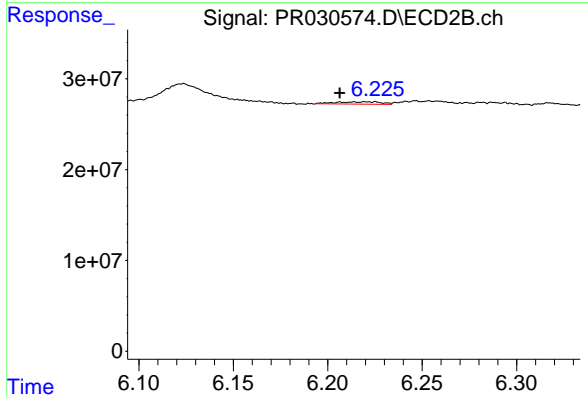
R.T.: 6.711 min
 Delta R.T.: -0.004 min
 Response: 1432869
 Conc: 0.37 ng/ml



#31 AR-1260-1

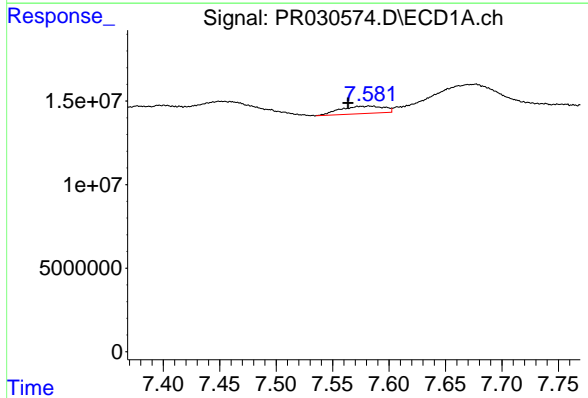
R.T.: 7.327 min
 Delta R.T.: 0.016 min
 Response: 15791932
 Conc: 8.95 ng/ml

Instrument :
 ECD_R
 ClientSampleId :



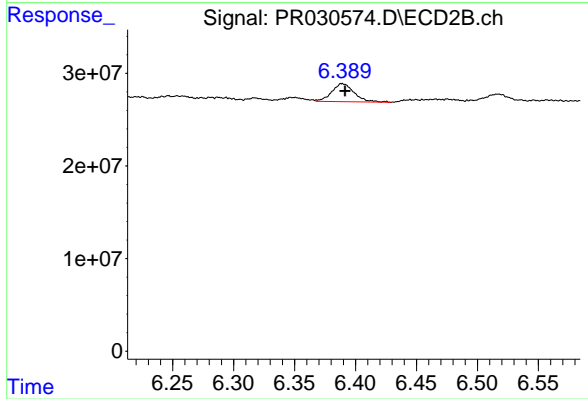
#31 AR-1260-1

R.T.: 6.225 min
 Delta R.T.: 0.019 min
 Response: 4262091
 Conc: 1.19 ng/ml



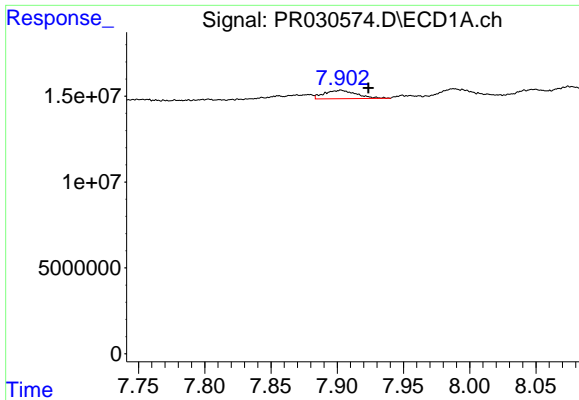
#32 AR-1260-2

R.T.: 7.582 min
 Delta R.T.: 0.019 min
 Response: 11831033
 Conc: 4.73 ng/ml



#32 AR-1260-2

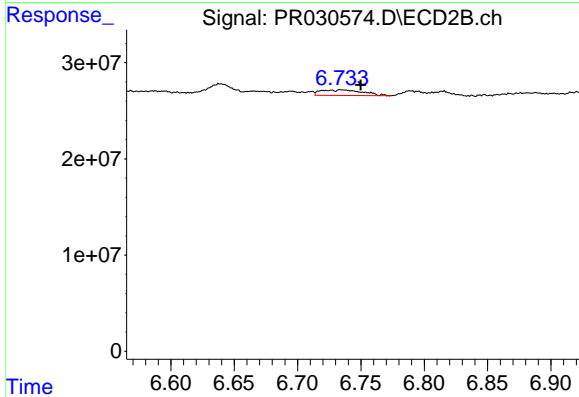
R.T.: 6.389 min
 Delta R.T.: -0.002 min
 Response: 25096804
 Conc: 5.46 ng/ml



#33 AR-1260-3

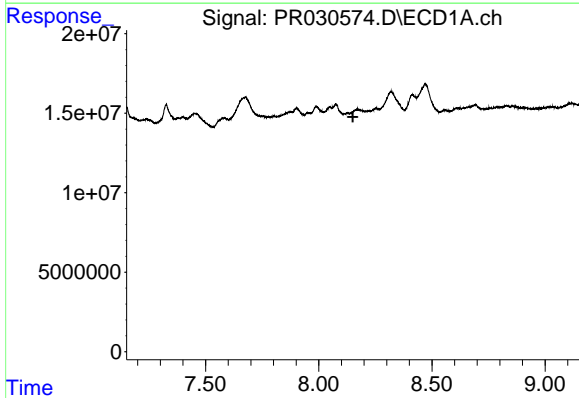
R.T.: 7.903 min
 Delta R.T.: -0.021 min
 Response: 8259714
 Conc: 4.11 ng/ml

Instrument :
 ECD_R
 ClientSampleId :



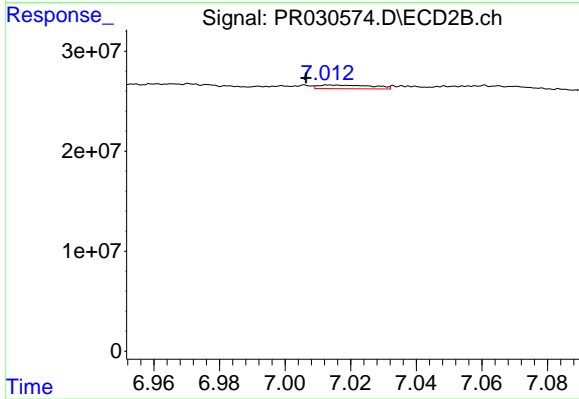
#33 AR-1260-3

R.T.: 6.734 min
 Delta R.T.: -0.015 min
 Response: 13132048
 Conc: 3.76 ng/ml



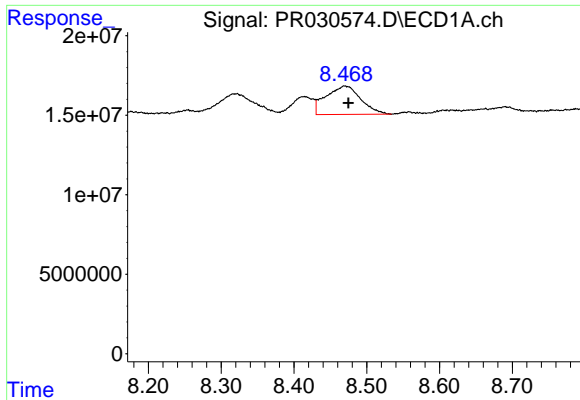
#34 AR-1260-4

R.T.: 0.000 min
 Exp R.T. : 8.151 min
 Response: 0
 Conc: N.D.



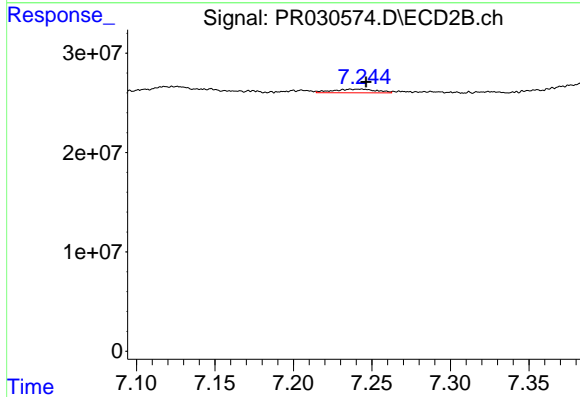
#34 AR-1260-4

R.T.: 7.014 min
 Delta R.T.: 0.008 min
 Response: 4276996
 Conc: 1.72 ng/ml

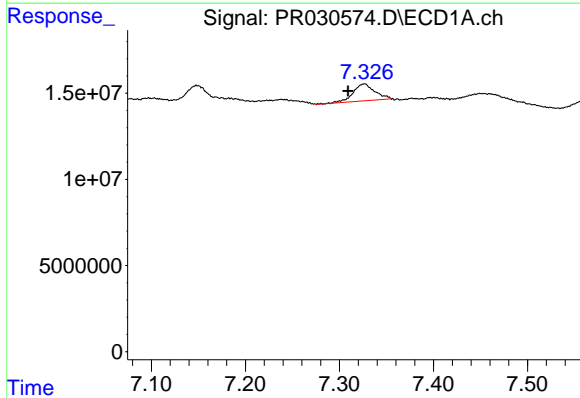


#35 AR-1260-5
 R.T.: 8.469 min
 Delta R.T.: -0.005 min
 Response: 59430346
 Conc: 13.36 ng/ml

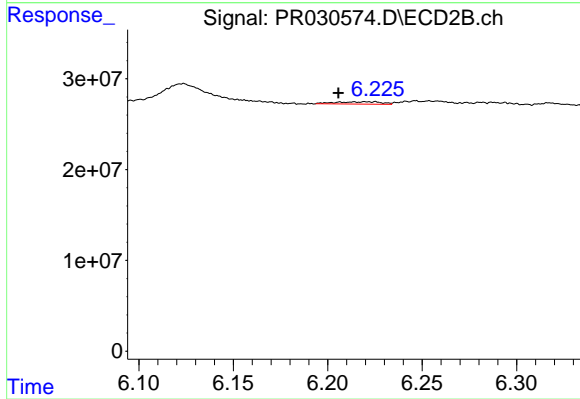
Instrument :
 ECD_R
 ClientSampleId :



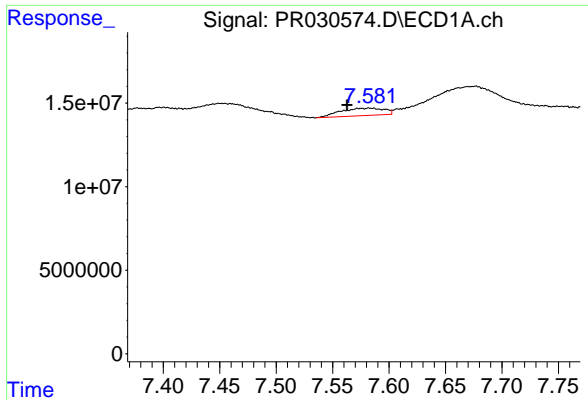
#35 AR-1260-5
 R.T.: 7.243 min
 Delta R.T.: -0.003 min
 Response: 7180524
 Conc: 1.34 ng/ml



#36 AR-1262-1
 R.T.: 7.327 min
 Delta R.T.: 0.017 min
 Response: 15791932
 Conc: 10.74 ng/ml



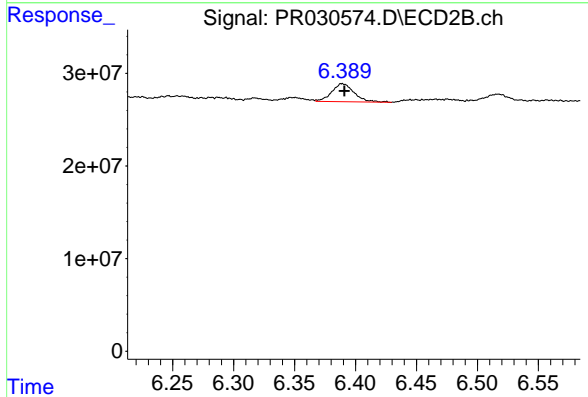
#36 AR-1262-1
 R.T.: 6.225 min
 Delta R.T.: 0.019 min
 Response: 4262091
 Conc: 1.45 ng/ml



#37 AR-1262-2

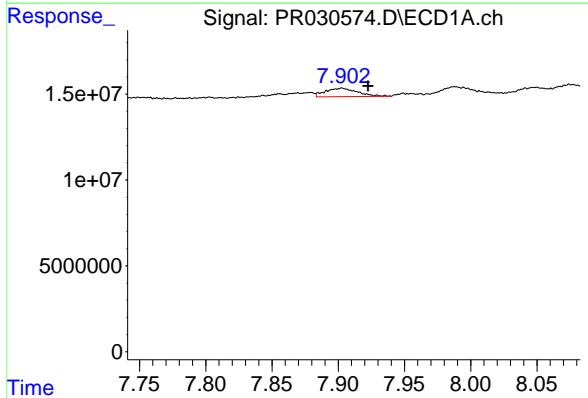
R.T.: 7.582 min
 Delta R.T.: 0.019 min
 Response: 11831033
 Conc: 5.96 ng/ml

Instrument :
 ECD_R
 ClientSampleId :



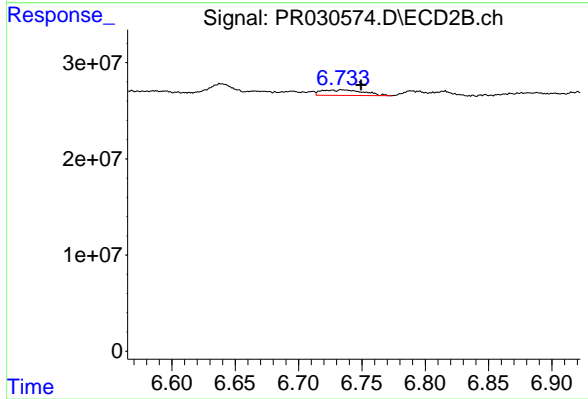
#37 AR-1262-2

R.T.: 6.389 min
 Delta R.T.: -0.002 min
 Response: 25096804
 Conc: 7.23 ng/ml



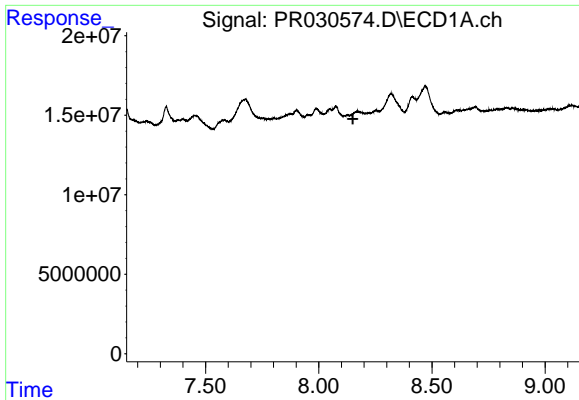
#38 AR-1262-3

R.T.: 7.903 min
 Delta R.T.: -0.020 min
 Response: 8259714
 Conc: 2.90 ng/ml



#38 AR-1262-3

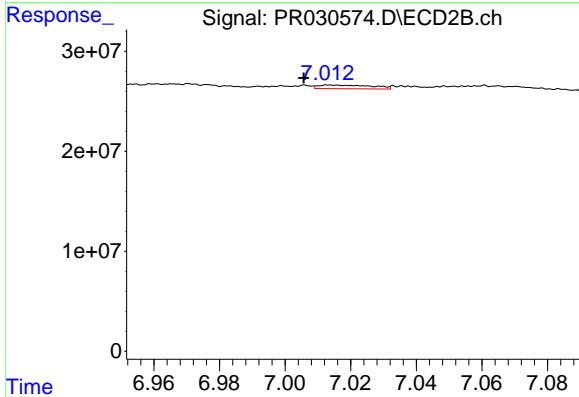
R.T.: 6.734 min
 Delta R.T.: -0.015 min
 Response: 13132048
 Conc: 2.92 ng/ml



#39 AR-1262-4

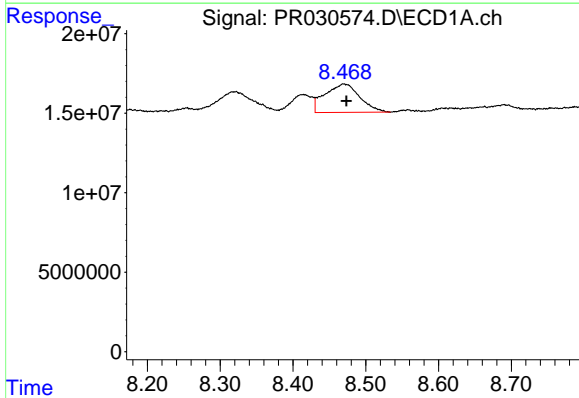
R.T.: 0.000 min
 Exp R.T.: 8.151 min
 Response: 0
 Conc: N.D.

Instrument :
 ECD_R
 ClientSampleId :



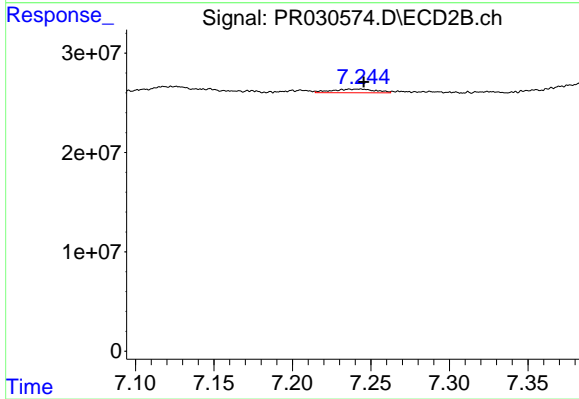
#39 AR-1262-4

R.T.: 7.014 min
 Delta R.T.: 0.009 min
 Response: 4276996
 Conc: 1.37 ng/ml



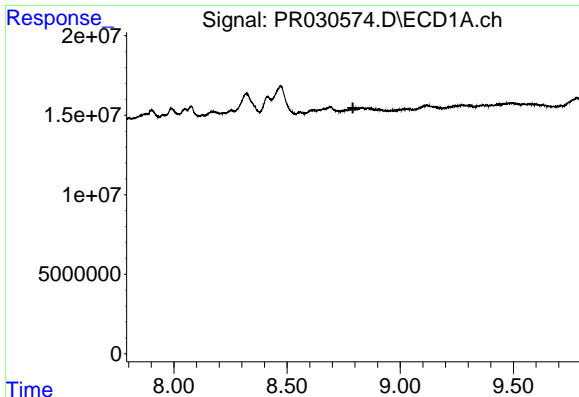
#40 AR-1262-5

R.T.: 8.469 min
 Delta R.T.: -0.004 min
 Response: 59430346
 Conc: 11.77 ng/ml



#40 AR-1262-5

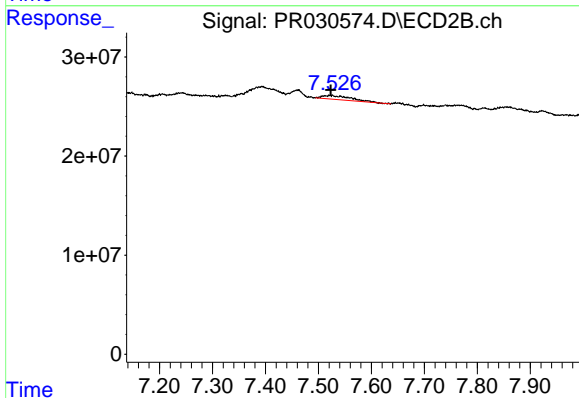
R.T.: 7.243 min
 Delta R.T.: -0.003 min
 Response: 7180524
 Conc: 1.25 ng/ml



#41 AR-1268-1

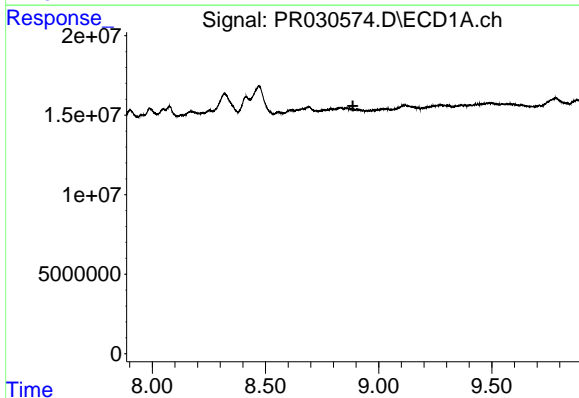
R.T.: 0.000 min
 Exp R.T. : 8.791 min
 Response: 0
 Conc: N.D.

Instrument :
 ECD_R
 ClientSampleId :



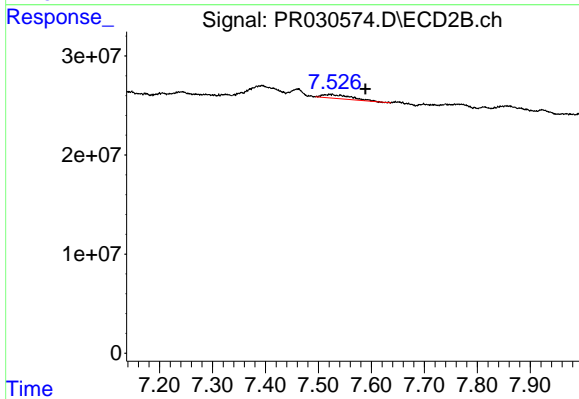
#41 AR-1268-1

R.T.: 7.526 min
 Delta R.T.: 0.003 min
 Response: 14553381
 Conc: 3.11 ng/ml



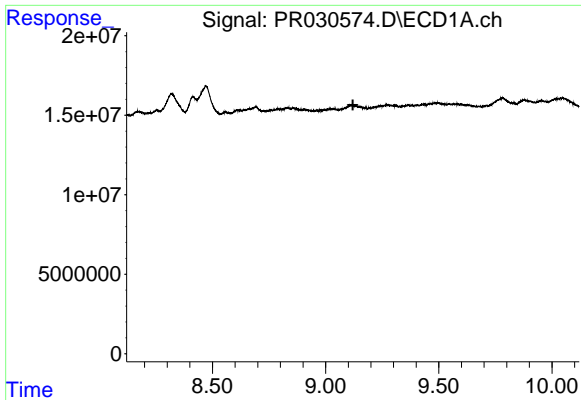
#42 AR-1268-2

R.T.: 0.000 min
 Exp R.T. : 8.886 min
 Response: 0
 Conc: N.D.



#42 AR-1268-2

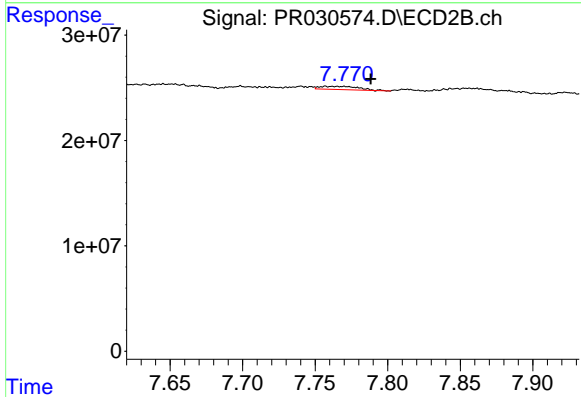
R.T.: 7.526 min
 Delta R.T.: -0.063 min
 Response: 14553381
 Conc: 3.65 ng/ml



#43 AR-1268-3

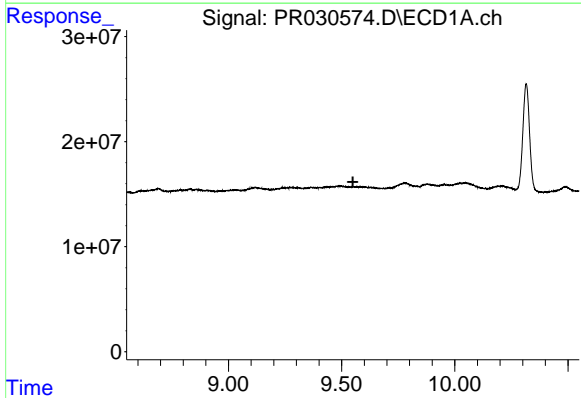
R.T.: 0.000 min
 Exp R.T.: 9.120 min
 Response: 0
 Conc: N.D.

Instrument :
 ECD_R
 ClientSampled :



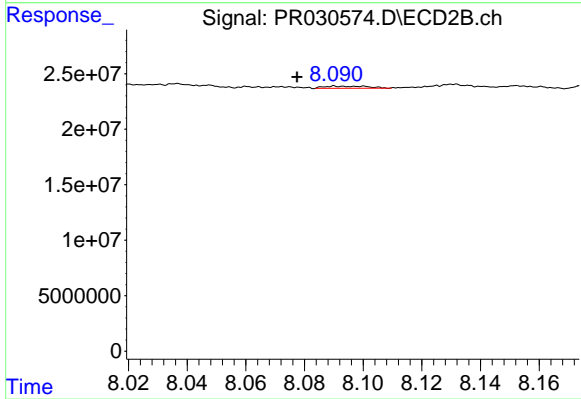
#43 AR-1268-3

R.T.: 7.765 min
 Delta R.T.: -0.023 min
 Response: 5665686
 Conc: 1.89 ng/ml



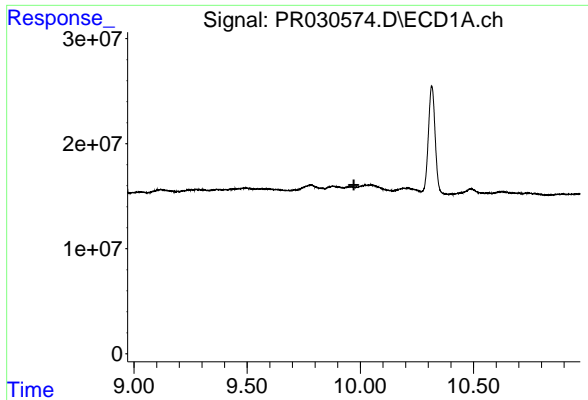
#44 AR-1268-4

R.T.: 0.000 min
 Exp R.T.: 9.550 min
 Response: 0
 Conc: N.D.



#44 AR-1268-4

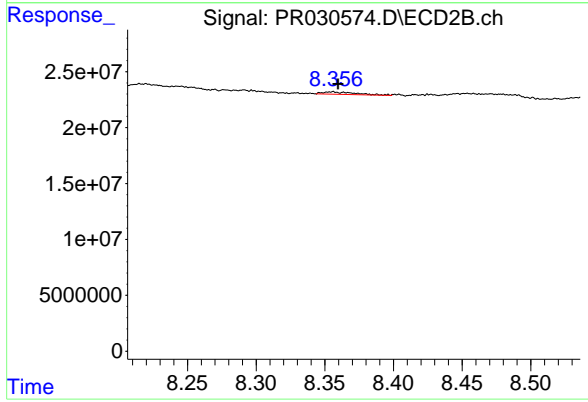
R.T.: 8.094 min
 Delta R.T.: 0.016 min
 Response: 2037804
 Conc: 1.60 ng/ml



#45 AR-1268-5

R.T.: 0.000 min
 Exp R.T.: 9.971 min
 Response: 0
 Conc: N.D.

Instrument :
 ECD_R
 ClientSampleId :



#45 AR-1268-5

R.T.: 8.355 min
 Delta R.T.: -0.005 min
 Response: 3732191
 Conc: 0.52 ng/ml