

Data Path : Z:\pestpcbsrv\HPCHEM1\ECD_R\Data\PR072419\
 Data File : PR039699.D
 Signal(s) : Signal #1: ECD1A.ch Signal #2: ECD2B.ch
 Acq On : 24 Jul 2019 23:53
 Operator : SM\AJ
 Sample : K3984-05
 Misc :
 ALS Vial : 20 Sample Multiplier: 1

Instrument :
 ECD_R
 ClientSampleId :
 S8-08-S

Integration File signal 1: autoint1.e
 Integration File signal 2: autoint2.e
 Quant Time: Jul 25 01:47:06 2019
 Quant Method : Z:\pestpcbsrv\HPCHEM1\ECD_R\Method\PR072219.M
 Quant Title : GC EXTRACTABLES
 QLast Update : Mon Jul 22 14:03:19 2019
 Response via : Initial Calibration
 Integrator: ChemStation

Volume Inj. : 2 µl
 Signal #1 Phase : ZB-MR1 Signal #2 Phase: ZB-MR2
 Signal #1 Info : 30Mx0.32mmx 0.50µ Signal #2 Info : 30M x 0.32mm x 0.25µm

Compound	RT#1	RT#2	Resp#1	Resp#2	ng/ml	ng/ml
System Monitoring Compounds						
1) SA Tetrachlo...	3.756	4.602	39356183	148.2E6	16.399	14.784
2) SA Decachlor...	8.691	10.332	42860686	170.1E6	17.251	18.115
Target Compounds						
3) L1 AR-1016-1	4.838	0.000	5748065	0	65.380	N.D. #
4) L1 AR-1016-2	4.838	0.000	5748065	0	39.684	N.D. #
5) L1 AR-1016-3	5.014	0.000	1473344	0	21.212	N.D. #
6) L1 AR-1016-4	5.054	0.000	2421651	0	43.020	N.D. #
7) L1 AR-1016-5	5.260	6.233	559126	9838454	7.455	39.160 #
8) L2 AR-1221-1	3.950	0.000	929438	0	28.557	N.D. #
9) L2 AR-1221-2	4.051	0.000	1176434	0	48.352	N.D. #
10) L2 AR-1221-3	4.124	0.000	561725	0	7.172	N.D. #
11) L3 AR-1232-1	4.124	0.000	561725	0	7.188	N.D. #
12) L3 AR-1232-2	4.838	0.000	5748065	0	61.152	N.D. #
13) L3 AR-1232-3	5.014	0.000	1473344	0	34.853	N.D. #
14) L3 AR-1232-4	5.122	0.000	3201462	0	80.436	N.D. #
15) L3 AR-1232-5	5.260	0.000	559126	0	13.212	N.D. #
16) L4 AR-1242-1	4.838	0.000	5748065	0	62.960	N.D. #
17) L4 AR-1242-2	4.838	0.000	5748065	0	40.104	N.D. #
18) L4 AR-1242-3	5.014	0.000	1473344	0	20.846	N.D. #
19) L4 AR-1242-4	5.122	0.000	3201462	0	45.769	N.D. #
20) L4 AR-1242-5	5.610	6.665	6589347	9506249	66.338	32.775 #
21) L5 AR-1248-1	4.838	0.000	5748065	0	79.432	N.D. #
22) L5 AR-1248-2	5.054	0.000	2421651	0	30.954	N.D. #
23) L5 AR-1248-3	5.122	6.233	3201462	9838454	29.980	22.572
24) L5 AR-1248-4	5.260	6.636	559126	10591127	4.223	20.390 #
25) L5 AR-1248-5	5.651	6.665	4365209	9506249	30.117	19.285 #
26) L6 AR-1254-1	5.610	6.598	6589347	16113302	42.724	44.237
27) L6 AR-1254-2	5.777	6.813	22033433	68646348	168.281	120.183 #
28) L6 AR-1254-3	6.168	7.189	20629974	28593835	92.333	45.860 #
29) L6 AR-1254-4	6.374	7.460	5818393	18134972	40.012	40.043
30) L6 AR-1254-5	6.786	7.877	11611960	44138718	60.982	92.962 #
31) L7 AR-1260-1	6.280	7.337	7836318	22061610	53.772	49.720
32) L7 AR-1260-2	6.467	7.586	15080248	71453783	81.907	130.352 #
33) L7 AR-1260-3	6.615	7.946	6963901	13779917	42.035	32.869
34) L7 AR-1260-4	7.079	8.175	4217506	21558453	30.340	44.681 #
35) L7 AR-1260-5	7.317	8.500	14099045	23349462	40.868	22.765 #
36) L8 AR-1262-1	6.876	7.946	2350825	13779917	16.011	13.274
37) L8 AR-1262-2	7.317	8.500	14099045	23349462	20.861	11.591 #
38) L8 AR-1262-3	7.597	8.815	6413757	32775796	27.000	26.120
39) L8 AR-1262-4	7.662	8.908	9799288	20529480	21.161	21.751
40) L8 AR-1262-5	8.151	9.575	4714035	12009904	24.243	18.906
41) L9 AR-1268-1	7.597	8.815	6413757	32775796	8.367	13.813 #

Data Path : Z:\pestpcbsrv\HPCHEM1\ECD_R\Data\PR072419\
 Data File : PR039699.D
 Signal(s) : Signal #1: ECD1A.ch Signal #2: ECD2B.ch
 Acq On : 24 Jul 2019 23:53
 Operator : SM\AJ
 Sample : K3984-05
 Misc :
 ALS Vial : 20 Sample Multiplier: 1

Instrument :
 ECD_R
 ClientSampleId :
 S8-08-S

Integration File signal 1: autoint1.e
 Integration File signal 2: autoint2.e
 Quant Time: Jul 25 01:47:06 2019
 Quant Method : Z:\pestpcbsrv\HPCHEM1\ECD_R\Method\PR072219.M
 Quant Title : GC EXTRACTABLES
 QLast Update : Mon Jul 22 14:03:19 2019
 Response via : Initial Calibration
 Integrator: ChemStation

Volume Inj. : 2 µl
 Signal #1 Phase : ZB-MR1 Signal #2 Phase: ZB-MR2
 Signal #1 Info : 30Mx0.32mmx 0.50µ Signal #2 Info : 30M x 0.32mm x 0.25µm

	Compound	RT#1	RT#2	Resp#1	Resp#2	ng/ml	ng/ml
42)	L9 AR-1268-2	7.662	8.908	9799288	20529480	13.958	9.247 #
43)	L9 AR-1268-3	7.863	0.000	5738252	0	10.326	N.D. #
44)	L9 AR-1268-4	8.151	9.575	4714035	12009904	20.461	16.196
45)	L9 AR-1268-5	8.440	9.993	3419609	15156204	2.007	2.591 #

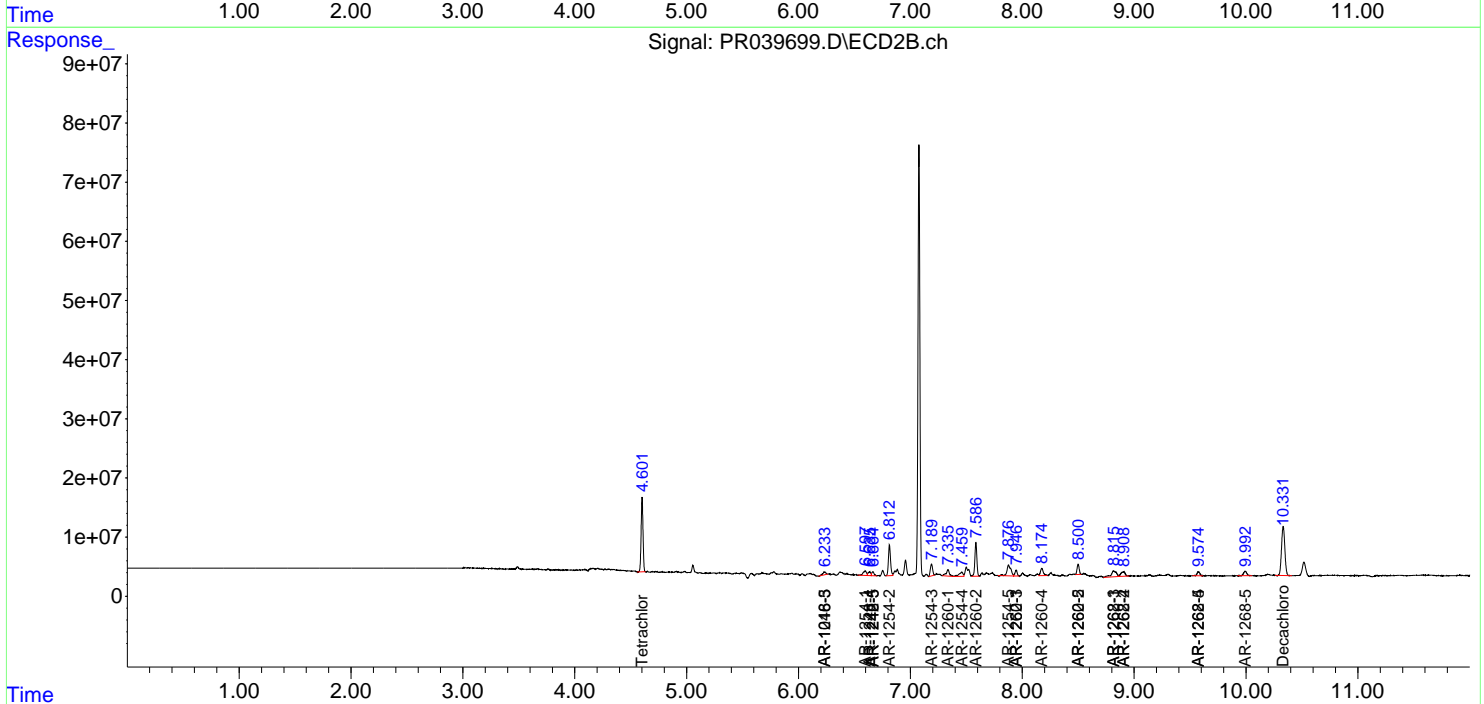
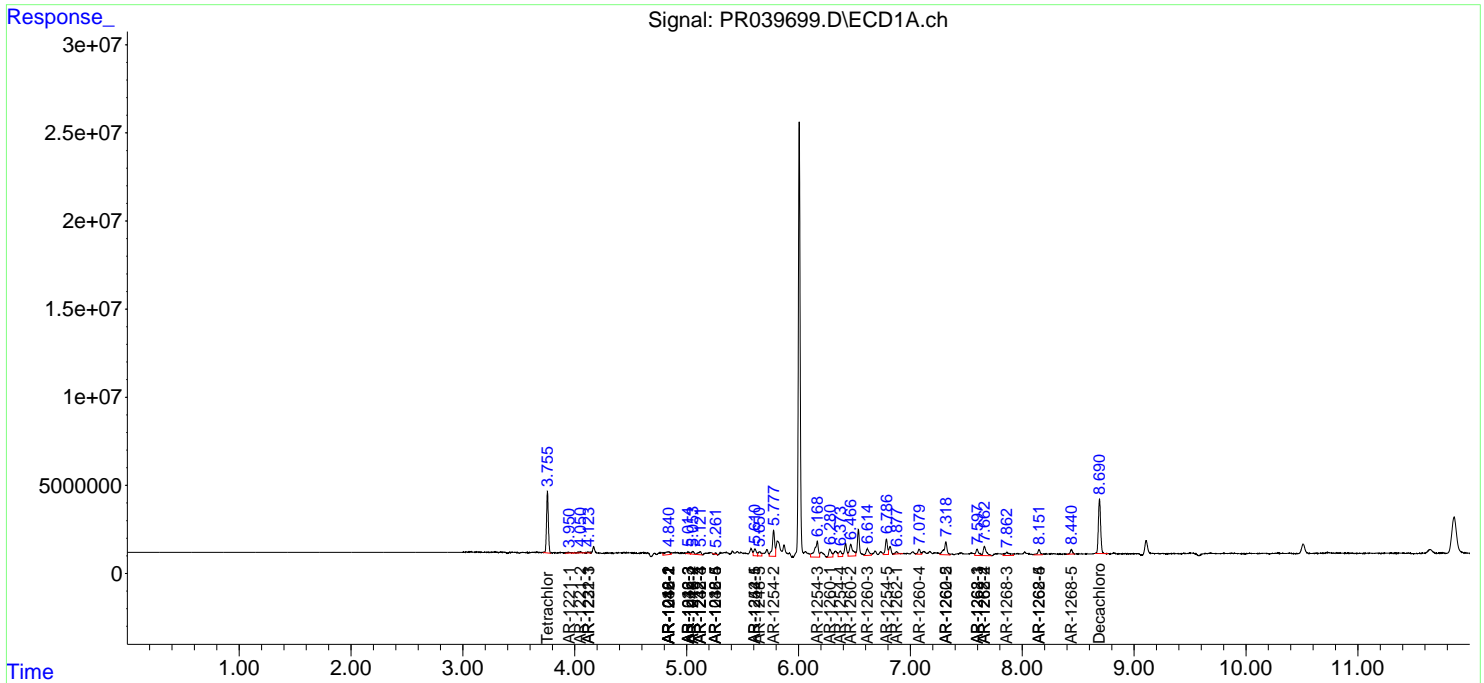
(f)=RT Delta > 1/2 Window (#)=Amounts differ by > 25% (m)=manual int.

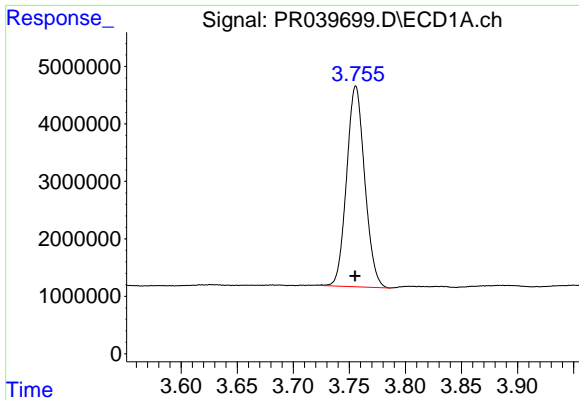
Data Path : Z:\pestpcbsrv\HPCHEM1\ECD_R\Data\PR072419\
 Data File : PR039699.D
 Signal(s) : Signal #1: ECD1A.ch Signal #2: ECD2B.ch
 Acq On : 24 Jul 2019 23:53
 Operator : SM\AJ
 Sample : K3984-05
 Misc :
 ALS Vial : 20 Sample Multiplier: 1

Instrument :
 ECD_R
 ClientSampled :
 S8-08-S

Integration File signal 1: autoint1.e
 Integration File signal 2: autoint2.e
 Quant Time: Jul 25 01:47:06 2019
 Quant Method : Z:\pestpcbsrv\HPCHEM1\ECD_R\Method\PR072219.M
 Quant Title : GC EXTRACTABLES
 QLast Update : Mon Jul 22 14:03:19 2019
 Response via : Initial Calibration
 Integrator: ChemStation

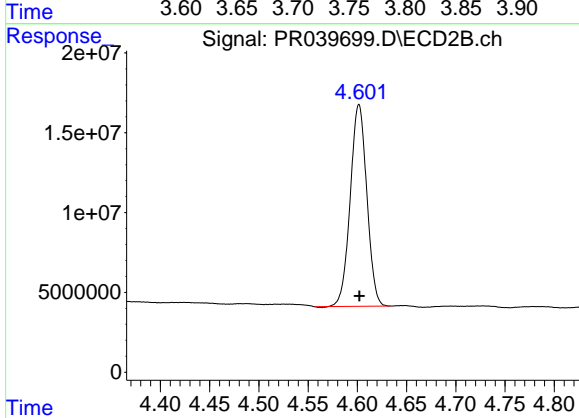
Volume Inj. : 2 µl
 Signal #1 Phase : ZB-MR1 Signal #2 Phase: ZB-MR2
 Signal #1 Info : 30Mx0.32mmx 0.50µ Signal #2 Info : 30M x 0.32mm x 0.25µm



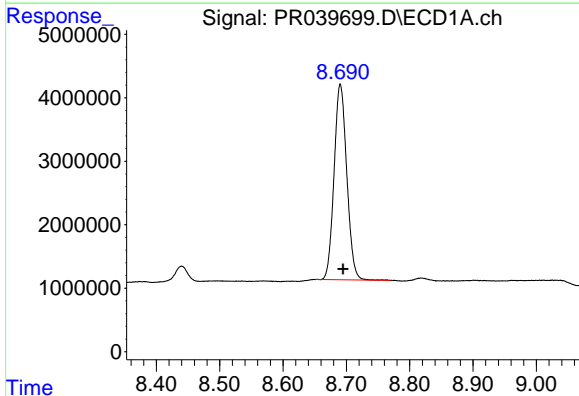


#1 Tetrachloro-m-xylene
 R.T.: 3.756 min
 Delta R.T.: 0.000 min
 Response: 39356183
 Conc: 16.40 ng/ml

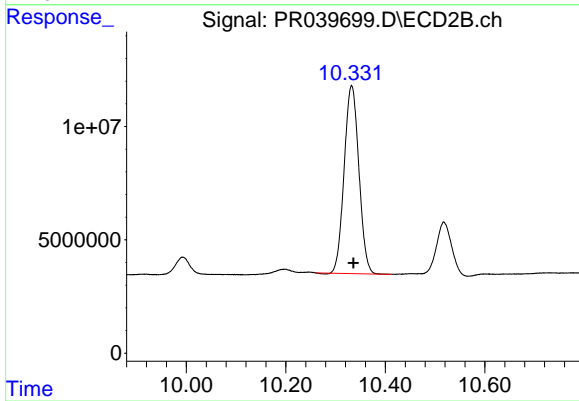
Instrument :
 ECD_R
 ClientSampleId :
 S8-08-S



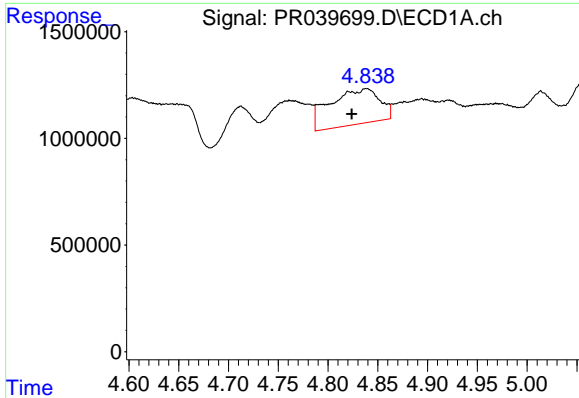
#1 Tetrachloro-m-xylene
 R.T.: 4.602 min
 Delta R.T.: 0.000 min
 Response: 148194793
 Conc: 14.78 ng/ml



#2 Decachlorobiphenyl
 R.T.: 8.691 min
 Delta R.T.: -0.004 min
 Response: 42860686
 Conc: 17.25 ng/ml



#2 Decachlorobiphenyl
 R.T.: 10.332 min
 Delta R.T.: -0.003 min
 Response: 170057896
 Conc: 18.11 ng/ml



#3 AR-1016-1

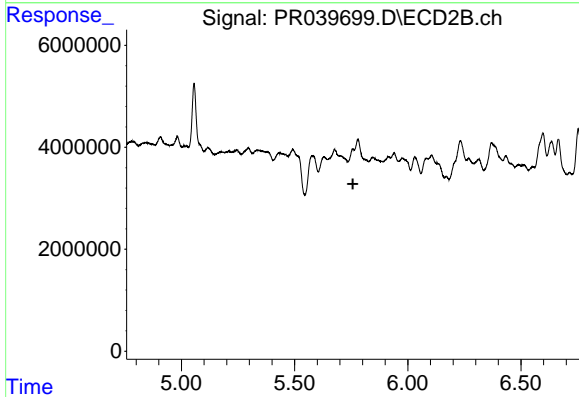
R.T.: 4.838 min

Delta R.T.: 0.015 min

Response: 5748065

Conc: 65.38 ng/ml

Instrument :
ECD_R
ClientSampleId :
S8-08-S



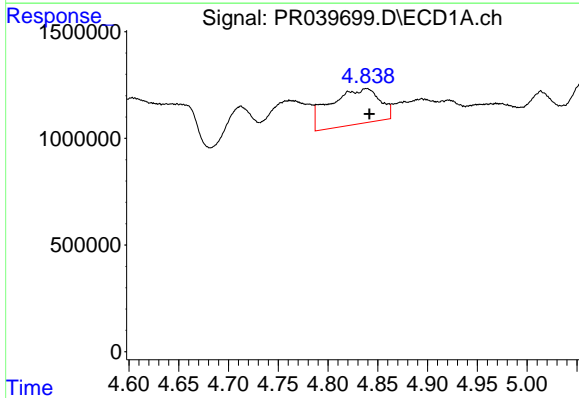
#3 AR-1016-1

R.T.: 0.000 min

Exp R.T. : 5.757 min

Response: 0

Conc: N.D.



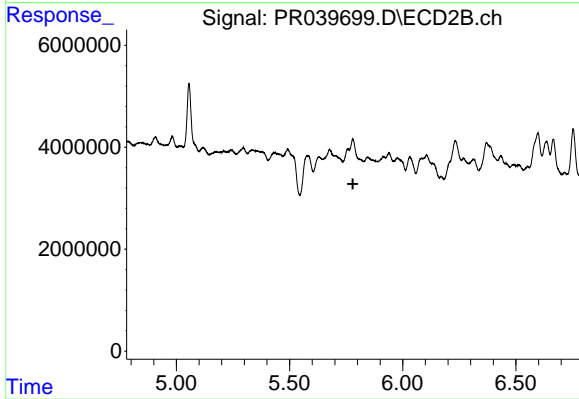
#4 AR-1016-2

R.T.: 4.838 min

Delta R.T.: -0.003 min

Response: 5748065

Conc: 39.68 ng/ml



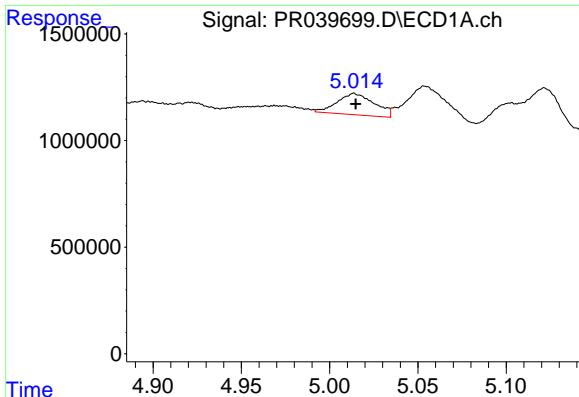
#4 AR-1016-2

R.T.: 0.000 min

Exp R.T. : 5.780 min

Response: 0

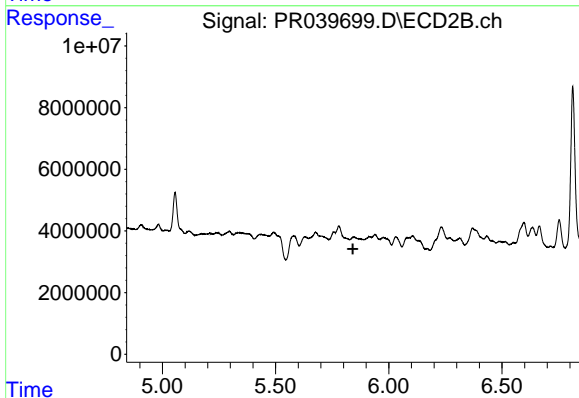
Conc: N.D.



#5 AR-1016-3

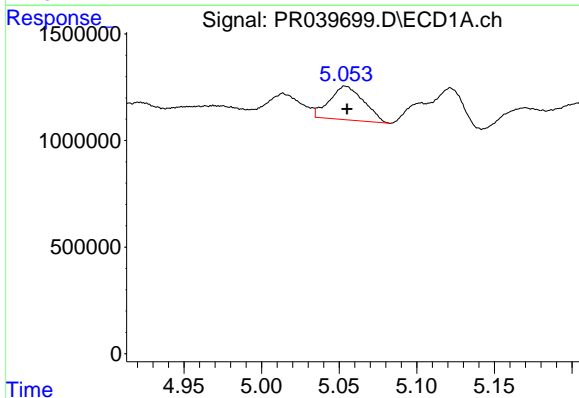
R.T.: 5.014 min
 Delta R.T.: 0.000 min
 Response: 1473344
 Conc: 21.21 ng/ml

Instrument :
 ECD_R
 ClientSampled :
 S8-08-S



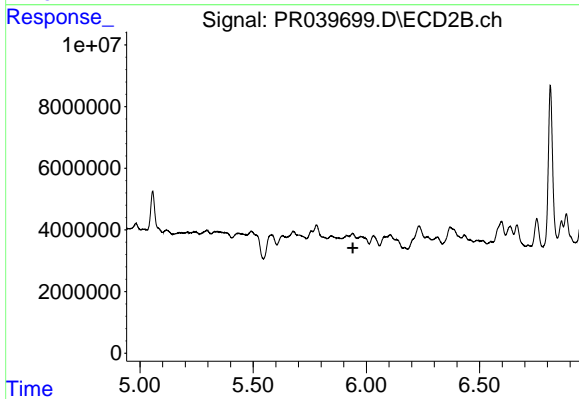
#5 AR-1016-3

R.T.: 0.000 min
 Exp R.T. : 5.842 min
 Response: 0
 Conc: N.D.



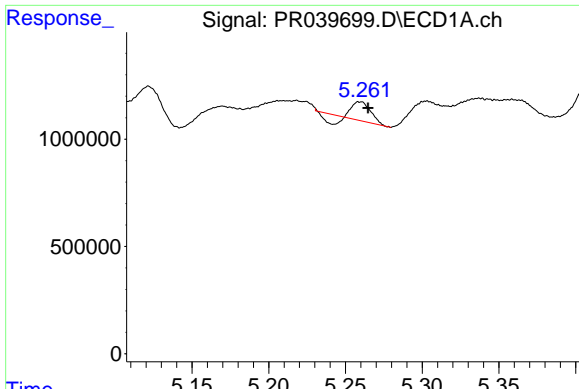
#6 AR-1016-4

R.T.: 5.054 min
 Delta R.T.: 0.000 min
 Response: 2421651
 Conc: 43.02 ng/ml



#6 AR-1016-4

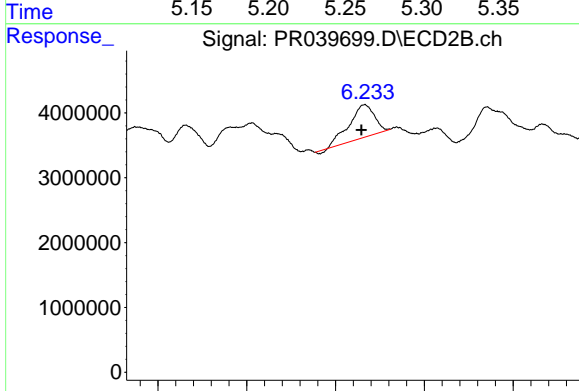
R.T.: 0.000 min
 Exp R.T. : 5.941 min
 Response: 0
 Conc: N.D.



#7 AR-1016-5

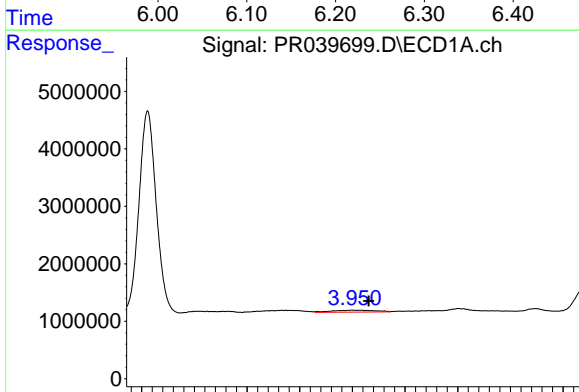
R.T.: 5.260 min
 Delta R.T.: -0.005 min
 Response: 559126
 Conc: 7.45 ng/ml

Instrument :
 ECD_R
 ClientSampleId :
 S8-08-S



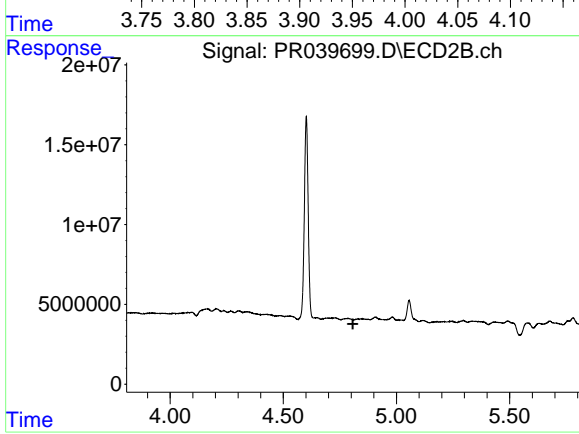
#7 AR-1016-5

R.T.: 6.233 min
 Delta R.T.: 0.004 min
 Response: 9838454
 Conc: 39.16 ng/ml



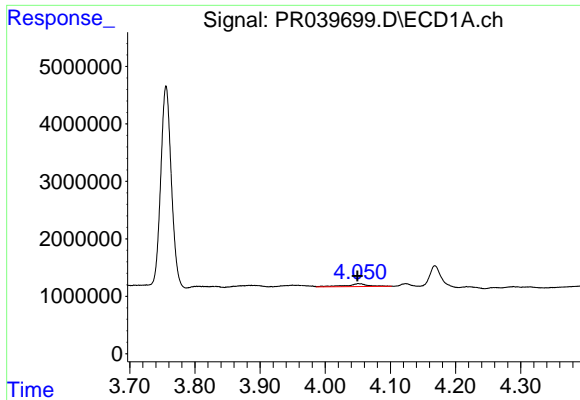
#8 AR-1221-1

R.T.: 3.950 min
 Delta R.T.: -0.015 min
 Response: 929438
 Conc: 28.56 ng/ml



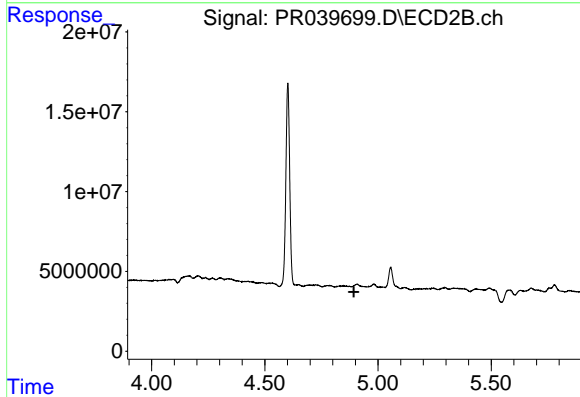
#8 AR-1221-1

R.T.: 0.000 min
 Exp R.T. : 4.808 min
 Response: 0
 Conc: N.D.

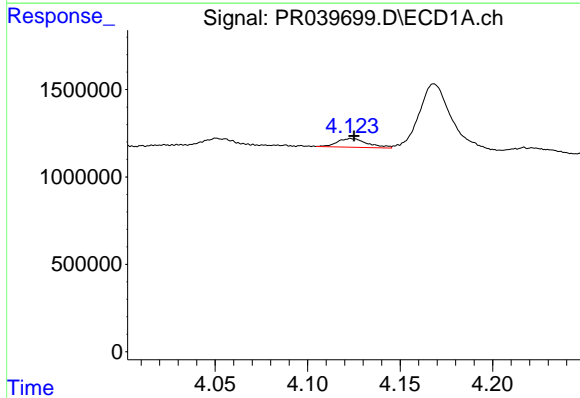


#9 AR-1221-2
 R.T.: 4.051 min
 Delta R.T.: 0.001 min
 Response: 1176434
 Conc: 48.35 ng/ml

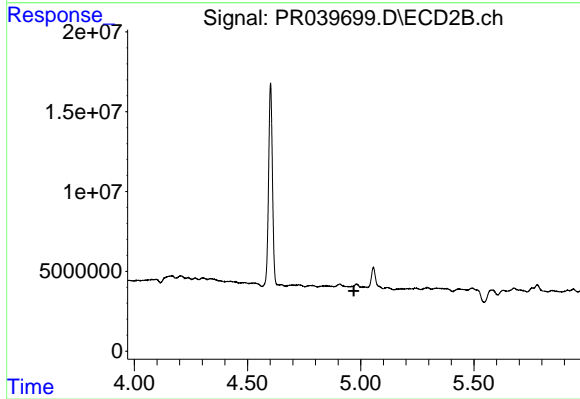
Instrument :
 ECD_R
ClientSampled :
 S8-08-S



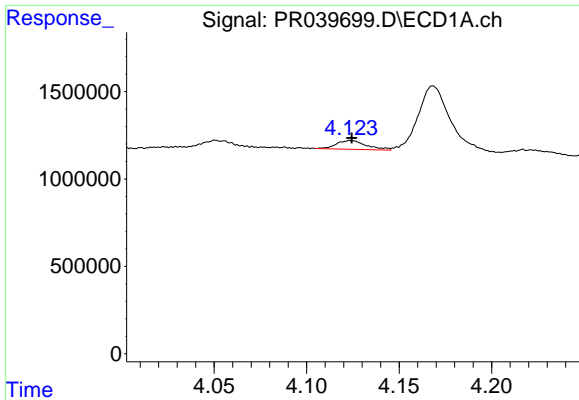
#9 AR-1221-2
 R.T.: 0.000 min
 Exp R.T. : 4.893 min
 Response: 0
 Conc: N.D.



#10 AR-1221-3
 R.T.: 4.124 min
 Delta R.T.: -0.001 min
 Response: 561725
 Conc: 7.17 ng/ml

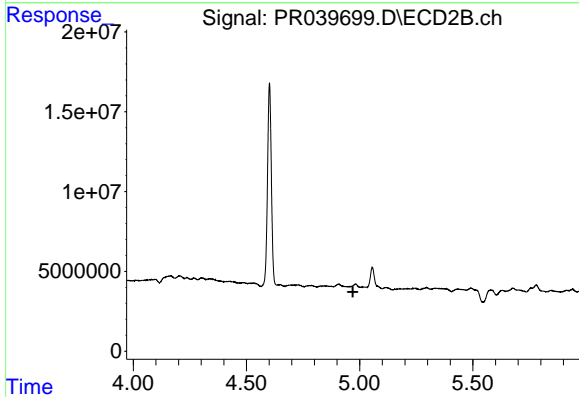


#10 AR-1221-3
 R.T.: 0.000 min
 Exp R.T. : 4.970 min
 Response: 0
 Conc: N.D.

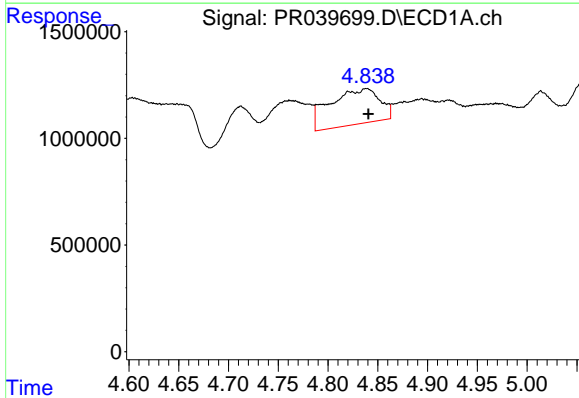


#11 AR-1232-1
 R.T.: 4.124 min
 Delta R.T.: 0.000 min
 Response: 561725
 Conc: 7.19 ng/ml

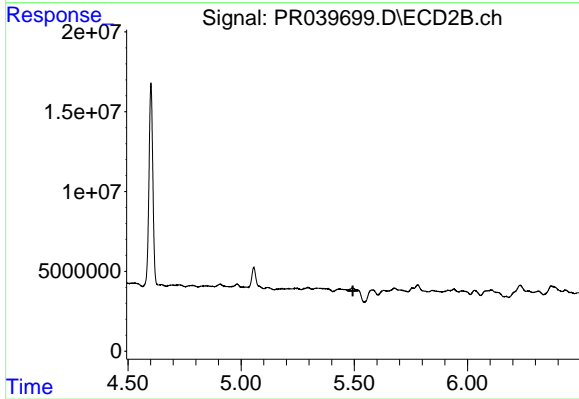
Instrument :
 ECD_R
 ClientSampled :
 S8-08-S



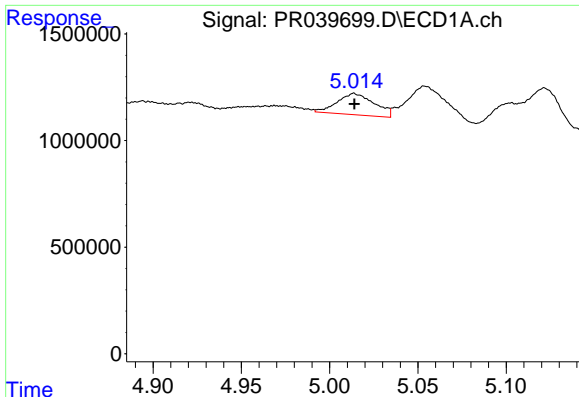
#11 AR-1232-1
 R.T.: 0.000 min
 Exp R.T. : 4.970 min
 Response: 0
 Conc: N.D.



#12 AR-1232-2
 R.T.: 4.838 min
 Delta R.T.: -0.002 min
 Response: 5748065
 Conc: 61.15 ng/ml



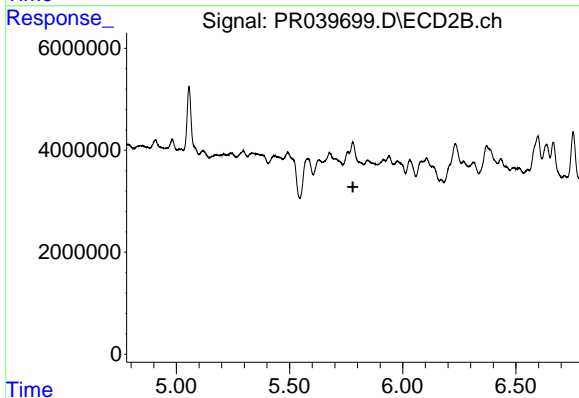
#12 AR-1232-2
 R.T.: 0.000 min
 Exp R.T. : 5.494 min
 Response: 0
 Conc: N.D.



#13 AR-1232-3

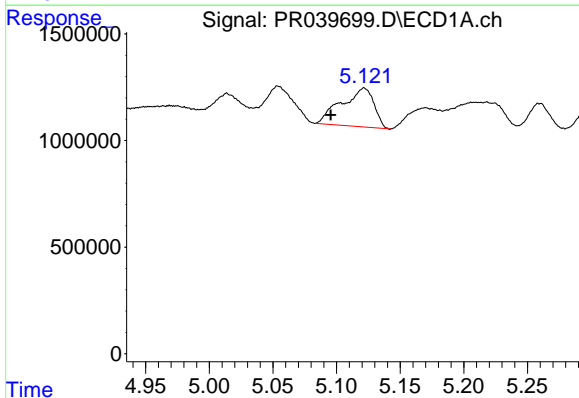
R.T.: 5.014 min
 Delta R.T.: 0.000 min
 Response: 1473344
 Conc: 34.85 ng/ml

Instrument :
 ECD_R
 ClientSampleId :
 S8-08-S



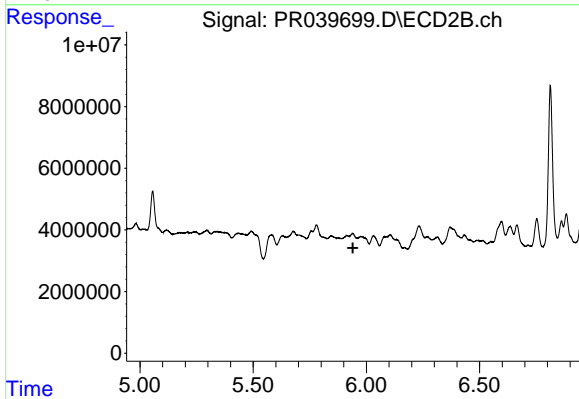
#13 AR-1232-3

R.T.: 0.000 min
 Exp R.T. : 5.780 min
 Response: 0
 Conc: N.D.



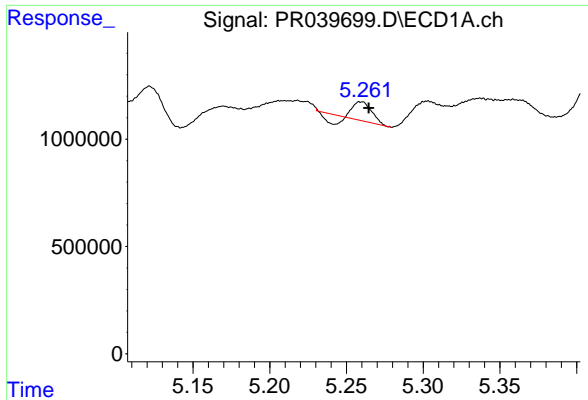
#14 AR-1232-4

R.T.: 5.122 min
 Delta R.T.: 0.026 min
 Response: 3201462
 Conc: 80.44 ng/ml



#14 AR-1232-4

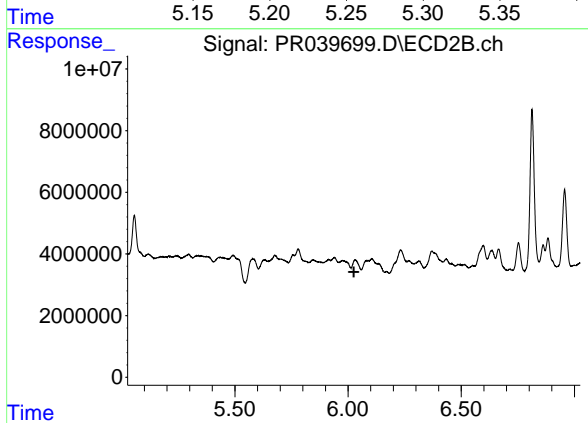
R.T.: 0.000 min
 Exp R.T. : 5.940 min
 Response: 0
 Conc: N.D.



#15 AR-1232-5

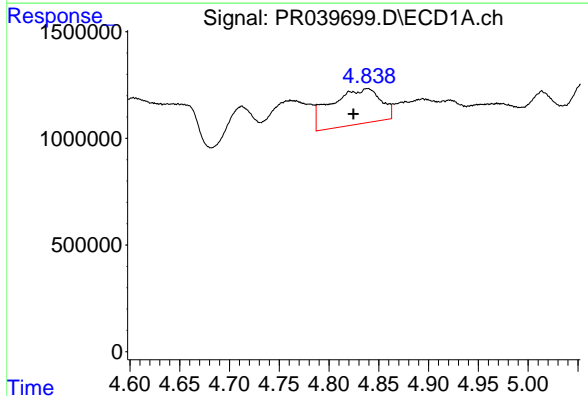
R.T.: 5.260 min
 Delta R.T.: -0.005 min
 Response: 559126
 Conc: 13.21 ng/ml

Instrument :
 ECD_R
 ClientSampled :
 S8-08-S



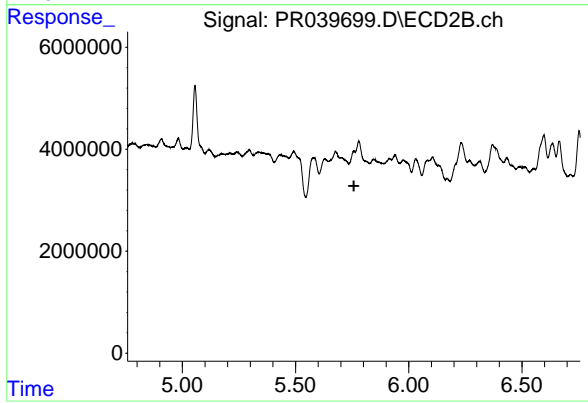
#15 AR-1232-5

R.T.: 0.000 min
 Exp R.T. : 6.026 min
 Response: 0
 Conc: N.D.



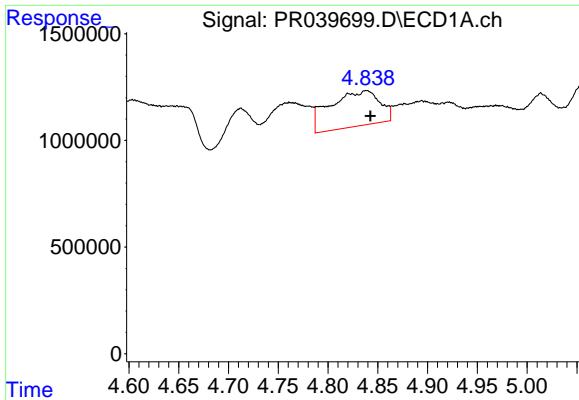
#16 AR-1242-1

R.T.: 4.838 min
 Delta R.T.: 0.014 min
 Response: 5748065
 Conc: 62.96 ng/ml



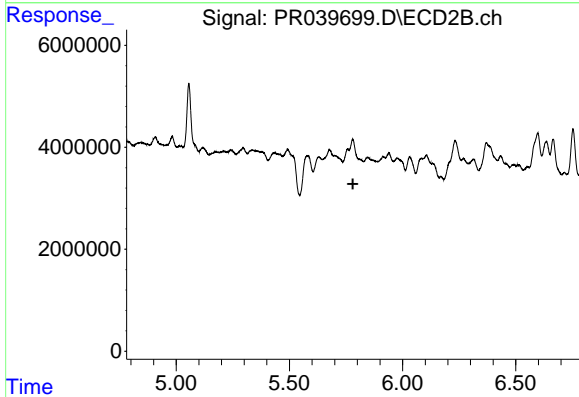
#16 AR-1242-1

R.T.: 0.000 min
 Exp R.T. : 5.758 min
 Response: 0
 Conc: N.D.

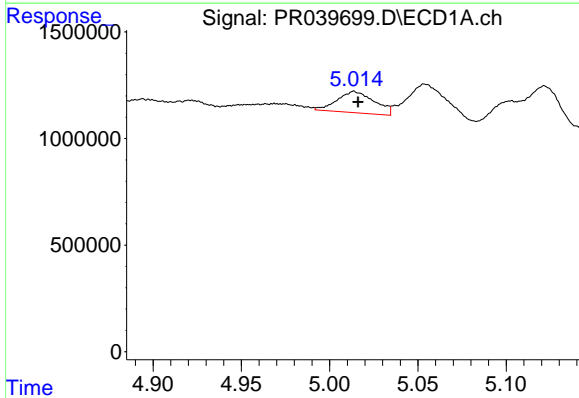


#17 AR-1242-2
 R.T.: 4.838 min
 Delta R.T.: -0.004 min
 Response: 5748065
 Conc: 40.10 ng/ml

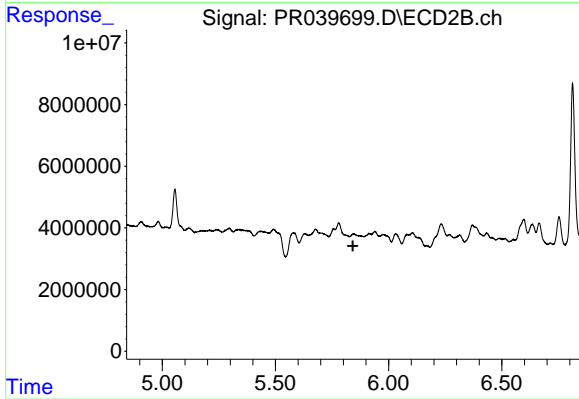
Instrument :
 ECD_R
 ClientSampleId :
 S8-08-S



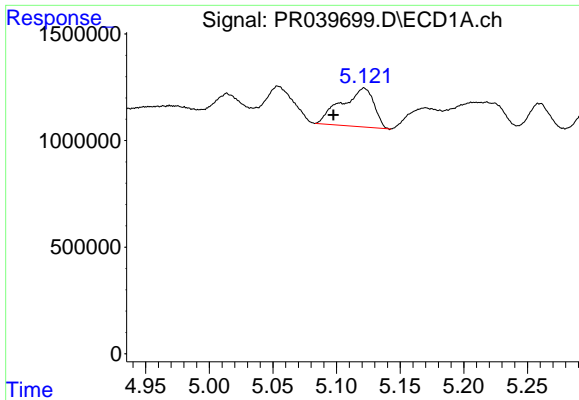
#17 AR-1242-2
 R.T.: 0.000 min
 Exp R.T. : 5.780 min
 Response: 0
 Conc: N.D.



#18 AR-1242-3
 R.T.: 5.014 min
 Delta R.T.: -0.002 min
 Response: 1473344
 Conc: 20.85 ng/ml

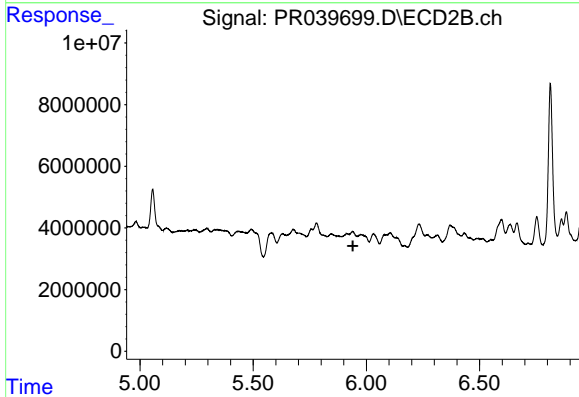


#18 AR-1242-3
 R.T.: 0.000 min
 Exp R.T. : 5.842 min
 Response: 0
 Conc: N.D.

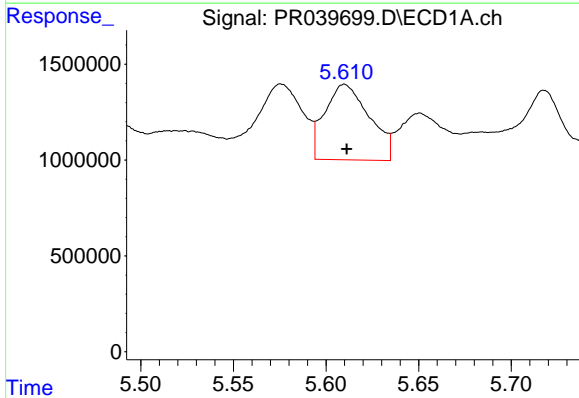


#19 AR-1242-4
 R.T.: 5.122 min
 Delta R.T.: 0.024 min
 Response: 3201462
 Conc: 45.77 ng/ml

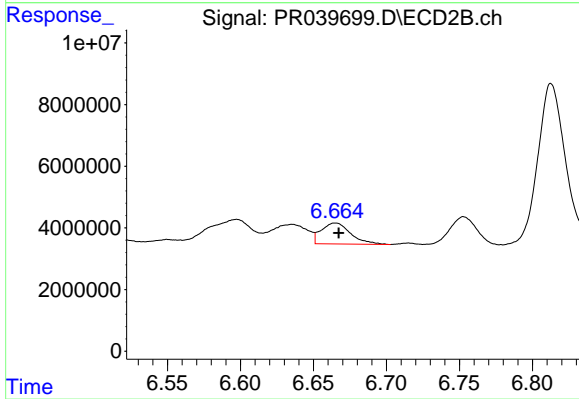
Instrument :
 ECD_R
ClientSampled :
 S8-08-S



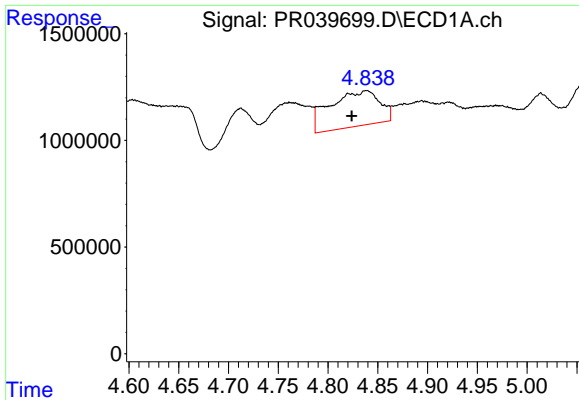
#19 AR-1242-4
 R.T.: 0.000 min
 Exp R.T. : 5.941 min
 Response: 0
 Conc: N.D.



#20 AR-1242-5
 R.T.: 5.610 min
 Delta R.T.: -0.001 min
 Response: 6589347
 Conc: 66.34 ng/ml

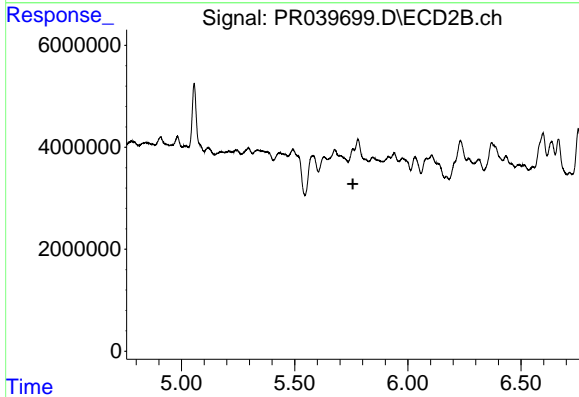


#20 AR-1242-5
 R.T.: 6.665 min
 Delta R.T.: -0.002 min
 Response: 9506249
 Conc: 32.77 ng/ml

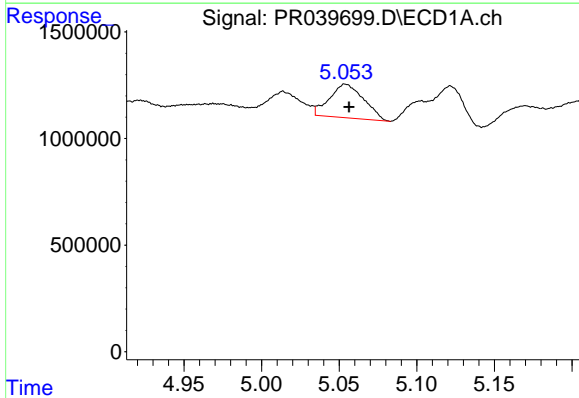


#21 AR-1248-1
 R.T.: 4.838 min
 Delta R.T.: 0.015 min
 Response: 5748065
 Conc: 79.43 ng/ml

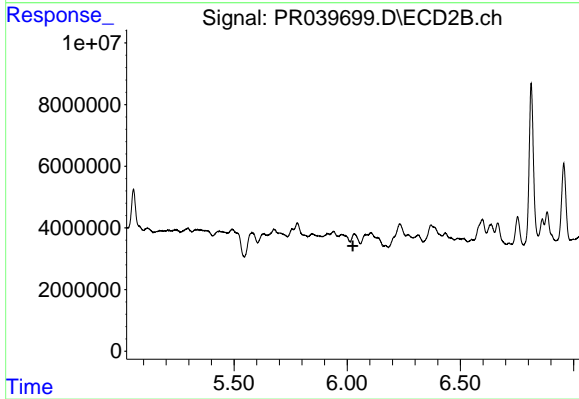
Instrument :
 ECD_R
ClientSampled :
 S8-08-S



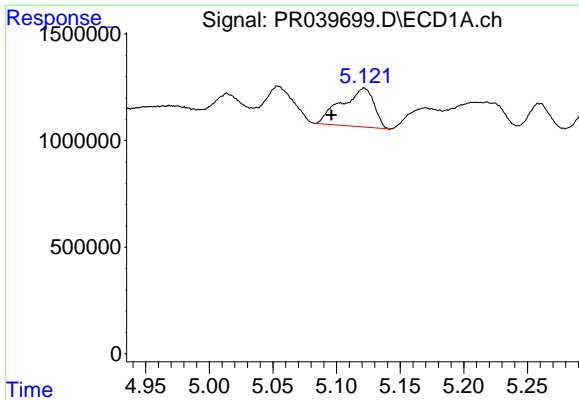
#21 AR-1248-1
 R.T.: 0.000 min
 Exp R.T. : 5.757 min
 Response: 0
 Conc: N.D.



#22 AR-1248-2
 R.T.: 5.054 min
 Delta R.T.: -0.002 min
 Response: 2421651
 Conc: 30.95 ng/ml

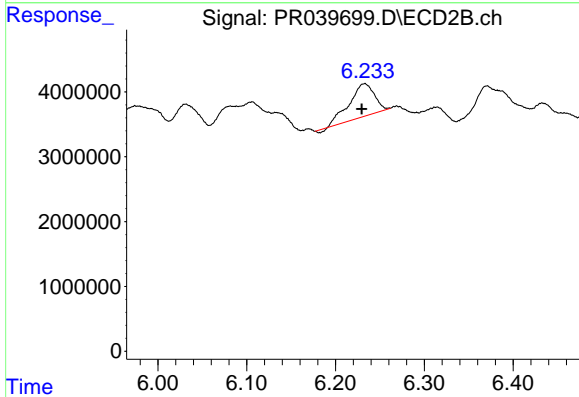


#22 AR-1248-2
 R.T.: 0.000 min
 Exp R.T. : 6.025 min
 Response: 0
 Conc: N.D.

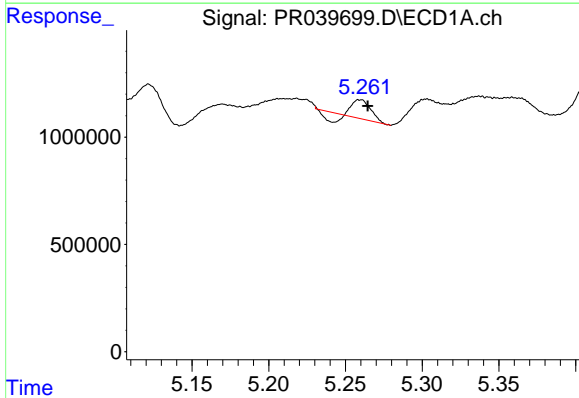


#23 AR-1248-3
 R.T.: 5.122 min
 Delta R.T.: 0.026 min
 Response: 3201462
 Conc: 29.98 ng/ml

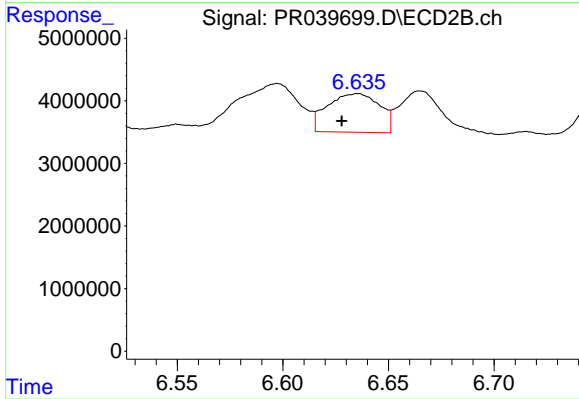
Instrument :
 ECD_R
 ClientSampleId :
 S8-08-S



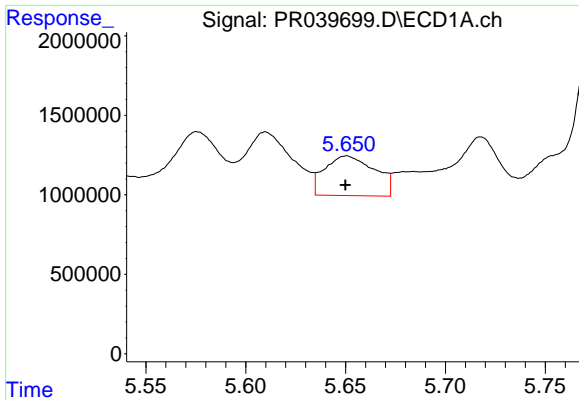
#23 AR-1248-3
 R.T.: 6.233 min
 Delta R.T.: 0.004 min
 Response: 9838454
 Conc: 22.57 ng/ml



#24 AR-1248-4
 R.T.: 5.260 min
 Delta R.T.: -0.005 min
 Response: 559126
 Conc: 4.22 ng/ml



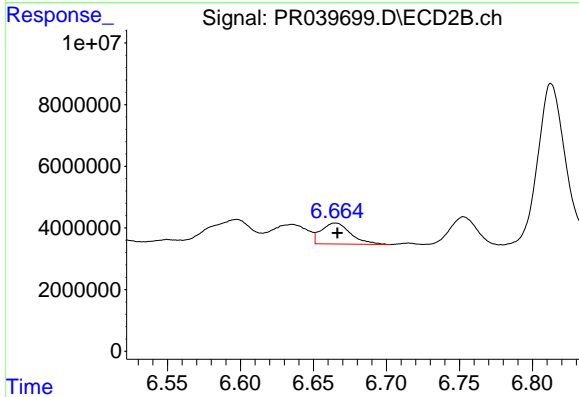
#24 AR-1248-4
 R.T.: 6.636 min
 Delta R.T.: 0.008 min
 Response: 10591127
 Conc: 20.39 ng/ml



#25 AR-1248-5

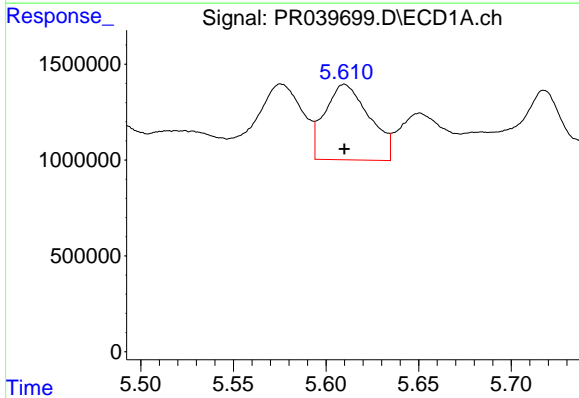
R.T.: 5.651 min
 Delta R.T.: 0.000 min
 Response: 4365209
 Conc: 30.12 ng/ml

Instrument :
 ECD_R
ClientSampled :
 S8-08-S



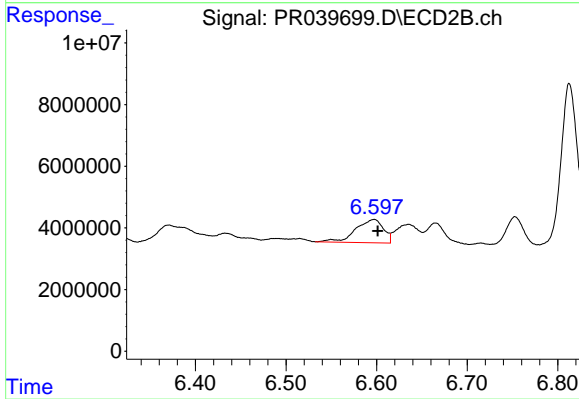
#25 AR-1248-5

R.T.: 6.665 min
 Delta R.T.: -0.002 min
 Response: 9506249
 Conc: 19.29 ng/ml



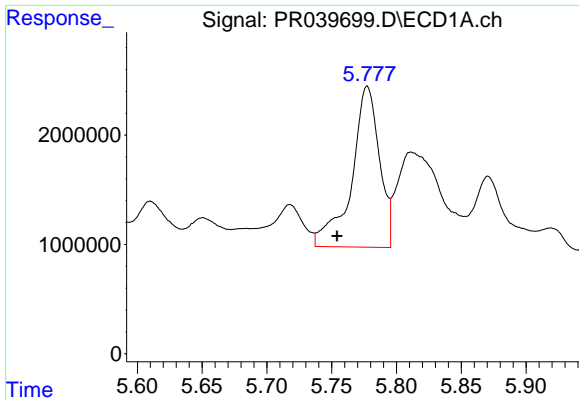
#26 AR-1254-1

R.T.: 5.610 min
 Delta R.T.: 0.000 min
 Response: 6589347
 Conc: 42.72 ng/ml



#26 AR-1254-1

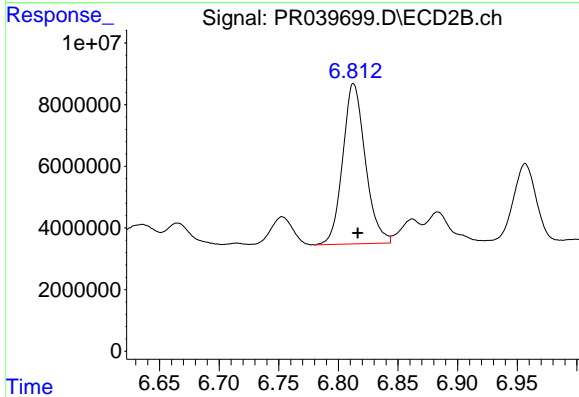
R.T.: 6.598 min
 Delta R.T.: -0.004 min
 Response: 16113302
 Conc: 44.24 ng/ml



#27 AR-1254-2

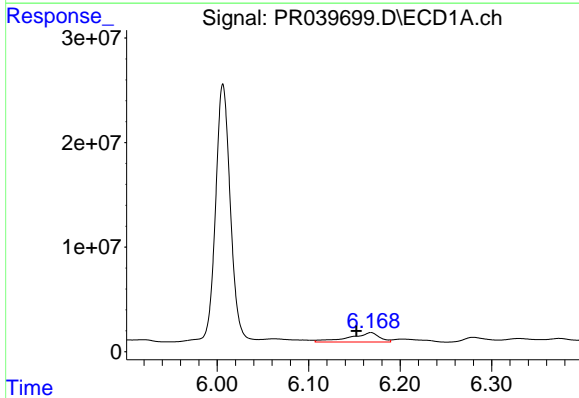
R.T.: 5.777 min
 Delta R.T.: 0.023 min
 Response: 22033433
 Conc: 168.28 ng/ml

Instrument :
 ECD_R
ClientSampled :
 S8-08-S



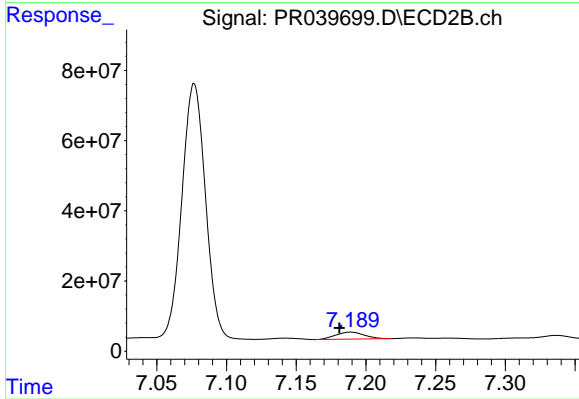
#27 AR-1254-2

R.T.: 6.813 min
 Delta R.T.: -0.003 min
 Response: 68646348
 Conc: 120.18 ng/ml



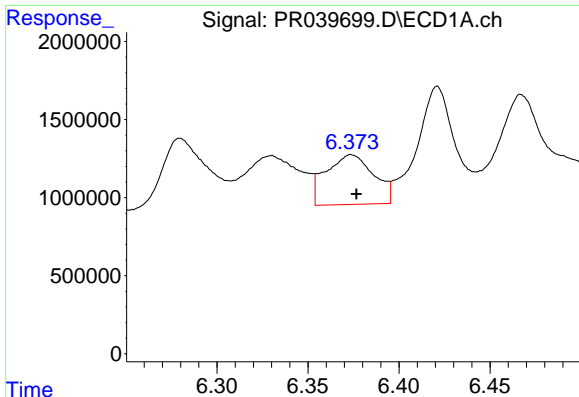
#28 AR-1254-3

R.T.: 6.168 min
 Delta R.T.: 0.016 min
 Response: 20629974
 Conc: 92.33 ng/ml



#28 AR-1254-3

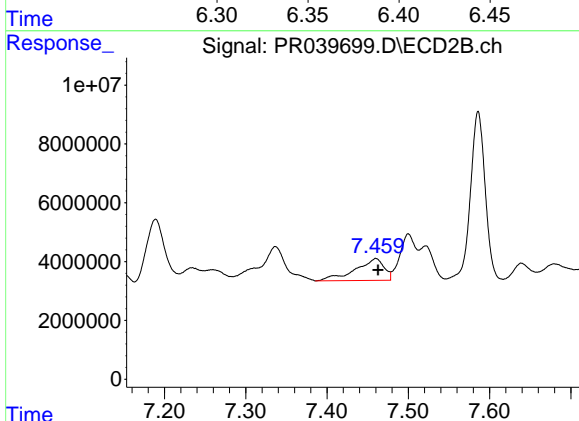
R.T.: 7.189 min
 Delta R.T.: 0.008 min
 Response: 28593835
 Conc: 45.86 ng/ml



#29 AR-1254-4

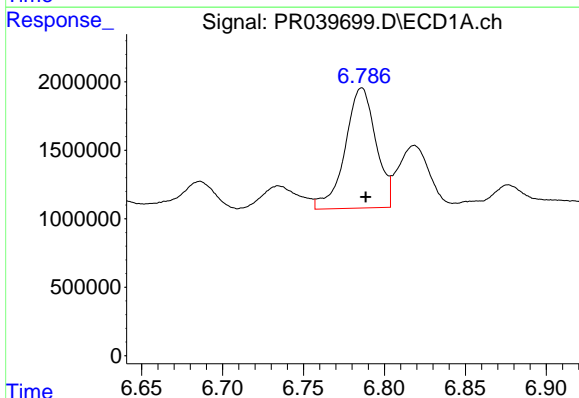
R.T.: 6.374 min
 Delta R.T.: -0.003 min
 Response: 5818393
 Conc: 40.01 ng/ml

Instrument :
 ECD_R
 ClientSampleId :
 S8-08-S



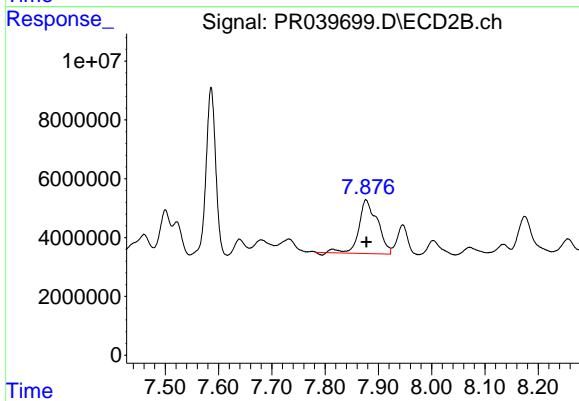
#29 AR-1254-4

R.T.: 7.460 min
 Delta R.T.: -0.003 min
 Response: 18134972
 Conc: 40.04 ng/ml



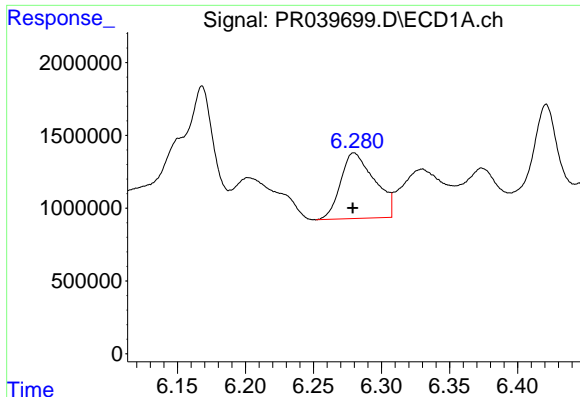
#30 AR-1254-5

R.T.: 6.786 min
 Delta R.T.: -0.003 min
 Response: 11611960
 Conc: 60.98 ng/ml



#30 AR-1254-5

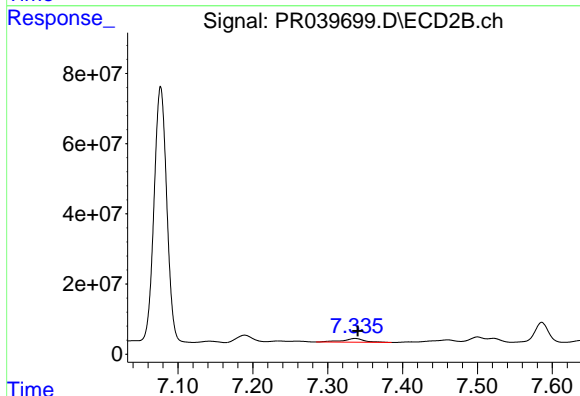
R.T.: 7.877 min
 Delta R.T.: 0.000 min
 Response: 44138718
 Conc: 92.96 ng/ml



#31 AR-1260-1

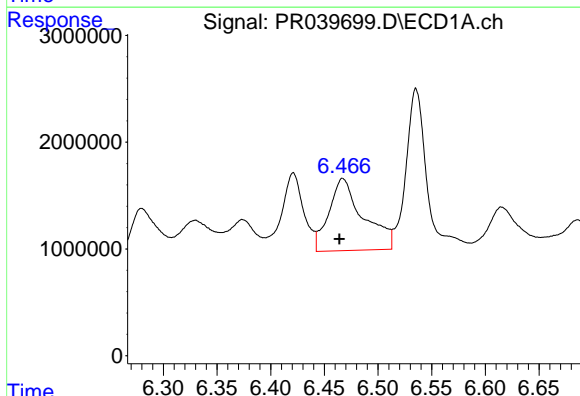
R.T.: 6.280 min
 Delta R.T.: 0.000 min
 Response: 7836318
 Conc: 53.77 ng/ml

Instrument :
 ECD_R
 ClientSampleId :
 S8-08-S



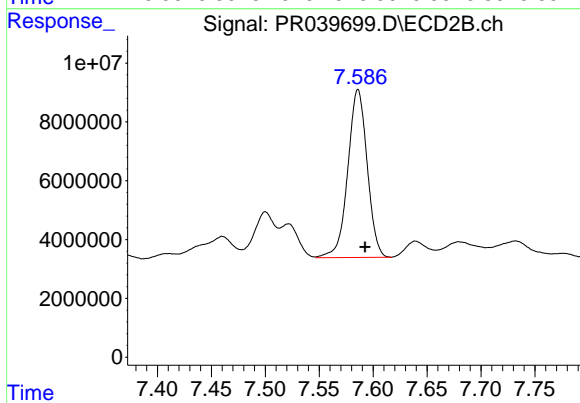
#31 AR-1260-1

R.T.: 7.337 min
 Delta R.T.: -0.004 min
 Response: 22061610
 Conc: 49.72 ng/ml



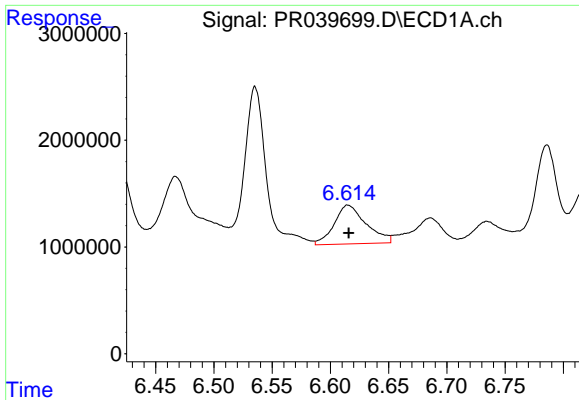
#32 AR-1260-2

R.T.: 6.467 min
 Delta R.T.: 0.003 min
 Response: 15080248
 Conc: 81.91 ng/ml



#32 AR-1260-2

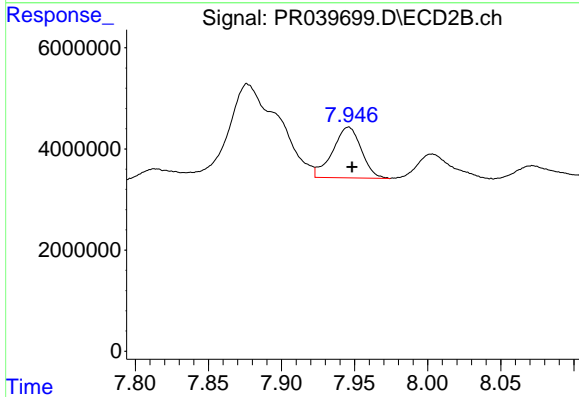
R.T.: 7.586 min
 Delta R.T.: -0.007 min
 Response: 71453783
 Conc: 130.35 ng/ml



#33 AR-1260-3

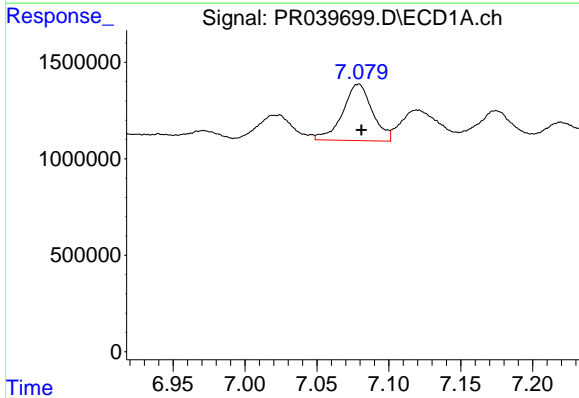
R.T.: 6.615 min
 Delta R.T.: 0.000 min
 Response: 6963901
 Conc: 42.04 ng/ml

Instrument :
 ECD_R
 ClientSampled :
 S8-08-S



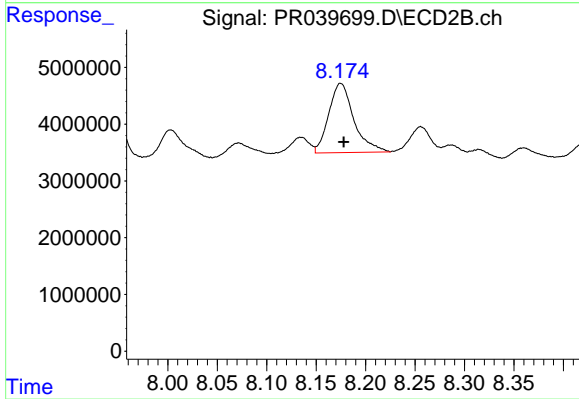
#33 AR-1260-3

R.T.: 7.946 min
 Delta R.T.: -0.002 min
 Response: 13779917
 Conc: 32.87 ng/ml



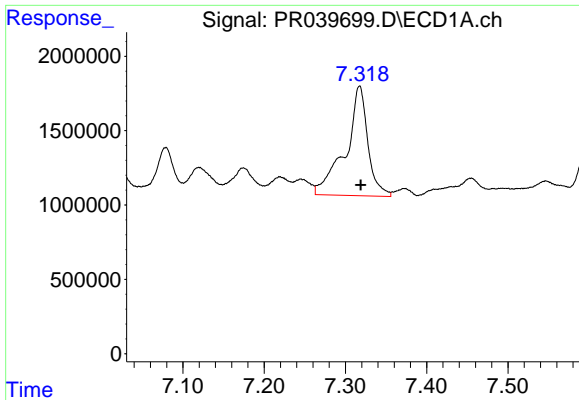
#34 AR-1260-4

R.T.: 7.079 min
 Delta R.T.: -0.002 min
 Response: 4217506
 Conc: 30.34 ng/ml



#34 AR-1260-4

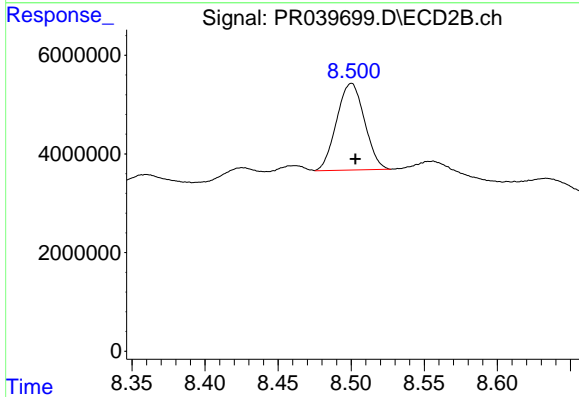
R.T.: 8.175 min
 Delta R.T.: -0.003 min
 Response: 21558453
 Conc: 44.68 ng/ml



#35 AR-1260-5

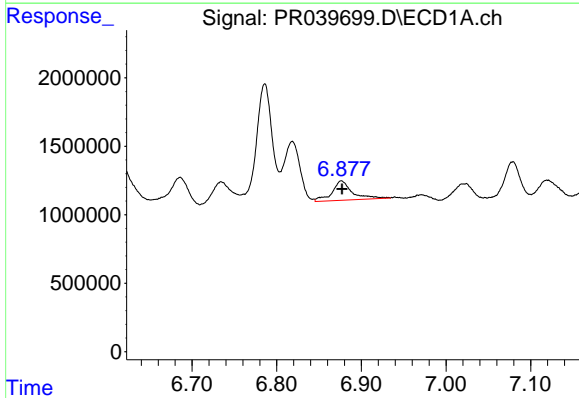
R.T.: 7.317 min
Delta R.T.: -0.002 min
Response: 14099045
Conc: 40.87 ng/ml

Instrument :
ECD_R
ClientSampleId :
S8-08-S



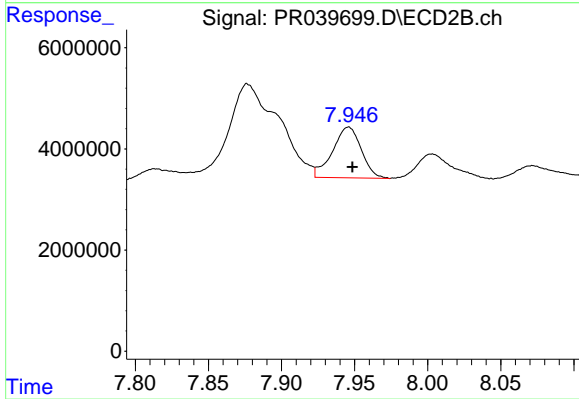
#35 AR-1260-5

R.T.: 8.500 min
Delta R.T.: -0.003 min
Response: 23349462
Conc: 22.76 ng/ml



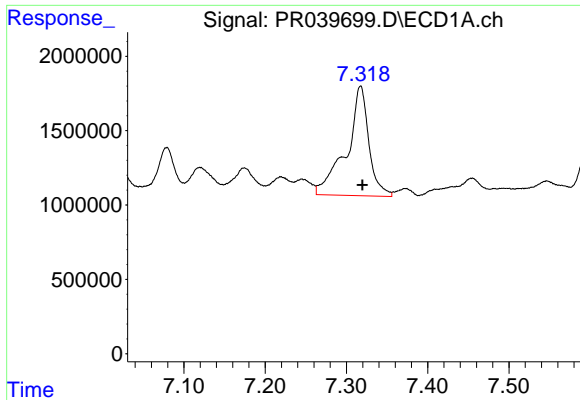
#36 AR-1262-1

R.T.: 6.876 min
Delta R.T.: 0.000 min
Response: 2350825
Conc: 16.01 ng/ml



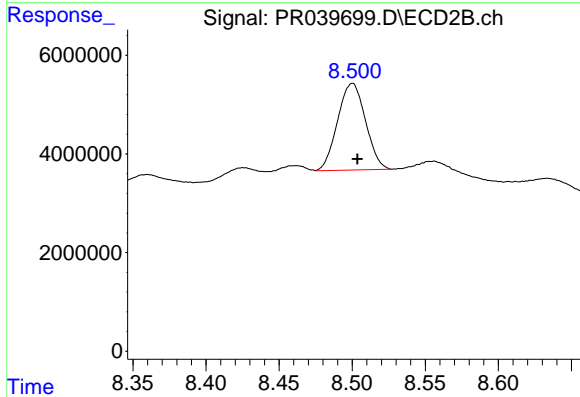
#36 AR-1262-1

R.T.: 7.946 min
Delta R.T.: -0.003 min
Response: 13779917
Conc: 13.27 ng/ml

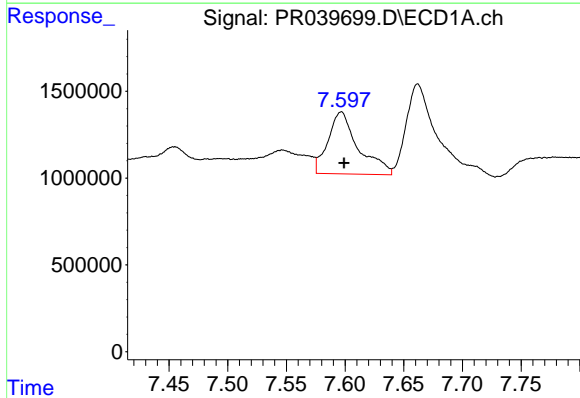


#37 AR-1262-2
 R.T.: 7.317 min
 Delta R.T.: -0.002 min
 Response: 14099045
 Conc: 20.86 ng/ml

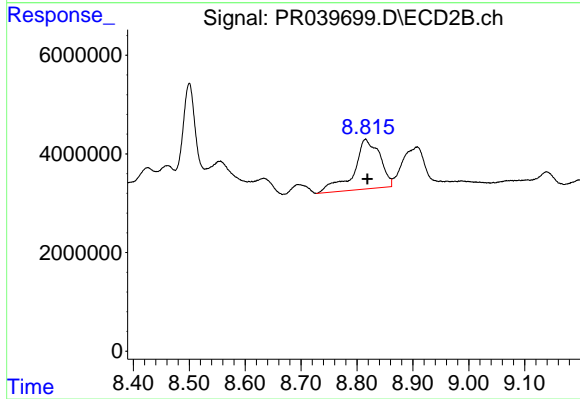
Instrument :
 ECD_R
 ClientSampleId :
 S8-08-S



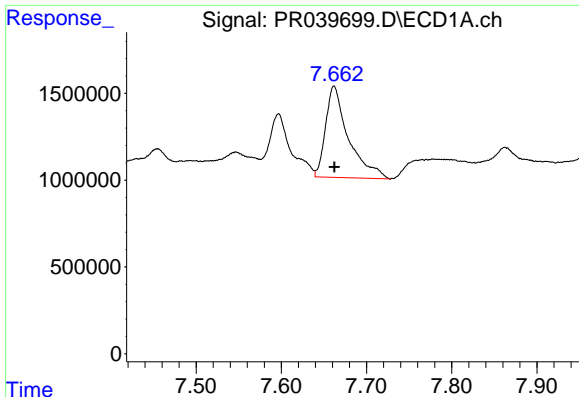
#37 AR-1262-2
 R.T.: 8.500 min
 Delta R.T.: -0.003 min
 Response: 23349462
 Conc: 11.59 ng/ml



#38 AR-1262-3
 R.T.: 7.597 min
 Delta R.T.: -0.002 min
 Response: 6413757
 Conc: 27.00 ng/ml



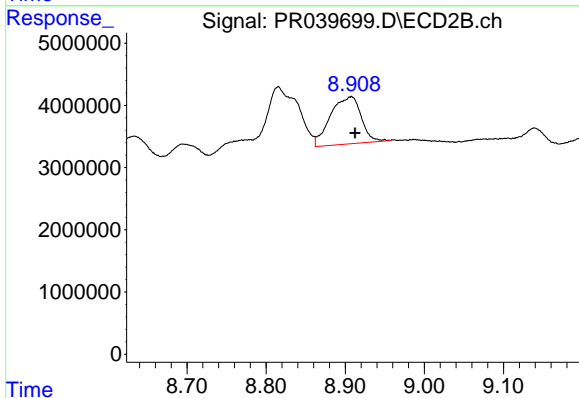
#38 AR-1262-3
 R.T.: 8.815 min
 Delta R.T.: -0.003 min
 Response: 32775796
 Conc: 26.12 ng/ml



#39 AR-1262-4

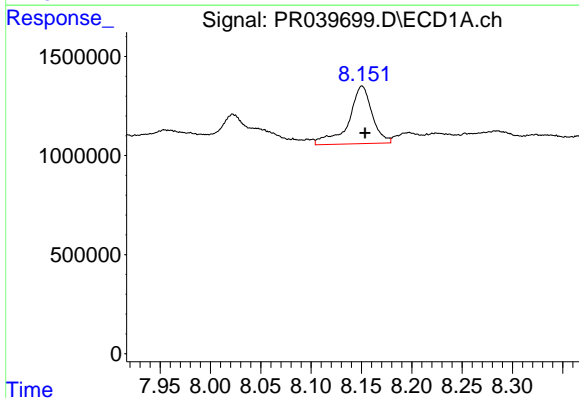
R.T.: 7.662 min
 Delta R.T.: 0.000 min
 Response: 9799288
 Conc: 21.16 ng/ml

Instrument :
 ECD_R
 ClientSampleId :
 S8-08-S



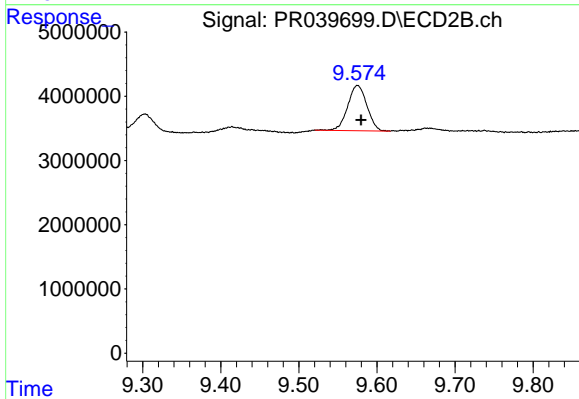
#39 AR-1262-4

R.T.: 8.908 min
 Delta R.T.: -0.005 min
 Response: 20529480
 Conc: 21.75 ng/ml



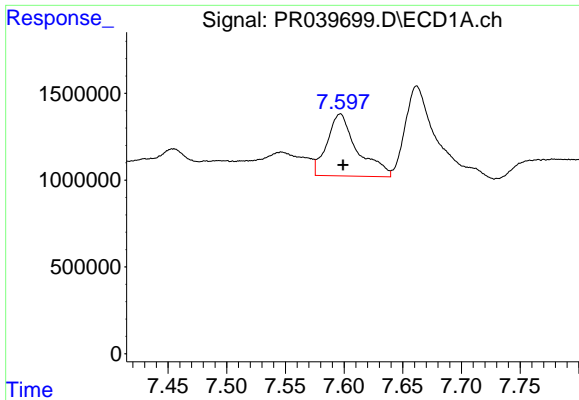
#40 AR-1262-5

R.T.: 8.151 min
 Delta R.T.: -0.003 min
 Response: 4714035
 Conc: 24.24 ng/ml



#40 AR-1262-5

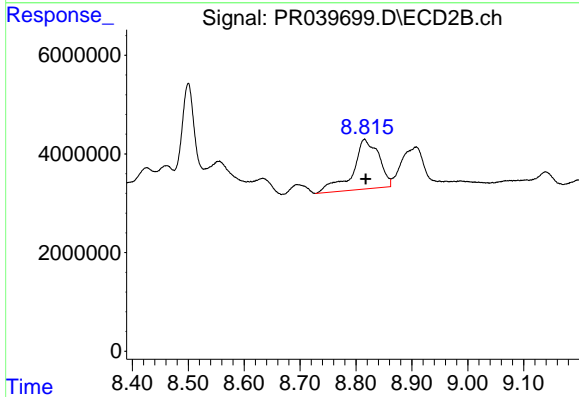
R.T.: 9.575 min
 Delta R.T.: -0.005 min
 Response: 12009904
 Conc: 18.91 ng/ml



#41 AR-1268-1

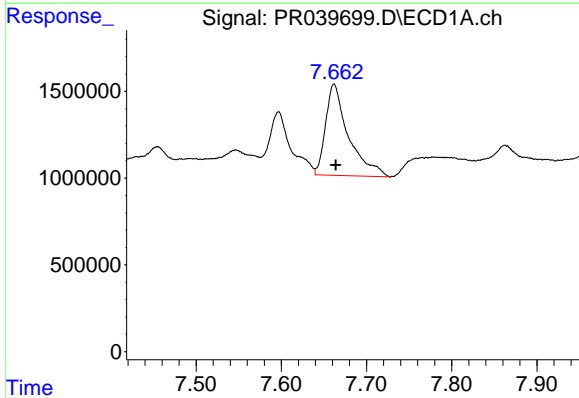
R.T.: 7.597 min
 Delta R.T.: -0.002 min
 Response: 6413757
 Conc: 8.37 ng/ml

Instrument :
 ECD_R
 ClientSampled :
 S8-08-S



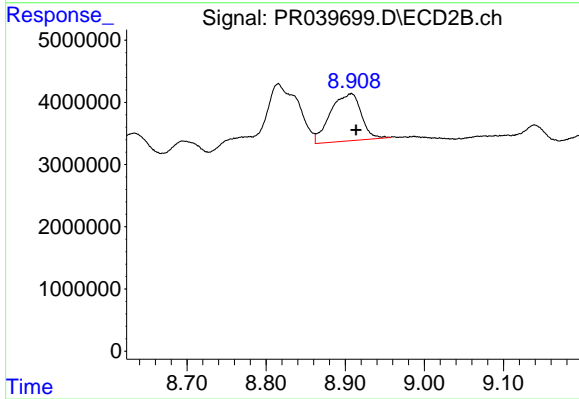
#41 AR-1268-1

R.T.: 8.815 min
 Delta R.T.: -0.002 min
 Response: 32775796
 Conc: 13.81 ng/ml



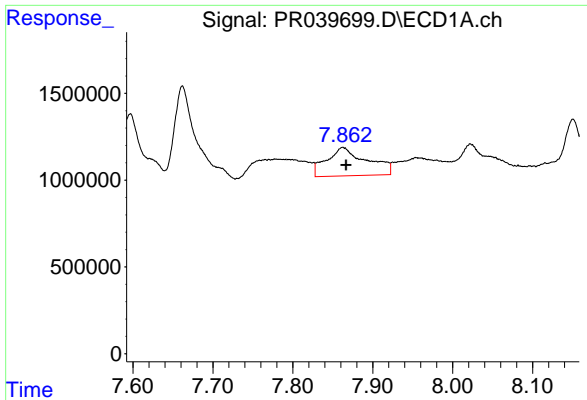
#42 AR-1268-2

R.T.: 7.662 min
 Delta R.T.: -0.002 min
 Response: 9799288
 Conc: 13.96 ng/ml



#42 AR-1268-2

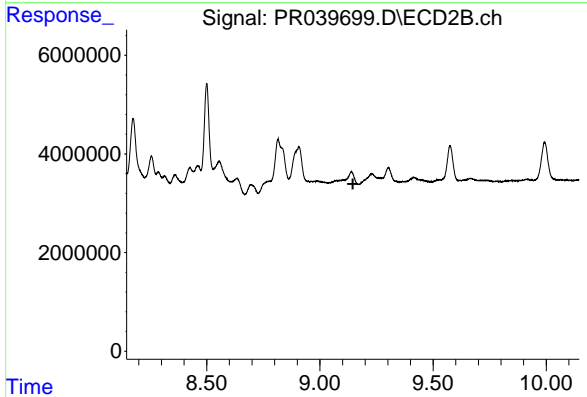
R.T.: 8.908 min
 Delta R.T.: -0.006 min
 Response: 20529480
 Conc: 9.25 ng/ml



#43 AR-1268-3

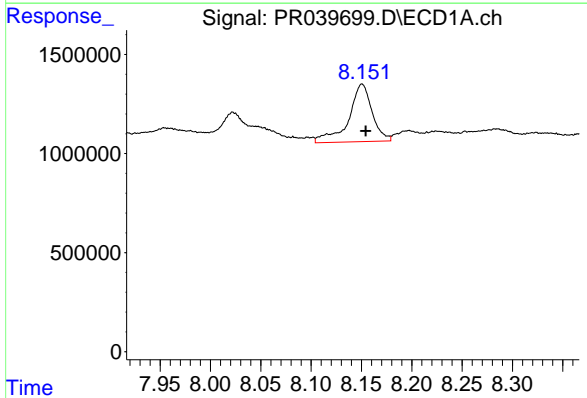
R.T.: 7.863 min
 Delta R.T.: -0.004 min
 Response: 5738252
 Conc: 10.33 ng/ml

Instrument :
 ECD_R
 ClientSampleId :
 S8-08-S



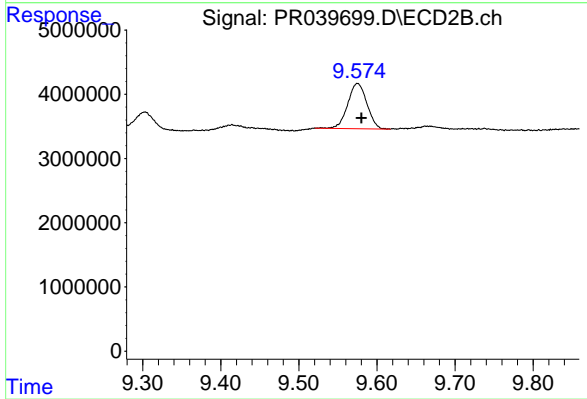
#43 AR-1268-3

R.T.: 0.000 min
 Exp R.T. : 9.146 min
 Response: 0
 Conc: N.D.



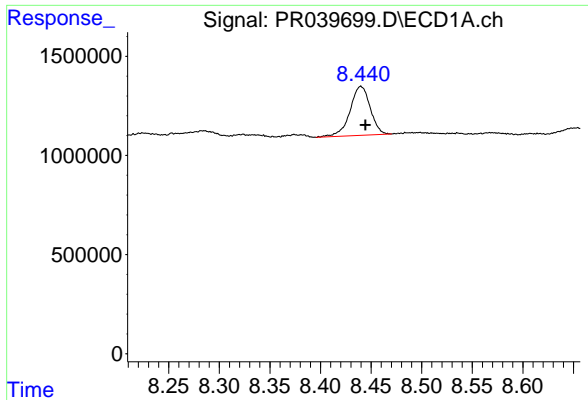
#44 AR-1268-4

R.T.: 8.151 min
 Delta R.T.: -0.004 min
 Response: 4714035
 Conc: 20.46 ng/ml



#44 AR-1268-4

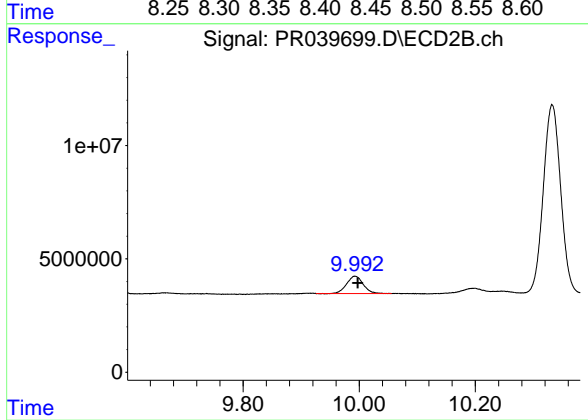
R.T.: 9.575 min
 Delta R.T.: -0.005 min
 Response: 12009904
 Conc: 16.20 ng/ml



#45 AR-1268-5

R.T.: 8.440 min
Delta R.T.: -0.005 min
Response: 3419609
Conc: 2.01 ng/ml

Instrument :
ECD_R
ClientSampled :
S8-08-S



#45 AR-1268-5

R.T.: 9.993 min
Delta R.T.: -0.005 min
Response: 15156204
Conc: 2.59 ng/ml