

Data Path : Z:\pestpcbsrv\HPCHEM1\ECD\_R\Data\PR072524\  
 Data File : PR067793.D  
 Signal(s) : Signal #1: ECD1A.ch Signal #2: ECD2B.ch  
 Acq On : 25 Jul 2024 14:19  
 Operator : AJ\MA  
 Sample : AR1248ICC500  
 Misc :  
 ALS Vial : 17 Sample Multiplier: 1

**Instrument :**  
 ECD\_R  
**ClientSampleId :**  
 AR1248ICC500

Integration File signal 1: autoint1.e  
 Integration File signal 2: autoint2.e  
 Quant Time: Jul 31 02:59:09 2024  
 Quant Method : Z:\pestpcbsrv\HPCHEM1\ECD\_R\Method\PR072524.M  
 Quant Title : GC EXTRACTABLES  
 QLast Update : Wed Jul 31 02:53:34 2024  
 Response via : Initial Calibration  
 Integrator: ChemStation

Volume Inj. : 2 µl  
 Signal #1 Phase : ZB-MR1 Signal #2 Phase: ZB-MR2  
 Signal #1 Info : 30Mx0.32mmx 0.50µ Signal #2 Info : 30M x 0.32mm x 0.25µm

Compound	RT#1	RT#2	Resp#1	Resp#2	ng/ml	ng/ml
-----						
System Monitoring Compounds						
1) SA Tetrachlo...	3.680	3.019	169.8E6	274.2E6	50.000	50.000
2) SA Decachlor...	9.584	8.352	201.0E6	167.7E6	50.000	50.000
Target Compounds						
21) L5 AR-1248-1	4.904	4.154	24356041	50813477	500.000	500.000
22) L5 AR-1248-2	5.195	4.406	35032145	67818514	500.000	500.000
23) L5 AR-1248-3	5.407	4.449	45793108	69600569	500.000	500.000
24) L5 AR-1248-4	5.840	4.627	47847880	80441838	500.000	500.000
25) L5 AR-1248-5	5.880	5.045	53935530	74648742	500.000	500.000
-----						

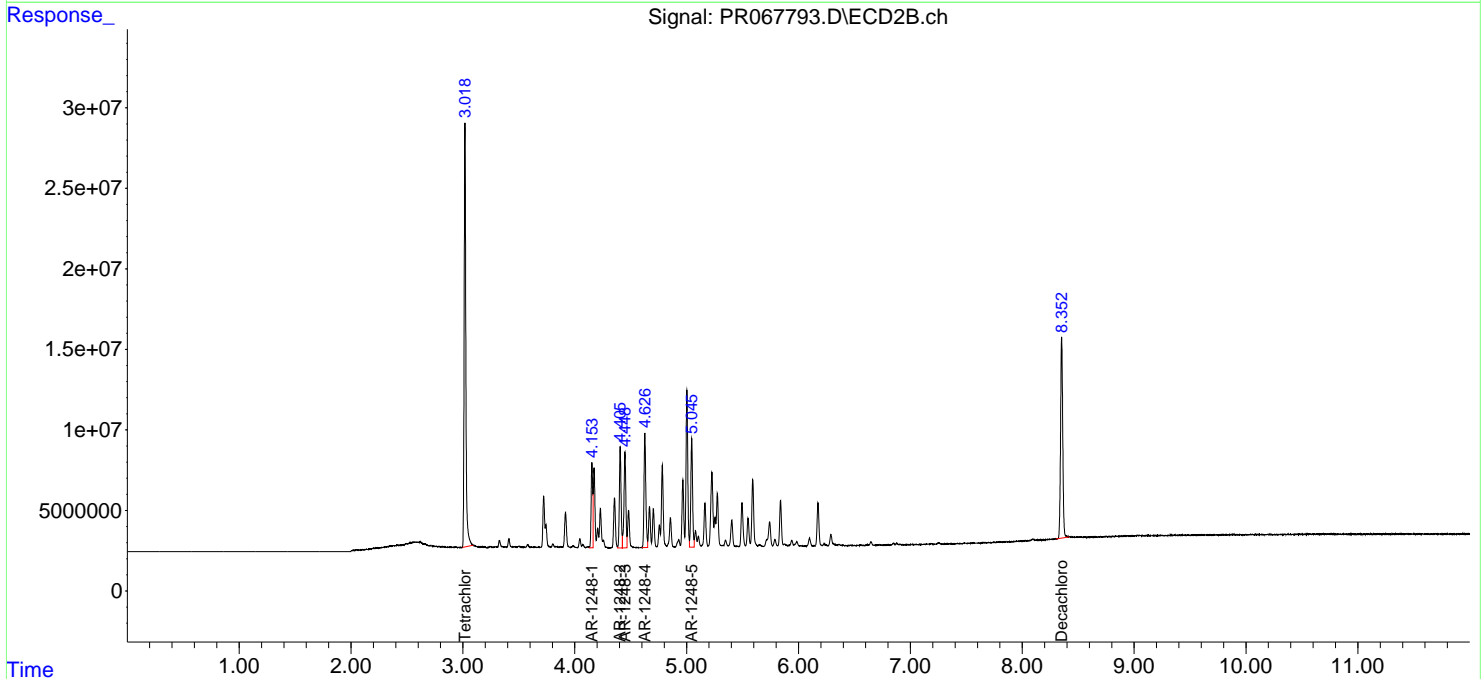
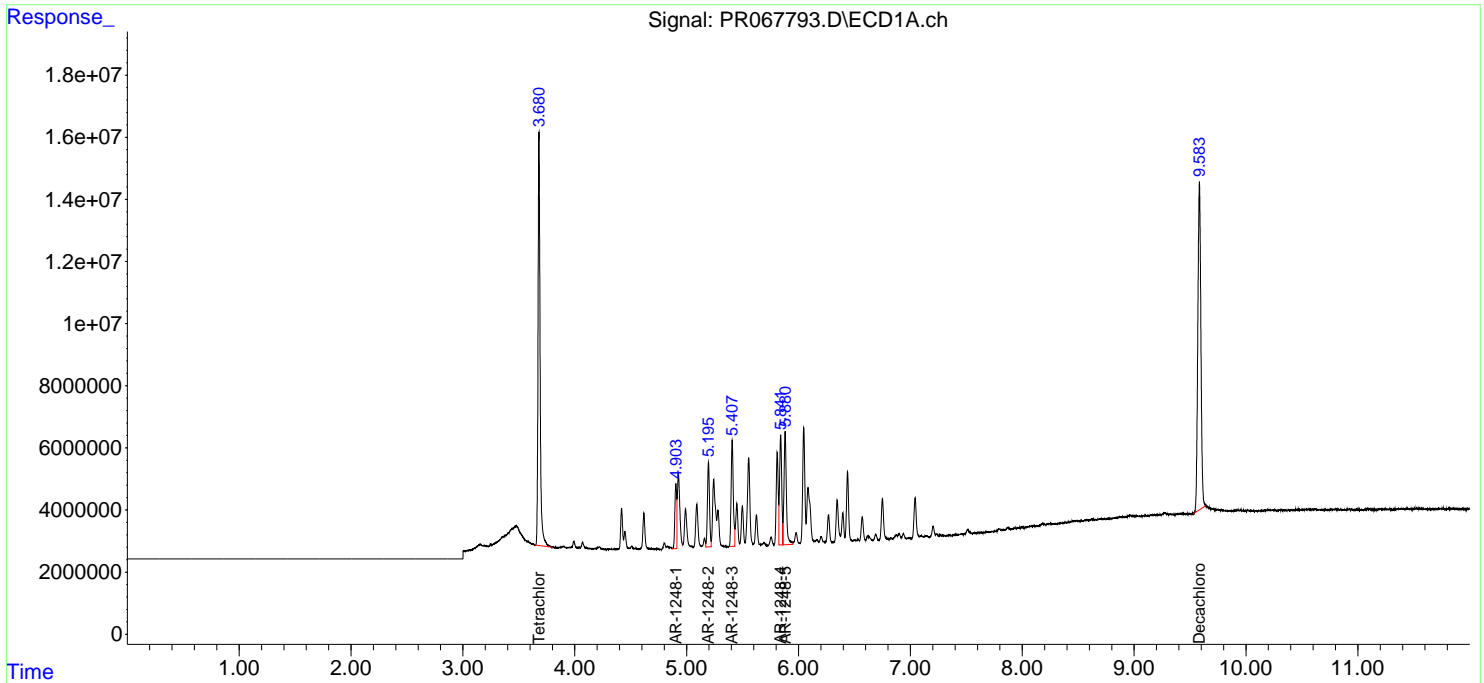
(f)=RT Delta > 1/2 Window (#)=Amounts differ by > 25% (m)=manual int.

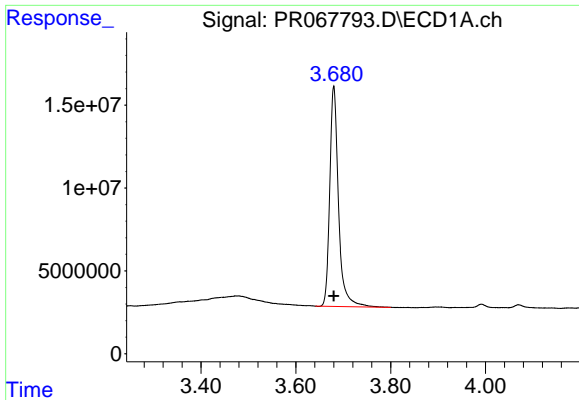
Data Path : Z:\pestpcbsrv\HPCHEM1\ECD\_R\Data\PR072524\  
 Data File : PR067793.D  
 Signal(s) : Signal #1: ECD1A.ch Signal #2: ECD2B.ch  
 Acq On : 25 Jul 2024 14:19  
 Operator : AJ\MA  
 Sample : AR1248ICC500  
 Misc :  
 ALS Vial : 17 Sample Multiplier: 1

Instrument :  
 ECD\_R  
 ClientSampleId :  
 AR1248ICC500

Integration File signal 1: autoint1.e  
 Integration File signal 2: autoint2.e  
 Quant Time: Jul 31 02:59:09 2024  
 Quant Method : Z:\pestpcbsrv\HPCHEM1\ECD\_R\Method\PR072524.M  
 Quant Title : GC EXTRACTABLES  
 QLast Update : Wed Jul 31 02:53:34 2024  
 Response via : Initial Calibration  
 Integrator: ChemStation

Volume Inj. : 2 µl  
 Signal #1 Phase : ZB-MR1 Signal #2 Phase: ZB-MR2  
 Signal #1 Info : 30Mx0.32mmx 0.50µ Signal #2 Info : 30M x 0.32mm x 0.25µm

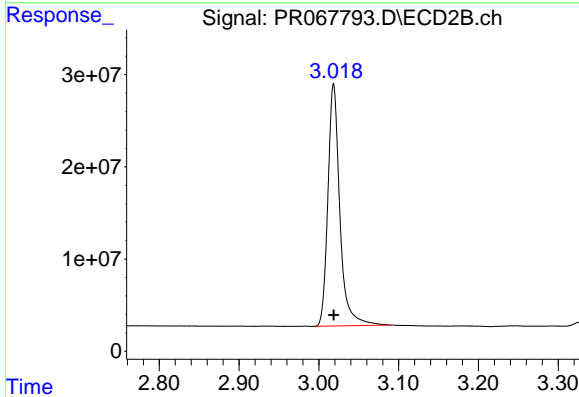




#1 Tetrachloro-m-xylene

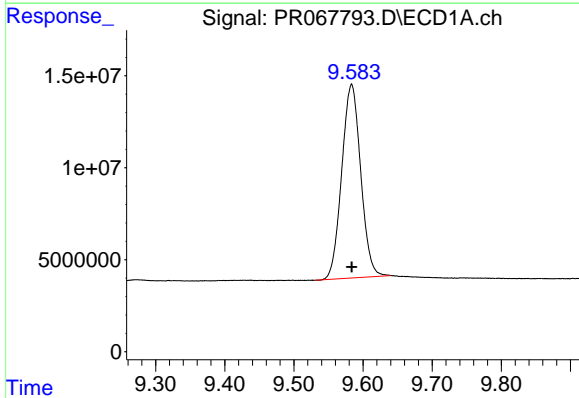
R.T.: 3.680 min  
 Delta R.T.: 0.000 min  
 Response: 169844731  
 Conc: 50.00 ng/ml

Instrument :  
 ECD\_R  
 ClientSampleId :  
 AR1248ICC500



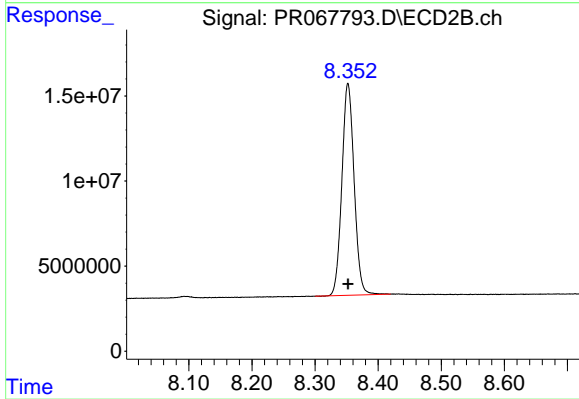
#1 Tetrachloro-m-xylene

R.T.: 3.019 min  
 Delta R.T.: 0.000 min  
 Response: 274171896  
 Conc: 50.00 ng/ml



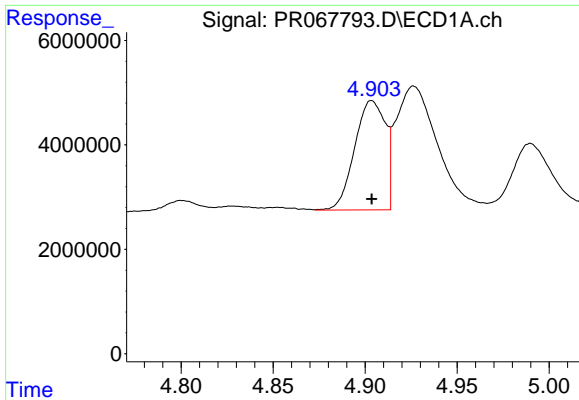
#2 Decachlorobiphenyl

R.T.: 9.584 min  
 Delta R.T.: 0.000 min  
 Response: 201015379  
 Conc: 50.00 ng/ml



#2 Decachlorobiphenyl

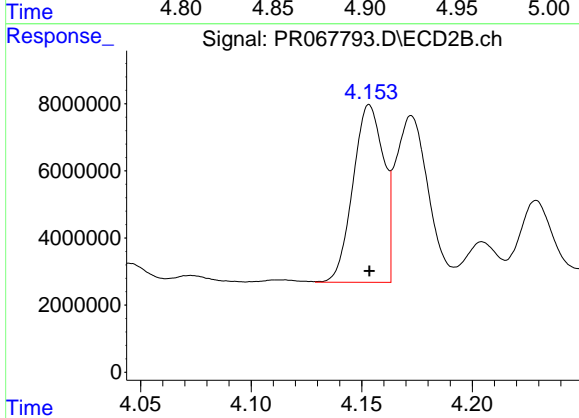
R.T.: 8.352 min  
 Delta R.T.: 0.000 min  
 Response: 167746839  
 Conc: 50.00 ng/ml



#21 AR-1248-1

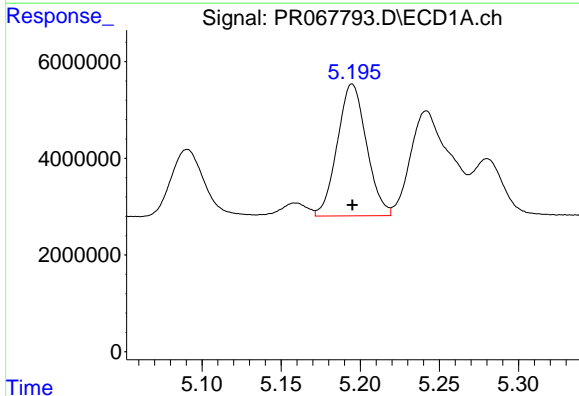
R.T.: 4.904 min  
 Delta R.T.: 0.000 min  
 Response: 24356041  
 Conc: 500.00 ng/ml

Instrument :  
 ECD\_R  
 ClientSampleId :  
 AR1248ICC500



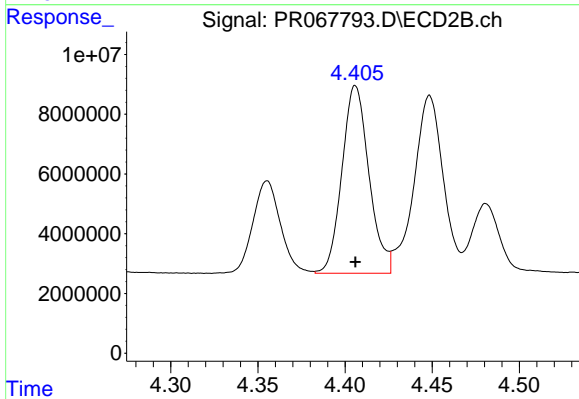
#21 AR-1248-1

R.T.: 4.154 min  
 Delta R.T.: 0.000 min  
 Response: 50813477  
 Conc: 500.00 ng/ml



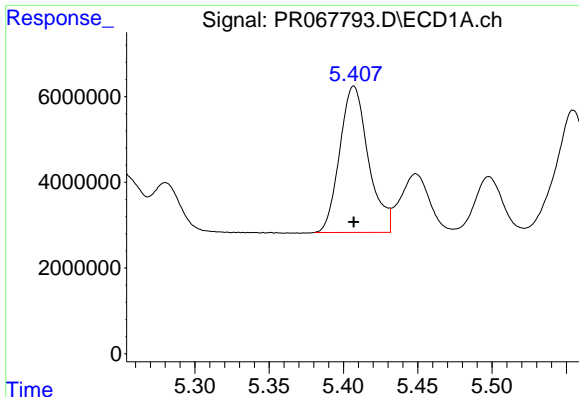
#22 AR-1248-2

R.T.: 5.195 min  
 Delta R.T.: 0.000 min  
 Response: 35032145  
 Conc: 500.00 ng/ml



#22 AR-1248-2

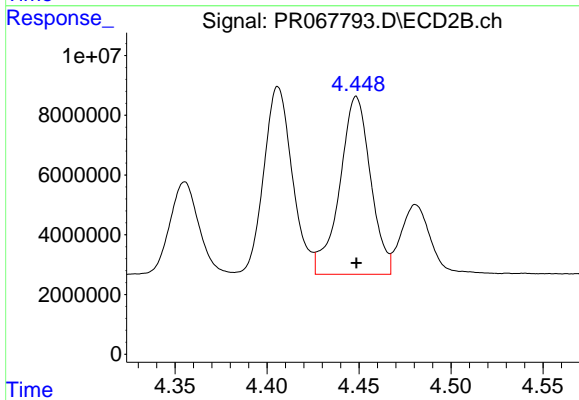
R.T.: 4.406 min  
 Delta R.T.: 0.000 min  
 Response: 67818514  
 Conc: 500.00 ng/ml



#23 AR-1248-3

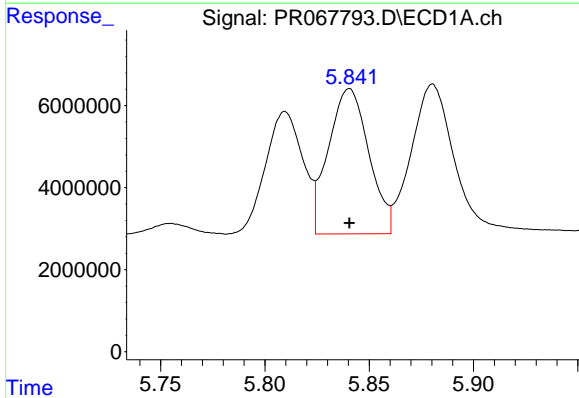
R.T.: 5.407 min  
 Delta R.T.: 0.000 min  
 Response: 45793108  
 Conc: 500.00 ng/ml

Instrument :  
 ECD\_R  
 ClientSampleId :  
 AR1248ICC500



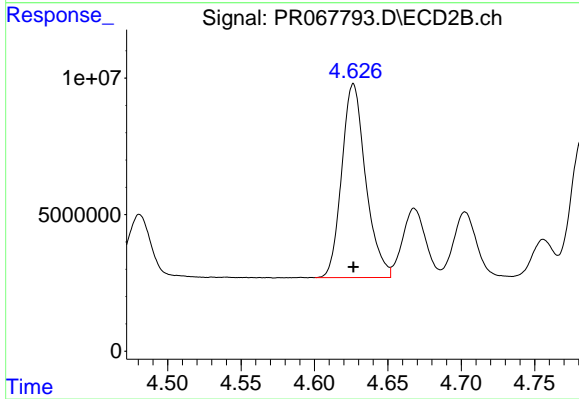
#23 AR-1248-3

R.T.: 4.449 min  
 Delta R.T.: 0.000 min  
 Response: 69600569  
 Conc: 500.00 ng/ml



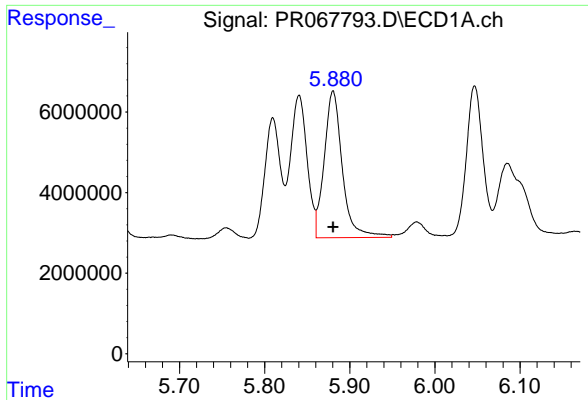
#24 AR-1248-4

R.T.: 5.840 min  
 Delta R.T.: 0.000 min  
 Response: 47847880  
 Conc: 500.00 ng/ml



#24 AR-1248-4

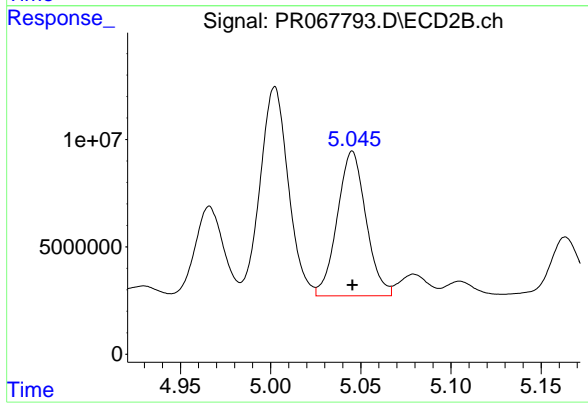
R.T.: 4.627 min  
 Delta R.T.: 0.000 min  
 Response: 80441838  
 Conc: 500.00 ng/ml



#25 AR-1248-5

R.T.: 5.880 min  
Delta R.T.: 0.000 min  
Response: 53935530  
Conc: 500.00 ng/ml

Instrument :  
ECD\_R  
ClientSampleId :  
AR1248ICC500



#25 AR-1248-5

R.T.: 5.045 min  
Delta R.T.: 0.000 min  
Response: 74648742  
Conc: 500.00 ng/ml