

Data Path : Z:\pestpcbsrv\HPCHEM1\ECD_R\Data\PR072524\
 Data File : PR067805.D
 Signal(s) : Signal #1: ECD1A.ch Signal #2: ECD2B.ch
 Acq On : 25 Jul 2024 17:31
 Operator : AJ\MA
 Sample : AR1268ICC250
 Misc :
 ALS Vial : 29 Sample Multiplier: 1

Instrument :
 ECD_R
ClientSampleId :
 AR1268ICC250

Manual Integrations
APPROVED

Reviewed By :Yogesh Patel 07/26/2024
 Supervised By :Ankita Jodhani 07/26/2024

Integration File signal 1: autoint1.e
 Integration File signal 2: autoint2.e
 Quant Time: Jul 25 17:43:42 2024
 Quant Method : Z:\pestpcbsrv\HPCHEM1\ECD_R\Method\PR072524.M
 Quant Title : GC EXTRACTABLES
 QLast Update : Thu Jul 25 17:33:06 2024
 Response via : Initial Calibration
 Integrator: ChemStation

Volume Inj. : 2 µl
 Signal #1 Phase : ZB-MR1 Signal #2 Phase: ZB-MR2
 Signal #1 Info : 30Mx0.32mmx 0.50µ Signal #2 Info : 30M x 0.32mm x 0.25µm

Compound	RT#1	RT#2	Resp#1	Resp#2	ng/ml	ng/ml

System Monitoring Compounds						
1) SA Tetrachlo...	3.680	3.017	82634786	136.6E6	25.198	25.626
2) SA Decachlor...	9.583	8.348	173.0E6	143.8E6	26.206	25.831
Target Compounds						
41) L9 AR-1268-1	8.172	7.184	116.9E6	134.8E6	260.546m	257.299
42) L9 AR-1268-2	8.264	7.253	122.0E6	122.2E6	257.634	255.651
43) L9 AR-1268-3	8.481	7.479	114.9E6	105.3E6	258.536	255.661
44) L9 AR-1268-4	8.886	7.791	43307787	43034796	256.894	261.260
45) L9 AR-1268-5	9.271	8.090	347.3E6	300.7E6	253.587	250.048

(f)=RT Delta > 1/2 Window (#)=Amounts differ by > 25% (m)=manual int.

Data Path : Z:\pestpcbsrv\HPCHEM1\ECD_R\Data\PR072524\
 Data File : PR067805.D
 Signal(s) : Signal #1: ECD1A.ch Signal #2: ECD2B.ch
 Acq On : 25 Jul 2024 17:31
 Operator : AJ\MA
 Sample : AR1268ICC250
 Misc :
 ALS Vial : 29 Sample Multiplier: 1

Instrument :

ECD_R

ClientSampleId :

AR1268ICC250

Manual Integrations

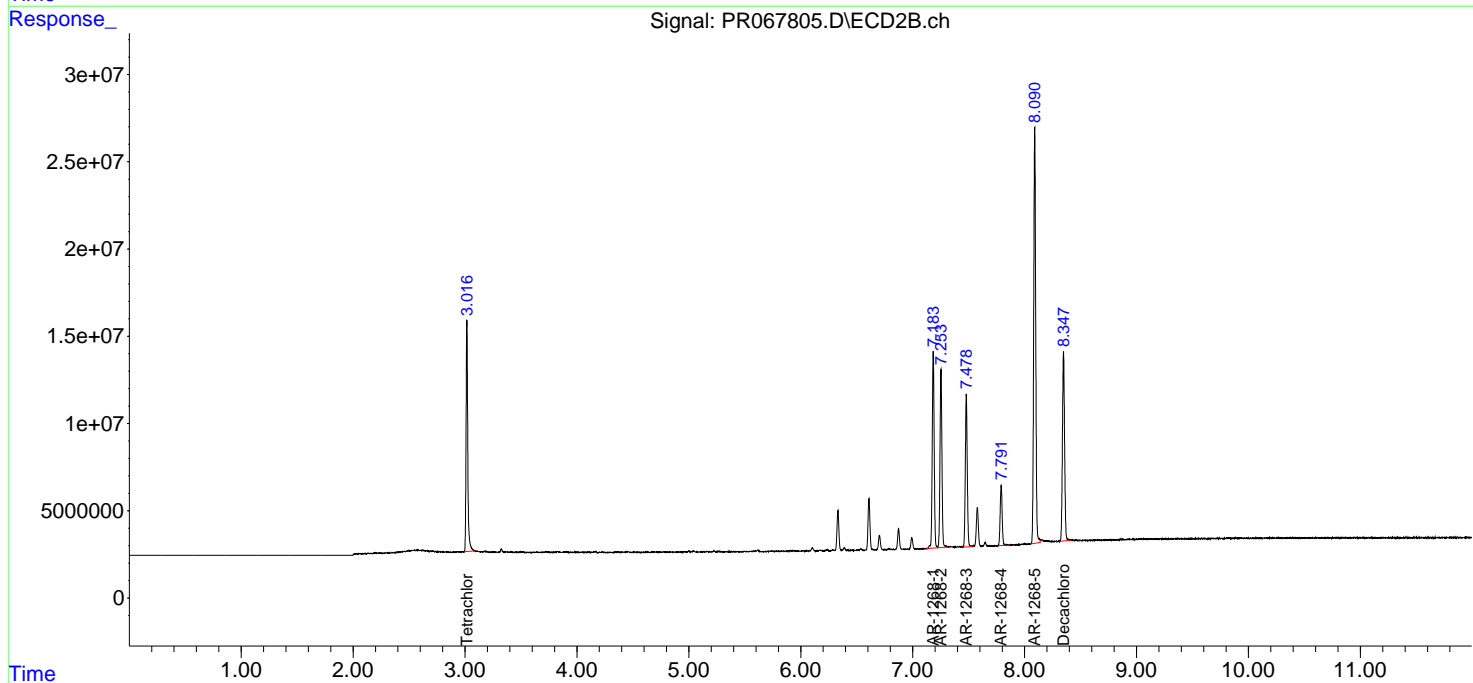
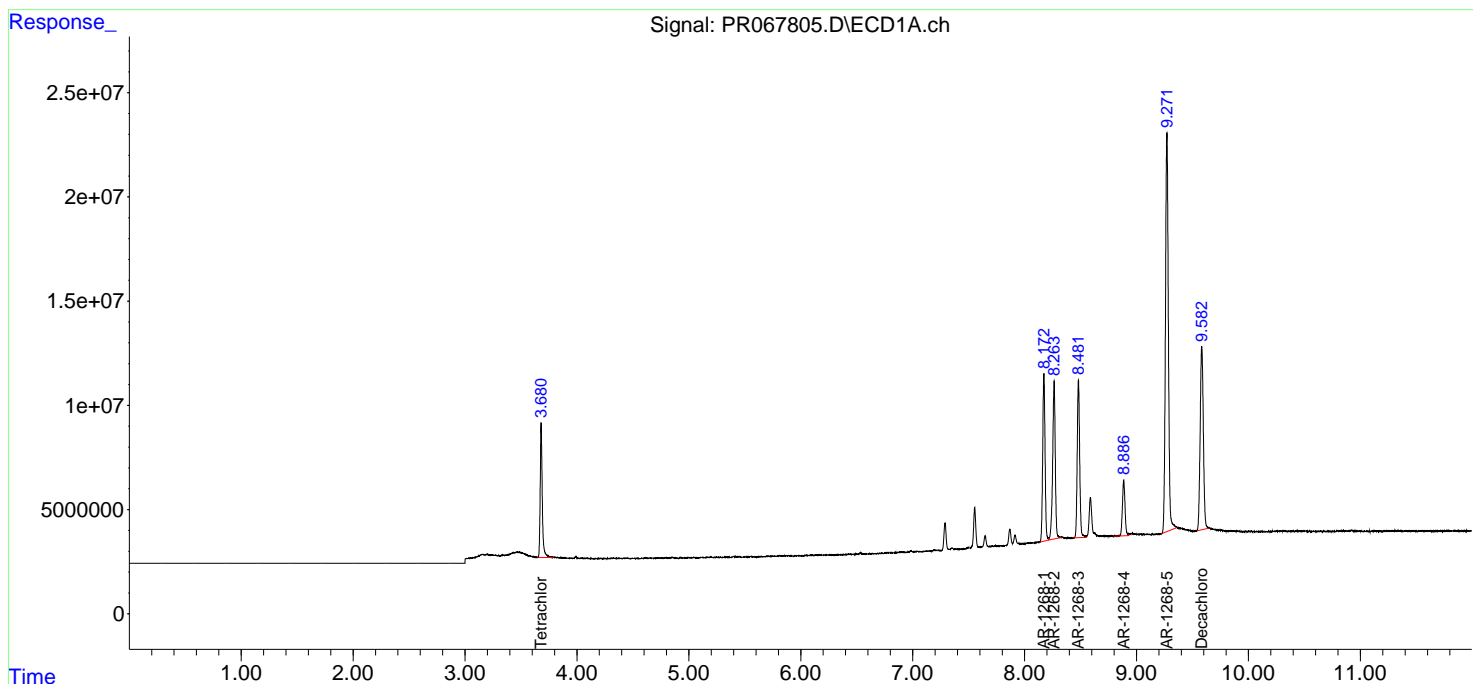
APPROVED

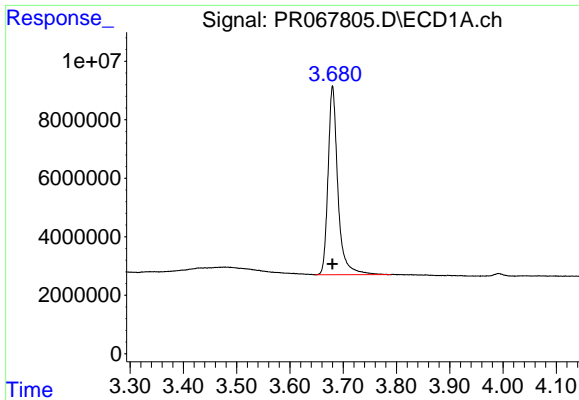
Reviewed By :Yogesh Patel 07/26/2024

Supervised By :Ankita Jodhani 07/26/2024

Integration File signal 1: autoint1.e
 Integration File signal 2: autoint2.e
 Quant Time: Jul 25 17:43:42 2024
 Quant Method : Z:\pestpcbsrv\HPCHEM1\ECD_R\Method\PR072524.M
 Quant Title : GC EXTRACTABLES
 QLast Update : Thu Jul 25 17:33:06 2024
 Response via : Initial Calibration
 Integrator: ChemStation

Volume Inj. : 2 µl
 Signal #1 Phase : ZB-MR1 Signal #2 Phase: ZB-MR2
 Signal #1 Info : 30Mx0.32mmx 0.50µ Signal #2 Info : 30M x 0.32mm x 0.25µm



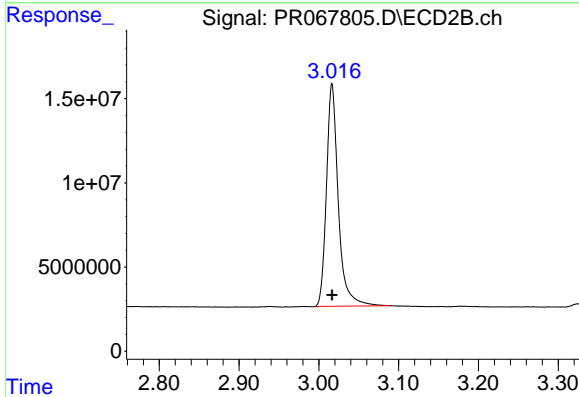


#1 Tetrachloro-m-xylene
 R.T.: 3.680 min
 Delta R.T.: 0.000 min
 Response: 82634786
 Conc: 25.20 ng/ml

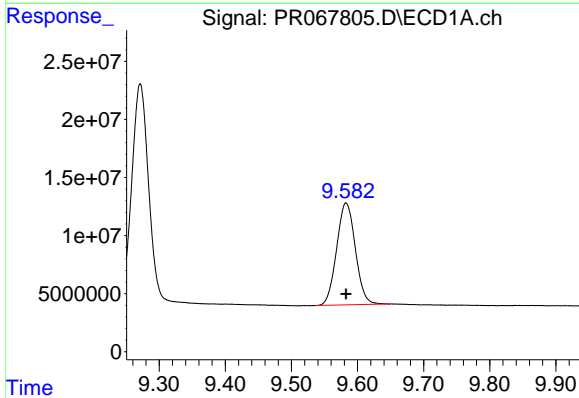
Instrument :
 ECD_R
 ClientSampleId :
 AR1268ICC250

Manual Integrations
 APPROVED

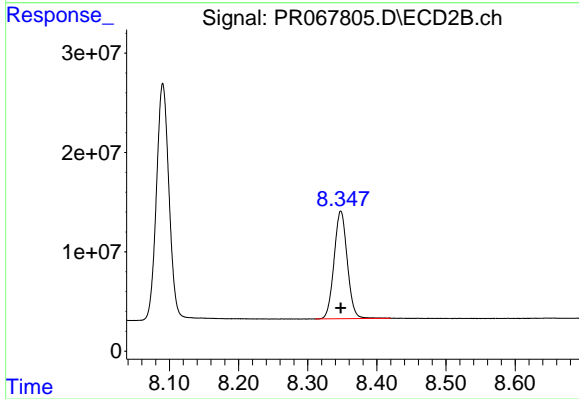
Reviewed By :Yogesh Patel 07/26/2024
 Supervised By :Ankita Jodhani 07/26/2024



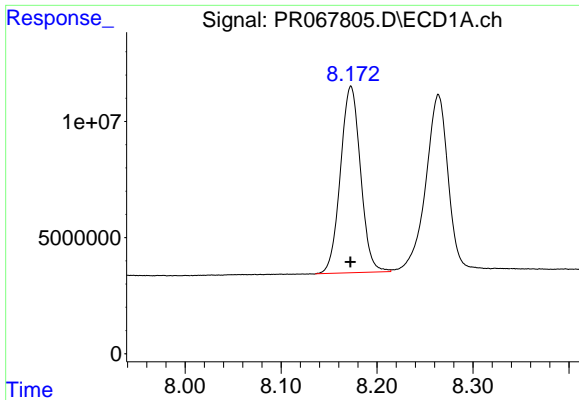
#1 Tetrachloro-m-xylene
 R.T.: 3.017 min
 Delta R.T.: 0.000 min
 Response: 136583958
 Conc: 25.63 ng/ml



#2 Decachlorobiphenyl
 R.T.: 9.583 min
 Delta R.T.: 0.000 min
 Response: 172970749
 Conc: 26.21 ng/ml



#2 Decachlorobiphenyl
 R.T.: 8.348 min
 Delta R.T.: 0.000 min
 Response: 143757106
 Conc: 25.83 ng/ml



#41 AR-1268-1

R.T.: 8.172 min
 Delta R.T.: 0.000 min
 Response: 116907867
 Conc: 260.55 ng/ml

Instrument :

ECD_R

ClientSampleId :

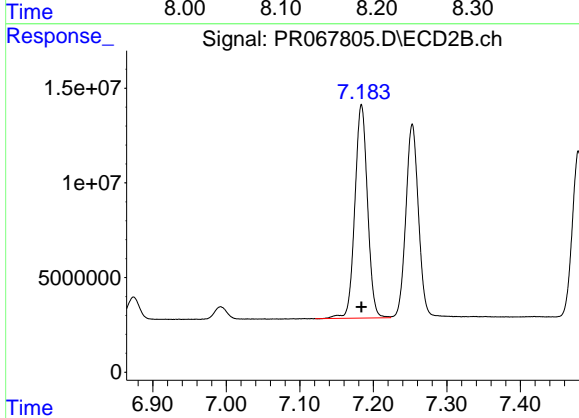
AR1268ICC250

Manual Integrations

APPROVED

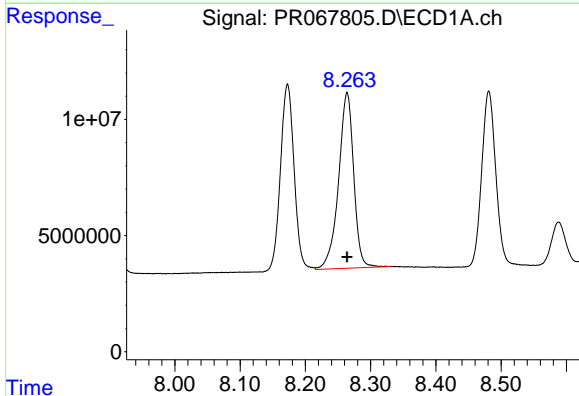
Reviewed By :Yogesh Patel 07/26/2024

Supervised By :Ankita Jodhani 07/26/2024



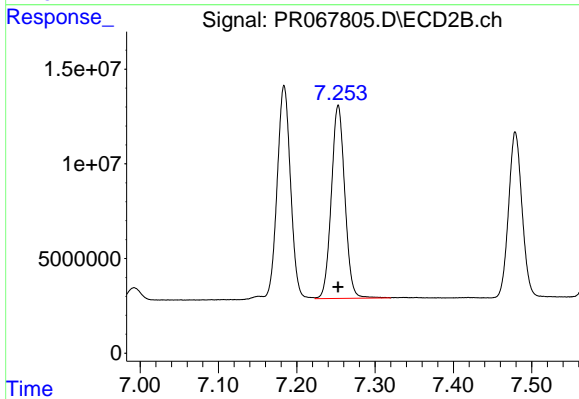
#41 AR-1268-1

R.T.: 7.184 min
 Delta R.T.: 0.000 min
 Response: 134781327
 Conc: 257.30 ng/ml



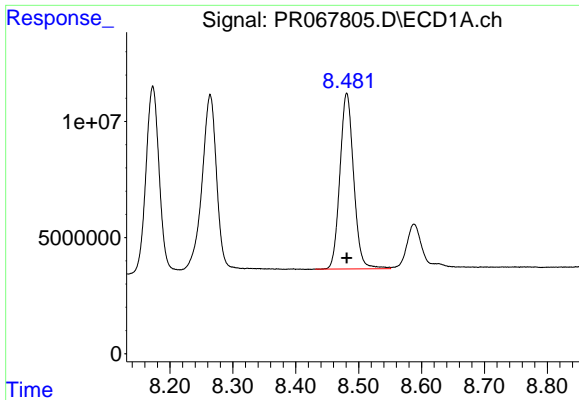
#42 AR-1268-2

R.T.: 8.264 min
 Delta R.T.: 0.000 min
 Response: 121979811
 Conc: 257.63 ng/ml



#42 AR-1268-2

R.T.: 7.253 min
 Delta R.T.: 0.000 min
 Response: 122192390
 Conc: 255.65 ng/ml



#43 AR-1268-3

R.T.: 8.481 min
 Delta R.T.: 0.000 min
 Response: 114917091
 Conc: 258.54 ng/ml

Instrument :

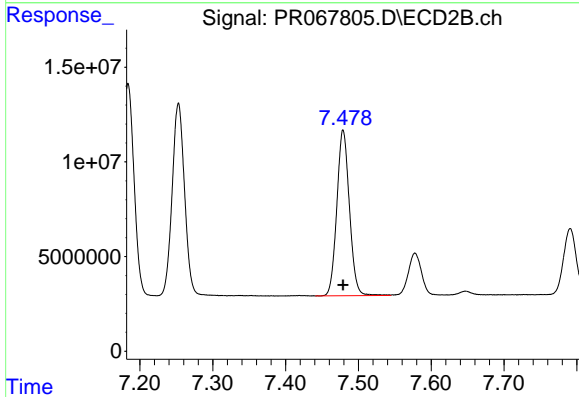
ECD_R

ClientSampleId :

AR1268ICC250

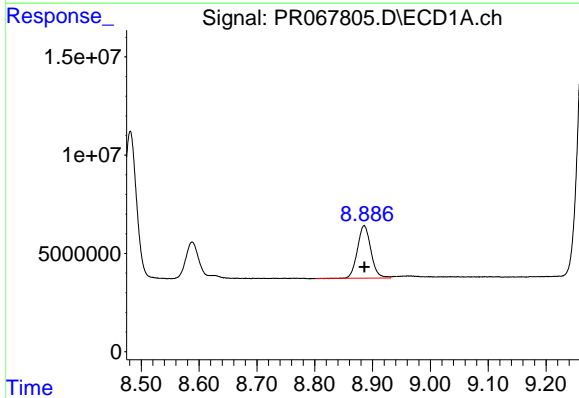
Manual Integrations
 APPROVED

Reviewed By :Yogesh Patel 07/26/2024
 Supervised By :Ankita Jodhani 07/26/2024



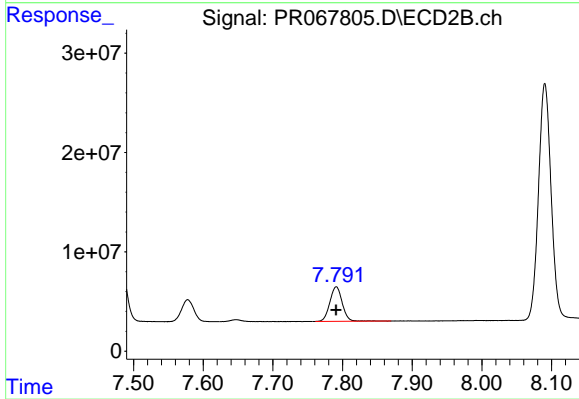
#43 AR-1268-3

R.T.: 7.479 min
 Delta R.T.: 0.000 min
 Response: 105273156
 Conc: 255.66 ng/ml



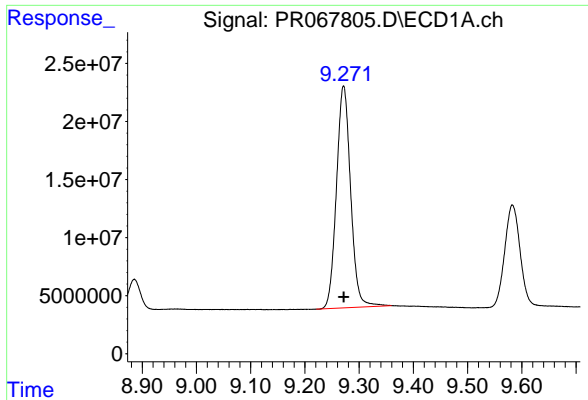
#44 AR-1268-4

R.T.: 8.886 min
 Delta R.T.: 0.000 min
 Response: 43307787
 Conc: 256.89 ng/ml



#44 AR-1268-4

R.T.: 7.791 min
 Delta R.T.: 0.000 min
 Response: 43034796
 Conc: 261.26 ng/ml



#45 AR-1268-5

R.T.: 9.271 min
 Delta R.T.: 0.000 min
 Response: 347254785
 Conc: 253.59 ng/ml

Instrument :

ECD_R

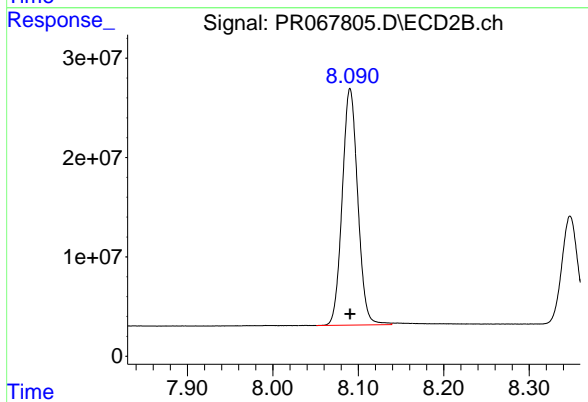
ClientSampleId :

AR1268ICC250

Manual Integrations

APPROVED

Reviewed By :Yogesh Patel 07/26/2024
 Supervised By :Ankita Jodhani 07/26/2024



#45 AR-1268-5

R.T.: 8.090 min
 Delta R.T.: 0.000 min
 Response: 300686589
 Conc: 250.05 ng/ml