

Data Path : Z:\pestpcbsrv\HPCHEM1\ECD_R\Data\PR072822\
 Data File : PR055483.D
 Signal(s) : Signal #1: ECD1A.ch Signal #2: ECD2B.ch
 Acq On : 27 Jul 2022 11:11
 Operator : AJ\MA
 Sample : N3874-01
 Misc :
 ALS Vial : 13 Sample Multiplier: 1

Instrument :
 ECD_R
 ClientSampleId :

Integration File signal 1: autoint1.e
 Integration File signal 2: autoint2.e
 Quant Time: Jul 28 03:13:42 2022
 Quant Method : Z:\pestpcbsrv\HPCHEM1\ECD_R\Method\PR072722CLP.M
 Quant Title : GC EXTRACTABLES
 QLast Update : Wed Jul 27 04:49:23 2022
 Response via : Initial Calibration
 Integrator: ChemStation

Volume Inj. : 1 µl
 Signal #1 Phase : ZB MR1 Signal #2 Phase: ZB MR2
 Signal #1 Info : 30Mx0.32mmx 0.5µm Signal #2 Info : 30M x 0.32mm x 0.25µm

Compound	RT#1	RT#2	Resp#1	Resp#2	ng/ml	ng/ml

System Monitoring Compounds						
1) SA Tetrachlo...	3.637	2.908	78495833	37505991	19.162	19.945
2) SA Decachlor...	9.533	8.131	56441770	56762762	36.057	34.395
Target Compounds						
3) L1 AR-1016-1	4.864	4.031	50890	136643	0.466	2.156 #
4) L1 AR-1016-2	4.890	4.031	300650	136643	1.942	1.547
5) L1 AR-1016-3	4.950	4.211	235859	112690	2.487	2.398
6) L1 AR-1016-4	0.000	4.263	0	140383	N.D.	3.749 #
7) L1 AR-1016-5	0.000	4.418f	0	116472	N.D.	2.452 #
8) L2 AR-1221-1	3.846	3.128	2359750	146655	50.451	6.716 #
9) L2 AR-1221-2	3.948	3.208	1950921	996688	60.666	65.186
10) L2 AR-1221-3	4.044	3.291	249370	67563	2.432	1.317 #
11) L3 AR-1232-1	4.044	3.291	249370	67563	2.849	1.578 #
12) L3 AR-1232-2	4.597	4.031	3308624	136643	76.639	3.398 #
13) L3 AR-1232-3	4.890	4.211	300650	112690	4.227	5.364 #
14) L3 AR-1232-4	0.000	4.320	0	99731	N.D.	5.463 #
15) L3 AR-1232-5	5.197f	4.418f	352623	116472	14.119	5.723 #
16) L4 AR-1242-1	4.864	4.031	50890	136643	0.546	2.433 #
17) L4 AR-1242-2	4.890	4.031	300650	136643	2.244	1.763
18) L4 AR-1242-3	4.950	4.211	235859	112690	2.853	2.702
19) L4 AR-1242-4	0.000	4.320	0	99731	N.D.	2.579 #
20) L4 AR-1242-5	5.805	4.846	212529	751705	3.679	14.595 #
21) L5 AR-1248-1	4.864	4.031	50890	136643	0.726	3.307 #
22) L5 AR-1248-2	5.197f	4.263	352623	140383	3.996	2.500 #
23) L5 AR-1248-3	0.000	4.320	0	99731	N.D.	1.742 #
24) L5 AR-1248-4	5.805	4.418f	212529	116472	2.215	1.678
25) L5 AR-1248-5	5.805	4.897	212529	170383	2.276	2.397
26) L6 AR-1254-1	5.761	4.846	455539	751705	4.697	7.260 #
27) L6 AR-1254-2	6.000	5.045f	680684	1654615	4.897	18.396 #
28) L6 AR-1254-3	6.386	0.000	440567	0	3.180	N.D. #
29) L6 AR-1254-4	6.687	5.666	343358	75021	3.393	0.805 #
30) L6 AR-1254-5	7.214f	6.110	199520	307160	1.908	2.318
31) L7 AR-1260-1	6.640f	5.570	161881	408200	1.805	4.761 #
32) L7 AR-1260-2	6.837	5.785	317282	214853	3.052	2.055 #
33) L7 AR-1260-3	7.214	5.939	199520	4286231	2.537	43.743 #
35) L7 AR-1260-5	7.893f	6.690	205435	310905	1.189	1.514 #
36) L8 AR-1262-1	7.214	6.110f	199520	307160	1.589	2.284 #
37) L8 AR-1262-2	7.893f	6.690	205435	310905	0.934	1.268 #
38) L8 AR-1262-3	8.151	6.994	68463	490495	0.449	4.963 #
39) L8 AR-1262-4	8.217	7.067	366627	221813	4.860	1.208 #
40) L8 AR-1262-5	8.832	0.000	95442	0	1.139	N.D. #
41) L9 AR-1268-1	8.151	6.994	68463	490495	0.270	1.735 #
42) L9 AR-1268-2	8.217	7.067	366627	221813	1.570	0.870 #

Data Path : Z:\pestpcbsrv\HPCHEM1\ECD_R\Data\PR072822\
 Data File : PR055483.D
 Signal(s) : Signal #1: ECD1A.ch Signal #2: ECD2B.ch
 Acq On : 27 Jul 2022 11:11
 Operator : AJ\MA
 Sample : N3874-01
 Misc :
 ALS Vial : 13 Sample Multiplier: 1

Instrument :
 ECD_R
 ClientSampleId :

Integration File signal 1: autoint1.e
 Integration File signal 2: autoint2.e
 Quant Time: Jul 28 03:13:42 2022
 Quant Method : Z:\pestpcbsrv\HPCHEM1\ECD_R\Method\PR072722CLP.M
 Quant Title : GC EXTRACTABLES
 QLast Update : Wed Jul 27 04:49:23 2022
 Response via : Initial Calibration
 Integrator: ChemStation

Volume Inj. : 1 µl
 Signal #1 Phase : ZB MR1 Signal #2 Phase: ZB MR2
 Signal #1 Info : 30Mx0.32mmx 0.5µm Signal #2 Info : 30M x 0.32mm x 0.25µm

	Compound	RT#1	RT#2	Resp#1	Resp#2	ng/ml	ng/ml
43)	L9 AR-1268-3	8.440	7.280	580918	262114	2.968	1.208 #
44)	L9 AR-1268-4	8.832	0.000	95442	0	1.038	N.D. #
45)	L9 AR-1268-5	9.227	7.892	546330	533978	0.860	0.765

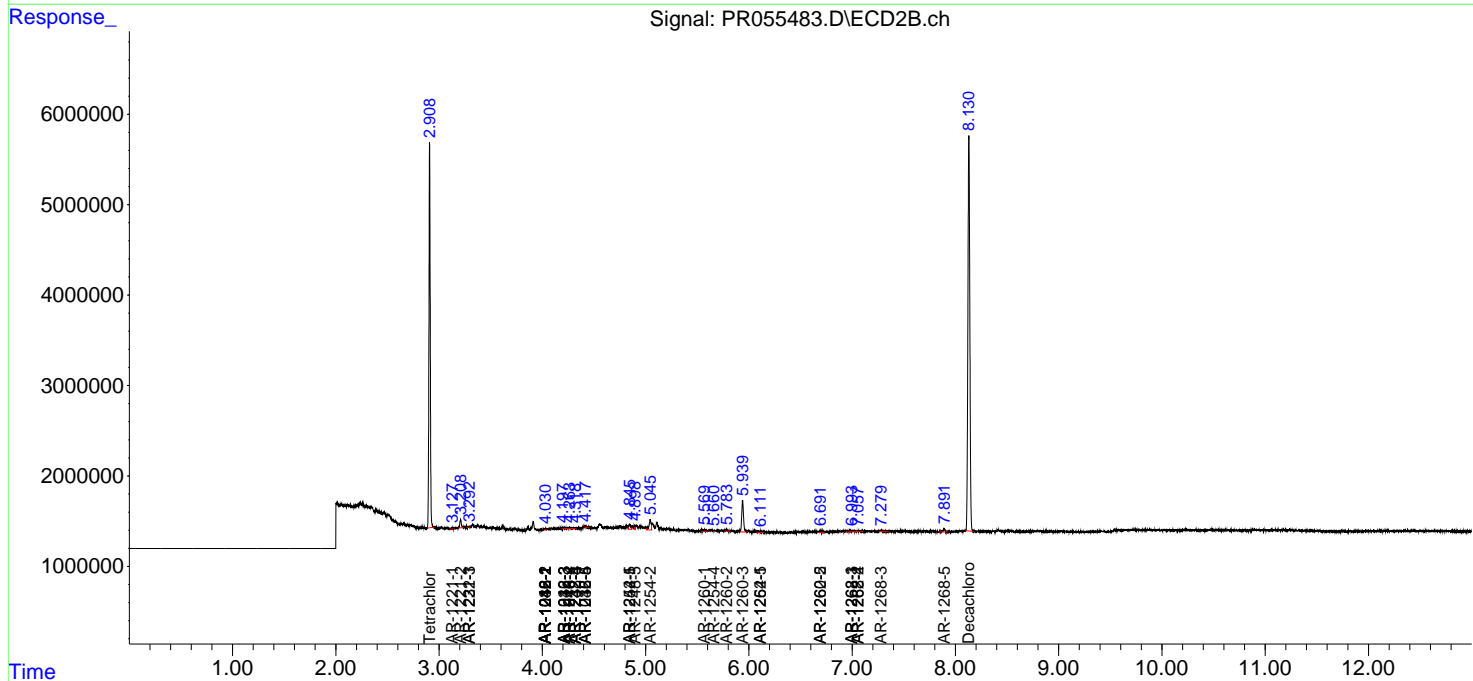
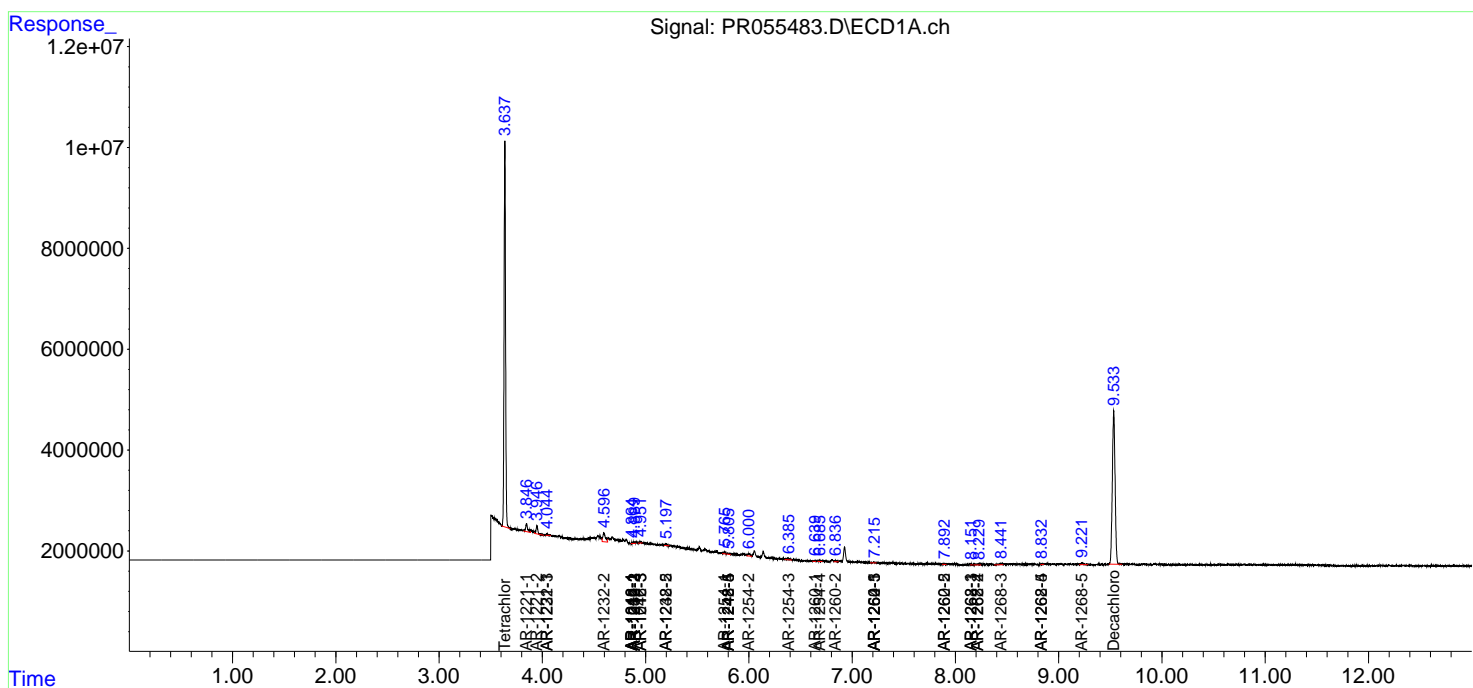
(f)=RT Delta > 1/2 Window (#)=Amounts differ by > 25% (m)=manual int.

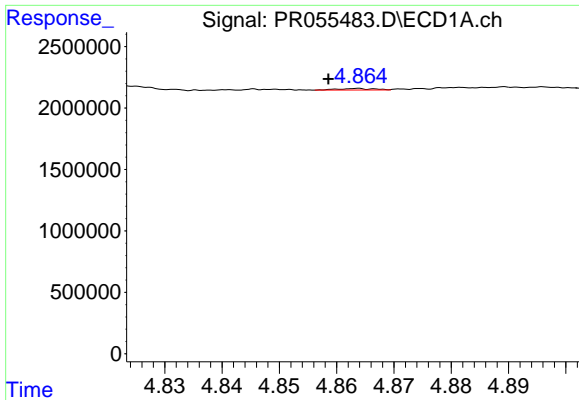
Data Path : Z:\pestpcbsrv\HPCHEM1\ECD_R\Data\PR072822\
 Data File : PR055483.D
 Signal(s) : Signal #1: ECD1A.ch Signal #2: ECD2B.ch
 Acq On : 27 Jul 2022 11:11
 Operator : AJ\MA
 Sample : N3874-01
 Misc :
 ALS Vial : 13 Sample Multiplier: 1

Instrument :
 ECD_R
 ClientSampleId :

Integration File signal 1: autoint1.e
 Integration File signal 2: autoint2.e
 Quant Time: Jul 28 03:13:42 2022
 Quant Method : Z:\pestpcbsrv\HPCHEM1\ECD_R\Method\PR072722CLP.M
 Quant Title : GC EXTRACTABLES
 QLast Update : Wed Jul 27 04:49:23 2022
 Response via : Initial Calibration
 Integrator: ChemStation

Volume Inj. : 1 µl
 Signal #1 Phase : ZB MR1 Signal #2 Phase: ZB MR2
 Signal #1 Info : 30Mx0.32mmx 0.5µm Signal #2 Info : 30M x 0.32mm x 0.25µm

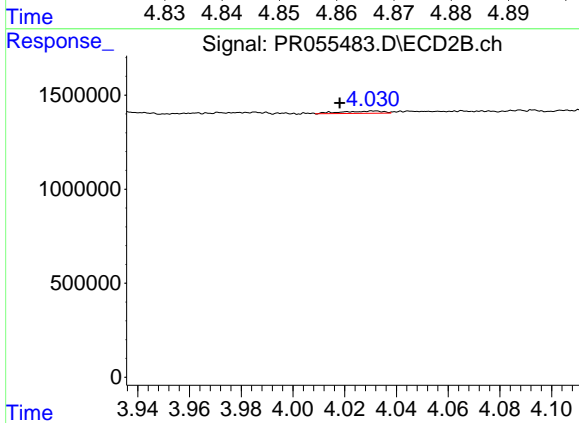




#3 AR-1016-1

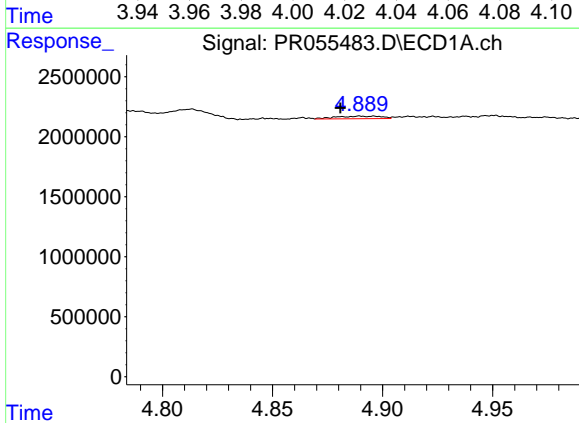
R.T.: 4.864 min
 Delta R.T.: 0.005 min
 Response: 50890
 Conc: 0.47 ng/ml

Instrument :
 ECD_R
 ClientSampleId :



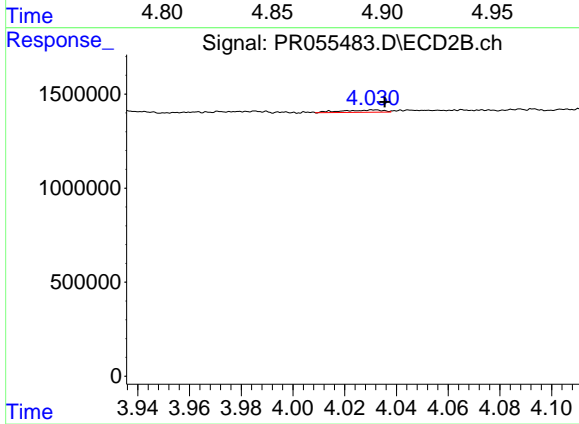
#3 AR-1016-1

R.T.: 4.031 min
 Delta R.T.: 0.013 min
 Response: 136643
 Conc: 2.16 ng/ml



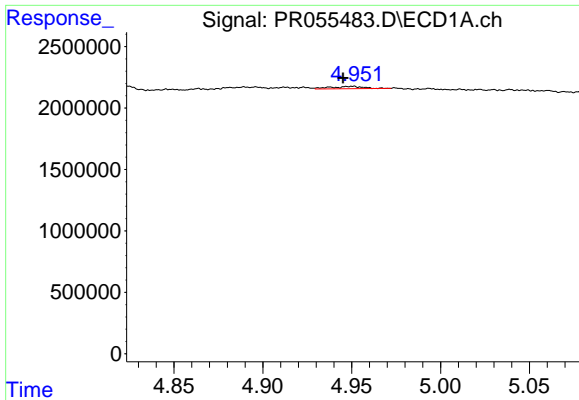
#4 AR-1016-2

R.T.: 4.890 min
 Delta R.T.: 0.009 min
 Response: 300650
 Conc: 1.94 ng/ml



#4 AR-1016-2

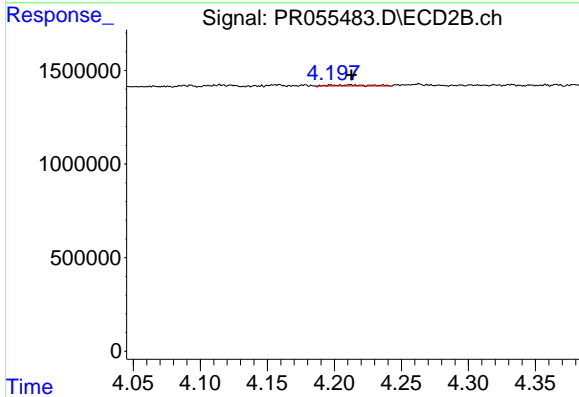
R.T.: 4.031 min
 Delta R.T.: -0.004 min
 Response: 136643
 Conc: 1.55 ng/ml



#5 AR-1016-3

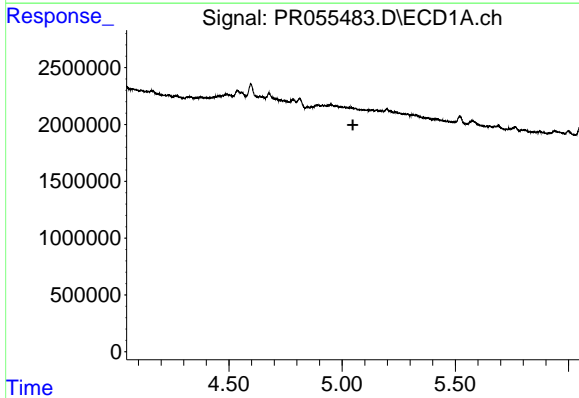
R.T.: 4.950 min
 Delta R.T.: 0.005 min
 Response: 235859
 Conc: 2.49 ng/ml

Instrument :
 ECD_R
 ClientSampleId :



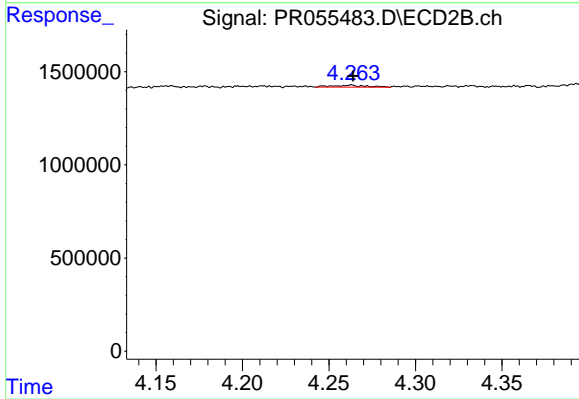
#5 AR-1016-3

R.T.: 4.211 min
 Delta R.T.: -0.001 min
 Response: 112690
 Conc: 2.40 ng/ml



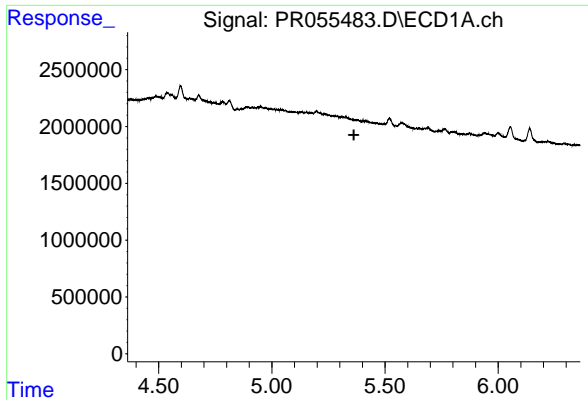
#6 AR-1016-4

R.T.: 0.000 min
 Exp R.T. : 5.048 min
 Response: 0
 Conc: N.D.



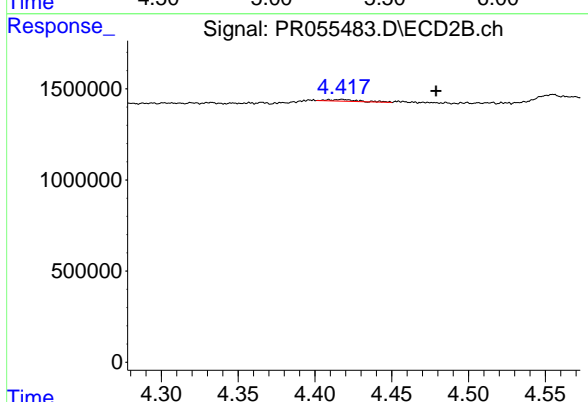
#6 AR-1016-4

R.T.: 4.263 min
 Delta R.T.: -0.001 min
 Response: 140383
 Conc: 3.75 ng/ml

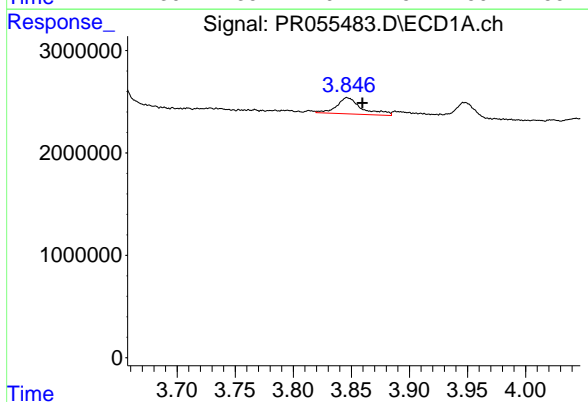


#7 AR-1016-5
 R.T.: 0.000 min
 Exp R.T.: 5.363 min
 Response: 0
 Conc: N.D.

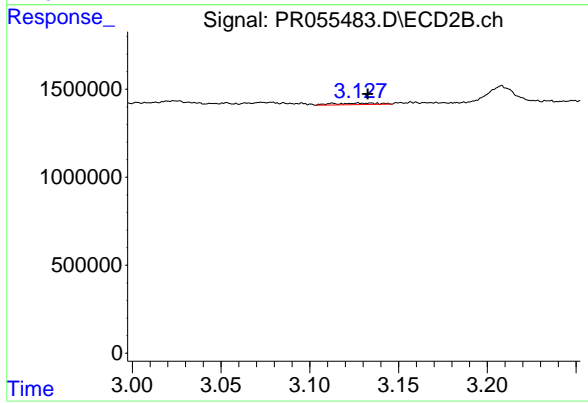
Instrument :
 ECD_R
 ClientSampleId :



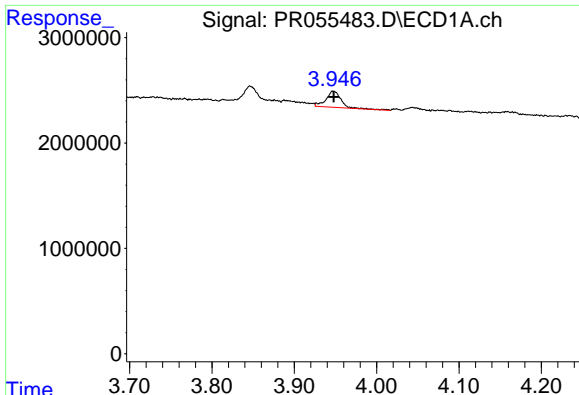
#7 AR-1016-5
 R.T.: 4.418 min
 Delta R.T.: -0.061 min
 Response: 116472
 Conc: 2.45 ng/ml



#8 AR-1221-1
 R.T.: 3.846 min
 Delta R.T.: -0.013 min
 Response: 2359750
 Conc: 50.45 ng/ml



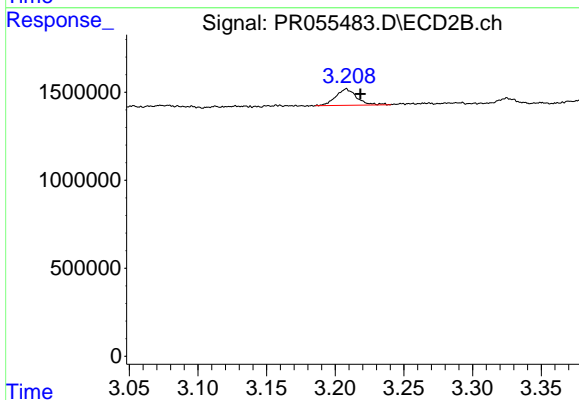
#8 AR-1221-1
 R.T.: 3.128 min
 Delta R.T.: -0.005 min
 Response: 146655
 Conc: 6.72 ng/ml



#9 AR-1221-2

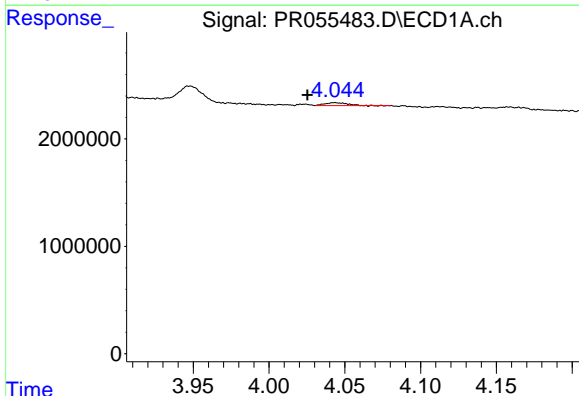
R.T.: 3.948 min
 Delta R.T.: 0.000 min
 Response: 1950921
 Conc: 60.67 ng/ml

Instrument :
 ECD_R
 ClientSampleId :



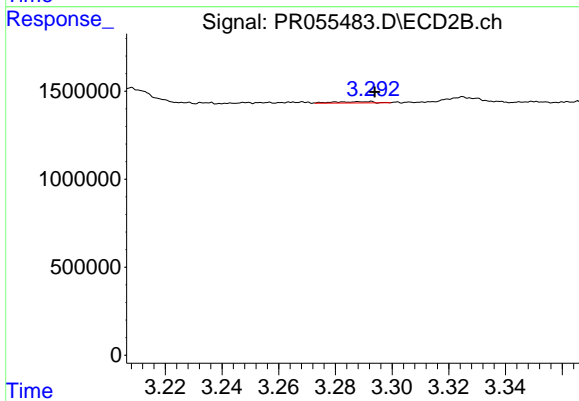
#9 AR-1221-2

R.T.: 3.208 min
 Delta R.T.: -0.010 min
 Response: 996688
 Conc: 65.19 ng/ml



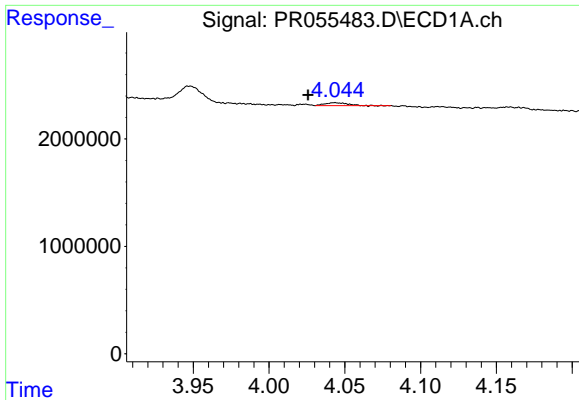
#10 AR-1221-3

R.T.: 4.044 min
 Delta R.T.: 0.018 min
 Response: 249370
 Conc: 2.43 ng/ml



#10 AR-1221-3

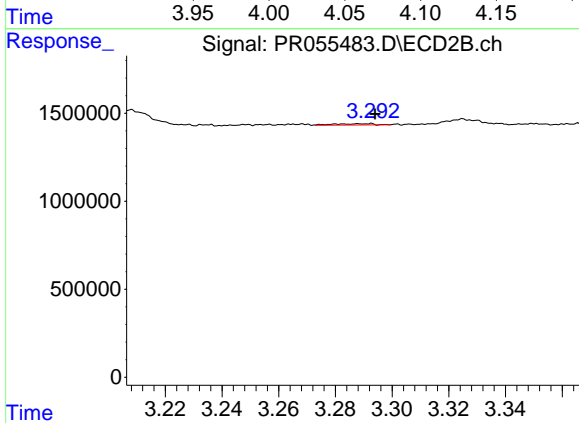
R.T.: 3.291 min
 Delta R.T.: -0.002 min
 Response: 67563
 Conc: 1.32 ng/ml



#11 AR-1232-1

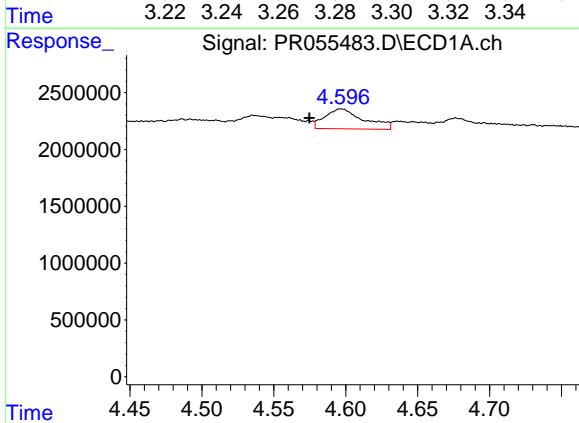
R.T.: 4.044 min
 Delta R.T.: 0.018 min
 Response: 249370
 Conc: 2.85 ng/ml

Instrument :
 ECD_R
 ClientSampleId :



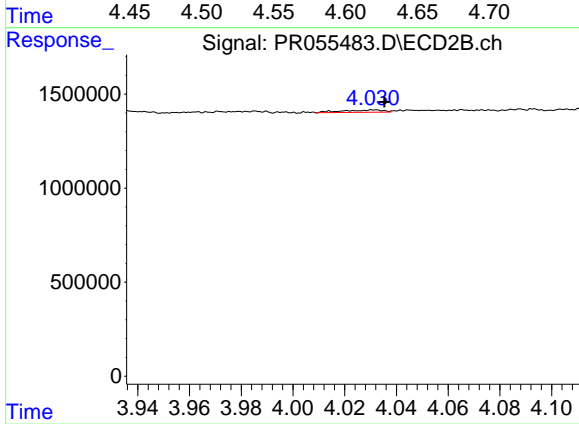
#11 AR-1232-1

R.T.: 3.291 min
 Delta R.T.: -0.003 min
 Response: 67563
 Conc: 1.58 ng/ml



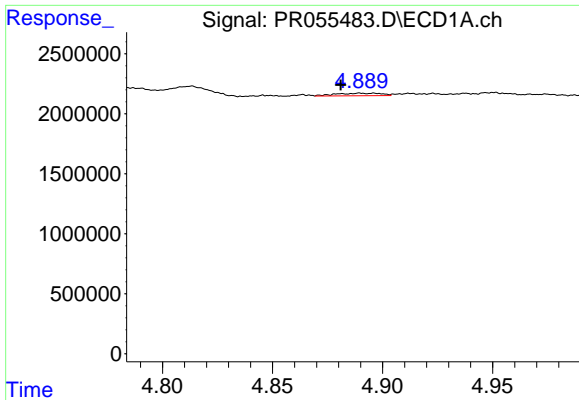
#12 AR-1232-2

R.T.: 4.597 min
 Delta R.T.: 0.022 min
 Response: 3308624
 Conc: 76.64 ng/ml



#12 AR-1232-2

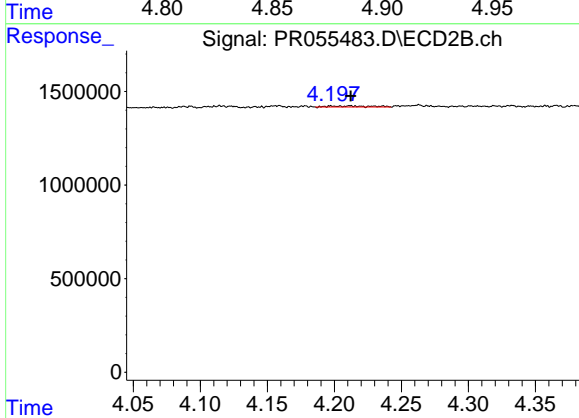
R.T.: 4.031 min
 Delta R.T.: -0.004 min
 Response: 136643
 Conc: 3.40 ng/ml



#13 AR-1232-3

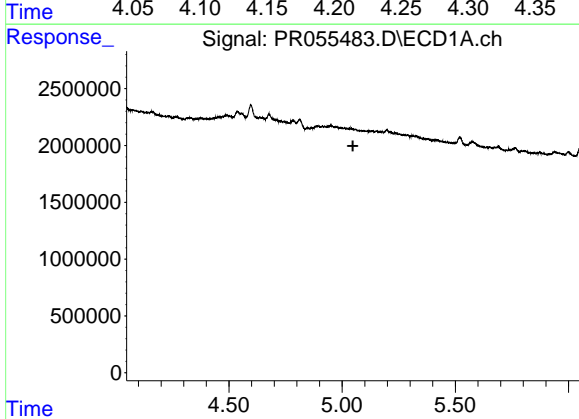
R.T.: 4.890 min
 Delta R.T.: 0.009 min
 Response: 300650
 Conc: 4.23 ng/ml

Instrument :
 ECD_R
 ClientSampleId :



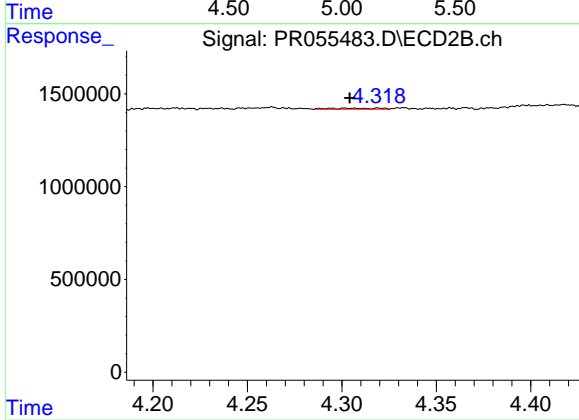
#13 AR-1232-3

R.T.: 4.211 min
 Delta R.T.: 0.000 min
 Response: 112690
 Conc: 5.36 ng/ml



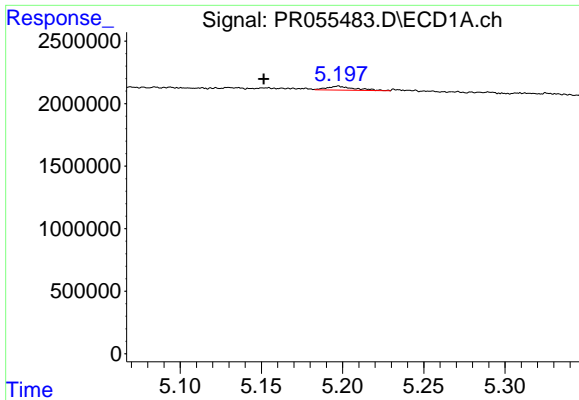
#14 AR-1232-4

R.T.: 0.000 min
 Exp R.T. : 5.047 min
 Response: 0
 Conc: N.D.



#14 AR-1232-4

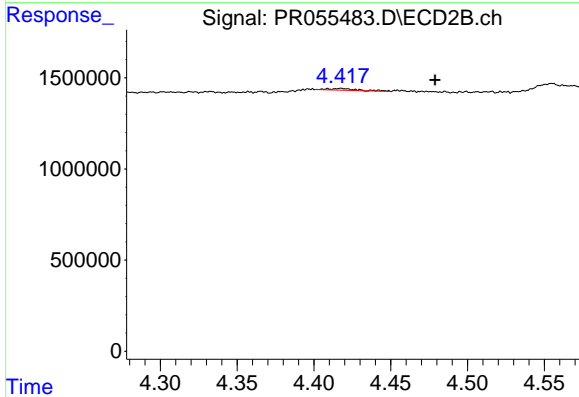
R.T.: 4.320 min
 Delta R.T.: 0.015 min
 Response: 99731
 Conc: 5.46 ng/ml



#15 AR-1232-5

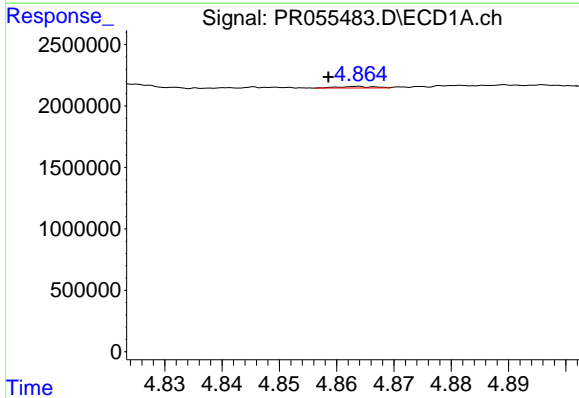
R.T.: 5.197 min
 Delta R.T.: 0.046 min
 Response: 352623
 Conc: 14.12 ng/ml

Instrument :
 ECD_R
 ClientSampleId :



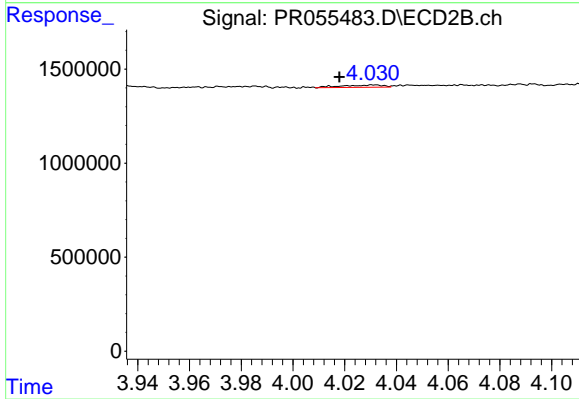
#15 AR-1232-5

R.T.: 4.418 min
 Delta R.T.: -0.061 min
 Response: 116472
 Conc: 5.72 ng/ml



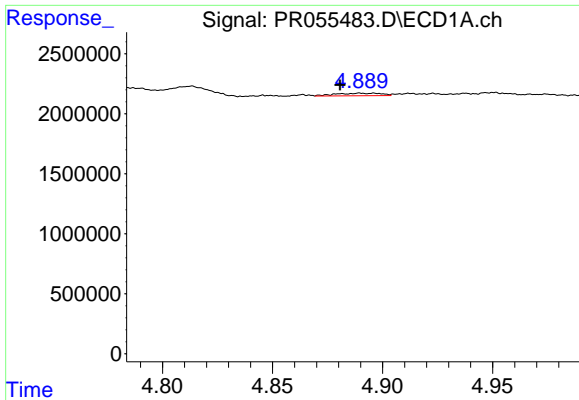
#16 AR-1242-1

R.T.: 4.864 min
 Delta R.T.: 0.005 min
 Response: 50890
 Conc: 0.55 ng/ml



#16 AR-1242-1

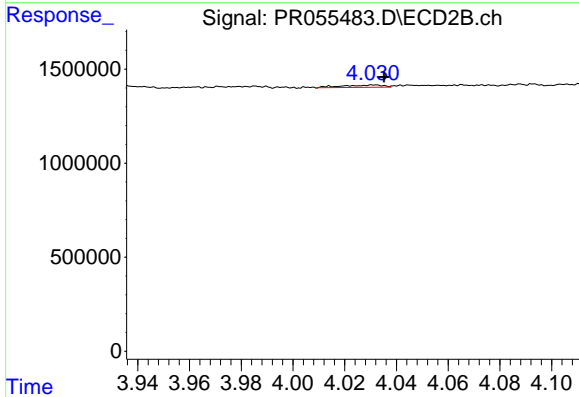
R.T.: 4.031 min
 Delta R.T.: 0.013 min
 Response: 136643
 Conc: 2.43 ng/ml



#17 AR-1242-2

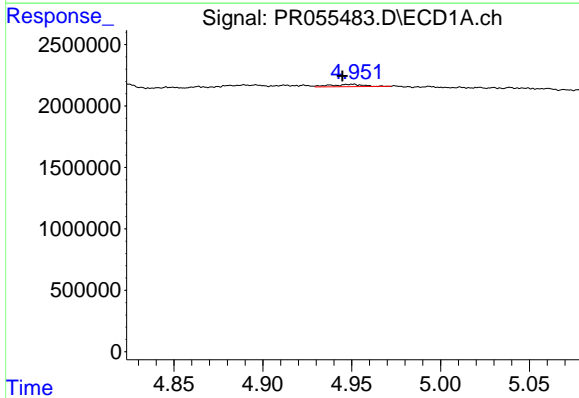
R.T.: 4.890 min
 Delta R.T.: 0.009 min
 Response: 300650
 Conc: 2.24 ng/ml

Instrument :
 ECD_R
 ClientSampleId :



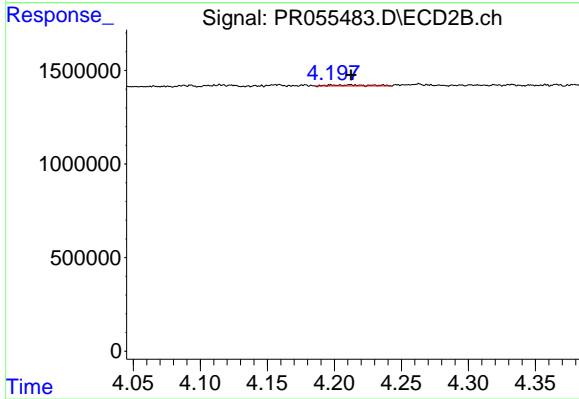
#17 AR-1242-2

R.T.: 4.031 min
 Delta R.T.: -0.004 min
 Response: 136643
 Conc: 1.76 ng/ml



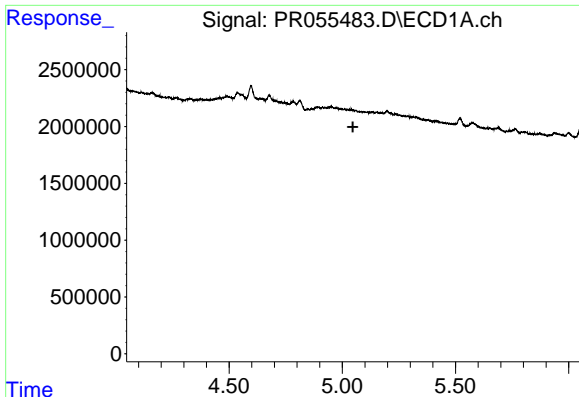
#18 AR-1242-3

R.T.: 4.950 min
 Delta R.T.: 0.006 min
 Response: 235859
 Conc: 2.85 ng/ml



#18 AR-1242-3

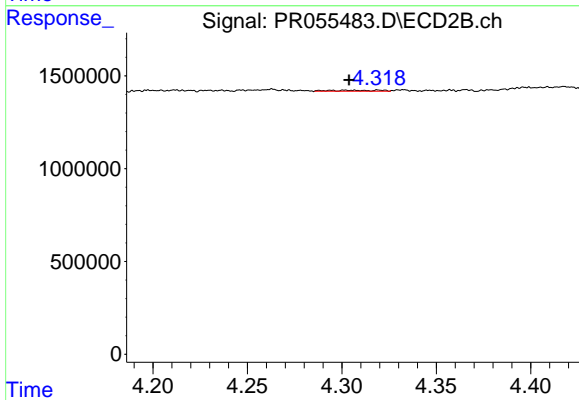
R.T.: 4.211 min
 Delta R.T.: 0.000 min
 Response: 112690
 Conc: 2.70 ng/ml



#19 AR-1242-4

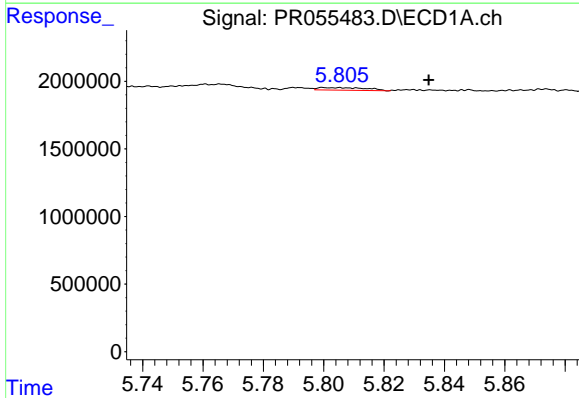
R.T.: 0.000 min
 Exp R.T.: 5.047 min
 Response: 0
 Conc: N.D.

Instrument :
 ECD_R
 ClientSampleId :



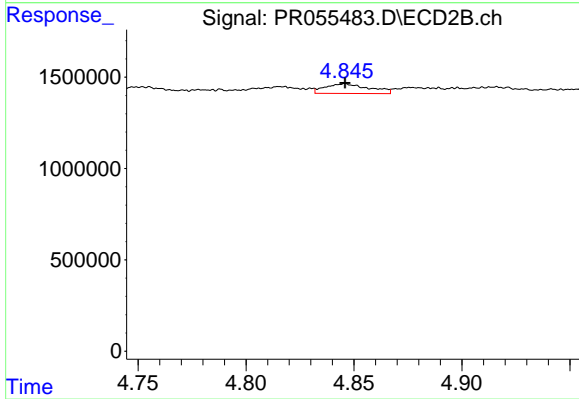
#19 AR-1242-4

R.T.: 4.320 min
 Delta R.T.: 0.016 min
 Response: 99731
 Conc: 2.58 ng/ml



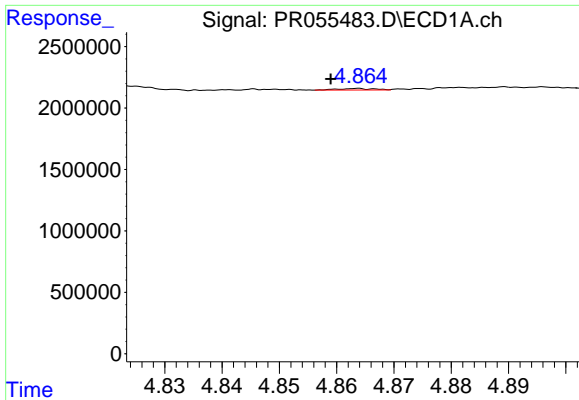
#20 AR-1242-5

R.T.: 5.805 min
 Delta R.T.: -0.030 min
 Response: 212529
 Conc: 3.68 ng/ml



#20 AR-1242-5

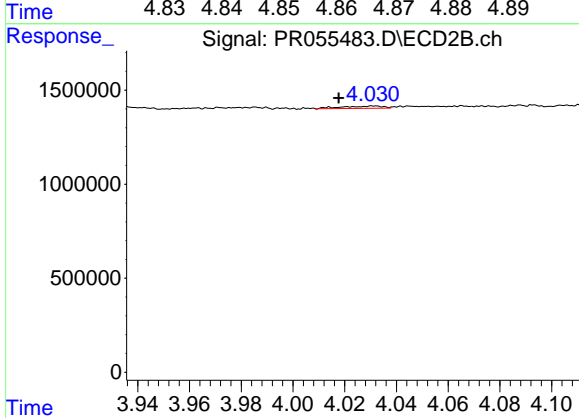
R.T.: 4.846 min
 Delta R.T.: 0.000 min
 Response: 751705
 Conc: 14.59 ng/ml



#21 AR-1248-1

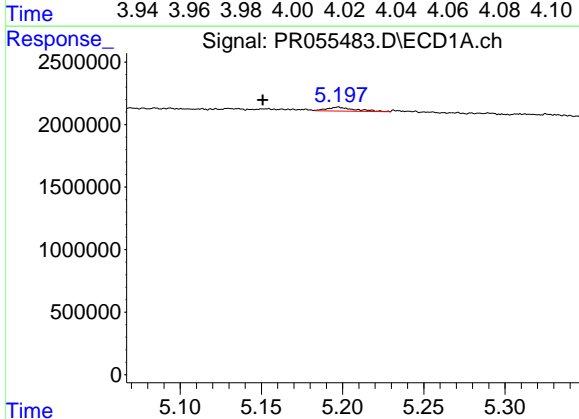
R.T.: 4.864 min
 Delta R.T.: 0.005 min
 Response: 50890
 Conc: 0.73 ng/ml

Instrument :
 ECD_R
 ClientSampleId :



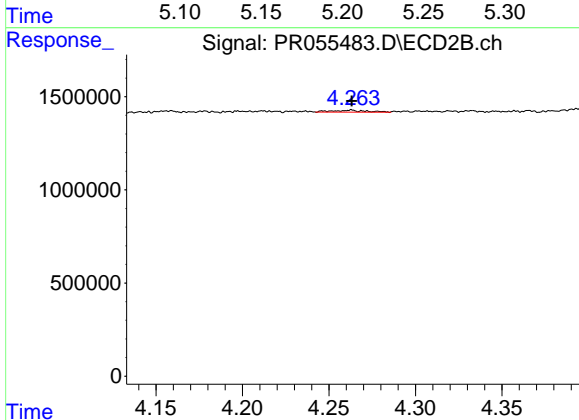
#21 AR-1248-1

R.T.: 4.031 min
 Delta R.T.: 0.014 min
 Response: 136643
 Conc: 3.31 ng/ml



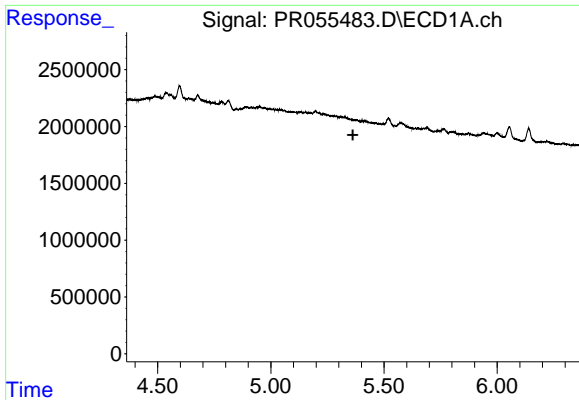
#22 AR-1248-2

R.T.: 5.197 min
 Delta R.T.: 0.047 min
 Response: 352623
 Conc: 4.00 ng/ml



#22 AR-1248-2

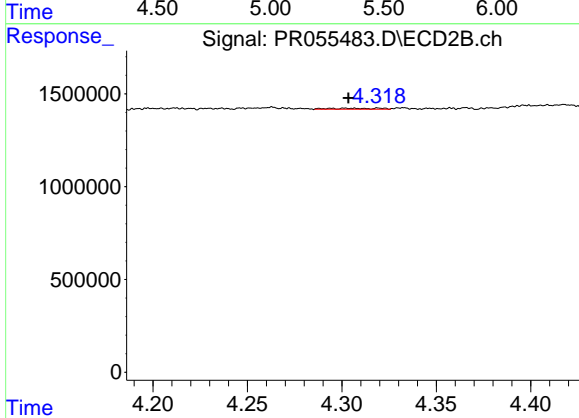
R.T.: 4.263 min
 Delta R.T.: 0.000 min
 Response: 140383
 Conc: 2.50 ng/ml



#23 AR-1248-3

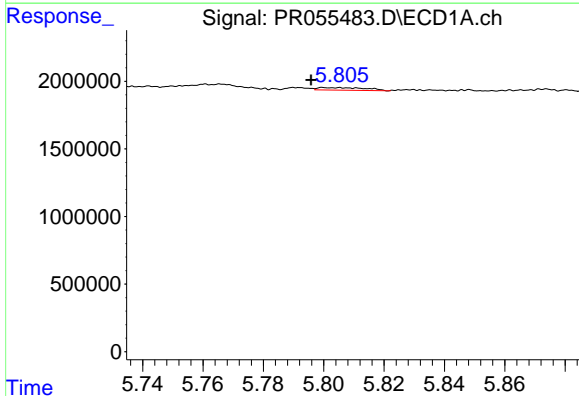
R.T.: 0.000 min
 Exp R.T.: 5.363 min
 Response: 0
 Conc: N.D.

Instrument :
 ECD_R
 ClientSampleId :



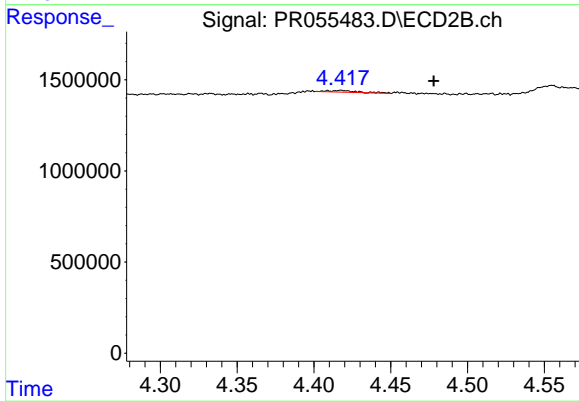
#23 AR-1248-3

R.T.: 4.320 min
 Delta R.T.: 0.016 min
 Response: 99731
 Conc: 1.74 ng/ml



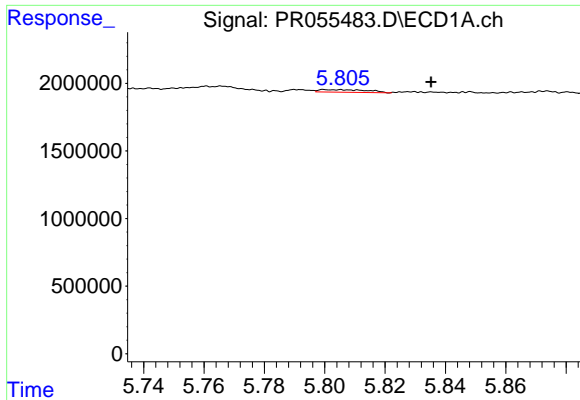
#24 AR-1248-4

R.T.: 5.805 min
 Delta R.T.: 0.009 min
 Response: 212529
 Conc: 2.21 ng/ml



#24 AR-1248-4

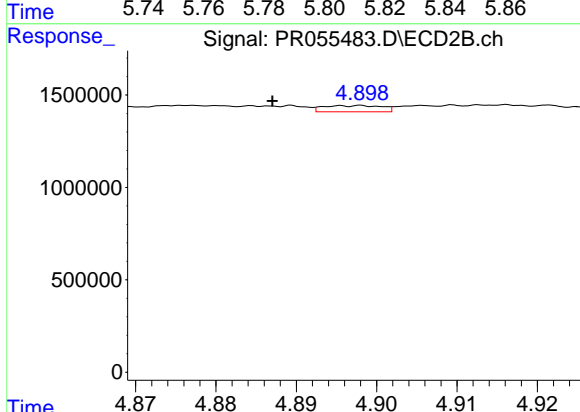
R.T.: 4.418 min
 Delta R.T.: -0.060 min
 Response: 116472
 Conc: 1.68 ng/ml



#25 AR-1248-5

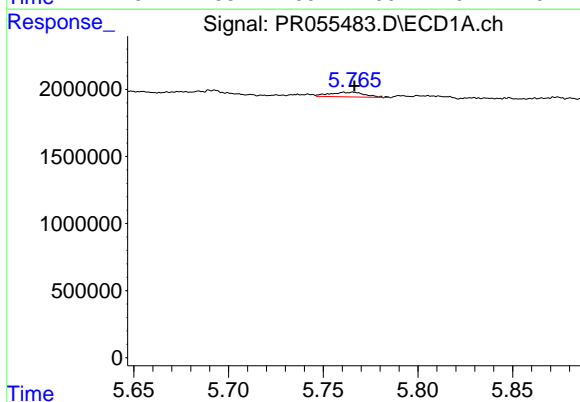
R.T.: 5.805 min
 Delta R.T.: -0.030 min
 Response: 212529
 Conc: 2.28 ng/ml

Instrument :
 ECD_R
 ClientSampleId :



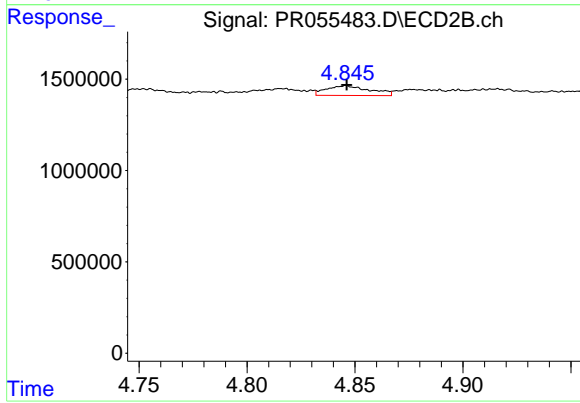
#25 AR-1248-5

R.T.: 4.897 min
 Delta R.T.: 0.010 min
 Response: 170383
 Conc: 2.40 ng/ml



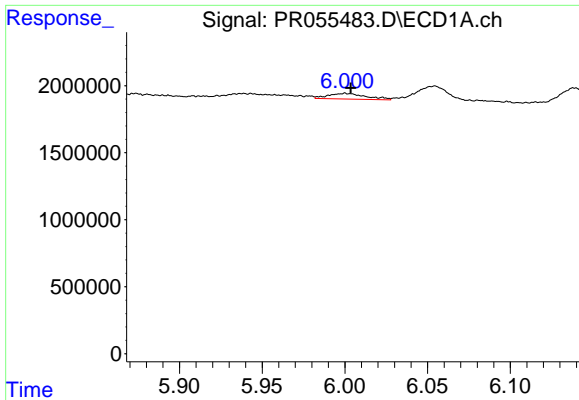
#26 AR-1254-1

R.T.: 5.761 min
 Delta R.T.: -0.005 min
 Response: 455539
 Conc: 4.70 ng/ml



#26 AR-1254-1

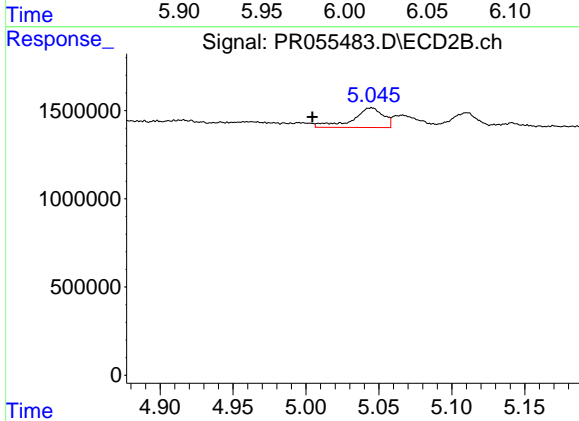
R.T.: 4.846 min
 Delta R.T.: 0.000 min
 Response: 751705
 Conc: 7.26 ng/ml



#27 AR-1254-2

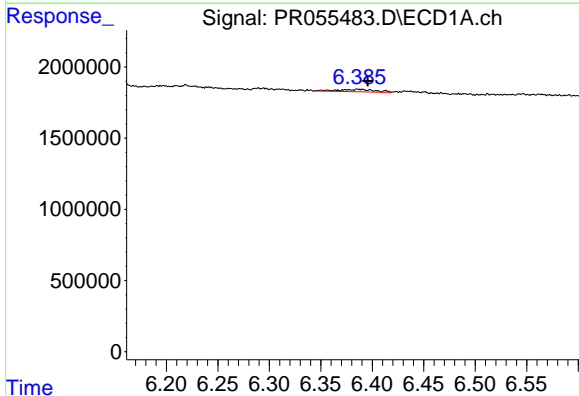
R.T.: 6.000 min
 Delta R.T.: -0.003 min
 Response: 680684
 Conc: 4.90 ng/ml

Instrument :
 ECD_R
 ClientSampleId :



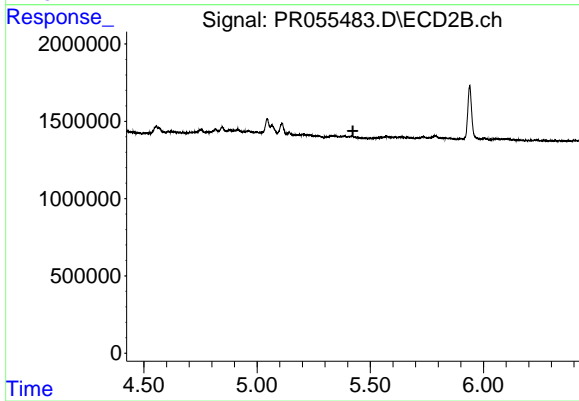
#27 AR-1254-2

R.T.: 5.045 min
 Delta R.T.: 0.040 min
 Response: 1654615
 Conc: 18.40 ng/ml



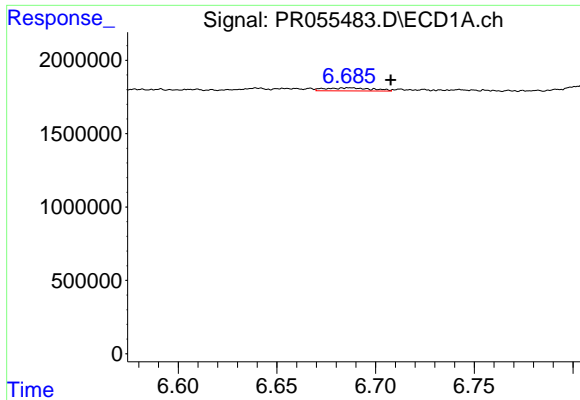
#28 AR-1254-3

R.T.: 6.386 min
 Delta R.T.: -0.010 min
 Response: 440567
 Conc: 3.18 ng/ml



#28 AR-1254-3

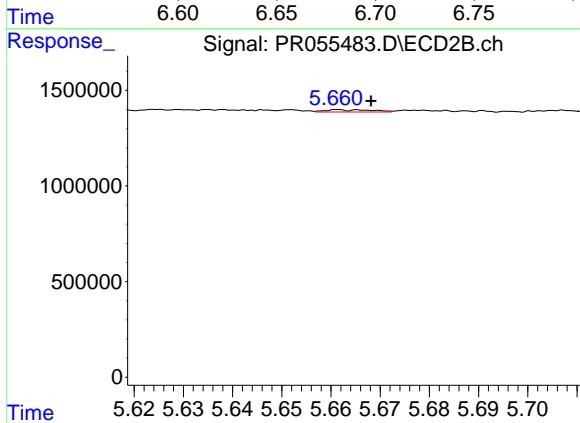
R.T.: 0.000 min
 Exp R.T. : 5.423 min
 Response: 0
 Conc: N.D.



#29 AR-1254-4

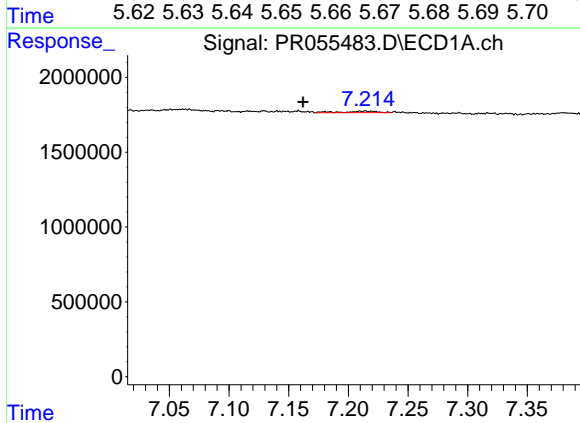
R.T.: 6.687 min
 Delta R.T.: -0.021 min
 Response: 343358
 Conc: 3.39 ng/ml

Instrument :
 ECD_R
 ClientSampleId :



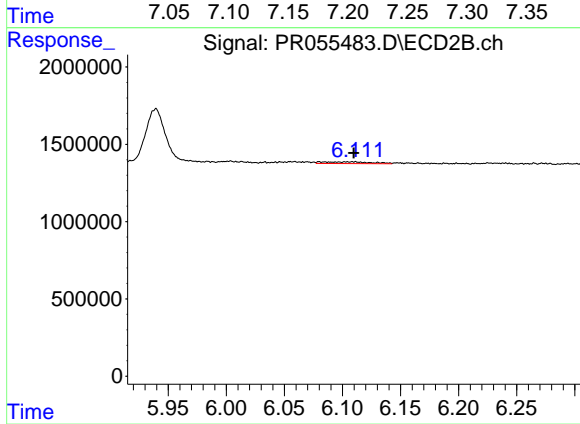
#29 AR-1254-4

R.T.: 5.666 min
 Delta R.T.: -0.002 min
 Response: 75021
 Conc: 0.80 ng/ml



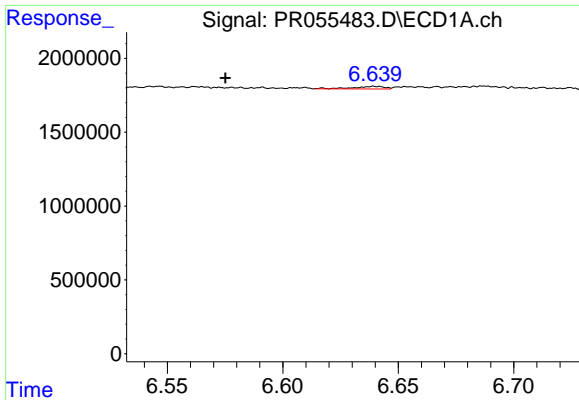
#30 AR-1254-5

R.T.: 7.214 min
 Delta R.T.: 0.052 min
 Response: 199520
 Conc: 1.91 ng/ml



#30 AR-1254-5

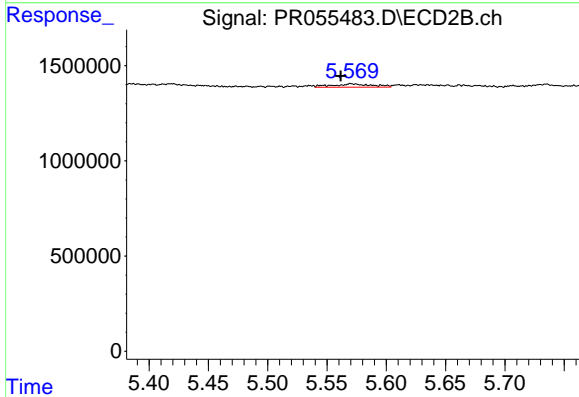
R.T.: 6.110 min
 Delta R.T.: 0.000 min
 Response: 307160
 Conc: 2.32 ng/ml



#31 AR-1260-1

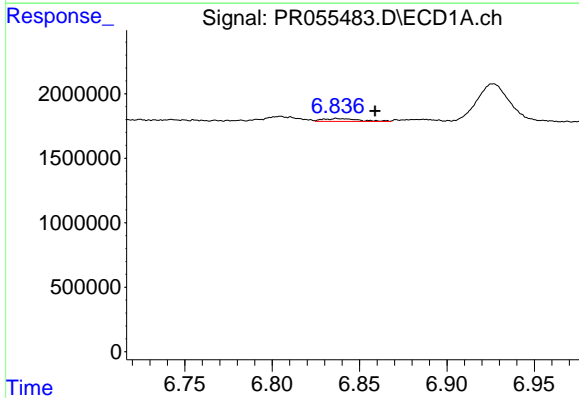
R.T.: 6.640 min
 Delta R.T.: 0.065 min
 Response: 161881
 Conc: 1.80 ng/ml

Instrument :
 ECD_R
 ClientSampleId :



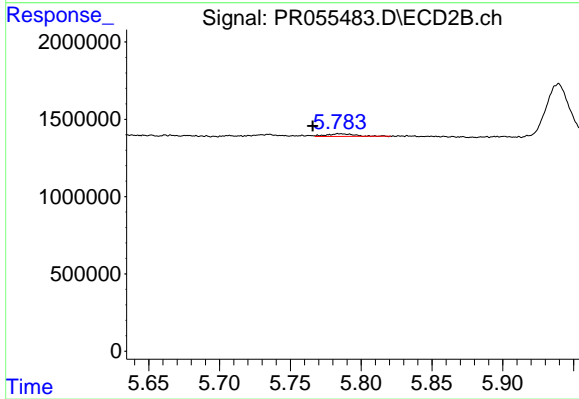
#31 AR-1260-1

R.T.: 5.570 min
 Delta R.T.: 0.008 min
 Response: 408200
 Conc: 4.76 ng/ml



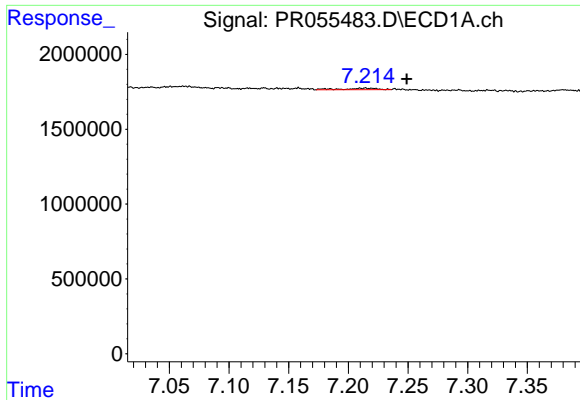
#32 AR-1260-2

R.T.: 6.837 min
 Delta R.T.: -0.022 min
 Response: 317282
 Conc: 3.05 ng/ml



#32 AR-1260-2

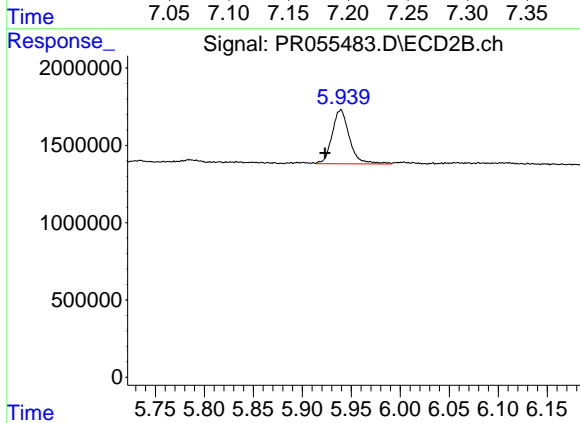
R.T.: 5.785 min
 Delta R.T.: 0.019 min
 Response: 214853
 Conc: 2.06 ng/ml



#33 AR-1260-3

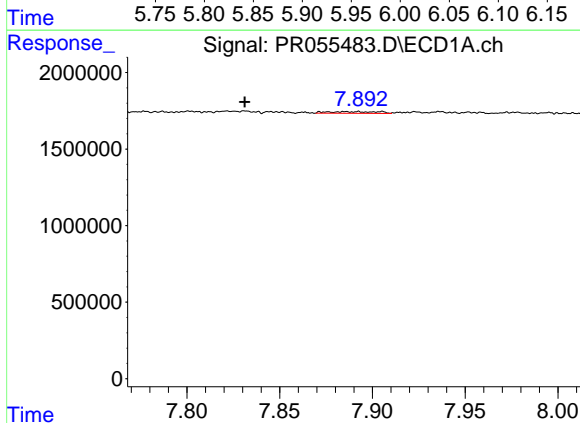
R.T.: 7.214 min
 Delta R.T.: -0.035 min
 Response: 199520
 Conc: 2.54 ng/ml

Instrument :
 ECD_R
 ClientSampleId :



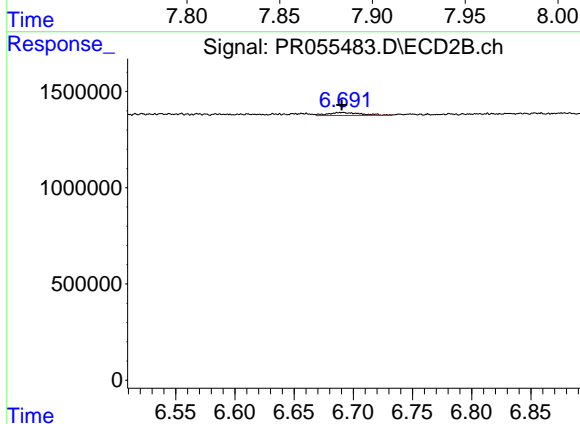
#33 AR-1260-3

R.T.: 5.939 min
 Delta R.T.: 0.016 min
 Response: 4286231
 Conc: 43.74 ng/ml



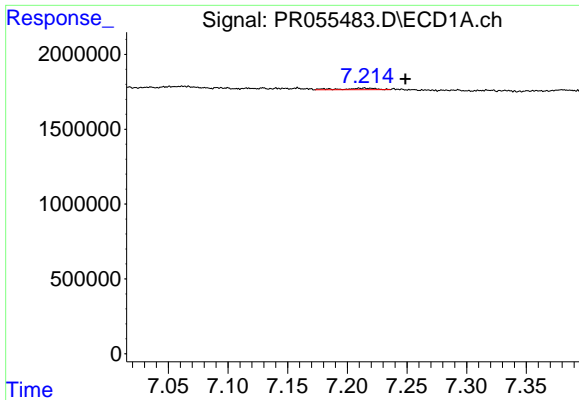
#35 AR-1260-5

R.T.: 7.893 min
 Delta R.T.: 0.061 min
 Response: 205435
 Conc: 1.19 ng/ml



#35 AR-1260-5

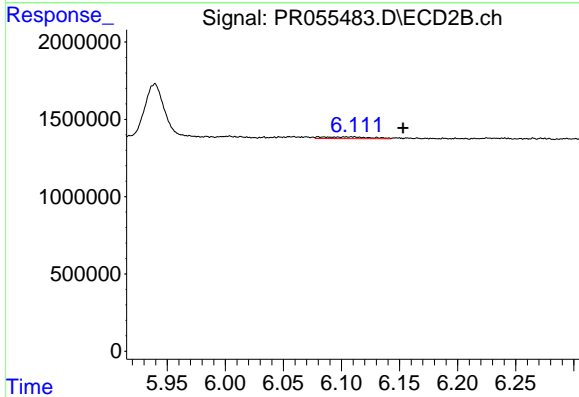
R.T.: 6.690 min
 Delta R.T.: 0.000 min
 Response: 310905
 Conc: 1.51 ng/ml



#36 AR-1262-1

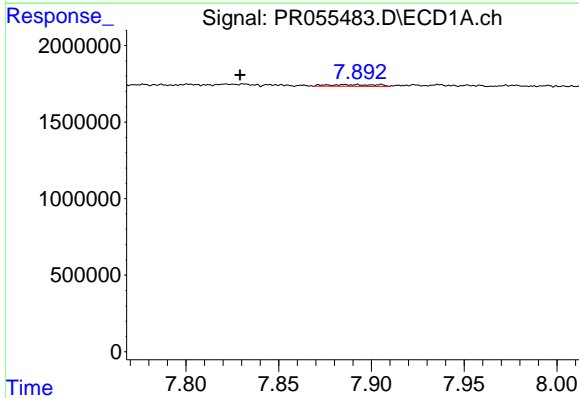
R.T.: 7.214 min
 Delta R.T.: -0.034 min
 Response: 199520
 Conc: 1.59 ng/ml

Instrument :
 ECD_R
 ClientSampleId :



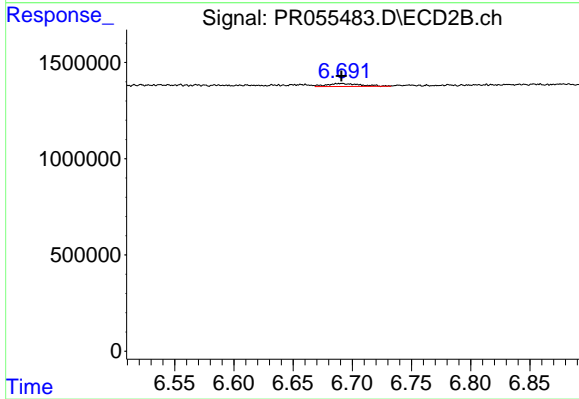
#36 AR-1262-1

R.T.: 6.110 min
 Delta R.T.: -0.043 min
 Response: 307160
 Conc: 2.28 ng/ml



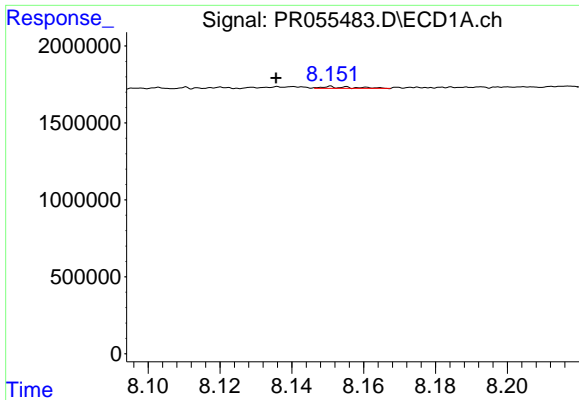
#37 AR-1262-2

R.T.: 7.893 min
 Delta R.T.: 0.063 min
 Response: 205435
 Conc: 0.93 ng/ml



#37 AR-1262-2

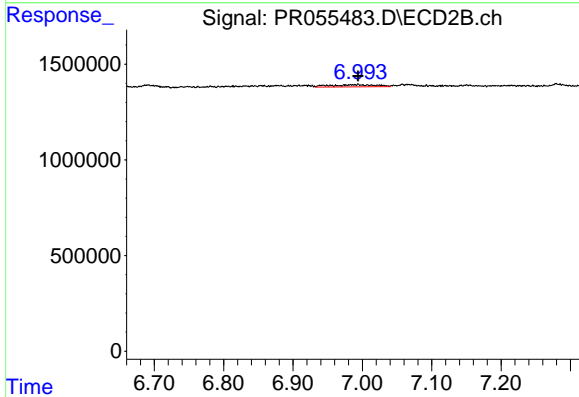
R.T.: 6.690 min
 Delta R.T.: 0.000 min
 Response: 310905
 Conc: 1.27 ng/ml



#38 AR-1262-3

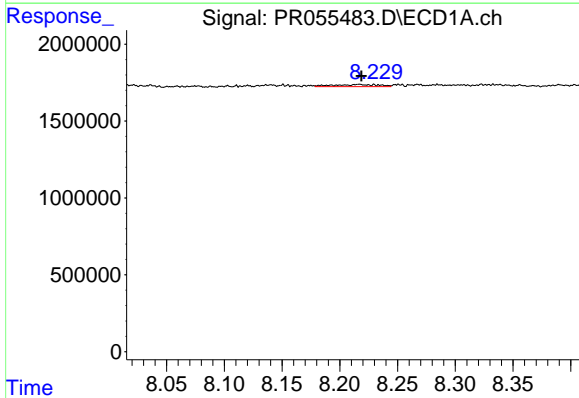
R.T.: 8.151 min
 Delta R.T.: 0.015 min
 Response: 68463
 Conc: 0.45 ng/ml

Instrument :
 ECD_R
 ClientSampleId :



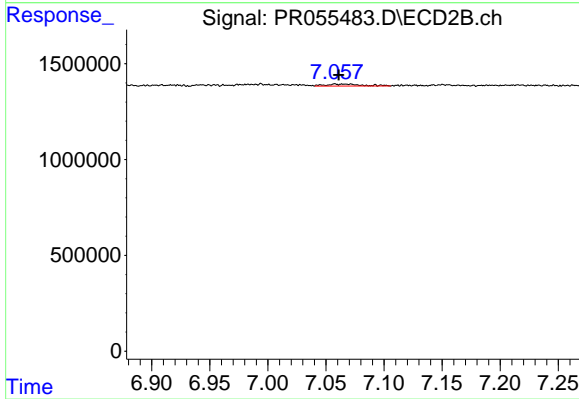
#38 AR-1262-3

R.T.: 6.994 min
 Delta R.T.: 0.000 min
 Response: 490495
 Conc: 4.96 ng/ml



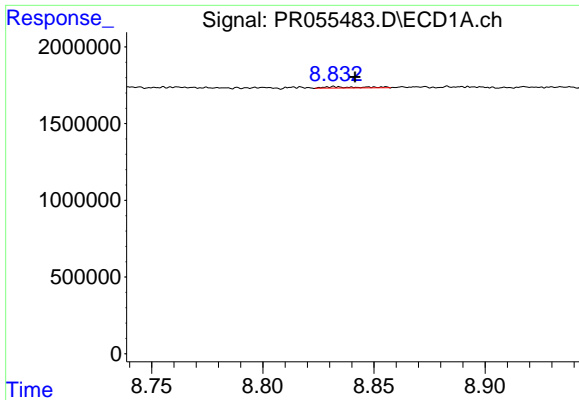
#39 AR-1262-4

R.T.: 8.217 min
 Delta R.T.: -0.002 min
 Response: 366627
 Conc: 4.86 ng/ml



#39 AR-1262-4

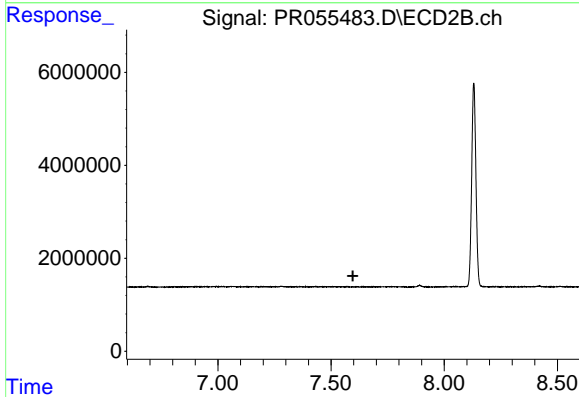
R.T.: 7.067 min
 Delta R.T.: 0.006 min
 Response: 221813
 Conc: 1.21 ng/ml



#40 AR-1262-5

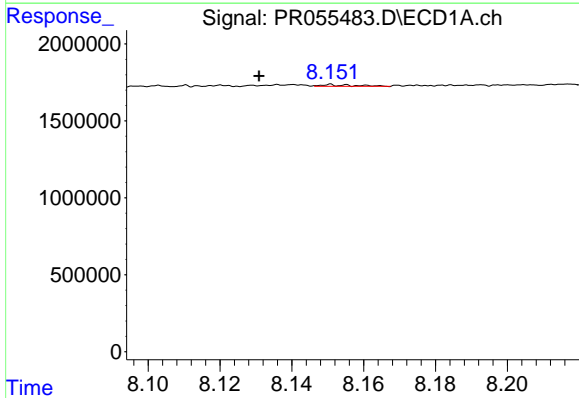
R.T.: 8.832 min
 Delta R.T.: -0.009 min
 Response: 95442
 Conc: 1.14 ng/ml

Instrument :
 ECD_R
 ClientSampleId :



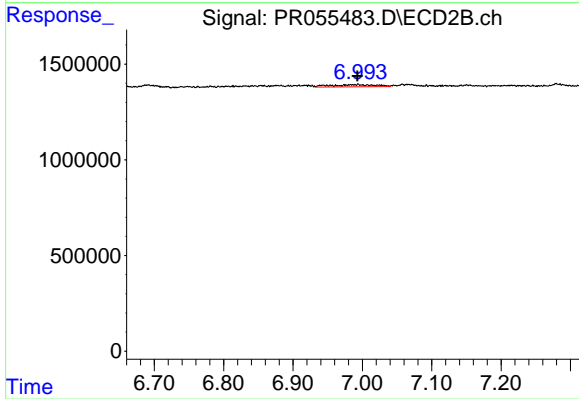
#40 AR-1262-5

R.T.: 0.000 min
 Exp R.T. : 7.597 min
 Response: 0
 Conc: N.D.



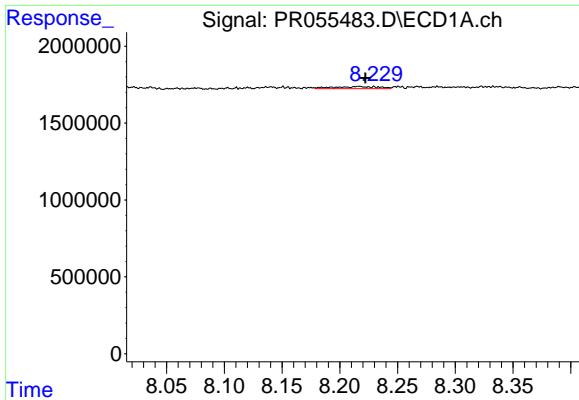
#41 AR-1268-1

R.T.: 8.151 min
 Delta R.T.: 0.020 min
 Response: 68463
 Conc: 0.27 ng/ml



#41 AR-1268-1

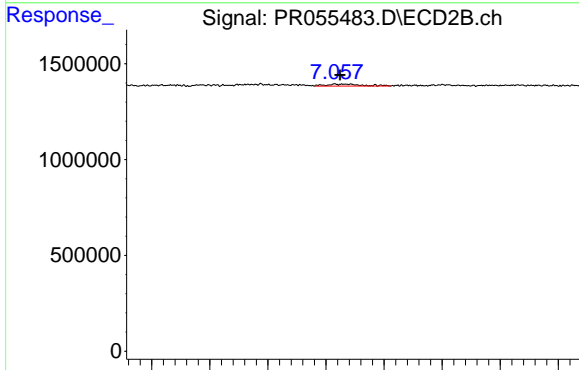
R.T.: 6.994 min
 Delta R.T.: 0.001 min
 Response: 490495
 Conc: 1.73 ng/ml



#42 AR-1268-2

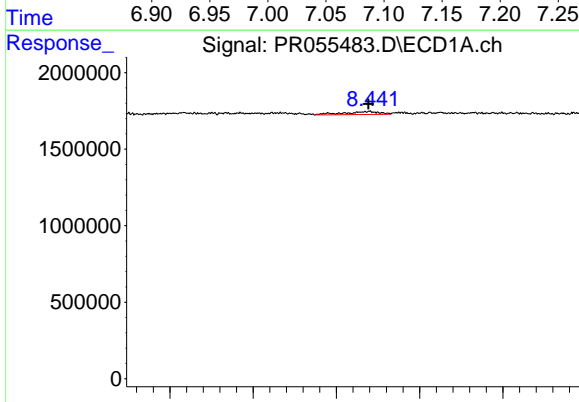
R.T.: 8.217 min
 Delta R.T.: -0.005 min
 Response: 366627
 Conc: 1.57 ng/ml

Instrument :
 ECD_R
 ClientSampleId :



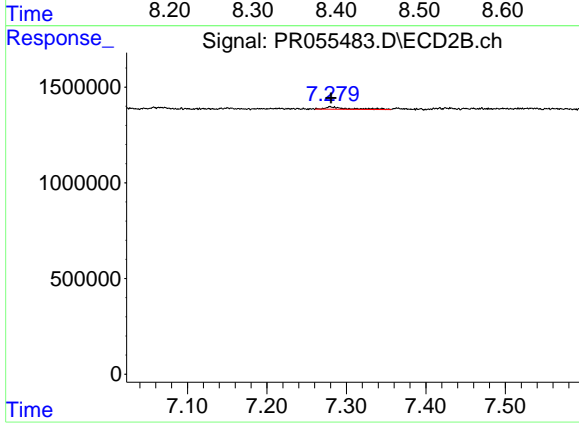
#42 AR-1268-2

R.T.: 7.067 min
 Delta R.T.: 0.005 min
 Response: 221813
 Conc: 0.87 ng/ml



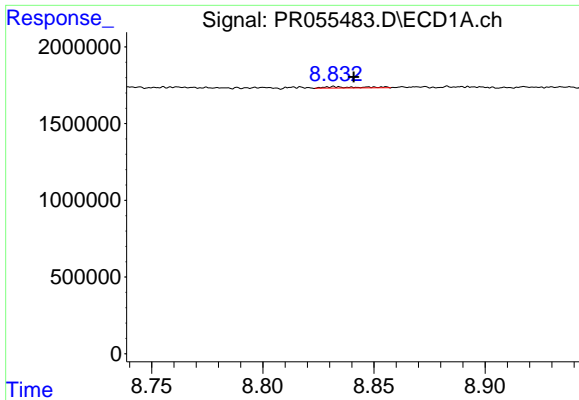
#43 AR-1268-3

R.T.: 8.440 min
 Delta R.T.: 0.002 min
 Response: 580918
 Conc: 2.97 ng/ml



#43 AR-1268-3

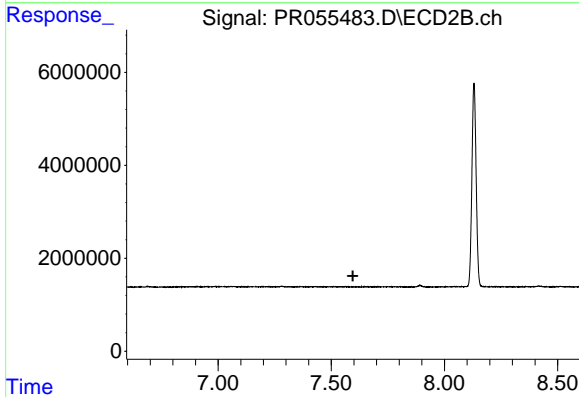
R.T.: 7.280 min
 Delta R.T.: 0.000 min
 Response: 262114
 Conc: 1.21 ng/ml



#44 AR-1268-4

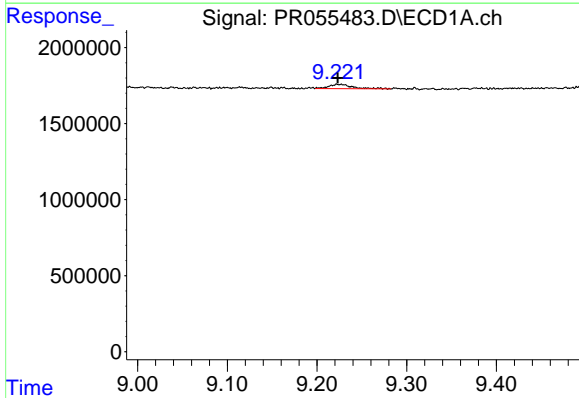
R.T.: 8.832 min
 Delta R.T.: -0.008 min
 Response: 95442
 Conc: 1.04 ng/ml

Instrument :
 ECD_R
 ClientSampleId :



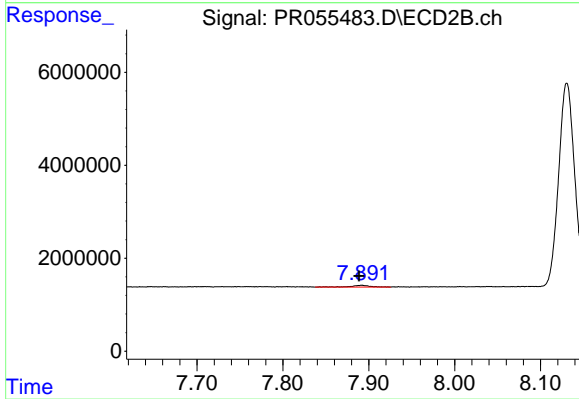
#44 AR-1268-4

R.T.: 0.000 min
 Exp R.T. : 7.596 min
 Response: 0
 Conc: N.D.



#45 AR-1268-5

R.T.: 9.227 min
 Delta R.T.: 0.004 min
 Response: 546330
 Conc: 0.86 ng/ml



#45 AR-1268-5

R.T.: 7.892 min
 Delta R.T.: 0.003 min
 Response: 533978
 Conc: 0.76 ng/ml