

Data Path : Z:\pestpcbsrv\HPCHEM1\ECD_R\Data\PR072920\
 Data File : PR046570.D
 Signal(s) : Signal #1: ECD1A.ch Signal #2: ECD2B.ch
 Acq On : 29 Jul 2020 11:24
 Operator : AJ\MA
 Sample : L3439-04
 Misc :
 ALS Vial : 10 Sample Multiplier: 1

Instrument :
 ECD_R
 ClientSampled :

Integration File signal 1: autoint1.e
 Integration File signal 2: autoint2.e
 Quant Time: Jul 30 01:38:04 2020
 Quant Method : Z:\pestpcbsrv\HPCHEM1\ECD_R\Method\PR072820.M
 Quant Title : GC EXTRACTABLES
 QLast Update : Wed Jul 29 03:56:12 2020
 Response via : Initial Calibration
 Integrator: ChemStation

Volume Inj. : 2 µl
 Signal #1 Phase : ZB-MR1 Signal #2 Phase: ZB-MR2
 Signal #1 Info : 30Mx0.32mmx 0.50µ Signal #2 Info : 30M x 0.32mm x 0.25µm

Compound	RT#1	RT#2	Resp#1	Resp#2	ng/ml	ng/ml

System Monitoring Compounds						
1) SA Tetrachlo...	4.766	3.991	4131402	24455037	2.611	2.444
2) SA Decachlor...	10.769	9.121	10455282	88503028	4.719	5.872
Target Compounds						
3) L1 AR-1016-1	5.956	5.089	2276031	15446045	33.397	33.801
4) L1 AR-1016-2	5.979	5.108	3691620	20862749	38.113	32.734
6) L1 AR-1016-4	0.000	5.329	0	13737680	N.D.	50.887 #
7) L1 AR-1016-5	6.437	5.544	1301079	10741036	26.260	29.602
12) L3 AR-1232-2	0.000	5.108	0	20862749	N.D.	98.514 #
13) L3 AR-1232-3	5.979	0.000	3691620	0	115.524	N.D. #
14) L3 AR-1232-4	0.000	5.370	0	14233283	N.D.	138.819 #
15) L3 AR-1232-5	0.000	5.544	0	10741036	N.D.	88.081 #
16) L4 AR-1242-1	5.956	5.089	2276031	15446045	53.276	54.384
17) L4 AR-1242-2	5.979	5.108	3691620	20862749	61.771	53.005
19) L4 AR-1242-4	0.000	5.370	0	14233283	N.D.	67.666 #
20) L4 AR-1242-5	6.883	5.897	3720132	16933615	95.700	54.562 #
21) L5 AR-1248-1	5.956	5.089	2276031	15446045	62.029	64.887
22) L5 AR-1248-2	0.000	5.329	0	13737680	N.D.	43.209 #
23) L5 AR-1248-3	6.437	5.370	1301079	14233283	22.291	43.383 #
24) L5 AR-1248-4	6.845	5.544	2672535	10741036	36.688	25.266 #
25) L5 AR-1248-5	6.883	5.944	3720132	49773459	53.501	109.747 #
26) L6 AR-1254-1	6.816	5.897	3677443	16933615	47.180	22.614 #
27) L6 AR-1254-2	7.035	6.048	5623373	25568708	45.111	38.208
28) L6 AR-1254-3	7.406	6.453	2294320	89239152	16.706	75.662 #
29) L6 AR-1254-4	7.697	0.000	4387001	0	41.434	N.D. #
30) L6 AR-1254-5	8.116	7.106	3199057	21449842	28.141	20.073 #
31) L7 AR-1260-1	7.567	6.588	2369784	21653356	24.085	28.126
32) L7 AR-1260-2	7.825	6.774	5347026	26873819	44.526	27.730 #
33) L7 AR-1260-3	8.188	6.934	1733449	15237948	19.089	17.106
35) L7 AR-1260-5	8.780	7.647	1976293	10573476	8.784	5.609 #
36) L8 AR-1262-1	8.188	7.106	1733449	21449842	14.063	40.538 #
37) L8 AR-1262-2	8.780	7.647	1976293	10573476	8.306	5.159 #
38) L8 AR-1262-3	0.000	7.903f	0	26655007	N.D.	32.797 #
39) L8 AR-1262-4	0.000	8.003	0	29045587	N.D.	20.075 #
41) L9 AR-1268-1	0.000	7.903f	0	26655007	N.D.	11.403 #
42) L9 AR-1268-2	0.000	8.003	0	29045587	N.D.	13.136 #

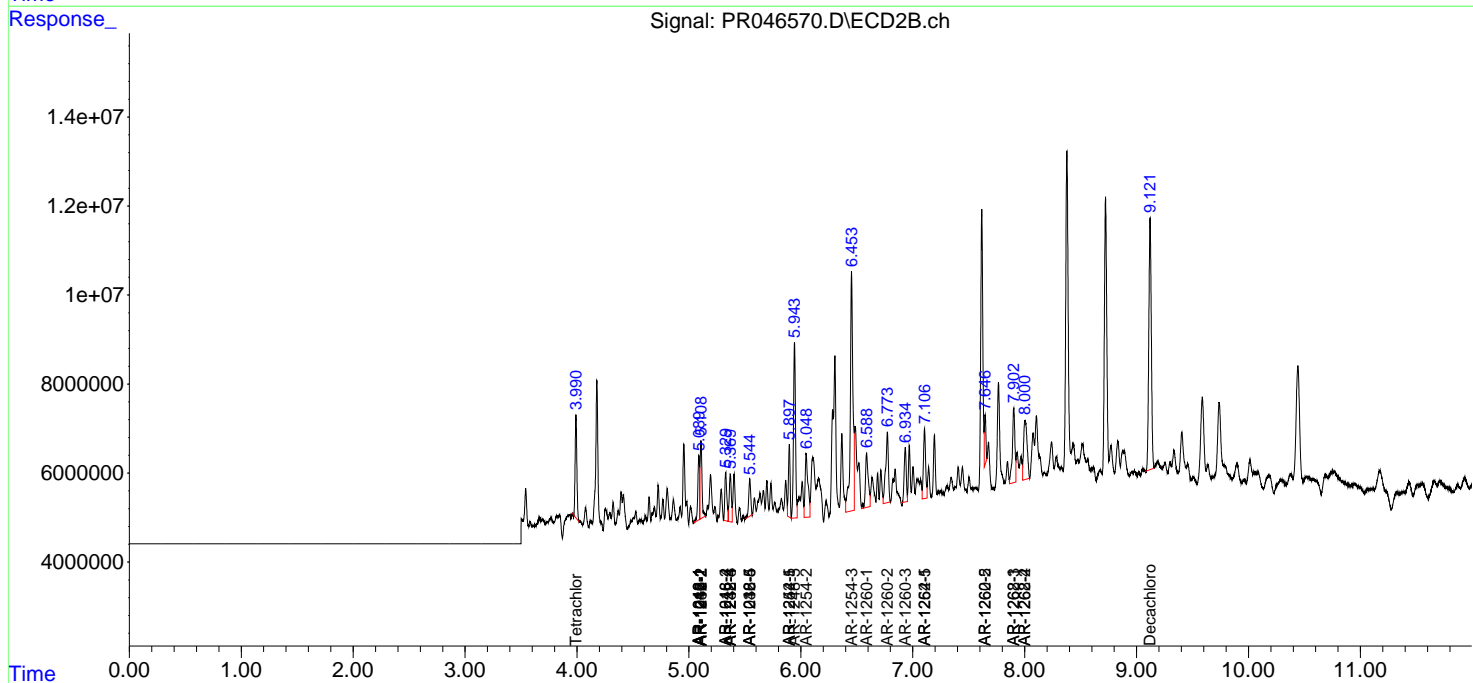
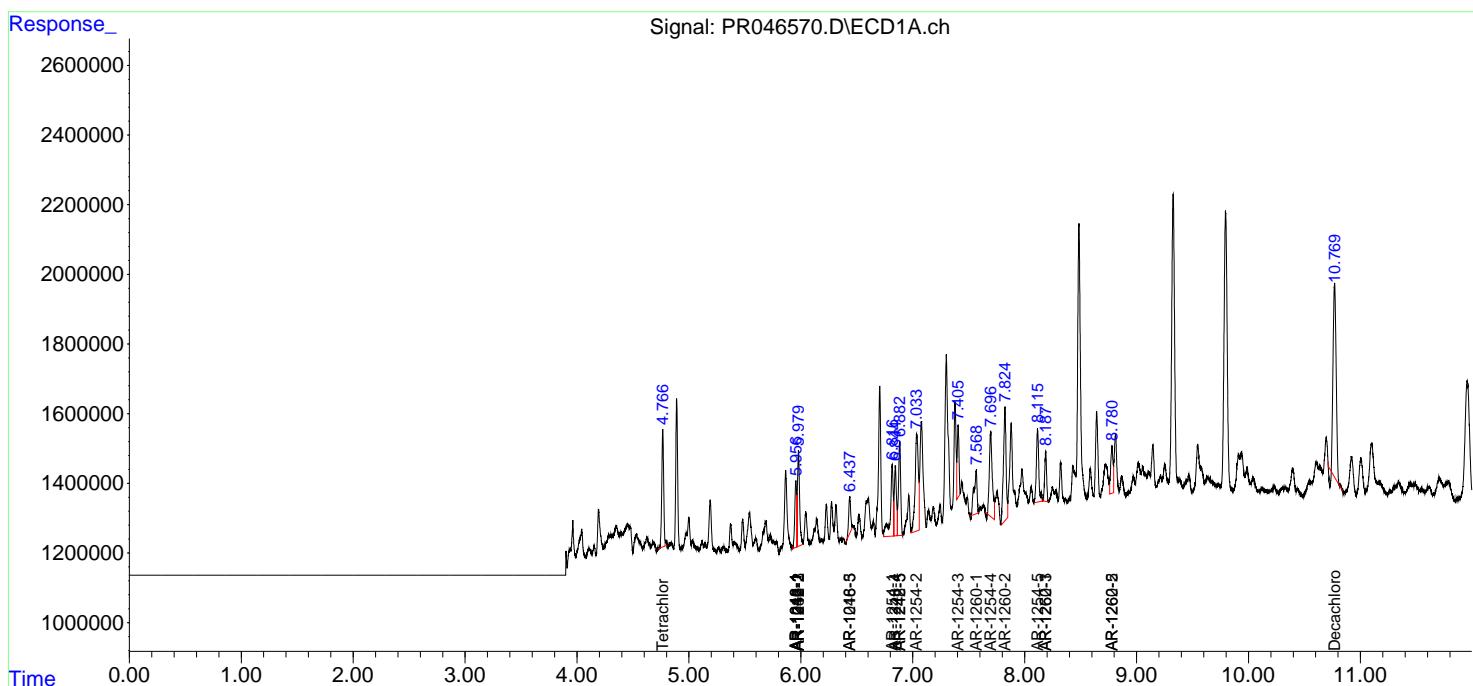
(f)=RT Delta > 1/2 Window (#)=Amounts differ by > 25% (m)=manual int.

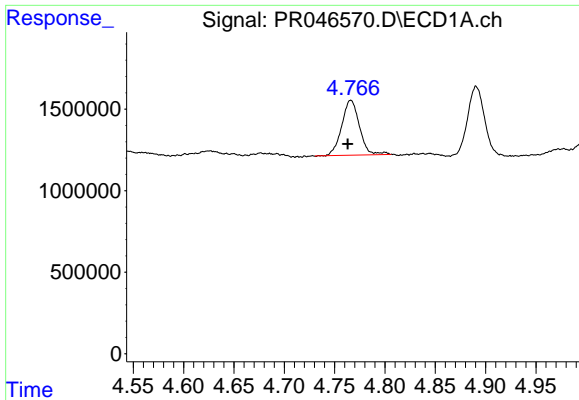
Data Path : Z:\pestpcbsrv\HPCHEM1\ECD_R\Data\PR072920\
 Data File : PR046570.D
 Signal(s) : Signal #1: ECD1A.ch Signal #2: ECD2B.ch
 Acq On : 29 Jul 2020 11:24
 Operator : AJ\MA
 Sample : L3439-04
 Misc :
 ALS Vial : 10 Sample Multiplier: 1

Instrument :
 ECD_R
 ClientSampled :

Integration File signal 1: autoint1.e
 Integration File signal 2: autoint2.e
 Quant Time: Jul 30 01:38:04 2020
 Quant Method : Z:\pestpcbsrv\HPCHEM1\ECD_R\Method\PR072820.M
 Quant Title : GC EXTRACTABLES
 QLast Update : Wed Jul 29 03:56:12 2020
 Response via : Initial Calibration
 Integrator: ChemStation

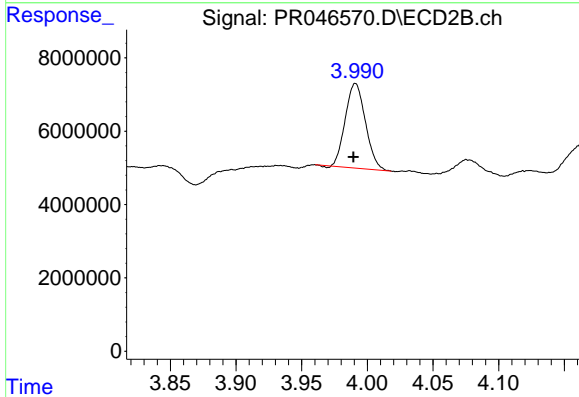
Volume Inj. : 2 µl
 Signal #1 Phase : ZB-MR1 Signal #2 Phase: ZB-MR2
 Signal #1 Info : 30Mx0.32mmx 0.50µ Signal #2 Info : 30M x 0.32mm x 0.25µm



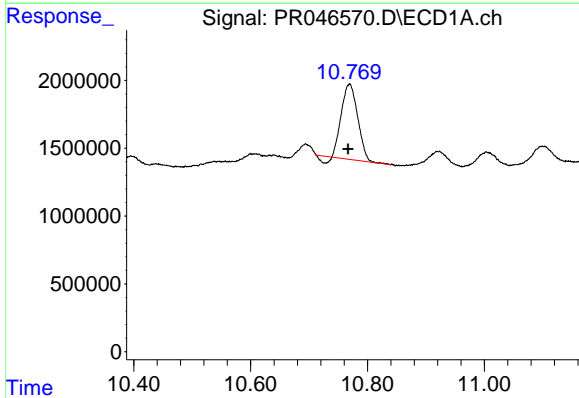


#1 Tetrachloro-m-xylene
 R.T.: 4.766 min
 Delta R.T.: 0.003 min
 Response: 4131402
 Conc: 2.61 ng/ml

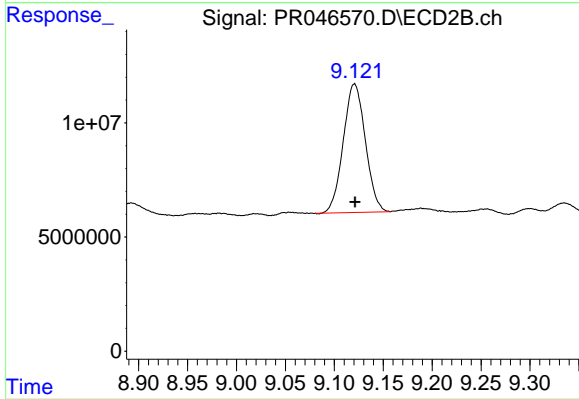
Instrument :
 ECD_R
 ClientSampleId :



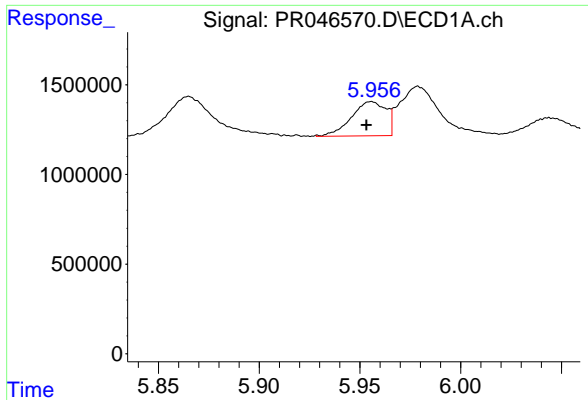
#1 Tetrachloro-m-xylene
 R.T.: 3.991 min
 Delta R.T.: 0.002 min
 Response: 24455037
 Conc: 2.44 ng/ml



#2 Decachlorobiphenyl
 R.T.: 10.769 min
 Delta R.T.: 0.003 min
 Response: 10455282
 Conc: 4.72 ng/ml

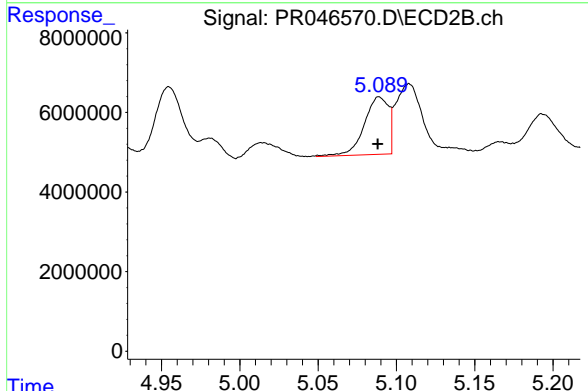


#2 Decachlorobiphenyl
 R.T.: 9.121 min
 Delta R.T.: 0.000 min
 Response: 88503028
 Conc: 5.87 ng/ml

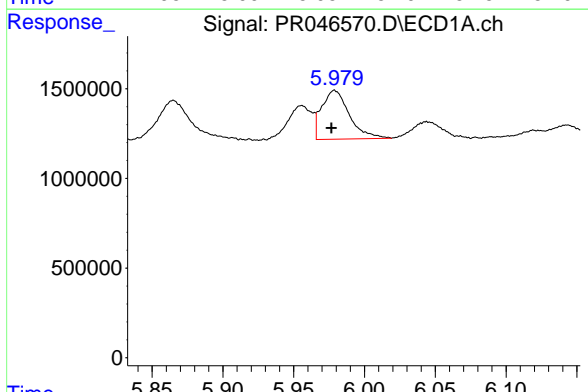


#3 AR-1016-1
 R.T.: 5.956 min
 Delta R.T.: 0.002 min
 Response: 2276031
 Conc: 33.40 ng/ml

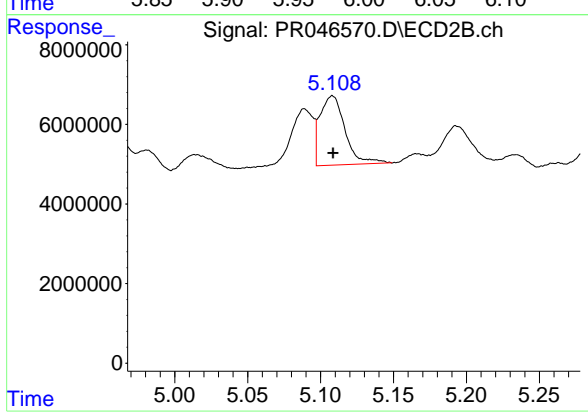
Instrument :
 ECD_R
 ClientSampleId :



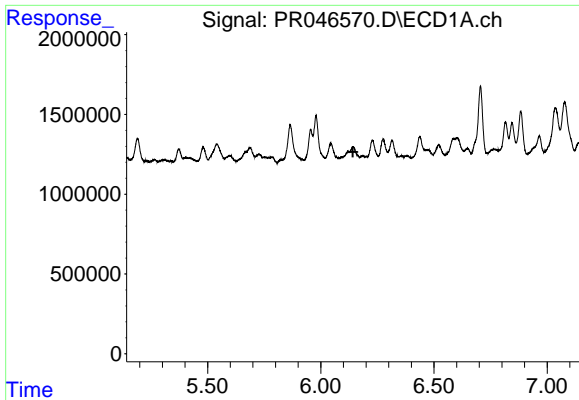
#3 AR-1016-1
 R.T.: 5.089 min
 Delta R.T.: 0.000 min
 Response: 15446045
 Conc: 33.80 ng/ml



#4 AR-1016-2
 R.T.: 5.979 min
 Delta R.T.: 0.002 min
 Response: 3691620
 Conc: 38.11 ng/ml



#4 AR-1016-2
 R.T.: 5.108 min
 Delta R.T.: 0.000 min
 Response: 20862749
 Conc: 32.73 ng/ml

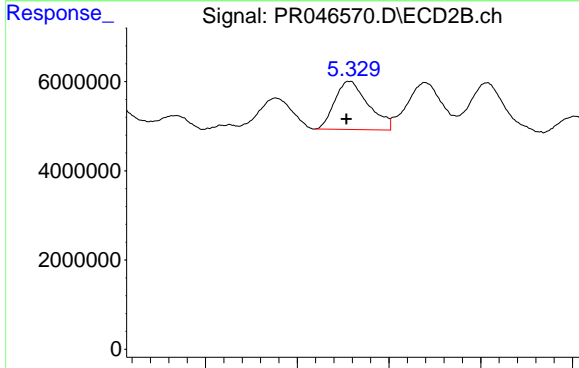


#6 AR-1016-4

R.T.: 0.000 min
 Exp R.T.: 6.142 min
 Response: 0
 Conc: N.D.

Instrument :
 ECD_R
 ClientSampled :

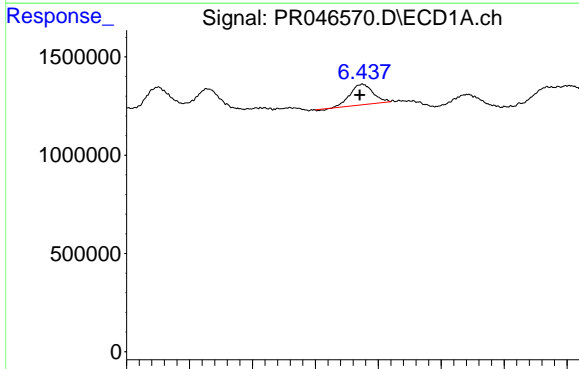
Time



#6 AR-1016-4

R.T.: 5.329 min
 Delta R.T.: 0.002 min
 Response: 13737680
 Conc: 50.89 ng/ml

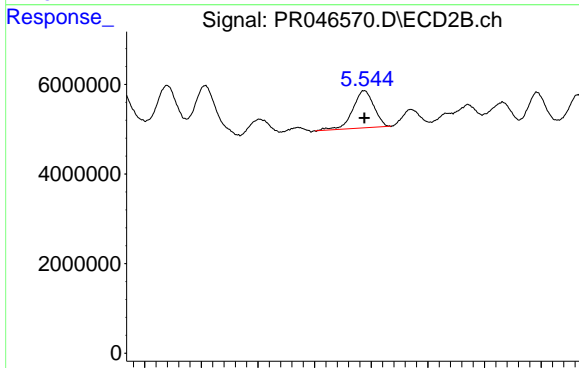
Time



#7 AR-1016-5

R.T.: 6.437 min
 Delta R.T.: 0.002 min
 Response: 1301079
 Conc: 26.26 ng/ml

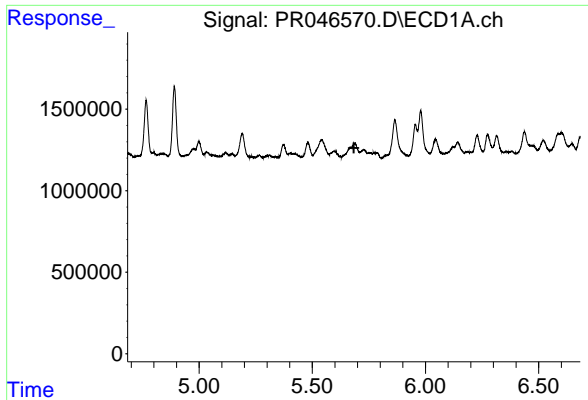
Time



#7 AR-1016-5

R.T.: 5.544 min
 Delta R.T.: 0.000 min
 Response: 10741036
 Conc: 29.60 ng/ml

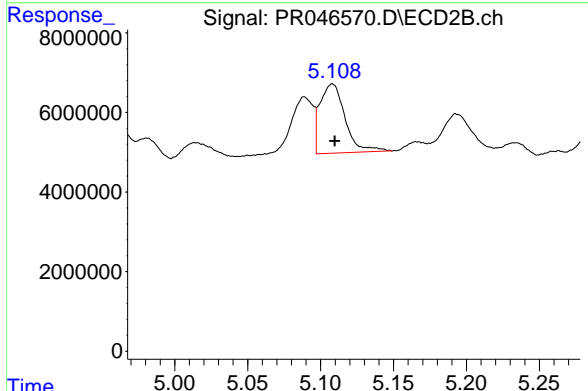
Time



#12 AR-1232-2

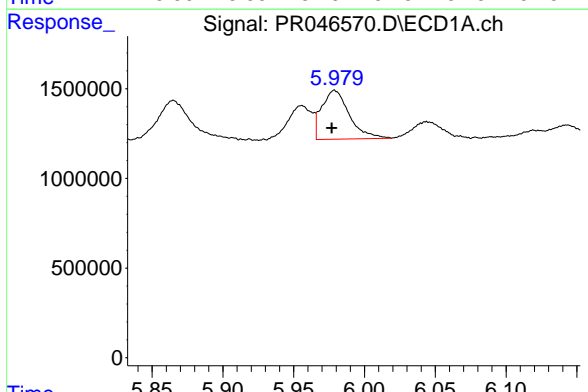
R.T.: 0.000 min
 Exp R.T.: 5.684 min
 Response: 0
 Conc: N.D.

Instrument :
 ECD_R
 ClientSampleId :



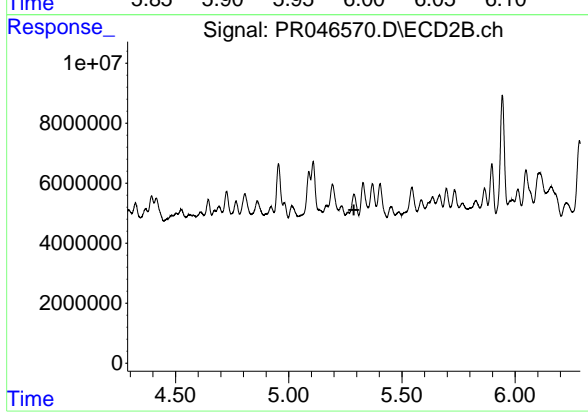
#12 AR-1232-2

R.T.: 5.108 min
 Delta R.T.: -0.002 min
 Response: 20862749
 Conc: 98.51 ng/ml



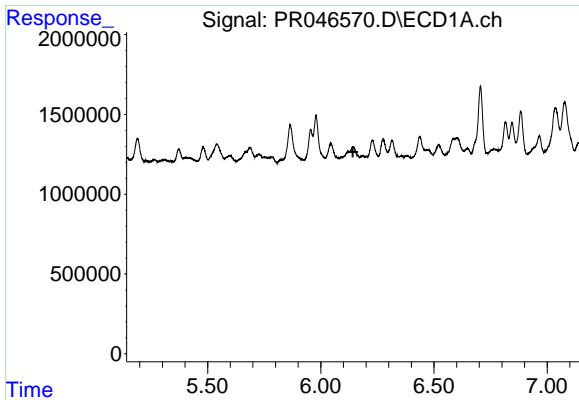
#13 AR-1232-3

R.T.: 5.979 min
 Delta R.T.: 0.002 min
 Response: 3691620
 Conc: 115.52 ng/ml



#13 AR-1232-3

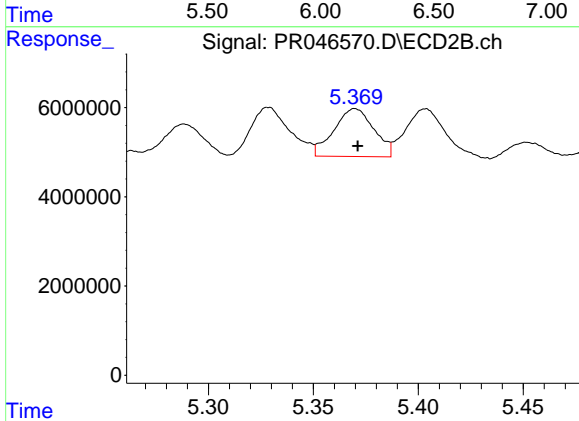
R.T.: 0.000 min
 Exp R.T.: 5.288 min
 Response: 0
 Conc: N.D.



#14 AR-1232-4

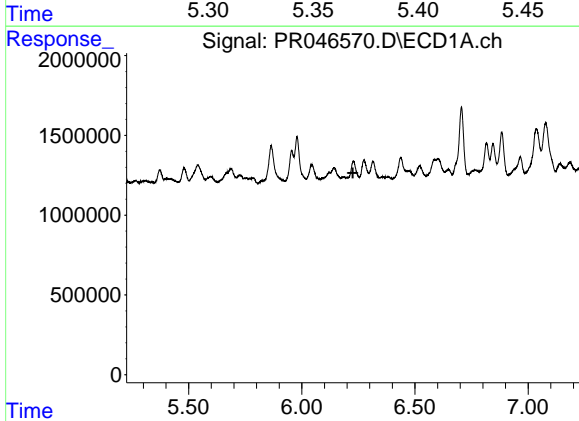
R.T.: 0.000 min
 Exp R.T.: 6.142 min
 Response: 0
 Conc: N.D.

Instrument :
 ECD_R
 ClientSampleId :



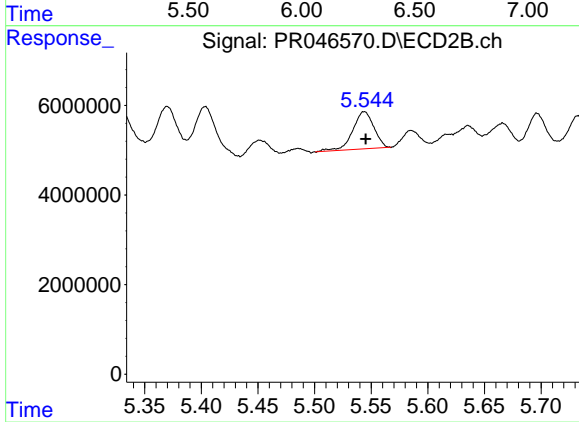
#14 AR-1232-4

R.T.: 5.370 min
 Delta R.T.: -0.001 min
 Response: 14233283
 Conc: 138.82 ng/ml



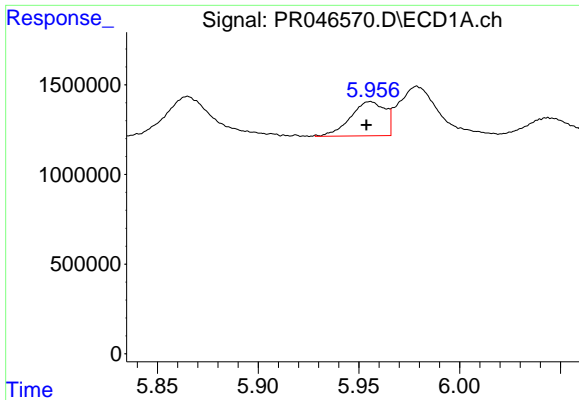
#15 AR-1232-5

R.T.: 0.000 min
 Exp R.T.: 6.226 min
 Response: 0
 Conc: N.D.



#15 AR-1232-5

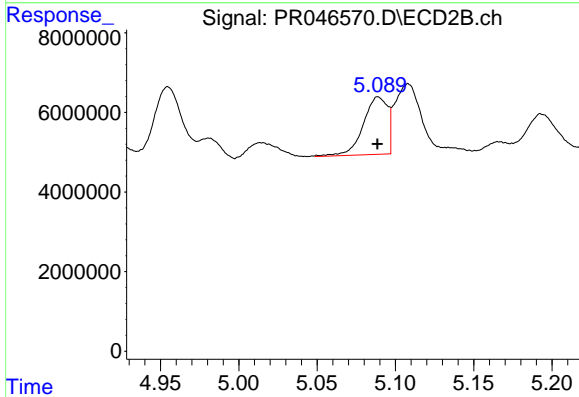
R.T.: 5.544 min
 Delta R.T.: -0.001 min
 Response: 10741036
 Conc: 88.08 ng/ml



#16 AR-1242-1

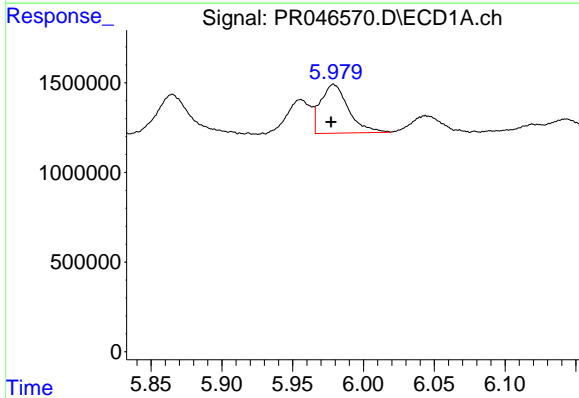
R.T.: 5.956 min
 Delta R.T.: 0.002 min
 Response: 2276031
 Conc: 53.28 ng/ml

Instrument :
 ECD_R
 ClientSampleId :



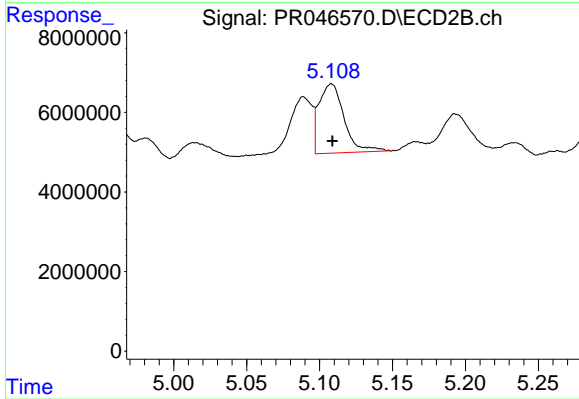
#16 AR-1242-1

R.T.: 5.089 min
 Delta R.T.: 0.000 min
 Response: 15446045
 Conc: 54.38 ng/ml



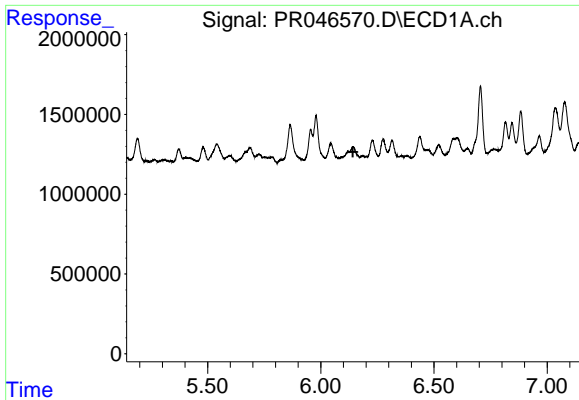
#17 AR-1242-2

R.T.: 5.979 min
 Delta R.T.: 0.002 min
 Response: 3691620
 Conc: 61.77 ng/ml



#17 AR-1242-2

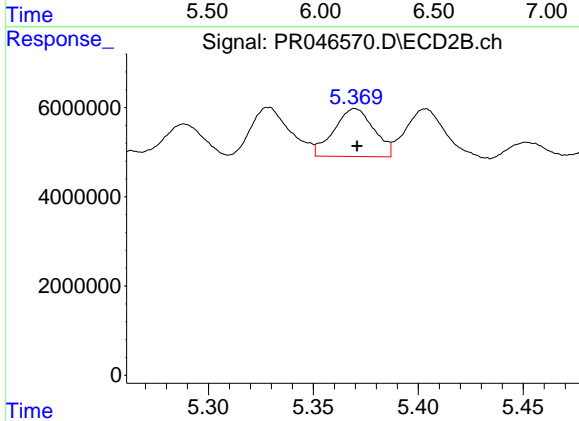
R.T.: 5.108 min
 Delta R.T.: 0.000 min
 Response: 20862749
 Conc: 53.00 ng/ml



#19 AR-1242-4

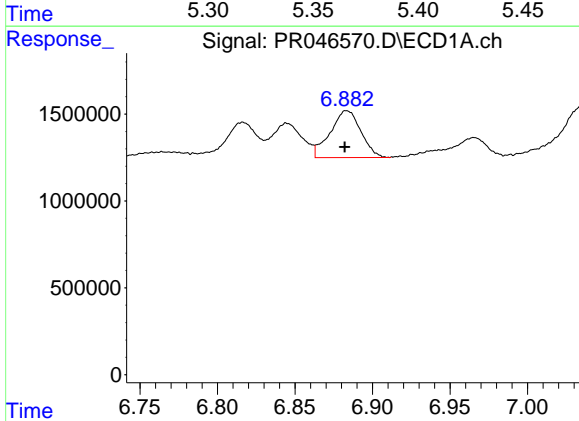
R.T.: 0.000 min
 Exp R.T.: 6.142 min
 Response: 0
 Conc: N.D.

Instrument :
 ECD_R
 ClientSampled :



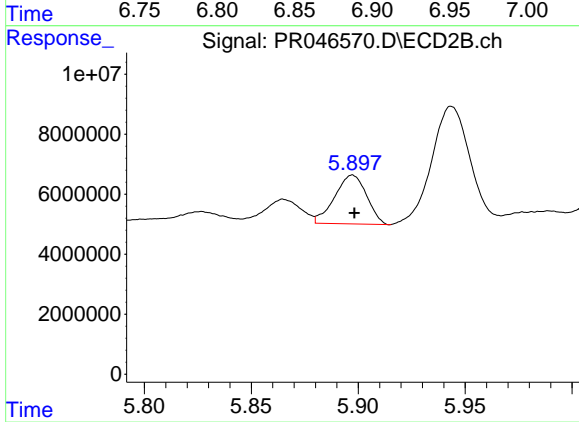
#19 AR-1242-4

R.T.: 5.370 min
 Delta R.T.: 0.000 min
 Response: 14233283
 Conc: 67.67 ng/ml



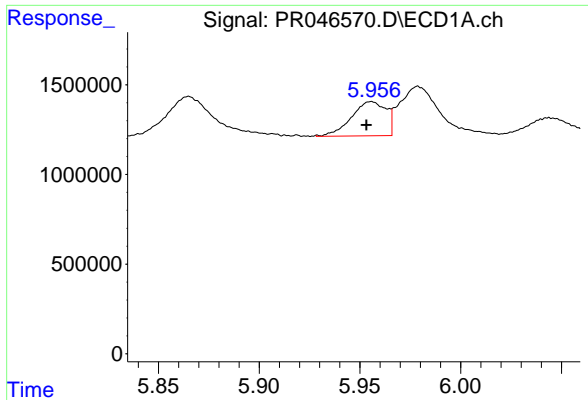
#20 AR-1242-5

R.T.: 6.883 min
 Delta R.T.: 0.001 min
 Response: 3720132
 Conc: 95.70 ng/ml



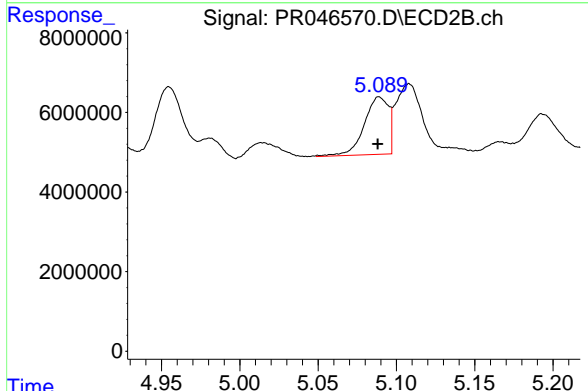
#20 AR-1242-5

R.T.: 5.897 min
 Delta R.T.: 0.000 min
 Response: 16933615
 Conc: 54.56 ng/ml

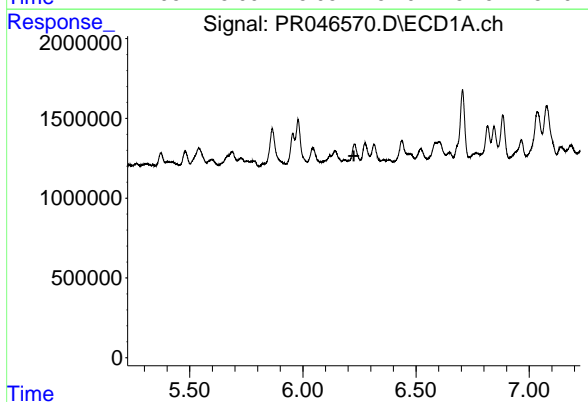


#21 AR-1248-1
 R.T.: 5.956 min
 Delta R.T.: 0.002 min
 Response: 2276031
 Conc: 62.03 ng/ml

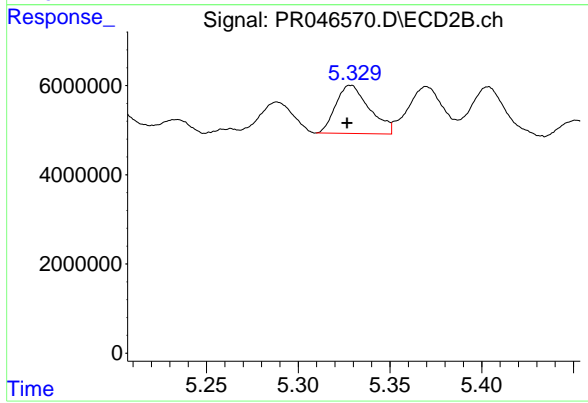
Instrument :
 ECD_R
 ClientSampled :



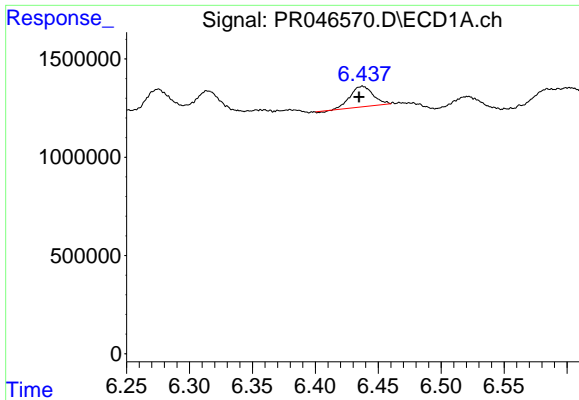
#21 AR-1248-1
 R.T.: 5.089 min
 Delta R.T.: 0.001 min
 Response: 15446045
 Conc: 64.89 ng/ml



#22 AR-1248-2
 R.T.: 0.000 min
 Exp R.T. : 6.226 min
 Response: 0
 Conc: N.D.



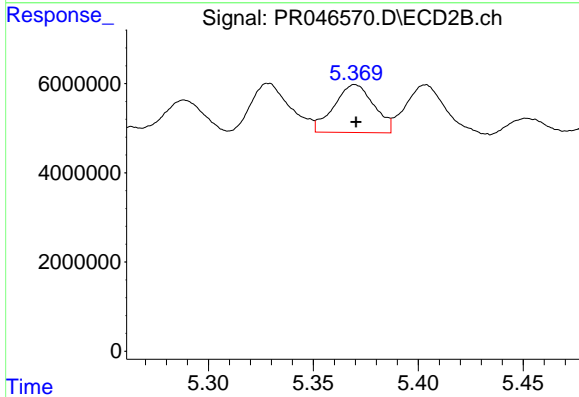
#22 AR-1248-2
 R.T.: 5.329 min
 Delta R.T.: 0.002 min
 Response: 13737680
 Conc: 43.21 ng/ml



#23 AR-1248-3

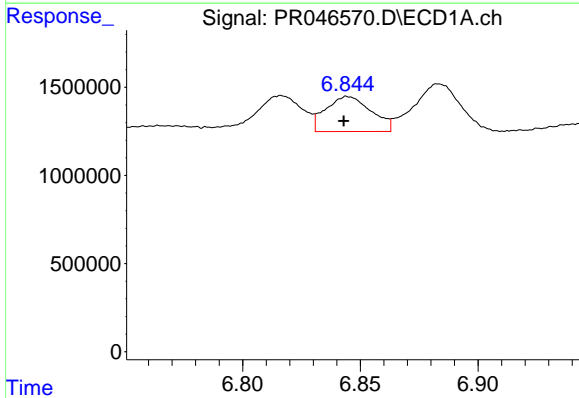
R.T.: 6.437 min
 Delta R.T.: 0.003 min
 Response: 1301079
 Conc: 22.29 ng/ml

Instrument :
 ECD_R
 ClientSampleId :



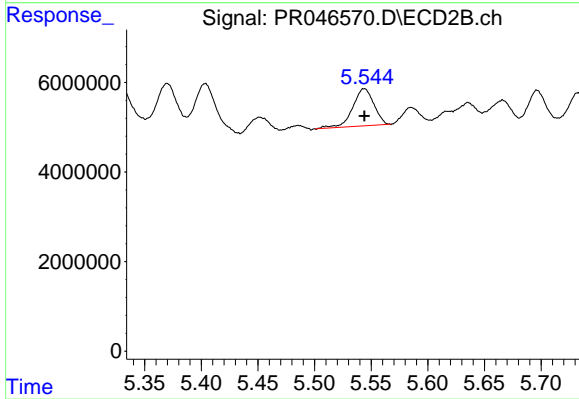
#23 AR-1248-3

R.T.: 5.370 min
 Delta R.T.: 0.000 min
 Response: 14233283
 Conc: 43.38 ng/ml



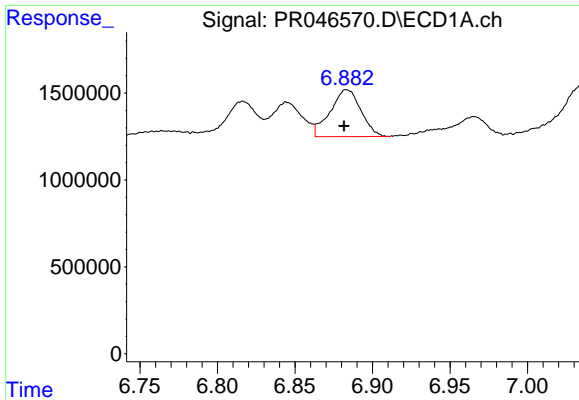
#24 AR-1248-4

R.T.: 6.845 min
 Delta R.T.: 0.002 min
 Response: 2672535
 Conc: 36.69 ng/ml



#24 AR-1248-4

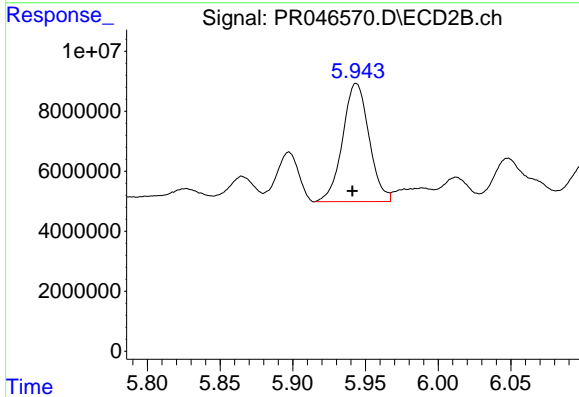
R.T.: 5.544 min
 Delta R.T.: 0.000 min
 Response: 10741036
 Conc: 25.27 ng/ml



#25 AR-1248-5

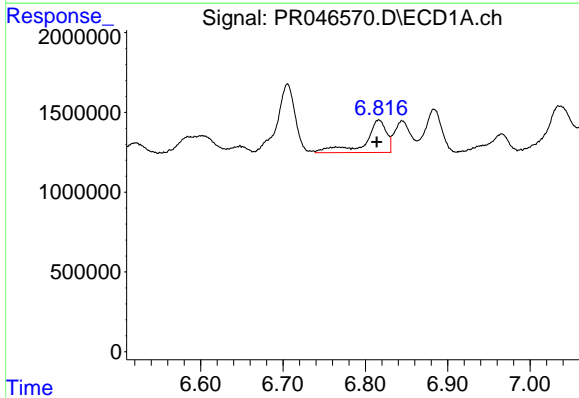
R.T.: 6.883 min
 Delta R.T.: 0.002 min
 Response: 3720132
 Conc: 53.50 ng/ml

Instrument :
 ECD_R
 ClientSampleId :



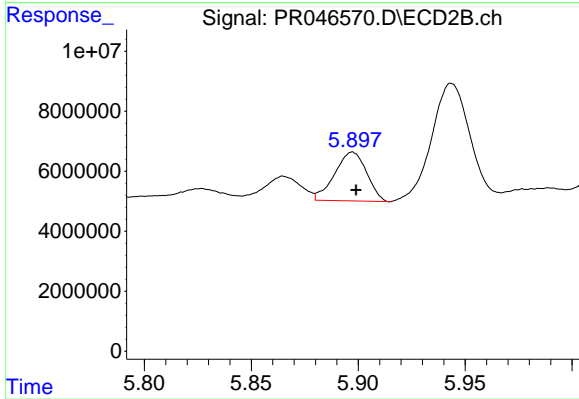
#25 AR-1248-5

R.T.: 5.944 min
 Delta R.T.: 0.003 min
 Response: 49773459
 Conc: 109.75 ng/ml



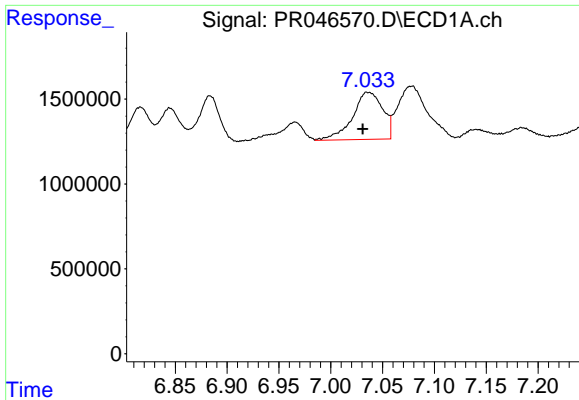
#26 AR-1254-1

R.T.: 6.816 min
 Delta R.T.: 0.002 min
 Response: 3677443
 Conc: 47.18 ng/ml



#26 AR-1254-1

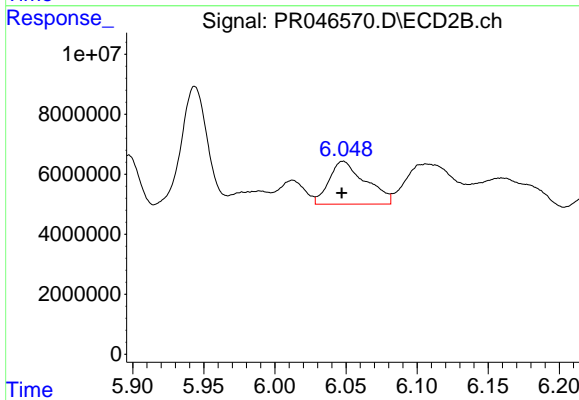
R.T.: 5.897 min
 Delta R.T.: -0.002 min
 Response: 16933615
 Conc: 22.61 ng/ml



#27 AR-1254-2

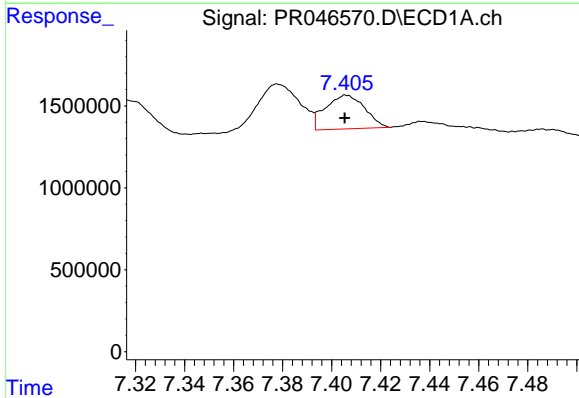
R.T.: 7.035 min
 Delta R.T.: 0.004 min
 Response: 5623373
 Conc: 45.11 ng/ml

Instrument :
 ECD_R
 ClientSampleId :



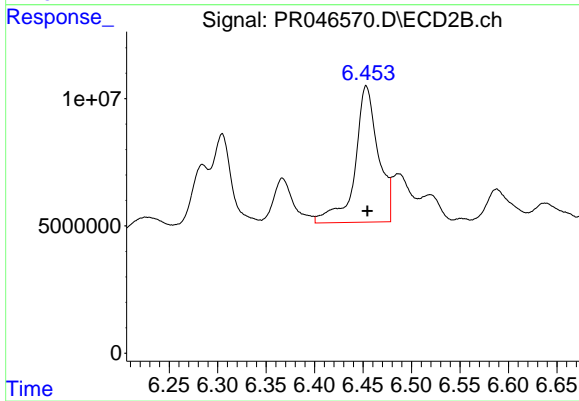
#27 AR-1254-2

R.T.: 6.048 min
 Delta R.T.: 0.001 min
 Response: 25568708
 Conc: 38.21 ng/ml



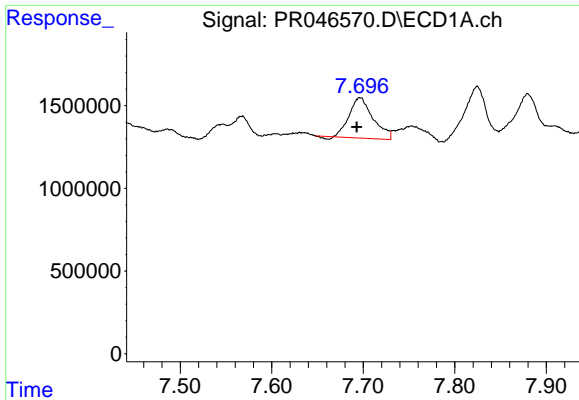
#28 AR-1254-3

R.T.: 7.406 min
 Delta R.T.: 0.000 min
 Response: 2294320
 Conc: 16.71 ng/ml



#28 AR-1254-3

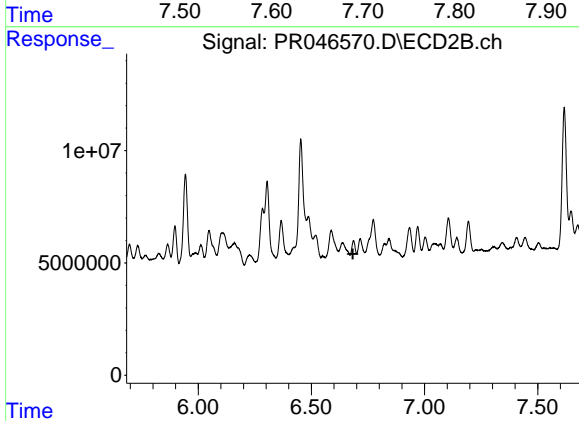
R.T.: 6.453 min
 Delta R.T.: -0.001 min
 Response: 89239152
 Conc: 75.66 ng/ml



#29 AR-1254-4

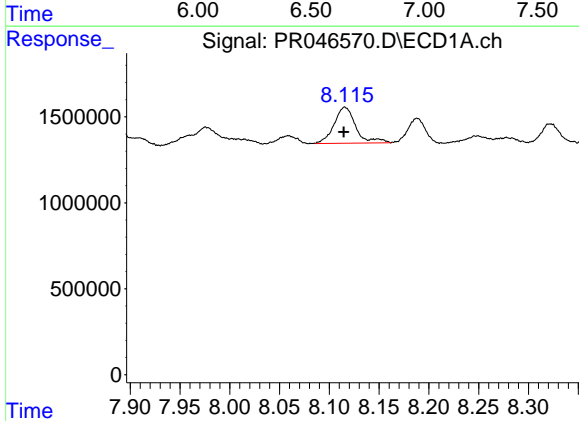
R.T.: 7.697 min
 Delta R.T.: 0.004 min
 Response: 4387001
 Conc: 41.43 ng/ml

Instrument :
 ECD_R
 ClientSampled :



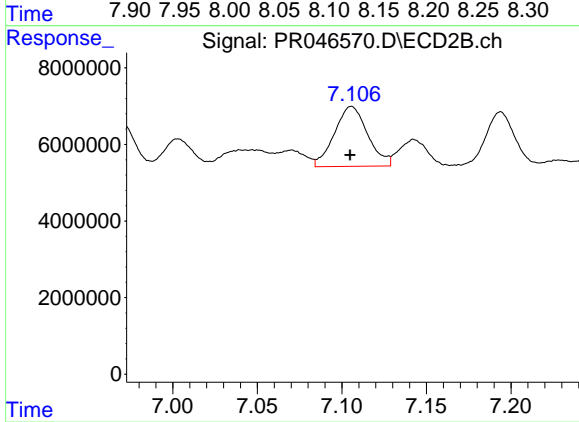
#29 AR-1254-4

R.T.: 0.000 min
 Exp R.T. : 6.683 min
 Response: 0
 Conc: N.D.



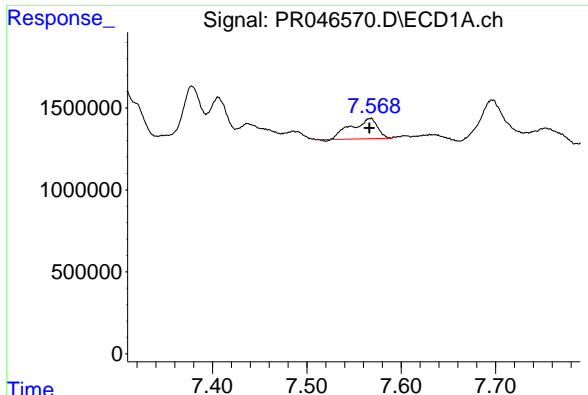
#30 AR-1254-5

R.T.: 8.116 min
 Delta R.T.: 0.001 min
 Response: 3199057
 Conc: 28.14 ng/ml



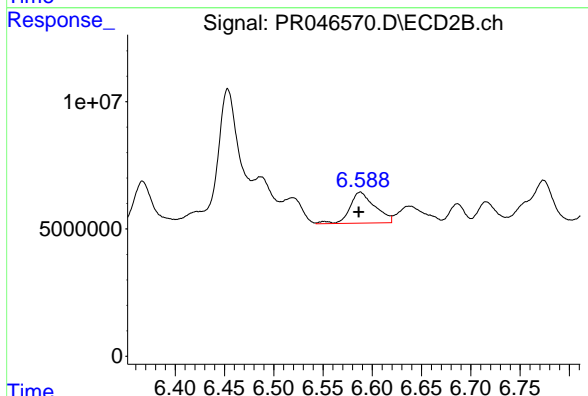
#30 AR-1254-5

R.T.: 7.106 min
 Delta R.T.: 0.000 min
 Response: 21449842
 Conc: 20.07 ng/ml

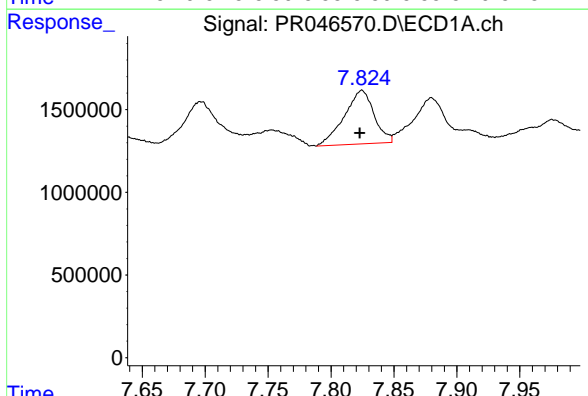


#31 AR-1260-1
 R.T.: 7.567 min
 Delta R.T.: 0.001 min
 Response: 2369784
 Conc: 24.08 ng/ml

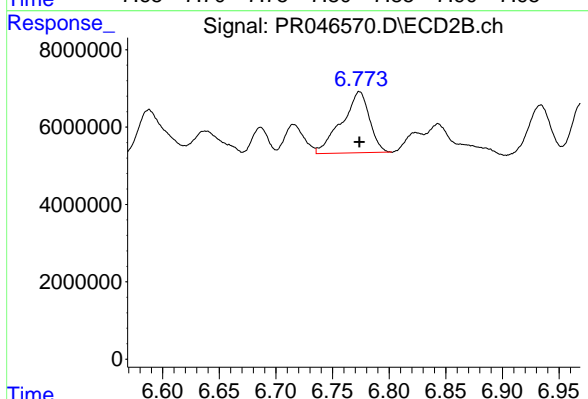
Instrument :
 ECD_R
 ClientSampleId :



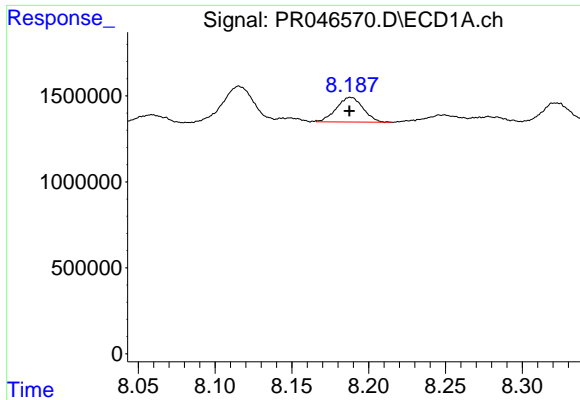
#31 AR-1260-1
 R.T.: 6.588 min
 Delta R.T.: 0.001 min
 Response: 21653356
 Conc: 28.13 ng/ml



#32 AR-1260-2
 R.T.: 7.825 min
 Delta R.T.: 0.002 min
 Response: 5347026
 Conc: 44.53 ng/ml

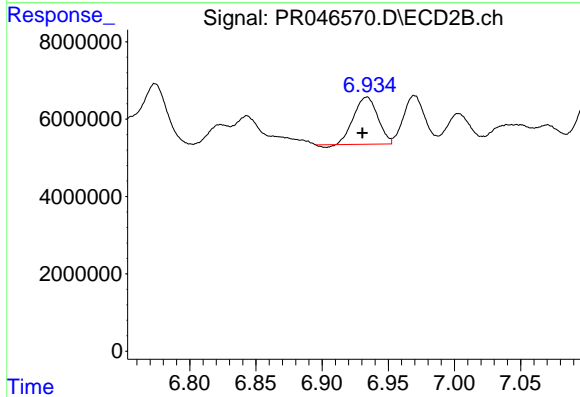


#32 AR-1260-2
 R.T.: 6.774 min
 Delta R.T.: 0.000 min
 Response: 26873819
 Conc: 27.73 ng/ml

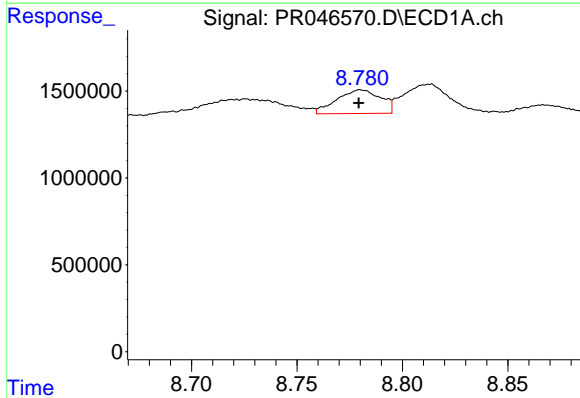


#33 AR-1260-3
 R.T.: 8.188 min
 Delta R.T.: 0.000 min
 Response: 1733449
 Conc: 19.09 ng/ml

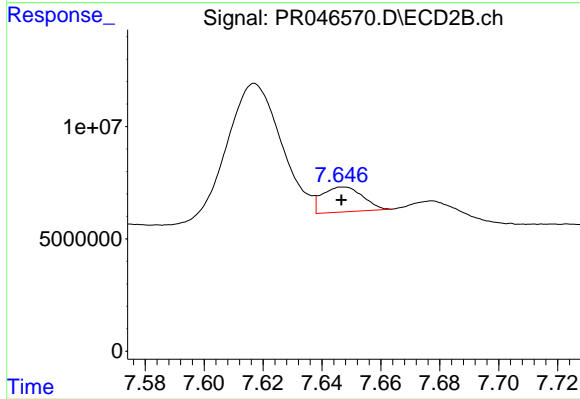
Instrument :
 ECD_R
 ClientSampleId :



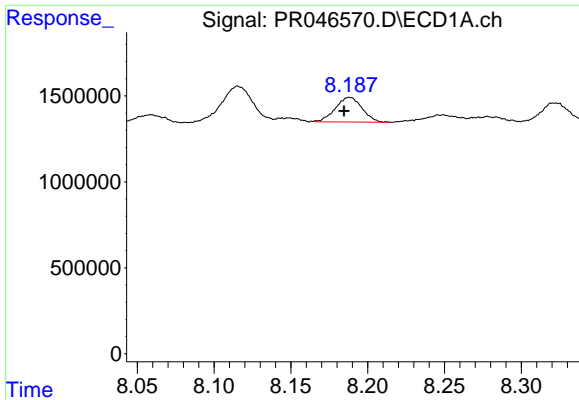
#33 AR-1260-3
 R.T.: 6.934 min
 Delta R.T.: 0.003 min
 Response: 15237948
 Conc: 17.11 ng/ml



#35 AR-1260-5
 R.T.: 8.780 min
 Delta R.T.: 0.001 min
 Response: 1976293
 Conc: 8.78 ng/ml



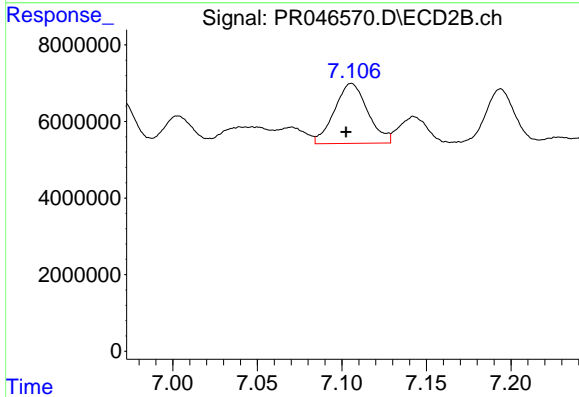
#35 AR-1260-5
 R.T.: 7.647 min
 Delta R.T.: 0.000 min
 Response: 10573476
 Conc: 5.61 ng/ml



#36 AR-1262-1

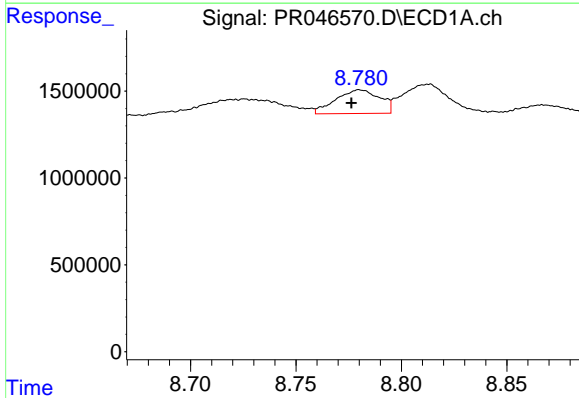
R.T.: 8.188 min
 Delta R.T.: 0.004 min
 Response: 1733449
 Conc: 14.06 ng/ml

Instrument :
 ECD_R
 ClientSampleId :



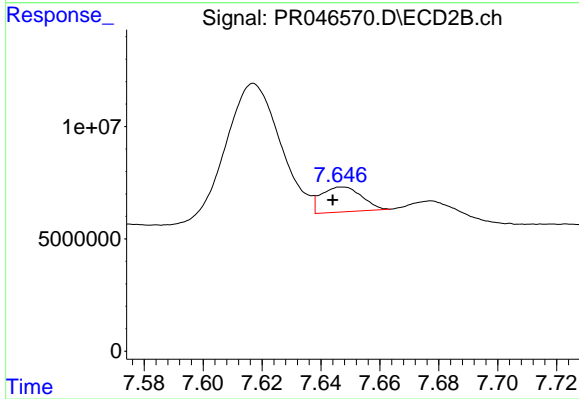
#36 AR-1262-1

R.T.: 7.106 min
 Delta R.T.: 0.003 min
 Response: 21449842
 Conc: 40.54 ng/ml



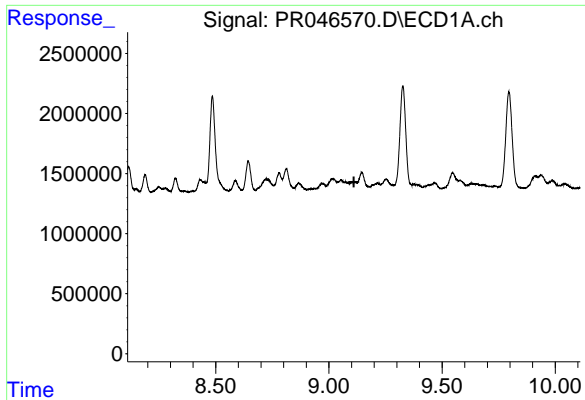
#37 AR-1262-2

R.T.: 8.780 min
 Delta R.T.: 0.004 min
 Response: 1976293
 Conc: 8.31 ng/ml



#37 AR-1262-2

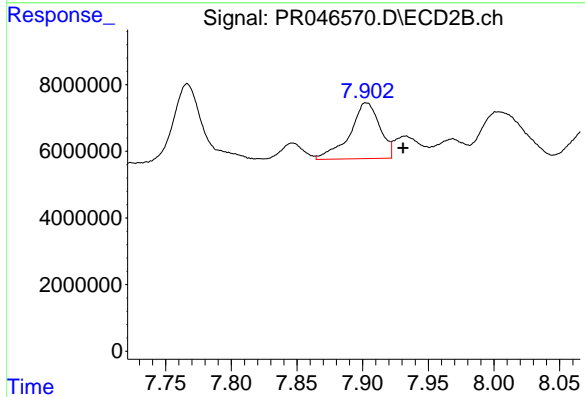
R.T.: 7.647 min
 Delta R.T.: 0.003 min
 Response: 10573476
 Conc: 5.16 ng/ml



#38 AR-1262-3

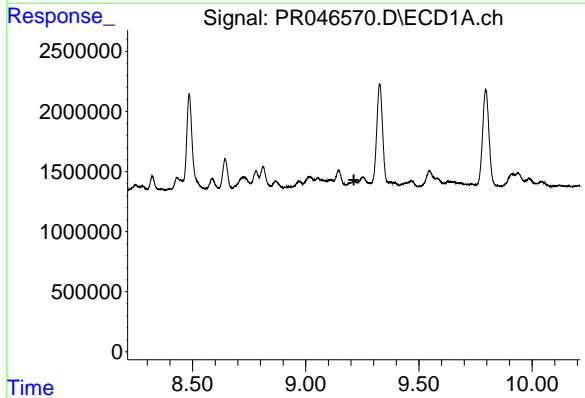
R.T.: 0.000 min
 Exp R.T. : 9.110 min
 Response: 0
 Conc: N.D.

Instrument :
 ECD_R
 ClientSampleId :



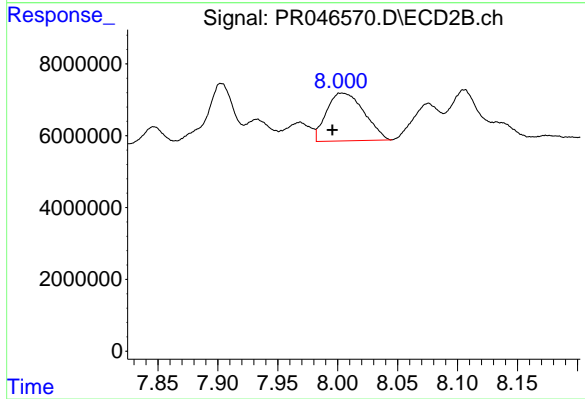
#38 AR-1262-3

R.T.: 7.903 min
 Delta R.T.: -0.028 min
 Response: 26655007
 Conc: 32.80 ng/ml



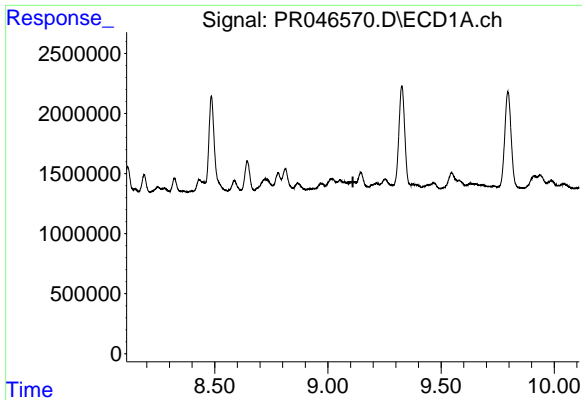
#39 AR-1262-4

R.T.: 0.000 min
 Exp R.T. : 9.213 min
 Response: 0
 Conc: N.D.



#39 AR-1262-4

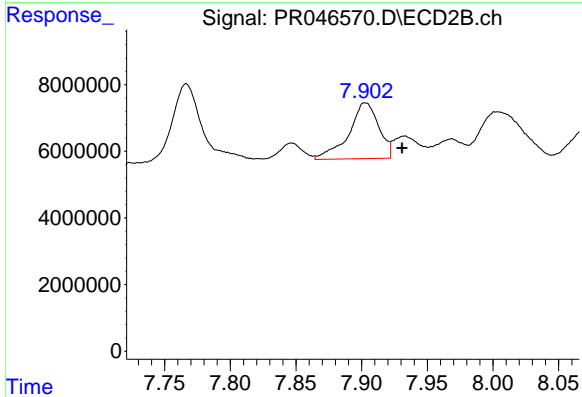
R.T.: 8.003 min
 Delta R.T.: 0.008 min
 Response: 29045587
 Conc: 20.08 ng/ml



#41 AR-1268-1

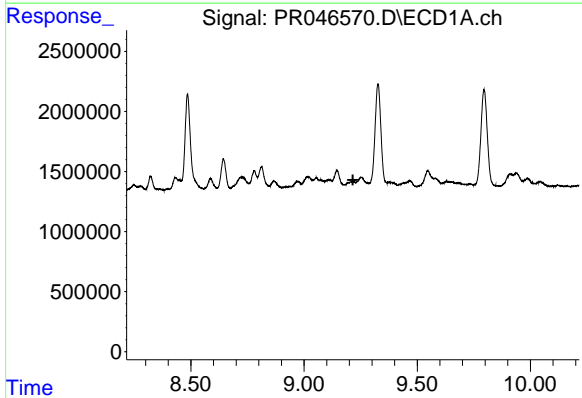
R.T.: 0.000 min
 Exp R.T. : 9.111 min
 Response: 0
 Conc: N.D.

Instrument :
 ECD_R
 ClientSampleId :



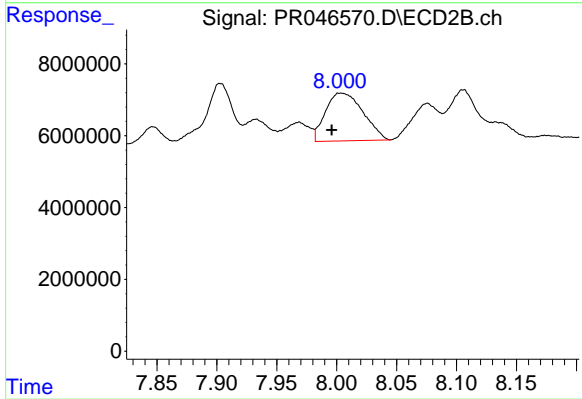
#41 AR-1268-1

R.T.: 7.903 min
 Delta R.T.: -0.028 min
 Response: 26655007
 Conc: 11.40 ng/ml



#42 AR-1268-2

R.T.: 0.000 min
 Exp R.T. : 9.216 min
 Response: 0
 Conc: N.D.



#42 AR-1268-2

R.T.: 8.003 min
 Delta R.T.: 0.008 min
 Response: 29045587
 Conc: 13.14 ng/ml