

Data Path : Z:\pestpcbsrv\HPCHEM1\ECD\_R\Data\PR072924\  
 Data File : PR067852.D  
 Signal(s) : Signal #1: ECD1A.ch Signal #2: ECD2B.ch  
 Acq On : 29 Jul 2024 19:50  
 Operator : AJ\MA  
 Sample : P3387-02MS  
 Misc :  
 ALS Vial : 32 Sample Multiplier: 1

Instrument :  
 ECD\_R  
 ClientSampleId :  
 WC-9-Full Waste ClassMS

Integration File signal 1: autoint1.e  
 Integration File signal 2: autoint2.e  
 Quant Time: Jul 30 05:23:10 2024  
 Quant Method : Z:\pestpcbsrv\HPCHEM1\ECD\_R\Method\PR072524.M  
 Quant Title : GC EXTRACTABLES  
 QLast Update : Thu Jul 25 17:55:35 2024  
 Response via : Initial Calibration  
 Integrator: ChemStation

Volume Inj. : 2 µl  
 Signal #1 Phase : ZB-MR1 Signal #2 Phase: ZB-MR2  
 Signal #1 Info : 30Mx0.32mmx 0.50µ Signal #2 Info : 30M x 0.32mm x 0.25µm

Compound	RT#1	RT#2	Resp#1	Resp#2	ng/ml	ng/ml
-----						
System Monitoring Compounds						
1) SA Tetrachlo...	3.678	3.015	60868566	98013626	18.909	18.910
2) SA Decachlor...	9.576	8.338	74412496	53269834	19.337	16.637
Target Compounds						
3) L1 AR-1016-1	4.922f	4.146	103.1E6	77589813	1415.781	480.456 #
4) L1 AR-1016-2	4.922	4.166	103.1E6	100.9E6	733.511	458.674 #
5) L1 AR-1016-3	4.987	4.346	47942443	59702597	509.777	498.126
6) L1 AR-1016-4	5.089	4.398	51065607	41932990	679.214	442.939 #
7) L1 AR-1016-5	5.404	4.618	24751581	48776964	375.776	415.920
8) L2 AR-1221-1	3.896	3.240	4005320	9488908	110.817	134.625
9) L2 AR-1221-2	3.988	3.328	6846881	9847890	246.413	192.869
10) L2 AR-1221-3	4.066	3.406	29542927	41245710	359.574	290.670
11) L3 AR-1232-1	4.066	3.406	29542927	41245710	434.353	356.325
12) L3 AR-1232-2	4.615	4.166	38202068	100.9E6	975.507	991.303
13) L3 AR-1232-3	4.922	4.346	103.1E6	59702597	1547.412	1093.641 #
14) L3 AR-1232-4	5.089	4.440	51065607	52758081	1489.224	1170.600
15) L3 AR-1232-5	5.191	4.618	26528806	48776964	1302.425	988.583
16) L4 AR-1242-1	4.922f	4.146	103.1E6	77589813	1702.044	584.050 #
17) L4 AR-1242-2	4.922	4.166	103.1E6	100.9E6	904.308	563.506 #
18) L4 AR-1242-3	4.987	4.346	47942443	59702597	603.034	603.962
19) L4 AR-1242-4	5.089	4.440	51065607	52758081	840.321	554.795 #
20) L4 AR-1242-5	5.876	4.993	4079369	46616496	71.362	432.758 #
21) L5 AR-1248-1	4.922f	4.146	103.1E6	77589813	2304.382	791.428 #
22) L5 AR-1248-2	5.191	4.398	26528806	41932990	391.755	316.016
23) L5 AR-1248-3	5.404	4.440	24751581	52758081	273.981	390.267 #
24) L5 AR-1248-4	5.807	4.618	26092048	48776964	366.042	312.847
25) L5 AR-1248-5	0.000	5.035	0	12583927	N.D.	86.840 #
26) L6 AR-1254-1	5.807	4.993	26092048	46616496	291.181	215.776 #
27) L6 AR-1254-2	6.045	5.154	23131504	52198645	164.444	273.757 #
28) L6 AR-1254-3	6.435	5.580	18710719	26692326	114.603	89.276
29) L6 AR-1254-4	6.746	5.829	10461978	12334170	96.913	68.991 #
30) L6 AR-1254-5	7.199	6.279	116.2E6	164.1E6	905.437	615.679 #
31) L7 AR-1260-1	6.615	5.724	51191239	103.1E6	435.141	486.207
32) L7 AR-1260-2	6.897	5.929	84275839	130.6E6	605.904	523.402
33) L7 AR-1260-3	7.286	6.089	45011786	102.2E6	401.147	427.586
34) L7 AR-1260-4	7.528	6.601	53893889	72471914	431.535	394.042
35) L7 AR-1260-5	7.865	6.866	125.0E6	152.0E6	452.719	384.653
36) L8 AR-1262-1	7.286	6.324	45011786	78240830	259.603	277.977
37) L8 AR-1262-2	7.865	6.866	125.0E6	152.0E6	373.554	317.966
38) L8 AR-1262-3	8.177	7.176	77108770	30745969	313.346	162.363 #
39) L8 AR-1262-4	8.257	7.241	57526867	117.7E6	261.928	330.837 #
40) L8 AR-1262-5	8.880	7.782	42298202	34547343	262.962	229.311
41) L9 AR-1268-1	8.177	7.176	77108770	30745969	172.750	59.082 #

Data Path : Z:\pestpcbsrv\HPCHEM1\ECD\_R\Data\PR072924\  
 Data File : PR067852.D  
 Signal(s) : Signal #1: ECD1A.ch Signal #2: ECD2B.ch  
 Acq On : 29 Jul 2024 19:50  
 Operator : AJ\MA  
 Sample : P3387-02MS  
 Misc :  
 ALS Vial : 32 Sample Multiplier: 1

**Instrument :**  
 ECD\_R  
**ClientSampleId :**  
 WC-9-Full Waste ClassMS

Integration File signal 1: autoint1.e  
 Integration File signal 2: autoint2.e  
 Quant Time: Jul 30 05:23:10 2024  
 Quant Method : Z:\pestpcbsrv\HPCHEM1\ECD\_R\Method\PR072524.M  
 Quant Title : GC EXTRACTABLES  
 QLast Update : Thu Jul 25 17:55:35 2024  
 Response via : Initial Calibration  
 Integrator: ChemStation

Volume Inj. : 2 µl  
 Signal #1 Phase : ZB-MR1 Signal #2 Phase: ZB-MR2  
 Signal #1 Info : 30Mx0.32mmx 0.50µ Signal #2 Info : 30M x 0.32mm x 0.25µm

	Compound	RT#1	RT#2	Resp#1	Resp#2	ng/ml	ng/ml
42)	L9 AR-1268-2	8.257	7.241	57526867	117.7E6	122.151	248.826 #
43)	L9 AR-1268-3	8.477	7.471	4960165	4054533	11.193	9.945
44)	L9 AR-1268-4	8.880	7.782	42298202	34547343	252.143	212.112
45)	L9 AR-1268-5	0.000	8.081	0	11588204	N.D.	9.797 #

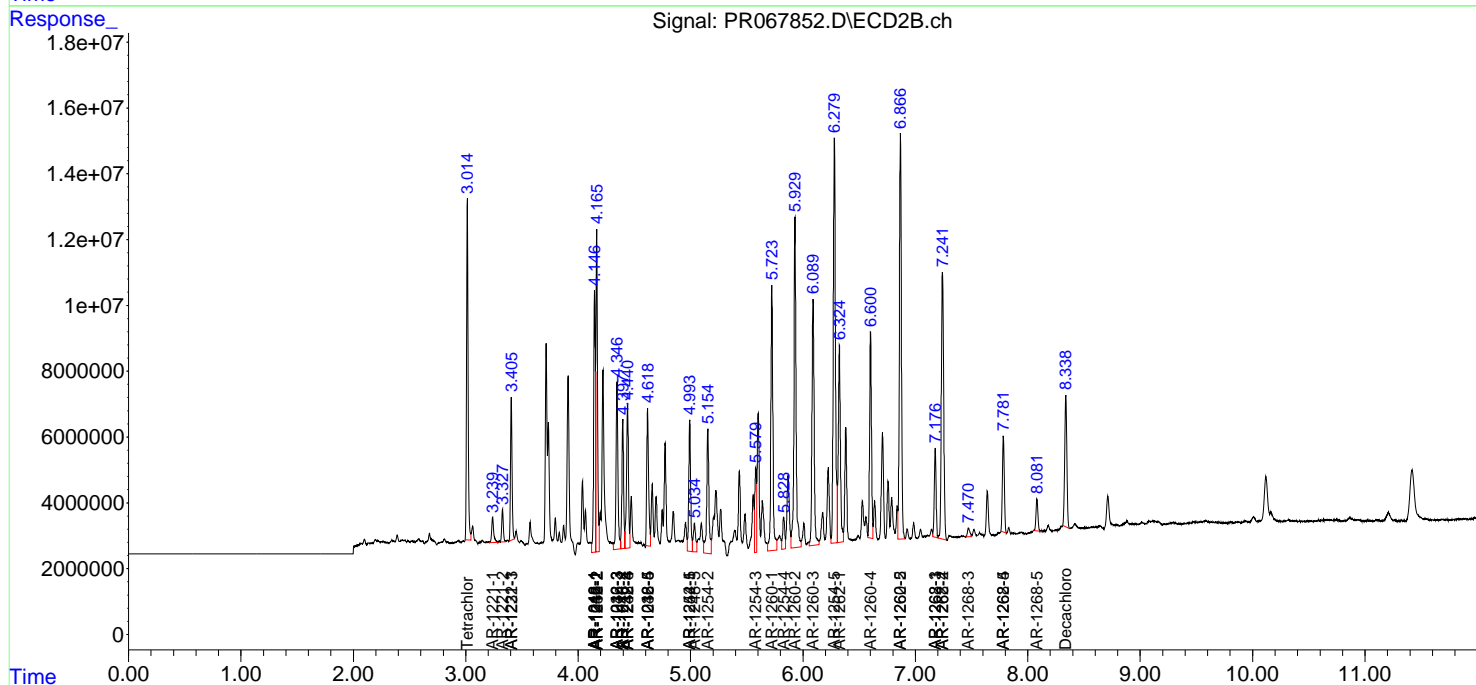
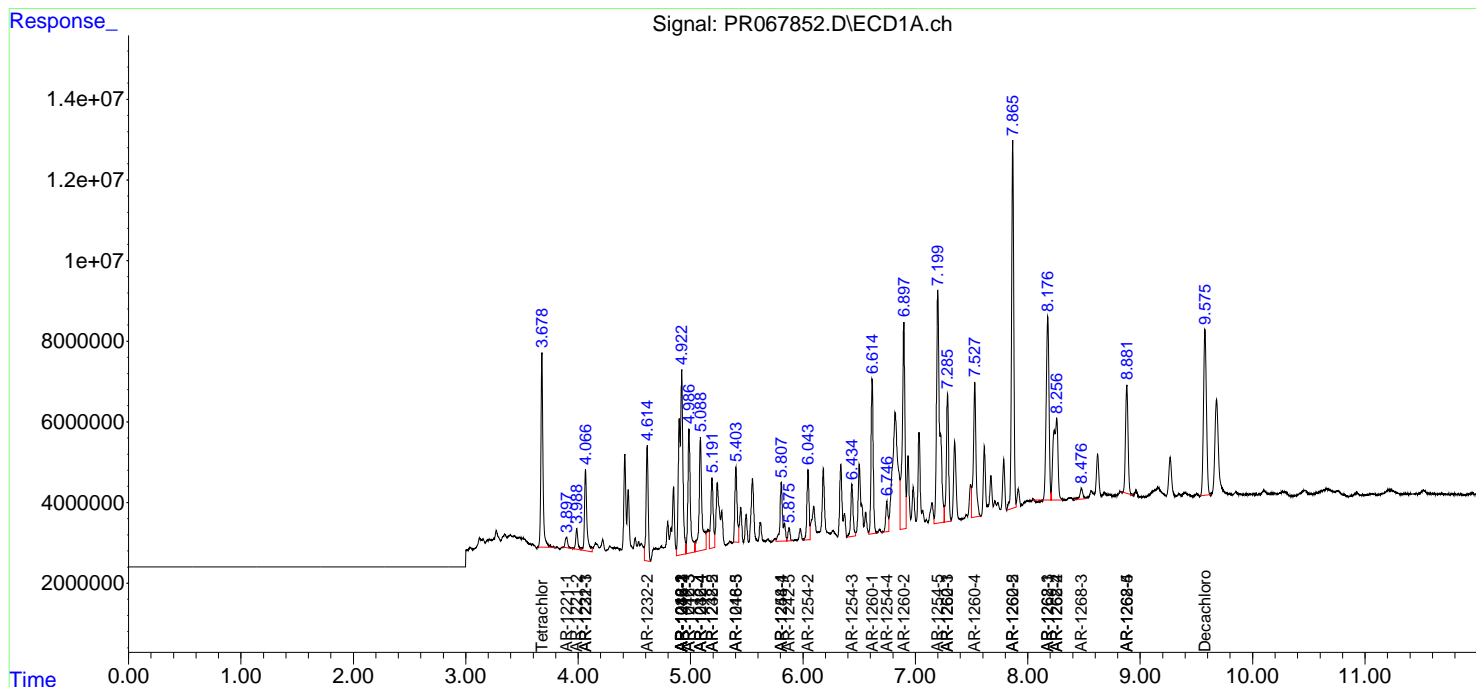
(f)=RT Delta > 1/2 Window (#)=Amounts differ by > 25% (m)=manual int.

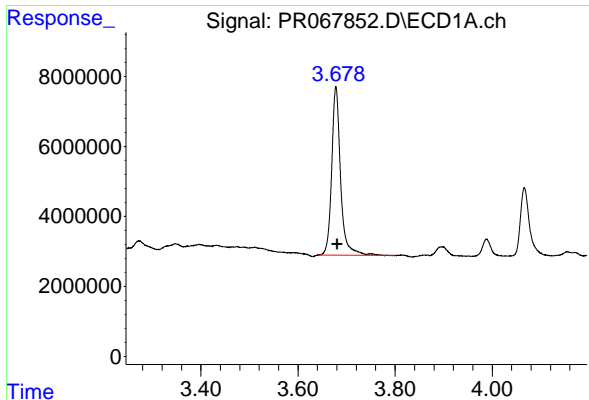
Data Path : Z:\pestpcbsrv\HPCHEM1\ECD\_R\Data\PR072924\  
 Data File : PR067852.D  
 Signal(s) : Signal #1: ECD1A.ch Signal #2: ECD2B.ch  
 Acq On : 29 Jul 2024 19:50  
 Operator : AJ\MA  
 Sample : P3387-02MS  
 Misc :  
 ALS Vial : 32 Sample Multiplier: 1

Instrument :  
 ECD\_R  
 ClientSampleId :  
 WC-9-Full Waste ClassMS

Integration File signal 1: autoint1.e  
 Integration File signal 2: autoint2.e  
 Quant Time: Jul 30 05:23:10 2024  
 Quant Method : Z:\pestpcbsrv\HPCHEM1\ECD\_R\Method\PR072524.M  
 Quant Title : GC EXTRACTABLES  
 QLast Update : Thu Jul 25 17:55:35 2024  
 Response via : Initial Calibration  
 Integrator: ChemStation

Volume Inj. : 2 µl  
 Signal #1 Phase : ZB-MR1 Signal #2 Phase: ZB-MR2  
 Signal #1 Info : 30Mx0.32mmx 0.50µ Signal #2 Info : 30M x 0.32mm x 0.25µm

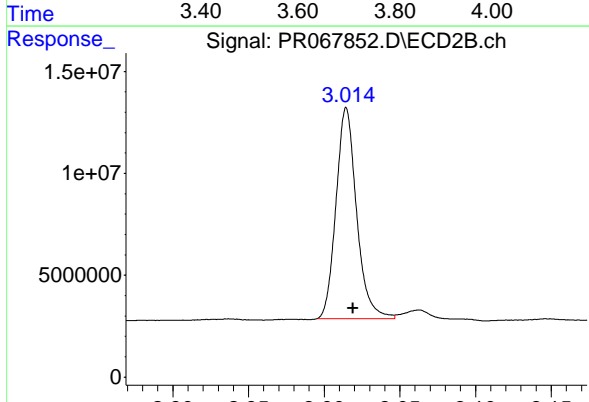




#1 Tetrachloro-m-xylene

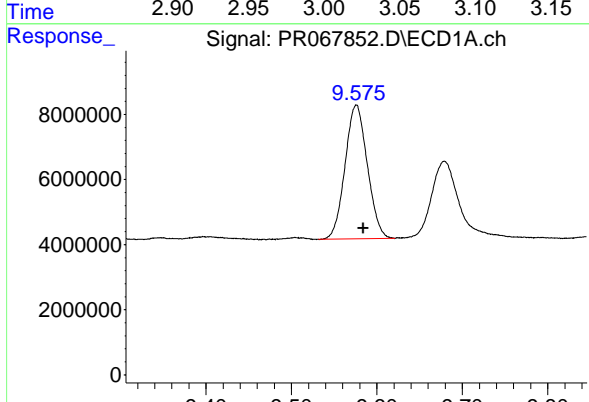
R.T.: 3.678 min  
 Delta R.T.: -0.003 min  
 Response: 60868566  
 Conc: 18.91 ng/ml

Instrument : ECD\_R  
 ClientSampleId : WC-9-Full Waste ClassMS



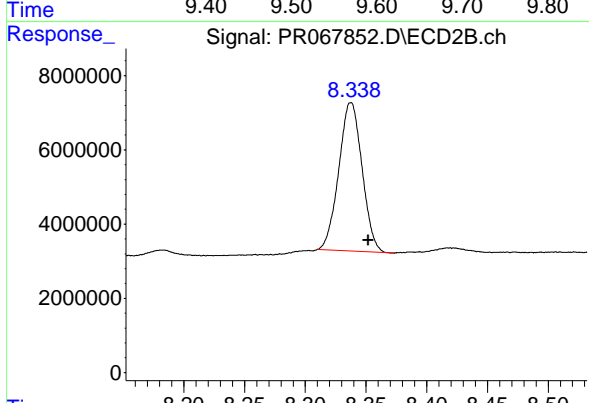
#1 Tetrachloro-m-xylene

R.T.: 3.015 min  
 Delta R.T.: -0.004 min  
 Response: 98013626  
 Conc: 18.91 ng/ml



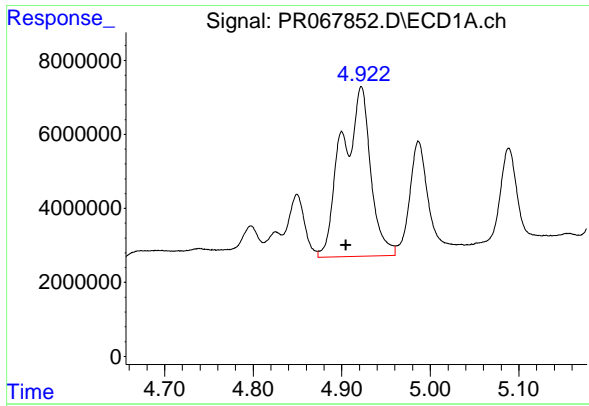
#2 Decachlorobiphenyl

R.T.: 9.576 min  
 Delta R.T.: -0.008 min  
 Response: 74412496  
 Conc: 19.34 ng/ml



#2 Decachlorobiphenyl

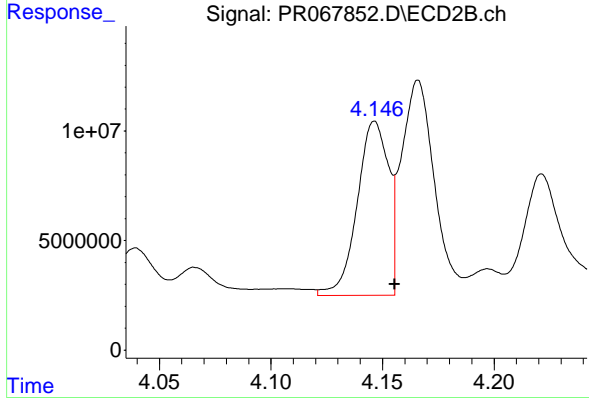
R.T.: 8.338 min  
 Delta R.T.: -0.014 min  
 Response: 53269834  
 Conc: 16.64 ng/ml



#3 AR-1016-1

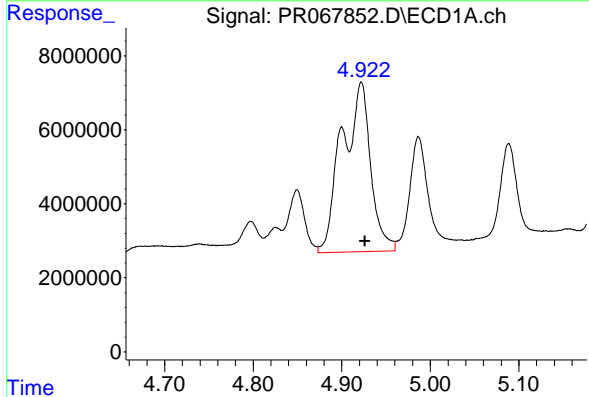
R.T.: 4.922 min  
 Delta R.T.: 0.017 min  
 Response: 103129103  
 Conc: 1415.78 ng/ml

Instrument :  
 ECD\_R  
 ClientSampleId :  
 WC-9-Full Waste ClassMS



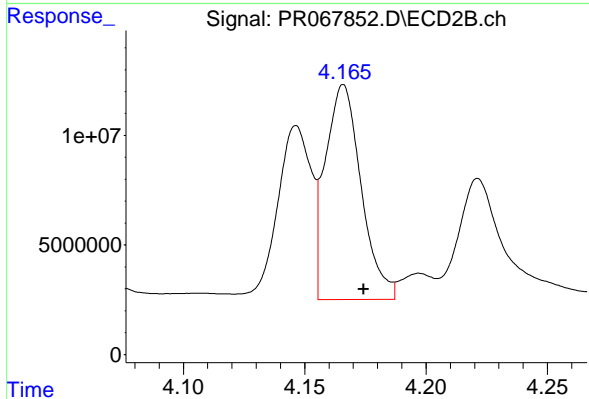
#3 AR-1016-1

R.T.: 4.146 min  
 Delta R.T.: -0.009 min  
 Response: 77589813  
 Conc: 480.46 ng/ml



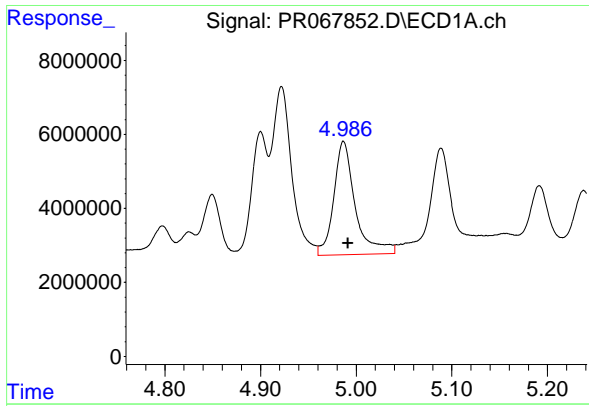
#4 AR-1016-2

R.T.: 4.922 min  
 Delta R.T.: -0.005 min  
 Response: 103129103  
 Conc: 733.51 ng/ml



#4 AR-1016-2

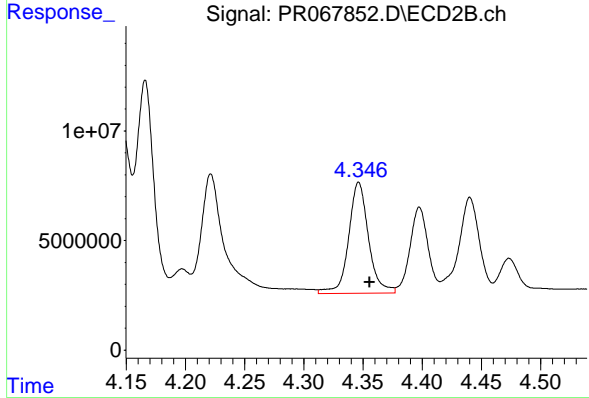
R.T.: 4.166 min  
 Delta R.T.: -0.008 min  
 Response: 100916058  
 Conc: 458.67 ng/ml



#5 AR-1016-3

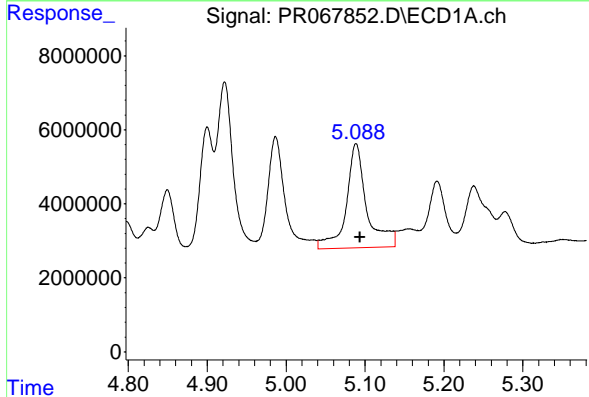
R.T.: 4.987 min  
 Delta R.T.: -0.005 min  
 Response: 47942443  
 Conc: 509.78 ng/ml

Instrument : ECD\_R  
 ClientSampleId : WC-9-Full Waste ClassMS



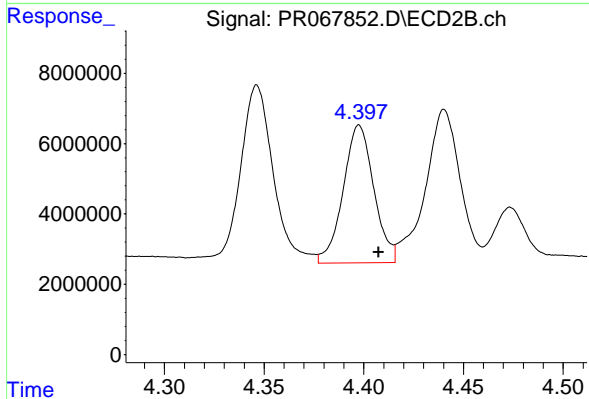
#5 AR-1016-3

R.T.: 4.346 min  
 Delta R.T.: -0.009 min  
 Response: 59702597  
 Conc: 498.13 ng/ml



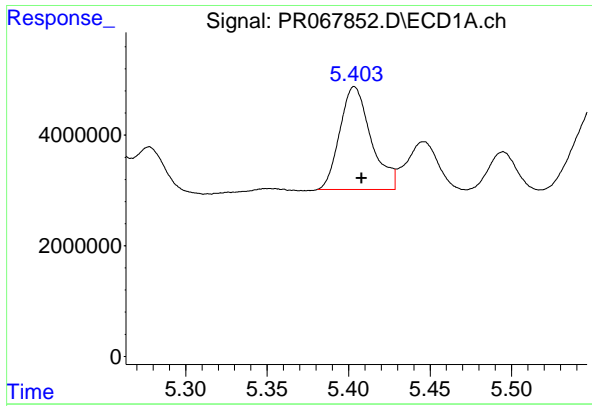
#6 AR-1016-4

R.T.: 5.089 min  
 Delta R.T.: -0.005 min  
 Response: 51065607  
 Conc: 679.21 ng/ml



#6 AR-1016-4

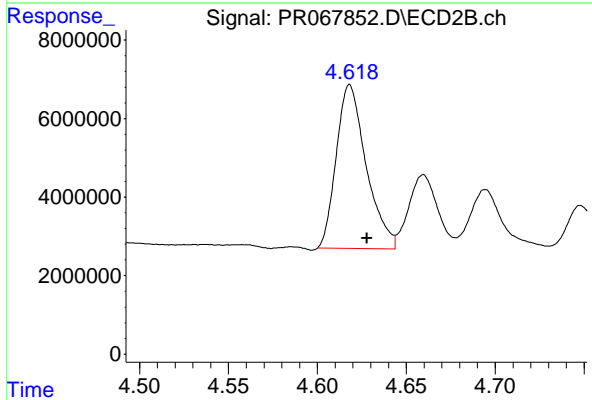
R.T.: 4.398 min  
 Delta R.T.: -0.010 min  
 Response: 41932990  
 Conc: 442.94 ng/ml



#7 AR-1016-5

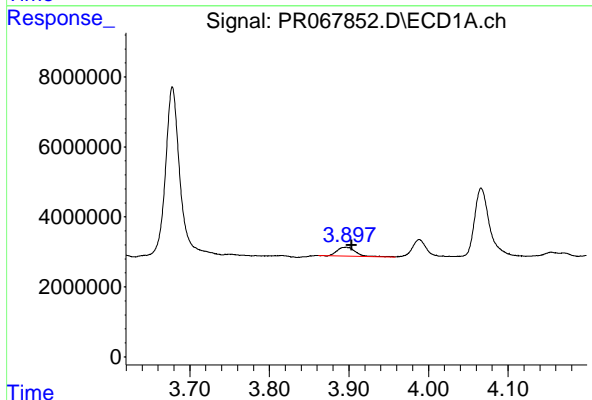
R.T.: 5.404 min  
 Delta R.T.: -0.004 min  
 Response: 24751581  
 Conc: 375.78 ng/ml

Instrument :  
 ECD\_R  
 ClientSampleId :  
 WC-9-Full Waste ClassMS



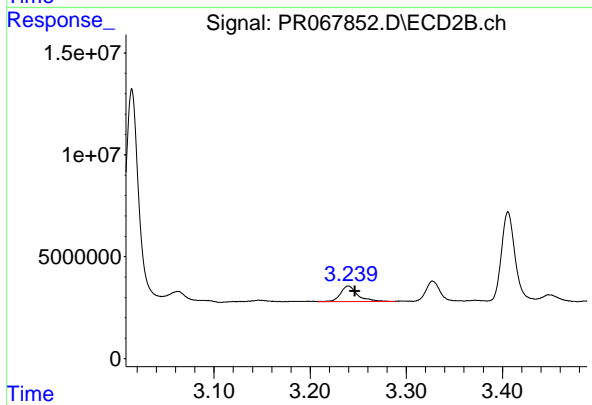
#7 AR-1016-5

R.T.: 4.618 min  
 Delta R.T.: -0.010 min  
 Response: 48776964  
 Conc: 415.92 ng/ml



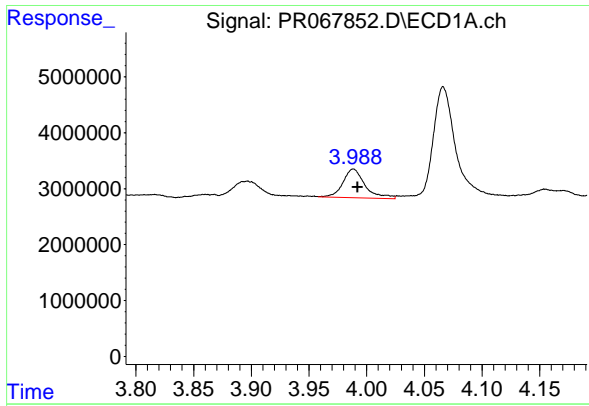
#8 AR-1221-1

R.T.: 3.896 min  
 Delta R.T.: -0.008 min  
 Response: 4005320  
 Conc: 110.82 ng/ml



#8 AR-1221-1

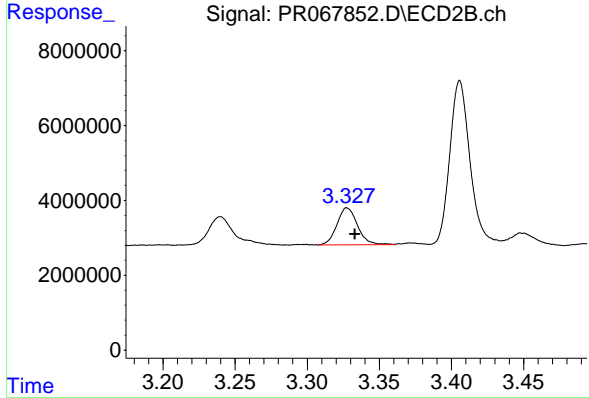
R.T.: 3.240 min  
 Delta R.T.: -0.007 min  
 Response: 9488908  
 Conc: 134.63 ng/ml



#9 AR-1221-2

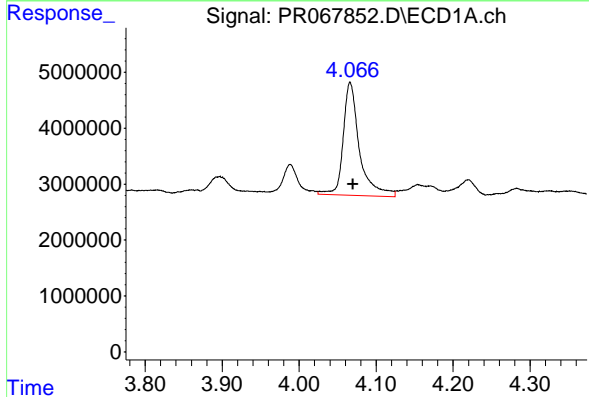
R.T.: 3.988 min  
 Delta R.T.: -0.004 min  
 Response: 6846881  
 Conc: 246.41 ng/ml

Instrument :  
 ECD\_R  
 ClientSampleId :  
 WC-9-Full Waste ClassMS



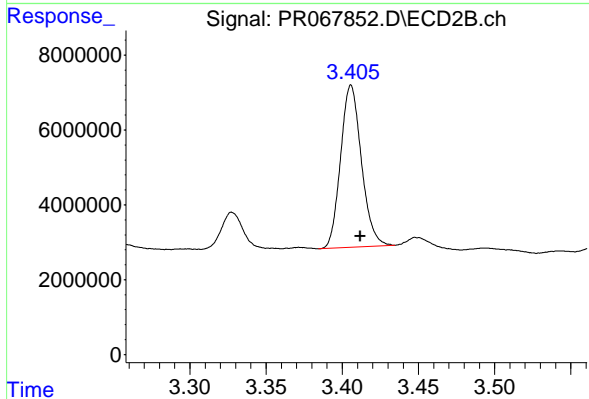
#9 AR-1221-2

R.T.: 3.328 min  
 Delta R.T.: -0.005 min  
 Response: 9847890  
 Conc: 192.87 ng/ml



#10 AR-1221-3

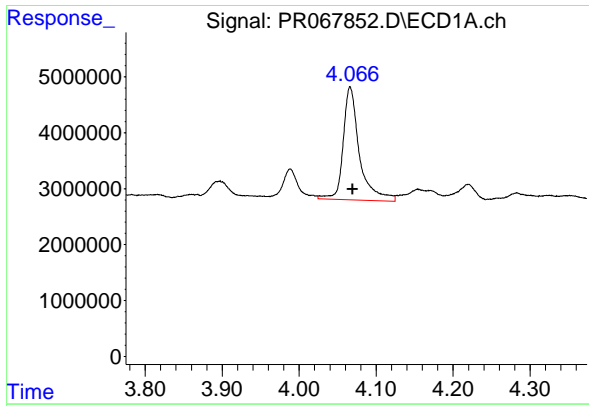
R.T.: 4.066 min  
 Delta R.T.: -0.004 min  
 Response: 29542927  
 Conc: 359.57 ng/ml



#10 AR-1221-3

R.T.: 3.406 min  
 Delta R.T.: -0.006 min  
 Response: 41245710  
 Conc: 290.67 ng/ml

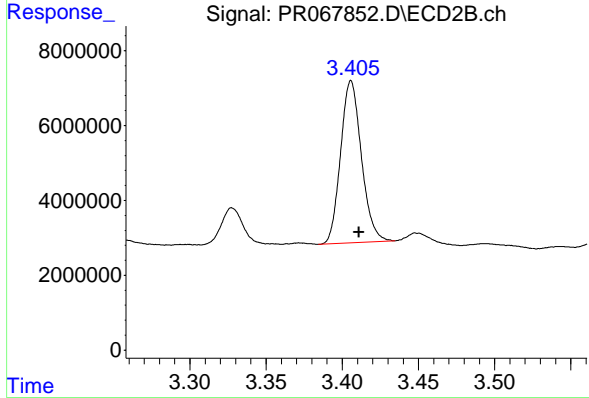




#11 AR-1232-1

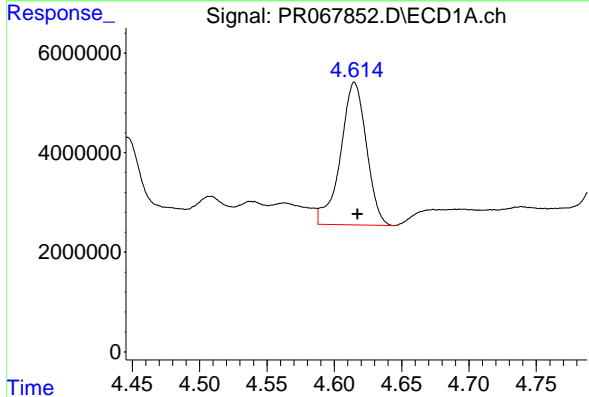
R.T.: 4.066 min  
 Delta R.T.: -0.003 min  
 Response: 29542927  
 Conc: 434.35 ng/ml

Instrument : ECD\_R  
 ClientSampleId : WC-9-Full Waste ClassMS



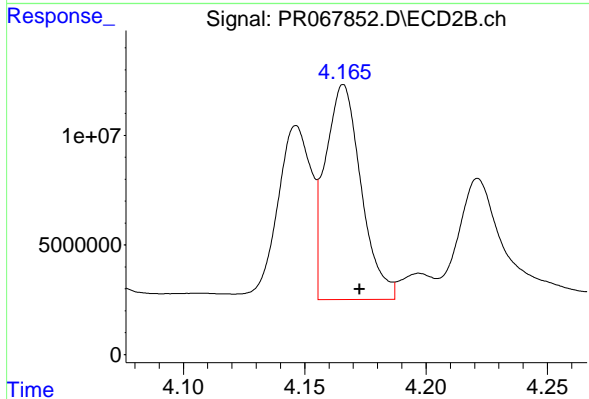
#11 AR-1232-1

R.T.: 3.406 min  
 Delta R.T.: -0.005 min  
 Response: 41245710  
 Conc: 356.33 ng/ml



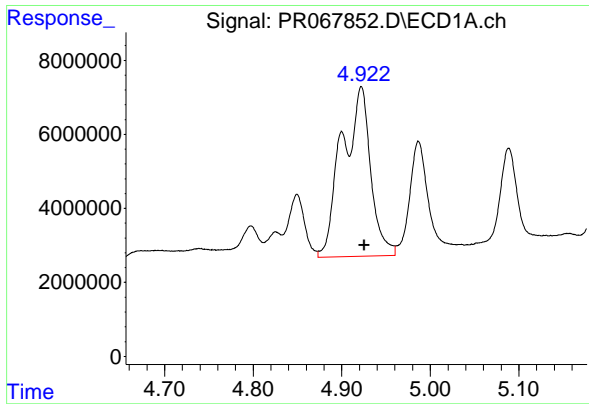
#12 AR-1232-2

R.T.: 4.615 min  
 Delta R.T.: -0.002 min  
 Response: 38202068  
 Conc: 975.51 ng/ml



#12 AR-1232-2

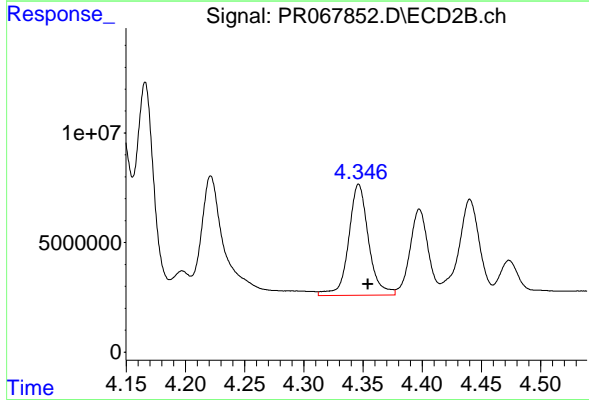
R.T.: 4.166 min  
 Delta R.T.: -0.007 min  
 Response: 100916058  
 Conc: 991.30 ng/ml



#13 AR-1232-3

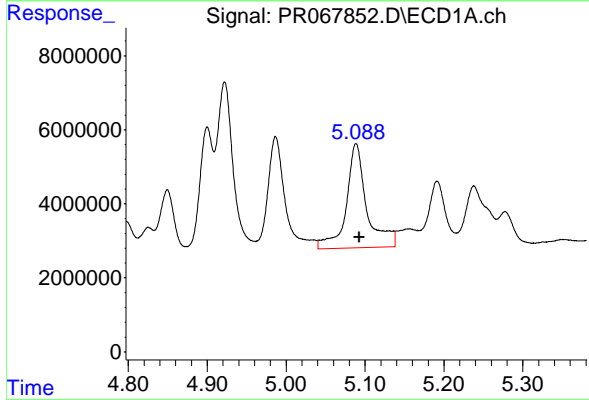
R.T.: 4.922 min  
 Delta R.T.: -0.003 min  
 Response: 103129103  
 Conc: 1547.41 ng/ml

Instrument :  
 ECD\_R  
 ClientSampleId :  
 WC-9-Full Waste ClassMS



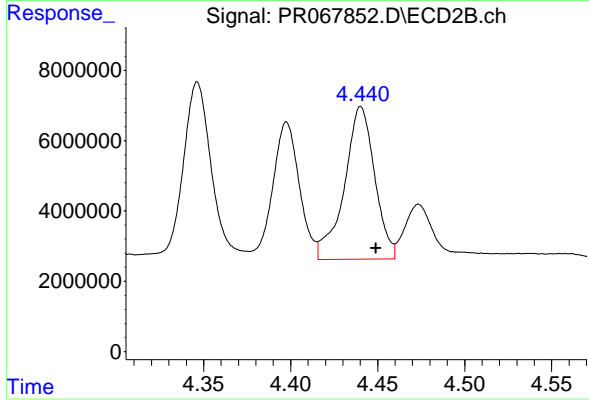
#13 AR-1232-3

R.T.: 4.346 min  
 Delta R.T.: -0.008 min  
 Response: 59702597  
 Conc: 1093.64 ng/ml



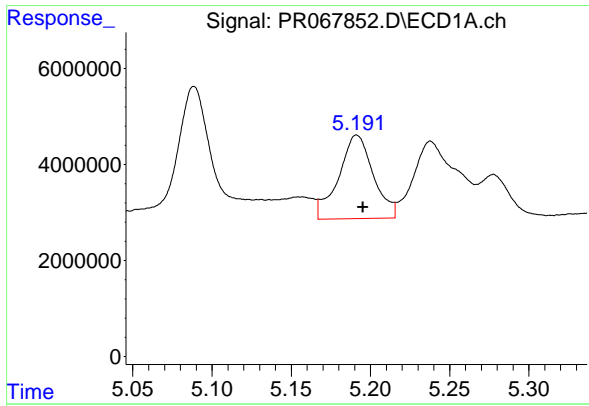
#14 AR-1232-4

R.T.: 5.089 min  
 Delta R.T.: -0.004 min  
 Response: 51065607  
 Conc: 1489.22 ng/ml



#14 AR-1232-4

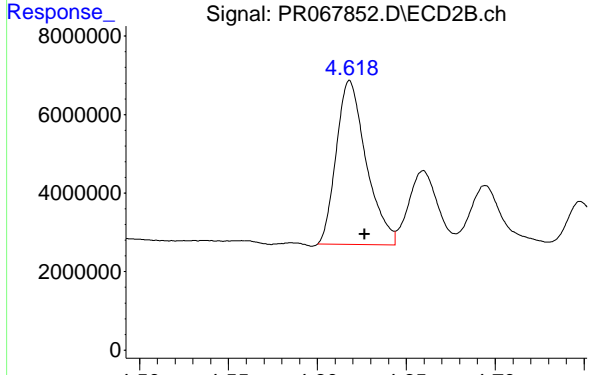
R.T.: 4.440 min  
 Delta R.T.: -0.009 min  
 Response: 52758081  
 Conc: 1170.60 ng/ml



#15 AR-1232-5

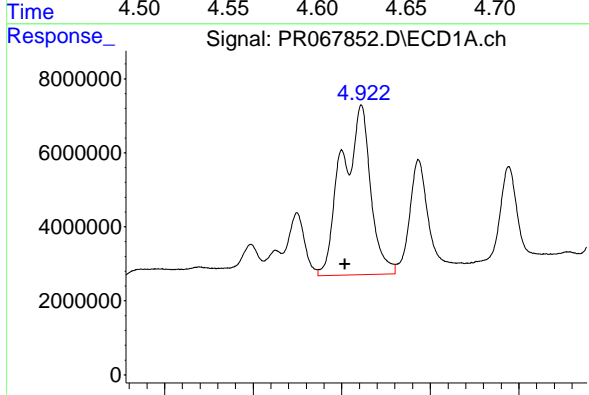
R.T.: 5.191 min  
 Delta R.T.: -0.004 min  
 Response: 26528806  
 Conc: 1302.43 ng/ml

Instrument :  
 ECD\_R  
 ClientSampleId :  
 WC-9-Full Waste ClassMS



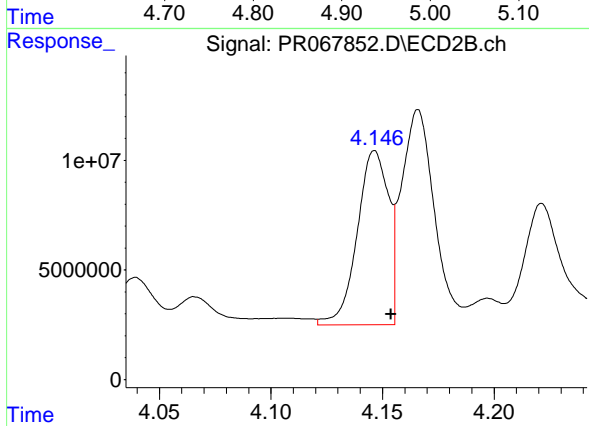
#15 AR-1232-5

R.T.: 4.618 min  
 Delta R.T.: -0.009 min  
 Response: 48776964  
 Conc: 988.58 ng/ml



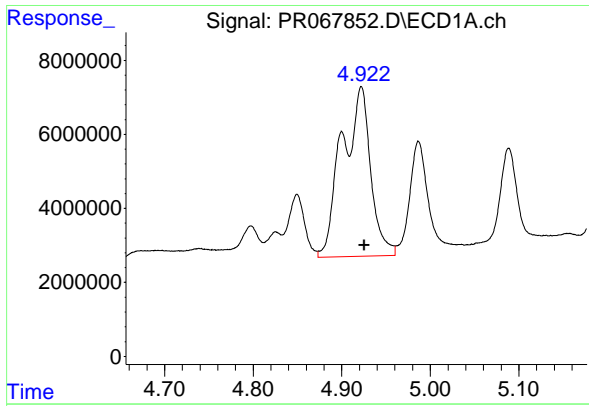
#16 AR-1242-1

R.T.: 4.922 min  
 Delta R.T.: 0.018 min  
 Response: 103129103  
 Conc: 1702.04 ng/ml



#16 AR-1242-1

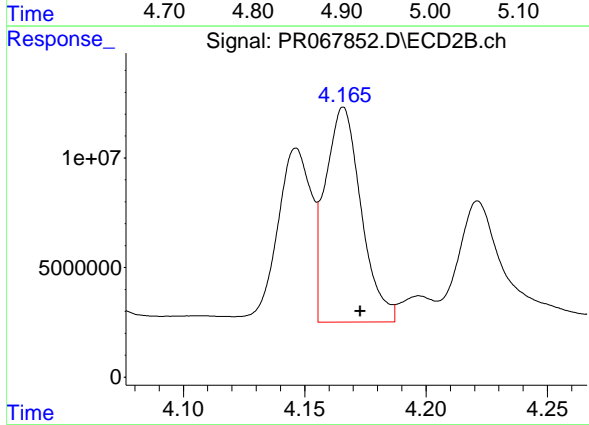
R.T.: 4.146 min  
 Delta R.T.: -0.007 min  
 Response: 77589813  
 Conc: 584.05 ng/ml



#17 AR-1242-2

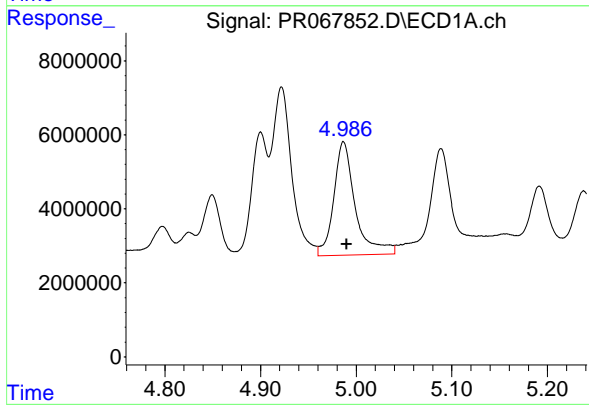
R.T.: 4.922 min  
Delta R.T.: -0.003 min  
Response: 103129103  
Conc: 904.31 ng/ml

Instrument :  
ECD\_R  
ClientSampleId :  
WC-9-Full Waste ClassMS



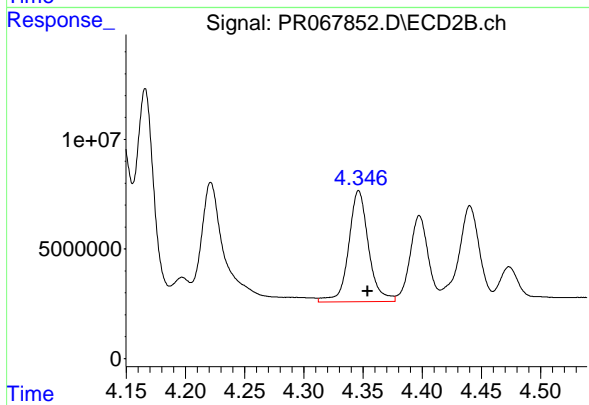
#17 AR-1242-2

R.T.: 4.166 min  
Delta R.T.: -0.007 min  
Response: 100916058  
Conc: 563.51 ng/ml



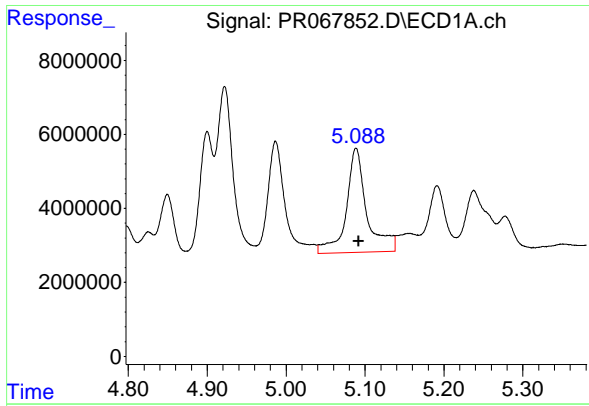
#18 AR-1242-3

R.T.: 4.987 min  
Delta R.T.: -0.003 min  
Response: 47942443  
Conc: 603.03 ng/ml



#18 AR-1242-3

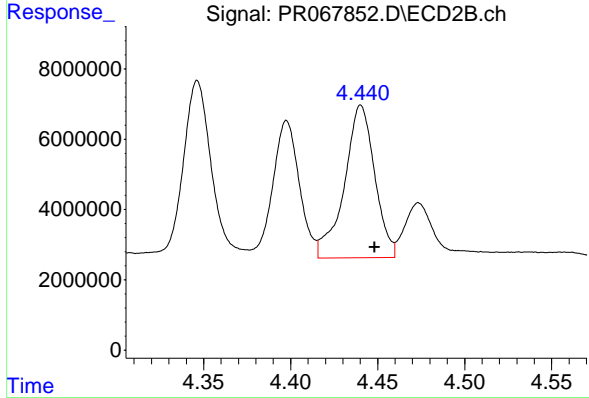
R.T.: 4.346 min  
Delta R.T.: -0.007 min  
Response: 59702597  
Conc: 603.96 ng/ml



#19 AR-1242-4

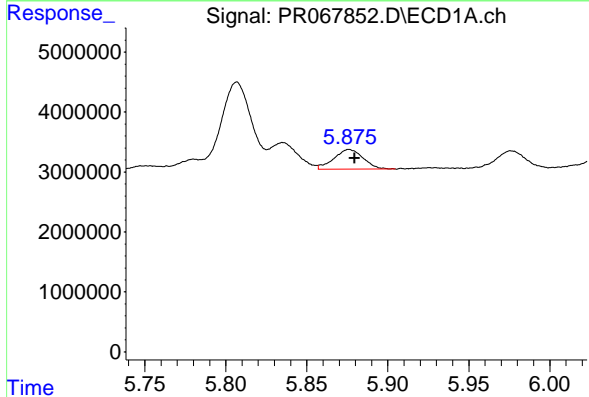
R.T.: 5.089 min  
 Delta R.T.: -0.003 min  
 Response: 51065607  
 Conc: 840.32 ng/ml

Instrument :  
 ECD\_R  
 ClientSampleId :  
 WC-9-Full Waste ClassMS



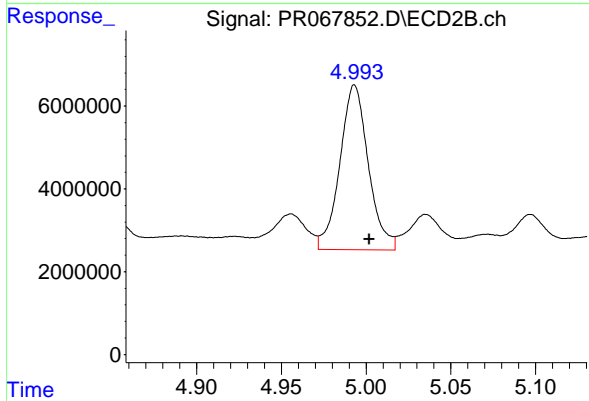
#19 AR-1242-4

R.T.: 4.440 min  
 Delta R.T.: -0.008 min  
 Response: 52758081  
 Conc: 554.80 ng/ml



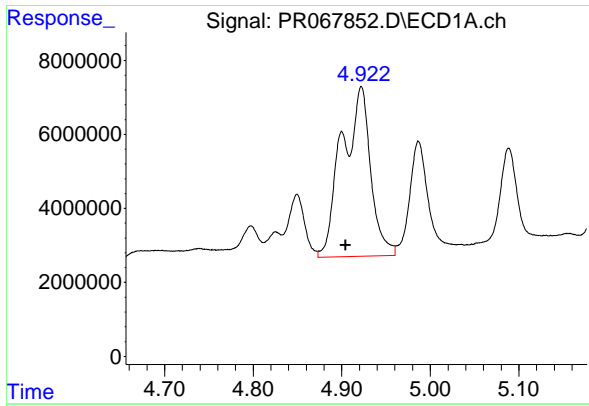
#20 AR-1242-5

R.T.: 5.876 min  
 Delta R.T.: -0.003 min  
 Response: 4079369  
 Conc: 71.36 ng/ml



#20 AR-1242-5

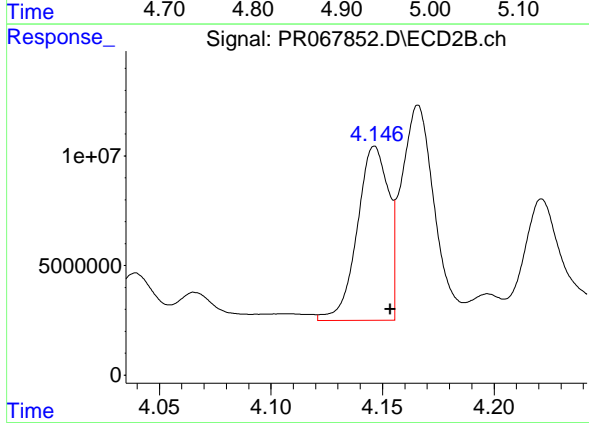
R.T.: 4.993 min  
 Delta R.T.: -0.009 min  
 Response: 46616496  
 Conc: 432.76 ng/ml



#21 AR-1248-1

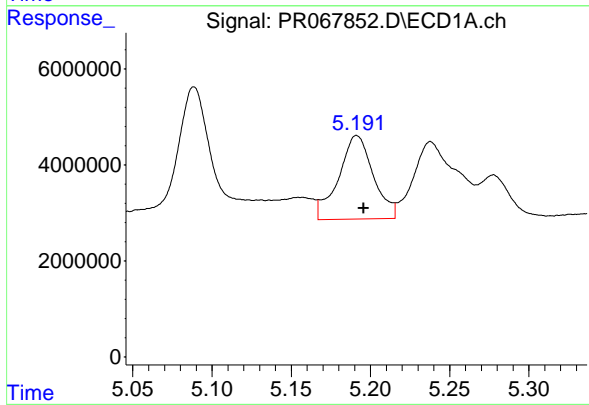
R.T.: 4.922 min  
 Delta R.T.: 0.018 min  
 Response: 103129103  
 Conc: 2304.38 ng/ml

Instrument : ECD\_R  
 ClientSampleId : WC-9-Full Waste ClassMS



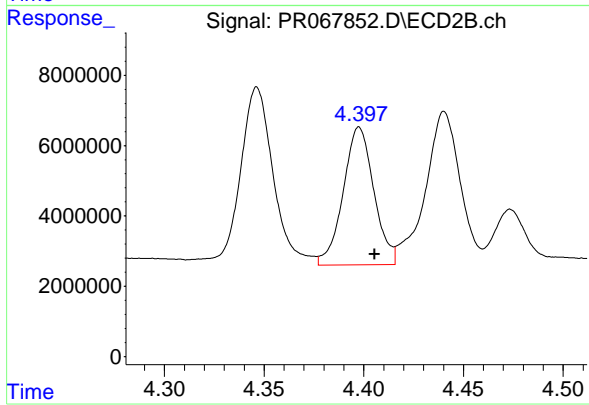
#21 AR-1248-1

R.T.: 4.146 min  
 Delta R.T.: -0.007 min  
 Response: 77589813  
 Conc: 791.43 ng/ml



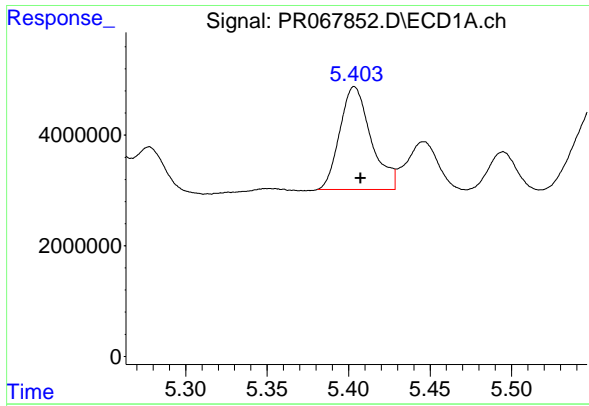
#22 AR-1248-2

R.T.: 5.191 min  
 Delta R.T.: -0.004 min  
 Response: 26528806  
 Conc: 391.76 ng/ml



#22 AR-1248-2

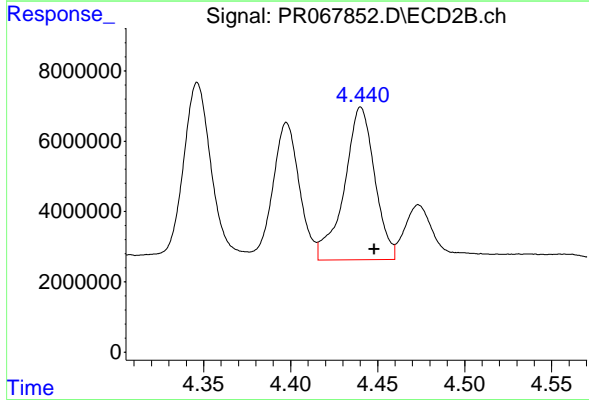
R.T.: 4.398 min  
 Delta R.T.: -0.008 min  
 Response: 41932990  
 Conc: 316.02 ng/ml



#23 AR-1248-3

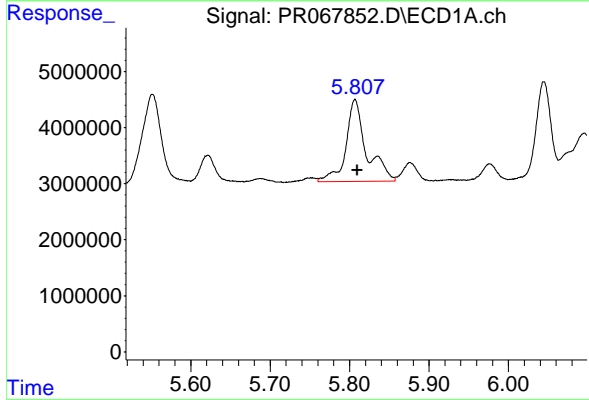
R.T.: 5.404 min  
 Delta R.T.: -0.004 min  
 Response: 24751581  
 Conc: 273.98 ng/ml

Instrument :  
 ECD\_R  
 ClientSampleId :  
 WC-9-Full Waste ClassMS



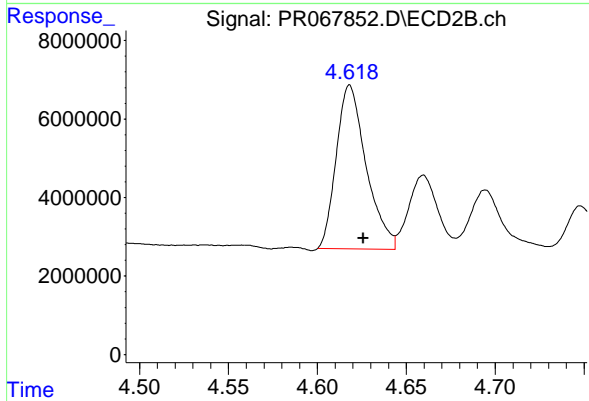
#23 AR-1248-3

R.T.: 4.440 min  
 Delta R.T.: -0.008 min  
 Response: 52758081  
 Conc: 390.27 ng/ml



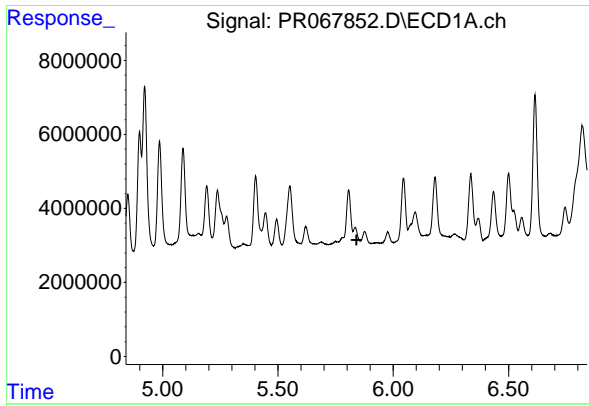
#24 AR-1248-4

R.T.: 5.807 min  
 Delta R.T.: -0.003 min  
 Response: 26092048  
 Conc: 366.04 ng/ml



#24 AR-1248-4

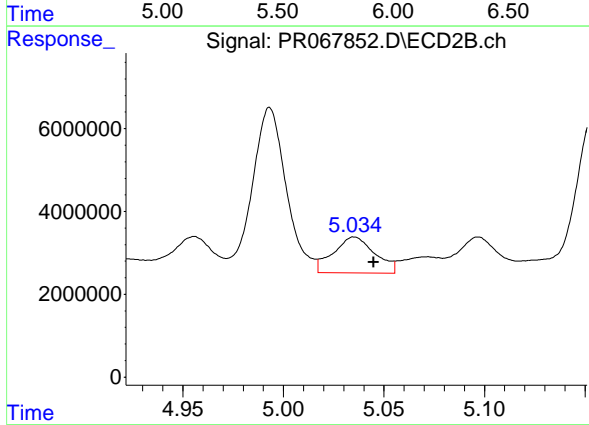
R.T.: 4.618 min  
 Delta R.T.: -0.008 min  
 Response: 48776964  
 Conc: 312.85 ng/ml



#25 AR-1248-5

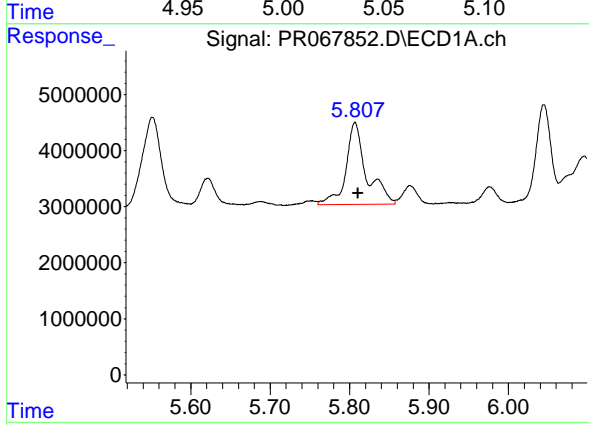
R.T.: 0.000 min  
 Exp R.T.: 5.841 min  
 Response: 0  
 Conc: N.D.

Instrument : ECD\_R  
 ClientSampleId : WC-9-Full Waste ClassMS



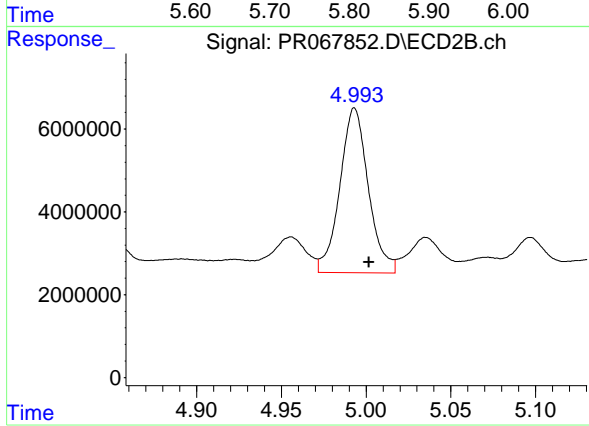
#25 AR-1248-5

R.T.: 5.035 min  
 Delta R.T.: -0.010 min  
 Response: 12583927  
 Conc: 86.84 ng/ml



#26 AR-1254-1

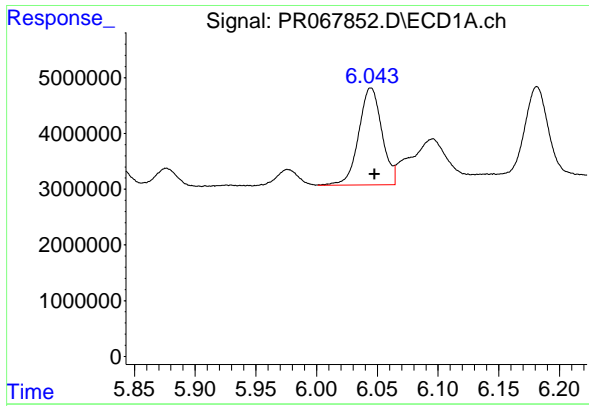
R.T.: 5.807 min  
 Delta R.T.: -0.004 min  
 Response: 26092048  
 Conc: 291.18 ng/ml



#26 AR-1254-1

R.T.: 4.993 min  
 Delta R.T.: -0.009 min  
 Response: 46616496  
 Conc: 215.78 ng/ml

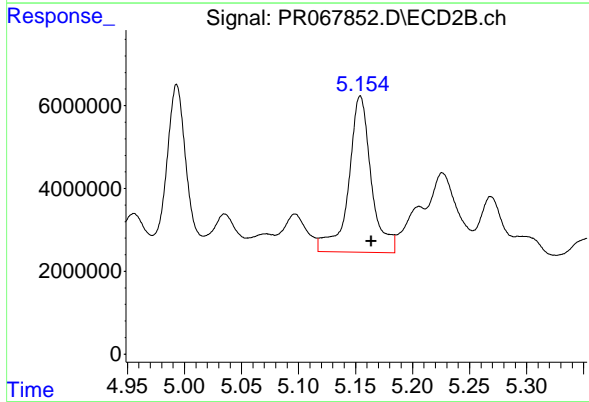




#27 AR-1254-2

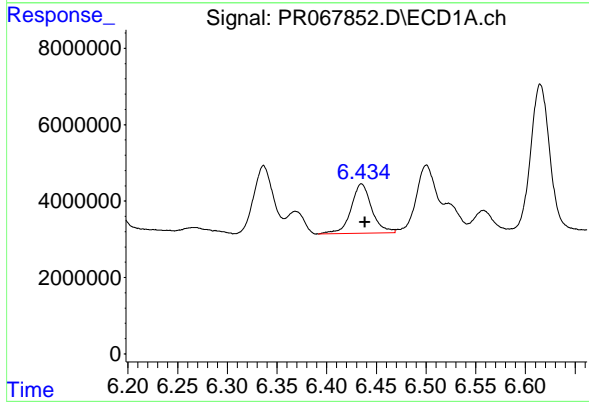
R.T.: 6.045 min  
 Delta R.T.: -0.003 min  
 Response: 23131504  
 Conc: 164.44 ng/ml

Instrument :  
 ECD\_R  
 ClientSampleId :  
 WC-9-Full Waste ClassMS



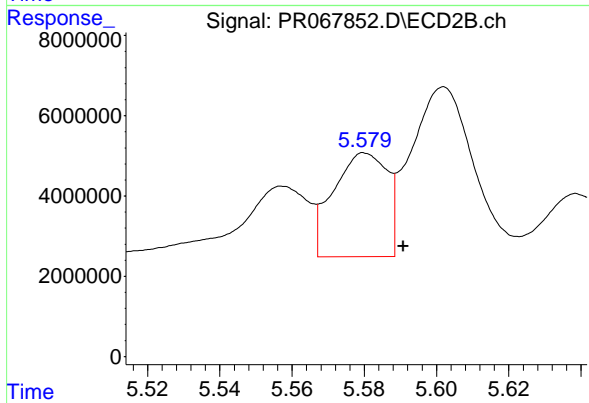
#27 AR-1254-2

R.T.: 5.154 min  
 Delta R.T.: -0.010 min  
 Response: 52198645  
 Conc: 273.76 ng/ml



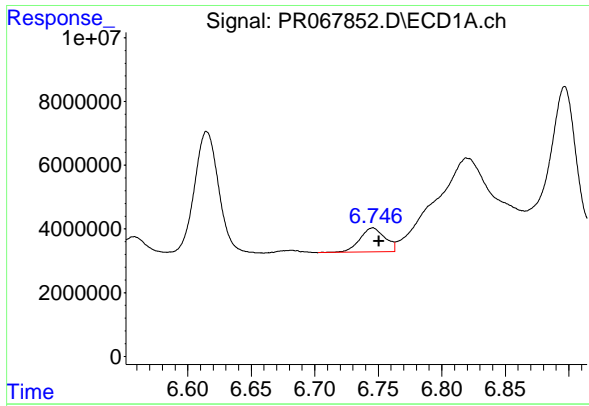
#28 AR-1254-3

R.T.: 6.435 min  
 Delta R.T.: -0.004 min  
 Response: 18710719  
 Conc: 114.60 ng/ml



#28 AR-1254-3

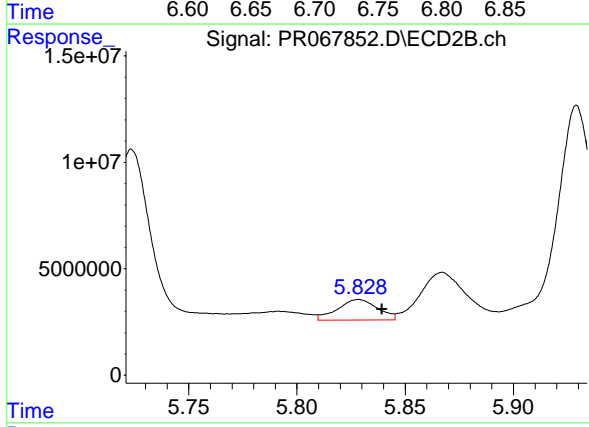
R.T.: 5.580 min  
 Delta R.T.: -0.010 min  
 Response: 26692326  
 Conc: 89.28 ng/ml



#29 AR-1254-4

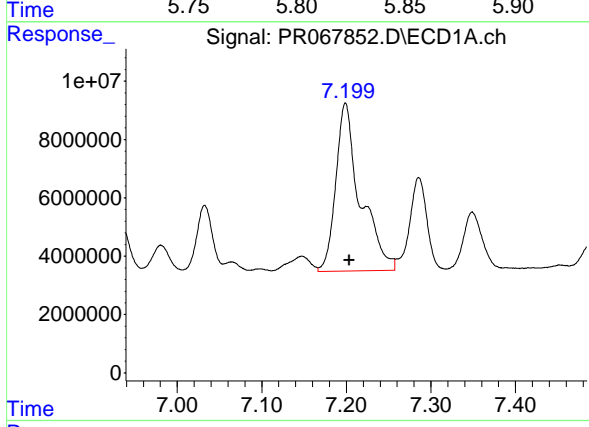
R.T.: 6.746 min  
 Delta R.T.: -0.005 min  
 Response: 10461978  
 Conc: 96.91 ng/ml

Instrument : ECD\_R  
 ClientSampleId : WC-9-Full Waste ClassMS



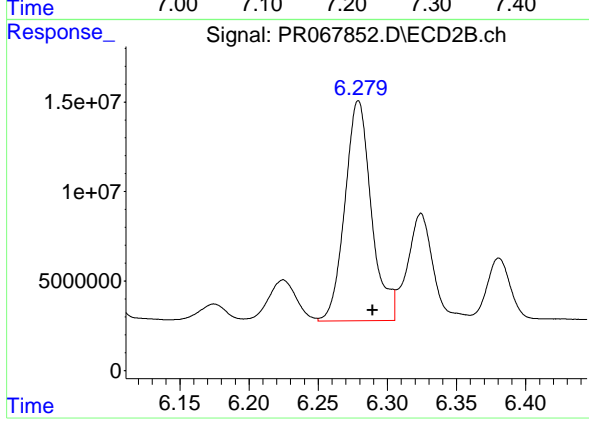
#29 AR-1254-4

R.T.: 5.829 min  
 Delta R.T.: -0.011 min  
 Response: 12334170  
 Conc: 68.99 ng/ml



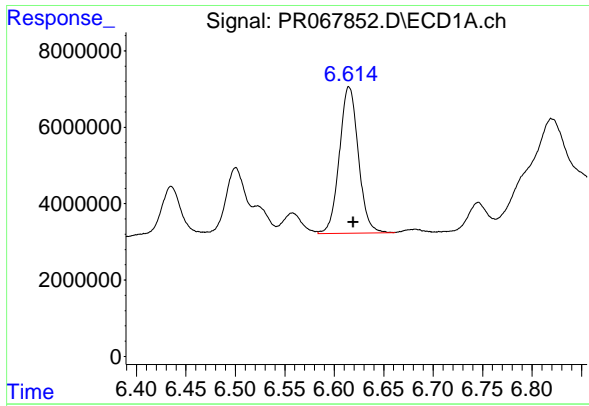
#30 AR-1254-5

R.T.: 7.199 min  
 Delta R.T.: -0.005 min  
 Response: 116194517  
 Conc: 905.44 ng/ml



#30 AR-1254-5

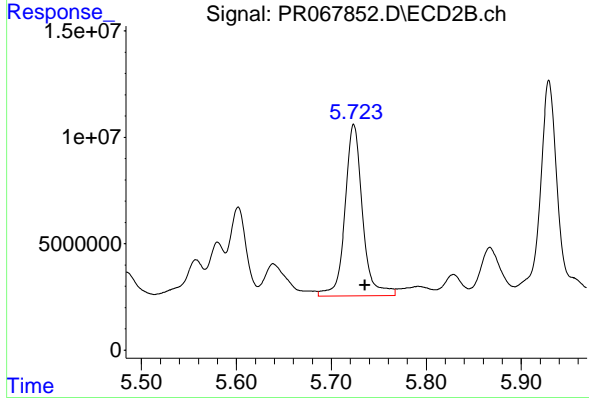
R.T.: 6.279 min  
 Delta R.T.: -0.010 min  
 Response: 164097076  
 Conc: 615.68 ng/ml



#31 AR-1260-1

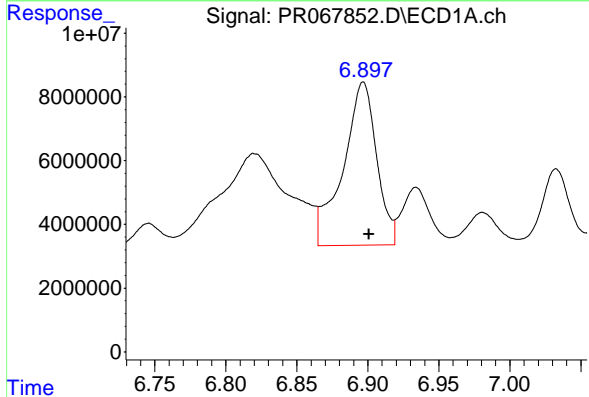
R.T.: 6.615 min  
 Delta R.T.: -0.004 min  
 Response: 51191239  
 Conc: 435.14 ng/ml

Instrument :  
 ECD\_R  
 ClientSampleId :  
 WC-9-Full Waste ClassMS



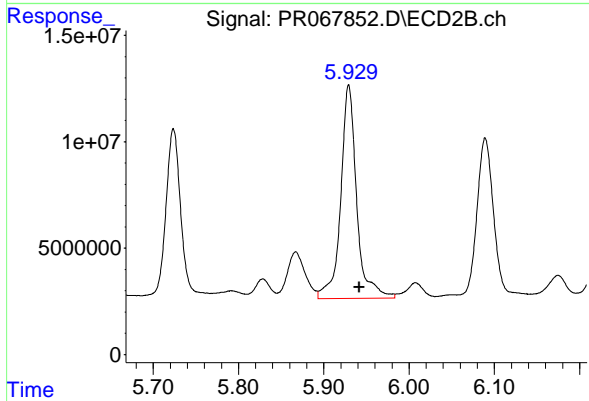
#31 AR-1260-1

R.T.: 5.724 min  
 Delta R.T.: -0.012 min  
 Response: 103140212  
 Conc: 486.21 ng/ml



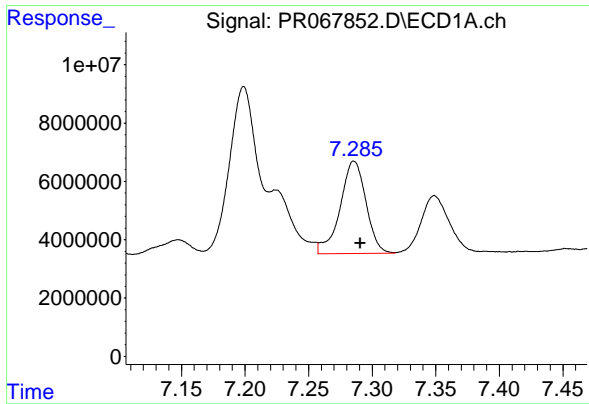
#32 AR-1260-2

R.T.: 6.897 min  
 Delta R.T.: -0.004 min  
 Response: 84275839  
 Conc: 605.90 ng/ml



#32 AR-1260-2

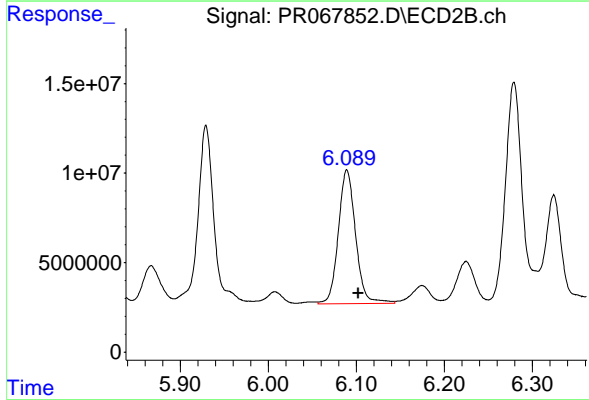
R.T.: 5.929 min  
 Delta R.T.: -0.013 min  
 Response: 130632239  
 Conc: 523.40 ng/ml



#33 AR-1260-3

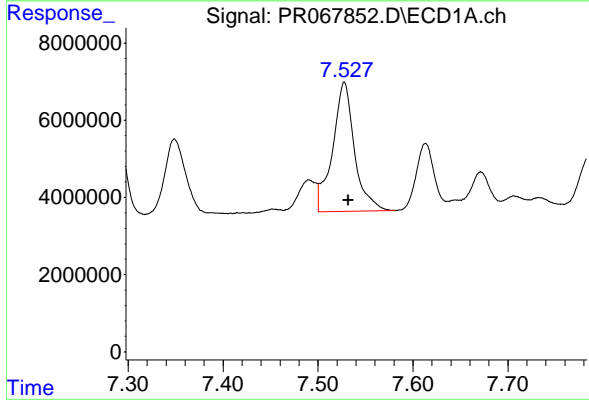
R.T.: 7.286 min  
 Delta R.T.: -0.005 min  
 Response: 45011786  
 Conc: 401.15 ng/ml

Instrument :  
 ECD\_R  
 ClientSampleId :  
 WC-9-Full Waste ClassMS



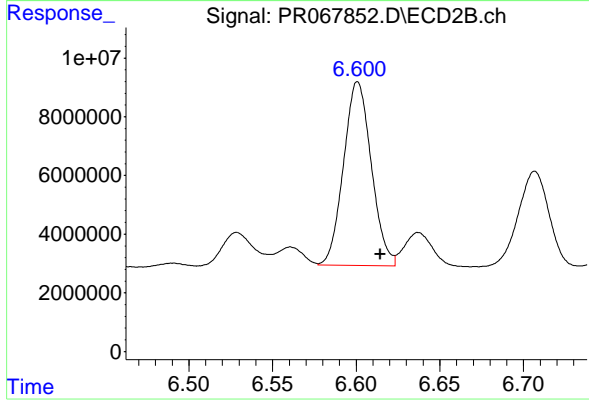
#33 AR-1260-3

R.T.: 6.089 min  
 Delta R.T.: -0.013 min  
 Response: 102191199  
 Conc: 427.59 ng/ml



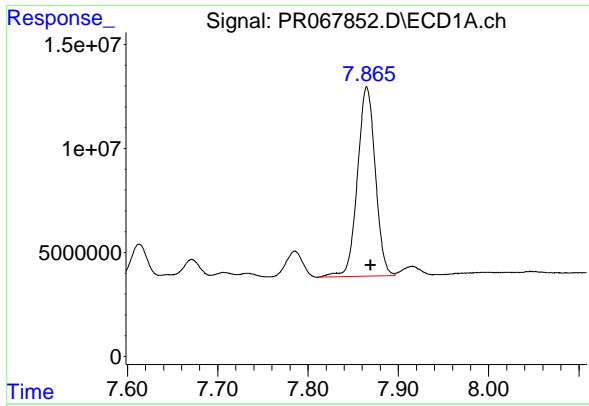
#34 AR-1260-4

R.T.: 7.528 min  
 Delta R.T.: -0.005 min  
 Response: 53893889  
 Conc: 431.54 ng/ml



#34 AR-1260-4

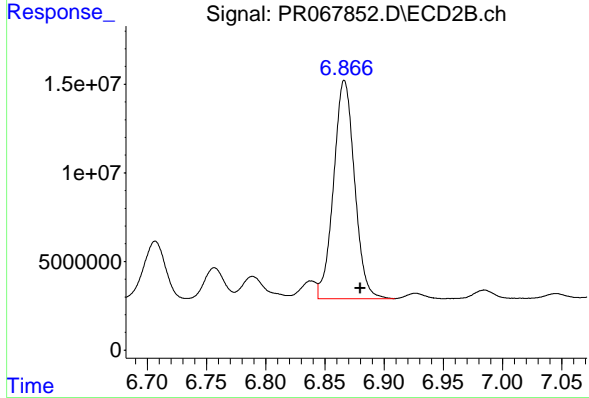
R.T.: 6.601 min  
 Delta R.T.: -0.013 min  
 Response: 72471914  
 Conc: 394.04 ng/ml



#35 AR-1260-5

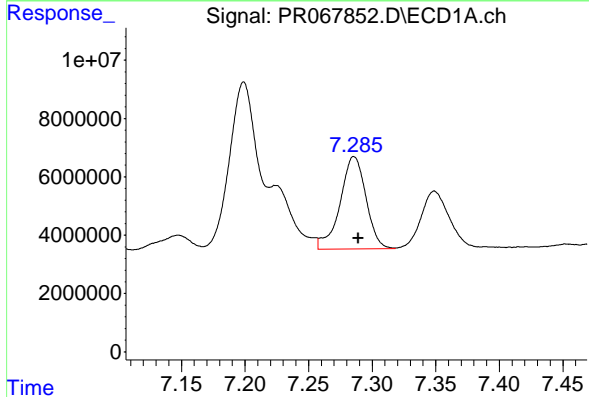
R.T.: 7.865 min  
 Delta R.T.: -0.004 min  
 Response: 125042140  
 Conc: 452.72 ng/ml

Instrument : ECD\_R  
 ClientSampleId : WC-9-Full Waste ClassMS



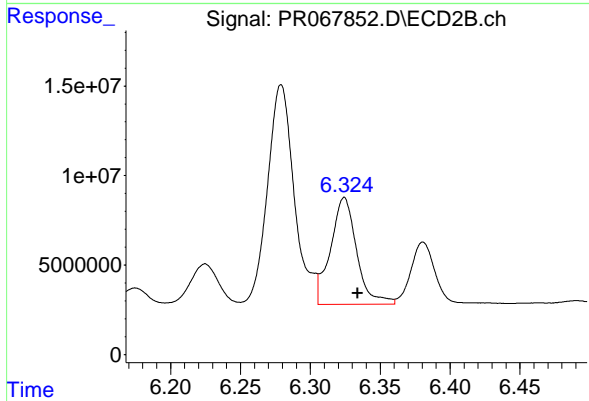
#35 AR-1260-5

R.T.: 6.866 min  
 Delta R.T.: -0.013 min  
 Response: 151966131  
 Conc: 384.65 ng/ml



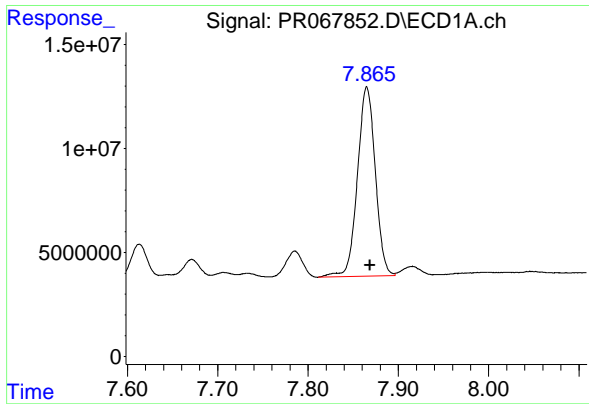
#36 AR-1262-1

R.T.: 7.286 min  
 Delta R.T.: -0.003 min  
 Response: 45011786  
 Conc: 259.60 ng/ml



#36 AR-1262-1

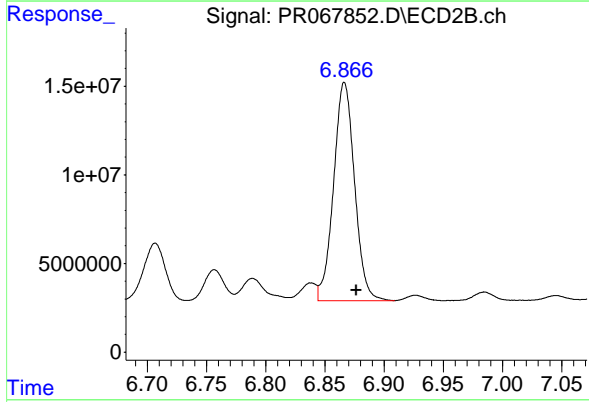
R.T.: 6.324 min  
 Delta R.T.: -0.010 min  
 Response: 78240830  
 Conc: 277.98 ng/ml



#37 AR-1262-2

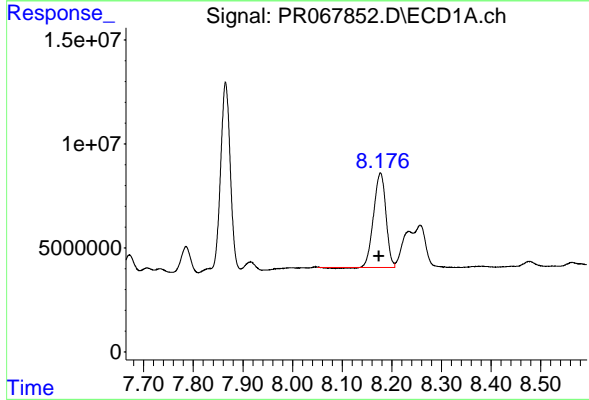
R.T.: 7.865 min  
 Delta R.T.: -0.003 min  
 Response: 125042140  
 Conc: 373.55 ng/ml

Instrument : ECD\_R  
 ClientSampleId : WC-9-Full Waste ClassMS



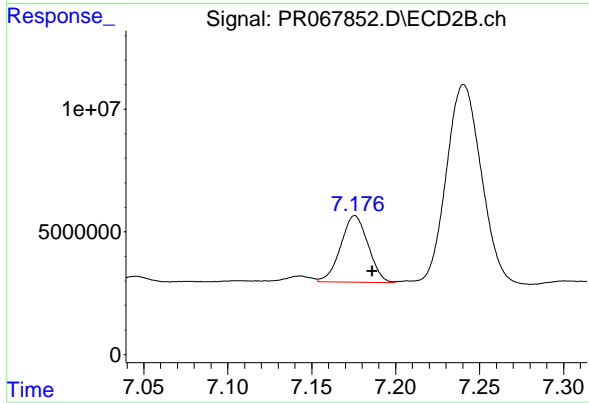
#37 AR-1262-2

R.T.: 6.866 min  
 Delta R.T.: -0.010 min  
 Response: 151966131  
 Conc: 317.97 ng/ml



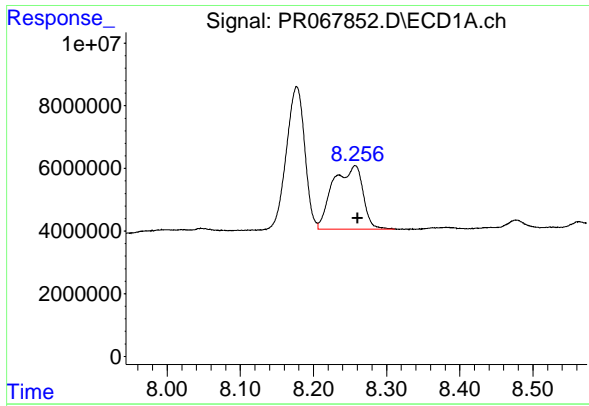
#38 AR-1262-3

R.T.: 8.177 min  
 Delta R.T.: 0.003 min  
 Response: 77108770  
 Conc: 313.35 ng/ml



#38 AR-1262-3

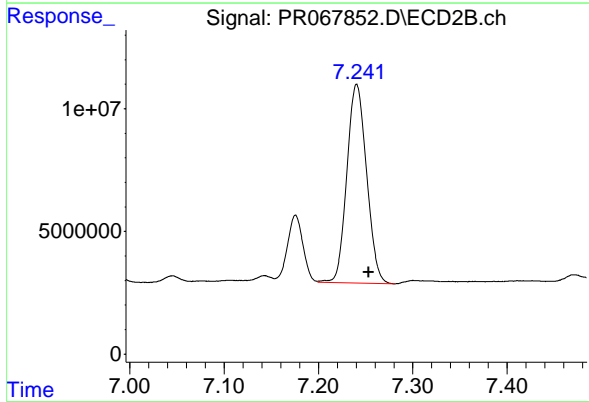
R.T.: 7.176 min  
 Delta R.T.: -0.010 min  
 Response: 30745969  
 Conc: 162.36 ng/ml



#39 AR-1262-4

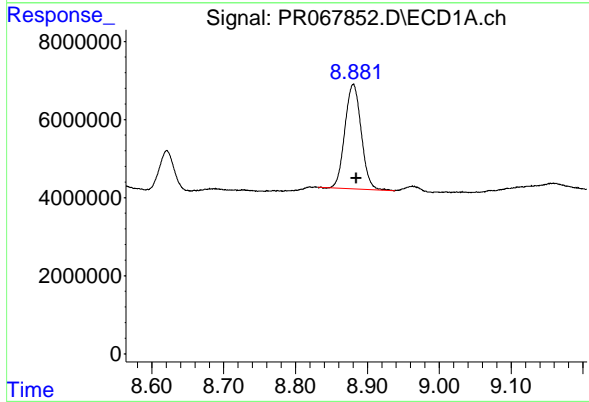
R.T.: 8.257 min  
 Delta R.T.: -0.004 min  
 Response: 57526867  
 Conc: 261.93 ng/ml

Instrument : ECD\_R  
 ClientSampleId : WC-9-Full Waste ClassMS



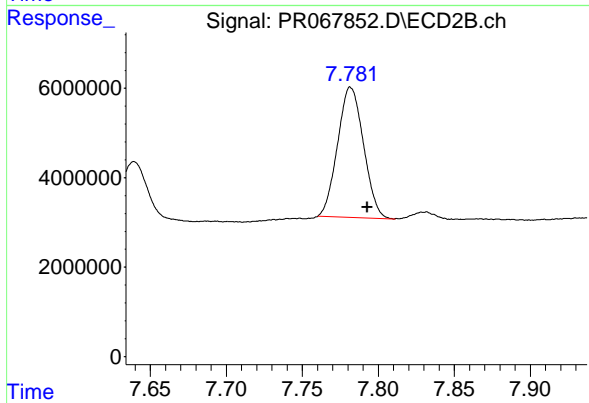
#39 AR-1262-4

R.T.: 7.241 min  
 Delta R.T.: -0.013 min  
 Response: 117728182  
 Conc: 330.84 ng/ml



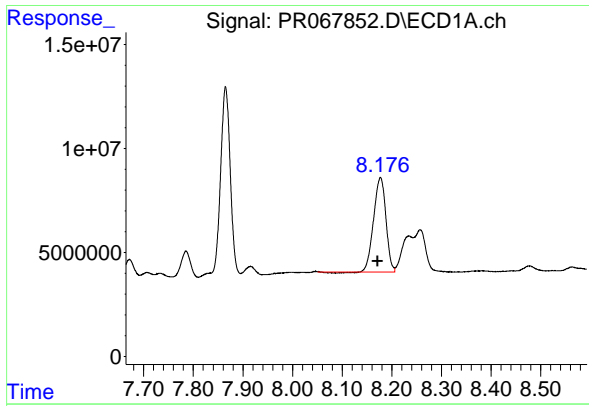
#40 AR-1262-5

R.T.: 8.880 min  
 Delta R.T.: -0.004 min  
 Response: 42298202  
 Conc: 262.96 ng/ml



#40 AR-1262-5

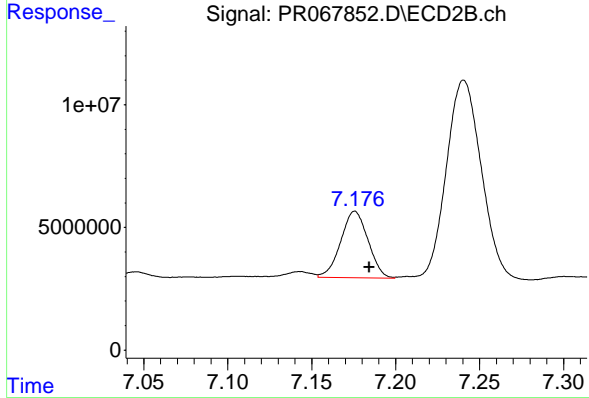
R.T.: 7.782 min  
 Delta R.T.: -0.011 min  
 Response: 34547343  
 Conc: 229.31 ng/ml



#41 AR-1268-1

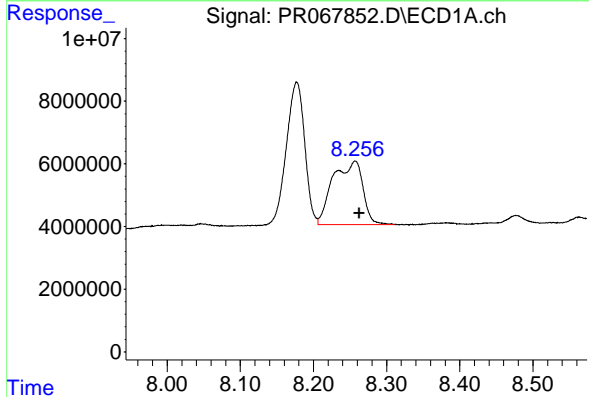
R.T.: 8.177 min  
 Delta R.T.: 0.005 min  
 Response: 77108770  
 Conc: 172.75 ng/ml

Instrument : ECD\_R  
 ClientSampleId : WC-9-Full Waste ClassMS



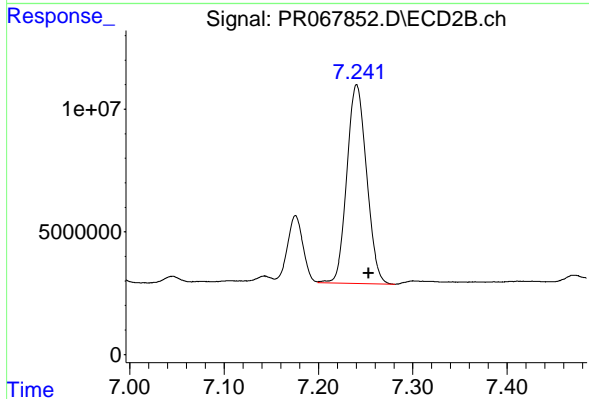
#41 AR-1268-1

R.T.: 7.176 min  
 Delta R.T.: -0.009 min  
 Response: 30745969  
 Conc: 59.08 ng/ml



#42 AR-1268-2

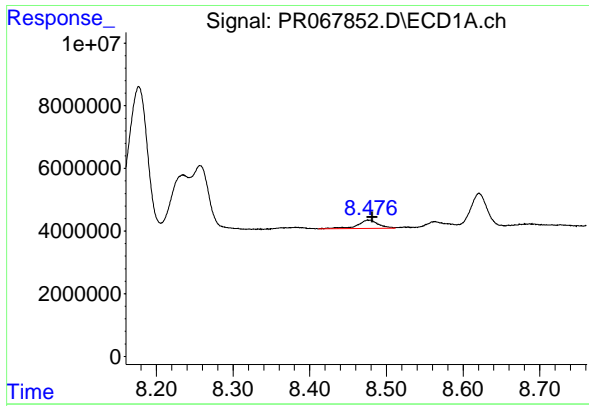
R.T.: 8.257 min  
 Delta R.T.: -0.006 min  
 Response: 57526867  
 Conc: 122.15 ng/ml



#42 AR-1268-2

R.T.: 7.241 min  
 Delta R.T.: -0.013 min  
 Response: 117728182  
 Conc: 248.83 ng/ml

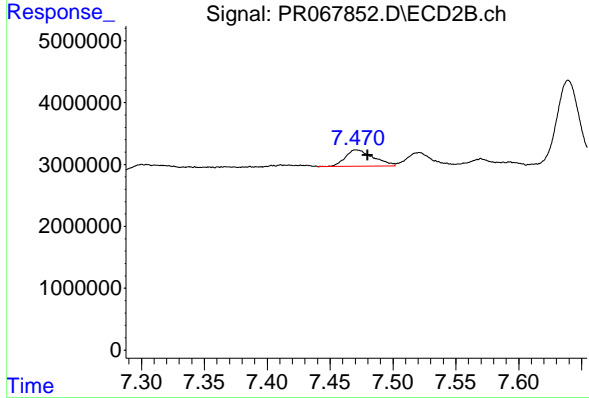




#43 AR-1268-3

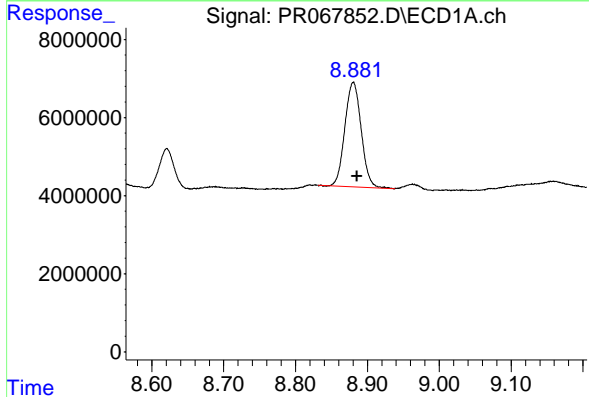
R.T.: 8.477 min  
 Delta R.T.: -0.004 min  
 Response: 4960165  
 Conc: 11.19 ng/ml

Instrument : ECD\_R  
 ClientSampleId : WC-9-Full Waste ClassMS



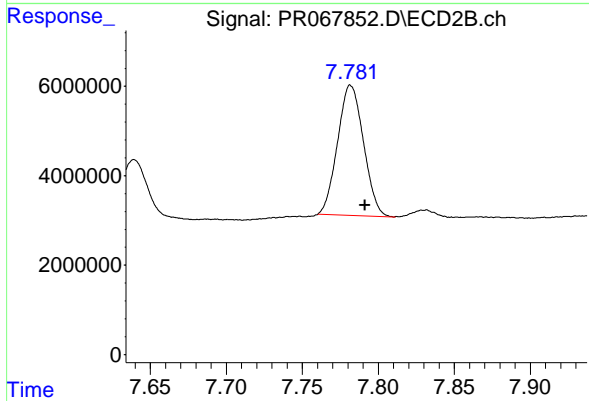
#43 AR-1268-3

R.T.: 7.471 min  
 Delta R.T.: -0.009 min  
 Response: 4054533  
 Conc: 9.95 ng/ml



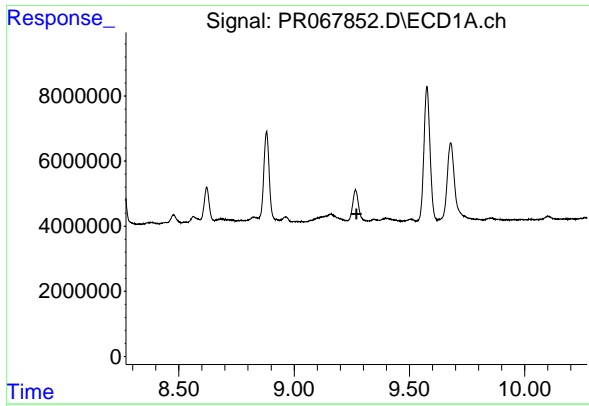
#44 AR-1268-4

R.T.: 8.880 min  
 Delta R.T.: -0.005 min  
 Response: 42298202  
 Conc: 252.14 ng/ml



#44 AR-1268-4

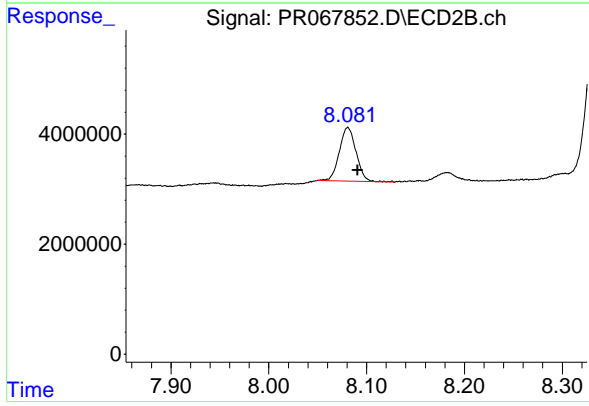
R.T.: 7.782 min  
 Delta R.T.: -0.009 min  
 Response: 34547343  
 Conc: 212.11 ng/ml



#45 AR-1268-5

R.T.: 0.000 min  
 Exp R.T.: 9.271 min  
 Response: 0  
 Conc: N.D.

Instrument :  
 ECD\_R  
 ClientSampleId :  
 WC-9-Full Waste ClassMS



#45 AR-1268-5

R.T.: 8.081 min  
 Delta R.T.: -0.010 min  
 Response: 11588204  
 Conc: 9.80 ng/ml