

Data Path : Z:\pestpcbsrv\HPCHEM1\ECD\_R\Data\PR072924\  
 Data File : PR067853.D  
 Signal(s) : Signal #1: ECD1A.ch Signal #2: ECD2B.ch  
 Acq On : 29 Jul 2024 20:04  
 Operator : AJ\MA  
 Sample : P3387-02MSD  
 Misc :  
 ALS Vial : 33 Sample Multiplier: 1

**Instrument :**  
 ECD\_R  
**ClientSampleId :**  
 WC-9-Full Waste ClassMSD

**Manual Integrations**  
**APPROVED**

Reviewed By :Yogesh Patel 07/31/2024  
 Supervised By :Ankita Jodhani 07/31/2024

Integration File signal 1: autoint1.e  
 Integration File signal 2: autoint2.e  
 Quant Time: Jul 31 06:54:41 2024  
 Quant Method : Z:\pestpcbsrv\HPCHEM1\ECD\_R\Method\PR072524.M  
 Quant Title : GC EXTRACTABLES  
 QLast Update : Wed Jul 31 06:52:43 2024  
 Response via : Initial Calibration  
 Integrator: ChemStation

Volume Inj. : 2 µl  
 Signal #1 Phase : ZB-MR2 Signal #2 Phase: ZB-MR2  
 Signal #1 Info : 30Mx0.32mmx 0.50µ Signal #2 Info : 30M x 0.32mm x 0.25µm

Compound	RT#1	RT#2	Resp#1	Resp#2	ng/ml	ng/ml
-----						
System Monitoring Compounds						
1) SA Tetrachlo...	3.678	3.014	62590648	98765228	19.444	19.055
2) SA Decachlor...	9.575	8.336	77343255	55284905	20.099	17.266
Target Compounds						
3) L1 AR-1016-1	4.900	4.146	34329732	69563522	471.287m	430.755m
4) L1 AR-1016-2	4.922	4.166	64383185	103.0E6	457.929m	468.211m
5) L1 AR-1016-3	4.986	4.346	42789155	53975453	454.981m	450.342m
6) L1 AR-1016-4	5.089	4.397	40419928	39074079	537.618m	412.740m
7) L1 AR-1016-5	5.404	4.619	26529697	49972607	402.771	426.115
31) L7 AR-1260-1	6.615	5.724	53831132	95067267	457.581	448.151m
32) L7 AR-1260-2	6.896	5.930	96627728	126.6E6	694.708	507.357m#
33) L7 AR-1260-3	7.286	6.089	46807653	103.2E6	417.152	431.950m
34) L7 AR-1260-4	7.526	6.601	52316144	74293807	418.902m	403.948
35) L7 AR-1260-5	7.864	6.866	130.7E6	171.1E6	473.095	433.079

(f)=RT Delta > 1/2 Window (#)=Amounts differ by > 25% (m)=manual int.

Data Path : Z:\pestpcbsrv\HPCHEM1\ECD\_R\Data\PR072924\  
 Data File : PR067853.D  
 Signal(s) : Signal #1: ECD1A.ch Signal #2: ECD2B.ch  
 Acq On : 29 Jul 2024 20:04  
 Operator : AJ\MA  
 Sample : P3387-02MSD  
 Misc :  
 ALS Vial : 33 Sample Multiplier: 1

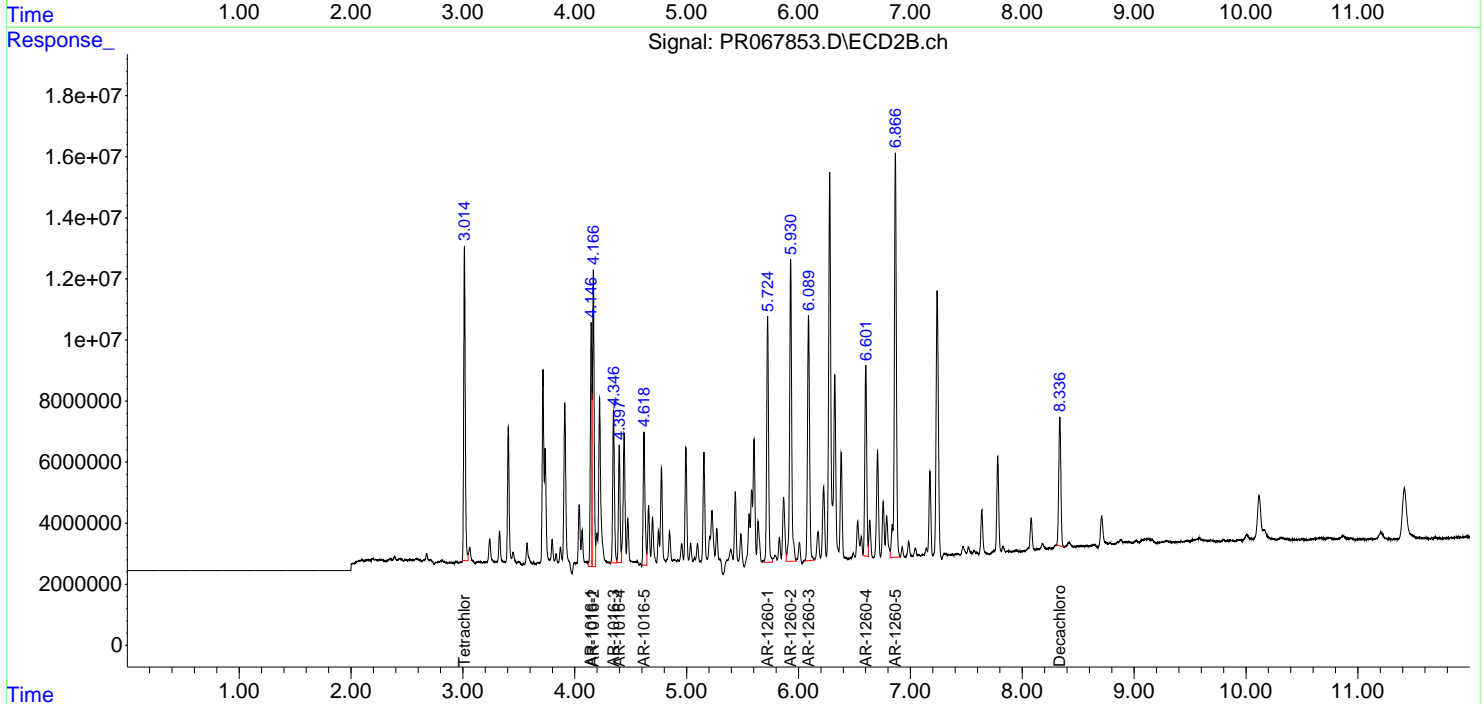
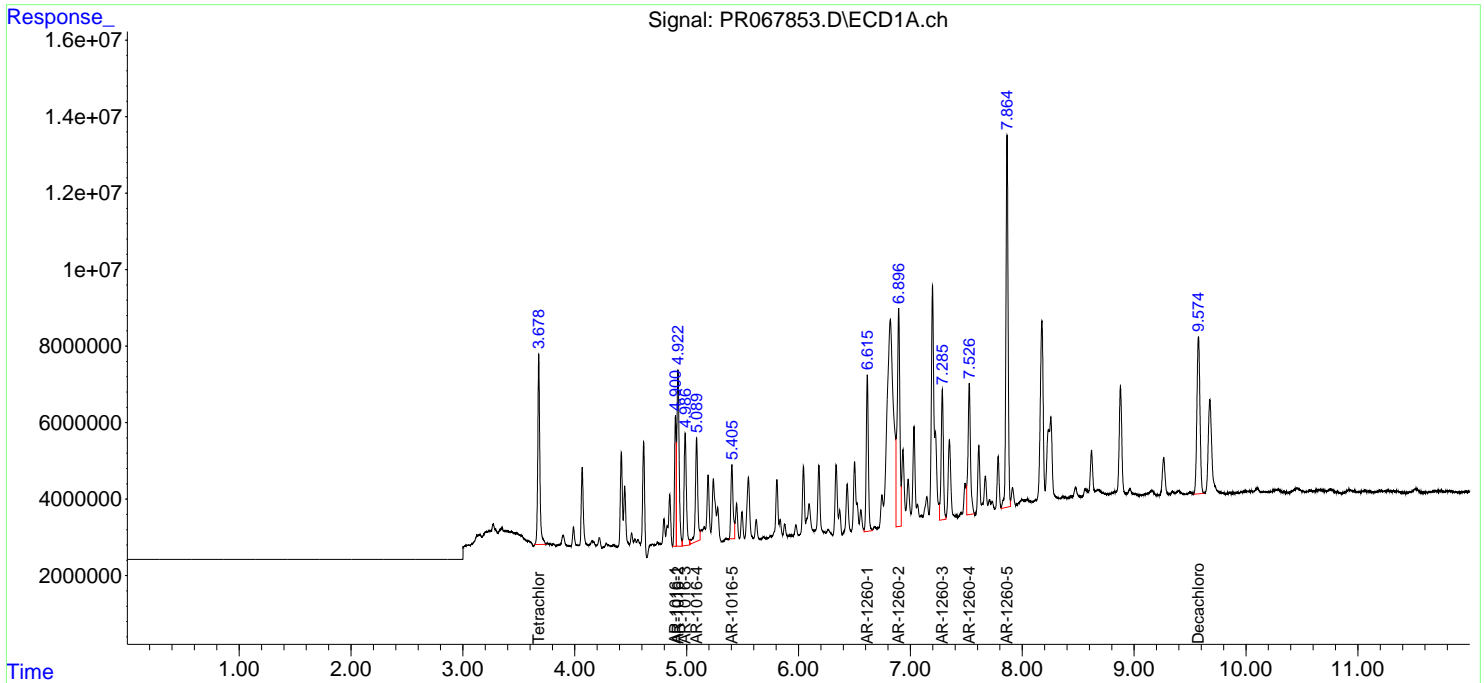
**Instrument :**  
 ECD\_R  
**ClientSampleId :**  
 WC-9-Full Waste ClassMSD

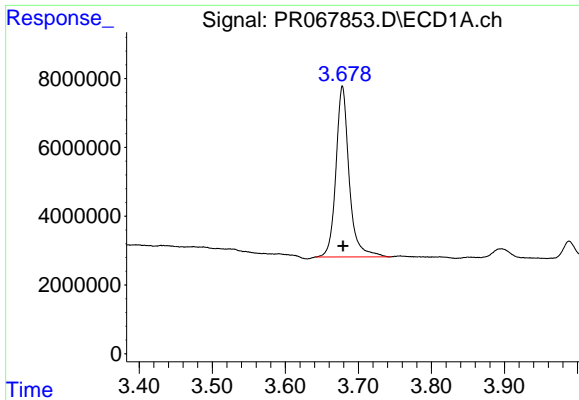
**Manual Integrations**  
**APPROVED**

Reviewed By :Yogesh Patel 07/31/2024  
 Supervised By :Ankita Jodhani 07/31/2024

Integration File signal 1: autoint1.e  
 Integration File signal 2: autoint2.e  
 Quant Time: Jul 31 06:54:41 2024  
 Quant Method : Z:\pestpcbsrv\HPCHEM1\ECD\_R\Method\PR072524.M  
 Quant Title : GC EXTRACTABLES  
 QLast Update : Wed Jul 31 06:52:43 2024  
 Response via : Initial Calibration  
 Integrator: ChemStation

Volume Inj. : 2 µl  
 Signal #1 Phase : ZB-MR1 Signal #2 Phase: ZB-MR2  
 Signal #1 Info : 30Mx0.32mmx 0.50µ Signal #2 Info : 30M x 0.32mm x 0.25µm



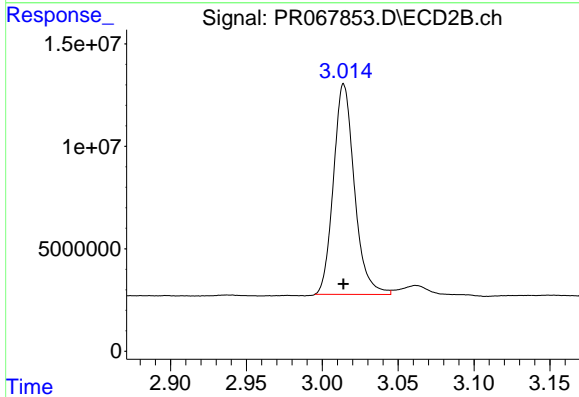


#1 Tetrachloro-m-xylene  
 R.T.: 3.678 min  
 Delta R.T.: 0.000 min  
 Response: 62590648  
 Conc: 19.44 ng/ml

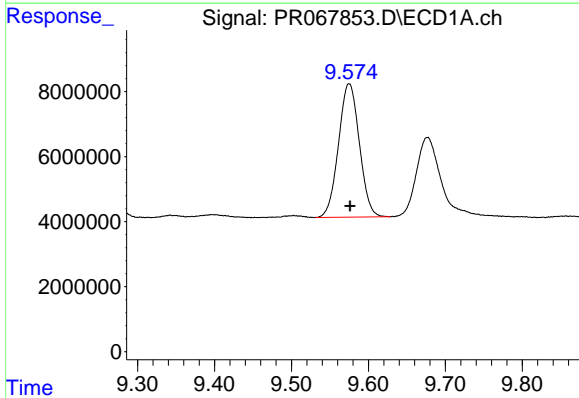
Instrument : ECD\_R  
 ClientSampleId : WC-9-Full Waste ClassMSD

Manual Integrations  
 APPROVED

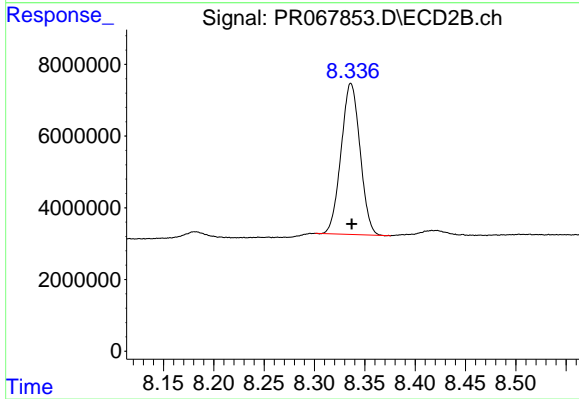
Reviewed By :Yogesh Patel 07/31/2024  
 Supervised By :Ankita Jodhani 07/31/2024



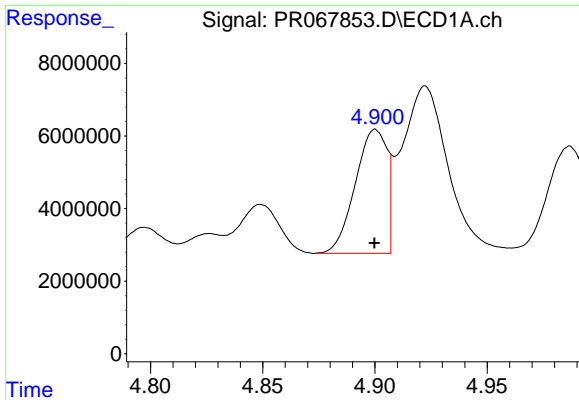
#1 Tetrachloro-m-xylene  
 R.T.: 3.014 min  
 Delta R.T.: 0.000 min  
 Response: 98765228  
 Conc: 19.05 ng/ml



#2 Decachlorobiphenyl  
 R.T.: 9.575 min  
 Delta R.T.: -0.001 min  
 Response: 77343255  
 Conc: 20.10 ng/ml



#2 Decachlorobiphenyl  
 R.T.: 8.336 min  
 Delta R.T.: 0.000 min  
 Response: 55284905  
 Conc: 17.27 ng/ml



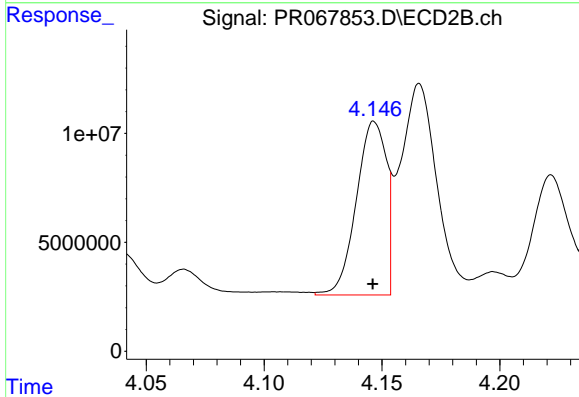
#3 AR-1016-1

R.T.: 4.900 min  
 Delta R.T.: 0.000 min  
 Response: 34329732  
 Conc: 471.29 ng/ml

Instrument : ECD\_R  
 ClientSampleId : WC-9-Full Waste ClassMSD

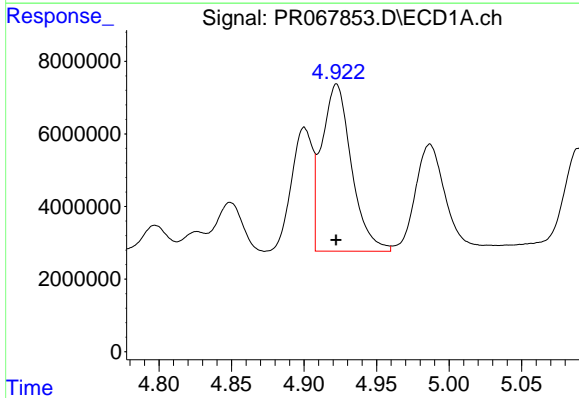
Manual Integrations  
 APPROVED

Reviewed By :Yogesh Patel 07/31/2024  
 Supervised By :Ankita Jodhani 07/31/2024



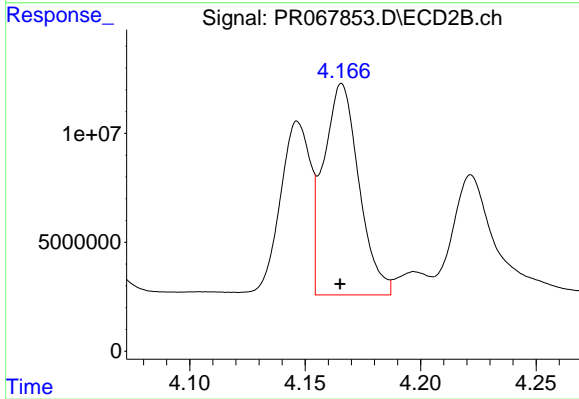
#3 AR-1016-1

R.T.: 4.146 min  
 Delta R.T.: 0.000 min  
 Response: 69563522  
 Conc: 430.76 ng/ml m



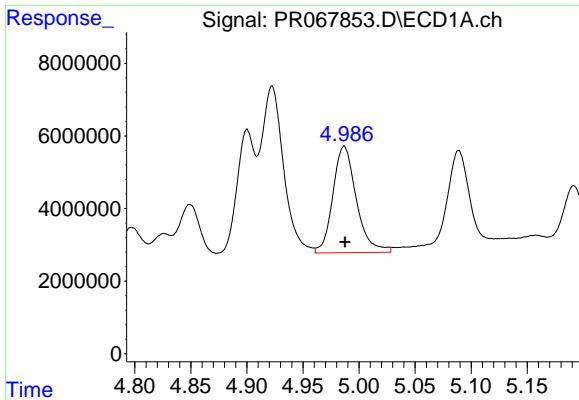
#4 AR-1016-2

R.T.: 4.922 min  
 Delta R.T.: 0.000 min  
 Response: 64383185  
 Conc: 457.93 ng/ml m



#4 AR-1016-2

R.T.: 4.166 min  
 Delta R.T.: 0.000 min  
 Response: 103014408  
 Conc: 468.21 ng/ml m



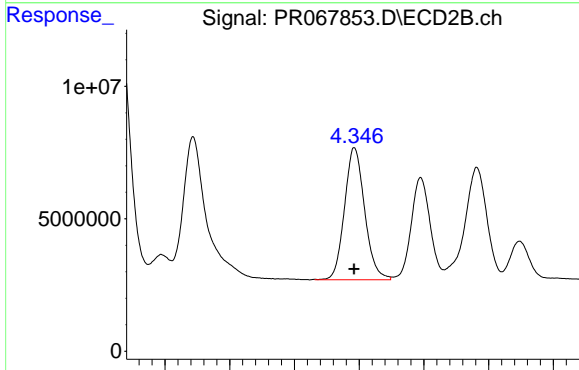
#5 AR-1016-3

R.T.: 4.986 min  
 Delta R.T.: -0.001 min  
 Response: 42789155  
 Conc: 454.98 ng/ml

Instrument : ECD\_R  
 ClientSampleId : WC-9-Full Waste ClassMSD

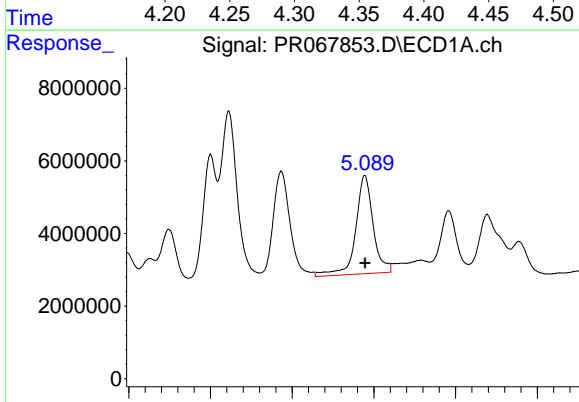
Manual Integrations  
 APPROVED

Reviewed By :Yogesh Patel 07/31/2024  
 Supervised By :Ankita Jodhani 07/31/2024



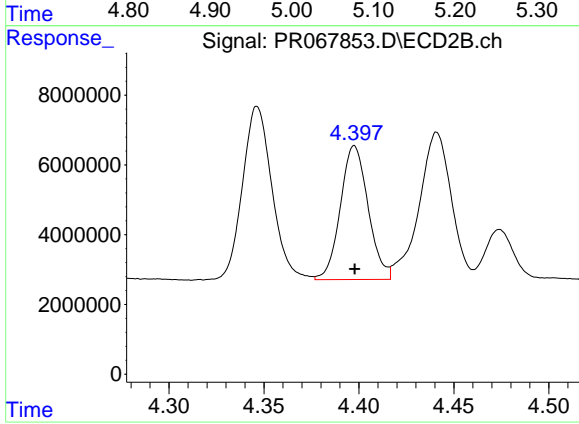
#5 AR-1016-3

R.T.: 4.346 min  
 Delta R.T.: 0.000 min  
 Response: 53975453  
 Conc: 450.34 ng/ml m



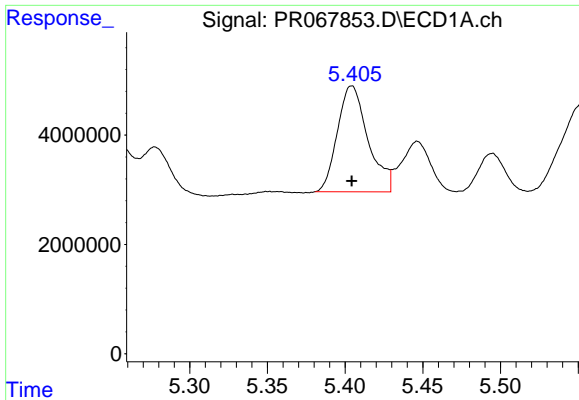
#6 AR-1016-4

R.T.: 5.089 min  
 Delta R.T.: 0.000 min  
 Response: 40419928  
 Conc: 537.62 ng/ml m



#6 AR-1016-4

R.T.: 4.397 min  
 Delta R.T.: 0.000 min  
 Response: 39074079  
 Conc: 412.74 ng/ml m



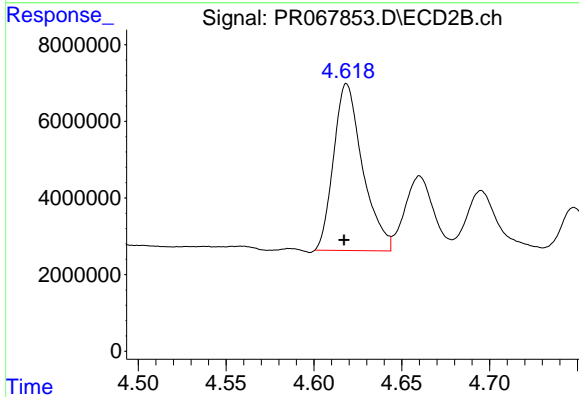
#7 AR-1016-5

R.T.: 5.404 min  
 Delta R.T.: 0.000 min  
 Response: 26529697  
 Conc: 402.77 ng/ml

Instrument : ECD\_R  
 ClientSampleId : WC-9-Full Waste ClassMSD

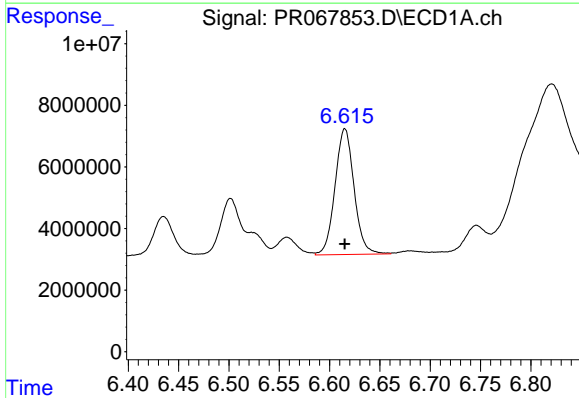
Manual Integrations  
 APPROVED

Reviewed By :Yogesh Patel 07/31/2024  
 Supervised By :Ankita Jodhani 07/31/2024



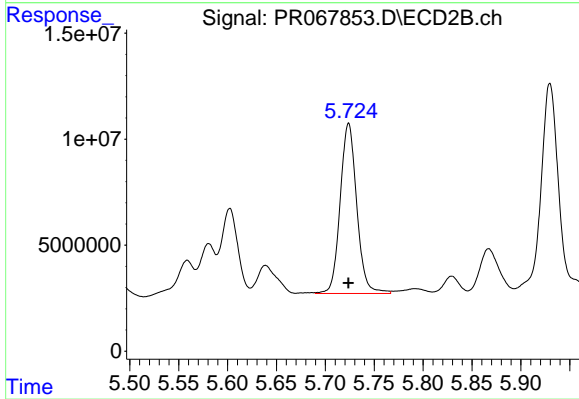
#7 AR-1016-5

R.T.: 4.619 min  
 Delta R.T.: 0.002 min  
 Response: 49972607  
 Conc: 426.12 ng/ml



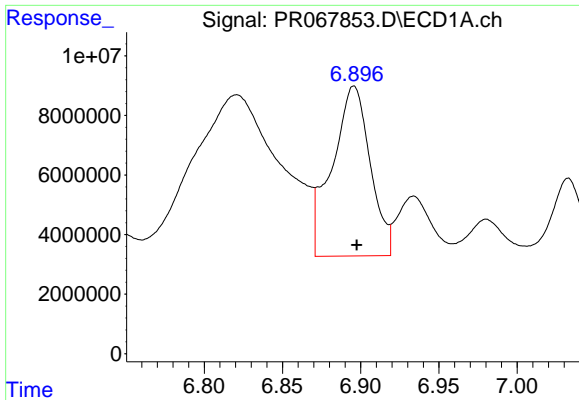
#31 AR-1260-1

R.T.: 6.615 min  
 Delta R.T.: 0.000 min  
 Response: 53831132  
 Conc: 457.58 ng/ml



#31 AR-1260-1

R.T.: 5.724 min  
 Delta R.T.: 0.000 min  
 Response: 95067267  
 Conc: 448.15 ng/ml m



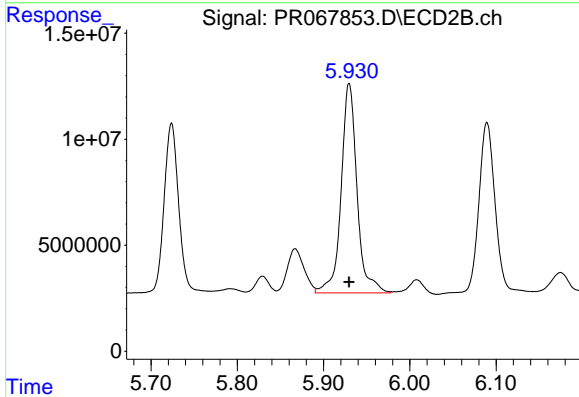
#32 AR-1260-2

R.T.: 6.896 min  
 Delta R.T.: -0.002 min  
 Response: 96627728  
 Conc: 694.71 ng/ml

Instrument : ECD\_R  
 ClientSampleId : WC-9-Full Waste ClassMSD

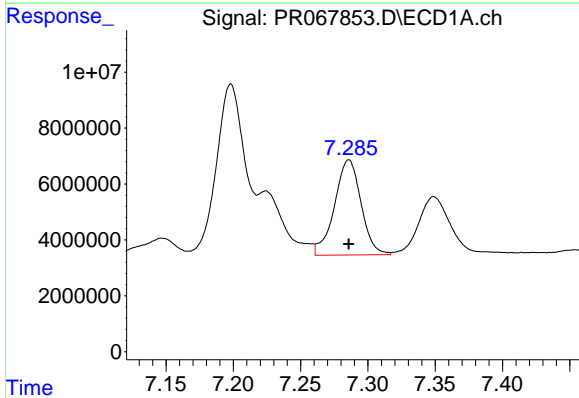
Manual Integrations  
 APPROVED

Reviewed By :Yogesh Patel 07/31/2024  
 Supervised By :Ankita Jodhani 07/31/2024



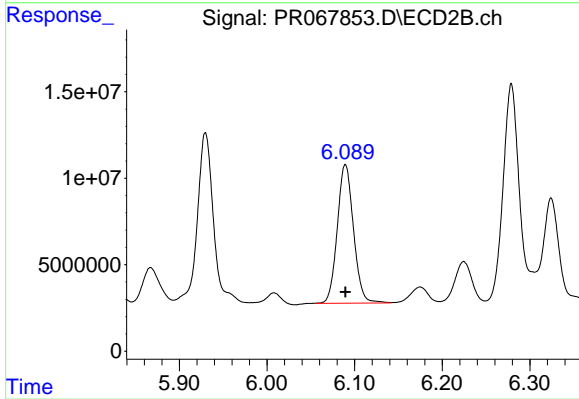
#32 AR-1260-2

R.T.: 5.930 min  
 Delta R.T.: 0.000 min  
 Response: 126627740  
 Conc: 507.36 ng/ml m



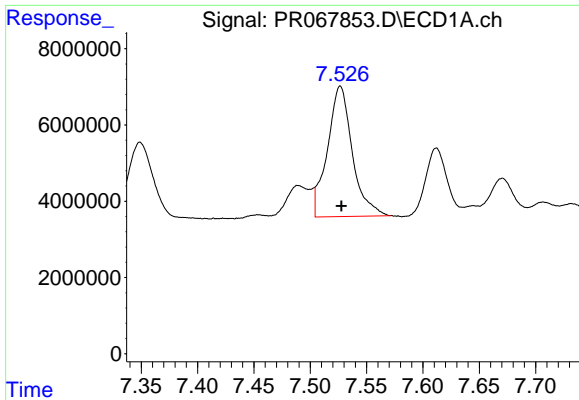
#33 AR-1260-3

R.T.: 7.286 min  
 Delta R.T.: 0.000 min  
 Response: 46807653  
 Conc: 417.15 ng/ml



#33 AR-1260-3

R.T.: 6.089 min  
 Delta R.T.: 0.000 min  
 Response: 103234095  
 Conc: 431.95 ng/ml m



#34 AR-1260-4

R.T.: 7.526 min  
 Delta R.T.: -0.001 min  
 Response: 52316144  
 Conc: 418.90 ng/ml

Instrument :

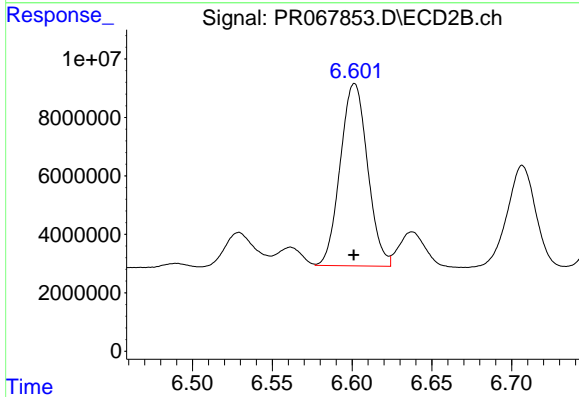
ECD\_R

ClientSampleId :

WC-9-Full Waste ClassMSD

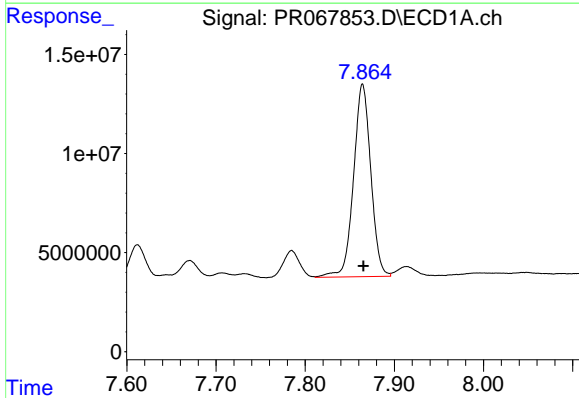
Manual Integrations  
 APPROVED

Reviewed By :Yogesh Patel 07/31/2024  
 Supervised By :Ankita Jodhani 07/31/2024



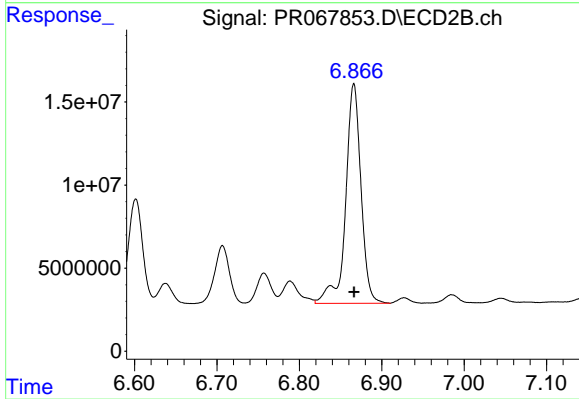
#34 AR-1260-4

R.T.: 6.601 min  
 Delta R.T.: 0.000 min  
 Response: 74293807  
 Conc: 403.95 ng/ml



#35 AR-1260-5

R.T.: 7.864 min  
 Delta R.T.: 0.000 min  
 Response: 130669976  
 Conc: 473.10 ng/ml



#35 AR-1260-5

R.T.: 6.866 min  
 Delta R.T.: 0.000 min  
 Response: 171097882  
 Conc: 433.08 ng/ml