

Data Path : Z:\pestpcbsrv\HPCHEM1\ECD_R\Data\PR073019\
 Data File : PR039845.D
 Signal(s) : Signal #1: ECD1A.ch Signal #2: ECD2B.ch
 Acq On : 30 Jul 2019 19:18
 Operator : SM\AJ
 Sample : K4058-02
 Misc :
 ALS Vial : 8 Sample Multiplier: 1

Instrument :
 ECD_R
 ClientSampleId :
 S9-02-A

Integration File signal 1: autoint1.e
 Integration File signal 2: autoint2.e
 Quant Time: Jul 31 08:42:32 2019
 Quant Method : Z:\pestpcbsrv\HPCHEM1\ECD_R\Method\PR072219.M
 Quant Title : GC EXTRACTABLES
 QLast Update : Mon Jul 22 14:03:19 2019
 Response via : Initial Calibration
 Integrator: ChemStation

Volume Inj. : 2 µl
 Signal #1 Phase : ZB-MR1 Signal #2 Phase: ZB-MR2
 Signal #1 Info : 30Mx0.32mmx 0.50µ Signal #2 Info : 30M x 0.32mm x 0.25µm

Compound	RT#1	RT#2	Resp#1	Resp#2	ng/ml	ng/ml

System Monitoring Compounds						
1) SA Tetrachlo...	3.753	4.598	42085913	178.8E6	17.536	17.840
2) SA Decachlor...	8.689	10.328	36112355	146.4E6	14.534	15.600

Target Compounds

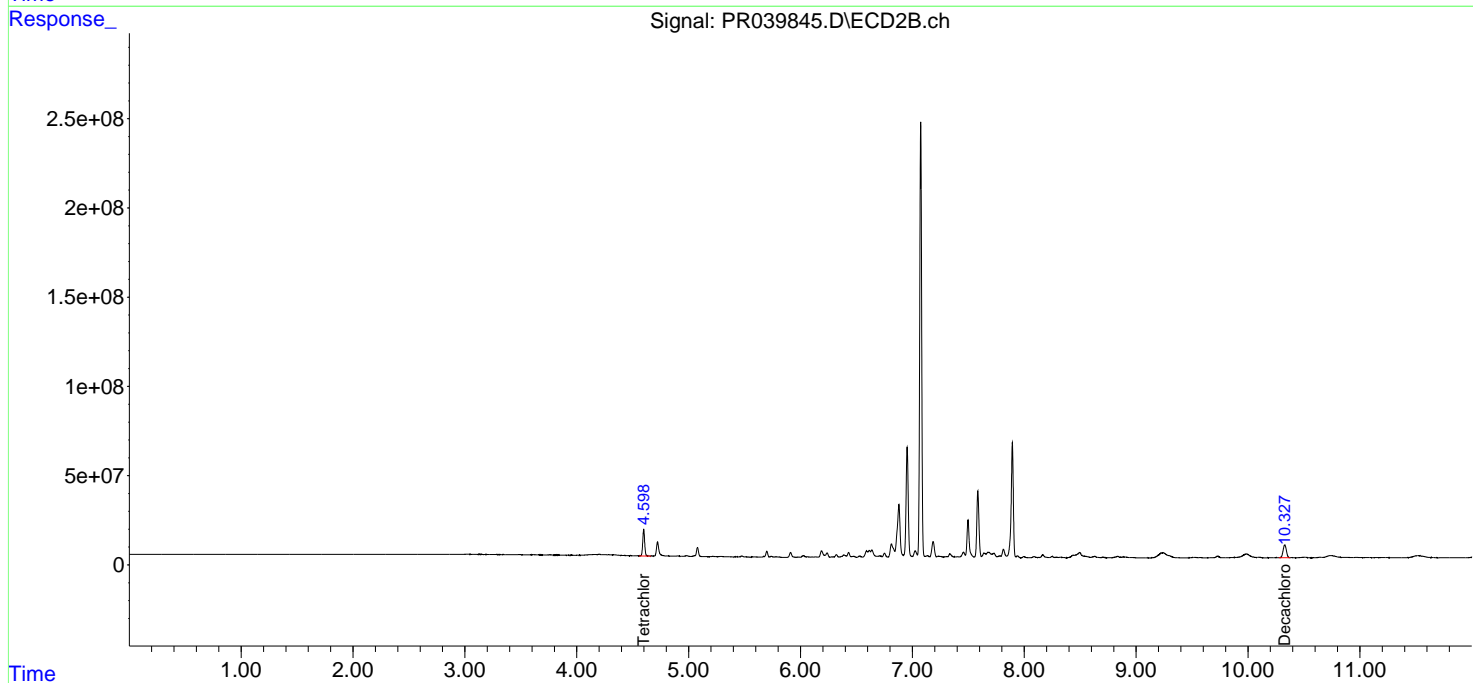
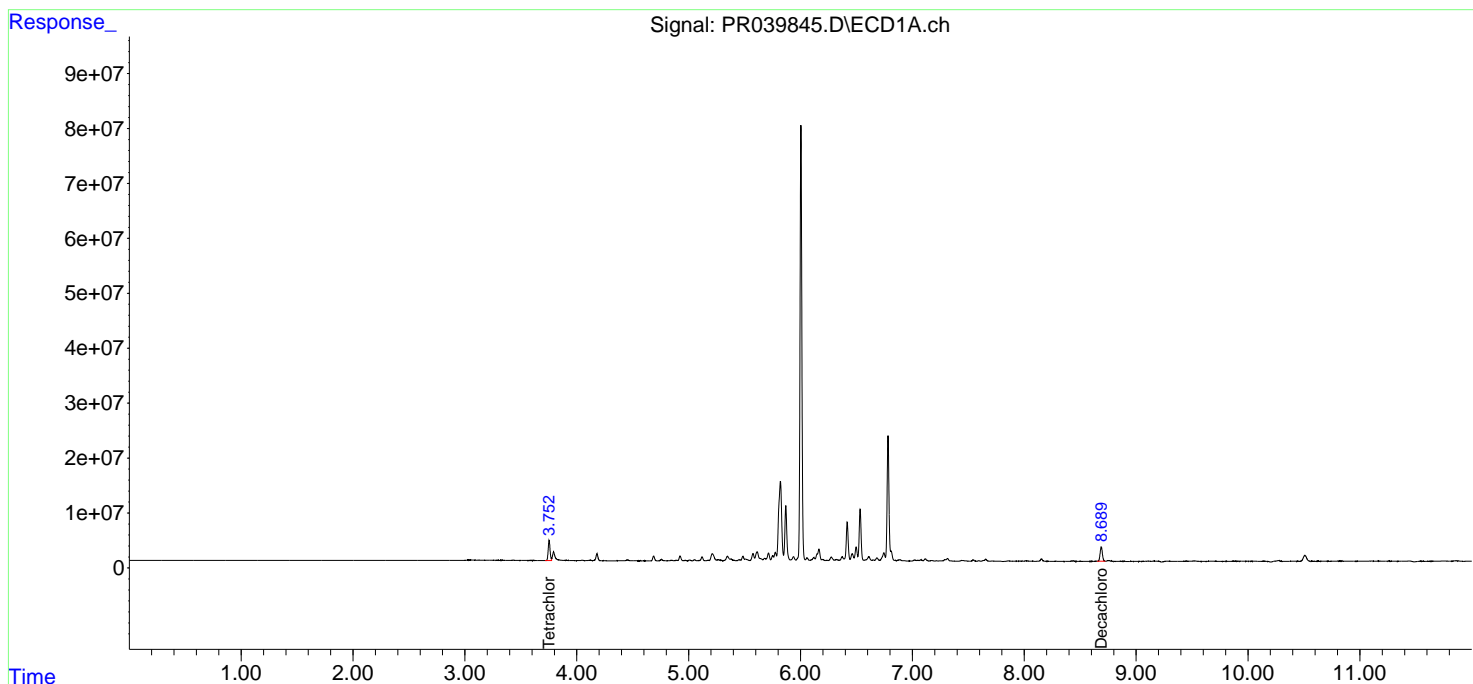
(f)=RT Delta > 1/2 Window (#)=Amounts differ by > 25% (m)=manual int.

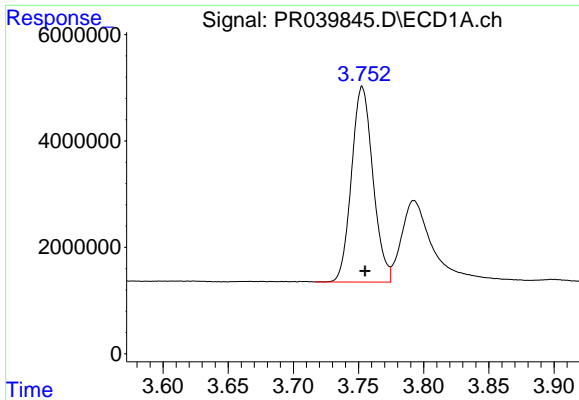
Data Path : Z:\pestpcbsrv\HPCHEM1\ECD_R\Data\PR073019\
 Data File : PR039845.D
 Signal(s) : Signal #1: ECD1A.ch Signal #2: ECD2B.ch
 Acq On : 30 Jul 2019 19:18
 Operator : SM\AJ
 Sample : K4058-02
 Misc :
 ALS Vial : 8 Sample Multiplier: 1

Instrument :
 ECD_R
 ClientSampleId :
 S9-02-A

Integration File signal 1: autoint1.e
 Integration File signal 2: autoint2.e
 Quant Time: Jul 31 08:42:32 2019
 Quant Method : Z:\pestpcbsrv\HPCHEM1\ECD_R\Method\PR072219.M
 Quant Title : GC EXTRACTABLES
 QLast Update : Mon Jul 22 14:03:19 2019
 Response via : Initial Calibration
 Integrator: ChemStation

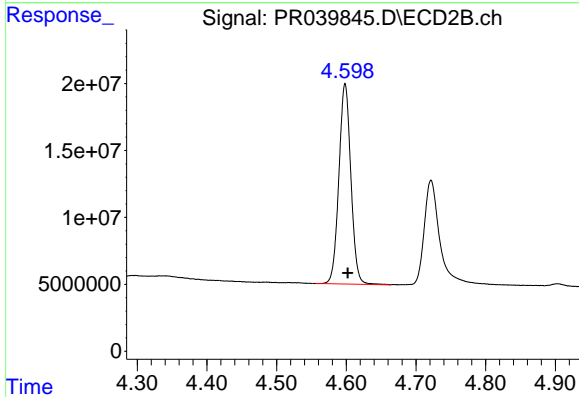
Volume Inj. : 2 µl
 Signal #1 Phase : ZB-MR1 Signal #2 Phase: ZB-MR2
 Signal #1 Info : 30Mx0.32mmx 0.50µ Signal #2 Info : 30M x 0.32mm x 0.25µm



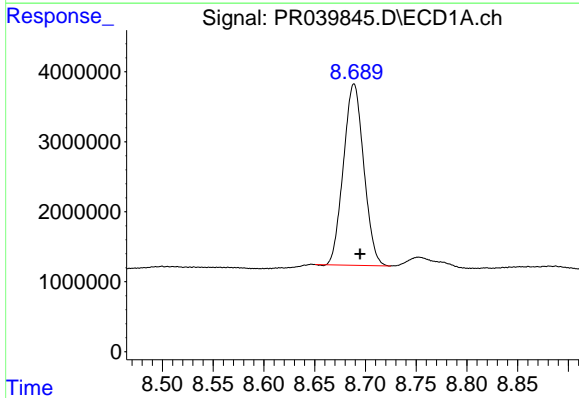


#1 Tetrachloro-m-xylene
 R.T.: 3.753 min
 Delta R.T.: -0.002 min
 Response: 42085913
 Conc: 17.54 ng/ml

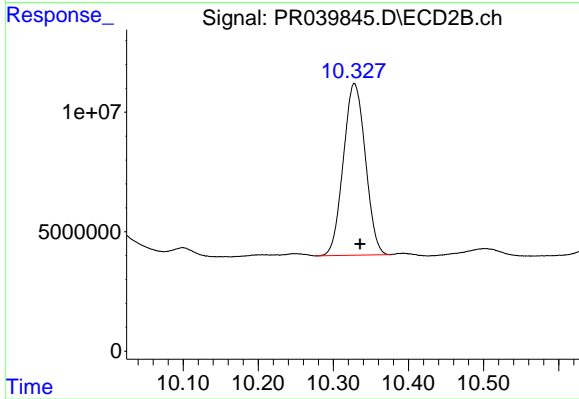
Instrument :
 ECD_R
 ClientSampled :
 S9-02-A



#1 Tetrachloro-m-xylene
 R.T.: 4.598 min
 Delta R.T.: -0.004 min
 Response: 178834779
 Conc: 17.84 ng/ml



#2 Decachlorobiphenyl
 R.T.: 8.689 min
 Delta R.T.: -0.006 min
 Response: 36112355
 Conc: 14.53 ng/ml



#2 Decachlorobiphenyl
 R.T.: 10.328 min
 Delta R.T.: -0.008 min
 Response: 146447812
 Conc: 15.60 ng/ml