

Data Path : Z:\pestpcbsrv\HPCHEM1\ECD\_R\Data\PR073120\  
 Data File : PR046668.D  
 Signal(s) : Signal #1: ECD1A.ch Signal #2: ECD2B.ch  
 Acq On : 31 Jul 2020 16:33  
 Operator : AJ\MA  
 Sample : L3524-02  
 Misc :  
 ALS Vial : 20 Sample Multiplier: 1

Instrument :  
 ECD\_R  
 ClientSampleId :  
 X068-B4

Integration File signal 1: autoint1.e  
 Integration File signal 2: autoint2.e  
 Quant Time: Aug 01 04:16:30 2020  
 Quant Method : Z:\pestpcbsrv\HPCHEM1\ECD\_R\Method\PR072820.M  
 Quant Title : GC EXTRACTABLES  
 QLast Update : Wed Jul 29 03:56:12 2020  
 Response via : Initial Calibration  
 Integrator: ChemStation

Volume Inj. : 2 µl  
 Signal #1 Phase : ZB-MR1 Signal #2 Phase: ZB-MR2  
 Signal #1 Info : 30Mx0.32mmx 0.50µ Signal #2 Info : 30M x 0.32mm x 0.25µm

Compound	RT#1	RT#2	Resp#1	Resp#2	ng/ml	ng/ml
-----						
System Monitoring Compounds						
1) SA Tetrachlo...	4.765	3.993	43085107	277.0E6	27.226	27.687
2) SA Decachlor...	10.764	9.121	37454985	269.5E6	16.904	17.882
Target Compounds						
3) L1 AR-1016-1	5.953	5.090	3470939	22471365	50.931	49.175
4) L1 AR-1016-2	5.977	5.110	5504565	25003351	56.831	39.230 #
5) L1 AR-1016-3	0.000	5.289	0	18327398	N.D.	54.896 #
6) L1 AR-1016-4	6.139	5.328	1996181	493.4E6	41.321	1827.697 #
7) L1 AR-1016-5	6.435	5.545	41258932	267.8E6	832.753	737.950
8) L2 AR-1221-1	0.000	4.191	0	5261131	N.D.	50.261 #
9) L2 AR-1221-2	0.000	4.297	0	5937208	N.D.	72.875 #
12) L3 AR-1232-2	0.000	5.110	0	25003351	N.D.	118.066 #
13) L3 AR-1232-3	5.977	5.289	5504565	18327398	172.257	164.859
14) L3 AR-1232-4	6.139	5.371	1996181	126.1E6	126.404	1230.245 #
15) L3 AR-1232-5	6.225	5.545	72923032	267.8E6	6041.833	2195.773 #
16) L4 AR-1242-1	5.953	5.090	3470939	22471365	81.245	79.120
17) L4 AR-1242-2	5.977	5.110	5504565	25003351	92.107	63.525 #
18) L4 AR-1242-3	0.000	5.289	0	18327398	N.D.	86.300 #
19) L4 AR-1242-4	6.139	5.371	1996181	126.1E6	65.079	599.673 #
20) L4 AR-1242-5	6.883	5.900	47848002	1778.9E6	1230.888	5731.918 #
21) L5 AR-1248-1	5.953	5.090	3470939	22471365	94.594	94.400
22) L5 AR-1248-2	6.225	5.328	72923032	493.4E6	1446.010	1551.918
23) L5 AR-1248-3	6.435	5.371	41258932	126.1E6	706.876	384.469 #
24) L5 AR-1248-4	6.842	5.545	70503568	267.8E6	967.857	629.851 #
25) L5 AR-1248-5	6.883	5.942	47848002	179.7E6	688.121	396.271 #
26) L6 AR-1254-1	6.813	5.900	210.3E6	1778.9E6	2698.061	2375.691
27) L6 AR-1254-2	7.030	6.048	332.8E6	1836.7E6	2669.659	2744.660
28) L6 AR-1254-3	7.405	6.457	317.4E6	3661.4E6	2311.271	3104.385 #
29) L6 AR-1254-4	7.692	6.685	217.3E6	1454.5E6	2051.982	1841.147
30) L6 AR-1254-5	8.113	7.106	495.9E6	3313.4E6	4362.616	3100.797 #
31) L7 AR-1260-1	7.565	6.588	329.2E6	2441.9E6	3345.327	3171.853
32) L7 AR-1260-2	7.822	6.775	423.8E6	2896.6E6	3528.897	2988.897
33) L7 AR-1260-3	8.185	6.932	340.2E6	2435.4E6	3745.950	2734.026 #
34) L7 AR-1260-4	8.429	7.407	375.5E6	2066.2E6	3584.718	2787.558
35) L7 AR-1260-5	8.777	7.647	664.5E6	5243.0E6	2953.572	2781.290
36) L8 AR-1262-1	8.185	7.106	340.2E6	3313.4E6	2759.776	6262.136 #
37) L8 AR-1262-2	8.777	7.647	664.5E6	5243.0E6	2792.895	2557.988
38) L8 AR-1262-3	9.111	7.934	245.6E6	1800.7E6	2369.677	2215.656
39) L8 AR-1262-4	9.212	7.999	297.3E6	3564.6E6	2429.022	2463.716
40) L8 AR-1262-5	9.940	8.519	239.9E6	1796.0E6	2607.537	2642.901
41) L9 AR-1268-1	9.111	7.934	245.6E6	1800.7E6	846.307	770.351
42) L9 AR-1268-2	9.212	7.999	297.3E6	3564.6E6	1099.123	1612.112 #
43) L9 AR-1268-3	9.461	8.214	12959950	101.3E6	57.177	55.885

Data Path : Z:\pestpcbsrv\HPCHEM1\ECD\_R\Data\PR073120\  
 Data File : PR046668.D  
 Signal(s) : Signal #1: ECD1A.ch Signal #2: ECD2B.ch  
 Acq On : 31 Jul 2020 16:33  
 Operator : AJ\MA  
 Sample : L3524-02  
 Misc :  
 ALS Vial : 20 Sample Multiplier: 1

Instrument :  
 ECD\_R  
 ClientSampleId :  
 X068-B4

Integration File signal 1: autoint1.e  
 Integration File signal 2: autoint2.e  
 Quant Time: Aug 01 04:16:30 2020  
 Quant Method : Z:\pestpcbsrv\HPCHEM1\ECD\_R\Method\PR072820.M  
 Quant Title : GC EXTRACTABLES  
 QLast Update : Wed Jul 29 03:56:12 2020  
 Response via : Initial Calibration  
 Integrator: ChemStation

Volume Inj. : 2 µl  
 Signal #1 Phase : ZB-MR1 Signal #2 Phase: ZB-MR2  
 Signal #1 Info : 30Mx0.32mmx 0.50µ Signal #2 Info : 30M x 0.32mm x 0.25µm

	Compound	RT#1	RT#2	Resp#1	Resp#2	ng/ml	ng/ml
44)	L9 AR-1268-4	9.940	8.519	239.9E6	1796.0E6	2302.440	2339.152
45)	L9 AR-1268-5	10.393	8.838	72213640	513.0E6	89.617	92.458

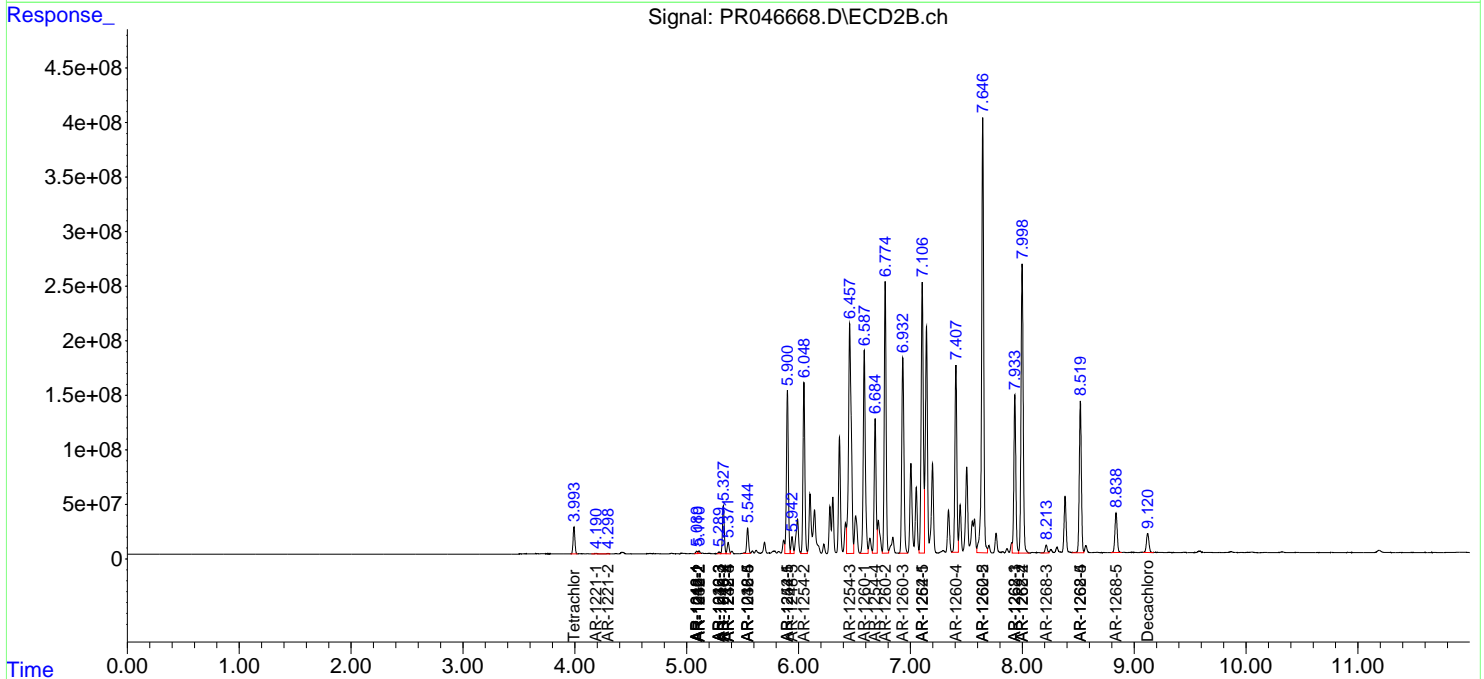
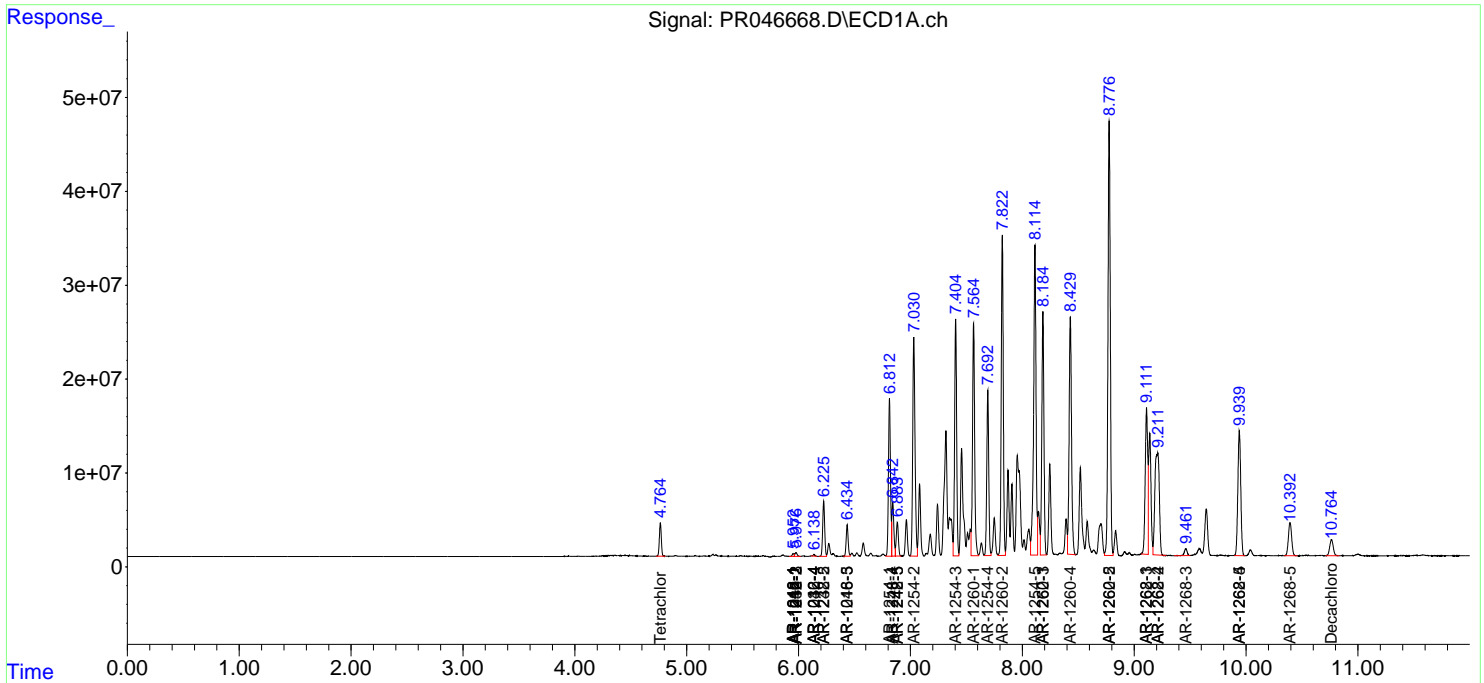
(f)=RT Delta > 1/2 Window (#)=Amounts differ by > 25% (m)=manual int.

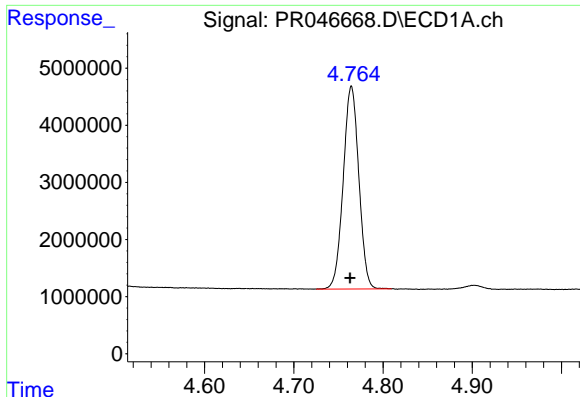
Data Path : Z:\pestpcbsrv\HPCHEM1\ECD\_R\Data\PR073120\  
 Data File : PR046668.D  
 Signal(s) : Signal #1: ECD1A.ch Signal #2: ECD2B.ch  
 Acq On : 31 Jul 2020 16:33  
 Operator : AJ\MA  
 Sample : L3524-02  
 Misc :  
 ALS Vial : 20 Sample Multiplier: 1

Instrument :  
 ECD\_R  
 ClientSampled :  
 X068-B4

Integration File signal 1: autoint1.e  
 Integration File signal 2: autoint2.e  
 Quant Time: Aug 01 04:16:30 2020  
 Quant Method : Z:\pestpcbsrv\HPCHEM1\ECD\_R\Method\PR072820.M  
 Quant Title : GC EXTRACTABLES  
 QLast Update : Wed Jul 29 03:56:12 2020  
 Response via : Initial Calibration  
 Integrator: ChemStation

Volume Inj. : 2 µl  
 Signal #1 Phase : ZB-MR1 Signal #2 Phase: ZB-MR2  
 Signal #1 Info : 30Mx0.32mmx 0.50µ Signal #2 Info : 30M x 0.32mm x 0.25µm

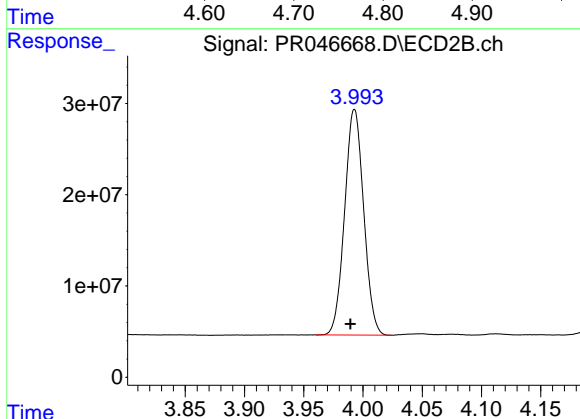




#1 Tetrachloro-m-xylene

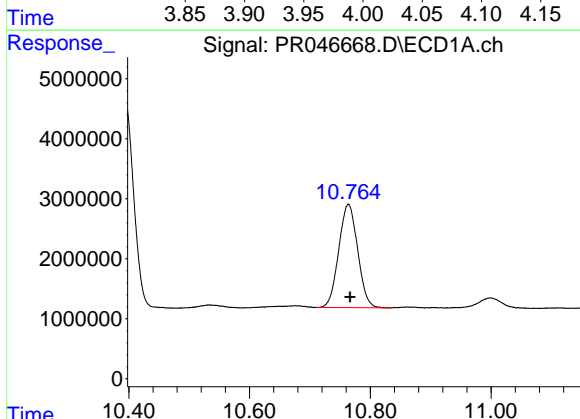
R.T.: 4.765 min  
 Delta R.T.: 0.002 min  
 Response: 43085107  
 Conc: 27.23 ng/ml

Instrument :  
 ECD\_R  
 ClientSampleId :  
 X068-B4



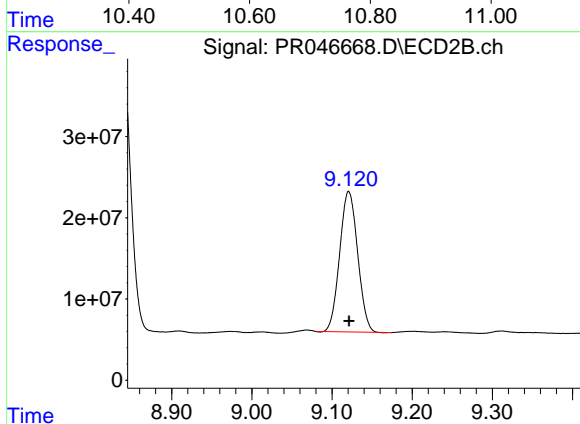
#1 Tetrachloro-m-xylene

R.T.: 3.993 min  
 Delta R.T.: 0.003 min  
 Response: 277006579  
 Conc: 27.69 ng/ml



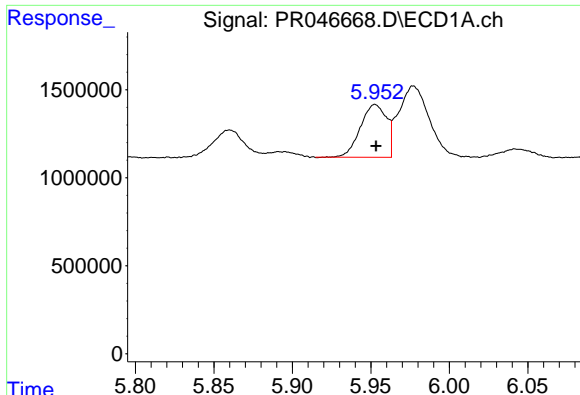
#2 Decachlorobiphenyl

R.T.: 10.764 min  
 Delta R.T.: -0.003 min  
 Response: 37454985  
 Conc: 16.90 ng/ml



#2 Decachlorobiphenyl

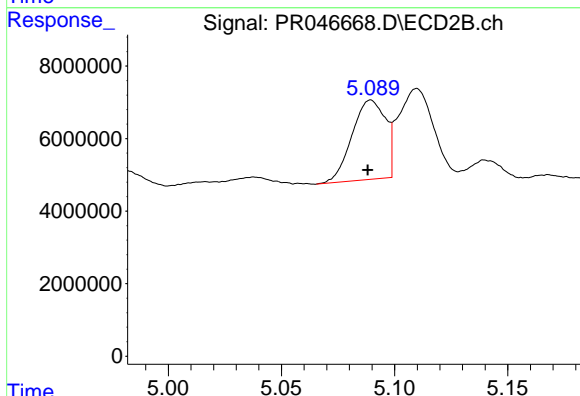
R.T.: 9.121 min  
 Delta R.T.: 0.000 min  
 Response: 269535658  
 Conc: 17.88 ng/ml



#3 AR-1016-1

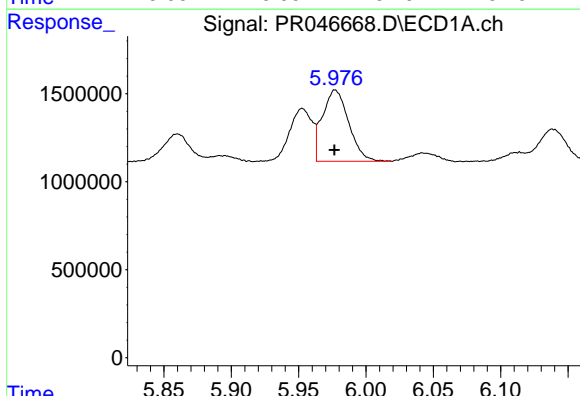
R.T.: 5.953 min  
 Delta R.T.: 0.000 min  
 Response: 3470939  
 Conc: 50.93 ng/ml

Instrument :  
 ECD\_R  
 ClientSampled :  
 X068-B4



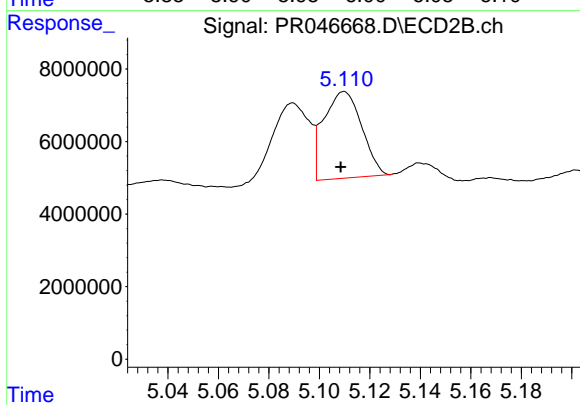
#3 AR-1016-1

R.T.: 5.090 min  
 Delta R.T.: 0.001 min  
 Response: 22471365  
 Conc: 49.17 ng/ml



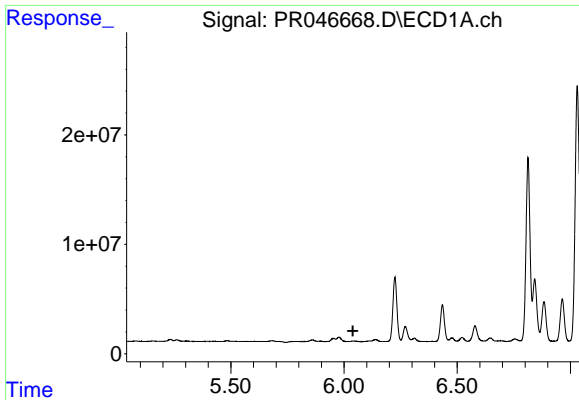
#4 AR-1016-2

R.T.: 5.977 min  
 Delta R.T.: 0.000 min  
 Response: 5504565  
 Conc: 56.83 ng/ml



#4 AR-1016-2

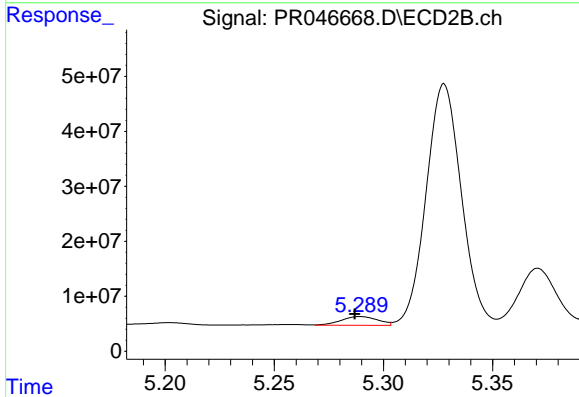
R.T.: 5.110 min  
 Delta R.T.: 0.001 min  
 Response: 25003351  
 Conc: 39.23 ng/ml



#5 AR-1016-3

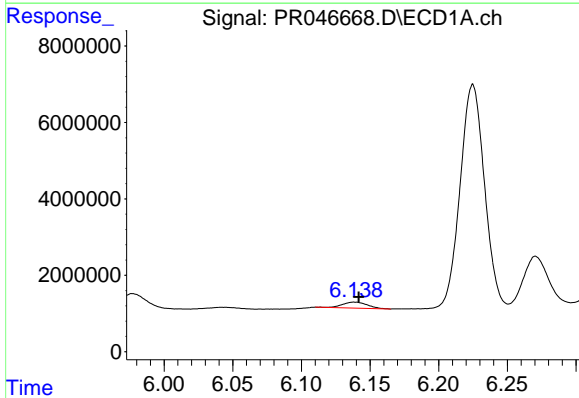
R.T.: 0.000 min  
 Exp R.T.: 6.039 min  
 Response: 0  
 Conc: N.D.

Instrument :  
 ECD\_R  
 ClientSampleId :  
 X068-B4



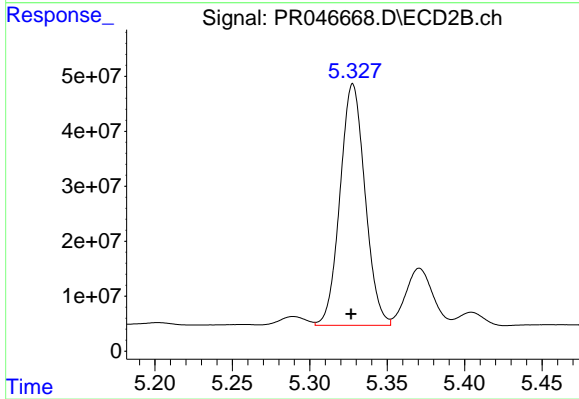
#5 AR-1016-3

R.T.: 5.289 min  
 Delta R.T.: 0.003 min  
 Response: 18327398  
 Conc: 54.90 ng/ml



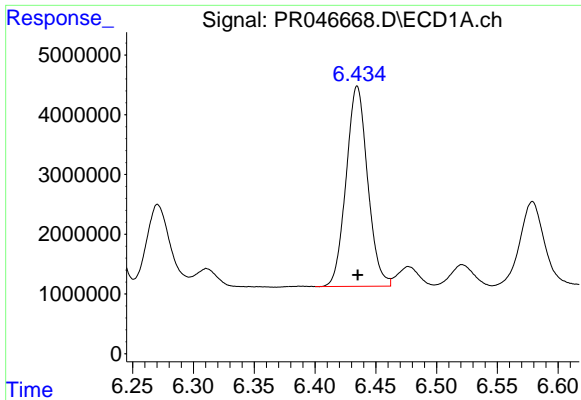
#6 AR-1016-4

R.T.: 6.139 min  
 Delta R.T.: -0.003 min  
 Response: 1996181  
 Conc: 41.32 ng/ml



#6 AR-1016-4

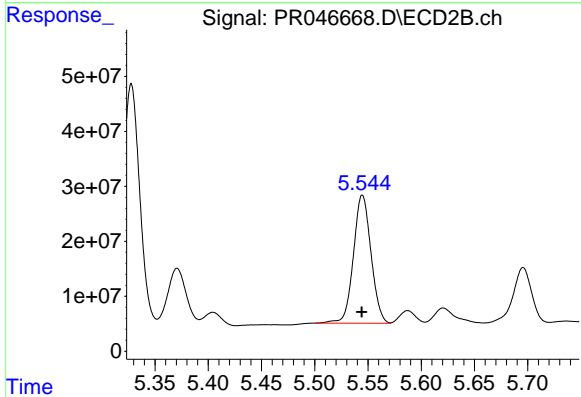
R.T.: 5.328 min  
 Delta R.T.: 0.001 min  
 Response: 493413517  
 Conc: 1827.70 ng/ml



#7 AR-1016-5

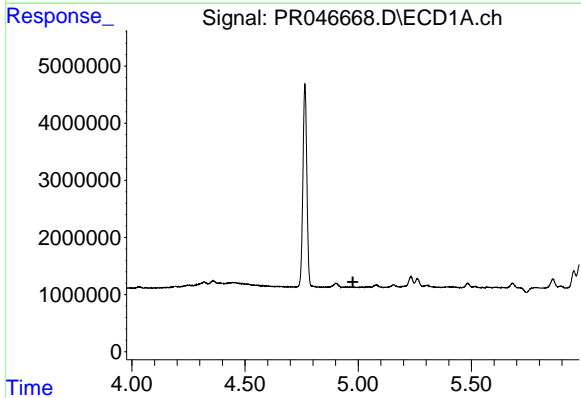
R.T.: 6.435 min  
 Delta R.T.: 0.000 min  
 Response: 41258932  
 Conc: 832.75 ng/ml

Instrument :  
 ECD\_R  
 ClientSampled :  
 X068-B4



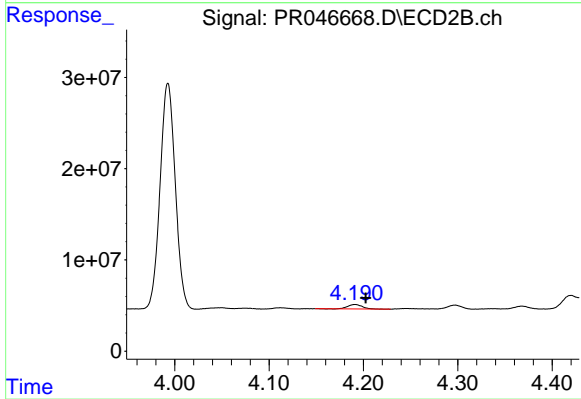
#7 AR-1016-5

R.T.: 5.545 min  
 Delta R.T.: 0.000 min  
 Response: 267764086  
 Conc: 737.95 ng/ml



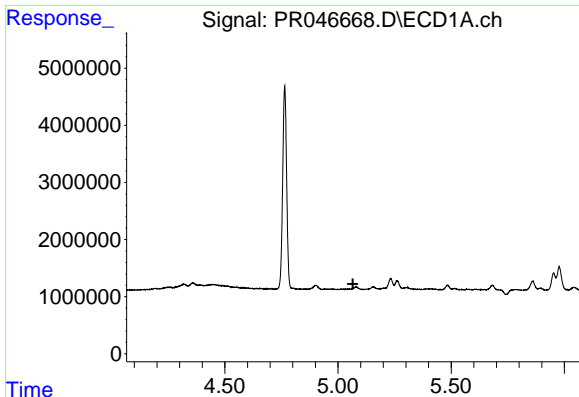
#8 AR-1221-1

R.T.: 0.000 min  
 Exp R.T. : 4.977 min  
 Response: 0  
 Conc: N.D.



#8 AR-1221-1

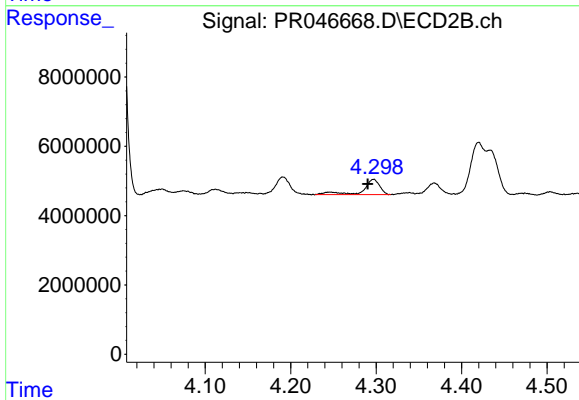
R.T.: 4.191 min  
 Delta R.T.: -0.011 min  
 Response: 5261131  
 Conc: 50.26 ng/ml



#9 AR-1221-2

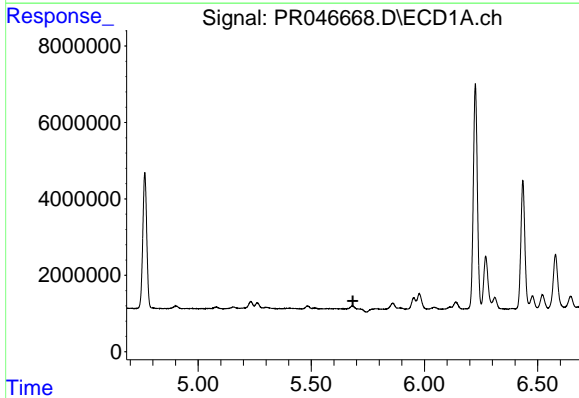
R.T.: 0.000 min  
 Exp R.T. : 5.066 min  
 Response: 0  
 Conc: N.D.

Instrument :  
 ECD\_R  
 ClientSampleId :  
 X068-B4



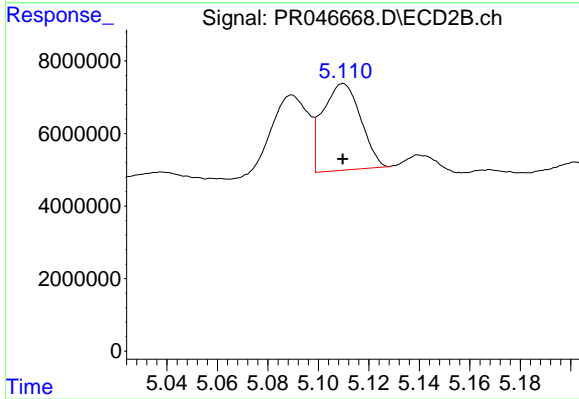
#9 AR-1221-2

R.T.: 4.297 min  
 Delta R.T.: 0.007 min  
 Response: 5937208  
 Conc: 72.88 ng/ml



#12 AR-1232-2

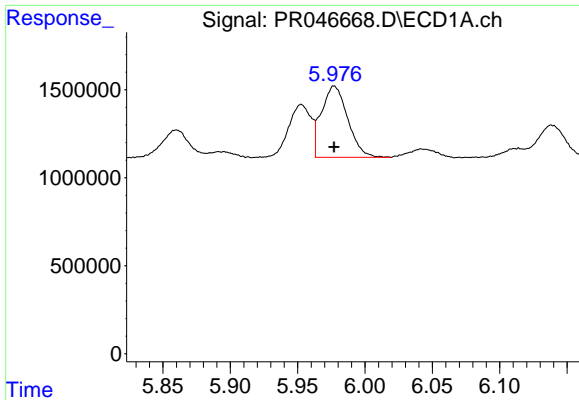
R.T.: 0.000 min  
 Exp R.T. : 5.684 min  
 Response: 0  
 Conc: N.D.



#12 AR-1232-2

R.T.: 5.110 min  
 Delta R.T.: 0.000 min  
 Response: 25003351  
 Conc: 118.07 ng/ml

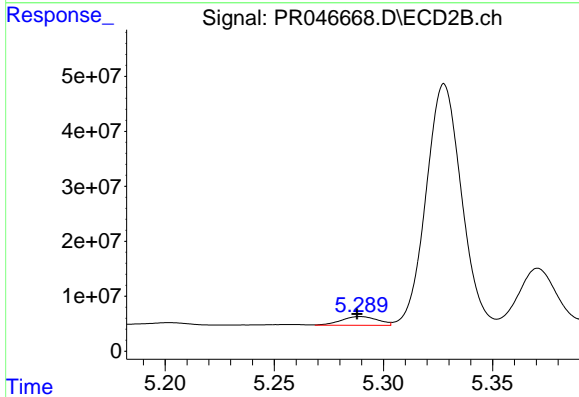




#13 AR-1232-3

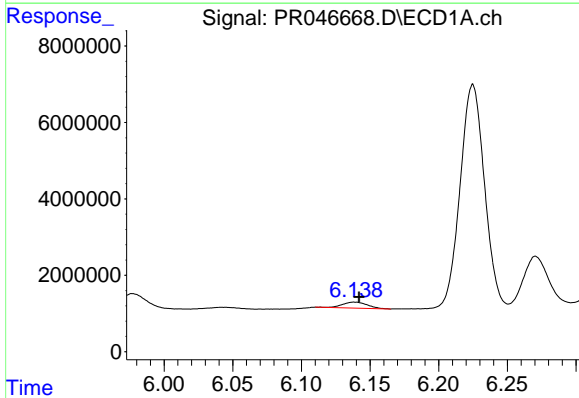
R.T.: 5.977 min  
 Delta R.T.: 0.000 min  
 Response: 5504565  
 Conc: 172.26 ng/ml

Instrument :  
 ECD\_R  
 ClientSampled :  
 X068-B4



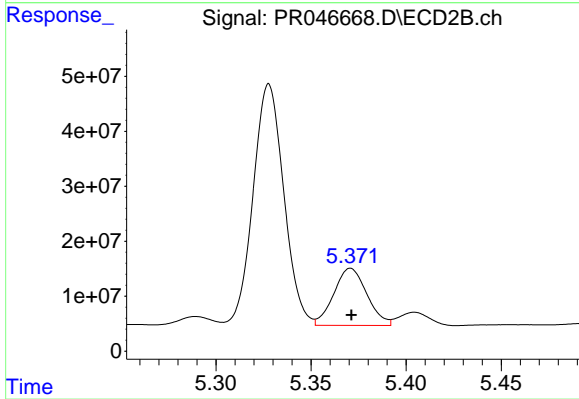
#13 AR-1232-3

R.T.: 5.289 min  
 Delta R.T.: 0.002 min  
 Response: 18327398  
 Conc: 164.86 ng/ml



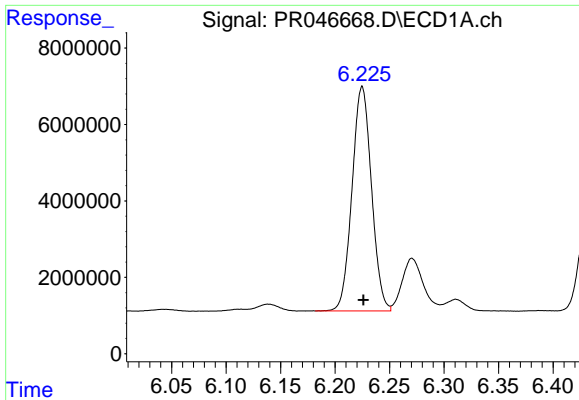
#14 AR-1232-4

R.T.: 6.139 min  
 Delta R.T.: -0.003 min  
 Response: 1996181  
 Conc: 126.40 ng/ml



#14 AR-1232-4

R.T.: 5.371 min  
 Delta R.T.: 0.000 min  
 Response: 126138978  
 Conc: 1230.25 ng/ml

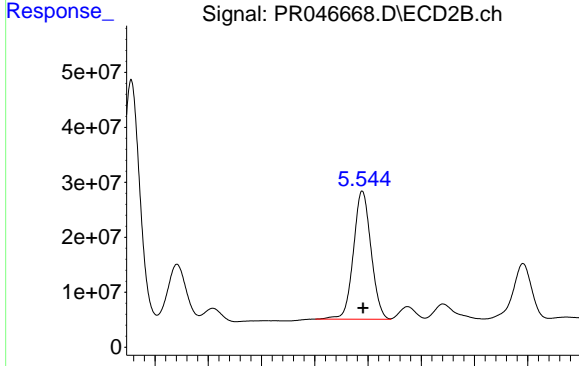


#15 AR-1232-5

R.T.: 6.225 min  
 Delta R.T.: -0.001 min  
 Response: 72923032  
 Conc: 6041.83 ng/ml

Instrument :  
 ECD\_R  
 ClientSampleId :  
 X068-B4

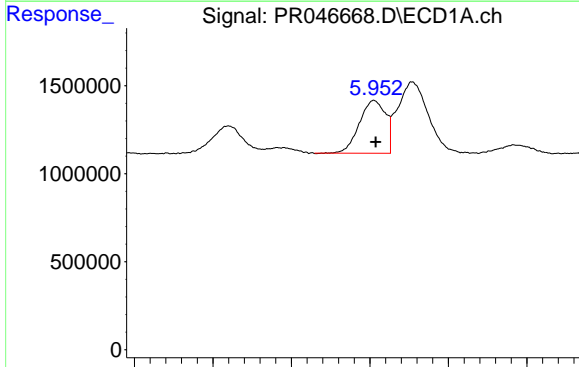
Time 6.05 6.10 6.15 6.20 6.25 6.30 6.35 6.40



#15 AR-1232-5

R.T.: 5.545 min  
 Delta R.T.: 0.000 min  
 Response: 267764086  
 Conc: 2195.77 ng/ml

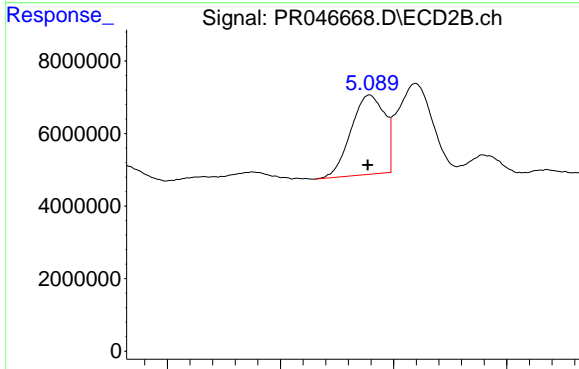
Time 5.35 5.40 5.45 5.50 5.55 5.60 5.65 5.70



#16 AR-1242-1

R.T.: 5.953 min  
 Delta R.T.: 0.000 min  
 Response: 3470939  
 Conc: 81.25 ng/ml

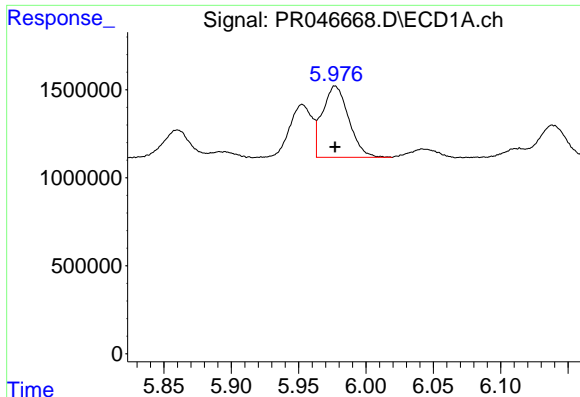
Time 5.80 5.85 5.90 5.95 6.00 6.05



#16 AR-1242-1

R.T.: 5.090 min  
 Delta R.T.: 0.001 min  
 Response: 22471365  
 Conc: 79.12 ng/ml

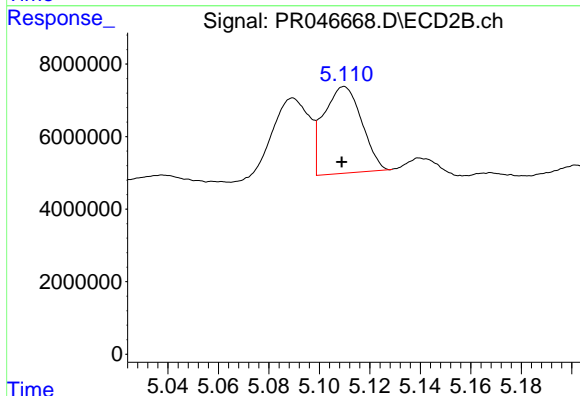
Time 5.00 5.05 5.10 5.15



#17 AR-1242-2

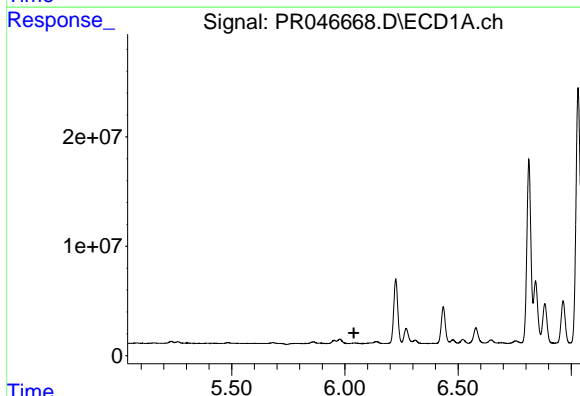
R.T.: 5.977 min  
 Delta R.T.: 0.000 min  
 Response: 5504565  
 Conc: 92.11 ng/ml

Instrument :  
 ECD\_R  
 ClientSampleId :  
 X068-B4



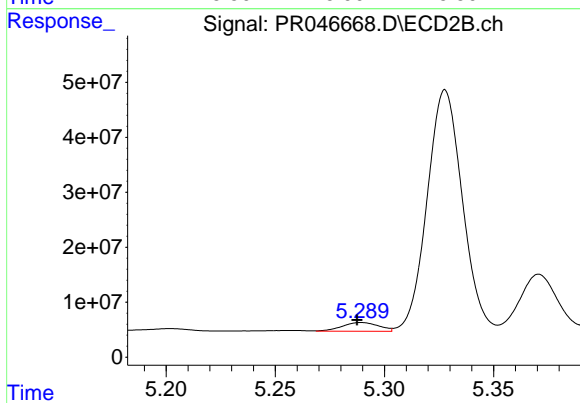
#17 AR-1242-2

R.T.: 5.110 min  
 Delta R.T.: 0.000 min  
 Response: 25003351  
 Conc: 63.52 ng/ml



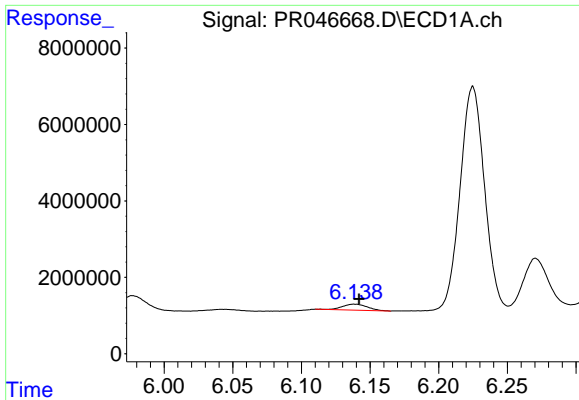
#18 AR-1242-3

R.T.: 0.000 min  
 Exp R.T. : 6.040 min  
 Response: 0  
 Conc: N.D.



#18 AR-1242-3

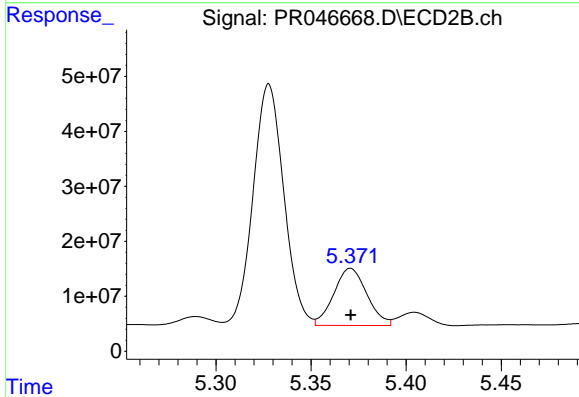
R.T.: 5.289 min  
 Delta R.T.: 0.002 min  
 Response: 18327398  
 Conc: 86.30 ng/ml



#19 AR-1242-4

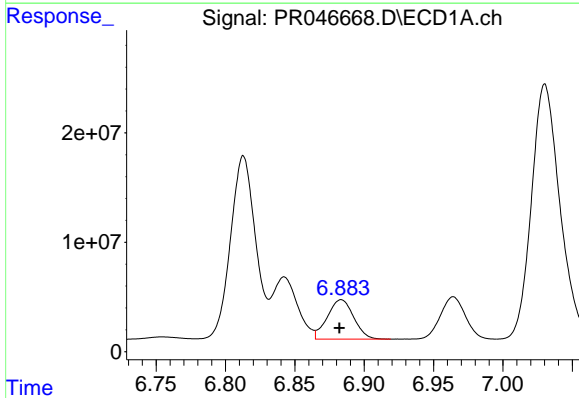
R.T.: 6.139 min  
 Delta R.T.: -0.003 min  
 Response: 1996181  
 Conc: 65.08 ng/ml

Instrument :  
 ECD\_R  
 ClientSampled :  
 X068-B4



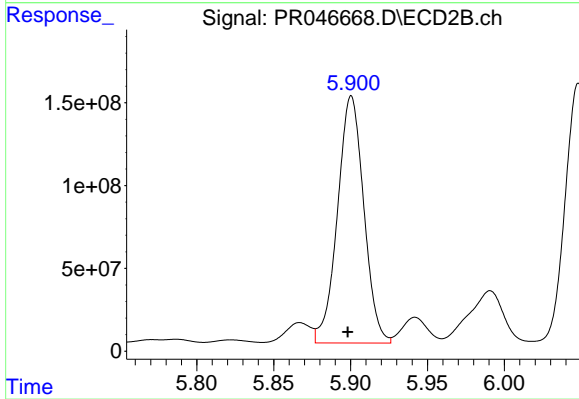
#19 AR-1242-4

R.T.: 5.371 min  
 Delta R.T.: 0.000 min  
 Response: 126138978  
 Conc: 599.67 ng/ml



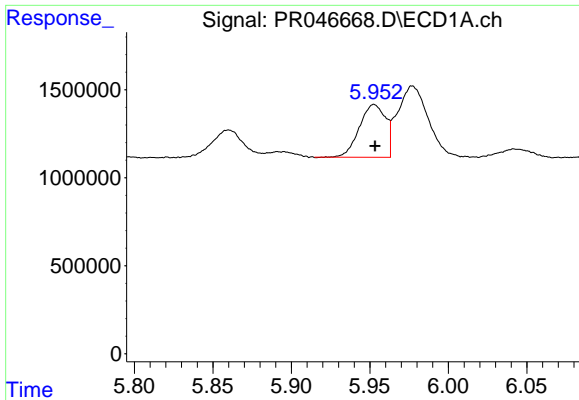
#20 AR-1242-5

R.T.: 6.883 min  
 Delta R.T.: 0.001 min  
 Response: 47848002  
 Conc: 1230.89 ng/ml



#20 AR-1242-5

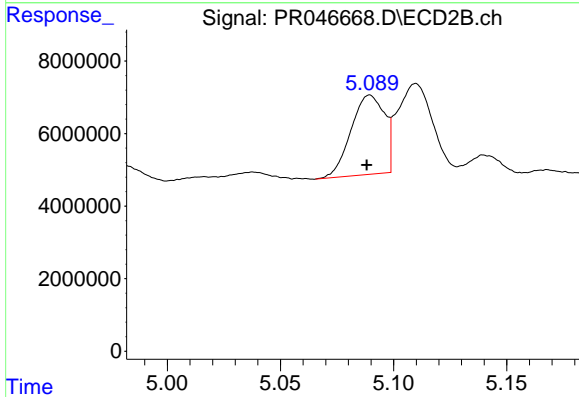
R.T.: 5.900 min  
 Delta R.T.: 0.002 min  
 Response: 1778931837  
 Conc: 5731.92 ng/ml



#21 AR-1248-1

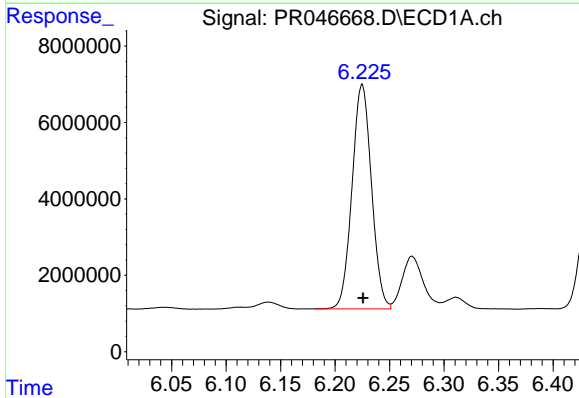
R.T.: 5.953 min  
 Delta R.T.: 0.000 min  
 Response: 3470939  
 Conc: 94.59 ng/ml

Instrument :  
 ECD\_R  
 ClientSampleId :  
 X068-B4



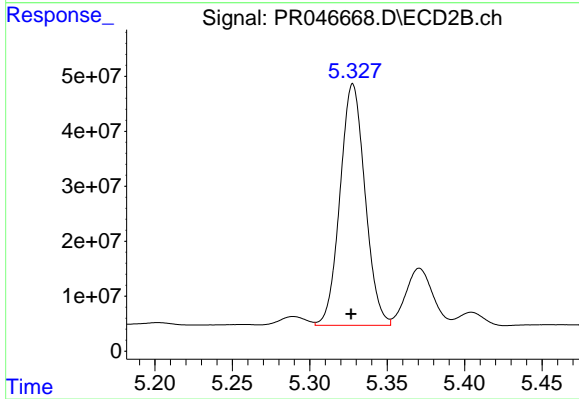
#21 AR-1248-1

R.T.: 5.090 min  
 Delta R.T.: 0.001 min  
 Response: 22471365  
 Conc: 94.40 ng/ml



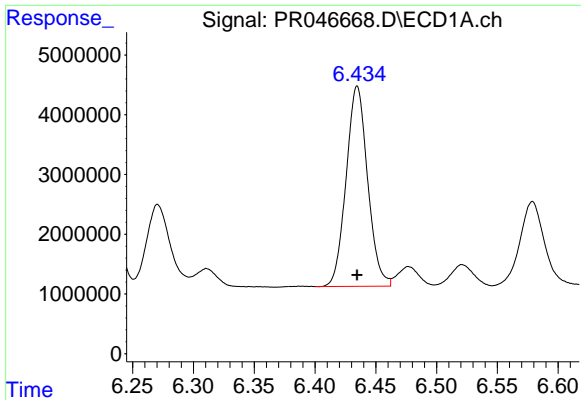
#22 AR-1248-2

R.T.: 6.225 min  
 Delta R.T.: 0.000 min  
 Response: 72923032  
 Conc: 1446.01 ng/ml



#22 AR-1248-2

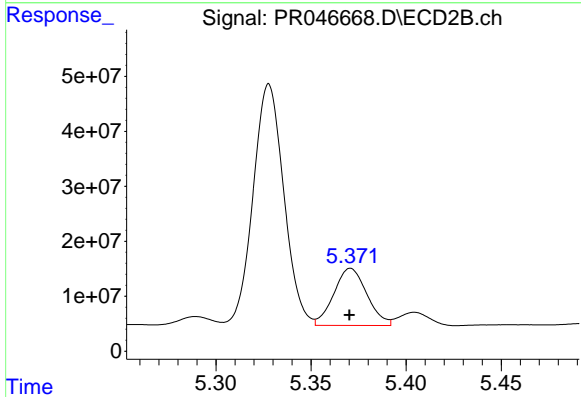
R.T.: 5.328 min  
 Delta R.T.: 0.001 min  
 Response: 493413517  
 Conc: 1551.92 ng/ml



#23 AR-1248-3

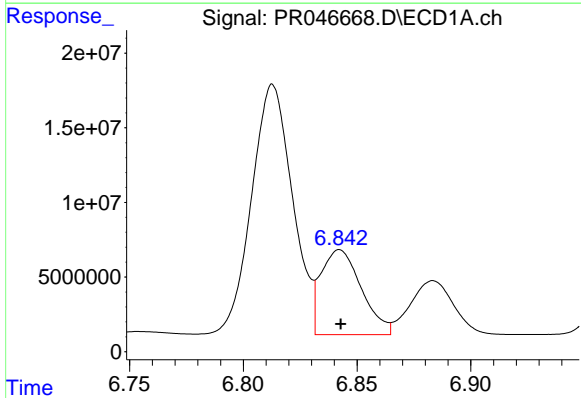
R.T.: 6.435 min  
 Delta R.T.: 0.000 min  
 Response: 41258932  
 Conc: 706.88 ng/ml

Instrument :  
 ECD\_R  
 ClientSampled :  
 X068-B4



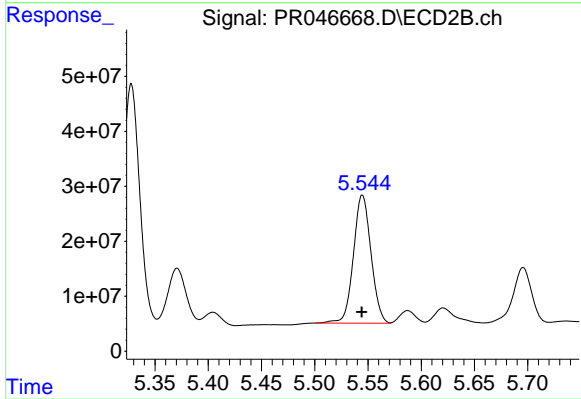
#23 AR-1248-3

R.T.: 5.371 min  
 Delta R.T.: 0.000 min  
 Response: 126138978  
 Conc: 384.47 ng/ml



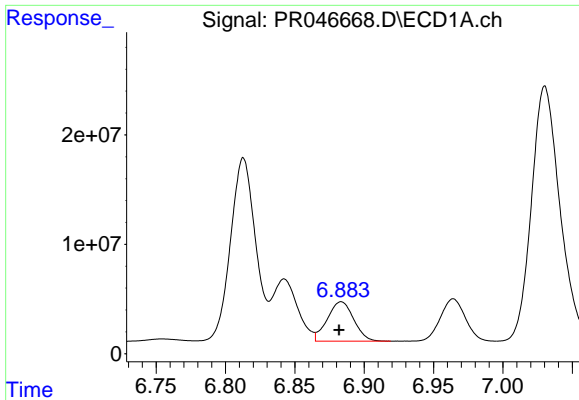
#24 AR-1248-4

R.T.: 6.842 min  
 Delta R.T.: 0.000 min  
 Response: 70503568  
 Conc: 967.86 ng/ml



#24 AR-1248-4

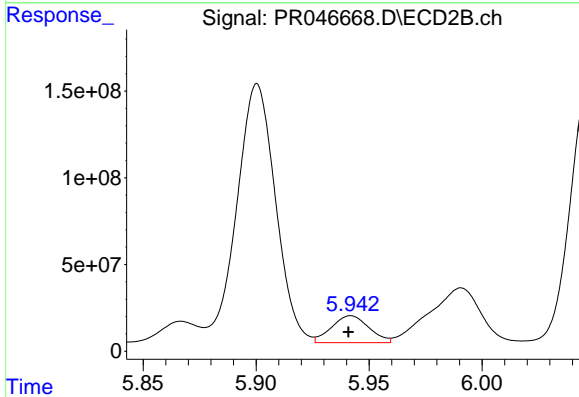
R.T.: 5.545 min  
 Delta R.T.: 0.000 min  
 Response: 267764086  
 Conc: 629.85 ng/ml



#25 AR-1248-5

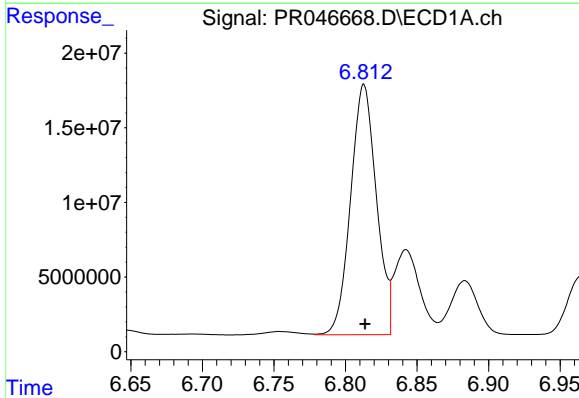
R.T.: 6.883 min  
 Delta R.T.: 0.002 min  
 Response: 47848002  
 Conc: 688.12 ng/ml

Instrument :  
 ECD\_R  
 ClientSampled :  
 X068-B4



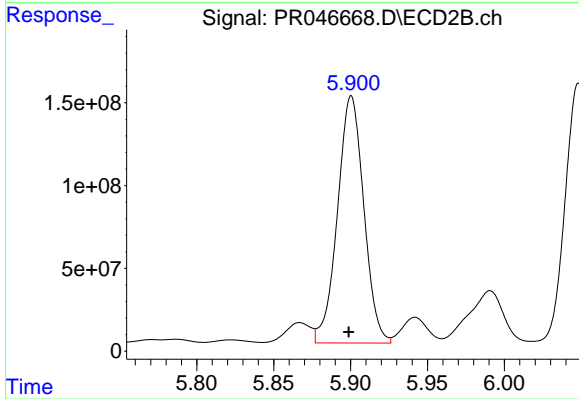
#25 AR-1248-5

R.T.: 5.942 min  
 Delta R.T.: 0.001 min  
 Response: 179720512  
 Conc: 396.27 ng/ml



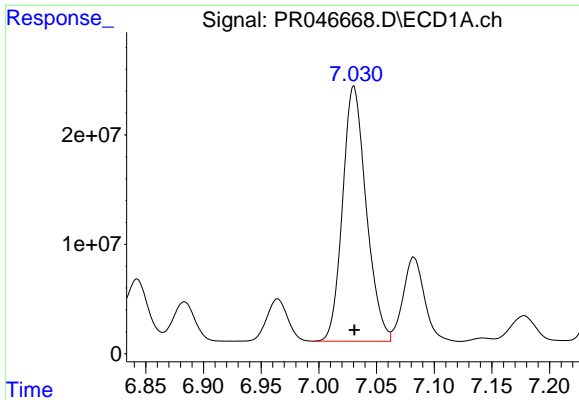
#26 AR-1254-1

R.T.: 6.813 min  
 Delta R.T.: 0.000 min  
 Response: 210300686  
 Conc: 2698.06 ng/ml



#26 AR-1254-1

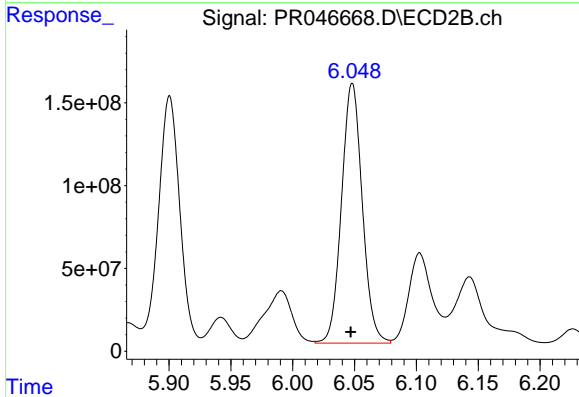
R.T.: 5.900 min  
 Delta R.T.: 0.002 min  
 Response: 1778931837  
 Conc: 2375.69 ng/ml



#27 AR-1254-2

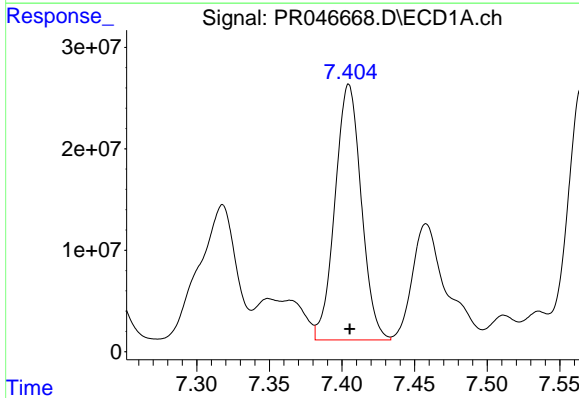
R.T.: 7.030 min  
 Delta R.T.: 0.000 min  
 Response: 332788250  
 Conc: 2669.66 ng/ml

Instrument :  
 ECD\_R  
 ClientSampleId :  
 X068-B4



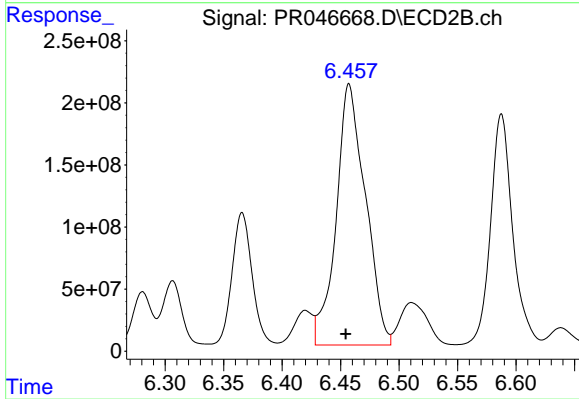
#27 AR-1254-2

R.T.: 6.048 min  
 Delta R.T.: 0.001 min  
 Response: 1836738198  
 Conc: 2744.66 ng/ml



#28 AR-1254-3

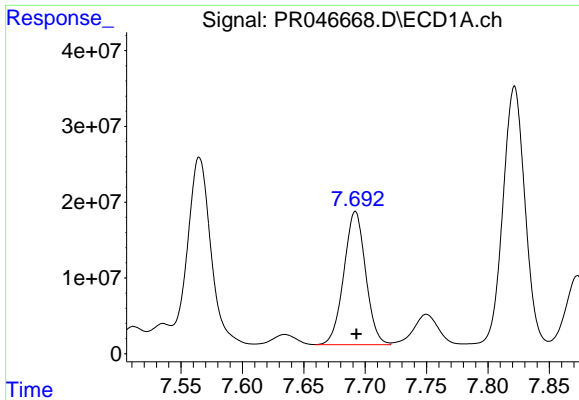
R.T.: 7.405 min  
 Delta R.T.: 0.000 min  
 Response: 317419837  
 Conc: 2311.27 ng/ml



#28 AR-1254-3

R.T.: 6.457 min  
 Delta R.T.: 0.003 min  
 Response: 3661446461  
 Conc: 3104.38 ng/ml

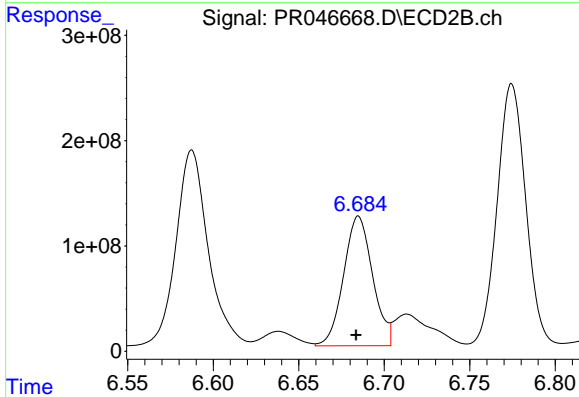




#29 AR-1254-4

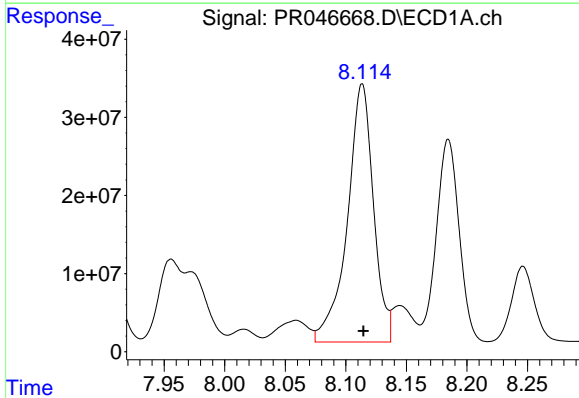
R.T.: 7.692 min  
 Delta R.T.: 0.000 min  
 Response: 217264472  
 Conc: 2051.98 ng/ml

Instrument :  
 ECD\_R  
 ClientSampled :  
 X068-B4



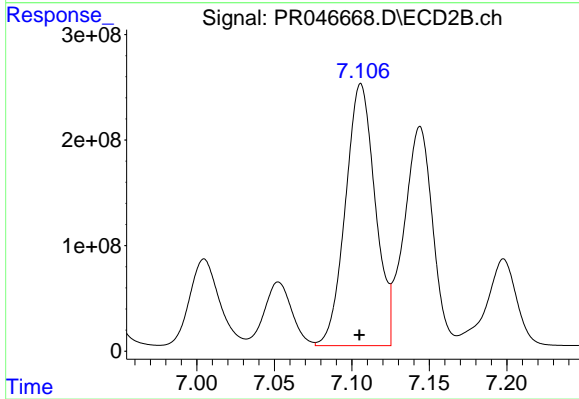
#29 AR-1254-4

R.T.: 6.685 min  
 Delta R.T.: 0.002 min  
 Response: 1454458601  
 Conc: 1841.15 ng/ml



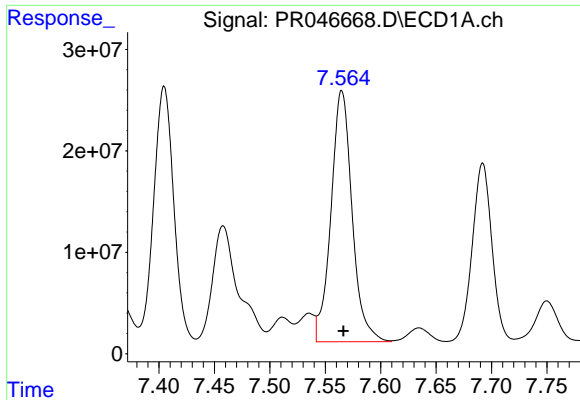
#30 AR-1254-5

R.T.: 8.113 min  
 Delta R.T.: -0.001 min  
 Response: 495947277  
 Conc: 4362.62 ng/ml



#30 AR-1254-5

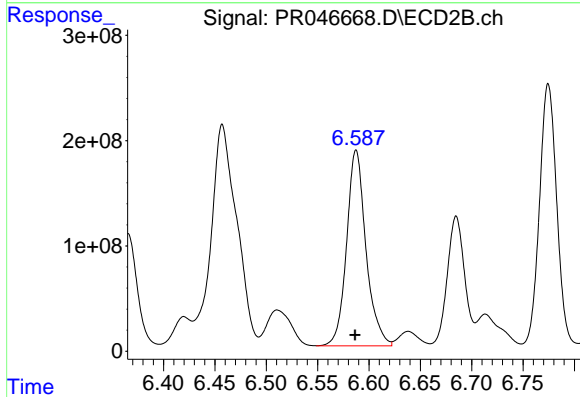
R.T.: 7.106 min  
 Delta R.T.: 0.001 min  
 Response: 3313442834  
 Conc: 3100.80 ng/ml



#31 AR-1260-1

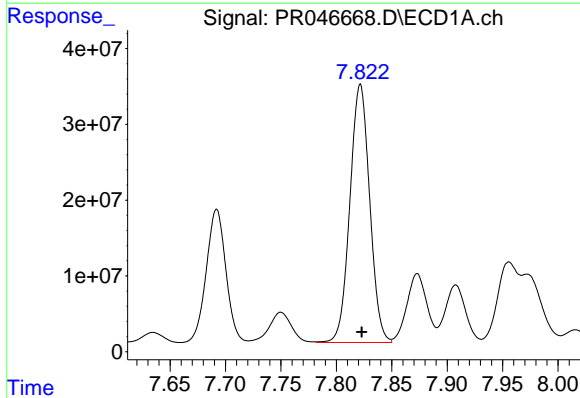
R.T.: 7.565 min  
 Delta R.T.: -0.001 min  
 Response: 329155312  
 Conc: 3345.33 ng/ml

Instrument :  
 ECD\_R  
 ClientSampleId :  
 X068-B4



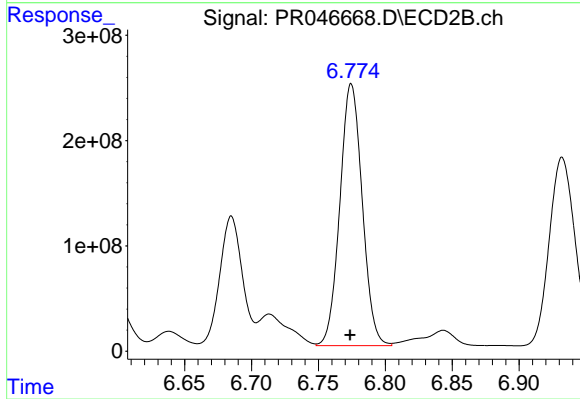
#31 AR-1260-1

R.T.: 6.588 min  
 Delta R.T.: 0.001 min  
 Response: 2441920163  
 Conc: 3171.85 ng/ml



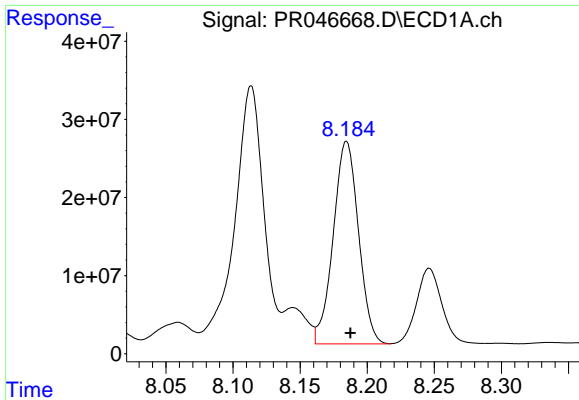
#32 AR-1260-2

R.T.: 7.822 min  
 Delta R.T.: -0.001 min  
 Response: 423774179  
 Conc: 3528.90 ng/ml



#32 AR-1260-2

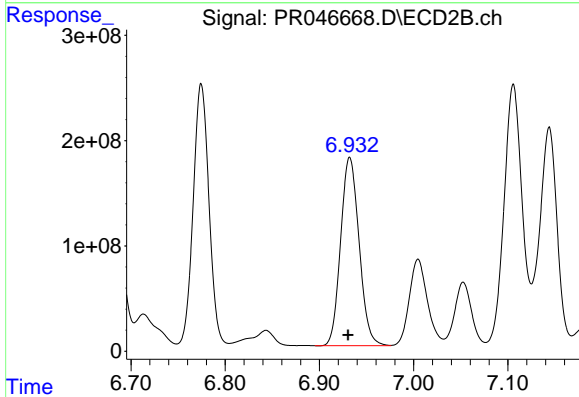
R.T.: 6.775 min  
 Delta R.T.: 0.000 min  
 Response: 2896642094  
 Conc: 2988.90 ng/ml



#33 AR-1260-3

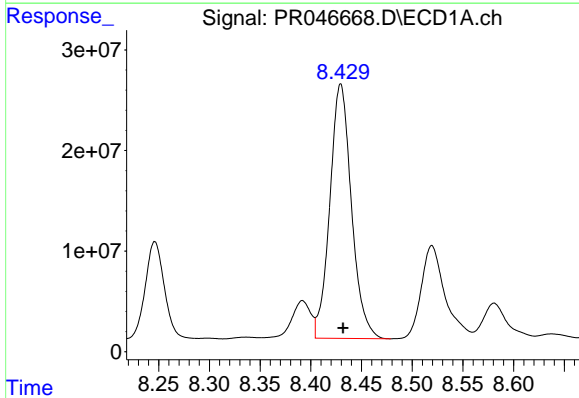
R.T.: 8.185 min  
 Delta R.T.: -0.003 min  
 Response: 340172468  
 Conc: 3745.95 ng/ml

Instrument :  
 ECD\_R  
 ClientSampled :  
 X068-B4



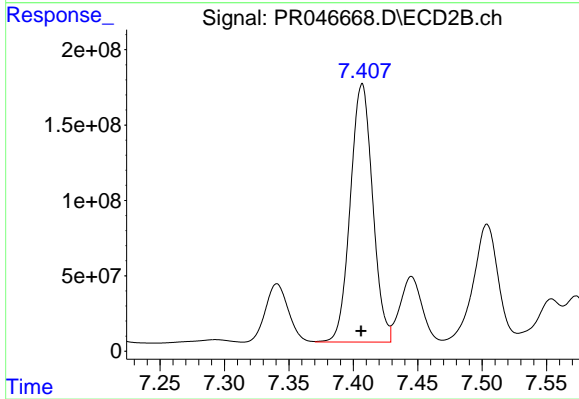
#33 AR-1260-3

R.T.: 6.932 min  
 Delta R.T.: 0.002 min  
 Response: 2435430633  
 Conc: 2734.03 ng/ml



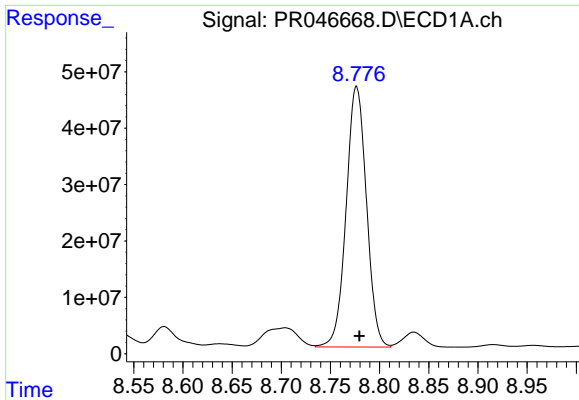
#34 AR-1260-4

R.T.: 8.429 min  
 Delta R.T.: -0.002 min  
 Response: 375507975  
 Conc: 3584.72 ng/ml



#34 AR-1260-4

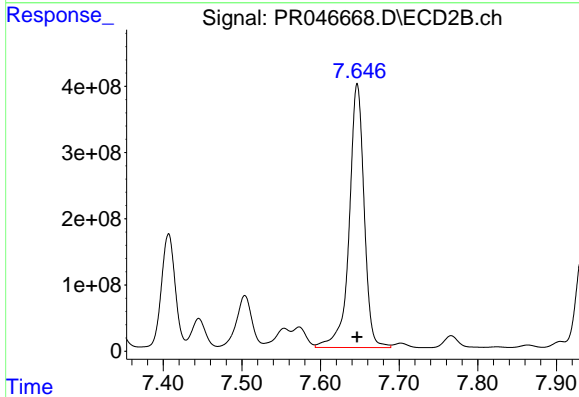
R.T.: 7.407 min  
 Delta R.T.: 0.000 min  
 Response: 2066206271  
 Conc: 2787.56 ng/ml



#35 AR-1260-5

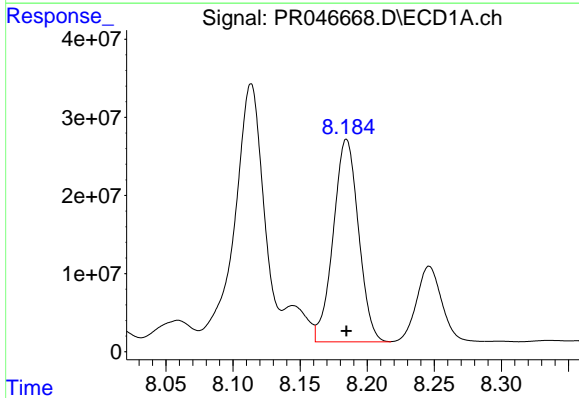
R.T.: 8.777 min  
Delta R.T.: -0.003 min  
Response: 664511586  
Conc: 2953.57 ng/ml

Instrument :  
ECD\_R  
ClientSampleId :  
X068-B4



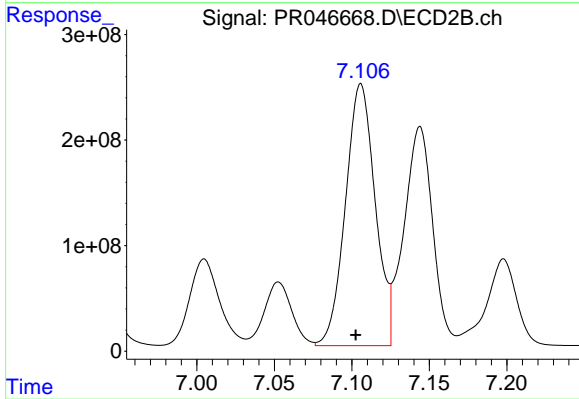
#35 AR-1260-5

R.T.: 7.647 min  
Delta R.T.: 0.000 min  
Response: 5243048117  
Conc: 2781.29 ng/ml



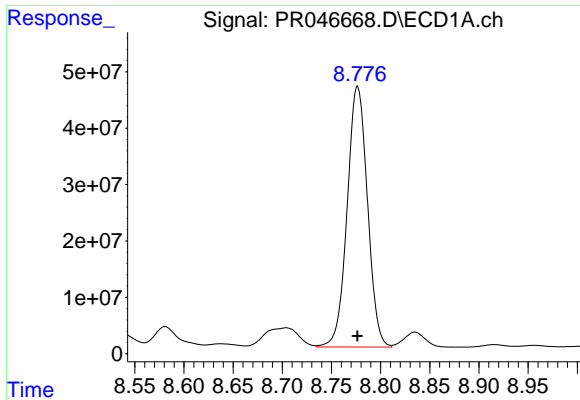
#36 AR-1262-1

R.T.: 8.185 min  
Delta R.T.: 0.000 min  
Response: 340172468  
Conc: 2759.78 ng/ml



#36 AR-1262-1

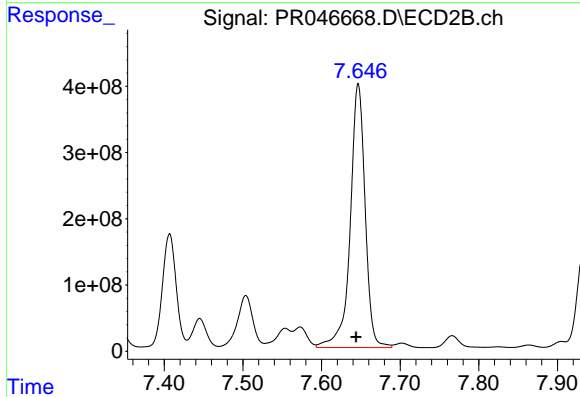
R.T.: 7.106 min  
Delta R.T.: 0.003 min  
Response: 3313442834  
Conc: 6262.14 ng/ml



#37 AR-1262-2

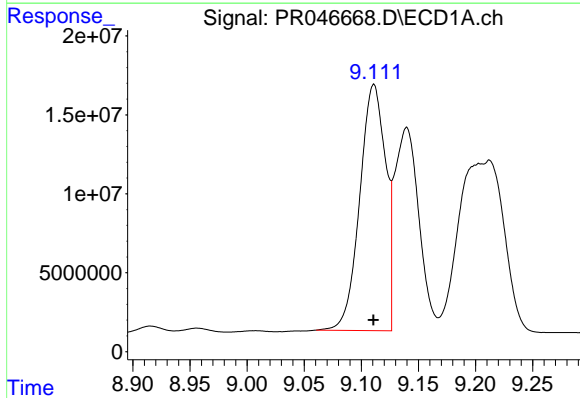
R.T.: 8.777 min  
 Delta R.T.: 0.000 min  
 Response: 664511586  
 Conc: 2792.90 ng/ml

Instrument :  
 ECD\_R  
 ClientSampleId :  
 X068-B4



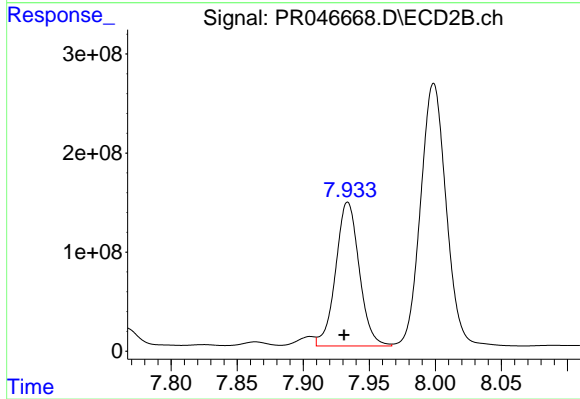
#37 AR-1262-2

R.T.: 7.647 min  
 Delta R.T.: 0.003 min  
 Response: 5243048117  
 Conc: 2557.99 ng/ml



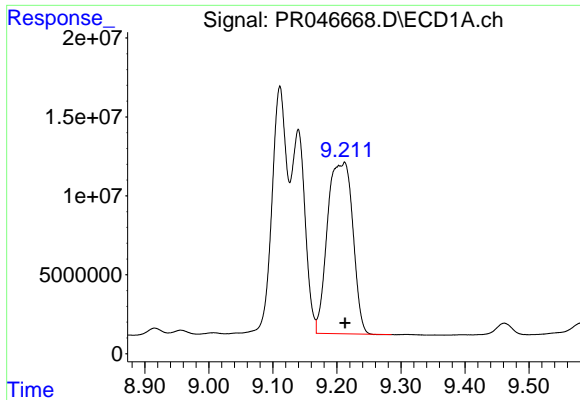
#38 AR-1262-3

R.T.: 9.111 min  
 Delta R.T.: 0.000 min  
 Response: 245640895  
 Conc: 2369.68 ng/ml



#38 AR-1262-3

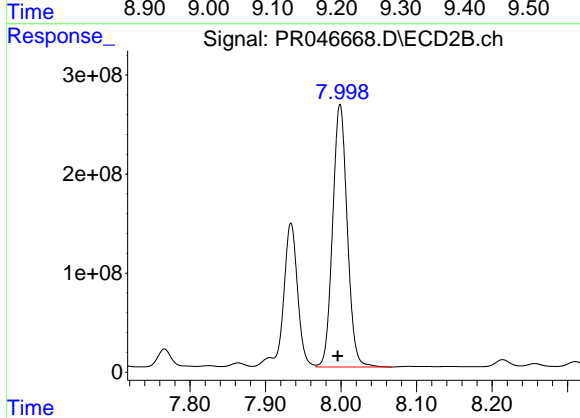
R.T.: 7.934 min  
 Delta R.T.: 0.003 min  
 Response: 1800742829  
 Conc: 2215.66 ng/ml



#39 AR-1262-4

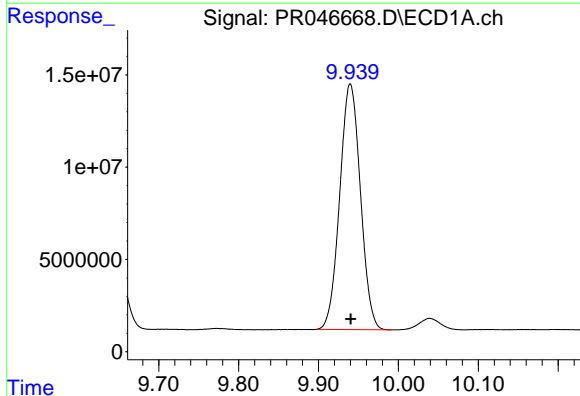
R.T.: 9.212 min  
 Delta R.T.: 0.000 min  
 Response: 297265054  
 Conc: 2429.02 ng/ml

Instrument :  
 ECD\_R  
 ClientSampleId :  
 X068-B4



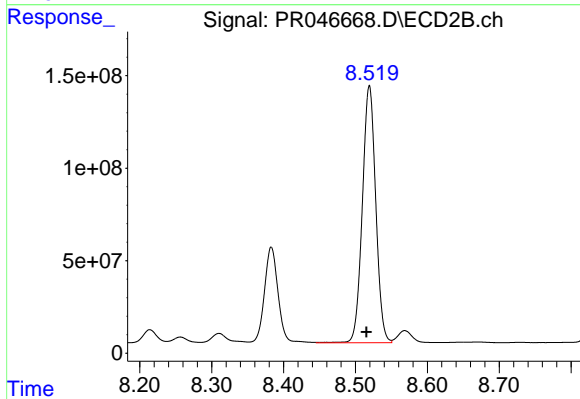
#39 AR-1262-4

R.T.: 7.999 min  
 Delta R.T.: 0.003 min  
 Response: 3564552969  
 Conc: 2463.72 ng/ml



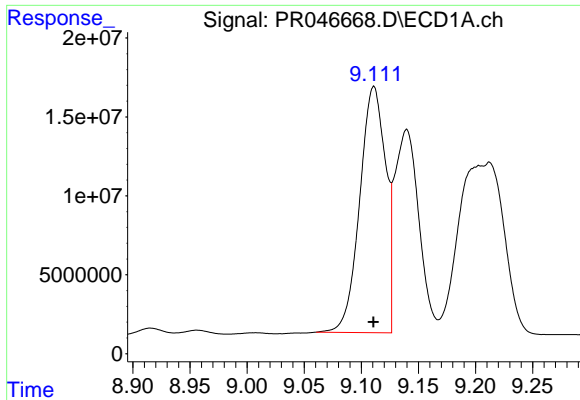
#40 AR-1262-5

R.T.: 9.940 min  
 Delta R.T.: 0.000 min  
 Response: 239894396  
 Conc: 2607.54 ng/ml



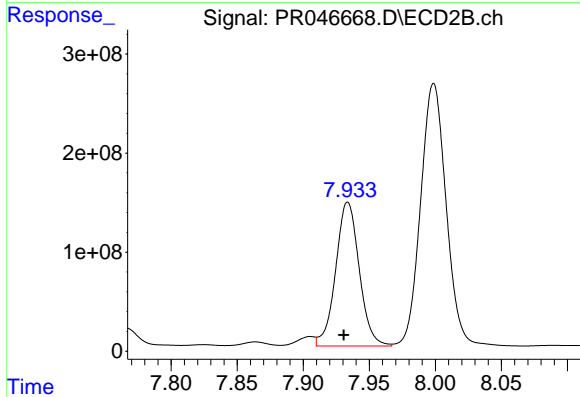
#40 AR-1262-5

R.T.: 8.519 min  
 Delta R.T.: 0.004 min  
 Response: 1796004412  
 Conc: 2642.90 ng/ml

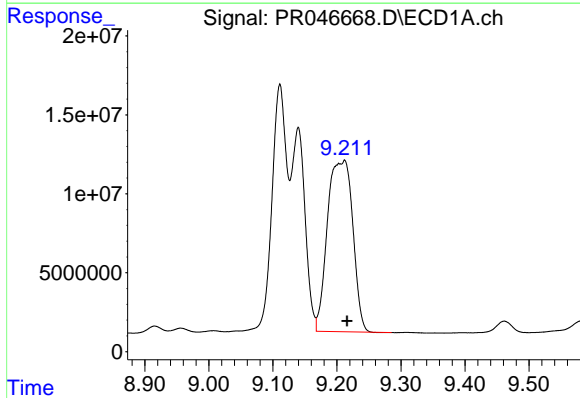


#41 AR-1268-1  
 R.T.: 9.111 min  
 Delta R.T.: 0.000 min  
 Response: 245640895  
 Conc: 846.31 ng/ml

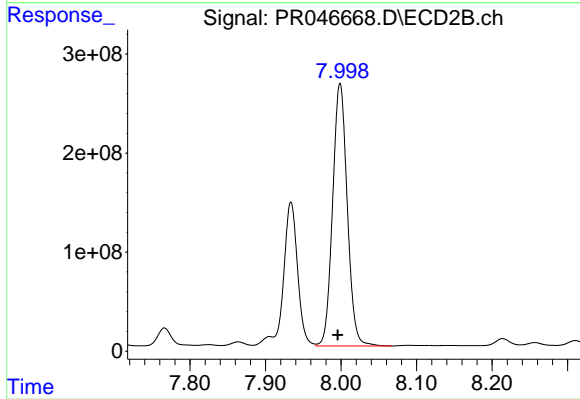
Instrument :  
 ECD\_R  
 ClientSampled :  
 X068-B4



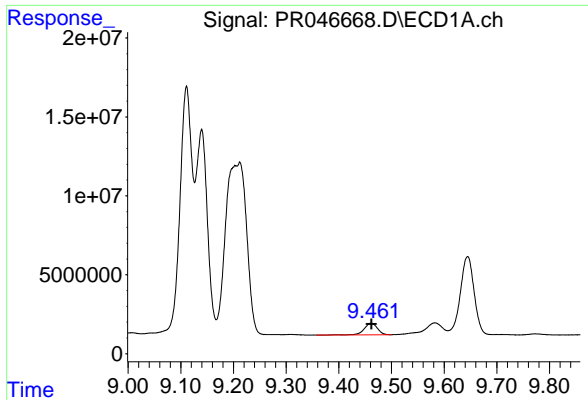
#41 AR-1268-1  
 R.T.: 7.934 min  
 Delta R.T.: 0.003 min  
 Response: 1800742829  
 Conc: 770.35 ng/ml



#42 AR-1268-2  
 R.T.: 9.212 min  
 Delta R.T.: -0.004 min  
 Response: 297265054  
 Conc: 1099.12 ng/ml



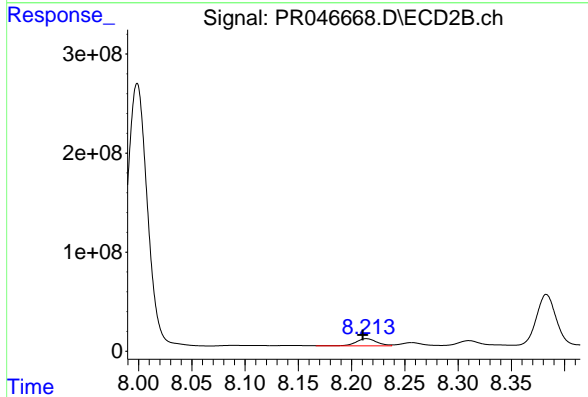
#42 AR-1268-2  
 R.T.: 7.999 min  
 Delta R.T.: 0.003 min  
 Response: 3564552969  
 Conc: 1612.11 ng/ml



#43 AR-1268-3

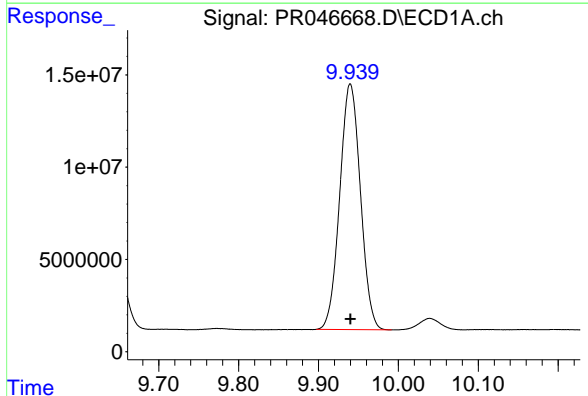
R.T.: 9.461 min  
 Delta R.T.: 0.000 min  
 Response: 12959950  
 Conc: 57.18 ng/ml

Instrument :  
 ECD\_R  
 ClientSampled :  
 X068-B4



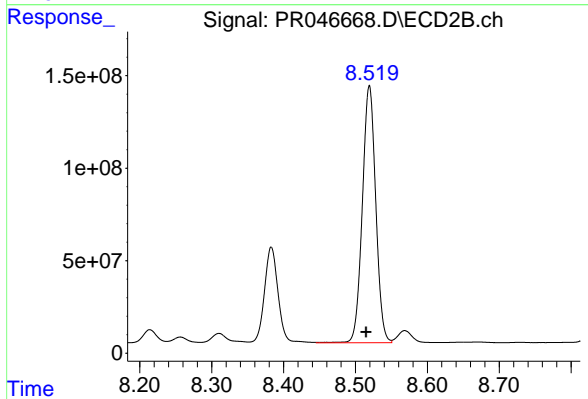
#43 AR-1268-3

R.T.: 8.214 min  
 Delta R.T.: 0.003 min  
 Response: 101252430  
 Conc: 55.88 ng/ml



#44 AR-1268-4

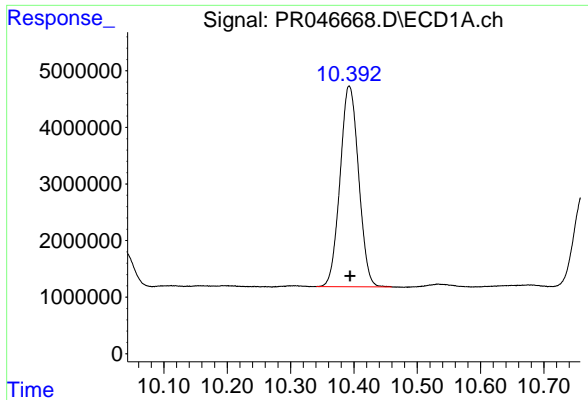
R.T.: 9.940 min  
 Delta R.T.: 0.000 min  
 Response: 239894396  
 Conc: 2302.44 ng/ml



#44 AR-1268-4

R.T.: 8.519 min  
 Delta R.T.: 0.004 min  
 Response: 1796004412  
 Conc: 2339.15 ng/ml

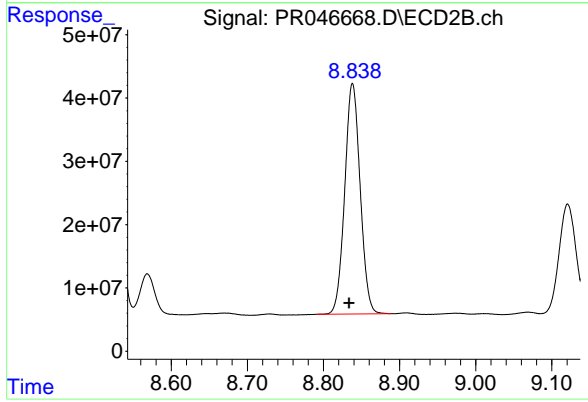




#45 AR-1268-5

R.T.: 10.393 min  
Delta R.T.: -0.001 min  
Response: 72213640  
Conc: 89.62 ng/ml

Instrument :  
ECD\_R  
ClientSampleId :  
X068-B4



#45 AR-1268-5

R.T.: 8.838 min  
Delta R.T.: 0.004 min  
Response: 512954439  
Conc: 92.46 ng/ml