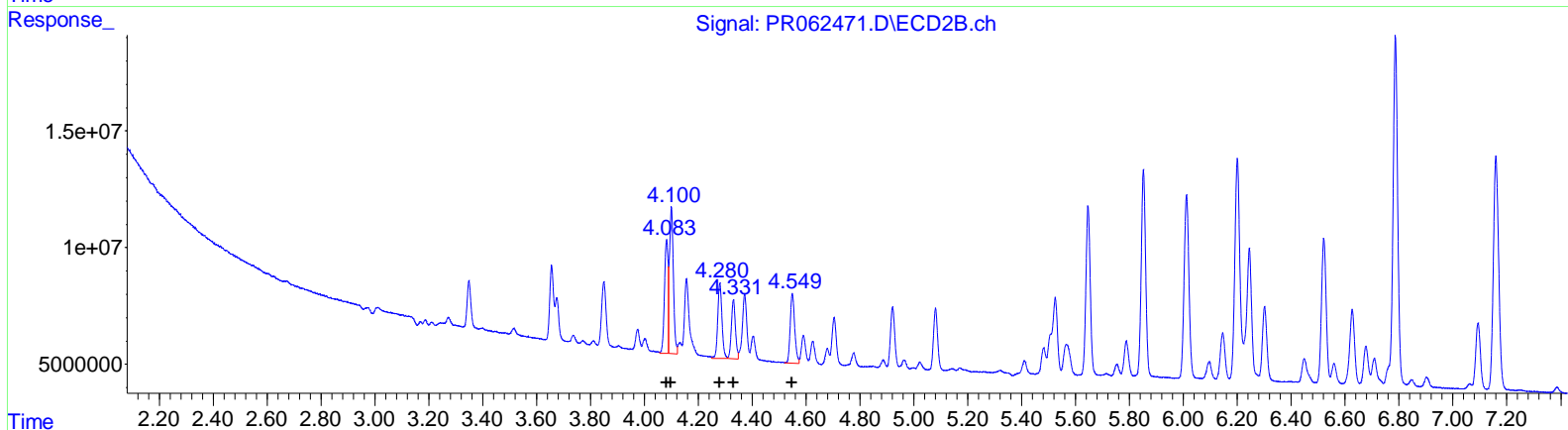
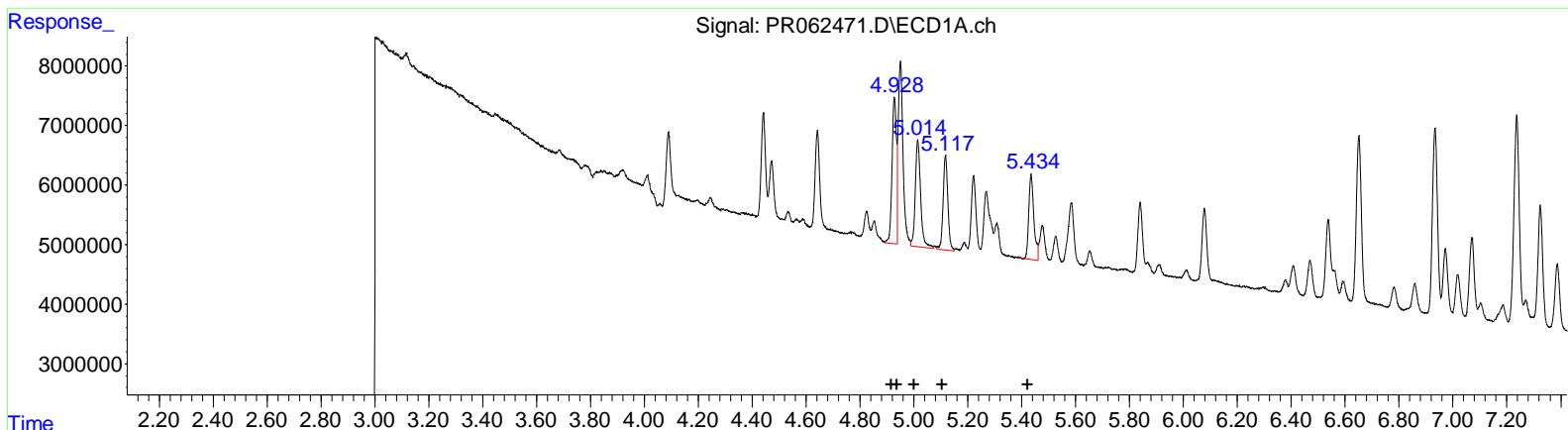


Data Path : Z:\pestpcbsrv\HPCHEM1\ECD_R\Data\PR080223\
 Data File : PR062471.D
 Signal(s) : Signal #1: ECD1A.ch Signal #2: ECD2B.ch
 Acq On : 02 Aug 2023 12:37
 Operator : YPAJ
 Sample : 03820-14
 Misc :
 ALS Vial : 10 Sample Multiplier: 1

Integration File signal 1: autoint1.e
 Integration File signal 2: autoint2.e
 Quant Time: Aug 03 01:39:58 2023
 Quant Method : Z:\pestpcbsrv\HPCHEM1\ECD_R\Method\PR072723CLP.M
 Quant Title : GC EXTRACTABLES
 QLast Update : Thu Jul 27 05:18:59 2023
 Response via : Initial Calibration
 Integrator: ChemStation

Volume Inj. : 1 µl
 Signal #1 Phase : ZB MR1 Signal #2 Phase: ZB MR2
 Signal #1 Info : 30Mx0.32mmx 0.5µm Signal #2 Info : 30M x 0.32mm x 0.25µm



QEdit

(3) AR-1016-1 (L1)

R.T.	Response	Conc
4.93	27114160	401.34
4.93	27114160	276.96
5.01	24576859	395.02
5.12	19543917	388.76
5.43	18803246	366.66

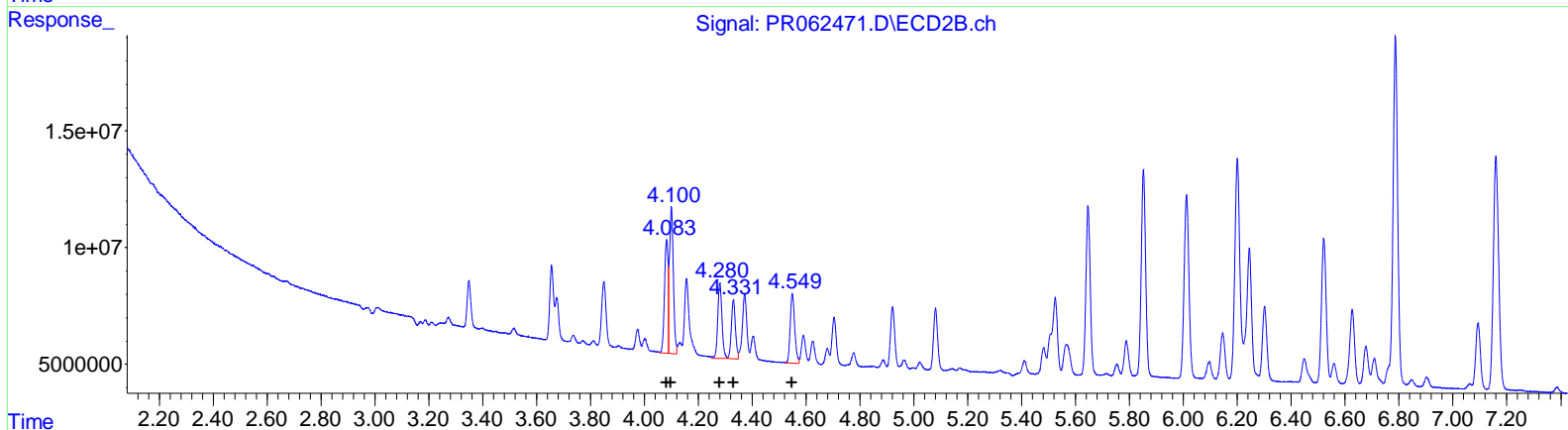
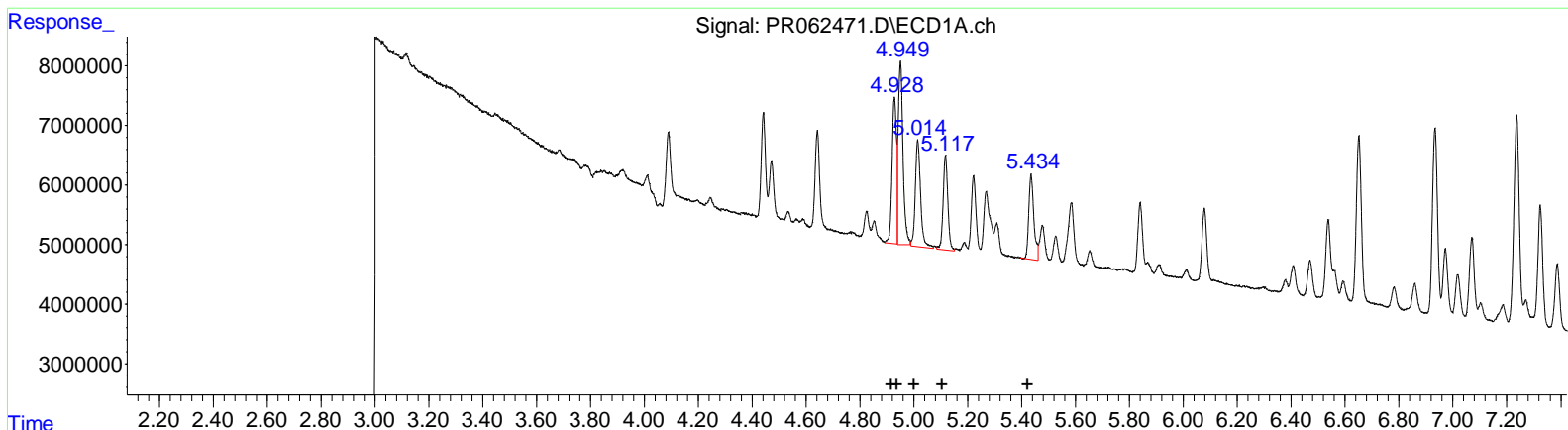
(3) AR-1016-1 #2 (L1)

R.T.	Response	Conc
4.08	45629924	414.04
4.10	63504053	413.30
4.28	34203901	404.83
4.33	26527339	388.42
4.55	34162699	377.76

Data Path : Z:\pestpcbsrv\HPCHEM1\ECD_R\Data\PR080223\
 Data File : PR062471.D
 Signal(s) : Signal #1: ECD1A.ch Signal #2: ECD2B.ch
 Acq On : 02 Aug 2023 12:37
 Operator : YPAJ
 Sample : 03820-14
 Misc :
 ALS Vial : 10 Sample Multiplier: 1

Integration File signal 1: autoint1.e
 Integration File signal 2: autoint2.e
 Quant Time: Aug 03 01:39:58 2023
 Quant Method : Z:\pestpcbsrv\HPCHEM1\ECD_R\Method\PR072723CLP.M
 Quant Title : GC EXTRACTABLES
 QLast Update : Thu Jul 27 05:18:59 2023
 Response via : Initial Calibration
 Integrator: ChemStation

Volume Inj. : 1 µl
 Signal #1 Phase : ZB MR1 Signal #2 Phase: ZB MR2
 Signal #1 Info : 30Mx0.32mmx 0.5µm Signal #2 Info : 30M x 0.32mm x 0.25µm



QEdit

(3) AR-1016-1 #2 (L1)

R.T.	Response	Conc
4.93	27114160	401.34
4.95	36709616	374.98
5.01	24576859	395.02
5.12	19543917	388.76
5.43	18803246	366.66

(3) AR-1016-1 #2 (L1)

R.T.	Response	Conc
4.08	45629924	414.04
4.10	61586817	400.82
4.28	34203901	404.83
4.33	26527339	388.42
4.55	34162699	377.76