

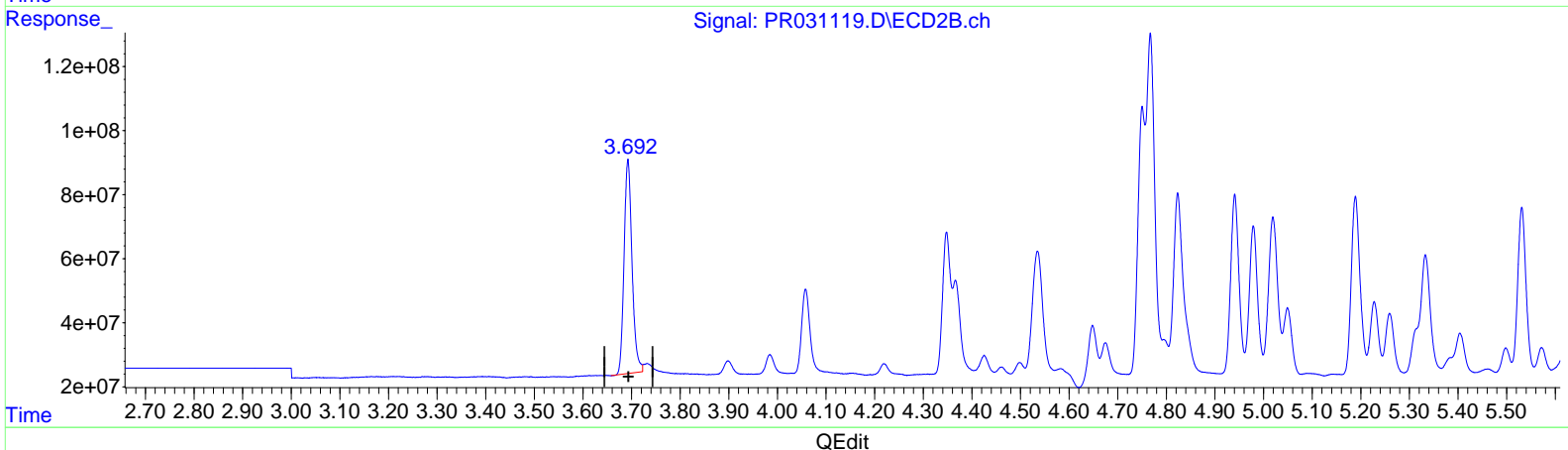
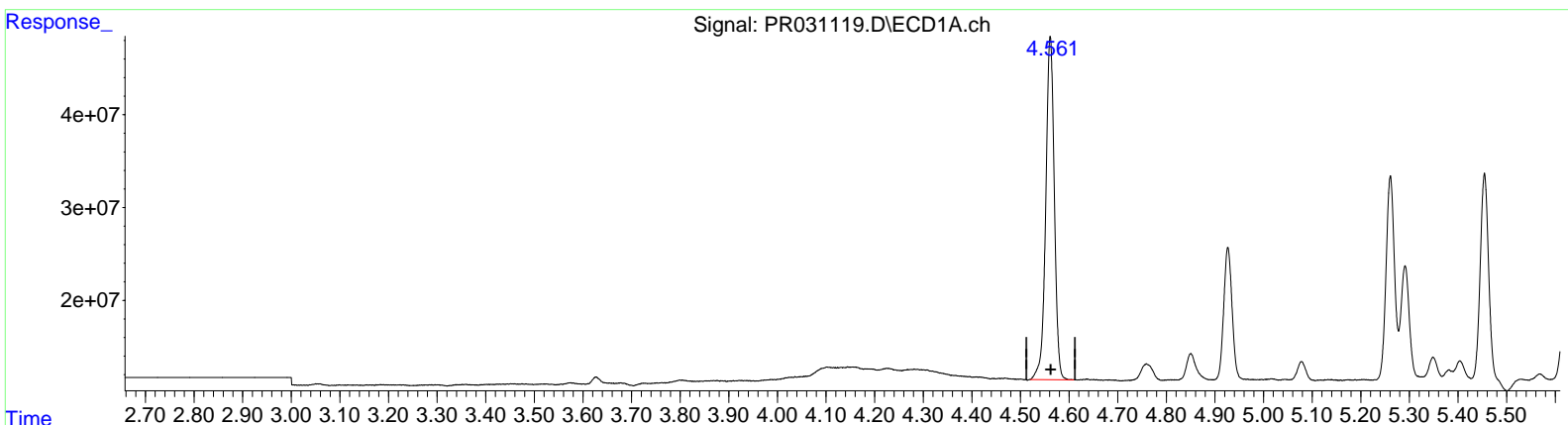
Data Path : Z:\pestpcbsrv\HPCHEM1\ECD\_R\Data\PR080418\  
 Data File : PR031119.D  
 Signal(s) : Signal #1: ECD1A.ch Signal #2: ECD2B.ch  
 Acq On : 03 Aug 2018 03:19  
 Operator : SM\MA  
 Sample : J4206-08MS  
 Misc :  
 ALS Vial : 38 Sample Multiplier: 1

**Instrument :**  
 ECD\_R  
**ClientSampled :**  
 JJ1L0MS

**Manual Integrations**  
**APPROVED**  
 Sohil  
 8/6/2018 3:38:30 PM

Integration File signal 1: autoint1.e  
 Integration File signal 2: autoint2.e  
 Quant Time: Aug 03 05:34:56 2018  
 Quant Method : Z:\pestpcbsrv\HPCHEM1\ECD\_R\Method\PR080218CLP.M  
 Quant Title : GC EXTRACTABLES  
 QLast Update : Thu Aug 02 03:51:20 2018  
 Response via : Initial Calibration  
 Integrator: ChemStation

Volume Inj. : 1 µl  
 Signal #1 Phase : ZB MR1 Signal #2 Phase: ZB MR2  
 Signal #1 Info : 30Mx0.32mmx 0.5µm Signal #2 Info : 30M x 0.32mm x 0.25µm



(1) Tetrachloro-m-xylene (SA)

4.561min 34.138 ng/ml  
 response 452243217

(1) Tetrachloro-m-xylene #2 (SA)

3.693min 34.481 ng/ml  
 response 760393621

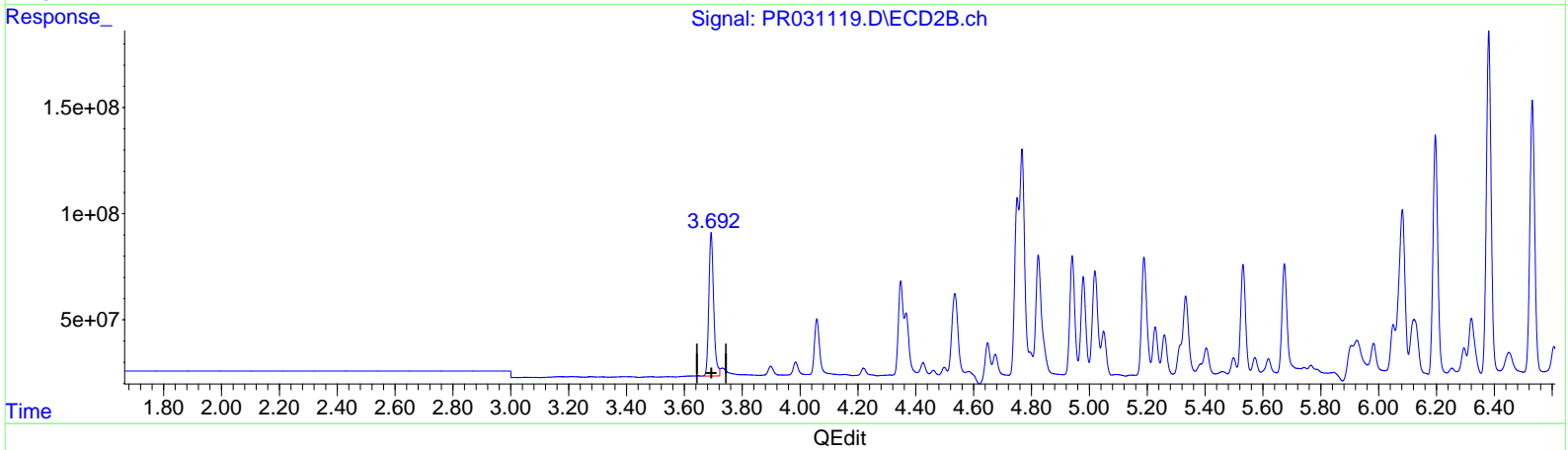
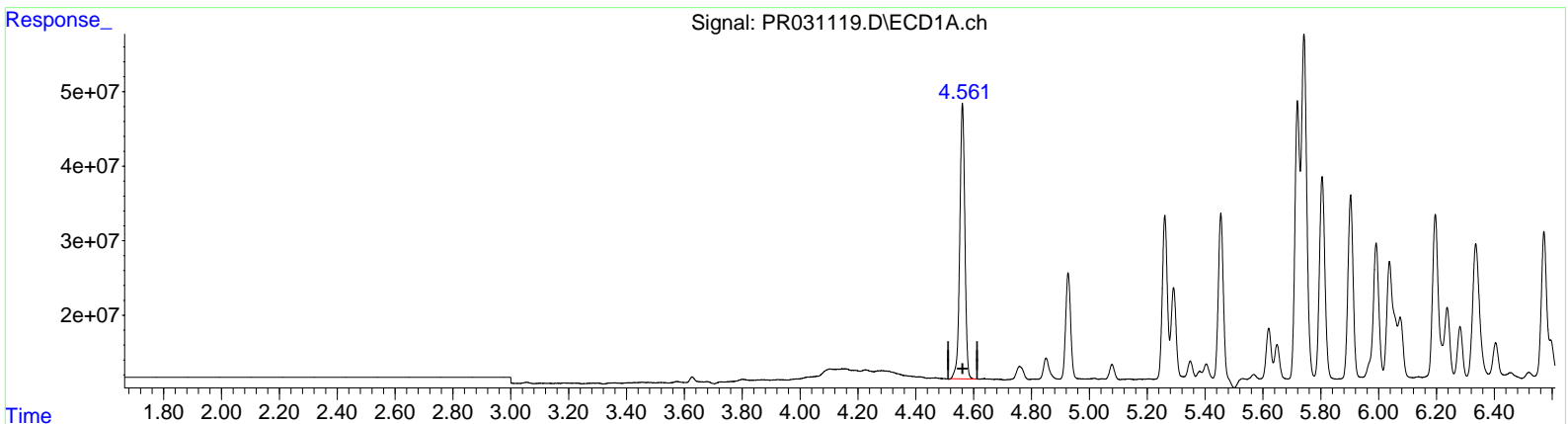
Data Path : Z:\pestpcbsrv\HPCHEM1\ECD\_R\Data\PR080418\  
 Data File : PR031119.D  
 Signal(s) : Signal #1: ECD1A.ch Signal #2: ECD2B.ch  
 Acq On : 03 Aug 2018 03:19  
 Operator : SM\MA  
 Sample : J4206-08MS  
 Misc :  
 ALS Vial : 38 Sample Multiplier: 1

**Instrument :**  
 ECD\_R  
**ClientSampled :**  
 JJ1L0MS

**Manual Integrations**  
**APPROVED**  
 Sohil  
 8/6/2018 3:38:30 PM

Integration File signal 1: autoint1.e  
 Integration File signal 2: autoint2.e  
 Quant Time: Aug 03 05:34:56 2018  
 Quant Method : Z:\pestpcbsrv\HPCHEM1\ECD\_R\Method\PR080218CLP.M  
 Quant Title : GC EXTRACTABLES  
 QLast Update : Thu Aug 02 03:51:20 2018  
 Response via : Initial Calibration  
 Integrator: ChemStation

Volume Inj. : 1 µl  
 Signal #1 Phase : ZB MR1 Signal #2 Phase: ZB MR2  
 Signal #1 Info : 30Mx0.32mmx 0.5µm Signal #2 Info : 30M x 0.32mm x 0.25µm



(1) Tetrachloro-m-xylene (SA)

4.561min 34.138 ng/ml

response 452243217

(1) Tetrachloro-m-xylene #2 (SA)

3.692min 35.524 ng/ml m

response 783380296

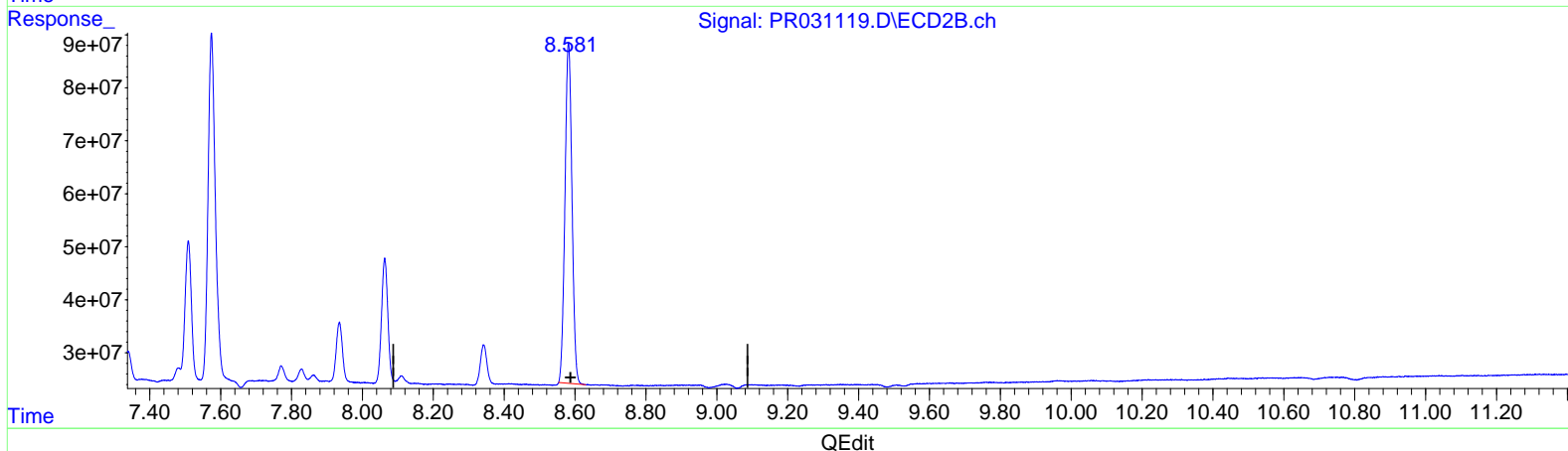
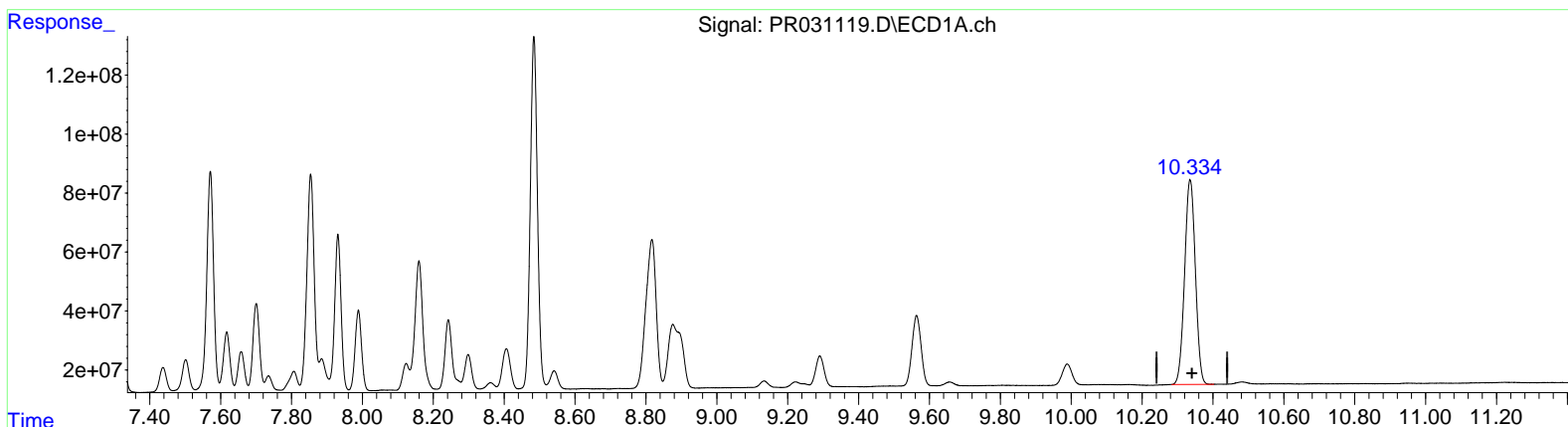
Data Path : Z:\pestpcbsrv\HPCHEM1\ECD\_R\Data\PR080418\  
 Data File : PR031119.D  
 Signal(s) : Signal #1: ECD1A.ch Signal #2: ECD2B.ch  
 Acq On : 03 Aug 2018 03:19  
 Operator : SM\MA  
 Sample : J4206-08MS  
 Misc :  
 ALS Vial : 38 Sample Multiplier: 1

**Instrument :**  
 ECD\_R  
**Client Sampled :**  
 JJ1L0MS

**Manual Integrations**  
**APPROVED**  
 Sohil  
 8/6/2018 3:38:30 PM

Integration File signal 1: autoint1.e  
 Integration File signal 2: autoint2.e  
 Quant Time: Aug 03 05:34:56 2018  
 Quant Method : Z:\pestpcbsrv\HPCHEM1\ECD\_R\Method\PR080218CLP.M  
 Quant Title : GC EXTRACTABLES  
 QLast Update : Thu Aug 02 03:51:20 2018  
 Response via : Initial Calibration  
 Integrator: ChemStation

Volume Inj. : 1 µl  
 Signal #1 Phase : ZB MR1 Signal #2 Phase: ZB MR2  
 Signal #1 Info : 30Mx0.32mmx 0.5µm Signal #2 Info : 30M x 0.32mm x 0.25µm



(2) Decachlorobiphenyl (SA)  
 10.335min 44.111 ng/ml  
 response 1460763368

(2) Decachlorobiphenyl #2 (SA)  
 8.582min 44.359 ng/ml  
 response 881736688

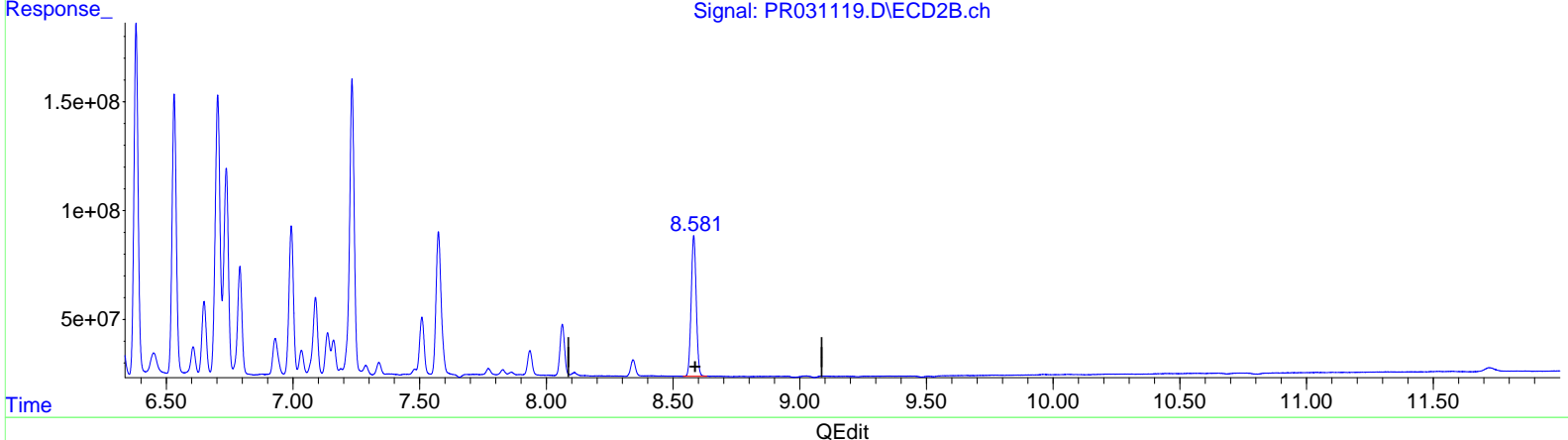
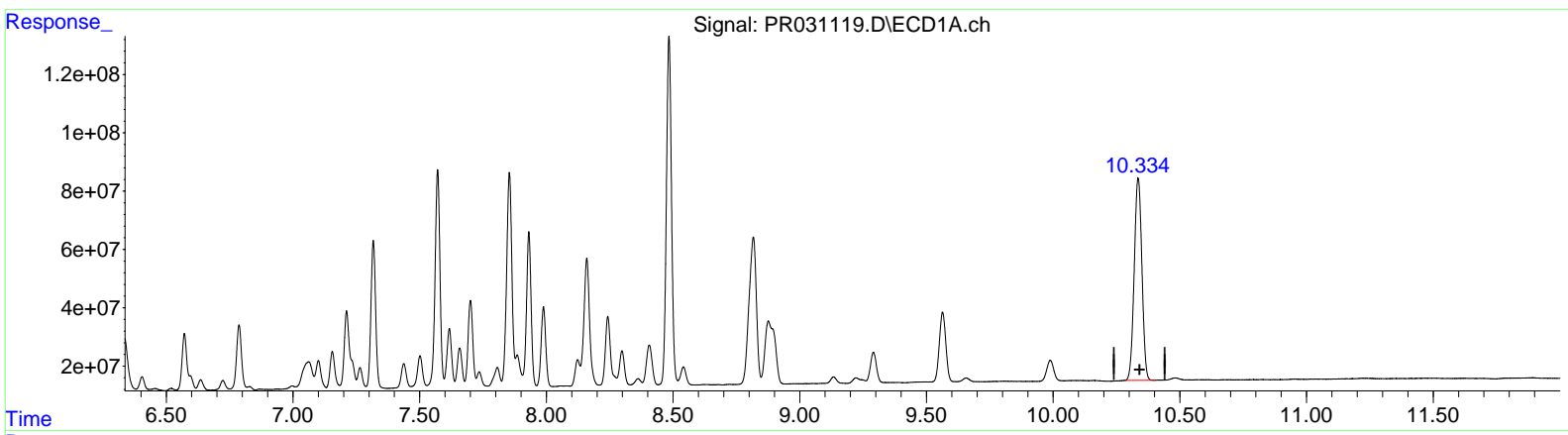
Data Path : Z:\pestpcbsrv\HPCHEM1\ECD\_R\Data\PR080418\  
 Data File : PR031119.D  
 Signal(s) : Signal #1: ECD1A.ch Signal #2: ECD2B.ch  
 Acq On : 03 Aug 2018 03:19  
 Operator : SM\MA  
 Sample : J4206-08MS  
 Misc :  
 ALS Vial : 38 Sample Multiplier: 1

Instrument :  
 ECD\_R  
 ClientSampled :  
 JJ1L0MS

Manual Integrations  
**APPROVED**  
 Sohil  
 8/6/2018 3:38:30 PM

Integration File signal 1: autoint1.e  
 Integration File signal 2: autoint2.e  
 Quant Time: Aug 03 05:34:56 2018  
 Quant Method : Z:\pestpcbsrv\HPCHEM1\ECD\_R\Method\PR080218CLP.M  
 Quant Title : GC EXTRACTABLES  
 QLast Update : Thu Aug 02 03:51:20 2018  
 Response via : Initial Calibration  
 Integrator: ChemStation

Volume Inj. : 1 µl  
 Signal #1 Phase : ZB MR1 Signal #2 Phase: ZB MR2  
 Signal #1 Info : 30Mx0.32mmx 0.5µm Signal #2 Info : 30M x 0.32mm x 0.25µm



(2) Decachlorobiphenyl (SA)  
 10.335min 44.111 ng/ml  
 response 1460763368

(2) Decachlorobiphenyl #2 (SA)  
 8.581min 45.065 ng/ml m  
 response 895767123

Data Path : Z:\pestpcbsrv\HPCHEM1\ECD\_R\Data\PR080418\  
 Data File : PR031119.D  
 Signal(s) : Signal #1: ECD1A.ch Signal #2: ECD2B.ch  
 Acq On : 03 Aug 2018 03:19  
 Operator : SM\MA  
 Sample : J4206-08MS  
 Misc :  
 ALS Vial : 38 Sample Multiplier: 1

**Instrument :**  
 ECD\_R  
**Client Sampled :**  
 JJ1L0MS

Integration File signal 1: autoint1.e  
 Integration File signal 2: autoint2.e  
 Quant Time: Aug 03 05:34:56 2018  
 Quant Method : Z:\pestpcbsrv\HPCHEM1\ECD\_R\Method\PR080218CLP.M  
 Quant Title : GC EXTRACTABLES  
 QLast Update : Thu Aug 02 03:51:20 2018  
 Response via : Initial Calibration  
 Integrator: ChemStation

**Manual Integrations**  
**APPROVED**  
 Sohil  
 8/6/2018 3:38:30 PM

Volume Inj. : 1 µl  
 Signal #1 Phase : ZB MR1 Signal #2 Phase: ZB MR2  
 Signal #1 Info : 30Mx0.32mmx 0.5µm Signal #2 Info : 30M x 0.32mm x 0.25µm

Compound	RT#1	RT#2	Resp#1	Resp#2	ng/ml	ng/ml
-----						
System Monitoring Compounds						
1) SA Tetrachlo...	4.561	3.692	452.2E6	783.4E6	34.138	35.524m
2) SA Decachlor...	10.335	8.581	1460.8E6	895.8E6	44.111	45.065m
Target Compounds						
3) L1 AR-1016-1	5.261	4.348	266.5E6	510.3E6	712.297	733.484
4) L1 AR-1016-2	5.455	4.751	284.5E6	782.1E6	767.384	716.301
5) L1 AR-1016-3	5.719	4.767	415.9E6	1370.4E6	684.815	758.510
6) L1 AR-1016-4	5.805	4.824	357.3E6	819.1E6	668.468	677.389
7) L1 AR-1016-5	6.196	5.189	304.7E6	699.3E6	646.298	636.843
31) L7 AR-1260-1	7.317	6.196	652.8E6	1336.0E6	562.229	506.970
32) L7 AR-1260-2	7.571	6.381	1014.4E6	1856.2E6	600.908	566.648
33) L7 AR-1260-3	7.854	6.531	1077.7E6	1487.8E6	560.223	546.964
34) L7 AR-1260-4	8.160	6.994	691.8E6	812.9E6	493.728	470.260
35) L7 AR-1260-5	8.484	7.233	1680.7E6	1754.2E6	480.220	473.133

} SM 08/09/18

(f)=RT Delta > 1/2 Window (#)=Amounts differ by > 25% (m)=manual int.