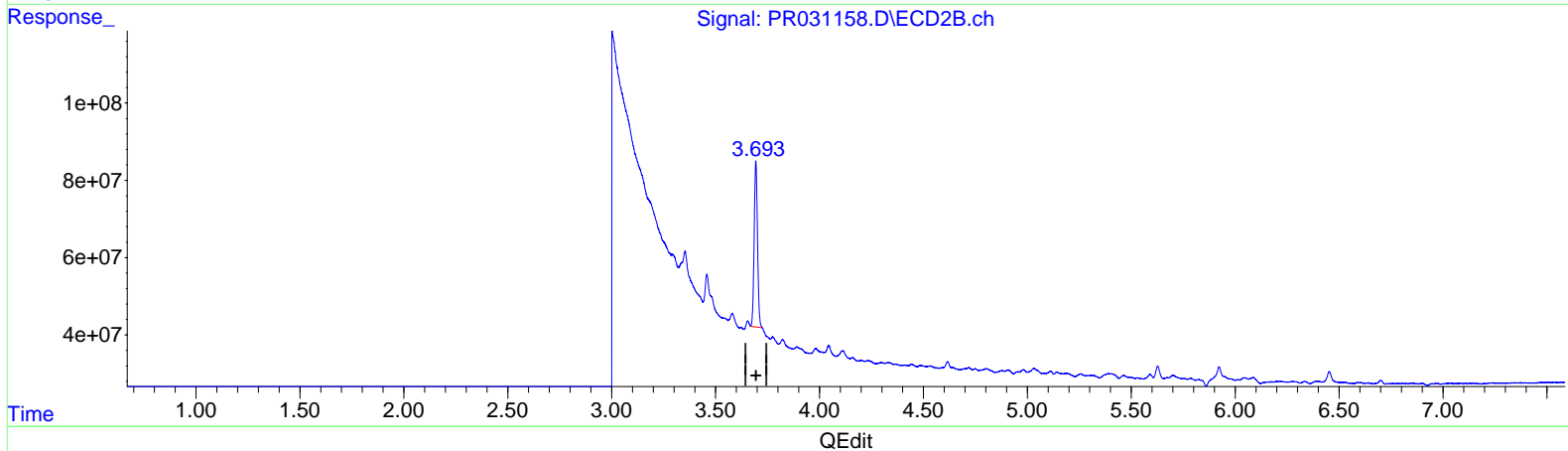
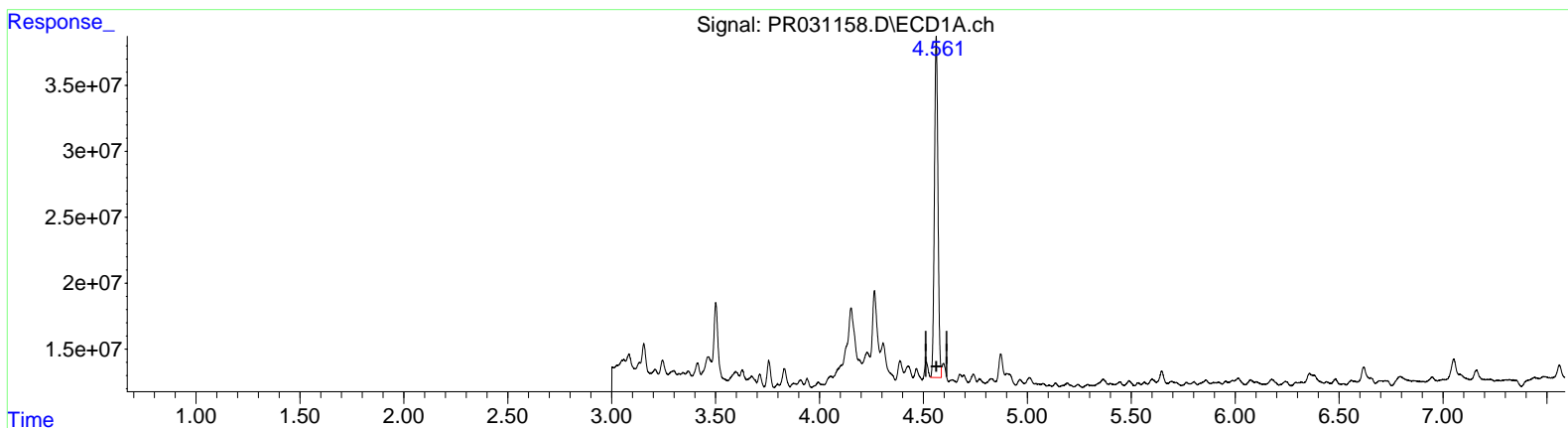


Data Path : Z:\pestpcbsrv\HPCHEM1\ECD_R\Data\PR080518\
 Data File : PR031158.D
 Signal(s) : Signal #1: ECD1A.ch Signal #2: ECD2B.ch
 Acq On : 03 Aug 2018 21:14
 Operator : SM\MA
 Sample : J4265-03
 Misc :
 ALS Vial : 28 Sample Multiplier: 1

Integration File signal 1: autoint1.e
 Integration File signal 2: autoint2.e
 Quant Time: Aug 04 02:05:48 2018
 Quant Method : Z:\pestpcbsrv\HPCHEM1\ECD_R\Method\PR080218CLP.M
 Quant Title : GC EXTRACTABLES
 QLast Update : Thu Aug 02 03:51:20 2018
 Response via : Initial Calibration
 Integrator: ChemStation

Volume Inj. : 1 µl
 Signal #1 Phase : ZB MR1 Signal #2 Phase: ZB MR2
 Signal #1 Info : 30Mx0.32mmx 0.5µm Signal #2 Info : 30M x 0.32mm x 0.25µm



(1) Tetrachloro-m-xylene (SA)

4.561min 23.185 ng/ml m

response 307141408

(1) Tetrachloro-m-xylene #2 (SA)

3.693min 21.702 ng/ml m

response 478580360