

Data Path : Z:\pestpcbsrv\HPCHEM1\ECD_R\Data\PR080519\
 Data File : PR040134.D
 Signal(s) : Signal #1: ECD1A.ch Signal #2: ECD2B.ch
 Acq On : 05 Aug 2019 00:08
 Operator : SM\AJ
 Sample : K4150-01DL 2X
 Misc :
 ALS Vial : 21 Sample Multiplier: 1

Instrument :
 ECD_R
 ClientSampleId :
 S15-01-BDL

Integration File signal 1: autoint1.e
 Integration File signal 2: autoint2.e
 Quant Time: Aug 05 03:51:37 2019
 Quant Method : Z:\pestpcbsrv\HPCHEM1\ECD_R\Method\PR080519.M
 Quant Title : GC EXTRACTABLES
 QLast Update : Mon Aug 05 03:12:12 2019
 Response via : Initial Calibration
 Integrator: ChemStation

Volume Inj. : 2 µl
 Signal #1 Phase : ZB-MR1 Signal #2 Phase: ZB-MR2
 Signal #1 Info : 30Mx0.32mmx 0.50µ Signal #2 Info : 30M x 0.32mm x 0.25µm

Compound	RT#1	RT#2	Resp#1	Resp#2	ng/ml	ng/ml

System Monitoring Compounds						
1) SA Tetrachlo...	3.747	4.592	25007010	109.8E6	10.225	10.537
2) SA Decachlor...	8.679	10.316	16749399	74368341	6.900	7.833
Target Compounds						
20) L4 AR-1242-5	5.600	6.661	20348755	29588173	276.037	131.851 #
24) L5 AR-1248-4	0.000	6.590	0	81505961	N.D.	169.979 #
25) L5 AR-1248-5	5.673	6.661	7845413	29588173	64.476	65.261
26) L6 AR-1254-1	5.600	6.590	20348755	81505961	108.989	178.303 #
27) L6 AR-1254-2	5.745	6.804	12264764	63462056	76.432	87.495
28) L6 AR-1254-3	6.142	7.169	290.6E6	816.1E6	1064.490	1005.422
29) L6 AR-1254-4	6.366	7.451	8750303	112.8E6	42.310	185.441 #
30) L6 AR-1254-5	6.777	7.865	565.3E6	1717.7E6	2338.516	2698.524
31) L7 AR-1260-1	6.268	7.329	175.3E6	641.3E6	1333.267	1582.051
32) L7 AR-1260-2	6.453	7.581	138.2E6	530.2E6	828.450	1083.576 #
33) L7 AR-1260-3	6.604	7.931	195.1E6	189.9E6	1308.370	496.082 #
34) L7 AR-1260-4	7.069	8.157	37843532	764.1E6	295.985	1742.324 #
35) L7 AR-1260-5	7.309	8.489	104.9E6	397.4E6	333.903	425.685 #
36) L8 AR-1262-1	6.864	7.931	19943074	189.9E6	251.828	290.219
37) L8 AR-1262-2	7.309	8.489	104.9E6	397.4E6	258.095	316.352
38) L8 AR-1262-3	7.587	8.826	7991006	283.8E6	51.831	346.463 #
39) L8 AR-1262-4	7.650	8.875	87212072	84054037	301.972	133.735 #
40) L8 AR-1262-5	8.142	9.561	11629108	36980536	88.699	79.984
41) L9 AR-1268-1	7.587	8.826	7991006	283.8E6	12.373	135.985 #
42) L9 AR-1268-2	7.650	8.875	87212072	84054037	146.798	42.306 #
43) L9 AR-1268-3	7.903	0.000	2693961	0	5.648	N.D. #
44) L9 AR-1268-4	8.142	9.561	11629108	36980536	55.435	50.703
45) L9 AR-1268-5	8.429	9.978	2674260	11243150	1.665	1.894

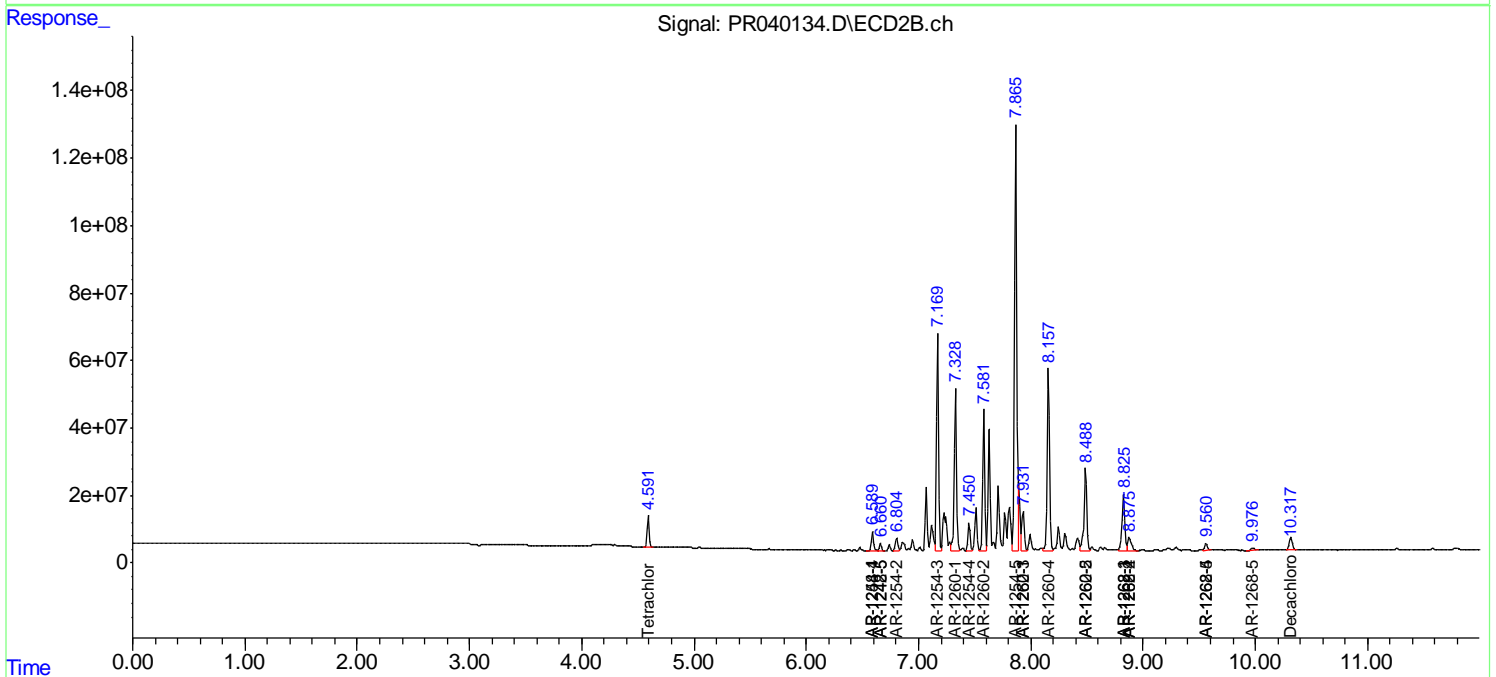
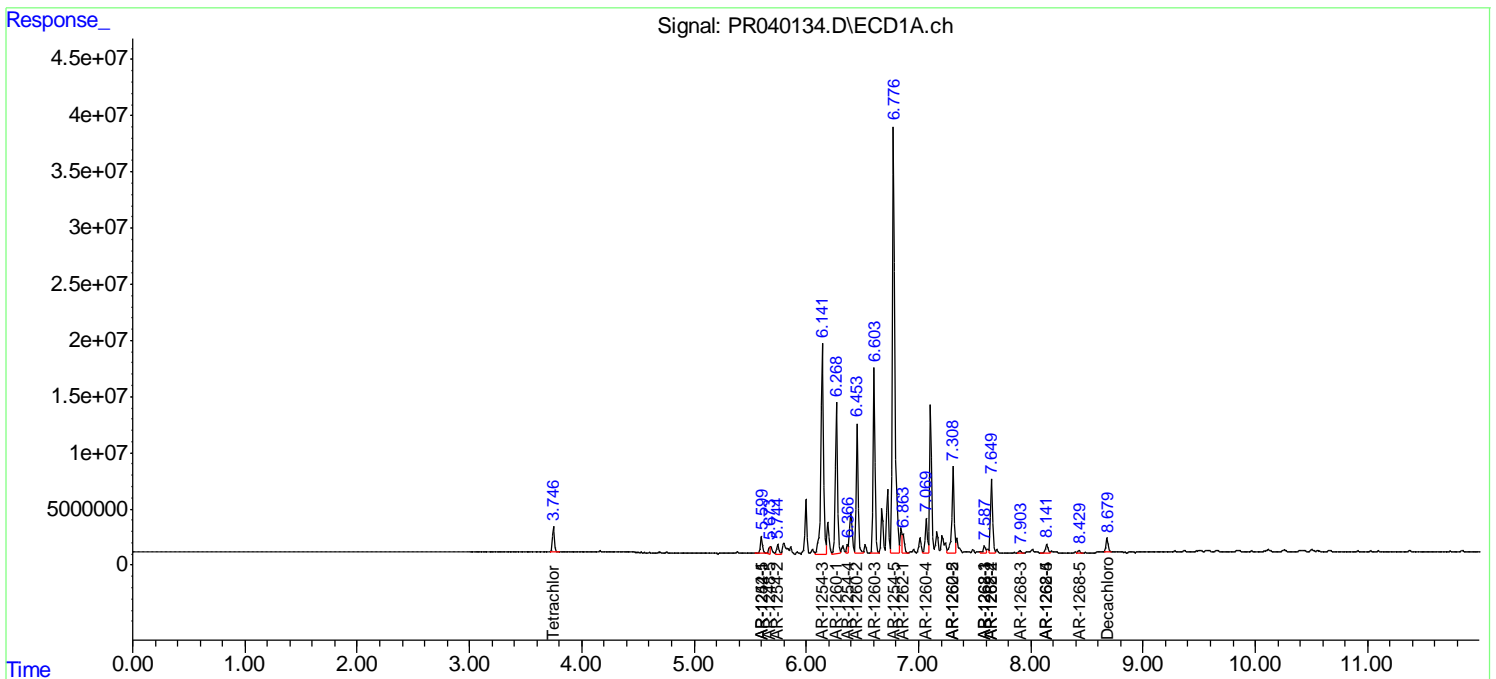
(f)=RT Delta > 1/2 Window (#)=Amounts differ by > 25% (m)=manual int.

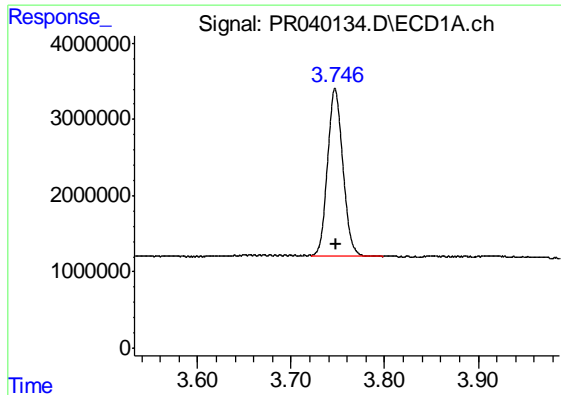
Data Path : Z:\pestpcbsrv\HPCHEM1\ECD_R\Data\PR080519\
 Data File : PR040134.D
 Signal(s) : Signal #1: ECD1A.ch Signal #2: ECD2B.ch
 Acq On : 05 Aug 2019 00:08
 Operator : SM\AJ
 Sample : K4150-01DL 2X
 Misc :
 ALS Vial : 21 Sample Multiplier: 1

Instrument :
 ECD_R
 ClientSampled :
 S15-01-BDL

Integration File signal 1: autoint1.e
 Integration File signal 2: autoint2.e
 Quant Time: Aug 05 03:51:37 2019
 Quant Method : Z:\pestpcbsrv\HPCHEM1\ECD_R\Method\PR080519.M
 Quant Title : GC EXTRACTABLES
 QLast Update : Mon Aug 05 03:12:12 2019
 Response via : Initial Calibration
 Integrator: ChemStation

Volume Inj. : 2 µl
 Signal #1 Phase : ZB-MR1 Signal #2 Phase: ZB-MR2
 Signal #1 Info : 30Mx0.32mmx 0.50µ Signal #2 Info : 30M x 0.32mm x 0.25µm

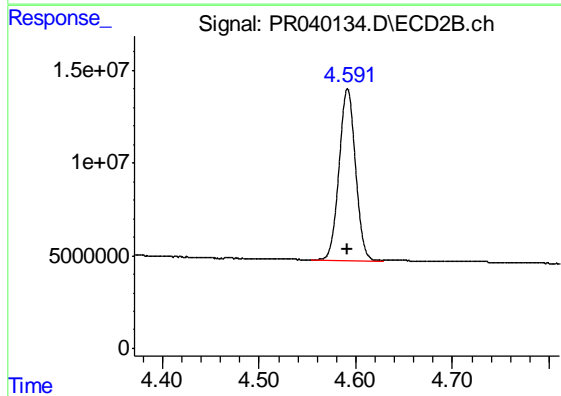




#1 Tetrachloro-m-xylene

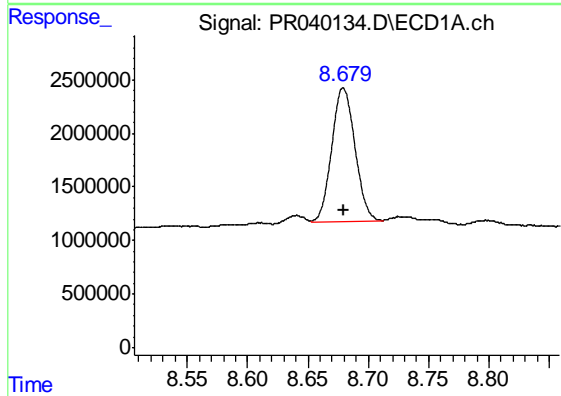
R.T.: 3.747 min
Delta R.T.: -0.001 min
Response: 25007010
Conc: 10.22 ng/ml

Instrument :
ECD_R
ClientSampleId :
S15-01-BDL



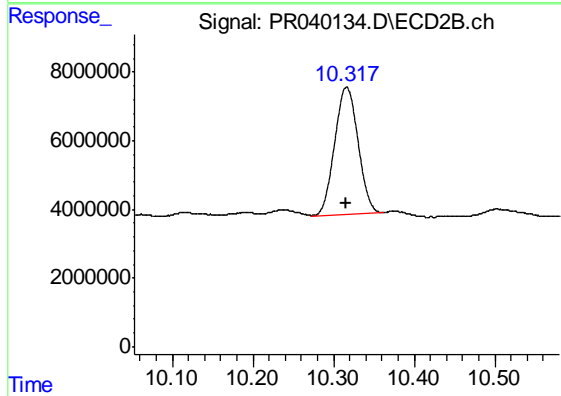
#1 Tetrachloro-m-xylene

R.T.: 4.592 min
Delta R.T.: 0.000 min
Response: 109819187
Conc: 10.54 ng/ml



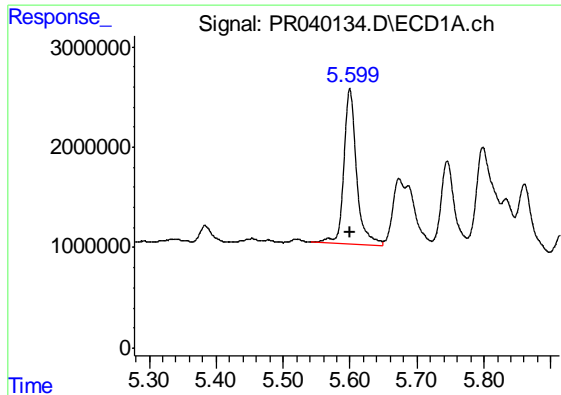
#2 Decachlorobiphenyl

R.T.: 8.679 min
Delta R.T.: 0.000 min
Response: 16749399
Conc: 6.90 ng/ml



#2 Decachlorobiphenyl

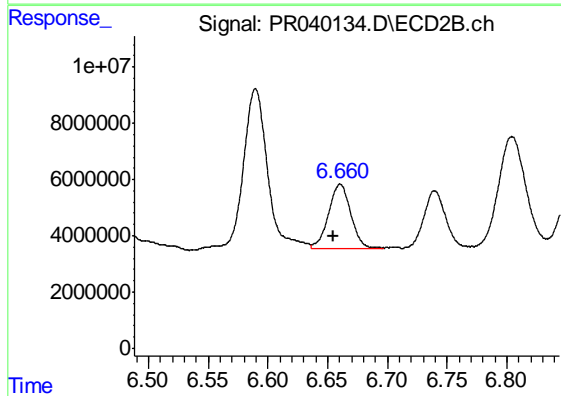
R.T.: 10.316 min
Delta R.T.: 0.001 min
Response: 74368341
Conc: 7.83 ng/ml



#20 AR-1242-5

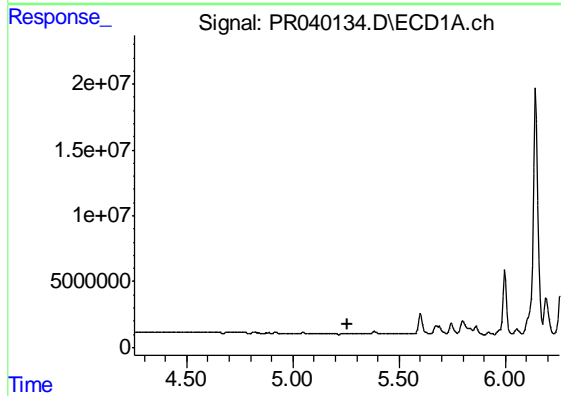
R.T.: 5.600 min
 Delta R.T.: 0.000 min
 Response: 20348755
 Conc: 276.04 ng/ml

Instrument :
 ECD_R
 ClientSampleId :
 S15-01-BDL



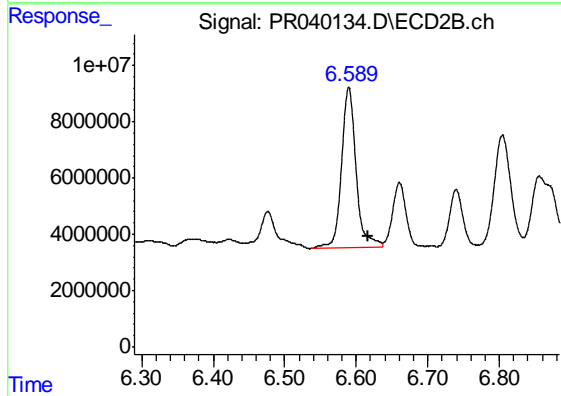
#20 AR-1242-5

R.T.: 6.661 min
 Delta R.T.: 0.005 min
 Response: 29588173
 Conc: 131.85 ng/ml



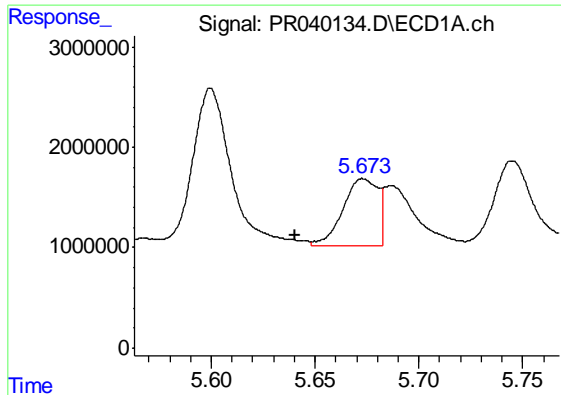
#24 AR-1248-4

R.T.: 0.000 min
 Exp R.T. : 5.255 min
 Response: 0
 Conc: N.D.



#24 AR-1248-4

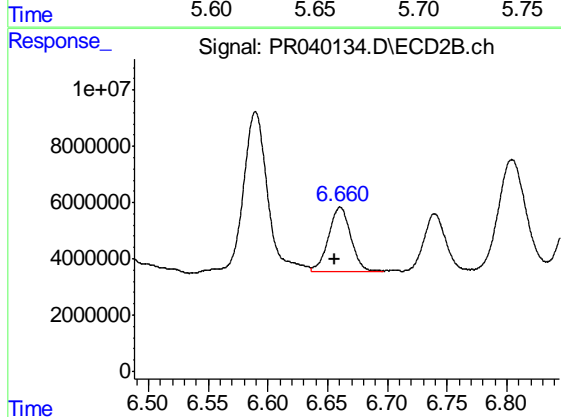
R.T.: 6.590 min
 Delta R.T.: -0.027 min
 Response: 81505961
 Conc: 169.98 ng/ml



#25 AR-1248-5

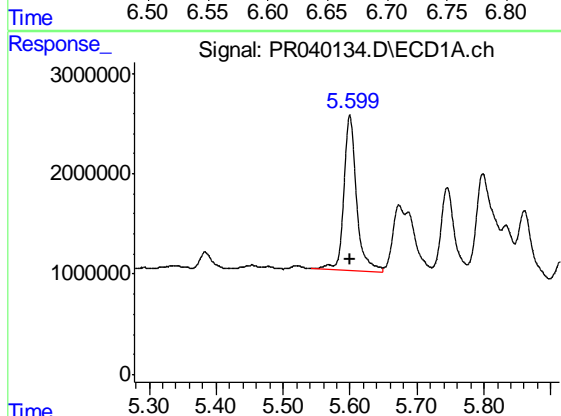
R.T.: 5.673 min
 Delta R.T.: 0.033 min
 Response: 7845413
 Conc: 64.48 ng/ml

Instrument :
 ECD_R
 ClientSampleId :
 S15-01-BDL



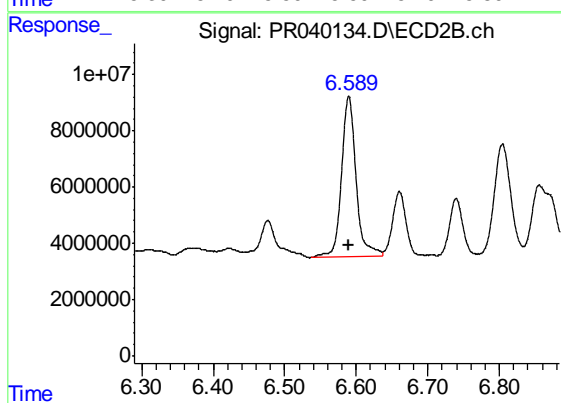
#25 AR-1248-5

R.T.: 6.661 min
 Delta R.T.: 0.005 min
 Response: 29588173
 Conc: 65.26 ng/ml



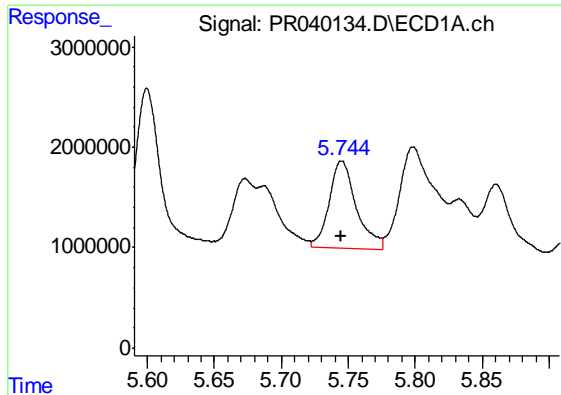
#26 AR-1254-1

R.T.: 5.600 min
 Delta R.T.: 0.000 min
 Response: 20348755
 Conc: 108.99 ng/ml



#26 AR-1254-1

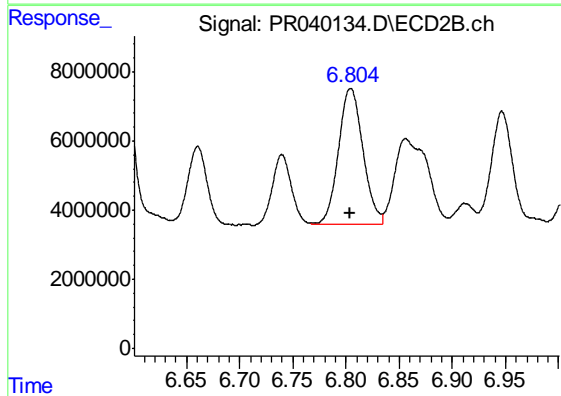
R.T.: 6.590 min
 Delta R.T.: 0.000 min
 Response: 81505961
 Conc: 178.30 ng/ml



#27 AR-1254-2

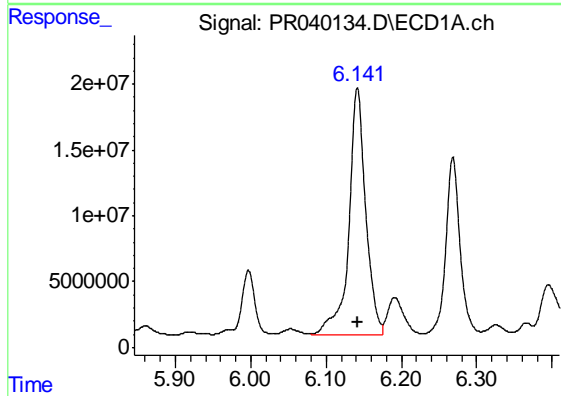
R.T.: 5.745 min
Delta R.T.: 0.000 min
Response: 12264764
Conc: 76.43 ng/ml

Instrument :
ECD_R
ClientSampled :
S15-01-BDL



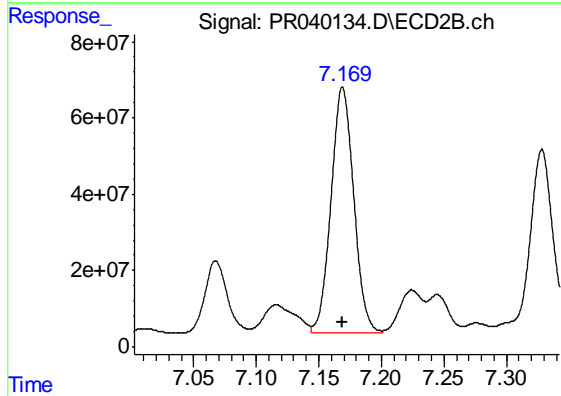
#27 AR-1254-2

R.T.: 6.804 min
Delta R.T.: 0.000 min
Response: 63462056
Conc: 87.49 ng/ml



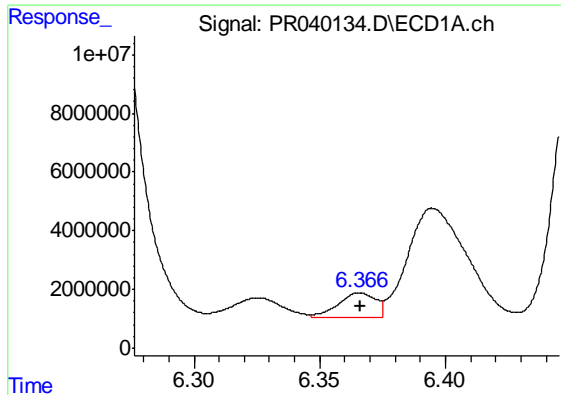
#28 AR-1254-3

R.T.: 6.142 min
Delta R.T.: 0.000 min
Response: 290649120
Conc: 1064.49 ng/ml



#28 AR-1254-3

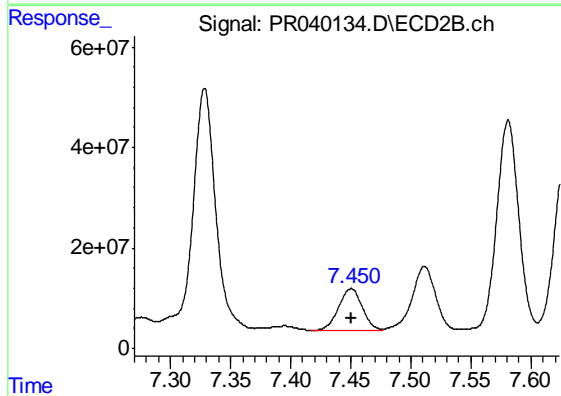
R.T.: 7.169 min
Delta R.T.: 0.000 min
Response: 816144958
Conc: 1005.42 ng/ml



#29 AR-1254-4

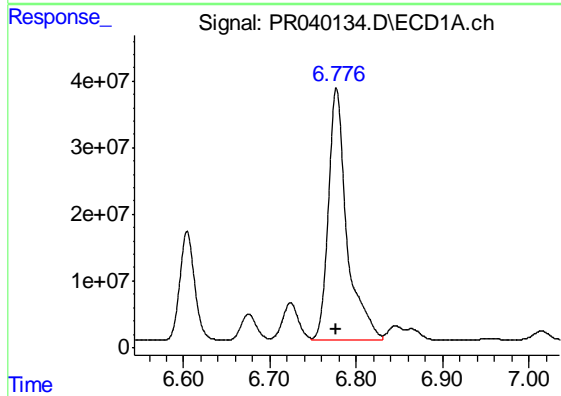
R.T.: 6.366 min
 Delta R.T.: 0.000 min
 Response: 8750303
 Conc: 42.31 ng/ml

Instrument :
 ECD_R
 ClientSampled :
 S15-01-BDL



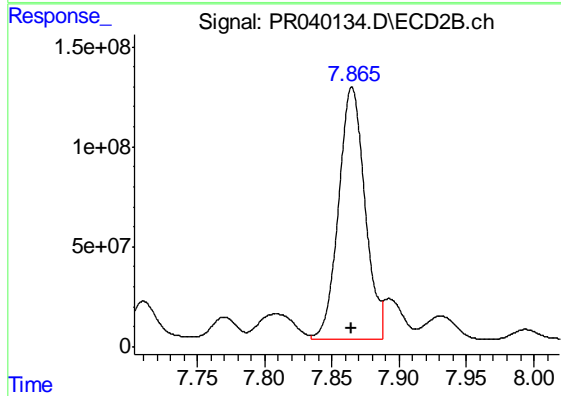
#29 AR-1254-4

R.T.: 7.451 min
 Delta R.T.: 0.000 min
 Response: 112809558
 Conc: 185.44 ng/ml



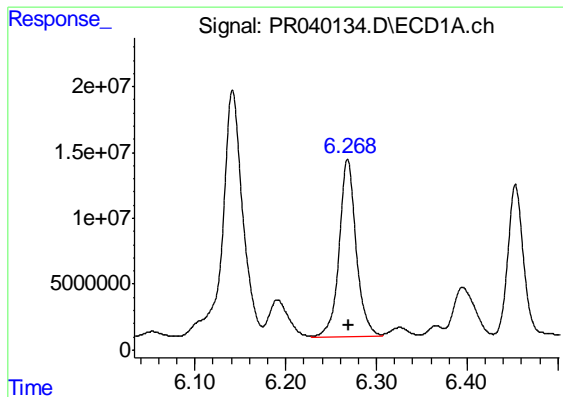
#30 AR-1254-5

R.T.: 6.777 min
 Delta R.T.: 0.000 min
 Response: 565320295
 Conc: 2338.52 ng/ml



#30 AR-1254-5

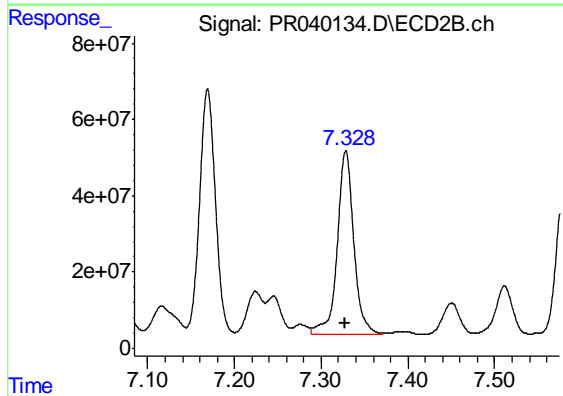
R.T.: 7.865 min
 Delta R.T.: 0.000 min
 Response: 1717727157
 Conc: 2698.52 ng/ml



#31 AR-1260-1

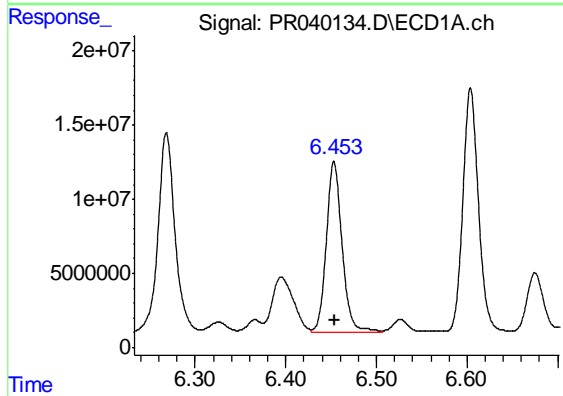
R.T.: 6.268 min
 Delta R.T.: 0.000 min
 Response: 175281798
 Conc: 1333.27 ng/ml

Instrument :
 ECD_R
 ClientSampleId :
 S15-01-BDL



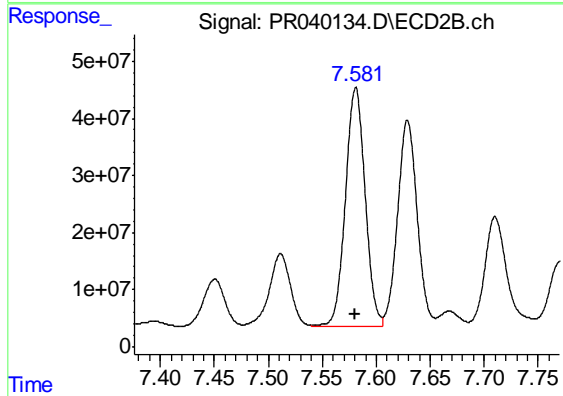
#31 AR-1260-1

R.T.: 7.329 min
 Delta R.T.: 0.000 min
 Response: 641269428
 Conc: 1582.05 ng/ml



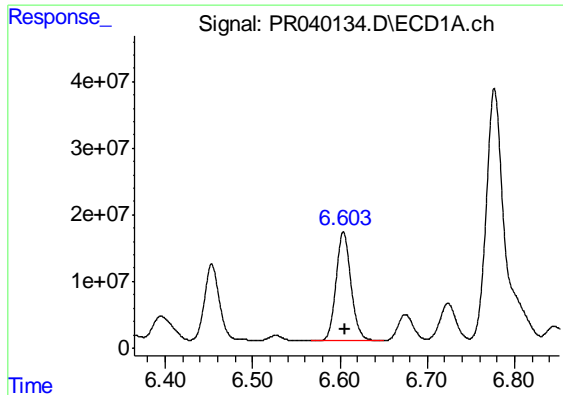
#32 AR-1260-2

R.T.: 6.453 min
 Delta R.T.: 0.000 min
 Response: 138247517
 Conc: 828.45 ng/ml



#32 AR-1260-2

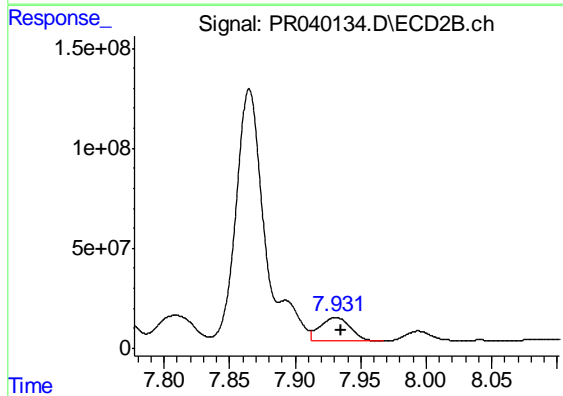
R.T.: 7.581 min
 Delta R.T.: 0.000 min
 Response: 530190433
 Conc: 1083.58 ng/ml



#33 AR-1260-3

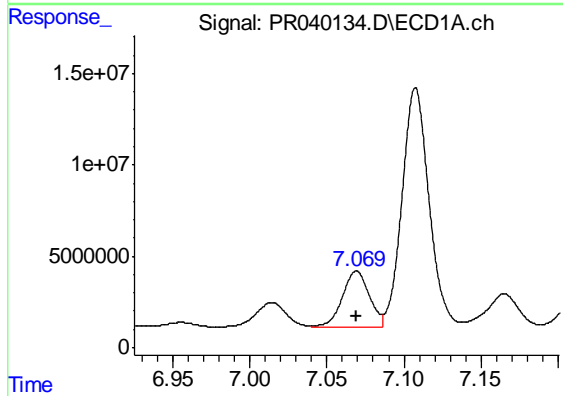
R.T.: 6.604 min
Delta R.T.: -0.002 min
Response: 195138762
Conc: 1308.37 ng/ml

Instrument :
ECD_R
ClientSampled :
S15-01-BDL



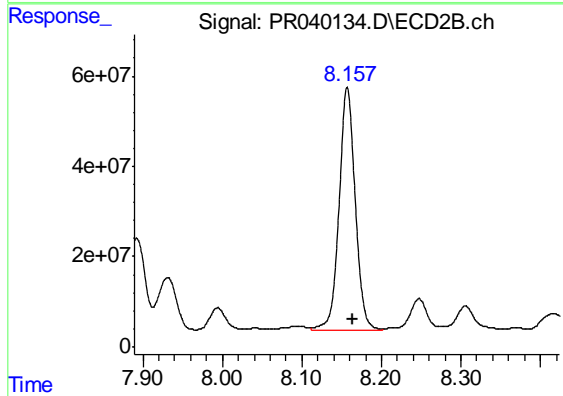
#33 AR-1260-3

R.T.: 7.931 min
Delta R.T.: -0.004 min
Response: 189870682
Conc: 496.08 ng/ml



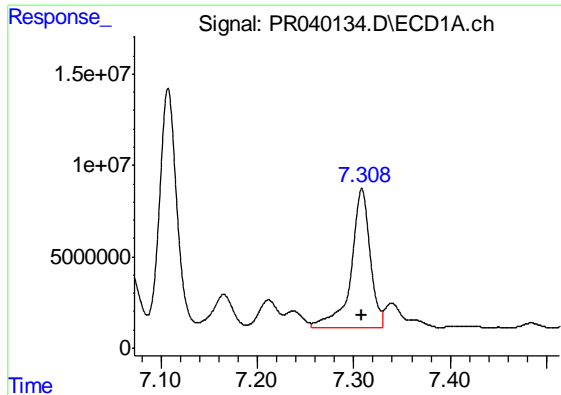
#34 AR-1260-4

R.T.: 7.069 min
Delta R.T.: 0.000 min
Response: 37843532
Conc: 295.98 ng/ml



#34 AR-1260-4

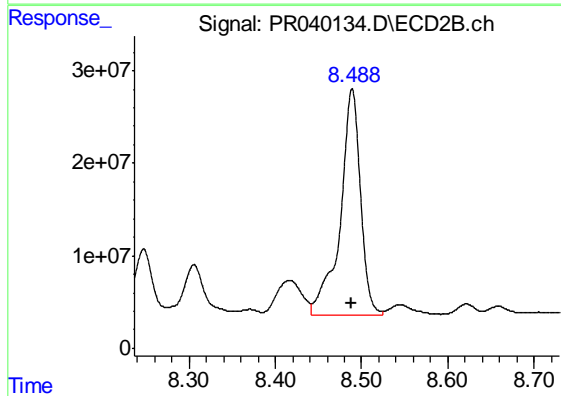
R.T.: 8.157 min
Delta R.T.: -0.006 min
Response: 764071714
Conc: 1742.32 ng/ml



#35 AR-1260-5

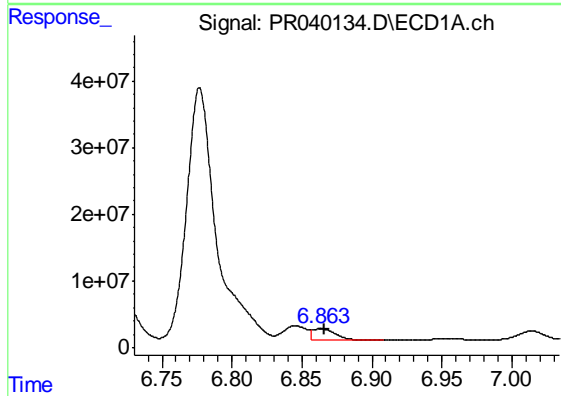
R.T.: 7.309 min
 Delta R.T.: 0.000 min
 Response: 104890185
 Conc: 333.90 ng/ml

Instrument :
 ECD_R
 ClientSampleId :
 S15-01-BDL



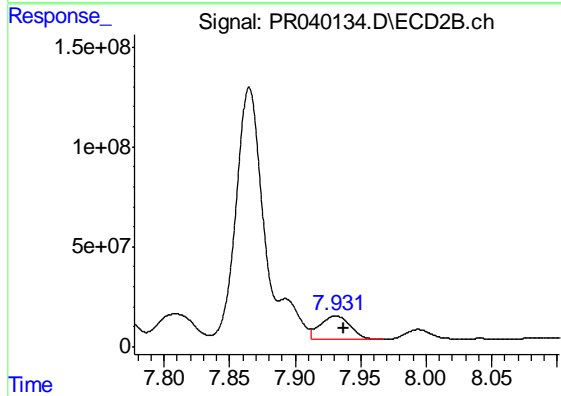
#35 AR-1260-5

R.T.: 8.489 min
 Delta R.T.: 0.000 min
 Response: 397444254
 Conc: 425.68 ng/ml



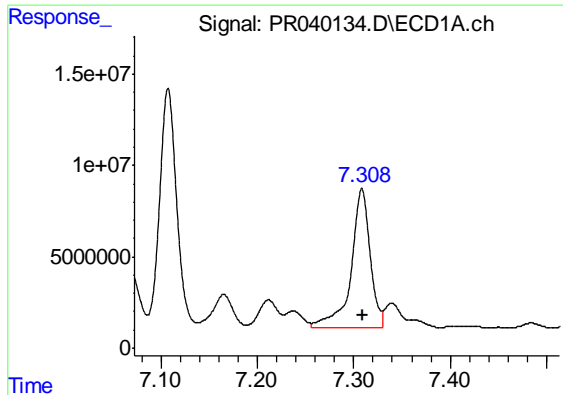
#36 AR-1262-1

R.T.: 6.864 min
 Delta R.T.: -0.003 min
 Response: 19943074
 Conc: 251.83 ng/ml



#36 AR-1262-1

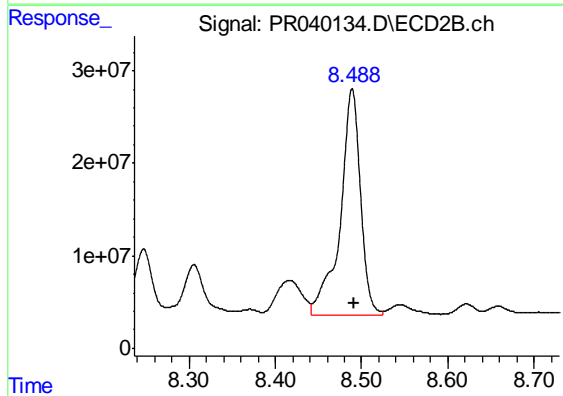
R.T.: 7.931 min
 Delta R.T.: -0.006 min
 Response: 189870682
 Conc: 290.22 ng/ml



#37 AR-1262-2

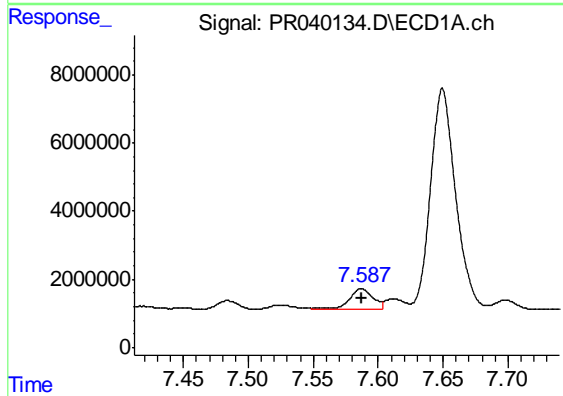
R.T.: 7.309 min
 Delta R.T.: 0.000 min
 Response: 104890185
 Conc: 258.10 ng/ml

Instrument :
 ECD_R
 ClientSampleId :
 S15-01-BDL



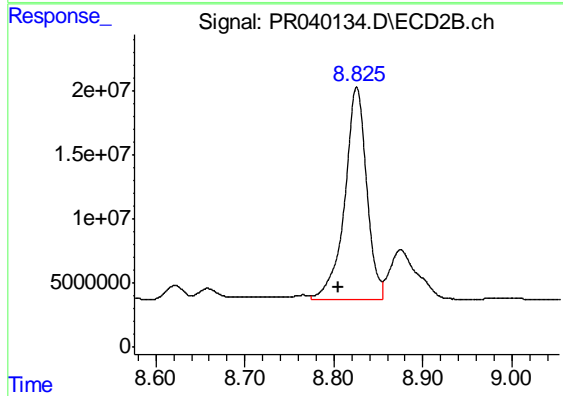
#37 AR-1262-2

R.T.: 8.489 min
 Delta R.T.: -0.002 min
 Response: 397444254
 Conc: 316.35 ng/ml



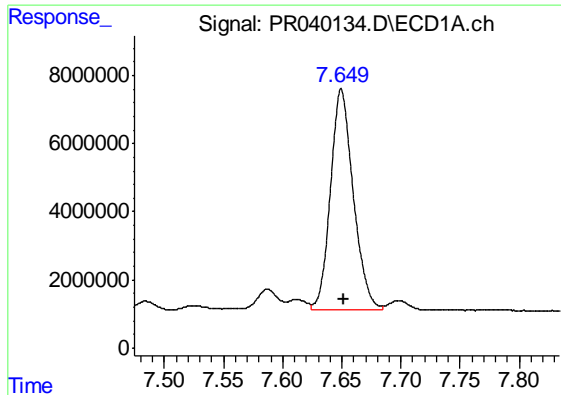
#38 AR-1262-3

R.T.: 7.587 min
 Delta R.T.: 0.000 min
 Response: 7991006
 Conc: 51.83 ng/ml



#38 AR-1262-3

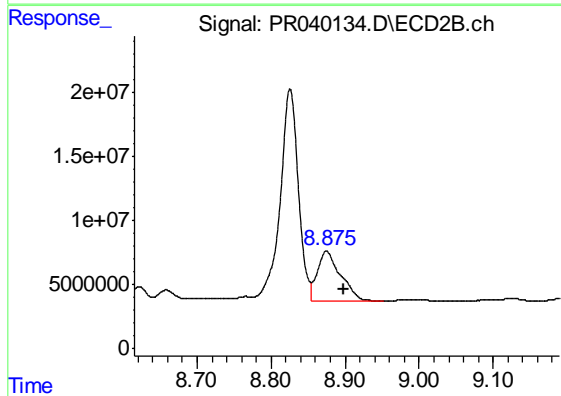
R.T.: 8.826 min
 Delta R.T.: 0.021 min
 Response: 283801781
 Conc: 346.46 ng/ml



#39 AR-1262-4

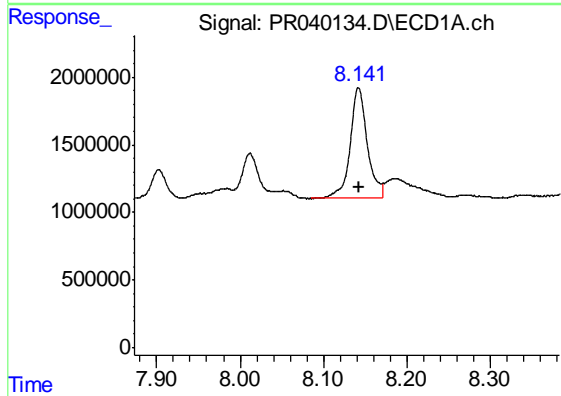
R.T.: 7.650 min
 Delta R.T.: -0.002 min
 Response: 87212072
 Conc: 301.97 ng/ml

Instrument :
 ECD_R
 ClientSampleId :
 S15-01-BDL



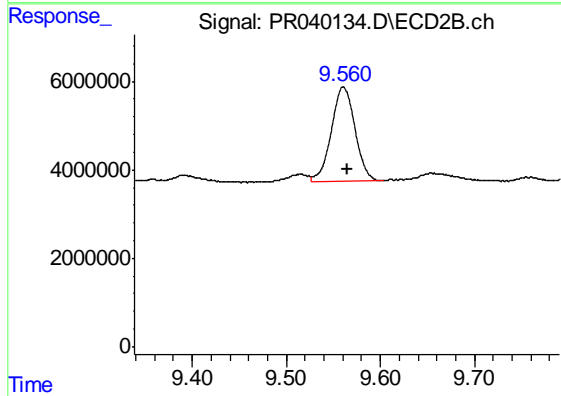
#39 AR-1262-4

R.T.: 8.875 min
 Delta R.T.: -0.023 min
 Response: 84054037
 Conc: 133.74 ng/ml



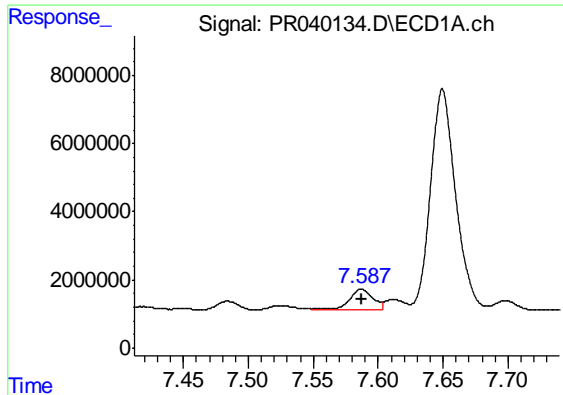
#40 AR-1262-5

R.T.: 8.142 min
 Delta R.T.: 0.000 min
 Response: 11629108
 Conc: 88.70 ng/ml



#40 AR-1262-5

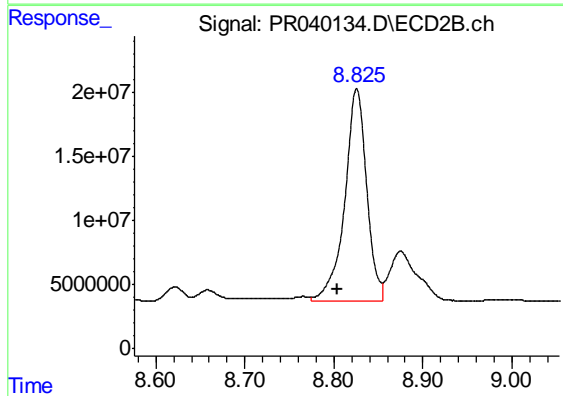
R.T.: 9.561 min
 Delta R.T.: -0.004 min
 Response: 36980536
 Conc: 79.98 ng/ml



#41 AR-1268-1

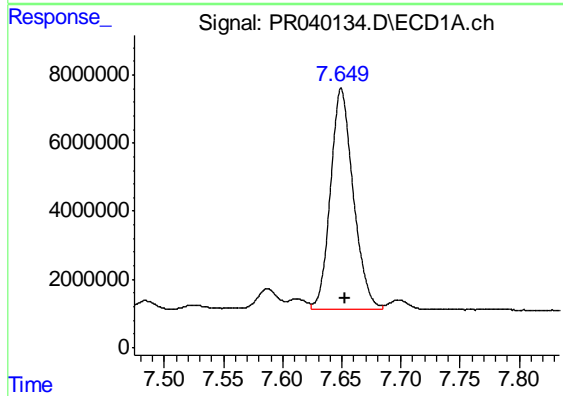
R.T.: 7.587 min
 Delta R.T.: 0.000 min
 Response: 7991006
 Conc: 12.37 ng/ml

Instrument :
 ECD_R
 ClientSampleId :
 S15-01-BDL



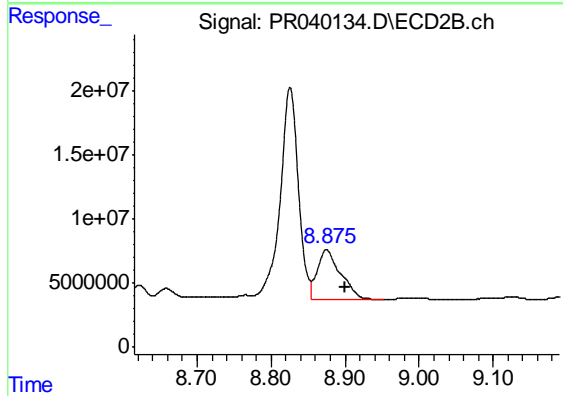
#41 AR-1268-1

R.T.: 8.826 min
 Delta R.T.: 0.022 min
 Response: 283801781
 Conc: 135.98 ng/ml



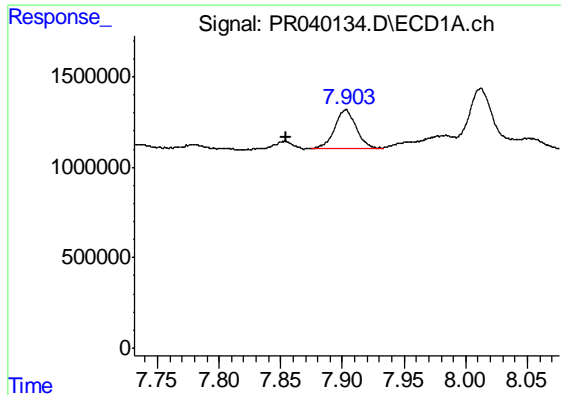
#42 AR-1268-2

R.T.: 7.650 min
 Delta R.T.: -0.003 min
 Response: 87212072
 Conc: 146.80 ng/ml



#42 AR-1268-2

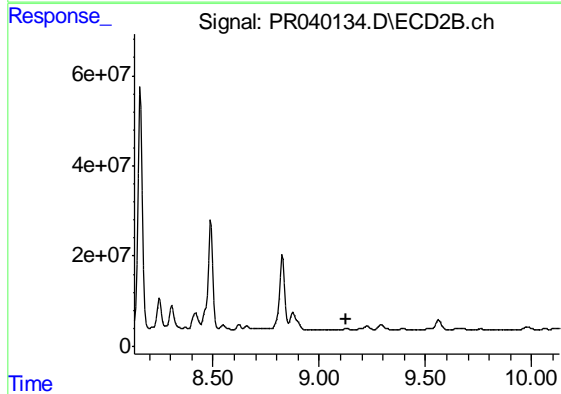
R.T.: 8.875 min
 Delta R.T.: -0.025 min
 Response: 84054037
 Conc: 42.31 ng/ml



#43 AR-1268-3

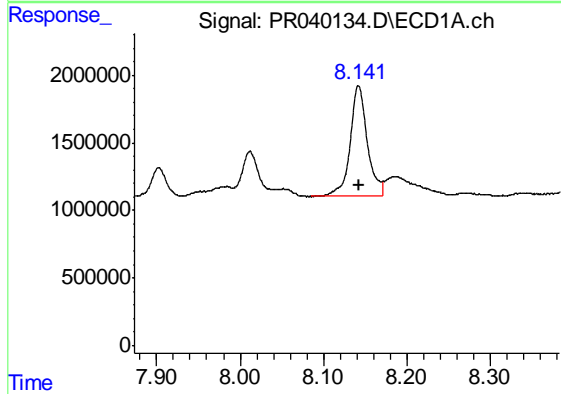
R.T.: 7.903 min
 Delta R.T.: 0.048 min
 Response: 2693961
 Conc: 5.65 ng/ml

Instrument :
 ECD_R
 ClientSampled :
 S15-01-BDL



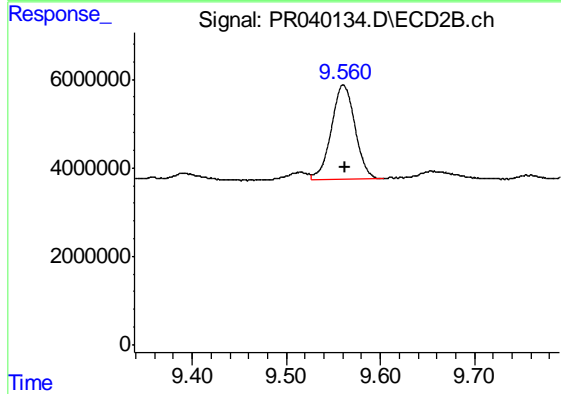
#43 AR-1268-3

R.T.: 0.000 min
 Exp R.T. : 9.130 min
 Response: 0
 Conc: N.D.



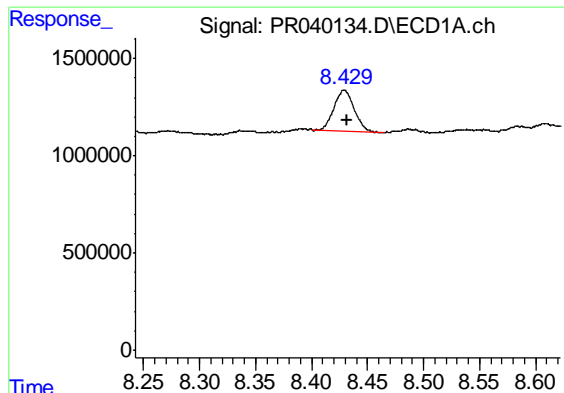
#44 AR-1268-4

R.T.: 8.142 min
 Delta R.T.: 0.000 min
 Response: 11629108
 Conc: 55.44 ng/ml



#44 AR-1268-4

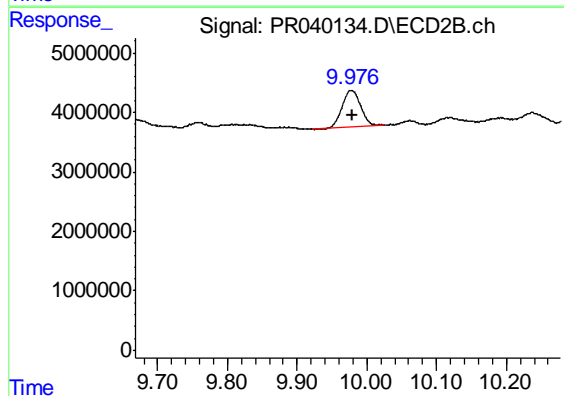
R.T.: 9.561 min
 Delta R.T.: -0.002 min
 Response: 36980536
 Conc: 50.70 ng/ml



#45 AR-1268-5

R.T.: 8.429 min
Delta R.T.: -0.002 min
Response: 2674260
Conc: 1.67 ng/ml

Instrument :
ECD_R
ClientSampleId :
S15-01-BDL



#45 AR-1268-5

R.T.: 9.978 min
Delta R.T.: -0.002 min
Response: 11243150
Conc: 1.89 ng/ml