

Data Path : Z:\pestpcbsrv\HPCHEM1\ECD_R\Data\PR080619\
 Data File : PR040168.D
 Signal(s) : Signal #1: ECD1A.ch Signal #2: ECD2B.ch
 Acq On : 05 Aug 2019 14:23
 Operator : SM\AJ
 Sample : K4151-09RE
 Misc :
 ALS Vial : 12 Sample Multiplier: 1

Instrument :
 ECD_R
 ClientSampleId :
 DUP-5RE

Integration File signal 1: autoint1.e
 Integration File signal 2: autoint2.e
 Quant Time: Aug 05 15:20:18 2019
 Quant Method : Z:\pestpcbsrv\HPCHEM1\ECD_R\Method\PR080519.M
 Quant Title : GC EXTRACTABLES
 QLast Update : Mon Aug 05 03:12:12 2019
 Response via : Initial Calibration
 Integrator: ChemStation

Volume Inj. : 2 µl
 Signal #1 Phase : ZB-MR1 Signal #2 Phase: ZB-MR2
 Signal #1 Info : 30Mx0.32mmx 0.50µ Signal #2 Info : 30M x 0.32mm x 0.25µm

Compound	RT#1	RT#2	Resp#1	Resp#2	ng/ml	ng/ml

System Monitoring Compounds						
1) SA Tetrachlo...	3.750	4.594	34912381	150.8E6	14.275	14.471
2) SA Decachlor...	8.681	10.319	12958823	55023353	5.338m	5.795m
Target Compounds						
26) L6 AR-1254-1	5.602	6.589	9955036	35156178	53.320	76.908 #
27) L6 AR-1254-2	5.744	6.805	10218582	75588583	63.680	104.213 #
28) L6 AR-1254-3	6.145	7.171	20729091	70791956	75.919	87.210
29) L6 AR-1254-4	6.367	7.452	13235752	47164876	63.999	77.532
30) L6 AR-1254-5	6.778	7.867	54379949	80290135	224.949	126.135 #

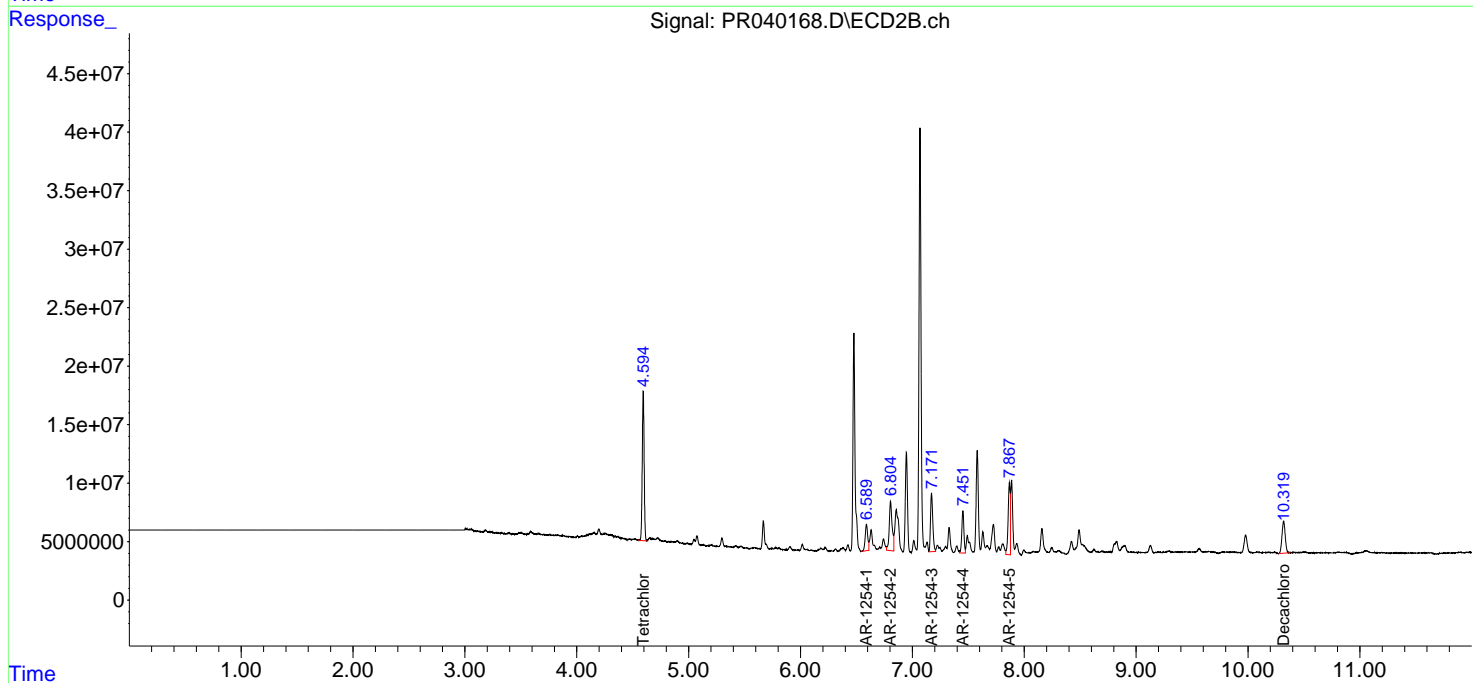
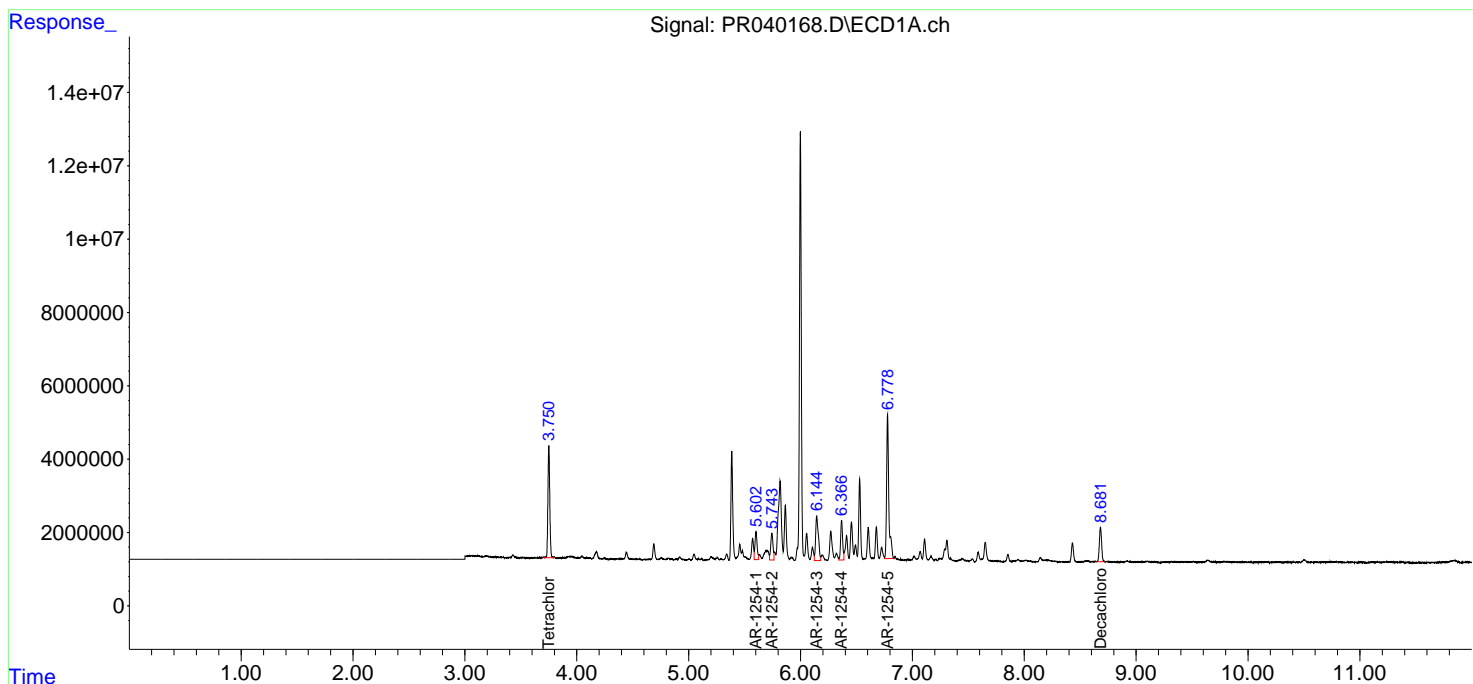
(f)=RT Delta > 1/2 Window (#)=Amounts differ by > 25% (m)=manual int.

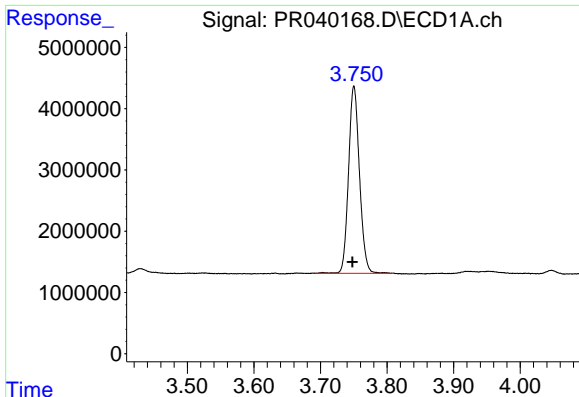
Data Path : Z:\pestpcbsrv\HPCHEM1\ECD_R\Data\PR080619\
 Data File : PR040168.D
 Signal(s) : Signal #1: ECD1A.ch Signal #2: ECD2B.ch
 Acq On : 05 Aug 2019 14:23
 Operator : SM\AJ
 Sample : K4151-09RE
 Misc :
 ALS Vial : 12 Sample Multiplier: 1

Instrument :
 ECD_R
 ClientSampled :
 DUP-5RE

Integration File signal 1: autoint1.e
 Integration File signal 2: autoint2.e
 Quant Time: Aug 05 15:20:18 2019
 Quant Method : Z:\pestpcbsrv\HPCHEM1\ECD_R\Method\PR080519.M
 Quant Title : GC EXTRACTABLES
 QLast Update : Mon Aug 05 03:12:12 2019
 Response via : Initial Calibration
 Integrator: ChemStation

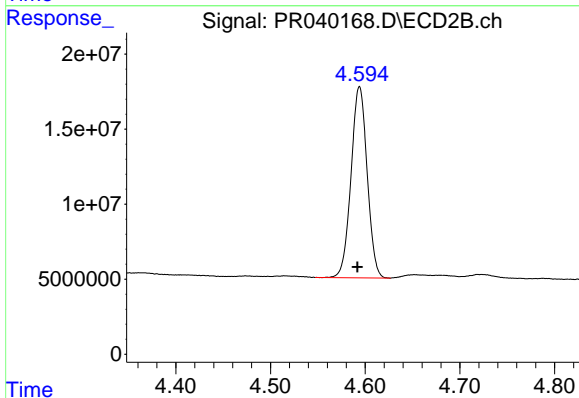
Volume Inj. : 2 µl
 Signal #1 Phase : ZB-MR1 Signal #2 Phase: ZB-MR2
 Signal #1 Info : 30Mx0.32mmx 0.50µ Signal #2 Info : 30M x 0.32mm x 0.25µm



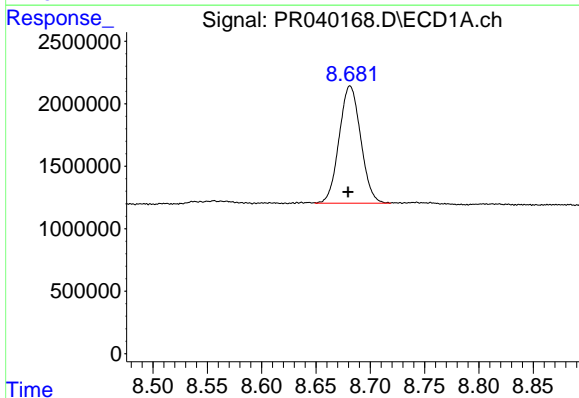


#1 Tetrachloro-m-xylene
 R.T.: 3.750 min
 Delta R.T.: 0.002 min
 Response: 34912381
 Conc: 14.28 ng/ml

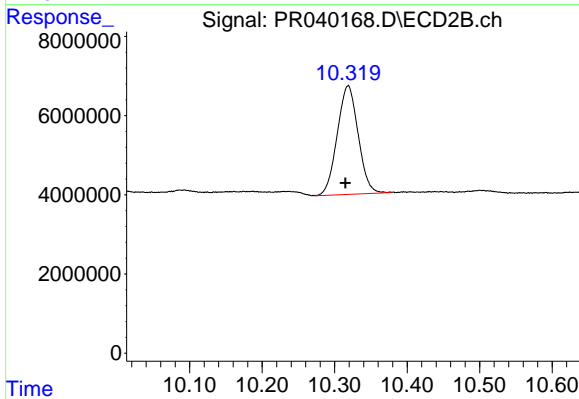
Instrument :
 ECD_R
 ClientSampleId :
 DUP-5RE



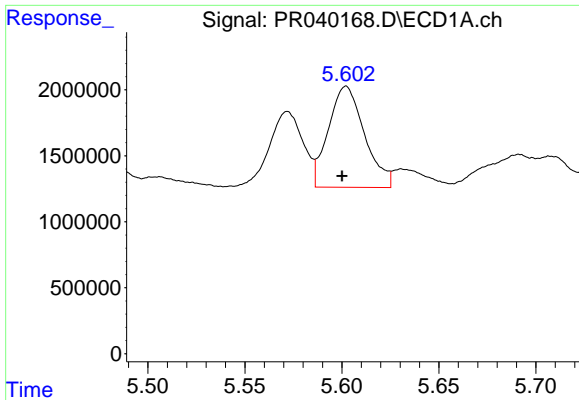
#1 Tetrachloro-m-xylene
 R.T.: 4.594 min
 Delta R.T.: 0.002 min
 Response: 150822642
 Conc: 14.47 ng/ml



#2 Decachlorobiphenyl
 R.T.: 8.681 min
 Delta R.T.: 0.002 min
 Response: 12958823
 Conc: 5.34 ng/ml m



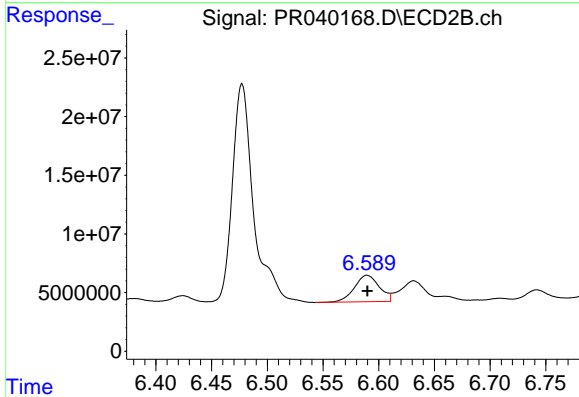
#2 Decachlorobiphenyl
 R.T.: 10.319 min
 Delta R.T.: 0.004 min
 Response: 55023353
 Conc: 5.80 ng/ml m



#26 AR-1254-1

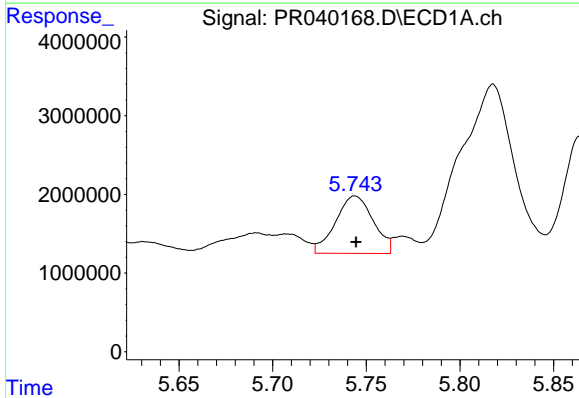
R.T.: 5.602 min
 Delta R.T.: 0.002 min
 Response: 9955036
 Conc: 53.32 ng/ml

Instrument :
 ECD_R
 ClientSampleId :
 DUP-5RE



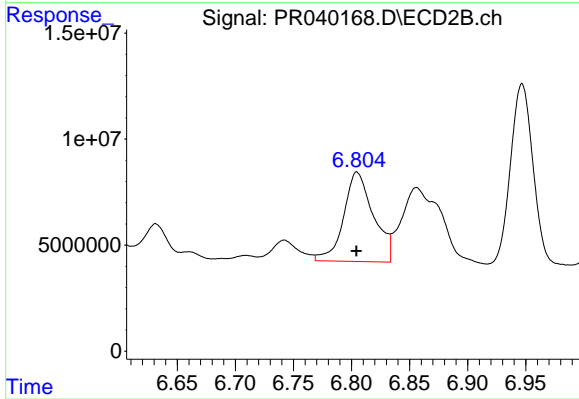
#26 AR-1254-1

R.T.: 6.589 min
 Delta R.T.: 0.000 min
 Response: 35156178
 Conc: 76.91 ng/ml



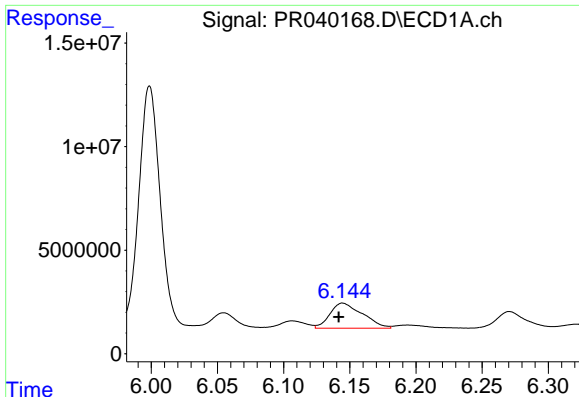
#27 AR-1254-2

R.T.: 5.744 min
 Delta R.T.: 0.000 min
 Response: 10218582
 Conc: 63.68 ng/ml



#27 AR-1254-2

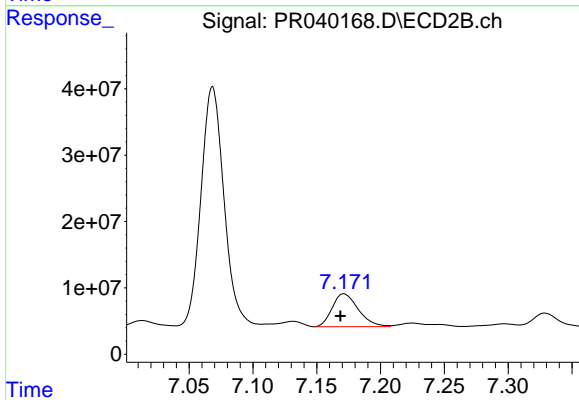
R.T.: 6.805 min
 Delta R.T.: 0.000 min
 Response: 75588583
 Conc: 104.21 ng/ml



#28 AR-1254-3

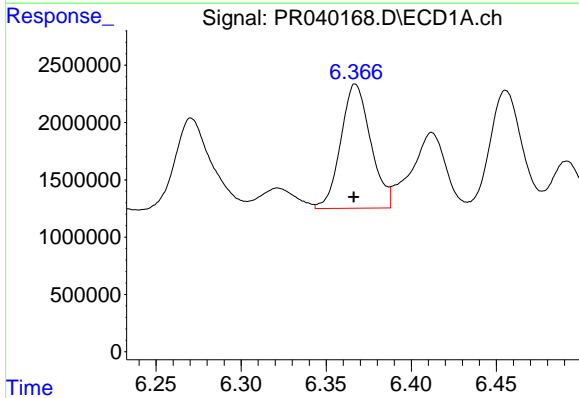
R.T.: 6.145 min
 Delta R.T.: 0.003 min
 Response: 20729091
 Conc: 75.92 ng/ml

Instrument :
 ECD_R
 ClientSampled :
 DUP-5RE



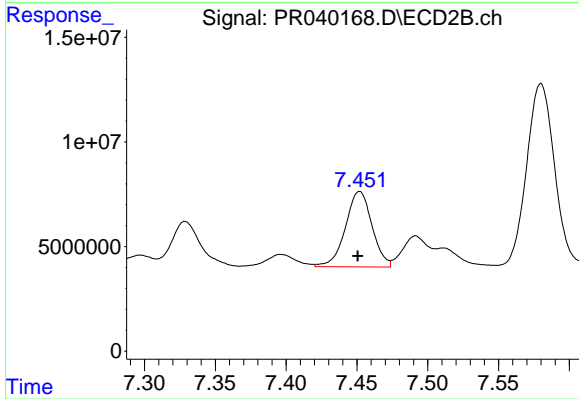
#28 AR-1254-3

R.T.: 7.171 min
 Delta R.T.: 0.003 min
 Response: 70791956
 Conc: 87.21 ng/ml



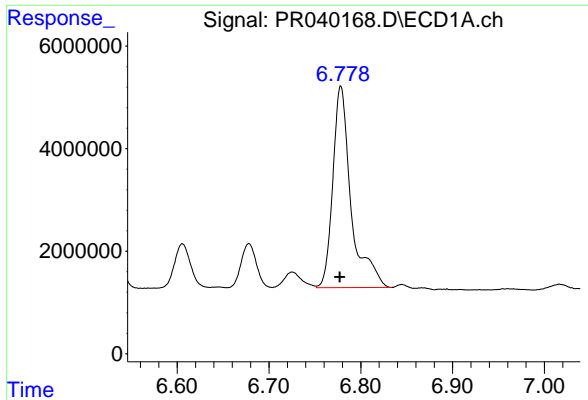
#29 AR-1254-4

R.T.: 6.367 min
 Delta R.T.: 0.000 min
 Response: 13235752
 Conc: 64.00 ng/ml



#29 AR-1254-4

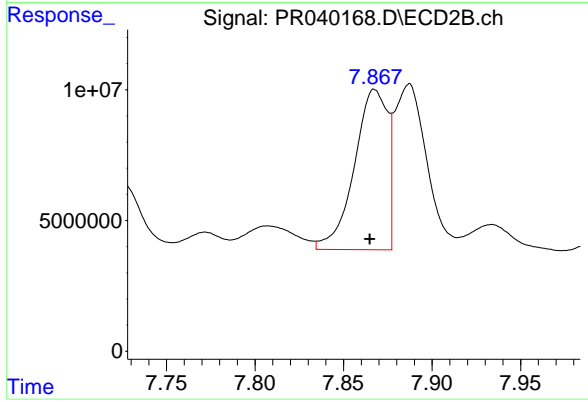
R.T.: 7.452 min
 Delta R.T.: 0.001 min
 Response: 47164876
 Conc: 77.53 ng/ml



#30 AR-1254-5

R.T.: 6.778 min
Delta R.T.: 0.001 min
Response: 54379949
Conc: 224.95 ng/ml

Instrument :
ECD_R
ClientSampleId :
DUP-5RE



#30 AR-1254-5

R.T.: 7.867 min
Delta R.T.: 0.003 min
Response: 80290135
Conc: 126.13 ng/ml