

Data Path : Z:\pestpcbsrv\HPCHEM1\ECD_R\Data\PR080619\
 Data File : PR040173.D
 Signal(s) : Signal #1: ECD1A.ch Signal #2: ECD2B.ch
 Acq On : 05 Aug 2019 17:32
 Operator : SM\AJ
 Sample : AR1660CCC500
 Misc :
 ALS Vial : 3 Sample Multiplier: 1

Instrument :
 ECD_R
ClientSampleId :
 AR1660CCC500

Manual Integrations
APPROVED

Ankita
 8/6/2019 2:27:51 PM

Integration File signal 1: autoint1.e
 Integration File signal 2: autoint2.e
 Quant Time: Aug 05 17:45:36 2019
 Quant Method : Z:\pestpcbsrv\HPCHEM1\ECD_R\Method\PR080519.M
 Quant Title : GC EXTRACTABLES
 QLast Update : Mon Aug 05 03:12:12 2019
 Response via : Initial Calibration
 Integrator: ChemStation

Volume Inj. : 2 µl
 Signal #1 Phase : ZB-MR2 Signal #2 Phase: ZB-MR2
 Signal #1 Info : 30Mx0.32mmx 0.50µ Signal #2 Info : 30M x 0.32mm x 0.25µm

Compound	RT#1	RT#2	Resp#1	Resp#2	ng/ml	ng/ml

System Monitoring Compounds						
1) SA Tetrachlo...	3.753	4.596	83092295	337.5E6	33.975	32.382
2) SA Decachlor...	8.684	10.319	133.3E6	511.0E6	54.910	53.819
Target Compounds						
3) L1 AR-1016-1	4.819	5.750	35485260	139.6E6	437.509	410.182
4) L1 AR-1016-2	4.835	5.772	56808202	201.9E6	421.493m	409.700
5) L1 AR-1016-3	5.009	5.834	28095359	121.8E6	443.934	417.105
6) L1 AR-1016-4	5.050	5.933	22743165	102.4E6	445.456	420.129
7) L1 AR-1016-5	5.258	6.221	31317146	98436258	463.281m	431.089
31) L7 AR-1260-1	6.272	7.331	62826875	189.5E6	477.887	467.432
32) L7 AR-1260-2	6.457	7.584	79571957	230.7E6	476.836	471.521
33) L7 AR-1260-3	6.609	7.938	73534042	180.4E6	493.033	471.271
34) L7 AR-1260-4	7.073	8.167	63472637	210.3E6	496.437	479.564
35) L7 AR-1260-5	7.312	8.492	157.6E6	468.6E6	501.845	501.868

(f)=RT Delta > 1/2 Window (#)=Amounts differ by > 25% (m)=manual int.

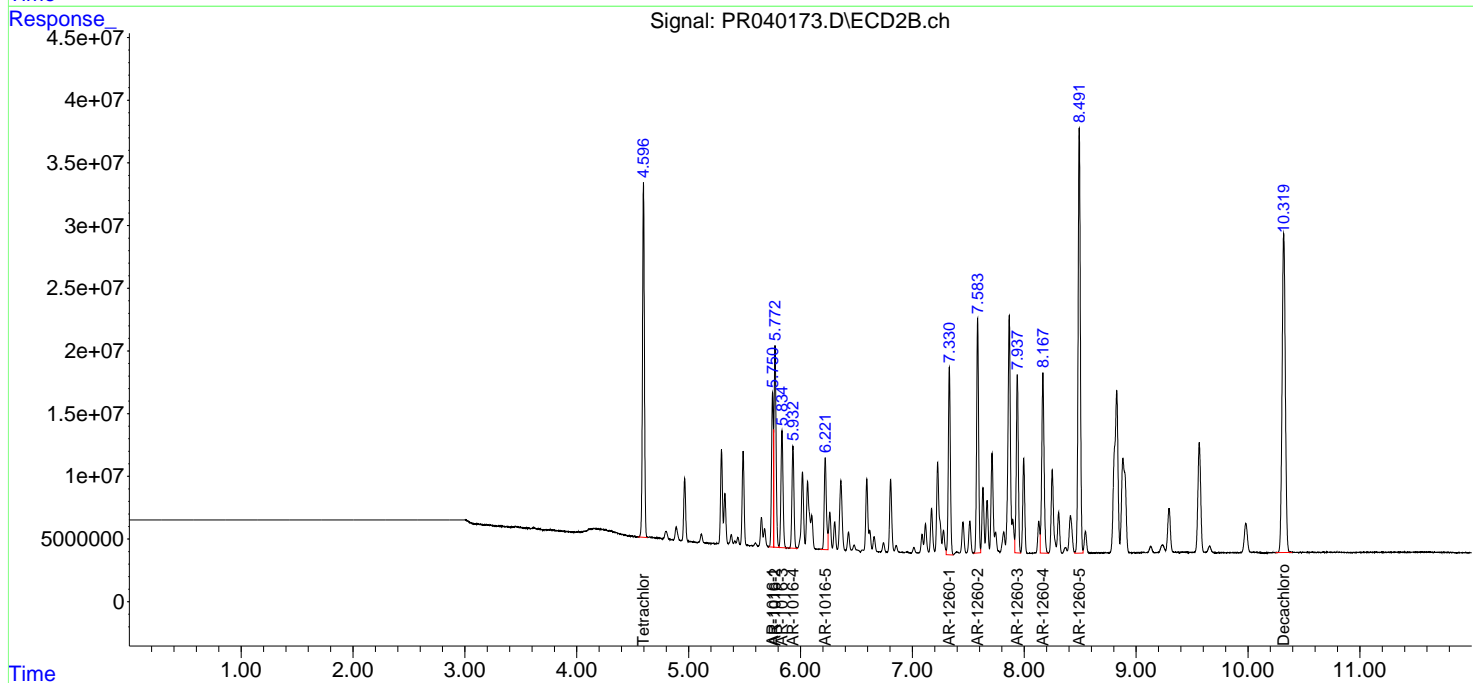
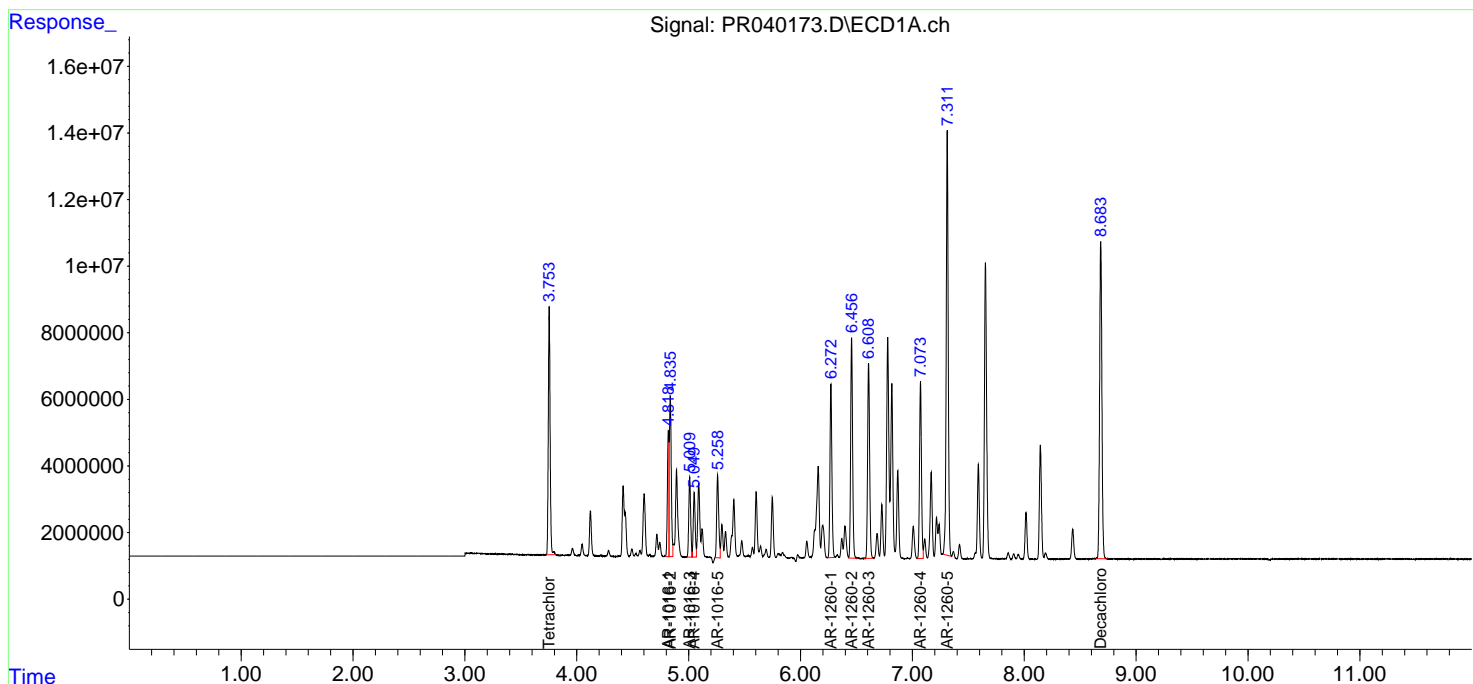
Data Path : Z:\pestpcbsrv\HPCHEM1\ECD_R\Data\PR080619\
 Data File : PR040173.D
 Signal(s) : Signal #1: ECD1A.ch Signal #2: ECD2B.ch
 Acq On : 05 Aug 2019 17:32
 Operator : SM\AJ
 Sample : AR1660CCC500
 Misc :
 ALS Vial : 3 Sample Multiplier: 1

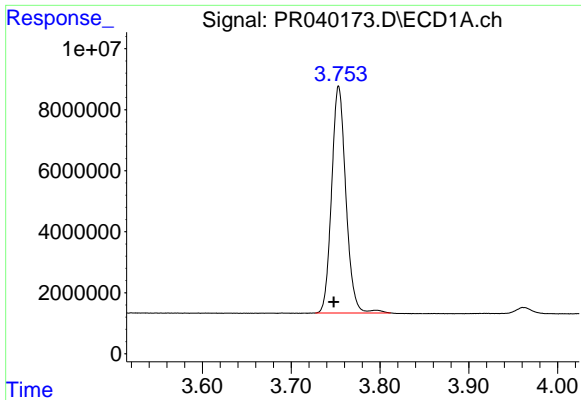
Instrument :
 ECD_R
 ClientSampled :
 AR1660CCC500

Manual Integrations
APPROVED
 Ankita
 8/6/2019 2:27:51 PM

Integration File signal 1: autoint1.e
 Integration File signal 2: autoint2.e
 Quant Time: Aug 05 17:45:36 2019
 Quant Method : Z:\pestpcbsrv\HPCHEM1\ECD_R\Method\PR080519.M
 Quant Title : GC EXTRACTABLES
 QLast Update : Mon Aug 05 03:12:12 2019
 Response via : Initial Calibration
 Integrator: ChemStation

Volume Inj. : 2 µl
 Signal #1 Phase : ZB-MR1 Signal #2 Phase: ZB-MR2
 Signal #1 Info : 30Mx0.32mmx 0.50µ Signal #2 Info : 30M x 0.32mm x 0.25µm





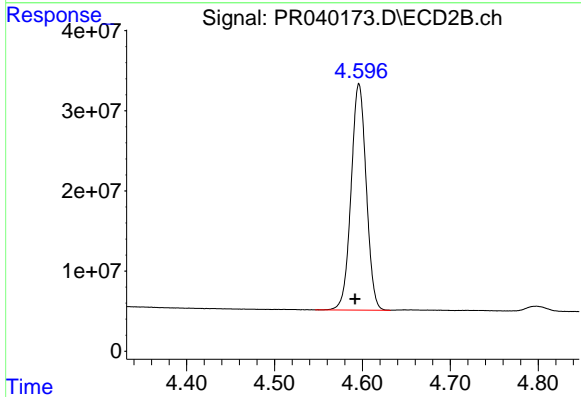
#1 Tetrachloro-m-xylene

R.T.: 3.753 min
Delta R.T.: 0.005 min
Response: 83092295
Conc: 33.97 ng/ml

Instrument :
ECD_R
ClientSampleId :
AR1660CCC500

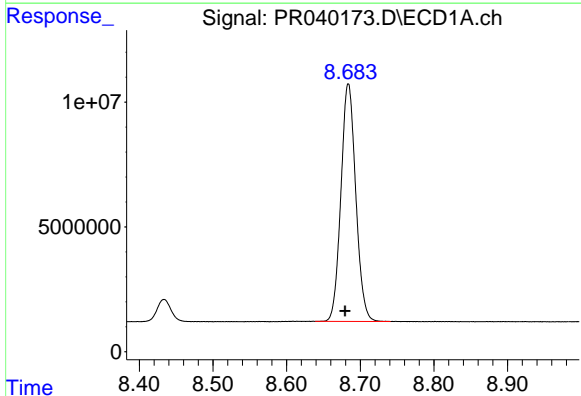
Manual Integrations
APPROVED

Ankita
8/6/2019 2:27:51 PM



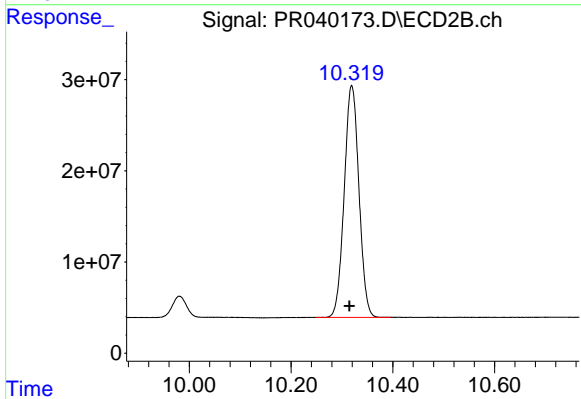
#1 Tetrachloro-m-xylene

R.T.: 4.596 min
Delta R.T.: 0.004 min
Response: 337486184
Conc: 32.38 ng/ml



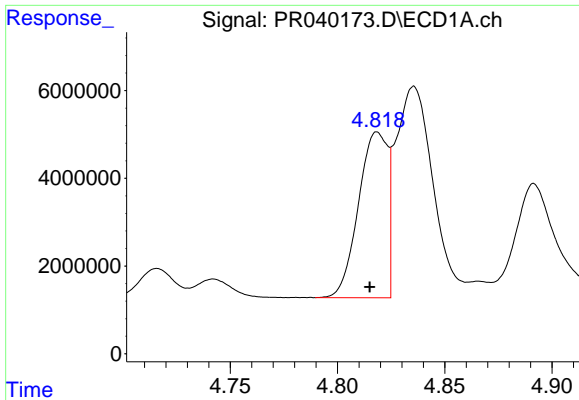
#2 Decachlorobiphenyl

R.T.: 8.684 min
Delta R.T.: 0.004 min
Response: 133292961
Conc: 54.91 ng/ml



#2 Decachlorobiphenyl

R.T.: 10.319 min
Delta R.T.: 0.004 min
Response: 510996390
Conc: 53.82 ng/ml

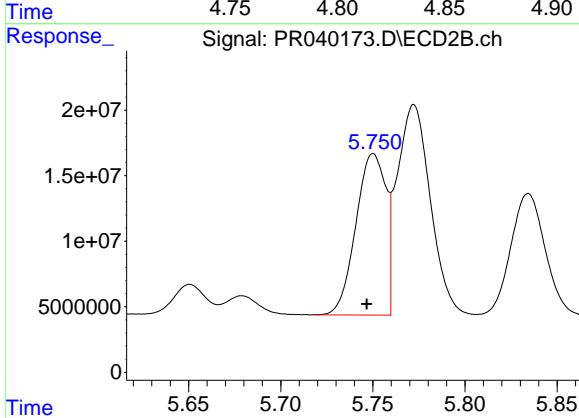


#3 AR-1016-1

R.T.: 4.819 min
 Delta R.T.: 0.004 min
 Response: 35485260
 Conc: 437.51 ng/ml

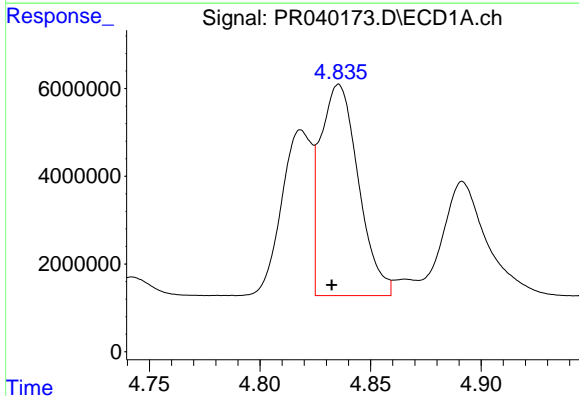
Instrument :
 ECD_R
ClientSampled :
 AR1660CCC500

Manual Integrations
APPROVED
 Ankita
 8/6/2019 2:27:51 PM



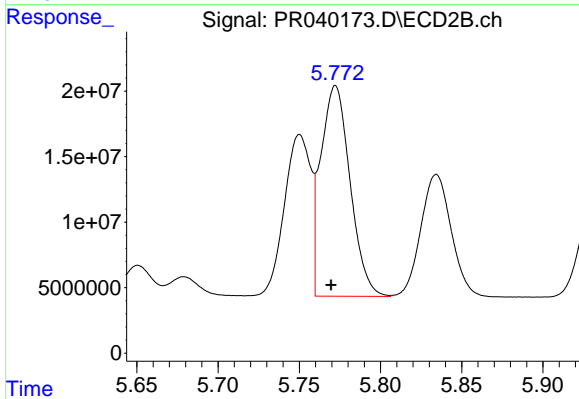
#3 AR-1016-1

R.T.: 5.750 min
 Delta R.T.: 0.004 min
 Response: 13955473
 Conc: 410.18 ng/ml



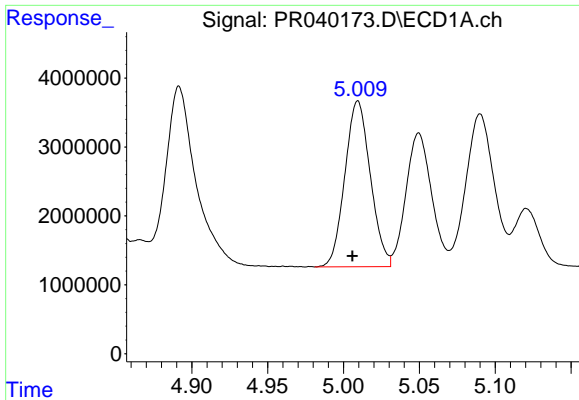
#4 AR-1016-2

R.T.: 4.835 min
 Delta R.T.: 0.003 min
 Response: 56808202
 Conc: 421.49 ng/ml m



#4 AR-1016-2

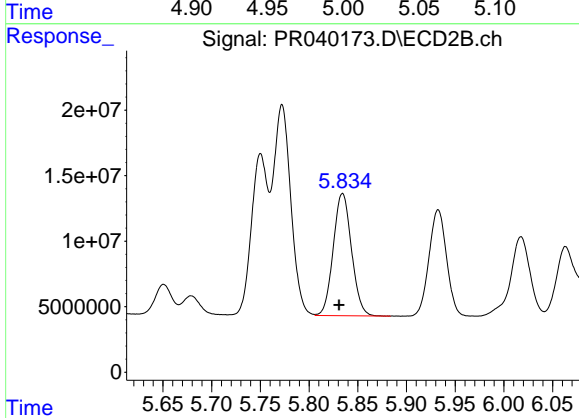
R.T.: 5.772 min
 Delta R.T.: 0.003 min
 Response: 201946897
 Conc: 409.70 ng/ml



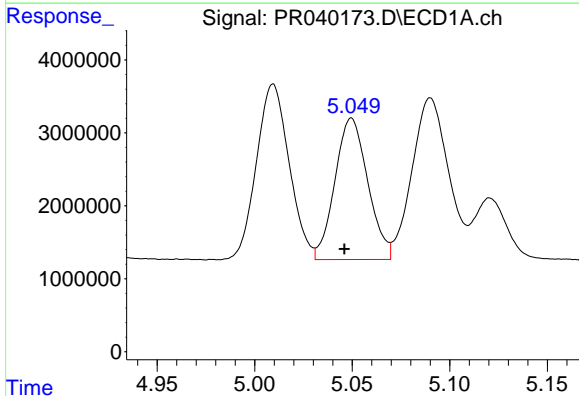
#5 AR-1016-3
 R.T.: 5.009 min
 Delta R.T.: 0.004 min
 Response: 28095359
 Conc: 443.93 ng/ml

Instrument :
 ECD_R
ClientSampled :
 AR1660CCC500

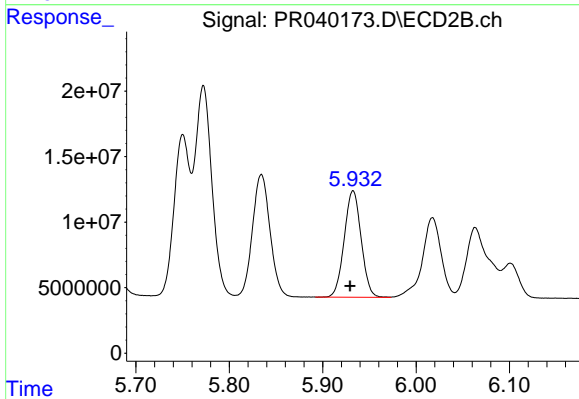
Manual Integrations
APPROVED
 Ankita
 8/6/2019 2:27:51 PM



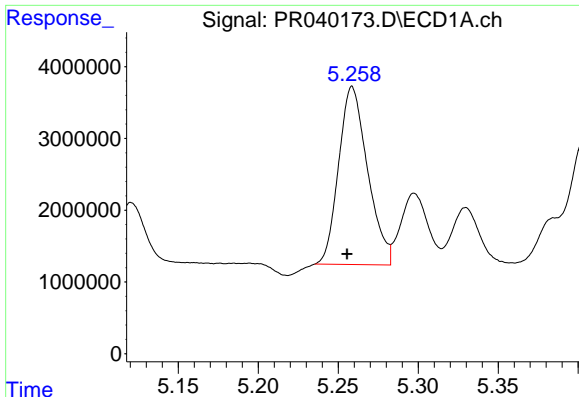
#5 AR-1016-3
 R.T.: 5.834 min
 Delta R.T.: 0.004 min
 Response: 121797661
 Conc: 417.10 ng/ml



#6 AR-1016-4
 R.T.: 5.050 min
 Delta R.T.: 0.004 min
 Response: 22743165
 Conc: 445.46 ng/ml



#6 AR-1016-4
 R.T.: 5.933 min
 Delta R.T.: 0.003 min
 Response: 102359337
 Conc: 420.13 ng/ml



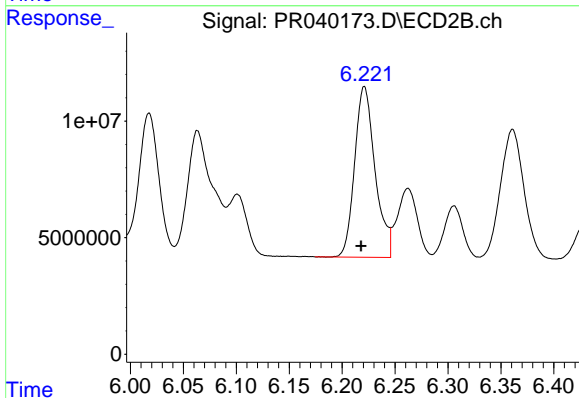
#7 AR-1016-5

R.T.: 5.258 min
 Delta R.T.: 0.003 min
 Response: 31317146
 Conc: 463.28 ng/ml m

Instrument :
 ECD_R
 ClientSampled :
 AR1660CCC500

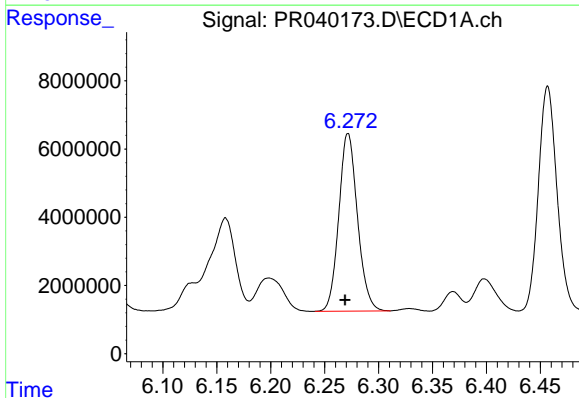
Manual Integrations
 APPROVED

Ankita
 8/6/2019 2:27:51 PM



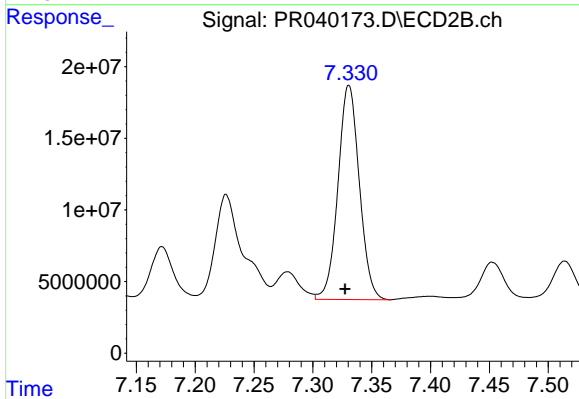
#7 AR-1016-5

R.T.: 6.221 min
 Delta R.T.: 0.003 min
 Response: 98436258
 Conc: 431.09 ng/ml



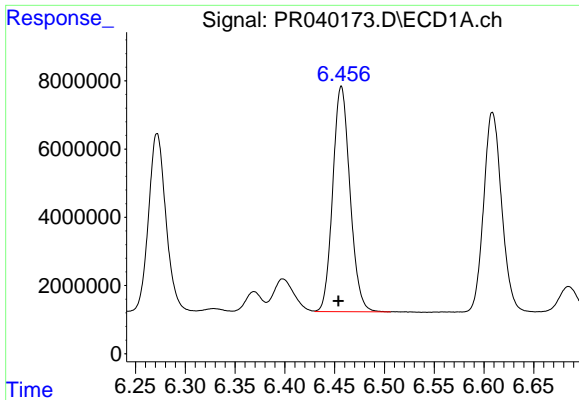
#31 AR-1260-1

R.T.: 6.272 min
 Delta R.T.: 0.003 min
 Response: 62826875
 Conc: 477.89 ng/ml



#31 AR-1260-1

R.T.: 7.331 min
 Delta R.T.: 0.003 min
 Response: 189468937
 Conc: 467.43 ng/ml

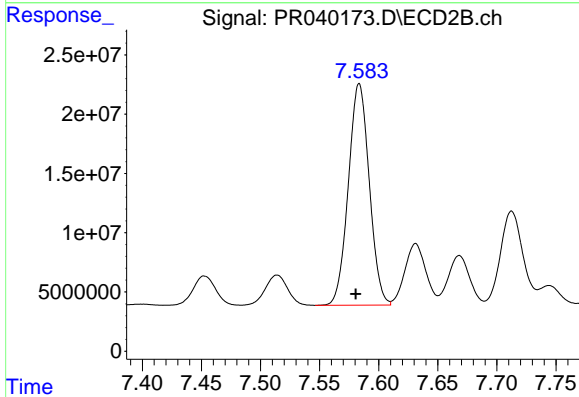


#32 AR-1260-2

R.T.: 6.457 min
 Delta R.T.: 0.003 min
 Response: 79571957
 Conc: 476.84 ng/ml

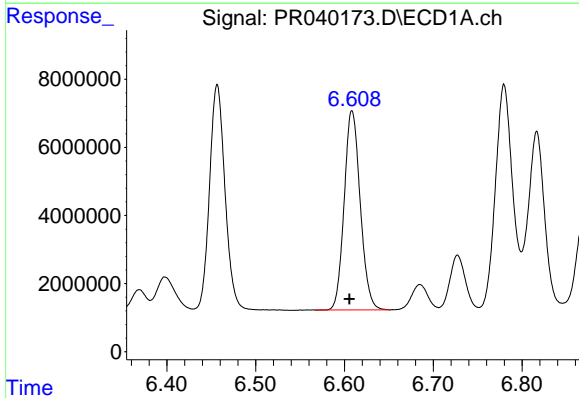
Instrument :
 ECD_R
 ClientSampled :
 AR1660CCC500

Manual Integrations
 APPROVED
 Ankita
 8/6/2019 2:27:51 PM



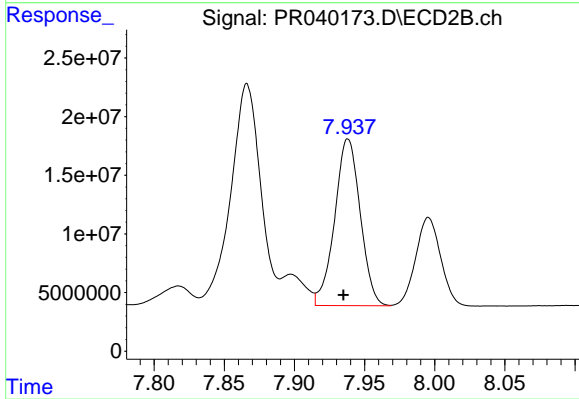
#32 AR-1260-2

R.T.: 7.584 min
 Delta R.T.: 0.003 min
 Response: 230714073
 Conc: 471.52 ng/ml



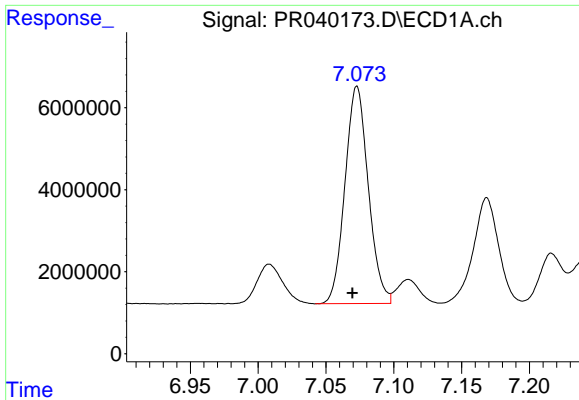
#33 AR-1260-3

R.T.: 6.609 min
 Delta R.T.: 0.003 min
 Response: 73534042
 Conc: 493.03 ng/ml



#33 AR-1260-3

R.T.: 7.938 min
 Delta R.T.: 0.003 min
 Response: 180374764
 Conc: 471.27 ng/ml

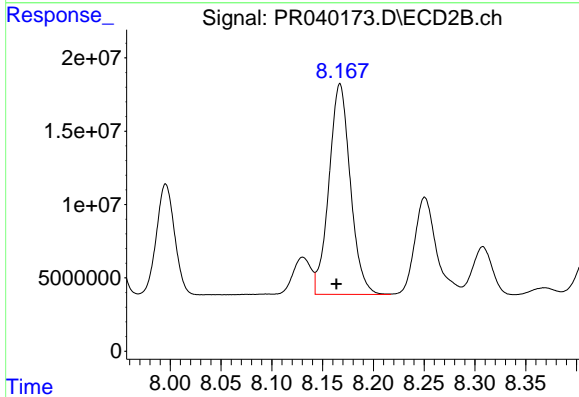


#34 AR-1260-4

R.T.: 7.073 min
 Delta R.T.: 0.003 min
 Response: 63472637
 Conc: 496.44 ng/ml

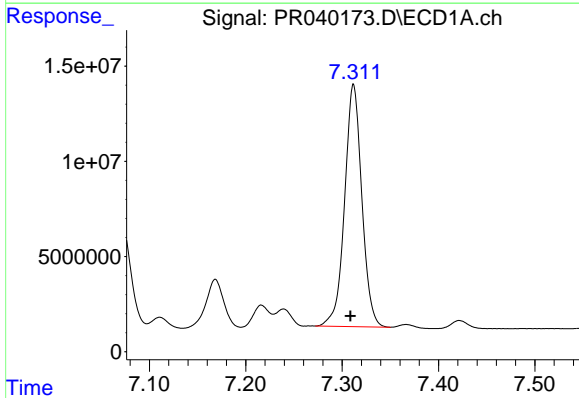
Instrument :
 ECD_R
ClientSampled :
 AR1660CCC500

Manual Integrations
APPROVED
 Ankita
 8/6/2019 2:27:51 PM



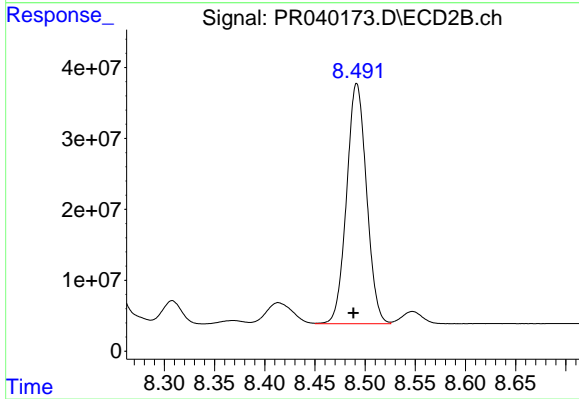
#34 AR-1260-4

R.T.: 8.167 min
 Delta R.T.: 0.004 min
 Response: 210306088
 Conc: 479.56 ng/ml



#35 AR-1260-5

R.T.: 7.312 min
 Delta R.T.: 0.003 min
 Response: 157646249
 Conc: 501.84 ng/ml



#35 AR-1260-5

R.T.: 8.492 min
 Delta R.T.: 0.003 min
 Response: 468573066
 Conc: 501.87 ng/ml