

Data Path : Z:\pestpcbsrv\HPCHEM1\ECD_R\Data\PR080819\
 Data File : PR040219.D
 Signal(s) : Signal #1: ECD1A.ch Signal #2: ECD2B.ch
 Acq On : 07 Aug 2019 22:13
 Operator : SM\AJ
 Sample : AR1254ICC500
 Misc :
 ALS Vial : 12 Sample Multiplier: 1

Instrument :
 ECD_R
 ClientSampleId :
 AR1254ICC500

Integration File signal 1: autoint1.e
 Integration File signal 2: autoint2.e
 Quant Time: Aug 08 06:54:43 2019
 Quant Method : Z:\pestpcbsrv\HPCHEM1\ECD_R\Method\PR080819.M
 Quant Title : GC EXTRACTABLES
 QLast Update : Thu Aug 08 06:54:19 2019
 Response via : Initial Calibration
 Integrator: ChemStation

Volume Inj. : 2 µl
 Signal #1 Phase : ZB-MR1 Signal #2 Phase: ZB-MR2
 Signal #1 Info : 30Mx0.32mmx 0.50µ Signal #2 Info : 30M x 0.32mm x 0.25µm

Compound	RT#1	RT#2	Resp#1	Resp#2	ng/ml	ng/ml

System Monitoring Compounds						
1) SA Tetrachlo...	3.755	4.598	62795937	284.8E6	50.000	50.000
2) SA Decachlor...	8.684	10.320	123.6E6	473.5E6	50.000	50.000
Target Compounds						
26) L6 AR-1254-1	5.605	6.594	61193553	158.9E6	500.000	500.000
27) L6 AR-1254-2	5.749	6.809	53156984	254.5E6	500.000	500.000
28) L6 AR-1254-3	6.146	7.173	94457102	292.5E6	500.000	500.000
29) L6 AR-1254-4	6.370	7.455	64642901	226.5E6	500.000	500.000
30) L6 AR-1254-5	6.782	7.869	91237177	251.8E6	500.000	500.000

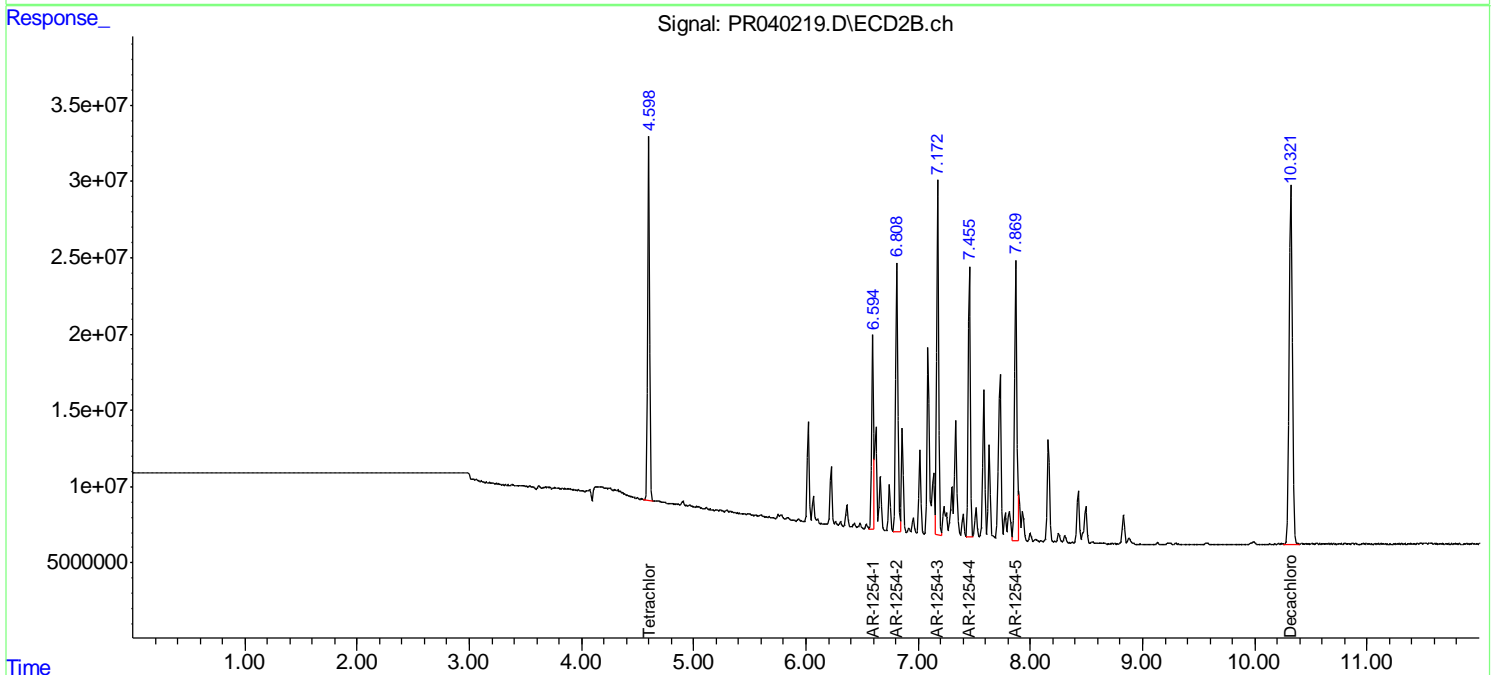
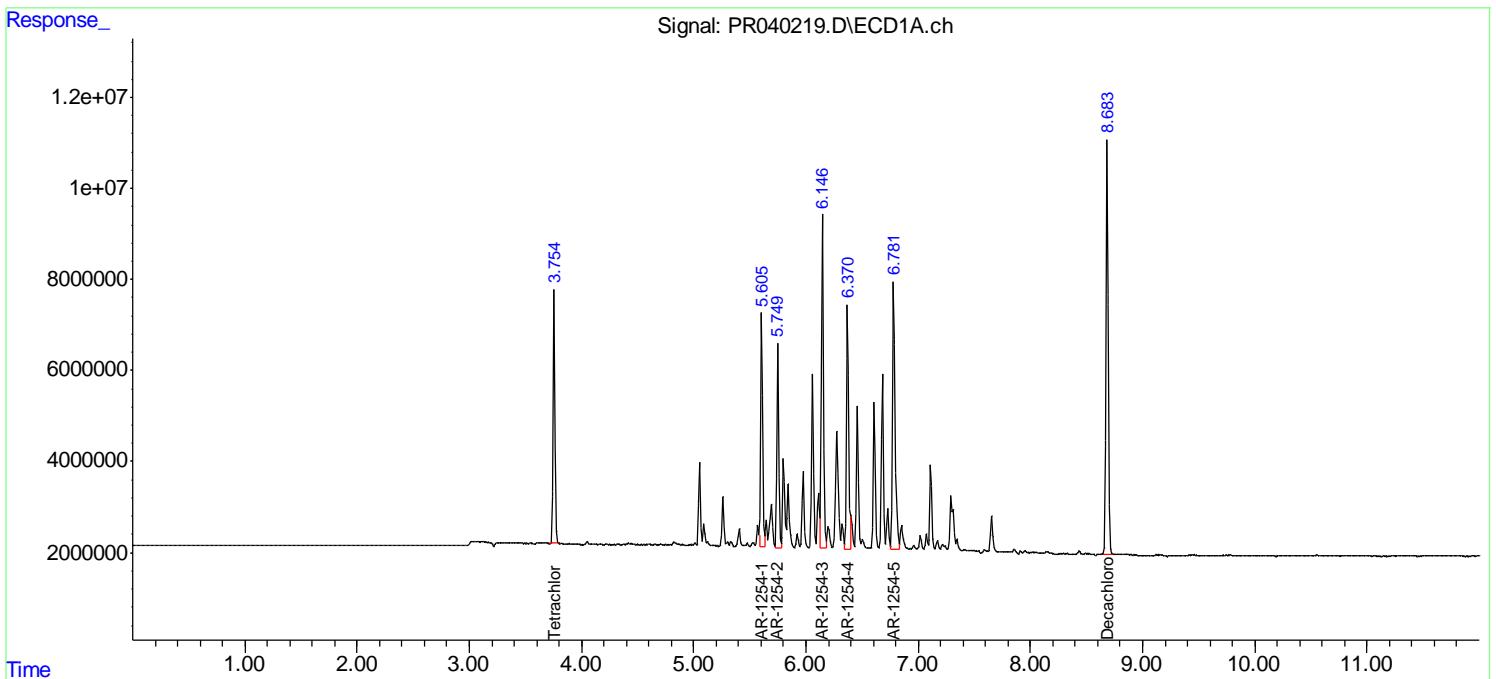
(f)=RT Delta > 1/2 Window (#)=Amounts differ by > 25% (m)=manual int.

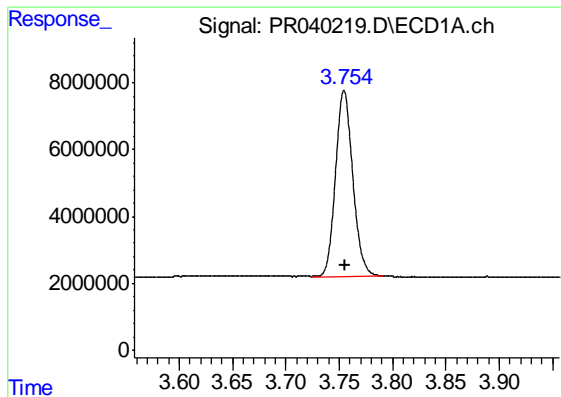
Data Path : Z:\pestpcbsrv\HPCHEM1\ECD_R\Data\PR080819\
 Data File : PR040219.D
 Signal(s) : Signal #1: ECD1A.ch Signal #2: ECD2B.ch
 Acq On : 07 Aug 2019 22:13
 Operator : SM\AJ
 Sample : AR1254ICC500
 Misc :
 ALS Vial : 12 Sample Multiplier: 1

Instrument :
 ECD_R
ClientSampled :
 AR1254ICC500

Integration File signal 1: autoint1.e
 Integration File signal 2: autoint2.e
 Quant Time: Aug 08 06:54:43 2019
 Quant Method : Z:\pestpcbsrv\HPCHEM1\ECD_R\Method\PR080819.M
 Quant Title : GC EXTRACTABLES
 QLast Update : Thu Aug 08 06:54:19 2019
 Response via : Initial Calibration
 Integrator: ChemStation

Volume Inj. : 2 µl
 Signal #1 Phase : ZB-MR1 Signal #2 Phase: ZB-MR2
 Signal #1 Info : 30Mx0.32mmx 0.50µ Signal #2 Info : 30M x 0.32mm x 0.25µm

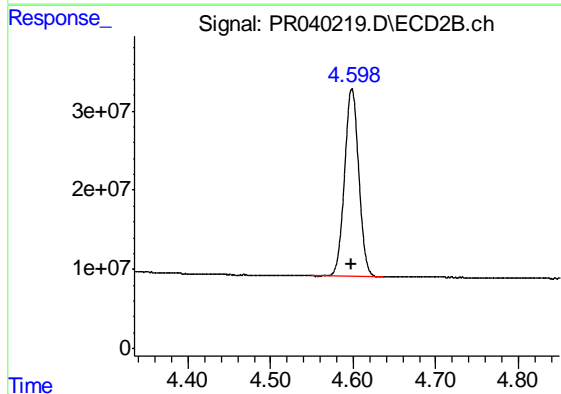




#1 Tetrachloro-m-xylene

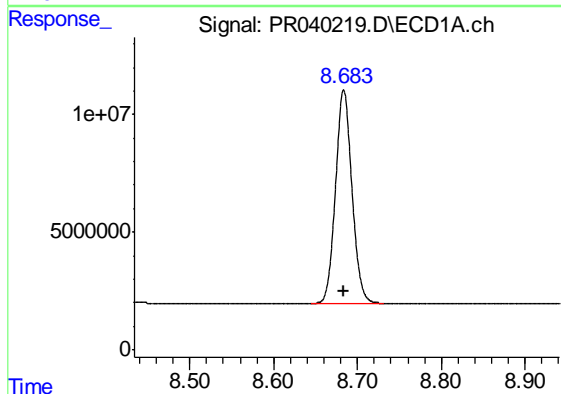
R.T.: 3.755 min
Delta R.T.: 0.000 min
Response: 62795937
Conc: 50.00 ng/ml

Instrument :
ECD_R
ClientSampleId :
AR1254ICC500



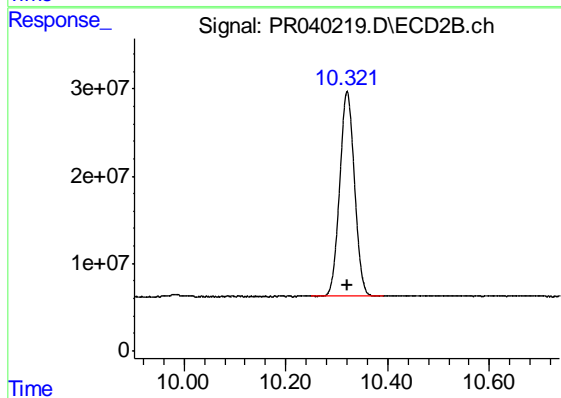
#1 Tetrachloro-m-xylene

R.T.: 4.598 min
Delta R.T.: 0.000 min
Response: 284805386
Conc: 50.00 ng/ml



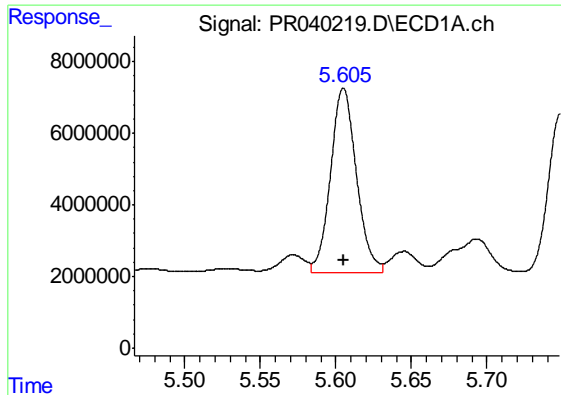
#2 Decachlorobiphenyl

R.T.: 8.684 min
Delta R.T.: 0.000 min
Response: 123636093
Conc: 50.00 ng/ml



#2 Decachlorobiphenyl

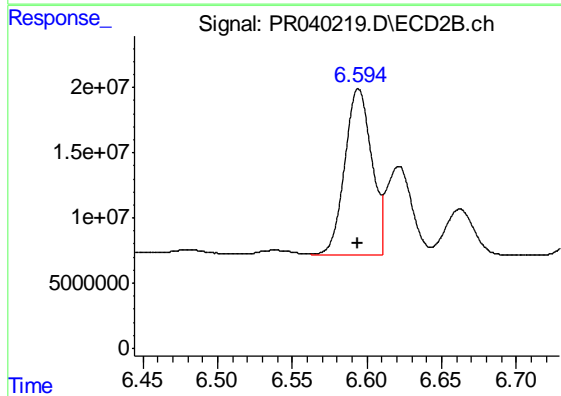
R.T.: 10.320 min
Delta R.T.: 0.000 min
Response: 473481028
Conc: 50.00 ng/ml



#26 AR-1254-1

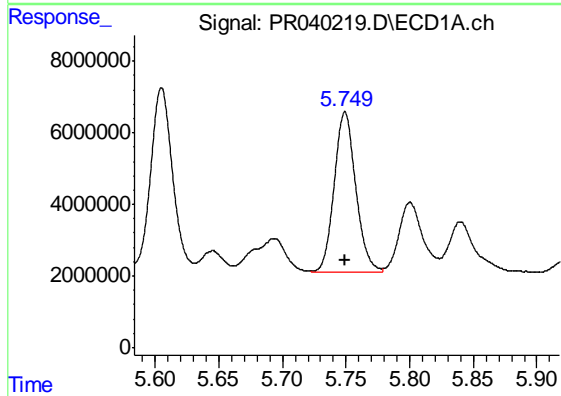
R.T.: 5.605 min
 Delta R.T.: 0.000 min
 Response: 61193553
 Conc: 500.00 ng/ml

Instrument :
 ECD_R
 ClientSampleId :
 AR1254ICC500



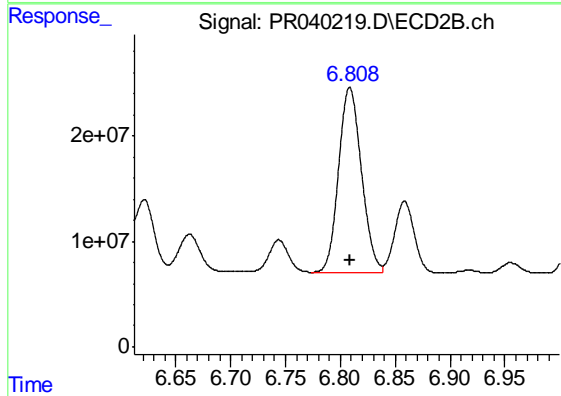
#26 AR-1254-1

R.T.: 6.594 min
 Delta R.T.: 0.000 min
 Response: 158913658
 Conc: 500.00 ng/ml



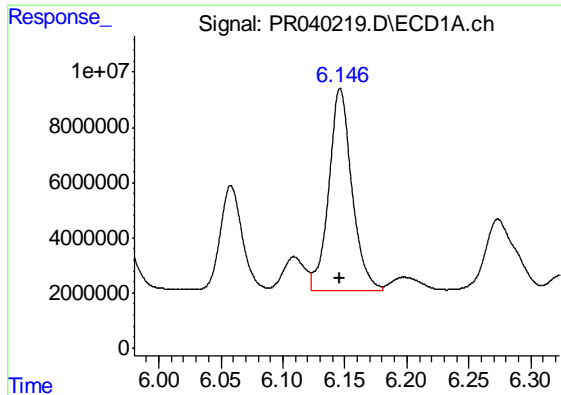
#27 AR-1254-2

R.T.: 5.749 min
 Delta R.T.: 0.000 min
 Response: 53156984
 Conc: 500.00 ng/ml



#27 AR-1254-2

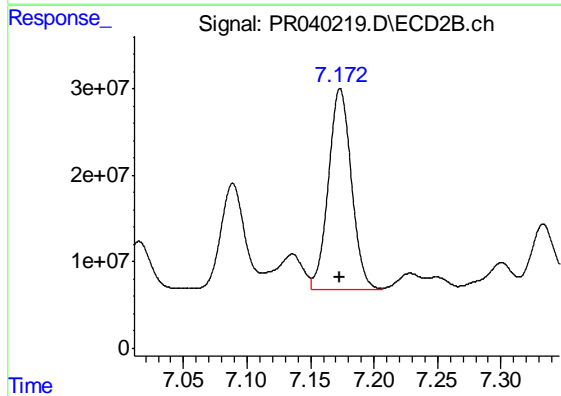
R.T.: 6.809 min
 Delta R.T.: 0.000 min
 Response: 254505990
 Conc: 500.00 ng/ml



#28 AR-1254-3

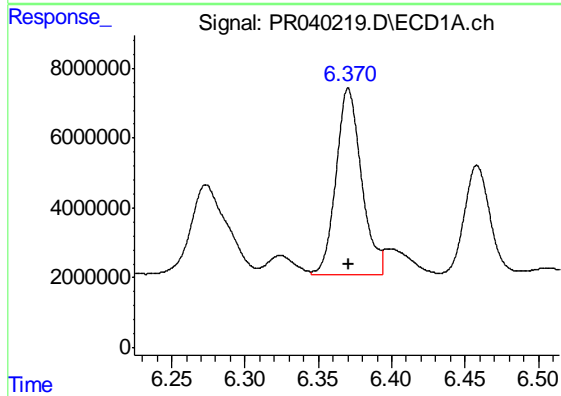
R.T.: 6.146 min
 Delta R.T.: 0.000 min
 Response: 94457102
 Conc: 500.00 ng/ml

Instrument :
 ECD_R
 ClientSampleId :
 AR1254ICC500



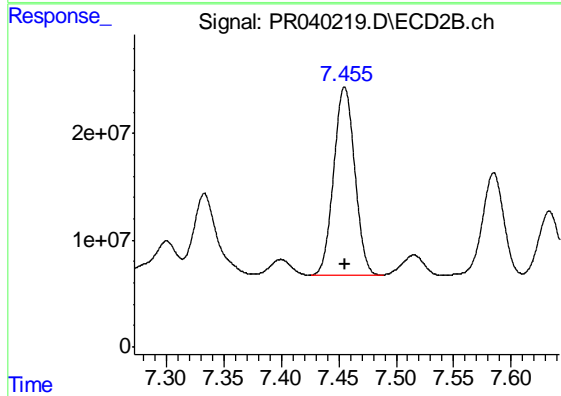
#28 AR-1254-3

R.T.: 7.173 min
 Delta R.T.: 0.000 min
 Response: 292476148
 Conc: 500.00 ng/ml



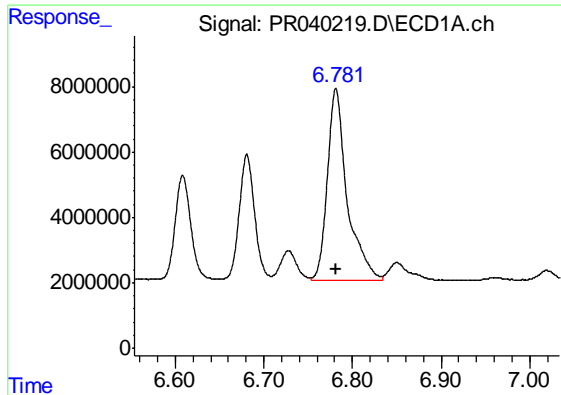
#29 AR-1254-4

R.T.: 6.370 min
 Delta R.T.: 0.000 min
 Response: 64642901
 Conc: 500.00 ng/ml



#29 AR-1254-4

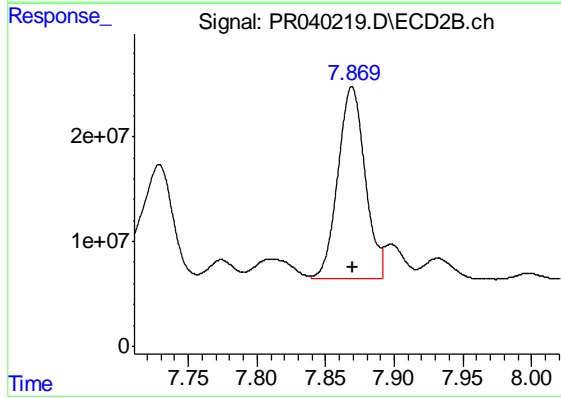
R.T.: 7.455 min
 Delta R.T.: 0.000 min
 Response: 226508133
 Conc: 500.00 ng/ml



#30 AR-1254-5

R.T.: 6.782 min
Delta R.T.: 0.000 min
Response: 91237177
Conc: 500.00 ng/ml

Instrument :
ECD_R
ClientSampleId :
AR1254ICC500



#30 AR-1254-5

R.T.: 7.869 min
Delta R.T.: 0.000 min
Response: 251822460
Conc: 500.00 ng/ml