

Data Path : Z:\pestpcbsrv\HPCHEM1\ECD_R\Data\PR080824\
 Data File : PR068092.D
 Signal(s) : Signal #1: ECD1A.ch Signal #2: ECD2B.ch
 Acq On : 08 Aug 2024 16:58
 Operator : AJ\MA
 Sample : AR1660ICC1000
 Misc :
 ALS Vial : 3 Sample Multiplier: 1

Instrument :
 ECD_R
 ClientSampleId :
 AR1660ICC1000

Integration File signal 1: autoint1.e
 Integration File signal 2: autoint2.e
 Quant Time: Aug 08 17:35:12 2024
 Quant Method : Z:\pestpcbsrv\HPCHEM1\ECD_R\Method\PR080824.M
 Quant Title : GC EXTRACTABLES
 QLast Update : Thu Aug 08 17:32:01 2024
 Response via : Initial Calibration
 Integrator: ChemStation

Volume Inj. : 2 µl
 Signal #1 Phase : ZB-MR1 Signal #2 Phase: ZB-MR2
 Signal #1 Info : 30Mx0.32mmx 0.50µ Signal #2 Info : 30M x 0.32mm x 0.25µm

Compound	RT#1	RT#2	Resp#1	Resp#2	ng/ml	ng/ml

System Monitoring Compounds						
1) SA Tetrachlo...	3.677	3.010	245.7E6	498.5E6	97.392	98.108
2) SA Decachlor...	9.580	8.330	426.5E6	512.0E6	96.373	97.349
Target Compounds						
3) L1 AR-1016-1	4.900	4.141	53683990	163.2E6	955.075	953.712
4) L1 AR-1016-2	4.922	4.160	103.3E6	234.7E6	954.745	972.028
5) L1 AR-1016-3	4.987	4.341	71134036	127.6E6	956.299	962.267
6) L1 AR-1016-4	5.089	4.393	58307193	103.6E6	965.574	940.868
7) L1 AR-1016-5	5.403	4.612	46248496	133.3E6	938.091	963.606
31) L7 AR-1260-1	6.615	5.717	82940301	277.6E6	946.997	967.175
32) L7 AR-1260-2	6.897	5.923	129.8E6	332.9E6	940.607	992.254
33) L7 AR-1260-3	7.287	6.083	128.9E6	314.0E6	947.807	990.624
34) L7 AR-1260-4	7.529	6.594	118.1E6	237.2E6	949.612	961.749
35) L7 AR-1260-5	7.867	6.860	361.6E6	573.3E6	964.428	981.678

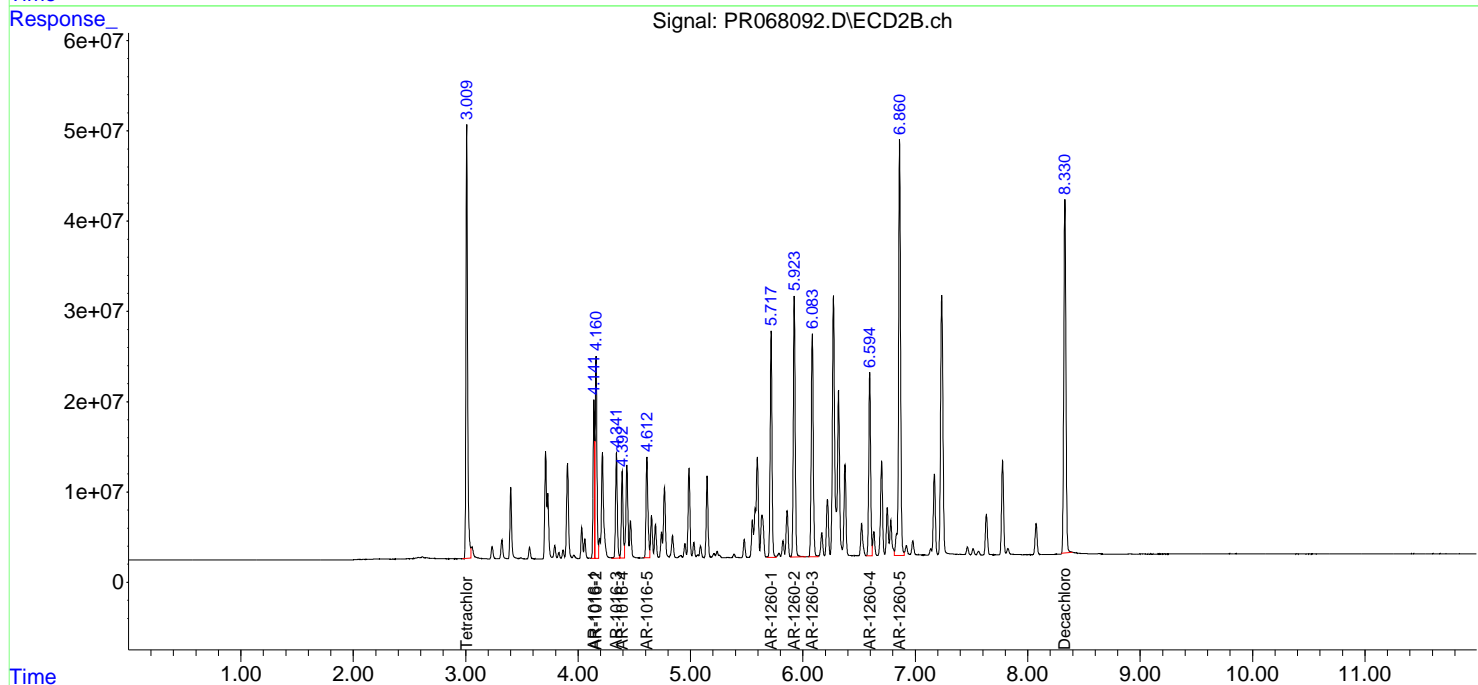
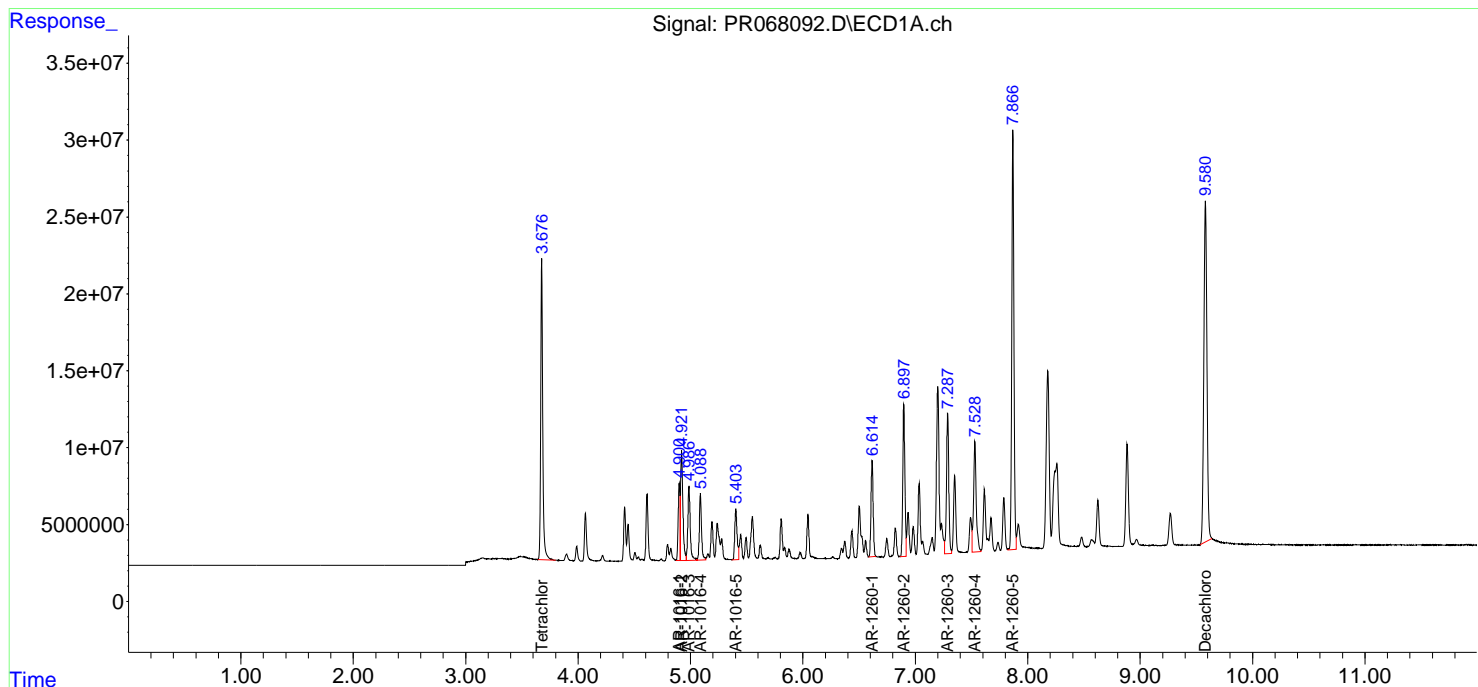
(f)=RT Delta > 1/2 Window (#)=Amounts differ by > 25% (m)=manual int.

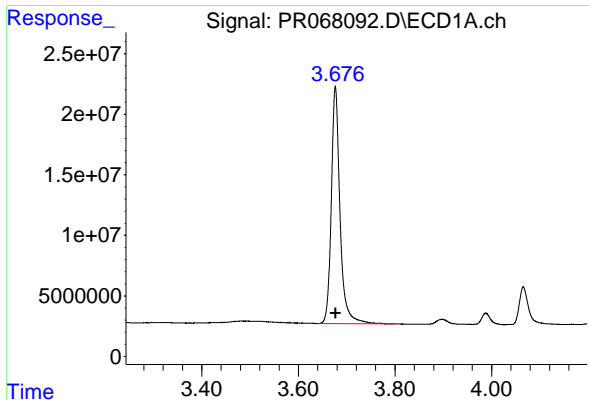
Data Path : Z:\pestpcbsrv\HPCHEM1\ECD_R\Data\PR080824\
 Data File : PR068092.D
 Signal(s) : Signal #1: ECD1A.ch Signal #2: ECD2B.ch
 Acq On : 08 Aug 2024 16:58
 Operator : AJ\MA
 Sample : AR1660ICC1000
 Misc :
 ALS Vial : 3 Sample Multiplier: 1

Instrument :
 ECD_R
 ClientSampleId :
 AR1660ICC1000

Integration File signal 1: autoint1.e
 Integration File signal 2: autoint2.e
 Quant Time: Aug 08 17:35:12 2024
 Quant Method : Z:\pestpcbsrv\HPCHEM1\ECD_R\Method\PR080824.M
 Quant Title : GC EXTRACTABLES
 QLast Update : Thu Aug 08 17:32:01 2024
 Response via : Initial Calibration
 Integrator: ChemStation

Volume Inj. : 2 µl
 Signal #1 Phase : ZB-MR1 Signal #2 Phase: ZB-MR2
 Signal #1 Info : 30Mx0.32mmx 0.50µm Signal #2 Info : 30M x 0.32mm x 0.25µm

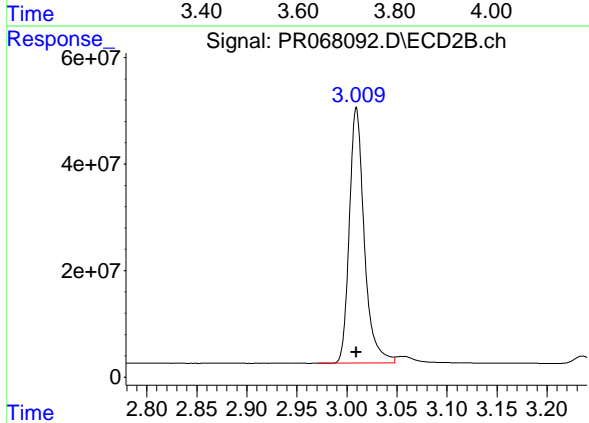




#1 Tetrachloro-m-xylene

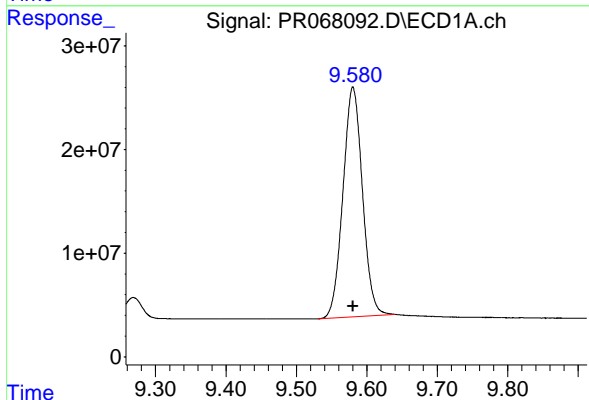
R.T.: 3.677 min
 Delta R.T.: 0.000 min
 Response: 245701974
 Conc: 97.39 ng/ml

Instrument :
 ECD_R
 ClientSampleId :
 AR1660ICC1000



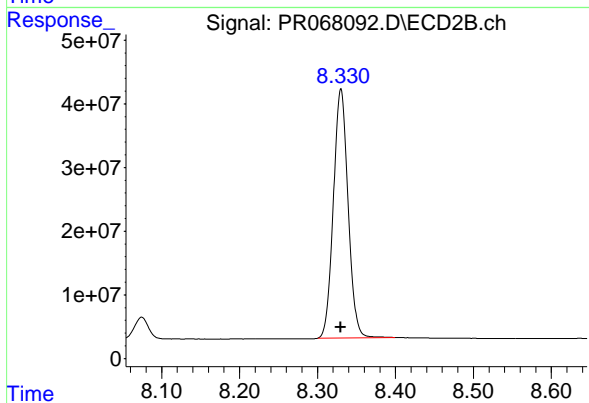
#1 Tetrachloro-m-xylene

R.T.: 3.010 min
 Delta R.T.: 0.000 min
 Response: 498471504
 Conc: 98.11 ng/ml



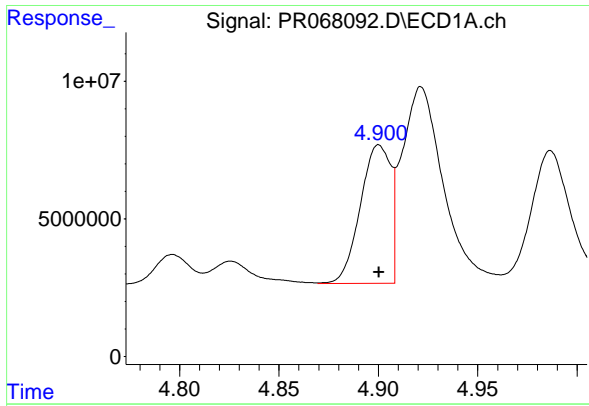
#2 Decachlorobiphenyl

R.T.: 9.580 min
 Delta R.T.: 0.000 min
 Response: 426537652
 Conc: 96.37 ng/ml



#2 Decachlorobiphenyl

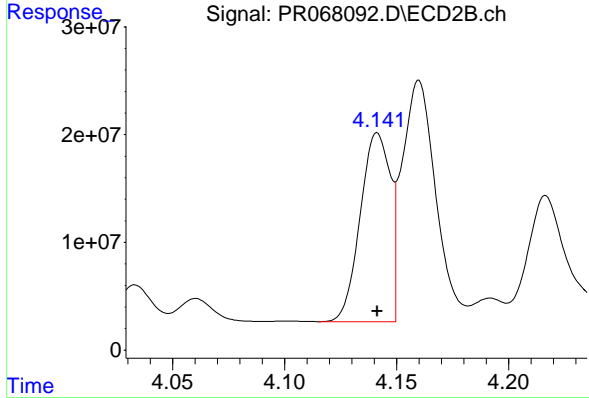
R.T.: 8.330 min
 Delta R.T.: 0.000 min
 Response: 512018144
 Conc: 97.35 ng/ml



#3 AR-1016-1

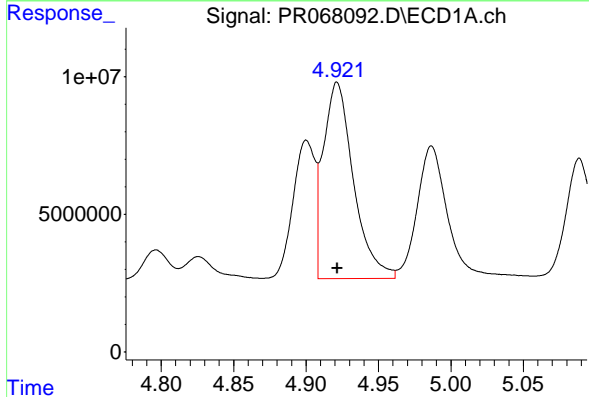
R.T.: 4.900 min
 Delta R.T.: 0.000 min
 Response: 53683990
 Conc: 955.07 ng/ml

Instrument :
 ECD_R
 ClientSampleId :
 AR1660ICC1000



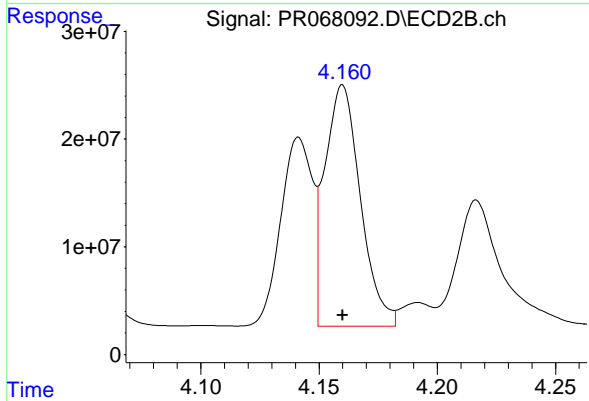
#3 AR-1016-1

R.T.: 4.141 min
 Delta R.T.: 0.000 min
 Response: 163227065
 Conc: 953.71 ng/ml



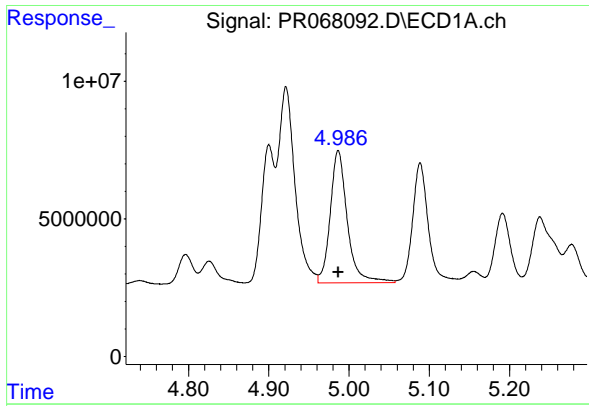
#4 AR-1016-2

R.T.: 4.922 min
 Delta R.T.: 0.000 min
 Response: 103272105
 Conc: 954.75 ng/ml



#4 AR-1016-2

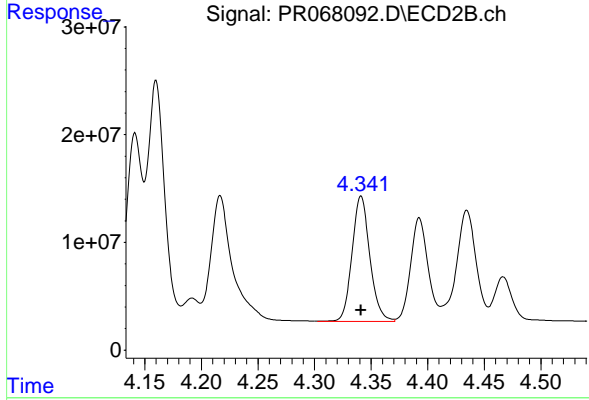
R.T.: 4.160 min
 Delta R.T.: 0.000 min
 Response: 234660795
 Conc: 972.03 ng/ml



#5 AR-1016-3

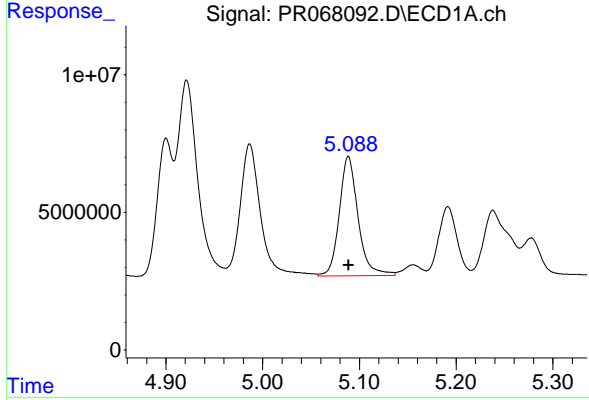
R.T.: 4.987 min
 Delta R.T.: 0.000 min
 Response: 71134036
 Conc: 956.30 ng/ml

Instrument :
 ECD_R
 ClientSampleId :
 AR1660ICC1000



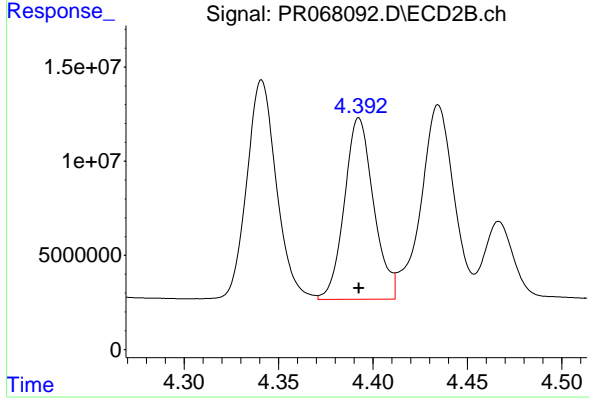
#5 AR-1016-3

R.T.: 4.341 min
 Delta R.T.: 0.000 min
 Response: 127643129
 Conc: 962.27 ng/ml



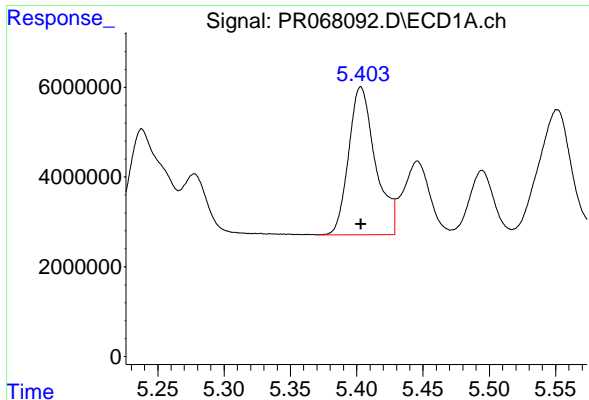
#6 AR-1016-4

R.T.: 5.089 min
 Delta R.T.: 0.000 min
 Response: 58307193
 Conc: 965.57 ng/ml



#6 AR-1016-4

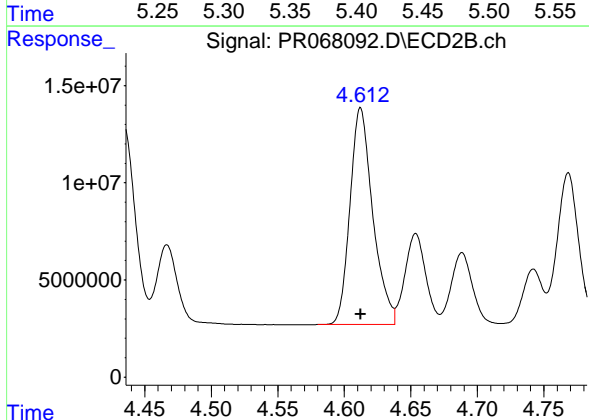
R.T.: 4.393 min
 Delta R.T.: 0.000 min
 Response: 103579126
 Conc: 940.87 ng/ml



#7 AR-1016-5

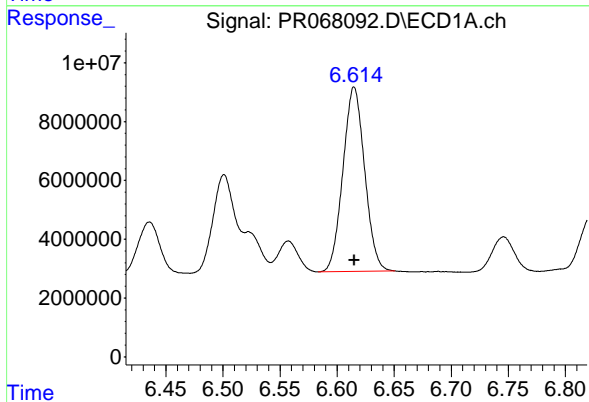
R.T.: 5.403 min
 Delta R.T.: 0.000 min
 Response: 46248496
 Conc: 938.09 ng/ml

Instrument :
 ECD_R
 ClientSampleId :
 AR1660ICC1000



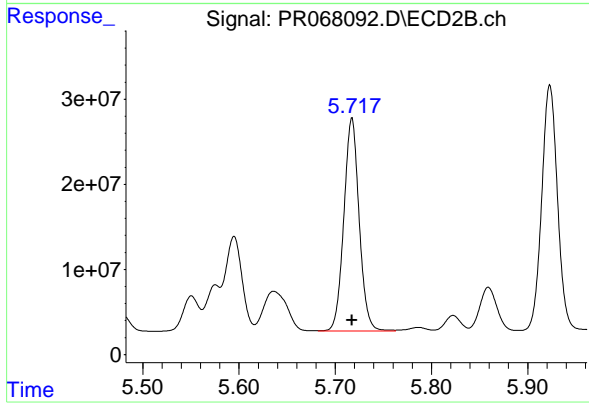
#7 AR-1016-5

R.T.: 4.612 min
 Delta R.T.: 0.000 min
 Response: 133290728
 Conc: 963.61 ng/ml



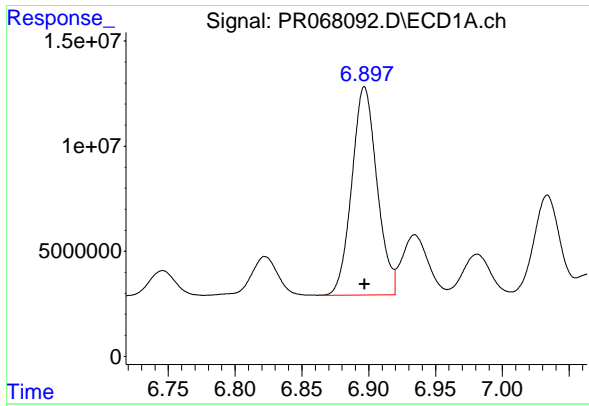
#31 AR-1260-1

R.T.: 6.615 min
 Delta R.T.: 0.000 min
 Response: 82940301
 Conc: 947.00 ng/ml



#31 AR-1260-1

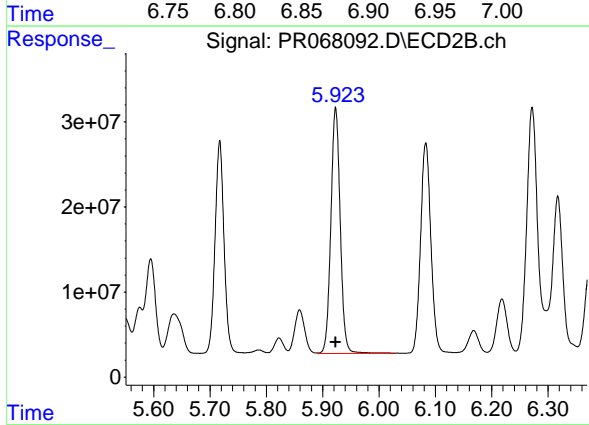
R.T.: 5.717 min
 Delta R.T.: 0.000 min
 Response: 277562876
 Conc: 967.17 ng/ml



#32 AR-1260-2

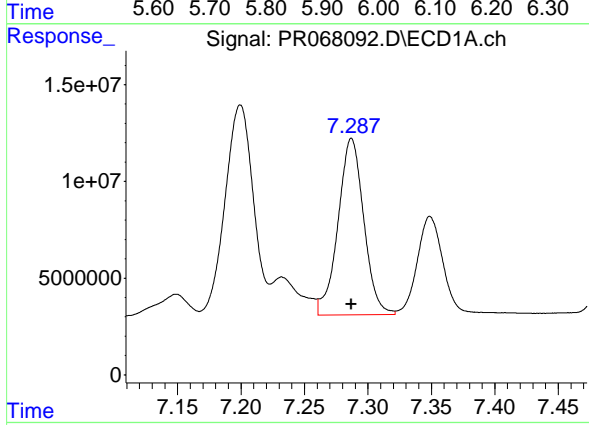
R.T.: 6.897 min
 Delta R.T.: 0.000 min
 Response: 129769719
 Conc: 940.61 ng/ml

Instrument :
 ECD_R
 ClientSampleId :
 AR1660ICC1000



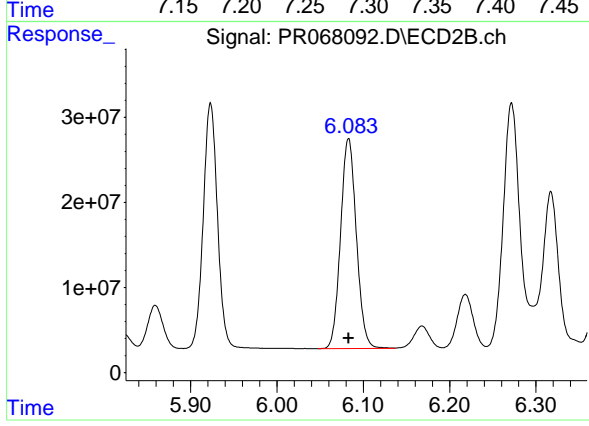
#32 AR-1260-2

R.T.: 5.923 min
 Delta R.T.: 0.000 min
 Response: 332912712
 Conc: 992.25 ng/ml



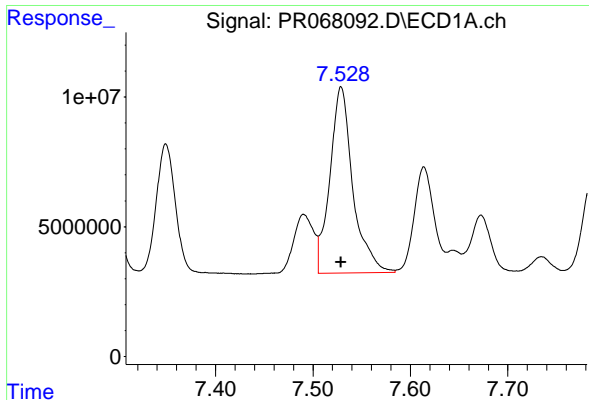
#33 AR-1260-3

R.T.: 7.287 min
 Delta R.T.: 0.000 min
 Response: 128918998
 Conc: 947.81 ng/ml



#33 AR-1260-3

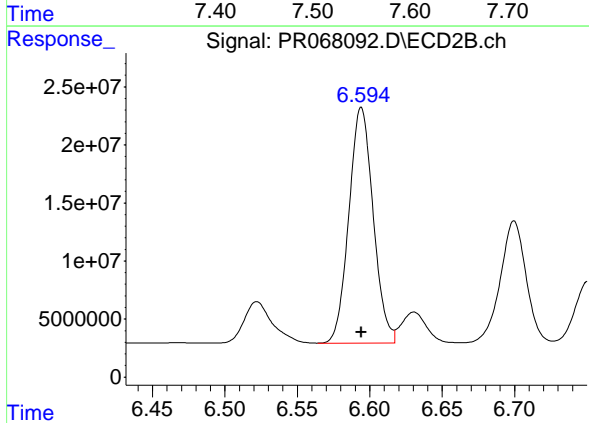
R.T.: 6.083 min
 Delta R.T.: 0.000 min
 Response: 313981233
 Conc: 990.62 ng/ml



#34 AR-1260-4

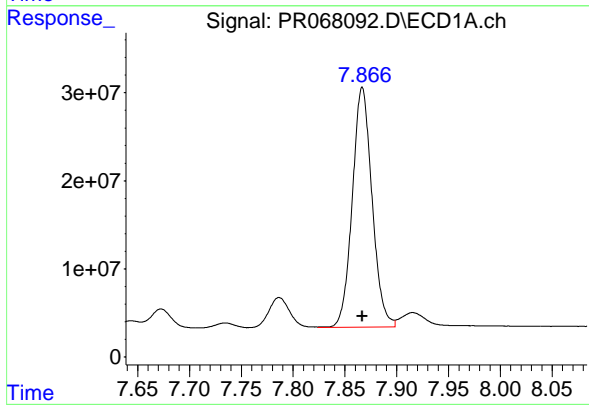
R.T.: 7.529 min
 Delta R.T.: 0.000 min
 Response: 118117174
 Conc: 949.61 ng/ml

Instrument :
 ECD_R
 ClientSampleId :
 AR1660ICC1000



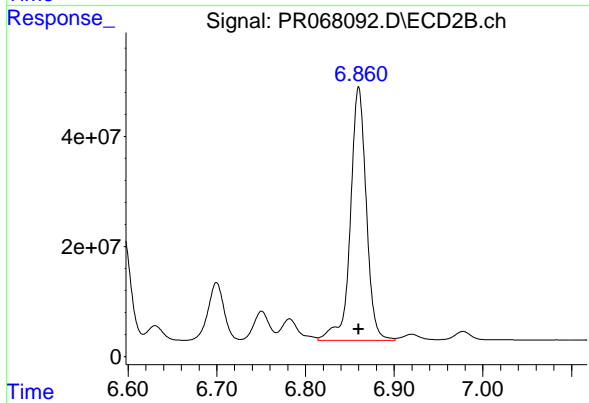
#34 AR-1260-4

R.T.: 6.594 min
 Delta R.T.: 0.000 min
 Response: 237216108
 Conc: 961.75 ng/ml



#35 AR-1260-5

R.T.: 7.867 min
 Delta R.T.: 0.000 min
 Response: 361602803
 Conc: 964.43 ng/ml



#35 AR-1260-5

R.T.: 6.860 min
 Delta R.T.: 0.000 min
 Response: 573308580
 Conc: 981.68 ng/ml