

Data Path : Z:\pestpcbsrv\HPCHEM1\ECD_R\Data\PR080923\
 Data File : PR062501.D
 Signal(s) : Signal #1: ECD1A.ch Signal #2: ECD2B.ch
 Acq On : 08 Aug 2023 18:28
 Operator : YP\AJ
 Sample : AR1248ICC500
 Misc :
 ALS Vial : 11 Sample Multiplier: 1

Instrument :
 ECD_R
ClientSampleId :
 AR1248ICC500

Integration File signal 1: autoint1.e
 Integration File signal 2: autoint2.e
 Quant Time: Aug 09 01:14:03 2023
 Quant Method : Z:\pestpcbsrv\HPCHEM1\ECD_R\Method\PR080923.M
 Quant Title : GC EXTRACTABLES
 QLast Update : Wed Aug 09 01:13:31 2023
 Response via : Initial Calibration
 Integrator: ChemStation

Volume Inj. : 2 µl
 Signal #1 Phase : ZB-MR1 Signal #2 Phase: ZB-MR2
 Signal #1 Info : 30Mx0.32mmx 0.50µ Signal #2 Info : 30M x 0.32mm x 0.25µm

Compound	RT#1	RT#2	Resp#1	Resp#2	ng/ml	ng/ml

System Monitoring Compounds						
1) SA Tetrachlo...	3.685	2.956	97159693	153.4E6	50.000	50.000
2) SA Decachlor...	9.618	8.236	73378254	199.4E6	50.000	50.000
Target Compounds						
21) L5 AR-1248-1	4.914	4.079	20537112	33456397	500.000	500.000
22) L5 AR-1248-2	5.208	4.328	30283630	47913915	500.000	500.000
23) L5 AR-1248-3	5.421	4.369	35064232	49365192	500.000	500.000
24) L5 AR-1248-4	5.854	4.547	36163342	59321344	500.000	500.000
25) L5 AR-1248-5	5.895	4.961	35415885	59751966	500.000	500.000

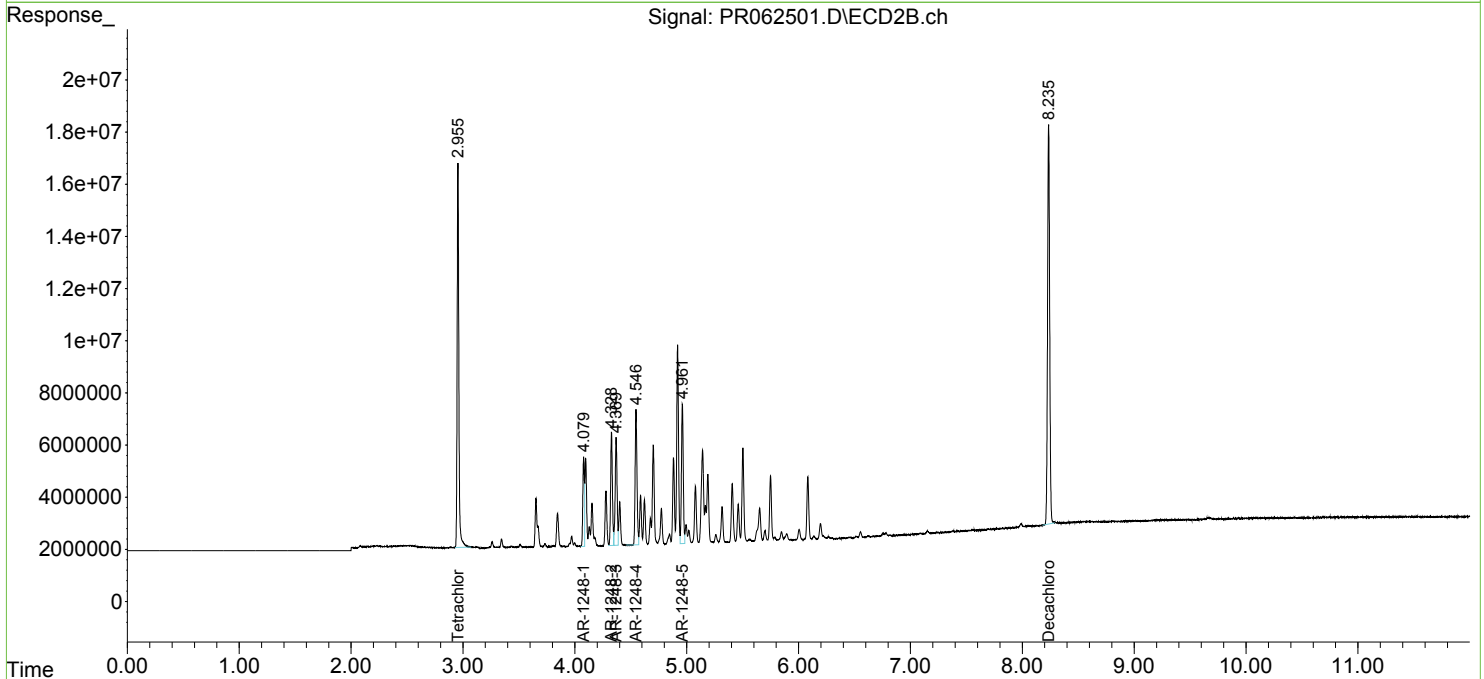
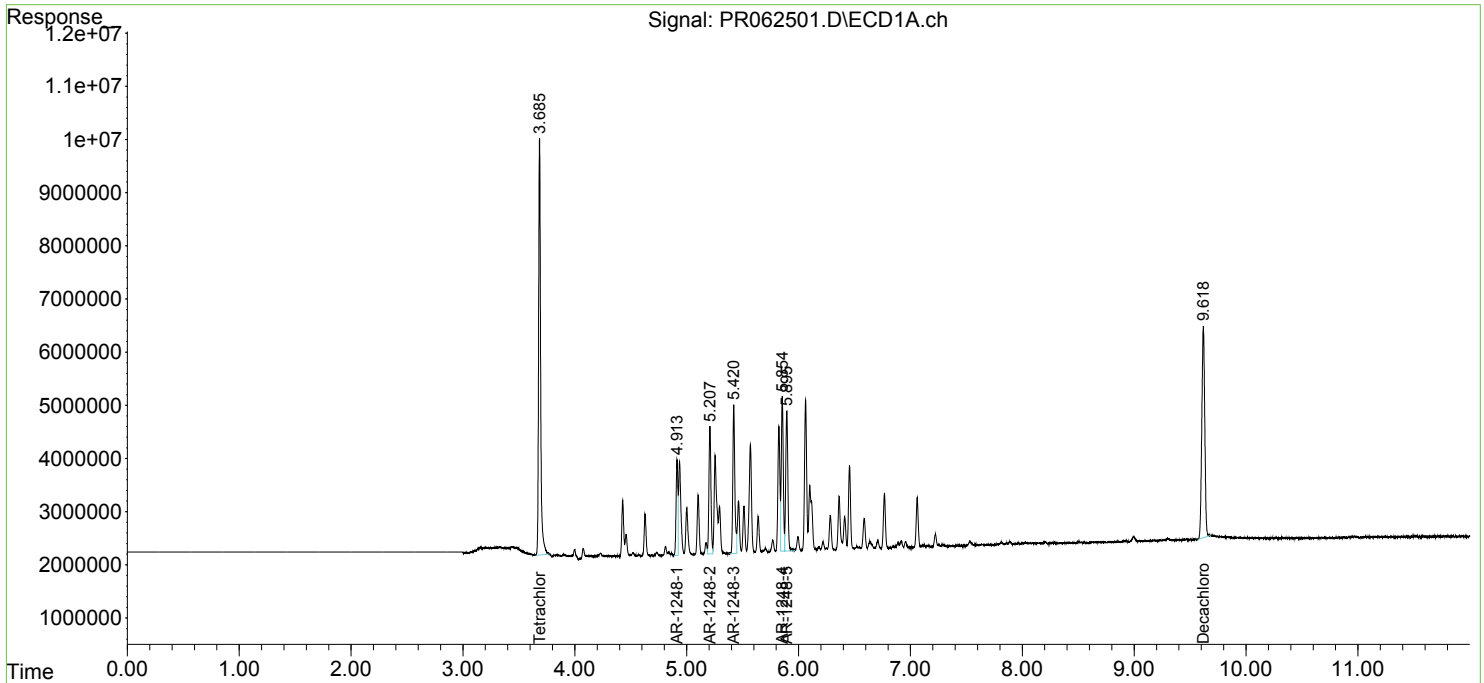
(f)=RT Delta > 1/2 Window (#)=Amounts differ by > 25% (m)=manual int.

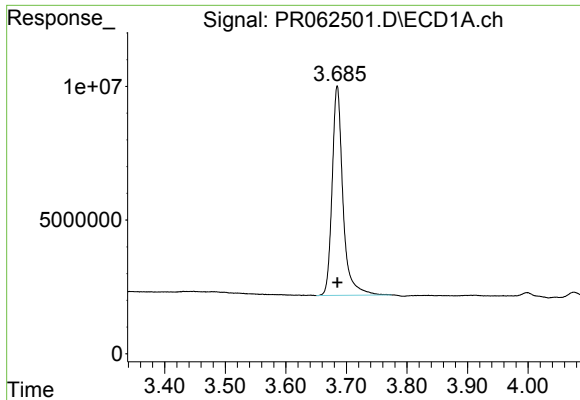
Data Path : Z:\pestpcbsrv\HPCHEM1\ECD_R\Data\PR080923\
 Data File : PR062501.D
 Signal(s) : Signal #1: ECD1A.ch Signal #2: ECD2B.ch
 Acq On : 08 Aug 2023 18:28
 Operator : YP\AJ
 Sample : AR1248ICC500
 Misc :
 ALS Vial : 11 Sample Multiplier: 1

Instrument :
 ECD_R
ClientSampleId :
 AR1248ICC500

Integration File signal 1: autoint1.e
 Integration File signal 2: autoint2.e
 Quant Time: Aug 09 01:14:03 2023
 Quant Method : Z:\pestpcbsrv\HPCHEM1\ECD_R\Method\PR080923.M
 Quant Title : GC EXTRACTABLES
 QLast Update : Wed Aug 09 01:13:31 2023
 Response via : Initial Calibration
 Integrator: ChemStation

Volume Inj. : 2 µl
 Signal #1 Phase : ZB-MR1 Signal #2 Phase: ZB-MR2
 Signal #1 Info : 30Mx0.32mmx 0.50µ Signal #2 Info : 30M x 0.32mm x 0.25µm

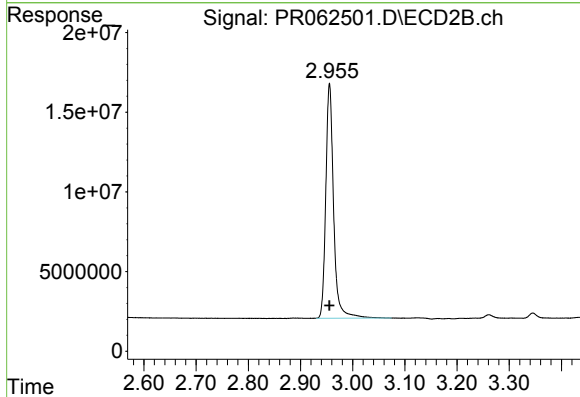




#1 Tetrachloro-m-xylene

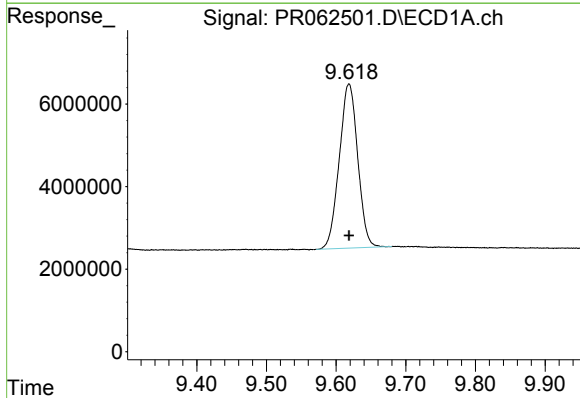
R.T.: 3.685 min
Delta R.T.: 0.000 min
Response: 97159693
Conc: 50.00 ng/ml

Instrument :
ECD_R
ClientSampleId :
AR1248ICC500



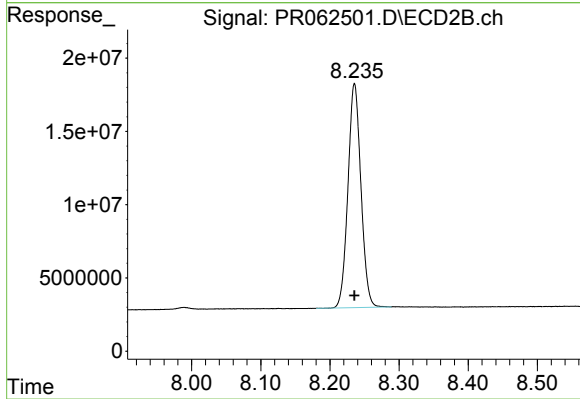
#1 Tetrachloro-m-xylene

R.T.: 2.956 min
Delta R.T.: 0.000 min
Response: 153380771
Conc: 50.00 ng/ml



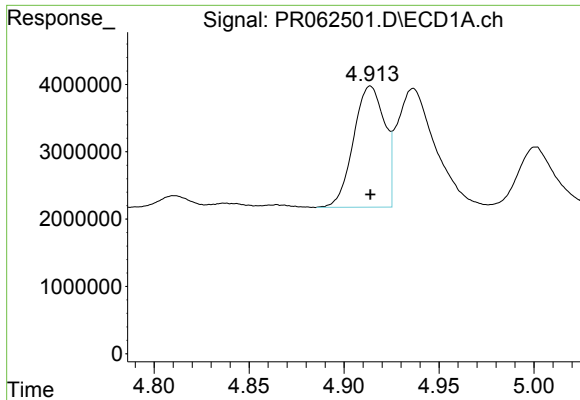
#2 Decachlorobiphenyl

R.T.: 9.618 min
Delta R.T.: 0.000 min
Response: 73378254
Conc: 50.00 ng/ml



#2 Decachlorobiphenyl

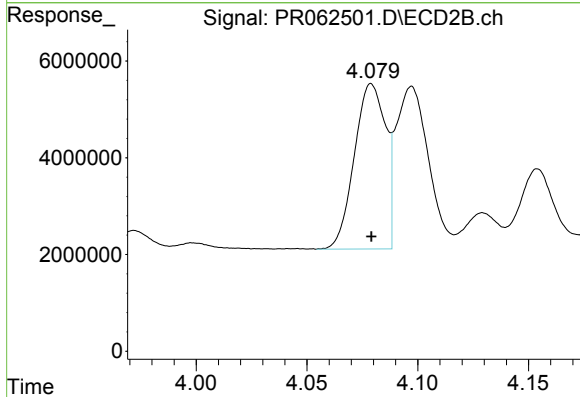
R.T.: 8.236 min
Delta R.T.: 0.000 min
Response: 199438209
Conc: 50.00 ng/ml



#21 AR-1248-1

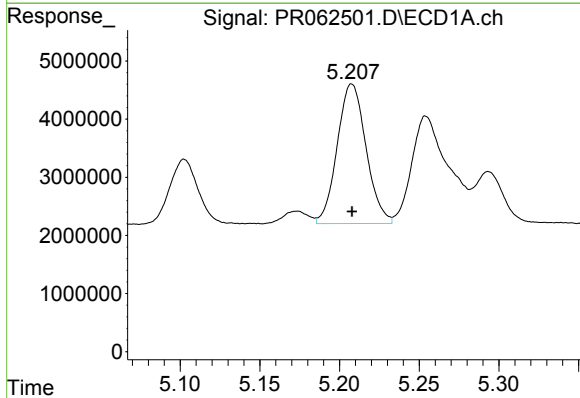
R.T.: 4.914 min
 Delta R.T.: 0.000 min
 Response: 20537112
 Conc: 500.00 ng/ml

Instrument :
 ECD_R
 ClientSampleId :
 AR1248ICC500



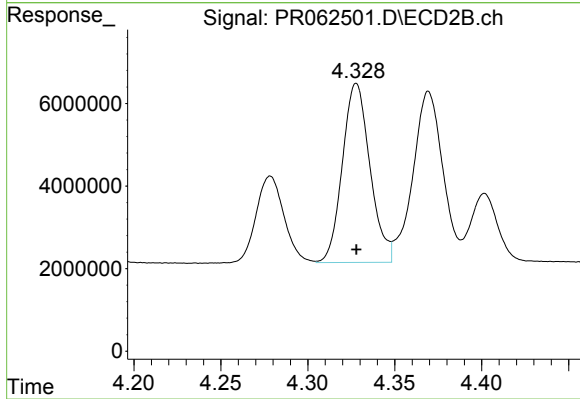
#21 AR-1248-1

R.T.: 4.079 min
 Delta R.T.: 0.000 min
 Response: 33456397
 Conc: 500.00 ng/ml



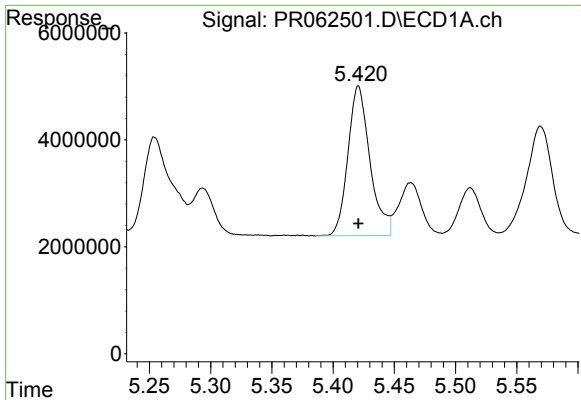
#22 AR-1248-2

R.T.: 5.208 min
 Delta R.T.: 0.000 min
 Response: 30283630
 Conc: 500.00 ng/ml



#22 AR-1248-2

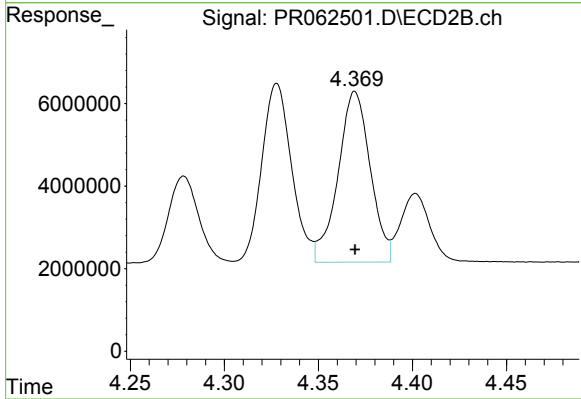
R.T.: 4.328 min
 Delta R.T.: 0.000 min
 Response: 47913915
 Conc: 500.00 ng/ml



#23 AR-1248-3

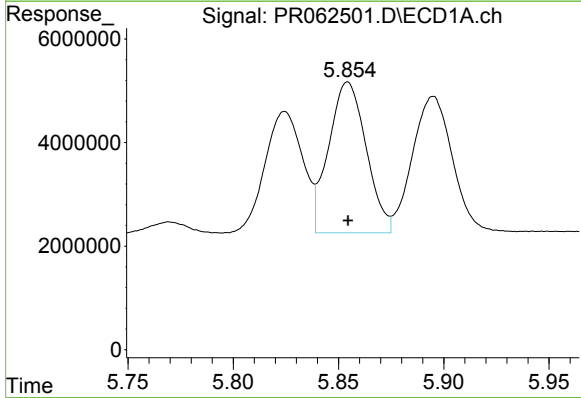
R.T.: 5.421 min
 Delta R.T.: 0.000 min
 Response: 35064232
 Conc: 500.00 ng/ml

Instrument :
 ECD_R
 ClientSampleId :
 AR1248ICC500



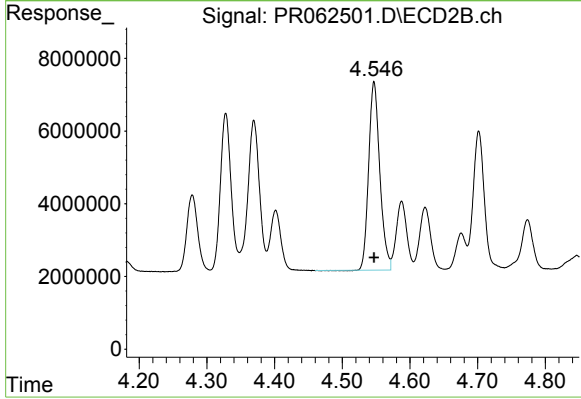
#23 AR-1248-3

R.T.: 4.369 min
 Delta R.T.: 0.000 min
 Response: 49365192
 Conc: 500.00 ng/ml



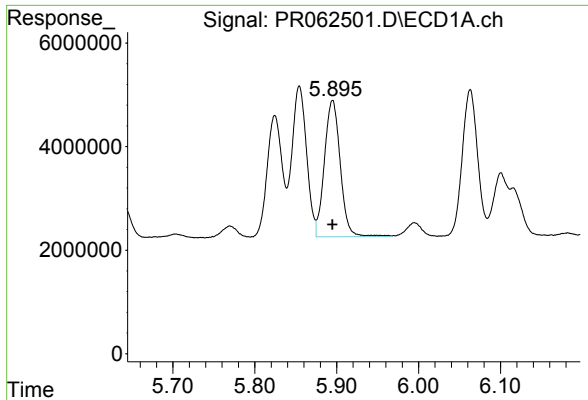
#24 AR-1248-4

R.T.: 5.854 min
 Delta R.T.: 0.000 min
 Response: 36163342
 Conc: 500.00 ng/ml



#24 AR-1248-4

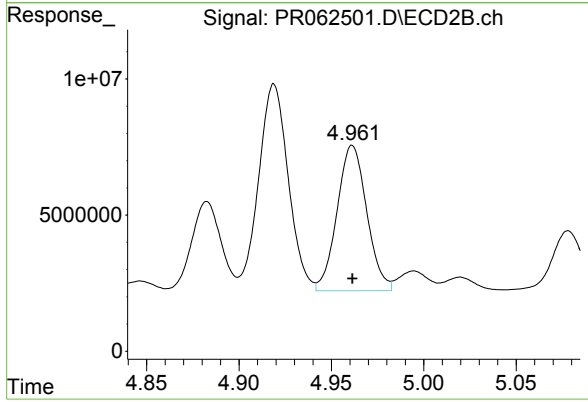
R.T.: 4.547 min
 Delta R.T.: 0.000 min
 Response: 59321344
 Conc: 500.00 ng/ml



#25 AR-1248-5

R.T.: 5.895 min
Delta R.T.: 0.000 min
Response: 35415885
Conc: 500.00 ng/ml

Instrument :
ECD_R
ClientSampleId :
AR1248ICC500



#25 AR-1248-5

R.T.: 4.961 min
Delta R.T.: 0.000 min
Response: 59751966
Conc: 500.00 ng/ml