

Data Path : Z:\pestpcbsrv\HPCHEM1\ECD\_R\Data\PR080923\  
 Data File : PR062528.D  
 Signal(s) : Signal #1: ECD1A.ch Signal #2: ECD2B.ch  
 Acq On : 09 Aug 2023 01:06  
 Operator : YP\AJ  
 Sample : AR1660CCC500  
 Misc :  
 ALS Vial : 5 Sample Multiplier: 1

**Instrument :**  
 ECD\_R  
**ClientSampleId :**  
 AR1660CCC500

Integration File signal 1: autoint1.e  
 Integration File signal 2: autoint2.e  
 Quant Time: Aug 09 01:45:26 2023  
 Quant Method : Z:\pestpcbsrv\HPCHEM1\ECD\_R\Method\PR080923.M  
 Quant Title : GC EXTRACTABLES  
 QLast Update : Wed Aug 09 01:27:38 2023  
 Response via : Initial Calibration  
 Integrator: ChemStation

Volume Inj. : 2 µl  
 Signal #1 Phase : ZB-MR1 Signal #2 Phase: ZB-MR2  
 Signal #1 Info : 30Mx0.32mmx 0.50µ Signal #2 Info : 30M x 0.32mm x 0.25µm

Compound	RT#1	RT#2	Resp#1	Resp#2	ng/ml	ng/ml
-----						
System Monitoring Compounds						
1) SA Tetrachlo...	3.684	2.955	99158527	145.4E6	49.114	50.083
2) SA Decachlor...	9.614	8.232	75946707	199.5E6	50.989	48.090
Target Compounds						
3) L1 AR-1016-1	4.913	4.078	33165196	52879895	493.888	487.476
4) L1 AR-1016-2	4.935	4.096	48164759	74555113	498.797	488.308
5) L1 AR-1016-3	5.000	4.277	30834801	41274196	500.499	492.602
6) L1 AR-1016-4	5.103	4.327	24826171	33090176	509.373	487.671
7) L1 AR-1016-5	5.420	4.546	26210812	43765629	502.355	481.035
31) L7 AR-1260-1	6.635	5.642	49730360	94307543	481.707	484.736
32) L7 AR-1260-2	6.917	5.847	54956613	114.9E6	501.006	483.164
33) L7 AR-1260-3	7.308	6.007	41173375	111.1E6	505.020	492.698
34) L7 AR-1260-4	7.550	6.515	45062305	98195860	501.062	495.702
35) L7 AR-1260-5	7.887	6.779	81315680	233.3E6	501.832	503.405

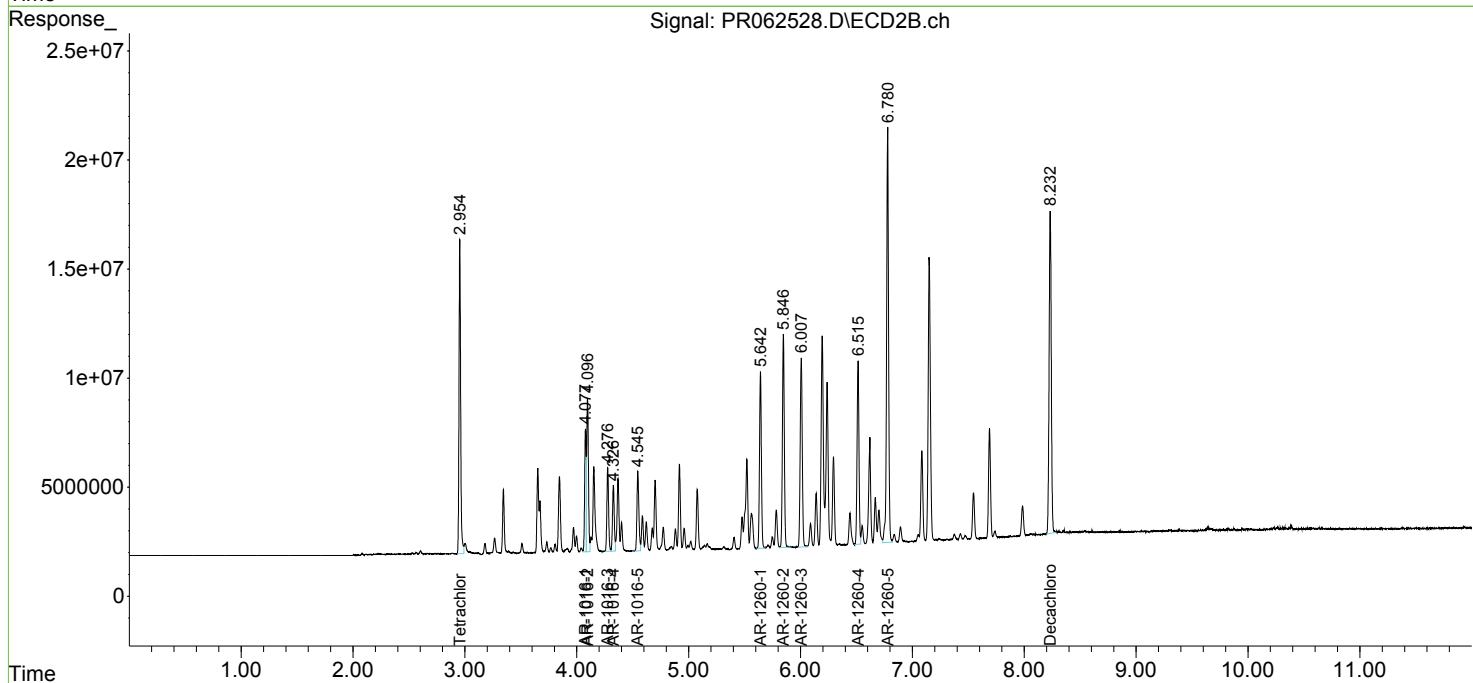
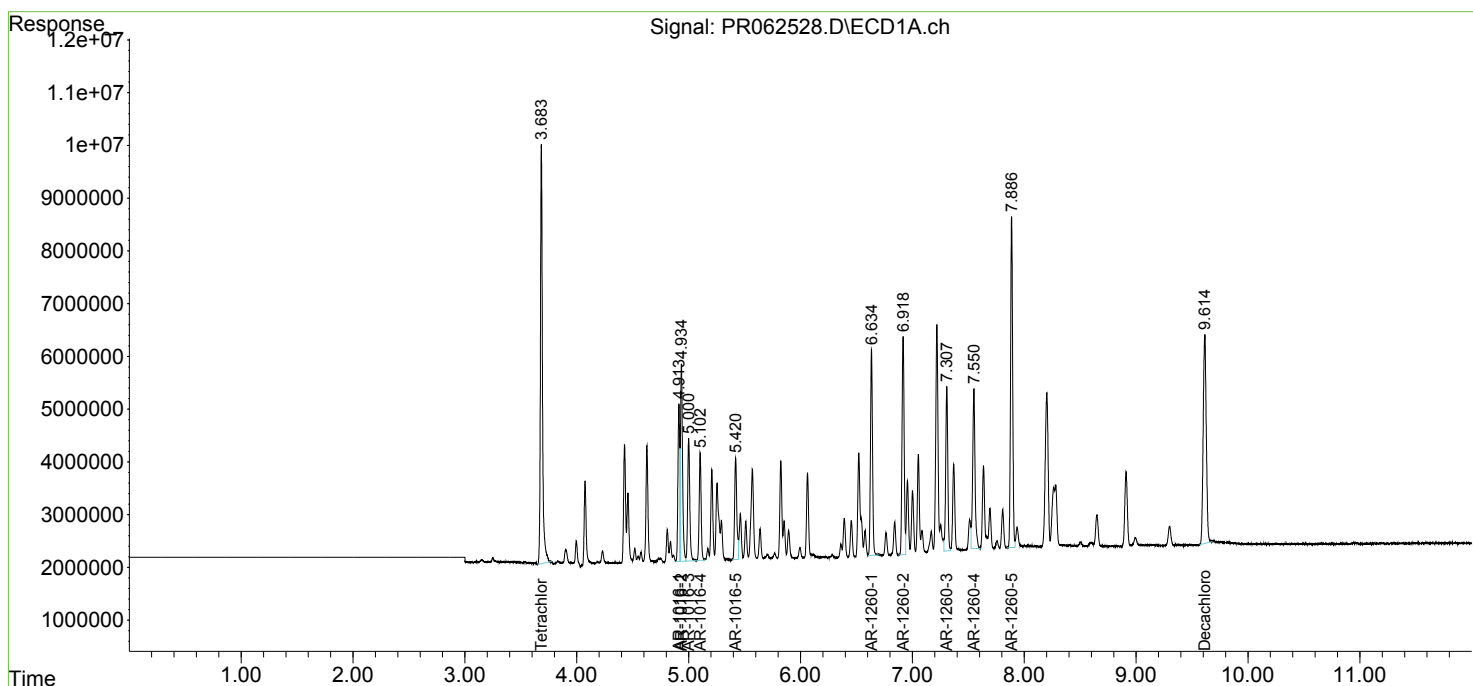
(f)=RT Delta > 1/2 Window (#)=Amounts differ by > 25% (m)=manual int.

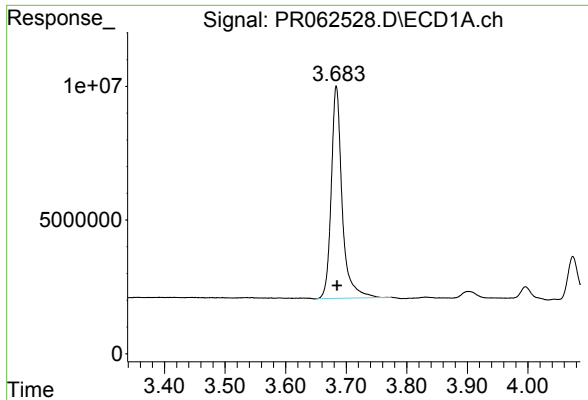
Data Path : Z:\pestpcbsrv\HPCHEM1\ECD\_R\Data\PR080923\  
 Data File : PR062528.D  
 Signal(s) : Signal #1: ECD1A.ch Signal #2: ECD2B.ch  
 Acq On : 09 Aug 2023 01:06  
 Operator : YP\AJ  
 Sample : AR1660CCC500  
 Misc :  
 ALS Vial : 5 Sample Multiplier: 1

Instrument :  
 ECD\_R  
 ClientSampleId :  
 AR1660CCC500

Integration File signal 1: autoint1.e  
 Integration File signal 2: autoint2.e  
 Quant Time: Aug 09 01:45:26 2023  
 Quant Method : Z:\pestpcbsrv\HPCHEM1\ECD\_R\Method\PR080923.M  
 Quant Title : GC EXTRACTABLES  
 QLast Update : Wed Aug 09 01:27:38 2023  
 Response via : Initial Calibration  
 Integrator: ChemStation

Volume Inj. : 2 µl  
 Signal #1 Phase : ZB-MR1 Signal #2 Phase: ZB-MR2  
 Signal #1 Info : 30Mx0.32mmx 0.50µ Signal #2 Info : 30M x 0.32mm x 0.25µm

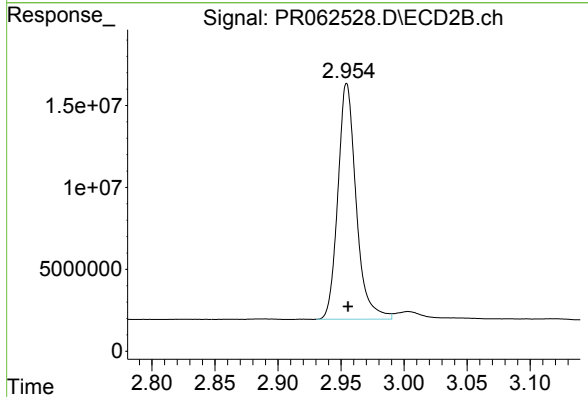




#1 Tetrachloro-m-xylene

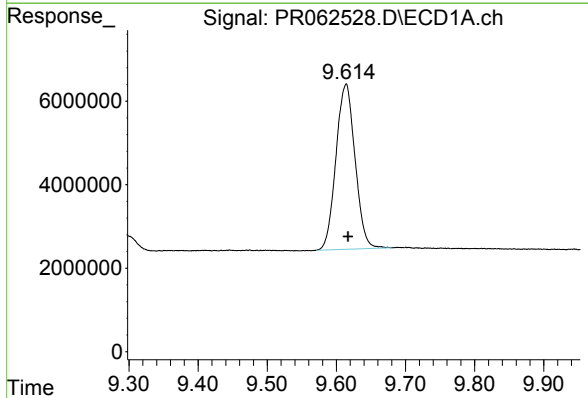
R.T.: 3.684 min  
 Delta R.T.: -0.001 min  
 Response: 99158527  
 Conc: 49.11 ng/ml

Instrument :  
 ECD\_R  
 ClientSampleId :  
 AR1660CCC500



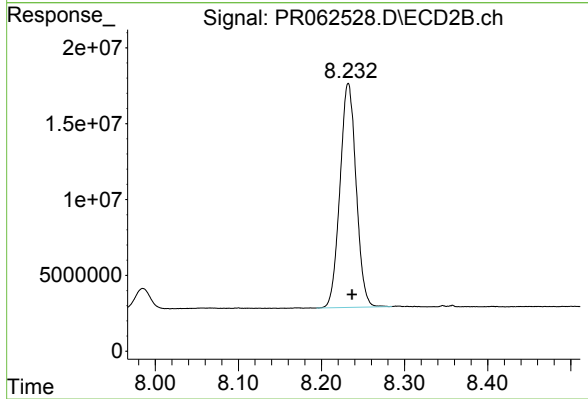
#1 Tetrachloro-m-xylene

R.T.: 2.955 min  
 Delta R.T.: 0.000 min  
 Response: 145394423  
 Conc: 50.08 ng/ml



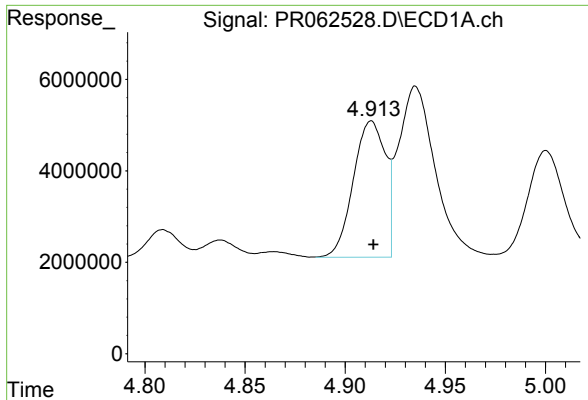
#2 Decachlorobiphenyl

R.T.: 9.614 min  
 Delta R.T.: -0.003 min  
 Response: 75946707  
 Conc: 50.99 ng/ml



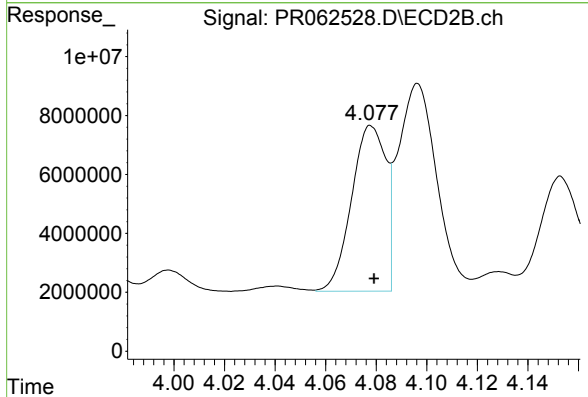
#2 Decachlorobiphenyl

R.T.: 8.232 min  
 Delta R.T.: -0.004 min  
 Response: 199546201  
 Conc: 48.09 ng/ml

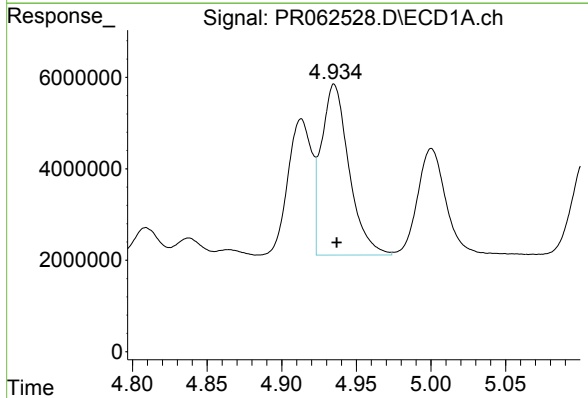


#3 AR-1016-1  
 R.T.: 4.913 min  
 Delta R.T.: -0.001 min  
 Response: 33165196  
 Conc: 493.89 ng/ml

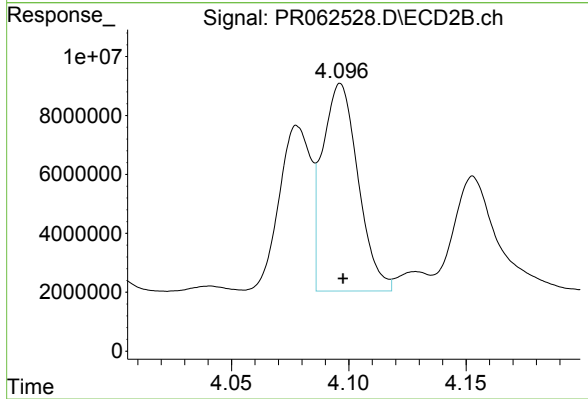
Instrument :  
 ECD\_R  
 ClientSampleId :  
 AR1660CCC500



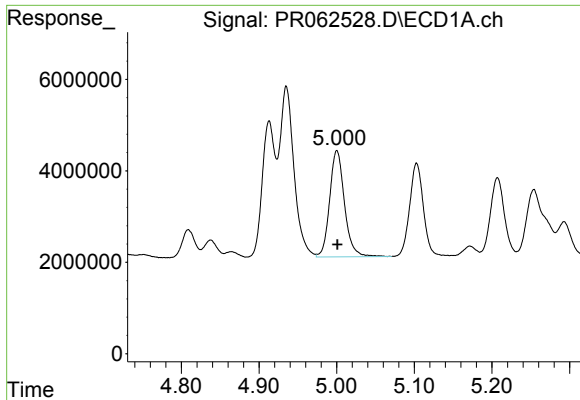
#3 AR-1016-1  
 R.T.: 4.078 min  
 Delta R.T.: -0.001 min  
 Response: 52879895  
 Conc: 487.48 ng/ml



#4 AR-1016-2  
 R.T.: 4.935 min  
 Delta R.T.: -0.002 min  
 Response: 48164759  
 Conc: 498.80 ng/ml



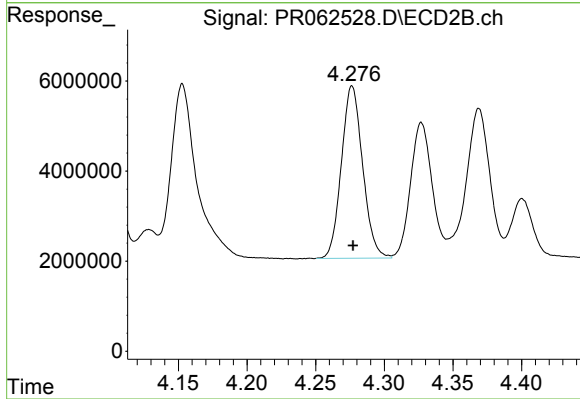
#4 AR-1016-2  
 R.T.: 4.096 min  
 Delta R.T.: -0.001 min  
 Response: 74555113  
 Conc: 488.31 ng/ml



#5 AR-1016-3

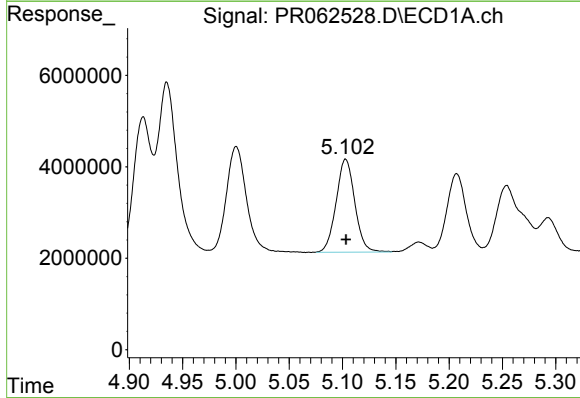
R.T.: 5.000 min  
 Delta R.T.: 0.000 min  
 Response: 30834801  
 Conc: 500.50 ng/ml

Instrument :  
 ECD\_R  
 ClientSampleId :  
 AR1660CCC500



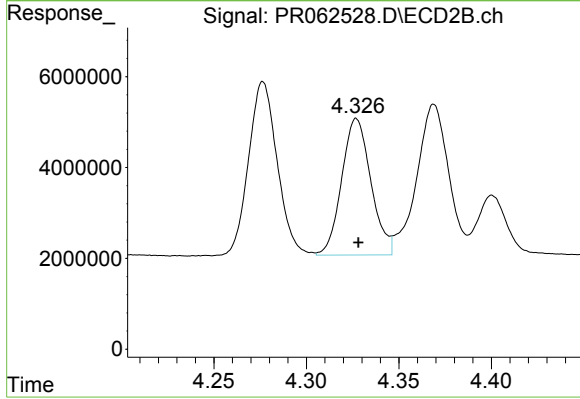
#5 AR-1016-3

R.T.: 4.277 min  
 Delta R.T.: 0.000 min  
 Response: 41274196  
 Conc: 492.60 ng/ml



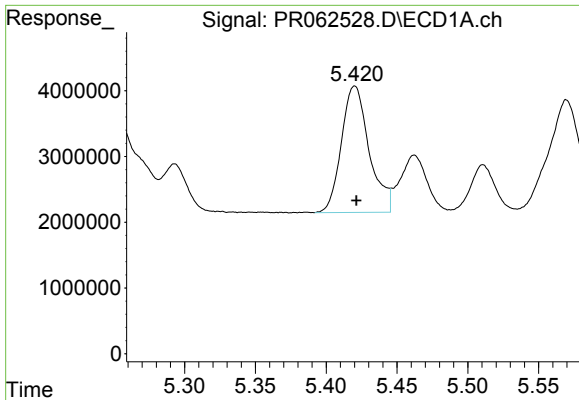
#6 AR-1016-4

R.T.: 5.103 min  
 Delta R.T.: 0.000 min  
 Response: 24826171  
 Conc: 509.37 ng/ml



#6 AR-1016-4

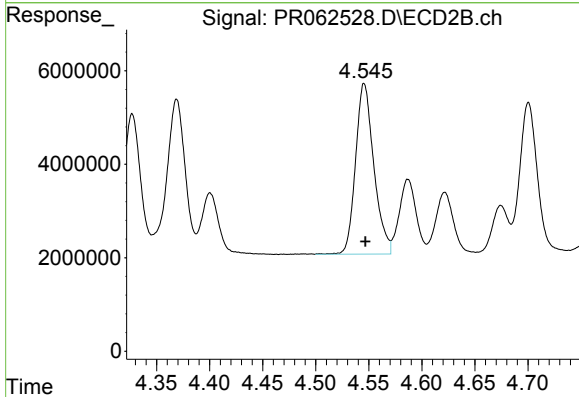
R.T.: 4.327 min  
 Delta R.T.: -0.001 min  
 Response: 33090176  
 Conc: 487.67 ng/ml



#7 AR-1016-5

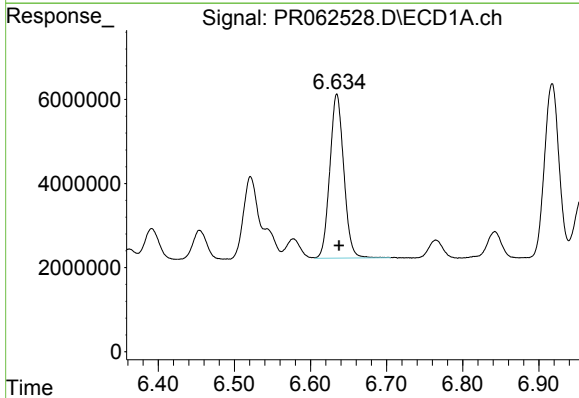
R.T.: 5.420 min  
 Delta R.T.: -0.001 min  
 Response: 26210812  
 Conc: 502.36 ng/ml

Instrument :  
 ECD\_R  
 ClientSampleId :  
 AR1660CCC500



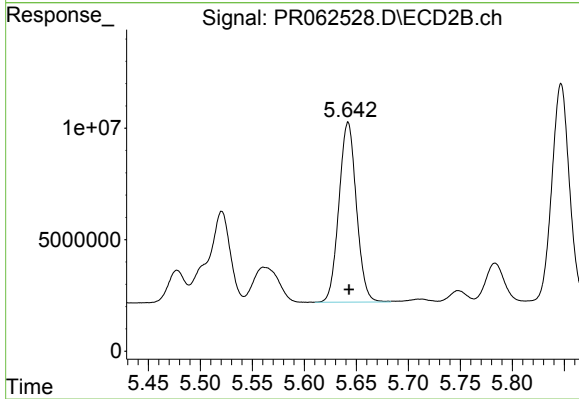
#7 AR-1016-5

R.T.: 4.546 min  
 Delta R.T.: -0.001 min  
 Response: 43765629  
 Conc: 481.03 ng/ml



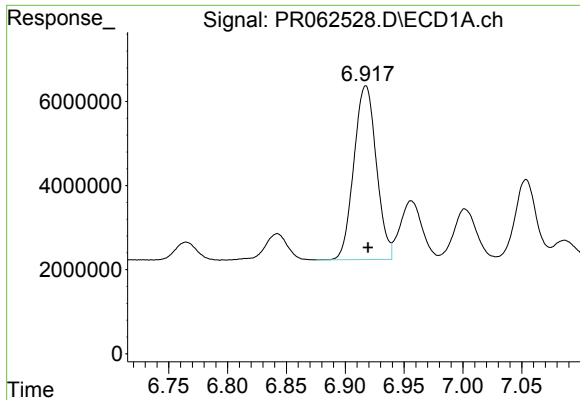
#31 AR-1260-1

R.T.: 6.635 min  
 Delta R.T.: -0.003 min  
 Response: 49730360  
 Conc: 481.71 ng/ml



#31 AR-1260-1

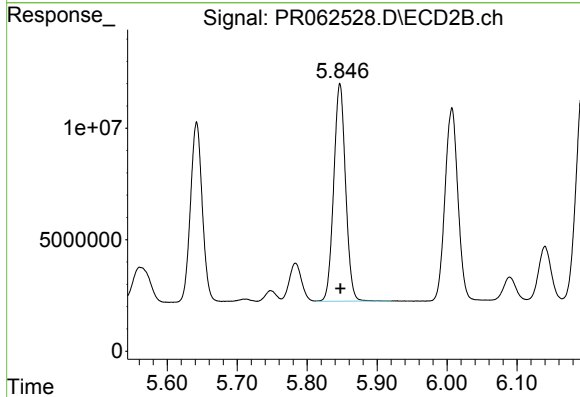
R.T.: 5.642 min  
 Delta R.T.: 0.000 min  
 Response: 94307543  
 Conc: 484.74 ng/ml



#32 AR-1260-2

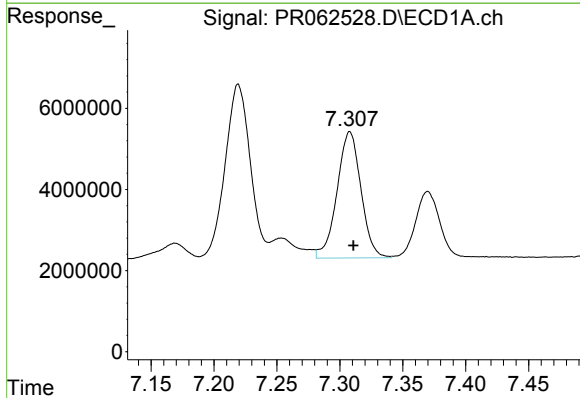
R.T.: 6.917 min  
 Delta R.T.: -0.002 min  
 Response: 54956613  
 Conc: 501.01 ng/ml

Instrument :  
 ECD\_R  
 ClientSampleId :  
 AR1660CCC500



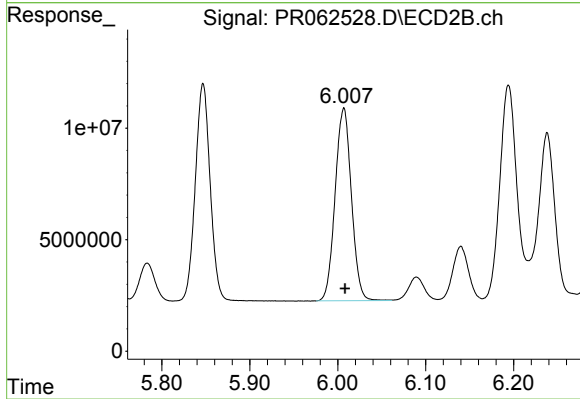
#32 AR-1260-2

R.T.: 5.847 min  
 Delta R.T.: 0.000 min  
 Response: 114864831  
 Conc: 483.16 ng/ml



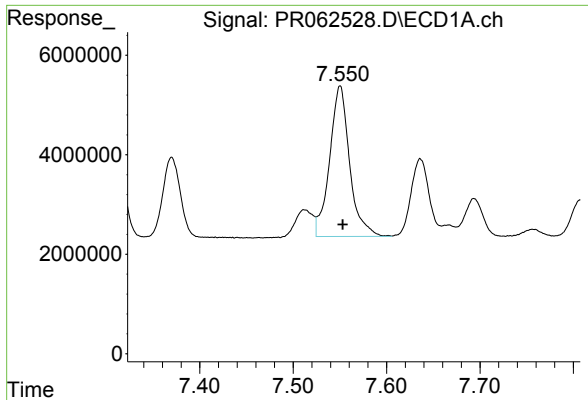
#33 AR-1260-3

R.T.: 7.308 min  
 Delta R.T.: -0.003 min  
 Response: 41173375  
 Conc: 505.02 ng/ml



#33 AR-1260-3

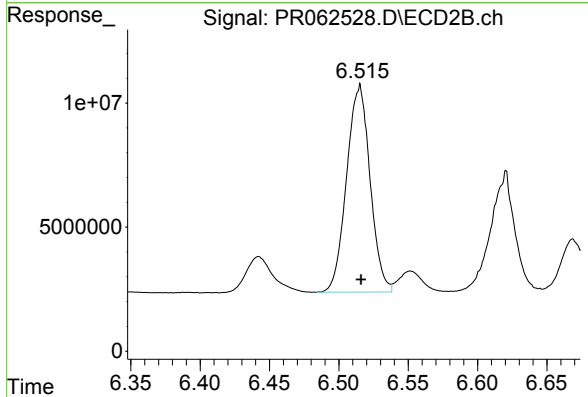
R.T.: 6.007 min  
 Delta R.T.: -0.001 min  
 Response: 111117081  
 Conc: 492.70 ng/ml



#34 AR-1260-4

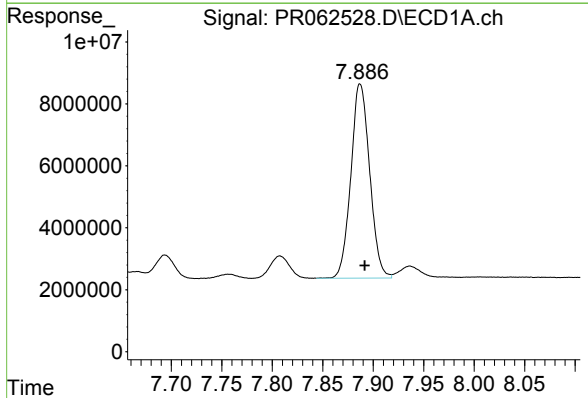
R.T.: 7.550 min  
 Delta R.T.: -0.003 min  
 Response: 45062305  
 Conc: 501.06 ng/ml

Instrument :  
 ECD\_R  
 ClientSampleId :  
 AR1660CCC500



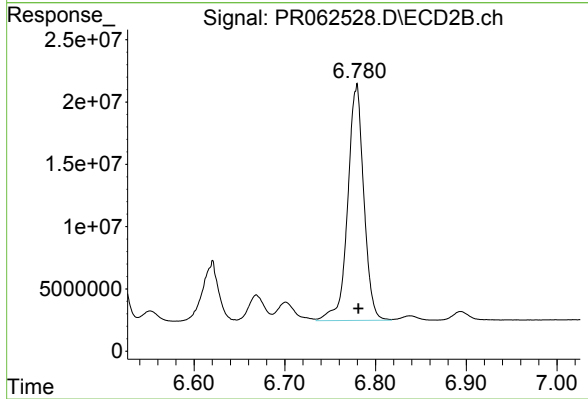
#34 AR-1260-4

R.T.: 6.515 min  
 Delta R.T.: -0.001 min  
 Response: 98195860  
 Conc: 495.70 ng/ml



#35 AR-1260-5

R.T.: 7.887 min  
 Delta R.T.: -0.005 min  
 Response: 81315680  
 Conc: 501.83 ng/ml



#35 AR-1260-5

R.T.: 6.779 min  
 Delta R.T.: -0.002 min  
 Response: 233297256  
 Conc: 503.41 ng/ml