

Data Path : Z:\pestpcbsrv\HPCHEM1\ECD\_R\Data\PR081023\  
 Data File : PR062556.D  
 Signal(s) : Signal #1: ECD1A.ch Signal #2: ECD2B.ch  
 Acq On : 09 Aug 2023 10:43  
 Operator : YP\AJ  
 Sample : 03572-08  
 Misc : AR1232 LOQ 50 PPB  
 ALS Vial : 7 Sample Multiplier: 1

Instrument :  
 ECD\_R  
 ClientSampleId :

Integration File signal 1: autoint1.e  
 Integration File signal 2: autoint2.e  
 Quant Time: Aug 09 21:56:31 2023  
 Quant Method : Z:\pestpcbsrv\HPCHEM1\ECD\_R\Method\PR080923.M  
 Quant Title : GC EXTRACTABLES  
 QLast Update : Wed Aug 09 01:27:38 2023  
 Response via : Initial Calibration  
 Integrator: ChemStation

Volume Inj. : 2 µl  
 Signal #1 Phase : ZB-MR1 Signal #2 Phase: ZB-MR2  
 Signal #1 Info : 30Mx0.32mmx 0.50µ Signal #2 Info : 30M x 0.32mm x 0.25µm

Compound	RT#1	RT#2	Resp#1	Resp#2	ng/ml	ng/ml
System Monitoring Compounds						
1) SA Tetrachlo...	3.684	2.955	34800066	55909938	17.237	19.259
2) SA Decachlor...	9.618	8.237	30654772	81630392	20.581	19.673
Target Compounds						
3) L1 AR-1016-1	4.913	4.078	1455981	2282308	21.682	21.040
4) L1 AR-1016-2	4.935	4.096	2080923	3066308	21.550	20.083
5) L1 AR-1016-3	5.000	4.277	1532034	1677935	24.867	20.026
6) L1 AR-1016-4	5.102	4.327	987797	1416992	20.267	20.883
7) L1 AR-1016-5	5.420	4.545	1055992	1682637	20.239	18.494
8) L2 AR-1221-1	3.909	3.181	772611	1042269	31.586	27.549
9) L2 AR-1221-2	3.997	3.264	757654	1800071	48.904	49.853
10) L2 AR-1221-3	4.075	3.345	2350094	3909037	39.151	43.459
11) L3 AR-1232-1	4.075	3.345	2350094	3909037	47.318	52.195
12) L3 AR-1232-2	4.627	4.096	1086373	3066308	43.992	44.458
13) L3 AR-1232-3	4.935	4.277	2080923	1677935	48.718	45.217
14) L3 AR-1232-4	5.102	4.369	987797	1573422	46.729	46.467
15) L3 AR-1232-5	5.208	4.545	877467	1682637	50.456	42.822
16) L4 AR-1242-1	4.913	4.078	1455981	2282308	26.122	25.369
17) L4 AR-1242-2	4.935	4.096	2080923	3066308	25.921	24.457
18) L4 AR-1242-3	5.000	4.277	1532034	1677935	29.747	24.251
19) L4 AR-1242-4	5.102	4.369	987797	1573422	24.442	22.944
20) L4 AR-1242-5	5.894	4.918	1122338	2264540	26.198	25.294
21) L5 AR-1248-1	4.913	4.078	1455981	2282308	35.448	34.109
22) L5 AR-1248-2	5.208	4.327	877467	1416992	14.487	14.787
23) L5 AR-1248-3	5.420	4.369	1055992	1573422	15.058	15.937
24) L5 AR-1248-4	5.853	4.545	975105	1682637	13.482	14.182
25) L5 AR-1248-5	5.894	4.960	1122338	2198584	15.845	18.398
26) L6 AR-1254-1	5.824	4.918	790978	2264540	9.897	12.643 #
27) L6 AR-1254-2	6.063	5.078	1019487	673222	8.541	4.305 #
28) L6 AR-1254-3	6.454	5.500	550618	900145	4.652	3.467 #
29) L6 AR-1254-4	6.763	5.749	256336	674087	3.079	4.023 #
30) L6 AR-1254-5	7.221	6.191	147828	377455	1.645	1.518
31) L7 AR-1260-1	6.636	5.637	177487	1339772	1.719	6.886 #
32) L7 AR-1260-2	6.924	5.818f	51953	270456	0.474	1.138 #
33) L7 AR-1260-3	7.300	6.008	257504	189257	3.158	0.839 #
34) L7 AR-1260-4	7.531f	0.000	185136	0	2.059	N.D. #
35) L7 AR-1260-5	7.881	6.792	669710	717458	4.133	1.548 #
36) L8 AR-1262-1	7.300	6.267f	257504	628570	2.243	2.415
37) L8 AR-1262-2	7.881	6.792	669710	717458	3.706	1.476 #
38) L8 AR-1262-3	0.000	7.092	0	537716	N.D.	2.706 #
39) L8 AR-1262-4	8.289	7.156	328057	296589	3.251	0.797 #
41) L9 AR-1268-1	0.000	7.092	0	537716	N.D.	0.923 #
42) L9 AR-1268-2	8.289	7.156	328057	296589	1.620	0.551 #

Data Path : Z:\pestpcbsrv\HPCHEM1\ECD\_R\Data\PR081023\  
 Data File : PR062556.D  
 Signal(s) : Signal #1: ECD1A.ch Signal #2: ECD2B.ch  
 Acq On : 09 Aug 2023 10:43  
 Operator : YP\AJ  
 Sample : 03572-08  
 Misc : AR1232 LOQ 50 PPB  
 ALS Vial : 7 Sample Multiplier: 1

Instrument :  
 ECD\_R  
 ClientSampleId :

Integration File signal 1: autoint1.e  
 Integration File signal 2: autoint2.e  
 Quant Time: Aug 09 21:56:31 2023  
 Quant Method : Z:\pestpcbsrv\HPCHEM1\ECD\_R\Method\PR080923.M  
 Quant Title : GC EXTRACTABLES  
 QLast Update : Wed Aug 09 01:27:38 2023  
 Response via : Initial Calibration  
 Integrator: ChemStation

Volume Inj. : 2 µl  
 Signal #1 Phase : ZB-MR1 Signal #2 Phase: ZB-MR2  
 Signal #1 Info : 30Mx0.32mmx 0.50µ Signal #2 Info : 30M x 0.32mm x 0.25µm

	Compound	RT#1	RT#2	Resp#1	Resp#2	ng/ml	ng/ml
43)	L9 AR-1268-3	8.504	7.379	1246071	704343	7.026	1.493 #
45)	L9 AR-1268-5	9.312	7.990	635456	1017949	1.251	0.680 #

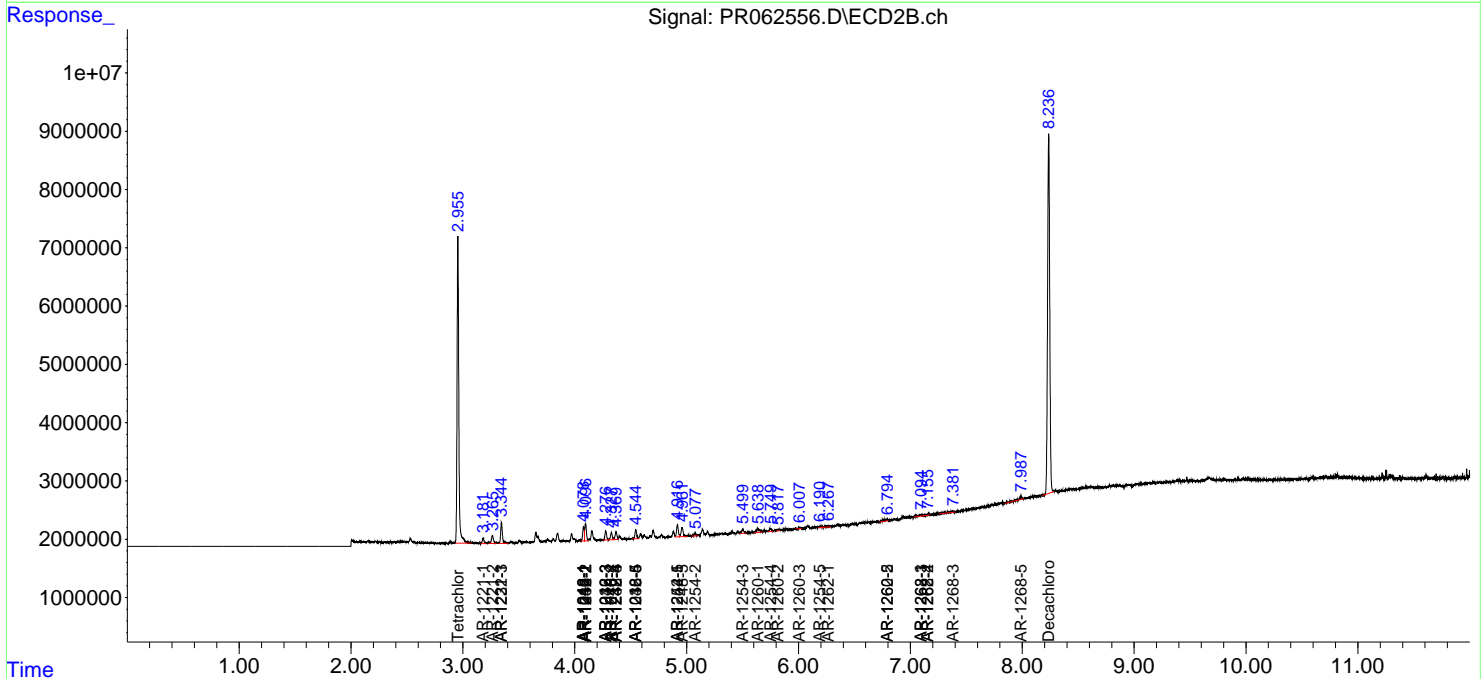
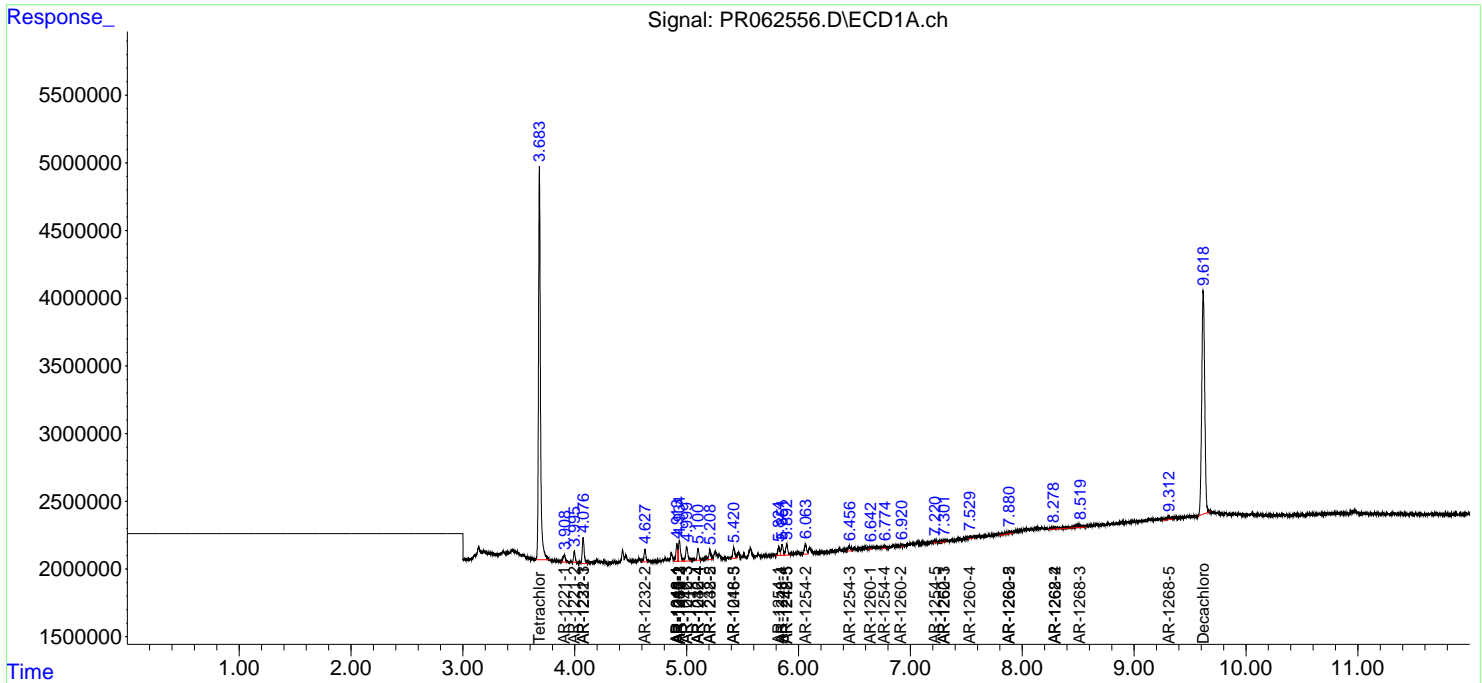
(f)=RT Delta > 1/2 Window (#)=Amounts differ by > 25% (m)=manual int.

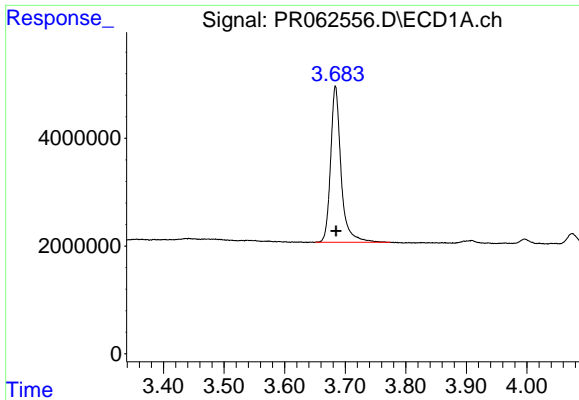
Data Path : Z:\pestpcbsrv\HPCHEM1\ECD\_R\Data\PR081023\  
 Data File : PR062556.D  
 Signal(s) : Signal #1: ECD1A.ch Signal #2: ECD2B.ch  
 Acq On : 09 Aug 2023 10:43  
 Operator : YP\AJ  
 Sample : 03572-08  
 Misc : AR1232 LOQ 50 PPB  
 ALS Vial : 7 Sample Multiplier: 1

Instrument :  
 ECD\_R  
 ClientSampleId :

Integration File signal 1: autoint1.e  
 Integration File signal 2: autoint2.e  
 Quant Time: Aug 09 21:56:31 2023  
 Quant Method : Z:\pestpcbsrv\HPCHEM1\ECD\_R\Method\PR080923.M  
 Quant Title : GC EXTRACTABLES  
 QLast Update : Wed Aug 09 01:27:38 2023  
 Response via : Initial Calibration  
 Integrator: ChemStation

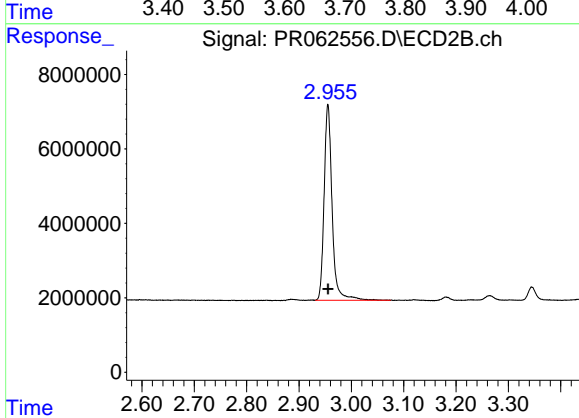
Volume Inj. : 2 µl  
 Signal #1 Phase : ZB-MR1 Signal #2 Phase: ZB-MR2  
 Signal #1 Info : 30Mx0.32mmx 0.50µ Signal #2 Info : 30M x 0.32mm x 0.25µm



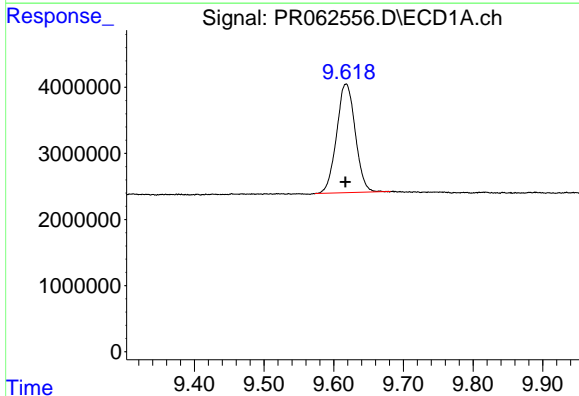


#1 Tetrachloro-m-xylene  
 R.T.: 3.684 min  
 Delta R.T.: -0.001 min  
 Response: 34800066  
 Conc: 17.24 ng/ml

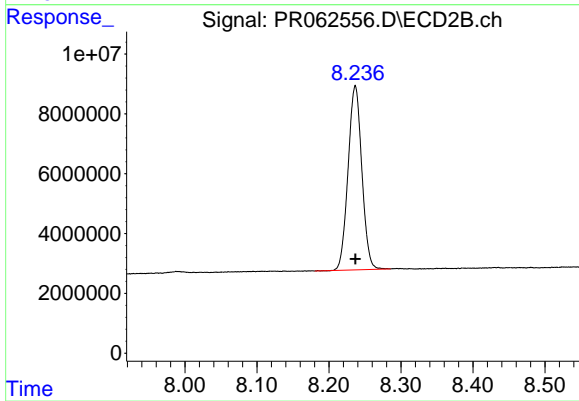
Instrument :  
 ECD\_R  
 ClientSampleId :



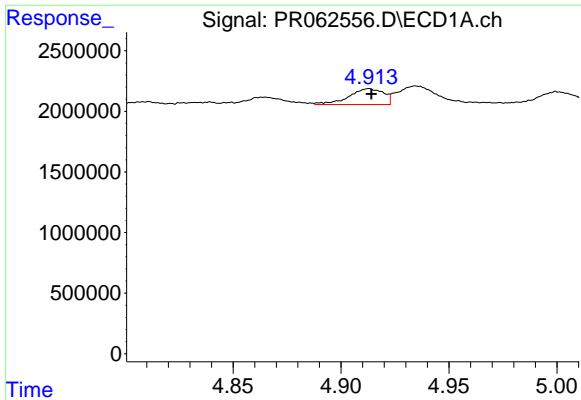
#1 Tetrachloro-m-xylene  
 R.T.: 2.955 min  
 Delta R.T.: 0.000 min  
 Response: 55909938  
 Conc: 19.26 ng/ml



#2 Decachlorobiphenyl  
 R.T.: 9.618 min  
 Delta R.T.: 0.000 min  
 Response: 30654772  
 Conc: 20.58 ng/ml



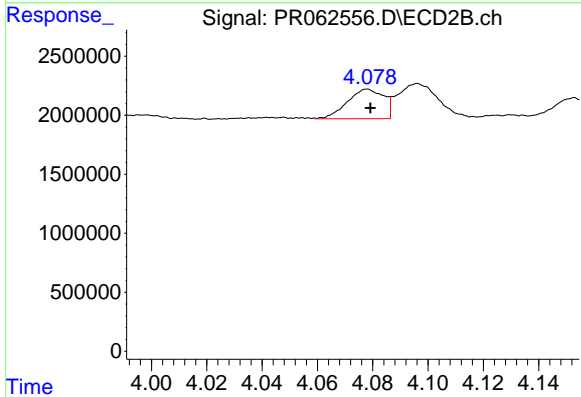
#2 Decachlorobiphenyl  
 R.T.: 8.237 min  
 Delta R.T.: 0.000 min  
 Response: 81630392  
 Conc: 19.67 ng/ml



#3 AR-1016-1

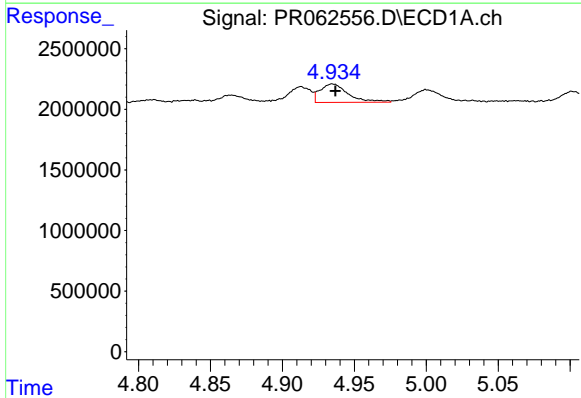
R.T.: 4.913 min  
 Delta R.T.: -0.001 min  
 Response: 1455981  
 Conc: 21.68 ng/ml

Instrument :  
 ECD\_R  
 ClientSampleId :



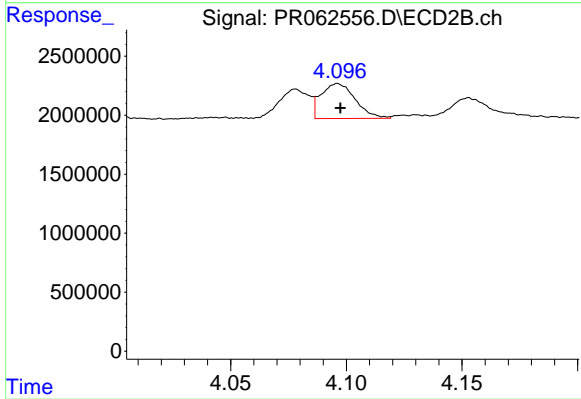
#3 AR-1016-1

R.T.: 4.078 min  
 Delta R.T.: -0.001 min  
 Response: 2282308  
 Conc: 21.04 ng/ml



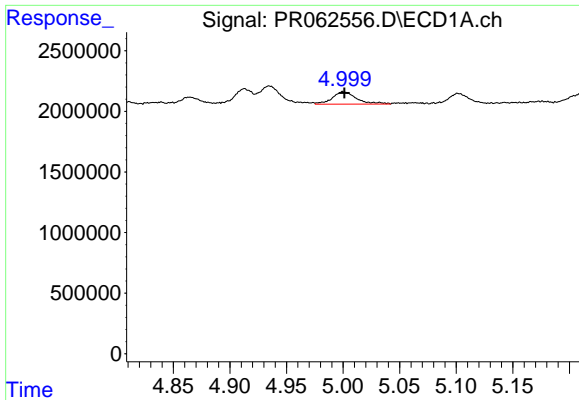
#4 AR-1016-2

R.T.: 4.935 min  
 Delta R.T.: -0.002 min  
 Response: 2080923  
 Conc: 21.55 ng/ml



#4 AR-1016-2

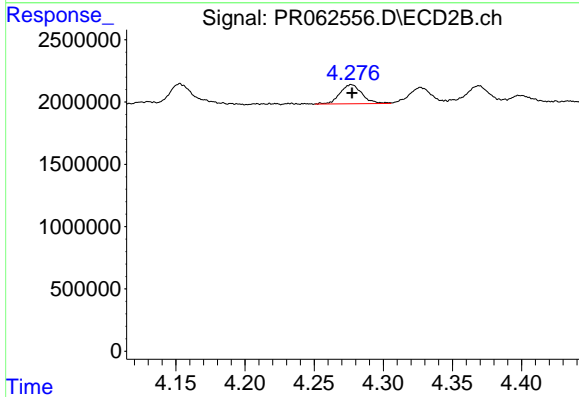
R.T.: 4.096 min  
 Delta R.T.: -0.001 min  
 Response: 3066308  
 Conc: 20.08 ng/ml



#5 AR-1016-3

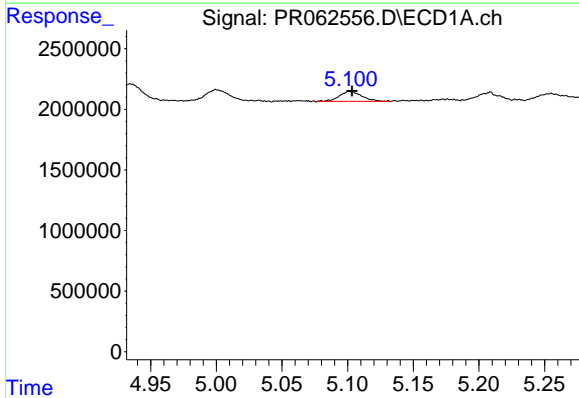
R.T.: 5.000 min  
 Delta R.T.: 0.000 min  
 Response: 1532034  
 Conc: 24.87 ng/ml

Instrument :  
 ECD\_R  
 ClientSampleId :



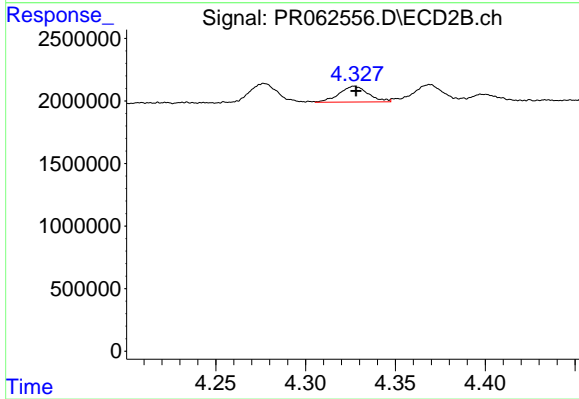
#5 AR-1016-3

R.T.: 4.277 min  
 Delta R.T.: 0.000 min  
 Response: 1677935  
 Conc: 20.03 ng/ml



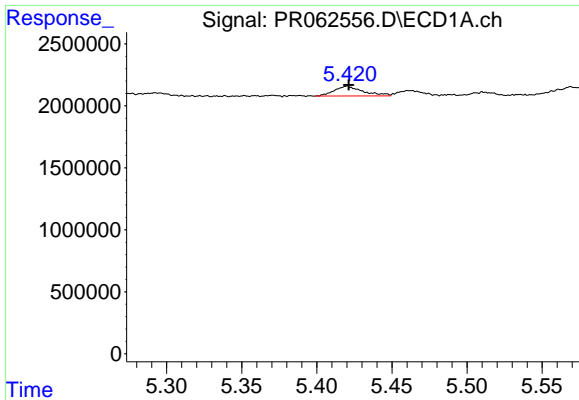
#6 AR-1016-4

R.T.: 5.102 min  
 Delta R.T.: -0.002 min  
 Response: 987797  
 Conc: 20.27 ng/ml



#6 AR-1016-4

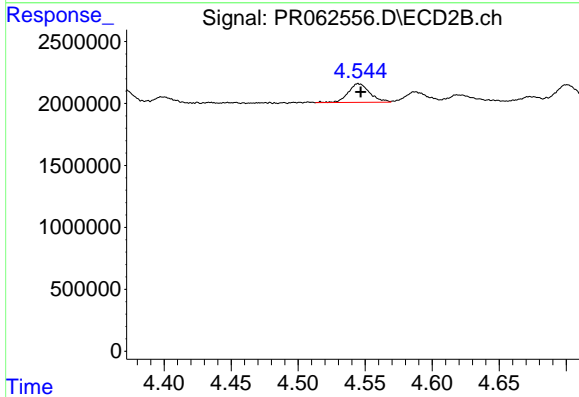
R.T.: 4.327 min  
 Delta R.T.: 0.000 min  
 Response: 1416992  
 Conc: 20.88 ng/ml



#7 AR-1016-5

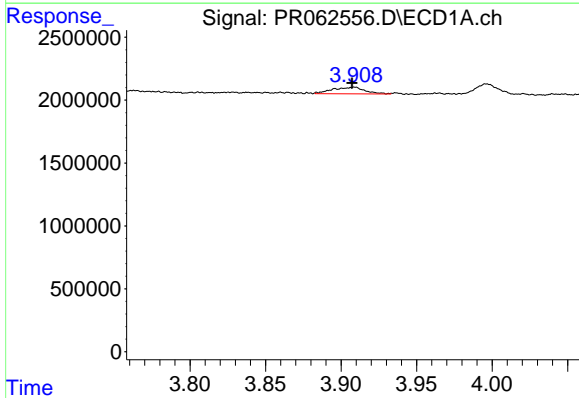
R.T.: 5.420 min  
 Delta R.T.: -0.001 min  
 Response: 1055992  
 Conc: 20.24 ng/ml

Instrument :  
 ECD\_R  
 ClientSampleId :



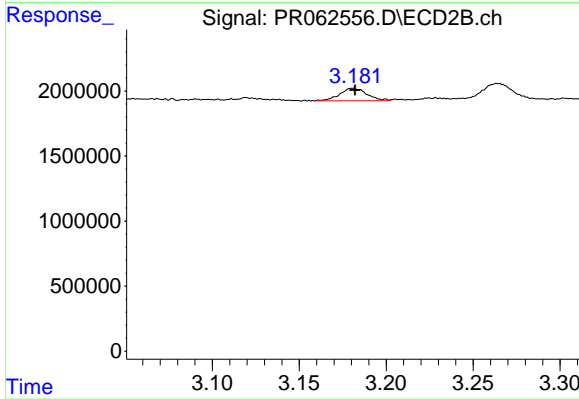
#7 AR-1016-5

R.T.: 4.545 min  
 Delta R.T.: -0.002 min  
 Response: 1682637  
 Conc: 18.49 ng/ml



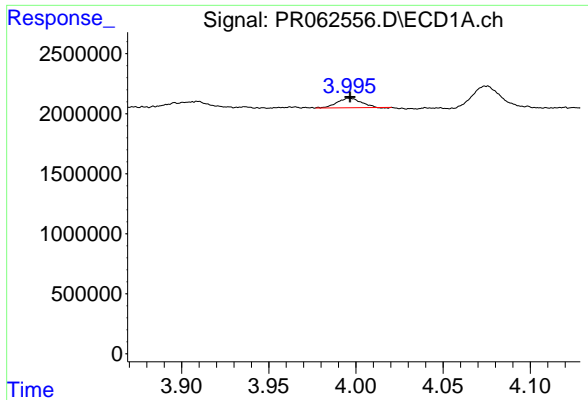
#8 AR-1221-1

R.T.: 3.909 min  
 Delta R.T.: 0.002 min  
 Response: 772611  
 Conc: 31.59 ng/ml



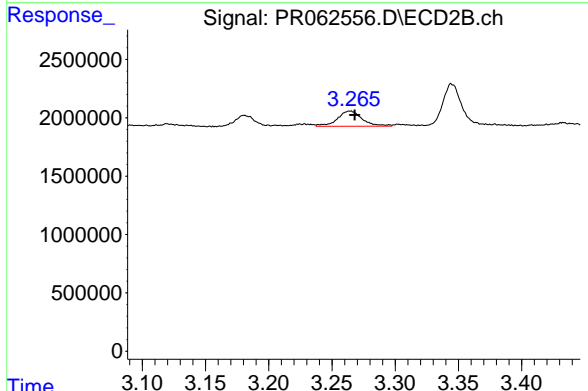
#8 AR-1221-1

R.T.: 3.181 min  
 Delta R.T.: -0.001 min  
 Response: 1042269  
 Conc: 27.55 ng/ml

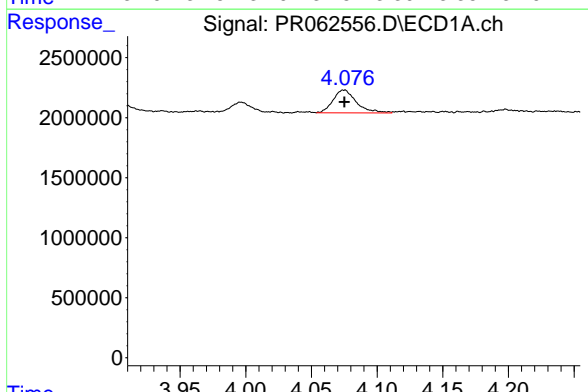


#9 AR-1221-2  
 R.T.: 3.997 min  
 Delta R.T.: 0.000 min  
 Response: 757654  
 Conc: 48.90 ng/ml

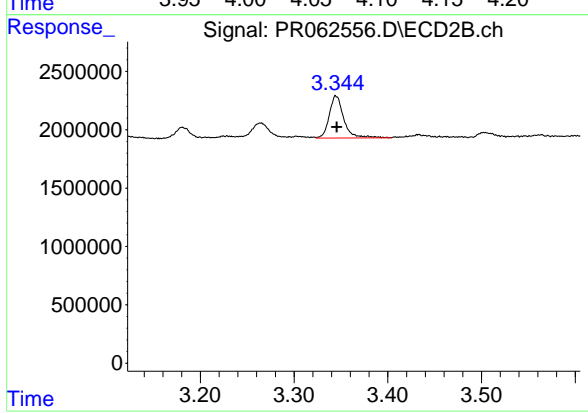
Instrument :  
 ECD\_R  
 ClientSampleId :



#9 AR-1221-2  
 R.T.: 3.264 min  
 Delta R.T.: -0.004 min  
 Response: 1800071  
 Conc: 49.85 ng/ml

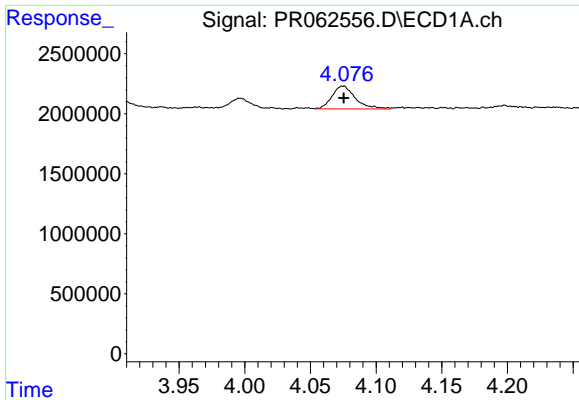


#10 AR-1221-3  
 R.T.: 4.075 min  
 Delta R.T.: 0.000 min  
 Response: 2350094  
 Conc: 39.15 ng/ml



#10 AR-1221-3  
 R.T.: 3.345 min  
 Delta R.T.: 0.000 min  
 Response: 3909037  
 Conc: 43.46 ng/ml

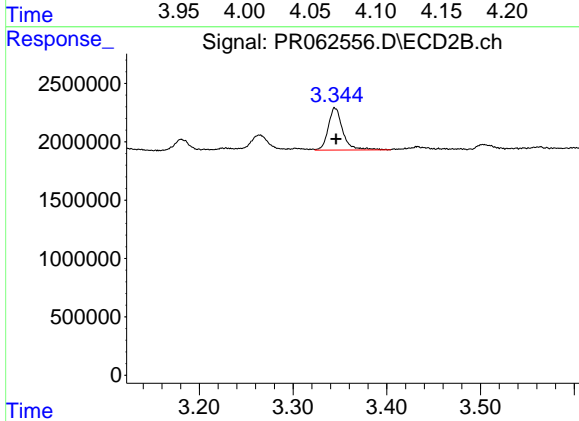




#11 AR-1232-1

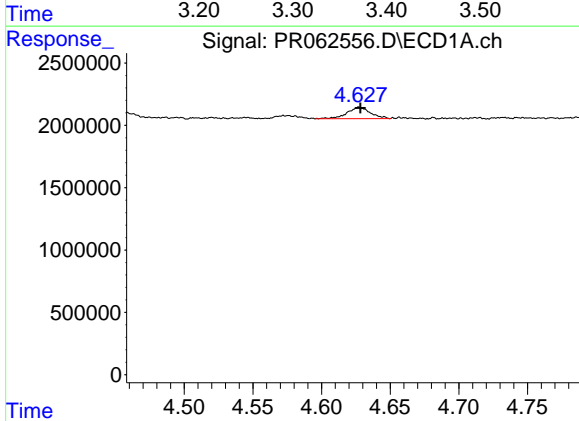
R.T.: 4.075 min  
 Delta R.T.: 0.000 min  
 Response: 2350094  
 Conc: 47.32 ng/ml

Instrument :  
 ECD\_R  
 ClientSampleId :



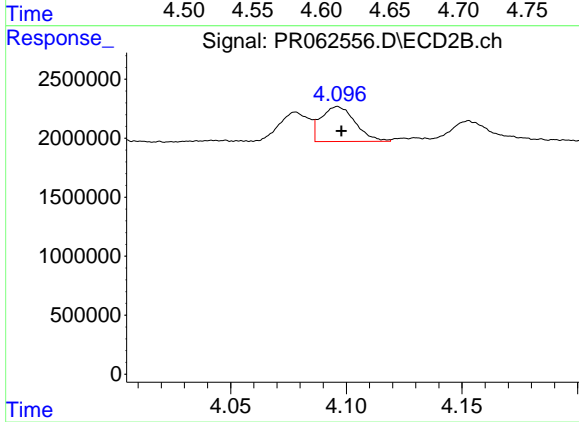
#11 AR-1232-1

R.T.: 3.345 min  
 Delta R.T.: -0.001 min  
 Response: 3909037  
 Conc: 52.19 ng/ml



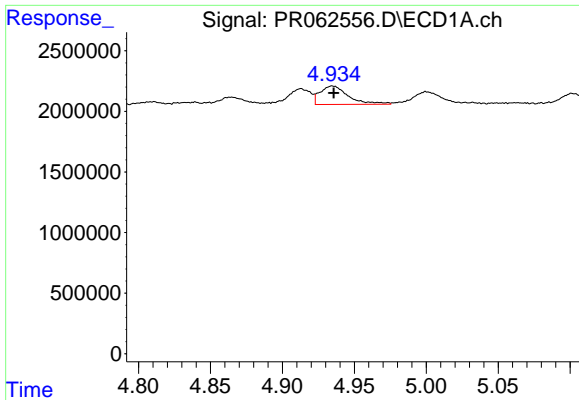
#12 AR-1232-2

R.T.: 4.627 min  
 Delta R.T.: -0.001 min  
 Response: 1086373  
 Conc: 43.99 ng/ml



#12 AR-1232-2

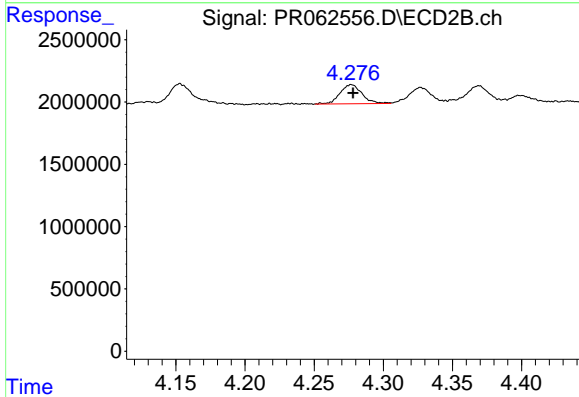
R.T.: 4.096 min  
 Delta R.T.: -0.002 min  
 Response: 3066308  
 Conc: 44.46 ng/ml



#13 AR-1232-3

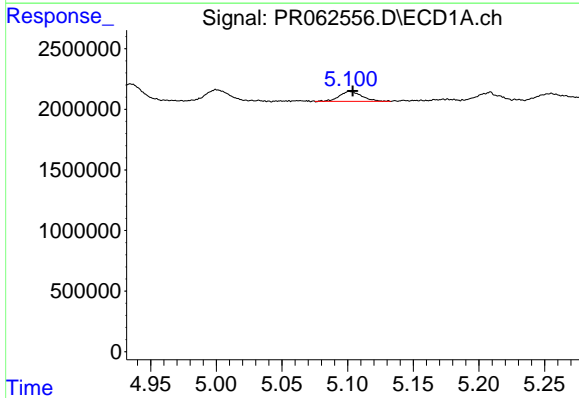
R.T.: 4.935 min  
 Delta R.T.: 0.000 min  
 Response: 2080923  
 Conc: 48.72 ng/ml

Instrument :  
 ECD\_R  
 ClientSampleId :



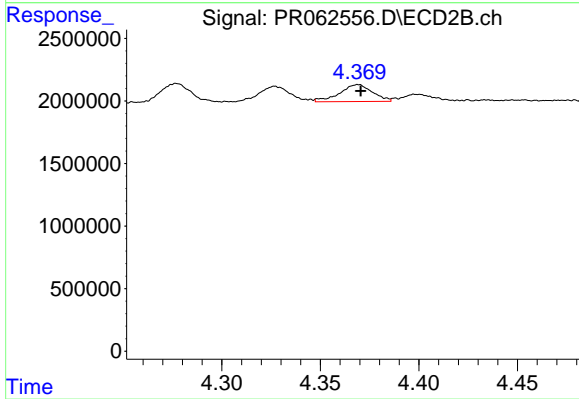
#13 AR-1232-3

R.T.: 4.277 min  
 Delta R.T.: -0.001 min  
 Response: 1677935  
 Conc: 45.22 ng/ml



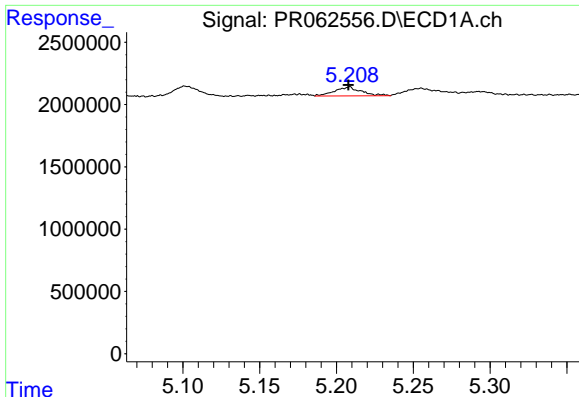
#14 AR-1232-4

R.T.: 5.102 min  
 Delta R.T.: -0.002 min  
 Response: 987797  
 Conc: 46.73 ng/ml



#14 AR-1232-4

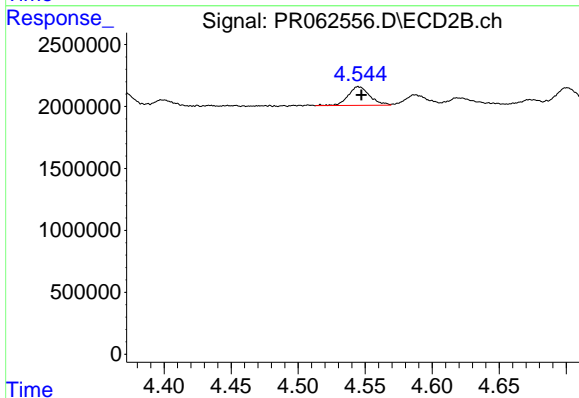
R.T.: 4.369 min  
 Delta R.T.: -0.001 min  
 Response: 1573422  
 Conc: 46.47 ng/ml



#15 AR-1232-5

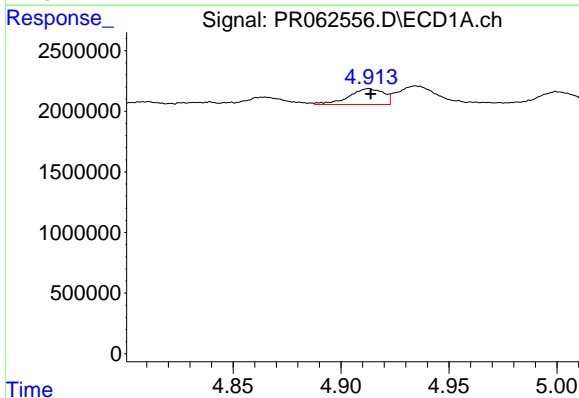
R.T.: 5.208 min  
 Delta R.T.: 0.000 min  
 Response: 877467  
 Conc: 50.46 ng/ml

Instrument :  
 ECD\_R  
 ClientSampleId :



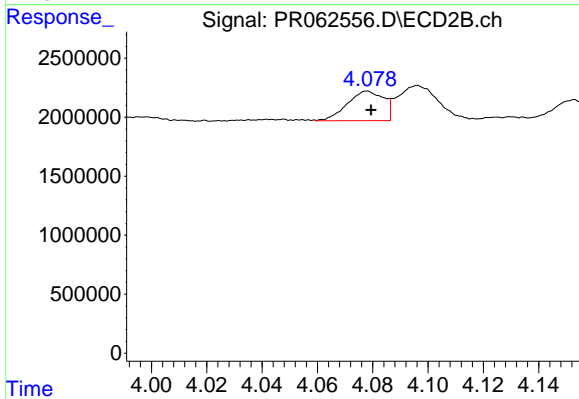
#15 AR-1232-5

R.T.: 4.545 min  
 Delta R.T.: -0.002 min  
 Response: 1682637  
 Conc: 42.82 ng/ml



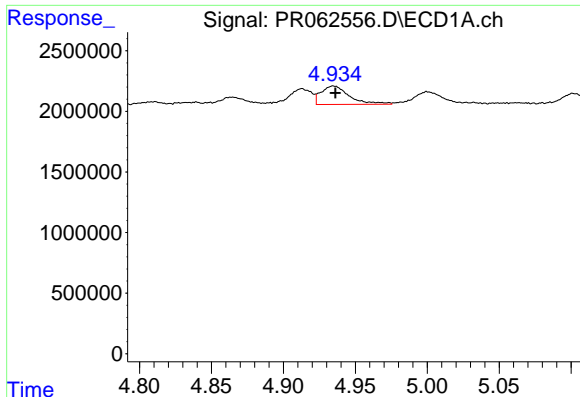
#16 AR-1242-1

R.T.: 4.913 min  
 Delta R.T.: 0.000 min  
 Response: 1455981  
 Conc: 26.12 ng/ml



#16 AR-1242-1

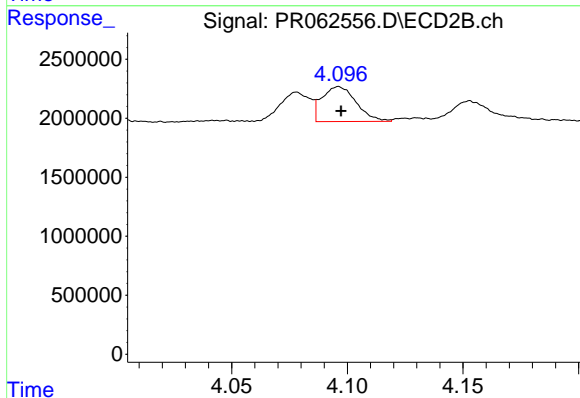
R.T.: 4.078 min  
 Delta R.T.: -0.001 min  
 Response: 2282308  
 Conc: 25.37 ng/ml



#17 AR-1242-2

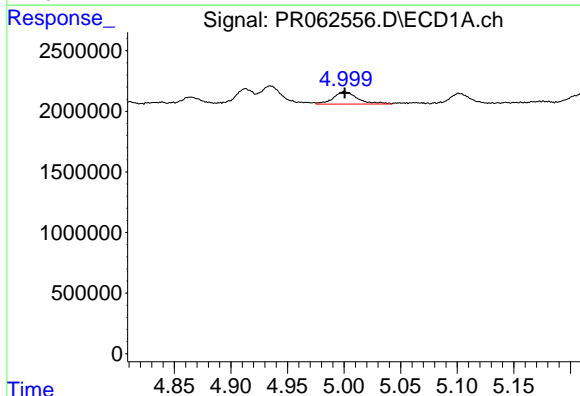
R.T.: 4.935 min  
 Delta R.T.: -0.001 min  
 Response: 2080923  
 Conc: 25.92 ng/ml

Instrument :  
 ECD\_R  
 ClientSampleId :



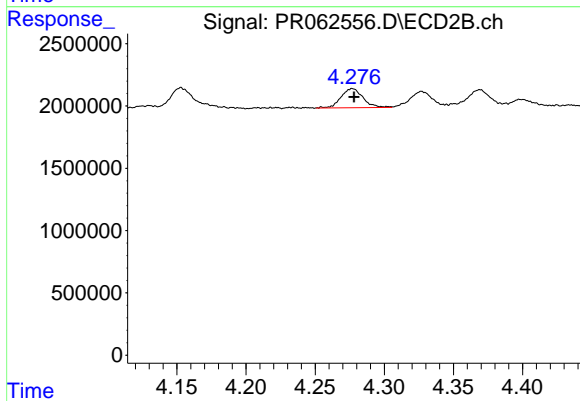
#17 AR-1242-2

R.T.: 4.096 min  
 Delta R.T.: -0.001 min  
 Response: 3066308  
 Conc: 24.46 ng/ml



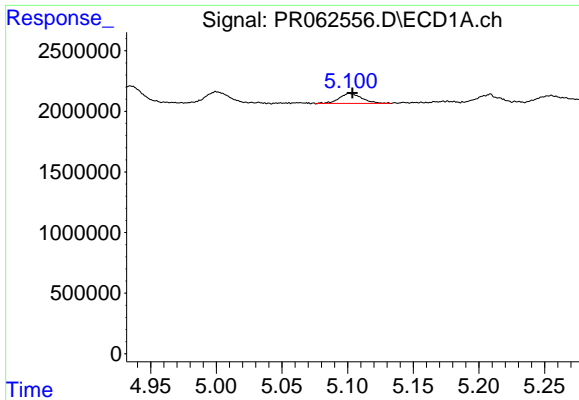
#18 AR-1242-3

R.T.: 5.000 min  
 Delta R.T.: 0.000 min  
 Response: 1532034  
 Conc: 29.75 ng/ml



#18 AR-1242-3

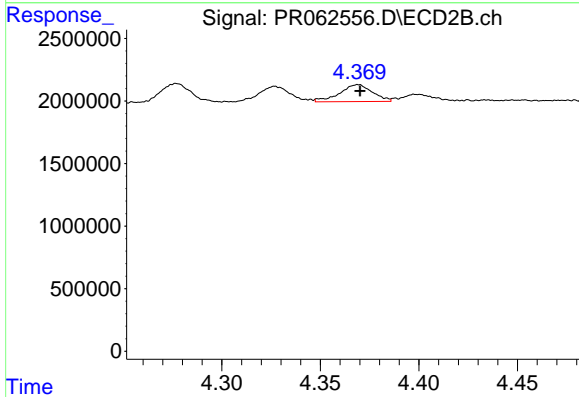
R.T.: 4.277 min  
 Delta R.T.: -0.001 min  
 Response: 1677935  
 Conc: 24.25 ng/ml



#19 AR-1242-4

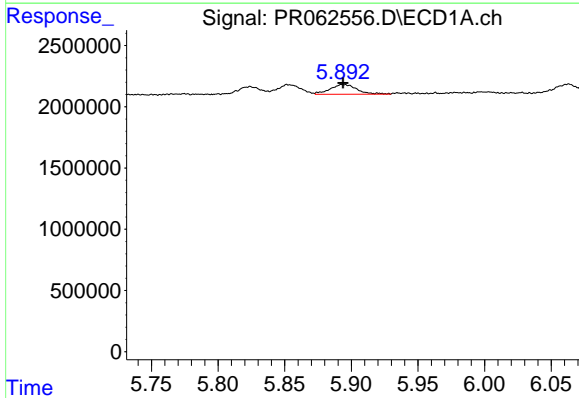
R.T.: 5.102 min  
 Delta R.T.: -0.002 min  
 Response: 987797  
 Conc: 24.44 ng/ml

Instrument :  
 ECD\_R  
 ClientSampleId :



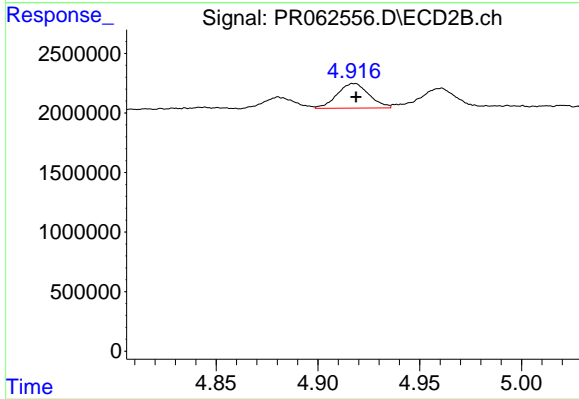
#19 AR-1242-4

R.T.: 4.369 min  
 Delta R.T.: -0.001 min  
 Response: 1573422  
 Conc: 22.94 ng/ml



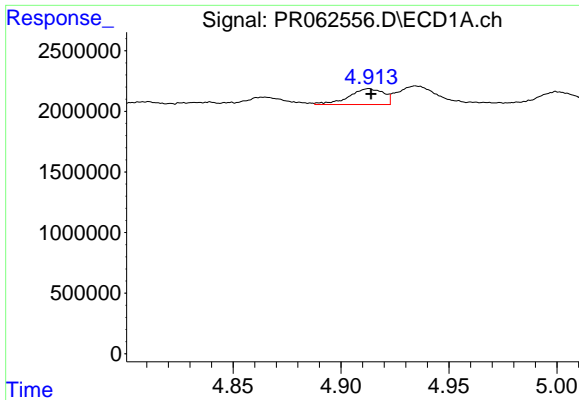
#20 AR-1242-5

R.T.: 5.894 min  
 Delta R.T.: 0.000 min  
 Response: 1122338  
 Conc: 26.20 ng/ml



#20 AR-1242-5

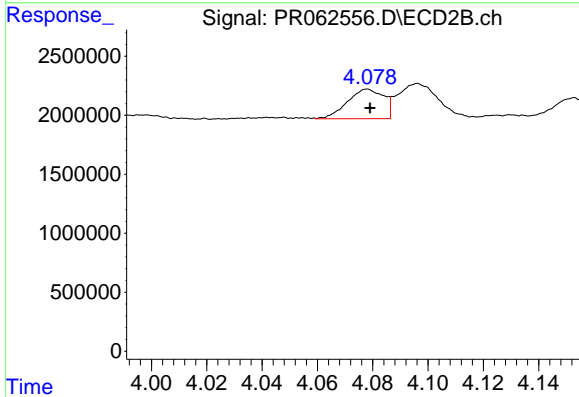
R.T.: 4.918 min  
 Delta R.T.: 0.000 min  
 Response: 2264540  
 Conc: 25.29 ng/ml



#21 AR-1248-1

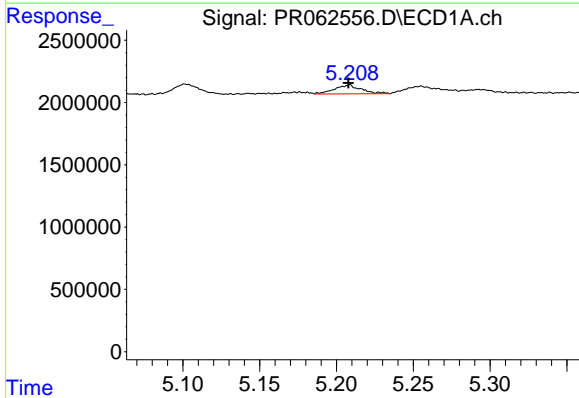
R.T.: 4.913 min  
 Delta R.T.: -0.001 min  
 Response: 1455981  
 Conc: 35.45 ng/ml

Instrument :  
 ECD\_R  
 ClientSampleId :



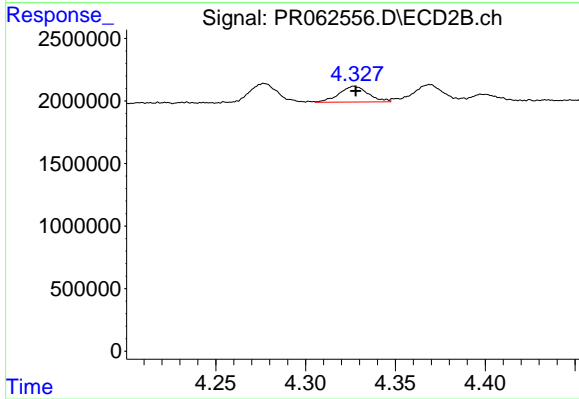
#21 AR-1248-1

R.T.: 4.078 min  
 Delta R.T.: 0.000 min  
 Response: 2282308  
 Conc: 34.11 ng/ml



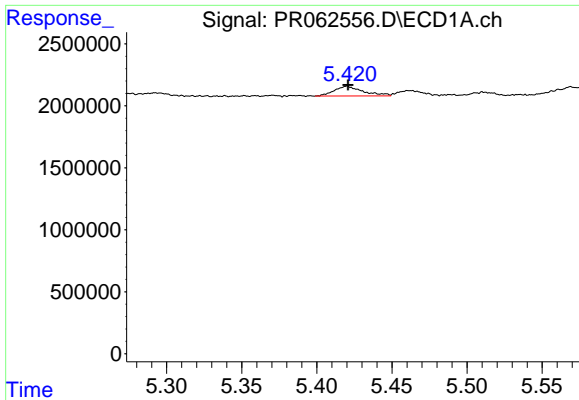
#22 AR-1248-2

R.T.: 5.208 min  
 Delta R.T.: 0.000 min  
 Response: 877467  
 Conc: 14.49 ng/ml



#22 AR-1248-2

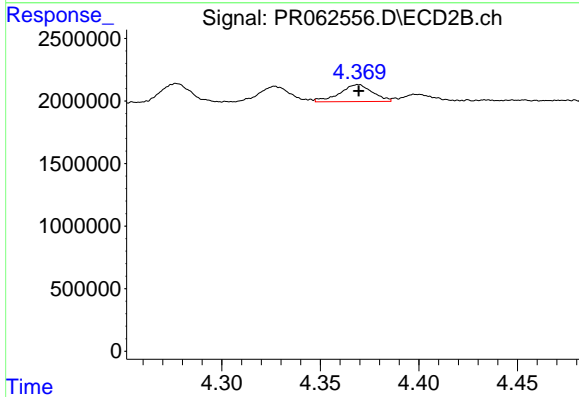
R.T.: 4.327 min  
 Delta R.T.: 0.000 min  
 Response: 1416992  
 Conc: 14.79 ng/ml



#23 AR-1248-3

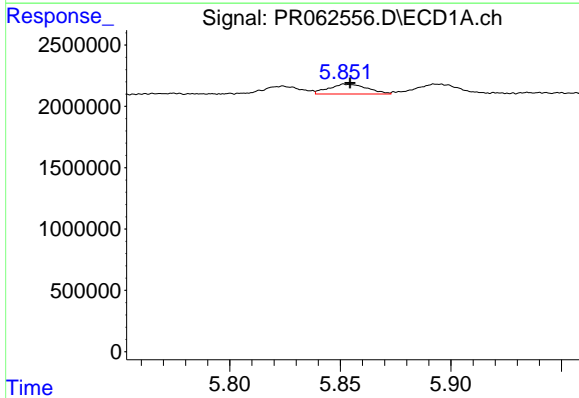
R.T.: 5.420 min  
 Delta R.T.: 0.000 min  
 Response: 1055992  
 Conc: 15.06 ng/ml

Instrument :  
 ECD\_R  
 ClientSampleId :



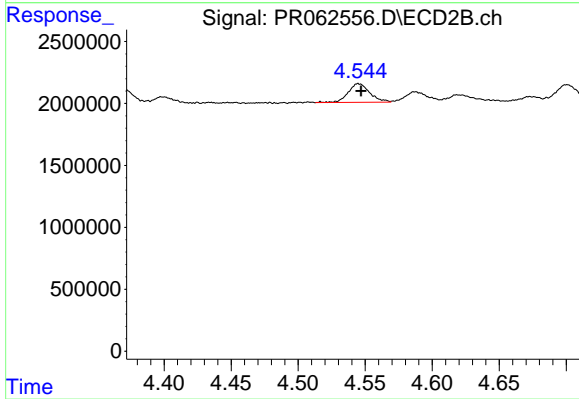
#23 AR-1248-3

R.T.: 4.369 min  
 Delta R.T.: 0.000 min  
 Response: 1573422  
 Conc: 15.94 ng/ml



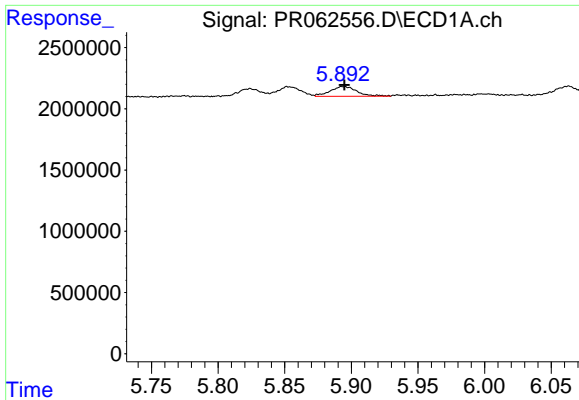
#24 AR-1248-4

R.T.: 5.853 min  
 Delta R.T.: -0.002 min  
 Response: 975105  
 Conc: 13.48 ng/ml



#24 AR-1248-4

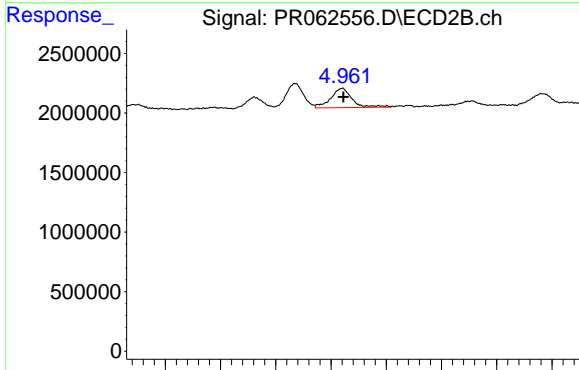
R.T.: 4.545 min  
 Delta R.T.: -0.002 min  
 Response: 1682637  
 Conc: 14.18 ng/ml



#25 AR-1248-5

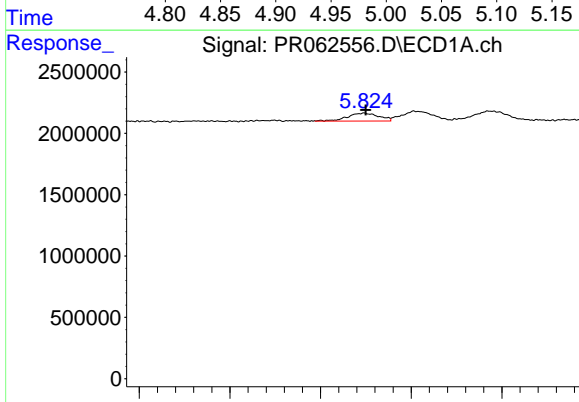
R.T.: 5.894 min  
 Delta R.T.: -0.001 min  
 Response: 1122338  
 Conc: 15.85 ng/ml

Instrument :  
 ECD\_R  
 ClientSampleId :



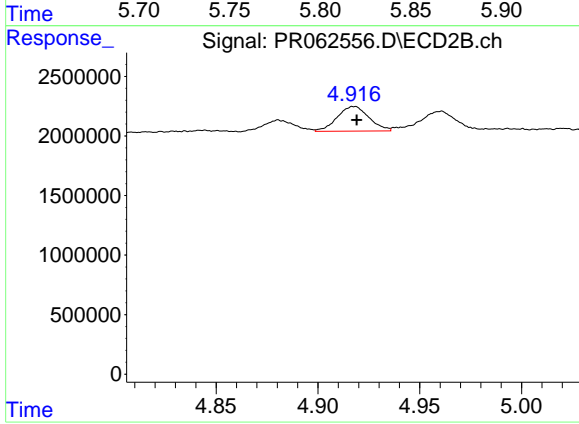
#25 AR-1248-5

R.T.: 4.960 min  
 Delta R.T.: -0.001 min  
 Response: 2198584  
 Conc: 18.40 ng/ml



#26 AR-1254-1

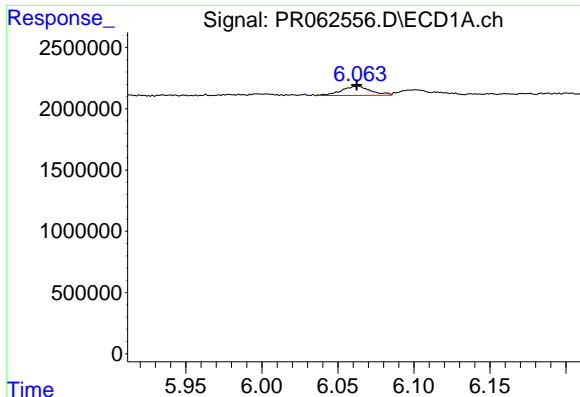
R.T.: 5.824 min  
 Delta R.T.: 0.000 min  
 Response: 790978  
 Conc: 9.90 ng/ml



#26 AR-1254-1

R.T.: 4.918 min  
 Delta R.T.: -0.001 min  
 Response: 2264540  
 Conc: 12.64 ng/ml

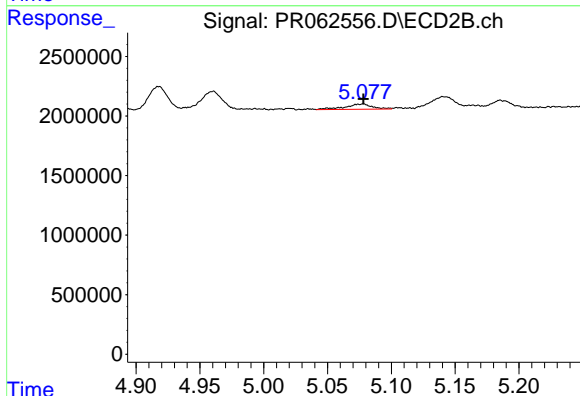




#27 AR-1254-2

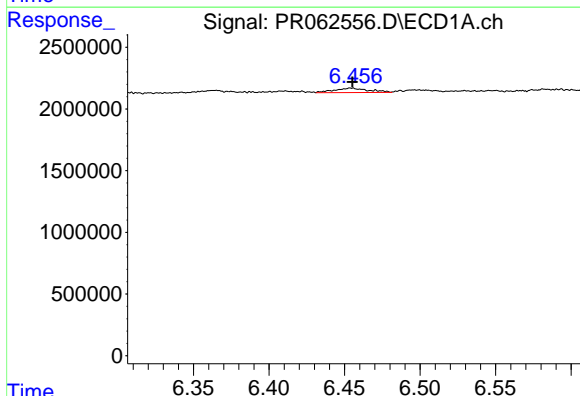
R.T.: 6.063 min  
 Delta R.T.: 0.000 min  
 Response: 1019487  
 Conc: 8.54 ng/ml

Instrument :  
 ECD\_R  
 ClientSampleId :



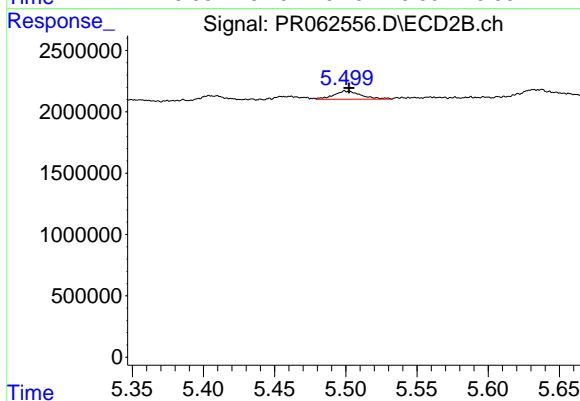
#27 AR-1254-2

R.T.: 5.078 min  
 Delta R.T.: 0.000 min  
 Response: 673222  
 Conc: 4.30 ng/ml



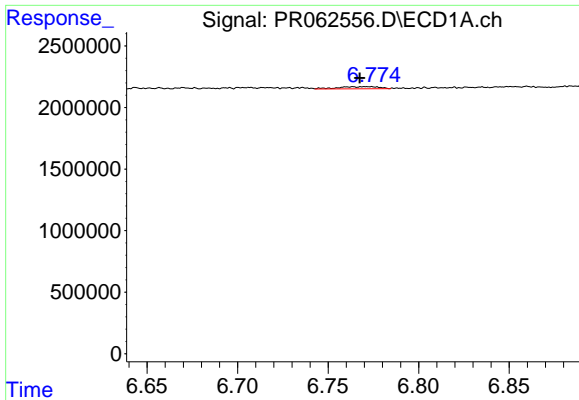
#28 AR-1254-3

R.T.: 6.454 min  
 Delta R.T.: 0.000 min  
 Response: 550618  
 Conc: 4.65 ng/ml



#28 AR-1254-3

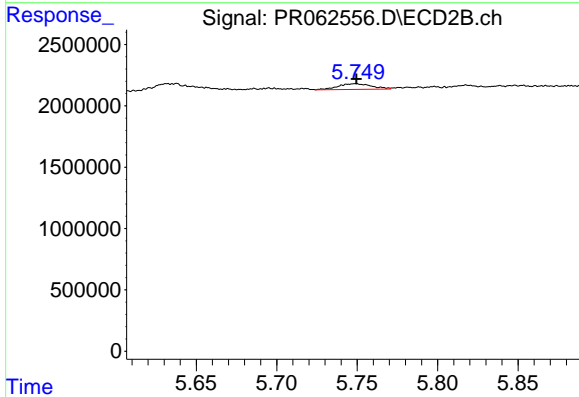
R.T.: 5.500 min  
 Delta R.T.: -0.003 min  
 Response: 900145  
 Conc: 3.47 ng/ml



#29 AR-1254-4

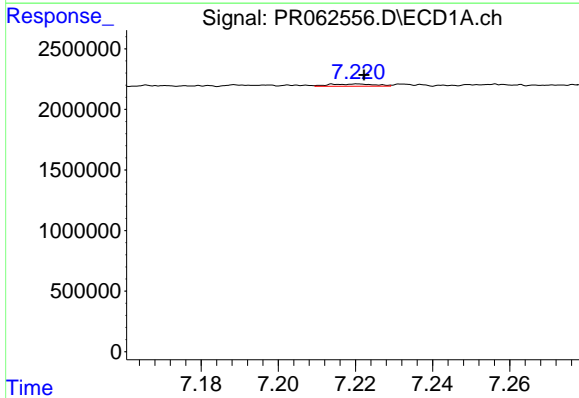
R.T.: 6.763 min  
 Delta R.T.: -0.004 min  
 Response: 256336  
 Conc: 3.08 ng/ml

Instrument :  
 ECD\_R  
 ClientSampleId :



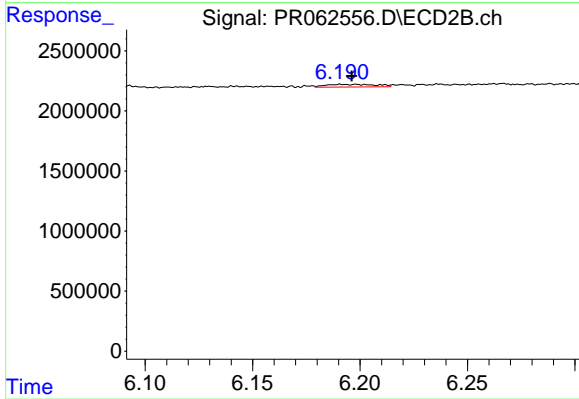
#29 AR-1254-4

R.T.: 5.749 min  
 Delta R.T.: 0.000 min  
 Response: 674087  
 Conc: 4.02 ng/ml



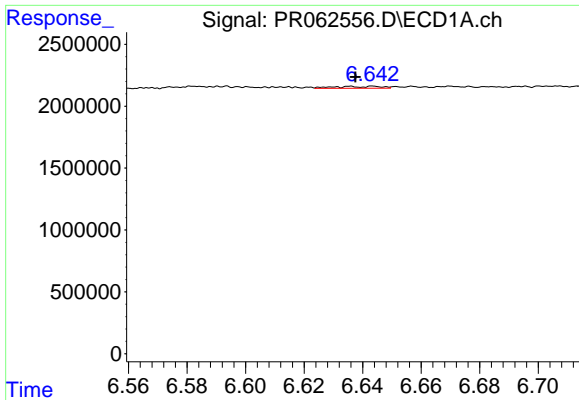
#30 AR-1254-5

R.T.: 7.221 min  
 Delta R.T.: -0.002 min  
 Response: 147828  
 Conc: 1.64 ng/ml



#30 AR-1254-5

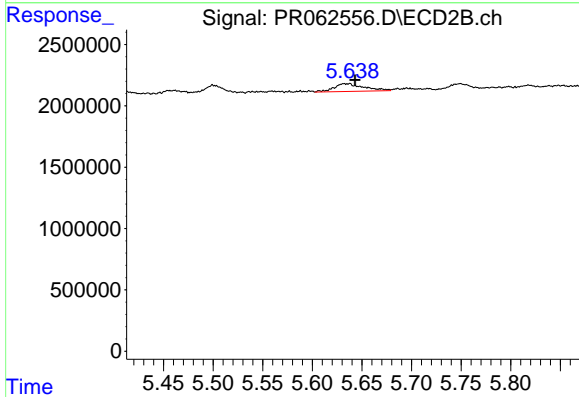
R.T.: 6.191 min  
 Delta R.T.: -0.005 min  
 Response: 377455  
 Conc: 1.52 ng/ml



#31 AR-1260-1

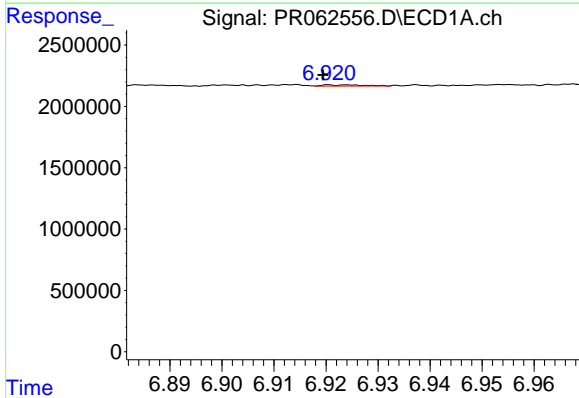
R.T.: 6.636 min  
 Delta R.T.: -0.002 min  
 Response: 177487  
 Conc: 1.72 ng/ml

Instrument :  
 ECD\_R  
 ClientSampleId :



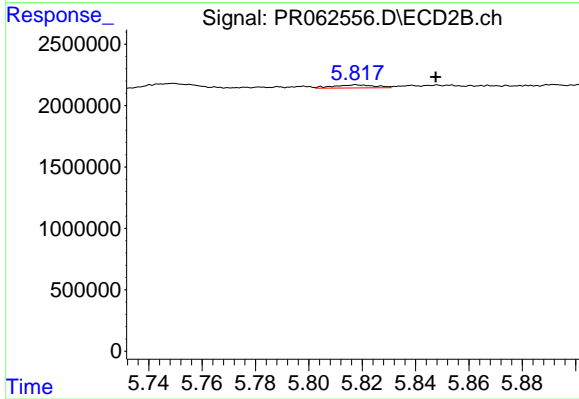
#31 AR-1260-1

R.T.: 5.637 min  
 Delta R.T.: -0.006 min  
 Response: 1339772  
 Conc: 6.89 ng/ml



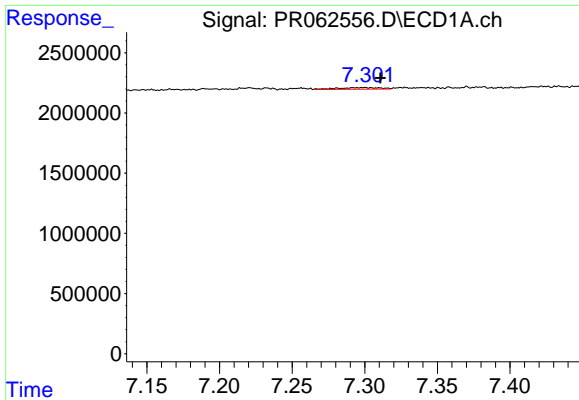
#32 AR-1260-2

R.T.: 6.924 min  
 Delta R.T.: 0.005 min  
 Response: 51953  
 Conc: 0.47 ng/ml



#32 AR-1260-2

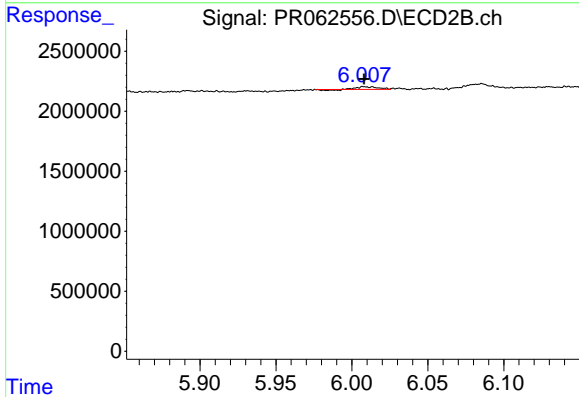
R.T.: 5.818 min  
 Delta R.T.: -0.030 min  
 Response: 270456  
 Conc: 1.14 ng/ml



#33 AR-1260-3

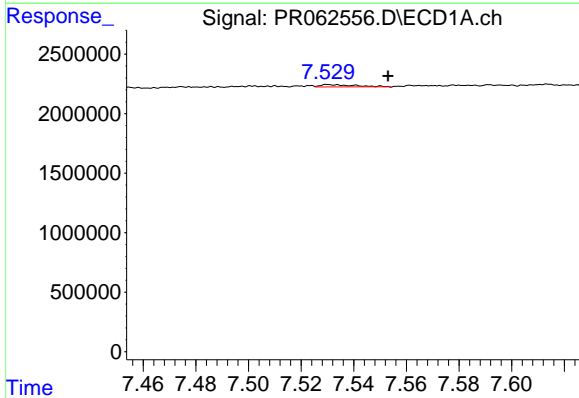
R.T.: 7.300 min  
 Delta R.T.: -0.011 min  
 Response: 257504  
 Conc: 3.16 ng/ml

Instrument :  
 ECD\_R  
 ClientSampleId :



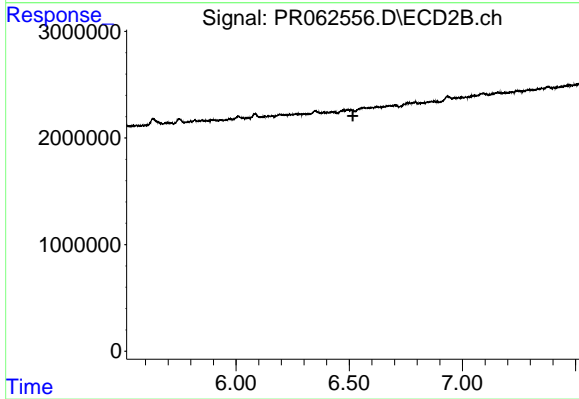
#33 AR-1260-3

R.T.: 6.008 min  
 Delta R.T.: 0.000 min  
 Response: 189257  
 Conc: 0.84 ng/ml



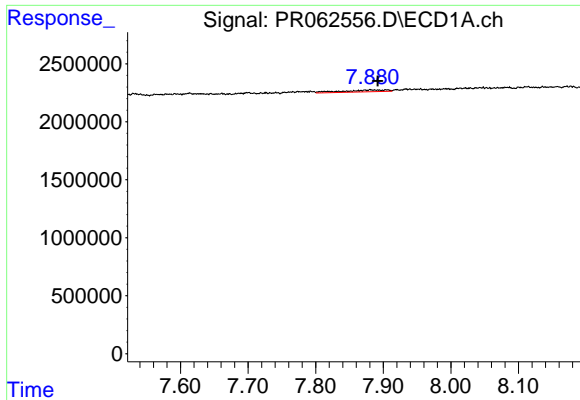
#34 AR-1260-4

R.T.: 7.531 min  
 Delta R.T.: -0.022 min  
 Response: 185136  
 Conc: 2.06 ng/ml



#34 AR-1260-4

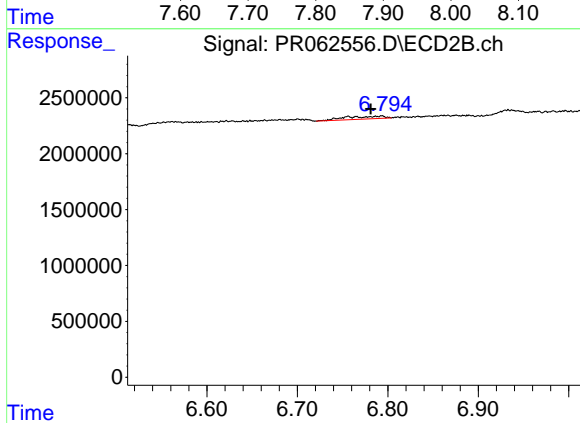
R.T.: 0.000 min  
 Exp R.T. : 6.516 min  
 Response: 0  
 Conc: N.D.



#35 AR-1260-5

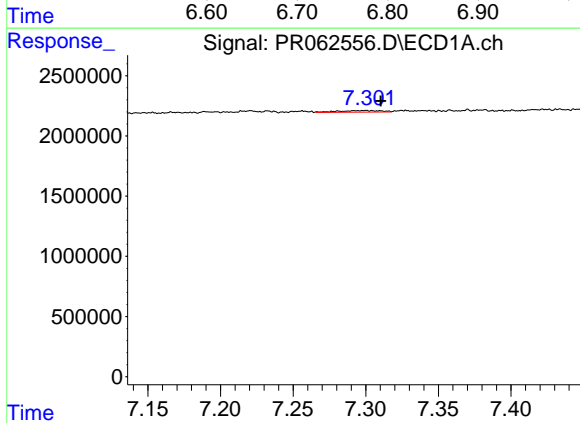
R.T.: 7.881 min  
 Delta R.T.: -0.011 min  
 Response: 669710  
 Conc: 4.13 ng/ml

Instrument :  
 ECD\_R  
 ClientSampleId :



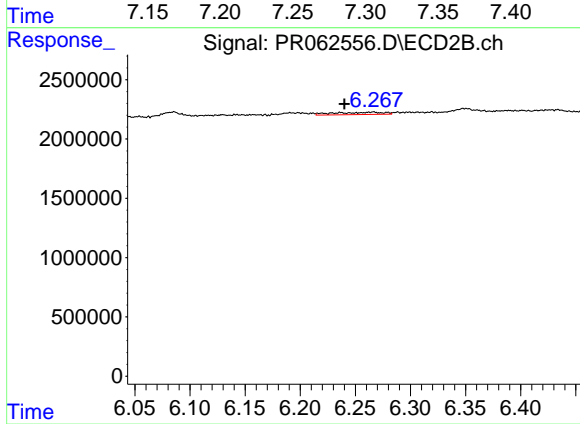
#35 AR-1260-5

R.T.: 6.792 min  
 Delta R.T.: 0.011 min  
 Response: 717458  
 Conc: 1.55 ng/ml



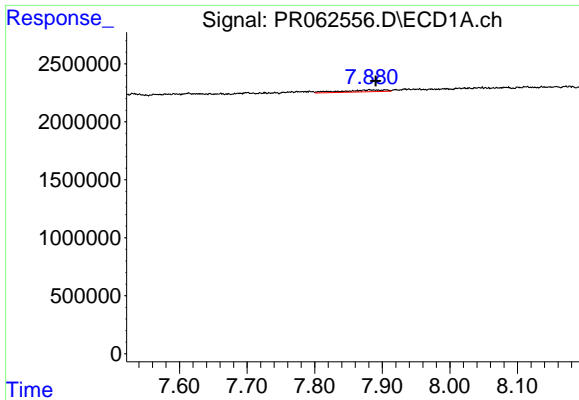
#36 AR-1262-1

R.T.: 7.300 min  
 Delta R.T.: -0.010 min  
 Response: 257504  
 Conc: 2.24 ng/ml



#36 AR-1262-1

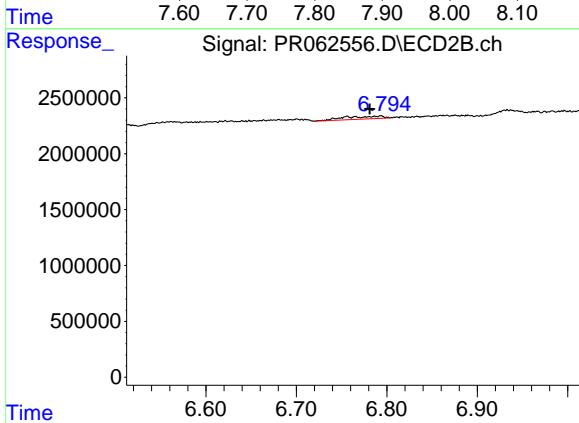
R.T.: 6.267 min  
 Delta R.T.: 0.027 min  
 Response: 628570  
 Conc: 2.41 ng/ml



#37 AR-1262-2

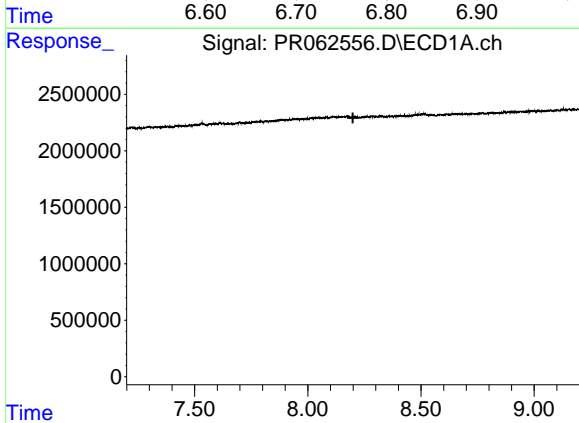
R.T.: 7.881 min  
 Delta R.T.: -0.009 min  
 Response: 669710  
 Conc: 3.71 ng/ml

Instrument :  
 ECD\_R  
 ClientSampleId :



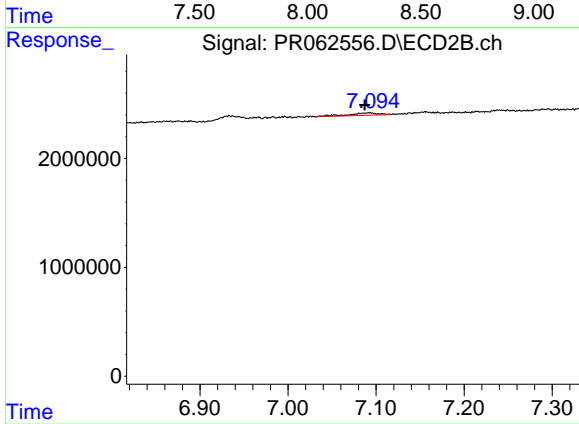
#37 AR-1262-2

R.T.: 6.792 min  
 Delta R.T.: 0.011 min  
 Response: 717458  
 Conc: 1.48 ng/ml



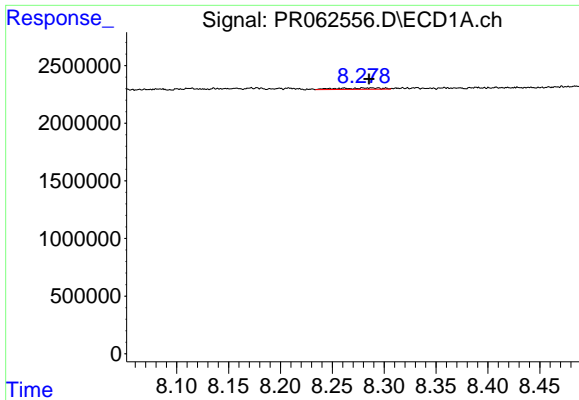
#38 AR-1262-3

R.T.: 0.000 min  
 Exp R.T. : 8.199 min  
 Response: 0  
 Conc: N.D.



#38 AR-1262-3

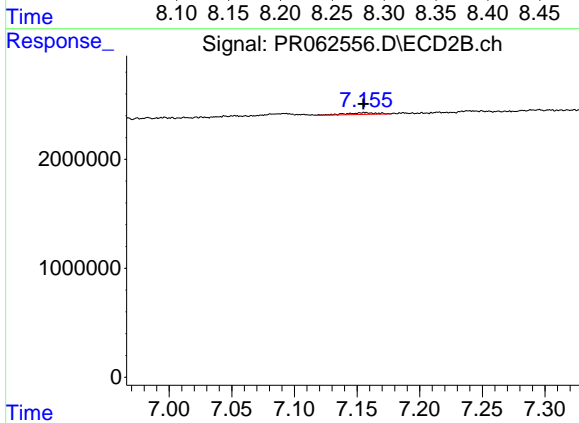
R.T.: 7.092 min  
 Delta R.T.: 0.005 min  
 Response: 537716  
 Conc: 2.71 ng/ml



#39 AR-1262-4

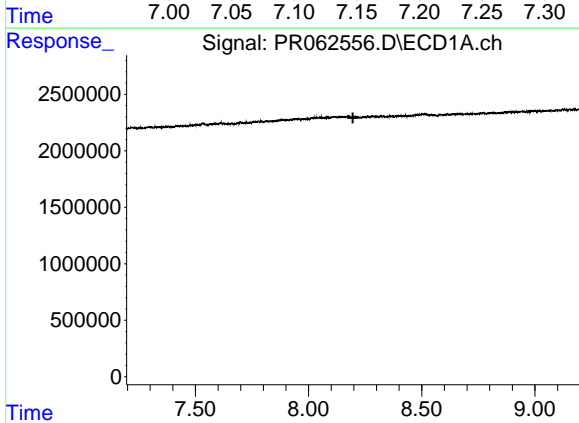
R.T.: 8.289 min  
 Delta R.T.: 0.003 min  
 Response: 328057  
 Conc: 3.25 ng/ml

Instrument : ECD\_R  
 ClientSampleId :



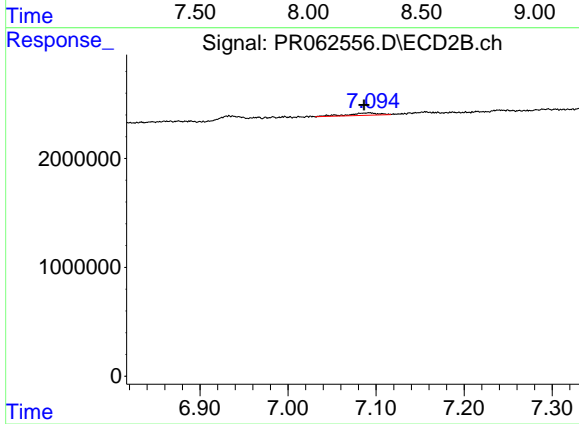
#39 AR-1262-4

R.T.: 7.156 min  
 Delta R.T.: 0.001 min  
 Response: 296589  
 Conc: 0.80 ng/ml



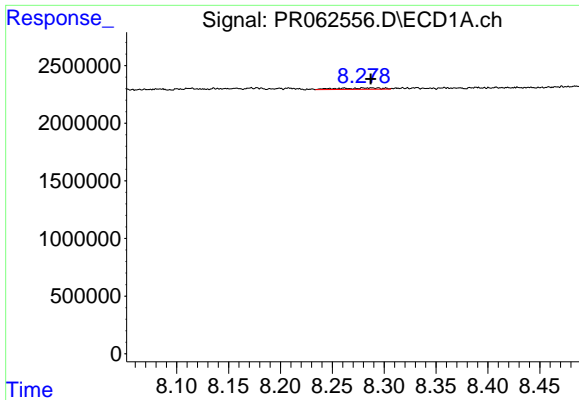
#41 AR-1268-1

R.T.: 0.000 min  
 Exp R.T. : 8.196 min  
 Response: 0  
 Conc: N.D.



#41 AR-1268-1

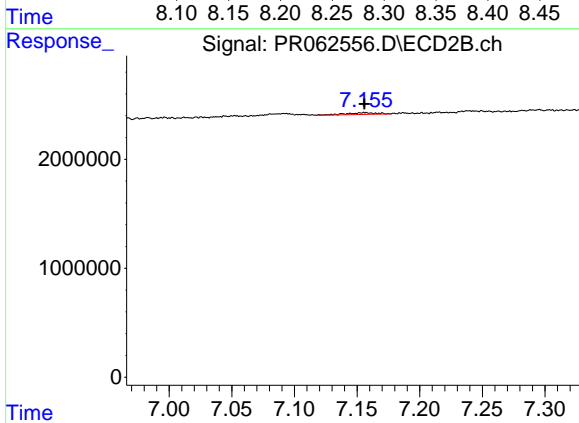
R.T.: 7.092 min  
 Delta R.T.: 0.005 min  
 Response: 537716  
 Conc: 0.92 ng/ml



#42 AR-1268-2

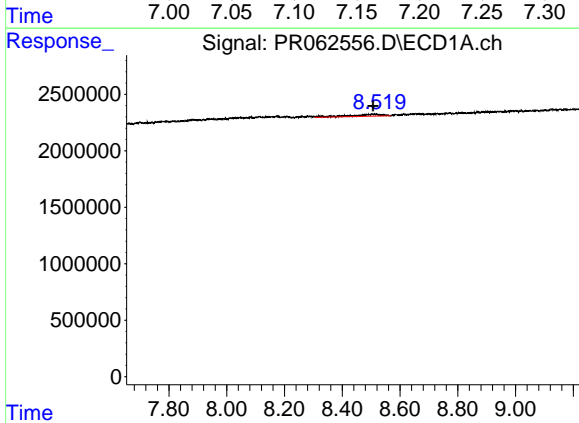
R.T.: 8.289 min  
 Delta R.T.: 0.001 min  
 Response: 328057  
 Conc: 1.62 ng/ml

Instrument :  
 ECD\_R  
 ClientSampleId :



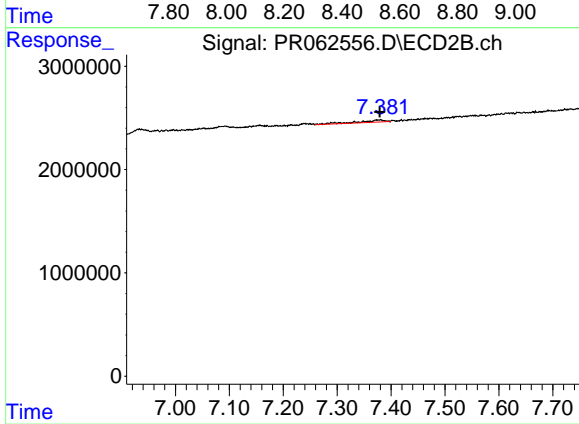
#42 AR-1268-2

R.T.: 7.156 min  
 Delta R.T.: 0.000 min  
 Response: 296589  
 Conc: 0.55 ng/ml



#43 AR-1268-3

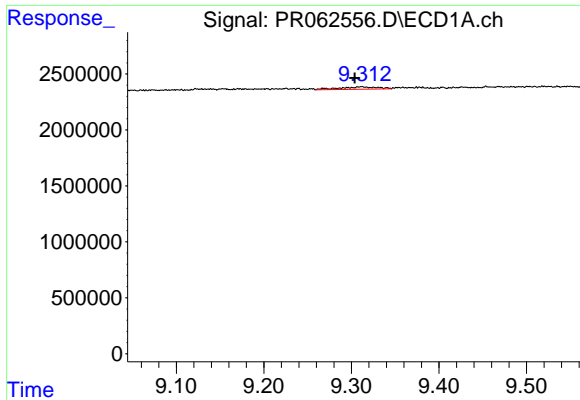
R.T.: 8.504 min  
 Delta R.T.: -0.002 min  
 Response: 1246071  
 Conc: 7.03 ng/ml



#43 AR-1268-3

R.T.: 7.379 min  
 Delta R.T.: 0.000 min  
 Response: 704343  
 Conc: 1.49 ng/ml

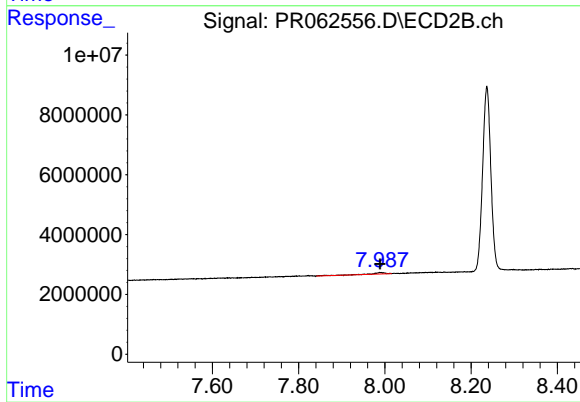




#45 AR-1268-5

R.T.: 9.312 min  
Delta R.T.: 0.008 min  
Response: 635456  
Conc: 1.25 ng/ml

Instrument :  
ECD\_R  
ClientSampleId :



#45 AR-1268-5

R.T.: 7.990 min  
Delta R.T.: 0.000 min  
Response: 1017949  
Conc: 0.68 ng/ml