

Data Path : Z:\pestpcbsrv\HPCHEM1\ECD_R\Data\PR081023\
 Data File : PR062571.D
 Signal(s) : Signal #1: ECD1A.ch Signal #2: ECD2B.ch
 Acq On : 09 Aug 2023 14:27
 Operator : YP\AJ
 Sample : 03572-02
 Misc : AR1262 LOQ 50 PPB
 ALS Vial : 20 Sample Multiplier: 1

Instrument :
 ECD_R
 ClientSampleId :

Integration File signal 1: autoint1.e
 Integration File signal 2: autoint2.e
 Quant Time: Aug 09 22:07:56 2023
 Quant Method : Z:\pestpcbsrv\HPCHEM1\ECD_R\Method\PR080923.M
 Quant Title : GC EXTRACTABLES
 QLast Update : Wed Aug 09 01:27:38 2023
 Response via : Initial Calibration
 Integrator: ChemStation

Volume Inj. : 2 µl
 Signal #1 Phase : ZB-MR1 Signal #2 Phase: ZB-MR2
 Signal #1 Info : 30Mx0.32mmx 0.50µ Signal #2 Info : 30M x 0.32mm x 0.25µm

Compound	RT#1	RT#2	Resp#1	Resp#2	ng/ml	ng/ml

System Monitoring Compounds						
1) SA Tetrachlo...	3.685	2.956	30460277	48703636	15.087	16.777
2) SA Decachlor...	9.617	8.237	27220031	71192793	18.275	17.157
Target Compounds						
3) L1 AR-1016-1	4.913	4.100f	243087	603729	3.620	5.565 #
4) L1 AR-1016-2	4.936	4.100	97298	603729	1.008	3.954 #
5) L1 AR-1016-3	5.002	4.277	171935	146588	2.791	1.750 #
6) L1 AR-1016-4	0.000	4.325	0	339467	N.D.	5.003 #
7) L1 AR-1016-5	0.000	4.546	0	447521	N.D.	4.919 #
8) L2 AR-1221-1	3.892f	0.000	499274	0	20.411	N.D. #
9) L2 AR-1221-2	3.996	3.260	610473	983099	39.404	27.227 #
10) L2 AR-1221-3	4.085	3.345	408179	747524	6.800	8.311
11) L3 AR-1232-1	4.085	3.345	408179	747524	8.219	9.981
12) L3 AR-1232-2	0.000	4.100	0	603729	N.D.	8.753 #
13) L3 AR-1232-3	4.936	4.277	97298	146588	2.278	3.950 #
14) L3 AR-1232-4	0.000	4.371	0	233444	N.D.	6.894 #
15) L3 AR-1232-5	5.208	4.546	90303	447521	5.193	11.389 #
16) L4 AR-1242-1	4.913	4.100f	243087	603729	4.361	6.711 #
17) L4 AR-1242-2	4.936	4.100	97298	603729	1.212	4.815 #
18) L4 AR-1242-3	5.002	4.277	171935	146588	3.338	2.119 #
19) L4 AR-1242-4	0.000	4.371	0	233444	N.D.	3.404 #
20) L4 AR-1242-5	5.892	4.918	153820	1080179	3.590	12.065 #
21) L5 AR-1248-1	4.913	4.100f	243087	603729	5.918	9.023 #
22) L5 AR-1248-2	5.208	4.325	90303	339467	1.491	3.542 #
23) L5 AR-1248-3	0.000	4.371	0	233444	N.D.	2.364 #
24) L5 AR-1248-4	5.825f	4.546	688966	447521	9.526	3.772 #
25) L5 AR-1248-5	5.892	4.949	153820	350726	2.172	2.935 #
26) L6 AR-1254-1	5.825	4.918	688966	1080179	8.620	6.031 #
27) L6 AR-1254-2	6.061	5.077	791359	1414404	6.630	9.044 #
28) L6 AR-1254-3	6.458	5.521f	409685	4216582	3.461	16.240 #
29) L6 AR-1254-4	6.767	5.747	407696	480513	4.898	2.868 #
30) L6 AR-1254-5	7.220	6.195	3094609	5583219	34.426	22.453 #
31) L7 AR-1260-1	6.636	5.642	3443949	6802061	33.359	34.962
32) L7 AR-1260-2	6.919	5.847	3508431	7511737	31.984	31.597
33) L7 AR-1260-3	7.309	6.009	5188059	7193175	63.635	31.895 #
34) L7 AR-1260-4	7.553	6.515	4313876	9474175	47.967	47.827
35) L7 AR-1260-5	7.890	6.780	7397197	18889139	45.651	40.759
36) L8 AR-1262-1	7.309	6.239	5188059	10752424	45.194	41.303
37) L8 AR-1262-2	7.890	6.780	7397197	18889139	40.934	38.861
38) L8 AR-1262-3	8.199	7.087	4794912	8083102	37.798	40.678
39) L8 AR-1262-4	8.285	7.155	3796042	14999654	37.616	40.292
40) L8 AR-1262-5	8.914	7.693	2588631	6741393	40.179	38.016
41) L9 AR-1268-1	8.199	7.087	4794912	8083102	22.110	13.881 #

Data Path : Z:\pestpcbsrv\HPCHEM1\ECD_R\Data\PR081023\
 Data File : PR062571.D
 Signal(s) : Signal #1: ECD1A.ch Signal #2: ECD2B.ch
 Acq On : 09 Aug 2023 14:27
 Operator : YP\AJ
 Sample : 03572-02
 Misc : AR1262 LOQ 50 PPB
 ALS Vial : 20 Sample Multiplier: 1

Instrument :
 ECD_R
 ClientSampleId :

Integration File signal 1: autoint1.e
 Integration File signal 2: autoint2.e
 Quant Time: Aug 09 22:07:56 2023
 Quant Method : Z:\pestpcbsrv\HPCHEM1\ECD_R\Method\PR080923.M
 Quant Title : GC EXTRACTABLES
 QLast Update : Wed Aug 09 01:27:38 2023
 Response via : Initial Calibration
 Integrator: ChemStation

Volume Inj. : 2 µl
 Signal #1 Phase : ZB-MR1 Signal #2 Phase: ZB-MR2
 Signal #1 Info : 30Mx0.32mmx 0.50µ Signal #2 Info : 30M x 0.32mm x 0.25µm

	Compound	RT#1	RT#2	Resp#1	Resp#2	ng/ml	ng/ml
42)	L9 AR-1268-2	8.285	7.155	3796042	14999654	18.748	27.844 #
43)	L9 AR-1268-3	8.502	7.377	1129377	2378196	6.368	5.041
44)	L9 AR-1268-4	8.914	7.693	2588631	6741393	37.393	34.108
45)	L9 AR-1268-5	9.302	7.990	1260411	3284491	2.480	2.194

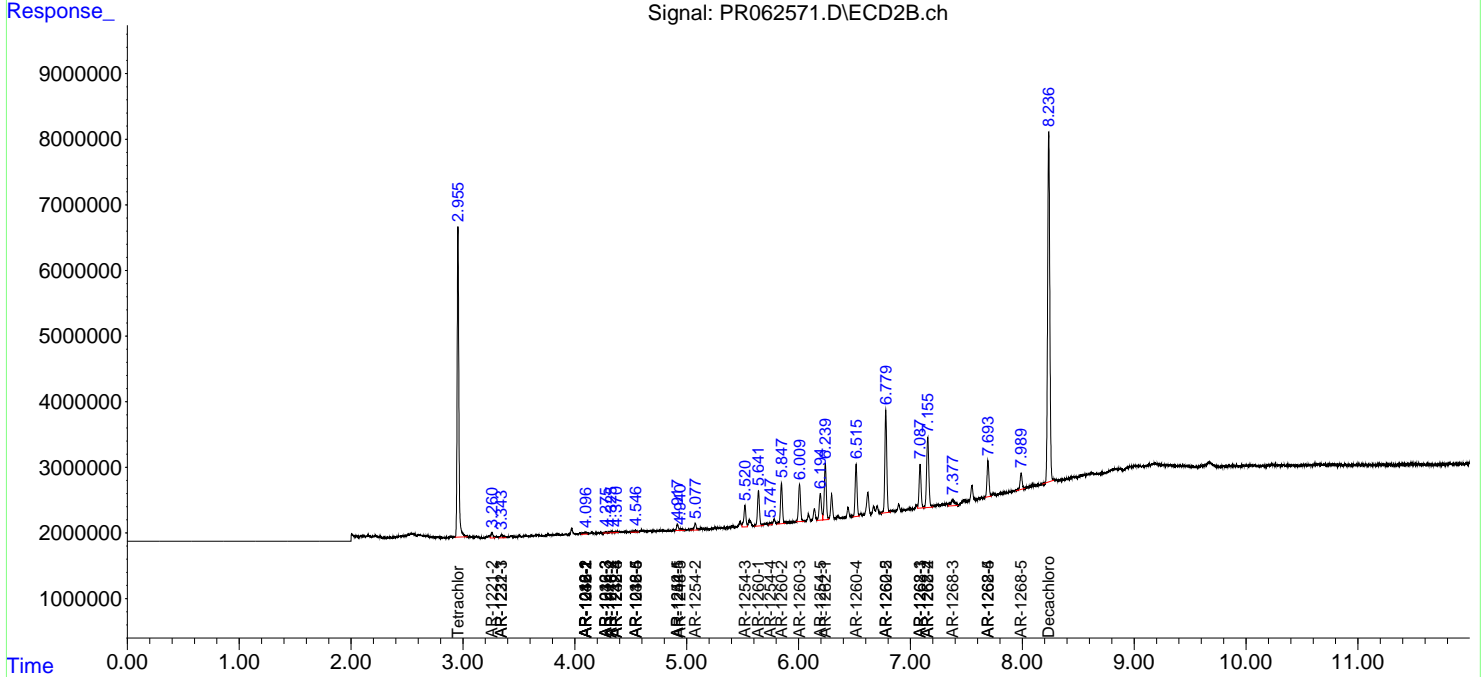
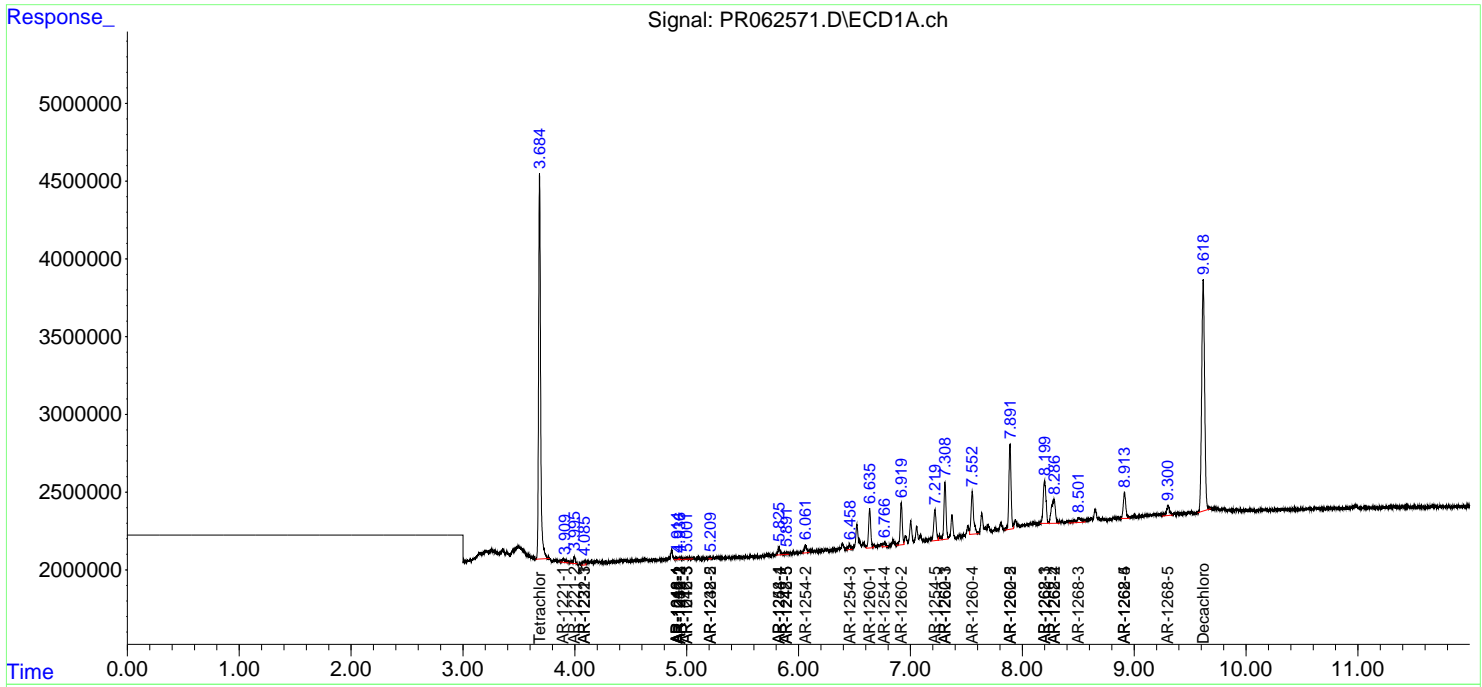
(f)=RT Delta > 1/2 Window (#)=Amounts differ by > 25% (m)=manual int.

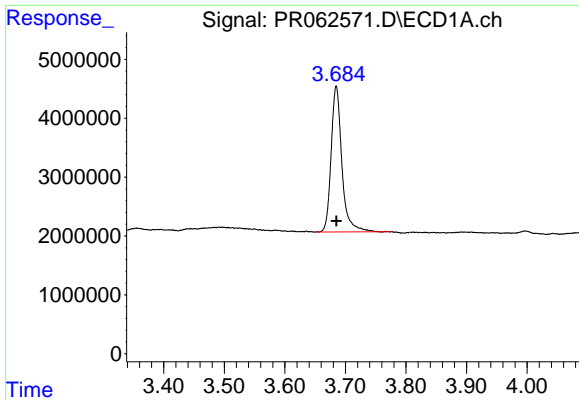
Data Path : Z:\pestpcbsrv\HPCHEM1\ECD_R\Data\PR081023\
 Data File : PR062571.D
 Signal(s) : Signal #1: ECD1A.ch Signal #2: ECD2B.ch
 Acq On : 09 Aug 2023 14:27
 Operator : YP\AJ
 Sample : 03572-02
 Misc : AR1262 LOQ 50 PPB
 ALS Vial : 20 Sample Multiplier: 1

Instrument :
 ECD_R
 ClientSampleId :

Integration File signal 1: autoint1.e
 Integration File signal 2: autoint2.e
 Quant Time: Aug 09 22:07:56 2023
 Quant Method : Z:\pestpcbsrv\HPCHEM1\ECD_R\Method\PR080923.M
 Quant Title : GC EXTRACTABLES
 QLast Update : Wed Aug 09 01:27:38 2023
 Response via : Initial Calibration
 Integrator: ChemStation

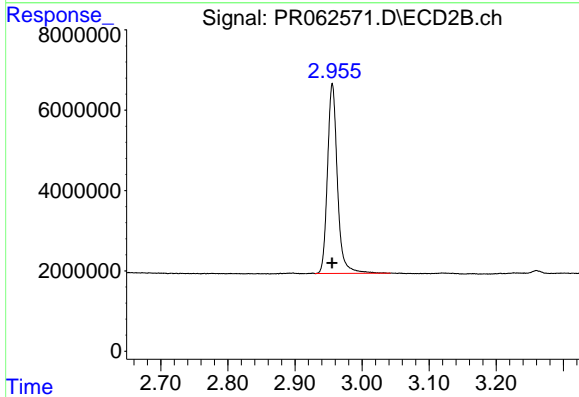
Volume Inj. : 2 µl
 Signal #1 Phase : ZB-MR1 Signal #2 Phase: ZB-MR2
 Signal #1 Info : 30Mx0.32mmx 0.50µ Signal #2 Info : 30M x 0.32mm x 0.25µm



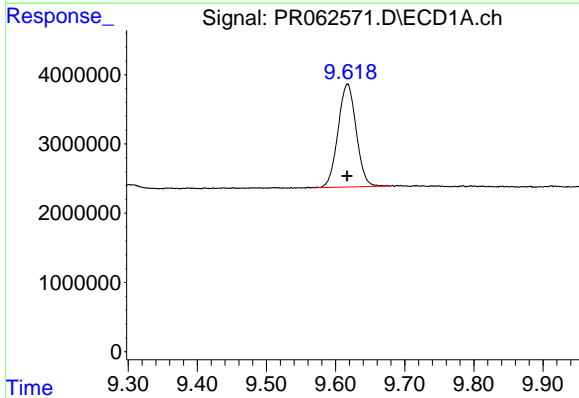


#1 Tetrachloro-m-xylene
R.T.: 3.685 min
Delta R.T.: 0.000 min
Response: 30460277
Conc: 15.09 ng/ml

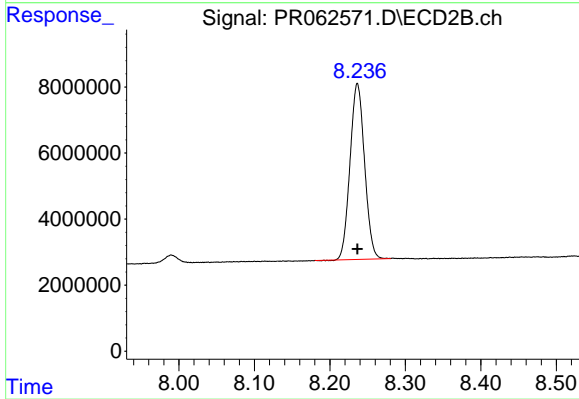
Instrument :
ECD_R
ClientSampleId :



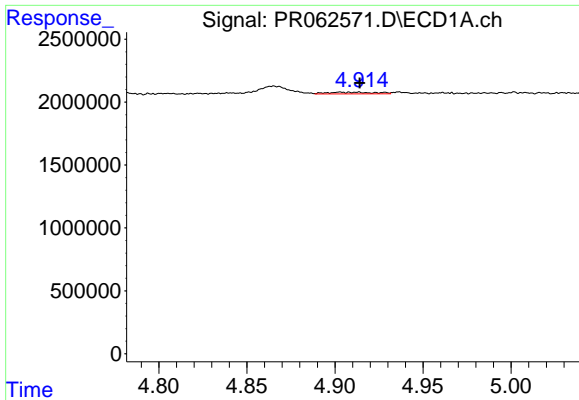
#1 Tetrachloro-m-xylene
R.T.: 2.956 min
Delta R.T.: 0.000 min
Response: 48703636
Conc: 16.78 ng/ml



#2 Decachlorobiphenyl
R.T.: 9.617 min
Delta R.T.: 0.000 min
Response: 27220031
Conc: 18.27 ng/ml



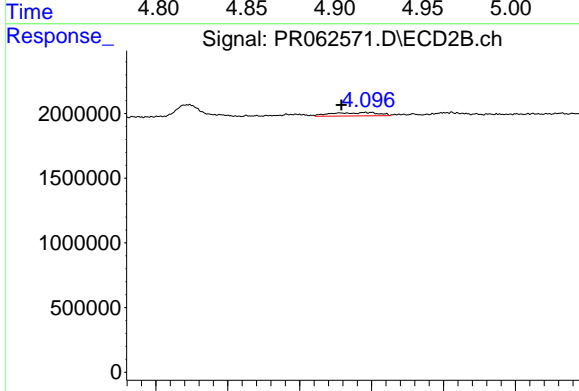
#2 Decachlorobiphenyl
R.T.: 8.237 min
Delta R.T.: 0.000 min
Response: 71192793
Conc: 17.16 ng/ml



#3 AR-1016-1

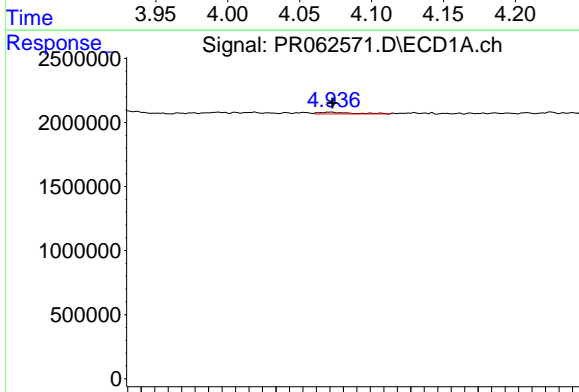
R.T.: 4.913 min
 Delta R.T.: 0.000 min
 Response: 243087
 Conc: 3.62 ng/ml

Instrument :
 ECD_R
 ClientSampleId :



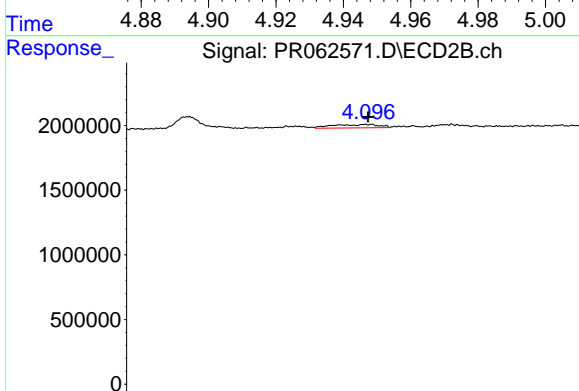
#3 AR-1016-1

R.T.: 4.100 min
 Delta R.T.: 0.021 min
 Response: 603729
 Conc: 5.57 ng/ml



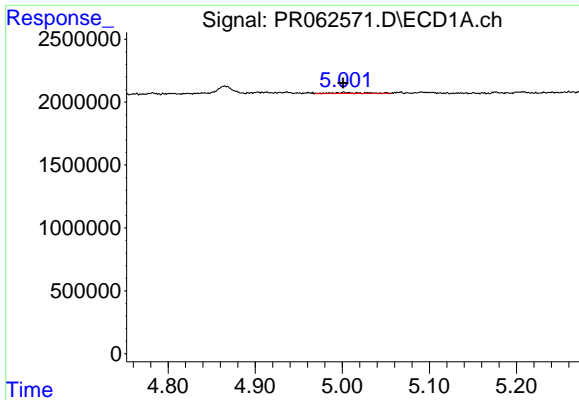
#4 AR-1016-2

R.T.: 4.936 min
 Delta R.T.: 0.000 min
 Response: 97298
 Conc: 1.01 ng/ml



#4 AR-1016-2

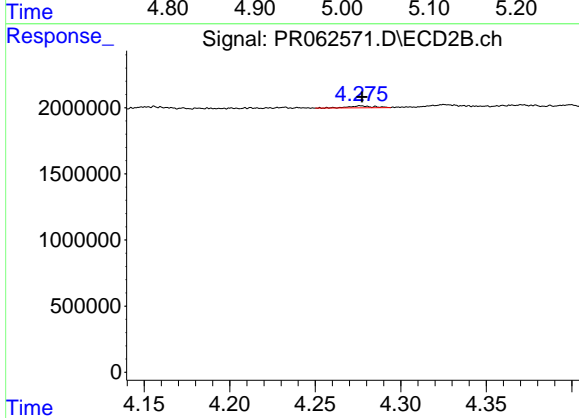
R.T.: 4.100 min
 Delta R.T.: 0.002 min
 Response: 603729
 Conc: 3.95 ng/ml



#5 AR-1016-3

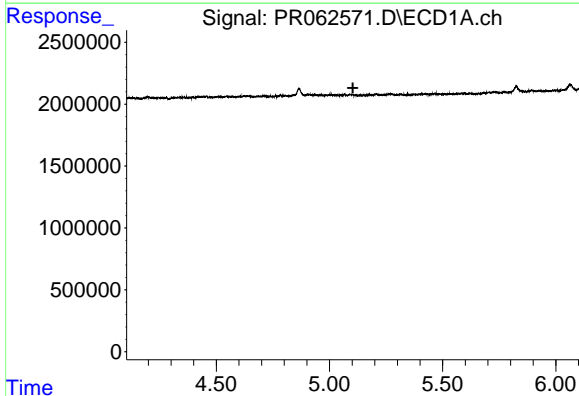
R.T.: 5.002 min
 Delta R.T.: 0.000 min
 Response: 171935
 Conc: 2.79 ng/ml

Instrument :
 ECD_R
 ClientSampleId :



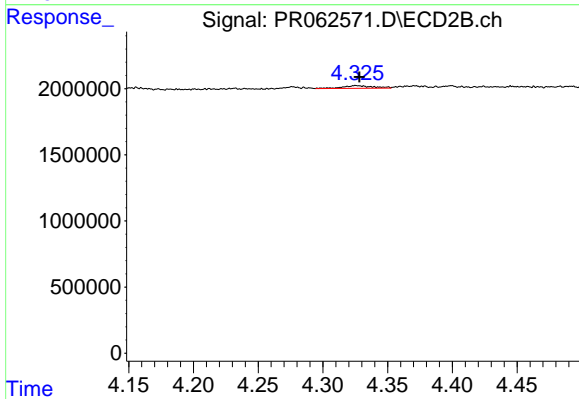
#5 AR-1016-3

R.T.: 4.277 min
 Delta R.T.: 0.000 min
 Response: 146588
 Conc: 1.75 ng/ml



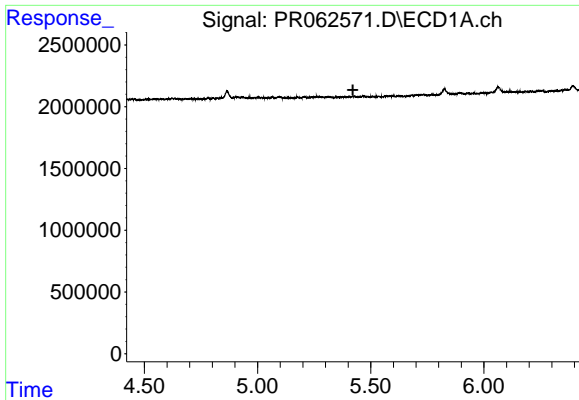
#6 AR-1016-4

R.T.: 0.000 min
 Exp R.T. : 5.104 min
 Response: 0
 Conc: N.D.



#6 AR-1016-4

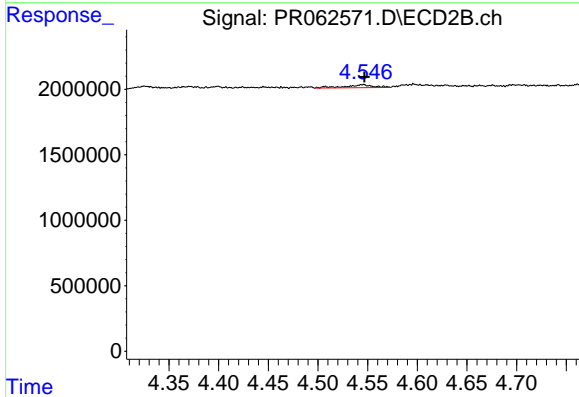
R.T.: 4.325 min
 Delta R.T.: -0.003 min
 Response: 339467
 Conc: 5.00 ng/ml



#7 AR-1016-5

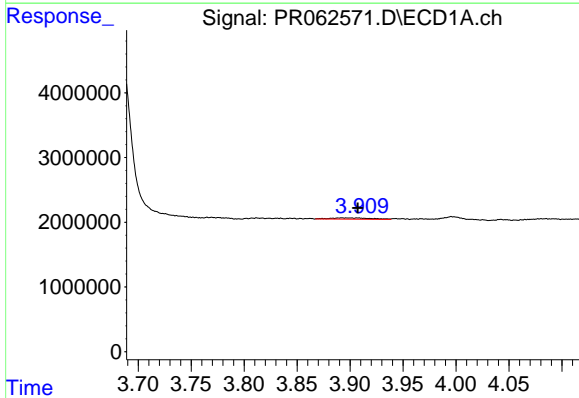
R.T.: 0.000 min
 Exp R.T.: 5.421 min
 Response: 0
 Conc: N.D.

Instrument :
 ECD_R
 ClientSampleId :



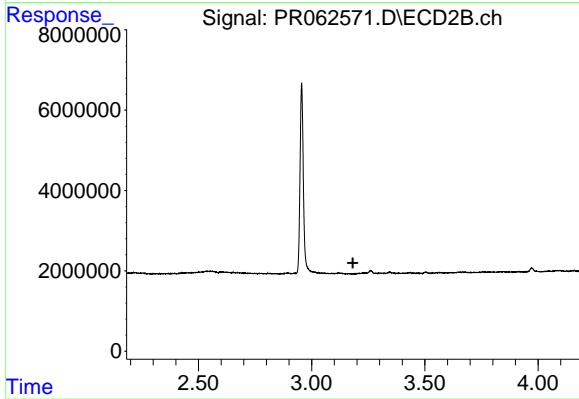
#7 AR-1016-5

R.T.: 4.546 min
 Delta R.T.: -0.001 min
 Response: 447521
 Conc: 4.92 ng/ml



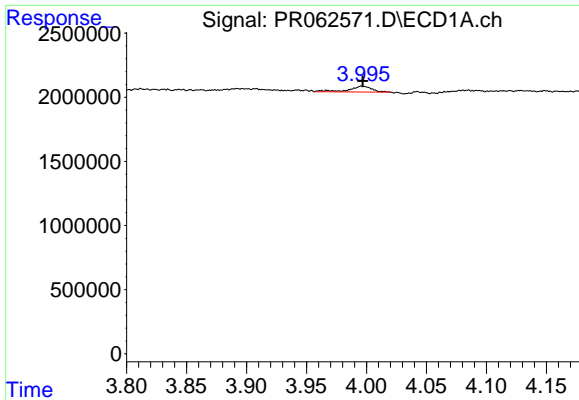
#8 AR-1221-1

R.T.: 3.892 min
 Delta R.T.: -0.015 min
 Response: 499274
 Conc: 20.41 ng/ml



#8 AR-1221-1

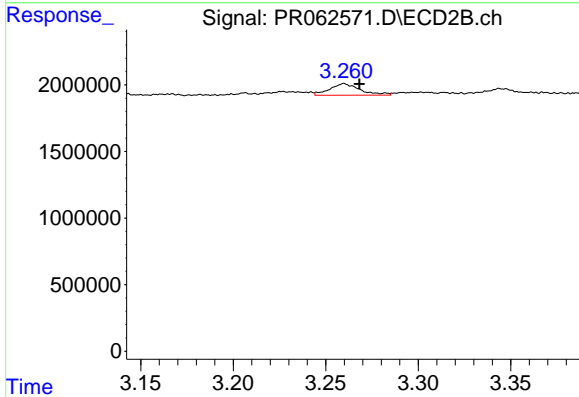
R.T.: 0.000 min
 Exp R.T.: 3.182 min
 Response: 0
 Conc: N.D.



#9 AR-1221-2

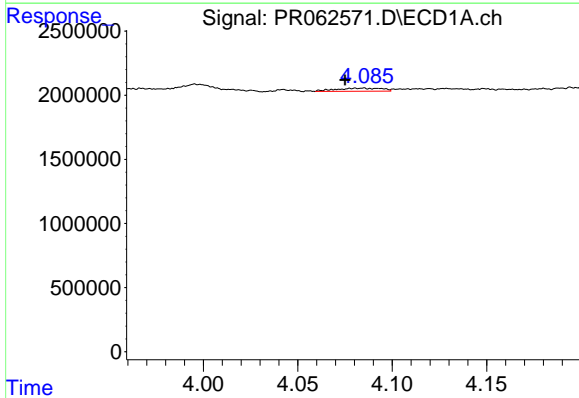
R.T.: 3.996 min
 Delta R.T.: 0.000 min
 Response: 610473
 Conc: 39.40 ng/ml

Instrument :
 ECD_R
 ClientSampleId :



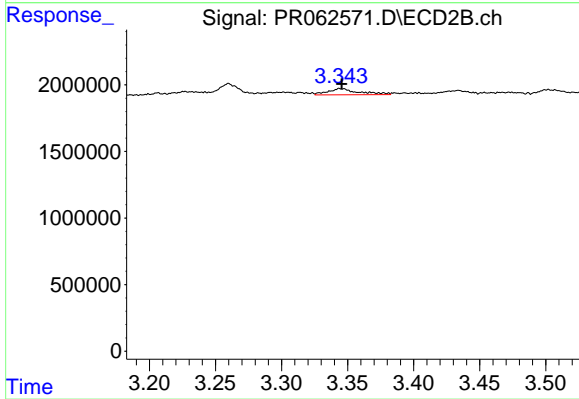
#9 AR-1221-2

R.T.: 3.260 min
 Delta R.T.: -0.008 min
 Response: 983099
 Conc: 27.23 ng/ml



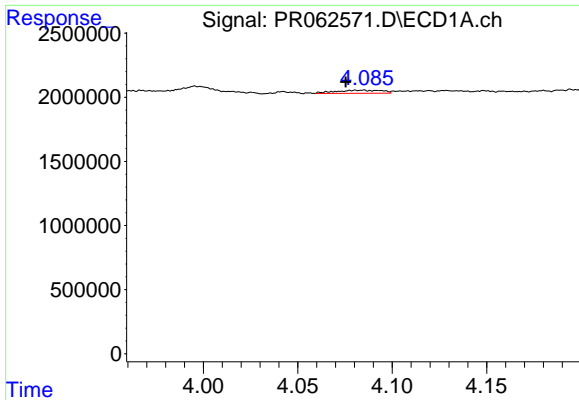
#10 AR-1221-3

R.T.: 4.085 min
 Delta R.T.: 0.010 min
 Response: 408179
 Conc: 6.80 ng/ml



#10 AR-1221-3

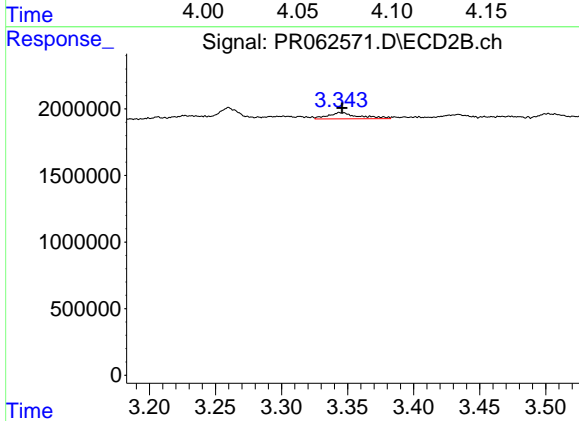
R.T.: 3.345 min
 Delta R.T.: 0.000 min
 Response: 747524
 Conc: 8.31 ng/ml



#11 AR-1232-1

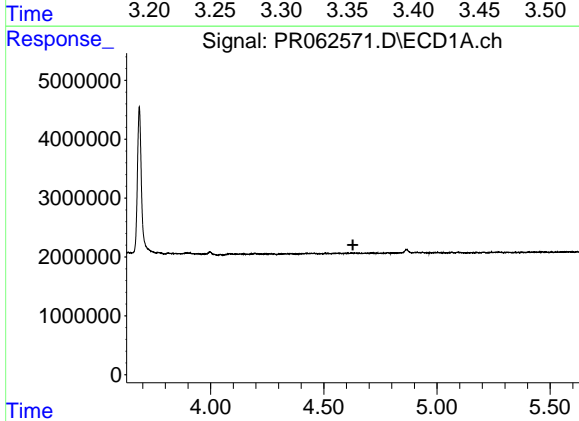
R.T.: 4.085 min
 Delta R.T.: 0.009 min
 Response: 408179
 Conc: 8.22 ng/ml

Instrument :
 ECD_R
 ClientSampleId :



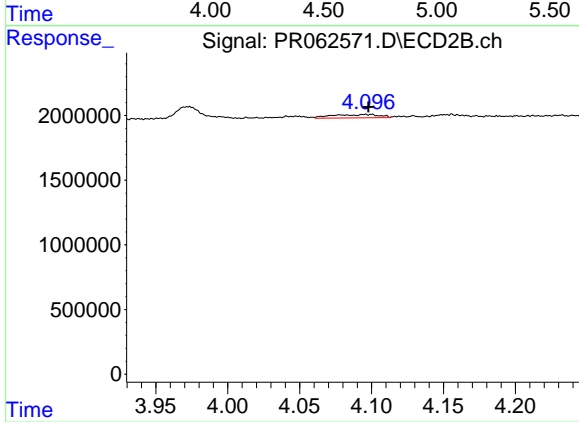
#11 AR-1232-1

R.T.: 3.345 min
 Delta R.T.: -0.001 min
 Response: 747524
 Conc: 9.98 ng/ml



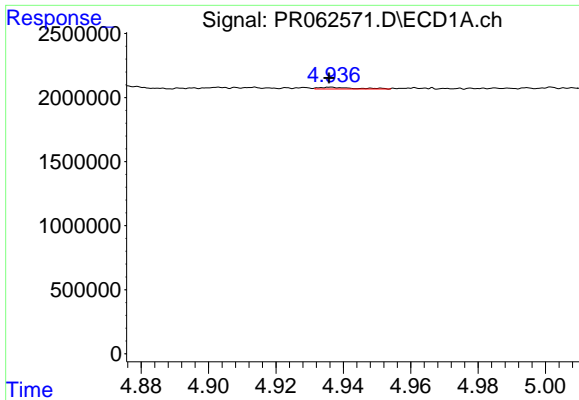
#12 AR-1232-2

R.T.: 0.000 min
 Exp R.T. : 4.628 min
 Response: 0
 Conc: N.D.



#12 AR-1232-2

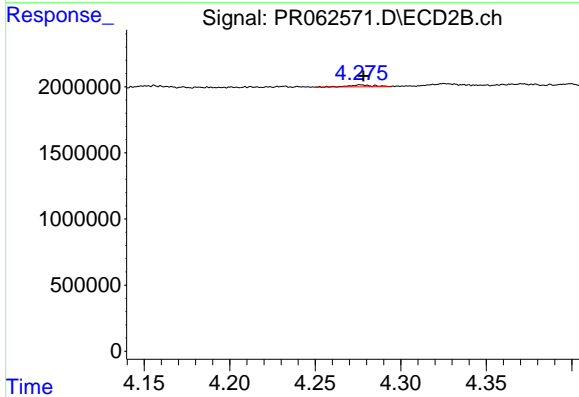
R.T.: 4.100 min
 Delta R.T.: 0.002 min
 Response: 603729
 Conc: 8.75 ng/ml



#13 AR-1232-3

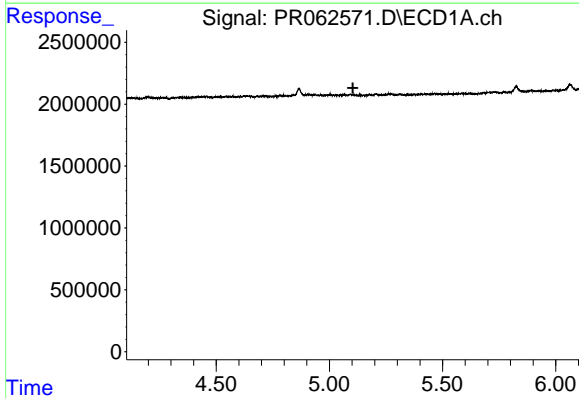
R.T.: 4.936 min
 Delta R.T.: 0.000 min
 Response: 97298
 Conc: 2.28 ng/ml

Instrument :
 ECD_R
 ClientSampleId :



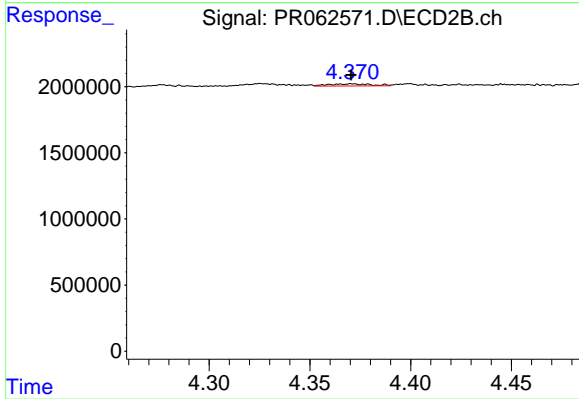
#13 AR-1232-3

R.T.: 4.277 min
 Delta R.T.: -0.002 min
 Response: 146588
 Conc: 3.95 ng/ml



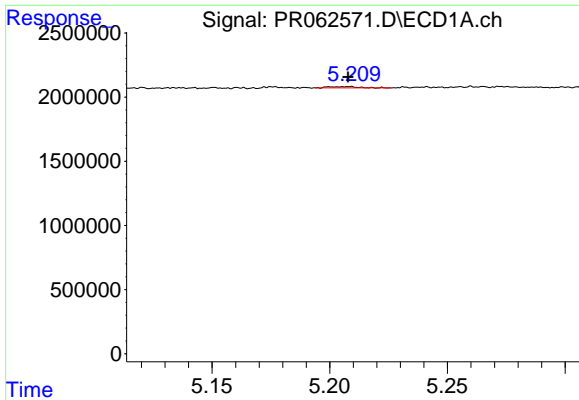
#14 AR-1232-4

R.T.: 0.000 min
 Exp R.T. : 5.104 min
 Response: 0
 Conc: N.D.



#14 AR-1232-4

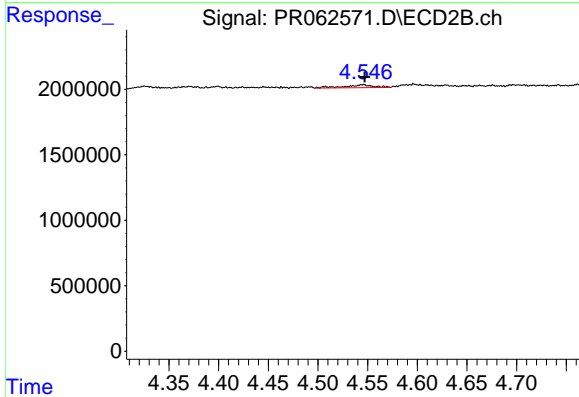
R.T.: 4.371 min
 Delta R.T.: 0.000 min
 Response: 233444
 Conc: 6.89 ng/ml



#15 AR-1232-5

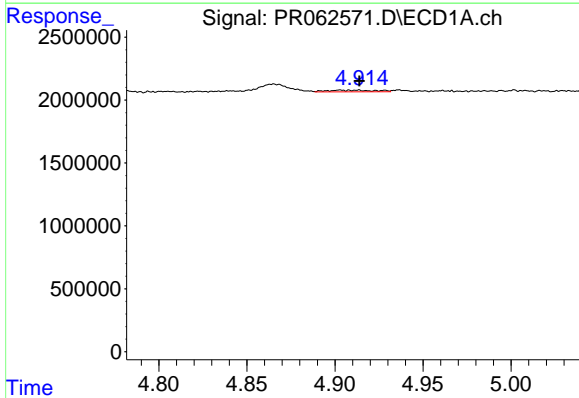
R.T.: 5.208 min
 Delta R.T.: 0.000 min
 Response: 90303
 Conc: 5.19 ng/ml

Instrument :
 ECD_R
 ClientSampleId :



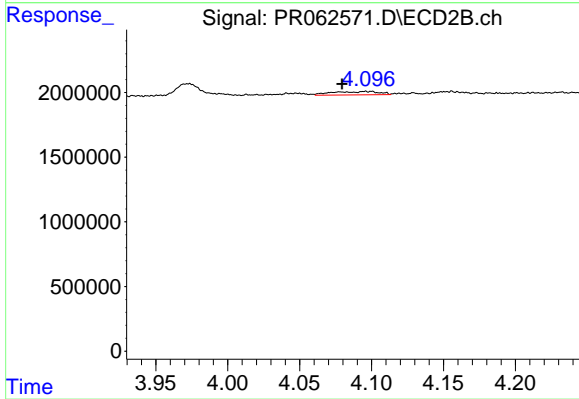
#15 AR-1232-5

R.T.: 4.546 min
 Delta R.T.: -0.002 min
 Response: 447521
 Conc: 11.39 ng/ml



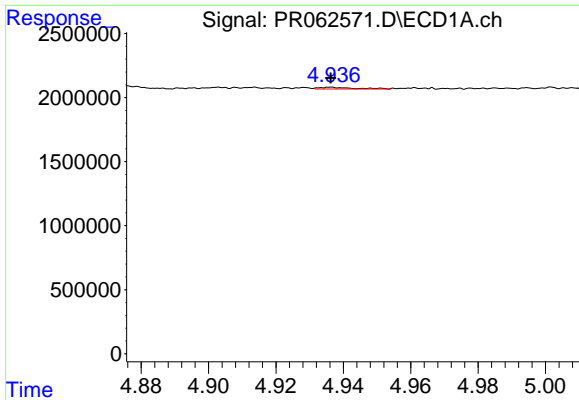
#16 AR-1242-1

R.T.: 4.913 min
 Delta R.T.: 0.000 min
 Response: 243087
 Conc: 4.36 ng/ml



#16 AR-1242-1

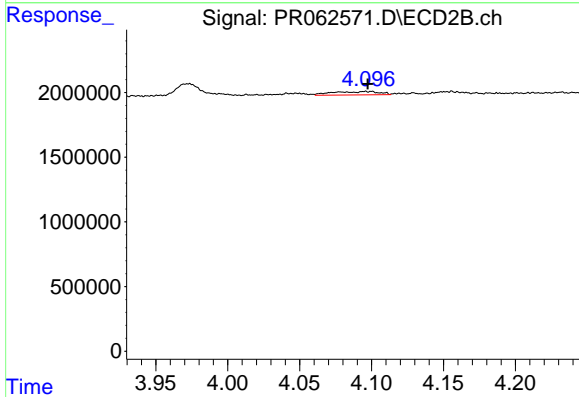
R.T.: 4.100 min
 Delta R.T.: 0.020 min
 Response: 603729
 Conc: 6.71 ng/ml



#17 AR-1242-2

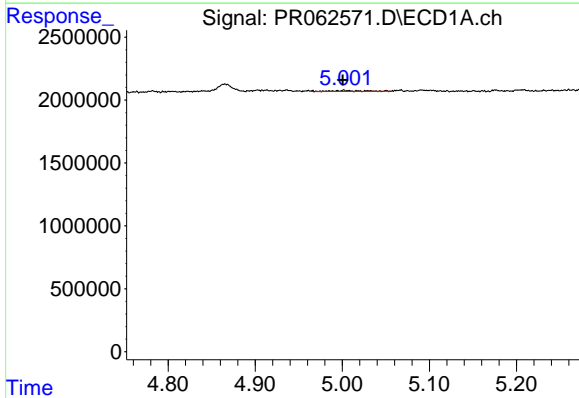
R.T.: 4.936 min
 Delta R.T.: 0.000 min
 Response: 97298
 Conc: 1.21 ng/ml

Instrument :
 ECD_R
 ClientSampleId :



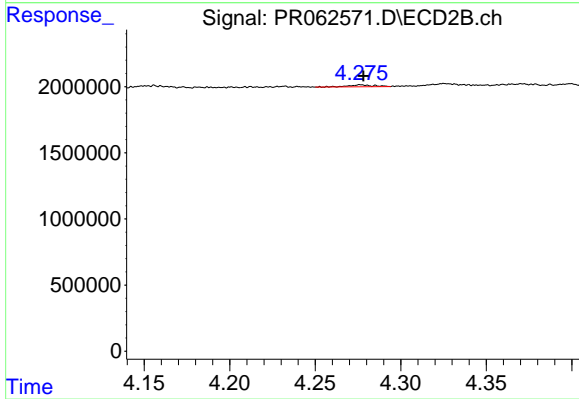
#17 AR-1242-2

R.T.: 4.100 min
 Delta R.T.: 0.002 min
 Response: 603729
 Conc: 4.82 ng/ml



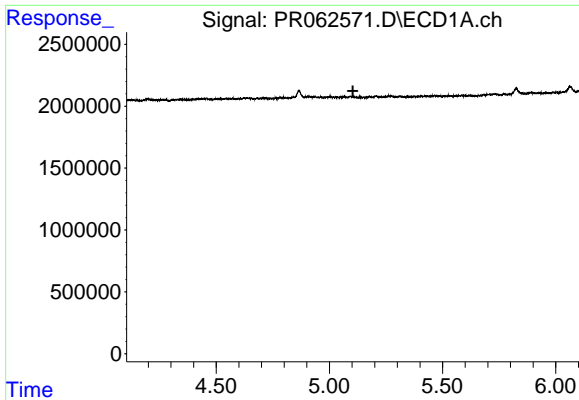
#18 AR-1242-3

R.T.: 5.002 min
 Delta R.T.: 0.001 min
 Response: 171935
 Conc: 3.34 ng/ml



#18 AR-1242-3

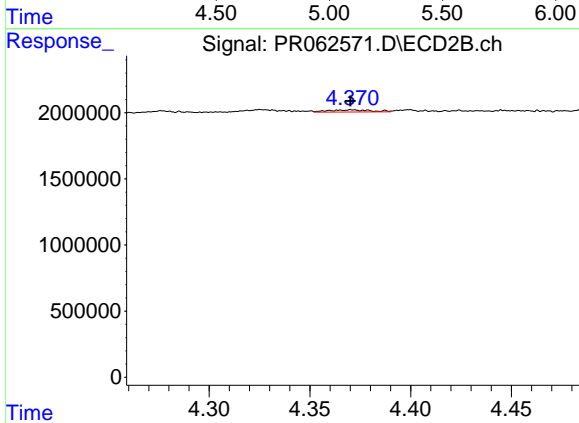
R.T.: 4.277 min
 Delta R.T.: -0.002 min
 Response: 146588
 Conc: 2.12 ng/ml



#19 AR-1242-4

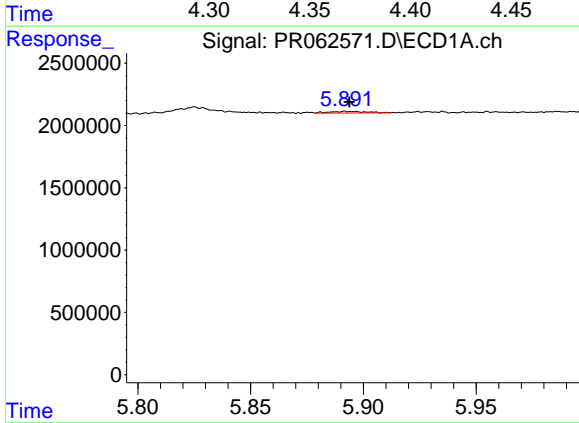
R.T.: 0.000 min
 Exp R.T.: 5.104 min
 Response: 0
 Conc: N.D.

Instrument :
 ECD_R
 ClientSampleId :



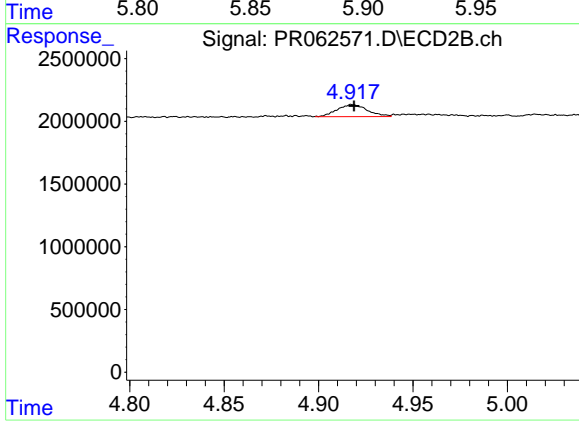
#19 AR-1242-4

R.T.: 4.371 min
 Delta R.T.: 0.000 min
 Response: 233444
 Conc: 3.40 ng/ml



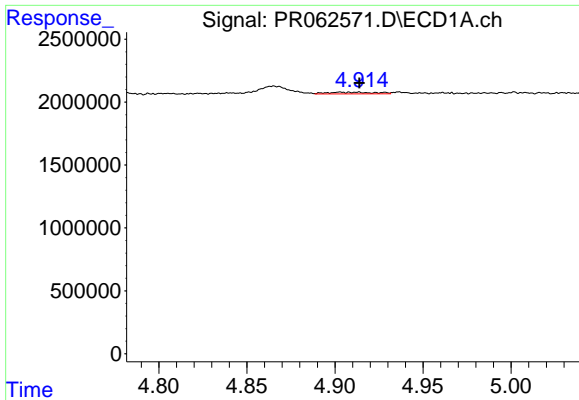
#20 AR-1242-5

R.T.: 5.892 min
 Delta R.T.: -0.001 min
 Response: 153820
 Conc: 3.59 ng/ml



#20 AR-1242-5

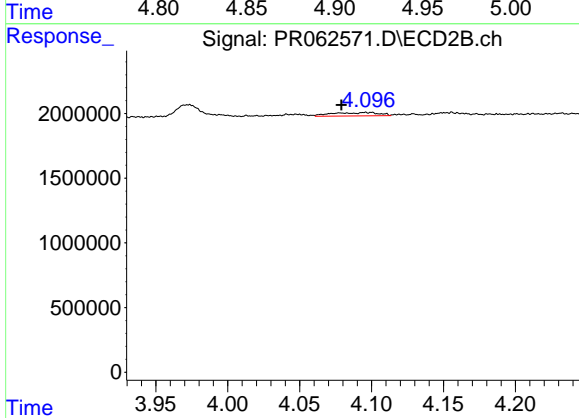
R.T.: 4.918 min
 Delta R.T.: 0.000 min
 Response: 1080179
 Conc: 12.07 ng/ml



#21 AR-1248-1

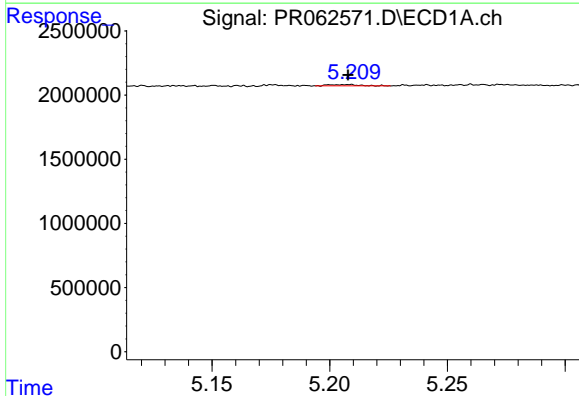
R.T.: 4.913 min
 Delta R.T.: 0.000 min
 Response: 243087
 Conc: 5.92 ng/ml

Instrument :
 ECD_R
 ClientSampleId :



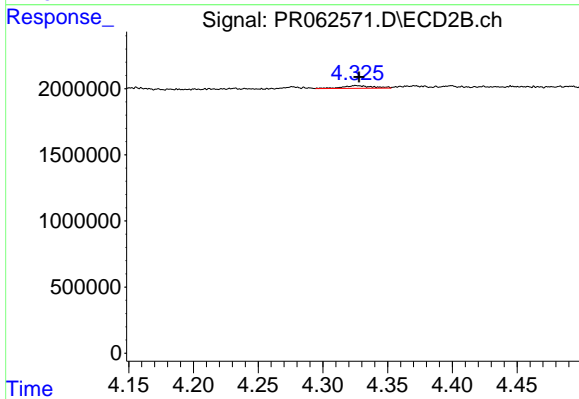
#21 AR-1248-1

R.T.: 4.100 min
 Delta R.T.: 0.021 min
 Response: 603729
 Conc: 9.02 ng/ml



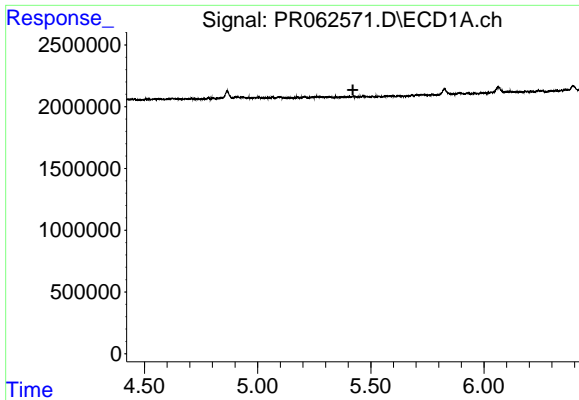
#22 AR-1248-2

R.T.: 5.208 min
 Delta R.T.: 0.000 min
 Response: 90303
 Conc: 1.49 ng/ml



#22 AR-1248-2

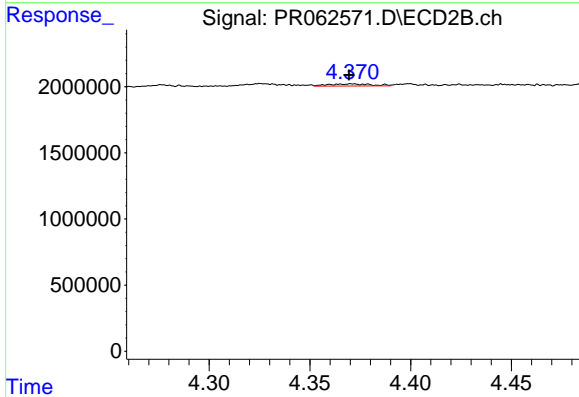
R.T.: 4.325 min
 Delta R.T.: -0.002 min
 Response: 339467
 Conc: 3.54 ng/ml



#23 AR-1248-3

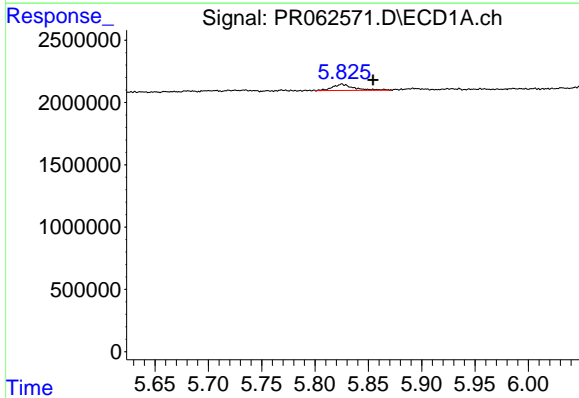
R.T.: 0.000 min
 Exp R.T.: 5.421 min
 Response: 0
 Conc: N.D.

Instrument :
 ECD_R
 ClientSampleId :



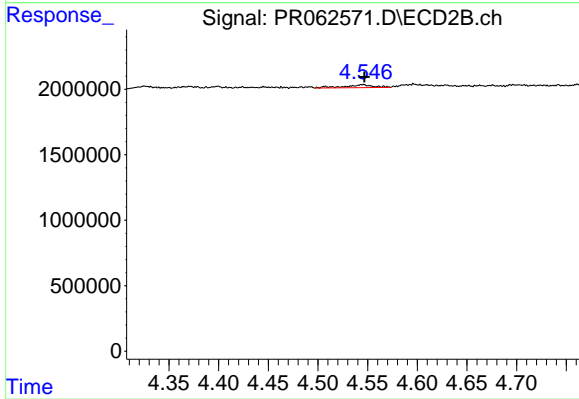
#23 AR-1248-3

R.T.: 4.371 min
 Delta R.T.: 0.002 min
 Response: 233444
 Conc: 2.36 ng/ml



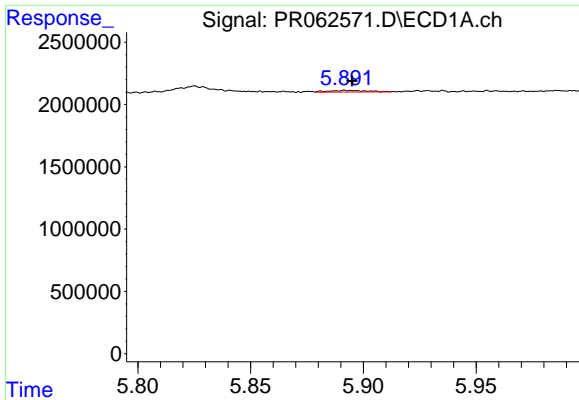
#24 AR-1248-4

R.T.: 5.825 min
 Delta R.T.: -0.029 min
 Response: 688966
 Conc: 9.53 ng/ml



#24 AR-1248-4

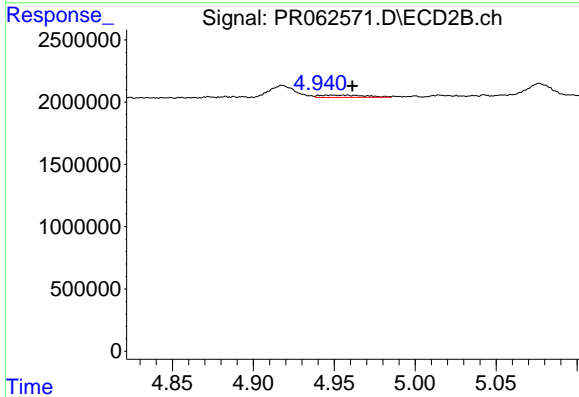
R.T.: 4.546 min
 Delta R.T.: -0.001 min
 Response: 447521
 Conc: 3.77 ng/ml



#25 AR-1248-5

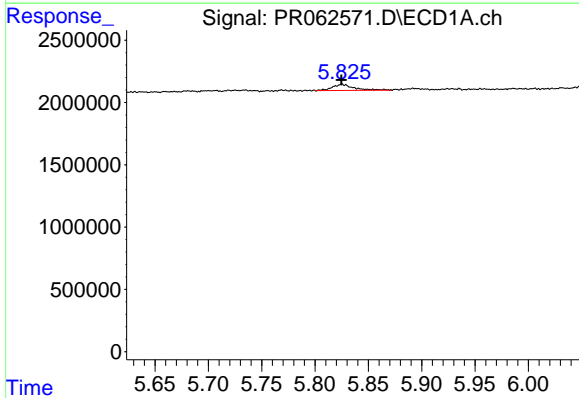
R.T.: 5.892 min
 Delta R.T.: -0.002 min
 Response: 153820
 Conc: 2.17 ng/ml

Instrument :
 ECD_R
 ClientSampleId :



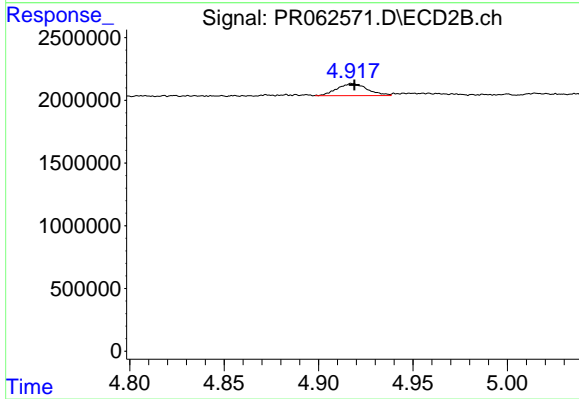
#25 AR-1248-5

R.T.: 4.949 min
 Delta R.T.: -0.012 min
 Response: 350726
 Conc: 2.93 ng/ml



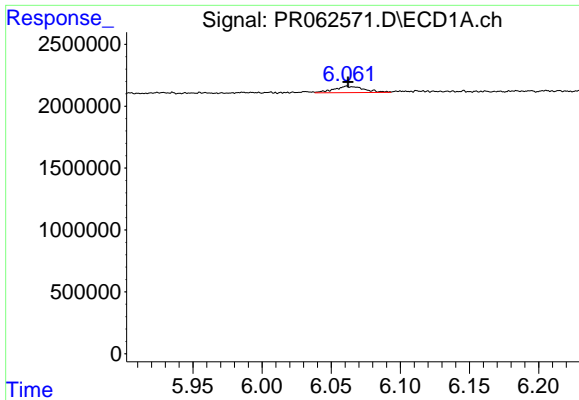
#26 AR-1254-1

R.T.: 5.825 min
 Delta R.T.: 0.000 min
 Response: 688966
 Conc: 8.62 ng/ml



#26 AR-1254-1

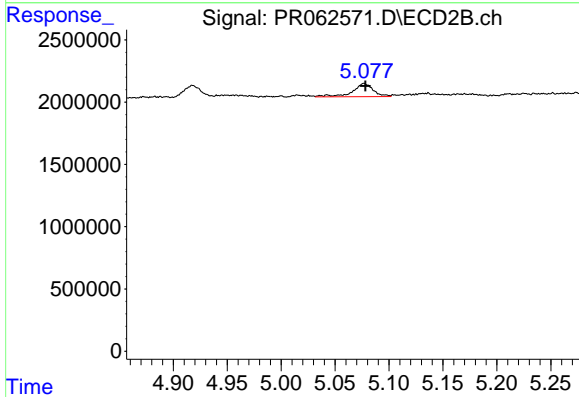
R.T.: 4.918 min
 Delta R.T.: -0.001 min
 Response: 1080179
 Conc: 6.03 ng/ml



#27 AR-1254-2

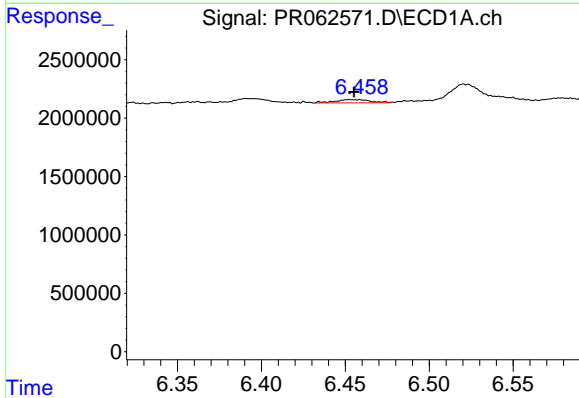
R.T.: 6.061 min
 Delta R.T.: -0.001 min
 Response: 791359
 Conc: 6.63 ng/ml

Instrument :
 ECD_R
 ClientSampleId :



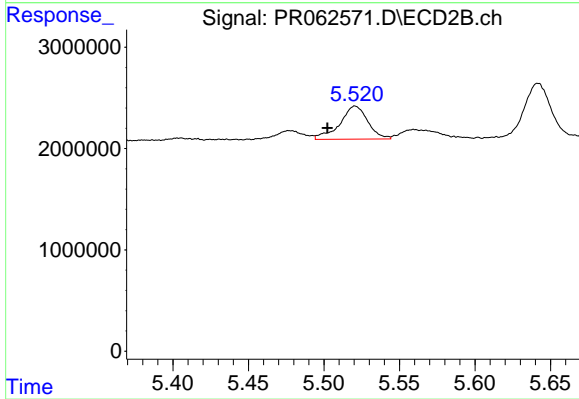
#27 AR-1254-2

R.T.: 5.077 min
 Delta R.T.: -0.001 min
 Response: 1414404
 Conc: 9.04 ng/ml



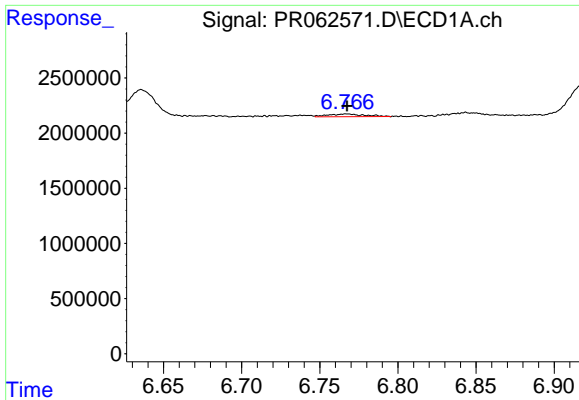
#28 AR-1254-3

R.T.: 6.458 min
 Delta R.T.: 0.003 min
 Response: 409685
 Conc: 3.46 ng/ml



#28 AR-1254-3

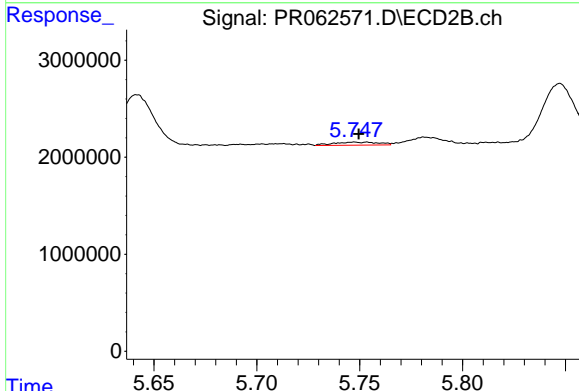
R.T.: 5.521 min
 Delta R.T.: 0.018 min
 Response: 4216582
 Conc: 16.24 ng/ml



#29 AR-1254-4

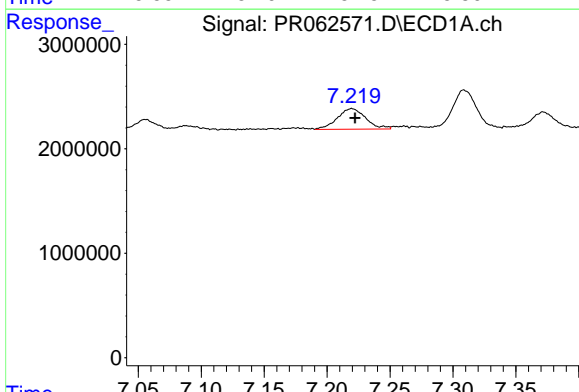
R.T.: 6.767 min
 Delta R.T.: 0.000 min
 Response: 407696
 Conc: 4.90 ng/ml

Instrument :
 ECD_R
 ClientSampleId :



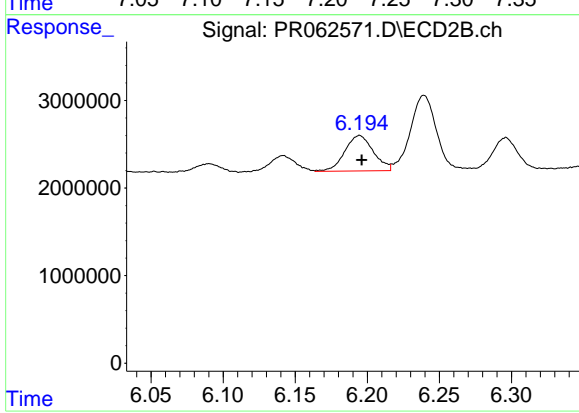
#29 AR-1254-4

R.T.: 5.747 min
 Delta R.T.: -0.002 min
 Response: 480513
 Conc: 2.87 ng/ml



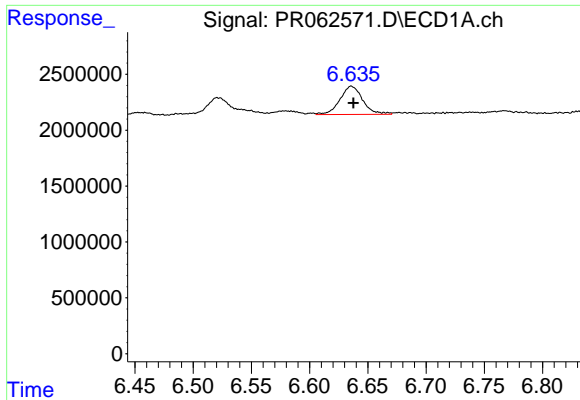
#30 AR-1254-5

R.T.: 7.220 min
 Delta R.T.: -0.003 min
 Response: 3094609
 Conc: 34.43 ng/ml



#30 AR-1254-5

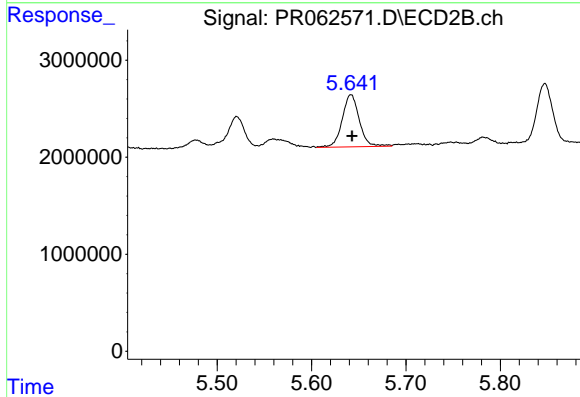
R.T.: 6.195 min
 Delta R.T.: -0.002 min
 Response: 5583219
 Conc: 22.45 ng/ml



#31 AR-1260-1

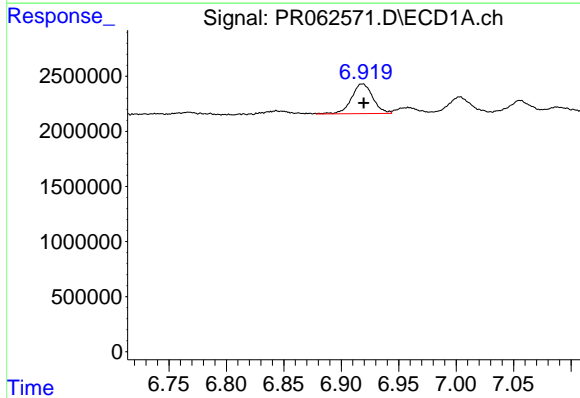
R.T.: 6.636 min
 Delta R.T.: -0.002 min
 Response: 3443949
 Conc: 33.36 ng/ml

Instrument :
 ECD_R
 ClientSampleId :



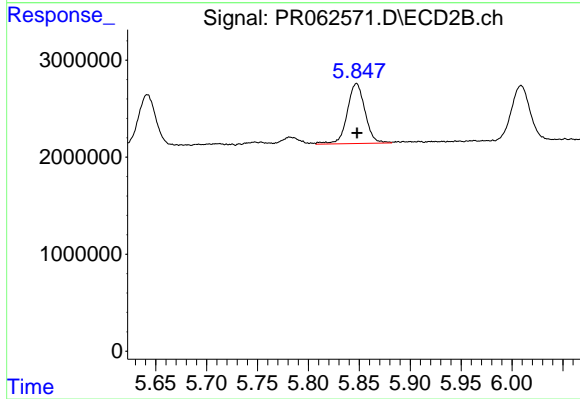
#31 AR-1260-1

R.T.: 5.642 min
 Delta R.T.: -0.001 min
 Response: 6802061
 Conc: 34.96 ng/ml



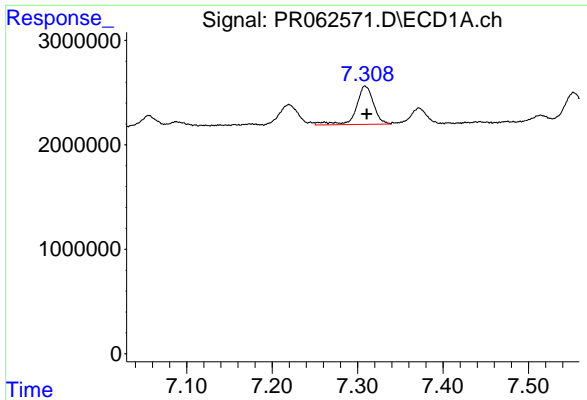
#32 AR-1260-2

R.T.: 6.919 min
 Delta R.T.: 0.000 min
 Response: 3508431
 Conc: 31.98 ng/ml



#32 AR-1260-2

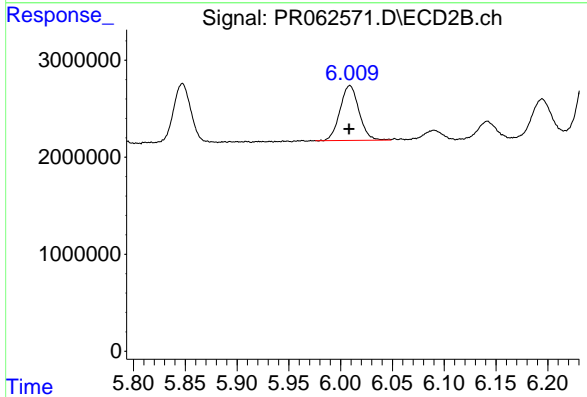
R.T.: 5.847 min
 Delta R.T.: 0.000 min
 Response: 7511737
 Conc: 31.60 ng/ml



#33 AR-1260-3

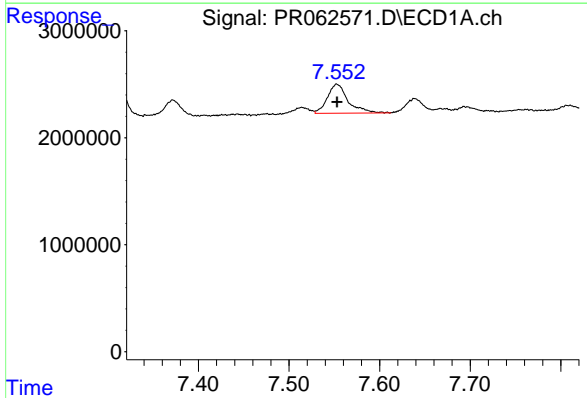
R.T.: 7.309 min
 Delta R.T.: -0.002 min
 Response: 5188059
 Conc: 63.64 ng/ml

Instrument :
 ECD_R
 ClientSampleId :



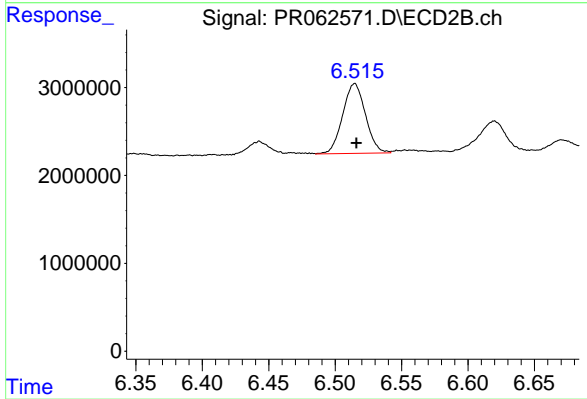
#33 AR-1260-3

R.T.: 6.009 min
 Delta R.T.: 0.000 min
 Response: 7193175
 Conc: 31.89 ng/ml



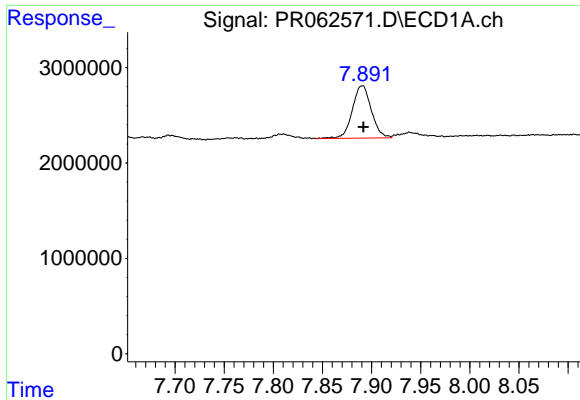
#34 AR-1260-4

R.T.: 7.553 min
 Delta R.T.: 0.000 min
 Response: 4313876
 Conc: 47.97 ng/ml



#34 AR-1260-4

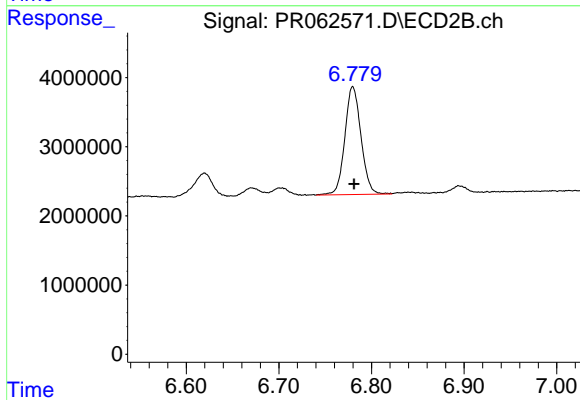
R.T.: 6.515 min
 Delta R.T.: -0.001 min
 Response: 9474175
 Conc: 47.83 ng/ml



#35 AR-1260-5

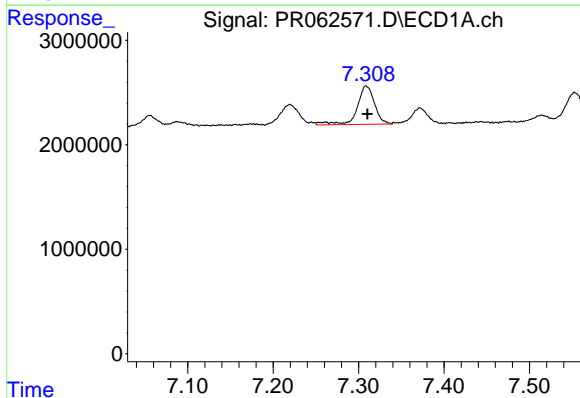
R.T.: 7.890 min
 Delta R.T.: -0.001 min
 Response: 7397197
 Conc: 45.65 ng/ml

Instrument :
 ECD_R
 ClientSampleId :



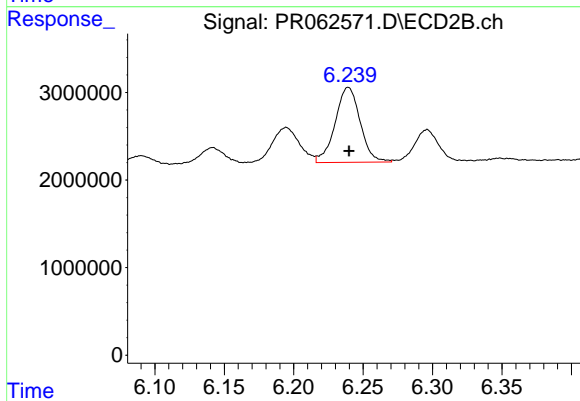
#35 AR-1260-5

R.T.: 6.780 min
 Delta R.T.: -0.001 min
 Response: 18889139
 Conc: 40.76 ng/ml



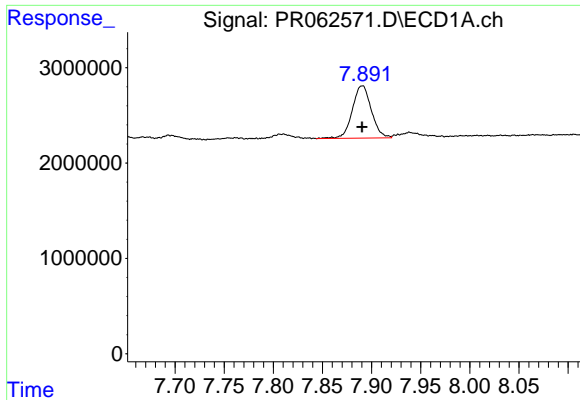
#36 AR-1262-1

R.T.: 7.309 min
 Delta R.T.: 0.000 min
 Response: 5188059
 Conc: 45.19 ng/ml



#36 AR-1262-1

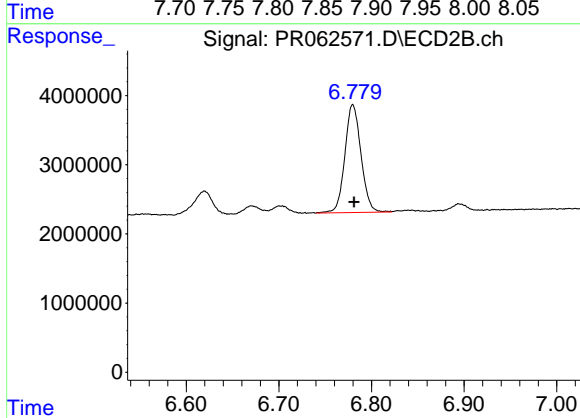
R.T.: 6.239 min
 Delta R.T.: 0.000 min
 Response: 10752424
 Conc: 41.30 ng/ml



#37 AR-1262-2

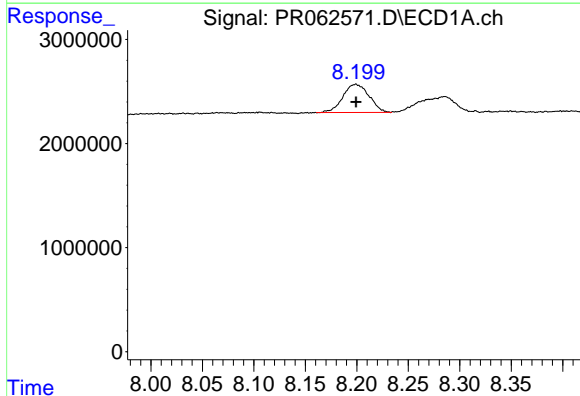
R.T.: 7.890 min
 Delta R.T.: 0.000 min
 Response: 7397197
 Conc: 40.93 ng/ml

Instrument :
 ECD_R
 ClientSampleId :



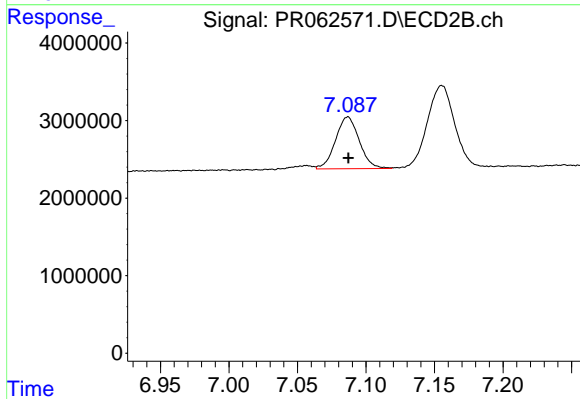
#37 AR-1262-2

R.T.: 6.780 min
 Delta R.T.: -0.001 min
 Response: 18889139
 Conc: 38.86 ng/ml



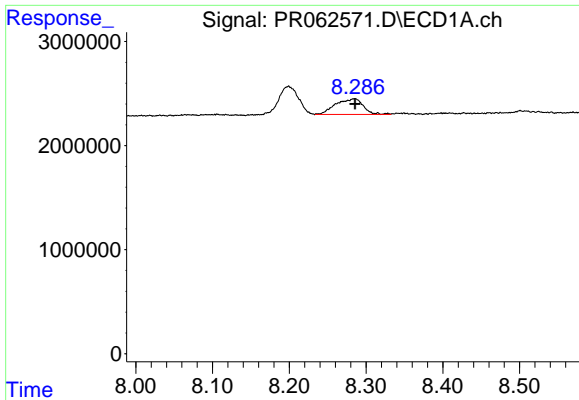
#38 AR-1262-3

R.T.: 8.199 min
 Delta R.T.: 0.000 min
 Response: 4794912
 Conc: 37.80 ng/ml



#38 AR-1262-3

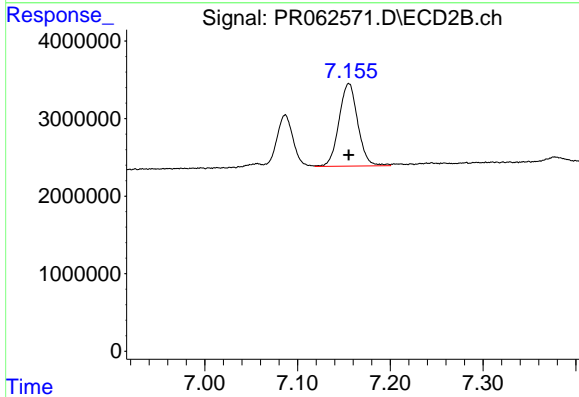
R.T.: 7.087 min
 Delta R.T.: 0.000 min
 Response: 8083102
 Conc: 40.68 ng/ml



#39 AR-1262-4

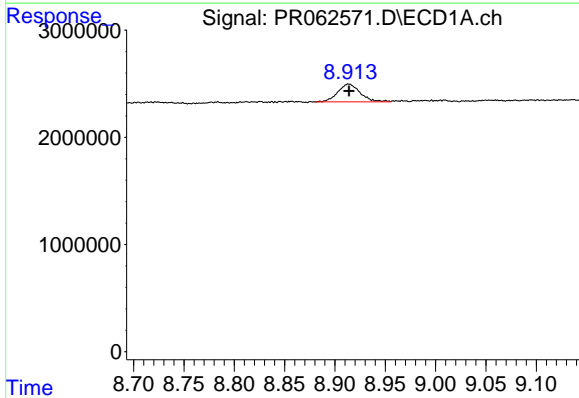
R.T.: 8.285 min
 Delta R.T.: 0.000 min
 Response: 3796042
 Conc: 37.62 ng/ml

Instrument :
 ECD_R
 ClientSampleId :



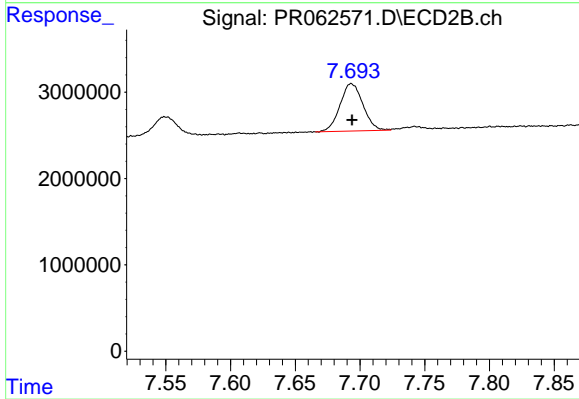
#39 AR-1262-4

R.T.: 7.155 min
 Delta R.T.: 0.000 min
 Response: 14999654
 Conc: 40.29 ng/ml



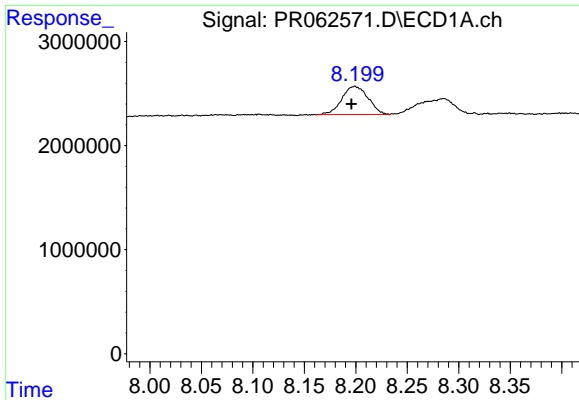
#40 AR-1262-5

R.T.: 8.914 min
 Delta R.T.: 0.000 min
 Response: 2588631
 Conc: 40.18 ng/ml



#40 AR-1262-5

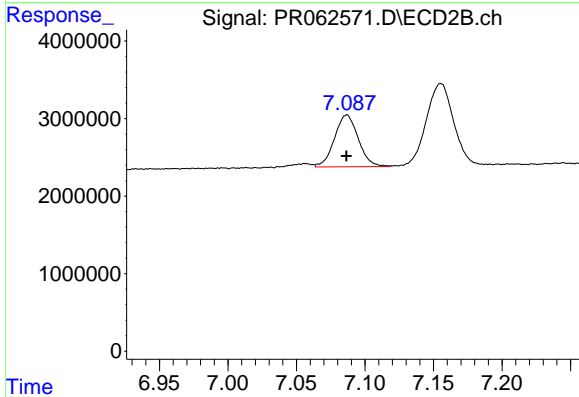
R.T.: 7.693 min
 Delta R.T.: 0.000 min
 Response: 6741393
 Conc: 38.02 ng/ml



#41 AR-1268-1

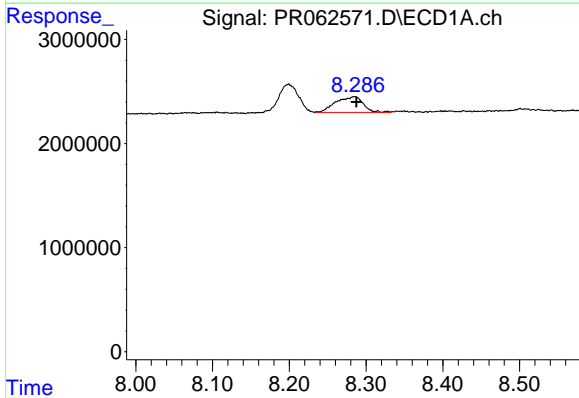
R.T.: 8.199 min
 Delta R.T.: 0.003 min
 Response: 4794912
 Conc: 22.11 ng/ml

Instrument :
 ECD_R
 ClientSampleId :



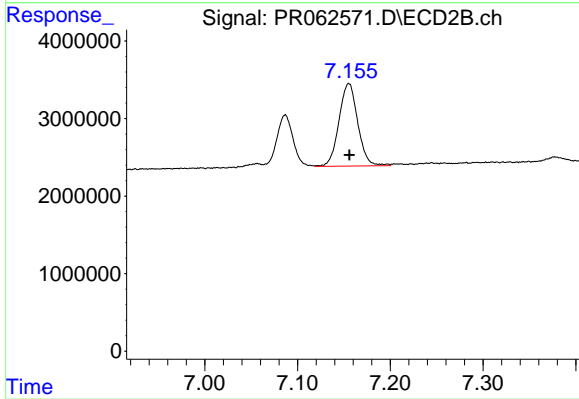
#41 AR-1268-1

R.T.: 7.087 min
 Delta R.T.: 0.000 min
 Response: 8083102
 Conc: 13.88 ng/ml



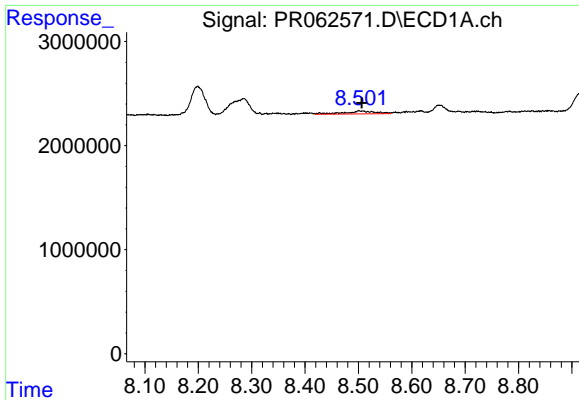
#42 AR-1268-2

R.T.: 8.285 min
 Delta R.T.: -0.002 min
 Response: 3796042
 Conc: 18.75 ng/ml



#42 AR-1268-2

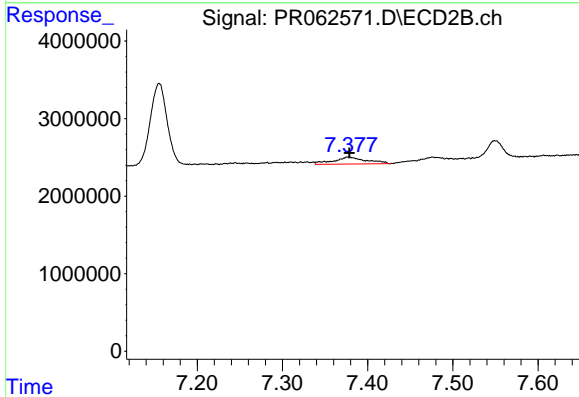
R.T.: 7.155 min
 Delta R.T.: 0.000 min
 Response: 14999654
 Conc: 27.84 ng/ml



#43 AR-1268-3

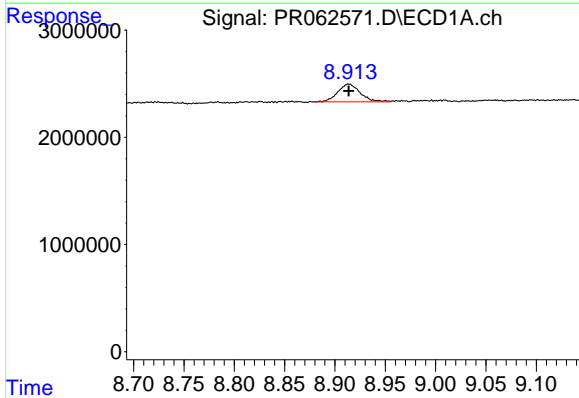
R.T.: 8.502 min
 Delta R.T.: -0.004 min
 Response: 1129377
 Conc: 6.37 ng/ml

Instrument :
 ECD_R
 ClientSampleId :



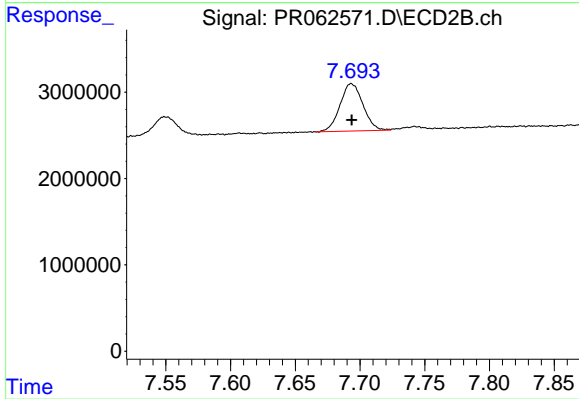
#43 AR-1268-3

R.T.: 7.377 min
 Delta R.T.: -0.001 min
 Response: 2378196
 Conc: 5.04 ng/ml



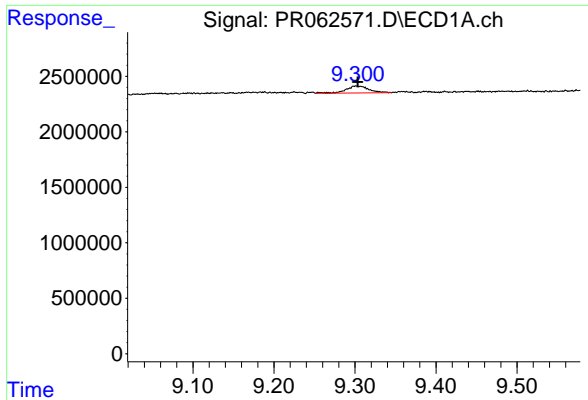
#44 AR-1268-4

R.T.: 8.914 min
 Delta R.T.: 0.000 min
 Response: 2588631
 Conc: 37.39 ng/ml



#44 AR-1268-4

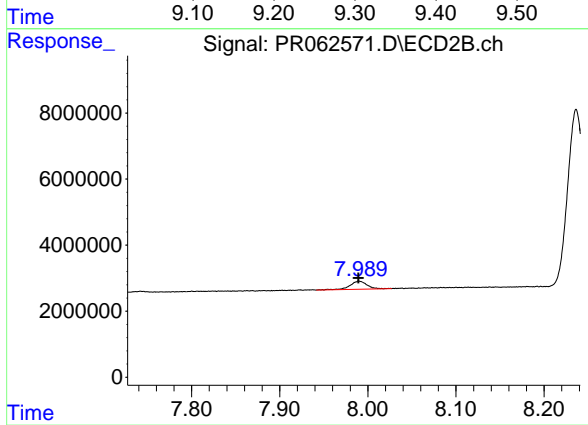
R.T.: 7.693 min
 Delta R.T.: 0.000 min
 Response: 6741393
 Conc: 34.11 ng/ml



#45 AR-1268-5

R.T.: 9.302 min
 Delta R.T.: -0.001 min
 Response: 1260411
 Conc: 2.48 ng/ml

Instrument :
 ECD_R
 ClientSampleId :



#45 AR-1268-5

R.T.: 7.990 min
 Delta R.T.: 0.000 min
 Response: 3284491
 Conc: 2.19 ng/ml