

Data Path : Z:\pestpcbsrv\HPCHEM1\ECD_R\Data\PR081023\
 Data File : PR062577.D
 Signal(s) : Signal #1: ECD1A.ch Signal #2: ECD2B.ch
 Acq On : 09 Aug 2023 15:56
 Operator : YP\AJ
 Sample : 03572-09
 Misc : AR1232 MDL 25 PPB
 ALS Vial : 24 Sample Multiplier: 1

Instrument :
 ECD_R
 ClientSampleId :

Integration File signal 1: autoint1.e
 Integration File signal 2: autoint2.e
 Quant Time: Aug 09 22:10:37 2023
 Quant Method : Z:\pestpcbsrv\HPCHEM1\ECD_R\Method\PR080923.M
 Quant Title : GC EXTRACTABLES
 QLast Update : Wed Aug 09 01:27:38 2023
 Response via : Initial Calibration
 Integrator: ChemStation

Volume Inj. : 2 µl
 Signal #1 Phase : ZB-MR1 Signal #2 Phase: ZB-MR2
 Signal #1 Info : 30Mx0.32mmx 0.50µ Signal #2 Info : 30M x 0.32mm x 0.25µm

Compound	RT#1	RT#2	Resp#1	Resp#2	ng/ml	ng/ml

System Monitoring Compounds						
1) SA Tetrachlo...	3.685	2.956	34806369	54996773	17.240	18.944
2) SA Decachlor...	9.618	8.236	31298162	82272317	21.013	19.827
Target Compounds						
3) L1 AR-1016-1	4.914	4.079	776075	1476775	11.557	13.614
4) L1 AR-1016-2	4.936	4.097	1075747	1570744	11.140	10.288
5) L1 AR-1016-3	5.002	4.278	881690	886849	14.311	10.584 #
6) L1 AR-1016-4	5.104	4.328	689065	966825	14.138	14.249
7) L1 AR-1016-5	5.419	4.546	840327	1030219	16.106	11.323 #
8) L2 AR-1221-1	3.912	3.182	617683	592730	25.252	15.667 #
9) L2 AR-1221-2	3.998	3.262	815374	1645424	52.630	45.570
10) L2 AR-1221-3	4.075	3.345	1464849	2396970	24.403	26.648
11) L3 AR-1232-1	4.075	3.345	1464849	2396970	29.494	32.005
12) L3 AR-1232-2	4.629	4.097	699568	1570744	28.329	22.774
13) L3 AR-1232-3	4.936	4.278	1075747	886849	25.185	23.899
14) L3 AR-1232-4	5.104	4.370	689065	893880	32.597	26.398
15) L3 AR-1232-5	5.208	4.546	721862	1030219	41.508	26.219 #
16) L4 AR-1242-1	4.914	4.079	776075	1476775	13.924	16.415
17) L4 AR-1242-2	4.936	4.097	1075747	1570744	13.400	12.529
18) L4 AR-1242-3	5.002	4.278	881690	886849	17.120	12.817 #
19) L4 AR-1242-4	5.104	4.370	689065	893880	17.050	13.035
20) L4 AR-1242-5	5.894	4.919	947698	1573160	22.121	17.571
21) L5 AR-1248-1	4.914	4.079	776075	1476775	18.894	22.070
22) L5 AR-1248-2	5.208	4.328	721862	966825	11.918	10.089
23) L5 AR-1248-3	5.419	4.370	840327	893880	11.983	9.054
24) L5 AR-1248-4	5.856	4.546	738451	1030219	10.210	8.683
25) L5 AR-1248-5	5.894	4.960	947698	2000751	13.380	16.742 #
26) L6 AR-1254-1	5.825	4.919	765722	1573160	9.581	8.783
27) L6 AR-1254-2	6.063	5.076	970493	2273115	8.131	14.535 #
28) L6 AR-1254-3	6.458	5.503	932418	665354	7.878	2.563 #
29) L6 AR-1254-4	6.775	5.757	627584	544608	7.539	3.251 #
30) L6 AR-1254-5	7.215	6.200	911680	1542534	10.142	6.203 #
31) L7 AR-1260-1	0.000	5.631	0	1096267	N.D.	5.635 #
32) L7 AR-1260-2	6.897f	5.818f	645712	447081	5.887	1.881 #
33) L7 AR-1260-3	7.307	6.021	797242	791449	9.779	3.509 #
34) L7 AR-1260-4	7.531f	6.505	935567	989655	10.403	4.996 #
35) L7 AR-1260-5	7.880	6.785	624095	824426	3.852	1.779 #
36) L8 AR-1262-1	7.307	6.229	797242	262720	6.945	1.009 #
37) L8 AR-1262-2	7.880	6.785	624095	824426	3.454	1.696 #
38) L8 AR-1262-3	0.000	7.089	0	902013	N.D.	4.539 #
39) L8 AR-1262-4	0.000	7.147	0	422115	N.D.	1.134 #
41) L9 AR-1268-1	0.000	7.089	0	902013	N.D.	1.549 #
42) L9 AR-1268-2	0.000	7.147	0	422115	N.D.	0.784 #

Data Path : Z:\pestpcbsrv\HPCHEM1\ECD_R\Data\PR081023\
 Data File : PR062577.D
 Signal(s) : Signal #1: ECD1A.ch Signal #2: ECD2B.ch
 Acq On : 09 Aug 2023 15:56
 Operator : YP\AJ
 Sample : 03572-09
 Misc : AR1232 MDL 25 PPB
 ALS Vial : 24 Sample Multiplier: 1

Instrument :
 ECD_R
 ClientSampleId :

Integration File signal 1: autoint1.e
 Integration File signal 2: autoint2.e
 Quant Time: Aug 09 22:10:37 2023
 Quant Method : Z:\pestpcbsrv\HPCHEM1\ECD_R\Method\PR080923.M
 Quant Title : GC EXTRACTABLES
 QLast Update : Wed Aug 09 01:27:38 2023
 Response via : Initial Calibration
 Integrator: ChemStation

Volume Inj. : 2 µl
 Signal #1 Phase : ZB-MR1 Signal #2 Phase: ZB-MR2
 Signal #1 Info : 30Mx0.32mmx 0.50µ Signal #2 Info : 30M x 0.32mm x 0.25µm

	Compound	RT#1	RT#2	Resp#1	Resp#2	ng/ml	ng/ml
43)	L9 AR-1268-3	8.490f	7.379	621717	640985	3.505	1.359 #
45)	L9 AR-1268-5	9.302	7.989	512841	1279568	1.009	0.855

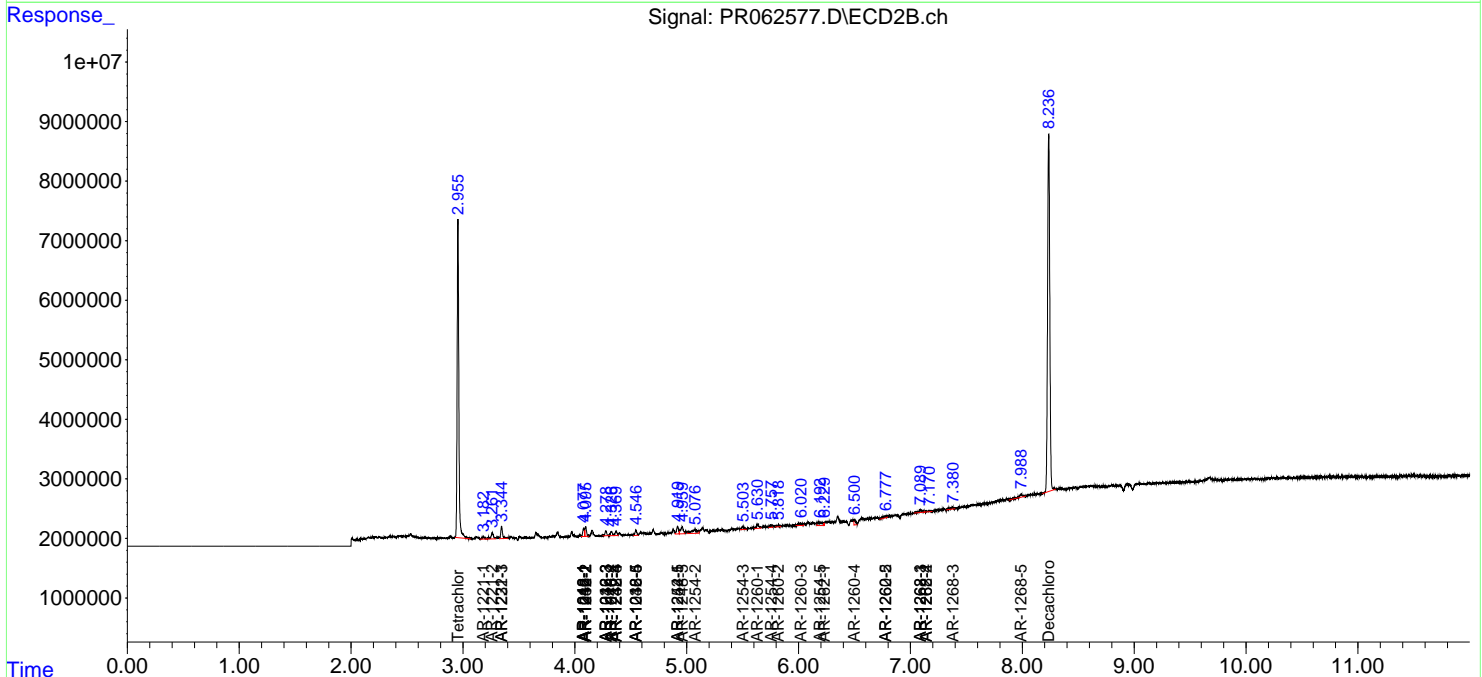
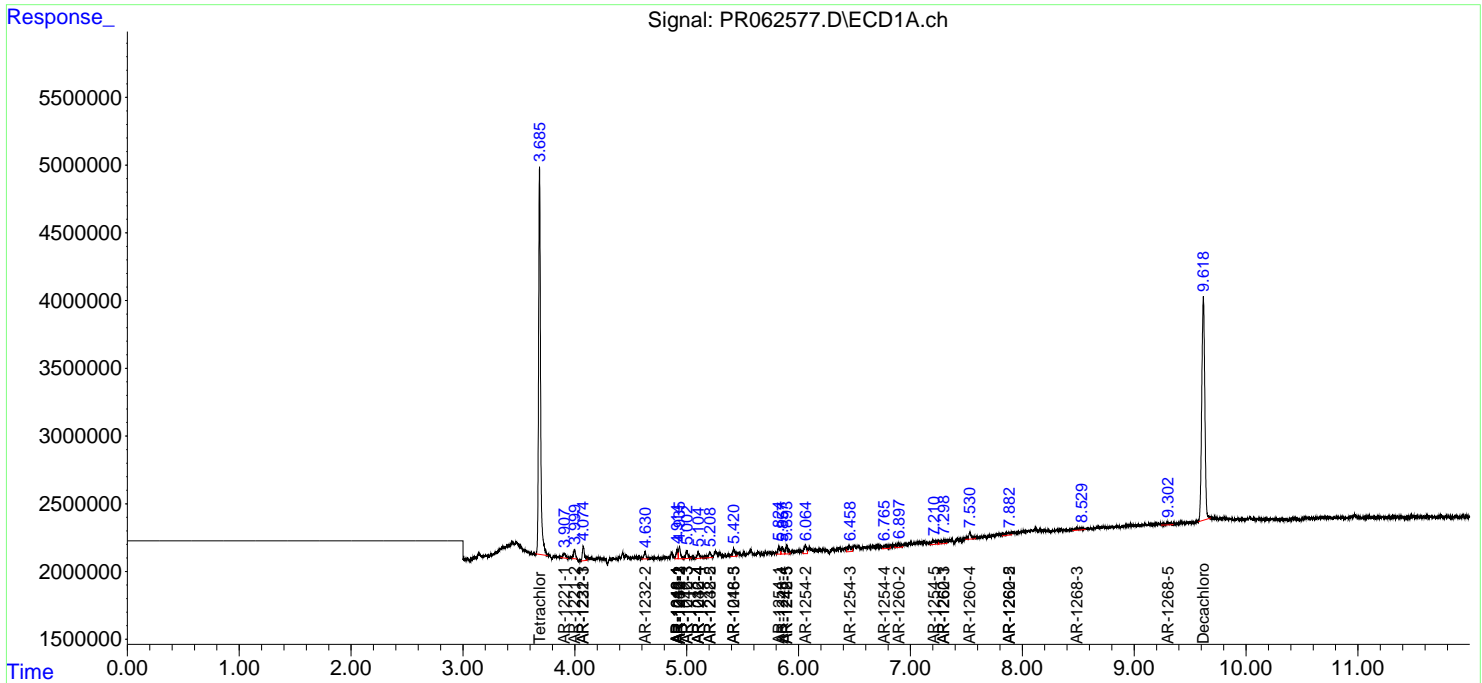
(f)=RT Delta > 1/2 Window (#)=Amounts differ by > 25% (m)=manual int.

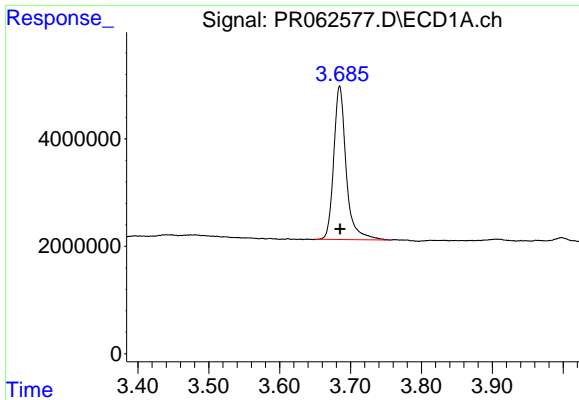
Data Path : Z:\pestpcbsrv\HPCHEM1\ECD_R\Data\PR081023\
 Data File : PR062577.D
 Signal(s) : Signal #1: ECD1A.ch Signal #2: ECD2B.ch
 Acq On : 09 Aug 2023 15:56
 Operator : YP\AJ
 Sample : 03572-09
 Misc : AR1232 MDL 25 PPB
 ALS Vial : 24 Sample Multiplier: 1

Instrument :
 ECD_R
 ClientSampleId :

Integration File signal 1: autoint1.e
 Integration File signal 2: autoint2.e
 Quant Time: Aug 09 22:10:37 2023
 Quant Method : Z:\pestpcbsrv\HPCHEM1\ECD_R\Method\PR080923.M
 Quant Title : GC EXTRACTABLES
 QLast Update : Wed Aug 09 01:27:38 2023
 Response via : Initial Calibration
 Integrator: ChemStation

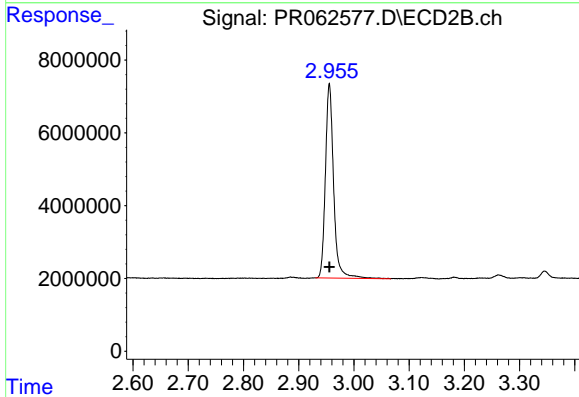
Volume Inj. : 2 µl
 Signal #1 Phase : ZB-MR1 Signal #2 Phase: ZB-MR2
 Signal #1 Info : 30Mx0.32mmx 0.50µ Signal #2 Info : 30M x 0.32mm x 0.25µm



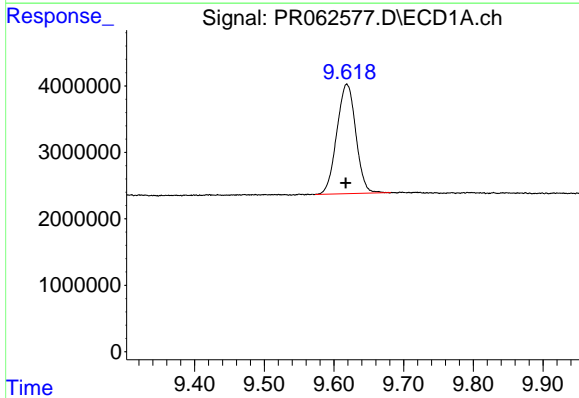


#1 Tetrachloro-m-xylene
 R.T.: 3.685 min
 Delta R.T.: 0.000 min
 Response: 34806369
 Conc: 17.24 ng/ml

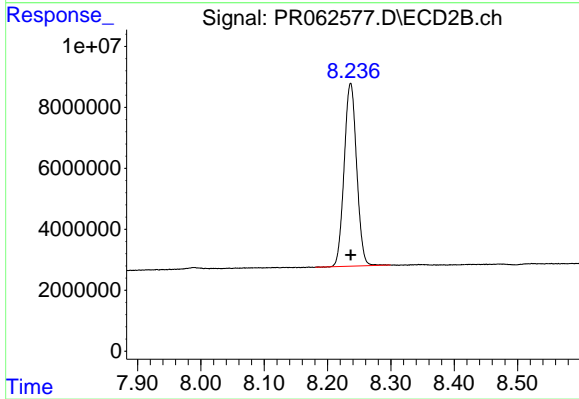
Instrument :
 ECD_R
 ClientSampleId :



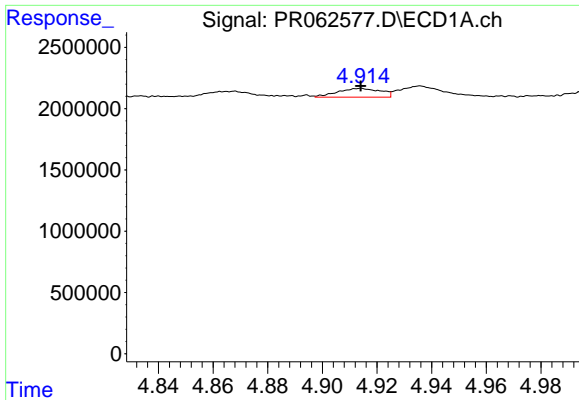
#1 Tetrachloro-m-xylene
 R.T.: 2.956 min
 Delta R.T.: 0.000 min
 Response: 54996773
 Conc: 18.94 ng/ml



#2 Decachlorobiphenyl
 R.T.: 9.618 min
 Delta R.T.: 0.002 min
 Response: 31298162
 Conc: 21.01 ng/ml



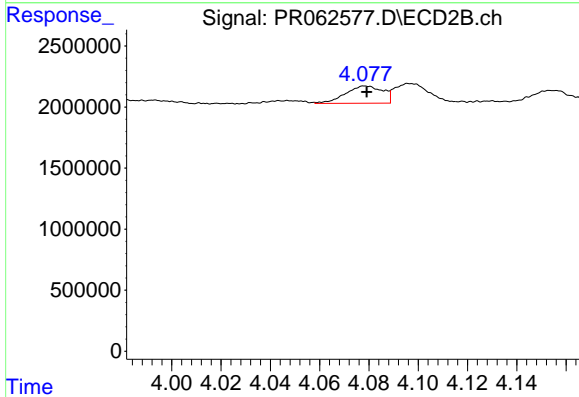
#2 Decachlorobiphenyl
 R.T.: 8.236 min
 Delta R.T.: 0.000 min
 Response: 82272317
 Conc: 19.83 ng/ml



#3 AR-1016-1

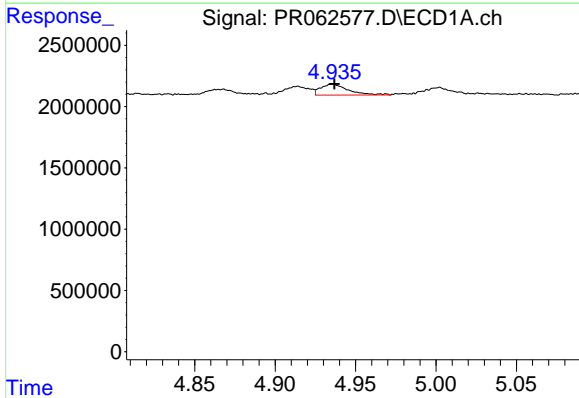
R.T.: 4.914 min
 Delta R.T.: 0.000 min
 Response: 776075
 Conc: 11.56 ng/ml

Instrument :
 ECD_R
 ClientSampleId :



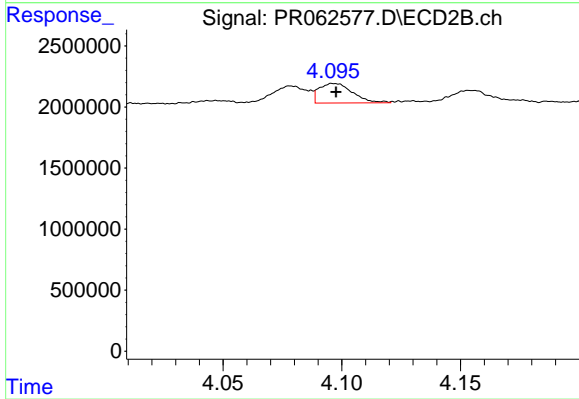
#3 AR-1016-1

R.T.: 4.079 min
 Delta R.T.: 0.000 min
 Response: 1476775
 Conc: 13.61 ng/ml



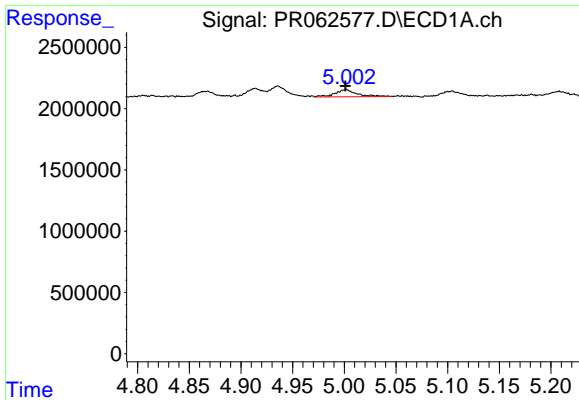
#4 AR-1016-2

R.T.: 4.936 min
 Delta R.T.: -0.001 min
 Response: 1075747
 Conc: 11.14 ng/ml



#4 AR-1016-2

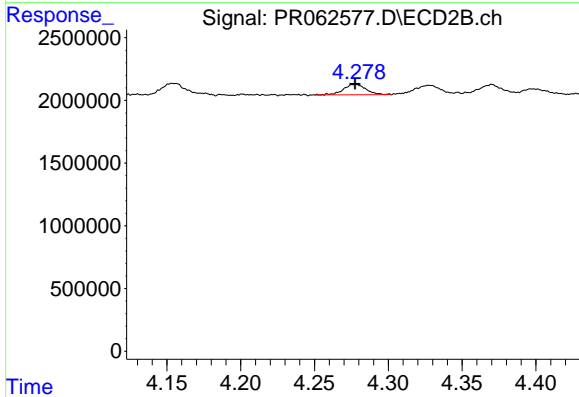
R.T.: 4.097 min
 Delta R.T.: 0.000 min
 Response: 1570744
 Conc: 10.29 ng/ml



#5 AR-1016-3

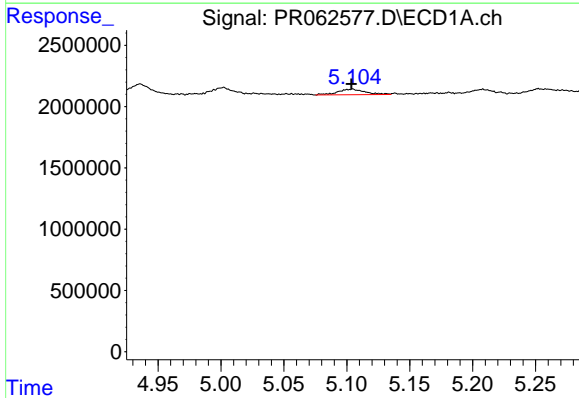
R.T.: 5.002 min
 Delta R.T.: 0.000 min
 Response: 881690
 Conc: 14.31 ng/ml

Instrument :
 ECD_R
 ClientSampleId :



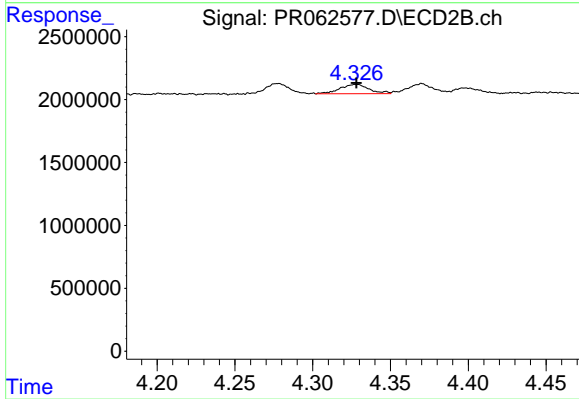
#5 AR-1016-3

R.T.: 4.278 min
 Delta R.T.: 0.000 min
 Response: 886849
 Conc: 10.58 ng/ml



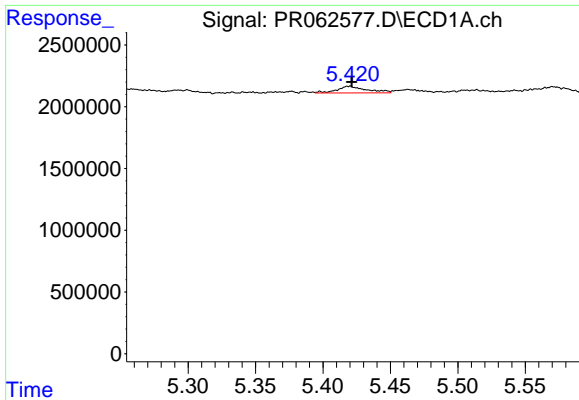
#6 AR-1016-4

R.T.: 5.104 min
 Delta R.T.: 0.000 min
 Response: 689065
 Conc: 14.14 ng/ml



#6 AR-1016-4

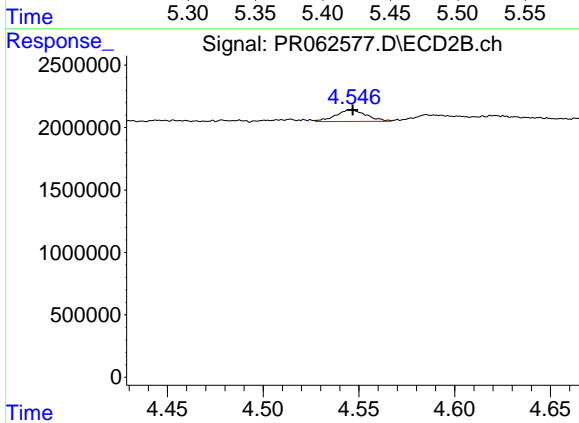
R.T.: 4.328 min
 Delta R.T.: 0.000 min
 Response: 966825
 Conc: 14.25 ng/ml



#7 AR-1016-5

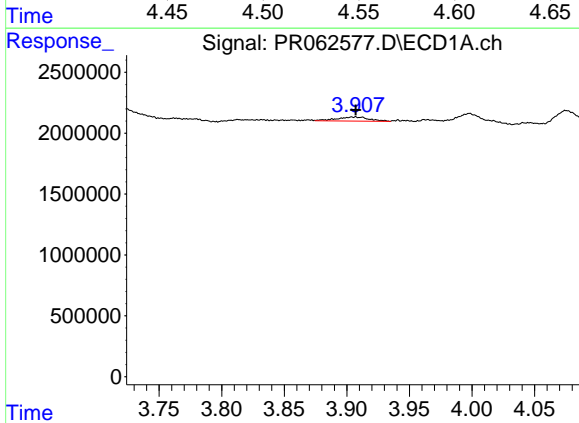
R.T.: 5.419 min
 Delta R.T.: -0.002 min
 Response: 840327
 Conc: 16.11 ng/ml

Instrument :
 ECD_R
 ClientSampleId :



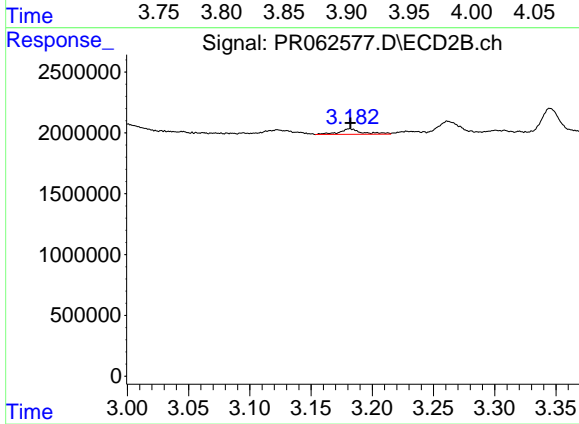
#7 AR-1016-5

R.T.: 4.546 min
 Delta R.T.: 0.000 min
 Response: 1030219
 Conc: 11.32 ng/ml



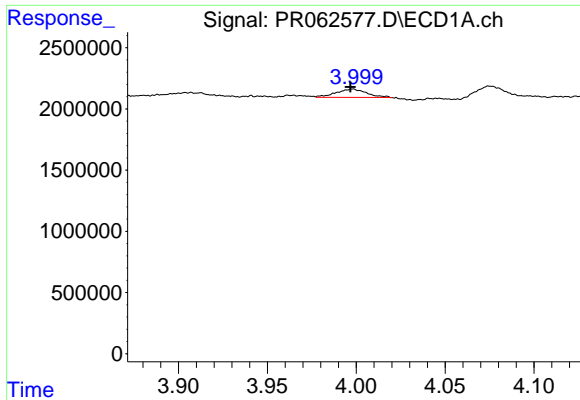
#8 AR-1221-1

R.T.: 3.912 min
 Delta R.T.: 0.005 min
 Response: 617683
 Conc: 25.25 ng/ml



#8 AR-1221-1

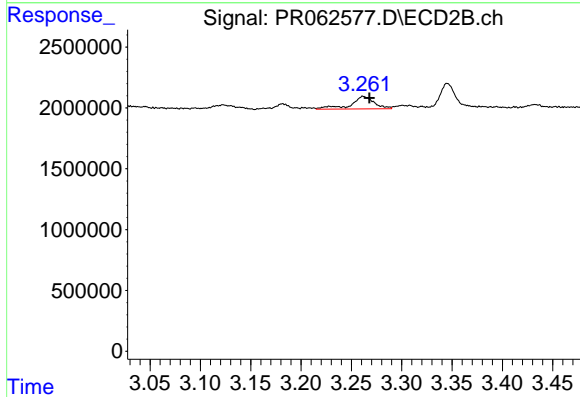
R.T.: 3.182 min
 Delta R.T.: 0.000 min
 Response: 592730
 Conc: 15.67 ng/ml



#9 AR-1221-2

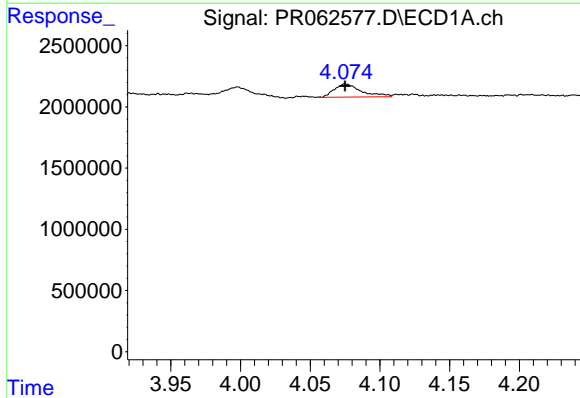
R.T.: 3.998 min
 Delta R.T.: 0.001 min
 Response: 815374
 Conc: 52.63 ng/ml

Instrument :
 ECD_R
 ClientSampleId :



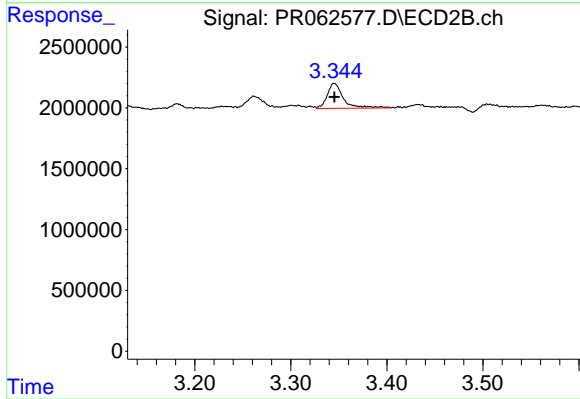
#9 AR-1221-2

R.T.: 3.262 min
 Delta R.T.: -0.006 min
 Response: 1645424
 Conc: 45.57 ng/ml



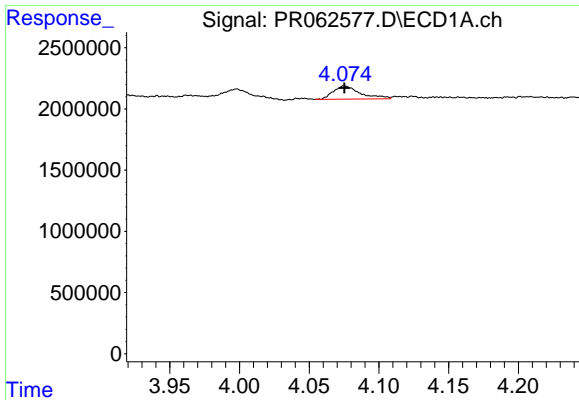
#10 AR-1221-3

R.T.: 4.075 min
 Delta R.T.: 0.000 min
 Response: 1464849
 Conc: 24.40 ng/ml



#10 AR-1221-3

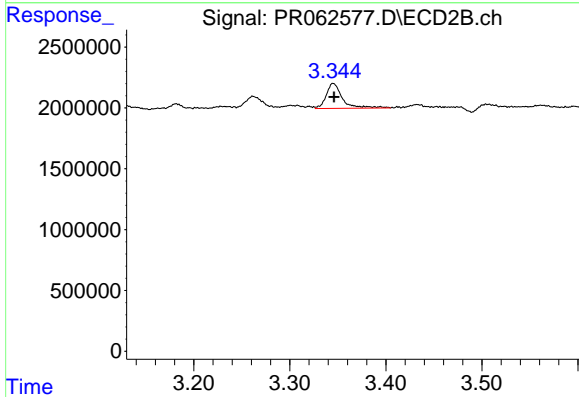
R.T.: 3.345 min
 Delta R.T.: 0.000 min
 Response: 2396970
 Conc: 26.65 ng/ml



#11 AR-1232-1

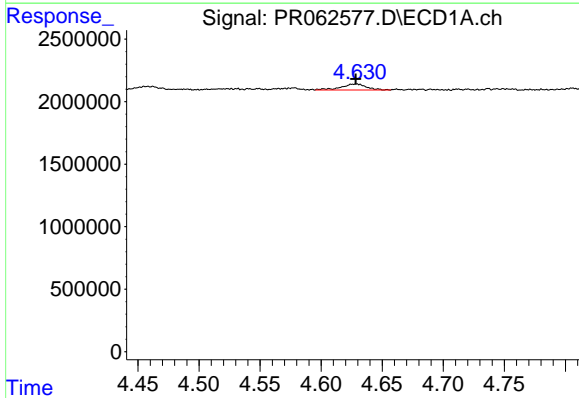
R.T.: 4.075 min
 Delta R.T.: 0.000 min
 Response: 1464849
 Conc: 29.49 ng/ml

Instrument :
 ECD_R
 ClientSampleId :



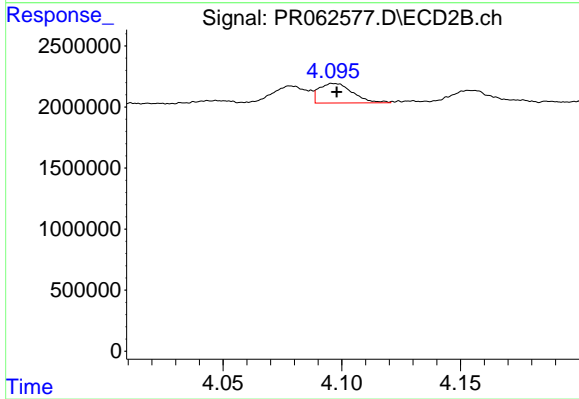
#11 AR-1232-1

R.T.: 3.345 min
 Delta R.T.: 0.000 min
 Response: 2396970
 Conc: 32.01 ng/ml



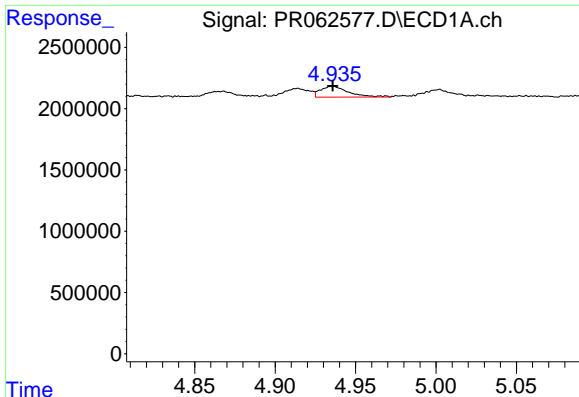
#12 AR-1232-2

R.T.: 4.629 min
 Delta R.T.: 0.000 min
 Response: 699568
 Conc: 28.33 ng/ml



#12 AR-1232-2

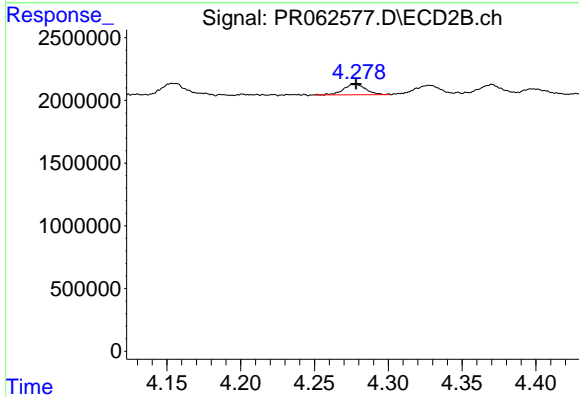
R.T.: 4.097 min
 Delta R.T.: -0.001 min
 Response: 1570744
 Conc: 22.77 ng/ml



#13 AR-1232-3

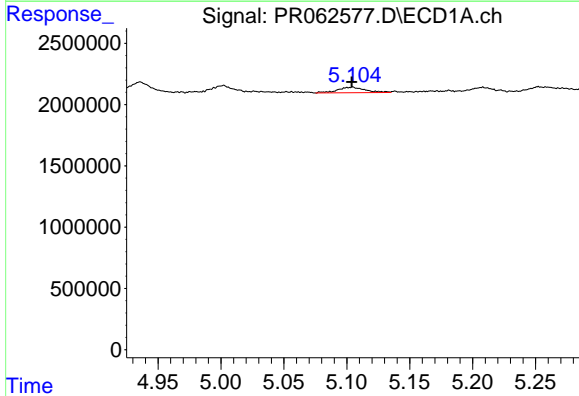
R.T.: 4.936 min
 Delta R.T.: 0.000 min
 Response: 1075747
 Conc: 25.19 ng/ml

Instrument :
 ECD_R
 ClientSampleId :



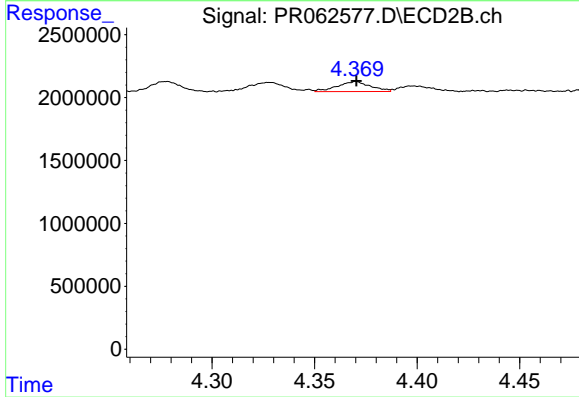
#13 AR-1232-3

R.T.: 4.278 min
 Delta R.T.: 0.000 min
 Response: 886849
 Conc: 23.90 ng/ml



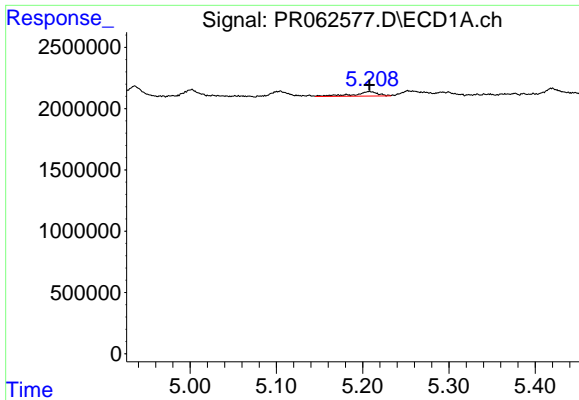
#14 AR-1232-4

R.T.: 5.104 min
 Delta R.T.: 0.000 min
 Response: 689065
 Conc: 32.60 ng/ml



#14 AR-1232-4

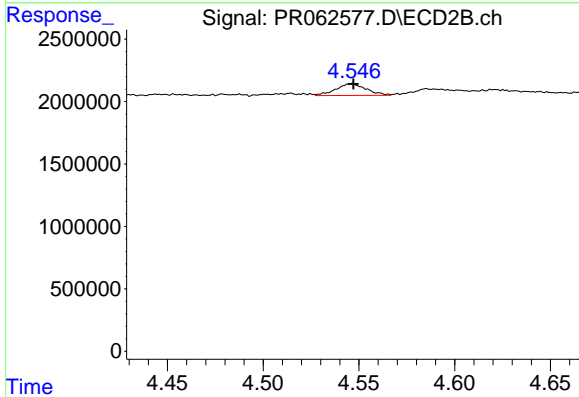
R.T.: 4.370 min
 Delta R.T.: 0.000 min
 Response: 893880
 Conc: 26.40 ng/ml



#15 AR-1232-5

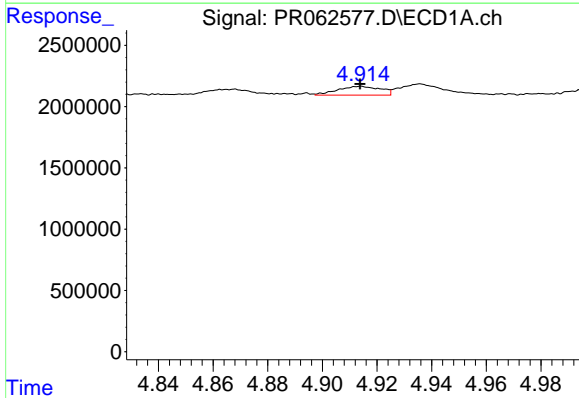
R.T.: 5.208 min
 Delta R.T.: 0.000 min
 Response: 721862
 Conc: 41.51 ng/ml

Instrument :
 ECD_R
 ClientSampleId :



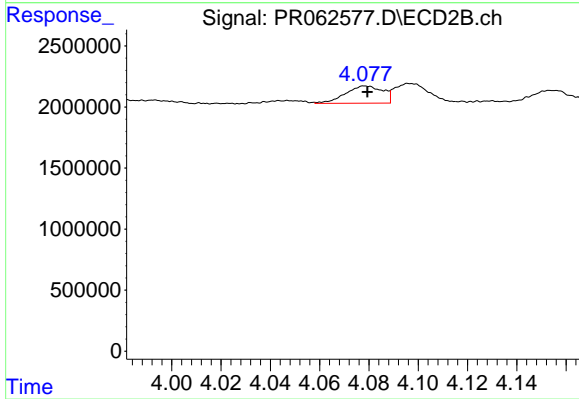
#15 AR-1232-5

R.T.: 4.546 min
 Delta R.T.: -0.001 min
 Response: 1030219
 Conc: 26.22 ng/ml



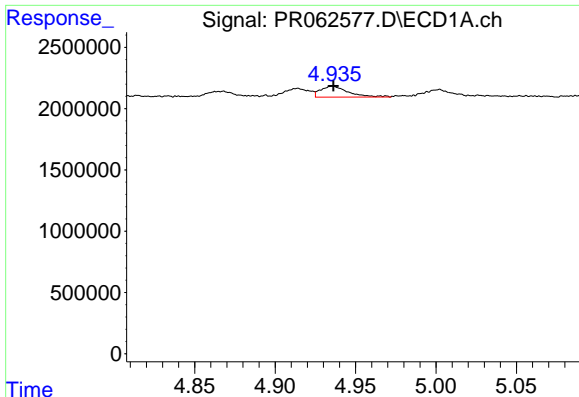
#16 AR-1242-1

R.T.: 4.914 min
 Delta R.T.: 0.000 min
 Response: 776075
 Conc: 13.92 ng/ml



#16 AR-1242-1

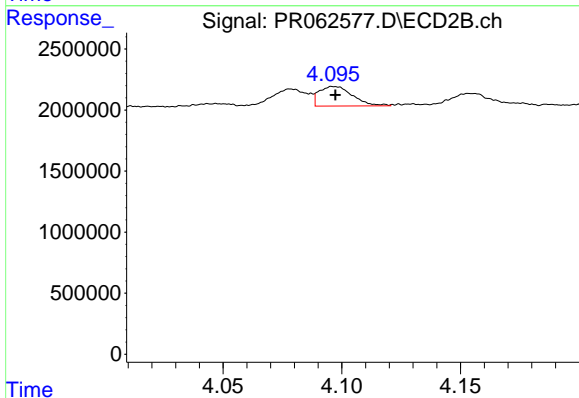
R.T.: 4.079 min
 Delta R.T.: 0.000 min
 Response: 1476775
 Conc: 16.41 ng/ml



#17 AR-1242-2

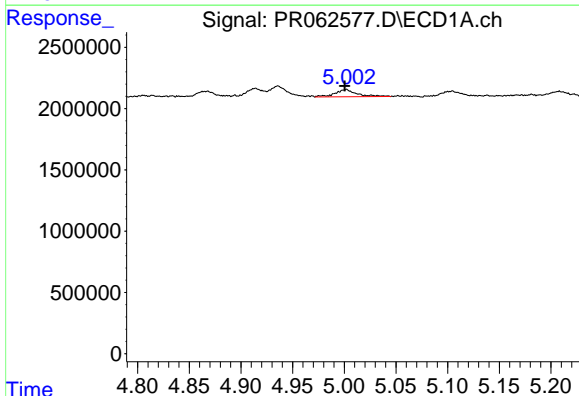
R.T.: 4.936 min
 Delta R.T.: 0.000 min
 Response: 1075747
 Conc: 13.40 ng/ml

Instrument :
 ECD_R
 ClientSampleId :



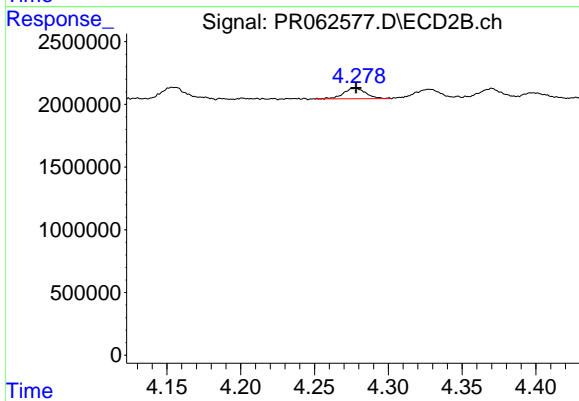
#17 AR-1242-2

R.T.: 4.097 min
 Delta R.T.: 0.000 min
 Response: 1570744
 Conc: 12.53 ng/ml



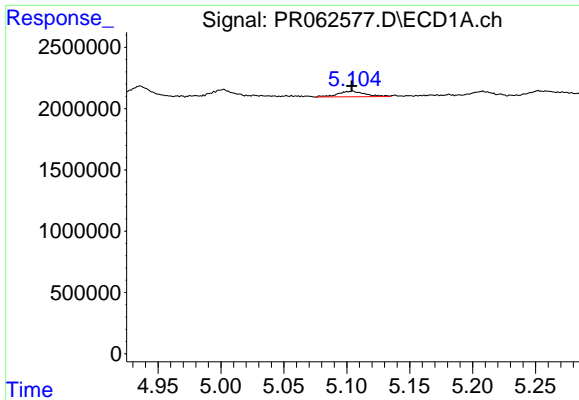
#18 AR-1242-3

R.T.: 5.002 min
 Delta R.T.: 0.001 min
 Response: 881690
 Conc: 17.12 ng/ml



#18 AR-1242-3

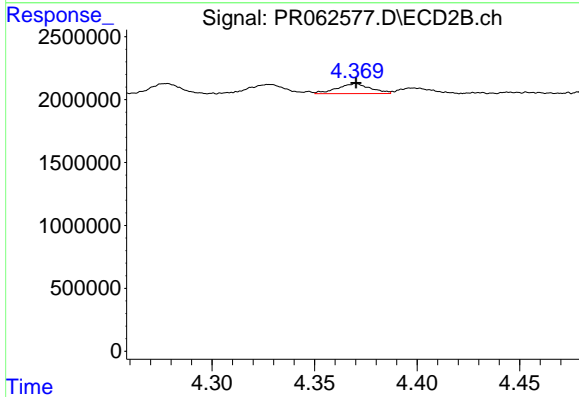
R.T.: 4.278 min
 Delta R.T.: 0.000 min
 Response: 886849
 Conc: 12.82 ng/ml



#19 AR-1242-4

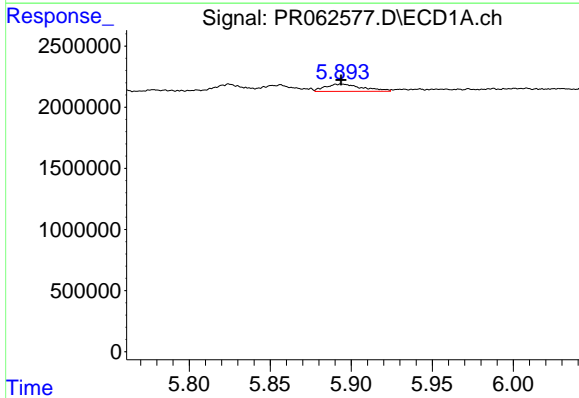
R.T.: 5.104 min
 Delta R.T.: 0.000 min
 Response: 689065
 Conc: 17.05 ng/ml

Instrument :
 ECD_R
 ClientSampleId :



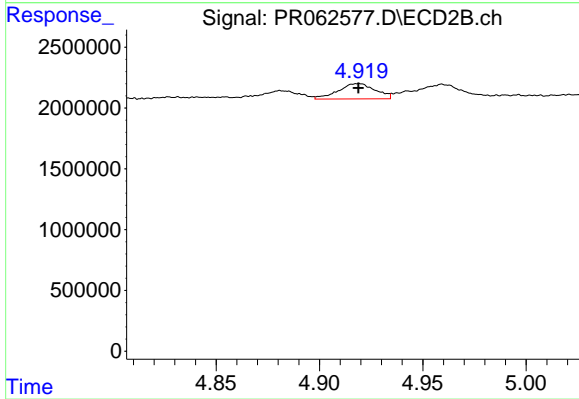
#19 AR-1242-4

R.T.: 4.370 min
 Delta R.T.: 0.000 min
 Response: 893880
 Conc: 13.03 ng/ml



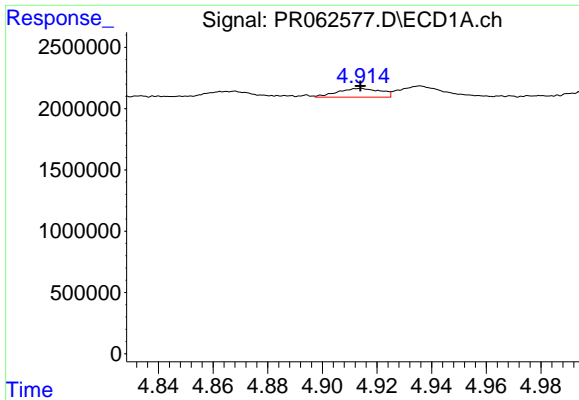
#20 AR-1242-5

R.T.: 5.894 min
 Delta R.T.: 0.000 min
 Response: 947698
 Conc: 22.12 ng/ml



#20 AR-1242-5

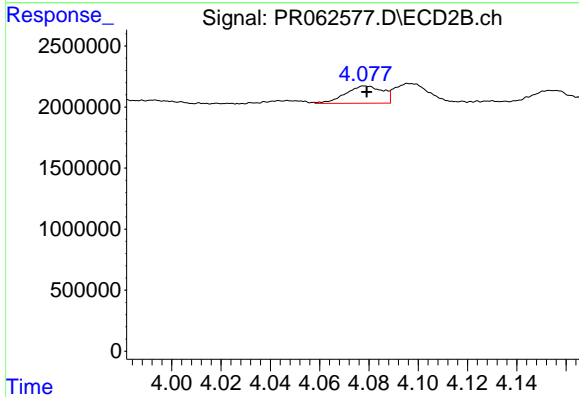
R.T.: 4.919 min
 Delta R.T.: 0.000 min
 Response: 1573160
 Conc: 17.57 ng/ml



#21 AR-1248-1

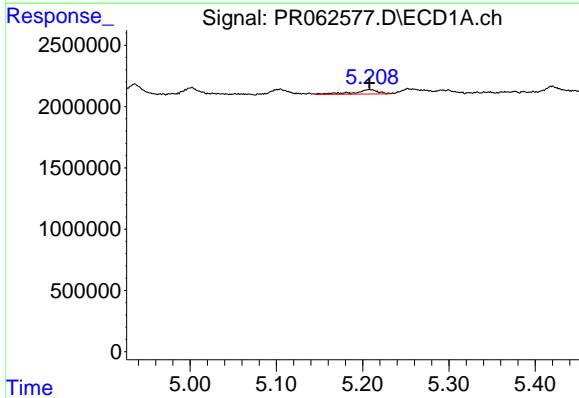
R.T.: 4.914 min
 Delta R.T.: 0.000 min
 Response: 776075
 Conc: 18.89 ng/ml

Instrument :
 ECD_R
 ClientSampleId :



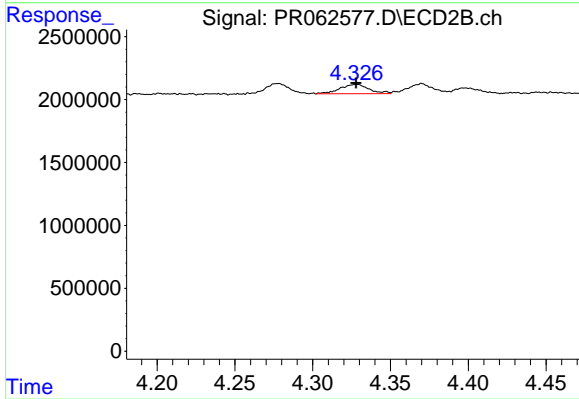
#21 AR-1248-1

R.T.: 4.079 min
 Delta R.T.: 0.000 min
 Response: 1476775
 Conc: 22.07 ng/ml



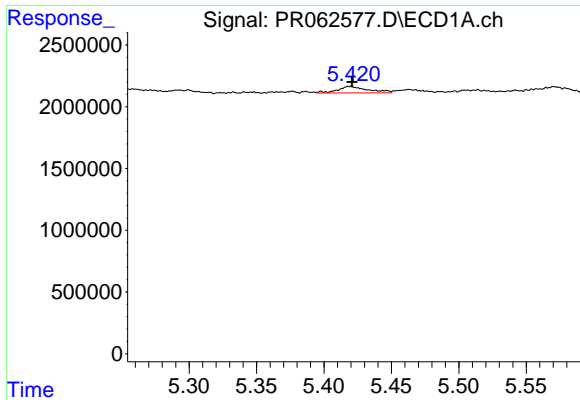
#22 AR-1248-2

R.T.: 5.208 min
 Delta R.T.: 0.000 min
 Response: 721862
 Conc: 11.92 ng/ml



#22 AR-1248-2

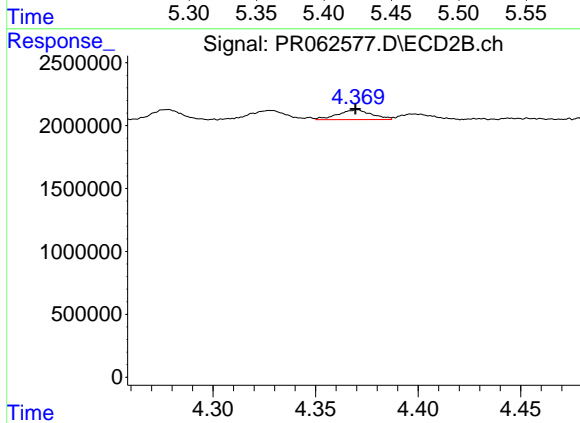
R.T.: 4.328 min
 Delta R.T.: 0.000 min
 Response: 966825
 Conc: 10.09 ng/ml



#23 AR-1248-3

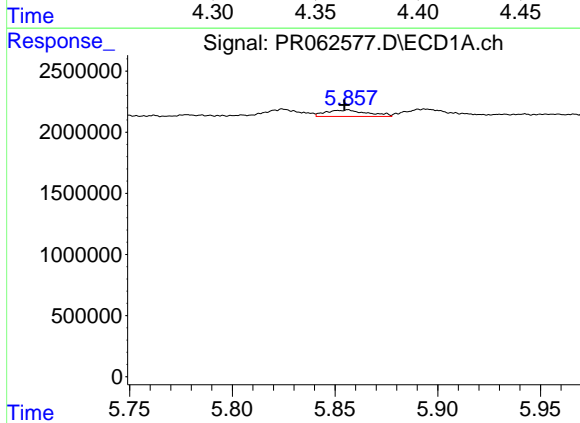
R.T.: 5.419 min
 Delta R.T.: -0.001 min
 Response: 840327
 Conc: 11.98 ng/ml

Instrument :
 ECD_R
 ClientSampleId :



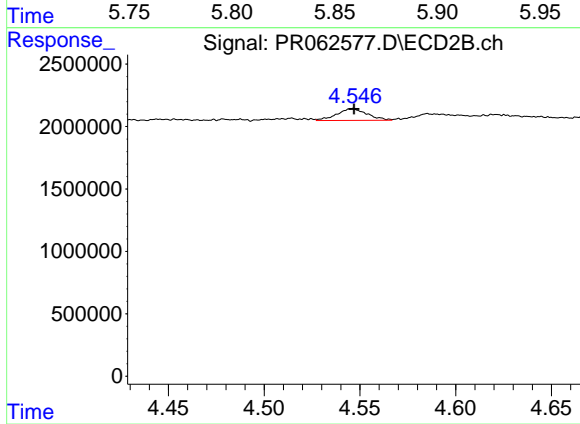
#23 AR-1248-3

R.T.: 4.370 min
 Delta R.T.: 0.000 min
 Response: 893880
 Conc: 9.05 ng/ml



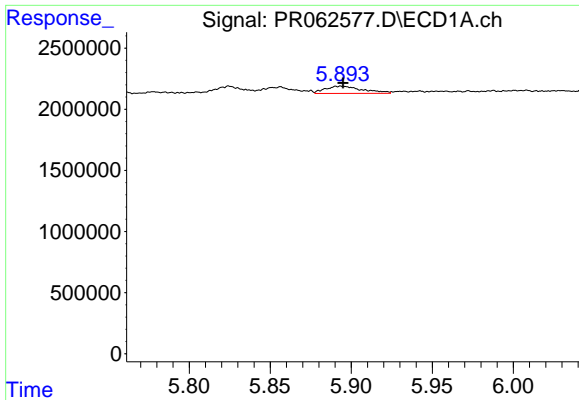
#24 AR-1248-4

R.T.: 5.856 min
 Delta R.T.: 0.002 min
 Response: 738451
 Conc: 10.21 ng/ml



#24 AR-1248-4

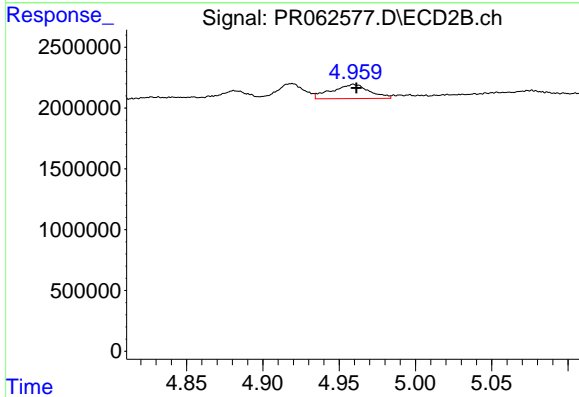
R.T.: 4.546 min
 Delta R.T.: 0.000 min
 Response: 1030219
 Conc: 8.68 ng/ml



#25 AR-1248-5

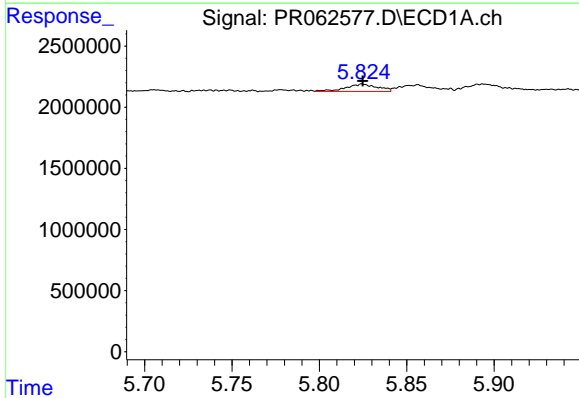
R.T.: 5.894 min
 Delta R.T.: 0.000 min
 Response: 947698
 Conc: 13.38 ng/ml

Instrument :
 ECD_R
 ClientSampleId :



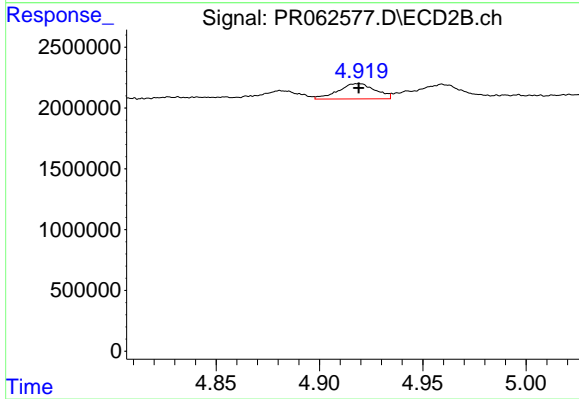
#25 AR-1248-5

R.T.: 4.960 min
 Delta R.T.: -0.002 min
 Response: 2000751
 Conc: 16.74 ng/ml



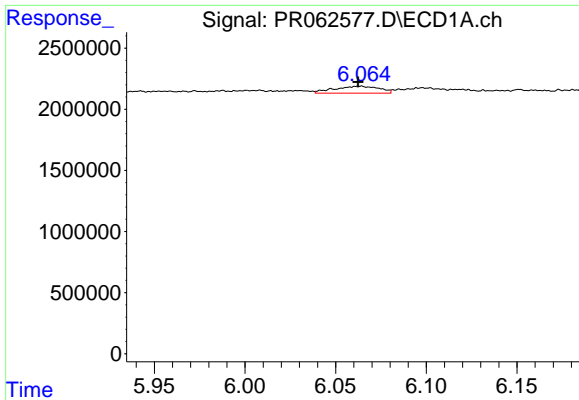
#26 AR-1254-1

R.T.: 5.825 min
 Delta R.T.: 0.000 min
 Response: 765722
 Conc: 9.58 ng/ml



#26 AR-1254-1

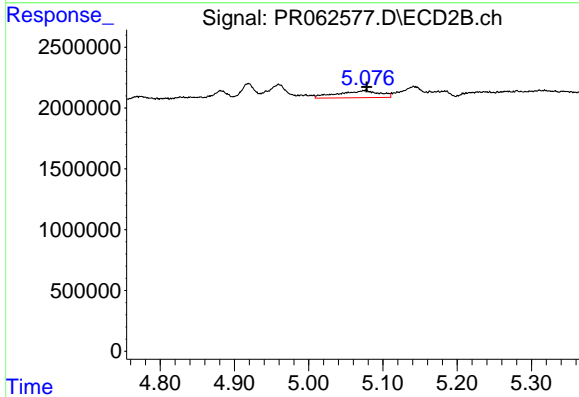
R.T.: 4.919 min
 Delta R.T.: 0.000 min
 Response: 1573160
 Conc: 8.78 ng/ml



#27 AR-1254-2

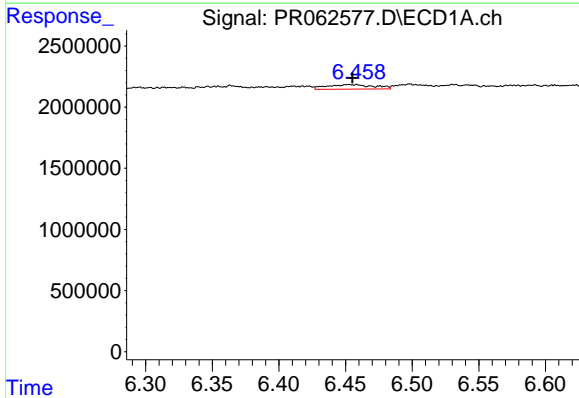
R.T.: 6.063 min
 Delta R.T.: 0.000 min
 Response: 970493
 Conc: 8.13 ng/ml

Instrument :
 ECD_R
 ClientSampleId :



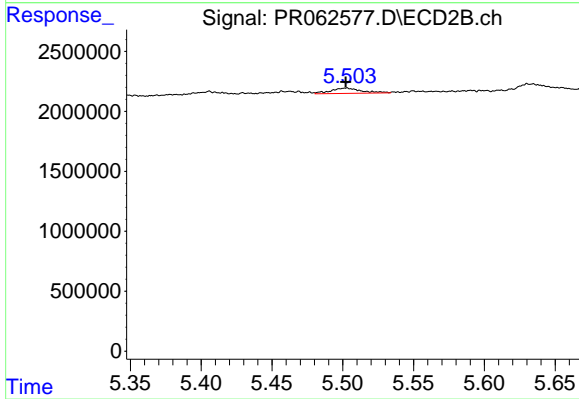
#27 AR-1254-2

R.T.: 5.076 min
 Delta R.T.: -0.002 min
 Response: 2273115
 Conc: 14.53 ng/ml



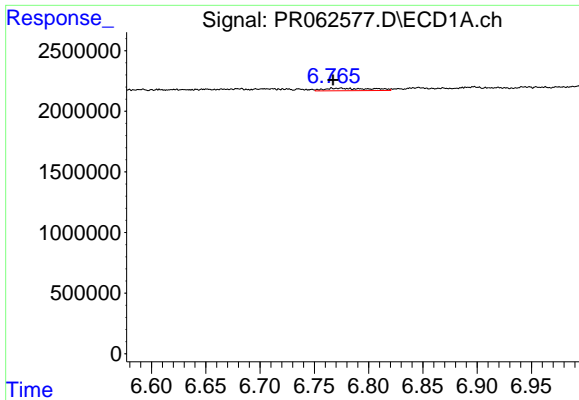
#28 AR-1254-3

R.T.: 6.458 min
 Delta R.T.: 0.003 min
 Response: 932418
 Conc: 7.88 ng/ml



#28 AR-1254-3

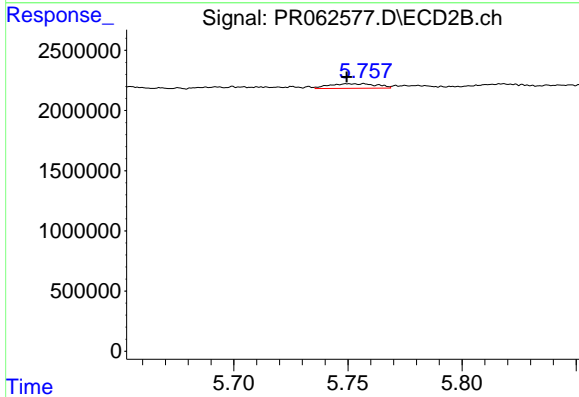
R.T.: 5.503 min
 Delta R.T.: 0.000 min
 Response: 665354
 Conc: 2.56 ng/ml



#29 AR-1254-4

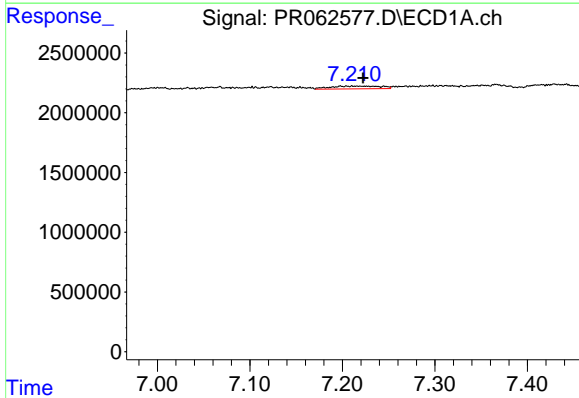
R.T.: 6.775 min
 Delta R.T.: 0.007 min
 Response: 627584
 Conc: 7.54 ng/ml

Instrument :
 ECD_R
 ClientSampleId :



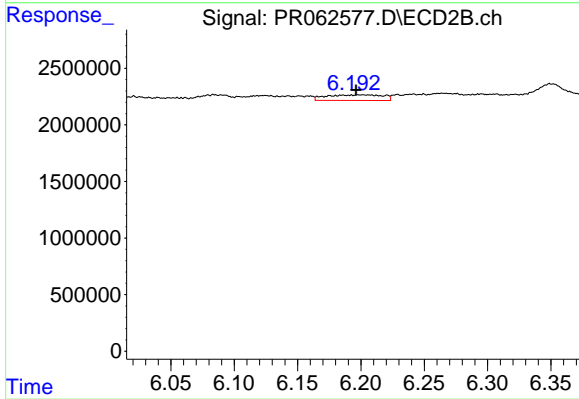
#29 AR-1254-4

R.T.: 5.757 min
 Delta R.T.: 0.007 min
 Response: 544608
 Conc: 3.25 ng/ml



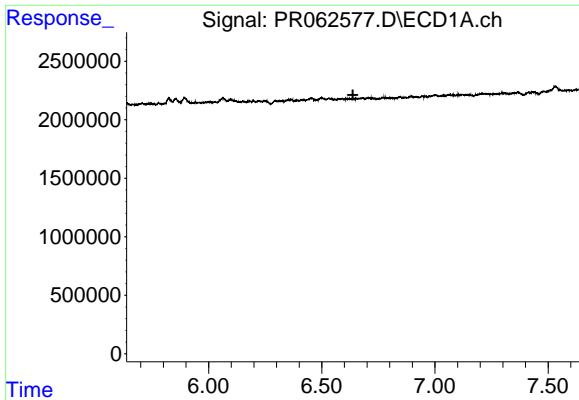
#30 AR-1254-5

R.T.: 7.215 min
 Delta R.T.: -0.007 min
 Response: 911680
 Conc: 10.14 ng/ml



#30 AR-1254-5

R.T.: 6.200 min
 Delta R.T.: 0.004 min
 Response: 1542534
 Conc: 6.20 ng/ml

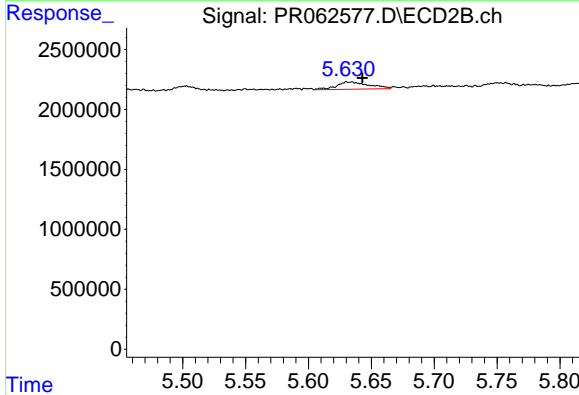


#31 AR-1260-1

R.T.: 0.000 min
 Exp R.T.: 6.638 min
 Response: 0
 Conc: N.D.

Instrument :
 ECD_R
 ClientSampleId :

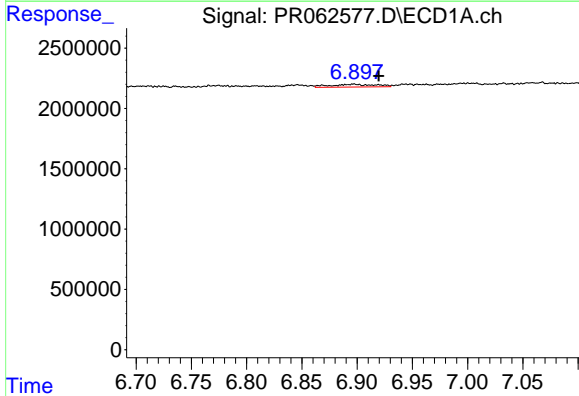
Time



#31 AR-1260-1

R.T.: 5.631 min
 Delta R.T.: -0.012 min
 Response: 1096267
 Conc: 5.63 ng/ml

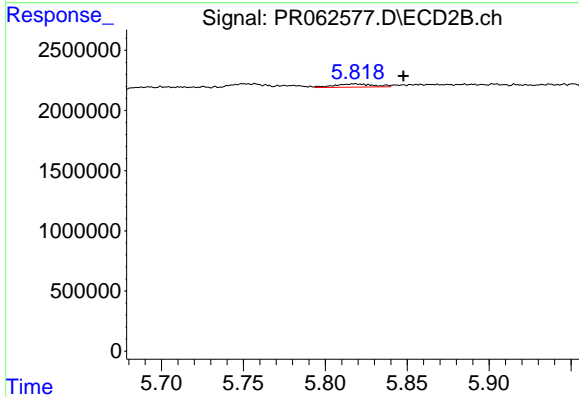
Time



#32 AR-1260-2

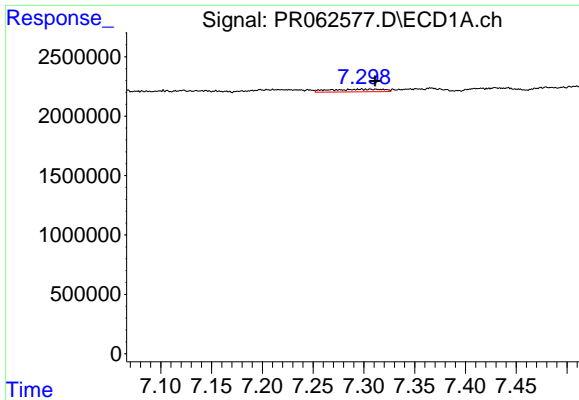
R.T.: 6.897 min
 Delta R.T.: -0.023 min
 Response: 645712
 Conc: 5.89 ng/ml

Time



#32 AR-1260-2

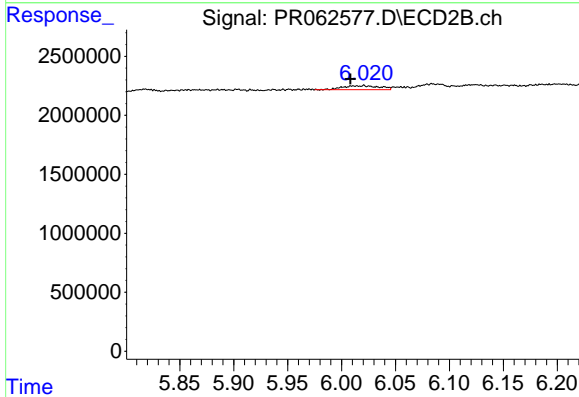
R.T.: 5.818 min
 Delta R.T.: -0.030 min
 Response: 447081
 Conc: 1.88 ng/ml



#33 AR-1260-3

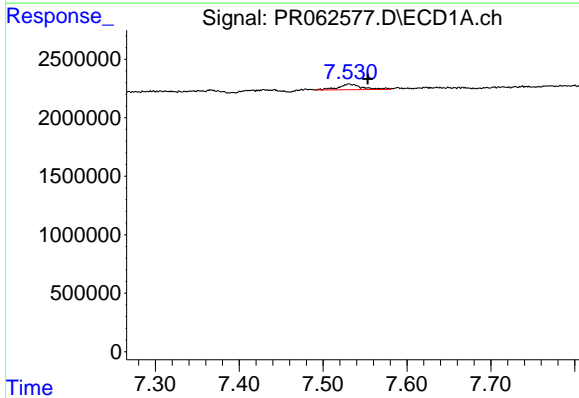
R.T.: 7.307 min
 Delta R.T.: -0.004 min
 Response: 797242
 Conc: 9.78 ng/ml

Instrument :
 ECD_R
 ClientSampleId :



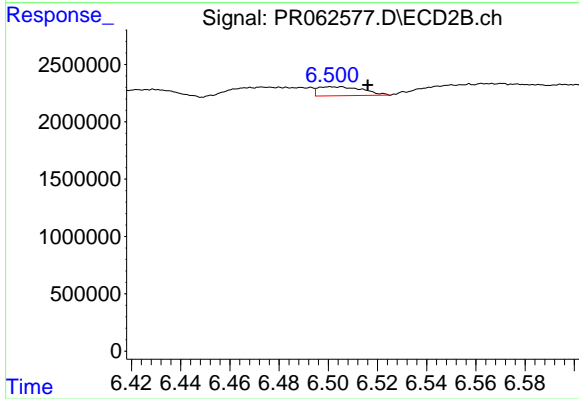
#33 AR-1260-3

R.T.: 6.021 min
 Delta R.T.: 0.012 min
 Response: 791449
 Conc: 3.51 ng/ml



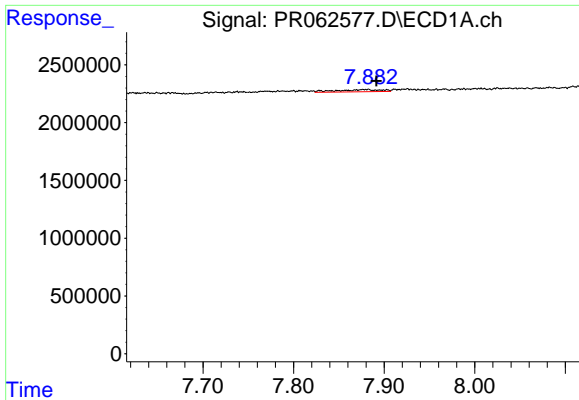
#34 AR-1260-4

R.T.: 7.531 min
 Delta R.T.: -0.022 min
 Response: 935567
 Conc: 10.40 ng/ml



#34 AR-1260-4

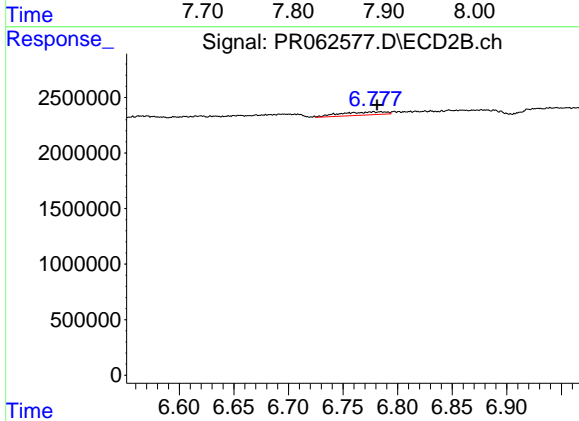
R.T.: 6.505 min
 Delta R.T.: -0.011 min
 Response: 989655
 Conc: 5.00 ng/ml



#35 AR-1260-5

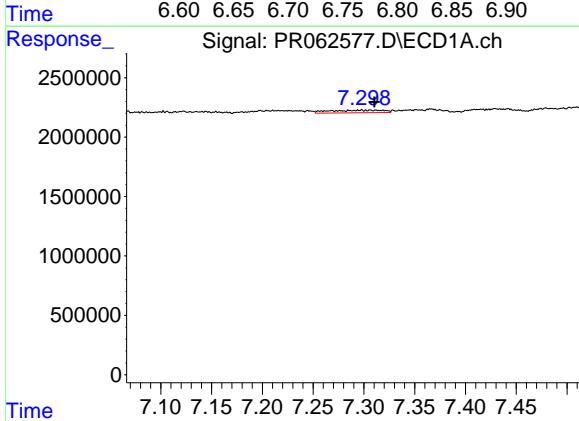
R.T.: 7.880 min
 Delta R.T.: -0.012 min
 Response: 624095
 Conc: 3.85 ng/ml

Instrument :
 ECD_R
 ClientSampleId :



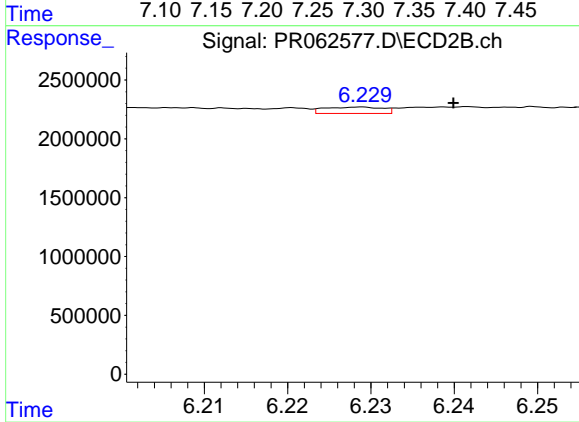
#35 AR-1260-5

R.T.: 6.785 min
 Delta R.T.: 0.004 min
 Response: 824426
 Conc: 1.78 ng/ml



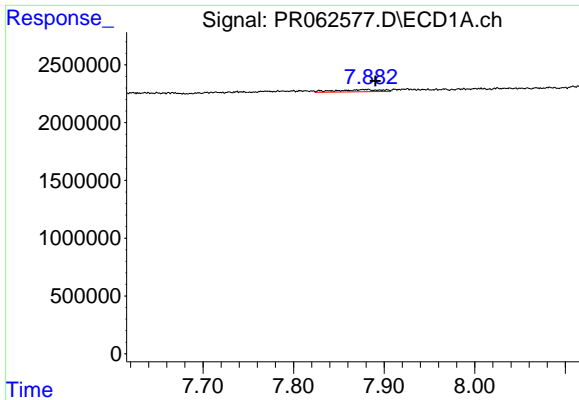
#36 AR-1262-1

R.T.: 7.307 min
 Delta R.T.: -0.003 min
 Response: 797242
 Conc: 6.94 ng/ml



#36 AR-1262-1

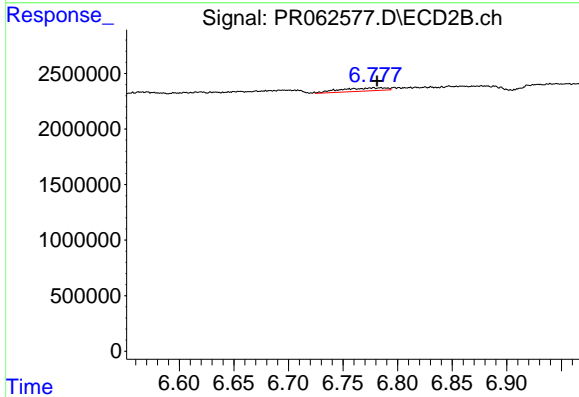
R.T.: 6.229 min
 Delta R.T.: -0.011 min
 Response: 262720
 Conc: 1.01 ng/ml



#37 AR-1262-2

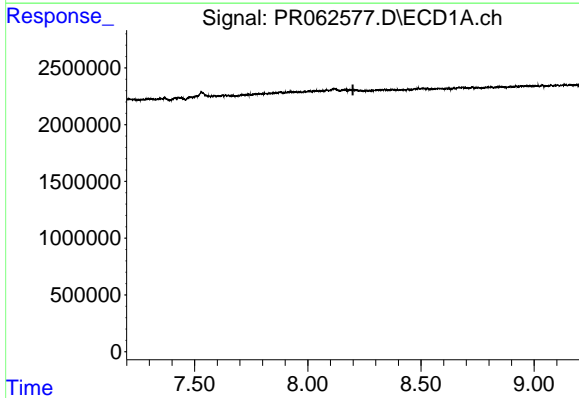
R.T.: 7.880 min
 Delta R.T.: -0.011 min
 Response: 624095
 Conc: 3.45 ng/ml

Instrument :
 ECD_R
 ClientSampleId :



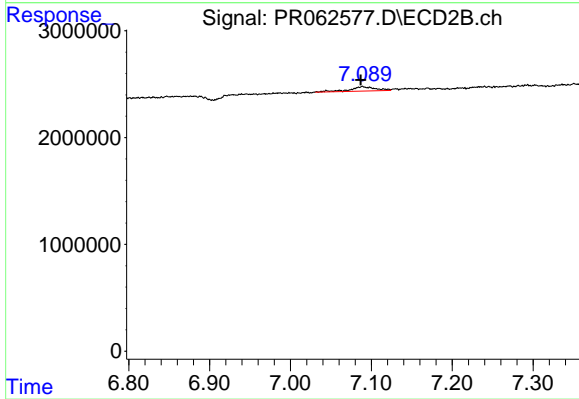
#37 AR-1262-2

R.T.: 6.785 min
 Delta R.T.: 0.004 min
 Response: 824426
 Conc: 1.70 ng/ml



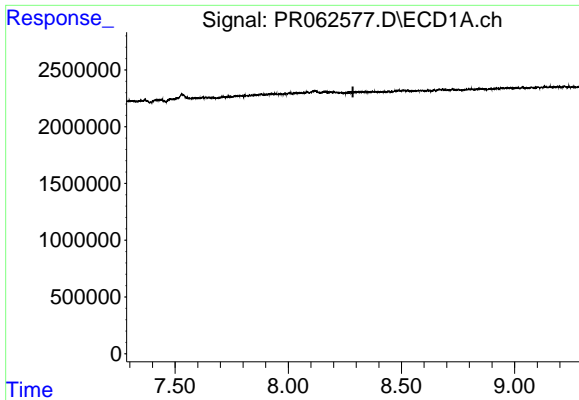
#38 AR-1262-3

R.T.: 0.000 min
 Exp R.T. : 8.199 min
 Response: 0
 Conc: N.D.



#38 AR-1262-3

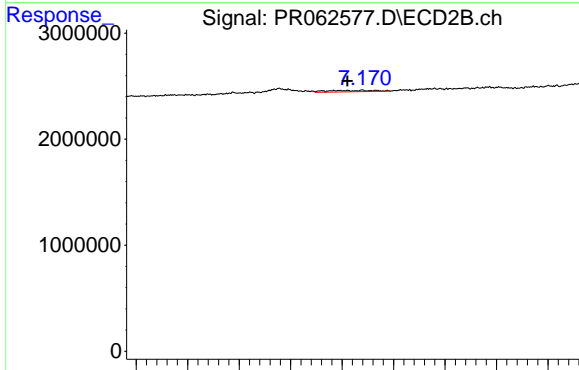
R.T.: 7.089 min
 Delta R.T.: 0.002 min
 Response: 902013
 Conc: 4.54 ng/ml



#39 AR-1262-4

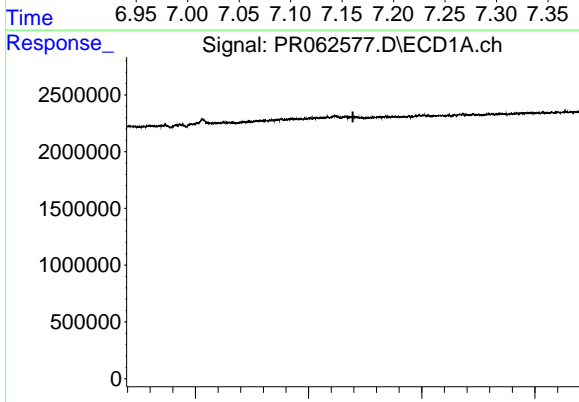
R.T.: 0.000 min
 Exp R.T.: 8.285 min
 Response: 0
 Conc: N.D.

Instrument : ECD_R
 ClientSampleId :



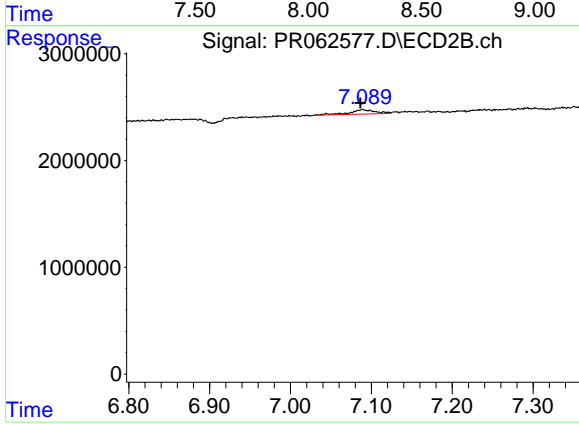
#39 AR-1262-4

R.T.: 7.147 min
 Delta R.T.: -0.009 min
 Response: 422115
 Conc: 1.13 ng/ml



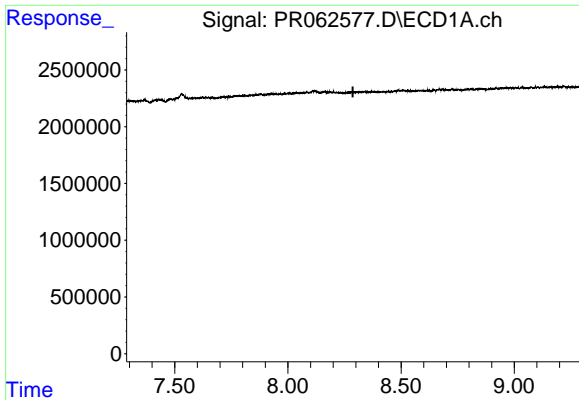
#41 AR-1268-1

R.T.: 0.000 min
 Exp R.T.: 8.196 min
 Response: 0
 Conc: N.D.



#41 AR-1268-1

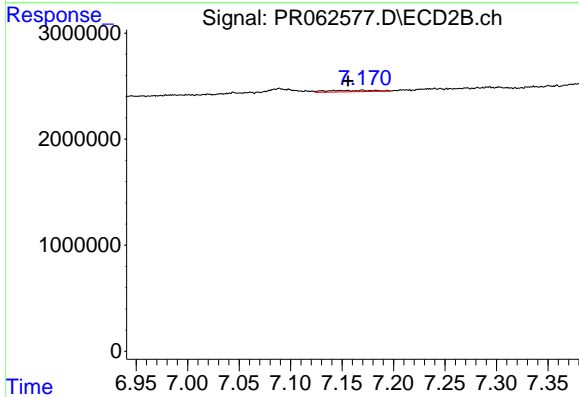
R.T.: 7.089 min
 Delta R.T.: 0.002 min
 Response: 902013
 Conc: 1.55 ng/ml



#42 AR-1268-2

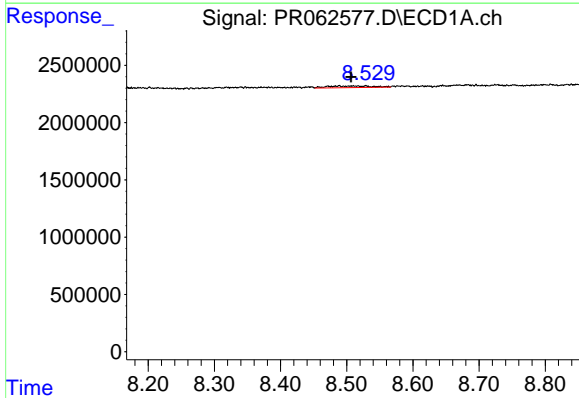
R.T.: 0.000 min
 Exp R.T.: 8.287 min
 Response: 0
 Conc: N.D.

Instrument :
 ECD_R
 ClientSampleId :



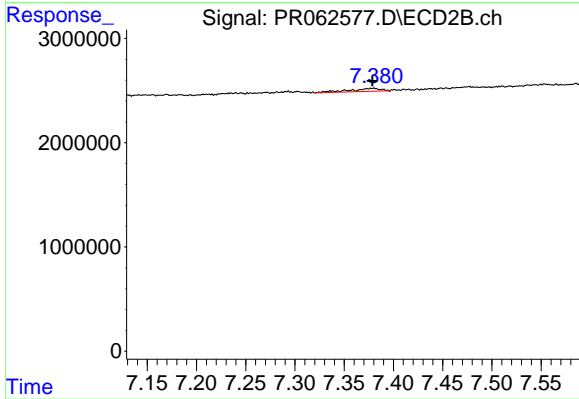
#42 AR-1268-2

R.T.: 7.147 min
 Delta R.T.: -0.009 min
 Response: 422115
 Conc: 0.78 ng/ml



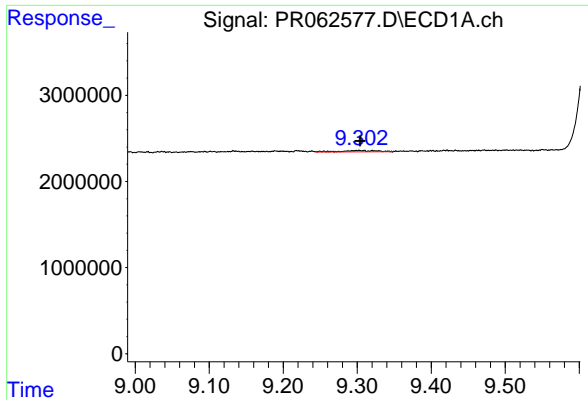
#43 AR-1268-3

R.T.: 8.490 min
 Delta R.T.: -0.017 min
 Response: 621717
 Conc: 3.51 ng/ml



#43 AR-1268-3

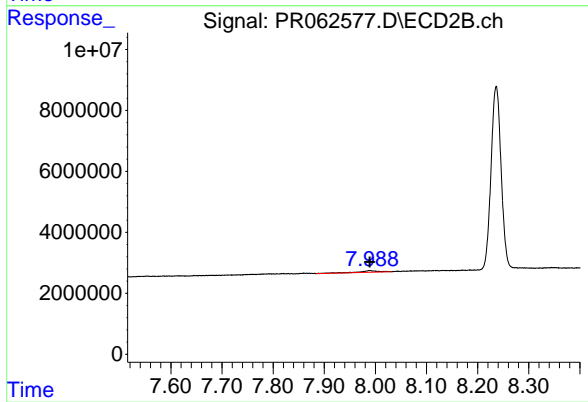
R.T.: 7.379 min
 Delta R.T.: 0.000 min
 Response: 640985
 Conc: 1.36 ng/ml



#45 AR-1268-5

R.T.: 9.302 min
Delta R.T.: -0.002 min
Response: 512841
Conc: 1.01 ng/ml

Instrument :
ECD_R
ClientSampleId :



#45 AR-1268-5

R.T.: 7.989 min
Delta R.T.: 0.000 min
Response: 1279568
Conc: 0.85 ng/ml