

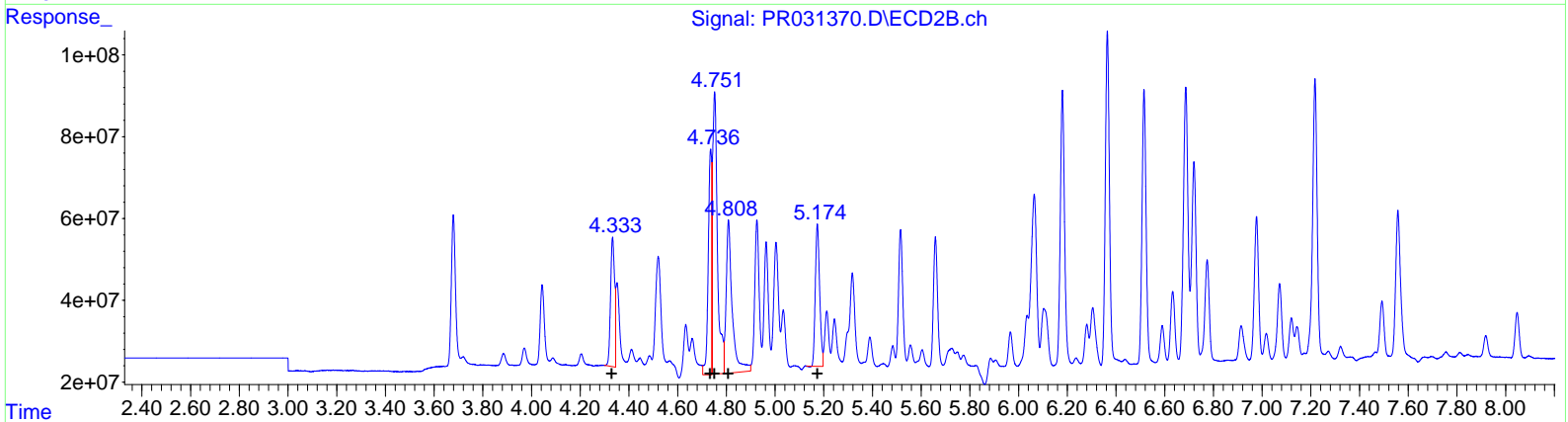
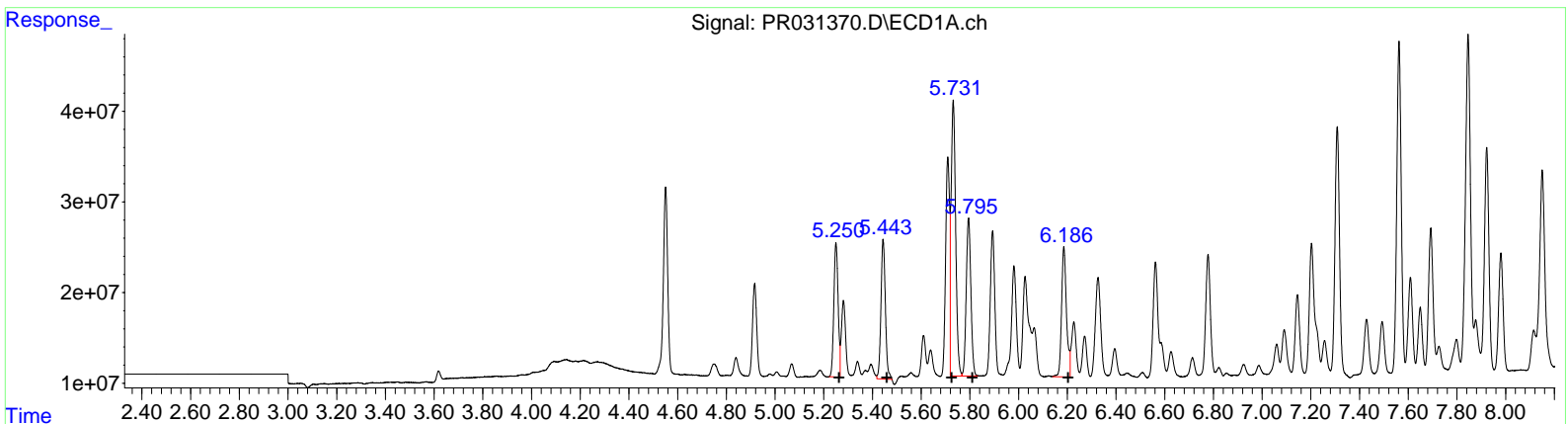
Data Path : Z:\pestpcbsrv\HPCHEM1\ECD_R\Data\PR081118\
 Data File : PR031370.D
 Signal(s) : Signal #1: ECD1A.ch Signal #2: ECD2B.ch
 Acq On : 09 Aug 2018 02:39
 Operator : SM\SJ
 Sample : J4268-10MS
 Misc :
 ALS Vial : 41 Sample Multiplier: 1

Instrument :
 ECD_R
Client Sampled :
 C0AA1MS

Manual Integrations
APPROVED
 Sohil
 8/11/2018 9:24:52 AM

Integration File signal 1: autoint1.e
 Integration File signal 2: autoint2.e
 Quant Time: Aug 13 04:37:07 2018
 Quant Method : Z:\pestpcbsrv\HPCHEM1\ECD_R\Method\PR080918CLP.M
 Quant Title : GC EXTRACTABLES
 QLast Update : Fri Aug 10 04:14:30 2018
 Response via : Initial Calibration
 Integrator: ChemStation

Volume Inj. : 1 µl
 Signal #1 Phase : ZB MR1 Signal #2 Phase: ZB MR2
 Signal #1 Info : 30Mx0.32mmx 0.5µm Signal #2 Info : 30M x 0.32mm x 0.25µm



QEdit

(3) AR-1016-1 (L1)

R.T.	Response	Conc
5.25	180639959	329.17
5.44	193204167	332.32
5.73	396449826	458.13
5.79	231268363	308.08
6.19	200872885	302.65

(3) AR-1016-1 #2 (L1)

R.T.	Response	Conc
4.33	363702191	324.11
4.74	547070916	314.28
4.75	965868558	348.12
4.81	643961816	365.51
5.17	432911216	266.05

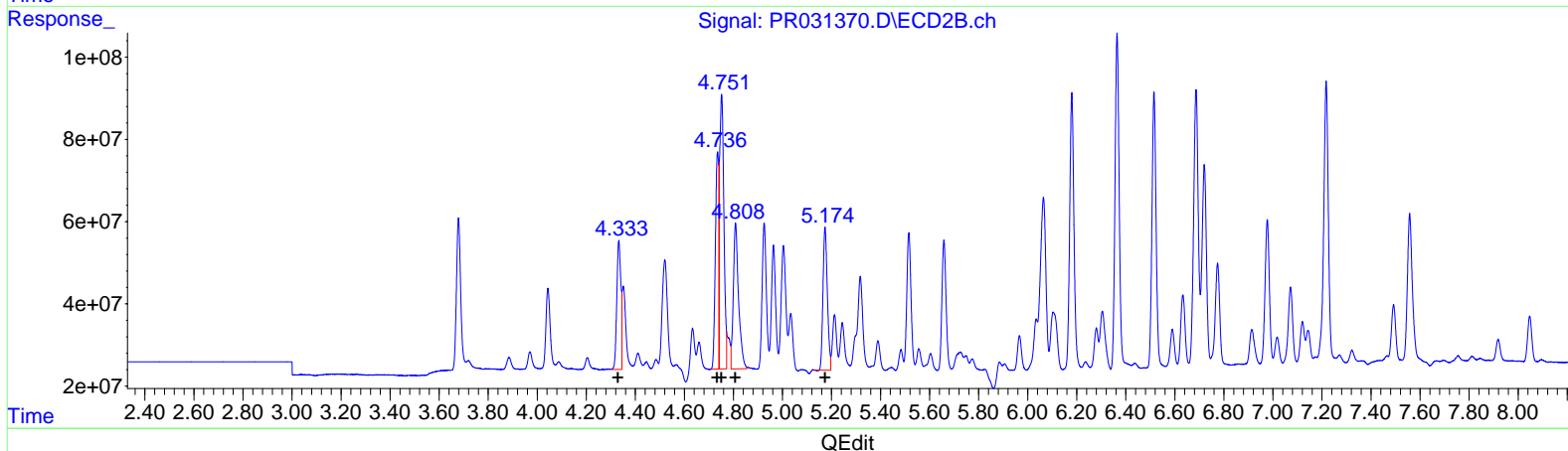
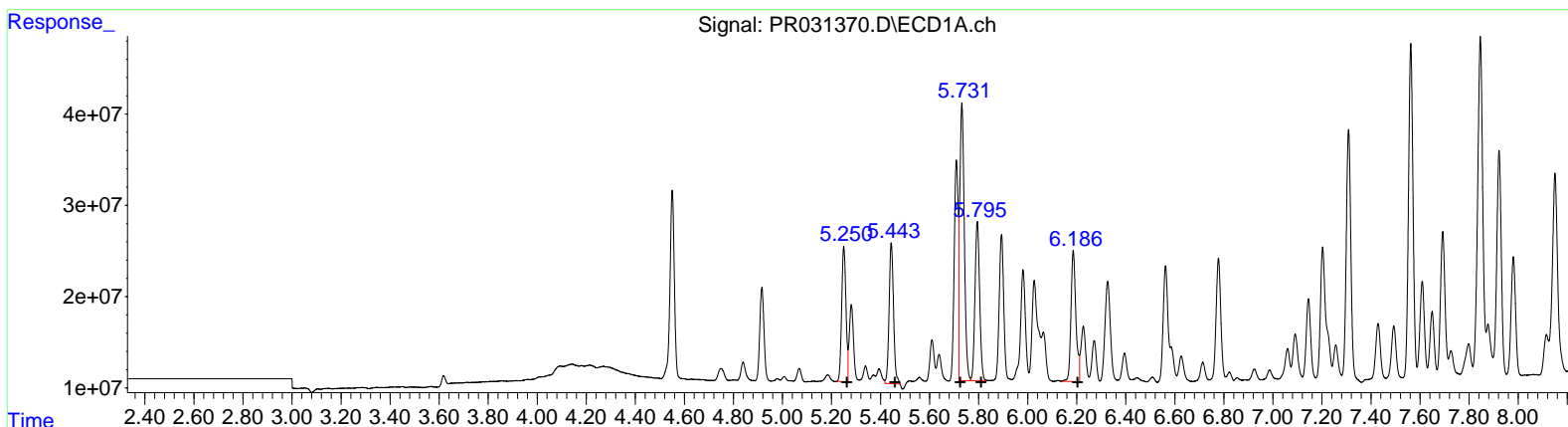
Data Path : Z:\pestpcbsrv\HPCHEM1\ECD_R\Data\PR081118\
 Data File : PR031370.D
 Signal(s) : Signal #1: ECD1A.ch Signal #2: ECD2B.ch
 Acq On : 09 Aug 2018 02:39
 Operator : SM\SJ
 Sample : J4268-10MS
 Misc :
 ALS Vial : 41 Sample Multiplier: 1

Instrument :
 ECD_R
Client Sampled :
 C0AA1MS

Manual Integrations
APPROVED
 Sohil
 8/11/2018 9:24:52 AM

Integration File signal 1: autoint1.e
 Integration File signal 2: autoint2.e
 Quant Time: Aug 11 01:23:42 2018
 Quant Method : Z:\pestpcbsrv\HPCHEM1\ECD_R\Method\PR080918CLP.M
 Quant Title : GC EXTRACTABLES
 QLast Update : Fri Aug 10 04:14:30 2018
 Response via : Initial Calibration
 Integrator: ChemStation

Volume Inj. : 1 µl
 Signal #1 Phase : ZB MR1 Signal #2 Phase: ZB MR2
 Signal #1 Info : 30Mx0.32mmx 0.5µm Signal #2 Info : 30M x 0.32mm x 0.25µm



QEdit

(3) AR-1016-1 #2 (L1)		
R.T.	Response	Conc
5.25	180639959	329.17
5.44	193204167	332.32
5.73	396449826	458.13
5.79	231268363	308.08
6.19	200872885	302.65

(3) AR-1016-1 #2 (L1)		
R.T.	Response	Conc
4.33	364047706	324.42
4.74	472170330	271.25
4.75	770335687	277.64
4.81	524453287	297.67
5.17	432911216	266.05

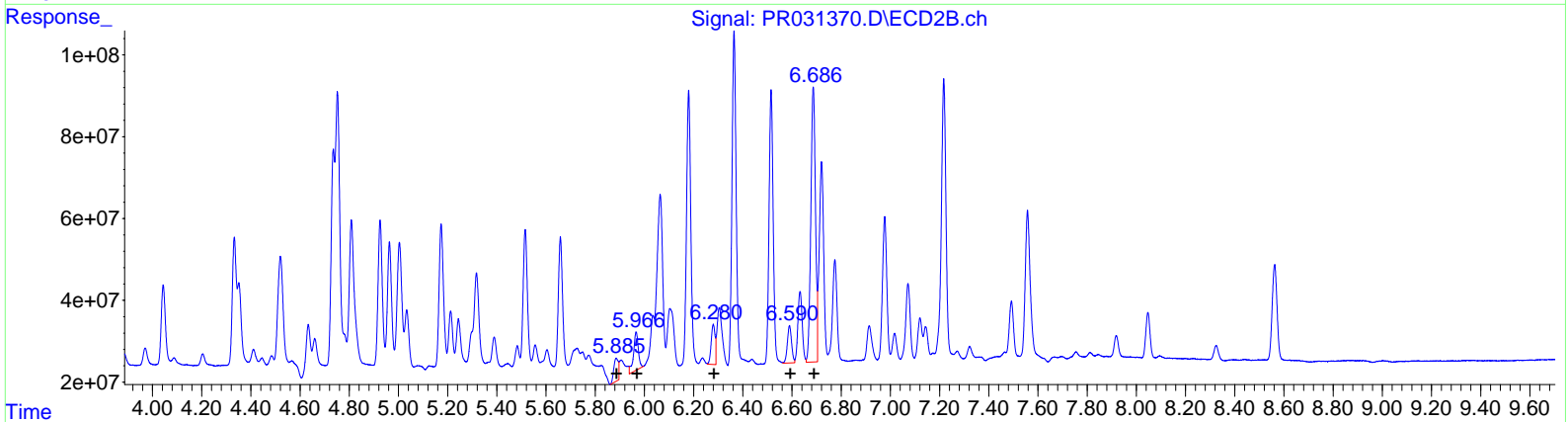
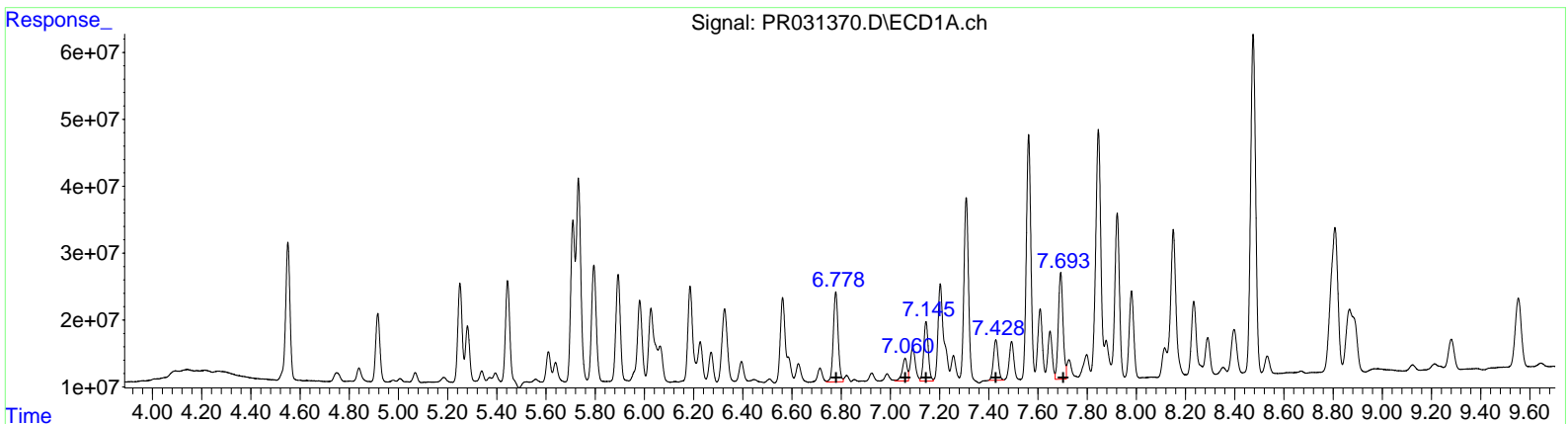
Data Path : Z:\pestpcbsrv\HPCHEM1\ECD_R\Data\PR081118\
 Data File : PR031370.D
 Signal(s) : Signal #1: ECD1A.ch Signal #2: ECD2B.ch
 Acq On : 09 Aug 2018 02:39
 Operator : SM\SJ
 Sample : J4268-10MS
 Misc :
 ALS Vial : 41 Sample Multiplier: 1

Instrument :
 ECD_R
Client Sampled :
 C0AA1MS

Manual Integrations
APPROVED
 Sohil
 8/11/2018 9:24:52 AM

Integration File signal 1: autoint1.e
 Integration File signal 2: autoint2.e
 Quant Time: Aug 11 01:23:42 2018
 Quant Method : Z:\pestpcbsrv\HPCHEM1\ECD_R\Method\PR080918CLP.M
 Quant Title : GC EXTRACTABLES
 QLast Update : Fri Aug 10 04:14:30 2018
 Response via : Initial Calibration
 Integrator: ChemStation

Volume Inj. : 1 µl
 Signal #1 Phase : ZB MR1 Signal #2 Phase: ZB MR2
 Signal #1 Info : 30Mx0.32mmx 0.5µm Signal #2 Info : 30M x 0.32mm x 0.25µm



QEdit

(26) AR-1254-1 (L6)		
R.T.	Response	Conc
6.78	182374766	92.58
7.06	46696431	38.76
7.15	115509806	54.38
7.43	79831377	44.03
7.69	210133010	163.39
(26) AR-1254-1 #2 (L6)		
R.T.	Response	Conc
5.89	72094467	56.13
5.97	127600347	51.27
6.28	108711496	26.49
6.59	108453250	53.71
6.69	878379525	246.40

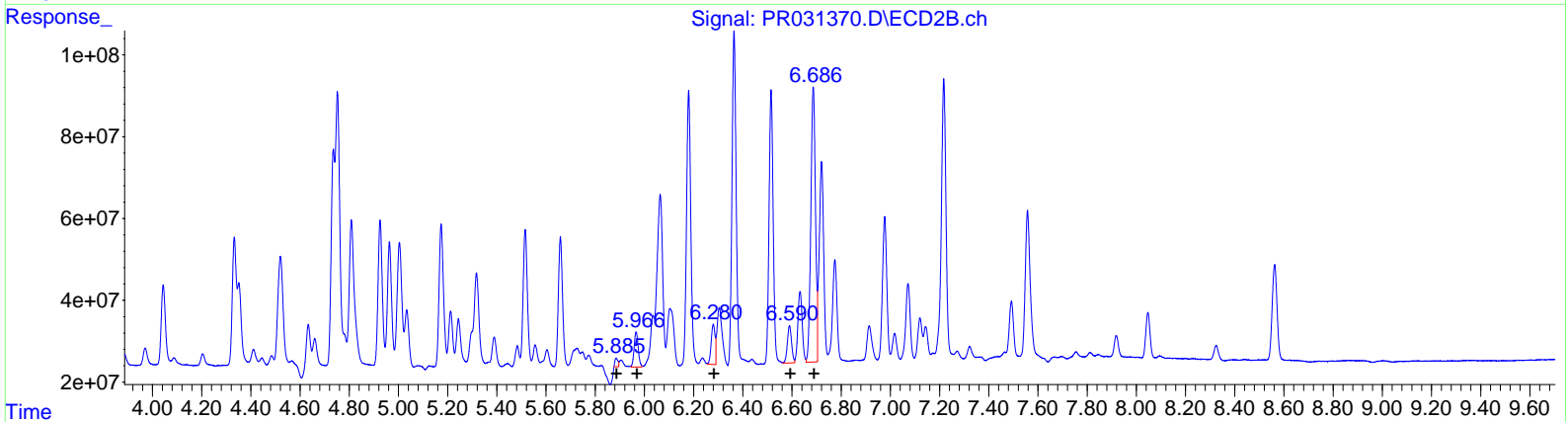
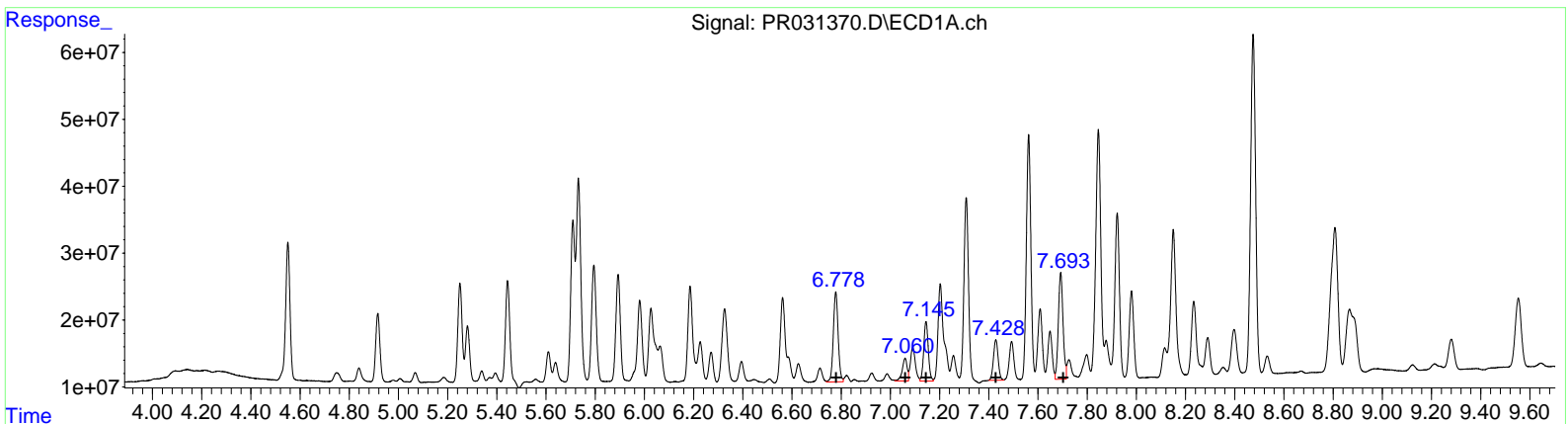
Data Path : Z:\pestpcbsrv\HPCHEM1\ECD_R\Data\PR081118\
 Data File : PR031370.D
 Signal(s) : Signal #1: ECD1A.ch Signal #2: ECD2B.ch
 Acq On : 09 Aug 2018 02:39
 Operator : SM\SJ
 Sample : J4268-10MS
 Misc :
 ALS Vial : 41 Sample Multiplier: 1

Instrument :
 ECD_R
Client Sampled :
 C0AA1MS

Manual Integrations
APPROVED
 Sohil
 8/11/2018 9:24:52 AM

Integration File signal 1: autoint1.e
 Integration File signal 2: autoint2.e
 Quant Time: Aug 11 01:23:42 2018
 Quant Method : Z:\pestpcbsrv\HPCHEM1\ECD_R\Method\PR080918CLP.M
 Quant Title : GC EXTRACTABLES
 QLast Update : Fri Aug 10 04:14:30 2018
 Response via : Initial Calibration
 Integrator: ChemStation

Volume Inj. : 1 µl
 Signal #1 Phase : ZB MR1 Signal #2 Phase: ZB MR2
 Signal #1 Info : 30Mx0.32mmx 0.5µm Signal #2 Info : 30M x 0.32mm x 0.25µm



QEdit

(26) AR-1254-1 #2 (L6)

R.T.	Response	Conc
6.78	182374766	92.58
7.06	46696431	38.76
7.15	115509806	54.38
7.43	79831377	44.03
7.69	210133010	163.39

(26) AR-1254-1 #2 (L6)

R.T.	Response	Conc
5.89	17822890	13.88
5.97	99315813	39.91
6.28	108711496	26.49
6.59	108453250	53.71
6.69	878379525	246.40

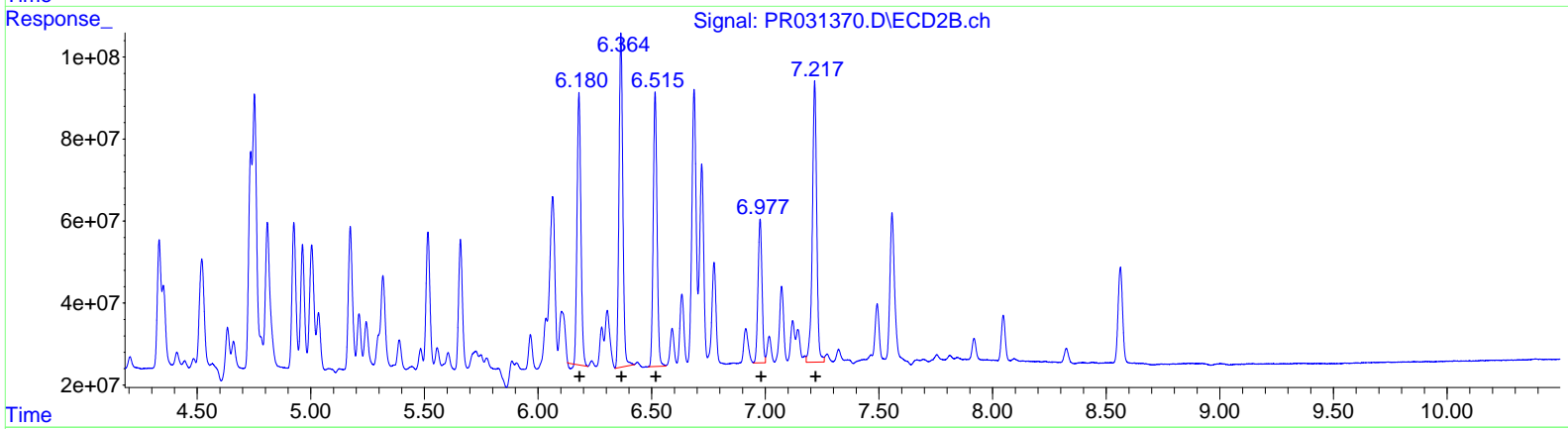
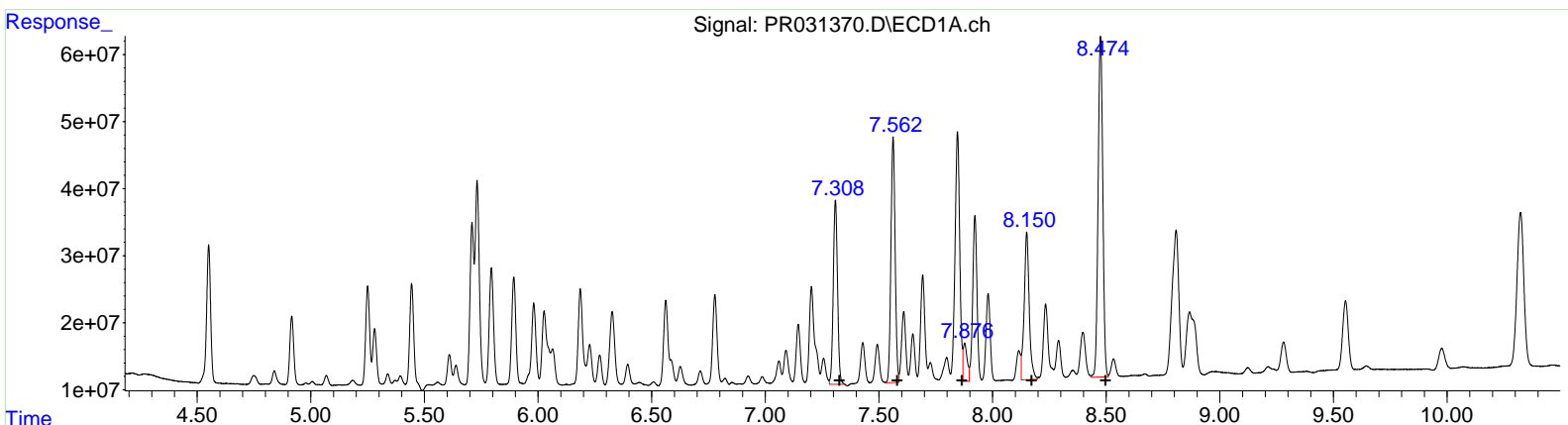
Data Path : Z:\pestpcbsrv\HPCHEM1\ECD_R\Data\PR081118\
 Data File : PR031370.D
 Signal(s) : Signal #1: ECD1A.ch Signal #2: ECD2B.ch
 Acq On : 09 Aug 2018 02:39
 Operator : SM\SJ
 Sample : J4268-10MS
 Misc :
 ALS Vial : 41 Sample Multiplier: 1

Instrument :
 ECD_R
 ClientSampled :
 C0AA1MS

Manual Integrations
APPROVED
 Sohil
 8/11/2018 9:24:52 AM

Integration File signal 1: autoint1.e
 Integration File signal 2: autoint2.e
 Quant Time: Aug 11 01:23:42 2018
 Quant Method : Z:\pestpcbsrv\HPCHEM1\ECD_R\Method\PR080918CLP.M
 Quant Title : GC EXTRACTABLES
 QLast Update : Fri Aug 10 04:14:30 2018
 Response via : Initial Calibration
 Integrator: ChemStation

Volume Inj. : 1 µl
 Signal #1 Phase : ZB MR1 Signal #2 Phase: ZB MR2
 Signal #1 Info : 30Mx0.32mmx 0.5µm Signal #2 Info : 30M x 0.32mm x 0.25µm



(31) AR-1260-1 (L7)

R.T.	Response	Conc
7.31	358318919	255.14
7.56	468346901	241.33
7.88	69026215	33.07
8.15	339298104	225.00
8.48	728019919	208.04

(31) AR-1260-1 #2 (L7)

R.T.	Response	Conc
6.18	774842777	236.03
6.36	956370645	241.00
6.52	783226115	238.54
6.98	428575986	217.86
7.22	920103040	229.70

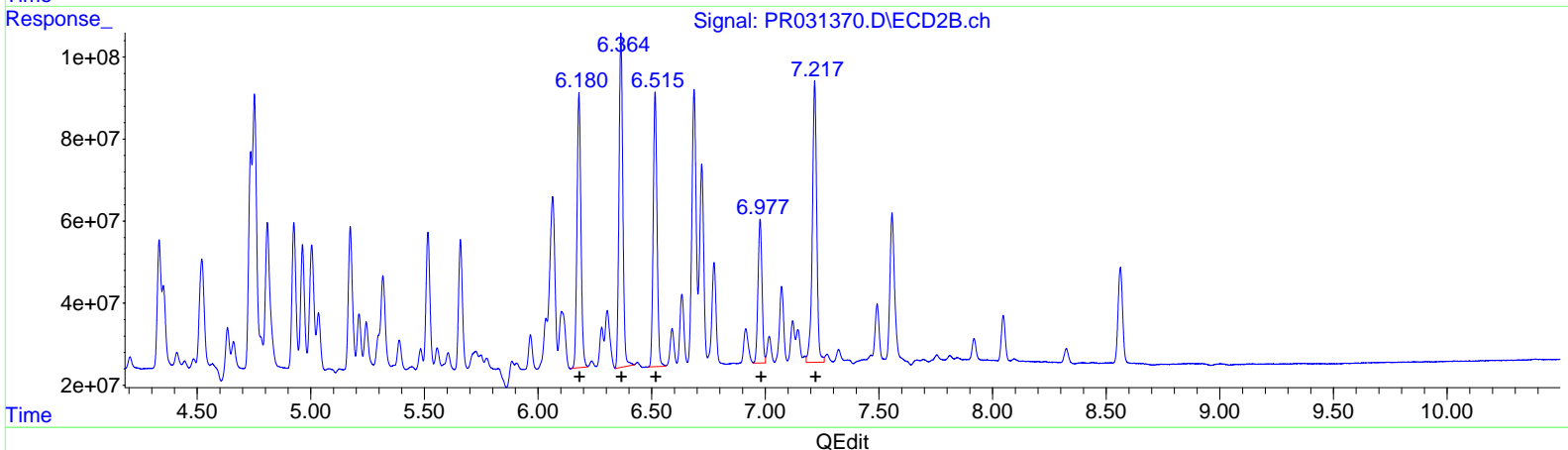
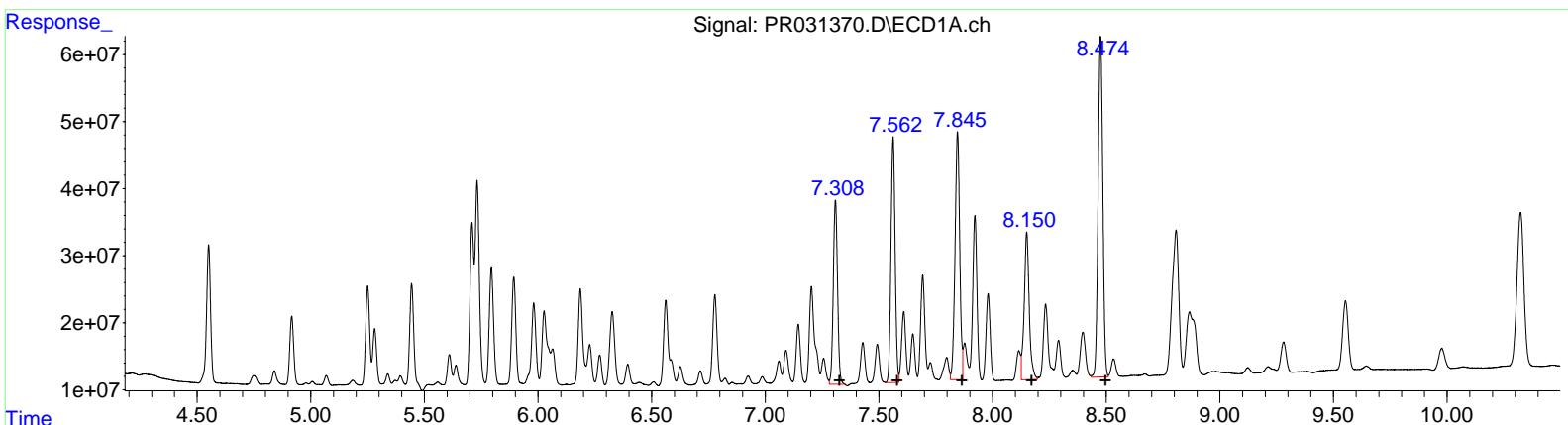
Data Path : Z:\pestpcbsrv\HPCHEM1\ECD_R\Data\PR081118\
 Data File : PR031370.D
 Signal(s) : Signal #1: ECD1A.ch Signal #2: ECD2B.ch
 Acq On : 09 Aug 2018 02:39
 Operator : SM\SJ
 Sample : J4268-10MS
 Misc :
 ALS Vial : 41 Sample Multiplier: 1

Instrument :
 ECD_R
 ClientSampled :
 C0AA1MS

Manual Integrations
APPROVED
 Sohil
 8/11/2018 9:24:52 AM

Integration File signal 1: autoint1.e
 Integration File signal 2: autoint2.e
 Quant Time: Aug 11 01:23:42 2018
 Quant Method : Z:\pestpcbsrv\HPCHEM1\ECD_R\Method\PR080918CLP.M
 Quant Title : GC EXTRACTABLES
 QLast Update : Fri Aug 10 04:14:30 2018
 Response via : Initial Calibration
 Integrator: ChemStation

Volume Inj. : 1 µl
 Signal #1 Phase : ZB MR1 Signal #2 Phase: ZB MR2
 Signal #1 Info : 30Mx0.32mmx 0.5µm Signal #2 Info : 30M x 0.32mm x 0.25µm



QEdit

(31) AR-1260-1 #2 (L7)		
R.T.	Response	Conc
7.31	358318919	255.14
7.56	468346901	241.33
7.85	532922979	255.31
8.15	339298104	225.00
8.48	728019919	208.04

(31) AR-1260-1 #2 (L7)		
R.T.	Response	Conc
6.18	807695923	246.04
6.36	956370645	241.00
6.52	783226115	238.54
6.98	428575986	217.86
7.22	920103040	229.70

Quantitation Report (QT Reviewed)

Data Path : Z:\pestpcbsrv\HPCHEM1\ECD_R\Data\PR081118\
 Data File : PR031370.D
 Signal(s) : Signal #1: ECD1A.ch Signal #2: ECD2B.ch
 Acq On : 09 Aug 2018 02:39
 Operator : SM\SJ
 Sample : J4268-10MS
 Misc :
 ALS Vial : 41 Sample Multiplier: 1

Instrument :
 ECD_R
 Client Sampled :
 C0AA1MS

Manual Integrations
 APPROVED

Sohil
 8/11/2018 9:24:52 AM

Integration File signal 1: autoint1.e
 Integration File signal 2: autoint2.e
 Quant Time: Aug 11 01:23:42 2018
 Quant Method : Z:\pestpcbsrv\HPCHEM1\ECD_R\Method\PR080918CLP.M
 Quant Title : GC EXTRACTABLES
 QLast Update : Fri Aug 10 04:14:30 2018
 Response via : Initial Calibration
 Integrator: ChemStation

Volume Inj. : 1 µl
 Signal #1 Phase : ZB MR1 Signal #2 Phase: ZB MR2
 Signal #1 Info : 30Mx0.32mmx 0.5µm Signal #2 Info : 30M x 0.32mm x 0.25µm

Compound	RT#1	RT#2	Resp#1	Resp#2	ng/ml	ng/ml
System Monitoring Compounds						
1) SA Tetrachlo...	4.551	3.679	255.6E6	440.4E6	10.970	10.870
2) SA Decachlor...	10.324	8.563	483.8E6	324.0E6	16.004	15.878
Target Compounds						
3) L1 AR-1016-1	5.250	4.333	180.6E6	364.0E6	329.172	324.418m
4) L1 AR-1016-2	5.444	4.736	193.2E6	472.2E6	332.321	271.249m
5) L1 AR-1016-3	5.732	4.751	396.4E6	770.3E6	458.128	277.643m#
6) L1 AR-1016-4	5.795	4.808	231.3E6	524.5E6	308.084	297.675m
7) L1 AR-1016-5	6.186	5.174	200.9E6	432.9E6	302.651	266.047
26) L6 AR-1254-1	6.778	5.885	182.4E6	17822890	92.582	13.876m#
27) L6 AR-1254-2	7.060	5.966	46696431	99315813	38.761	39.905m
28) L6 AR-1254-3	7.145	6.280	115.5E6	108.7E6	54.377	26.494 #
29) L6 AR-1254-4	7.429	6.590	79831377	108.5E6	44.034	53.714
30) L6 AR-1254-5	7.693	6.687	210.1E6	878.4E6	163.393	246.397 #
31) L7 AR-1260-1	7.309	6.180	358.3E6	807.7E6	255.144	246.037m
32) L7 AR-1260-2	7.562	6.365	468.3E6	956.4E6	241.327	240.995
33) L7 AR-1260-3	7.845	6.515	532.9E6	783.2E6	255.311m	238.537
34) L7 AR-1260-4	8.150	6.977	339.3E6	428.6E6	225.003	217.862
35) L7 AR-1260-5	8.475	7.217	728.0E6	920.1E6	208.044	229.699

S.M
 08-10-18
 S.M
 08-10-18
 S.M
 08-10-18

(f)=RT Delta > 1/2 Window (#)=Amounts differ by > 25% (m)=manual int.