

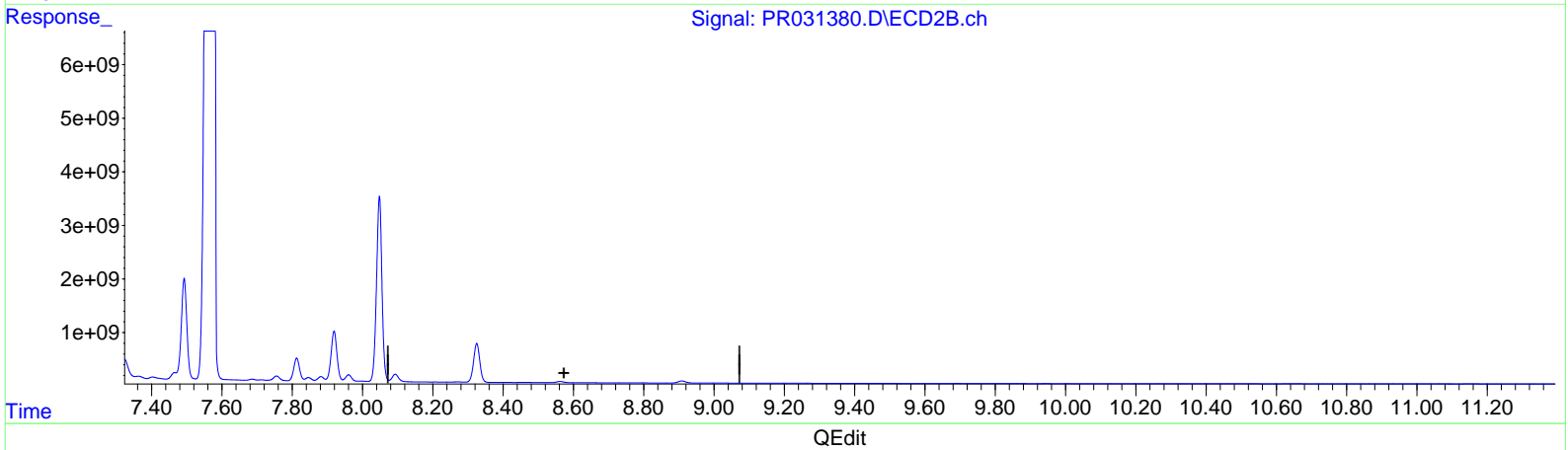
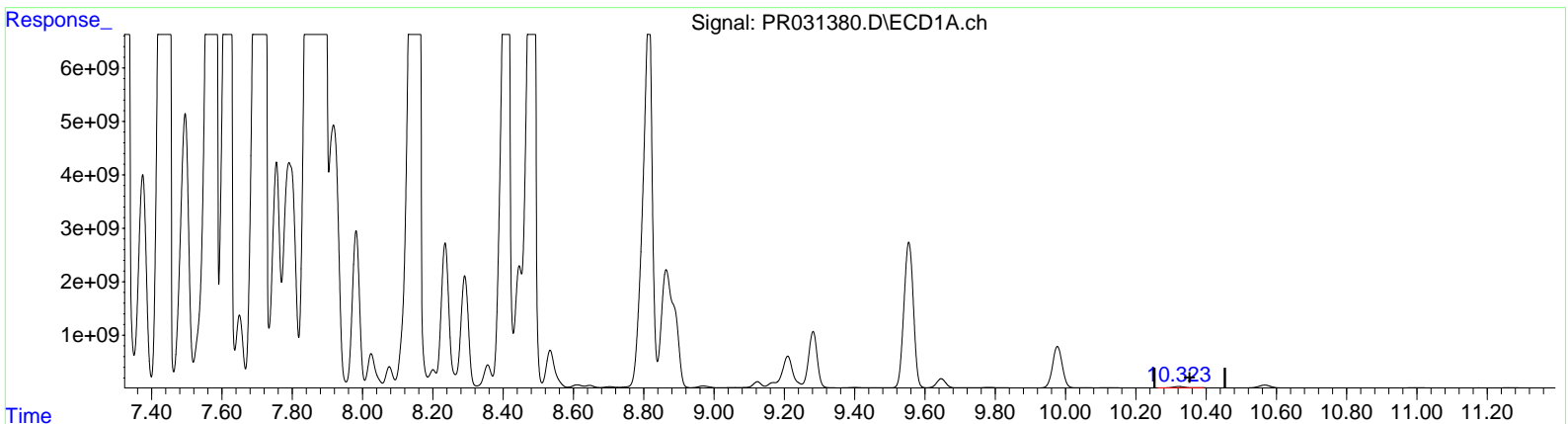
Data Path : Z:\pestpcbsrv\HPCHEM1\ECD\_R\Data\PR081118\  
 Data File : PR031380.D  
 Signal(s) : Signal #1: ECD1A.ch Signal #2: ECD2B.ch  
 Acq On : 09 Aug 2018 05:03  
 Operator : SM\SJ  
 Sample : J4301-16DL 500X  
 Misc :  
 ALS Vial : 141 Sample Multiplier: 1

Instrument :  
 ECD\_R  
 ClientSampled :  
 C0AF5DL

Manual Integrations  
**APPROVED**  
 Sohil  
 8/9/2018 1:43:53 PM

Integration File signal 1: autoint1.e  
 Integration File signal 2: autoint2.e  
 Quant Time: Aug 09 05:47:55 2018  
 Quant Method : Z:\pestpcbsrv\HPCHEM1\ECD\_R\Method\PR080918CLP.M  
 Quant Title : GC EXTRACTABLES  
 QLast Update : Wed Aug 08 06:03:09 2018  
 Response via : Initial Calibration  
 Integrator: ChemStation

Volume Inj. : 1 µl  
 Signal #1 Phase : ZB MR1 Signal #2 Phase: ZB MR2  
 Signal #1 Info : 30Mx0.32mmx 0.5µm Signal #2 Info : 30M x 0.32mm x 0.25µm



(2) Decachlorobiphenyl (SA)  
 10.323min 18.316 ng/ml  
 response 553725930

(2) Decachlorobiphenyl #2 (SA)  
 0.000min 0.000 ng/ml  
 response 0

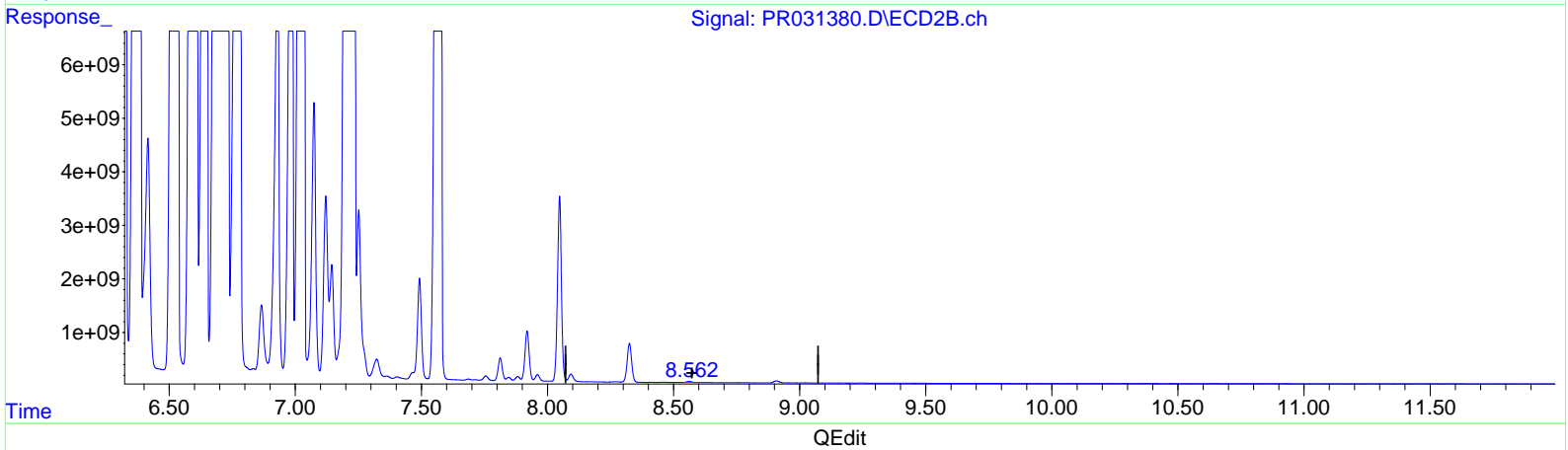
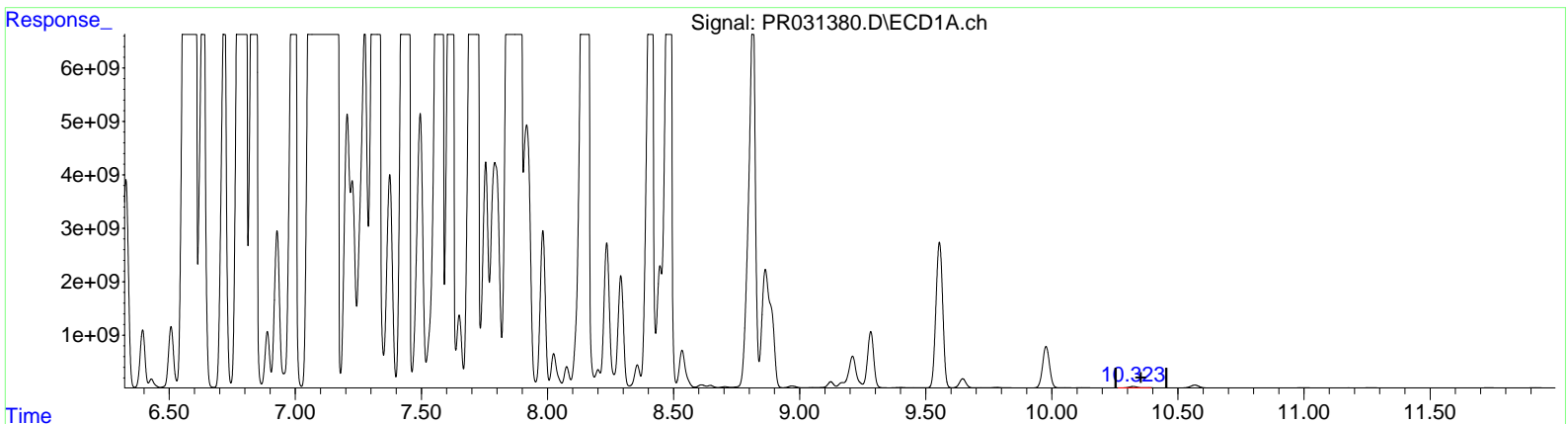
Data Path : Z:\pestpcbsrv\HPCHEM1\ECD\_R\Data\PR081118\  
 Data File : PR031380.D  
 Signal(s) : Signal #1: ECD1A.ch Signal #2: ECD2B.ch  
 Acq On : 09 Aug 2018 05:03  
 Operator : SM\SJ  
 Sample : J4301-16DL 500X  
 Misc :  
 ALS Vial : 141 Sample Multiplier: 1

**Instrument :**  
 ECD\_R  
**ClientSampled :**  
 C0AF5DL

**Manual Integrations**  
**APPROVED**  
 Sohil  
 8/9/2018 1:43:53 PM

Integration File signal 1: autoint1.e  
 Integration File signal 2: autoint2.e  
 Quant Time: Aug 09 05:47:55 2018  
 Quant Method : Z:\pestpcbsrv\HPCHEM1\ECD\_R\Method\PR080918CLP.M  
 Quant Title : GC EXTRACTABLES  
 QLast Update : Wed Aug 08 06:03:09 2018  
 Response via : Initial Calibration  
 Integrator: ChemStation

Volume Inj. : 1 µl  
 Signal #1 Phase : ZB MR1 Signal #2 Phase: ZB MR2  
 Signal #1 Info : 30Mx0.32mmx 0.5µm Signal #2 Info : 30M x 0.32mm x 0.25µm



(2) Decachlorobiphenyl (SA)  
 10.323min 18.316 ng/ml  
 response 553725930

(2) Decachlorobiphenyl #2 (SA)  
 8.562min 15.363 ng/ml m  
 response 313483849

Data Path : Z:\pestpcbsrv\HPCHEM1\ECD\_R\Data\PR081118\  
 Data File : PR031380.D  
 Signal(s) : Signal #1: ECD1A.ch Signal #2: ECD2B.ch  
 Acq On : 09 Aug 2018 05:03  
 Operator : SM\SJ  
 Sample : J4301-16DL 500X  
 Misc :  
 ALS Vial : 141 Sample Multiplier: 1

**Instrument :**  
 ECD\_R  
**Client Sampled :**  
 C0AF5DL

Integration File signal 1: autoint1.e  
 Integration File signal 2: autoint2.e  
 Quant Time: Aug 09 05:47:55 2018  
 Quant Method : Z:\pestpcbsrv\HPCHEM1\ECD\_R\Method\PR080918CLP.M  
 Quant Title : GC EXTRACTABLES  
 QLast Update : Wed Aug 08 06:03:09 2018  
 Response via : Initial Calibration  
 Integrator: ChemStation

**Manual Integrations**  
**APPROVED**

Sohil  
 8/9/2018 1:43:53 PM

Volume Inj. : 1 µl  
 Signal #1 Phase : ZB MR1 Signal #2 Phase: ZB MR2  
 Signal #1 Info : 30Mx0.32mmx 0.5µm Signal #2 Info : 30M x 0.32mm x 0.25µm

Compound	RT#1	RT#2	Resp#1	Resp#2	ng/ml	ng/ml
-----						
System Monitoring Compounds						
1) SA Tetrachlo...	4.527f	3.680	75310720	2721208	3.232	0.067 #
2) SA Decachlor...	10.323	8.562	553.7E6	313.5E6	18.316	15.363m) SM 08/10/18

Target Compounds

(f)=RT Delta > 1/2 Window (#)=Amounts differ by > 25% (m)=manual int.