

Data Path : Z:\pestpcbsrv\HPCHEM1\ECD_R\Data\PR081123\
 Data File : PR062589.D
 Signal(s) : Signal #1: ECD1A.ch Signal #2: ECD2B.ch
 Acq On : 10 Aug 2023 09:52
 Operator : YP\AJ
 Sample : 03572-03
 Misc : AR1221 MDL 25 PPB
 ALS Vial : 5 Sample Multiplier: 1

Instrument :
 ECD_R
 ClientSampleId :

Integration File signal 1: autoint1.e
 Integration File signal 2: autoint2.e
 Quant Time: Aug 10 16:45:32 2023
 Quant Method : Z:\pestpcbsrv\HPCHEM1\ECD_R\Method\PR080923.M
 Quant Title : GC EXTRACTABLES
 QLast Update : Wed Aug 09 01:27:38 2023
 Response via : Initial Calibration
 Integrator: ChemStation

Volume Inj. : 2 µl
 Signal #1 Phase : ZB-MR1 Signal #2 Phase: ZB-MR2
 Signal #1 Info : 30Mx0.32mmx 0.50µ Signal #2 Info : 30M x 0.32mm x 0.25µm

Compound	RT#1	RT#2	Resp#1	Resp#2	ng/ml	ng/ml

System Monitoring Compounds						
1) SA Tetrachlo...	3.684	2.955	35004750	56396871	17.338	19.427
2) SA Decachlor...	9.619	8.236	32903325	83626511	22.091	20.154
Target Compounds						
3) L1 AR-1016-1	4.911	4.077	390628	436891	5.817	4.027 #
4) L1 AR-1016-2	4.934	4.096	409083	626367	4.236	4.102
5) L1 AR-1016-3	5.000	4.278	388892	365937	6.312	4.367 #
6) L1 AR-1016-4	5.106	4.324	139372	582003	2.860	8.577 #
7) L1 AR-1016-5	5.427	4.545	438508	378567	8.404	4.161 #
8) L2 AR-1221-1	3.908	3.181	749966	1140174	30.660	30.137
9) L2 AR-1221-2	3.997	3.263	812635	2057605	52.453	56.985
10) L2 AR-1221-3	4.075	3.345	1522807	4563010	25.369	50.729 #
11) L3 AR-1232-1	4.075	3.345	1522807	4563010	30.661	60.927 #
12) L3 AR-1232-2	4.628	4.096	269047	626367	10.895	9.082
13) L3 AR-1232-3	4.934	4.278	409083	365937	9.577	9.861
14) L3 AR-1232-4	5.106	4.370	139372	471942	6.593	13.938 #
15) L3 AR-1232-5	5.200	4.545	175941	378567	10.117	9.634
16) L4 AR-1242-1	4.911	4.077	390628	436891	7.008	4.856 #
17) L4 AR-1242-2	4.934	4.096	409083	626367	5.096	4.996
18) L4 AR-1242-3	5.000	4.278	388892	365937	7.551	5.289 #
19) L4 AR-1242-4	5.106	4.370	139372	471942	3.449	6.882 #
20) L4 AR-1242-5	5.892	4.916	314644	1052709	7.344	11.758 #
21) L5 AR-1248-1	4.911	4.077	390628	436891	9.510	6.529 #
22) L5 AR-1248-2	5.200	4.324	175941	582003	2.905	6.073 #
23) L5 AR-1248-3	5.427	4.370	438508	471942	6.253	4.780
24) L5 AR-1248-4	5.857	4.545	173067	378567	2.393	3.191 #
25) L5 AR-1248-5	5.892	4.960	314644	2117558	4.442	17.720 #
26) L6 AR-1254-1	5.828	4.916	329510	1052709	4.123	5.877 #
27) L6 AR-1254-2	6.064	5.069	354828	1305866	2.973	8.350 #
28) L6 AR-1254-3	6.450	5.500	401056	471032	3.388	1.814 #
29) L6 AR-1254-4	6.777	5.754	125671	278587	1.510	1.663
30) L6 AR-1254-5	7.218	6.197	852271	608043	9.481	2.445 #
31) L7 AR-1260-1	0.000	5.633	0	416951	N.D.	2.143 #
32) L7 AR-1260-2	6.904f	5.849	261726	137524	2.386	0.578 #
33) L7 AR-1260-3	7.303	6.018	1118316	295511	13.717	1.310 #
34) L7 AR-1260-4	7.531f	0.000	984276	0	10.944	N.D. #
35) L7 AR-1260-5	7.891	0.000	288335	0	1.779	N.D. #
36) L8 AR-1262-1	7.303	6.243	1118316	529637	9.742	2.034 #
37) L8 AR-1262-2	7.891	0.000	288335	0	1.596	N.D. #
38) L8 AR-1262-3	0.000	7.086	0	897707	N.D.	4.518 #
39) L8 AR-1262-4	8.306f	0.000	215866	0	2.139	N.D. #
40) L8 AR-1262-5	0.000	7.698	0	107233	N.D.	0.605 #
41) L9 AR-1268-1	0.000	7.086	0	897707	N.D.	1.542 #

Data Path : Z:\pestpcbsrv\HPCHEM1\ECD_R\Data\PR081123\
 Data File : PR062589.D
 Signal(s) : Signal #1: ECD1A.ch Signal #2: ECD2B.ch
 Acq On : 10 Aug 2023 09:52
 Operator : YP\AJ
 Sample : 03572-03
 Misc : AR1221 MDL 25 PPB
 ALS Vial : 5 Sample Multiplier: 1

Instrument :
 ECD_R
 ClientSampleId :

Integration File signal 1: autoint1.e
 Integration File signal 2: autoint2.e
 Quant Time: Aug 10 16:45:32 2023
 Quant Method : Z:\pestpcbsrv\HPCHEM1\ECD_R\Method\PR080923.M
 Quant Title : GC EXTRACTABLES
 QLast Update : Wed Aug 09 01:27:38 2023
 Response via : Initial Calibration
 Integrator: ChemStation

Volume Inj. : 2 µl
 Signal #1 Phase : ZB-MR1 Signal #2 Phase: ZB-MR2
 Signal #1 Info : 30Mx0.32mmx 0.50µ Signal #2 Info : 30M x 0.32mm x 0.25µm

	Compound	RT#1	RT#2	Resp#1	Resp#2	ng/ml	ng/ml
42)	L9 AR-1268-2	8.306f	0.000	215866	0	1.066	N.D. #
43)	L9 AR-1268-3	0.000	7.376	0	430571	N.D.	0.913 #
44)	L9 AR-1268-4	0.000	7.698	0	107233	N.D.	0.543 #
45)	L9 AR-1268-5	9.305	7.990	377468	1311684	0.743	0.876

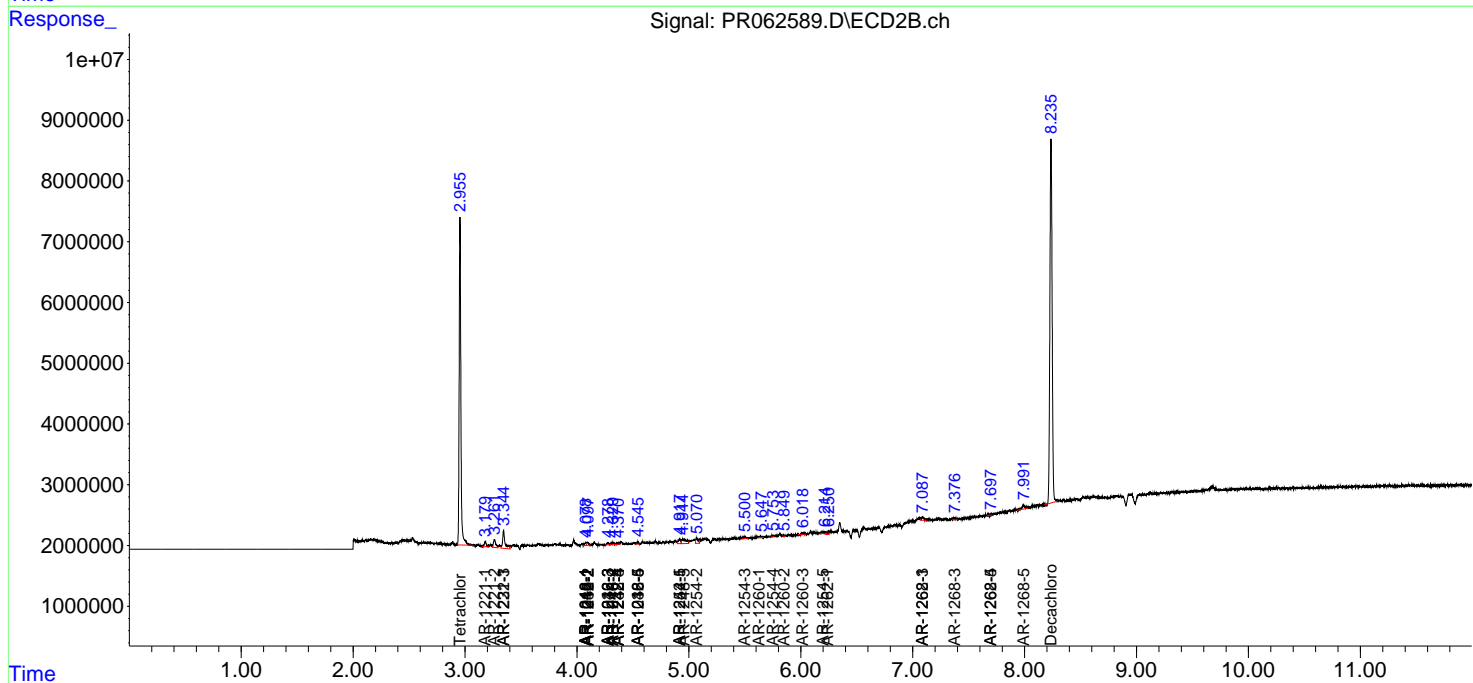
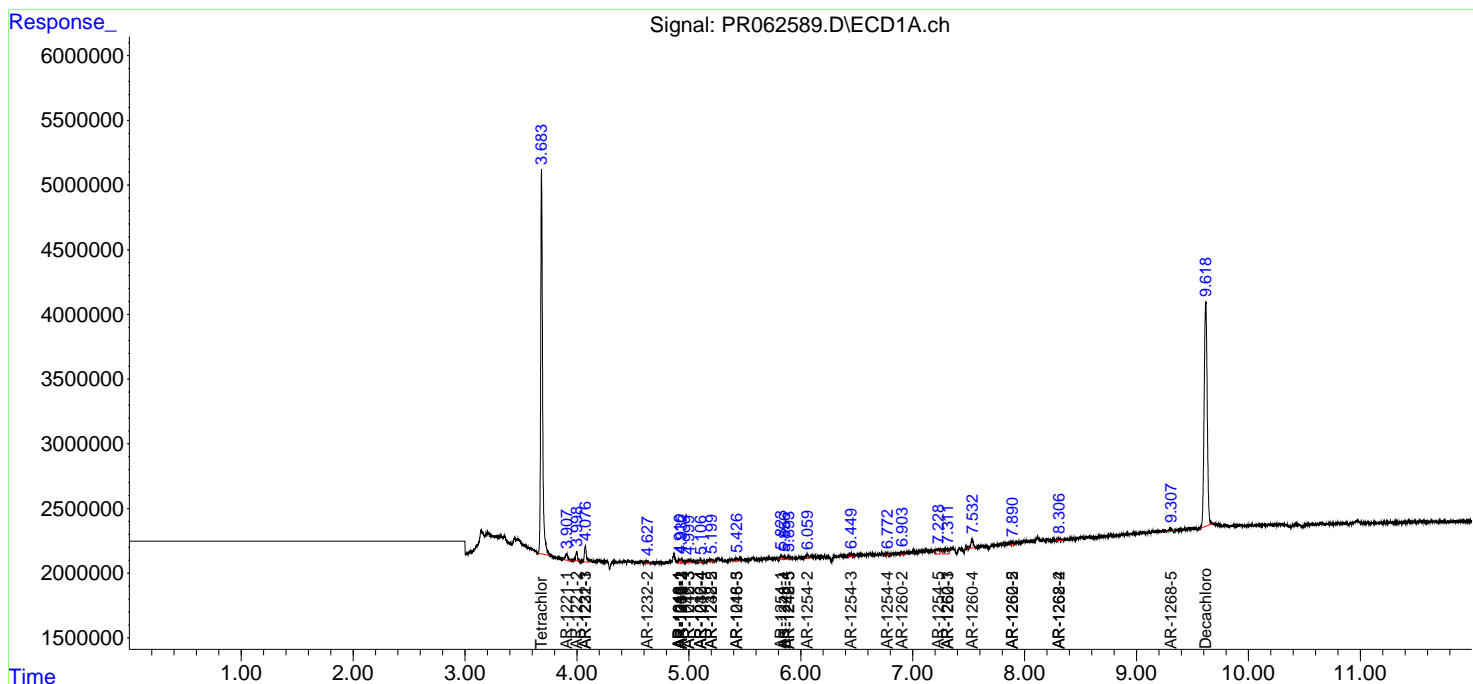
(f)=RT Delta > 1/2 Window (#)=Amounts differ by > 25% (m)=manual int.

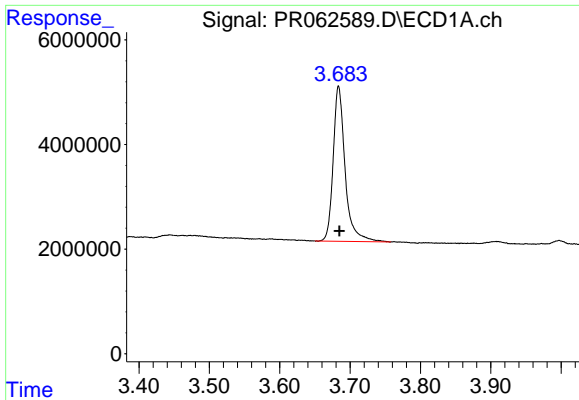
Data Path : Z:\pestpcbsrv\HPCHEM1\ECD_R\Data\PR081123\
 Data File : PR062589.D
 Signal(s) : Signal #1: ECD1A.ch Signal #2: ECD2B.ch
 Acq On : 10 Aug 2023 09:52
 Operator : YP\AJ
 Sample : 03572-03
 Misc : AR1221 MDL 25 PPB
 ALS Vial : 5 Sample Multiplier: 1

Instrument :
 ECD_R
 ClientSampleId :

Integration File signal 1: autoint1.e
 Integration File signal 2: autoint2.e
 Quant Time: Aug 10 16:45:32 2023
 Quant Method : Z:\pestpcbsrv\HPCHEM1\ECD_R\Method\PR080923.M
 Quant Title : GC EXTRACTABLES
 QLast Update : Wed Aug 09 01:27:38 2023
 Response via : Initial Calibration
 Integrator: ChemStation

Volume Inj. : 2 µl
 Signal #1 Phase : ZB-MR1 Signal #2 Phase: ZB-MR2
 Signal #1 Info : 30Mx0.32mmx 0.50µ Signal #2 Info : 30M x 0.32mm x 0.25µm

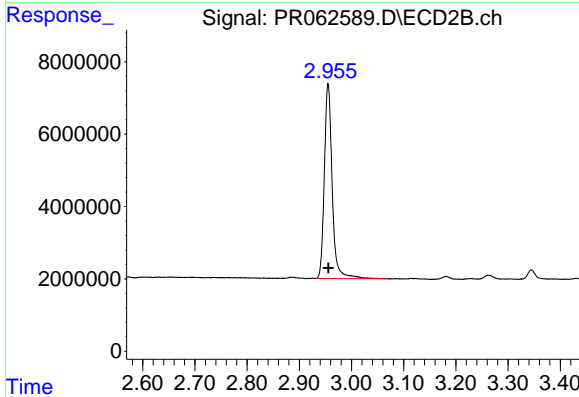




#1 Tetrachloro-m-xylene

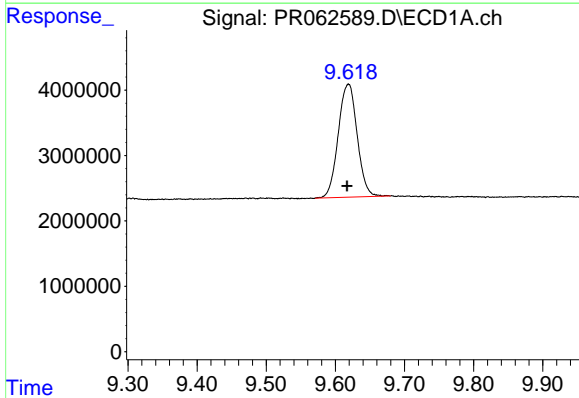
R.T.: 3.684 min
 Delta R.T.: -0.001 min
 Response: 35004750
 Conc: 17.34 ng/ml

Instrument :
 ECD_R
 ClientSampleId :



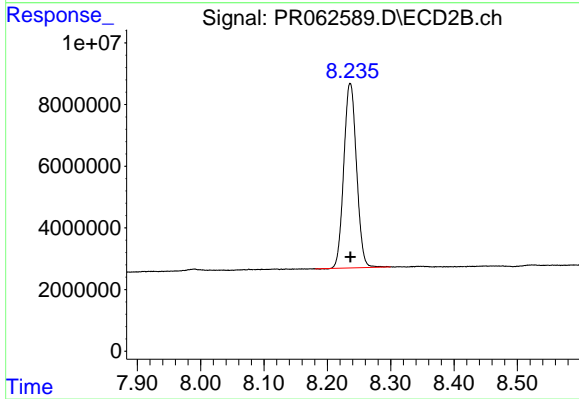
#1 Tetrachloro-m-xylene

R.T.: 2.955 min
 Delta R.T.: 0.000 min
 Response: 56396871
 Conc: 19.43 ng/ml



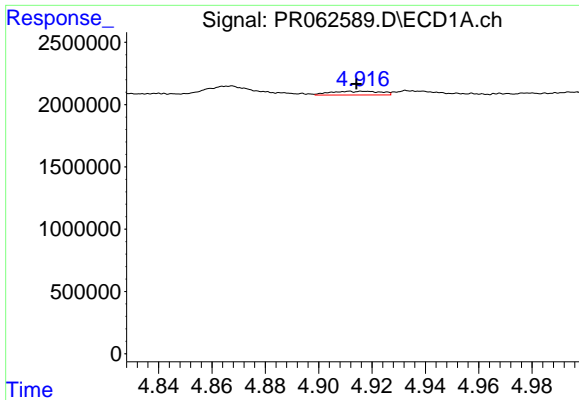
#2 Decachlorobiphenyl

R.T.: 9.619 min
 Delta R.T.: 0.002 min
 Response: 32903325
 Conc: 22.09 ng/ml



#2 Decachlorobiphenyl

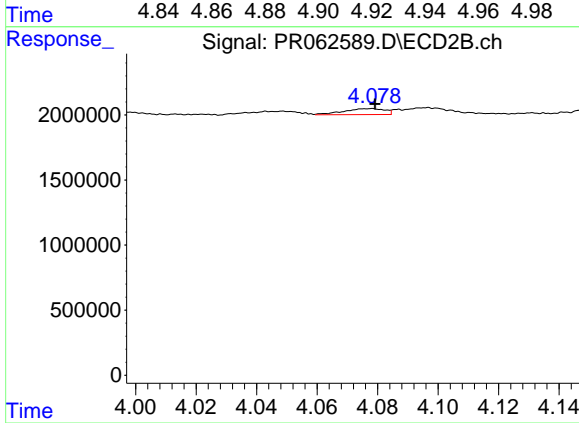
R.T.: 8.236 min
 Delta R.T.: 0.000 min
 Response: 83626511
 Conc: 20.15 ng/ml



#3 AR-1016-1

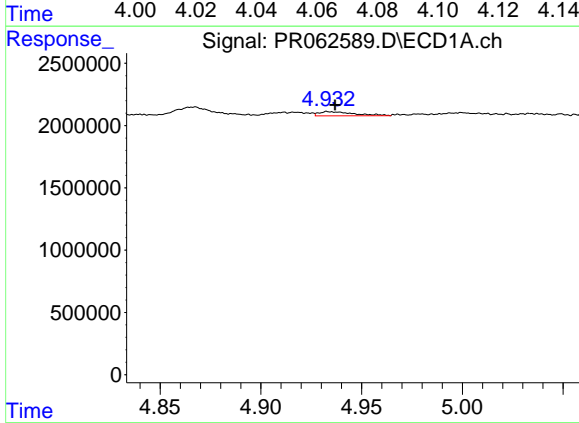
R.T.: 4.911 min
 Delta R.T.: -0.003 min
 Response: 390628
 Conc: 5.82 ng/ml

Instrument :
 ECD_R
 ClientSampleId :



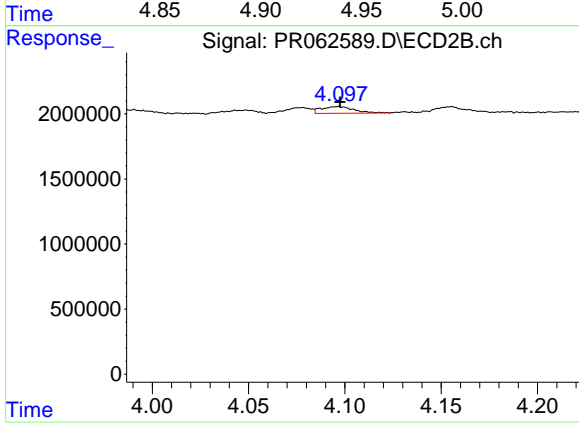
#3 AR-1016-1

R.T.: 4.077 min
 Delta R.T.: -0.002 min
 Response: 436891
 Conc: 4.03 ng/ml



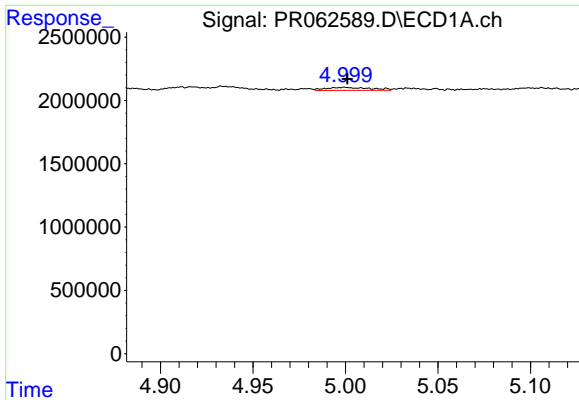
#4 AR-1016-2

R.T.: 4.934 min
 Delta R.T.: -0.003 min
 Response: 409083
 Conc: 4.24 ng/ml



#4 AR-1016-2

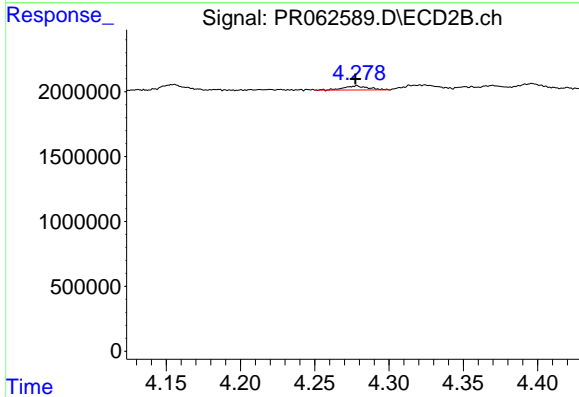
R.T.: 4.096 min
 Delta R.T.: -0.001 min
 Response: 626367
 Conc: 4.10 ng/ml



#5 AR-1016-3

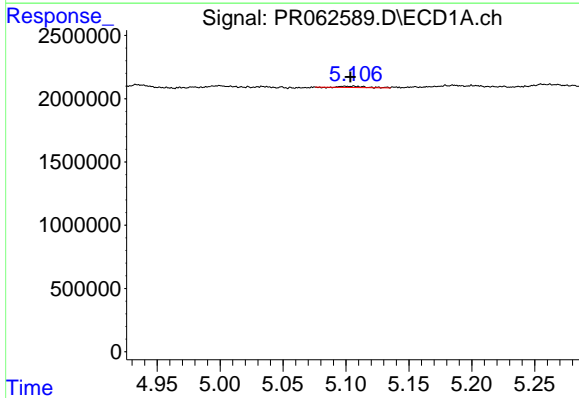
R.T.: 5.000 min
 Delta R.T.: -0.001 min
 Response: 388892
 Conc: 6.31 ng/ml

Instrument :
 ECD_R
 ClientSampleId :



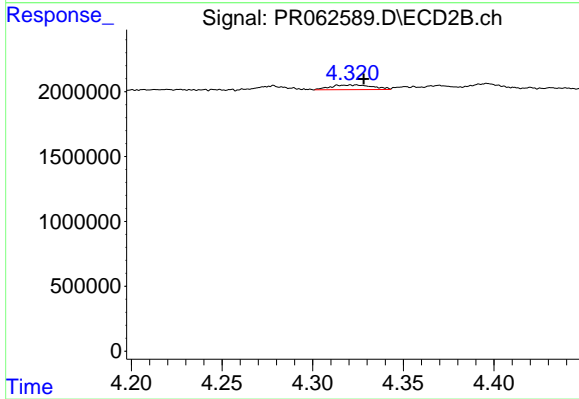
#5 AR-1016-3

R.T.: 4.278 min
 Delta R.T.: 0.000 min
 Response: 365937
 Conc: 4.37 ng/ml



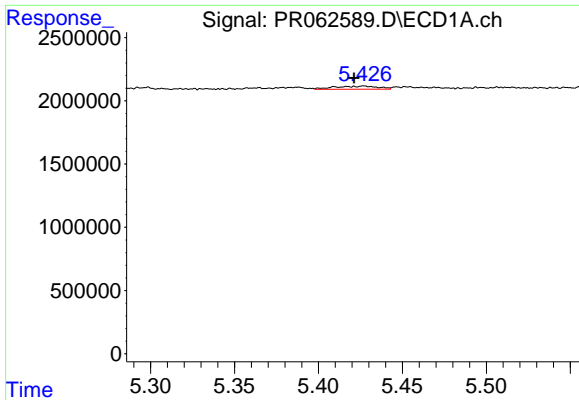
#6 AR-1016-4

R.T.: 5.106 min
 Delta R.T.: 0.003 min
 Response: 139372
 Conc: 2.86 ng/ml



#6 AR-1016-4

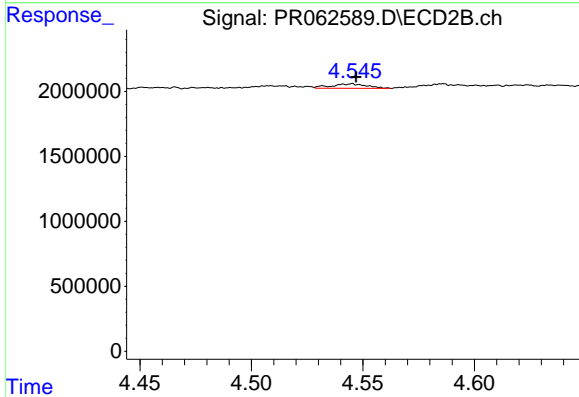
R.T.: 4.324 min
 Delta R.T.: -0.005 min
 Response: 582003
 Conc: 8.58 ng/ml



#7 AR-1016-5

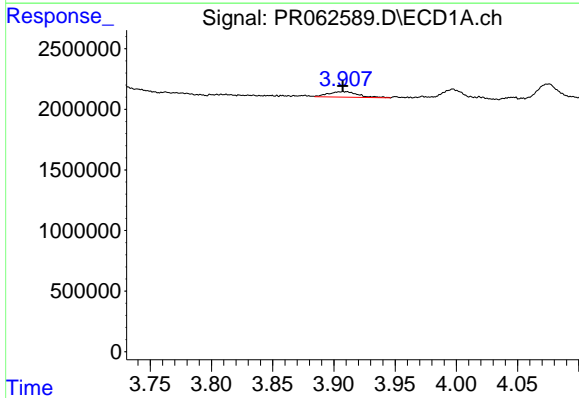
R.T.: 5.427 min
 Delta R.T.: 0.006 min
 Response: 438508
 Conc: 8.40 ng/ml

Instrument :
 ECD_R
 ClientSampleId :



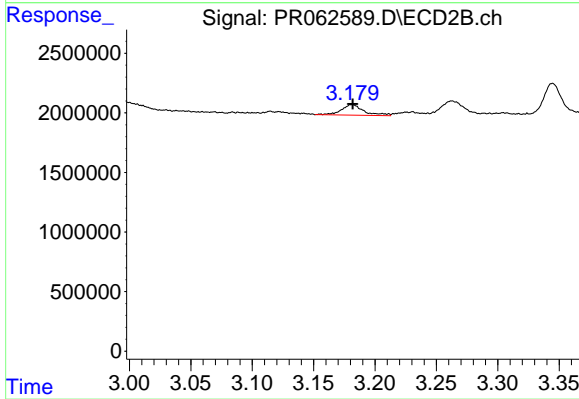
#7 AR-1016-5

R.T.: 4.545 min
 Delta R.T.: -0.002 min
 Response: 378567
 Conc: 4.16 ng/ml



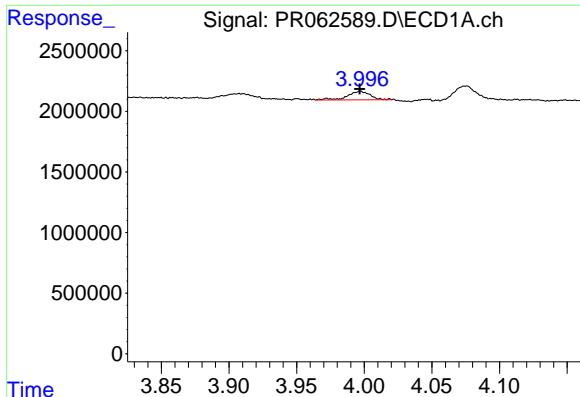
#8 AR-1221-1

R.T.: 3.908 min
 Delta R.T.: 0.000 min
 Response: 749966
 Conc: 30.66 ng/ml



#8 AR-1221-1

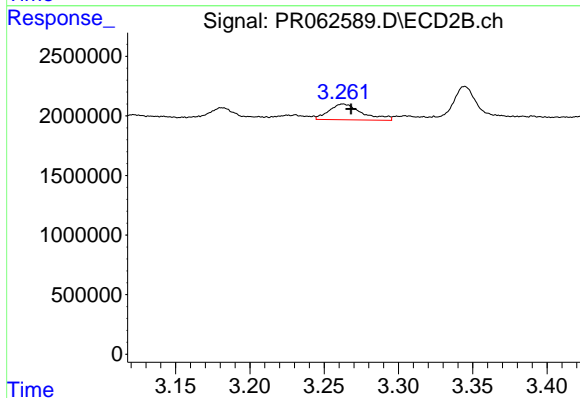
R.T.: 3.181 min
 Delta R.T.: 0.000 min
 Response: 1140174
 Conc: 30.14 ng/ml



#9 AR-1221-2

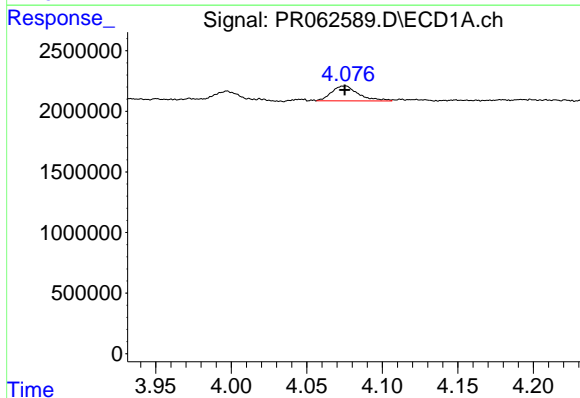
R.T.: 3.997 min
 Delta R.T.: 0.000 min
 Response: 812635
 Conc: 52.45 ng/ml

Instrument :
 ECD_R
 ClientSampleId :



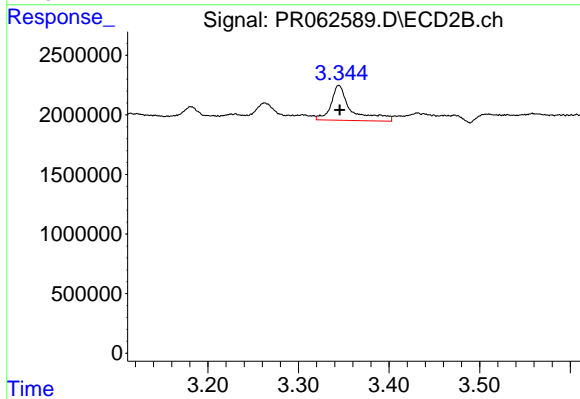
#9 AR-1221-2

R.T.: 3.263 min
 Delta R.T.: -0.006 min
 Response: 2057605
 Conc: 56.99 ng/ml



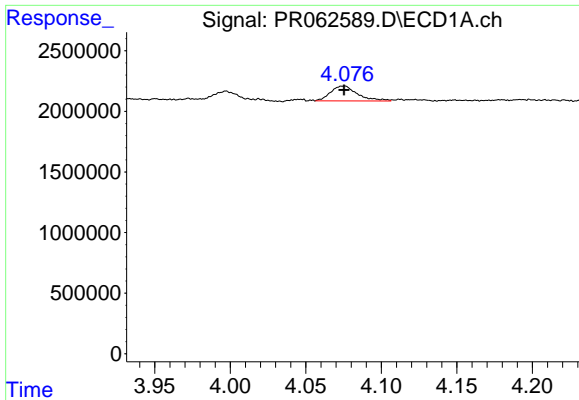
#10 AR-1221-3

R.T.: 4.075 min
 Delta R.T.: 0.000 min
 Response: 1522807
 Conc: 25.37 ng/ml



#10 AR-1221-3

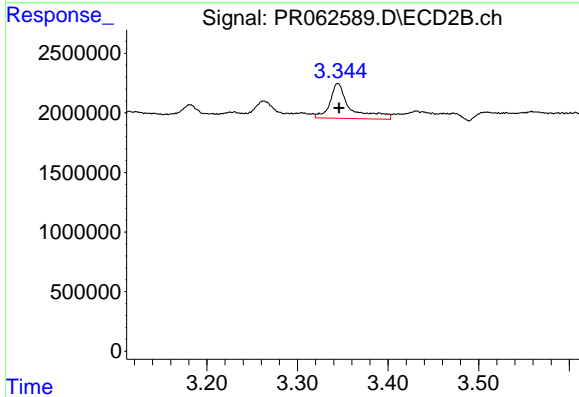
R.T.: 3.345 min
 Delta R.T.: 0.000 min
 Response: 4563010
 Conc: 50.73 ng/ml



#11 AR-1232-1

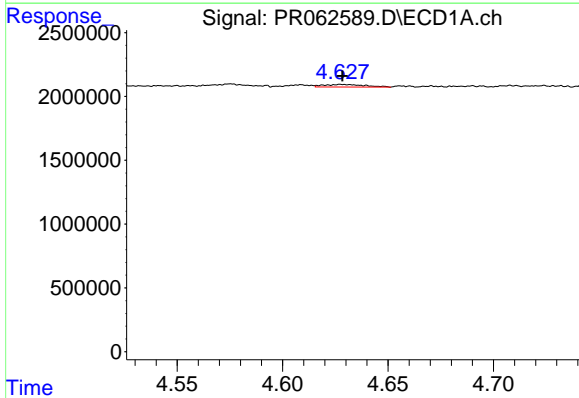
R.T.: 4.075 min
 Delta R.T.: 0.000 min
 Response: 1522807
 Conc: 30.66 ng/ml

Instrument :
 ECD_R
 ClientSampleId :



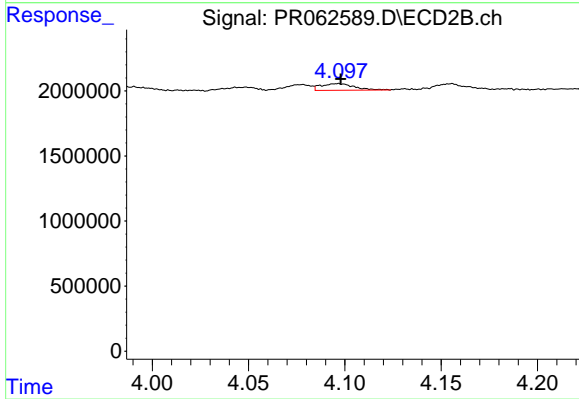
#11 AR-1232-1

R.T.: 3.345 min
 Delta R.T.: -0.001 min
 Response: 4563010
 Conc: 60.93 ng/ml



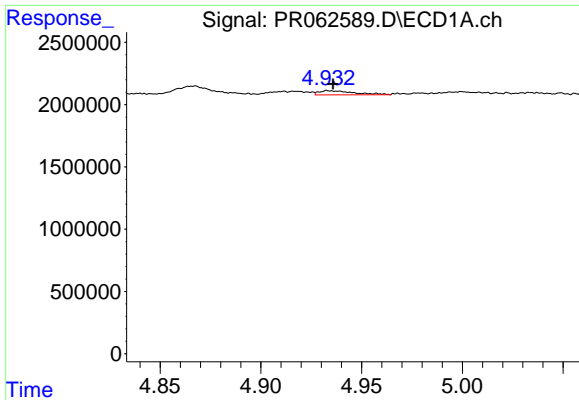
#12 AR-1232-2

R.T.: 4.628 min
 Delta R.T.: 0.000 min
 Response: 269047
 Conc: 10.89 ng/ml



#12 AR-1232-2

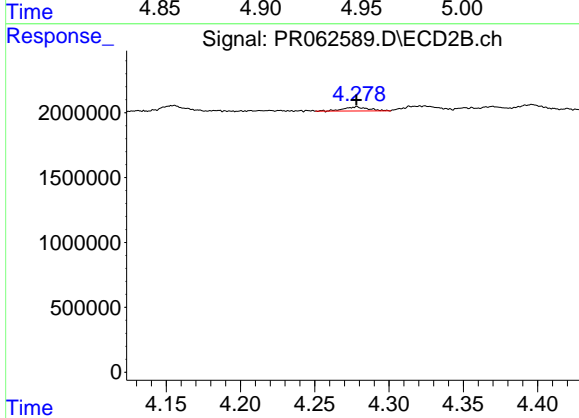
R.T.: 4.096 min
 Delta R.T.: -0.002 min
 Response: 626367
 Conc: 9.08 ng/ml



#13 AR-1232-3

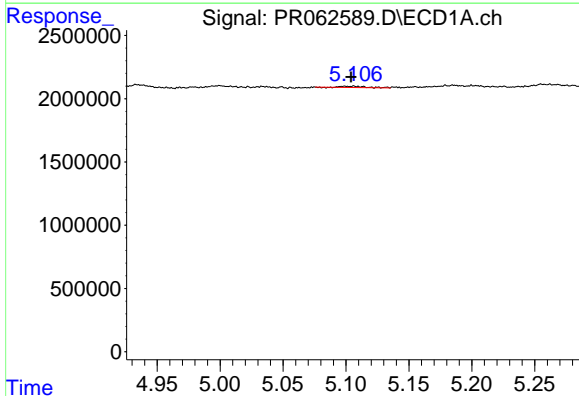
R.T.: 4.934 min
 Delta R.T.: -0.002 min
 Response: 409083
 Conc: 9.58 ng/ml

Instrument :
 ECD_R
 ClientSampleId :



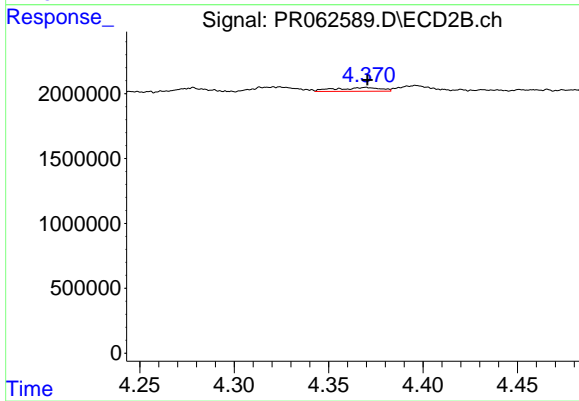
#13 AR-1232-3

R.T.: 4.278 min
 Delta R.T.: 0.000 min
 Response: 365937
 Conc: 9.86 ng/ml



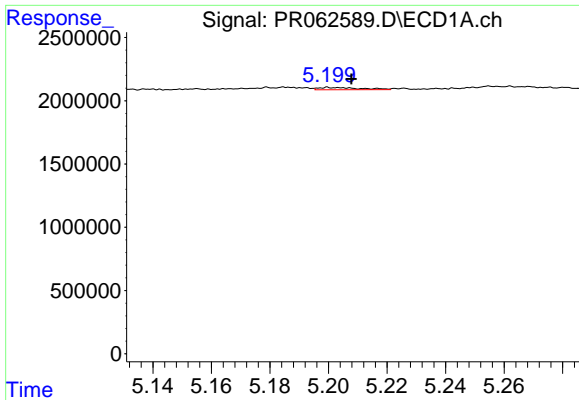
#14 AR-1232-4

R.T.: 5.106 min
 Delta R.T.: 0.002 min
 Response: 139372
 Conc: 6.59 ng/ml



#14 AR-1232-4

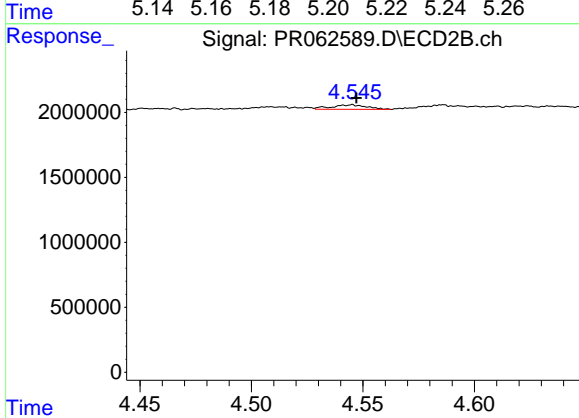
R.T.: 4.370 min
 Delta R.T.: 0.000 min
 Response: 471942
 Conc: 13.94 ng/ml



#15 AR-1232-5

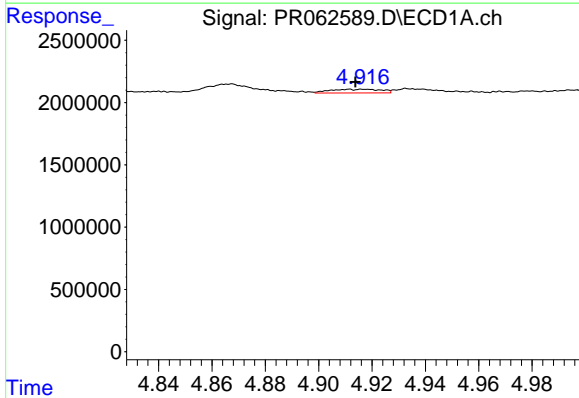
R.T.: 5.200 min
 Delta R.T.: -0.008 min
 Response: 175941
 Conc: 10.12 ng/ml

Instrument :
 ECD_R
 ClientSampleId :



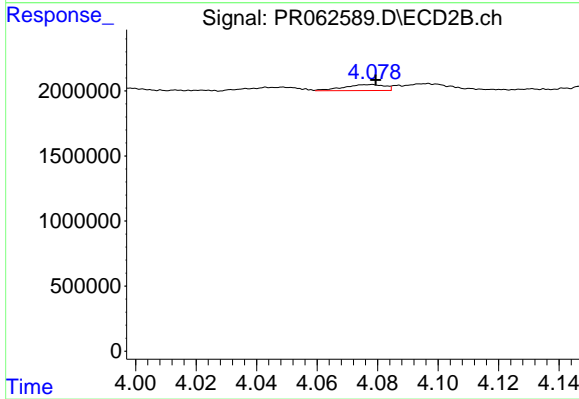
#15 AR-1232-5

R.T.: 4.545 min
 Delta R.T.: -0.002 min
 Response: 378567
 Conc: 9.63 ng/ml



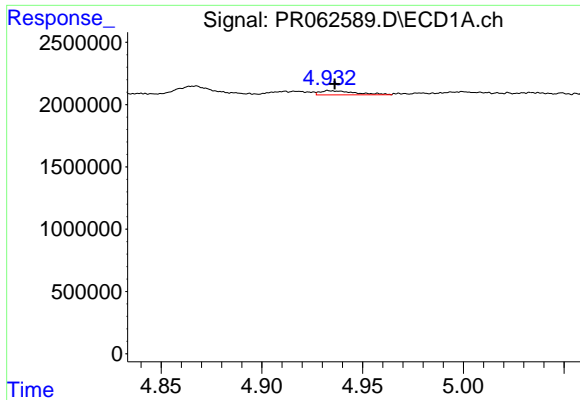
#16 AR-1242-1

R.T.: 4.911 min
 Delta R.T.: -0.002 min
 Response: 390628
 Conc: 7.01 ng/ml



#16 AR-1242-1

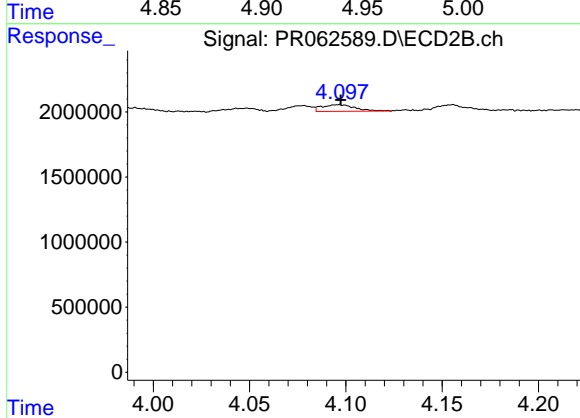
R.T.: 4.077 min
 Delta R.T.: -0.002 min
 Response: 436891
 Conc: 4.86 ng/ml



#17 AR-1242-2

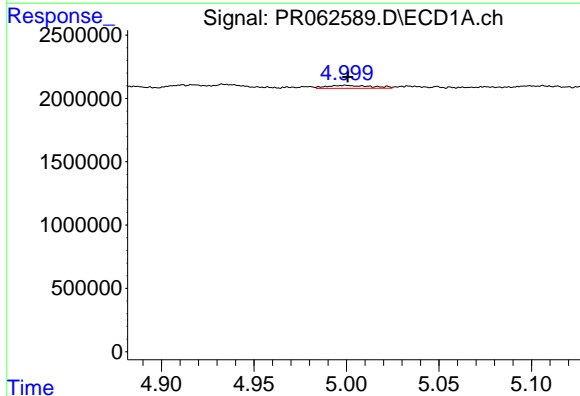
R.T.: 4.934 min
 Delta R.T.: -0.003 min
 Response: 409083
 Conc: 5.10 ng/ml

Instrument :
 ECD_R
 ClientSampleId :



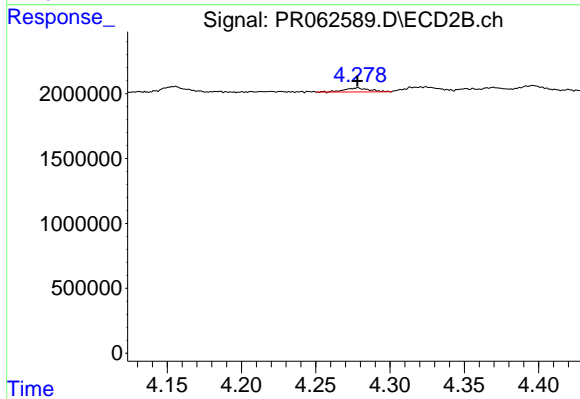
#17 AR-1242-2

R.T.: 4.096 min
 Delta R.T.: -0.001 min
 Response: 626367
 Conc: 5.00 ng/ml



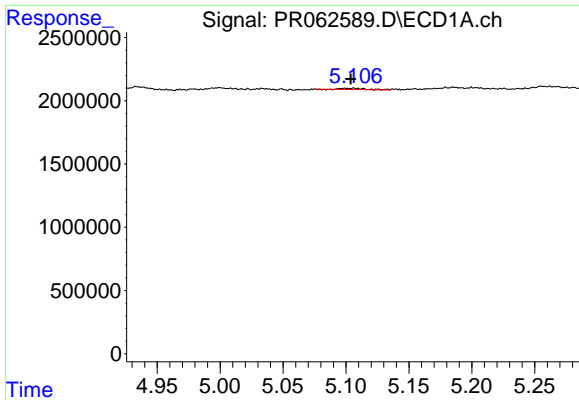
#18 AR-1242-3

R.T.: 5.000 min
 Delta R.T.: 0.000 min
 Response: 388892
 Conc: 7.55 ng/ml



#18 AR-1242-3

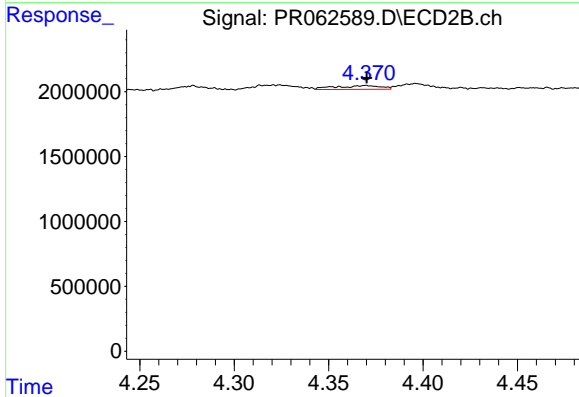
R.T.: 4.278 min
 Delta R.T.: 0.000 min
 Response: 365937
 Conc: 5.29 ng/ml



#19 AR-1242-4

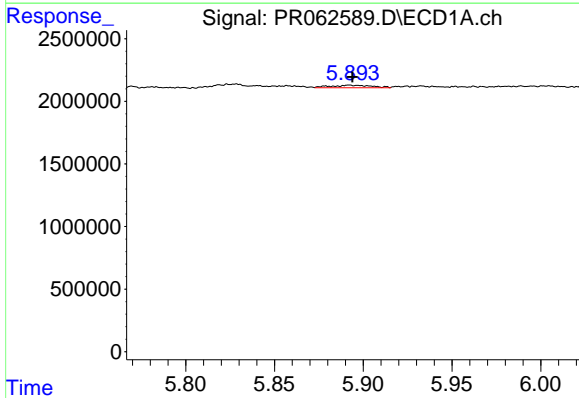
R.T.: 5.106 min
 Delta R.T.: 0.002 min
 Response: 139372
 Conc: 3.45 ng/ml

Instrument :
 ECD_R
 ClientSampleId :



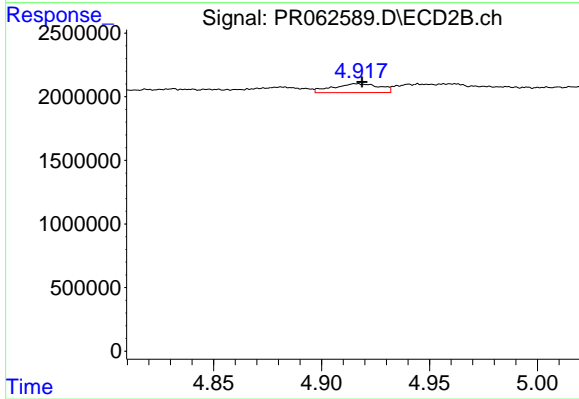
#19 AR-1242-4

R.T.: 4.370 min
 Delta R.T.: 0.000 min
 Response: 471942
 Conc: 6.88 ng/ml



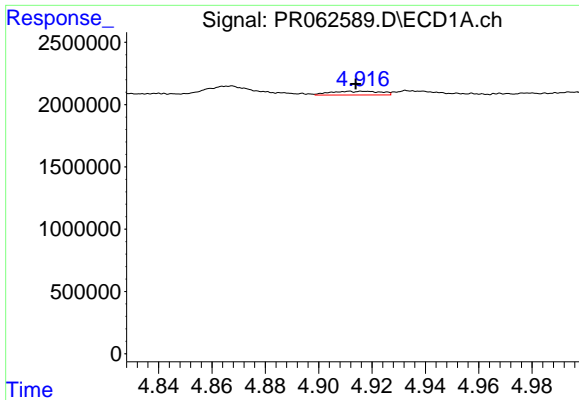
#20 AR-1242-5

R.T.: 5.892 min
 Delta R.T.: -0.002 min
 Response: 314644
 Conc: 7.34 ng/ml



#20 AR-1242-5

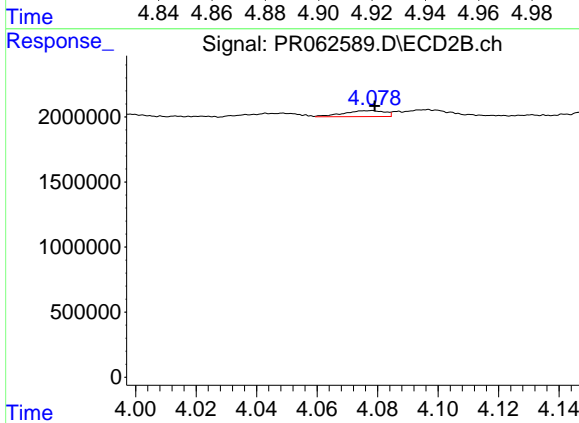
R.T.: 4.916 min
 Delta R.T.: -0.003 min
 Response: 1052709
 Conc: 11.76 ng/ml



#21 AR-1248-1

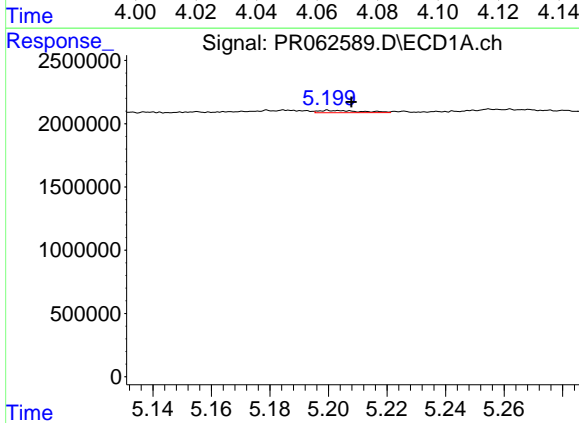
R.T.: 4.911 min
 Delta R.T.: -0.003 min
 Response: 390628
 Conc: 9.51 ng/ml

Instrument :
 ECD_R
 ClientSampleId :



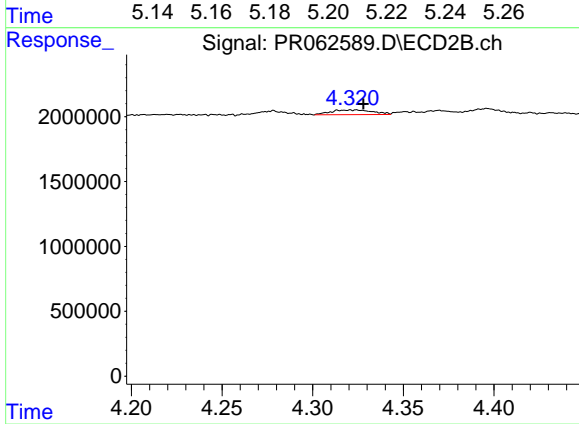
#21 AR-1248-1

R.T.: 4.077 min
 Delta R.T.: -0.002 min
 Response: 436891
 Conc: 6.53 ng/ml



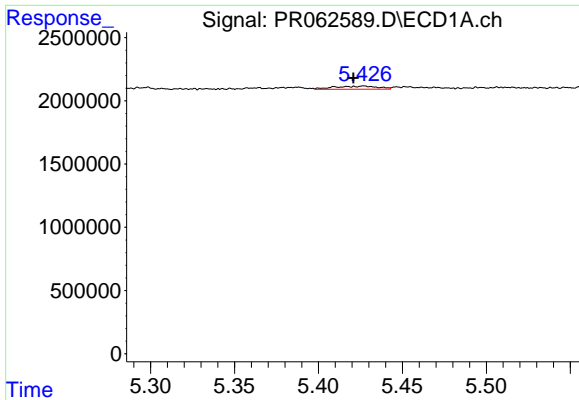
#22 AR-1248-2

R.T.: 5.200 min
 Delta R.T.: -0.008 min
 Response: 175941
 Conc: 2.90 ng/ml



#22 AR-1248-2

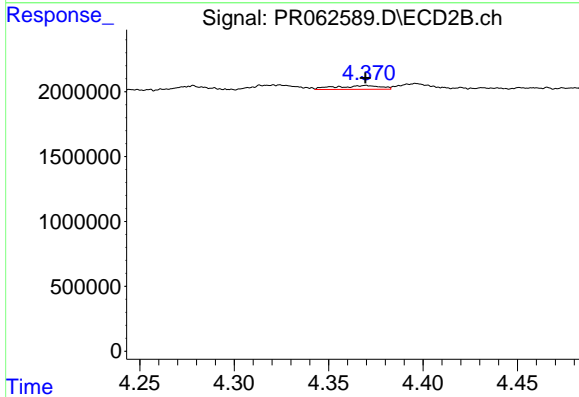
R.T.: 4.324 min
 Delta R.T.: -0.004 min
 Response: 582003
 Conc: 6.07 ng/ml



#23 AR-1248-3

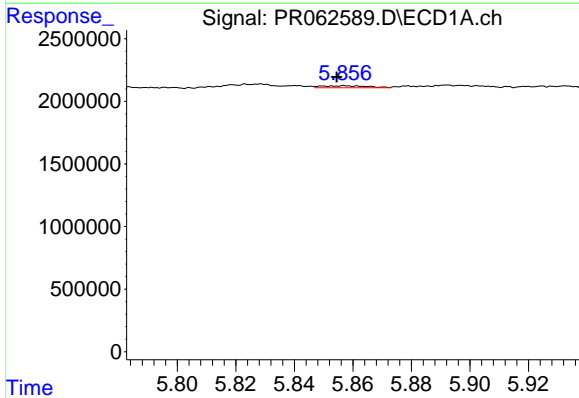
R.T.: 5.427 min
 Delta R.T.: 0.006 min
 Response: 438508
 Conc: 6.25 ng/ml

Instrument :
 ECD_R
 ClientSampleId :



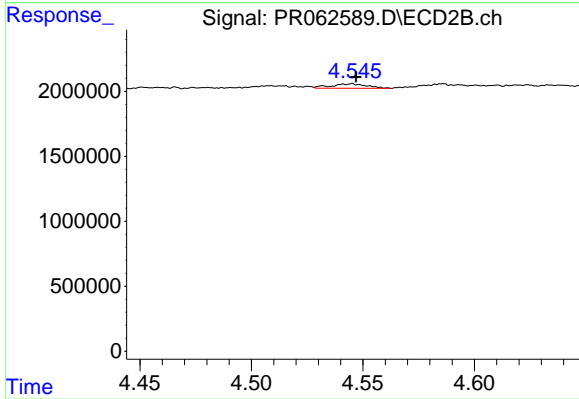
#23 AR-1248-3

R.T.: 4.370 min
 Delta R.T.: 0.000 min
 Response: 471942
 Conc: 4.78 ng/ml



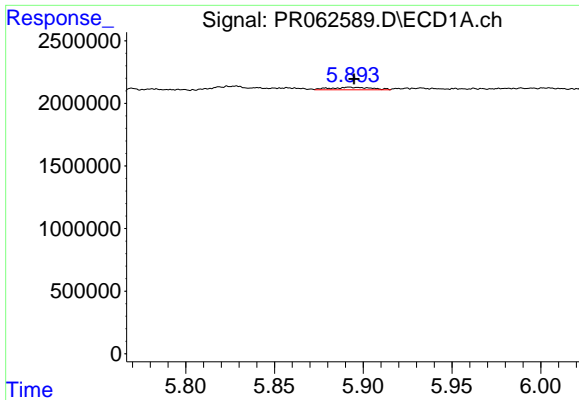
#24 AR-1248-4

R.T.: 5.857 min
 Delta R.T.: 0.003 min
 Response: 173067
 Conc: 2.39 ng/ml



#24 AR-1248-4

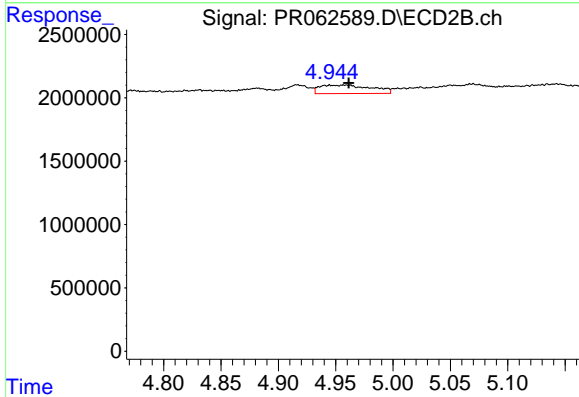
R.T.: 4.545 min
 Delta R.T.: -0.002 min
 Response: 378567
 Conc: 3.19 ng/ml



#25 AR-1248-5

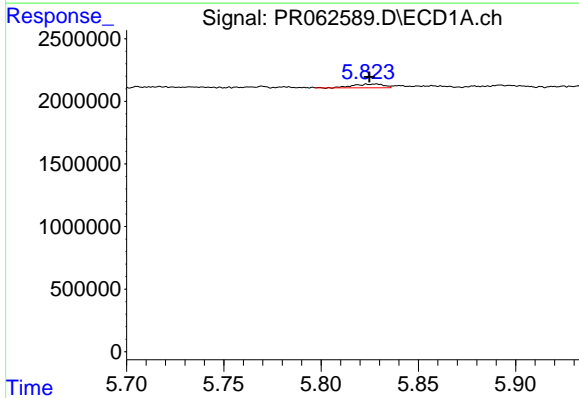
R.T.: 5.892 min
 Delta R.T.: -0.003 min
 Response: 314644
 Conc: 4.44 ng/ml

Instrument :
 ECD_R
 ClientSampleId :



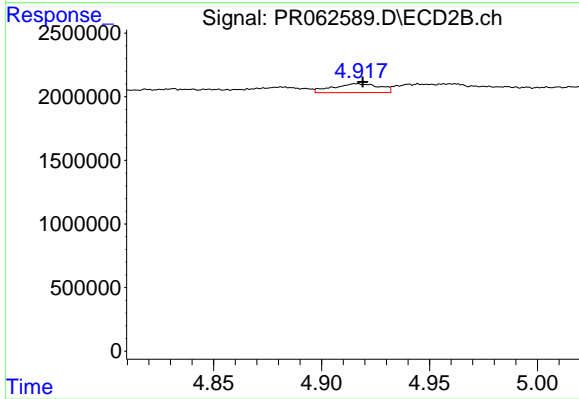
#25 AR-1248-5

R.T.: 4.960 min
 Delta R.T.: -0.001 min
 Response: 2117558
 Conc: 17.72 ng/ml



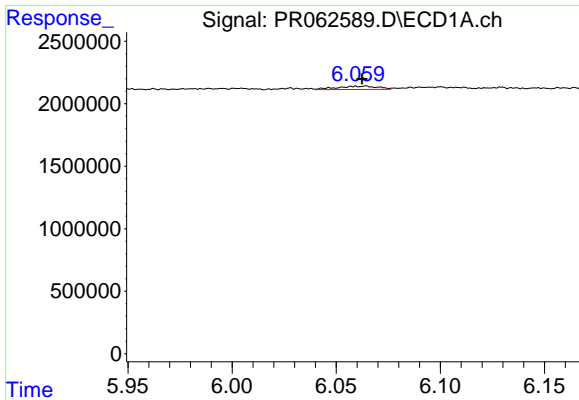
#26 AR-1254-1

R.T.: 5.828 min
 Delta R.T.: 0.004 min
 Response: 329510
 Conc: 4.12 ng/ml



#26 AR-1254-1

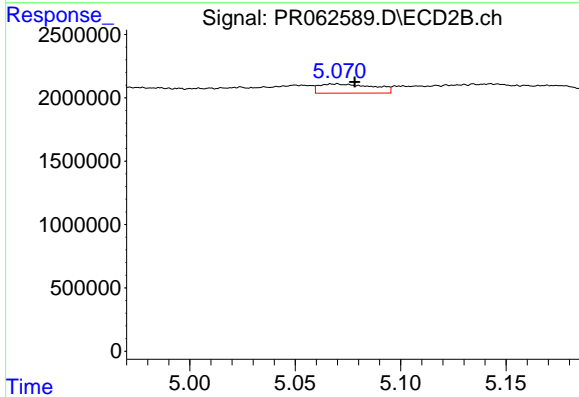
R.T.: 4.916 min
 Delta R.T.: -0.003 min
 Response: 1052709
 Conc: 5.88 ng/ml



#27 AR-1254-2

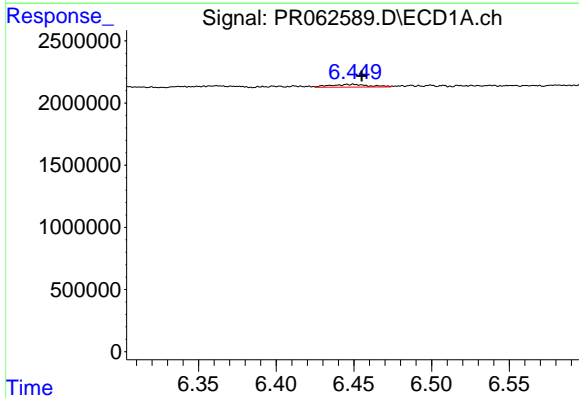
R.T.: 6.064 min
 Delta R.T.: 0.002 min
 Response: 354828
 Conc: 2.97 ng/ml

Instrument :
 ECD_R
 ClientSampleId :



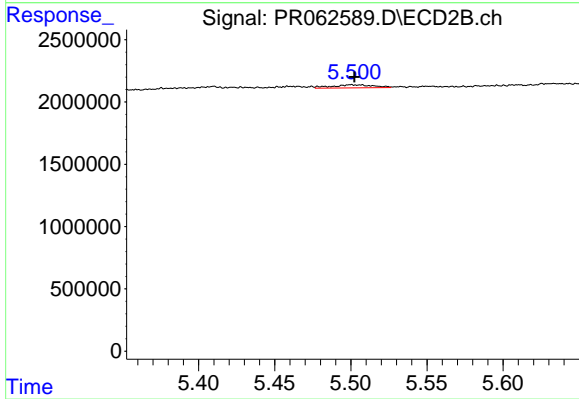
#27 AR-1254-2

R.T.: 5.069 min
 Delta R.T.: -0.009 min
 Response: 1305866
 Conc: 8.35 ng/ml



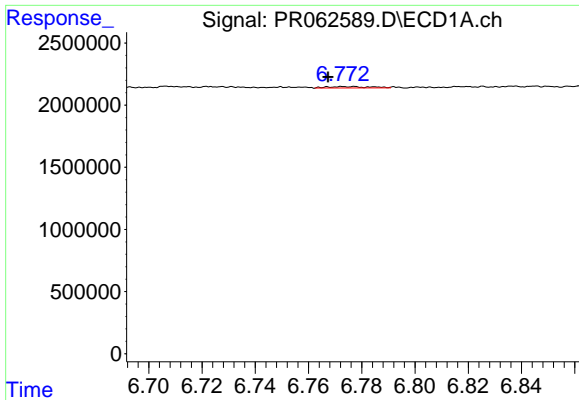
#28 AR-1254-3

R.T.: 6.450 min
 Delta R.T.: -0.005 min
 Response: 401056
 Conc: 3.39 ng/ml



#28 AR-1254-3

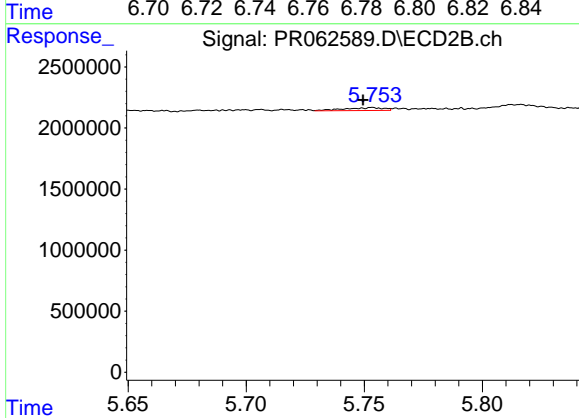
R.T.: 5.500 min
 Delta R.T.: -0.002 min
 Response: 471032
 Conc: 1.81 ng/ml



#29 AR-1254-4

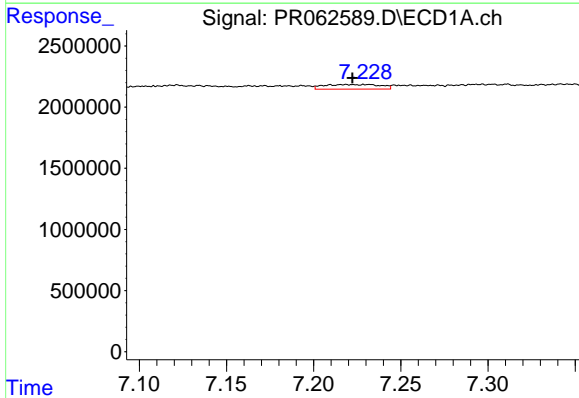
R.T.: 6.777 min
 Delta R.T.: 0.009 min
 Response: 125671
 Conc: 1.51 ng/ml

Instrument :
 ECD_R
 ClientSampleId :



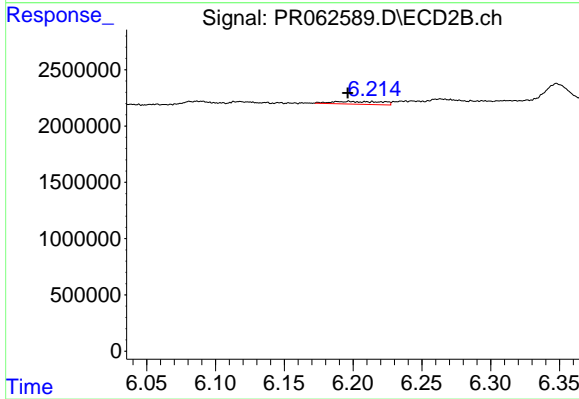
#29 AR-1254-4

R.T.: 5.754 min
 Delta R.T.: 0.004 min
 Response: 278587
 Conc: 1.66 ng/ml



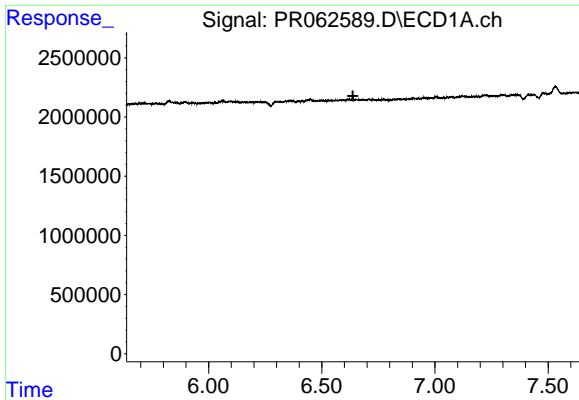
#30 AR-1254-5

R.T.: 7.218 min
 Delta R.T.: -0.004 min
 Response: 852271
 Conc: 9.48 ng/ml



#30 AR-1254-5

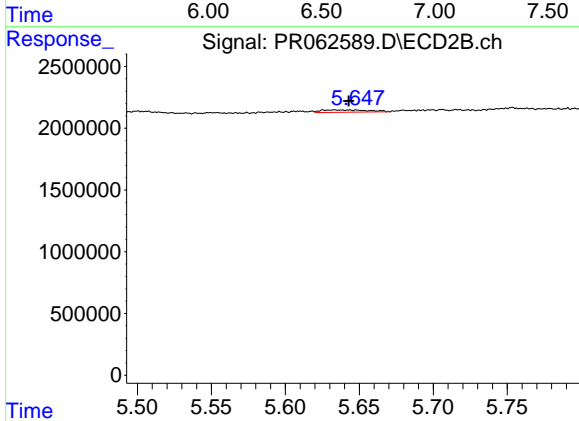
R.T.: 6.197 min
 Delta R.T.: 0.001 min
 Response: 608043
 Conc: 2.45 ng/ml



#31 AR-1260-1

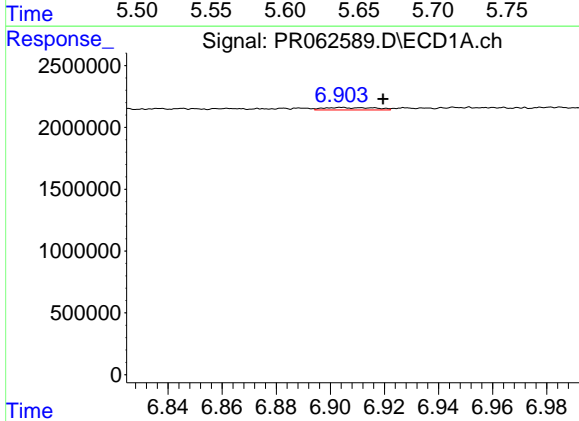
R.T.: 0.000 min
 Exp R.T.: 6.638 min
 Response: 0
 Conc: N.D.

Instrument :
 ECD_R
 ClientSampleId :



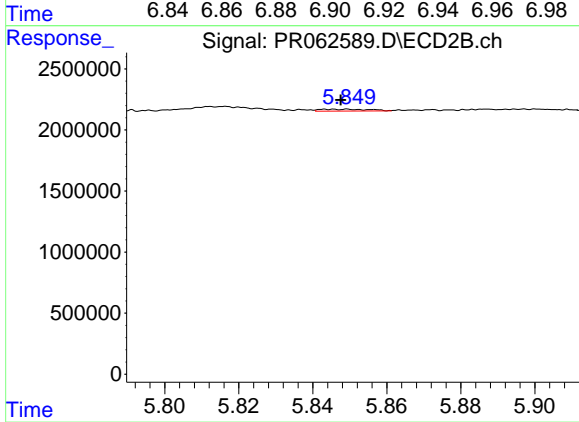
#31 AR-1260-1

R.T.: 5.633 min
 Delta R.T.: -0.010 min
 Response: 416951
 Conc: 2.14 ng/ml



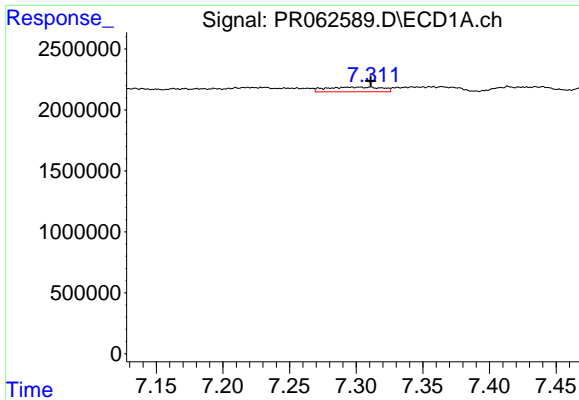
#32 AR-1260-2

R.T.: 6.904 min
 Delta R.T.: -0.015 min
 Response: 261726
 Conc: 2.39 ng/ml



#32 AR-1260-2

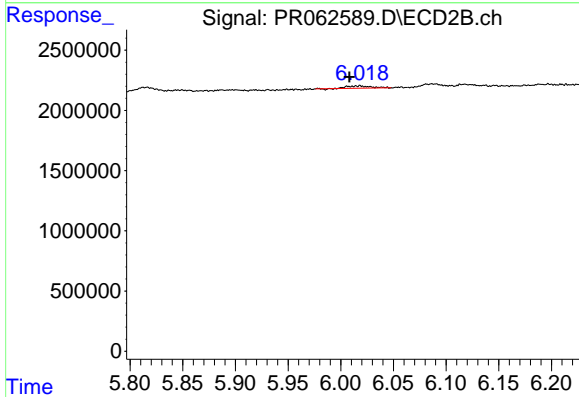
R.T.: 5.849 min
 Delta R.T.: 0.002 min
 Response: 137524
 Conc: 0.58 ng/ml



#33 AR-1260-3

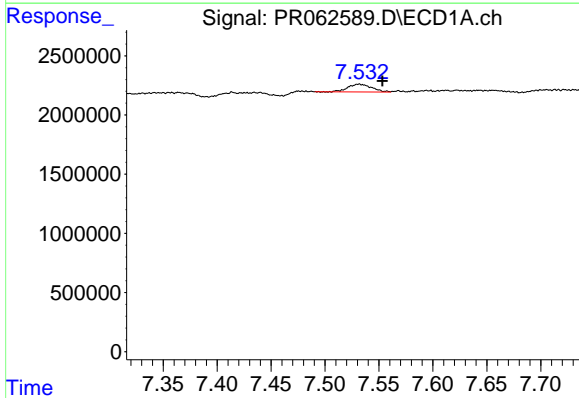
R.T.: 7.303 min
 Delta R.T.: -0.008 min
 Response: 1118316
 Conc: 13.72 ng/ml

Instrument :
 ECD_R
 ClientSampleId :



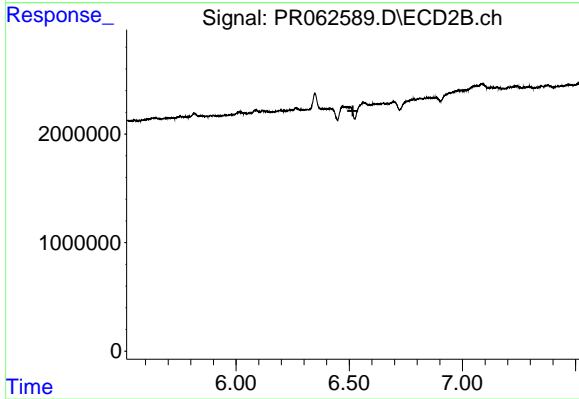
#33 AR-1260-3

R.T.: 6.018 min
 Delta R.T.: 0.010 min
 Response: 295511
 Conc: 1.31 ng/ml



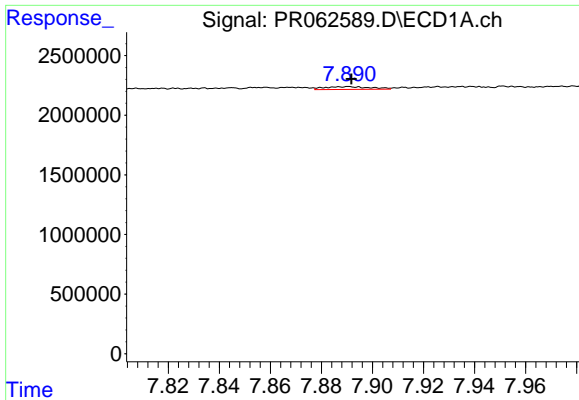
#34 AR-1260-4

R.T.: 7.531 min
 Delta R.T.: -0.022 min
 Response: 984276
 Conc: 10.94 ng/ml



#34 AR-1260-4

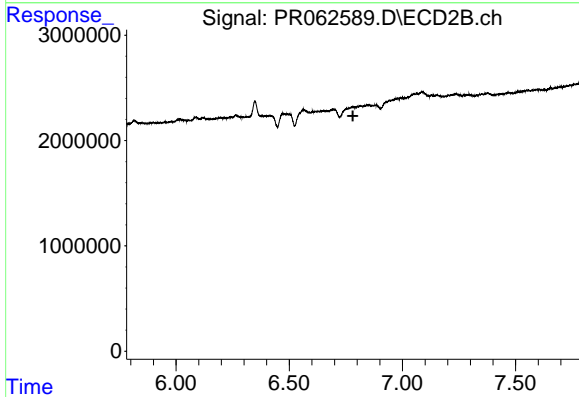
R.T.: 0.000 min
 Exp R.T. : 6.516 min
 Response: 0
 Conc: N.D.



#35 AR-1260-5

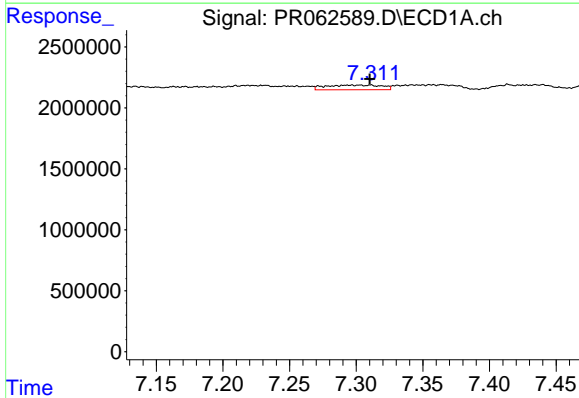
R.T.: 7.891 min
 Delta R.T.: -0.001 min
 Response: 288335
 Conc: 1.78 ng/ml

Instrument :
 ECD_R
 ClientSampleId :



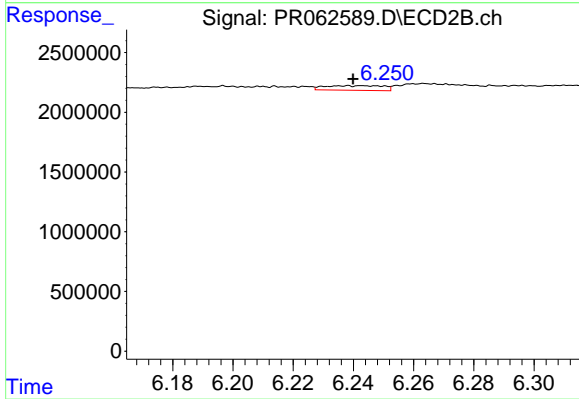
#35 AR-1260-5

R.T.: 0.000 min
 Exp R.T. : 6.781 min
 Response: 0
 Conc: N.D.



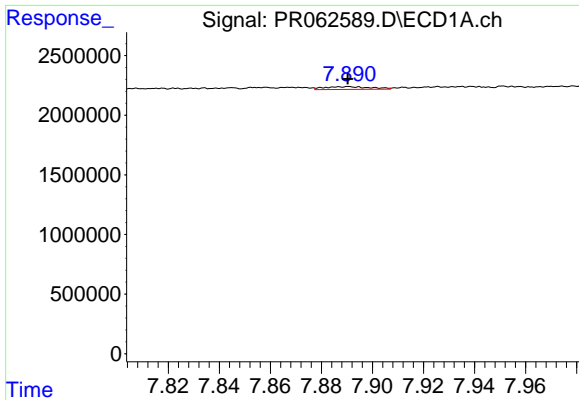
#36 AR-1262-1

R.T.: 7.303 min
 Delta R.T.: -0.008 min
 Response: 1118316
 Conc: 9.74 ng/ml



#36 AR-1262-1

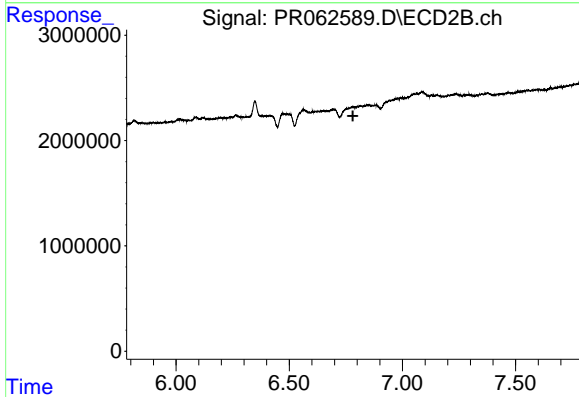
R.T.: 6.243 min
 Delta R.T.: 0.003 min
 Response: 529637
 Conc: 2.03 ng/ml



#37 AR-1262-2

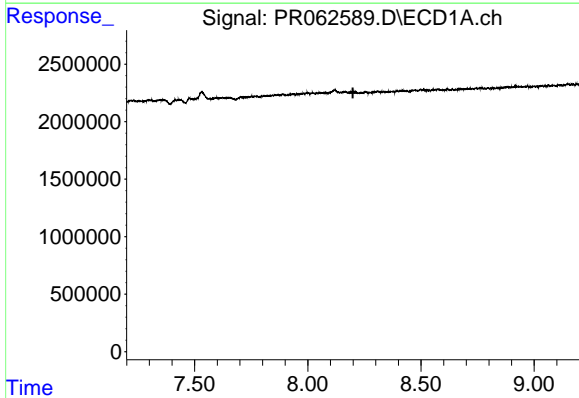
R.T.: 7.891 min
 Delta R.T.: 0.000 min
 Response: 288335
 Conc: 1.60 ng/ml

Instrument :
 ECD_R
 ClientSampleId :



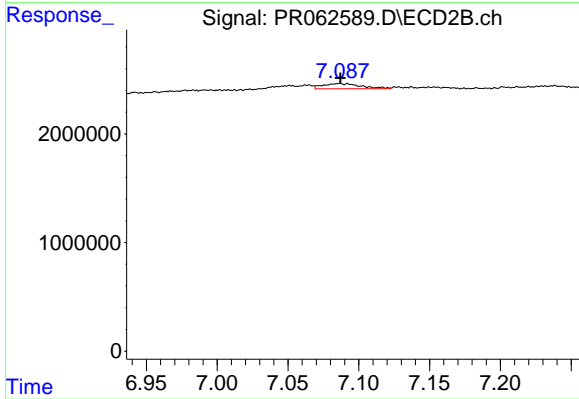
#37 AR-1262-2

R.T.: 0.000 min
 Exp R.T. : 6.781 min
 Response: 0
 Conc: N.D.



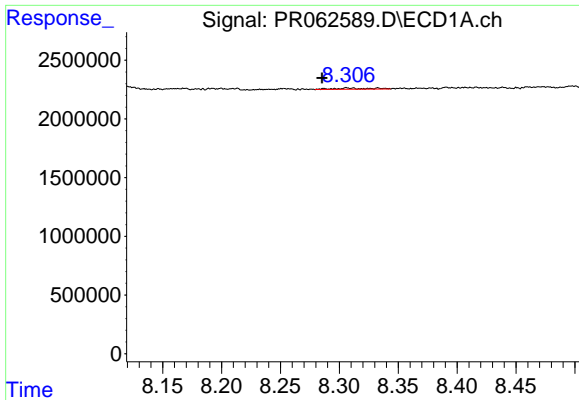
#38 AR-1262-3

R.T.: 0.000 min
 Exp R.T. : 8.199 min
 Response: 0
 Conc: N.D.



#38 AR-1262-3

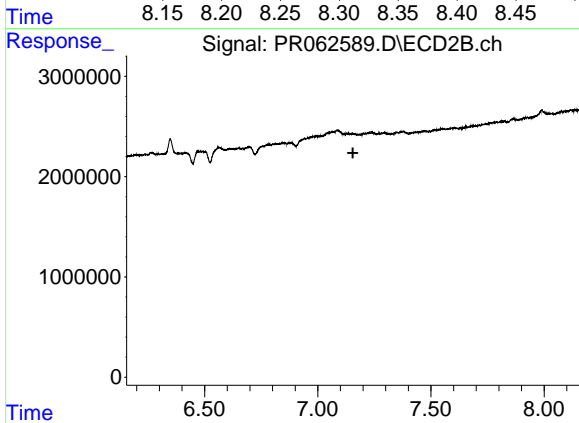
R.T.: 7.086 min
 Delta R.T.: 0.000 min
 Response: 897707
 Conc: 4.52 ng/ml



#39 AR-1262-4

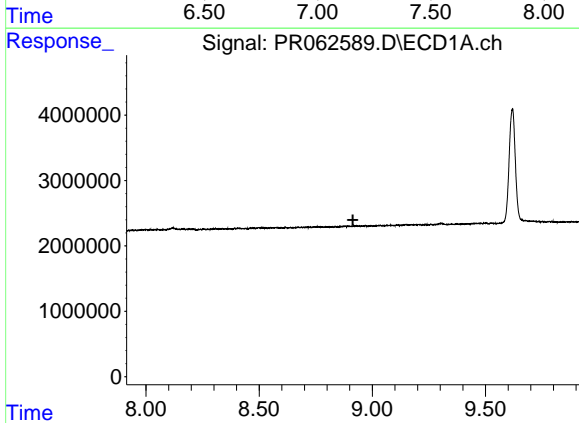
R.T.: 8.306 min
 Delta R.T.: 0.021 min
 Response: 215866
 Conc: 2.14 ng/ml

Instrument :
 ECD_R
 ClientSampleId :



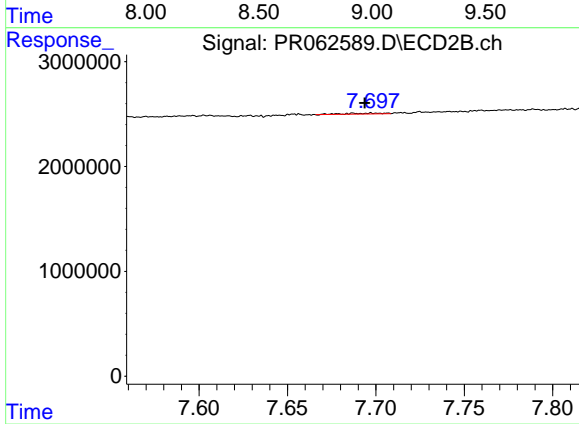
#39 AR-1262-4

R.T.: 0.000 min
 Exp R.T. : 7.155 min
 Response: 0
 Conc: N.D.



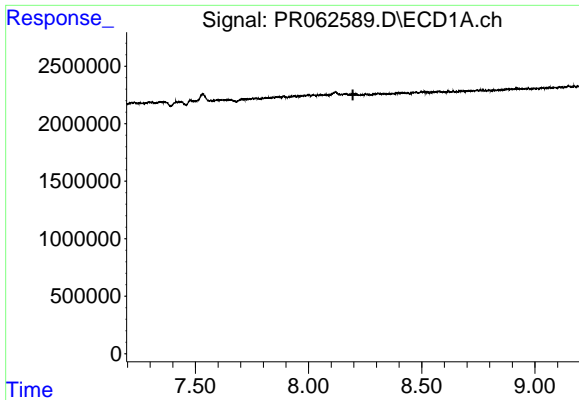
#40 AR-1262-5

R.T.: 0.000 min
 Exp R.T. : 8.914 min
 Response: 0
 Conc: N.D.



#40 AR-1262-5

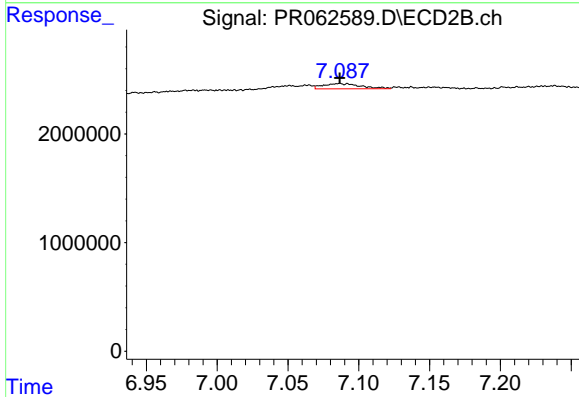
R.T.: 7.698 min
 Delta R.T.: 0.004 min
 Response: 107233
 Conc: 0.60 ng/ml



#41 AR-1268-1

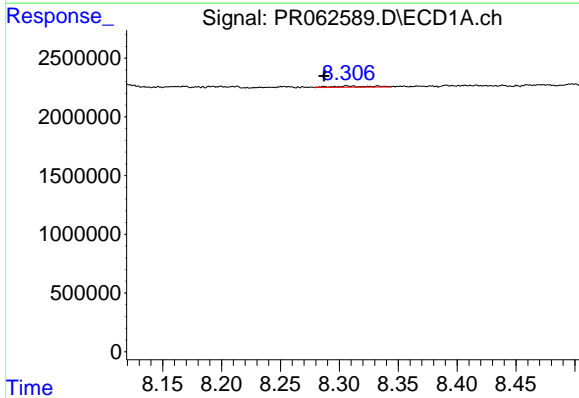
R.T.: 0.000 min
 Exp R.T.: 8.196 min
 Response: 0
 Conc: N.D.

Instrument : ECD_R
 ClientSampleId :



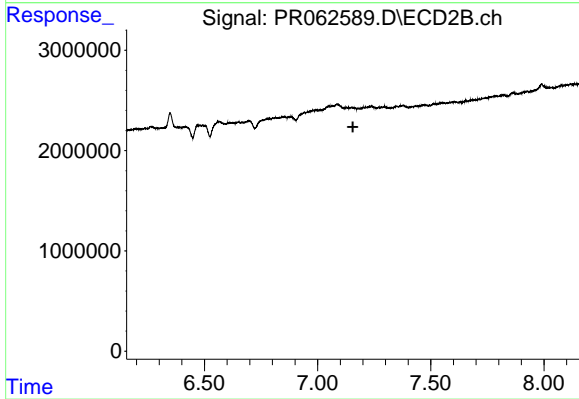
#41 AR-1268-1

R.T.: 7.086 min
 Delta R.T.: 0.000 min
 Response: 897707
 Conc: 1.54 ng/ml



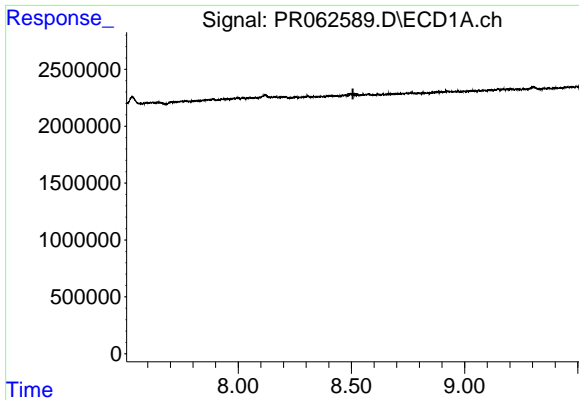
#42 AR-1268-2

R.T.: 8.306 min
 Delta R.T.: 0.019 min
 Response: 215866
 Conc: 1.07 ng/ml



#42 AR-1268-2

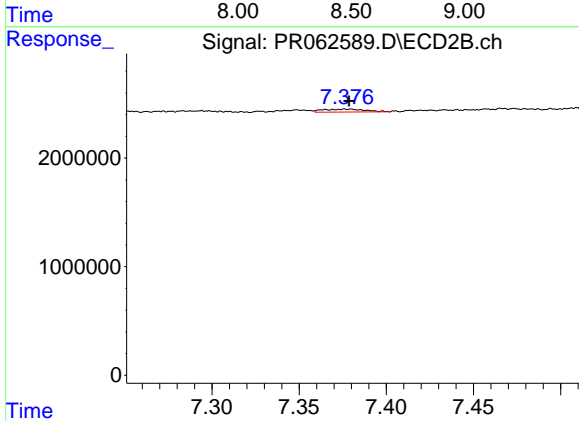
R.T.: 0.000 min
 Exp R.T.: 7.156 min
 Response: 0
 Conc: N.D.



#43 AR-1268-3

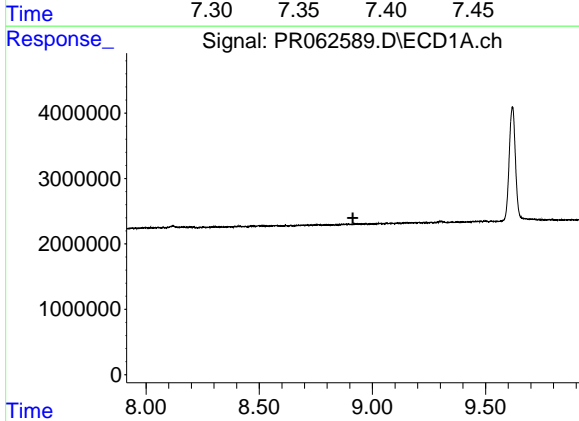
R.T.: 0.000 min
 Exp R.T.: 8.507 min
 Response: 0
 Conc: N.D.

Instrument :
 ECD_R
 ClientSampleId :



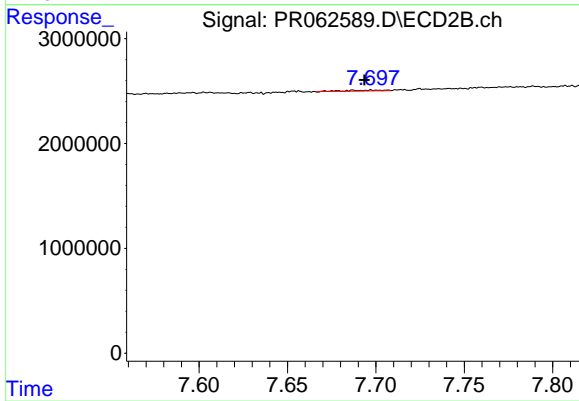
#43 AR-1268-3

R.T.: 7.376 min
 Delta R.T.: -0.002 min
 Response: 430571
 Conc: 0.91 ng/ml



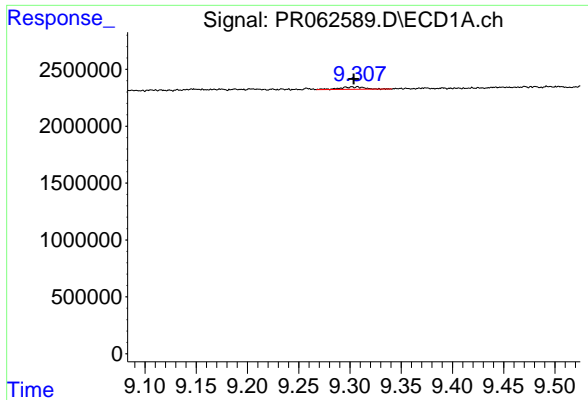
#44 AR-1268-4

R.T.: 0.000 min
 Exp R.T.: 8.914 min
 Response: 0
 Conc: N.D.



#44 AR-1268-4

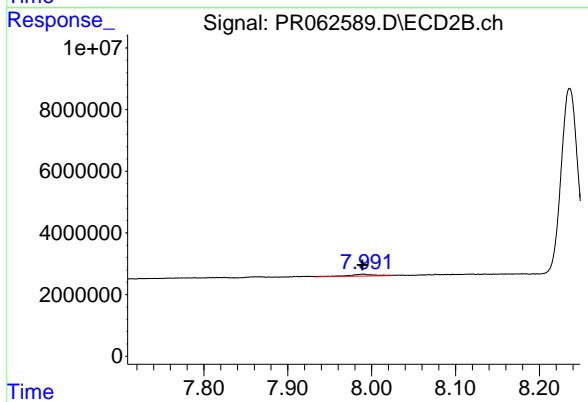
R.T.: 7.698 min
 Delta R.T.: 0.004 min
 Response: 107233
 Conc: 0.54 ng/ml



#45 AR-1268-5

R.T.: 9.305 min
 Delta R.T.: 0.002 min
 Response: 377468
 Conc: 0.74 ng/ml

Instrument :
 ECD_R
 ClientSampleId :



#45 AR-1268-5

R.T.: 7.990 min
 Delta R.T.: 0.000 min
 Response: 1311684
 Conc: 0.88 ng/ml