

Data Path : Z:\pestpcbsrv\HPCHEM1\ECD\_R\Data\PR081219\  
 Data File : PR040272.D  
 Signal(s) : Signal #1: ECD1A.ch Signal #2: ECD2B.ch  
 Acq On : 12 Aug 2019 10:19  
 Operator : SM\AJ  
 Sample : I.BLK  
 Misc :  
 ALS Vial : 2 Sample Multiplier: 1

Instrument :  
 ECD\_R  
 ClientSampleId :  
 I.BLK

Integration File signal 1: autoint1.e  
 Integration File signal 2: autoint2.e  
 Quant Time: Aug 12 12:20:42 2019  
 Quant Method : Z:\pestpcbsrv\HPCHEM1\ECD\_R\Method\PR081019.M  
 Quant Title : GC EXTRACTABLES  
 QLast Update : Sat Aug 10 07:38:17 2019  
 Response via : Initial Calibration  
 Integrator: ChemStation

Volume Inj. : 2 µl  
 Signal #1 Phase : ZB-MR1 Signal #2 Phase: ZB-MR2  
 Signal #1 Info : 30Mx0.32mmx 0.50µ Signal #2 Info : 30M x 0.32mm x 0.25µm

Compound	RT#1	RT#2	Resp#1	Resp#2	ng/ml	ng/ml
-----						
System Monitoring Compounds						
1) SA Tetrachlo...	3.748	4.590	41406299	190.9E6	17.278	18.339
2) SA Decachlor...	8.675	10.310	34295993	156.2E6	14.094	17.836 #

Target Compounds

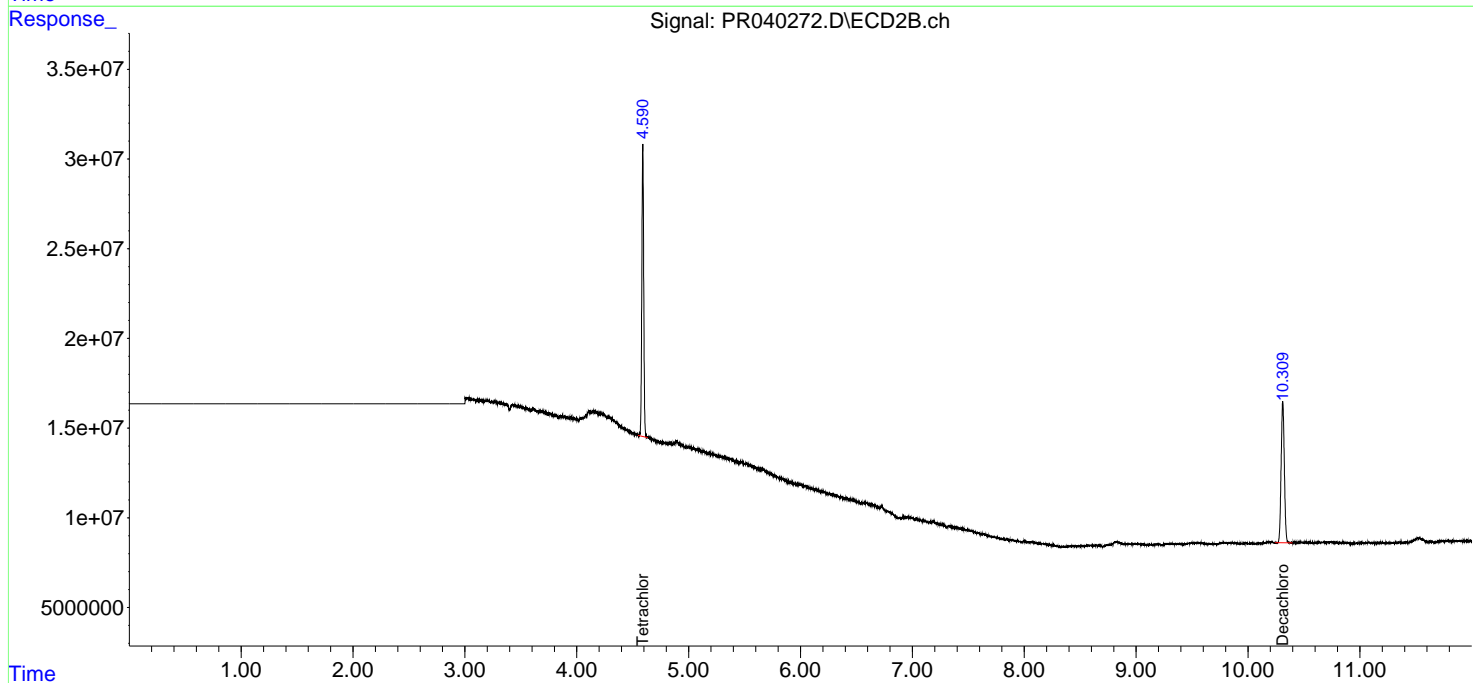
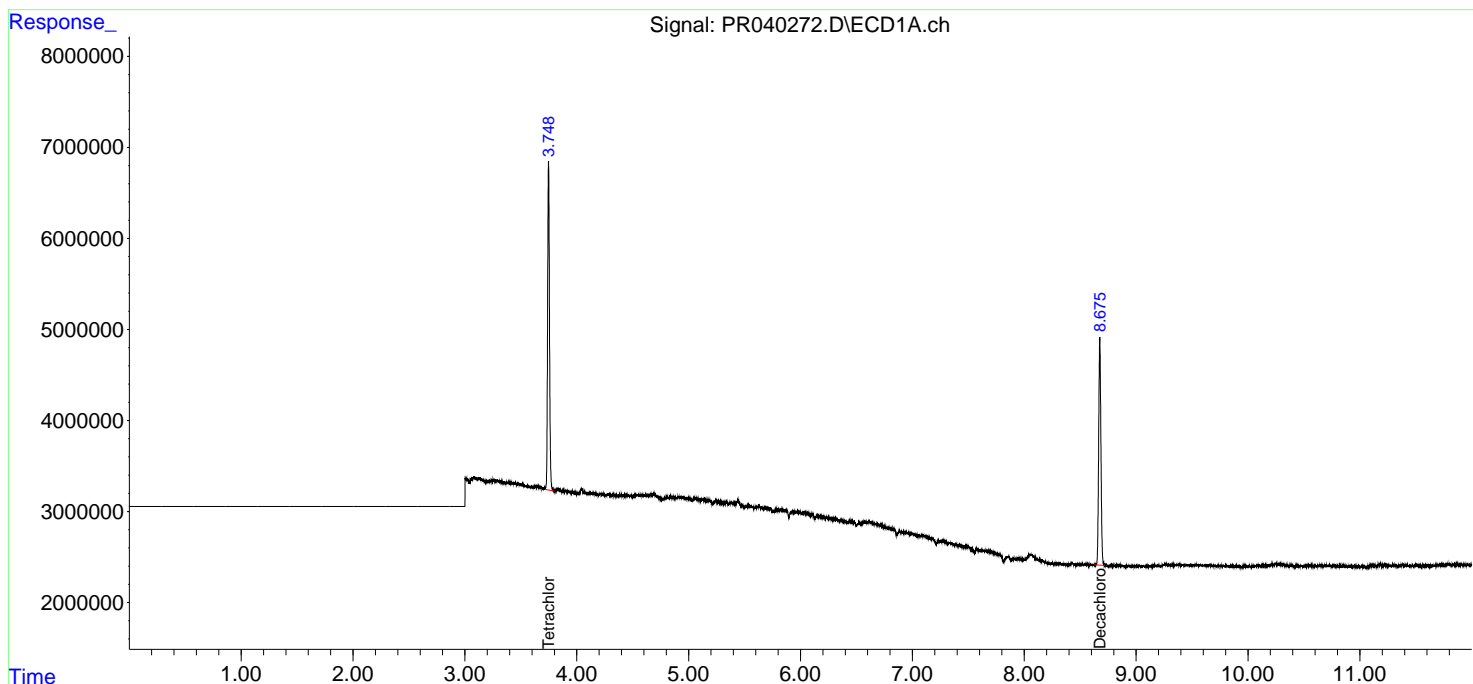
(f)=RT Delta > 1/2 Window (#)=Amounts differ by > 25% (m)=manual int.

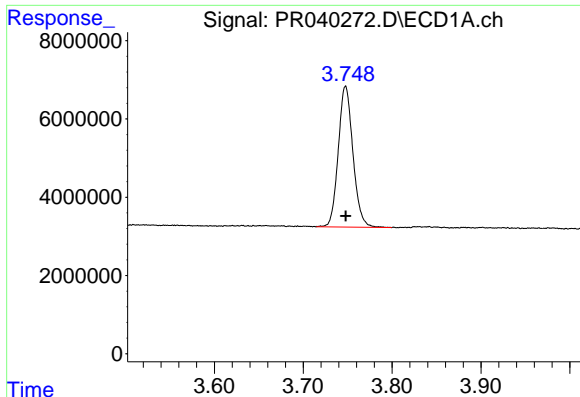
Data Path : Z:\pestpcbsrv\HPCHEM1\ECD\_R\Data\PR081219\  
 Data File : PR040272.D  
 Signal(s) : Signal #1: ECD1A.ch Signal #2: ECD2B.ch  
 Acq On : 12 Aug 2019 10:19  
 Operator : SM\AJ  
 Sample : I.BLK  
 Misc :  
 ALS Vial : 2 Sample Multiplier: 1

Instrument :  
 ECD\_R  
 ClientSampleId :  
 I.BLK

Integration File signal 1: autoint1.e  
 Integration File signal 2: autoint2.e  
 Quant Time: Aug 12 12:20:42 2019  
 Quant Method : Z:\pestpcbsrv\HPCHEM1\ECD\_R\Method\PR081019.M  
 Quant Title : GC EXTRACTABLES  
 QLast Update : Sat Aug 10 07:38:17 2019  
 Response via : Initial Calibration  
 Integrator: ChemStation

Volume Inj. : 2 µl  
 Signal #1 Phase : ZB-MR1 Signal #2 Phase: ZB-MR2  
 Signal #1 Info : 30Mx0.32mmx 0.50µ Signal #2 Info : 30M x 0.32mm x 0.25µm

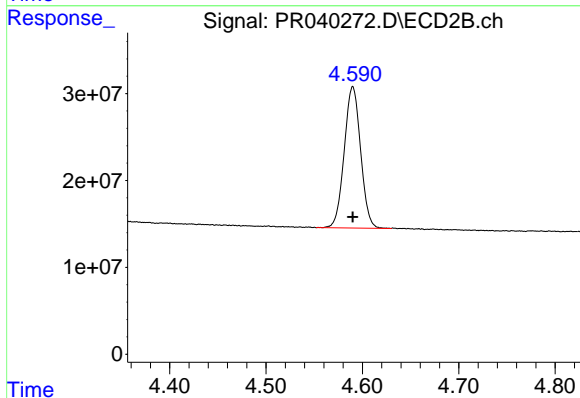




#1 Tetrachloro-m-xylene

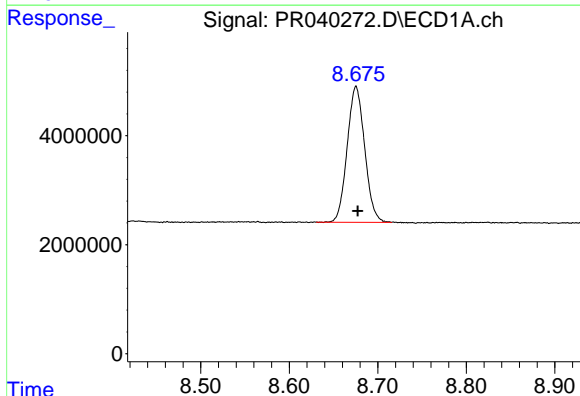
R.T.: 3.748 min  
Delta R.T.: 0.000 min  
Response: 41406299  
Conc: 17.28 ng/ml

Instrument :  
ECD\_R  
ClientSampled :  
I.BLK



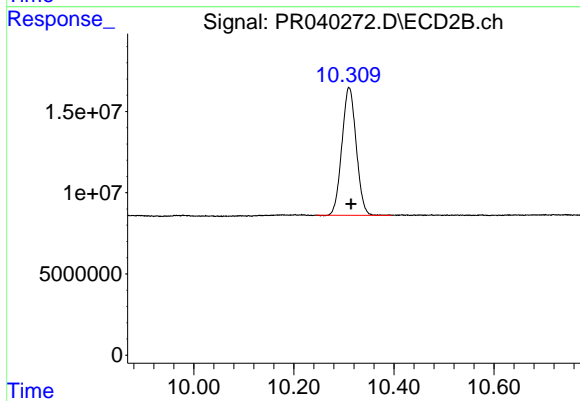
#1 Tetrachloro-m-xylene

R.T.: 4.590 min  
Delta R.T.: 0.000 min  
Response: 190924337  
Conc: 18.34 ng/ml



#2 Decachlorobiphenyl

R.T.: 8.675 min  
Delta R.T.: -0.002 min  
Response: 34295993  
Conc: 14.09 ng/ml



#2 Decachlorobiphenyl

R.T.: 10.310 min  
Delta R.T.: -0.004 min  
Response: 156199108  
Conc: 17.84 ng/ml