

Data Path : Z:\pestpcbsrv\HPCHEM1\ECD_R\Data\PR081219\
 Data File : PR040277.D
 Signal(s) : Signal #1: ECD1A.ch Signal #2: ECD2B.ch
 Acq On : 12 Aug 2019 12:28
 Operator : SM\AJ
 Sample : K4276-02
 Misc :
 ALS Vial : 7 Sample Multiplier: 1

Instrument :
 ECD_R
ClientSampleId :
 HPPER-3-080819-22

Manual Integrations
APPROVED

Ankita
 8/14/2019 12:18:52 PM

Integration File signal 1: autoint1.e
 Integration File signal 2: autoint2.e
 Quant Time: Aug 12 12:51:24 2019
 Quant Method : Z:\pestpcbsrv\HPCHEM1\ECD_R\Method\PR081019.M
 Quant Title : GC EXTRACTABLES
 QLast Update : Sat Aug 10 07:38:17 2019
 Response via : Initial Calibration
 Integrator: ChemStation

Volume Inj. : 2 µl
 Signal #1 Phase : ZB-MR1 Signal #2 Phase: ZB-MR2
 Signal #1 Info : 30Mx0.32mmx 0.50µ Signal #2 Info : 30M x 0.32mm x 0.25µm

Compound	RT#1	RT#2	Resp#1	Resp#2	ng/ml	ng/ml

System Monitoring Compounds						
1) SA Tetrachlo...	3.749	4.591	40528893	141.4E6	16.912	13.579
2) SA Decachlor...	8.677	10.312	23940124	119.4E6	9.838m	13.632 #
Target Compounds						
21) L5 AR-1248-1	4.814	5.745	13716368	46820198	300.972	250.580
22) L5 AR-1248-2	5.044	6.013	19939546	68003166	322.400	279.668
23) L5 AR-1248-3	5.085	6.216	20343555	94248812	322.262	344.714
24) L5 AR-1248-4	5.254	6.615	27417750	128.6E6	355.691	409.611
25) L5 AR-1248-5	5.639	6.654	34389589	129.7E6	448.890	437.718

(f)=RT Delta > 1/2 Window (#)=Amounts differ by > 25% (m)=manual int.

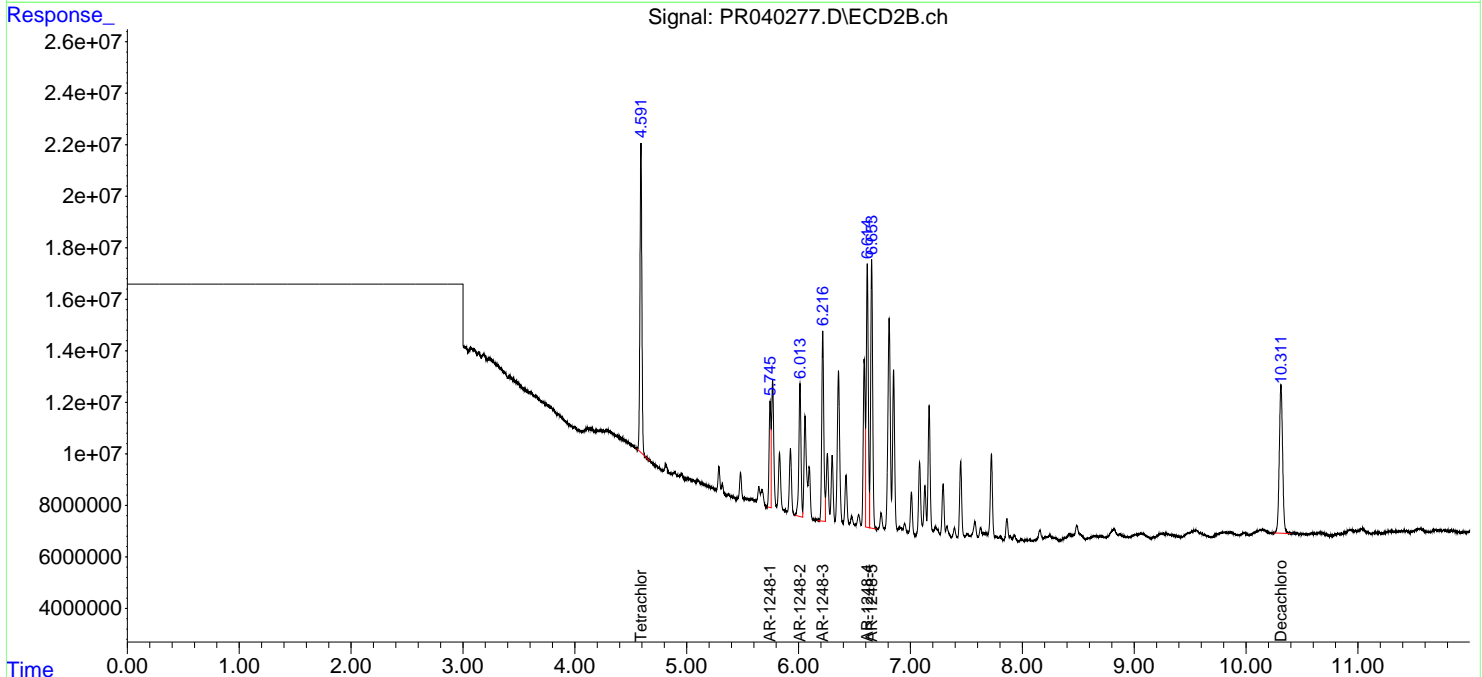
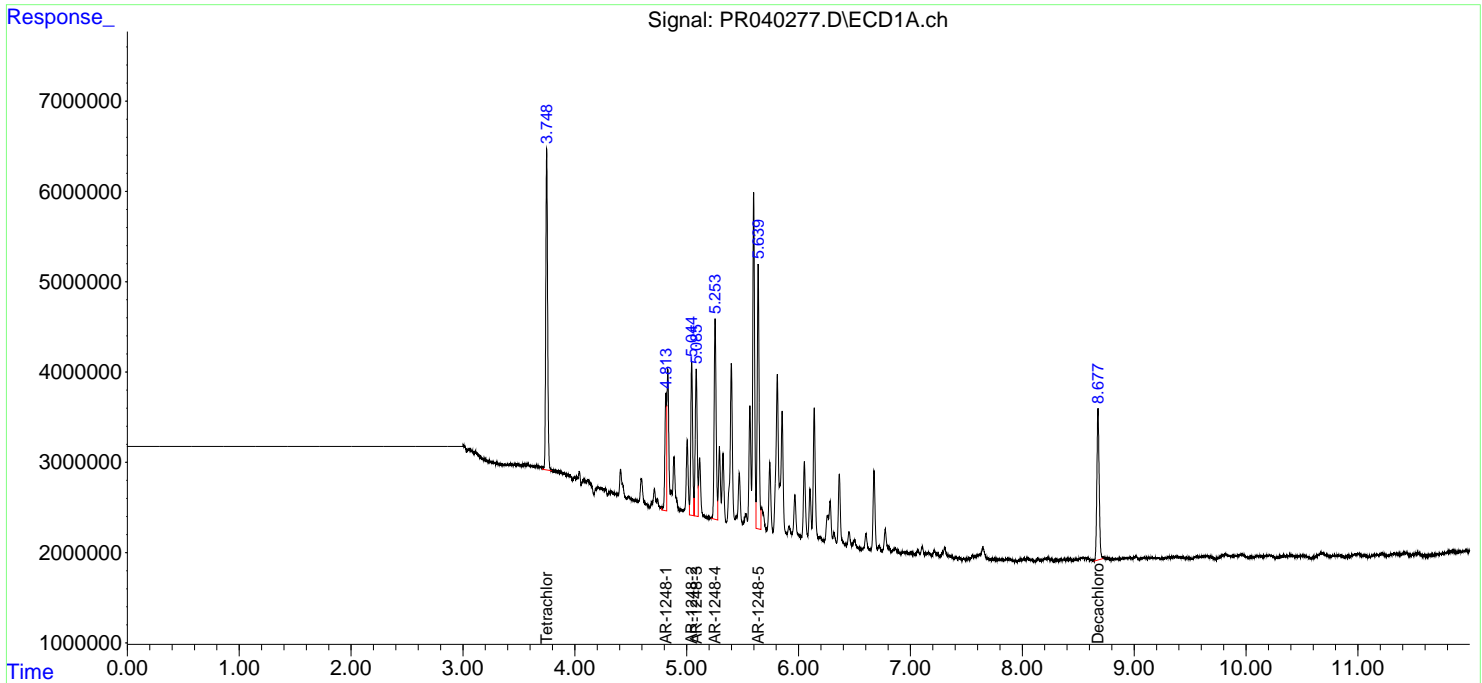
Data Path : Z:\pestpcbsrv\HPCHEM1\ECD_R\Data\PR081219\
 Data File : PR040277.D
 Signal(s) : Signal #1: ECD1A.ch Signal #2: ECD2B.ch
 Acq On : 12 Aug 2019 12:28
 Operator : SM\AJ
 Sample : K4276-02
 Misc :
 ALS Vial : 7 Sample Multiplier: 1

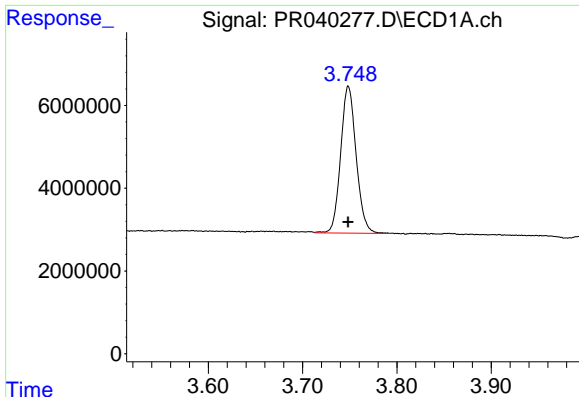
Instrument :
 ECD_R
ClientSampleID :
 HPPER-3-080819-22

Manual Integrations
APPROVED
 Ankita
 8/14/2019 12:18:52 PM

Integration File signal 1: autoint1.e
 Integration File signal 2: autoint2.e
 Quant Time: Aug 12 12:51:24 2019
 Quant Method : Z:\pestpcbsrv\HPCHEM1\ECD_R\Method\PR081019.M
 Quant Title : GC EXTRACTABLES
 QLast Update : Sat Aug 10 07:38:17 2019
 Response via : Initial Calibration
 Integrator: ChemStation

Volume Inj. : 2 µl
 Signal #1 Phase : ZB-MR1 Signal #2 Phase: ZB-MR2
 Signal #1 Info : 30Mx0.32mmx 0.50µ Signal #2 Info : 30M x 0.32mm x 0.25µm



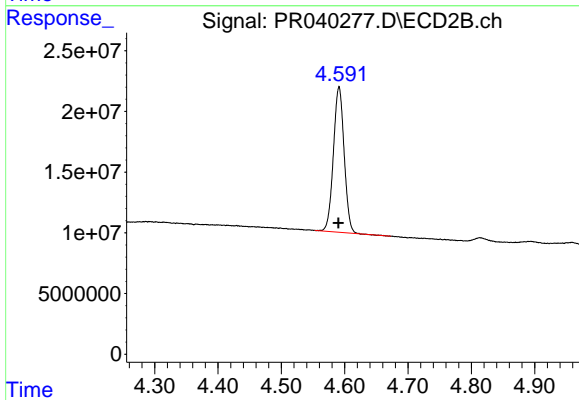


#1 Tetrachloro-m-xylene
 R.T.: 3.749 min
 Delta R.T.: 0.000 min
 Response: 40528893
 Conc: 16.91 ng/ml

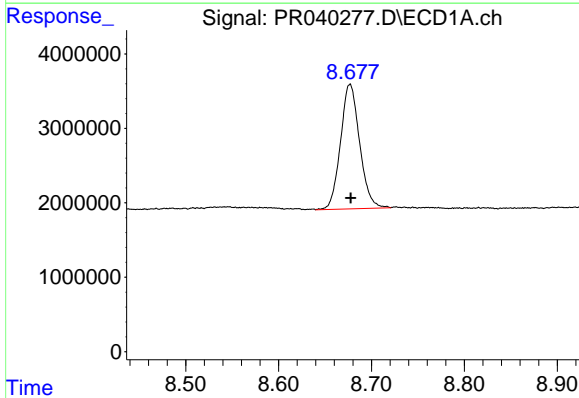
Instrument :
 ECD_R
 ClientSampleId :
 HPPER-3-080819-22

Manual Integrations
 APPROVED

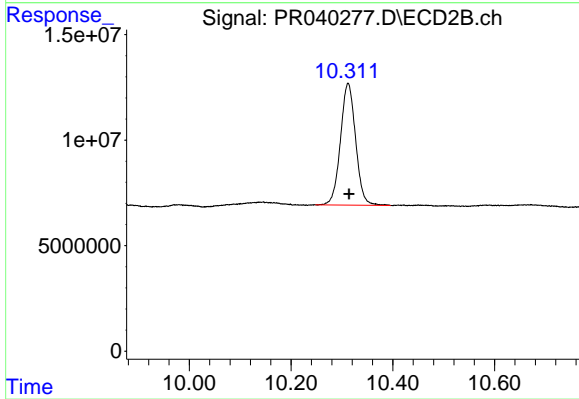
Ankita
 8/14/2019 12:18:52 PM



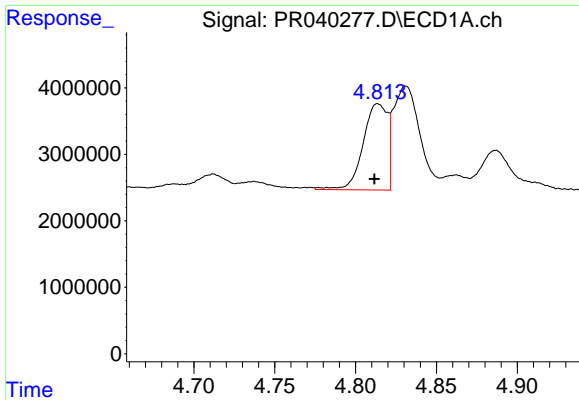
#1 Tetrachloro-m-xylene
 R.T.: 4.591 min
 Delta R.T.: 0.001 min
 Response: 141368059
 Conc: 13.58 ng/ml



#2 Decachlorobiphenyl
 R.T.: 8.677 min
 Delta R.T.: 0.000 min
 Response: 23940124
 Conc: 9.84 ng/ml m



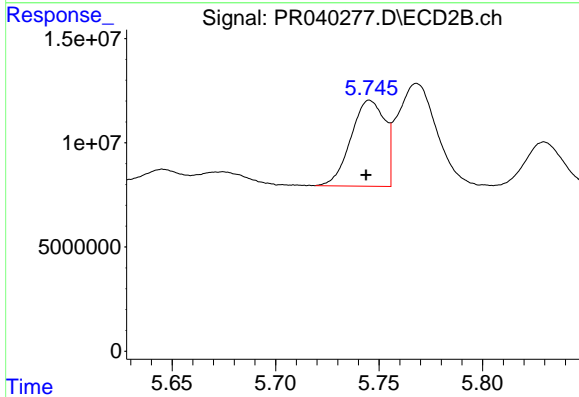
#2 Decachlorobiphenyl
 R.T.: 10.312 min
 Delta R.T.: -0.002 min
 Response: 119387338
 Conc: 13.63 ng/ml



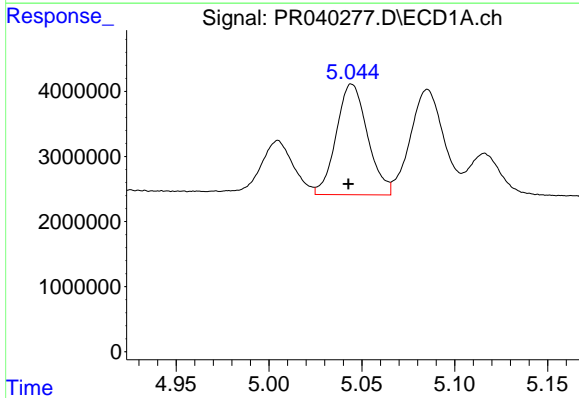
#21 AR-1248-1
 R.T.: 4.814 min
 Delta R.T.: 0.002 min
 Response: 13716368
 Conc: 300.97 ng/ml

Instrument :
 ECD_R
ClientSampleId :
 HPPER-3-080819-22

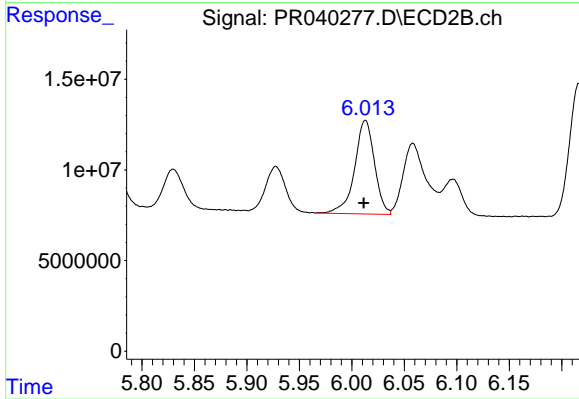
Manual Integrations
APPROVED
 Ankita
 8/14/2019 12:18:52 PM



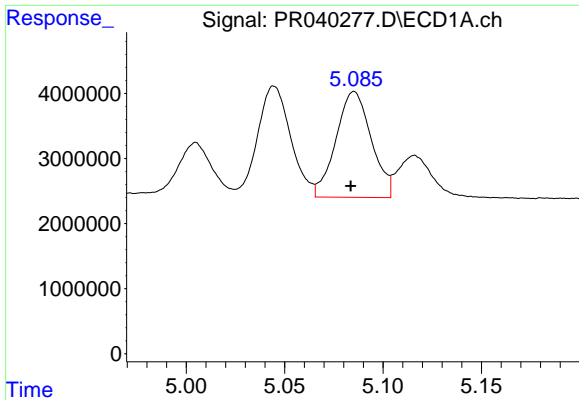
#21 AR-1248-1
 R.T.: 5.745 min
 Delta R.T.: 0.002 min
 Response: 46820198
 Conc: 250.58 ng/ml



#22 AR-1248-2
 R.T.: 5.044 min
 Delta R.T.: 0.002 min
 Response: 19939546
 Conc: 322.40 ng/ml



#22 AR-1248-2
 R.T.: 6.013 min
 Delta R.T.: 0.002 min
 Response: 68003166
 Conc: 279.67 ng/ml

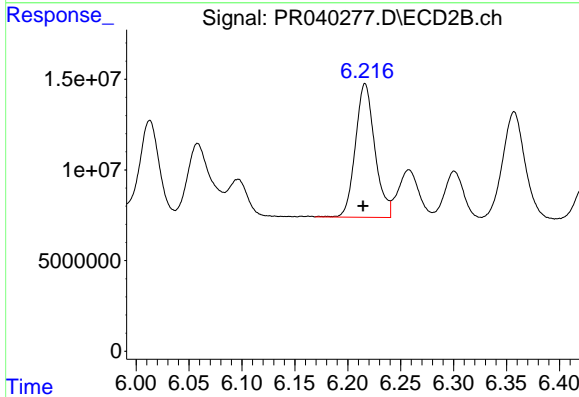


#23 AR-1248-3

R.T.: 5.085 min
 Delta R.T.: 0.002 min
 Response: 20343555
 Conc: 322.26 ng/ml

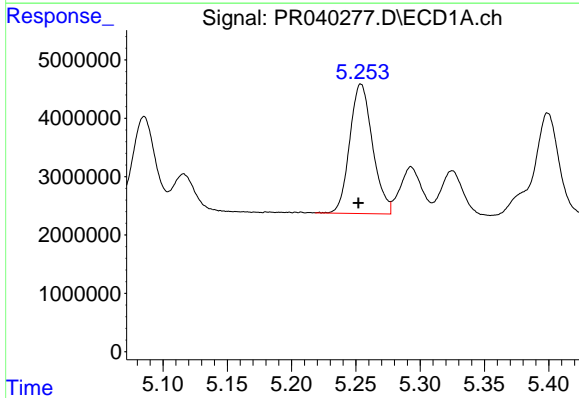
Instrument :
 ECD_R
ClientSampled :
 HPPER-3-080819-22

Manual Integrations
APPROVED
 Ankita
 8/14/2019 12:18:52 PM



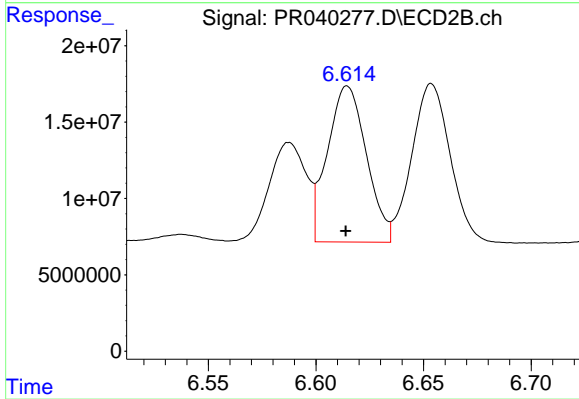
#23 AR-1248-3

R.T.: 6.216 min
 Delta R.T.: 0.002 min
 Response: 94248812
 Conc: 344.71 ng/ml



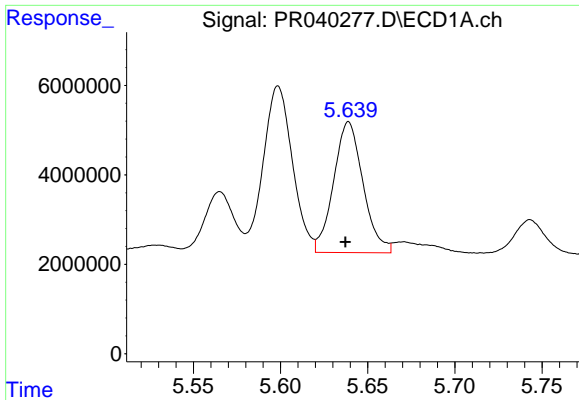
#24 AR-1248-4

R.T.: 5.254 min
 Delta R.T.: 0.002 min
 Response: 27417750
 Conc: 355.69 ng/ml



#24 AR-1248-4

R.T.: 6.615 min
 Delta R.T.: 0.000 min
 Response: 128616170
 Conc: 409.61 ng/ml



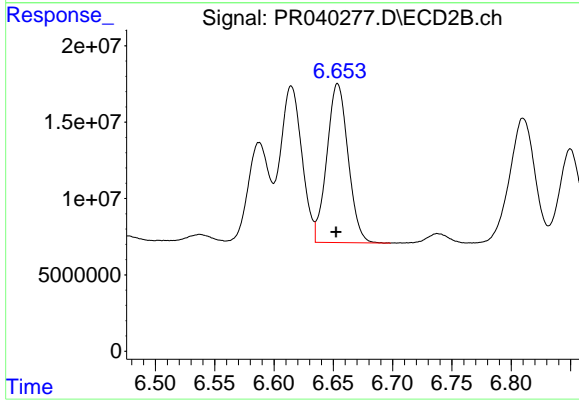
#25 AR-1248-5

R.T.: 5.639 min
Delta R.T.: 0.002 min
Response: 34389589
Conc: 448.89 ng/ml

Instrument :
ECD_R
ClientSampleId :
HPPER-3-080819-22

Manual Integrations
APPROVED

Ankita
8/14/2019 12:18:52 PM



#25 AR-1248-5

R.T.: 6.654 min
Delta R.T.: 0.001 min
Response: 129727765
Conc: 437.72 ng/ml