

Data Path : Z:\pestpcbsrv\HPCHEM1\ECD_R\Data\PR081219\
 Data File : PR040281.D
 Signal(s) : Signal #1: ECD1A.ch Signal #2: ECD2B.ch
 Acq On : 12 Aug 2019 13:26
 Operator : SM\AJ
 Sample : K4276-06
 Misc :
 ALS Vial : 11 Sample Multiplier: 1

Instrument :
 ECD_R
ClientSampleId :
 HPPER-3-080819-48

Manual Integrations
APPROVED
 Ankita
 8/14/2019 12:19:05 PM

Integration File signal 1: autoint1.e
 Integration File signal 2: autoint2.e
 Quant Time: Aug 12 15:27:12 2019
 Quant Method : Z:\pestpcbsrv\HPCHEM1\ECD_R\Method\PR081019.M
 Quant Title : GC EXTRACTABLES
 QLast Update : Sat Aug 10 07:38:17 2019
 Response via : Initial Calibration
 Integrator: ChemStation

Volume Inj. : 2 µl
 Signal #1 Phase : ZB-MR1 Signal #2 Phase: ZB-MR2
 Signal #1 Info : 30Mx0.32mmx 0.50µ Signal #2 Info : 30M x 0.32mm x 0.25µm

Compound	RT#1	RT#2	Resp#1	Resp#2	ng/ml	ng/ml

System Monitoring Compounds						
1) SA Tetrachlo...	3.749	4.592	46232283	206.1E6	19.292m	19.796
2) SA Decachlor...	8.675	10.312	33162921	141.0E6	13.628	16.104
Target Compounds						
21) L5 AR-1248-1	4.814	5.746	14924091	57651746	327.473m	308.550
22) L5 AR-1248-2	5.045	6.013	20777692	84003657	335.952	345.472
23) L5 AR-1248-3	5.085	6.216	23695403	106.4E6	375.359	389.292
24) L5 AR-1248-4	5.254	6.615	30927920	143.4E6	401.228	456.709
25) L5 AR-1248-5	5.638	6.654	43612450	150.2E6	569.277m	506.914

(f)=RT Delta > 1/2 Window (#)=Amounts differ by > 25% (m)=manual int.

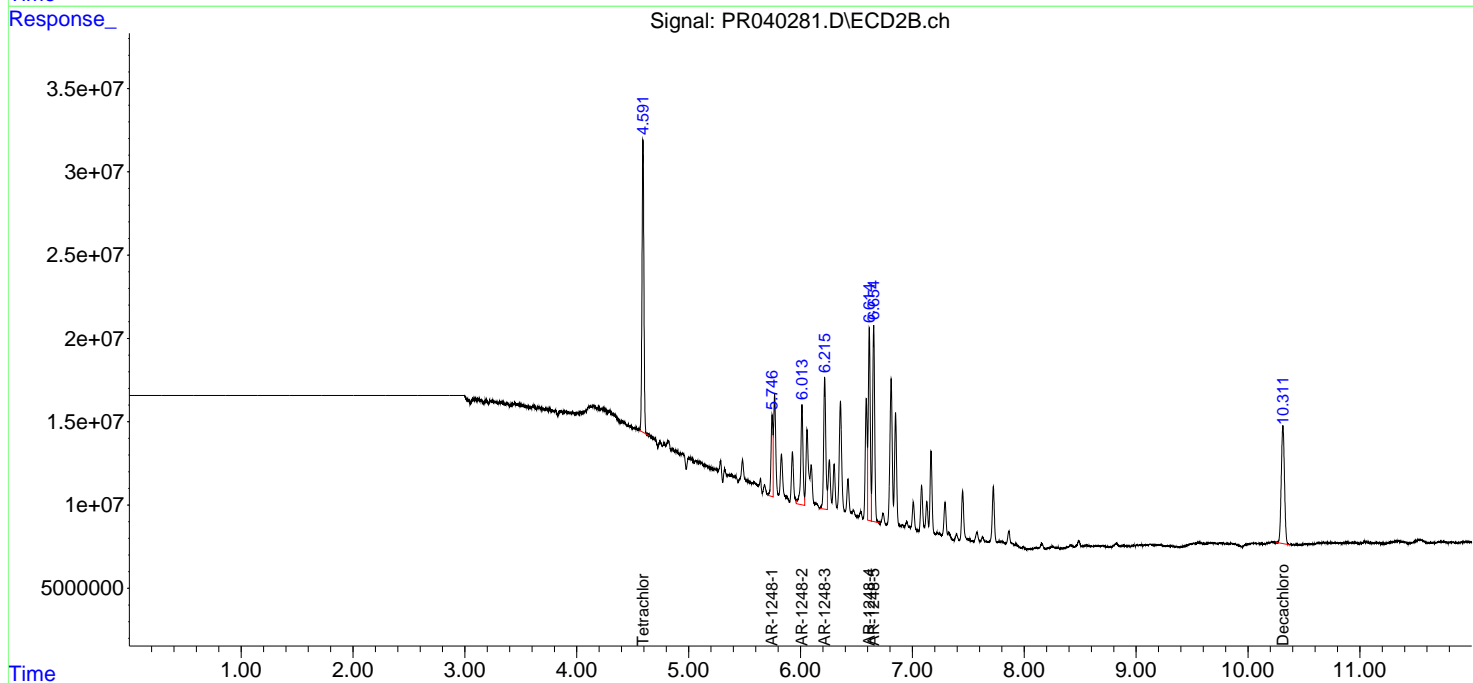
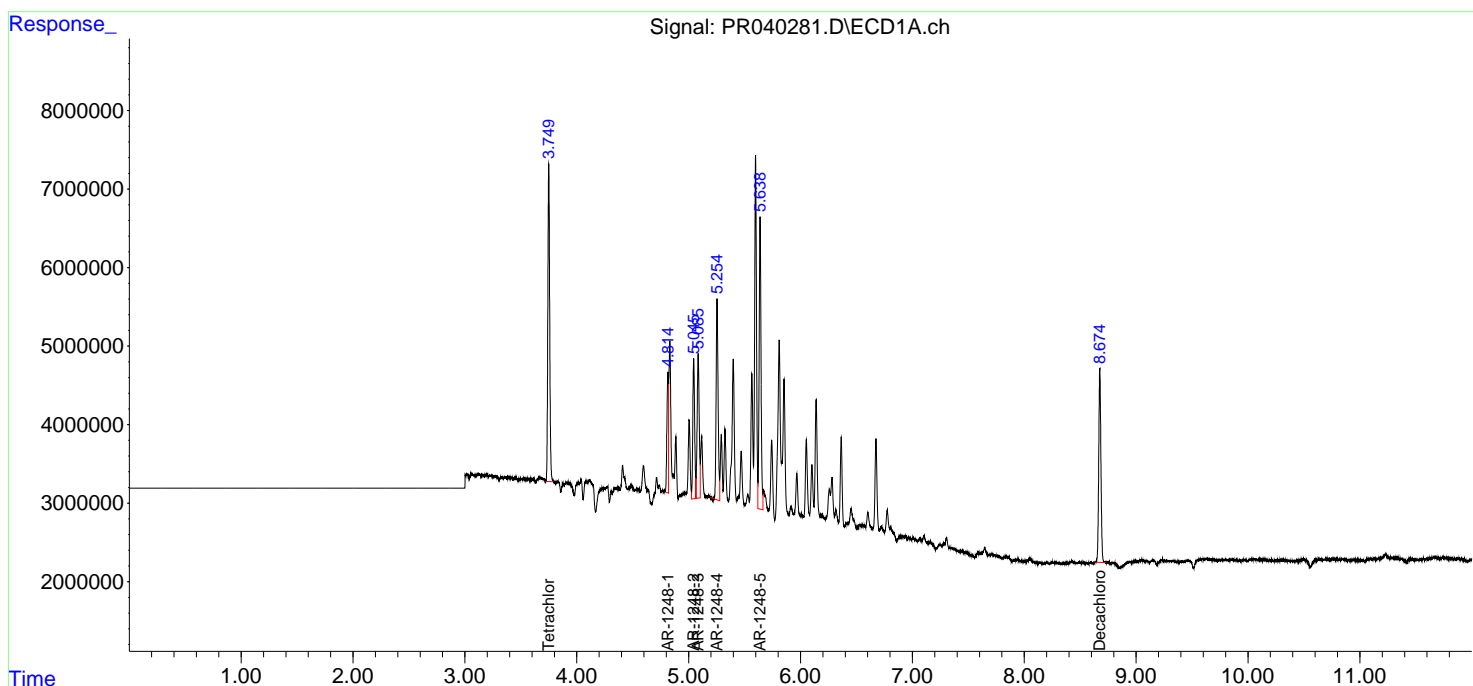
Data Path : Z:\pestpcbsrv\HPCHEM1\ECD_R\Data\PR081219\
 Data File : PR040281.D
 Signal(s) : Signal #1: ECD1A.ch Signal #2: ECD2B.ch
 Acq On : 12 Aug 2019 13:26
 Operator : SM\AJ
 Sample : K4276-06
 Misc :
 ALS Vial : 11 Sample Multiplier: 1

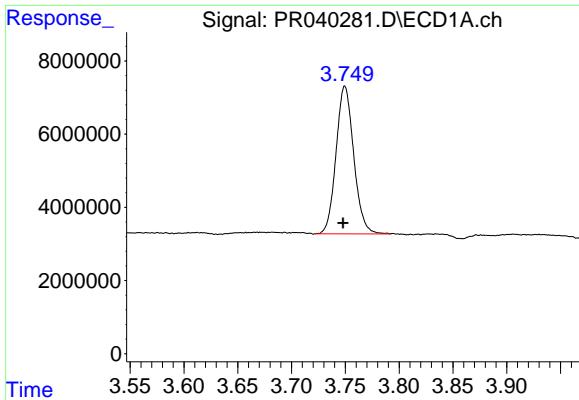
Instrument :
 ECD_R
ClientSampled :
 HPPER-3-080819-48

Manual Integrations
APPROVED
 Ankita
 8/14/2019 12:19:05 PM

Integration File signal 1: autoint1.e
 Integration File signal 2: autoint2.e
 Quant Time: Aug 12 15:27:12 2019
 Quant Method : Z:\pestpcbsrv\HPCHEM1\ECD_R\Method\PR081019.M
 Quant Title : GC EXTRACTABLES
 QLast Update : Sat Aug 10 07:38:17 2019
 Response via : Initial Calibration
 Integrator: ChemStation

Volume Inj. : 2 µl
 Signal #1 Phase : ZB-MR1 Signal #2 Phase: ZB-MR2
 Signal #1 Info : 30Mx0.32mmx 0.50µ Signal #2 Info : 30M x 0.32mm x 0.25µm

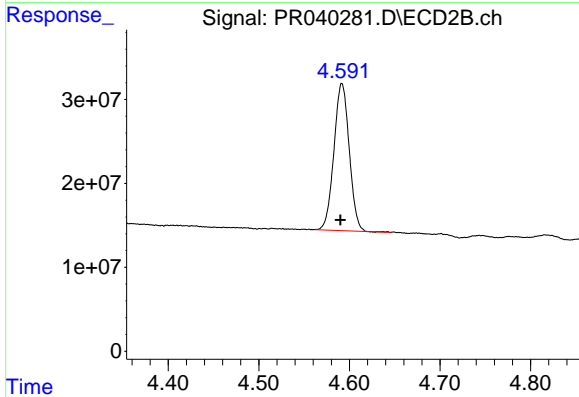




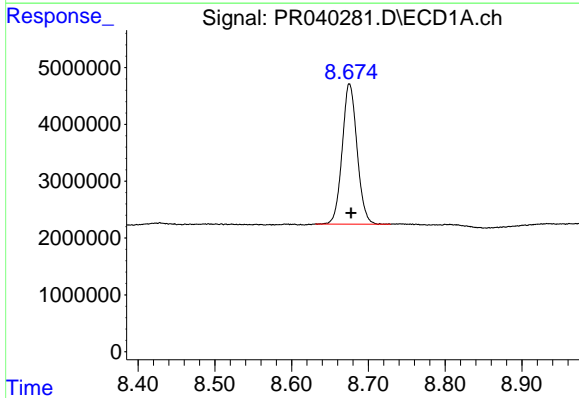
#1 Tetrachloro-m-xylene
 R.T.: 3.749 min
 Delta R.T.: 0.000 min
 Response: 46232283
 Conc: 19.29 ng/ml m

Instrument :
 ECD_R
ClientSampleId :
 HPPER-3-080819-48

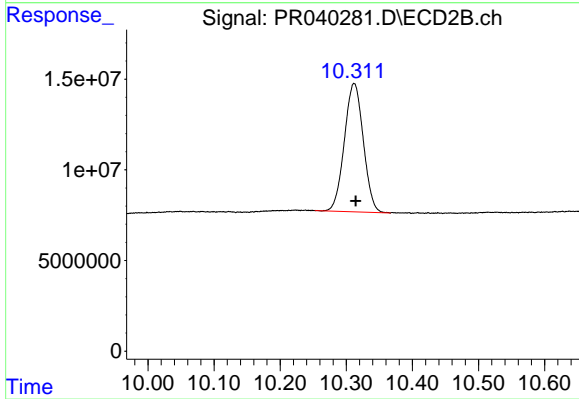
Manual Integrations
APPROVED
 Ankita
 8/14/2019 12:19:05 PM



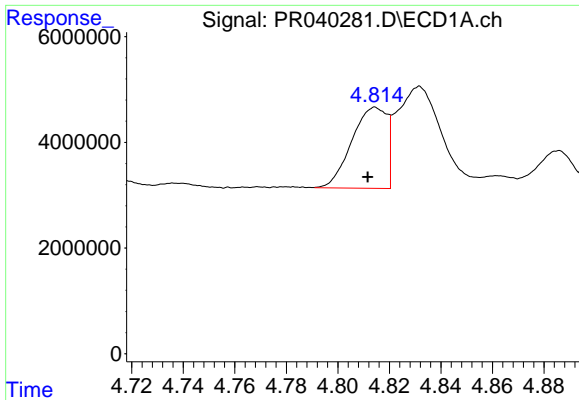
#1 Tetrachloro-m-xylene
 R.T.: 4.592 min
 Delta R.T.: 0.002 min
 Response: 206097116
 Conc: 19.80 ng/ml



#2 Decachlorobiphenyl
 R.T.: 8.675 min
 Delta R.T.: -0.002 min
 Response: 33162921
 Conc: 13.63 ng/ml



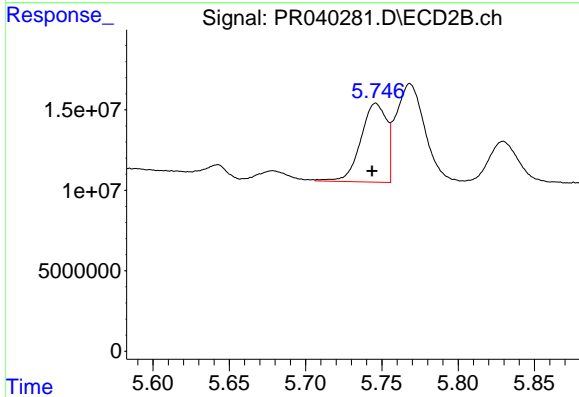
#2 Decachlorobiphenyl
 R.T.: 10.312 min
 Delta R.T.: -0.002 min
 Response: 141037011
 Conc: 16.10 ng/ml



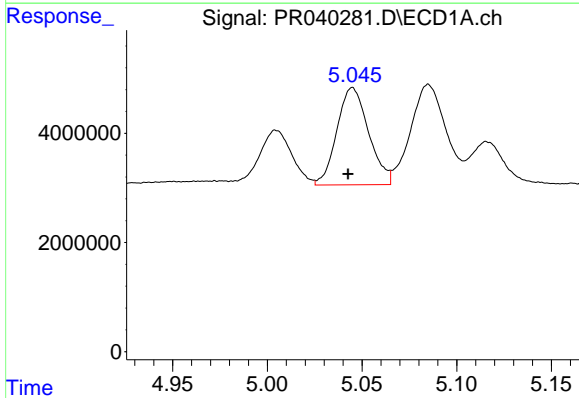
#21 AR-1248-1
 R.T.: 4.814 min
 Delta R.T.: 0.003 min
 Response: 14924091
 Conc: 327.47 ng/ml m

Instrument :
 ECD_R
ClientSampleId :
 HPPER-3-080819-48

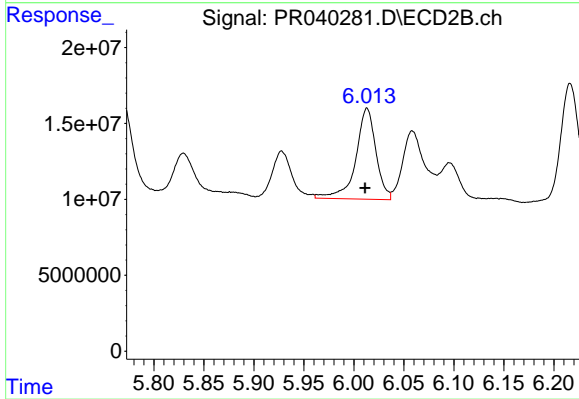
Manual Integrations
APPROVED
 Ankita
 8/14/2019 12:19:05 PM



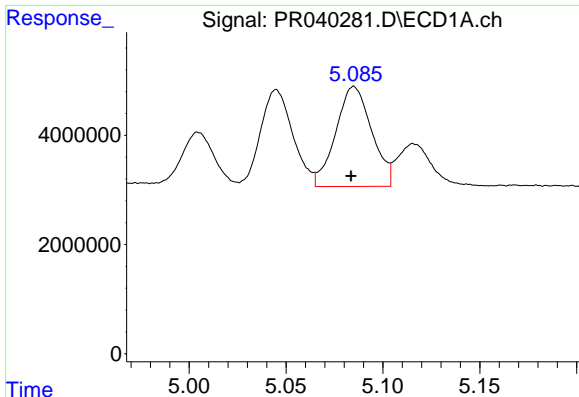
#21 AR-1248-1
 R.T.: 5.746 min
 Delta R.T.: 0.002 min
 Response: 57651746
 Conc: 308.55 ng/ml



#22 AR-1248-2
 R.T.: 5.045 min
 Delta R.T.: 0.002 min
 Response: 20777692
 Conc: 335.95 ng/ml



#22 AR-1248-2
 R.T.: 6.013 min
 Delta R.T.: 0.002 min
 Response: 84003657
 Conc: 345.47 ng/ml



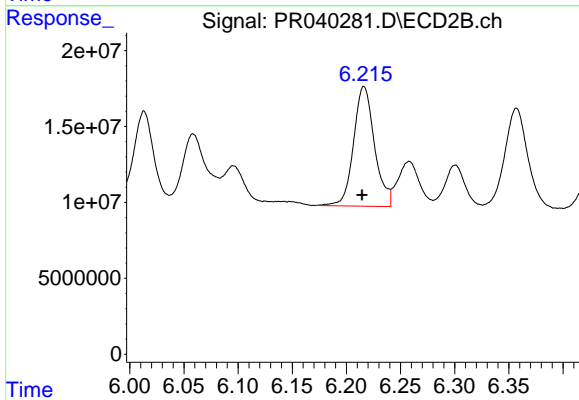
#23 AR-1248-3

R.T.: 5.085 min
 Delta R.T.: 0.001 min
 Response: 23695403
 Conc: 375.36 ng/ml

Instrument :
 ECD_R
 ClientSampleId :
 HPPER-3-080819-48

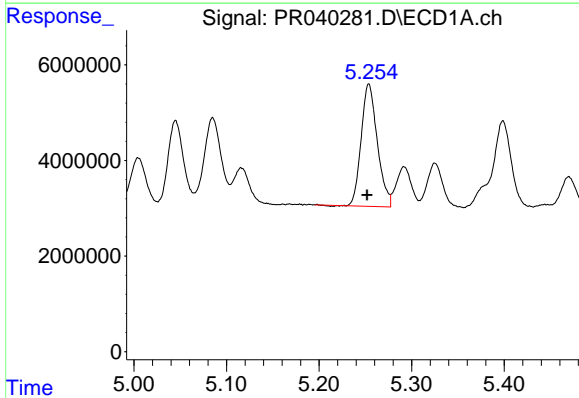
Manual Integrations
 APPROVED

Ankita
 8/14/2019 12:19:05 PM



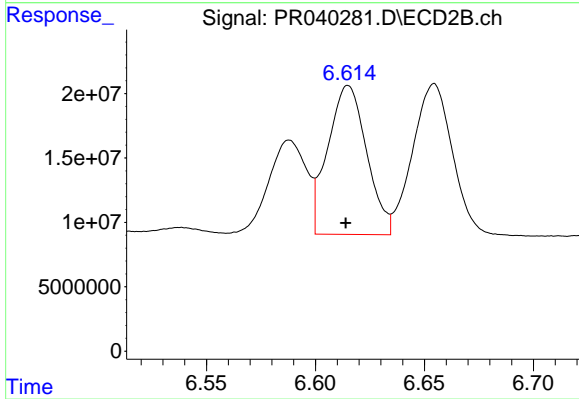
#23 AR-1248-3

R.T.: 6.216 min
 Delta R.T.: 0.002 min
 Response: 106437022
 Conc: 389.29 ng/ml



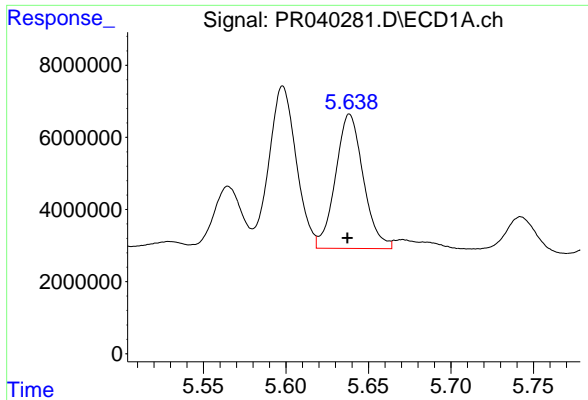
#24 AR-1248-4

R.T.: 5.254 min
 Delta R.T.: 0.002 min
 Response: 30927920
 Conc: 401.23 ng/ml



#24 AR-1248-4

R.T.: 6.615 min
 Delta R.T.: 0.001 min
 Response: 143404624
 Conc: 456.71 ng/ml



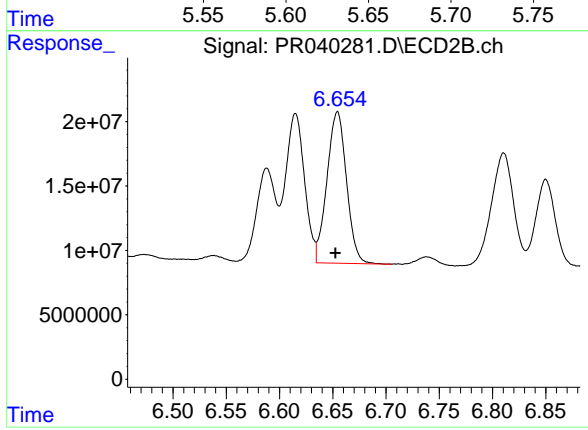
#25 AR-1248-5

R.T.: 5.638 min
Delta R.T.: 0.000 min
Response: 43612450
Conc: 569.28 ng/ml m

Instrument :
ECD_R
ClientSampleId :
HPPER-3-080819-48

Manual Integrations
APPROVED

Ankita
8/14/2019 12:19:05 PM



#25 AR-1248-5

R.T.: 6.654 min
Delta R.T.: 0.002 min
Response: 150235746
Conc: 506.91 ng/ml