

Data Path : Z:\pestpcbsrv\HPCHEM1\ECD_R\Data\PR081219\
 Data File : PR040285.D
 Signal(s) : Signal #1: ECD1A.ch Signal #2: ECD2B.ch
 Acq On : 12 Aug 2019 14:25
 Operator : SM\AJ
 Sample : AR1660CCC500
 Misc :
 ALS Vial : 3 Sample Multiplier: 1

Instrument :
 ECD_R
ClientSampleId :
 AR1660CCC500

Manual Integrations
APPROVED
 Ankita
 8/14/2019 12:19:19 PM

Integration File signal 1: autoint1.e
 Integration File signal 2: autoint2.e
 Quant Time: Aug 12 15:30:06 2019
 Quant Method : Z:\pestpcbsrv\HPCHEM1\ECD_R\Method\PR081019.M
 Quant Title : GC EXTRACTABLES
 QLast Update : Sat Aug 10 07:38:17 2019
 Response via : Initial Calibration
 Integrator: ChemStation

Volume Inj. : 2 µl
 Signal #1 Phase : ZB-MR1 Signal #2 Phase: ZB-MR2
 Signal #1 Info : 30Mx0.32mmx 0.50µ Signal #2 Info : 30M x 0.32mm x 0.25µm

Compound	RT#1	RT#2	Resp#1	Resp#2	ng/ml	ng/ml

System Monitoring Compounds						
1) SA Tetrachlo...	3.749	4.592	128.8E6	577.8E6	53.750	55.498
2) SA Decachlor...	8.676	10.311	116.2E6	489.8E6	47.735	55.933
Target Compounds						
3) L1 AR-1016-1	4.814	5.745	41441079	167.9E6	532.696	535.775
4) L1 AR-1016-2	4.831	5.768	71723026	252.2E6	572.409	538.632
5) L1 AR-1016-3	5.004	5.830	34780024	143.9E6	570.107	529.984
6) L1 AR-1016-4	5.044	5.929	26913628	117.8E6	560.913	528.635
7) L1 AR-1016-5	5.253	6.217	35085761	109.2E6	563.926m	553.032
31) L7 AR-1260-1	6.266	7.327	58328698	168.6E6	507.011m	461.534
32) L7 AR-1260-2	6.451	7.579	71237111	206.9E6	494.715m	454.698
33) L7 AR-1260-3	6.602	7.934	65888525	155.6E6	487.975m	452.482
34) L7 AR-1260-4	7.067	8.163	53380008	172.6E6	472.779	439.091
35) L7 AR-1260-5	7.306	8.488	129.5E6	383.7E6	459.325	447.885

(f)=RT Delta > 1/2 Window (#)=Amounts differ by > 25% (m)=manual int.

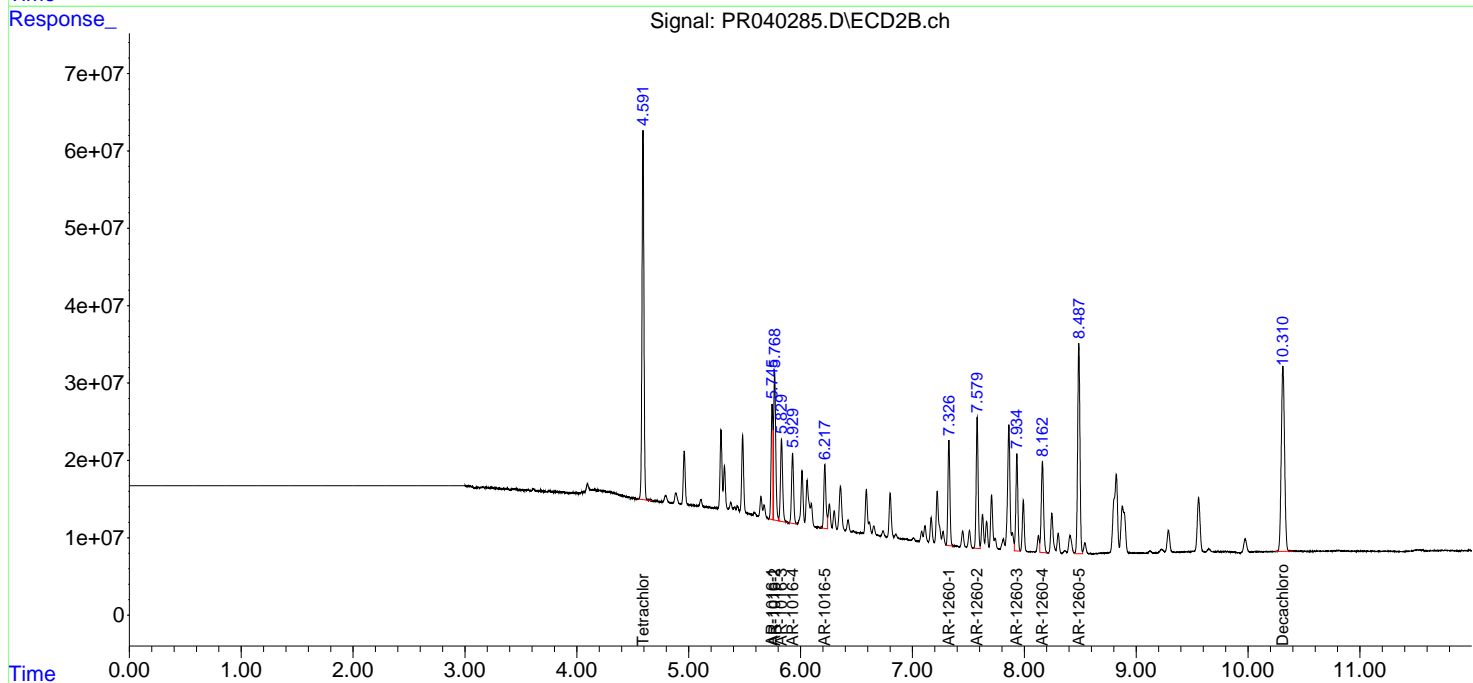
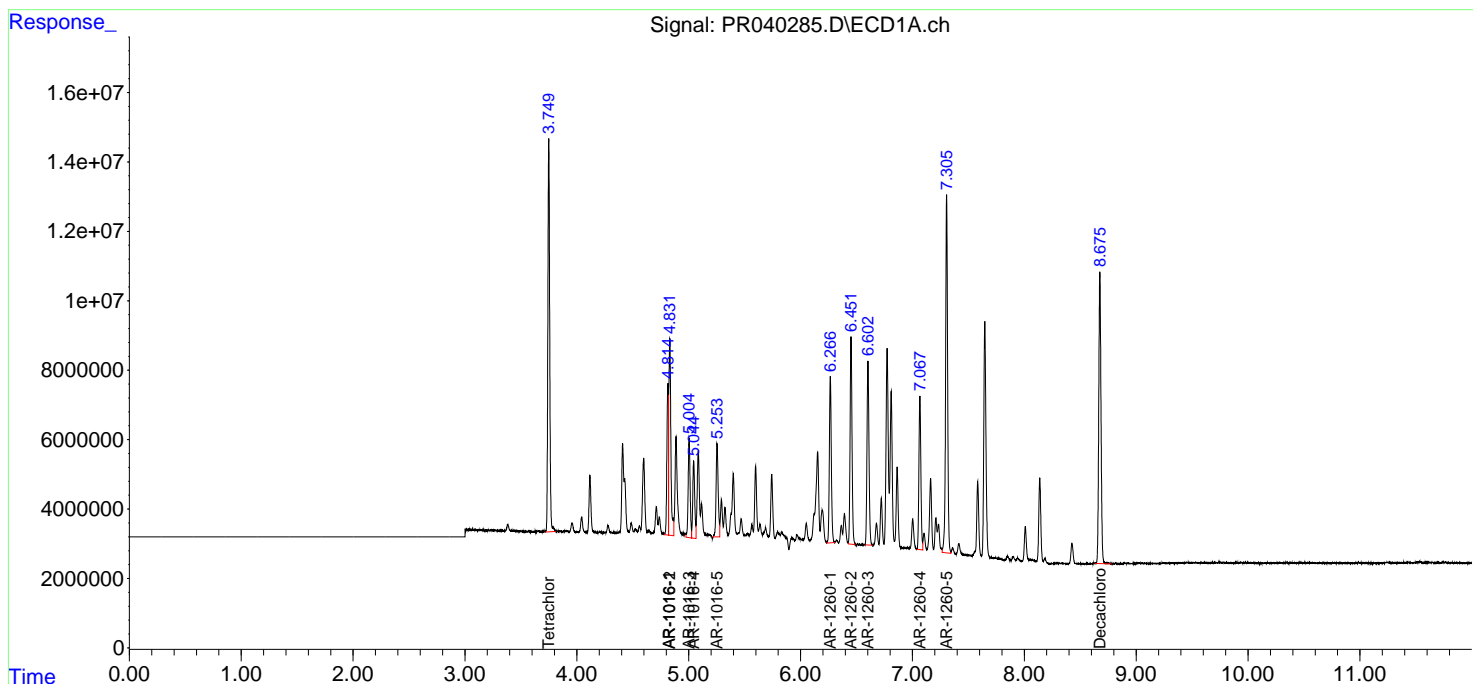
Data Path : Z:\pestpcbsrv\HPCHEM1\ECD_R\Data\PR081219\
 Data File : PR040285.D
 Signal(s) : Signal #1: ECD1A.ch Signal #2: ECD2B.ch
 Acq On : 12 Aug 2019 14:25
 Operator : SM\AJ
 Sample : AR1660CCC500
 Misc :
 ALS Vial : 3 Sample Multiplier: 1

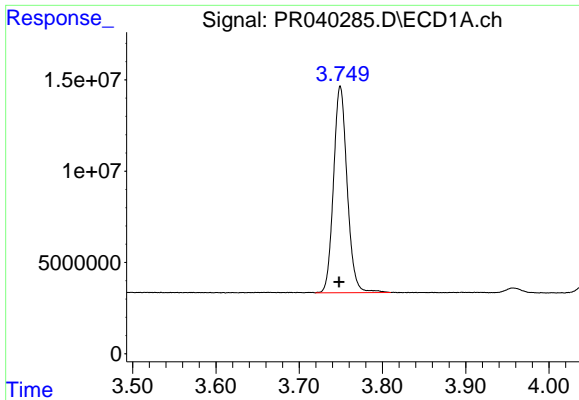
Instrument :
 ECD_R
Client Sampled :
 AR1660CCC500

Manual Integrations
APPROVED
 Ankita
 8/14/2019 12:19:19 PM

Integration File signal 1: autoint1.e
 Integration File signal 2: autoint2.e
 Quant Time: Aug 12 15:30:06 2019
 Quant Method : Z:\pestpcbsrv\HPCHEM1\ECD_R\Method\PR081019.M
 Quant Title : GC EXTRACTABLES
 QLast Update : Sat Aug 10 07:38:17 2019
 Response via : Initial Calibration
 Integrator: ChemStation

Volume Inj. : 2 µl
 Signal #1 Phase : ZB-MR1 Signal #2 Phase: ZB-MR2
 Signal #1 Info : 30Mx0.32mmx 0.50µm Signal #2 Info : 30M x 0.32mm x 0.25µm

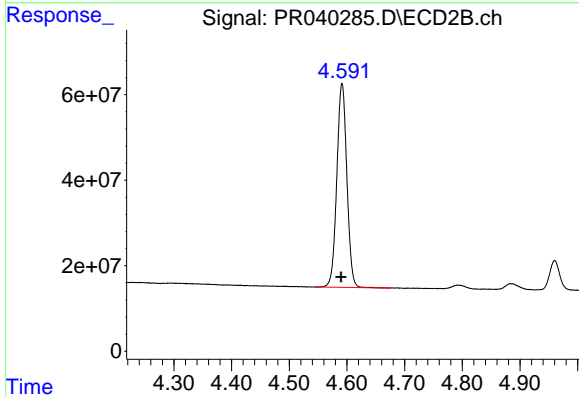




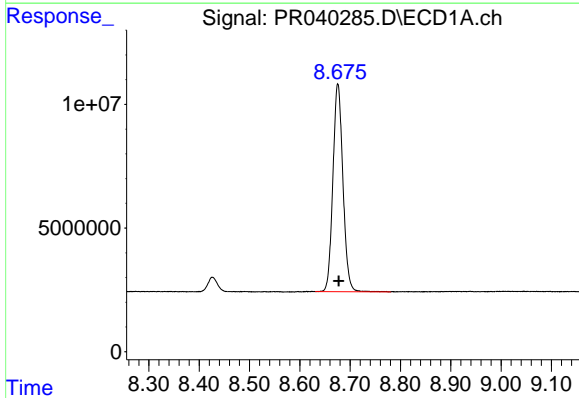
#1 Tetrachloro-m-xylene
 R.T.: 3.749 min
 Delta R.T.: 0.001 min
 Response: 128809132
 Conc: 53.75 ng/ml

Instrument :
 ECD_R
ClientSampleId :
 AR1660CCC500

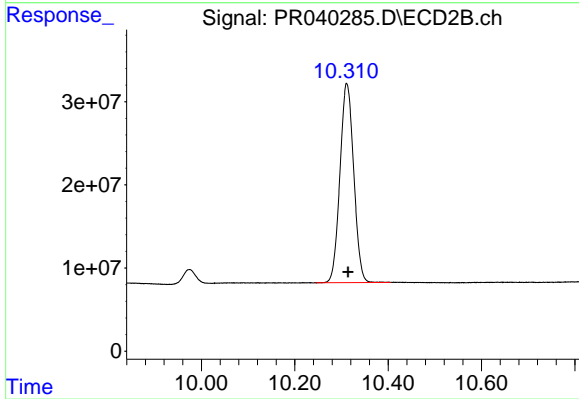
Manual Integrations
APPROVED
 Ankita
 8/14/2019 12:19:19 PM



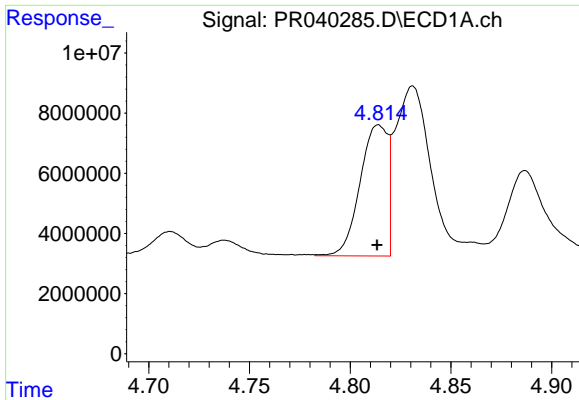
#1 Tetrachloro-m-xylene
 R.T.: 4.592 min
 Delta R.T.: 0.002 min
 Response: 577799574
 Conc: 55.50 ng/ml



#2 Decachlorobiphenyl
 R.T.: 8.676 min
 Delta R.T.: -0.002 min
 Response: 116161982
 Conc: 47.74 ng/ml



#2 Decachlorobiphenyl
 R.T.: 10.311 min
 Delta R.T.: -0.003 min
 Response: 489842811
 Conc: 55.93 ng/ml

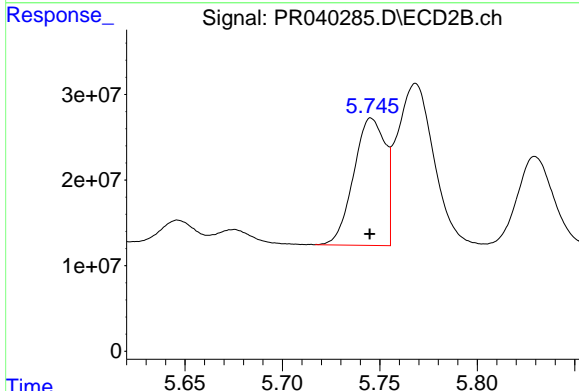


#3 AR-1016-1

R.T.: 4.814 min
 Delta R.T.: 0.000 min
 Response: 41441079
 Conc: 532.70 ng/ml

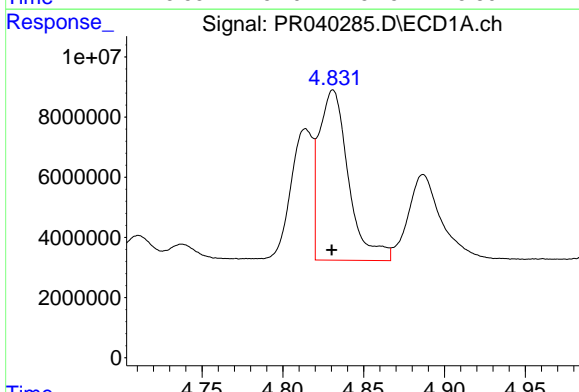
Instrument :
 ECD_R
ClientSampled :
 AR1660CCC500

Manual Integrations
APPROVED
 Ankita
 8/14/2019 12:19:19 PM



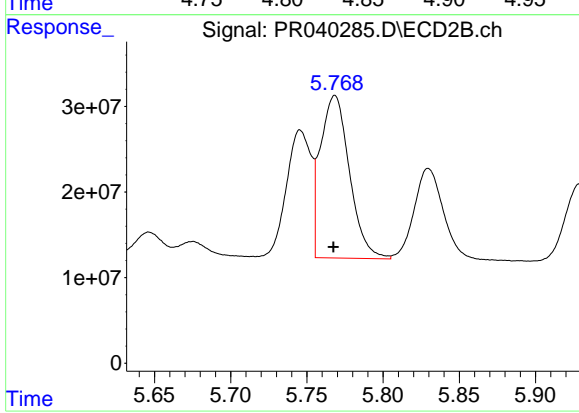
#3 AR-1016-1

R.T.: 5.745 min
 Delta R.T.: 0.000 min
 Response: 167855109
 Conc: 535.78 ng/ml



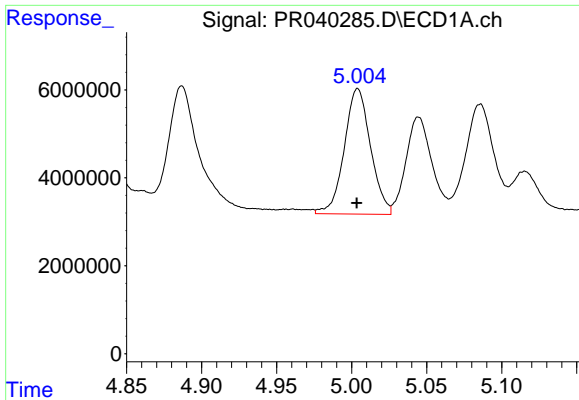
#4 AR-1016-2

R.T.: 4.831 min
 Delta R.T.: 0.000 min
 Response: 71723026
 Conc: 572.41 ng/ml



#4 AR-1016-2

R.T.: 5.768 min
 Delta R.T.: 0.000 min
 Response: 252244098
 Conc: 538.63 ng/ml

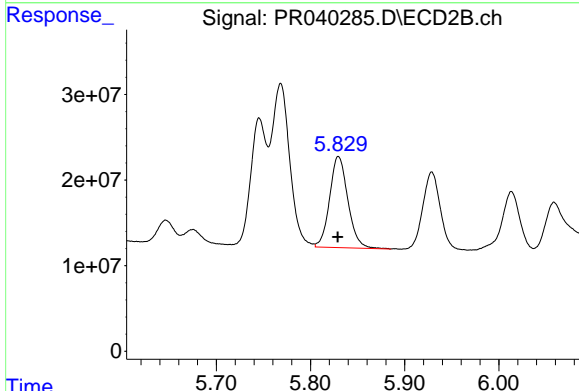


#5 AR-1016-3

R.T.: 5.004 min
 Delta R.T.: 0.000 min
 Response: 34780024
 Conc: 570.11 ng/ml

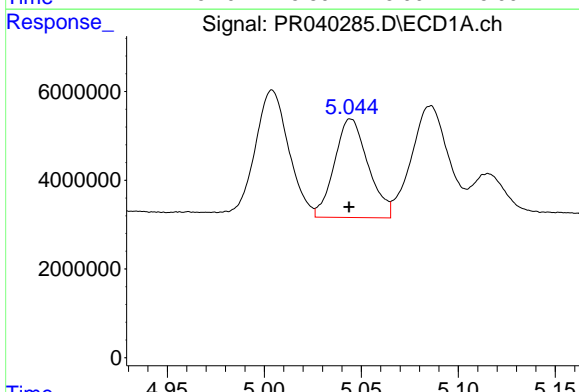
Instrument :
 ECD_R
ClientSampled :
 AR1660CCC500

Manual Integrations
APPROVED
 Ankita
 8/14/2019 12:19:19 PM



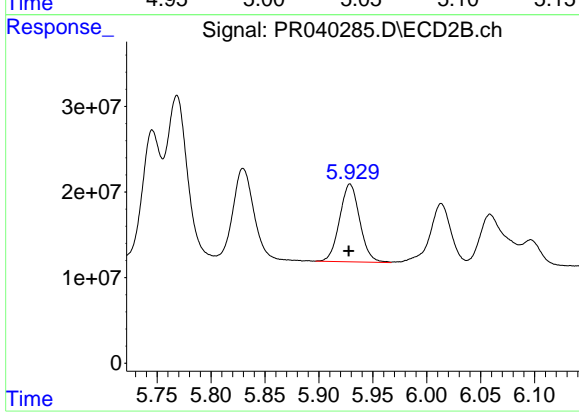
#5 AR-1016-3

R.T.: 5.830 min
 Delta R.T.: 0.000 min
 Response: 143898233
 Conc: 529.98 ng/ml



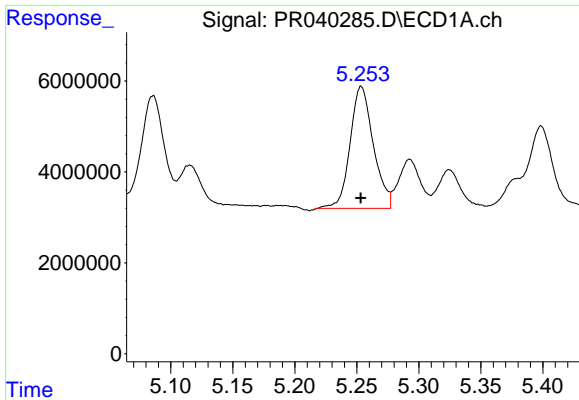
#6 AR-1016-4

R.T.: 5.044 min
 Delta R.T.: 0.000 min
 Response: 26913628
 Conc: 560.91 ng/ml



#6 AR-1016-4

R.T.: 5.929 min
 Delta R.T.: 0.001 min
 Response: 117770639
 Conc: 528.64 ng/ml

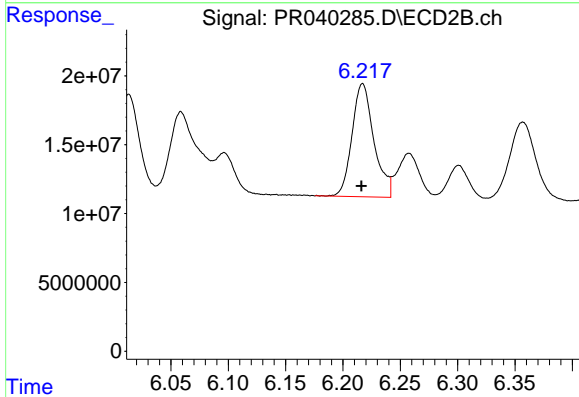


#7 AR-1016-5

R.T.: 5.253 min
 Delta R.T.: 0.000 min
 Response: 35085761
 Conc: 563.93 ng/ml m

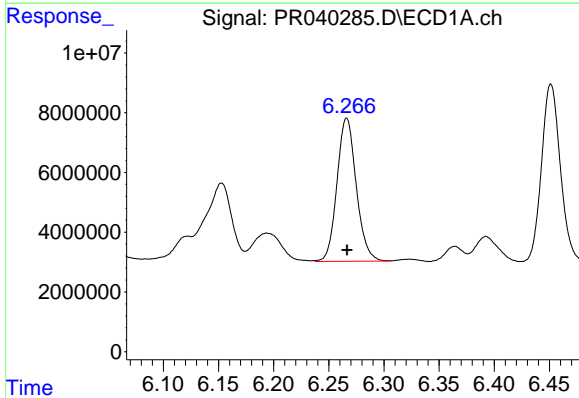
Instrument :
 ECD_R
ClientSampleId :
 AR1660CCC500

Manual Integrations
APPROVED
 Ankita
 8/14/2019 12:19:19 PM



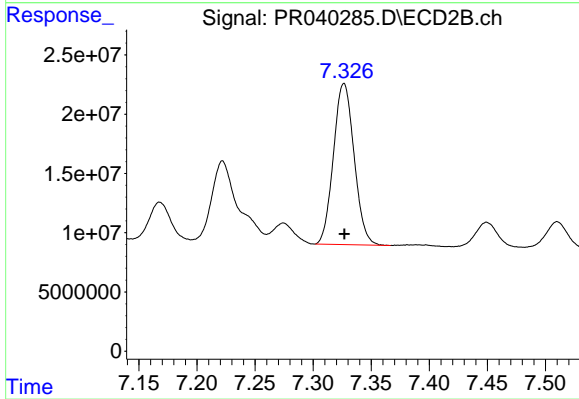
#7 AR-1016-5

R.T.: 6.217 min
 Delta R.T.: 0.001 min
 Response: 109220214
 Conc: 553.03 ng/ml



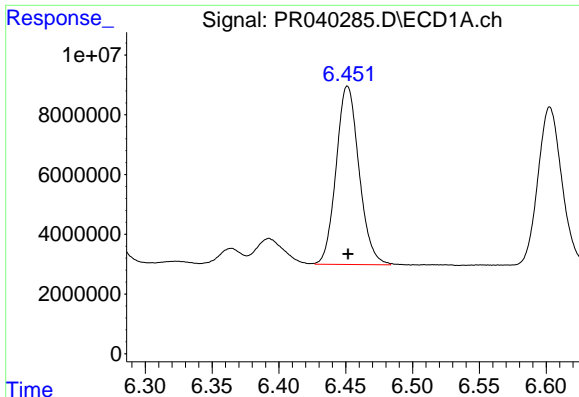
#31 AR-1260-1

R.T.: 6.266 min
 Delta R.T.: 0.000 min
 Response: 58328698
 Conc: 507.01 ng/ml m



#31 AR-1260-1

R.T.: 7.327 min
 Delta R.T.: 0.000 min
 Response: 168615046
 Conc: 461.53 ng/ml

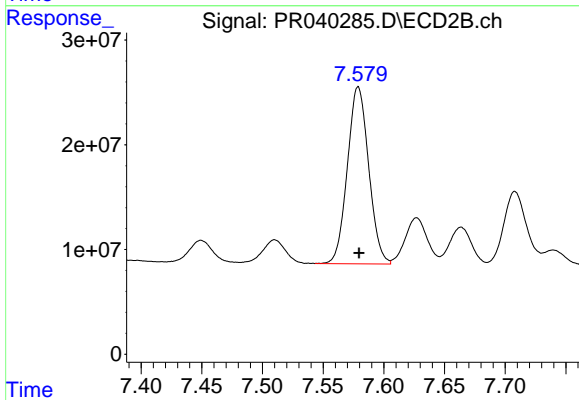


#32 AR-1260-2

R.T.: 6.451 min
 Delta R.T.: 0.000 min
 Response: 71237111
 Conc: 494.72 ng/ml m

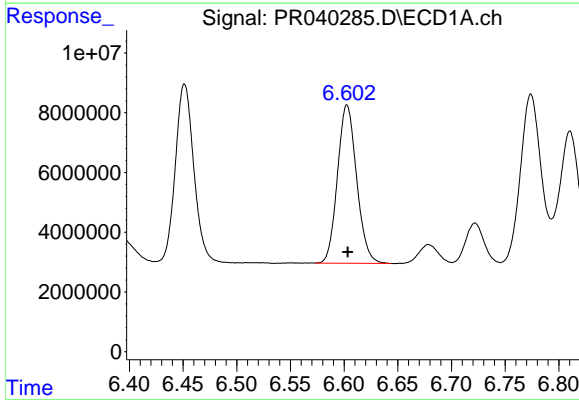
Instrument :
 ECD_R
ClientSampled :
 AR1660CCC500

Manual Integrations
APPROVED
 Ankita
 8/14/2019 12:19:19 PM



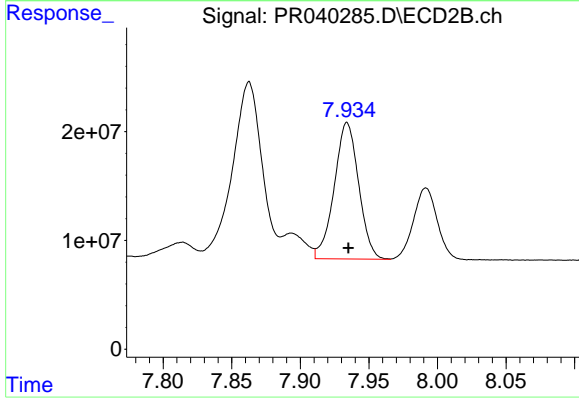
#32 AR-1260-2

R.T.: 7.579 min
 Delta R.T.: 0.000 min
 Response: 206867000
 Conc: 454.70 ng/ml



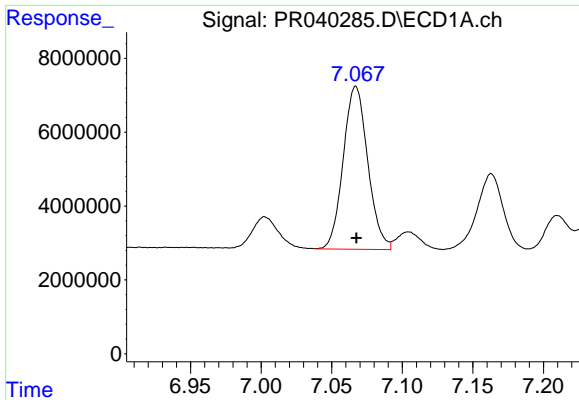
#33 AR-1260-3

R.T.: 6.602 min
 Delta R.T.: 0.000 min
 Response: 65888525
 Conc: 487.97 ng/ml m



#33 AR-1260-3

R.T.: 7.934 min
 Delta R.T.: 0.000 min
 Response: 155612965
 Conc: 452.48 ng/ml

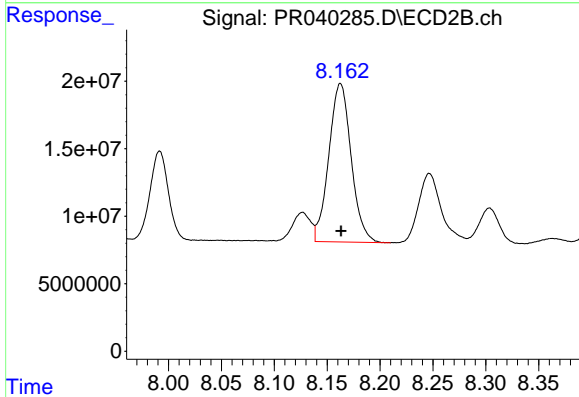


#34 AR-1260-4

R.T.: 7.067 min
 Delta R.T.: 0.000 min
 Response: 53380008
 Conc: 472.78 ng/ml

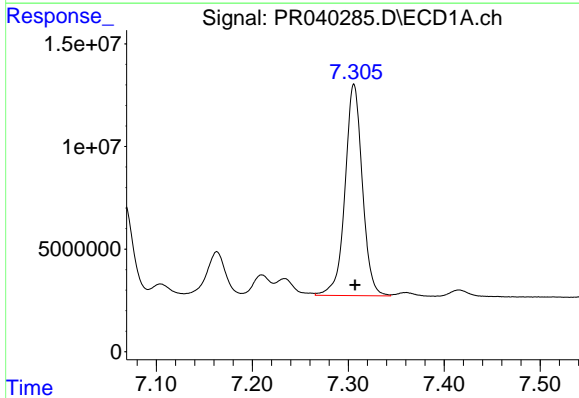
Instrument :
 ECD_R
 ClientSampleId :
 AR1660CCC500

Manual Integrations
 APPROVED
 Ankita
 8/14/2019 12:19:19 PM



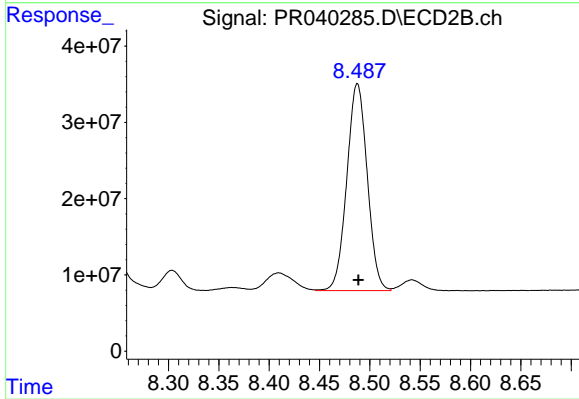
#34 AR-1260-4

R.T.: 8.163 min
 Delta R.T.: 0.000 min
 Response: 172635295
 Conc: 439.09 ng/ml



#35 AR-1260-5

R.T.: 7.306 min
 Delta R.T.: -0.001 min
 Response: 129466020
 Conc: 459.33 ng/ml



#35 AR-1260-5

R.T.: 8.488 min
 Delta R.T.: -0.001 min
 Response: 383698199
 Conc: 447.89 ng/ml