

Data Path : Z:\pestpcbsrv\HPCHEM1\ECD_R\Data\PR081219\
 Data File : PR040287.D
 Signal(s) : Signal #1: ECD1A.ch Signal #2: ECD2B.ch
 Acq On : 12 Aug 2019 14:59
 Operator : SM\AJ
 Sample : PB122161BS
 Misc :
 ALS Vial : 15 Sample Multiplier: 1

Instrument :
 ECD_R
 ClientSampleId :
 PB122161BS

Manual Integrations
 APPROVED

Ankita
 8/14/2019 12:19:20 PM

Integration File signal 1: autoint1.e
 Integration File signal 2: autoint2.e
 Quant Time: Aug 12 16:44:13 2019
 Quant Method : Z:\pestpcbsrv\HPCHEM1\ECD_R\Method\PR081019.M
 Quant Title : GC EXTRACTABLES
 QLast Update : Sat Aug 10 07:38:17 2019
 Response via : Initial Calibration
 Integrator: ChemStation

Volume Inj. : 2 µl
 Signal #1 Phase : ZB-MR1 Signal #2 Phase: ZB-MR2
 Signal #1 Info : 30Mx0.32mmx 0.50µ Signal #2 Info : 30M x 0.32mm x 0.25µm

Compound	RT#1	RT#2	Resp#1	Resp#2	ng/ml	ng/ml

System Monitoring Compounds						
1) SA Tetrachlo...	3.750	4.591	56430843	256.4E6	23.548	24.627
2) SA Decachlor...	8.676	10.311	43123170	182.0E6	17.721	20.785
Target Compounds						
3) L1 AR-1016-1	4.814	5.745	18493670	75983411	237.723	242.531
4) L1 AR-1016-2	4.832	5.768	31532415	118.0E6	251.655	251.894
5) L1 AR-1016-3	5.004	5.829	14264563	69325511	233.822	255.329m
6) L1 AR-1016-4	5.045	5.928	10784881	54936739	224.770	246.594
7) L1 AR-1016-5	5.254	6.217	14604384	47415067	234.733	240.084
31) L7 AR-1260-1	6.267	7.326	28944933	83781517	251.598	229.327
32) L7 AR-1260-2	6.451	7.578	34684718	100.9E6	240.872	221.809
33) L7 AR-1260-3	6.603	7.933	31595165	59364828	233.996	172.617 #
34) L7 AR-1260-4	7.067	8.162	22480564	73652119	199.107	187.331
35) L7 AR-1260-5	7.306	8.487	54502660	151.8E6	193.367	177.217

(f)=RT Delta > 1/2 Window (#)=Amounts differ by > 25% (m)=manual int.

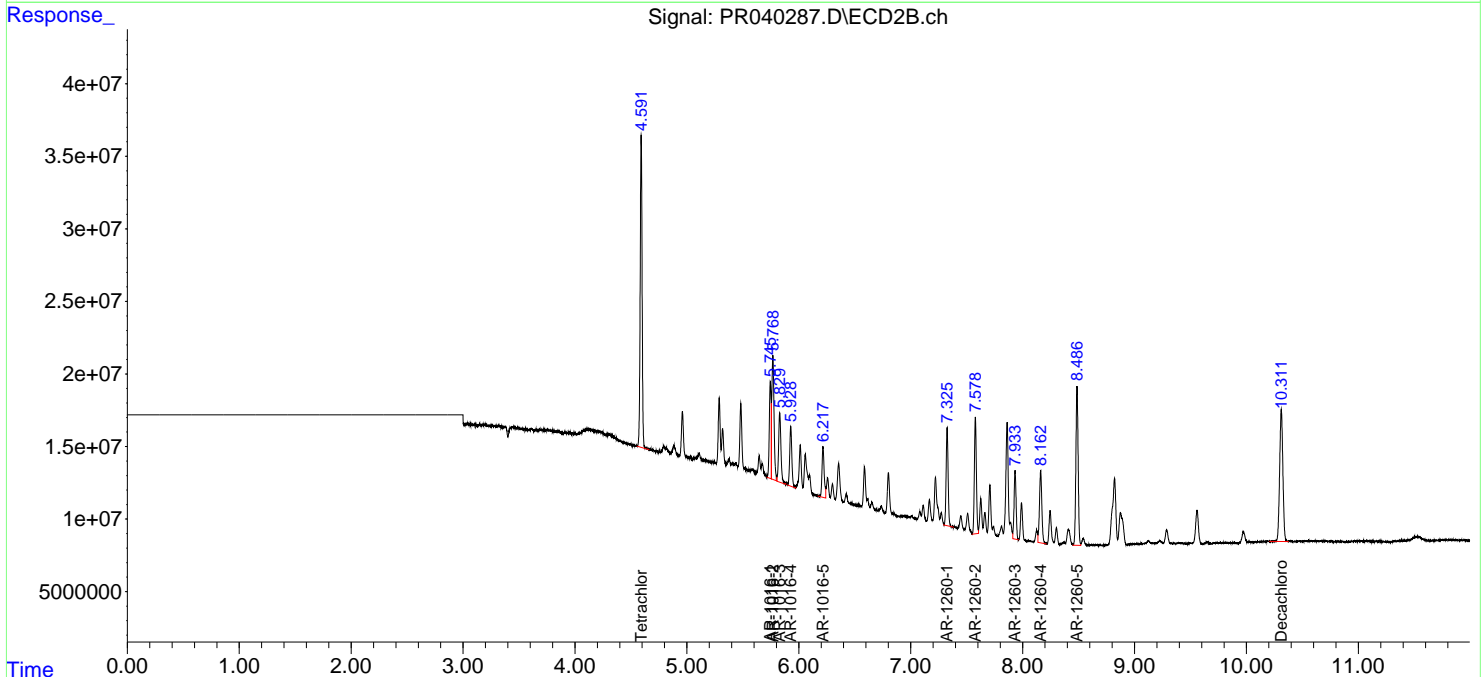
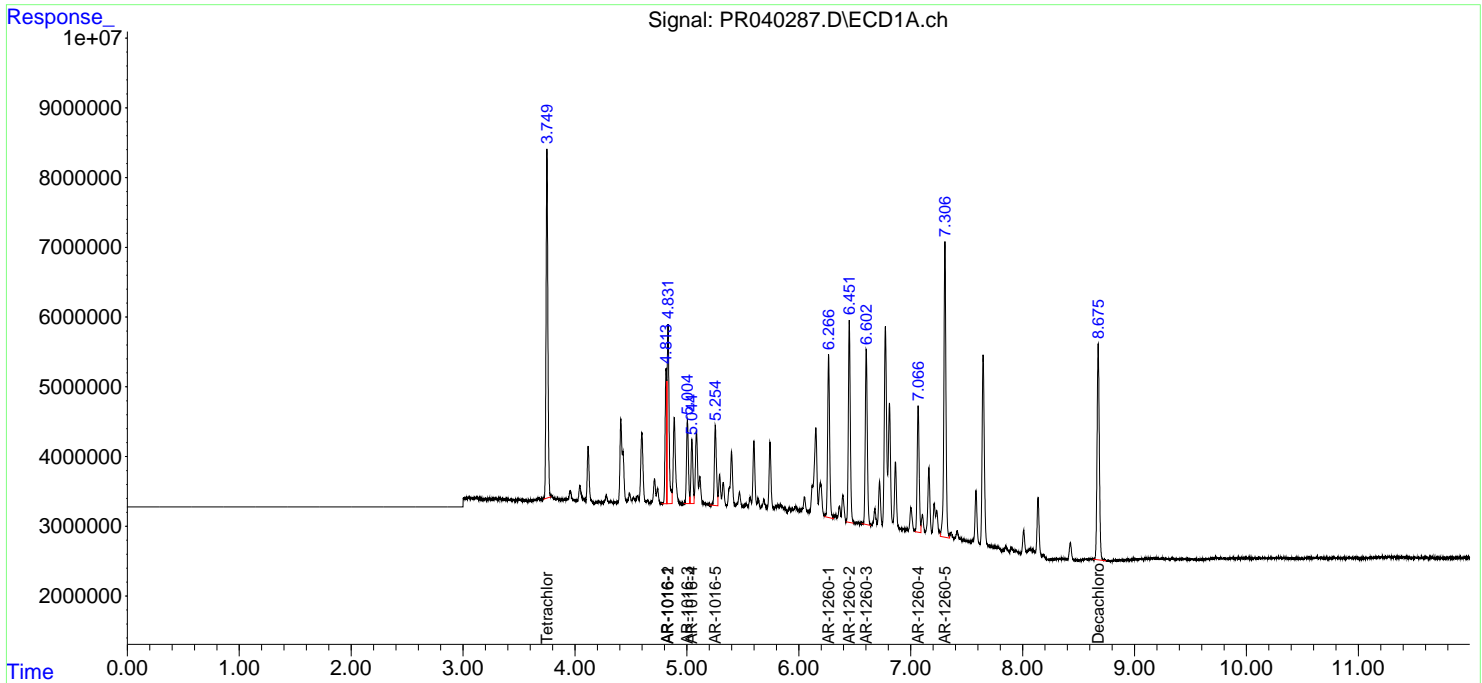
Data Path : Z:\pestpcbsrv\HPCHEM1\ECD_R\Data\PR081219\
 Data File : PR040287.D
 Signal(s) : Signal #1: ECD1A.ch Signal #2: ECD2B.ch
 Acq On : 12 Aug 2019 14:59
 Operator : SM\AJ
 Sample : PB122161BS
 Misc :
 ALS Vial : 15 Sample Multiplier: 1

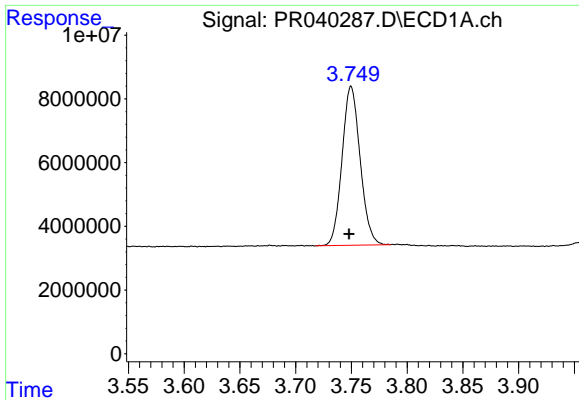
Instrument :
 ECD_R
 Client Sampled :
 PB122161BS

Manual Integrations
APPROVED
 Ankita
 8/14/2019 12:19:20 PM

Integration File signal 1: autoint1.e
 Integration File signal 2: autoint2.e
 Quant Time: Aug 12 16:44:13 2019
 Quant Method : Z:\pestpcbsrv\HPCHEM1\ECD_R\Method\PR081019.M
 Quant Title : GC EXTRACTABLES
 QLast Update : Sat Aug 10 07:38:17 2019
 Response via : Initial Calibration
 Integrator: ChemStation

Volume Inj. : 2 µl
 Signal #1 Phase : ZB-MR1 Signal #2 Phase: ZB-MR2
 Signal #1 Info : 30Mx0.32mmx 0.50µ Signal #2 Info : 30M x 0.32mm x 0.25µm

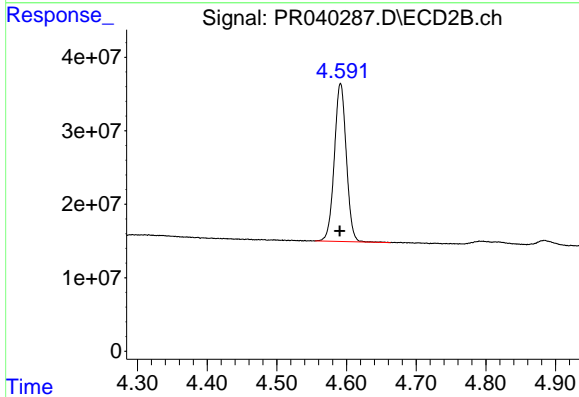




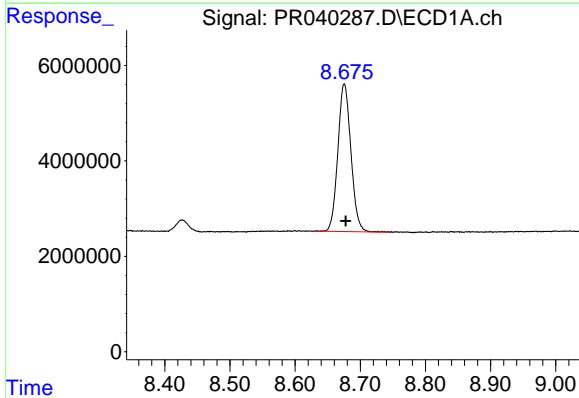
#1 Tetrachloro-m-xylene
 R.T.: 3.750 min
 Delta R.T.: 0.002 min
 Response: 56430843
 Conc: 23.55 ng/ml

Instrument :
 ECD_R
ClientSampled :
 PB122161BS

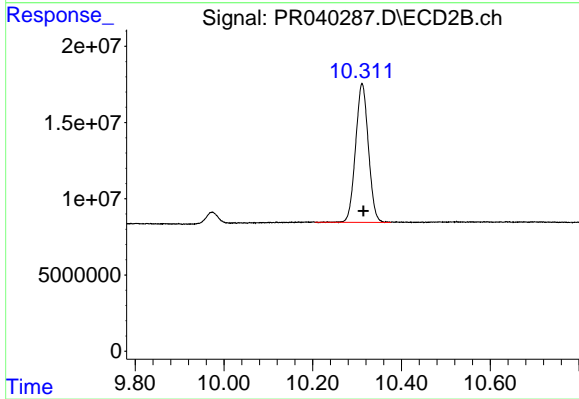
Manual Integrations
APPROVED
 Ankita
 8/14/2019 12:19:20 PM



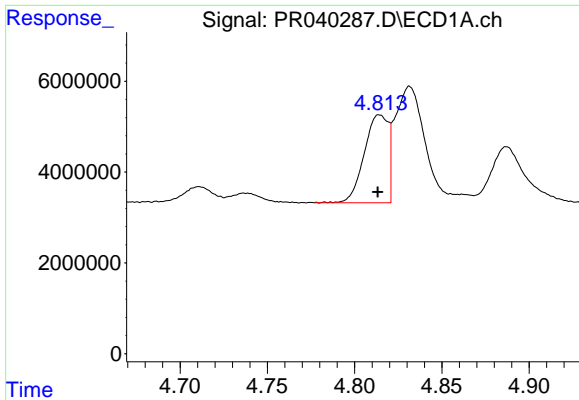
#1 Tetrachloro-m-xylene
 R.T.: 4.591 min
 Delta R.T.: 0.001 min
 Response: 256395237
 Conc: 24.63 ng/ml



#2 Decachlorobiphenyl
 R.T.: 8.676 min
 Delta R.T.: -0.002 min
 Response: 43123170
 Conc: 17.72 ng/ml



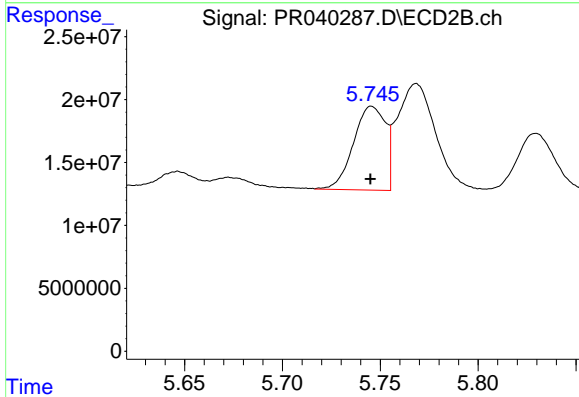
#2 Decachlorobiphenyl
 R.T.: 10.311 min
 Delta R.T.: -0.003 min
 Response: 182027562
 Conc: 20.79 ng/ml



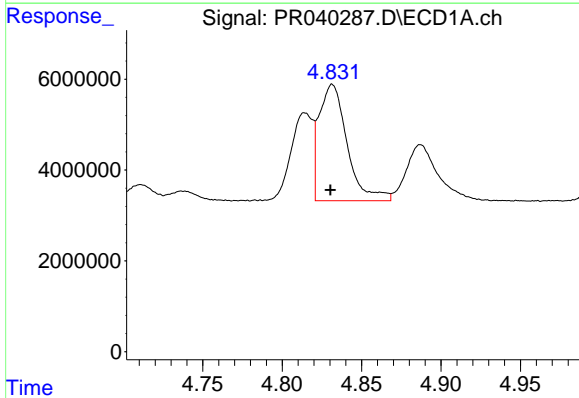
#3 AR-1016-1
 R.T.: 4.814 min
 Delta R.T.: 0.000 min
 Response: 18493670
 Conc: 237.72 ng/ml

Instrument :
 ECD_R
ClientSampled :
 PB122161BS

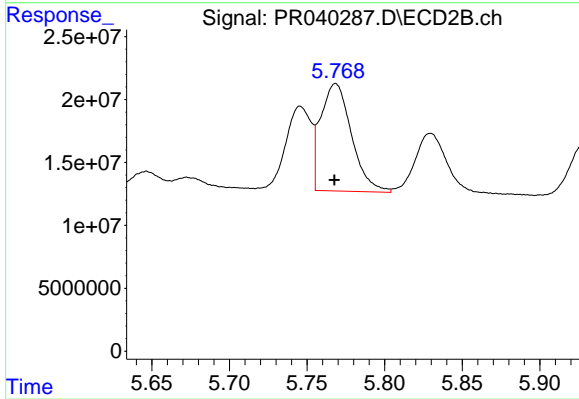
Manual Integrations
APPROVED
 Ankita
 8/14/2019 12:19:20 PM



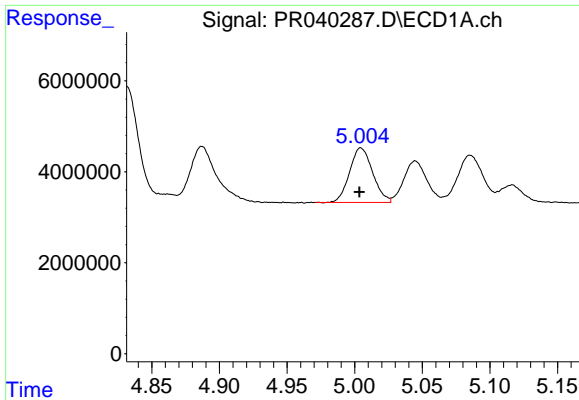
#3 AR-1016-1
 R.T.: 5.745 min
 Delta R.T.: 0.000 min
 Response: 75983411
 Conc: 242.53 ng/ml



#4 AR-1016-2
 R.T.: 4.832 min
 Delta R.T.: 0.001 min
 Response: 31532415
 Conc: 251.65 ng/ml



#4 AR-1016-2
 R.T.: 5.768 min
 Delta R.T.: 0.000 min
 Response: 117963184
 Conc: 251.89 ng/ml

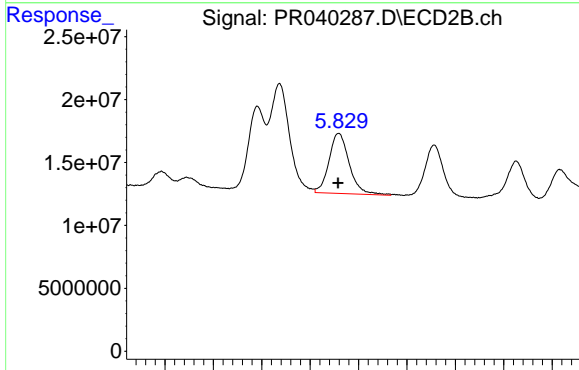


#5 AR-1016-3

R.T.: 5.004 min
 Delta R.T.: 0.001 min
 Response: 14264563
 Conc: 233.82 ng/ml

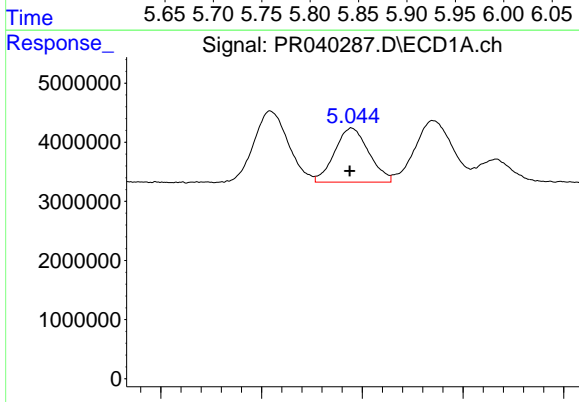
Instrument :
 ECD_R
ClientSampled :
 PB122161BS

Manual Integrations
APPROVED
 Ankita
 8/14/2019 12:19:20 PM



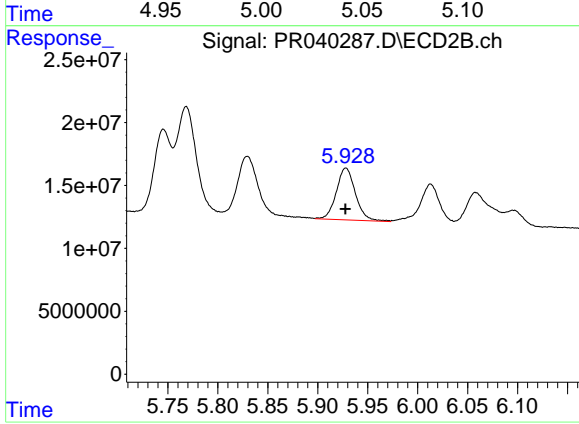
#5 AR-1016-3

R.T.: 5.829 min
 Delta R.T.: 0.000 min
 Response: 69325511
 Conc: 255.33 ng/ml m



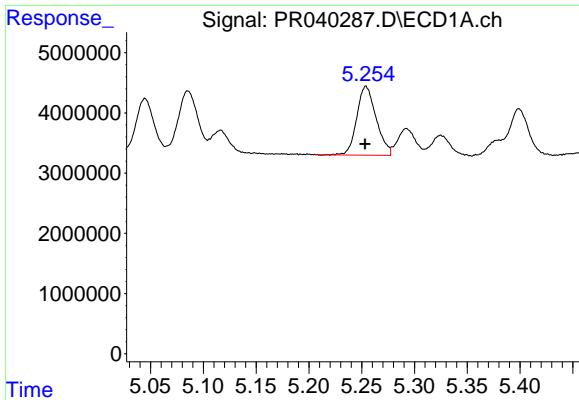
#6 AR-1016-4

R.T.: 5.045 min
 Delta R.T.: 0.001 min
 Response: 10784881
 Conc: 224.77 ng/ml



#6 AR-1016-4

R.T.: 5.928 min
 Delta R.T.: 0.000 min
 Response: 54936739
 Conc: 246.59 ng/ml

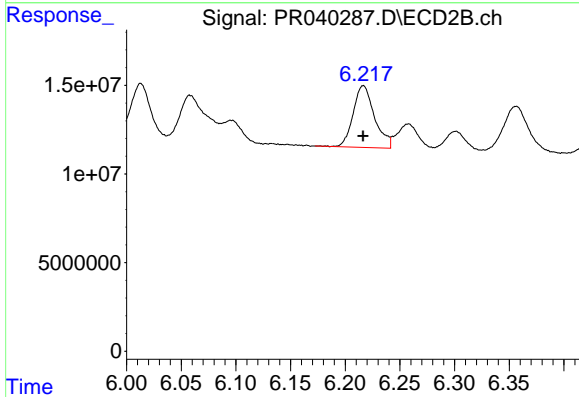


#7 AR-1016-5

R.T.: 5.254 min
 Delta R.T.: 0.000 min
 Response: 14604384
 Conc: 234.73 ng/ml

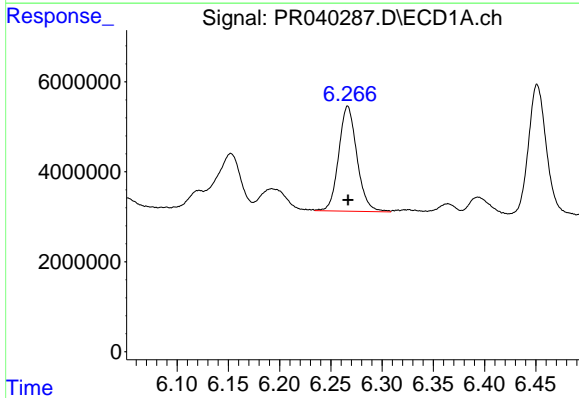
Instrument :
 ECD_R
ClientSampled :
 PB122161BS

Manual Integrations
APPROVED
 Ankita
 8/14/2019 12:19:20 PM



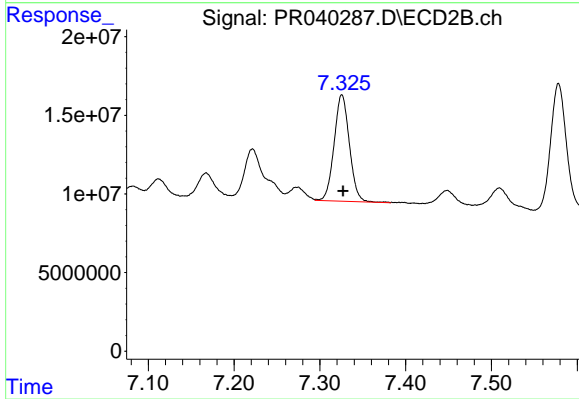
#7 AR-1016-5

R.T.: 6.217 min
 Delta R.T.: 0.000 min
 Response: 47415067
 Conc: 240.08 ng/ml



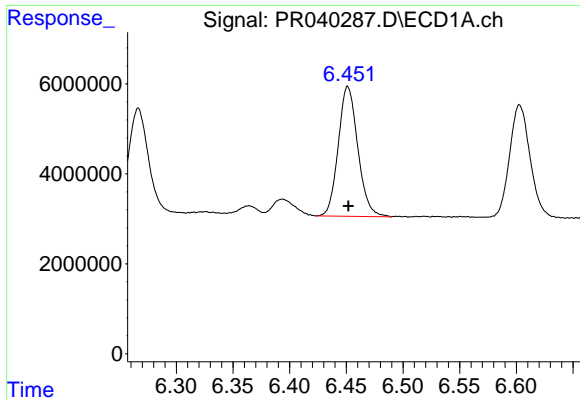
#31 AR-1260-1

R.T.: 6.267 min
 Delta R.T.: 0.000 min
 Response: 28944933
 Conc: 251.60 ng/ml



#31 AR-1260-1

R.T.: 7.326 min
 Delta R.T.: -0.001 min
 Response: 83781517
 Conc: 229.33 ng/ml

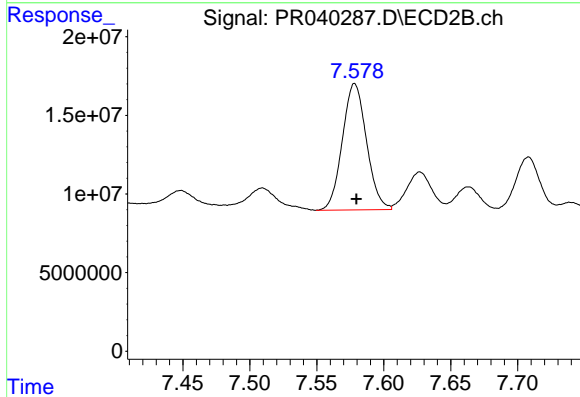


#32 AR-1260-2

R.T.: 6.451 min
 Delta R.T.: 0.000 min
 Response: 34684718
 Conc: 240.87 ng/ml

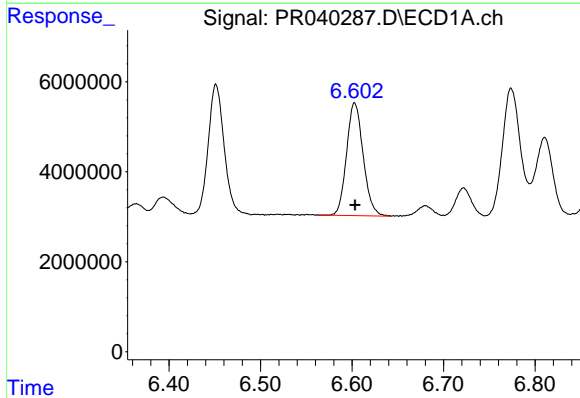
Instrument :
 ECD_R
ClientSampled :
 PB122161BS

Manual Integrations
APPROVED
 Ankita
 8/14/2019 12:19:20 PM



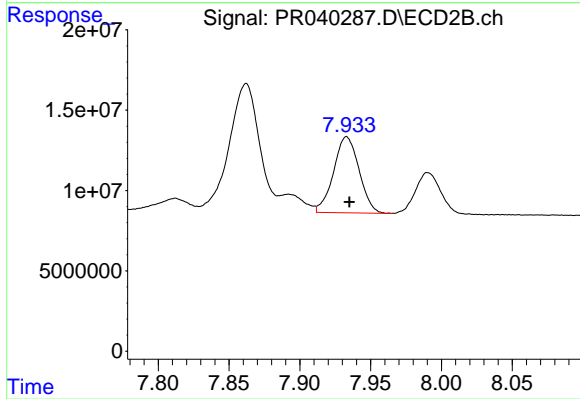
#32 AR-1260-2

R.T.: 7.578 min
 Delta R.T.: -0.001 min
 Response: 100913071
 Conc: 221.81 ng/ml



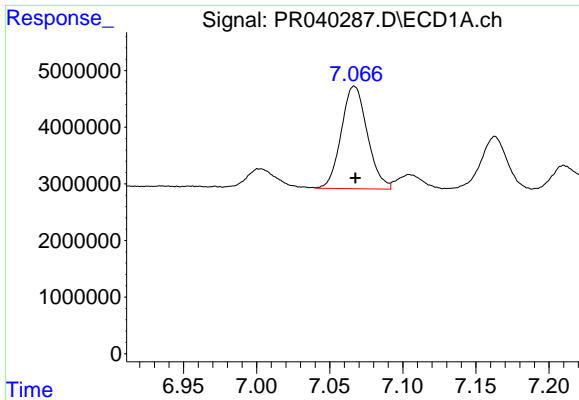
#33 AR-1260-3

R.T.: 6.603 min
 Delta R.T.: 0.000 min
 Response: 31595165
 Conc: 234.00 ng/ml



#33 AR-1260-3

R.T.: 7.933 min
 Delta R.T.: -0.002 min
 Response: 59364828
 Conc: 172.62 ng/ml

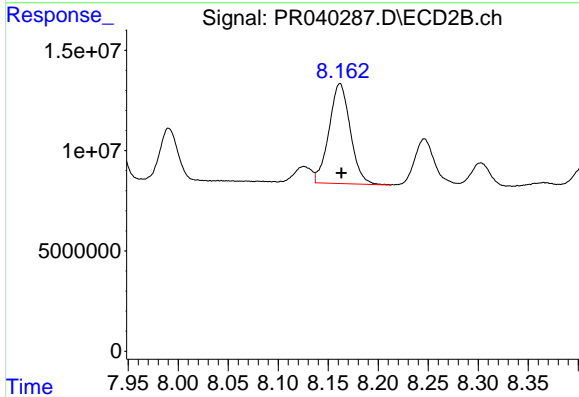


#34 AR-1260-4

R.T.: 7.067 min
 Delta R.T.: 0.000 min
 Response: 22480564
 Conc: 199.11 ng/ml

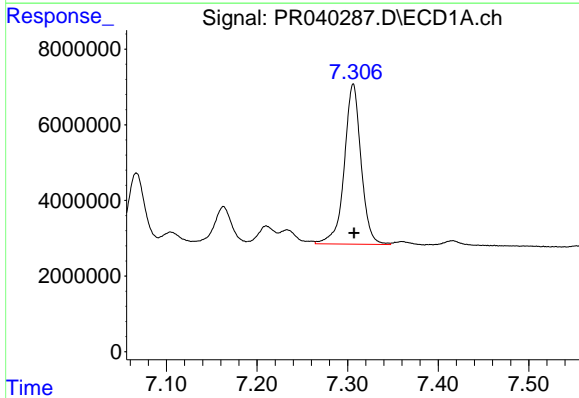
Instrument :
 ECD_R
ClientSampled :
 PB122161BS

Manual Integrations
APPROVED
 Ankita
 8/14/2019 12:19:20 PM



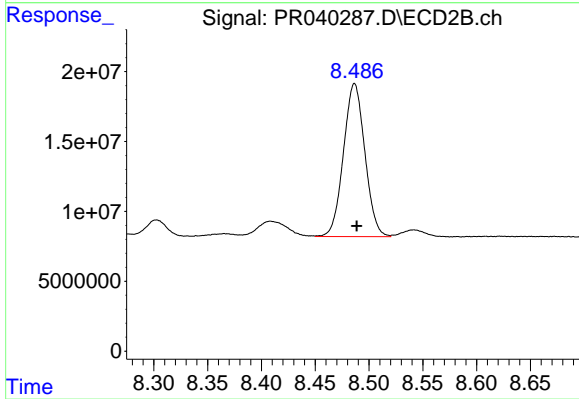
#34 AR-1260-4

R.T.: 8.162 min
 Delta R.T.: -0.002 min
 Response: 73652119
 Conc: 187.33 ng/ml



#35 AR-1260-5

R.T.: 7.306 min
 Delta R.T.: 0.000 min
 Response: 54502660
 Conc: 193.37 ng/ml



#35 AR-1260-5

R.T.: 8.487 min
 Delta R.T.: -0.002 min
 Response: 151819828
 Conc: 177.22 ng/ml